



MINISTRY OF JUSTICE

THE NATIONAL TRADE REGISTER OFFICE

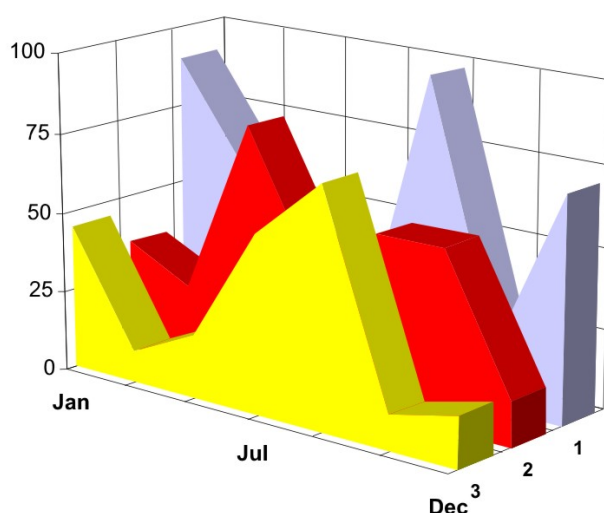
București, Bd. Unirii nr. 74, Bl. J3b, tronson II+III, sector 3; Telefon: +40 21 316.08.04, 316.08.10; Fax: +40 21 316.08.03 Cod poștal: 030837
Website: www.onrc.ro; E-mail: onrc@onrc.ro; Cod de identificare Fiscală: 14942091

PROCEEDINGS IN THE CENTRAL TRADE REGISTER

STATISTICAL SYNTHESIS

OF

RECORDS IN THE CENTRAL TRADE REGISTER
- the 30th of April 2007 - provisional data -



- ISSUE No. 185 -

**MINISTRY OF JUSTICE
THE NATIONAL TRADE REGISTER OFFICE**

- Operations of incorporation of companies, changes in statutory documents and strike-off of companies are based on Law No.26/1990 reissued, Law No.31/1990, reissued, OUG No.76/2001, reissued and Methodology Norms No. P/608/1998.

- This paper presents the trend in operations registered in The Trade Register Office attached to the law court of Bucharest and in the Trade Register Offices attached to the law court in each county of Romania.

- Information recorded in the Central Trade Register concern operations compulsory by law to be registered in the trade registers within the 42 trade register offices attached to the law courts.

• No part of the content of this publication, in original or in any modified format, September be reproduced, stored in a retrieval system, or transmitted, in any form or by any means, without the prior permission in writing of The Ministry of Justice – The National Trade Register Office.

• The content of this publication September be referred to in articles, studies, books, as supporting or explanatory data under the condition only, the source of the information to be clearly and precisely specified.

1	Explanatory Note	1
2.1	Data for December 1990 –April 2007	3
	Table no.1 – Operations registered in the Trade Register, by categories during the period of December 1990 –April 2007, in total by country and counties, rate of categories of operations in total operations country	3
	Table no.1.a – Operations registered in the Trade Register, by categories during the period of December 1990 –April 2007, in total by country and counties, counties’ rate in total country	4
	Table no. 3 – Number and structure of incorporations in the Trade Register, by years, during the period of December 1990-April 2007	5
	Table no.4 – The number of incorporations in the Trade Register, by counties and sources of capital, in the period December 1990 -April 2007	6
	Table no. 5 – The number of incorporations in the Trade Register, by counties and categories, during the period of December 1990 –April 2007	7
	Table no. 6 – The number of incorporations in the Trade Register, by field of activity and categories, during the period of December 1990 -April 2007	8
2.2	Data for April 2007	10
	Table no. 7 – Operations carried on with the Trade Registers, by counties and categories, in April 2007	10
	Table no. 8 – The number of incorporations in the Trade Register, by counties and sources of capital, in April 2007	11
	Table no. 9 – The number of incorporations in the Trade Register, by counties and category in April 2007	12
	Table no. 10 –The number of incorporations in the Trade Register, by field of activity and categories in April 2007	13
	Table no. 11 – Number of companies registered and the amount of subscribed capital, by county in April 2007	15
	Table no. 12– Number of registered companies and the amount of subscribed capital by category, in April 2007	16
	Diagram no. 5 – Average subscribed capital on company in April 2007	16

The Trade Register Office is set-up by Law No. 26/1990, reissued and modified by OUG No. 129/2002, became an active institution since December 1990 and is structured in two levels:

- the national level, represented by the National Trade Register Office organised under the Ministry of Justice
- the local level, represented by the 42 trade register offices attached to the law courts and co-ordinated by the National Trade Register Office

The categories of businessmen compulsory to register in the trade register are:

- natural persons tradesmen and family associations doing usually commercial acts, commercial companies, national companies, companies under state supervision, and co-operative organisations
- subsidiaries registered as commercial companies and legal persons following the legal proceedings of set-up, activity and incorporation according to the type of the legally set-up company.

Usual Terms:

- incorporation – represents the registration of the company in the trade registry awarding the quality of legal person.

- other statutory documents – represent the official registration of the changes occurred in a company's life, such as: changes in headquarters' address, increase or decrease of the issued capital, merger, liquidation, strike-off, etc.

- strike-off – represents the removal of a company from the trade registry, due to dissolution and liquidation, being also the very moment the company loses its quality of legal person. Data also include the companies under the provisions of Law No. 314/2001.

- change of certificate – represents the obligation of companies set-up before OGU No. 76/2001 republished came in force, to request the incorporation certificate and fiscal registration certificate to be replaced with the new registration certificate containing the given unique registration code.

The ratio of these changes is being calculated as a proportion between the effective number of changes and the number of active companies due to operate the change.

- active company from the legal point of view – a company registered in the trade register and which is not affected by any of the situations leading to the temporary or permanently loss of this status (e.g. dissolution, liquidation, strike-off)

- operations represent all the records in the trade registry including incorporations, other statutory documents and strike-off of companies, irrespective of the object of activity, company's type and origin of the subscribed capital (local or foreign investment).

• **Terms used in tables and charts**

➤ **Number of companies:** represents, depending on the specific table, the number of companies incorporated in the related period, the number of companies being struck-off from the trade registry.

➤ **Amount of the subscribed capital:**

- **total, in local currency:** the amount of the subscribed capital resulted from totalising the amount subscribed (in cash and in kind) in local currency (ROL)

➤ **Regional development:**

<i>North-East:</i>	Suceava, Botoșani, Neamț, Iași, Bacău, Vaslui.
<i>South-East:</i>	Vrancea, Galați, Buzău, Brăila, Tulcea, Constanța.
<i>South-Muntenia:</i>	Argeș, Dâmbovița, Prahova, Teleorman, Giurgiu, Călărași, Ialomița.
<i>South-West Oltenia:</i>	Gorj, Vâlcea, Dolj, Mehedinți, Olt.
<i>West:</i>	Arad, Caraș-Severin, Hunedoara, Timiș.
<i>North-West:</i>	Bihor, Bistrița, Cluj, Satu Mare, Sălaj, Maramureș.
<i>Center:</i>	Alba, Brașov, Covasna, Harghita, Mureș, Sibiu.
<i>Bucharest-Ilfov:</i>	București, Ilfov.

CAEN code – The Classification of Activities in the National Economy was approved by HG No. 656/1997, modified by Order No 601 of the President of National Institute of Statistics being compatible with the international classification used in statistic reports and official documents. Activities are ranked upon homogeneity principle by sections, divisions, groups and classes.

Common abbreviations

- **PF** - Natural Persons Tradesman
- **AF** - Family association
- **SNC** - General Partnership
- **SCS** - Limited Partnership
- **SA** - Joint stock company
- **SRL** - Limited liability company
- **RA** - Company Under State Supervision
- **OC** - Co-operative organisation

Source:

The integrated IT system of the trade registry is designed by The National Trade Registry Office according to the provisions of the related legislation in force. The source of information is the computerised system of the trade registers handled by the Trade Register Offices attached to the law courts.

Table no. 1

**Operations registered in the Trade Register, by categories
during the period of December 1990 - April 2007 in total by country and counties,
- rate of categories of operations in total operations/country -**

Counties	Total of registered operations		out of which :							
			Registered companies		Changes in statutory documents		out of which : of liquidation, dissolution		Strike off companies	
	No.	%	No.	%	No.	%	No.	%	No.	%
0	1	2	3	4	5	6	7	8	11	12
Total ROMÂNIA	8127785	100,0	1605851	100,0	6033771	100,0	9911	100,0	488163	100,0
ALBA	110520	1,4	25084	1,6	80896	1,3	371	3,7	4540	0,9
ARAD	180892	2,2	39538	2,5	131537	2,2	369	3,7	9817	2,0
ARGES	197655	2,4	41400	2,6	147585	2,4	197	2,0	8670	1,8
BACAU	187618	2,3	40393	2,5	135676	2,2	1003	10,1	11549	2,4
BIHOR	247672	3,0	48355	3,0	185372	3,1	303	3,1	13945	2,9
BISTRITA-NASAUD	99818	1,2	19540	1,2	74339	1,2	72	0,7	5939	1,2
BOTOSANI	76022	0,9	19809	1,2	51051	0,8	66	0,7	5162	1,1
BRASOV	271346	3,3	49943	3,1	210736	3,5	149	1,5	10667	2,2
BRAILA	101894	1,3	22188	1,4	76353	1,3	61	0,6	3353	0,7
BUZAU	151271	1,9	29527	1,8	111628	1,9	146	1,5	10116	2,1
CARAS-SEVERIN	103660	1,3	19865	1,2	75796	1,3	41	0,4	7999	1,6
CALARASI	70680	0,9	16176	1,0	49701	0,8	79	0,8	4803	1,0
CLUJ	364537	4,5	73659	4,6	278424	4,6	197	2,0	12454	2,6
CONSTANTA	348995	4,3	67307	4,2	257083	4,3	926	9,3	24605	5,0
COVASNA	72651	0,9	13748	0,9	54709	0,9	18	0,2	4194	0,9
DAMBOVITA	124864	1,5	30046	1,9	81731	1,4	98	1,0	13087	2,7
DOLJ	209061	2,6	42570	2,7	154286	2,6	215	2,2	12205	2,5
GALATI	226121	2,8	38025	2,4	174458	2,9	125	1,3	13638	2,8
GIURGIU	55656	0,7	13007	0,8	37749	0,6	47	0,5	4900	1,0
GORJ	108124	1,3	19238	1,2	82956	1,4	48	0,5	5930	1,2
HARGHITA	118764	1,5	24409	1,5	90280	1,5	51	0,5	4075	0,8
HUNEDOARA	160616	2,0	33094	2,1	114437	1,9	126	1,3	13085	2,7
IALOMITA	76989	0,9	15047	0,9	56550	0,9	78	0,8	5392	1,1
IASI	277170	3,4	49602	3,1	216590	3,6	597	6,0	10978	2,2
MARAMURES	170109	2,1	41317	2,6	118534	2,0	159	1,6	10258	2,1
MEHEDINTI	83838	1,0	18176	1,1	57899	1,0	55	0,6	7763	1,6
MURES	202998	2,5	40480	2,5	149868	2,5	83	0,8	12650	2,6
NEAMT	171082	2,1	35531	2,2	122016	2,0	304	3,1	13535	2,8
OLT	104213	1,3	22790	1,4	72686	1,2	21	0,2	8737	1,8
PRAHOVA	279869	3,4	52982	3,3	212534	3,5	274	2,8	14353	2,9
SALAJ	69289	0,9	15509	1,0	49288	0,8	29	0,3	4492	0,9
SATU MARE	129948	1,6	27044	1,7	93455	1,5	26	0,3	9449	1,9
SIBIU	175820	2,2	31027	1,9	137643	2,3	31	0,3	7150	1,5
SUCEAVA	192948	2,4	41012	2,6	136421	2,3	29	0,3	15515	3,2
TELEORMAN	88211	1,1	18174	1,1	65794	1,1	49	0,5	4243	0,9
TIMIS	306682	3,8	56052	3,5	234994	3,9	271	2,7	15636	3,2
TULCEA	81483	1,0	16617	1,0	59896	1,0	149	1,5	4970	1,0
VASLUI	93310	1,1	20597	1,3	64480	1,1	197	2,0	8233	1,7
VALCEA	126686	1,6	26631	1,7	92085	1,5	138	1,4	7970	1,6
VRANCEA	103038	1,3	19914	1,2	79139	1,3	51	0,5	3985	0,8
MUN. BUCURESTI	1698764	20,9	304813	19,0	1282019	21,2	2641	26,6	111932	22,9
ILFOV	106901	1,3	25615	1,6	75097	1,2	21	0,2	6189	1,3

*) according to the effect of Law No. 314/2001, art.1 și art. 6

*** Less than 0,01%

Table no. 2

**Operations registered in the Trade Register, by categories
during the period of December 1990 - April 2007, in total by country and counties,
- rate of categories of operations in total operations/country -**

Counties	Total of registered operations		out of which :							
			Registered companies		Changes in statutory documents		out of which : of liquidation, dissolution		Strike off companies	
	No.	%	No.	%	No.	%	No.	%	No.	%
0	1	2	3	4	5	6	7	8	11	12
Total ROMÂNIA	8127785	100,0	1605851	19,8	6033771	74,2	9911	0,1	488163	6,0
ALBA	110520	100,0	25084	22,7	80896	73,2	371	0,3	4540	4,1
ARAD	180892	100,0	39538	21,9	131537	72,7	369	0,2	9817	5,4
ARGES	197655	100,0	41400	20,9	147585	74,7	197	0,1	8670	4,4
BACAU	187618	100,0	40393	21,5	135676	72,3	1003	0,5	11549	6,2
BIHOR	247672	100,0	48355	19,5	185372	74,8	303	0,1	13945	5,6
BISTRITA-NASAUD	99818	100,0	19540	19,6	74339	74,5	72	0,1	5939	5,9
BOTOSANI	76022	100,0	19809	26,1	51051	67,2	66	0,1	5162	6,8
BRASOV	271346	100,0	49943	18,4	210736	77,7	149	0,1	10667	3,9
BRAILA	101894	100,0	22188	21,8	76353	74,9	61	0,1	3353	3,3
BUZAU	151271	100,0	29527	19,5	111628	73,8	146	0,1	10116	6,7
CARAS-SEVERIN	103660	100,0	19865	19,2	75796	73,1	41	0,0	7999	7,7
CALARASI	70680	100,0	16176	22,9	49701	70,3	79	0,1	4803	6,8
CLUJ	364537	100,0	73659	20,2	278424	76,4	197	0,1	12454	3,4
CONSTANTA	348995	100,0	67307	19,3	257083	73,7	926	0,3	24605	7,1
COVASNA	72651	100,0	13748	18,9	54709	75,3	18	0,0	4194	5,8
DAMBOVITA	124864	100,0	30046	24,1	81731	65,5	98	0,1	13087	10,5
DOLJ	209061	100,0	42570	20,4	154286	73,8	215	0,1	12205	5,8
GALATI	226121	100,0	38025	16,8	174458	77,2	125	0,1	13638	6,0
GIURGIU	55656	100,0	13007	23,4	37749	67,8	47	0,1	4900	8,8
GORJ	108124	100,0	19238	17,8	82956	76,7	48	0,0	5930	5,5
HARGHITA	118764	100,0	24409	20,6	90280	76,0	51	0,0	4075	3,4
HUNEDOARA	160616	100,0	33094	20,6	114437	71,2	126	0,1	13085	8,1
IALOMITA	76989	100,0	15047	19,5	56550	73,5	78	0,1	5392	7,0
IASI	277170	100,0	49602	17,9	216590	78,1	597	0,2	10978	4,0
MARAMURES	170109	100,0	41317	24,3	118534	69,7	159	0,1	10258	6,0
MEHEDINTI	83838	100,0	18176	21,7	57899	69,1	55	0,1	7763	9,3
MURES	202998	100,0	40480	19,9	149868	73,8	83	0,0	12650	6,2
NEAMT	171082	100,0	35531	20,8	122016	71,3	304	0,2	13535	7,9
OLT	104213	100,0	22790	21,9	72686	69,7	21	0,0	8737	8,4
PRAHOVA	279869	100,0	52982	18,9	212534	75,9	274	0,1	14353	5,1
SALAJ	69289	100,0	15509	22,4	49288	71,1	29	0,0	4492	6,5
SATU MARE	129948	100,0	27044	20,8	93455	71,9	26	0,0	9449	7,3
SIBIU	175820	100,0	31027	17,6	137643	78,3	31	0,0	7150	4,1
SUCEAVA	192948	100,0	41012	21,3	136421	70,7	29	0,0	15515	8,0
TELEORMAN	88211	100,0	18174	20,6	65794	74,6	49	0,1	4243	4,8
TIMIS	306682	100,0	56052	18,3	234994	76,6	271	0,1	15636	5,1
TULCEA	81483	100,0	16617	20,4	59896	73,5	149	0,2	4970	6,1
VASLUI	93310	100,0	20597	22,1	64480	69,1	197	0,2	8233	8,8
VALCEA	126686	100,0	26631	21,0	92085	72,7	138	0,1	7970	6,3
VRANCEA	103038	100,0	19914	19,3	79139	76,8	51	0,0	3985	3,9
MUN. BUCURESTI	1698764	100,0	304813	17,9	1282019	75,5	2641	0,2	111932	6,6
ILFOV	106901	100,0	25615	24,0	75097	70,2	21	0,0	6189	5,8

*) according to the effect of Law No. 314/2001, art.1 și art. 6

*** Less than 0,01%

Table no.3

**Number and structure of incorporations in the Trade Register, by years,
April 2007**

Period (year, month)	Registered companies	Percentage	
	No.	%	%
0	1	2	3
Total, 30 April 2006, out of which	1605851	100,00	
Year 1990	81	0,01	
Year 1991	95840	5,97	
Year 1992	137456	8,56	
Year 1993	117078	7,29	
Year 1994	137445	8,56	
Year 1995	65479	4,08	
Year 1996	62089	3,87	
Year 1997	55663	3,47	
Year 1998	63878	3,98	
Year 1999	57197	3,56	
Year 2000	57291	3,57	
Year 2001	61265	3,82	
Year 2002	84780	5,28	
Year 2003	123582	7,70	
Year 2004	144284	8,98	
Year 2005	157375	9,80	
Year 2006	135211	8,42	
Year 2007 (I - XII) out of which :	49857		100,0
January	10979		22,0
February	13249		26,6
March	14721		29,5
April	10908		21,9

Note: Column 2 reveals the annual structure of incorporations; column 3 reveals the structure by months during the current year.

*** Less than 0,01%
Diagram no.1

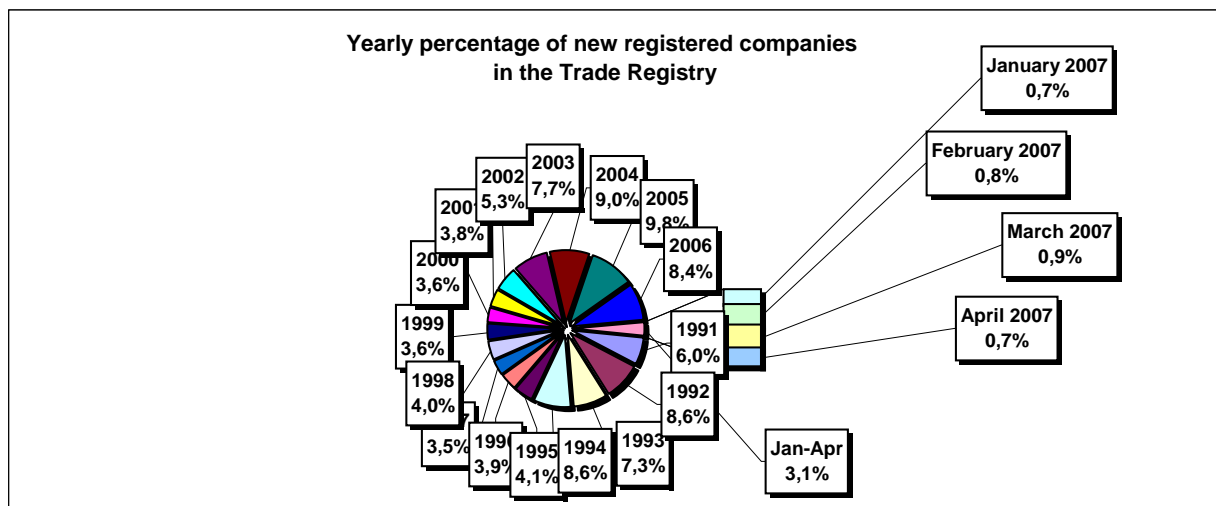


Table no. 4

The number of incorporations in the Trade Register, by counties and sources of capital, in the period December 1990 - April 2007

Counties	Total		out of which:					Ranking by: *	
			Private capital			State majority capital			Mixed capital (state+private)
			out of which:			out of which:			
			PF+AF	Companies	OC	RA	Companies		Companies
No.	%	No.	No.	No.	No.	No.	No.		
0	1	2	3	4	5	6	7	8	9
Total ROMÂNIA	1605851	100,0	412375	1175791	5396	1340	2363	8586	X
ALBA	25084	1,6	8655	16033	141	38	47	170	25
ARAD	39539	2,5	15058	23924	157	26	40	334	15
ARGES	41400	2,6	13357	27665	168	29	29	152	10
BACAU	40393	2,5	13393	26542	158	35	42	223	14
BIHOR	48355	3,0	11087	36715	146	37	62	308	8
BISTRITA-NASAUD	19540	1,2	6934	12351	98	19	29	109	33
BOTOSANI	19809	1,2	9054	10321	122	21	172	119	32
BRASOV	49943	3,1	10310	39218	114	44	87	170	6
BRAILA	22188	1,4	5551	16304	96	28	43	166	28
BUZAU	29527	1,8	8614	20572	142	26	42	131	21
CARAS-SEVERIN	19865	1,2	6859	12667	102	35	65	137	31
CALARASI	16176	1,0	4759	11141	86	18	77	95	38
CLUJ	73659	4,6	18550	54605	150	52	40	262	2
CONSTANTA	67307	4,2	12860	53603	203	51	49	541	3
COVASNA	13748	0,9	4670	8845	68	24	32	109	41
DAMBOVITA	30046	1,9	13705	15950	134	29	75	153	20
DOLJ	42570	2,7	8599	33509	162	40	57	203	9
GALATI	38025	2,4	7527	30139	135	30	51	143	16
GIURGIU	13007	0,8	3107	9579	80	22	109	110	42
GORJ	19238	1,2	4545	14276	184	50	83	100	34
HARGHITA	24409	1,5	9662	14366	86	23	43	229	26
HUNEDOARA	33094	2,1	8717	23884	81	38	92	282	18
IALOMITA	15047	0,9	5762	9059	74	15	46	91	40
IASI	49602	3,1	13591	35399	164	34	70	344	7
MARAMURES	41317	2,6	16678	24317	123	37	39	123	11
MEHEDINTI	18176	1,1	5777	12173	82	19	27	98	35
MURES	40480	2,5	14933	25160	156	30	34	167	13
NEAMT	35531	2,2	13122	22024	161	29	30	165	17
OLT	22790	1,4	8987	13429	161	26	64	123	27
PRAHOVA	52982	3,3	16241	36173	177	50	70	271	5
SALAJ	15509	1,0	6021	9271	107	19	28	63	39
SATU MARE	27044	1,7	8820	17941	88	19	42	134	22
SIBIU	31027	1,9	7508	23101	119	33	108	158	19
SUCEAVA	41012	2,6	19568	20928	202	30	64	220	12
TELEORMAN	18174	1,1	6286	11489	152	21	44	182	36
TIMIS	56052	3,5	8914	46544	140	38	68	348	4
TULCEA	16617	1,0	5719	10560	66	18	42	212	37
VASLUI	20597	1,3	9964	10332	109	16	41	135	29
VALCEA	26631	1,7	10493	15780	168	40	37	113	23
VRANCEA	19914	1,2	6062	13591	104	16	27	114	30
MUN. BUCURESTI	304812	19,0	19053	284288	138	115	103	1115	1
ILFOV	25615	1,6	3303	22023	92	20	13	164	24

*) The total number of incorporations (col 1)

*** Less than 0,01%

Table no. 5

**The number of incorporations in the Trade Register,
by counties and categories, during the period of
December 1990 - April 2007**

County	Total		out of which:						RA	OC
			PF+AF	companies: 1186740						
	SNC	SCS		SRL	SA	No.	No.			
	No.	%	No.	No.	No.			No.	No.	No.
0	1	2	3	4	5	6	7	8	9	
Total ROMÂNIA	1605851	100,0	412375	32653	1565	1120524	31992	1340	5396	
ALBA	25084	1,6	8655	890	11	14798	551	38	141	
ARAD	39538	2,5	15058	53	11	23561	671	26	157	
ARGES	41400	2,6	13357	107	14	26912	813	29	168	
BACAU	40393	2,5	13393	1299	4	24780	723	35	158	
BIHOR	48355	3,0	11087	126	47	36026	886	37	146	
BISTRITA-NASAUD	19540	1,2	6934	146	21	11911	411	19	98	
BOTOSANI	19809	1,2	9054	468	1	9693	450	21	122	
BRASOV	49943	3,1	10310	239	20	38373	843	44	114	
BRAILA	22188	1,4	5551	376	12	15609	516	28	96	
BUZAU	29527	1,8	8614	3747	46	16389	563	26	142	
CARAS-SEVERIN	19865	1,2	6859	117	8	12282	462	35	102	
CALARASI	16176	1,0	4759	609	3	10353	348	18	86	
CLUJ	73659	4,6	18550	2112	18	51526	1251	52	150	
CONSTANTA	67307	4,2	12860	311	23	52399	1460	51	203	
COVASNA	13748	0,9	4670	148	4	8538	296	24	68	
DAMBOVITA	30046	1,9	13705	60	8	15624	486	29	134	
DOLJ	42570	2,7	8599	1560	8	31336	865	40	162	
GALATI	38025	2,4	7527	1574	6	27922	831	30	135	
GIURGIU	13007	0,8	3107	35	8	9433	322	22	80	
GORJ	19238	1,2	4545	29	1	13943	486	50	184	
HARGHITA	24409	1,5	9662	62	6	14086	484	23	86	
HUNEDOARA	33094	2,1	8717	1166	98	22330	664	38	81	
IALOMITA	15047	0,9	5762	266	11	8575	344	15	74	
IASI	49602	3,1	13591	506	111	34200	994	34	164	
MARAMURES	41317	2,6	16678	1927	23	21944	584	37	123	
MEHEDINTI	18176	1,1	5777	427	3	11543	325	19	82	
MURES	40480	2,5	14933	37	34	24636	654	30	156	
NEAMT	35531	2,2	13122	3293	30	18233	663	29	161	
OLT	22790	1,4	8987	1611	1	11520	484	26	161	
PRAHOVA	52982	3,3	16241	3122	14	32496	882	50	177	
SALAJ	15509	1,0	6021	600	4	8470	288	19	107	
SATU MARE	27044	1,7	8820	283	6	17362	466	19	88	
SIBIU	31027	1,9	7508	776	48	21899	644	33	119	
SUCEAVA	41012	2,6	19568	438	8	20187	579	30	202	
TELEORMAN	18174	1,1	6286	272	399	10633	411	21	152	
TIMIS	56052	3,5	8914	608	27	45091	1234	38	140	
TULCEA	16617	1,0	5719	1363	114	8865	472	18	66	
VASLUI	20597	1,3	9964	90	12	10005	401	16	109	
VALCEA	26631	1,7	10493	364	6	15078	482	40	168	
VRANCEA	19914	1,2	6062	356	10	12922	444	16	104	
MUN. BUCURESTI	304813	19,0	19053	1031	296	277505	6674	115	138	
ILFOV	25615	1,6	3303	49	30	21536	585	20	92	

Table no. 6

**The number of incorporations in the Trade Register, by field of activity*
during the period of December 1990 - April 2007**

CAEN segment	Field of activity	Total		out of which:						
				PF+AF	companies: 1186740				RA	OC
		No.	%		No.	SNC	SCS	SRL		
				No.		No.	No.	No.	No.	No.
0	1	2	3	4	5	6	7	8	9	10
	Total ROMANIA	1605851	100,0	412375	32653	1565	1120524	31992	1340	5396
1	Agriculture, hunting and related service activities	64651	4,0	16332	2024	44	42294	3787	53	117
2	Forestry, logging and related service activities	8565	0,5	1120	152	3	6969	222	91	8
5	Fishing, fish farming and related service activities	3176	0,2	1818	17	3	1284	54		
10	Mining of coal and lignite; extraction of peat	117	0,0	2			79	32	4	
11	Extraction of crude petroleum and natural gas; service activities incidental to oil and gas extraction, excluding surveying	350	0,0	16	1		163	124	46	
12	Mining of uranium and thorium ores	133	0,0	32			95	6		
13	Mining of metal ores	535	0,0	163			309	55	8	
14	Other mining and quarrying	1674	0,1	109	9	1	1382	170	2	1
15	Manufacture of food products and beverages	73823	4,6	14656	3260	149	53647	1858	5	248
16	Manufacture of tobacco products	291	0,0	47			212	31	1	
17	Manufacture of textiles	11825	0,7	2409	556	16	8293	406		145
18	Manufacture of wearing apparel; dressing and dyeing of fur	21151	1,3	4829	875	38	14745	358	1	305
19	Tanning and dressing of leather; manufacture of luggage, handbags, saddlery, harness and footwear	5365	0,3	916	112	6	4156	123	1	51
20	Manufacture of wood and of products of wood and cork, except furniture; manufacture of articles of straw and plaiting materials	25433	1,6	9063	575	29	15217	498	9	42
21	Manufacture of pulp, paper and paper products	1824	0,1	125	21	1	1566	98		13
22	Publishing, printing and reproduction of recorded media	12048	0,8	970	317	21	10311	405	14	10
23	Manufacture of coke, refined petroleum products and nuclear fuel	261	0,0	24			201	34	2	
24	Manufacture of chemicals and chemical products	3742	0,2	120	89	1	3143	377	6	6
25	Manufacture of rubber and plastic products	6348	0,4	577	314	7	5165	260		24
26	Manufacture of other non-metallic mineral products	9418	0,6	2882	212	6	5913	386	5	14
27	Manufacture of basic metals	2454	0,2	172	39	3	2023	207	3	7
28	Manufacture of fabricated metal products, except machinery and equipment	17622	1,1	4351	361	23	12090	724	11	62
29	Manufacture of machinery and equipment n.e.c.	3855	0,2	108	44	7	3251	421	19	5
30	Manufacture of office machinery and computers	1783	0,1	16	25	4	1658	80		
31	Manufacture of electrical machinery and apparatus n.e.c.	1969	0,1	112	44	6	1657	144		6
32	Manufacture of radio, television and communication equipment and apparatus	879	0,1	63	14	4	724	73		1
33	Manufacture of medical, precision and optical instruments, watches and clocks	2676	0,2	640	17	2	1909	104		4
34	Manufacture of motor vehicles, trailers and semi-trailers	928	0,1	31	31	3	735	126		2
35	Manufacture of other transport equipment	1948	0,1	286	86	7	1370	124	73	2
36	Manufacture of furniture; manufacturing n.e.c.	15894	1,0	4521	284	16	10574	336	5	158
37	Recycling	5011	0,3	436	51	5	4345	173		1
40	Electricity, gas, steam and hot water supply	3010	0,2	839	3	1	1549	530	88	
41	Collection, purification and distribution of water	3564	0,2	1628	2		1656	205	73	
45	Construction	101134	6,3	26373	611	43	71530	2447	53	77

Table no. 6
(continuing)

**The number of incorporations in the Trade Register, by field of activity*
and categories, during the period of December 1990 - April 2007**

CAEN segment	Field of activity	Total		out of which:						RA	OC
				PF+AF	companies: 1186740						
					SNC	SCS	SRL	SA			
0	1	No.	%	No.	No.	No.	No.	No.	No.		
		2	3	4	5	6	7	8	9	10	
	Total ROMÂNIA	1605851	100,0	412375	32653	1565	1120524	31992	1340	5396	
50	Sale, maintenance and repair of motor vehicles and motorcycles; retail sale of automotive fuel	55435	3,5	8821	1244		44263	1025	6	42	
51	Wholesale trade and commission trade, except of motor vehicles and motorcycles	206892	12,9	18600	4524	151	179997	3303	35	282	
52	Retail trade, except of motor vehicles and motorcycles; repair of personal and household goods	507291	31,6	180081	11915	557	309852	2495	6	2384	
55	Hotels and restaurants	61848	3,9	14622	1635	126	44509	788	73	95	
60	Land transport; transport via pipelines	83778	5,2	36428	845	37	45368	1057	33	10	
61	Water transport	873	0,1	165	82	8	483	64	70	1	
62	Air transport	303	0,0	18			227	48	10		
63	Supporting and auxiliary transport activities; activities of travel agencies	10709	0,7	722	220	14	9206	440	96	11	
64	Post and telecommunications	7587	0,5	757	11	1	6499	305	11	3	
65	Financial intermediation, except insurance and pension funding	6556	0,4	147	15		2979	2380	2	1033	
66	Insurance and pension funding, except compulsory social security	2055	0,1	613	1		515	925		1	
67	Activities auxiliary to financial intermediation	7105	0,4	1278	7	2	5523	287		8	
70	Real estate activities	25129	1,6	762	28	9	23650	656	17	7	
71	Renting of machinery and equipment without operator and of personal and household goods	3640	0,2	692	116	8	2658	95	70	1	
72	Computer and related activities	24713	1,5	5197	120	13	18994	384	2	3	
73	Research and development	1763	0,1	250	11	2	1282	173	43	2	
74	Other business activities	115588	7,2	23994	793	74	88884	1676	106	60	
75	Public administration and defence; compulsory social security	363	0,0	91	5		219	26	21	1	
80	Education	7122	0,4	3545	62	6	3444	65			
85	Health and social work	16631	1,0	2145	233	15	14150	84	3	1	
90	Sewage and refuse disposal, sanitation and similar activities	980	0,1	102	13	2	733	110	18		
91	Activities of membership organizations n.e.c.	214	0,0	94	1		101	15		3	
92	Recreational, cultural and sporting activities	17416	1,1	4779	202	14	12038	302	69	12	
93	Other service activities	27389	1,7	12019	418	42	14401	306	76	126	
95	Activities of households as employers of domestic staff	933	0,1	609	6	1	313	3		1	
96	Extra-territorial organizations and bodies	11	0,0	11							

*)Field of activity declared when registered, according to CAEN classification

Table no. 7

**Operations carried on with the Trade Registers,
by counties and categories,
in April 2007**

County	Total of operations carried on		out of which:							
			New incorporations		Changes in statutory documents		out of which: of liquidation, dissolution		Strike off companies	
	No.	%	No.	%	No.	%	No.	%	No.	%
0	1	2	3	4	5	6	7	8	9	10
Total ROMÂNIA	99203	100,0	10908	11,0	84864	85,5	4404	4,4	3431	3,5
ALBA	816	100,0	186	22,8	588	72,1	4	0,5	42	5,1
ARAD	2132	100,0	300	14,1	1764	82,7	10	0,5	68	3,2
ARGES	4543	100,0	281	6,2	4209	92,6	106	2,3	53	1,2
BACAU	1293	100,0	230	17,8	1015	78,5	224	17,3	48	3,7
BIHOR	1642	100,0	435	26,5	1156	70,4	36	2,2	51	3,1
BISTRITA-NASAUD	1394	100,0	105	7,5	1252	89,8	101	7,2	37	2,7
BOTOSANI	1604	100,0	125	7,8	1149	71,6	1	0,1	330	20,6
BRASOV	5119	100,0	338	6,6	4760	93,0	33	0,6	21	0,4
BRAILA	761	100,0	115	15,1	584	76,7	14	1,8	62	8,1
BUZAU	2237	100,0	163	7,3	2029	90,7	491	21,9	45	2,0
CARAS-SEVERIN	1541	100,0	130	8,4	1389	90,1	17	1,1	22	1,4
CALARASI	460	100,0	76	16,5	376	81,7	7	1,5	8	1,7
CLUJ	5800	100,0	561	9,7	5095	87,8	57	1,0	144	2,5
CONSTANTA	2915	100,0	438	15,0	2398	82,3	13	0,4	79	2,7
COVASNA	483	100,0	125	25,9	339	70,2	2	0,4	19	3,9
DAMBOVITA	2286	100,0	177	7,7	1889	82,6	292	12,8	220	9,6
DOLJ	2043	100,0	251	12,3	1691	82,8	17	0,8	101	4,9
GALATI	3509	100,0	206	5,9	3266	93,1	184	5,2	37	1,1
GIURGIU	305	100,0	88	28,9	203	66,6	8	2,6	14	4,6
GORJ	698	100,0	113	16,2	555	79,5	11	1,6	30	4,3
HARGHITA	2212	100,0	195	8,8	1971	89,1	102	4,6	46	2,1
HUNEDOARA	1122	100,0	183	16,3	869	77,5	4	0,4	70	6,2
IALOMITA	1071	100,0	73	6,8	850	79,4			148	13,8
IASI	4817	100,0	444	9,2	4194	87,1	54	1,1	179	3,7
MARAMURES	3305	100,0	283	8,6	2910	88,0	146	4,4	112	3,4
MEHEDINTI	457	100,0	70	15,3	368	80,5	4	0,9	19	4,2
MURES	3183	100,0	285	9,0	2692	84,6	571	17,9	206	6,5
NEAMT	2297	100,0	237	10,3	2017	87,8	105	4,6	43	1,9
OLT	462	100,0	97	21,0	343	74,2	28	6,1	22	4,8
PRAHOVA	2195	100,0	421	19,2	1643	74,9	629	28,7	131	6,0
SALAJ	1464	100,0	139	9,5	1292	88,3	45	3,1	33	2,3
SATU MARE	971	100,0	172	17,7	763	78,6	183	18,8	36	3,7
SIBIU	1725	100,0	231	13,4	1432	83,0	18	1,0	62	3,6
SUCEAVA	1340	100,0	297	22,2	985	73,5	271	20,2	58	4,3
TELEORMAN	625	100,0	98	15,7	386	61,8	88	14,1	141	22,6
TIMIS	2439	100,0	442	18,1	1894	77,7	12	0,5	103	4,2
TULCEA	441	100,0	99	22,4	328	74,4	184	41,7	14	3,2
VASLUI	1076	100,0	99	9,2	945	87,8	1	0,1	32	3,0
VALCEA	673	100,0	155	23,0	487	72,4	6	0,9	31	4,6
VRANCEA	1596	100,0	113	7,1	1463	91,7	7	0,4	20	1,3
MUN. BUCURESTI	22729	100,0	2066	9,1	20237	89,0	315	1,4	426	1,9
ILFOV	1422	100,0	266	18,7	1088	76,5	3	0,2	68	4,8

Table no. 8

**The number of incorporations in the Trade Register,
by counties and sources of capital,
in April 2007**

County	Total		out of which:					Rnking by: *	
			Private capital			State majority capital			Mixed capital (state+priva)
			out of which:			out of which:			
			PF+AF	Companies	OC	RA	Companie s		Companie s
No.	%	No.	No.	No.	No.	No.	No.		
0	1	2	3	4	5	6	7	8	9
Total ROMÂNIA	10908	100,0	3300	7604		1	1	2	X
ALBA	186	1,7	72	114					21
ARAD	300	2,8	118	182					9
ARGES	281	2,6	83	198					13
BACAU	230	2,1	62	168					18
BIHOR	435	4,0	166	269					6
BISTRITA-NASAUD	105	1,0	22	83					34
BOTOSANI	125	1,1	68	57					29
BRASOV	338	3,1	95	243					8
BRAILA	115	1,1	28	87					31
BUZAU	163	1,5	60	103					25
CARAS-SEVERIN	130	1,2	48	82					28
CALARASI	76	0,7	26	50					40
CLUJ	561	5,1	185	376					2
CONSTANTA	438	4,0	96	342					5
COVASNA	125	1,1	69	56					30
DAMBOVITA	177	1,6	71	106					23
DOLJ	251	2,3	78	173					15
GALATI	206	1,9	61	145					19
GIURGIU	88	0,8	27	61					39
GORJ	113	1,0	31	82					32
HARGHITA	195	1,8	112	83					20
HUNEDOARA	183	1,7	43	140					22
IALOMITA	73	0,7	31	42					41
IASI	444	4,1	164	280					3
MARAMURES	283	2,6	78	205					12
MEHEDINTI	70	0,6	25	45					42
MURES	285	2,6	132	153					11
NEAMT	237	2,2	115	122					16
OLT	97	0,9	29	68					38
PRAHOVA	421	3,9	160	260			1		7
SALAJ	139	1,3	61	78					27
SATU MARE	172	1,6	62	110					24
SIBIU	231	2,1	60	170		1			17
SUCEAVA	297	2,7	125	172					10
TELEORMAN	98	0,9	42	56					37
TIMIS	442	4,1	82	360					4
TULCEA	99	0,9	41	58					35
VASLUI	99	0,9	43	56					36
VALCEA	155	1,4	59	96					26
VRANCEA	113	1,0	39	74					33
MUN. BUCURESTI	2066	18,9	296	1768				2	1
ILFOV	266	2,4	35	231					14

*) The total number of incorporations (col 1)

*** Less than 0,01%

Table no.9

**The number of incorporations in the Trade Register,
by counties and category
in April 2007**

County	Total		out of which:						RA	OC
			PF+AF	companies: 7607						
	No.	%		No.	SNC	SCS	SRL	SA	No.	No.
			No.		No.	No.	No.			
0	1	2	3	4	5	6	7	8	9	
Total ROMÂNIA	10908	100,0	3300	1	1	7556	49	1		
ALBA	186	1,7	72			112	2			
ARAD	300	2,8	118			182				
ARGES	281	2,6	83			197	1			
BACAU	230	2,1	62			167	1			
BIHOR	435	4,0	166			269				
BISTRITA-NASAUD	105	1,0	22			83				
BOTOSANI	125	1,1	68			56	1			
BRASOV	338	3,1	95			239	4			
BRAILA	115	1,1	28			87				
BUZAU	163	1,5	60			103				
CARAS-SEVERIN	130	1,2	48			82				
CALARASI	76	0,7	26			50				
CLUJ	561	5,1	185			369	7			
CONSTANTA	438	4,0	96			342				
COVASNA	125	1,1	69			56				
DAMBOVITA	177	1,6	71			106				
DOLJ	251	2,3	78			171	2			
GALATI	206	1,9	61			145				
GIURGIU	88	0,8	27			60	1			
GORJ	113	1,0	31			80	2			
HARGHITA	195	1,8	112			82	1			
HUNEDOARA	183	1,7	43			140				
IALOMITA	73	0,7	31			41	1			
IASI	444	4,1	164			278	2			
MARAMURES	283	2,6	78			204	1			
MEHEDINTI	70	0,6	25			45				
MURES	285	2,6	132			153				
NEAMT	237	2,2	115			122				
OLT	97	0,9	29			68				
PRAHOVA	421	3,9	160			258	3			
SALAJ	139	1,3	61			78				
SATU MARE	172	1,6	62		1	109				
SIBIU	231	2,1	60			169	1	1		
SUCEAVA	297	2,7	125			172				
TELEORMAN	98	0,9	42			54	2			
TIMIS	442	4,1	82	1		357	2			
TULCEA	99	0,9	41			58				
VASLUI	99	0,9	43			56				
VALCEA	155	1,4	59			96				
VRANCEA	113	1,0	39			72	2			
MUN. BUCURESTI	2066	18,9	296			1759	11			
ILFOV	266	2,4	35			229	2			

Table no. 10

**The number of incorporations in the Trade Register, by field of activity*
and categories in April 2007**

CAEN segment	Field of activity	Total		out of which:							
				PF+AF	companies: 7607				RA	OC	
		SNC	SCS		SRL	SA					
		No.	%	No.	No.	No.	No.	No.	No.	No.	
0	1	2	3	4	5	6	7	8	9	10	
	Total ROMÂNIA	10908	100,0	3300		1	1	7556	49	1	
1	Agriculture, hunting and related service activities	379	3,5	204				173	2		
2	Forestry, logging and related service activities	60	0,6	9				50		1	
5	Fishing, fish farming and related service activities	28	0,3	20				8			
10	Mining of coal and lignite; extraction of peat										
11	Extraction of crude petroleum and natural gas; service activities incidental to oil and gas extraction, excluding surveying	3	0,0	3							
12	Mining of uranium and thorium ores										
13	Mining of metal ores	1	0,0					1			
14	Other mining and quarrying	17	0,2					16	1		
15	Manufacture of food products and beverages	112	1,0	52				60			
16	Manufacture of tobacco products										
17	Manufacture of textiles	20	0,2	7				13			
18	Manufacture of wearing apparel; dressing and dyeing of fur	66	0,6	21				45			
19	Tanning and dressing of leather; manufacture of luggage, handbags, saddlery, harness and footwear	24	0,2					24			
20	Manufacture of wood and of products of wood and cork, except furniture; manufacture of articles of straw and plaiting materials	112	1,0	60				52			
21	Manufacture of pulp, paper and paper products	7	0,1	1				6			
22	Publishing, printing and reproduction of recorded media	63	0,6	4				59			
23	Manufacture of coke, refined petroleum products and nuclear fuel										
24	Manufacture of chemicals and chemical products	9	0,1					9			
25	Manufacture of rubber and plastic products	27	0,2	1				25	1		
26	Manufacture of other non-metallic mineral products	86	0,8	32				53	1		
27	Manufacture of basic metals	6	0,1	1				5			
28	Manufacture of fabricated metal products, except machinery and equipment	164	1,5	59				104	1		
29	Manufacture of machinery and equipment n.e.c.	10	0,1					10			
30	Manufacture of office machinery and computers	3	0,0					3			
31	Manufacture of electrical machinery and apparatus n.e.c.	6	0,1					6			
32	Manufacture of radio, television and communication equipment and apparatus	5	0,0	3				2			
33	Manufacture of medical, precision and optical instruments, watches and clocks	15	0,1	1				14			
34	Manufacture of motor vehicles, trailers and semi- trailers	5	0,0					5			
35	Manufacture of other transport equipment	11	0,1	1				10			
36	Manufacture of furniture; manufacturing n.e.c.	88	0,8	27				61			
37	Recycling	34	0,3	2				32			
40	Electricity, gas, steam and hot water supply	21	0,2	2				18	1		
41	Collection, purification and distribution of water	3	0,0	1				2			
45	Construction	1898	17,4	530				1367	1		

Table no. 11

**Number of companies registered and the amount
of subscribed capital, by county in April 2007**

County	Total registered companies		Subscribed capital		Average subscribed capital on company
	No.	%	thousand RONI	%	thousand RONI
0	1	2	3	4	5
Total ROMÂNIA	7607	100,0	455780,6	100,0	60,2
ALBA	114	1,5	497,0	0,1	4,4
ARAD	182	2,4	1468,1	0,3	8,1
ARGES	198	2,6	510,2	0,1	2,6
BACAU	168	2,2	138825,6	30,5	826,3
BIHOR	269	3,5	1689,4	0,4	6,3
BISTRITA-NASAUD	83	1,1	134,7	0,0	1,6
BOTOSANI	57	0,7	23,5	***	0,4
BRASOV	243	3,2	2428,0	0,5	10,1
BRAILA	87	1,1	74,6	0,0	0,9
BUZAU	103	1,4	16456,4	3,6	161,3
CARAS-SEVERIN	82	1,1	40,4	***	0,5
CALARASI	50	0,7	693,2	0,2	13,9
CLUJ	376	4,9	2681,1	0,6	7,2
CONSTANTA	342	4,5	1349,3	0,3	3,9
COVASNA	56	0,7	58,4	0,0	1,0
DAMBOVITA	106	1,4	310,9	0,1	3,0
DOLJ	173	2,3	952,3	0,2	5,5
GALATI	145	1,9	63,2	0,0	0,4
GIURGIU	61	0,8	145,3	0,0	2,4
GORJ	82	1,1	136,4	0,0	1,7
HARGHITA	83	1,1	192,4	0,0	2,3
HUNEDOARA	140	1,8	71,9	0,0	0,5
IALOMITA	42	0,6	12,3	***	0,3
IASI	280	3,7	1100,4	0,2	3,9
MARAMURES	205	2,7	173,6	0,0	0,9
MEHEDINTI	45	0,6	9,3	***	0,2
MURES	153	2,0	1936,5	0,4	12,7
NEAMT	122	1,6	54,6	0,0	0,4
OLT	68	0,9	22,7	***	0,3
PRAHOVA	261	3,4	371,9	0,1	1,4
SALAJ	78	1,0	40,7	***	0,5
SATU MARE	110	1,4	51,0	0,0	0,5
SIBIU	170	2,2	3523,5	0,8	20,8
SUCEAVA	172	2,3	72,2	0,0	0,4
TELEORMAN	56	0,7	288,7	0,1	5,4
TIMIS	360	4,7	1336,3	0,3	3,7
TULCEA	58	0,8	526,0	0,1	9,1
VASLUI	56	0,7	40,8	***	0,7
VALCEA	96	1,3	49,1	0,0	0,5
VRANCEA	74	1,0	211,0	0,0	2,9
MUN. BUCURESTI	1770	23,3	258109,6	56,6	146,7
ILFOV	231	3,0	19047,8	4,2	82,8

Note: The average does not include filials because according to the Law no.31/1990 they are not juridical persons

*** Less than 0,01%

Table no. 12

**Number of registered companies and the amount
of subscribed capital by category,
in April 2007**

Company type	Total registered companies		Subscribed capital		Average subscribed capital on company
	No.	%	thousand RONI	%	thousand RONI
0	1	2	3	4	5
Total ROMÂNIA	7607	100,0	455780,6	100,0	60,2
SNC	1	0,0	2,0	***	2,0
SCS	1	0,0			
SA	49	0,6	386840,6	84,9	10745,6
SRL	7556	99,3	68938,0	15,1	9,1
SCA					

Note: The average does not include filials because according to the Law no.31/1990 they are not juridical persons

*** Less than 0,01%

Diagram no.5

