



MINISTRY OF JUSTICE

THE NATIONAL TRADE REGISTER OFFICE

București, Bd. Unirii nr. 74, Bl. J3b, tronson II+III, sector 3; Telefon: +40 21 316.08.04, 316.08.10; Fax: +40 21 316.08.03 Cod poștal: 030837  
Website: [www.onrc.ro](http://www.onrc.ro); E-mail: [onrc@onrc.ro](mailto:onrc@onrc.ro); Cod de identificare Fiscală: 14942091

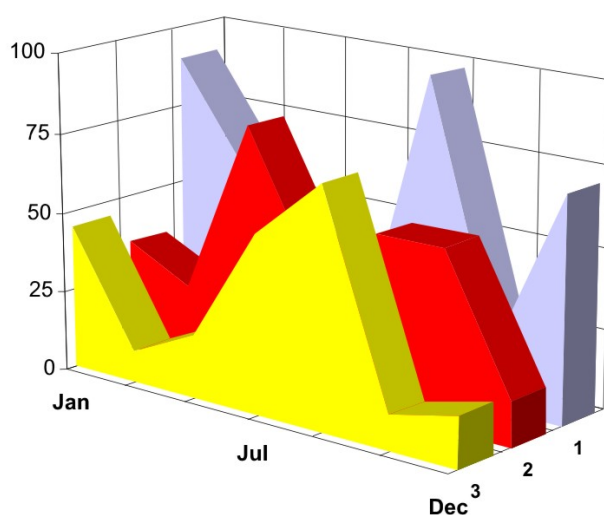
# PROCEEDINGS IN THE CENTRAL TRADE REGISTER

## STATISTICAL SYNTHESIS

OF

**RECORDS IN THE CENTRAL TRADE REGISTER**

**- the 31<sup>th</sup> of March 2007 - provisional data -**



- ISSUE No. 184 -

**MINISTRY OF JUSTICE  
THE NATIONAL TRADE REGISTER OFFICE**

---

- Operations of incorporation of companies, changes in statutory documents and strike-off of companies are based on Law No.26/1990 reissued, Law No.31/1990, reissued, OUG No.76/2001, reissued and Methodology Norms No. P/608/1998.
  
- This paper presents the trend in operations registered in The Trade Register Office attached to the law court of Bucharest and in the Trade Register Offices attached to the law court in each county of Romania.
  
- Information recorded in the Central Trade Register concern operations compulsory by law to be registered in the trade registers within the 42 trade register offices attached to the law courts.

*• No part of the content of this publication, in original or in any modified format, September be reproduced, stored in a retrieval system, or transmitted, in any form or by any means, without the prior permission in writing of The Ministry of Justice – The National Trade Register Office.*

*• The content of this publication September be referred to in articles, studies, books, as supporting or explanatory data under the condition only, the source of the information to be clearly and precisely specified.*

<b>1</b>	<b>Explanatory Note</b>	<b>1</b>
<b>2.1</b>	<b>Data for December 1990 –March 2007</b>	<b>3</b>
	Table no.1 – Operations registered in the Trade Register, by categories during the period of December 1990 –March 2007, in total by country and counties, rate of categories of operations in total operations country	3
	Table no.1.a – Operations registered in the Trade Register, by categories during the period of December 1990 –March 2007, in total by country and counties, counties’ rate in total country	4
	Table no. 3 – Number and structure of incorporations in the Trade Register, by years, during the period of December 1990-March 2007	5
	Table no.4 – The number of incorporations in the Trade Register, by counties and sources of capital, in the period December 1990 -March 2007	6
	Table no. 5 – The number of incorporations in the Trade Register, by counties and categories, during the period of December 1990 –March 2007	7
	Table no. 6 – The number of incorporations in the Trade Register, by field of activity and categories, during the period of December 1990 -March 2007	8
<b>2.2</b>	<b>Data for March 2007</b>	<b>10</b>
	Table no. 7 – Operations carried on with the Trade Registers, by counties and categories, in March 2007	10
	Table no. 8 – The number of incorporations in the Trade Register, by counties and sources of capital, in March 2007	11
	Table no. 9 – The number of incorporations in the Trade Register, by counties and category in March 2007	12
	Table no. 10 –The number of incorporations in the Trade Register, by field of activity and categories in March 2007	13
	Table no. 11 – Number of companies registered and the amount of subscribed capital, by county in March 2007	15
	Table no. 12– Number of registered companies and the amount of subscribed capital by category, in March 2007	16
	Diagram no. 5 – Average subscribed capital on company in March 2007	16

The Trade Register Office is set-up by Law No. 26/1990, reissued and modified by OUG No. 129/2002, became an active institution since December 1990 and is structured in two levels:

- the national level, represented by the National Trade Register Office organised under the Ministry of Justice
- the local level, represented by the 42 trade register offices attached to the law courts and co-ordinated by the National Trade Register Office

The categories of businessmen compulsory to register in the trade register are:

- natural persons tradesmen and family associations doing usually commercial acts, commercial companies, national companies, companies under state supervision, and co-operative organisations
- subsidiaries registered as commercial companies and legal persons following the legal proceedings of set-up, activity and incorporation according to the type of the legally set-up company.

### **Usual Terms:**

- incorporation – represents the registration of the company in the trade registry awarding the quality of legal person.

- other statutory documents – represent the official registration of the changes occurred in a company's life, such as: changes in headquarters' address, increase or decrease of the issued capital, merger, liquidation, strike-off, etc.

- strike-off – represents the removal of a company from the trade registry, due to dissolution and liquidation, being also the very moment the company loses its quality of legal person. Data also include the companies under the provisions of Law No. 314/2001.

- change of certificate – represents the obligation of companies set-up before OGU No. 76/2001 republished came in force, to request the incorporation certificate and fiscal registration certificate to be replaced with the new registration certificate containing the given unique registration code.

The ratio of these changes is being calculated as a proportion between the effective number of changes and the number of active companies due to operate the change.

- active company from the legal point of view – a company registered in the trade register and which is not affected by any of the situations leading to the temporary or permanently loss of this status (e.g. dissolution, liquidation, strike-off)

- operations represent all the records in the trade registry including incorporations, other statutory documents and strike-off of companies, irrespective of the object of activity, company's type and origin of the subscribed capital (local or foreign investment).

• **Terms used in tables and charts**

➤ **Number of companies:** represents, depending on the specific table, the number of companies incorporated in the related period, the number of companies being struck-off from the trade registry.

➤ **Amount of the subscribed capital:**

- **total, in local currency:** the amount of the subscribed capital resulted from totalising the amount subscribed (in cash and in kind) in local currency (ROL)

➤ **Regional development:**

<i>North-East:</i>	Suceava, Botoșani, Neamț, Iași, Bacău, Vaslui.
<i>South-East:</i>	Vrancea, Galați, Buzău, Brăila, Tulcea, Constanța.
<i>South-Muntenia:</i>	Argeș, Dâmbovița, Prahova, Teleorman, Giurgiu, Călărași, Ialomița.
<i>South-West Oltenia:</i>	Gorj, Vâlcea, Dolj, Mehedinți, Olt.
<i>West:</i>	Arad, Caraș-Severin, Hunedoara, Timiș.
<i>North-West:</i>	Bihor, Bistrița, Cluj, Satu Mare, Sălaj, Maramureș.
<i>Center:</i>	Alba, Brașov, Covasna, Harghita, Mureș, Sibiu.
<i>Bucharest-Ilfov:</i>	București, Ilfov.

CAEN code – The Classification of Activities in the National Economy was approved by HG No. 656/1997, modified by Order No 601 of the President of National Institute of Statistics being compatible with the international classification used in statistic reports and official documents. Activities are ranked upon homogeneity principle by sections, divisions, groups and classes.

Common abbreviations

- **PF** - Natural Persons Tradesman
- **AF** - Family association
- **SNC** - General Partnership
- **SCS** - Limited Partnership
- **SA** - Joint stock company
- **SRL** - Limited liability company
- **RA** - Company Under State Supervision
- **OC** - Co-operative organisation

Source:

The integrated IT system of the trade registry is designed by The National Trade Registry Office according to the provisions of the related legislation in force. The source of information is the computerised system of the trade registers handled by the Trade Register Offices attached to the law courts.

Table no. 1

**Operations registered in the Trade Register, by categories  
during the period of December 1990 - March 2007 in total by country and counties,  
- rate of categories of operations in total operations/country -**

Counties	Total of registered operations		out of which :							
			Registered companies		Changes in statutory documents		out of which : of liquidation, dissolution		Strike off companies	
	No.	%	No.	%	No.	%	No.	%	No.	%
0	1	2	3	4	5	6	7	8	11	12
<b>Total ROMÂNIA</b>	<b>8028582</b>	<b>100,0</b>	<b>1594943</b>	<b>100,0</b>	<b>5948907</b>	<b>100,0</b>	<b>9911</b>	<b>100,0</b>	<b>484732</b>	<b>100,0</b>
ALBA	109704	1,4	24898	1,6	80308	1,3	371	3,7	4498	0,9
ARAD	178760	2,2	39238	2,5	129773	2,2	369	3,7	9749	2,0
ARGES	193112	2,4	41119	2,6	143376	2,4	197	2,0	8617	1,8
BACAU	186325	2,3	40163	2,5	134661	2,3	1003	10,1	11501	2,4
BIHOR	246030	3,1	47920	3,0	184216	3,1	303	3,1	13894	2,9
BISTRITA-NASAUD	98424	1,2	19435	1,2	73087	1,2	72	0,7	5902	1,2
BOTOSANI	74418	0,9	19684	1,2	49902	0,8	66	0,7	4832	1,0
BRASOV	266227	3,3	49605	3,1	205976	3,5	149	1,5	10646	2,2
BRAILA	101133	1,3	22073	1,4	75769	1,3	61	0,6	3291	0,7
BUZAU	149034	1,9	29364	1,8	109599	1,8	146	1,5	10071	2,1
CARAS-SEVERIN	102119	1,3	19735	1,2	74407	1,3	41	0,4	7977	1,6
CALARASI	70220	0,9	16100	1,0	49325	0,8	79	0,8	4795	1,0
CLUJ	358737	4,5	73098	4,6	273329	4,6	197	2,0	12310	2,5
CONSTANTA	346080	4,3	66869	4,2	254685	4,3	926	9,3	24526	5,1
COVASNA	72168	0,9	13623	0,9	54370	0,9	18	0,2	4175	0,9
DAMBOVITA	122578	1,5	29869	1,9	79842	1,3	98	1,0	12867	2,7
DOLJ	207018	2,6	42319	2,7	152595	2,6	215	2,2	12104	2,5
GALATI	222612	2,8	37819	2,4	171192	2,9	125	1,3	13601	2,8
GIURGIU	55351	0,7	12919	0,8	37546	0,6	47	0,5	4886	1,0
GORJ	107426	1,3	19125	1,2	82401	1,4	48	0,5	5900	1,2
HARGHITA	116552	1,5	24214	1,5	88309	1,5	51	0,5	4029	0,8
HUNEDOARA	159494	2,0	32911	2,1	113568	1,9	126	1,3	13015	2,7
IALOMITA	75918	0,9	14974	0,9	55700	0,9	78	0,8	5244	1,1
IASI	272353	3,4	49158	3,1	212396	3,6	597	6,0	10799	2,2
MARAMURES	166804	2,1	41034	2,6	115624	1,9	159	1,6	10146	2,1
MEHEDINTI	83381	1,0	18106	1,1	57531	1,0	55	0,6	7744	1,6
MURES	199815	2,5	40195	2,5	147176	2,5	83	0,8	12444	2,6
NEAMT	168785	2,1	35294	2,2	119999	2,0	304	3,1	13492	2,8
OLT	103751	1,3	22693	1,4	72343	1,2	21	0,2	8715	1,8
PRAHOVA	277674	3,5	52561	3,3	210891	3,5	274	2,8	14222	2,9
SALAJ	67825	0,8	15370	1,0	47996	0,8	29	0,3	4459	0,9
SATU MARE	128977	1,6	26872	1,7	92692	1,6	26	0,3	9413	1,9
SIBIU	174095	2,2	30796	1,9	136211	2,3	31	0,3	7088	1,5
SUCEAVA	191608	2,4	40715	2,6	135436	2,3	29	0,3	15457	3,2
TELEORMAN	87586	1,1	18076	1,1	65408	1,1	49	0,5	4102	0,8
TIMIS	304243	3,8	55610	3,5	233100	3,9	271	2,7	15533	3,2
TULCEA	81042	1,0	16518	1,0	59568	1,0	149	1,5	4956	1,0
VASLUI	92234	1,1	20498	1,3	63535	1,1	197	2,0	8201	1,7
VALCEA	126013	1,6	26476	1,7	91598	1,5	138	1,4	7939	1,6
VRANCEA	101442	1,3	19801	1,2	77676	1,3	51	0,5	3965	0,8
MUN. BUCURESTI	1676035	20,9	302747	19,0	1261782	21,2	2641	26,6	111506	23,0
ILFOV	105479	1,3	25349	1,6	74009	1,2	21	0,2	6121	1,3

\*) according to the effect of Law No. 314/2001, art.1 și art. 6

\*\*\* Less than 0,01%

Table no. 2

**Operations registered in the Trade Register, by categories  
during the period of December 1990 - March 2007, in total by country and counties,  
- rate of categories of operations in total operations/country -**

Counties	Total of registered operations		out of which :							
			Registered companies		Changes in statutory documents		out of which : of liquidation, dissolution		Strike off companies	
	No.	%	No.	%	No.	%	No.	%	No.	%
0	1	2	3	4	5	6	7	8	11	12
<b>Total ROMÂNIA</b>	<b>8028582</b>	<b>100,0</b>	<b>1594943</b>	<b>19,9</b>	<b>5948907</b>	<b>74,1</b>	<b>9911</b>	<b>0,1</b>	<b>484732</b>	<b>6,0</b>
ALBA	109704	100,0	24898	22,7	80308	73,2	371	0,3	4498	4,1
ARAD	178760	100,0	39238	22,0	129773	72,6	369	0,2	9749	5,5
ARGES	193112	100,0	41119	21,3	143376	74,2	197	0,1	8617	4,5
BACAU	186325	100,0	40163	21,6	134661	72,3	1003	0,5	11501	6,2
BIHOR	246030	100,0	47920	19,5	184216	74,9	303	0,1	13894	5,6
BISTRITA-NASAUD	98424	100,0	19435	19,7	73087	74,3	72	0,1	5902	6,0
BOTOSANI	74418	100,0	19684	26,5	49902	67,1	66	0,1	4832	6,5
BRASOV	266227	100,0	49605	18,6	205976	77,4	149	0,1	10646	4,0
BRAILA	101133	100,0	22073	21,8	75769	74,9	61	0,1	3291	3,3
BUZAU	149034	100,0	29364	19,7	109599	73,5	146	0,1	10071	6,8
CARAS-SEVERIN	102119	100,0	19735	19,3	74407	72,9	41	0,0	7977	7,8
CALARASI	70220	100,0	16100	22,9	49325	70,2	79	0,1	4795	6,8
CLUJ	358737	100,0	73098	20,4	273329	76,2	197	0,1	12310	3,4
CONSTANTA	346080	100,0	66869	19,3	254685	73,6	926	0,3	24526	7,1
COVASNA	72168	100,0	13623	18,9	54370	75,3	18	0,0	4175	5,8
DAMBOVITA	122578	100,0	29869	24,4	79842	65,1	98	0,1	12867	10,5
DOLJ	207018	100,0	42319	20,4	152595	73,7	215	0,1	12104	5,8
GALATI	222612	100,0	37819	17,0	171192	76,9	125	0,1	13601	6,1
GIURGIU	55351	100,0	12919	23,3	37546	67,8	47	0,1	4886	8,8
GORJ	107426	100,0	19125	17,8	82401	76,7	48	0,0	5900	5,5
HARGHITA	116552	100,0	24214	20,8	88309	75,8	51	0,0	4029	3,5
HUNEDOARA	159494	100,0	32911	20,6	113568	71,2	126	0,1	13015	8,2
IALOMITA	75918	100,0	14974	19,7	55700	73,4	78	0,1	5244	6,9
IASI	272353	100,0	49158	18,0	212396	78,0	597	0,2	10799	4,0
MARAMURES	166804	100,0	41034	24,6	115624	69,3	159	0,1	10146	6,1
MEHEDINTI	83381	100,0	18106	21,7	57531	69,0	55	0,1	7744	9,3
MURES	199815	100,0	40195	20,1	147176	73,7	83	0,0	12444	6,2
NEAMT	168785	100,0	35294	20,9	119999	71,1	304	0,2	13492	8,0
OLT	103751	100,0	22693	21,9	72343	69,7	21	0,0	8715	8,4
PRAHOVA	277674	100,0	52561	18,9	210891	75,9	274	0,1	14222	5,1
SALAJ	67825	100,0	15370	22,7	47996	70,8	29	0,0	4459	6,6
SATU MARE	128977	100,0	26872	20,8	92692	71,9	26	0,0	9413	7,3
SIBIU	174095	100,0	30796	17,7	136211	78,2	31	0,0	7088	4,1
SUCEAVA	191608	100,0	40715	21,2	135436	70,7	29	0,0	15457	8,1
TELEORMAN	87586	100,0	18076	20,6	65408	74,7	49	0,1	4102	4,7
TIMIS	304243	100,0	55610	18,3	233100	76,6	271	0,1	15533	5,1
TULCEA	81042	100,0	16518	20,4	59568	73,5	149	0,2	4956	6,1
VASLUI	92234	100,0	20498	22,2	63535	68,9	197	0,2	8201	8,9
VALCEA	126013	100,0	26476	21,0	91598	72,7	138	0,1	7939	6,3
VRANCEA	101442	100,0	19801	19,5	77676	76,6	51	0,1	3965	3,9
MUN. BUCURESTI	1676035	100,0	302747	18,1	1261782	75,3	2641	0,2	111506	6,7
ILFOV	105479	100,0	25349	24,0	74009	70,2	21	0,0	6121	5,8

Table no.3

Number and structure of incorporations in the Trade Register, by years,  
March 2007

Period (year, month)	Registered companies		Percentage	
	No.	%	%	
0	1	2	3	
<b>Total, 31 Februaryy 2006, out of which</b>	<b>1594943</b>	<b>100,00</b>		
Year 1990	81	0,01		
Year 1991	95840	6,01		
Year 1992	137456	8,62		
Year 1993	117078	7,34		
Year 1994	137445	8,62		
Year 1995	65479	4,11		
Year 1996	62089	3,89		
Year 1997	55663	3,49		
Year 1998	63878	4,01		
Year 1999	57197	3,59		
Year 2000	57291	3,59		
Year 2001	61265	3,84		
Year 2002	84780	5,32		
Year 2003	123582	7,75		
Year 2004	144284	9,05		
Year 2005	157375	9,87		
Year 2006	135211	8,48		
<b>Year 2007 (I - XII) out of which :</b>	<b>38949</b>			<b>100,0</b>
January	10979			28,2
February	13249			34,0
March	14721			37,8

Note: Column 2 reveals the annual structure of incorporations; column 3 reveals the structure by months during the current year.

\*\*\* Less than 0,01%  
**Diagram no.1**

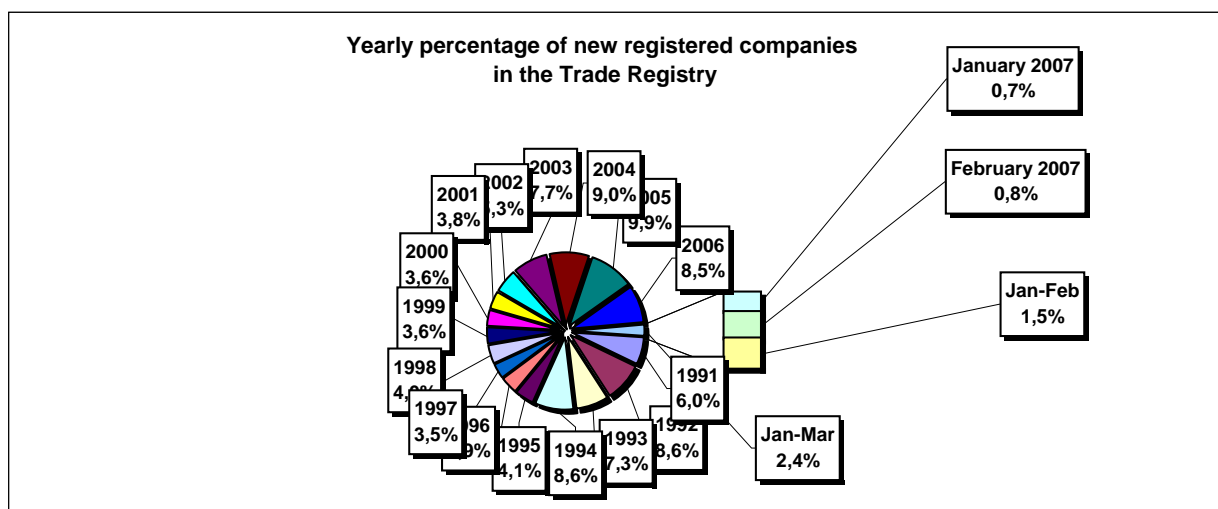


Table no. 4

**The number of incorporations in the Trade Register, by counties and sources of capital, in the period December 1990 - March 2007**

Counties	Total		out of which:					Ranking by: *	
			Private capital			State majority capital			Mixed capital (state+private)
			out of which:			out of which:			
			PF+AF	Companies	OC	RA	Companies		Companies
No.	%	No.	No.	No.	No.	No.	No.		
0	1	2	3	4	5	6	7	8	9
<b>Total ROMÂNIA</b>	<b>1594943</b>	<b>100,0</b>	<b>409075</b>	<b>1168187</b>	<b>5396</b>	<b>1339</b>	<b>2362</b>	<b>8584</b>	<b>X</b>
ALBA	24898	1,6	8583	15919	141	38	47	170	25
ARAD	39239	2,5	14940	23742	157	26	40	334	15
ARGES	41119	2,6	13274	27467	168	29	29	152	10
BACAU	40163	2,5	13331	26374	158	35	42	223	14
BIHOR	47920	3,0	10921	36446	146	37	62	308	8
BISTRITA-NASAUD	19435	1,2	6912	12268	98	19	29	109	33
BOTOSANI	19684	1,2	8986	10264	122	21	172	119	32
BRASOV	49605	3,1	10215	38975	114	44	87	170	6
BRAILA	22073	1,4	5523	16217	96	28	43	166	28
BUZAU	29364	1,8	8554	20469	142	26	42	131	21
CARAS-SEVERIN	19735	1,2	6811	12585	102	35	65	137	31
CALARASI	16100	1,0	4733	11091	86	18	77	95	38
CLUJ	73098	4,6	18365	54229	150	52	40	262	2
CONSTANTA	66869	4,2	12764	53261	203	51	49	541	3
COVASNA	13623	0,9	4601	8789	68	24	32	109	41
DAMBOVITA	29869	1,9	13634	15844	134	29	75	153	20
DOLJ	42319	2,7	8521	33336	162	40	57	203	9
GALATI	37819	2,4	7466	29994	135	30	51	143	16
GIURGIU	12919	0,8	3080	9518	80	22	109	110	42
GORJ	19125	1,2	4514	14194	184	50	83	100	34
HARGHITA	24214	1,5	9550	14283	86	23	43	229	26
HUNEDOARA	32911	2,1	8674	23744	81	38	92	282	18
IALOMITA	14974	0,9	5731	9017	74	15	46	91	40
IASI	49158	3,1	13427	35119	164	34	70	344	7
MARAMURES	41034	2,6	16600	24112	123	37	39	123	11
MEHEDINTI	18106	1,1	5752	12128	82	19	27	98	35
MURES	40195	2,5	14801	25007	156	30	34	167	13
NEAMT	35294	2,2	13007	21902	161	29	30	165	17
OLT	22693	1,4	8958	13361	161	26	64	123	27
PRAHOVA	52561	3,3	16081	35913	177	50	69	271	5
SALAJ	15370	1,0	5960	9193	107	19	28	63	39
SATU MARE	26872	1,7	8758	17831	88	19	42	134	22
SIBIU	30796	1,9	7448	22931	119	32	108	158	19
SUCEAVA	40715	2,6	19443	20756	202	30	64	220	12
TELEORMAN	18076	1,1	6244	11433	152	21	44	182	36
TIMIS	55610	3,5	8832	46184	140	38	68	348	4
TULCEA	16518	1,0	5678	10502	66	18	42	212	37
VASLUI	20498	1,3	9921	10276	109	16	41	135	29
VALCEA	26476	1,7	10434	15684	168	40	37	113	23
VRANCEA	19801	1,2	6023	13517	104	16	27	114	30
MUN. BUCURESTI	302746	19,0	18757	282520	138	115	103	1113	1
ILFOV	25349	1,6	3268	21792	92	20	13	164	24

\*) The total number of incorporations (col 1)

\*\*\* Less than 0,01%

Table no. 5

**The number of incorporations in the Trade Register,  
by counties and categories, during the period of  
December 1990 - March 2007**

County	Total		out of which:						RA	OC
			PF+AF	companies: 1179133						
	SNC	SCS		SRL	SA	No.	No.			
	No.	%	No.	No.	No.			No.	No.	No.
0	1	2	3	4	5	6	7	8	9	
<b>Total ROMÂNIA</b>	<b>1594943</b>	<b>100,0</b>	<b>409075</b>	<b>32652</b>	<b>1564</b>	<b>1112968</b>	<b>31943</b>	<b>1339</b>	<b>5396</b>	
ALBA	24898	1,6	8583	890	11	14686	549	38	141	
ARAD	39238	2,5	14940	53	11	23379	671	26	157	
ARGES	41119	2,6	13274	107	14	26715	812	29	168	
BACAU	40163	2,5	13331	1299	4	24613	722	35	158	
BIHOR	47920	3,0	10921	126	47	35757	886	37	146	
BISTRITA-NASAUD	19435	1,2	6912	146	21	11828	411	19	98	
BOTOSANI	19684	1,2	8986	468	1	9637	449	21	122	
BRASOV	49605	3,1	10215	239	20	38134	839	44	114	
BRAILA	22073	1,4	5523	376	12	15522	516	28	96	
BUZAU	29364	1,8	8554	3747	46	16286	563	26	142	
CARAS-SEVERIN	19735	1,2	6811	117	8	12200	462	35	102	
CALARASI	16100	1,0	4733	609	3	10303	348	18	86	
CLUJ	73098	4,6	18365	2112	18	51157	1244	52	150	
CONSTANTA	66869	4,2	12764	311	23	52057	1460	51	203	
COVASNA	13623	0,9	4601	148	4	8482	296	24	68	
DAMBOVITA	29869	1,9	13634	60	8	15518	486	29	134	
DOLJ	42319	2,7	8521	1560	8	31165	863	40	162	
GALATI	37819	2,4	7466	1574	6	27777	831	30	135	
GIURGIU	12919	0,8	3080	35	8	9373	321	22	80	
GORJ	19125	1,2	4514	29	1	13863	484	50	184	
HARGHITA	24214	1,5	9550	62	6	14004	483	23	86	
HUNEDOARA	32911	2,1	8674	1166	98	22190	664	38	81	
IALOMITA	14974	0,9	5731	266	11	8534	343	15	74	
IASI	49158	3,1	13427	506	111	33922	992	34	164	
MARAMURES	41034	2,6	16600	1927	23	21740	583	37	123	
MEHEDINTI	18106	1,1	5752	427	3	11498	325	19	82	
MURES	40195	2,5	14801	37	34	24483	654	30	156	
NEAMT	35294	2,2	13007	3293	30	18111	663	29	161	
OLT	22693	1,4	8958	1611	1	11452	484	26	161	
PRAHOVA	52561	3,3	16081	3122	14	32238	879	50	177	
SALAJ	15370	1,0	5960	600	4	8392	288	19	107	
SATU MARE	26872	1,7	8758	283	5	17253	466	19	88	
SIBIU	30796	1,9	7448	776	48	21730	643	32	119	
SUCEAVA	40715	2,6	19443	438	8	20015	579	30	202	
TELEORMAN	18076	1,1	6244	272	399	10579	409	21	152	
TIMIS	55610	3,5	8832	607	27	44734	1232	38	140	
TULCEA	16518	1,0	5678	1363	114	8807	472	18	66	
VASLUI	20498	1,3	9921	90	12	9949	401	16	109	
VALCEA	26476	1,7	10434	364	6	14982	482	40	168	
VRANCEA	19801	1,2	6023	356	10	12850	442	16	104	
MUN. BUCURESTI	302747	19,0	18757	1031	296	275746	6663	115	138	
ILFOV	25349	1,6	3268	49	30	21307	583	20	92	

Table no. 6

**The number of incorporations in the Trade Register, by field of activity\*  
during the period of December 1990 - March 2007**

CAEN segment	Field of activity	Total		out of which:						
				PF+AF	companies: 1179133				RA	OC
		No.	%		No.	SNC	SCS	SRL		
				No.		No.	No.	No.	No.	No.
0	1	2	3	4	5	6	7	8	9	10
	<b>Total ROMANIA</b>	<b>1594943</b>	<b>100,0</b>	<b>409075</b>	<b>32652</b>	<b>1564</b>	<b>1112968</b>	<b>31943</b>	<b>1339</b>	<b>5396</b>
1	Agriculture, hunting and related service activities	64272	4,0	16128	2024	44	42121	3785	53	117
2	Forestry, logging and related service activities	8505	0,5	1111	152	3	6919	222	90	8
5	Fishing, fish farming and related service activities	3148	0,2	1798	17	3	1276	54		
10	Mining of coal and lignite; extraction of peat	117	0,0	2			79	32	4	
11	Extraction of crude petroleum and natural gas; service activities incidental to oil and gas extraction, excluding surveying	347	0,0	13	1		163	124	46	
12	Mining of uranium and thorium ores	133	0,0	32			95	6		
13	Mining of metal ores	534	0,0	163			308	55	8	
14	Other mining and quarrying	1657	0,1	109	9	1	1366	169	2	1
15	Manufacture of food products and beverages	73711	4,6	14604	3260	149	53587	1858	5	248
16	Manufacture of tobacco products	291	0,0	47			212	31	1	
17	Manufacture of textiles	11805	0,7	2402	556	16	8280	406		145
18	Manufacture of wearing apparel; dressing and dyeing of fur	21085	1,3	4808	875	38	14700	358	1	305
19	Tanning and dressing of leather; manufacture of luggage, handbags, saddlery, harness and footwear	5341	0,3	916	112	6	4132	123	1	51
20	Manufacture of wood and of products of wood and cork, except furniture; manufacture of articles of straw and plaiting materials	25321	1,6	9003	575	29	15165	498	9	42
21	Manufacture of pulp, paper and paper products	1817	0,1	124	21	1	1560	98		13
22	Publishing, printing and reproduction of recorded media	11985	0,8	966	317	21	10252	405	14	10
23	Manufacture of coke, refined petroleum products and nuclear fuel	261	0,0	24			201	34	2	
24	Manufacture of chemicals and chemical products	3733	0,2	120	89	1	3134	377	6	6
25	Manufacture of rubber and plastic products	6321	0,4	576	314	7	5140	259		24
26	Manufacture of other non-metallic mineral products	9332	0,6	2850	212	6	5860	385	5	14
27	Manufacture of basic metals	2448	0,2	171	39	3	2018	207	3	7
28	Manufacture of fabricated metal products, except machinery and equipment	17458	1,1	4292	361	23	11986	723	11	62
29	Manufacture of machinery and equipment n.e.c.	3845	0,2	108	44	7	3241	421	19	5
30	Manufacture of office machinery and computers	1780	0,1	16	25	4	1655	80		
31	Manufacture of electrical machinery and apparatus n.e.c.	1963	0,1	112	44	6	1651	144		6
32	Manufacture of radio, television and communication equipment and apparatus	874	0,1	60	14	4	722	73		1
33	Manufacture of medical, precision and optical instruments, watches and clocks	2661	0,2	639	17	2	1895	104		4
34	Manufacture of motor vehicles, trailers and semi-trailers	923	0,1	31	31	3	730	126		2
35	Manufacture of other transport equipment	1937	0,1	285	86	7	1360	124	73	2
36	Manufacture of furniture; manufacturing n.e.c.	15806	1,0	4494	284	16	10513	336	5	158
37	Recycling	4977	0,3	434	51	5	4313	173		1
40	Electricity, gas, steam and hot water supply	2989	0,2	837	3	1	1531	529	88	
41	Collection, purification and distribution of water	3561	0,2	1627	2		1654	205	73	
45	Construction	99236	6,2	25843	611	43	70163	2446	53	77

**Table no. 6**  
(continuing)

**The number of incorporations in the Trade Register, by field of activity\*  
and categories, during the period of December 1990 - March 2007**

CAEN segment	Field of activity	Total		out of which:						RA	OC
				PF+AF	companies: 1179133						
					SNC	SCS	SRL	SA			
					No.	No.	No.	No.			
0	1	2	3	4	5	6	7	8	9	10	
	<b>Total ROMÂNIA</b>	<b>1594943</b>	<b>100,0</b>	<b>409075</b>	<b>32652</b>	<b>1564</b>	<b>1112968</b>	<b>31943</b>	<b>1339</b>	<b>5396</b>	
50	Sale, maintenance and repair of motor vehicles and motorcycles; retail sale of automotive fuel	55153	3,5	8753	1244		44049	1025	6	42	
51	Wholesale trade and commission trade, except of motor vehicles and motorcycles	205844	12,9	18412	4524	150	179143	3298	35	282	
52	Retail trade, except of motor vehicles and motorcycles; repair of personal and household goods	505589	31,7	179366	11915	557	308867	2493	6	2384	
55	Hotels and restaurants	61420	3,9	14538	1635	126	44165	788	73	95	
60	Land transport; transport via pipelines	83160	5,2	36287	845	37	44891	1057	33	10	
61	Water transport	868	0,1	163	82	8	480	64	70	1	
62	Air transport	301	0,0	18			225	48	10		
63	Supporting and auxiliary transport activities; activities of travel agencies	10622	0,7	712	220	14	9129	440	96	11	
64	Post and telecommunications	7488	0,5	723	11	1	6435	304	11	3	
65	Financial intermediation, except insurance and pension funding	6522	0,4	147	15		2959	2366	2	1033	
66	Insurance and pension funding, except compulsory social security	2054	0,1	613	1		515	924		1	
67	Activities auxiliary to financial intermediation	7031	0,4	1272	7	2	5455	287		8	
70	Real estate activities	24510	1,5	757	28	9	23046	646	17	7	
71	Renting of machinery and equipment without operator and of personal and household goods	3578	0,2	682	116	8	2606	95	70	1	
72	Computer and related activities	24360	1,5	5027	120	13	18812	383	2	3	
73	Research and development	1750	0,1	248	11	2	1272	172	43	2	
74	Other business activities	114162	7,2	23568	792	74	87887	1674	106	60	
75	Public administration and defence; compulsory social security	362	0,0	90	5		219	26	21	1	
80	Education	6949	0,4	3425	62	6	3391	65			
85	Health and social work	16534	1,0	2141	233	15	14058	83	3	1	
90	Sewage and refuse disposal, sanitation and similar activities	968	0,1	102	13	2	722	109	18		
91	Activities of membership organizations n.e.c.	214	0,0	94	1		101	15		3	
92	Recreational, cultural and sporting activities	17186	1,1	4667	202	14	11921	301	69	12	
93	Other service activities	27144	1,7	11871	418	42	14305	305	76	126	
95	Activities of households as employers of domestic staff	919	0,1	596	6	1	312	3		1	
96	Extra-territorial organizations and bodies	11	0,0	11							

Table no. 7

**Operations carried on with the Trade Registers,  
by counties and categories,  
in March 2007**

County	Total of operations carried on		out of which:							
			New incorporations		Changes in statutory documents		out of which: of liquidation, dissolution		Strike off companies	
	No.	%	No.	%	No.	%	No.	%	No.	%
0	1	2	3	4	5	6	7	8	9	10
<b>Total ROMÂNIA</b>	<b>111133</b>	<b>100,0</b>	<b>14721</b>	<b>13,2</b>	<b>91677</b>	<b>82,5</b>	<b>4404</b>	<b>4,0</b>	<b>4735</b>	<b>4,3</b>
ALBA	1167	100,0	241	20,7	844	72,3	4	0,3	82	7,0
ARAD	2871	100,0	429	14,9	2274	79,2	10	0,3	168	5,9
ARGES	3821	100,0	378	9,9	3350	87,7	106	2,8	93	2,4
BACAU	1679	100,0	274	16,3	1353	80,6	224	13,3	52	3,1
BIHOR	2457	100,0	602	24,5	1749	71,2	36	1,5	106	4,3
BISTRITA-NASAUD	1563	100,0	170	10,9	1333	85,3	101	6,5	60	3,8
BOTOSANI	1110	100,0	171	15,4	857	77,2	1	0,1	82	7,4
BRASOV	4843	100,0	459	9,5	4326	89,3	33	0,7	58	1,2
BRAILA	987	100,0	143	14,5	785	79,5	14	1,4	59	6,0
BUZAU	1396	100,0	235	16,8	1077	77,1	491	35,2	84	6,0
CARAS-SEVERIN	1606	100,0	155	9,7	1432	89,2	17	1,1	19	1,2
CALARASI	536	100,0	138	25,7	386	72,0	7	1,3	12	2,2
CLUJ	7202	100,0	862	12,0	6196	86,0	57	0,8	144	2,0
CONSTANTA	3976	100,0	474	11,9	3405	85,6	13	0,3	97	2,4
COVASNA	541	100,0	131	24,2	389	71,9	2	0,4	21	3,9
DAMBOVITA	1560	100,0	246	15,8	1262	80,9	292	18,7	52	3,3
DOLJ	2307	100,0	409	17,7	1814	78,6	17	0,7	84	3,6
GALATI	3299	100,0	321	9,7	2899	87,9	184	5,6	79	2,4
GIURGIU	530	100,0	154	29,1	351	66,2	8	1,5	25	4,7
GORJ	1167	100,0	168	14,4	843	72,2	11	0,9	156	13,4
HARGHITA	2426	100,0	271	11,2	2111	87,0	102	4,2	44	1,8
HUNEDOARA	2163	100,0	268	12,4	1598	73,9	4	0,2	297	13,7
IALOMITA	983	100,0	116	11,8	806	82,0			61	6,2
IASI	5000	100,0	602	12,0	4323	86,5	54	1,1	75	1,5
MARAMURES	3435	100,0	292	8,5	2995	87,2	146	4,3	148	4,3
MEHEDINTI	660	100,0	113	17,1	524	79,4	4	0,6	23	3,5
MURES	4357	100,0	369	8,5	3466	79,6	571	13,1	522	12,0
NEAMT	2466	100,0	268	10,9	2109	85,5	105	4,3	89	3,6
OLT	643	100,0	142	22,1	468	72,8	28	4,4	33	5,1
PRAHOVA	2430	100,0	485	20,0	1806	74,3	629	25,9	139	5,7
SALAJ	1533	100,0	165	10,8	1315	85,8	45	2,9	53	3,5
SATU MARE	1336	100,0	304	22,8	999	74,8	183	13,7	33	2,5
SIBIU	2433	100,0	292	12,0	2090	85,9	18	0,7	51	2,1
SUCEAVA	1360	100,0	356	26,2	903	66,4	271	19,9	101	7,4
TELEORMAN	549	100,0	150	27,3	357	65,0	88	16,0	42	7,7
TIMIS	5950	100,0	613	10,3	4362	73,3	12	0,2	975	16,4
TULCEA	439	100,0	113	25,7	304	69,2	184	41,9	22	5,0
VASLUI	1183	100,0	159	13,4	975	82,4	1	0,1	49	4,1
VALCEA	945	100,0	200	21,2	701	74,2	6	0,6	44	4,7
VRANCEA	1943	100,0	160	8,2	1718	88,4	7	0,4	65	3,3
MUN. BUCURESTI	22492	100,0	2728	12,1	19461	86,5	315	1,4	303	1,3
ILFOV	1789	100,0	395	22,1	1361	76,1	3	0,2	33	1,8

\*) by effect of implementation of Law no. 314/2001, art.1 and art. 6

\*\*\* Less than 0,01%

Table no. 8

**The number of incorporations in the Trade Register,  
by counties and sources of capital,  
in March 2007**

County	Total		out of which:					Rnking by: *	
			Private capital			State majority capital			Mixed capital (state+priva)
			out of which:			out of which:			
			PF+AF	Companies	OC	RA	Companie s		Companie s
No.	%	No.	No.	No.	No.	No.	No.		
0	1	2	3	4	5	6	7	8	9
<b>Total ROMÂNIA</b>	<b>14721</b>	<b>100,0</b>	<b>4097</b>	<b>10613</b>	<b>2</b>	<b>1</b>		<b>8</b>	<b>X</b>
ALBA	241	1,6	90	151					24
ARAD	429	2,9	157	271				1	9
ARGES	378	2,6	138	240					12
BACAU	274	1,9	70	204					19
BIHOR	602	4,1	247	355					4
BISTRITA-NASAUD	170	1,2	46	124					28
BOTOSANI	171	1,2	91	80					27
BRASOV	459	3,1	121	338					8
BRAILA	143	1,0	37	105				1	36
BUZAU	235	1,6	71	164					25
CARAS-SEVERIN	155	1,1	42	112		1			33
CALARASI	138	0,9	46	92					38
CLUJ	862	5,9	277	585					2
CONSTANTA	474	3,2	83	391					7
COVASNA	131	0,9	54	76	1				39
DAMBOVITA	246	1,7	77	169					23
DOLJ	409	2,8	135	273				1	10
GALATI	321	2,2	85	236					15
GIURGIU	154	1,0	44	110					34
GORJ	168	1,1	60	108					29
HARGHITA	271	1,8	134	137					20
HUNEDOARA	268	1,8	86	182					21
IALOMITA	116	0,8	36	80					40
IASI	602	4,1	170	432					5
MARAMURES	292	2,0	100	191	1				17
MEHEDINTI	113	0,8	38	75					41
MURES	369	2,5	105	264					13
NEAMT	268	1,8	97	171					22
OLT	142	1,0	37	105					37
PRAHOVA	485	3,3	166	319					6
SALAJ	165	1,1	64	101					30
SATU MARE	304	2,1	129	175					16
SIBIU	292	2,0	77	215					18
SUCEAVA	356	2,4	155	201					14
TELEORMAN	150	1,0	73	77					35
TIMIS	613	4,2	142	471					3
TULCEA	113	0,8	48	65					42
VASLUI	159	1,1	61	98					32
VALCEA	200	1,4	90	110					26
VRANCEA	160	1,1	46	114					31
MUN. BUCURESTI	2728	18,5	230	2495				3	1
ILFOV	395	2,7	42	351				2	11

\*) The total number of incorporations (col 1)

\*\*\* Less than 0,01%

Table no.9

**The number of incorporations in the Trade Register,  
by counties and category  
in March 2007**

County	Total		out of which:						
			PF+AF	companies: 10621				RA	OC
	SNC	SCS		SRL	SA				
	No.	%	No.	No.	No.	No.	No.	No.	
0	1	2	3	4	5	6	7	8	9
<b>Total ROMÂNIA</b>	<b>14721</b>	<b>100,0</b>	<b>4097</b>	<b>2</b>		<b>10548</b>	<b>71</b>	<b>1</b>	<b>2</b>
ALBA	241	1,6	90			150	1		
ARAD	429	2,9	157			269	3		
ARGES	378	2,6	138			238	2		
BACAU	274	1,9	70			203	1		
BIHOR	602	4,1	247	1		353	1		
BISTRITA-NASAUD	170	1,2	46			124			
BOTOSANI	171	1,2	91			80			
BRASOV	459	3,1	121			335	3		
BRAILA	143	1,0	37			105	1		
BUZAU	235	1,6	71			163	1		
CARAS-SEVERIN	155	1,1	42			112		1	
CALARASI	138	0,9	46			91	1		
CLUJ	862	5,9	277	1		580	4		
CONSTANTA	474	3,2	83			390	1		
COVASNA	131	0,9	54			76			1
DAMBOVITA	246	1,7	77			168	1		
DOLJ	409	2,8	135			271	3		
GALATI	321	2,2	85			235	1		
GIURGIU	154	1,0	44			109	1		
GORJ	168	1,1	60			108			
HARGHITA	271	1,8	134			137			
HUNEDOARA	268	1,8	86			180	2		
IALOMITA	116	0,8	36			80			
IASI	602	4,1	170			427	5		
MARAMURES	292	2,0	100			189	2		1
MEHEDINTI	113	0,8	38			75			
MURES	369	2,5	105			263	1		
NEAMT	268	1,8	97			170	1		
OLT	142	1,0	37			104	1		
PRAHOVA	485	3,3	166			318	1		
SALAJ	165	1,1	64			100	1		
SATU MARE	304	2,1	129			175			
SIBIU	292	2,0	77			215			
SUCEAVA	356	2,4	155			201			
TELEORMAN	150	1,0	73			76	1		
TIMIS	613	4,2	142			469	2		
TULCEA	113	0,8	48			65			
VASLUI	159	1,1	61			98			
VALCEA	200	1,4	90			109	1		
VRANCEA	160	1,1	46			114			
MUN. BUCURESTI	2728	18,5	230			2475	23		
ILFOV	395	2,7	42			348	5		

Table no. 10

**The number of incorporations in the Trade Register, by field of activity\*  
and categories in March 2007**

CAEN segment	Field of activity	Total		out of which:						
				PF+AF	companies: 10621				RA	OC
		SNC	SCS		SRL	SA				
		No.	%	No.	No.	No.	No.	No.	No.	No.
0	1	2	3	4	5	6	7	8	9	10
	<b>Total ROMÂNIA</b>	<b>14721</b>	<b>100,0</b>	<b>4097</b>			<b>10548</b>	<b>71</b>	<b>1</b>	<b>2</b>
1	Agriculture, hunting and related service activities	541	3,7	282			256	3		
2	Forestry, logging and related service activities	88	0,6	22			65		1	
5	Fishing, fish farming and related service activities	47	0,3	21			25	1		
10	Mining of coal and lignite; extraction of peat									
11	Extraction of crude petroleum and natural gas; service activities incidental to oil and gas extraction, excluding surveying	2	0,0	1			1			
12	Mining of uranium and thorium ores									
13	Mining of metal ores									
14	Other mining and quarrying	20	0,1				20			
15	Manufacture of food products and beverages	149	1,0	74			75			
16	Manufacture of tobacco products	3	0,0				3			
17	Manufacture of textiles	34	0,2	13			21			
18	Manufacture of wearing apparel; dressing and dyeing of fur	62	0,4	15			46	1		
19	Tanning and dressing of leather; manufacture of luggage, handbags, saddlery, harness and footwear	25	0,2	4			21			
20	Manufacture of wood and of products of wood and cork, except furniture; manufacture of articles of straw and plaiting materials	150	1,0	75			75			
21	Manufacture of pulp, paper and paper products	15	0,1				15			
22	Publishing, printing and reproduction of recorded media	90	0,6	6			83	1		
23	Manufacture of coke, refined petroleum products and nuclear fuel	2	0,0				2			
24	Manufacture of chemicals and chemical products	7	0,0				7			
25	Manufacture of rubber and plastic products	67	0,5	2	1		64			
26	Manufacture of other non-metallic mineral products	91	0,6	28			63			
27	Manufacture of basic metals	7	0,0	1			6			
28	Manufacture of fabricated metal products, except machinery and equipment	189	1,3	77			111	1		
29	Manufacture of machinery and equipment n.e.c.	15	0,1	1			14			
30	Manufacture of office machinery and computers	1	0,0				1			
31	Manufacture of electrical machinery and apparatus n.e.c.	12	0,1				12			
32	Manufacture of radio, television and communication equipment and apparatus	4	0,0				4			
33	Manufacture of medical, precision and optical instruments, watches and clocks	25	0,2	7			17	1		
34	Manufacture of motor vehicles, trailers and semi- trailers	4	0,0				3	1		
35	Manufacture of other transport equipment	7	0,0	1			4	2		
36	Manufacture of furniture; manufacturing n.e.c.	136	0,9	47			89			
37	Recycling	49	0,3	5			44			
40	Electricity, gas, steam and hot water supply	27	0,2				21	6		
41	Collection, purification and distribution of water	3	0,0	1			1	1		
45	Construction	2542	17,3	576			1958	8		



Table no. 11

**Number of companies registered and the amount  
of subscribed capital, by county in March 2007**

County	Total registered companies		Subscribed capital		Average subscribed capital on company
	No.	%	thousant RONI	%	thousant RONI
0	1	2	3	4	5
<b>Total ROMÂNIA</b>	<b>10621</b>	<b>100,0</b>	<b>367265,9</b>	<b>100,0</b>	<b>34,7</b>
ALBA	151	1,4	150,2	0,0	1,0
ARAD	272	2,6	7443,5	2,0	27,6
ARGES	240	2,3	790,2	0,2	3,3
BACAU	204	1,9	362,8	0,1	1,8
BIHOR	355	3,3	761,8	0,2	2,1
BISTRITA-NASAUD	124	1,2	48,6	0,0	0,4
BOTOSANI	80	0,8	36,7	***	0,5
BRASOV	338	3,2	3350,5	0,9	10,0
BRAILA	106	1,0	8372,1	2,3	79,0
BUZAU	164	1,5	594,7	0,2	3,6
CARAS-SEVERIN	112	1,1	196,1	0,1	1,8
CALARASI	92	0,9	115,9	0,0	1,3
CLUJ	585	5,5	7902,7	2,2	13,6
CONSTANTA	391	3,7	1016,2	0,3	2,6
COVASNA	76	0,7	80,4	0,0	1,1
DAMBOVITA	169	1,6	1196,4	0,3	7,1
DOLJ	274	2,6	40282,4	11,0	147,6
GALATI	236	2,2	193,5	0,1	0,8
GIURGIU	110	1,0	81,5	0,0	0,7
GORJ	108	1,0	64,6	0,0	0,6
HARGHITA	137	1,3	272,8	0,1	2,0
HUNEDOARA	182	1,7	521,3	0,1	2,9
IALOMITA	80	0,8	109,6	0,0	1,4
IASI	432	4,1	797,4	0,2	1,9
MARAMURES	191	1,8	223,5	0,1	1,2
MEHEDINTI	75	0,7	35,8	***	0,5
MURES	264	2,5	499,5	0,1	1,9
NEAMT	171	1,6	273,4	0,1	1,6
OLT	105	1,0	195,9	0,1	1,9
PRAHOVA	319	3,0	4921,9	1,3	15,5
SALAJ	101	1,0	39,6	0,0	0,4
SATU MARE	175	1,6	79,5	0,0	0,5
SIBIU	215	2,0	662,5	0,2	3,1
SUCEAVA	201	1,9	233,3	0,1	1,2
TELEORMAN	77	0,7	295,8	0,1	3,8
TIMIS	471	4,4	1327,6	0,4	2,8
TULCEA	65	0,6	63,7	0,0	1,0
VASLUI	98	0,9	42,7	0,0	0,4
VALCEA	110	1,0	4299,6	1,2	39,1
VRANCEA	114	1,1	97,5	0,0	0,9
MUN. BUCURESTI	2498	23,5	170781,3	46,5	68,7
ILFOV	353	3,3	108451,2	29,5	307,2

Table no. 12

**Number of registered companies and the amount  
of subscribed capital by category,  
in March 2007**

Company type	Total registered companies		Subscribed capital		Average subscribed capital on company
	No.	%	thousand RONI	%	thousand RONI
0	1	2	3	4	5
<b>Total ROMÂNIA</b>	<b>10621</b>	<b>100,0</b>	<b>367265,9</b>	<b>100,0</b>	<b>34,7</b>
<b>SNC</b>	2	0,0	0,4	***	0,2
<b>SCS</b>					
<b>SA</b>	71	0,7	200990,6	54,7	4568,0
<b>SRL</b>	10548	99,3	166274,9	45,3	15,8
<b>SCA</b>					

*Note: The average does not include filials because according to the Law no.31/1990 they are not juridical persons*

\*\*\* Less than 0,01%

Diagram no.5

