



MINISTRY OF JUSTICE

THE NATIONAL TRADE REGISTER OFFICE

București, Bd. Unirii nr. 74, Bl. J3b, tronson II+III, sector 3; Telefon: +40 21 316.08.04, 316.08.10; Fax: +40 21 316.08.03 Cod poștal: 030837  
Website: [www.onrc.ro](http://www.onrc.ro); E-mail: [onrc@onrc.ro](mailto:onrc@onrc.ro); Cod de identificare Fiscală: 14942091

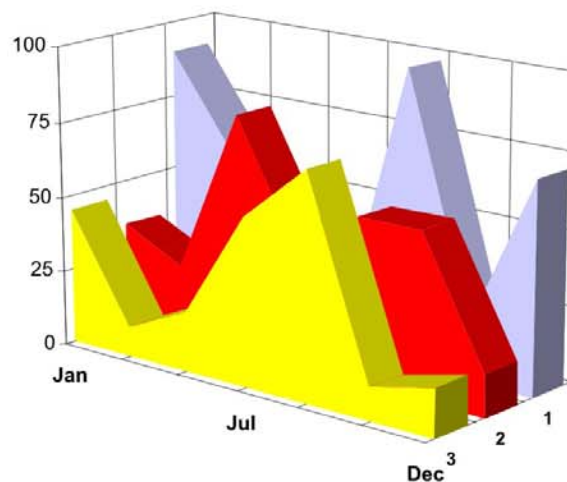
# PROCEEDINGS IN THE CENTRAL TRADE REGISTER

## STATISTICAL SYNTHESIS

OF

**RECORDS IN THE CENTRAL TRADE REGISTER**

**- the 28<sup>th</sup> of February 2007 - provisional data -**



- ISSUE No. 183 -

**MINISTRY OF JUSTICE  
THE NATIONAL TRADE REGISTER OFFICE**

---

- Operations of incorporation of companies, changes in statutory documents and strike-off of companies are based on Law No.26/1990 reissued, Law No.31/1990, reissued, OUG No.76/2001, reissued and Methodology Norms No. P/608/1998.
  
- This paper presents the trend in operations registered in The Trade Register Office attached to the law court of Bucharest and in the Trade Register Offices attached to the law court in each county of Romania.
  
- Information recorded in the Central Trade Register concern operations compulsory by law to be registered in the trade registers within the 42 trade register offices attached to the law courts.

*• No part of the content of this publication, in original or in any modified format, September be reproduced, stored in a retrieval system, or transmitted, in any form or by any means, without the prior permission in writing of The Ministry of Justice – The National Trade Register Office.*

*• The content of this publication September be referred to in articles, studies, books, as supporting or explanatory data under the condition only, the source of the information to be clearly and precisely specified.*

<b>1</b>	<b>Explanatory Note</b>	<b>1</b>
<b>2.1</b>	<b>Data for December 1990 – February 2007</b>	<b>3</b>
	Table no.1 – Operations registered in the Trade Register, by categories during the period of December 1990 – February 2007, in total by country and counties, rate of categories of operations in total operations country	3
	Table no.1.a – Operations registered in the Trade Register, by categories during the period of December 1990 – February 2007, in total by country and counties, counties’ rate in total country	4
	Table no. 3 – Number and structure of incorporations in the Trade Register, by years, during the period of December 1990- February 2007	5
	Table no.4 – The number of incorporations in the Trade Register, by counties and sources of capital, in the period December 1990 - February 2007	6
	Table no. 5 – The number of incorporations in the Trade Register, by counties and categories, during the period of December 1990 – February 2007	7
	Table no. 6 – The number of incorporations in the Trade Register, by field of activity and categories, during the period of December 1990 - February 2007	8
	<b>2.2 Data for February 2007</b>	<b>10</b>
	Table no. 7 – Operations carried on with the Trade Registers, by counties and categories, in February 2007	10
	Table no. 8 – The number of incorporations in the Trade Register, by counties and sources of capital, in February 2007	11
	Table no. 9 – The number of incorporations in the Trade Register, by counties and category in February 2007	12
	Table no. 10 –The number of incorporations in the Trade Register, by field of activity and categories in February 2007	13
	Table no. 11 – Number of companies registered and the amount of subscribed capital, by county in February 2007	15
	Table no. 12– Number of registered companies and the amount of subscribed capital by category, in February 2007	16
	Diagram no. 5 – Average subscribed capital on company in February 2007	16

The Trade Register Office is set-up by Law No. 26/1990, reissued and modified by OUG No. 129/2002, became an active institution since December 1990 and is structured in two levels:

- the national level, represented by the National Trade Register Office organised under the Ministry of Justice
- the local level, represented by the 42 trade register offices attached to the law courts and co-ordinated by the National Trade Register Office

The categories of businessmen compulsory to register in the trade register are:

- natural persons tradesmen and family associations doing usually commercial acts, commercial companies, national companies, companies under state supervision, and co-operative organisations
- subsidiaries registered as commercial companies and legal persons following the legal proceedings of set-up, activity and incorporation according to the type of the legally set-up company.

#### **Usual Terms:**

- incorporation – represents the registration of the company in the trade registry awarding the quality of legal person.

- other statutory documents – represent the official registration of the changes occurred in a company's life, such as: changes in headquarters' address, increase or decrease of the issued capital, merger, liquidation, strike-off, etc.

- strike-off – represents the removal of a company from the trade registry, due to dissolution and liquidation, being also the very moment the company loses its quality of legal person. Data also include the companies under the provisions of Law No. 314/2001.

- change of certificate – represents the obligation of companies set-up before OGU No. 76/2001 republished came in force, to request the incorporation certificate and fiscal registration certificate to be replaced with the new registration certificate containing the given unique registration code.

The ratio of these changes is being calculated as a proportion between the effective number of changes and the number of active companies due to operate the change.

- active company from the legal point of view – a company registered in the trade register and which is not affected by any of the situations leading to the temporary or permanently loss of this status (e.g. dissolution, liquidation, strike-off)

- operations represent all the records in the trade registry including incorporations, other statutory documents and strike-off of companies, irrespective of the object of activity, company's type and origin of the subscribed capital (local or foreign investment).

• **Terms used in tables and charts**

➤ **Number of companies:** represents, depending on the specific table, the number of companies incorporated in the related period, the number of companies being struck-off from the trade registry.

➤ **Amount of the subscribed capital:**

- **total, in local currency:** the amount of the subscribed capital resulted from totalising the amount subscribed (in cash and in kind) in local currency (ROL)

➤ **Regional development:**

*North-East:* Suceava, Botoşani, Neamţ, Iaşi, Bacău, Vaslui.

*South-East:* Vrancea, Galaţi, Buzău, Brăila, Tulcea, Constanţa.

*South-Muntenia:* Argeş, Dâmboviţa, Prahova, Teleorman, Giurgiu, Călăraşi, Ialomiţa.

*South-West Oltenia:* Gorj, Vâlcea, Dolj, Mehedinţi, Olt.

*West:* Arad, Caraş-Severin, Hunedoara, Timiş.

*North-West:* Bihor, Bistriţa, Cluj, Satu Mare, Sălaj, Maramureş.

*Center:* Alba, Braşov, Covasna, Harghita, Mureş, Sibiu.

*Bucharest-Ilfov:* Bucureşti, Ilfov.

CAEN code – The Classification of Activities in the National Economy was approved by HG No. 656/1997, modified by Order No 601 of the President of National Institute of Statistics being compatible with the international classification used in statistic reports and official documents. Activities are ranked upon homogeneity principle by sections, divisions, groups and classes.

Common abbreviations

- **PF** - Natural Persons Tradesman
- **AF** - Family association
- **SNC** - General Partnership
- **SCS** - Limited Partnership
- **SA** - Joint stock company
- **SRL** - Limited liability company
- **RA** - Company Under State Supervision
- **OC** - Co-operative organisation

Source:

The integrated IT system of the trade registry is designed by The National Trade Registry Office according to the provisions of the related legislation in force. The source of information is the computerised system of the trade registers handled by the Trade Register Offices attached to the law courts.

Table no. 1

**Operations registered in the Trade Register, by categories  
during the period of December 1990 - February 2007 in total by country and counties,  
- rate of categories of operations in total operations/country -**

Counties	Total of registered operations		out of which :							
			Registered companies		Changes in statutory documents		out of which : of liquidation, dissolution		Strike off companies	
	No.	%	No.	%	No.	%	No.	%	No.	%
0	1	2	3	4	5	6	7	8	11	12
<b>Total ROMÂNIA</b>	<b>7917449</b>	<b>100,0</b>	<b>1580222</b>	<b>100,0</b>	<b>5857230</b>	<b>100,0</b>	<b>9911</b>	<b>100,0</b>	<b>479997</b>	<b>100,0</b>
ALBA	108537	1,4	24657	1,6	79464	1,4	371	3,7	4416	0,9
ARAD	175889	2,2	38809	2,5	127499	2,2	369	3,7	9581	2,0
ARGES	189291	2,4	40741	2,6	140026	2,4	197	2,0	8524	1,8
BACAU	184646	2,3	39889	2,5	133308	2,3	1003	10,1	11449	2,4
BIHOR	243573	3,1	47318	3,0	182467	3,1	303	3,1	13788	2,9
BISTRITA-NASAUD	96861	1,2	19265	1,2	71754	1,2	72	0,7	5842	1,2
BOTOSANI	73308	0,9	19513	1,2	49045	0,8	66	0,7	4750	1,0
BRASOV	261384	3,3	49146	3,1	201650	3,4	149	1,5	10588	2,2
BRAILA	100146	1,3	21930	1,4	74984	1,3	61	0,6	3232	0,7
BUZAU	147638	1,9	29129	1,8	108522	1,9	146	1,5	9987	2,1
CARAS-SEVERIN	100513	1,3	19580	1,2	72975	1,2	41	0,4	7958	1,7
CALARASI	69684	0,9	15962	1,0	48939	0,8	79	0,8	4783	1,0
CLUJ	351535	4,4	72236	4,6	267133	4,6	197	2,0	12166	2,5
CONSTANTA	342104	4,3	66395	4,2	251280	4,3	926	9,3	24429	5,1
COVASNA	71627	0,9	13492	0,9	53981	0,9	18	0,2	4154	0,9
DAMBOVITA	121018	1,5	29623	1,9	78580	1,3	98	1,0	12815	2,7
DOLJ	204711	2,6	41910	2,7	150781	2,6	215	2,2	12020	2,5
GALATI	219313	2,8	37498	2,4	168293	2,9	125	1,3	13522	2,8
GIURGIU	54821	0,7	12765	0,8	37195	0,6	47	0,5	4861	1,0
GORJ	106259	1,3	18957	1,2	81558	1,4	48	0,5	5744	1,2
HARGHITA	114126	1,4	23943	1,5	86198	1,5	51	0,5	3985	0,8
HUNEDOARA	157331	2,0	32643	2,1	111970	1,9	126	1,3	12718	2,6
IALOMITA	74935	0,9	14858	0,9	54894	0,9	78	0,8	5183	1,1
IASI	267353	3,4	48556	3,1	208073	3,6	597	6,0	10724	2,2
MARAMURES	163369	2,1	40742	2,6	112629	1,9	159	1,6	9998	2,1
MEHEDINTI	82721	1,0	17993	1,1	57007	1,0	55	0,6	7721	1,6
MURES	195458	2,5	39826	2,5	143710	2,5	83	0,8	11922	2,5
NEAMT	166319	2,1	35026	2,2	117890	2,0	304	3,1	13403	2,8
OLT	103108	1,3	22551	1,4	71875	1,2	21	0,2	8682	1,8
PRAHOVA	275244	3,5	52076	3,3	209085	3,6	274	2,8	14083	2,9
SALAJ	66292	0,8	15205	1,0	46681	0,8	29	0,3	4406	0,9
SATU MARE	127641	1,6	26568	1,7	91693	1,6	26	0,3	9380	2,0
SIBIU	171662	2,2	30504	1,9	134121	2,3	31	0,3	7037	1,5
SUCEAVA	190248	2,4	40359	2,6	134533	2,3	29	0,3	15356	3,2
TELEORMAN	87037	1,1	17926	1,1	65051	1,1	49	0,5	4060	0,8
TIMIS	298293	3,8	54997	3,5	228738	3,9	271	2,7	14558	3,0
TULCEA	80603	1,0	16405	1,0	59264	1,0	149	1,5	4934	1,0
VASLUI	91051	1,2	20339	1,3	62560	1,1	197	2,0	8152	1,7
VALCEA	125068	1,6	26276	1,7	90897	1,6	138	1,4	7895	1,6
VRANCEA	99499	1,3	19641	1,2	75958	1,3	51	0,5	3900	0,8
MUN. BUCURESTI	1653543	20,9	300019	19,0	1242321	21,2	2641	26,6	111203	23,2
ILFOV	103690	1,3	24954	1,6	72648	1,2	21	0,2	6088	1,3

Table no. 2

**Operations registered in the Trade Register, by categories  
during the period of December 1990 - February 2007, in total by country and counties  
- rate of categories of operations in total operations/country -**

Counties	Total of registered operations		out of which :							
			Registered companies		Changes in statutory documents		out of which : of liquidation, dissolution		Strike off companies	
	No.	%	No.	%	No.	%	No.	%	No.	%
0	1	2	3	4	5	6	7	8	11	12
<b>Total ROMÂNIA</b>	<b>7917449</b>	<b>100,0</b>	<b>1580222</b>	<b>20,0</b>	<b>5857230</b>	<b>74,0</b>	<b>9911</b>	<b>0,1</b>	<b>479997</b>	<b>6,1</b>
ALBA	108537	100,0	24657	22,7	79464	73,2	371	0,3	4416	4,1
ARAD	175889	100,0	38809	22,1	127499	72,5	369	0,2	9581	5,4
ARGES	189291	100,0	40741	21,5	140026	74,0	197	0,1	8524	4,5
BACAU	184646	100,0	39889	21,6	133308	72,2	1003	0,5	11449	6,2
BIHOR	243573	100,0	47318	19,4	182467	74,9	303	0,1	13788	5,7
BISTRITA-NASAUD	96861	100,0	19265	19,9	71754	74,1	72	0,1	5842	6,0
BOTOSANI	73308	100,0	19513	26,6	49045	66,9	66	0,1	4750	6,5
BRASOV	261384	100,0	49146	18,8	201650	77,1	149	0,1	10588	4,1
BRAILA	100146	100,0	21930	21,9	74984	74,9	61	0,1	3232	3,2
BUZAU	147638	100,0	29129	19,7	108522	73,5	146	0,1	9987	6,8
CARAS-SEVERIN	100513	100,0	19580	19,5	72975	72,6	41	0,0	7958	7,9
CALARASI	69684	100,0	15962	22,9	48939	70,2	79	0,1	4783	6,9
CLUJ	351535	100,0	72236	20,5	267133	76,0	197	0,1	12166	3,5
CONSTANTA	342104	100,0	66395	19,4	251280	73,5	926	0,3	24429	7,1
COVASNA	71627	100,0	13492	18,8	53981	75,4	18	0,0	4154	5,8
DAMBOVITA	121018	100,0	29623	24,5	78580	64,9	98	0,1	12815	10,6
DOLJ	204711	100,0	41910	20,5	150781	73,7	215	0,1	12020	5,9
GALATI	219313	100,0	37498	17,1	168293	76,7	125	0,1	13522	6,2
GIURGIU	54821	100,0	12765	23,3	37195	67,8	47	0,1	4861	8,9
GORJ	106259	100,0	18957	17,8	81558	76,8	48	0,0	5744	5,4
HARGHITA	114126	100,0	23943	21,0	86198	75,5	51	0,0	3985	3,5
HUNEDOARA	157331	100,0	32643	20,7	111970	71,2	126	0,1	12718	8,1
IALOMITA	74935	100,0	14858	19,8	54894	73,3	78	0,1	5183	6,9
IASI	267353	100,0	48556	18,2	208073	77,8	597	0,2	10724	4,0
MARAMURES	163369	100,0	40742	24,9	112629	68,9	159	0,1	9998	6,1
MEHEDINTI	82721	100,0	17993	21,8	57007	68,9	55	0,1	7721	9,3
MURES	195458	100,0	39826	20,4	143710	73,5	83	0,0	11922	6,1
NEAMT	166319	100,0	35026	21,1	117890	70,9	304	0,2	13403	8,1
OLT	103108	100,0	22551	21,9	71875	69,7	21	0,0	8682	8,4
PRAHOVA	275244	100,0	52076	18,9	209085	76,0	274	0,1	14083	5,1
SALAJ	66292	100,0	15205	22,9	46681	70,4	29	0,0	4406	6,6
SATU MARE	127641	100,0	26568	20,8	91693	71,8	26	0,0	9380	7,3
SIBIU	171662	100,0	30504	17,8	134121	78,1	31	0,0	7037	4,1
SUCEAVA	190248	100,0	40359	21,2	134533	70,7	29	0,0	15356	8,1
TELEORMAN	87037	100,0	17926	20,6	65051	74,7	49	0,1	4060	4,7
TIMIS	298293	100,0	54997	18,4	228738	76,7	271	0,1	14558	4,9
TULCEA	80603	100,0	16405	20,4	59264	73,5	149	0,2	4934	6,1
VASLUI	91051	100,0	20339	22,3	62560	68,7	197	0,2	8152	9,0
VALCEA	125068	100,0	26276	21,0	90897	72,7	138	0,1	7895	6,3
VRANCEA	99499	100,0	19641	19,7	75958	76,3	51	0,1	3900	3,9
MUN. BUCURESTI	1653543	100,0	300019	18,1	1242321	75,1	2641	0,2	111203	6,7
ILFOV	103690	100,0	24954	24,1	72648	70,1	21	0,0	6088	5,9

Table no.3

Number and structure of incorporations in the Trade Register, by years,  
February 2007

Period (year, month)	Registered companies	Percentage	
	No.	%	%
0	1	2	3
<b>Total, 31 February 2006, out of which</b>	<b>1580222</b>	<b>100,00</b>	
Year 1990	81	0,01	
Year 1991	95840	6,06	
Year 1992	137456	8,70	
Year 1993	117078	7,41	
Year 1994	137445	8,70	
Year 1995	65479	4,14	
Year 1996	62089	3,93	
Year 1997	55663	3,52	
Year 1998	63878	4,04	
Year 1999	57197	3,62	
Year 2000	57291	3,63	
Year 2001	61265	3,88	
Year 2002	84780	5,37	
Year 2003	123582	7,82	
Year 2004	144284	9,13	
Year 2005	157375	9,96	
Year 2006	135211	8,56	
<b>Year 2007 (I - XII) out of which :</b>	<b>24228</b>		<b>100,0</b>
January	10979		45,3
February	13249		54,7

Note: Column 2 reveals the annual structure of incorporations; column 3 reveals the structure by months during the current year.

\*\*\* Less than 0,01%  
Diagram no.1

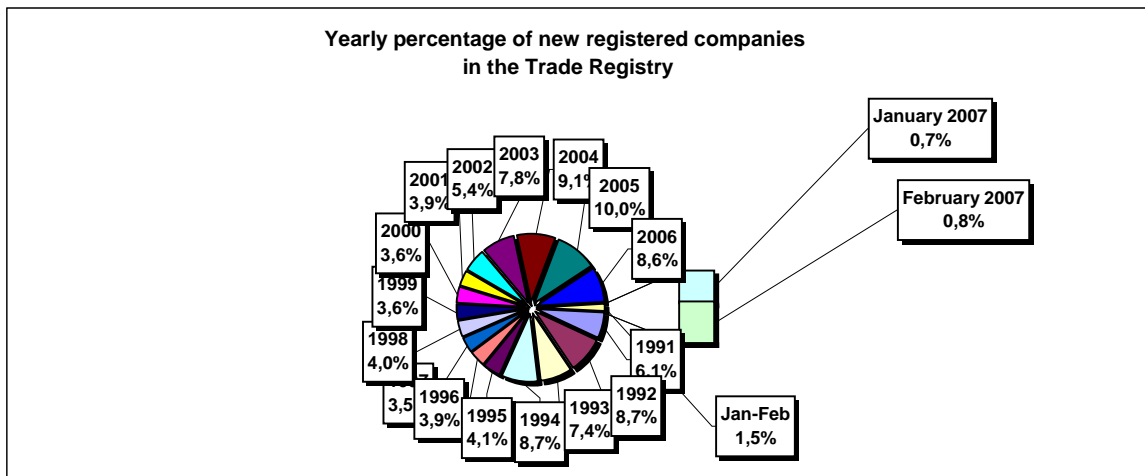


Table no. 4

**The number of incorporations in the Trade Register, by counties and sources of capital, in the period December 1990 - February 2007**

Counties	Total		out of which:					Ranking by: *	
			Private capital			State majority capital			Mixed capital (state+private)
			out of which:			out of which:			
			PF+AF	Companies	OC	RA	Companies		Companies
No.	%	No.	No.	No.	No.	No.	No.		
0	1	2	3	4	5	6	7	8	9
<b>Total ROMÂNIA</b>	<b>1580222</b>	<b>100,0</b>	<b>404978</b>	<b>1157574</b>	<b>5394</b>	<b>1338</b>	<b>2362</b>	<b>8576</b>	<b>X</b>
ALBA	24657	1,6	8493	15768	141	38	47	170	25
ARAD	38810	2,5	14783	23471	157	26	40	333	15
ARGES	40741	2,6	13136	27227	168	29	29	152	11
BACAU	39889	2,5	13261	26170	158	35	42	223	13
BIHOR	47318	3,0	10674	36091	146	37	62	308	8
BISTRITA-NASAUD	19265	1,2	6866	12144	98	19	29	109	33
BOTOSANI	19513	1,2	8895	10184	122	21	172	119	32
BRASOV	49146	3,1	10094	38637	114	44	87	170	6
BRAILA	21930	1,4	5486	16112	96	28	43	165	28
BUZAU	29129	1,8	8483	20305	142	26	42	131	21
CARAS-SEVERIN	19580	1,2	6769	12473	102	34	65	137	31
CALARASI	15962	1,0	4687	10999	86	18	77	95	38
CLUJ	72236	4,6	18088	53644	150	52	40	262	2
CONSTANTA	66395	4,2	12681	52870	203	51	49	541	3
COVASNA	13492	0,9	4547	8713	67	24	32	109	41
DAMBOVITA	29623	1,9	13557	15675	134	29	75	153	20
DOLJ	41910	2,7	8386	33063	162	40	57	202	9
GALATI	37498	2,4	7381	29758	135	30	51	143	16
GIURGIU	12765	0,8	3036	9408	80	22	109	110	42
GORJ	18957	1,2	4454	14086	184	50	83	100	34
HARGHITA	23943	1,5	9416	14146	86	23	43	229	26
HUNEDOARA	32643	2,1	8588	23562	81	38	92	282	18
IALOMITA	14858	0,9	5695	8937	74	15	46	91	40
IASI	48556	3,1	13257	34687	164	34	70	344	7
MARAMURES	40742	2,6	16500	23921	122	37	39	123	10
MEHEDINTI	17993	1,1	5714	12053	82	19	27	98	35
MURES	39826	2,5	14696	24743	156	30	34	167	14
NEAMT	35026	2,2	12910	21731	161	29	30	165	17
OLT	22551	1,4	8921	13256	161	26	64	123	27
PRAHOVA	52076	3,3	15915	35594	177	50	69	271	5
SALAJ	15205	1,0	5896	9092	107	19	28	63	39
SATU MARE	26568	1,7	8629	17656	88	19	42	134	22
SIBIU	30504	1,9	7371	22716	119	32	108	158	19
SUCEAVA	40359	2,6	19288	20555	202	30	64	220	12
TELEORMAN	17926	1,1	6171	11356	152	21	44	182	36
TIMIS	54997	3,5	8690	45713	140	38	68	348	4
TULCEA	16405	1,0	5630	10437	66	18	42	212	37
VASLUI	20339	1,3	9860	10178	109	16	41	135	29
VALCEA	26276	1,7	10344	15574	168	40	37	113	23
VRANCEA	19641	1,2	5977	13403	104	16	27	114	30
MUN. BUCURESTI	300018	19,0	18527	280025	138	115	103	1110	1
ILFOV	24954	1,6	3226	21441	92	20	13	162	24

\*) The total number of incorporations (col 1)

\*\*\* Less than 0,01%

Table no. 5

**The number of incorporations in the Trade Register,  
by counties and categories, during the period of  
December 1990 - February 2007**

County	Total		out of which:						
			PF+AF	companies: 1168512				RA	OC
	SNC	SCS		SRL	SA				
	No.	%	No.	No.	No.	No.	No.	No.	
0	1	2	3	4	5	6	7	8	9
<b>Total ROMÂNIA</b>	<b>1580222</b>	<b>100,0</b>	<b>404978</b>	<b>32650</b>	<b>1564</b>	<b>1102420</b>	<b>31872</b>	<b>1338</b>	<b>5394</b>
ALBA	24657	1,6	8493	890	11	14536	548	38	141
ARAD	38809	2,5	14783	53	11	23110	668	26	157
ARGES	40741	2,6	13136	107	14	26477	810	29	168
BACAU	39889	2,5	13261	1299	4	24410	721	35	158
BIHOR	47318	3,0	10674	125	47	35404	885	37	146
BISTRITA-NASAUD	19265	1,2	6866	146	21	11704	411	19	98
BOTOSANI	19513	1,2	8895	468	1	9557	449	21	122
BRASOV	49146	3,1	10094	239	20	37799	836	44	114
BRAILA	21930	1,4	5486	376	12	15417	515	28	96
BUZAU	29129	1,8	8483	3747	46	16123	562	26	142
CARAS-SEVERIN	19580	1,2	6769	117	8	12088	462	34	102
CALARASI	15962	1,0	4687	609	3	10212	347	18	86
CLUJ	72236	4,6	18088	2111	18	50577	1240	52	150
CONSTANTA	66395	4,2	12681	311	23	51667	1459	51	203
COVASNA	13492	0,9	4547	148	4	8406	296	24	67
DAMBOVITA	29623	1,9	13557	60	8	15350	485	29	134
DOLJ	41910	2,7	8386	1560	8	30894	860	40	162
GALATI	37498	2,4	7381	1574	6	27542	830	30	135
GIURGIU	12765	0,8	3036	35	8	9264	320	22	80
GORJ	18957	1,2	4454	29	1	13755	484	50	184
HARGHITA	23943	1,5	9416	62	6	13867	483	23	86
HUNEDOARA	32643	2,1	8588	1166	98	22010	662	38	81
IALOMITA	14858	0,9	5695	266	11	8454	343	15	74
IASI	48556	3,1	13257	506	111	33495	987	34	164
MARAMURES	40742	2,6	16500	1927	23	21551	581	37	122
MEHEDINTI	17993	1,1	5714	427	3	11423	325	19	82
MURES	39826	2,5	14696	37	34	24220	653	30	156
NEAMT	35026	2,2	12910	3293	30	17941	662	29	161
OLT	22551	1,4	8921	1611	1	11348	483	26	161
PRAHOVA	52076	3,3	15915	3122	14	31920	878	50	177
SALAJ	15205	1,0	5896	600	4	8292	287	19	107
SATU MARE	26568	1,7	8629	283	5	17078	466	19	88
SIBIU	30504	1,9	7371	776	48	21515	643	32	119
SUCEAVA	40359	2,6	19288	438	8	19814	579	30	202
TELEORMAN	17926	1,1	6171	272	399	10503	408	21	152
TIMIS	54997	3,5	8690	607	27	44265	1230	38	140
TULCEA	16405	1,0	5630	1363	114	8742	472	18	66
VASLUI	20339	1,3	9860	90	12	9851	401	16	109
VALCEA	26276	1,7	10344	364	6	14873	481	40	168
VRANCEA	19641	1,2	5977	356	10	12736	442	16	104
MUN. BUCURESTI	300019	19,0	18527	1031	296	273271	6640	115	138
ILFOV	24954	1,6	3226	49	30	20959	578	20	92

Table no. 6

**The number of incorporations in the Trade Register, by field of activity\*  
during the period of December 1990 - February 2007**

CAEN segment	Field of activity	Total		out of which:						
				PF+AF	companies: 1168512				RA	OC
		SNC	SCS		SRL	SA				
		No.	%	No.	No.	No.	No.	No.	No.	
0	1	2	3	4	5	6	7	8	9	10
	<b>Total ROMÂNIA</b>	<b>1580222</b>	<b>100,0</b>	<b>404978</b>	<b>32650</b>	<b>1564</b>	<b>1102420</b>	<b>31872</b>	<b>1338</b>	<b>5394</b>
1	Agriculture, hunting and related service activities	63731	4,0	15846	2024	44	41865	3782	53	117
2	Forestry, logging and related service activities	8417	0,5	1089	152	3	6854	222	89	8
5	Fishing, fish farming and related service activities	3101	0,2	1777	17	3	1251	53		
10	Mining of coal and lignite; extraction of peat	117	0,0	2			79	32	4	
11	Extraction of crude petroleum and natural gas; service activities incidental to oil and gas extraction, excluding surveying	345	0,0	12	1		162	124	46	
12	Mining of uranium and thorium ores	133	0,0	32			95	6		
13	Mining of metal ores	534	0,0	163			308	55	8	
14	Other mining and quarrying	1637	0,1	109	9	1	1346	169	2	1
15	Manufacture of food products and beverages	73562	4,7	14530	3260	149	53512	1858	5	248
16	Manufacture of tobacco products	288	0,0	47			209	31	1	
17	Manufacture of textiles	11771	0,7	2389	556	16	8259	406		145
18	Manufacture of wearing apparel; dressing and dyeing of fur	21023	1,3	4793	875	38	14654	357	1	305
19	Tanning and dressing of leather; manufacture of luggage, handbags, saddlery, harness and footwear	5316	0,3	912	112	6	4111	123	1	51
20	Manufacture of wood and of products of wood and cork, except furniture; manufacture of articles of straw and plaiting materials	25171	1,6	8928	575	29	15090	498	9	42
21	Manufacture of pulp, paper and paper products	1802	0,1	124	21	1	1545	98		13
22	Publishing, printing and reproduction of recorded media	11895	0,8	960	317	21	10169	404	14	10
23	Manufacture of coke, refined petroleum products and nuclear fuel	259	0,0	24			199	34	2	
24	Manufacture of chemicals and chemical products	3726	0,2	120	89	1	3127	377	6	6
25	Manufacture of rubber and plastic products	6254	0,4	574	313	7	5076	259		24
26	Manufacture of other non-metallic mineral products	9241	0,6	2822	212	6	5797	385	5	14
27	Manufacture of basic metals	2441	0,2	170	39	3	2012	207	3	7
28	Manufacture of fabricated metal products, except machinery and equipment	17269	1,1	4215	361	23	11875	722	11	62
29	Manufacture of machinery and equipment n.e.c.	3830	0,2	107	44	7	3227	421	19	5
30	Manufacture of office machinery and computers	1779	0,1	16	25	4	1654	80		
31	Manufacture of electrical machinery and apparatus n.e.c.	1951	0,1	112	44	6	1639	144		6
32	Manufacture of radio, television and communication equipment and apparatus	870	0,1	60	14	4	718	73		1
33	Manufacture of medical, precision and optical instruments, watches and clocks	2636	0,2	632	17	2	1878	103		4
34	Manufacture of motor vehicles, trailers and semi-trailers	919	0,1	31	31	3	727	125		2
35	Manufacture of other transport equipment	1930	0,1	284	86	7	1356	122	73	2
36	Manufacture of furniture; manufacturing n.e.c.	15670	1,0	4447	284	16	10424	336	5	158
37	Recycling	4928	0,3	429	51	5	4269	173		1
40	Electricity, gas, steam and hot water supply	2962	0,2	837	3	1	1510	523	88	
41	Collection, purification and distribution of water	3558	0,2	1626	2		1653	204	73	
45	Construction	96694	6,1	25267	611	43	68205	2438	53	77

**Table no. 6**  
(continuing)

**The number of incorporations in the Trade Register, by field of activity\*  
and categories, during the period of December 1990 - February 2007**

CAEN segment	Field of activity	Total		out of which:						
				PF+AF	companies: 1168512				RA	OC
					SNC	SCS	SRL	SA		
0	1	No.	%	No.	No.	No.	No.	No.	No.	
	<b>Total ROMANIA</b>	<b>1580222</b>	<b>100,0</b>	<b>404978</b>	<b>32650</b>	<b>1564</b>	<b>1102420</b>	<b>31872</b>	<b>1338</b>	<b>5394</b>
50	Sale, maintenance and repair of motor vehicles and motorcycles; retail sale of automotive fuel	54792	3,5	8683	1244		43759	1024	6	42
51	Wholesale trade and commission trade, except of motor vehicles and motorcycles	204432	12,9	18159	4524	150	177987	3295	35	282
52	Retail trade, except of motor vehicles and motorcycles; repair of personal and household goods	503229	31,8	178385	11915	557	307490	2493	6	2382
55	Hotels and restaurants	60863	3,9	14426	1635	126	43721	787	73	95
60	Land transport; transport via pipelines	82278	5,2	36076	844	37	44222	1056	33	10
61	Water transport	862	0,1	162	82	8	475	64	70	1
62	Air transport	298	0,0	18			222	48	10	
63	Supporting and auxiliary transport activities; activities of travel agencies	10512	0,7	701	220	14	9030	440	96	11
64	Post and telecommunications	7346	0,5	673	11	1	6345	302	11	3
65	Financial intermediation, except insurance and pension funding	6464	0,4	145	15		2912	2357	2	1033
66	Insurance and pension funding, except compulsory social security	2050	0,1	613	1		514	921		1
67	Activities auxiliary to financial intermediation	6937	0,4	1271	7	2	5362	287		8
70	Real estate activities	23680	1,5	748	28	9	22243	628	17	7
71	Renting of machinery and equipment without operator and of personal and household goods	3506	0,2	673	116	8	2543	95	70	1
72	Computer and related activities	23889	1,5	4847	120	13	18521	383	2	3
73	Research and development	1737	0,1	246	11	2	1262	171	43	2
74	Other business activities	112213	7,1	23089	792	74	86421	1670	106	60
75	Public administration and defence; compulsory social security	362	0,0	90	5		219	26	21	1
80	Education	6801	0,4	3339	62	6	3329	65		
85	Health and social work	16405	1,0	2128	233	15	13942	83	3	1
90	Sewage and refuse disposal, sanitation and similar activities	946	0,1	100	13	2	703	108	18	
91	Activities of membership organizations n.e.c.	214	0,0	94	1		101	15		3
92	Recreational, cultural and sporting activities	16895	1,1	4537	202	14	11761	300	69	12
93	Other service activities	26772	1,7	11652	418	42	14152	305	76	126
95	Activities of households as employers of domestic staff	898	0,1	579	6	1	308	3		1
96	Extra-territorial organizations and bodies	11	0,0	11						

Table no. 7

**Operations carried on with the Trade Registers,  
by counties and categories,  
in February 2007**

County	Total of operations carried on		out of which:							
			New incorporations		Changes in statutory documents		out of which: of liquidation, dissolution		Strike off companies	
	No.	%	No.	%	No.	%	No.	%	No.	%
0	1	2	3	4	5	6	7	8	9	10
<b>Total ROMÂNIA</b>	<b>97296</b>	<b>100,0</b>	<b>13249</b>	<b>13,6</b>	<b>75315</b>	<b>77,4</b>	<b>4404</b>	<b>4,5</b>	<b>8732</b>	<b>9,0</b>
ALBA	1094	100,0	250	22,9	746	68,2	4	0,4	98	9,0
ARAD	2209	100,0	370	16,7	1719	77,8	10	0,5	120	5,4
ARGES	3276	100,0	321	9,8	2864	87,4	106	3,2	91	2,8
BACAU	1444	100,0	279	19,3	1074	74,4	224	15,5	91	6,3
BIHOR	3119	100,0	561	18,0	2475	79,4	36	1,2	83	2,7
BISTRITA-NASAUD	1055	100,0	151	14,3	868	82,3	101	9,6	36	3,4
BOTOSANI	597	100,0	124	20,8	433	72,5	1	0,2	40	6,7
BRASOV	3618	100,0	395	10,9	3091	85,4	33	0,9	132	3,6
BRAILA	1198	100,0	155	12,9	991	82,7	14	1,2	52	4,3
BUZAU	1534	100,0	250	16,3	1237	80,6	491	32,0	47	3,1
CARAS-SEVERIN	1003	100,0	150	15,0	834	83,2	17	1,7	19	1,9
CALARASI	2601	100,0	104	4,0	1528	58,7	7	0,3	969	37,3
CLUJ	10229	100,0	677	6,6	6425	62,8	57	0,6	3127	30,6
CONSTANTA	3810	100,0	479	12,6	3253	85,4	13	0,3	78	2,0
COVASNA	485	100,0	104	21,4	362	74,6	2	0,4	19	3,9
DAMBOVITA	1426	100,0	271	19,0	1102	77,3	292	20,5	53	3,7
DOLJ	1941	100,0	314	16,2	1527	78,7	17	0,9	100	5,2
GALATI	2439	100,0	335	13,7	1970	80,8	184	7,5	134	5,5
GIURGIU	366	100,0	105	28,7	250	68,3	8	2,2	11	3,0
GORJ	1007	100,0	126	12,5	841	83,5	11	1,1	40	4,0
HARGHITA	1359	100,0	245	18,0	1024	75,3	102	7,5	90	6,6
HUNEDOARA	2864	100,0	217	7,6	2109	73,6	4	0,1	538	18,8
IALOMITA	801	100,0	102	12,7	665	83,0			34	4,2
IASI	2926	100,0	422	14,4	2445	83,6	54	1,8	59	2,0
MARAMURES	3424	100,0	335	9,8	2317	67,7	146	4,3	772	22,5
MEHEDINTI	561	100,0	115	20,5	430	76,6	4	0,7	16	2,9
MURES	2628	100,0	282	10,7	2092	79,6	571	21,7	254	9,7
NEAMT	1532	100,0	259	16,9	1195	78,0	105	6,9	78	5,1
OLT	635	100,0	145	22,8	454	71,5	28	4,4	36	5,7
PRAHOVA	2974	100,0	377	12,7	2482	83,5	629	21,1	115	3,9
SALAJ	1083	100,0	145	13,4	852	78,7	45	4,2	86	7,9
SATU MARE	1532	100,0	311	20,3	1145	74,7	183	11,9	76	5,0
SIBIU	2227	100,0	312	14,0	1854	83,3	18	0,8	61	2,7
SUCEAVA	1262	100,0	348	27,6	832	65,9	271	21,5	82	6,5
TELEORMAN	582	100,0	148	25,4	410	70,4	88	15,1	24	4,1
TIMIS	2570	100,0	512	19,9	2021	78,6	12	0,5	37	1,4
TULCEA	572	100,0	104	18,2	434	75,9	184	32,2	34	5,9
VASLUI	761	100,0	127	16,7	598	78,6	1	0,1	36	4,7
VALCEA	955	100,0	194	20,3	703	73,6	6	0,6	58	6,1
VRANCEA	1274	100,0	147	11,5	1072	84,1	7	0,5	55	4,3
MUN. BUCURESTI	18845	100,0	2501	13,3	15546	82,5	315	1,7	798	4,2
ILFOV	1478	100,0	380	25,7	1045	70,7	3	0,2	53	3,6

\*) by effect of implementation of Law no. 314/2001, art.1 and art. 6

\*\*\* Less than 0,01%

Table no. 8

**The number of incorporations in the Trade Register,  
by counties and sources of capital,  
in February 2007**

County	Total		out of which:					Ranking by: *	
			Private capital			State majority capital			Mixed capital (state+private)
			out of which:			out of which:			
			PF+AF	Companies	OC	RA	Companies		Companies
No.	%	No.	No.	No.	No.	No.	No.		
0	1	2	3	4	5	6	7	8	9
<b>Total ROMANIA</b>	<b>13249</b>	<b>100,0</b>	<b>3643</b>	<b>9606</b>					X
ALBA	250	1,9	104	146					22
ARAD	370	2,8	146	224					10
ARGES	321	2,4	96	225					14
BACAU	279	2,1	66	213					19
BIHOR	561	4,2	308	253					3
BISTRITA-NASAUD	151	1,1	39	112					28
BOTOSANI	124	0,9	66	58					36
BRASOV	395	3,0	79	316					7
BRAILA	155	1,2	42	113					27
BUZAU	250	1,9	81	169					23
CARAS-SEVERIN	150	1,1	42	108					29
CALARASI	104	0,8	39	65					39
CLUJ	677	5,1	154	523					2
CONSTANTA	479	3,6	86	393					5
COVASNA	104	0,8	36	68					40
DAMBOVITA	271	2,0	96	175					20
DOLJ	314	2,4	83	231					15
GALATI	335	2,5	121	214					12
GIURGIU	105	0,8	23	82					38
GORJ	126	1,0	34	92					35
HARGHITA	245	1,8	153	92					24
HUNEDOARA	217	1,6	62	155					25
IALOMITA	102	0,8	36	66					42
IASI	422	3,2	142	280					6
MARAMURES	335	2,5	107	228					13
MEHEDINTI	115	0,9	42	73					37
MURES	282	2,1	66	216					18
NEAMT	259	2,0	92	167					21
OLT	145	1,1	47	98					32
PRAHOVA	377	2,8	121	256					9
SALAJ	145	1,1	57	88					33
SATU MARE	311	2,3	140	171					17
SIBIU	312	2,4	102	210					16
SUCEAVA	348	2,6	162	186					11
TELEORMAN	148	1,1	59	89					30
TIMIS	512	3,9	88	424					4
TULCEA	104	0,8	31	73					41
VASLUI	127	1,0	55	72					34
VALCEA	194	1,5	74	120					26
VRANCEA	147	1,1	47	100					31
MUN. BUCURESTI	2501	18,9	200	2301					1
ILFOV	380	2,9	19	361					8

\*) The total number of incorporations (col 1)

\*\*\* Less than 0,01%

Table no.9

**The number of incorporations in the Trade Register,  
by counties and category  
in February 2007**

County	Total		out of which:						
			PF+AF	companies: 9606				RA	OC
	SNC	SCS		SRL	SA				
	No.	%	No.	No.	No.	No.	No.	No.	
0	1	2	3	4	5	6	7	8	9
<b>Total ROMÂNIA</b>	<b>13249</b>	<b>100,0</b>	<b>3643</b>	<b>1</b>	<b>1</b>	<b>9535</b>	<b>69</b>		
ALBA	250	1,9	104			146			
ARAD	370	2,8	146			222	2		
ARGES	321	2,4	96			220	5		
BACAU	279	2,1	66			213			
BIHOR	561	4,2	308			253			
BISTRITA-NASAUD	151	1,1	39			112			
BOTOSANI	124	0,9	66			58			
BRASOV	395	3,0	79			314	2		
BRAILA	155	1,2	42			112	1		
BUZAU	250	1,9	81			169			
CARAS-SEVERIN	150	1,1	42			108			
CALARASI	104	0,8	39			65			
CLUJ	677	5,1	154			514	9		
CONSTANTA	479	3,6	86			389	4		
COVASNA	104	0,8	36			68			
DAMBOVITA	271	2,0	96			175			
DOLJ	314	2,4	83			230	1		
GALATI	335	2,5	121			210	4		
GIURGIU	105	0,8	23			82			
GORJ	126	1,0	34			92			
HARGHITA	245	1,8	153			92			
HUNEDOARA	217	1,6	62			155			
IALOMITA	102	0,8	36			66			
IASI	422	3,2	142			278	2		
MARAMURES	335	2,5	107	1		227			
MEHEDINTI	115	0,9	42			73			
MURES	282	2,1	66			216			
NEAMT	259	2,0	92			165	2		
OLT	145	1,1	47			98			
PRAHOVA	377	2,8	121			255	1		
SALAJ	145	1,1	57			88			
SATU MARE	311	2,3	140			171			
SIBIU	312	2,4	102			208	2		
SUCEAVA	348	2,6	162			185	1		
TELEORMAN	148	1,1	59			88	1		
TIMIS	512	3,9	88			423	1		
TULCEA	104	0,8	31			72	1		
VASLUI	127	1,0	55			72			
VALCEA	194	1,5	74			116	4		
VRANCEA	147	1,1	47			100			
MUN. BUCURESTI	2501	18,9	200		1	2276	24		
ILFOV	380	2,9	19			359	2		

Table no. 10

The number of incorporations in the Trade Register, by field of activity\*  
and categories in February 2007

CAEN segment	Field of activity	Total		out of which:						
				PF+AF	companies: 9606				RA	OC
					SNC	SCS	SRL	SA		
					No.	No.	No.	No.		
0	1	2	3	4	5	6	7	8	9	10
	<b>Total ROMÂNIA</b>	<b>13249</b>	<b>100,0</b>	<b>3643</b>	<b>1</b>	<b>1</b>	<b>9535</b>	<b>69</b>		
1	Agriculture, hunting and related service activities	457	3,4	226			230	1		
2	Forestry, logging and related service activities	101	0,8	20			81			
5	Fishing, fish farming and related service activities	30	0,2	16			14			
10	Mining of coal and lignite; extraction of peat									
11	Extraction of crude petroleum and natural gas; service activities incidental to oil and gas extraction, excluding surveying	2	0,0				2			
12	Mining of uranium and thorium ores									
13	Mining of metal ores									
14	Other mining and quarrying	25	0,2				25			
15	Manufacture of food products and beverages	128	1,0	65			62	1		
16	Manufacture of tobacco products	1	0,0				1			
17	Manufacture of textiles	32	0,2	11			21			
18	Manufacture of wearing apparel; dressing and dyeing of fur	73	0,6	26			47			
19	Tanning and dressing of leather; manufacture of luggage, handbags, saddlery, harness and footwear	22	0,2	1			21			
20	Manufacture of wood and of products of wood and cork, except furniture; manufacture of articles of straw and plaiting materials	122	0,9	59			63			
21	Manufacture of pulp, paper and paper products	12	0,1	2			10			
22	Publishing, printing and reproduction of recorded media	62	0,5	3			59			
23	Manufacture of coke, refined petroleum products and nuclear fuel									
24	Manufacture of chemicals and chemical products	13	0,1				13			
25	Manufacture of rubber and plastic products	48	0,4	6			42			
26	Manufacture of other non-metallic mineral products	104	0,8	39			65			
27	Manufacture of basic metals	6	0,0				6			
28	Manufacture of fabricated metal products, except machinery and equipment	152	1,1	54			98			
29	Manufacture of machinery and equipment n.e.c.	19	0,1				18	1		
30	Manufacture of office machinery and computers	2	0,0				2			
31	Manufacture of electrical machinery and apparatus n.e.c.	11	0,1				11			
32	Manufacture of radio, television and communication equipment and apparatus	4	0,0				4			
33	Manufacture of medical, precision and optical instruments, watches and clocks	23	0,2	7			16			
34	Manufacture of motor vehicles, trailers and semi- trailers	3	0,0	1			2			
35	Manufacture of other transport equipment	20	0,2	1			19			
36	Manufacture of furniture; manufacturing n.e.c.	131	1,0	39			92			
37	Recycling	31	0,2	2			29			
40	Electricity, gas, steam and hot water supply	19	0,1				14	5		
41	Collection, purification and distribution of water	2	0,0	1			1			
45	Construction	2323	17,5	508		1	1810	4		



Table no. 11

**Number of companies registered and the amount  
of subscribed capital, by county in February 2007**

County	Total registered companies		Subscribed capital		Average subscribed capital on company
	No.	%	mii RON	%	mii RON
0	1	2	3	4	5
<b>Total ROMÂNIA</b>	<b>9606</b>	<b>100,0</b>	<b>247272,6</b>	<b>100,0</b>	<b>25,9</b>
ALBA	146	1,5	477,9	0,2	3,3
ARAD	224	2,3	1606,4	0,6	7,2
ARGES	225	2,3	1290,4	0,5	5,7
BACAU	213	2,2	118,7	0,0	0,6
BIHOR	253	2,6	214,5	0,1	0,9
BISTRITA-NASAUD	112	1,2	59,6	0,0	0,5
BOTOSANI	58	0,6	71,7	0,0	1,2
BRASOV	316	3,3	5522,3	2,2	17,6
BRAILA	113	1,2	128,9	0,1	1,2
BUZAU	169	1,8	201,9	0,1	1,2
CARAS-SEVERIN	108	1,1	898,3	0,4	8,3
CALARASI	65	0,7	22,4	***	0,3
CLUJ	523	5,4	4627,2	1,9	9,0
CONSTANTA	393	4,1	1139,4	0,5	2,9
COVASNA	68	0,7	71,9	0,0	1,1
DAMBOVITA	175	1,8	145,3	0,1	0,8
DOLJ	231	2,4	951,9	0,4	4,2
GALATI	214	2,2	263,7	0,1	1,3
GIURGIU	82	0,9	128,3	0,1	1,6
GORJ	92	1,0	65,9	0,0	0,7
HARGHITA	92	1,0	44,9	0,0	0,5
HUNEDOARA	155	1,6	59,8	0,0	0,4
IALOMITA	66	0,7	335,9	0,1	5,1
IASI	280	2,9	2991,0	1,2	10,8
MARAMURES	228	2,4	1106,4	0,4	4,9
MEHEDINTI	73	0,8	31,0	0,0	0,4
MURES	216	2,2	279,8	0,1	1,3
NEAMT	167	1,7	56,7	0,0	0,3
OLT	98	1,0	714,0	0,3	7,3
PRAHOVA	256	2,7	780,5	0,3	3,1
SALAJ	88	0,9	46,0	0,0	0,5
SATU MARE	171	1,8	917,7	0,4	5,4
SIBIU	210	2,2	444,7	0,2	2,1
SUCEAVA	186	1,9	156,8	0,1	0,8
TELEORMAN	89	0,9	31,9	0,0	0,4
TIMIS	424	4,4	760,1	0,3	1,8
TULCEA	73	0,8	67,6	0,0	0,9
VASLUI	72	0,7	9911,5	4,0	137,7
VALCEA	120	1,2	398,8	0,2	3,4
VRANCEA	100	1,0	147,6	0,1	1,5
MUN. BUCURESTI	2301	24,0	206661,2	83,6	90,4
ILFOV	361	3,8	3321,8	1,3	9,2

Table no. 12

**Number of registered companies and the amount  
of subscribed capital by category,  
in February 2007**

Company type	Total registered companies		Subscribed capital		Average subscribed capital on company
	No.	%	mii RON	%	mil. RON
0	1	2	3	4	5
<b>Total ROMÂNIA</b>	<b>9606</b>	<b>100,0</b>	<b>247272,6</b>	<b>100,0</b>	<b>25,9</b>
SNC	1	0,0			
SCS	1	0,0			
SA	69	0,7	183888,0	74,4	6810,7
SRL	9535	99,3	63384,7	25,6	6,7
SCA					

*Note: The average does not include filials because according to the Law no.31/1990 they are not juridical persons*

\*\*\* Less than 0,01%

Diagram no.5

