



MINISTRY OF JUSTICE

THE NATIONAL TRADE REGISTER OFFICE

București, Bd. Unirii nr. 74, Bl. J3b, tronson II+III, sector 3; Telefon: +40 21 316.08.04, 316.08.10; Fax: +40 21 316.08.03 Cod poștal: 030837
Website: www.onrc.ro; E-mail: onrc@onrc.ro; Cod de identificare Fiscală: 14942091; înregistrat ca operator date personale sub nr.1350

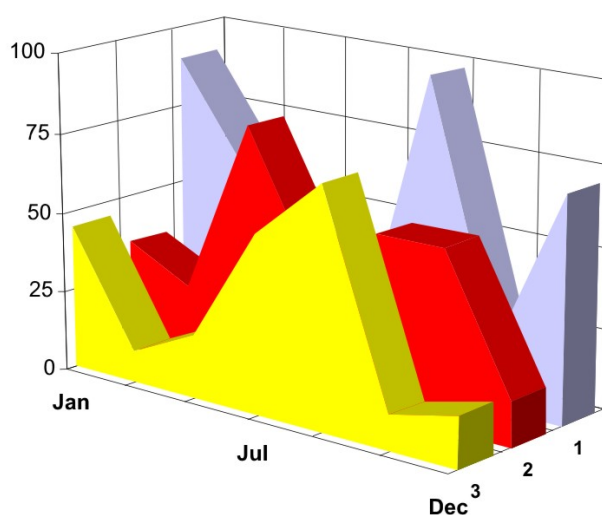
PROCEEDINGS IN THE CENTRAL TRADE REGISTER

STATISTICAL SYNTHESIS

OF

RECORDS IN THE CENTRAL TRADE REGISTER

- the 31th of December 2006 - provisional data -



- ISSUE No. 181 -

**MINISTRY OF JUSTICE
THE NATIONAL TRADE REGISTER OFFICE**

- Operations of incorporation of companies, changes in statutory documents and strike-off of companies are based on Law No.26/1990 reissued, Law No.31/1990, reissued, OUG No.76/2001, reissued and Methodology Norms No. P/608/1998.

- This paper presents the trend in operations registered in The Trade Register Office attached to the law court of Bucharest and in the Trade Register Offices attached to the law court in each county of Romania.

- Information recorded in the Central Trade Register concern operations compulsory by law to be registered in the trade registers within the 42 trade register offices attached to the law courts.

• No part of the content of this publication, in original or in any modified format, September be reproduced, stored in a retrieval system, or transmitted, in any form or by any means, without the prior permission in writing of The Ministry of Justice – The National Trade Register Office.

• The content of this publication September be referred to in articles, studies, books, as supporting or explanatory data under the condition only, the source of the information to be clearly and precisely specified.

1	Explanatory Note	1
2.1	Data for December 1990 – December 2006	3
	Table no.1 – Operations registered in the Trade Register, by categories during the period of December 1990 – December 2006, in total by country and counties, rate of categories of operations in total operations country	3
	Table no.1.a – Operations registered in the Trade Register, by categories during the period of December 1990 – December 2006, in total by country and counties, counties’ rate in total country	4
	Table no. 3 – Number and structure of incorporations in the Trade Register, by years, during the period of December 1990- December 2006	5
	Table no.4 – The number of incorporations in the Trade Register, by counties and sources of capital, in the period December 1990 - December 2006	6
	Table no. 5 – The number of incorporations in the Trade Register, by counties and categories, during the period of December 1990 – December 2006	7
	Table no. 6 – The number of incorporations in the Trade Register, by field of activity and categories, during the period of December 1990 - December 2006	8
	2.2 Data for December 2006	10
	Table no. 7 – Operations carried on with the Trade Registers, by counties and categories, in December 2006	10
	Table no. 8 – The number of incorporations in the Trade Register, by counties and sources of capital, in December 2006	11
	Table no. 9 – The number of incorporations in the Trade Register, by counties and category in December 2006	12
	Table no. 10 –The number of incorporations in the Trade Register, by field of activity and categories in December 2006	13
	Table no. 11 – Number of companies registered and the amount of subscribed capital, by county in December 2006	15
	Table no. 12– Number of registered companies and the amount of subscribed capital by category, in December 2006	16
	Diagram no. 5 – Average subscribed capital on company in December 2006	16

Explanatory Note

The Trade Register Office is set-up by Law No. 26/1990, reissued and modified by OUG No. 129/2002, became an active institution since December 1990 and is structured in two levels:

- the national level, represented by the National Trade Register Office organised under the Ministry of Justice
- the local level, represented by the 42 trade register offices attached to the law courts and co-ordinated by the National Trade Register Office

The categories of businessmen compulsory to register in the trade register are:

- natural persons tradesmen and family associations doing usually commercial acts, commercial companies, national companies, companies under state supervision, and co-operative organisations
- subsidiaries registered as commercial companies and legal persons following the legal proceedings of set-up, activity and incorporation according to the type of the legally set-up company.

Usual Terms:

- incorporation – represents the registration of the company in the trade registry awarding the quality of legal person.

- other statutory documents – represent the official registration of the changes occurred in a company's life, such as: changes in headquarters' address, increase or decrease of the issued capital, merger, liquidation, strike-off, etc.

- strike-off – represents the removal of a company from the trade registry, due to dissolution and liquidation, being also the very moment the company loses its quality of legal person. Data also include the companies under the provisions of Law No. 314/2001.

- change of certificate – represents the obligation of companies set-up before OGU No. 76/2001 republished came in force, to request the incorporation certificate and fiscal registration certificate to be replaced with the new registration certificate containing the given unique registration code.

The ratio of these changes is being calculated as a proportion between the effective number of changes and the number of active companies due to operate the change.

- active company from the legal point of view – a company registered in the trade register and which is not affected by any of the situations leading to the temporary or permanent loss of this status (e.g. dissolution, liquidation, strike-off)

- operations represent all the records in the trade registry including incorporations, other statutory documents and strike-off of companies, irrespective of the object of activity, company's type and origin of the subscribed capital (local or foreign investment).

• **Terms used in tables and charts**

➤ **Number of companies:** represents, depending on the specific table, the number of companies incorporated in the related period, the number of companies being struck-off from the trade registry.

➤ **Amount of the subscribed capital:**

- **total, in local currency:** the amount of the subscribed capital resulted from totalising the amount subscribed (in cash and in kind) in local currency (ROL)

➤ **Regional development:**

<i>North-East:</i>	Suceava, Botoșani, Neamț, Iași, Bacău, Vaslui.
<i>South-East:</i>	Vrancea, Galați, Buzău, Brăila, Tulcea, Constanța.
<i>South-Muntenia:</i>	Argeș, Dâmbovița, Prahova, Teleorman, Giurgiu, Călărași, Ialomița.
<i>South-West Oltenia:</i>	Gorj, Vâlcea, Dolj, Mehedinți, Olt.
<i>West:</i>	Arad, Caraș-Severin, Hunedoara, Timiș.
<i>North-West:</i>	Bihor, Bistrița, Cluj, Satu Mare, Sălaj, Maramureș.
<i>Center:</i>	Alba, Brașov, Covasna, Harghita, Mureș, Sibiu.
<i>Bucharest-Ilfov:</i>	București, Ilfov.

CAEN code – The Classification of Activities in the National Economy was approved by HG No. 656/1997, modified by Order No 601 of the President of National Institute of Statistics being compatible with the international classification used in statistic reports and official documents. Activities are ranked upon homogeneity principle by sections, divisions, groups and classes.

Common abbreviations

- **PF** - Natural Persons Tradesman
- **AF** - Family association
- **SNC** - General Partnership
- **SCS** - Limited Partnership
- **SA** - Joint stock company
- **SRL** - Limited liability company
- **RA** - Company Under State Supervision
- **OC** - Co-operative organisation

Source:

The integrated IT system of the trade registry is designed by The National Trade Registry Office according to the provisions of the related legislation in force. The source of information is the computerised system of the trade registers handled by the Trade Register Offices attached to the law courts.

Table no. 1

**Operations registered in the Trade Register, by categories
during the period of December 1990 - December 2006 in total by country and counties,
- rate of categories of operations in total operations/country -**

Counties	Total of registered operations		out of which :									
			Registered companies		Changes in statutory documents		out of which :				Strike off companies	
	of liquidation, dissolution						out of which :					
	No.	%	No.	%	No.	%	No.	%	No.	%	No.	%
0	1	2	3	4	5	6	7	8	9	10	11	12
Total ROMÂNIA	7677450	100,0	1553572	100,0	5664803	100,0	9911	100,0	165854	100,0	459075	100,0
ALBA	104714	1,4	24169	1,6	76369	1,3	371	3,7	3596	2,2	4176	0,9
ARAD	170981	2,2	38072	2,5	123646	2,2	369	3,7	2974	1,8	9263	2,0
ARGES	181832	2,4	40093	2,6	133428	2,4	197	2,0	4219	2,5	8311	1,8
BACAU	180848	2,4	39318	2,5	130300	2,3	1003	10,1	5280	3,2	11230	2,4
BIHOR	236405	3,1	46185	3,0	176763	3,1	303	3,1	4598	2,8	13457	2,9
BISTRITA-NASAUD	94574	1,2	18956	1,2	69924	1,2	72	0,7	1120	0,7	5694	1,2
BOTOSANI	71266	0,9	19223	1,2	47475	0,8	66	0,7	1563	0,9	4568	1,0
BRASOV	253693	3,3	48288	3,1	195069	3,4	149	1,5	4892	2,9	10336	2,3
BRAILA	97756	1,3	21616	1,4	73018	1,3	61	0,6	2540	1,5	3122	0,7
BUZAU	145076	1,9	28673	1,8	106685	1,9	146	1,5	2109	1,3	9718	2,1
CARAS-SEVERIN	98394	1,3	19273	1,2	71224	1,3	41	0,4	1922	1,2	7897	1,7
CALARASI	65374	0,9	15742	1,0	45876	0,8	79	0,8			3756	0,8
CLUJ	334029	4,4	70835	4,6	254399	4,5	197	2,0			8795	1,9
CONSTANTA	333242	4,3	65468	4,2	243747	4,3	926	9,3	10621	6,4	24027	5,2
COVASNA	70065	0,9	13281	0,9	52693	0,9	18	0,2	1175	0,7	4091	0,9
DAMBOVITA	117926	1,5	29068	1,9	76324	1,3	98	1,0	2951	1,8	12534	2,7
DOLJ	197938	2,6	41317	2,7	145281	2,6	215	2,2	5633	3,4	11340	2,5
GALATI	214548	2,8	36941	2,4	164343	2,9	125	1,3	5370	3,2	13264	2,9
GIURGIU	53477	0,7	12571	0,8	36300	0,6	47	0,5			4606	1,0
GORJ	103458	1,3	18693	1,2	79163	1,4	48	0,5	2667	1,6	5602	1,2
HARGHITA	110773	1,4	23472	1,5	83592	1,5	51	0,5			3709	0,8
HUNEDOARA	147509	1,9	32159	2,1	105974	1,9	126	1,3	2944	1,8	9376	2,0
IALOMITA	73368	1,0	14648	0,9	53657	0,9	78	0,8	1586	1,0	5063	1,1
IASI	260832	3,4	47617	3,1	202658	3,6	597	6,0	4224	2,5	10557	2,3
MARAMURES	157616	2,1	40078	2,6	108540	1,9	159	1,6	2924	1,8	8998	2,0
MEHEDINTI	81208	1,1	17758	1,1	55789	1,0	55	0,6	3085	1,9	7661	1,7
MURES	190437	2,5	39213	2,5	139752	2,5	83	0,8	2942	1,8	11472	2,5
NEAMT	162593	2,1	34530	2,2	114888	2,0	304	3,1	2435	1,5	13175	2,9
OLT	101603	1,3	22281	1,4	70760	1,2	21	0,2	2033	1,2	8562	1,9
PRAHOVA	267055	3,5	51217	3,3	202868	3,6	274	2,8	3934	2,4	12970	2,8
SALAJ	64008	0,8	14931	1,0	44897	0,8	29	0,3	683	0,4	4180	0,9
SATU MARE	124665	1,6	26025	1,7	89356	1,6	26	0,3	2934	1,8	9284	2,0
SIBIU	167579	2,2	29907	1,9	131018	2,3	31	0,3	2583	1,6	6654	1,4
SUCEAVA	186580	2,4	39665	2,6	131895	2,3	29	0,3	2387	1,4	15020	3,3
TELEORMAN	85436	1,1	17614	1,1	63858	1,1	49	0,5	1504	0,9	3964	0,9
TIMIS	286913	3,7	53826	3,5	218734	3,9	271	2,7	7273	4,4	14353	3,1
TULCEA	79065	1,0	16187	1,0	58014	1,0	149	1,5	1002	0,6	4864	1,1
VASLUI	89177	1,2	20088	1,3	61055	1,1	197	2,0	1384	0,8	8034	1,8
VALCEA	122607	1,6	25911	1,7	88981	1,6	138	1,4	1888	1,1	7715	1,7
VRANCEA	97111	1,3	19321	1,2	74013	1,3	51	0,5	1594	1,0	3777	0,8
MUN. BUCURESTI	1595514	20,8	295089	19,0	1192540	21,1	2641	26,6	51406	31,0	107885	23,5
ILFOV	100205	1,3	24253	1,6	69937	1,2	21	0,2	1879	1,1	6015	1,3

*) according to the effect of Law No. 314/2001, art.1 și art. 6

*** Less than 0,01%

Table no. 2

**Operations registered in the Trade Register, by categories
during the period of December 1990 - December 2006, in total by country and counties,
- rate of categories of operations in total operations/country -**

Counties	Total of registered operations		out of which :									
			Registered companies		Changes in statutory documents		out of which :				Strike off companies	
	of liquidation, dissolution						out of which :					
	No.	%	No.	%	No.	%	No.	%	No.	%	No.	%
0	1	2	3	4	5	6	7	8	9	10	11	12
Total ROMÂNIA	7677450	100,0	1553572	20,2	5664803	73,8	9911	0,1	165854	2,2	459075	6,0
ALBA	104714	100,0	24169	23,1	76369	72,9	371	0,4	3596	3,4	4176	4,0
ARAD	170981	100,0	38072	22,3	123646	72,3	369	0,2	2974	1,7	9263	5,4
ARGES	181832	100,0	40093	22,0	133428	73,4	197	0,1	4219	2,3	8311	4,6
BACAU	180848	100,0	39318	21,7	130300	72,0	1003	0,6	5280	2,9	11230	6,2
BIHOR	236405	100,0	46185	19,5	176763	74,8	303	0,1	4598	1,9	13457	5,7
BISTRITA-NASAUD	94574	100,0	18956	20,0	69924	73,9	72	0,1	1120	1,2	5694	6,0
BOTOSANI	71266	100,0	19223	27,0	47475	66,6	66	0,1	1563	2,2	4568	6,4
BRASOV	253693	100,0	48288	19,0	195069	76,9	149	0,1	4892	1,9	10336	4,1
BRAILA	97756	100,0	21616	22,1	73018	74,7	61	0,1	2540	2,6	3122	3,2
BUZAU	145076	100,0	28673	19,8	106685	73,5	146	0,1	2109	1,5	9718	6,7
CARAS-SEVERIN	98394	100,0	19273	19,6	71224	72,4	41	0,0	1922	2,0	7897	8,0
CALARASI	65374	100,0	15742	24,1	45876	70,2	79	0,1			3756	5,7
CLUJ	334029	100,0	70835	21,2	254399	76,2	197	0,1			8795	2,6
CONSTANTA	333242	100,0	65468	19,6	243747	73,1	926	0,3	10621	3,2	24027	7,2
COVASNA	70065	100,0	13281	19,0	52693	75,2	18	0,0	1175	1,7	4091	5,8
DAMBOVITA	117926	100,0	29068	24,6	76324	64,7	98	0,1	2951	2,5	12534	10,6
DOLJ	197938	100,0	41317	20,9	145281	73,4	215	0,1	5633	2,8	11340	5,7
GALATI	214548	100,0	36941	17,2	164343	76,6	125	0,1	5370	2,5	13264	6,2
GIURGIU	53477	100,0	12571	23,5	36300	67,9	47	0,1			4606	8,6
GORJ	103458	100,0	18693	18,1	79163	76,5	48	0,0	2667	2,6	5602	5,4
HARGHITA	110773	100,0	23472	21,2	83592	75,5	51	0,0			3709	3,3
HUNEDOARA	147509	100,0	32159	21,8	105974	71,8	126	0,1	2944	2,0	9376	6,4
IALOMITA	73368	100,0	14648	20,0	53657	73,1	78	0,1	1586	2,2	5063	6,9
IASI	260832	100,0	47617	18,3	202658	77,7	597	0,2	4224	1,6	10557	4,0
MARAMURES	157616	100,0	40078	25,4	108540	68,9	159	0,1	2924	1,9	8998	5,7
MEHEDINTI	81208	100,0	17758	21,9	55789	68,7	55	0,1	3085	3,8	7661	9,4
MURES	190437	100,0	39213	20,6	139752	73,4	83	0,0	2942	1,5	11472	6,0
NEAMT	162593	100,0	34530	21,2	114888	70,7	304	0,2	2435	1,5	13175	8,1
OLT	101603	100,0	22281	21,9	70760	69,6	21	0,0	2033	2,0	8562	8,4
PRAHOVA	267055	100,0	51217	19,2	202868	76,0	274	0,1	3934	1,5	12970	4,9
SALAJ	64008	100,0	14931	23,3	44897	70,1	29	0,0	683	1,1	4180	6,5
SATU MARE	124665	100,0	26025	20,9	89356	71,7	26	0,0	2934	2,4	9284	7,4
SIBIU	167579	100,0	29907	17,8	131018	78,2	31	0,0	2583	1,5	6654	4,0
SUCEAVA	186580	100,0	39665	21,3	131895	70,7	29	0,0	2387	1,3	15020	8,1
TELEORMAN	85436	100,0	17614	20,6	63858	74,7	49	0,1	1504	1,8	3964	4,6
TIMIS	286913	100,0	53826	18,8	218734	76,2	271	0,1	7273	2,5	14353	5,0
TULCEA	79065	100,0	16187	20,5	58014	73,4	149	0,2	1002	1,3	4864	6,2
VASLUI	89177	100,0	20088	22,5	61055	68,5	197	0,2	1384	1,6	8034	9,0
VALCEA	122607	100,0	25911	21,1	88981	72,6	138	0,1	1888	1,5	7715	6,3
VRANCEA	97111	100,0	19321	19,9	74013	76,2	51	0,1	1594	1,6	3777	3,9
MUN. BUCURESTI	1595514	100,0	295089	18,5	1192540	74,7	2641	0,2	51406	3,2	107885	6,8
ILFOV	100205	100,0	24253	24,2	69937	69,8	21	0,0	1879	1,9	6015	6,0

*) according to the effect of Law No. 314/2001, art.1 și art. 6

*** Less than 0,01%

Table no.3

**Number and structure of incorporations in the Trade Register, by years,
December 2006**

Period (year, month)	Registered companies		Percentage	
	No.	%	%	
0	1	2	3	
Total, 31 February 2006, out of which	1553572	91,45		
Year 1990	81	0,01		
Year 1991	95840	6,17		
Year 1992	137456	8,85		
Year 1993	117078	7,54		
Year 1994	137445	8,85		
Year 1995	65479	4,21		
Year 1996	62089	4,00		
Year 1997	55663	3,58		
Year 1998	63878	4,11		
Year 1999	57197	3,68		
Year 2000	57291	3,69		
Year 2001	61265	3,94		
Year 2002	84780	5,46		
Year 2003	123582	7,95		
Year 2004	144284	9,29		
Year 2005	157375	10,13		
Year 2006 (I - XII) out of which :	132789			100,0
January	8797			6,6
February	12605			9,5
March	14410			10,9
April	10806			8,1
May	10051			7,6
June	12109			9,1
July	10289			7,7
August	10130			7,6
September	9158			6,90
October	10832			8,16
November	12016			9,05
December	11586			8,73

Note: Column 2 reveals the annual structure of incorporations; column 3 reveals the structure by months during the current year.

*** Less than 0,01%

Diagram no.1

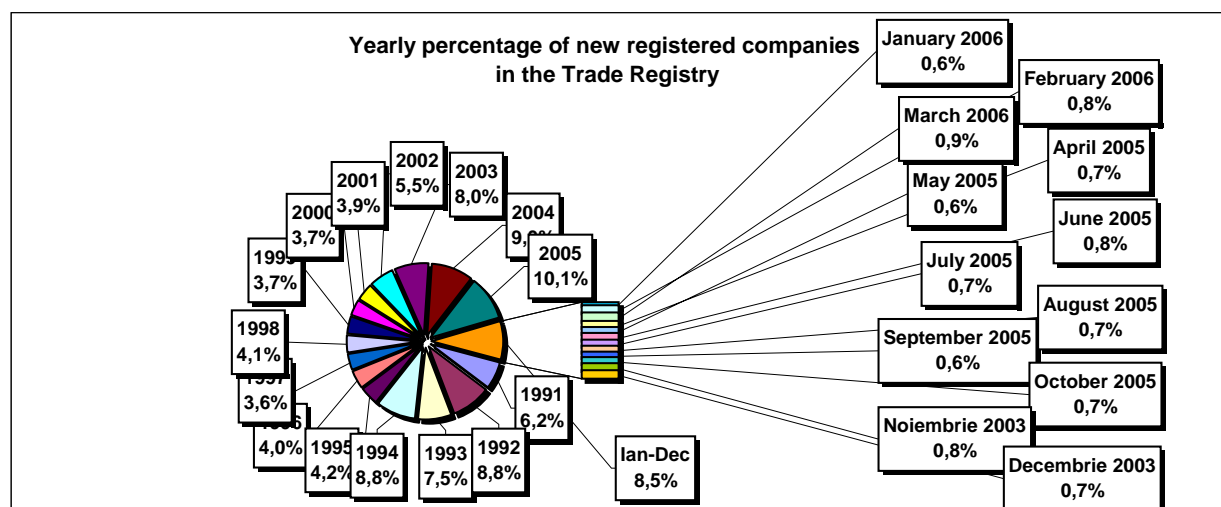


Table no. 4

The number of incorporations in the Trade Register, by counties and sources of capital, in the period December 1990 - December 2006

Counties	Total		out of which:					Ranking by: *	
			Private capital			State majority capital			Mixed capital (state+private)
			out of which:			out of which:			
			PF+AF	Companies	OC	RA	Companies		Companies
No.	%	No.	No.	No.	No.	No.	No.		
0	1	2	3	4	5	6	7	8	9
Total ROMÂNIA	1553572	100,0	398053	1137854	5394	1337	2361	8573	X
ALBA	24169	1,6	8306	15468	141	37	47	170	10
ARAD	38073	2,5	14513	23004	157	26	40	333	19
ARGES	40093	2,6	12976	26739	168	29	29	152	2
BACAU	39318	2,5	13133	25727	158	35	42	223	38
BIHOR	46185	3,0	10121	35511	146	37	62	308	6
BISTRITA-NASAUD	18956	1,2	6789	11912	98	19	29	109	42
BOTOSANI	19223	1,2	8742	10047	122	21	172	119	5
BRASOV	48288	3,1	9927	37946	114	44	87	170	31
BRAILA	21616	1,4	5387	15897	96	28	43	165	32
BUZAU	28673	1,8	8337	19995	142	26	42	131	30
CARAS-SEVERIN	19273	1,2	6687	12248	102	34	65	137	17
CALARASI	15742	1,0	4610	10856	86	18	77	95	29
CLUJ	70835	4,6	17785	52547	150	52	40	261	14
CONSTANTA	65468	4,2	12517	52108	203	51	49	540	16
COVASNA	13281	0,9	4466	8583	67	24	32	109	33
DAMBOVITA	29068	1,9	13370	15307	134	29	75	153	41
DOLJ	41317	2,7	8228	32628	162	40	57	202	28
GALATI	36941	2,4	7198	29384	135	30	51	143	40
GIURGIU	12571	0,8	2992	9258	80	22	109	110	1
GORJ	18693	1,2	4391	13885	184	50	83	100	4
HARGHITA	23472	1,5	9142	13949	86	23	43	229	34
HUNEDOARA	32159	2,1	8472	23194	81	38	92	282	15
IALOMITA	14648	0,9	5626	8796	74	15	46	91	22
IASI	47617	3,1	12994	34011	164	34	70	344	36
MARAMURES	40078	2,6	16313	23444	122	37	39	123	20
MEHEDINTI	17758	1,1	5628	11905	82	19	26	98	23
MURES	39213	2,5	14518	24308	156	30	34	167	3
NEAMT	34530	2,2	12754	21391	161	29	30	165	11
OLT	22281	1,4	8837	13070	161	26	64	123	7
PRAHOVA	51217	3,3	15652	34998	177	50	69	271	12
SALAJ	14931	1,0	5810	8904	107	19	28	63	27
SATU MARE	26025	1,7	8435	17307	88	19	42	134	39
SIBIU	29907	1,9	7205	22285	119	32	108	158	35
SUCEAVA	39665	2,6	18984	20165	202	30	64	220	26
TELEORMAN	17614	1,1	6047	11168	152	21	44	182	9
TIMIS	53826	3,5	8472	44760	140	38	68	348	8
TULCEA	16187	1,0	5551	10298	66	18	42	212	37
VASLUI	20088	1,3	9769	10018	109	16	41	135	24
VALCEA	25911	1,7	10223	15330	168	40	37	113	18
VRANCEA	19321	1,2	5893	13167	104	16	27	114	21
MUN. BUCURESTI	295088	19,0	18071	275552	138	115	103	1109	25
ILFOV	24253	1,6	3182	20784	92	20	13	162	13

*) The total number of incorporations (col 1)

*** Less than 0,01%

Table no. 5

**The number of incorporations in the Trade Register,
by counties and categories, during the period of
December 1990 - December 2006**

County	Total		out of which:						RA	OC
			PF+AF	companies: 1148788						
	No.	%		No.	SNC	SCS	SRL	SA	No.	No.
			No.		No.	No.	No.			
0	1	2	3	4	5	6	7	8	9	
Total ROMÂNIA	1553572	100,0	398053	32649	1563	1082831	31739	1337	5394	
ALBA	24169	1,6	8306	890	11	14239	545	37	141	
ARAD	38072	2,5	14513	53	11	22648	663	26	157	
ARGES	40093	2,6	12976	107	14	25995	804	29	168	
BACAU	39318	2,5	13133	1299	4	23969	719	35	158	
BIHOR	46185	3,0	10121	125	47	34826	883	37	146	
BISTRITA-NASAUD	18956	1,2	6789	146	21	11473	410	19	98	
BOTOSANI	19223	1,2	8742	468	1	9420	449	21	122	
BRASOV	48288	3,1	9927	239	20	37114	830	44	114	
BRAILA	21616	1,4	5387	376	12	15206	511	28	96	
BUZAU	28673	1,8	8337	3747	46	15815	560	26	142	
CARAS-SEVERIN	19273	1,2	6687	117	8	11863	462	34	102	
CALARASI	15742	1,0	4610	609	3	10069	347	18	86	
CLUJ	70835	4,6	17785	2111	18	49493	1226	52	150	
CONSTANTA	65468	4,2	12517	311	23	50909	1454	51	203	
COVASNA	13281	0,9	4466	148	4	8276	296	24	67	
DAMBOVITA	29068	1,9	13370	60	8	14982	485	29	134	
DOLJ	41317	2,7	8228	1560	8	30462	857	40	162	
GALATI	36941	2,4	7198	1574	6	27172	826	30	135	
GIURGIU	12571	0,8	2992	35	8	9114	320	22	80	
GORJ	18693	1,2	4391	29	1	13555	483	50	184	
HARGHITA	23472	1,5	9142	62	6	13670	483	23	86	
HUNEDOARA	32159	2,1	8472	1166	98	21642	662	38	81	
IALOMITA	14648	0,9	5626	266	11	8316	340	15	74	
IASI	47617	3,1	12994	506	111	32823	983	34	164	
MARAMURES	40078	2,6	16313	1926	23	21076	580	37	122	
MEHEDINTI	17758	1,1	5628	427	3	11276	323	19	82	
MURES	39213	2,5	14518	37	34	23786	652	30	156	
NEAMT	34530	2,2	12754	3293	30	17604	659	29	161	
OLT	22281	1,4	8837	1611	1	11162	483	26	161	
PRAHOVA	51217	3,3	15652	3122	14	31327	875	50	177	
SALAJ	14931	1,0	5810	600	4	8104	287	19	107	
SATU MARE	26025	1,7	8435	283	5	16729	466	19	88	
SIBIU	29907	1,9	7205	776	48	21086	641	32	119	
SUCEAVA	39665	2,6	18984	438	8	19427	576	30	202	
TELEORMAN	17614	1,1	6047	272	399	10317	406	21	152	
TIMIS	53826	3,5	8472	607	27	43313	1229	38	140	
TULCEA	16187	1,0	5551	1363	114	8605	470	18	66	
VASLUI	20088	1,3	9769	90	12	9692	400	16	109	
VALCEA	25911	1,7	10223	364	6	14633	477	40	168	
VRANCEA	19321	1,2	5893	356	10	12500	442	16	104	
MUN. BUCURESTI	295089	19,0	18071	1031	295	268839	6599	115	138	
ILFOV	24253	1,6	3182	49	30	20304	576	20	92	

Table no. 6

**The number of incorporations in the Trade Register, by field of activity*
during the period of December 1990 - December 2006**

CAEN segm ent	Field of activity	Total		out of which:						
				PF+AF	companies: 1148788				RA	OC
		No.	%		SNC	SCS	SRL	SA		
				No.	No.	No.	No.	No.		
0	1	2	3	4	5	6	7	8	9	10
	Total ROMANIA	1553572	100,0	398053	32649	1563	1082831	31739	1337	5394
1	Agriculture, hunting and related service activities	62714	4,0	15310	2024	44	41387	3780	52	117
2	Forestry, logging and related service activities	8212	0,5	1047	152	3	6691	222	89	8
5	Fishing, fish farming and related service activities	3030	0,2	1736	17	3	1221	53		
10	Mining of coal and lignite; extraction of peat	116	0,0	2			78	32	4	
11	Extraction of crude petroleum and natural gas; service activities incidental to oil and gas extraction, excluding surveying	340	0,0	11	1		158	124	46	
12	Mining of uranium and thorium ores	133	0,0	32			95	6		
13	Mining of metal ores	534	0,0	163			308	55	8	
14	Other mining and quarrying	1591	0,1	109	9	1	1300	169	2	1
15	Manufacture of food products and beverages	73275	4,7	14387	3260	149	53370	1856	5	248
16	Manufacture of tobacco products	287	0,0	47			208	31	1	
17	Manufacture of textiles	11709	0,8	2373	556	16	8213	406		145
18	Manufacture of wearing apparel; dressing and dyeing of fur	20869	1,3	4746	875	38	14547	357	1	305
19	Tanning and dressing of leather; manufacture of luggage, handbags, saddlery, harness and footwear	5265	0,3	904	112	6	4068	123	1	51
20	Manufacture of wood and of products of wood and cork, except furniture; manufacture of articles of straw and plaiting materials	24932	1,6	8834	575	29	14945	498	9	42
21	Manufacture of pulp, paper and paper products	1779	0,1	122	21	1	1524	98		13
22	Publishing, printing and reproduction of recorded media	11762	0,8	951	317	21	10045	404	14	10
23	Manufacture of coke, refined petroleum products and nuclear fuel	260	0,0	24			200	34	2	
24	Manufacture of chemicals and chemical products	3690	0,2	120	89	1	3091	377	6	6
25	Manufacture of rubber and plastic products	6170	0,4	566	313	7	5002	257		24
26	Manufacture of other non-metallic mineral products	9065	0,6	2760	212	6	5684	384	5	14
27	Manufacture of basic metals	2429	0,2	169	39	3	2001	207	3	7
28	Manufacture of fabricated metal products, except machinery and equipment	16958	1,1	4115	361	23	11664	722	11	62
29	Manufacture of machinery and equipment n.e.c.	3792	0,2	107	44	7	3190	420	19	5
30	Manufacture of office machinery and computers	1775	0,1	16	25	4	1650	80		
31	Manufacture of electrical machinery and apparatus n.e.c.	1931	0,1	112	44	6	1619	144		6
32	Manufacture of radio, television and communication equipment and apparatus	860	0,1	58	14	4	710	73		1
33	Manufacture of medical, precision and optical instruments, watches and clocks	2595	0,2	620	17	2	1849	103		4
34	Manufacture of motor vehicles, trailers and semi-trailers	910	0,1	30	31	3	719	125		2
35	Manufacture of other transport equipment	1902	0,1	282	86	7	1331	121	73	2
36	Manufacture of furniture; manufacturing n.e.c.	15426	1,0	4383	284	16	10244	336	5	158
37	Recycling	4850	0,3	425	51	5	4196	172		1
40	Electricity, gas, steam and hot water supply	2927	0,2	836	3	1	1484	515	88	
41	Collection, purification and distribution of water	3552	0,2	1624	2		1651	202	73	
45	Construction	92080	5,9	24372	611	42	64493	2432	53	77

*)Field of activity declared when registered, according to CAEN classification

Table no. 6
(continuing)

**The number of incorporations in the Trade Register, by field of activity*
and categories, during the period of December 1990 - December 2006**

CAEN segment	Field of activity	Total		out of which:						RA	OC
				PF+AF	companies: 1148788						
					SNC	SCS	SRL	SA			
					No.	No.	No.	No.			
0	1	2	3	4	5	6	7	8	9	10	
	Total ROMÂNIA	1553572	100,0	398053	32649	1563	1082831	31739	1337	5394	
50	Sale, maintenance and repair of motor vehicles and motorcycles; retail sale of automotive fuel	54023	3,5	8517	1244		43156	1024	6	42	
51	Wholesale trade and commission trade, except of motor vehicles and motorcycles	201885	13,0	17795	4524	150	175807	3292	35	282	
52	Retail trade, except of motor vehicles and motorcycles; repair of personal and household goods	498718	32,1	176608	11914	557	304762	2489	5	2382	
55	Hotels and restaurants	59982	3,9	14269	1635	126	42997	787	73	95	
60	Land transport; transport via pipelines	80722	5,2	35718	844	37	43025	1055	33	10	
61	Water transport	850	0,1	157	82	8	468	64	70	1	
62	Air transport	298	0,0	18			222	48	10		
63	Supporting and auxiliary transport activities; activities of travel agencies	10320	0,7	672	220	14	8868	439	96	11	
64	Post and telecommunications	7111	0,5	622	11	1	6165	298	11	3	
65	Financial intermediation, except insurance and pension funding	6340	0,4	145	15		2835	2310	2	1033	
66	Insurance and pension funding, except compulsory social security	2035	0,1	612	1		512	909		1	
67	Activities auxiliary to financial intermediation	6766	0,4	1266	7	2	5199	284		8	
70	Real estate activities	22382	1,4	736	28	9	20974	611	17	7	
71	Renting of machinery and equipment without operator and of personal and household goods	3381	0,2	655	116	8	2436	95	70	1	
72	Computer and related activities	23062	1,5	4512	120	13	18029	383	2	3	
73	Research and development	1711	0,1	244	11	2	1238	171	43	2	
74	Other business activities	108619	7,0	22309	792	74	83618	1659	106	60	
75	Public administration and defence; compulsory social security	360	0,0	90	5		217	26	21	1	
80	Education	6562	0,4	3215	62	6	3214	65			
85	Health and social work	16170	1,0	2120	233	15	13715	83	3	1	
90	Sewage and refuse disposal, sanitation and similar activities	905	0,1	94	13	2	670	106	18		
91	Activities of membership organizations n.e.c.	212	0,0	93	1		100	15		3	
92	Recreational, cultural and sporting activities	16421	1,1	4365	202	14	11460	298	70	12	
93	Other service activities	26087	1,7	11238	418	42	13881	305	76	126	
95	Activities of households as employers of domestic staff	853	0,1	536	6	1	306	3		1	
96	Extra-territorial organizations and bodies	10	0,0	10							

Table no. 7

**Operations carried on with the Trade Registers,
by counties and categories,
in December 2006**

County	Total of operations carried on		out of which:							
			New incorporations		Changes in statutory documents		out of which: of liquidation, dissolution		Strike off companies	
	No.	%	No.	%	No.	%	No.	%	No.	%
0	1	2	3	4	5	6	7	8	9	10
Total ROMÂNIA	76955	100,0	11586	15,1	60850	79,1	8471	11,0	4519	5,9
ALBA	1101	100,0	173	15,7	878	79,7	39	3,5	50	4,5
ARAD	1919	100,0	388	20,2	1384	72,1	327	17,0	147	7,7
ARGES	2365	100,0	314	13,3	1961	82,9	321	13,6	90	3,8
BACAU	1904	100,0	237	12,4	1279	67,2	76	4,0	388	20,4
BIHOR	2851	100,0	507	17,8	2053	72,0	36	1,3	291	10,2
BISTRITA-NASAUD	671	100,0	126	18,8	491	73,2	171	25,5	54	8,0
BOTOSANI	559	100,0	106	19,0	395	70,7	19	3,4	58	10,4
BRASOV	2746	100,0	373	13,6	2283	83,1	80	2,9	90	3,3
BRAILA	766	100,0	125	16,3	612	79,9			29	3,8
BUZAU	1238	100,0	200	16,2	968	78,2	17	1,4	70	5,7
CARAS-SEVERIN	709	100,0	187	26,4	502	70,8	320	45,1	20	2,8
CALARASI	703	100,0	85	12,1	612	87,1	80	11,4	6	0,9
CLUJ	3308	100,0	541	16,4	2599	78,6	212	6,4	168	5,1
CONSTANTA	3014	100,0	490	16,3	2421	80,3	438	14,5	103	3,4
COVASNA	473	100,0	91	19,2	337	71,2	54	11,4	45	9,5
DAMBOVITA	1187	100,0	234	19,7	729	61,4	141	11,9	224	18,9
DOLJ	1718	100,0	263	15,3	1348	78,5	541	31,5	107	6,2
GALATI	1195	100,0	204	17,1	948	79,3	34	2,8	43	3,6
GIURGIU	537	100,0	114	21,2	408	76,0	358	66,7	15	2,8
GORJ	880	100,0	120	13,6	706	80,2	1	0,1	54	6,1
HARGHITA	1138	100,0	221	19,4	848	74,5	189	16,6	69	6,1
HUNEDOARA	1894	100,0	203	10,7	1651	87,2	175	9,2	40	2,1
IALOMITA	443	100,0	69	15,6	332	74,9	3	0,7	42	9,5
IASI	2501	100,0	432	17,3	1991	79,6	484	19,4	78	3,1
MARAMURES	1997	100,0	258	12,9	1603	80,3	1	0,1	136	6,8
MEHEDINTI	668	100,0	95	14,2	542	81,1	13	1,9	31	4,6
MURES	1574	100,0	307	19,5	1180	75,0	54	3,4	87	5,5
NEAMT	1413	100,0	211	14,9	1130	80,0	12	0,8	72	5,1
OLT	715	100,0	124	17,3	557	77,9	24	3,4	34	4,8
PRAHOVA	2137	100,0	385	18,0	1592	74,5	494	23,1	160	7,5
SALAJ	942	100,0	141	15,0	611	64,9	8	0,8	190	20,2
SATU MARE	1197	100,0	195	16,3	965	80,6	75	6,3	37	3,1
SIBIU	1741	100,0	218	12,5	1413	81,2	73	4,2	110	6,3
SUCEAVA	1616	100,0	257	15,9	1237	76,5	52	3,2	122	7,5
TELEORMAN	588	100,0	98	16,7	459	78,1	54	9,2	31	5,3
TIMIS	2698	100,0	500	18,5	2117	78,5	32	1,2	81	3,0
TULCEA	448	100,0	76	17,0	333	74,3	160	35,7	39	8,7
VASLUI	658	100,0	110	16,7	495	75,2	8	1,2	53	8,1
VALCEA	857	100,0	170	19,8	603	70,4	60	7,0	84	9,8
VRANCEA	743	100,0	133	17,9	538	72,4	104	14,0	72	9,7
MUN. BUCURESTI	19696	100,0	2199	11,2	16652	84,5	3128	15,9	845	4,3
ILFOV	1447	100,0	306	21,1	1087	75,1	3	0,2	54	3,7

*) by effect of implementation of Law no. 314/2001, art.1 and art. 6

*** Less than 0,01%

Table no. 8

**The number of incorporations in the Trade Register,
by counties and sources of capital,
in December 2006**

County	Total		out of which:					Rnking by: *	
			Private capital			State majority capital			Mixed capital (state+priva)
			out of which:			out of which:			
			PF+AF	Companies	OC	RA	Companie s		Companie s
No.	%	No.	No.	No.	No.	No.	No.		
0	1	2	3	4	5	6	7	8	9
Total ROMÂNIA	11586	100,0	2333	9250		2		1	X
ALBA	173	1,5	47	126					16
ARAD	388	3,3	90	298					17
ARGES	314	2,7	62	252					42
BACAU	237	2,0	59	178					3
BIHOR	507	4,4	139	368					14
BISTRITA-NASAUD	126	1,1	28	98					20
BOTOSANI	106	0,9	49	57					10
BRASOV	373	3,2	100	273					4
BRAILA	125	1,1	29	96					27
BUZAU	200	1,7	62	138					6
CARAS-SEVERIN	187	1,6	31	155		1			29
CALARASI	85	0,7	18	67					19
CLUJ	541	4,7	107	434					18
CONSTANTA	490	4,2	64	426					12
COVASNA	91	0,8	31	60					35
DAMBOVITA	234	2,0	72	162					23
DOLJ	263	2,3	32	231					22
GALATI	204	1,8	37	167					9
GIURGIU	114	1,0	20	94					1
GORJ	120	1,0	21	99					7
HARGHITA	221	1,9	77	144					25
HUNEDOARA	203	1,8	33	169		1			13
IALOMITA	69	0,6	18	51					38
IASI	432	3,7	127	305					34
MARAMURES	258	2,2	43	215					37
MEHEDINTI	95	0,8	39	56					11
MURES	307	2,6	74	233					2
NEAMT	211	1,8	73	138					24
OLT	124	1,1	25	99					36
PRAHOVA	385	3,3	105	280					28
SALAJ	141	1,2	36	105					15
SATU MARE	195	1,7	68	127					26
SIBIU	218	1,9	39	179					40
SUCEAVA	257	2,2	71	186					30
TELEORMAN	98	0,8	22	76					8
TIMIS	500	4,3	56	444					32
TULCEA	76	0,7	30	46					31
VASLUI	110	0,9	33	77					33
VALCEA	170	1,5	48	122					5
VRANCEA	133	1,1	43	90					39
MUN. BUCURESTI	2199	19,0	133	2065				1	21
ILFOV	306	2,6	42	264					41

*) The total number of incorporations (col 1)

*** Less than 0,01%

Table no.9

**The number of incorporations in the Trade Register,
by counties and category
in December 2006**

County	Total		out of which:						RA	OC
			PF+AF	companies: 9251						
	No.	%		No.	SNC	SCS	SRL	SA	No.	No.
			No.		No.	No.	No.			
0	1	2	3	4	5	6	7	8	9	
Total ROMÂNIA	11586	100,0	2333		1	9166	84	2		
ALBA	173	1,5	47			126				
ARAD	388	3,3	90			298				
ARGES	314	2,7	62			251	1			
BACAU	237	2,0	59			177	1			
BIHOR	507	4,4	139			368				
BISTRITA-NASAUD	126	1,1	28			97	1			
BOTOSANI	106	0,9	49			56	1			
BRASOV	373	3,2	100			273				
BRAILA	125	1,1	29			95	1			
BUZAU	200	1,7	62			136	2			
CARAS-SEVERIN	187	1,6	31			153	2	1		
CALARASI	85	0,7	18			67				
CLUJ	541	4,7	107			431	3			
CONSTANTA	490	4,2	64			424	2			
COVASNA	91	0,8	31			60				
DAMBOVITA	234	2,0	72			162				
DOLJ	263	2,3	32			231				
GALATI	204	1,8	37			166	1			
GIURGIU	114	1,0	20			93	1			
GORJ	120	1,0	21			98	1			
HARGHITA	221	1,9	77			143	1			
HUNEDOARA	203	1,8	33			166	3	1		
IALOMITA	69	0,6	18			50	1			
IASI	432	3,7	127			304	1			
MARAMURES	258	2,2	43			215				
MEHEDINTI	95	0,8	39			56				
MURES	307	2,6	74			229	4			
NEAMT	211	1,8	73			136	2			
OLT	124	1,1	25			97	2			
PRAHOVA	385	3,3	105			274	6			
SALAJ	141	1,2	36			104	1			
SATU MARE	195	1,7	68			126	1			
SIBIU	218	1,9	39			177	2			
SUCEAVA	257	2,2	71			186				
TELEORMAN	98	0,8	22			73	3			
TIMIS	500	4,3	56			441	3			
TULCEA	76	0,7	30			44	2			
VASLUI	110	0,9	33		1	75	1			
VALCEA	170	1,5	48			120	2			
VRANCEA	133	1,1	43			90				
MUN. BUCURESTI	2199	19,0	133			2034	32			
ILFOV	306	2,6	42			264				

Table no. 10

**The number of incorporations in the Trade Register, by field of activity*
and categories in December 2006**

CAEN segment	Field of activity	Total		out of which:						
				PF+AF	companies: 9251				RA	OC
		SNC	SCS		SRL	SA				
		No.	%	No.	No.	No.	No.	No.	No.	
0	1	2	3	4	5	6	7	8	9	10
	Total ROMÂNIA	11586	100,0	2333		1	9166	84	2	
1	Agriculture, hunting and related service activities	322	2,8	129			193			
2	Forestry, logging and related service activities	78	0,7	2			74		2	
5	Fishing, fish farming and related service activities	32	0,3	15			17			
10	Mining of coal and lignite; extraction of peat	2	0,0				2			
11	Extraction of crude petroleum and natural gas; service activities incidental to oil and gas extraction, excluding surveying	3	0,0	3						
12	Mining of uranium and thorium ores									
13	Mining of metal ores	1	0,0				1			
14	Other mining and quarrying	28	0,2				26	2		
15	Manufacture of food products and beverages	151	1,3	73			77	1		
16	Manufacture of tobacco products									
17	Manufacture of textiles	33	0,3	12			21			
18	Manufacture of wearing apparel; dressing and dyeing of fur	84	0,7	23			61			
19	Tanning and dressing of leather; manufacture of luggage, handbags, saddlery, harness and footwear	20	0,2				20			
20	Manufacture of wood and of products of wood and cork, except furniture; manufacture of articles of straw and plaiting materials	100	0,9	39			61			
21	Manufacture of pulp, paper and paper products	5	0,0				5			
22	Publishing, printing and reproduction of recorded media	48	0,4	5			42	1		
23	Manufacture of coke, refined petroleum products and nuclear fuel	1	0,0				1			
24	Manufacture of chemicals and chemical products	13	0,1	1			12			
25	Manufacture of rubber and plastic products	33	0,3	2			31			
26	Manufacture of other non-metallic mineral products	65	0,6	16			49			
27	Manufacture of basic metals	9	0,1	1			8			
28	Manufacture of fabricated metal products, except machinery and equipment	144	1,2	41			102	1		
29	Manufacture of machinery and equipment n.e.c.	22	0,2	1			21			
30	Manufacture of office machinery and computers	8	0,1	1			7			
31	Manufacture of electrical machinery and apparatus n.e.c.	4	0,0	1			3			
32	Manufacture of radio, television and communication equipment and apparatus	2	0,0	1			1			
33	Manufacture of medical, precision and optical instruments, watches and clocks	32	0,3	7			25			
34	Manufacture of motor vehicles, trailers and semi- trailers	4	0,0				4			
35	Manufacture of other transport equipment	15	0,1	2			13			
36	Manufacture of furniture; manufacturing n.e.c.	116	1,0	20			96			
37	Recycling	20	0,2				20			
40	Electricity, gas, steam and hot water supply	14	0,1	1			12	1		
41	Collection, purification and distribution of water	7	0,1				2	5		
45	Construction	1774	15,3	215			1556	3		

**Number of companies registered and the amount
of subscribed capital, by county in December 2006**

County	Total registered companies		Subscribed capital		Average subscribed capital on company
	No.	%	mii RON	%	mii RON
0	1	2	3	4	5
Total ROMÂNIA	9251	100,0	183102,3	100,0	20,0
ALBA	126	1,4	37,7	0,0	0,3
ARAD	298	3,2	540,1	0,3	1,8
ARGES	252	2,7	1939,8	1,1	7,7
BACAU	178	1,9	6960,1	3,8	39,1
BIHOR	368	4,0	5124,8	2,8	13,9
BISTRITA-NASAUD	98	1,1	352,1	0,2	3,7
BOTOSANI	57	0,6	27,5	0,0	0,5
BRASOV	273	3,0	455,9	0,2	1,7
BRAILA	96	1,0	422,6	0,2	4,4
BUZAU	138	1,5	237,5	0,1	1,7
CARAS-SEVERIN	155	1,7	455,9	0,2	3,0
CALARASI	67	0,7	14,3	***	0,2
CLUJ	434	4,7	5932,7	3,2	13,7
CONSTANTA	426	4,6	819,0	0,4	1,9
COVASNA	60	0,6	24,5	0,0	0,4
DAMBOVITA	162	1,8	27293,3	14,9	168,5
DOLJ	231	2,5	104,6	0,1	0,5
GALATI	167	1,8	159,0	0,1	1,0
GIURGIU	94	1,0	136,7	0,1	1,5
GORJ	99	1,1	76,7	0,0	0,8
HARGHITA	144	1,6	209,3	0,1	1,5
HUNEDOARA	169	1,8	2753,3	1,5	16,6
IALOMITA	51	0,6	11,1	***	0,2
IASI	305	3,3	25035,1	13,7	82,4
MARAMURES	215	2,3	144,0	0,1	0,7
MEHEDINTI	56	0,6	11,4	***	0,2
MURES	233	2,5	377,1	0,2	1,6
NEAMT	138	1,5	77,2	0,0	0,6
OLT	99	1,1	126,1	0,1	1,3
PRAHOVA	280	3,0	1688,3	0,9	6,1
SALAJ	105	1,1	216,6	0,1	2,1
SATU MARE	127	1,4	142,0	0,1	1,1
SIBIU	179	1,9	275,4	0,2	1,6
SUCEAVA	186	2,0	403,2	0,2	2,2
TELEORMAN	76	0,8	765,1	0,4	10,5
TIMIS	444	4,8	664,4	0,4	1,5
TULCEA	46	0,5	46,6	0,0	1,1
VASLUI	77	0,8	48,7	0,0	0,6
VALCEA	122	1,3	623,0	0,3	5,1
VRANCEA	90	1,0	47,8	0,0	0,5
MUN. BUCURESTI	2066	22,3	92986,9	50,8	45,6
ILFOV	264	2,9	5335,2	2,9	20,2

Note: The average does not include filials because according to the Law no.31/1990 they are not juridical persons

*** Less than 0,01%

Table no. 12

**Number of registered companies and the amount
of subscribed capital by category,
in December 2006**

Company type	Total registered companies		Subscribed capital		Average subscribed capital on company
	No.	%	mii RON	%	mil. RON
0	1	2	3	4	5
Total ROMÂNIA	9251	100,0	183102,3	100,0	20,0
SNC					
SCS	1	0,0	2,6	***	2,6
SA	84	0,9	14997,5	8,2	681,7
SRL	9166	99,1	168102,1	91,8	18,4
SCA					

Note: The average does not include filials because according to the Law no.31/1990 they are not juridical persons

*** Less than 0,01%

Diagram no.5

