



MINISTRY OF JUSTICE

THE NATIONAL TRADE REGISTER OFFICE

București, Bd. Unirii nr. 74, Bl. J3b, tronson II+III, sector 3; Telefon: +40 21 316.08.04, 316.08.10; Fax: +40 21 316.08.03 Cod poștal: 030837
Website: www.onrc.ro; E-mail: onrc@onrc.ro; Cod de identificare Fiscală: 14942091; înregistrat ca operator date personale sub nr.1350

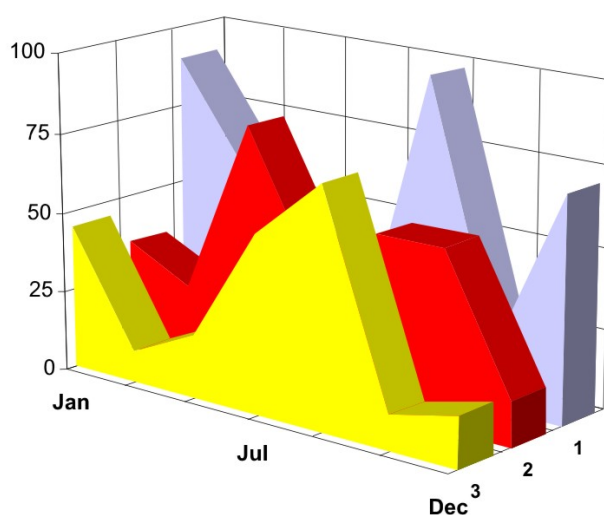
PROCEEDINGS IN THE CENTRAL TRADE REGISTER

STATISTICAL SYNTHESIS

OF

RECORDS IN THE CENTRAL TRADE REGISTER

- the 30th of November 2006 - provisional data -



- ISSUE No. 180 -

**MINISTRY OF JUSTICE
THE NATIONAL TRADE REGISTER OFFICE**

- Operations of incorporation of companies, changes in statutory documents and strike-off of companies are based on Law No.26/1990 reissued, Law No.31/1990, reissued, OUG No.76/2001, reissued and Methodology Norms No. P/608/1998.

- This paper presents the trend in operations registered in The Trade Register Office attached to the law court of Bucharest and in the Trade Register Offices attached to the law court in each county of Romania.

- Information recorded in the Central Trade Register concern operations compulsory by law to be registered in the trade registers within the 42 trade register offices attached to the law courts.

• No part of the content of this publication, in original or in any modified format, September be reproduced, stored in a retrieval system, or transmitted, in any form or by any means, without the prior permission in writing of The Ministry of Justice – The National Trade Register Office.

• The content of this publication September be referred to in articles, studies, books, as supporting or explanatory data under the condition only, the source of the information to be clearly and precisely specified.

1	Explanatory Note	1
2.1	Data for December 1990 – November 2006	3
	Table no.1 – Operations registered in the Trade Register, by categories during the period of December 1990 – November 2006, in total by country and counties, rate of categories of operations in total operations country	3
	Table no.1.a – Operations registered in the Trade Register, by categories during the period of December 1990 – November 2006, in total by country and counties, counties’ rate in total country	4
	Table no. 3 – Number and structure of incorporations in the Trade Register, by years, during the period of December 1990- November 2006	5
	Table no.4 – The number of incorporations in the Trade Register, by counties and sources of capital, in the period December 1990 - November 2006	6
	Table no. 5 – The number of incorporations in the Trade Register, by counties and categories, during the period of December 1990 – November 2006	7
	Table no. 6 – The number of incorporations in the Trade Register, by field of activity and categories, during the period of December 1990 - November 2006	8
	2.2 Data for November 2006	10
	Table no. 7 – Operations carried on with the Trade Registers, by counties and categories, in November 2006	10
	Table no. 8 – The number of incorporations in the Trade Register, by counties and sources of capital, in November 2006	11
	Table no. 9 – The number of incorporations in the Trade Register, by counties and category in November 2006	12
	Table no. 10 –The number of incorporations in the Trade Register, by field of activity and categories in November 2006	13
	Table no. 11 – Number of companies registered and the amount of subscribed capital, by county in November 2006	15
	Table no. 12– Number of registered companies and the amount of subscribed capital by category, in November 2006	16
	Diagram no. 5 – Average subscribed capital on company in November 2006	16

Explanatory Note

The Trade Register Office is set-up by Law No. 26/1990, reissued and modified by OUG No. 129/2002, became an active institution since December 1990 and is structured in two levels:

- the national level, represented by the National Trade Register Office organised under the Ministry of Justice
- the local level, represented by the 42 trade register offices attached to the law courts and co-ordinated by the National Trade Register Office

The categories of businessmen compulsory to register in the trade register are:

- natural persons tradesmen and family associations doing usually commercial acts, commercial companies, national companies, companies under state supervision, and co-operative organisations
- subsidiaries registered as commercial companies and legal persons following the legal proceedings of set-up, activity and incorporation according to the type of the legally set-up company.

Usual Terms:

- incorporation – represents the registration of the company in the trade registry awarding the quality of legal person.

- other statutory documents – represent the official registration of the changes occurred in a company's life, such as: changes in headquarters' address, increase or decrease of the issued capital, merger, liquidation, strike-off, etc.

- strike-off – represents the removal of a company from the trade registry, due to dissolution and liquidation, being also the very moment the company loses its quality of legal person. Data also include the companies under the provisions of Law No. 314/2001.

- change of certificate – represents the obligation of companies set-up before OGU No. 76/2001 republished came in force, to request the incorporation certificate and fiscal registration certificate to be replaced with the new registration certificate containing the given unique registration code.

The ratio of these changes is being calculated as a proportion between the effective number of changes and the number of active companies due to operate the change.

- active company from the legal point of view – a company registered in the trade register and which is not affected by any of the situations leading to the temporary or permanent loss of this status (e.g. dissolution, liquidation, strike-off)

- operations represent all the records in the trade registry including incorporations, other statutory documents and strike-off of companies, irrespective of the object of activity, company's type and origin of the subscribed capital (local or foreign investment).

• **Terms used in tables and charts**

➤ **Number of companies:** represents, depending on the specific table, the number of companies incorporated in the related period, the number of companies being struck-off from the trade registry.

➤ **Amount of the subscribed capital:**

- **total, in local currency:** the amount of the subscribed capital resulted from totalising the amount subscribed (in cash and in kind) in local currency (ROL)

➤ **Regional development:**

North-East: Suceava, Botoșani, Neamț, Iași, Bacău, Vaslui.

South-East: Vrancea, Galați, Buzău, Brăila, Tulcea, Constanța.

South-Muntenia: Argeș, Dâmbovița, Prahova, Teleorman, Giurgiu, Călărași, Ialomița.

South-West Oltenia: Gorj, Vâlcea, Dolj, Mehedinți, Olt.

West: Arad, Caraș-Severin, Hunedoara, Timiș.

North-West: Bihor, Bistrița, Cluj, Satu Mare, Sălaj, Maramureș.

Center: Alba, Brașov, Covasna, Harghita, Mureș, Sibiu.

Bucharest-Ilfov: București, Ilfov.

CAEN code – The Classification of Activities in the National Economy was approved by HG No. 656/1997, modified by Order No 601 of the President of National Institute of Statistics being compatible with the international classification used in statistic reports and official documents. Activities are ranked upon homogeneity principle by sections, divisions, groups and classes.

Common abbreviations

- **PF** - Natural Persons Tradesman
- **AF** - Family association
- **SNC** - General Partnership
- **SCS** - Limited Partnership
- **SA** - Joint stock company
- **SRL** - Limited liability company
- **RA** - Company Under State Supervision
- **OC** - Co-operative organisation

Source:

The integrated IT system of the trade registry is designed by The National Trade Registry Office according to the provisions of the related legislation in force. The source of information is the computerised system of the trade registers handled by the Trade Register Offices attached to the law courts.

Table no. 1

**Operations registered in the Trade Register, by categories
during the period of December 1990 - November 2006 in total by country and counties,
- rate of categories of operations in total operations/country -**

Counties	Total of registered operations		out of which :									
			Registered companies		Changes in statutory documents		out of which :				Strike off companies	
	of liquidation, dissolution						out of which :					
	No.	%	No.	%	No.	%	No.	%	No.	%	No.	%
0	1	2	3	4	5	6	7	8	9	10	11	12
Total ROMÂNIA	7600495	100,0	1541986	100,0	5603953	100,0	9911	100,0	165854	100,0	454556	100,0
ALBA	103613	1,4	23996	1,6	75491	1,3	371	3,7	3596	2,2	4126	0,9
ARAD	169062	2,2	37684	2,4	122262	2,2	369	3,7	2974	1,8	9116	2,0
ARGES	179467	2,4	39779	2,6	131467	2,3	197	2,0	4219	2,5	8221	1,8
BACAU	178944	2,4	39081	2,5	129021	2,3	1003	10,1	5280	3,2	10842	2,4
BIHOR	233554	3,1	45678	3,0	174710	3,1	303	3,1	4598	2,8	13166	2,9
BISTRITA-NASAUD	93903	1,2	18830	1,2	69433	1,2	72	0,7	1120	0,7	5640	1,2
BOTOSANI	70707	0,9	19117	1,2	47080	0,8	66	0,7	1563	0,9	4510	1,0
BRASOV	250947	3,3	47915	3,1	192786	3,4	149	1,5	4892	2,9	10246	2,3
BRAILA	96990	1,3	21491	1,4	72406	1,3	61	0,6	2540	1,5	3093	0,7
BUZAU	143838	1,9	28473	1,8	105717	1,9	146	1,5	2109	1,3	9648	2,1
CARAS-SEVERIN	97685	1,3	19086	1,2	70722	1,3	41	0,4	1922	1,2	7877	1,7
CALARASI	64671	0,9	15657	1,0	45264	0,8	79	0,8			3750	0,8
CLUJ	330721	4,4	70294	4,6	251800	4,5	197	2,0			8627	1,9
CONSTANTA	330228	4,3	64978	4,2	241326	4,3	926	9,3	10621	6,4	23924	5,3
COVASNA	69592	0,9	13190	0,9	52356	0,9	18	0,2	1175	0,7	4046	0,9
DAMBOVITA	116739	1,5	28834	1,9	75595	1,3	98	1,0	2951	1,8	12310	2,7
DOLJ	196220	2,6	41054	2,7	143933	2,6	215	2,2	5633	3,4	11233	2,5
GALATI	213353	2,8	36737	2,4	163395	2,9	125	1,3	5370	3,2	13221	2,9
GIURGIU	52940	0,7	12457	0,8	35892	0,6	47	0,5			4591	1,0
GORJ	102578	1,3	18573	1,2	78457	1,4	48	0,5	2667	1,6	5548	1,2
HARGHITA	109635	1,4	23251	1,5	82744	1,5	51	0,5			3640	0,8
HUNEDOARA	145615	1,9	31956	2,1	104323	1,9	126	1,3	2944	1,8	9336	2,1
IALOMITA	72925	1,0	14579	0,9	53325	1,0	78	0,8	1586	1,0	5021	1,1
IASI	258331	3,4	47185	3,1	200667	3,6	597	6,0	4224	2,5	10479	2,3
MARAMURES	155619	2,0	39820	2,6	106937	1,9	159	1,6	2924	1,8	8862	1,9
MEHEDINTI	80540	1,1	17663	1,1	55247	1,0	55	0,6	3085	1,9	7630	1,7
MURES	188863	2,5	38906	2,5	138572	2,5	83	0,8	2942	1,8	11385	2,5
NEAMT	161180	2,1	34319	2,2	113758	2,0	304	3,1	2435	1,5	13103	2,9
OLT	100888	1,3	22157	1,4	70203	1,3	21	0,2	2033	1,2	8528	1,9
PRAHOVA	264918	3,5	50832	3,3	201276	3,6	274	2,8	3934	2,4	12810	2,8
SALAJ	63066	0,8	14790	1,0	44286	0,8	29	0,3	683	0,4	3990	0,9
SATU MARE	123468	1,6	25830	1,7	88391	1,6	26	0,3	2934	1,8	9247	2,0
SIBIU	165838	2,2	29689	1,9	129605	2,3	31	0,3	2583	1,6	6544	1,4
SUCEAVA	184964	2,4	39408	2,6	130658	2,3	29	0,3	2387	1,4	14898	3,3
TELEORMAN	84848	1,1	17516	1,1	63399	1,1	49	0,5	1504	0,9	3933	0,9
TIMIS	284215	3,7	53326	3,5	216617	3,9	271	2,7	7273	4,4	14272	3,1
TULCEA	78617	1,0	16111	1,0	57681	1,0	149	1,5	1002	0,6	4825	1,1
VASLUI	88519	1,2	19978	1,3	60560	1,1	197	2,0	1384	0,8	7981	1,8
VALCEA	121750	1,6	25741	1,7	88378	1,6	138	1,4	1888	1,1	7631	1,7
VRANCEA	96368	1,3	19188	1,2	73475	1,3	51	0,5	1594	1,0	3705	0,8
MUN. BUCURESTI	1575818	20,7	292890	19,0	1175888	21,0	2641	26,6	51406	31,0	107040	23,5
ILFOV	98758	1,3	23947	1,6	68850	1,2	21	0,2	1879	1,1	5961	1,3

Table no. 2

**Operations registered in the Trade Register, by categories
during the period of December 1990 - November 2006, in total by country and counties,
- rate of categories of operations in total operations/country -**

Counties	Total of registered operations		out of which :									
			Registered companies		Changes in statutory documents		out of which :				Strike off companies	
	of liquidation, dissolution						out of which :					
	No.	%	No.	%	No.	%	No.	%	No.	%	No.	%
0	1	2	3	4	5	6	7	8	9	10	11	12
Total ROMÂNIA	7600495	100,0	1541986	20,3	5603953	73,7	9911	0,1	165854	2,2	454556	6,0
ALBA	103613	100,0	23996	23,2	75491	72,9	371	0,4	3596	3,5	4126	4,0
ARAD	169062	100,0	37684	22,3	122262	72,3	369	0,2	2974	1,8	9116	5,4
ARGES	179467	100,0	39779	22,2	131467	73,3	197	0,1	4219	2,4	8221	4,6
BACAU	178944	100,0	39081	21,8	129021	72,1	1003	0,6	5280	3,0	10842	6,1
BIHOR	233554	100,0	45678	19,6	174710	74,8	303	0,1	4598	2,0	13166	5,6
BISTRITA-NASAUD	93903	100,0	18830	20,1	69433	73,9	72	0,1	1120	1,2	5640	6,0
BOTOSANI	70707	100,0	19117	27,0	47080	66,6	66	0,1	1563	2,2	4510	6,4
BRASOV	250947	100,0	47915	19,1	192786	76,8	149	0,1	4892	1,9	10246	4,1
BRAILA	96990	100,0	21491	22,2	72406	74,7	61	0,1	2540	2,6	3093	3,2
BUZAU	143838	100,0	28473	19,8	105717	73,5	146	0,1	2109	1,5	9648	6,7
CARAS-SEVERIN	97685	100,0	19086	19,5	70722	72,4	41	0,0	1922	2,0	7877	8,1
CALARASI	64671	100,0	15657	24,2	45264	70,0	79	0,1			3750	5,8
CLUJ	330721	100,0	70294	21,3	251800	76,1	197	0,1			8627	2,6
CONSTANTA	330228	100,0	64978	19,7	241326	73,1	926	0,3	10621	3,2	23924	7,2
COVASNA	69592	100,0	13190	19,0	52356	75,2	18	0,0	1175	1,7	4046	5,8
DAMBOVITA	116739	100,0	28834	24,7	75595	64,8	98	0,1	2951	2,5	12310	10,5
DOLJ	196220	100,0	41054	20,9	143933	73,4	215	0,1	5633	2,9	11233	5,7
GALATI	213353	100,0	36737	17,2	163395	76,6	125	0,1	5370	2,5	13221	6,2
GIURGIU	52940	100,0	12457	23,5	35892	67,8	47	0,1			4591	8,7
GORJ	102578	100,0	18573	18,1	78457	76,5	48	0,0	2667	2,6	5548	5,4
HARGHITA	109635	100,0	23251	21,2	82744	75,5	51	0,0			3640	3,3
HUNEDOARA	145615	100,0	31956	21,9	104323	71,6	126	0,1	2944	2,0	9336	6,4
IALOMITA	72925	100,0	14579	20,0	53325	73,1	78	0,1	1586	2,2	5021	6,9
IASI	258331	100,0	47185	18,3	200667	77,7	597	0,2	4224	1,6	10479	4,1
MARAMURES	155619	100,0	39820	25,6	106937	68,7	159	0,1	2924	1,9	8862	5,7
MEHEDINTI	80540	100,0	17663	21,9	55247	68,6	55	0,1	3085	3,8	7630	9,5
MURES	188863	100,0	38906	20,6	138572	73,4	83	0,0	2942	1,6	11385	6,0
NEAMT	161180	100,0	34319	21,3	113758	70,6	304	0,2	2435	1,5	13103	8,1
OLT	100888	100,0	22157	22,0	70203	69,6	21	0,0	2033	2,0	8528	8,5
PRAHOVA	264918	100,0	50832	19,2	201276	76,0	274	0,1	3934	1,5	12810	4,8
SALAJ	63066	100,0	14790	23,5	44286	70,2	29	0,0	683	1,1	3990	6,3
SATU MARE	123468	100,0	25830	20,9	88391	71,6	26	0,0	2934	2,4	9247	7,5
SIBIU	165838	100,0	29689	17,9	129605	78,2	31	0,0	2583	1,6	6544	3,9
SUCEAVA	184964	100,0	39408	21,3	130658	70,6	29	0,0	2387	1,3	14898	8,1
TELEORMAN	84848	100,0	17516	20,6	63399	74,7	49	0,1	1504	1,8	3933	4,6
TIMIS	284215	100,0	53326	18,8	216617	76,2	271	0,1	7273	2,6	14272	5,0
TULCEA	78617	100,0	16111	20,5	57681	73,4	149	0,2	1002	1,3	4825	6,1
VASLUI	88519	100,0	19978	22,6	60560	68,4	197	0,2	1384	1,6	7981	9,0
VALCEA	121750	100,0	25741	21,1	88378	72,6	138	0,1	1888	1,6	7631	6,3
VRANCEA	96368	100,0	19188	19,9	73475	76,2	51	0,1	1594	1,7	3705	3,8
MUN. BUCURESTI	1575818	100,0	292890	18,6	1175888	74,6	2641	0,2	51406	3,3	107040	6,8
ILFOV	98758	100,0	23947	24,2	68850	69,7	21	0,0	1879	1,9	5961	6,0

*) according to the effect of Law No. 314/2001, art.1 și art. 6

*** Less than 0,01%

Table no.3

**Number and structure of incorporations in the Trade Register, by years,
November 2006**

Period (year, month)	Registered companies		Percentage	
	No.		%	%
0	1	2	3	
Total, 31 February 2006, out of which	1541986	92,14		
Year 1990	81	0,01		
Year 1991	95840	6,22		
Year 1992	137456	8,91		
Year 1993	117078	7,59		
Year 1994	137445	8,91		
Year 1995	65479	4,25		
Year 1996	62089	4,03		
Year 1997	55663	3,61		
Year 1998	63878	4,14		
Year 1999	57197	3,71		
Year 2000	57291	3,72		
Year 2001	61265	3,97		
Year 2002	84780	5,50		
Year 2003	123582	8,01		
Year 2004	144284	9,36		
Year 2005	157375	10,21		
Year 2006 (I - XII) out of which :	121203			108,4
January	8797			7,3
February	12605			10,4
March	14410			11,9
April	10806			8,9
May	10051			8,3
June	12109			10,0
July	10289			8,5
August	10130			8,4
September	10130			8,36
October	9158			7,56
November	10832			8,94

Note: Column 2 reveals the annual structure of incorporations; column 3 reveals the structure by months during the current year.

*** Less than 0,01%

Diagram no.1

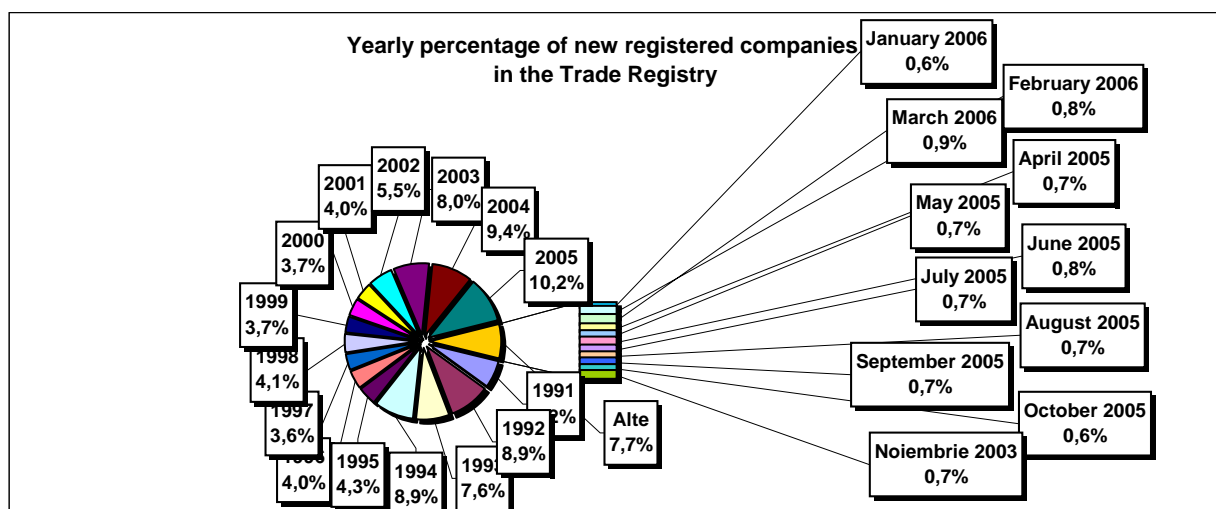


Table no. 4

The number of incorporations in the Trade Register, by counties and sources of capital, in the period December 1990 - November 2006

Counties	Total		out of which:					Ranking by: *	
			Private capital			State majority capital			Mixed capital (state+private)
			out of which:			out of which:			
			PF+AF	Companies	OC	RA	Companies		Companies
No.	%	No.	No.	No.	No.	No.	No.		
0	1	2	3	4	5	6	7	8	9
Total ROMÂNIA	1541986	100,0	395720	1128604	5394	1335	2361	8572	X
ALBA	23996	1,6	8259	15342	141	37	47	170	10
ARAD	37685	2,4	14423	22706	157	26	40	333	19
ARGES	39779	2,6	12914	26487	168	29	29	152	2
BACAU	39081	2,5	13074	25549	158	35	42	223	38
BIHOR	45678	3,0	9982	35143	146	37	62	308	6
BISTRITA-NASAUD	18830	1,2	6761	11814	98	19	29	109	42
BOTOSANI	19117	1,2	8693	9990	122	21	172	119	5
BRASOV	47915	3,1	9827	37673	114	44	87	170	31
BRAILA	21491	1,4	5358	15801	96	28	43	165	32
BUZAU	28473	1,8	8275	19857	142	26	42	131	30
CARAS-SEVERIN	19086	1,2	6656	12093	102	33	65	137	17
CALARASI	15657	1,0	4592	10789	86	18	77	95	29
CLUJ	70294	4,6	17678	52113	150	52	40	261	14
CONSTANTA	64978	4,2	12453	51682	203	51	49	540	16
COVASNA	13190	0,9	4435	8523	67	24	32	109	33
DAMBOVITA	28834	1,9	13298	15145	134	29	75	153	41
DOLJ	41054	2,7	8196	32397	162	40	57	202	28
GALATI	36737	2,4	7161	29217	135	30	51	143	40
GIURGIU	12457	0,8	2972	9164	80	22	109	110	1
GORJ	18573	1,2	4370	13786	184	50	83	100	4
HARGHITA	23251	1,5	9065	13805	86	23	43	229	34
HUNEDOARA	31956	2,1	8439	23025	81	37	92	282	15
IALOMITA	14579	0,9	5608	8745	74	15	46	91	22
IASI	47185	3,1	12867	33706	164	34	70	344	36
MARAMURES	39820	2,6	16270	23229	122	37	39	123	20
MEHEDINTI	17663	1,1	5589	11849	82	19	26	98	23
MURES	38906	2,5	14444	24075	156	30	34	167	3
NEAMT	34319	2,2	12681	21253	161	29	30	165	11
OLT	22157	1,4	8812	12971	161	26	64	123	7
PRAHOVA	50832	3,3	15547	34718	177	50	69	271	12
SALAJ	14790	1,0	5774	8799	107	19	28	63	27
SATU MARE	25830	1,7	8367	17180	88	19	42	134	39
SIBIU	29689	1,9	7166	22106	119	32	108	158	35
SUCEAVA	39408	2,6	18913	19979	202	30	64	220	26
TELEORMAN	17516	1,1	6025	11092	152	21	44	182	9
TIMIS	53326	3,5	8416	44316	140	38	68	348	8
TULCEA	16111	1,0	5521	10252	66	18	42	212	37
VASLUI	19978	1,3	9736	9941	109	16	41	135	24
VALCEA	25741	1,7	10175	15208	168	40	37	113	18
VRANCEA	19188	1,2	5850	13077	104	16	27	114	21
MUN. BUCURESTI	292889	19,0	17938	273487	138	115	103	1108	25
ILFOV	23947	1,6	3140	20520	92	20	13	162	13

*) The total number of incorporations (col 1)

*** Less than 0,01%

Table no. 5

**The number of incorporations in the Trade Register,
by counties and categories, during the period of
December 1990 - November 2006**

County	Total		out of which:						RA	OC
			PF+AF	companies: 1139537						
	SNC	SCS		SRL	SA	No.	No.			
	No.	%	No.	No.	No.			No.	No.	No.
0	1	2	3	4	5	6	7	8	9	
Total ROMÂNIA	1541986	100,0	395720	32649	1562	1073665	31655	1335	5394	
ALBA	23996	1,6	8259	890	11	14113	545	37	141	
ARAD	37684	2,4	14423	53	11	22350	663	26	157	
ARGES	39779	2,6	12914	107	14	25744	803	29	168	
BACAU	39081	2,5	13074	1299	4	23792	718	35	158	
BIHOR	45678	3,0	9982	125	47	34458	883	37	146	
BISTRITA-NASAUD	18830	1,2	6761	146	21	11376	409	19	98	
BOTOSANI	19117	1,2	8693	468	1	9364	448	21	122	
BRASOV	47915	3,1	9827	239	20	36841	830	44	114	
BRAILA	21491	1,4	5358	376	12	15111	510	28	96	
BUZAU	28473	1,8	8275	3747	46	15679	558	26	142	
CARAS-SEVERIN	19086	1,2	6656	117	8	11710	460	33	102	
CALARASI	15657	1,0	4592	609	3	10002	347	18	86	
CLUJ	70294	4,6	17678	2111	18	49062	1223	52	150	
CONSTANTA	64978	4,2	12453	311	23	50485	1452	51	203	
COVASNA	13190	0,9	4435	148	4	8216	296	24	67	
DAMBOVITA	28834	1,9	13298	60	8	14820	485	29	134	
DOLJ	41054	2,7	8196	1560	8	30231	857	40	162	
GALATI	36737	2,4	7161	1574	6	27006	825	30	135	
GIURGIU	12457	0,8	2972	35	8	9021	319	22	80	
GORJ	18573	1,2	4370	29	1	13457	482	50	184	
HARGHITA	23251	1,5	9065	62	6	13527	482	23	86	
HUNEDOARA	31956	2,1	8439	1166	98	21476	659	37	81	
IALOMITA	14579	0,9	5608	266	11	8266	339	15	74	
IASI	47185	3,1	12867	506	111	32519	982	34	164	
MARAMURES	39820	2,6	16270	1926	23	20861	580	37	122	
MEHEDINTI	17663	1,1	5589	427	3	11220	323	19	82	
MURES	38906	2,5	14444	37	34	23557	648	30	156	
NEAMT	34319	2,2	12681	3293	30	17468	657	29	161	
OLT	22157	1,4	8812	1611	1	11065	481	26	161	
PRAHOVA	50832	3,3	15547	3122	14	31053	869	50	177	
SALAJ	14790	1,0	5774	600	4	8000	286	19	107	
SATU MARE	25830	1,7	8367	283	5	16603	465	19	88	
SIBIU	29689	1,9	7166	776	48	20909	639	32	119	
SUCEAVA	39408	2,6	18913	438	8	19241	576	30	202	
TELEORMAN	17516	1,1	6025	272	399	10244	403	21	152	
TIMIS	53326	3,5	8416	607	27	42872	1226	38	140	
TULCEA	16111	1,0	5521	1363	114	8561	468	18	66	
VASLUI	19978	1,3	9736	90	11	9617	399	16	109	
VALCEA	25741	1,7	10175	364	6	14513	475	40	168	
VRANCEA	19188	1,2	5850	356	10	12410	442	16	104	
MUN. BUCURESTI	292890	19,0	17938	1031	295	266805	6567	115	138	
ILFOV	23947	1,6	3140	49	30	20040	576	20	92	

Table no. 6

**The number of incorporations in the Trade Register, by field of activity*
during the period of December 1990 - November 2006**

CAEN segment	Field of activity	Total		out of which:						
				PF+AF	companies: 1139537				RA	OC
					SNC	SCS	SRL	SA		
					No.	No.	No.	No.		
0	1	2	3	4	5	6	7	8	9	10
	Total ROMÂNIA	1541986	100,0	395720	32649	1562	1073665	31655	1335	5394
1	Agriculture, hunting and related service activities	62392	4,0	15181	2024	44	41194	3780	52	117
2	Forestry, logging and related service activities	8134	0,5	1045	152	3	6617	222	87	8
5	Fishing, fish farming and related service activities	2998	0,2	1721	17	3	1204	53		
10	Mining of coal and lignite; extraction of peat	114	0,0	2			76	32	4	
11	Extraction of crude petroleum and natural gas; service activities incidental to oil and gas extraction, excluding surveying	337	0,0	8	1		158	124	46	
12	Mining of uranium and thorium ores	133	0,0	32			95	6		
13	Mining of metal ores	533	0,0	163			307	55	8	
14	Other mining and quarrying	1563	0,1	109	9	1	1274	167	2	1
15	Manufacture of food products and beverages	73124	4,7	14314	3260	149	53293	1855	5	248
16	Manufacture of tobacco products	287	0,0	47			208	31	1	
17	Manufacture of textiles	11676	0,8	2361	556	16	8192	406		145
18	Manufacture of wearing apparel; dressing and dyeing of fur	20785	1,3	4723	875	38	14486	357	1	305
19	Tanning and dressing of leather; manufacture of luggage, handbags, saddlery, harness and footwear	5245	0,3	904	112	6	4048	123	1	51
20	Manufacture of wood and of products of wood and cork, except furniture; manufacture of articles of straw and plaiting materials	24832	1,6	8795	575	29	14884	498	9	42
21	Manufacture of pulp, paper and paper products	1774	0,1	122	21	1	1519	98		13
22	Publishing, printing and reproduction of recorded media	11714	0,8	946	317	21	10003	403	14	10
23	Manufacture of coke, refined petroleum products and nuclear fuel	259	0,0	24			199	34	2	
24	Manufacture of chemicals and chemical products	3677	0,2	119	89	1	3079	377	6	6
25	Manufacture of rubber and plastic products	6137	0,4	564	313	7	4971	257		24
26	Manufacture of other non-metallic mineral products	9000	0,6	2744	212	6	5635	384	5	14
27	Manufacture of basic metals	2420	0,2	168	39	3	1993	207	3	7
28	Manufacture of fabricated metal products, except machinery and equipment	16814	1,1	4074	361	23	11562	721	11	62
29	Manufacture of machinery and equipment n.e.c.	3770	0,2	106	44	7	3169	420	19	5
30	Manufacture of office machinery and computers	1767	0,1	15	25	4	1643	80		
31	Manufacture of electrical machinery and apparatus n.e.c.	1927	0,1	111	44	6	1616	144		6
32	Manufacture of radio, television and communication equipment and apparatus	858	0,1	57	14	4	709	73		1
33	Manufacture of medical, precision and optical instruments, watches and clocks	2563	0,2	613	17	2	1824	103		4
34	Manufacture of motor vehicles, trailers and semi-trailers	906	0,1	30	31	3	715	125		2
35	Manufacture of other transport equipment	1887	0,1	280	86	7	1318	121	73	2
36	Manufacture of furniture; manufacturing n.e.c.	15310	1,0	4363	284	16	10148	336	5	158
37	Recycling	4830	0,3	425	51	5	4176	172		1
40	Electricity, gas, steam and hot water supply	2913	0,2	835	3	1	1472	514	88	
41	Collection, purification and distribution of water	3545	0,2	1624	2		1649	197	73	
45	Construction	90306	5,9	24157	611	42	62937	2429	53	77

Table no. 6
(continuing)

**The number of incorporations in the Trade Register, by field of activity*
and categories, during the period of December 1990 - November 2006**

CAEN segment	Field of activity	Total		out of which:						
				PF+AF	companies: 1139537				RA	OC
					SNC	SCS	SRL	SA		
0	1	No.	%	No.	No.	No.	No.	No.	No.	
		2	3	4	5	6	7	8	9	10
	Total ROMÂNIA	1541986	100,0	395720	32649	1562	1073665	31655	1335	5394
50	Sale, maintenance and repair of motor vehicles and motorcycles; retail sale of automotive fuel	53678	3,5	8459	1244		42869	1024	6	42
51	Wholesale trade and commission trade, except of motor vehicles and motorcycles	200821	13,0	17654	4524	150	174886	3290	35	282
52	Retail trade, except of motor vehicles and motorcycles; repair of personal and household goods	496857	32,2	176017	11914	557	303493	2488	5	2382
55	Hotels and restaurants	59621	3,9	14213	1635	126	42692	787	73	95
60	Land transport; transport via pipelines	79962	5,2	35565	844	37	42418	1055	33	10
61	Water transport	848	0,1	157	82	8	466	64	70	1
62	Air transport	298	0,0	18			222	48	10	
63	Supporting and auxiliary transport activities; activities of travel agencies	10219	0,7	663	220	14	8776	439	96	11
64	Post and telecommunications	7002	0,5	603	11	1	6075	298	11	3
65	Financial intermediation, except insurance and pension funding	6259	0,4	143	15		2783	2283	2	1033
66	Insurance and pension funding, except compulsory social security	2021	0,1	611	1		512	896		1
67	Activities auxiliary to financial intermediation	6682	0,4	1263	7	2	5118	284		8
70	Real estate activities	21750	1,4	730	28	9	20367	592	17	7
71	Renting of machinery and equipment without operator and of personal and household goods	3338	0,2	651	116	8	2397	95	70	1
72	Computer and related activities	22714	1,5	4400	120	13	17793	383	2	3
73	Research and development	1695	0,1	244	11	2	1222	171	43	2
74	Other business activities	106802	6,9	22007	792	74	82110	1652	106	60
75	Public administration and defence; compulsory social security	358	0,0	89	5		216	26	21	1
80	Education	6480	0,4	3200	62	5	3148	65		
85	Health and social work	16037	1,0	2114	233	15	13588	83	3	1
90	Sewage and refuse disposal, sanitation and similar activities	886	0,1	93	13	2	653	105	18	
91	Activities of membership organizations n.e.c.	212	0,0	93	1		100	15		3
92	Recreational, cultural and sporting activities	16227	1,1	4313	202	14	11318	298	70	12
93	Other service activities	25782	1,7	11069	418	42	13745	305	76	126
95	Activities of households as employers of domestic staff	830	0,1	515	6	1	304	3		1
96	Extra-territorial organizations and bodies	10	0,0	10						

Table no. 7

**Operations carried on with the Trade Registers,
by counties and categories,
in November 2006**

County	Total of operations carried on		out of which:							
			New incorporations		Changes in statutory documents		out of which: of liquidation, dissolution		Strike off companies	
	No.	%	No.	%	No.	%	No.	%	No.	%
0	1	2	3	4	5	6	7	8	9	10
Total ROMÂNIA	102995	100,0	12016	11,7	85158	82,7	11193	10,9	5821	5,7
ALBA	1315	100,0	166	12,6	1107	84,2	53	4,0	42	3,2
ARAD	2238	100,0	349	15,6	1752	78,3	24	1,1	137	6,1
ARGES	2401	100,0	319	13,3	1934	80,5	27	1,1	148	6,2
BACAU	1831	100,0	237	12,9	1520	83,0	4	0,2	74	4,0
BIHOR	3116	100,0	478	15,3	2401	77,1	255	8,2	237	7,6
BISTRITA-NASAUD	818	100,0	105	12,8	653	79,8	420	51,3	60	7,3
BOTOSANI	708	100,0	111	15,7	505	71,3	100	14,1	92	13,0
BRASOV	3373	100,0	410	12,2	2863	84,9	371	11,0	100	3,0
BRAILA	1618	100,0	129	8,0	1260	77,9	7	0,4	229	14,2
BUZAU	1663	100,0	186	11,2	1402	84,3	9	0,5	75	4,5
CARAS-SEVERIN	750	100,0	151	20,1	582	77,6	658	87,7	17	2,3
CALARASI	857	100,0	108	12,6	700	81,7	395	46,1	49	5,7
CLUJ	5537	100,0	585	10,6	4757	85,9	29	0,5	195	3,5
CONSTANTA	4420	100,0	419	9,5	3877	87,7	1578	35,7	124	2,8
COVASNA	616	100,0	100	16,2	495	80,4	110	17,9	21	3,4
DAMBOVITA	1057	100,0	184	17,4	785	74,3	7	0,7	88	8,3
DOLJ	1708	100,0	301	17,6	1370	80,2	550	32,2	37	2,2
GALATI	1582	100,0	253	16,0	1272	80,4	32	2,0	57	3,6
GIURGIU	646	100,0	89	13,8	544	84,2	28	4,3	13	2,0
GORJ	962	100,0	112	11,6	788	81,9	900	93,6	62	6,4
HARGHITA	1289	100,0	246	19,1	959	74,4	372	28,9	84	6,5
HUNEDOARA	4727	100,0	275	5,8	4406	93,2	242	5,1	46	1,0
IALOMITA	790	100,0	99	12,5	632	80,0	17	2,2	59	7,5
IASI	3923	100,0	404	10,3	3460	88,2	6	0,2	59	1,5
MARAMURES	2521	100,0	261	10,4	2151	85,3	319	12,7	109	4,3
MEHEDINTI	860	100,0	87	10,1	619	72,0	204	23,7	154	17,9
MURES	2967	100,0	301	10,1	2041	68,8	340	11,5	625	21,1
NEAMT	2069	100,0	210	10,1	1621	78,3	680	32,9	238	11,5
OLT	817	100,0	124	15,2	661	80,9	219	26,8	32	3,9
PRAHOVA	3478	100,0	424	12,2	2904	83,5	79	2,3	150	4,3
SALAJ	1071	100,0	127	11,9	882	82,4	29	2,7	62	5,8
SATU MARE	1276	100,0	183	14,3	1067	83,6	147	11,5	26	2,0
SIBIU	3009	100,0	304	10,1	2621	87,1	16	0,5	84	2,8
SUCEAVA	3017	100,0	264	8,8	2377	78,8	1103	36,6	376	12,5
TELEORMAN	662	100,0	112	16,9	535	80,8	104	15,7	15	2,3
TIMIS	4276	100,0	506	11,8	3707	86,7	570	13,3	63	1,5
TULCEA	576	100,0	96	16,7	431	74,8	5	0,9	49	8,5
VASLUI	779	100,0	131	16,8	605	77,7	76	9,8	43	5,5
VALCEA	1286	100,0	181	14,1	972	75,6	63	4,9	133	10,3
VRANCEA	793	100,0	130	16,4	619	78,1	378	47,7	44	5,5
MUN. BUCURESTI	23775	100,0	2434	10,2	19864	83,5	663	2,8	1477	6,2
ILFOV	1818	100,0	325	17,9	1457	80,1	4	0,2	36	2,0

*) by effect of implementation of Law no. 314/2001, art.1 and art. 6

*** Less than 0,01%

Table no. 8

**The number of incorporations in the Trade Register,
by counties and sources of capital,
in November 2006**

County	Total		out of which:					Rnking by: *	
			Private capital			State majority capital			Mixed capital (state+priva)
			out of which:			out of which:			
			PF+AF	Companies	OC	RA	Companie s		Companie s
No.	%	No.	No.	No.	No.	No.	No.		
0	1	2	3	4	5	6	7	8	9
Total ROMÂNIA	12016	100,0	2707	9308				1	X
ALBA	166	1,4	54	112					16
ARAD	349	2,9	112	237					17
ARGES	319	2,7	75	244					42
BACAU	237	2,0	52	185					3
BIHOR	478	4,0	144	333				1	14
BISTRITA-NASAUD	105	0,9	27	78					20
BOTOSANI	111	0,9	58	53					10
BRASOV	410	3,4	92	318					4
BRAILA	129	1,1	34	95					27
BUZAU	186	1,5	43	143					6
CARAS-SEVERIN	151	1,3	32	119					29
CALARASI	108	0,9	27	81					19
CLUJ	585	4,9	157	428					18
CONSTANTA	419	3,5	58	361					12
COVASNA	100	0,8	39	61					35
DAMBOVITA	184	1,5	56	128					23
DOLJ	301	2,5	71	230					22
GALATI	253	2,1	47	206					9
GIURGIU	89	0,7	19	70					1
GORJ	112	0,9	25	87					7
HARGHITA	246	2,0	124	122					25
HUNEDOARA	275	2,3	70	205					13
IALOMITA	99	0,8	32	67					38
IASI	404	3,4	97	307					34
MARAMURES	261	2,2	51	210					37
MEHEDINTI	87	0,7	33	54					11
MURES	301	2,5	92	209					2
NEAMT	210	1,7	57	153					24
OLT	124	1,0	26	98					36
PRAHOVA	424	3,5	138	286					28
SALAJ	127	1,1	33	94					15
SATU MARE	183	1,5	52	131					26
SIBIU	304	2,5	71	233					40
SUCEAVA	264	2,2	78	186					30
TELEORMAN	112	0,9	28	84					8
TIMIS	506	4,2	79	427					32
TULCEA	96	0,8	37	59					31
VASLUI	131	1,1	34	97					33
VALCEA	181	1,5	57	124					5
VRANCEA	130	1,1	33	97					39
MUN. BUCURESTI	2434	20,3	219	2215					21
ILFOV	325	2,7	44	281					41

*) The total number of incorporations (col 1)

*** Less than 0,01%

Table no.9

**The number of incorporations in the Trade Register,
by counties and category
in November 2006**

County	Total		out of which:						RA	OC
			PF+AF	companies: 9309						
	No.	%		No.	SNC	SCS	SRL	SA	No.	No.
			No.		No.	No.	No.			
0	1	2	3	4	5	6	7	8	9	
Total ROMÂNIA	12016	100,0	2707	1		9247	61			
ALBA	166	1,4	54			112				
ARAD	349	2,9	112			237				
ARGES	319	2,7	75			243	1			
BACAU	237	2,0	52			183	2			
BIHOR	478	4,0	144			332	2			
BISTRITA-NASAUD	105	0,9	27			77	1			
BOTOSANI	111	0,9	58			51	2			
BRASOV	410	3,4	92			318				
BRAILA	129	1,1	34			95				
BUZAU	186	1,5	43			143				
CARAS-SEVERIN	151	1,3	32			119				
CALARASI	108	0,9	27			81				
CLUJ	585	4,9	157			425	3			
CONSTANTA	419	3,5	58			360	1			
COVASNA	100	0,8	39			61				
DAMBOVITA	184	1,5	56			128				
DOLJ	301	2,5	71			229	1			
GALATI	253	2,1	47			206				
GIURGIU	89	0,7	19			69	1			
GORJ	112	0,9	25			86	1			
HARGHITA	246	2,0	124			122				
HUNEDOARA	275	2,3	70			203	2			
IALOMITA	99	0,8	32			67				
IASI	404	3,4	97			305	2			
MARAMURES	261	2,2	51			209	1			
MEHEDINTI	87	0,7	33			54				
MURES	301	2,5	92			206	3			
NEAMT	210	1,7	57			152	1			
OLT	124	1,0	26			98				
PRAHOVA	424	3,5	138			285	1			
SALAJ	127	1,1	33			89	5			
SATU MARE	183	1,5	52			130	1			
SIBIU	304	2,5	71	1		229	3			
SUCEAVA	264	2,2	78			186				
TELEORMAN	112	0,9	28			84				
TIMIS	506	4,2	79			421	6			
TULCEA	96	0,8	37			59				
VASLUI	131	1,1	34			96	1			
VALCEA	181	1,5	57			122	2			
VRANCEA	130	1,1	33			96	1			
MUN. BUCURESTI	2434	20,3	219			2200	15			
ILFOV	325	2,7	44			279	2			

Table no. 10

**The number of incorporations in the Trade Register, by field of activity*
and categories in November 2006**

CAEN segment	Field of activity	Total		out of which:						RA	OC
				PF+AF	companies: 9309						
		SNC	SCS		SRL	SA					
		No.	No.		No.	No.	No.	No.			
0	1	2	3	4	5	6	7	8	9	10	
	Total ROMÂNIA	12016	100,0	2707	1		9247	61			
1	Agriculture, hunting and related service activities	307	2,6	151			155	1			
2	Forestry, logging and related service activities	56	0,5	2			54				
5	Fishing, fish farming and related service activities	35	0,3	18			17				
10	Mining of coal and lignite; extraction of peat	1	0,0				1				
11	Extraction of crude petroleum and natural gas; service activities incidental to oil and gas extraction, excluding surveying	7	0,1	4			2	1			
12	Mining of uranium and thorium ores										
13	Mining of metal ores	2	0,0				2				
14	Other mining and quarrying	17	0,1				17				
15	Manufacture of food products and beverages	132	1,1	60			72				
16	Manufacture of tobacco products										
17	Manufacture of textiles	39	0,3	9			30				
18	Manufacture of wearing apparel; dressing and dyeing of fur	87	0,7	31			55	1			
19	Tanning and dressing of leather; manufacture of luggage, handbags, saddlery, harness and footwear	16	0,1	1			15				
20	Manufacture of wood and of products of wood and cork, except furniture; manufacture of articles of straw and plaiting materials	117	1,0	46			71				
21	Manufacture of pulp, paper and paper products	11	0,1				11				
22	Publishing, printing and reproduction of recorded media	73	0,6	2			70	1			
23	Manufacture of coke, refined petroleum products and nuclear fuel	1	0,0				1				
24	Manufacture of chemicals and chemical products	21	0,2				21				
25	Manufacture of rubber and plastic products	46	0,4	2			44				
26	Manufacture of other non-metallic mineral products	54	0,4	16			38				
27	Manufacture of basic metals	3	0,0				3				
28	Manufacture of fabricated metal products, except machinery and equipment	157	1,3	52			105				
29	Manufacture of machinery and equipment n.e.c.	18	0,1	1			17				
30	Manufacture of office machinery and computers	2	0,0				2				
31	Manufacture of electrical machinery and apparatus n.e.c.	11	0,1				11				
32	Manufacture of radio, television and communication equipment and apparatus	6	0,0				6				
33	Manufacture of medical, precision and optical instruments, watches and clocks	26	0,2	7			19				
34	Manufacture of motor vehicles, trailers and semi- trailers	3	0,0				2	1			
35	Manufacture of other transport equipment	13	0,1	1			12				
36	Manufacture of furniture; manufacturing n.e.c.	103	0,9	22			81				
37	Recycling	32	0,3	2			30				
40	Electricity, gas, steam and hot water supply	18	0,1	1			12	5			
41	Collection, purification and distribution of water	2	0,0	1				1			
45	Construction	1558	13,0	237			1317	4			

Table no. 10
(continuance)

The number of incorporations in the Trade Register, by field of activity*
and categories in November 2006

CAEN segment	Field of activity	Total		out of which:						
				PF+AF	companies: 9309				RA	OC
		No.	%		No.	SNC	SCS	SRL		
				No.		No.	No.	No.	No.	No.
0	1	2	3	4	5	6	7	8	9	10
	Total ROMÂNIA	12016	100,0	2707	1		9247	61		
50	Sale, maintenance and repair of motor vehicles and motorcycles; retail sale of automotive fuel	367	3,1	55			312			
51	Wholesale trade and commission trade, except of motor vehicles and motorcycles	1141	9,5	214			926	1		
52	Retail trade, except of motor vehicles and motorcycles; repair of personal and household goods	2267	18,9	695			1570	2		
55	Hotels and restaurants	480	4,0	72			407	1		
60	Land transport; transport via pipelines	757	6,3	162			595			
61	Water transport	2	0,0				2			
62	Air transport	3	0,0				3			
63	Supporting and auxiliary transport activities; activities of travel agencies	95	0,8	7			87	1		
64	Post and telecommunications	91	0,8	15			76			
65	Financial intermediation, except insurance and pension funding	54	0,4				30	24		
66	Insurance and pension funding, except compulsory social security	3	0,0				1	2		
67	Activities auxiliary to financial intermediation	82	0,7	3			79			
70	Real estate activities	659	5,5	7			645	7		
71	Renting of machinery and equipment without operator and of personal and household goods	56	0,5	4			50	2		
72	Computer and related activities	450	3,7	184	1		265			
73	Research and development	12	0,1	4			8			
74	Other business activities	1702	14,2	348			1350	4		
75	Public administration and defence; compulsory social security									
80	Education	75	0,6	12			63			
85	Health and social work	163	1,4	7			155	1		
90	Sewage and refuse disposal, sanitation and similar activities	12	0,1	2			10			
91	Activities of membership organizations n.e.c.	1	0,0	1						
92	Recreational, cultural and sporting activities	226	1,9	69			156	1		
93	Other service activities	328	2,7	166			162			
95	Activities of households as employers of domestic staff	16	0,1	14			2			
96	Extra-territorial organizations and bodies									

*)Field of activity declared when registered, according to CAEN classification

**Number of companies registered and the amount
of subscribed capital, by county in November 2006**

County	Total registered companies		Subscribed capital		Average subscribed capital on company
	No.	%	mii RON	%	mii RON
0	1	2	3	4	5
Total ROMÂNIA	9309	100,0	164182,7	100,0	17,7
ALBA	112	1,2	402,6	0,2	3,6
ARAD	237	2,5	1074,3	0,7	4,5
ARGES	244	2,6	13871,2	8,4	56,8
BACAU	185	2,0	1551,7	0,9	8,4
BIHOR	334	3,6	10098,3	6,2	30,2
BISTRITA-NASAUD	78	0,8	564,2	0,3	7,2
BOTOSANI	53	0,6	1706,4	1,0	32,8
BRASOV	318	3,4	2083,6	1,3	6,6
BRAILA	95	1,0	268,7	0,2	2,8
BUZAU	143	1,5	615,8	0,4	4,3
CARAS-SEVERIN	119	1,3	9151,8	5,6	76,9
CALARASI	81	0,9	27,9	0,0	0,3
CLUJ	428	4,6	708,8	0,4	1,7
CONSTANTA	361	3,9	390,4	0,2	1,1
COVASNA	61	0,7	56,0	0,0	0,9
DAMBOVITA	128	1,4	36,2	0,0	0,3
DOLJ	230	2,5	8024,0	4,9	34,9
GALATI	206	2,2	125,1	0,1	0,6
GIURGIU	70	0,8	40,7	0,0	0,6
GORJ	87	0,9	37,1	0,0	0,4
HARGHITA	122	1,3	290,8	0,2	2,4
HUNEDOARA	205	2,2	1141,6	0,7	5,6
IALOMITA	67	0,7	187,0	0,1	2,8
IASI	307	3,3	4790,0	2,9	15,8
MARAMURES	210	2,3	1349,4	0,8	6,5
MEHEDINTI	54	0,6	23,3	0,0	0,4
MURES	209	2,2	398,2	0,2	1,9
NEAMT	153	1,6	829,2	0,5	5,5
OLT	98	1,1	454,4	0,3	4,6
PRAHOVA	286	3,1	270,0	0,2	0,9
SALAJ	94	1,0	707,3	0,4	7,5
SATU MARE	131	1,4	129,2	0,1	1,0
SIBIU	233	2,5	621,9	0,4	2,7
SUCEAVA	186	2,0	99,9	0,1	0,5
TELEORMAN	84	0,9	62,1	0,0	0,7
TIMIS	427	4,6	14727,6	9,0	34,9
TULCEA	59	0,6	137,9	0,1	2,3
VASLUI	97	1,0	127,4	0,1	1,3
VALCEA	124	1,3	431,3	0,3	3,5
VRANCEA	97	1,0	185,7	0,1	1,9
MUN. BUCURESTI	2215	23,8	83642,4	50,9	38,0
ILFOV	281	3,0	2741,2	1,7	9,8

Note: The average does not include filials because according to the Law no.31/1990 they are not juridical persons

**** Less than 0,01%*

Table no. 12

**Number of registered companies and the amount
of subscribed capital by category,
in November 2006**

Company type	Total registered companies		Subscribed capital		Average subscribed capital on company
	No.	%	mii RON	%	mil. RON
0	1	2	3	4	5
Total ROMÂNIA	9309	100,0	164182,7	100,0	17,7
SNC	1	0,0	1,0	***	1,0
SCS					
SA	61	0,7	46511,3	28,3	1661,1
SRL	9247	99,3	117670,4	71,7	12,7
SCA					

Note: The average does not include filials because according to the Law no.31/1990 they are not juridical persons

*** Less than 0,01%

Diagram no.5

