



MINISTRY OF JUSTICE

THE NATIONAL TRADE REGISTER OFFICE

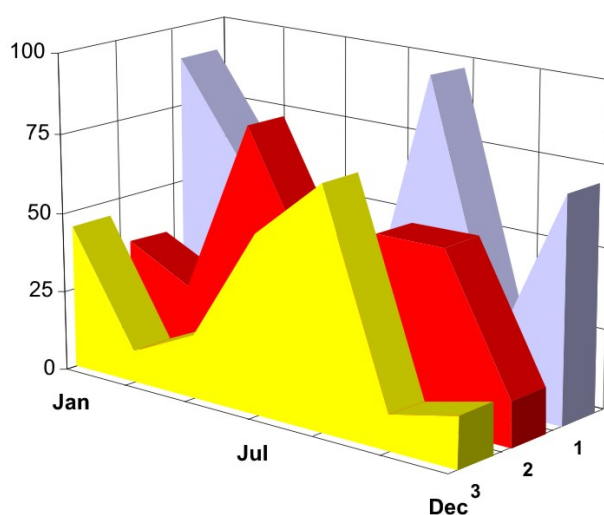
București, Bd. Unirii nr. 74, Bl. J3b, tronson II+III, sector 3; Telefon: +40 21 316.08.04, 316.08.10; Fax: +40 21 316.08.03 Cod poștal: 030837  
Website: [www.onrc.ro](http://www.onrc.ro); E-mail: [onrc@onrc.ro](mailto:onrc@onrc.ro); Cod de identificare Fiscală: 14942091; înregistrat ca operator date personale sub nr.1350

# PROCEEDINGS IN THE CENTRAL TRADE REGISTER

## STATISTICAL SYNTHESIS

OF

**RECORDS IN THE CENTRAL TRADE REGISTER  
- the 31<sup>th</sup> of October 2006 - provisional data -**



- ISSUE No. 179 -

**MINISTRY OF JUSTICE  
THE NATIONAL TRADE REGISTER OFFICE**

---

- Operations of incorporation of companies, changes in statutory documents and strike-off of companies are based on Law No.26/1990 reissued, Law No.31/1990, reissued, OUG No.76/2001, reissued and Methodology Norms No. P/608/1998.
  
- This paper presents the trend in operations registered in The Trade Register Office attached to the law court of Bucharest and in the Trade Register Offices attached to the law court in each county of Romania.
  
- Information recorded in the Central Trade Register concern operations compulsory by law to be registered in the trade registers within the 42 trade register offices attached to the law courts.

*• No part of the content of this publication, in original or in any modified format, September be reproduced, stored in a retrieval system, or transmitted, in any form or by any means, without the prior permission in writing of The Ministry of Justice – The National Trade Register Office.*

*• The content of this publication September be referred to in articles, studies, books, as supporting or explanatory data under the condition only, the source of the information to be clearly and precisely specified.*

<b>1</b>	<b>Explanatory Note</b>	<b>1</b>
<b>2.1</b>	<b>Data for December 1990 – October 2006</b>	<b>3</b>
	Table no.1 – Operations registered in the Trade Register, by categories during the period of December 1990 – October 2006, in total by country and counties, rate of categories of operations in total operations country	3
	Table no.1.a – Operations registered in the Trade Register, by categories during the period of December 1990 – October 2006, in total by country and counties, counties' rate in total country	4
	Table no. 3 – Number and structure of incorporations in the Trade Register, by years, during the period of December 1990- October 2006	5
	Table no.4 – The number of incorporations in the Trade Register, by counties and sources of capital, in the period December 1990 - October 2006	6
	Table no. 5 – The number of incorporations in the Trade Register, by counties and categories, during the period of December 1990 – October 2006	7
	Table no. 6 – The number of incorporations in the Trade Register, by field of activity and categories, during the period of December 1990 - October 2006	8
	<b>2.2 Data for October 2006</b>	<b>10</b>
	Table no. 7 – Operations carried on with the Trade Registers, by counties and categories, in October 2006	10
	Table no. 8 – The number of incorporations in the Trade Register, by counties and sources of capital, in October 2006	11
	Table no. 9 – The number of incorporations in the Trade Register, by counties and category in October 2006	12
	Table no. 10 –The number of incorporations in the Trade Register, by field of activity and categories in October 2006	13
	Table no. 11 – Number of companies registered and the amount of subscribed capital, by county in October 2006	15
	Table no. 12– Number of registered companies and the amount of subscribed capital by category, in October 2006	16
	Diagram no. 5 – Average subscribed capital on company in October 2006	16

## Explanatory Note

The Trade Register Office is set-up by Law No. 26/1990, reissued and modified by OUG No. 129/2002, became an active institution since December 1990 and is structured in two levels:

- the national level, represented by the National Trade Register Office organised under the Ministry of Justice
- the local level, represented by the 42 trade register offices attached to the law courts and co-ordinated by the National Trade Register Office

The categories of businessmen compulsory to register in the trade register are:

- natural persons tradesmen and family associations doing usually commercial acts, commercial companies, national companies, companies under state supervision, and co-operative organisations
- subsidiaries registered as commercial companies and legal persons following the legal proceedings of set-up, activity and incorporation according to the type of the legally set-up company.

### Usual Terms:

- incorporation – represents the registration of the company in the trade registry awarding the quality of legal person.

- other statutory documents – represent the official registration of the changes occurred in a company's life, such as: changes in headquarters' address, increase or decrease of the issued capital, merger, liquidation, strike-off, etc.

- strike-off – represents the removal of a company from the trade registry, due to dissolution and liquidation, being also the very moment the company loses its quality of legal person. Data also include the companies under the provisions of Law No. 314/2001.

- change of certificate – represents the obligation of companies set-up before OGU No. 76/2001 republished came in force, to request the incorporation certificate and fiscal registration certificate to be replaced with the new registration certificate containing the given unique registration code.

The ratio of these changes is being calculated as a proportion between the effective number of changes and the number of active companies due to operate the change.

- active company from the legal point of view – a company registered in the trade register and which is not affected by any of the situations leading to the temporary or permanent loss of this status (e.g. dissolution, liquidation, strike-off)

- operations represent all the records in the trade registry including incorporations, other statutory documents and strike-off of companies, irrespective of the object of activity, company's type and origin of the subscribed capital (local or foreign investment).

• **Terms used in tables and charts**

➤ **Number of companies:** represents, depending on the specific table, the number of companies incorporated in the related period, the number of companies being struck-off from the trade registry.

➤ **Amount of the subscribed capital:**

- **total, in local currency:** the amount of the subscribed capital resulted from totalising the amount subscribed (in cash and in kind) in local currency (ROL)

➤ **Regional development:**

*North-East:* Suceava, Botoșani, Neamț, Iași, Bacău, Vaslui.

*South-East:* Vrancea, Galați, Buzău, Brăila, Tulcea, Constanța.

*South-Muntenia:* Argeș, Dâmbovița, Prahova, Teleorman, Giurgiu, Călărași, Ialomița.

*South-West Oltenia:* Gorj, Vâlcea, Dolj, Mehedinți, Olt.

*West:* Arad, Caraș-Severin, Hunedoara, Timiș.

*North-West:* Bihor, Bistrița, Cluj, Satu Mare, Sălaj, Maramureș.

*Center:* Alba, Brașov, Covasna, Harghita, Mureș, Sibiu.

*Bucharest-Ilfov:* București, Ilfov.

CAEN code – The Classification of Activities in the National Economy was approved by HG No. 656/1997, modified by Order No 601 of the President of National Institute of Statistics being compatible with the international classification used in statistic reports and official documents. Activities are ranked upon homogeneity principle by sections, divisions, groups and classes.

Common abbreviations

- **PF** - Natural Persons Tradesman
- **AF** - Family association
- **SNC** - General Partnership
- **SCS** - Limited Partnership
- **SA** - Joint stock company
- **SRL** - Limited liability company
- **RA** - Company Under State Supervision
- **OC** - Co-operative organisation

Source:

The integrated IT system of the trade registry is designed by The National Trade Registry Office according to the provisions of the related legislation in force. The source of information is the computerised system of the trade registers handled by the Trade Register Offices attached to the law courts.

Table no. 1

**Operations registered in the Trade Register, by categories  
during the period of December 1990 - October 2006 in total by country and counties,  
- rate of categories of operations in total operations/country -**

Counties	Total of registered operations		out of which :									
			Registered companies		Changes in statutory documents		out of which :				Strike off companies	
	of liquidation, dissolution						out of which :					
	No.	%	No.	%	No.	%	No.	%	No.	%	No.	%
0	1	2	3	4	5	6	7	8	9	10	11	12
<b>Total ROMÂNIA</b>	<b>7497500</b>	<b>100,0</b>	<b>1529970</b>	<b>100,0</b>	<b>5518795</b>	<b>100,0</b>	<b>9911</b>	<b>100,0</b>	<b>165854</b>	<b>100,0</b>	<b>448735</b>	<b>100,0</b>
ALBA	102298	1,4	23830	1,6	74384	1,3	371	3,7	3596	2,2	4084	0,9
ARAD	166824	2,2	37335	2,4	120510	2,2	369	3,7	2974	1,8	8979	2,0
ARGES	177066	2,4	39460	2,6	129533	2,3	197	2,0	4219	2,5	8073	1,8
BACAU	177113	2,4	38844	2,5	127501	2,3	1003	10,1	5280	3,2	10768	2,4
BIHOR	230438	3,1	45200	3,0	172309	3,1	303	3,1	4598	2,8	12929	2,9
BISTRITA-NASAUD	93085	1,2	18725	1,2	68780	1,2	72	0,7	1120	0,7	5580	1,2
BOTOSANI	69999	0,9	19006	1,2	46575	0,8	66	0,7	1563	0,9	4418	1,0
BRASOV	247574	3,3	47505	3,1	189923	3,4	149	1,5	4892	2,9	10146	2,3
BRAILA	95372	1,3	21362	1,4	71146	1,3	61	0,6	2540	1,5	2864	0,6
BUZAU	142175	1,9	28287	1,8	104315	1,9	146	1,5	2109	1,3	9573	2,1
CARAS-SEVERIN	96935	1,3	18935	1,2	70140	1,3	41	0,4	1922	1,2	7860	1,8
CALARASI	63814	0,9	15549	1,0	44564	0,8	79	0,8			3701	0,8
CLUJ	325184	4,3	69709	4,6	247043	4,5	197	2,0			8432	1,9
CONSTANTA	325808	4,3	64559	4,2	237449	4,3	926	9,3	10621	6,4	23800	5,3
COVASNA	68976	0,9	13090	0,9	51861	0,9	18	0,2	1175	0,7	4025	0,9
DAMBOVITA	115682	1,5	28650	1,9	74810	1,4	98	1,0	2951	1,8	12222	2,7
DOLJ	194512	2,6	40753	2,7	142563	2,6	215	2,2	5633	3,4	11196	2,5
GALATI	211771	2,8	36484	2,4	162123	2,9	125	1,3	5370	3,2	13164	2,9
GIURGIU	52294	0,7	12368	0,8	35348	0,6	47	0,5			4578	1,0
GORJ	101616	1,4	18461	1,2	77669	1,4	48	0,5	2667	1,6	5486	1,2
HARGHITA	108346	1,4	23005	1,5	81785	1,5	51	0,5			3556	0,8
HUNEDOARA	140888	1,9	31681	2,1	99917	1,8	126	1,3	2944	1,8	9290	2,1
IALOMITA	72135	1,0	14480	0,9	52693	1,0	78	0,8	1586	1,0	4962	1,1
IASI	254408	3,4	46781	3,1	197207	3,6	597	6,0	4224	2,5	10420	2,3
MARAMURES	153098	2,0	39559	2,6	104786	1,9	159	1,6	2924	1,8	8753	2,0
MEHEDINTI	79680	1,1	17576	1,1	54628	1,0	55	0,6	3085	1,9	7476	1,7
MURES	185896	2,5	38605	2,5	136531	2,5	83	0,8	2942	1,8	10760	2,4
NEAMT	159111	2,1	34109	2,2	112137	2,0	304	3,1	2435	1,5	12865	2,9
OLT	100071	1,3	22033	1,4	69542	1,3	21	0,2	2033	1,2	8496	1,9
PRAHOVA	261440	3,5	50408	3,3	198372	3,6	274	2,8	3934	2,4	12660	2,8
SALAJ	61995	0,8	14663	1,0	43404	0,8	29	0,3	683	0,4	3928	0,9
SATU MARE	122192	1,6	25647	1,7	87324	1,6	26	0,3	2934	1,8	9221	2,1
SIBIU	162829	2,2	29385	1,9	126984	2,3	31	0,3	2583	1,6	6460	1,4
SUCEAVA	181947	2,4	39144	2,6	128281	2,3	29	0,3	2387	1,4	14522	3,2
TELEORMAN	84186	1,1	17404	1,1	62864	1,1	49	0,5	1504	0,9	3918	0,9
TIMIS	279939	3,7	52820	3,5	212910	3,9	271	2,7	7273	4,4	14209	3,2
TULCEA	78041	1,0	16015	1,0	57250	1,0	149	1,5	1002	0,6	4776	1,1
VASLUI	87740	1,2	19847	1,3	59955	1,1	197	2,0	1384	0,8	7938	1,8
VALCEA	120464	1,6	25560	1,7	87406	1,6	138	1,4	1888	1,1	7498	1,7
VRANCEA	95575	1,3	19058	1,2	72856	1,3	51	0,5	1594	1,0	3661	0,8
MUN. BUCURESTI	1552043	20,7	290456	19,0	1156024	20,9	2641	26,6	51406	31,0	105563	23,5
ILFOV	96940	1,3	23622	1,5	67393	1,2	21	0,2	1879	1,1	5925	1,3

\*) according to the effect of Law No. 314/2001, art.1 și art. 6

\*\*\* Less than 0,01%

Table no. 2

**Operations registered in the Trade Register, by categories  
during the period of December 1990 - October 2006, in total by country and counties,  
- rate of categories of operations in total operations/country -**

Counties	Total of registered operations		out of which :									
			Registered companies		Changes in statutory documents		out of which :				Strike off companies	
	of liquidation, dissolution						out of which :					
	No.	%	No.	%	No.	%	No.	%	No.	%	No.	%
0	1	2	3	4	5	6	7	8	9	10	11	12
<b>Total ROMÂNIA</b>	<b>7497500</b>	<b>100,0</b>	<b>1529970</b>	<b>20,4</b>	<b>5518795</b>	<b>73,6</b>	<b>9911</b>	<b>0,1</b>	<b>165854</b>	<b>2,2</b>	<b>448735</b>	<b>6,0</b>
ALBA	102298	100,0	23830	23,3	74384	72,7	371	0,4	3596	3,5	4084	4,0
ARAD	166824	100,0	37335	22,4	120510	72,2	369	0,2	2974	1,8	8979	5,4
ARGES	177066	100,0	39460	22,3	129533	73,2	197	0,1	4219	2,4	8073	4,6
BACAU	177113	100,0	38844	21,9	127501	72,0	1003	0,6	5280	3,0	10768	6,1
BIHOR	230438	100,0	45200	19,6	172309	74,8	303	0,1	4598	2,0	12929	5,6
BISTRITA-NASAUD	93085	100,0	18725	20,1	68780	73,9	72	0,1	1120	1,2	5580	6,0
BOTOSANI	69999	100,0	19006	27,2	46575	66,5	66	0,1	1563	2,2	4418	6,3
BRASOV	247574	100,0	47505	19,2	189923	76,7	149	0,1	4892	2,0	10146	4,1
BRAILA	95372	100,0	21362	22,4	71146	74,6	61	0,1	2540	2,7	2864	3,0
BUZAU	142175	100,0	28287	19,9	104315	73,4	146	0,1	2109	1,5	9573	6,7
CARAS-SEVERIN	96935	100,0	18935	19,5	70140	72,4	41	0,0	1922	2,0	7860	8,1
CALARASI	63814	100,0	15549	24,4	44564	69,8	79	0,1			3701	5,8
CLUJ	325184	100,0	69709	21,4	247043	76,0	197	0,1			8432	2,6
CONSTANTA	325808	100,0	64559	19,8	237449	72,9	926	0,3	10621	3,3	23800	7,3
COVASNA	68976	100,0	13090	19,0	51861	75,2	18	0,0	1175	1,7	4025	5,8
DAMBOVITA	115682	100,0	28650	24,8	74810	64,7	98	0,1	2951	2,6	12222	10,6
DOLJ	194512	100,0	40753	21,0	142563	73,3	215	0,1	5633	2,9	11196	5,8
GALATI	211771	100,0	36484	17,2	162123	76,6	125	0,1	5370	2,5	13164	6,2
GIURGIU	52294	100,0	12368	23,7	35348	67,6	47	0,1			4578	8,8
GORJ	101616	100,0	18461	18,2	77669	76,4	48	0,0	2667	2,6	5486	5,4
HARGHITA	108346	100,0	23005	21,2	81785	75,5	51	0,0			3556	3,3
HUNEDOARA	140888	100,0	31681	22,5	99917	70,9	126	0,1	2944	2,1	9290	6,6
IALOMITA	72135	100,0	14480	20,1	52693	73,0	78	0,1	1586	2,2	4962	6,9
IASI	254408	100,0	46781	18,4	197207	77,5	597	0,2	4224	1,7	10420	4,1
MARAMURES	153098	100,0	39559	25,8	104786	68,4	159	0,1	2924	1,9	8753	5,7
MEHEDINTI	79680	100,0	17576	22,1	54628	68,6	55	0,1	3085	3,9	7476	9,4
MURES	185896	100,0	38605	20,8	136531	73,4	83	0,0	2942	1,6	10760	5,8
NEAMT	159111	100,0	34109	21,4	112137	70,5	304	0,2	2435	1,5	12865	8,1
OLT	100071	100,0	22033	22,0	69542	69,5	21	0,0	2033	2,0	8496	8,5
PRAHOVA	261440	100,0	50408	19,3	198372	75,9	274	0,1	3934	1,5	12660	4,8
SALAJ	61995	100,0	14663	23,7	43404	70,0	29	0,0	683	1,1	3928	6,3
SATU MARE	122192	100,0	25647	21,0	87324	71,5	26	0,0	2934	2,4	9221	7,5
SIBIU	162829	100,0	29385	18,0	126984	78,0	31	0,0	2583	1,6	6460	4,0
SUCEAVA	181947	100,0	39144	21,5	128281	70,5	29	0,0	2387	1,3	14522	8,0
TELEORMAN	84186	100,0	17404	20,7	62864	74,7	49	0,1	1504	1,8	3918	4,7
TIMIS	279939	100,0	52820	18,9	212910	76,1	271	0,1	7273	2,6	14209	5,1
TULCEA	78041	100,0	16015	20,5	57250	73,4	149	0,2	1002	1,3	4776	6,1
VASLUI	87740	100,0	19847	22,6	59955	68,3	197	0,2	1384	1,6	7938	9,0
VALCEA	120464	100,0	25560	21,2	87406	72,6	138	0,1	1888	1,6	7498	6,2
VRANCEA	95575	100,0	19058	19,9	72856	76,2	51	0,1	1594	1,7	3661	3,8
MUN. BUCURESTI	1552043	100,0	290456	18,7	1156024	74,5	2641	0,2	51406	3,3	105563	6,8
ILFOV	96940	100,0	23622	24,4	67393	69,5	21	0,0	1879	1,9	5925	6,1

\*) according to the effect of Law No. 314/2001, art.1 și art. 6

\*\*\* Less than 0,01%

Table no.3

Number and structure of incorporations in the Trade Register, by years, October 2006

Period (year, month)	Registered companies		Percentage	
	No.		%	%
0	1		2	3
<b>Total, 31 Februaryy 2006, out of which</b>	<b>1529970</b>		<b>92,86</b>	
Year 1990	81		0,01	
Year 1991	95840		6,26	
Year 1992	137456		8,98	
Year 1993	117078		7,65	
Year 1994	137445		8,98	
Year 1995	65479		4,28	
Year 1996	62089		4,06	
Year 1997	55663		3,64	
Year 1998	63878		4,18	
Year 1999	57197		3,74	
Year 2000	57291		3,74	
Year 2001	61265		4,00	
Year 2002	84780		5,54	
Year 2003	123582		8,08	
Year 2004	144284		9,43	
Year 2005	157375		10,29	
<b>Year 2006 (I - XII) out of which :</b>	<b>109187</b>			<b>109,3</b>
January	8797			8,1
February	12605			11,5
March	14410			13,2
April	10806			9,9
May	10051			9,2
June	12109			11,1
July	10289			9,4
August	10130			9,3
September	10130			9,28
October	9158			8,39

Note: Column 2 reveals the annual structure of incorporations; column 3 reveals the structure by months during the current year.

\*\*\* Less than 0,01%  
Diagram no.1

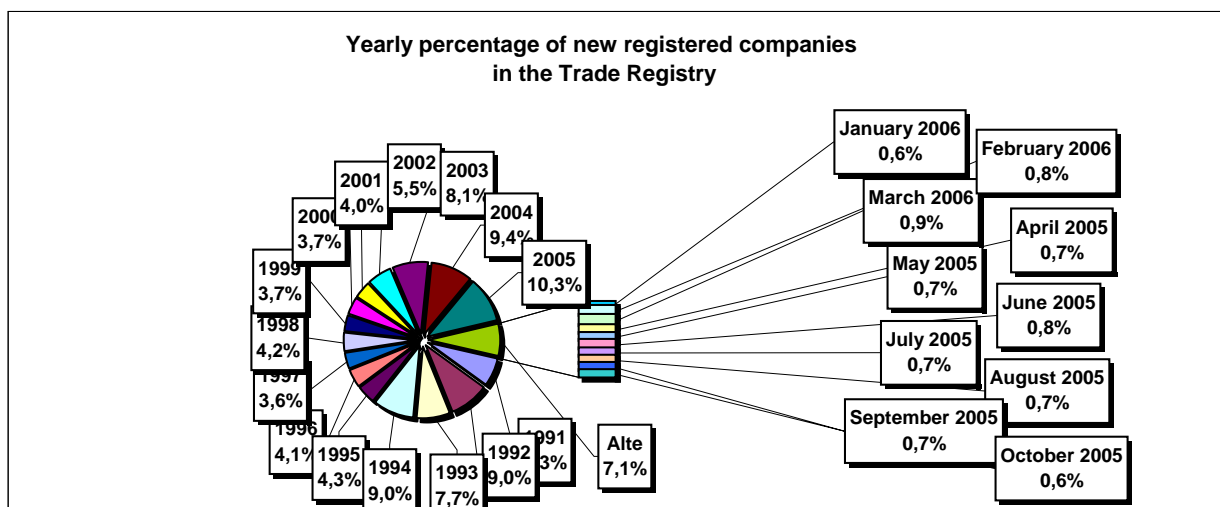


Table no. 4

**The number of incorporations in the Trade Register, by counties and sources of capital, in the period December 1990 - October 2006**

Counties	Total		out of which:					Ranking by: *	
			Private capital			State majority capital			Mixed capital (state+private)
			out of which:			out of which:			
			PF+AF	Companies	OC	RA	Companies		Companies
No.	%	No.	No.	No.	No.	No.	No.		
0	1	2	3	4	5	6	7	8	9
<b>Total ROMÂNIA</b>	<b>1529970</b>	<b>100,0</b>	<b>393013</b>	<b>1119296</b>	<b>5394</b>	<b>1335</b>	<b>2361</b>	<b>8571</b>	<b>X</b>
ALBA	23830	1,6	8205	15230	141	37	47	170	24
ARAD	37336	2,4	14311	22469	157	26	40	333	15
ARGES	39460	2,6	12839	26243	168	29	29	152	11
BACAU	38844	2,5	13022	25364	158	35	42	223	13
BIHOR	45200	3,0	9838	34810	146	37	62	307	8
BISTRITA-NASAUD	18725	1,2	6734	11736	98	19	29	109	33
BOTOSANI	19006	1,2	8635	9937	122	21	172	119	31
BRASOV	47505	3,1	9735	37355	114	44	87	170	6
BRAILA	21362	1,4	5324	15706	96	28	43	165	28
BUZAU	28287	1,8	8232	19714	142	26	42	131	21
CARAS-SEVERIN	18935	1,2	6624	11974	102	33	65	137	32
CALARASI	15549	1,0	4565	10708	86	18	77	95	38
CLUJ	69709	4,6	17521	51685	150	52	40	261	2
CONSTANTA	64559	4,2	12395	51321	203	51	49	540	3
COVASNA	13090	0,9	4396	8462	67	24	32	109	41
DAMBOVITA	28650	1,9	13242	15017	134	29	75	153	20
DOLJ	40753	2,7	8125	32167	162	40	57	202	9
GALATI	36484	2,4	7114	29011	135	30	51	143	16
GIURGIU	12368	0,8	2953	9094	80	22	109	110	42
GORJ	18461	1,2	4345	13699	184	50	83	100	34
HARGHITA	23005	1,5	8941	13683	86	23	43	229	26
HUNEDOARA	31681	2,1	8369	22820	81	37	92	282	18
IALOMITA	14480	0,9	5576	8678	74	15	46	91	40
IASI	46781	3,1	12770	33399	164	34	70	344	7
MARAMURES	39559	2,6	16219	23019	122	37	39	123	10
MEHEDINTI	17576	1,1	5556	11795	82	19	26	98	35
MURES	38605	2,5	14352	23866	156	30	34	167	14
NEAMT	34109	2,2	12624	21100	161	29	30	165	17
OLT	22033	1,4	8786	12873	161	26	64	123	27
PRAHOVA	50408	3,3	15409	34432	177	50	69	271	5
SALAJ	14663	1,0	5741	8705	107	19	28	63	39
SATU MARE	25647	1,7	8315	17049	88	19	42	134	22
SIBIU	29385	1,9	7095	21873	119	32	108	158	19
SUCEAVA	39144	2,6	18835	19793	202	30	64	220	12
TELEORMAN	17404	1,1	5997	11008	152	21	44	182	36
TIMIS	52820	3,5	8337	43889	140	38	68	348	4
TULCEA	16015	1,0	5484	10193	66	18	42	212	37
VASLUI	19847	1,3	9702	9844	109	16	41	135	29
VALCEA	25560	1,7	10118	15084	168	40	37	113	23
VRANCEA	19058	1,2	5817	12980	104	16	27	114	30
MUN. BUCURESTI	290455	19,0	17719	271272	138	115	103	1108	1
ILFOV	23622	1,5	3096	20239	92	20	13	162	25

\*) The total number of incorporations (col 1)

\*\*\* Less than 0,01%

Table no. 5

**The number of incorporations in the Trade Register,  
by counties and categories, during the period of  
December 1990 - October 2006**

County	Total		out of which:						
			PF+AF	companies: 1130228				RA	OC
	SNC	SCS		SRL	SA				
	No.	%	No.	No.	No.	No.	No.	No.	
0	1	2	3	4	5	6	7	8	9
<b>Total ROMÂNIA</b>	<b>1529970</b>	<b>100,0</b>	<b>393013</b>	<b>32648</b>	<b>1562</b>	<b>1064418</b>	<b>31594</b>	<b>1335</b>	<b>5394</b>
ALBA	23830	1,6	8205	890	11	14001	545	37	141
ARAD	37335	2,4	14311	53	11	22113	663	26	157
ARGES	39460	2,6	12839	107	14	25501	802	29	168
BACAU	38844	2,5	13022	1299	4	23609	716	35	158
BIHOR	45200	3,0	9838	125	47	34126	881	37	146
BISTRITA-NASAUD	18725	1,2	6734	146	21	11299	408	19	98
BOTOSANI	19006	1,2	8635	468	1	9313	446	21	122
BRASOV	47505	3,1	9735	239	20	36523	830	44	114
BRAILA	21362	1,4	5324	376	12	15016	510	28	96
BUZAU	28287	1,8	8232	3747	46	15536	558	26	142
CARAS-SEVERIN	18935	1,2	6624	117	8	11591	460	33	102
CALARASI	15549	1,0	4565	609	3	9921	347	18	86
CLUJ	69709	4,6	17521	2111	18	48637	1220	52	150
CONSTANTA	64559	4,2	12395	311	23	50125	1451	51	203
COVASNA	13090	0,9	4396	148	4	8155	296	24	67
DAMBOVITA	28650	1,9	13242	60	8	14692	485	29	134
DOLJ	40753	2,7	8125	1560	8	30002	856	40	162
GALATI	36484	2,4	7114	1574	6	26800	825	30	135
GIURGIU	12368	0,8	2953	35	8	8952	318	22	80
GORJ	18461	1,2	4345	29	1	13371	481	50	184
HARGHITA	23005	1,5	8941	62	6	13405	482	23	86
HUNEDOARA	31681	2,1	8369	1166	98	21273	657	37	81
IALOMITA	14480	0,9	5576	266	11	8199	339	15	74
IASI	46781	3,1	12770	506	111	32214	980	34	164
MARAMURES	39559	2,6	16219	1926	23	20652	579	37	122
MEHEDINTI	17576	1,1	5556	427	3	11166	323	19	82
MURES	38605	2,5	14352	37	34	23351	645	30	156
NEAMT	34109	2,2	12624	3293	30	17316	656	29	161
OLT	22033	1,4	8786	1611	1	10967	481	26	161
PRAHOVA	50408	3,3	15409	3122	14	30768	868	50	177
SALAJ	14663	1,0	5741	600	4	7911	281	19	107
SATU MARE	25647	1,7	8315	283	5	16473	464	19	88
SIBIU	29385	1,9	7095	775	48	20680	636	32	119
SUCEAVA	39144	2,6	18835	438	8	19055	576	30	202
TELEORMAN	17404	1,1	5997	272	399	10160	403	21	152
TIMIS	52820	3,5	8337	607	27	42451	1220	38	140
TULCEA	16015	1,0	5484	1363	114	8502	468	18	66
VASLUI	19847	1,3	9702	90	11	9521	398	16	109
VALCEA	25560	1,7	10118	364	6	14391	473	40	168
VRANCEA	19058	1,2	5817	356	10	12314	441	16	104
MUN. BUCURESTI	290456	19,0	17719	1031	295	264605	6552	115	138
ILFOV	23622	1,5	3096	49	30	19761	574	20	92

Table no. 6

**The number of incorporations in the Trade Register, by field of activity\*  
during the period of December 1990 - October 2006**

CAEN segment	Field of activity	Total		out of which:						
				PF+AF	companies:				RA	OC
					1130228					
					SNC	SCS	SRL	SA		
0	1	No.	%	No.	No.	No.	No.	No.	No.	No.
	<b>Total ROMÂNIA</b>	<b>1529970</b>	<b>100,0</b>	<b>393013</b>	<b>32648</b>	<b>1562</b>	<b>1064418</b>	<b>31594</b>	<b>1335</b>	<b>5394</b>
1	Agriculture, hunting and related service activities	62085	4,1	15030	2024	44	41039	3779	52	117
2	Forestry, logging and related service activities	8078	0,5	1043	152	3	6563	222	87	8
5	Fishing, fish farming and related service activities	2963	0,2	1703	17	3	1187	53		
10	Mining of coal and lignite; extraction of peat	113	0,0	2			75	32	4	
11	Extraction of crude petroleum and natural gas; service activities incidental to oil and gas extraction, excluding surveying	330	0,0	4	1		156	123	46	
12	Mining of uranium and thorium ores	133	0,0	32			95	6		
13	Mining of metal ores	531	0,0	163			305	55	8	
14	Other mining and quarrying	1546	0,1	109	9	1	1257	167	2	1
15	Manufacture of food products and beverages	72992	4,8	14254	3260	149	53221	1855	5	248
16	Manufacture of tobacco products	287	0,0	47			208	31	1	
17	Manufacture of textiles	11637	0,8	2352	556	16	8162	406		145
18	Manufacture of wearing apparel; dressing and dyeing of fur	20698	1,4	4692	875	38	14431	356	1	305
19	Tanning and dressing of leather; manufacture of luggage, handbags, saddlery, harness and footwear	5229	0,3	903	112	6	4033	123	1	51
20	Manufacture of wood and of products of wood and cork, except furniture; manufacture of articles of straw and plaiting materials	24715	1,6	8749	575	29	14813	498	9	42
21	Manufacture of pulp, paper and paper products	1763	0,1	122	21	1	1508	98		13
22	Publishing, printing and reproduction of recorded media	11641	0,8	944	317	21	9933	402	14	10
23	Manufacture of coke, refined petroleum products and nuclear fuel	258	0,0	24			198	34	2	
24	Manufacture of chemicals and chemical products	3656	0,2	119	89	1	3058	377	6	6
25	Manufacture of rubber and plastic products	6091	0,4	562	313	7	4927	257		24
26	Manufacture of other non-metallic mineral products	8946	0,6	2728	212	6	5597	384	5	14
27	Manufacture of basic metals	2417	0,2	168	39	3	1990	207	3	7
28	Manufacture of fabricated metal products, except machinery and equipment	16657	1,1	4022	361	23	11457	721	11	62
29	Manufacture of machinery and equipment n.e.c.	3752	0,2	105	44	7	3152	420	19	5
30	Manufacture of office machinery and computers	1765	0,1	15	25	4	1641	80		
31	Manufacture of electrical machinery and apparatus n.e.c.	1916	0,1	111	44	6	1605	144		6
32	Manufacture of radio, television and communication equipment and apparatus	852	0,1	57	14	4	703	73		1
33	Manufacture of medical, precision and optical instruments, watches and clocks	2537	0,2	606	17	2	1805	103		4
34	Manufacture of motor vehicles, trailers and semi-trailers	903	0,1	30	31	3	713	124		2
35	Manufacture of other transport equipment	1874	0,1	279	86	7	1306	121	73	2
36	Manufacture of furniture; manufacturing n.e.c.	15207	1,0	4341	284	16	10067	336	5	158
37	Recycling	4798	0,3	423	51	5	4146	172		1
40	Electricity, gas, steam and hot water supply	2895	0,2	834	3	1	1460	509	88	
41	Collection, purification and distribution of water	3543	0,2	1623	2		1649	196	73	
45	Construction	88748	5,8	23920	611	42	61620	2425	53	77

**Table no. 6**  
(continuing)

**The number of incorporations in the Trade Register, by field of activity\*  
and categories, during the period of December 1990 - October 2006**

CAEN segment	Field of activity	Total		out of which:						RA	OC
				PF+AF	companies: 1130228						
					SNC	SCS	SRL	SA			
					No.	No.	No.	No.			
0	1	2	3	4	5	6	7	8	9	10	
	<b>Total ROMÂNIA</b>	<b>1529970</b>	<b>100,0</b>	<b>393013</b>	<b>32648</b>	<b>1562</b>	<b>1064418</b>	<b>31594</b>	<b>1335</b>	<b>5394</b>	
50	Sale, maintenance and repair of motor vehicles and motorcycles; retail sale of automotive fuel	53311	3,5	8404	1244		42557	1024	6	42	
51	Wholesale trade and commission trade, except of motor vehicles and motorcycles	199680	13,1	17440	4524	150	173960	3289	35	282	
52	Retail trade, except of motor vehicles and motorcycles; repair of personal and household goods	494590	32,3	175322	11914	557	301923	2486	5	2382	
55	Hotels and restaurants	59141	3,9	14141	1635	126	42285	786	73	95	
60	Land transport; transport via pipelines	79205	5,2	35403	844	37	41823	1055	33	10	
61	Water transport	846	0,1	157	82	8	464	64	70	1	
62	Air transport	295	0,0	18			219	48	10		
63	Supporting and auxiliary transport activities; activities of travel agencies	10124	0,7	656	220	14	8689	438	96	11	
64	Post and telecommunications	6911	0,5	588	11	1	5999	298	11	3	
65	Financial intermediation, except insurance and pension funding	6205	0,4	143	15		2753	2259	2	1033	
66	Insurance and pension funding, except compulsory social security	2018	0,1	611	1		511	894		1	
67	Activities auxiliary to financial intermediation	6600	0,4	1260	7	2	5039	284		8	
70	Real estate activities	21091	1,4	723	28	9	19722	585	17	7	
71	Renting of machinery and equipment without operator and of personal and household goods	3282	0,2	647	116	8	2347	93	70	1	
72	Computer and related activities	22264	1,5	4216	119	13	17528	383	2	3	
73	Research and development	1683	0,1	240	11	2	1214	171	43	2	
74	Other business activities	105100	6,9	21659	792	74	80760	1648	106	60	
75	Public administration and defence; compulsory social security	358	0,0	89	5		216	26	21	1	
80	Education	6405	0,4	3188	62	5	3085	65			
85	Health and social work	15874	1,0	2107	233	15	13433	82	3	1	
90	Sewage and refuse disposal, sanitation and similar activities	874	0,1	91	13	2	643	105	18		
91	Activities of membership organizations n.e.c.	211	0,0	92	1		100	15		3	
92	Recreational, cultural and sporting activities	16001	1,0	4244	202	14	11162	297	70	12	
93	Other service activities	25454	1,7	10903	418	42	13583	305	76	126	
95	Activities of households as employers of domestic staff	814	0,1	501	6	1	302	3		1	
96	Extra-territorial organizations and bodies	10	0,0	10							

Table no. 7

**Operations carried on with the Trade Registers,  
by counties and categories,  
in October 2006**

County	Total of operations carried on		out of which:							
			New incorporations		Changes in statutory documents		out of which: of liquidation, dissolution		Strike off companies	
	No.	%	No.	%	No.	%	No.	%	No.	%
0	1	2	3	4	5	6	7	8	9	10
<b>Total ROMÂNIA</b>	<b>99932</b>	<b>100,0</b>	<b>10832</b>	<b>10,8</b>	<b>82961</b>	<b>83,0</b>	<b>19540</b>	<b>19,6</b>	<b>6139</b>	<b>6,1</b>
ALBA	933	100,0	125	13,4	774	83,0	391	41,9	34	3,6
ARAD	2371	100,0	307	12,9	1999	84,3	222	9,4	65	2,7
ARGES	1851	100,0	271	14,6	1537	83,0	1200	64,8	43	2,3
BACAU	1276	100,0	204	16,0	1020	79,9	327	25,6	52	4,1
BIHOR	3698	100,0	364	9,8	3034	82,0	42	1,1	300	8,1
BISTRITA-NASAUD	929	100,0	117	12,6	784	84,4	36	3,9	28	3,0
BOTOSANI	523	100,0	94	18,0	398	76,1	515	98,5	31	5,9
BRASOV	2708	100,0	380	14,0	2293	84,7	76	2,8	35	1,3
BRAILA	733	100,0	106	14,5	603	82,3	4	0,5	24	3,3
BUZAU	1955	100,0	169	8,6	1744	89,2	22	1,1	42	2,1
CARAS-SEVERIN	605	100,0	166	27,4	434	71,7	3	0,5	5	0,8
CALARASI	1266	100,0	80	6,3	465	36,7			721	57,0
CLUJ	4858	100,0	593	12,2	4112	84,6	17	0,3	153	3,1
CONSTANTA	3753	100,0	389	10,4	3290	87,7	41	1,1	74	2,0
COVASNA	736	100,0	84	11,4	635	86,3	70	9,5	17	2,3
DAMBOVITA	1218	100,0	192	15,8	969	79,6	99	8,1	57	4,7
DOLJ	1863	100,0	242	13,0	1592	85,5	1544	82,9	29	1,6
GALATI	2733	100,0	240	8,8	1994	73,0	68	2,5	499	18,3
GIURGIU	878	100,0	75	8,5	794	90,4	312	35,5	9	1,0
GORJ	882	100,0	105	11,9	746	84,6	912	103,4	31	3,5
HARGHITA	1035	100,0	182	17,6	827	79,9	22	2,1	26	2,5
HUNEDOARA	3083	100,0	224	7,3	2832	91,9	469	15,2	27	0,9
IALOMITA	740	100,0	95	12,8	621	83,9	58	7,8	24	3,2
IASI	3129	100,0	368	11,8	2741	87,6	4	0,1	20	0,6
MARAMURES	2513	100,0	277	11,0	2162	86,0	402	16,0	74	2,9
MEHEDINTI	835	100,0	87	10,4	716	85,7	813	97,4	32	3,8
MURES	1963	100,0	257	13,1	1613	82,2	1344	68,5	93	4,7
NEAMT	1257	100,0	209	16,6	1012	80,5	13	1,0	36	2,9
OLT	955	100,0	96	10,1	832	87,1	22	2,3	27	2,8
PRAHOVA	2271	100,0	330	14,5	1871	82,4	1681	74,0	70	3,1
SALAJ	1172	100,0	93	7,9	1042	88,9	130	11,1	37	3,2
SATU MARE	1923	100,0	209	10,9	1699	88,4	6	0,3	15	0,8
SIBIU	6029	100,0	261	4,3	5528	91,7	352	5,8	240	4,0
SUCEAVA	3165	100,0	231	7,3	2572	81,3	24	0,8	362	11,4
TELEORMAN	615	100,0	95	15,4	452	73,5	58	9,4	68	11,1
TIMIS	3179	100,0	468	14,7	2657	83,6	9	0,3	54	1,7
TULCEA	607	100,0	102	16,8	489	80,6	186	30,6	16	2,6
VASLUI	869	100,0	107	12,3	733	84,3	865	99,5	29	3,3
VALCEA	960	100,0	148	15,4	794	82,7	45	4,7	18	1,9
VRANCEA	1146	100,0	96	8,4	1030	89,9	4	0,3	20	1,7
MUN. BUCURESTI	25061	100,0	2289	9,1	20193	80,6	7011	28,0	2579	10,3
ILFOV	1656	100,0	305	18,4	1328	80,2	121	7,3	23	1,4

\*) by effect of implementation of Law no. 314/2001, art.1 and art. 6

\*\*\* Less than 0,01%

Table no. 8

**The number of incorporations in the Trade Register,  
by counties and sources of capital,  
in October 2006**

County	Total		out of which:					Rnking by: *	
			Private capital			State majority capital			Mixed capital (state+priva)
			out of which:			out of which:			
			PF+AF	Companies	OC	RA	Companie s		Companie s
No.	%	No.	No.	No.	No.	No.	No.		
0	1	2	3	4	5	6	7	8	9
<b>Total ROMÂNIA</b>	<b>10832</b>	<b>100,0</b>	<b>2701</b>	<b>8127</b>		<b>1</b>		<b>3</b>	<b>X</b>
ALBA	125	1,2	36	89					27
ARAD	307	2,8	86	221					9
ARGES	271	2,5	63	208					12
BACAU	204	1,9	55	149					21
BIHOR	364	3,4	121	243					7
BISTRITA-NASAUD	117	1,1	48	69					28
BOTOSANI	94	0,9	39	55					37
BRASOV	380	3,5	86	293		1			5
BRAILA	106	1,0	16	90					30
BUZAU	169	1,6	60	109					24
CARAS-SEVERIN	166	1,5	50	116					25
CALARASI	80	0,7	19	61					41
CLUJ	593	5,5	169	424					2
CONSTANTA	389	3,6	67	322					4
COVASNA	84	0,8	26	58					40
DAMBOVITA	192	1,8	67	125					22
DOLJ	242	2,2	52	190					15
GALATI	240	2,2	59	181					16
GIURGIU	75	0,7	16	59					42
GORJ	105	1,0	32	73					31
HARGHITA	182	1,7	83	99					23
HUNEDOARA	224	2,1	69	155					18
IALOMITA	95	0,9	28	67					35
IASI	368	3,4	112	256					6
MARAMURES	277	2,6	82	195					11
MEHEDINTI	87	0,8	32	55					39
MURES	257	2,4	74	183					14
NEAMT	209	1,9	70	139					19
OLT	96	0,9	22	74					33
PRAHOVA	330	3,0	94	236					8
SALAJ	93	0,9	39	54					38
SATU MARE	209	1,9	80	129					20
SIBIU	261	2,4	73	188					13
SUCEAVA	231	2,1	98	133					17
TELEORMAN	95	0,9	30	65					36
TIMIS	468	4,3	90	376				2	3
TULCEA	102	0,9	49	53					32
VASLUI	107	1,0	40	67					29
VALCEA	148	1,4	41	107					26
VRANCEA	96	0,9	30	66					34
MUN. BUCURESTI	2289	21,1	252	2037					1
ILFOV	305	2,8	46	258				1	10

\*) The total number of incorporations (col 1)

\*\*\* Less than 0,01%

Table no.9

**The number of incorporations in the Trade Register,  
by counties and category  
in October 2006**

County	Total		out of which:						RA	OC
			PF+AF	companies: 8130						
	No.	%		No.	SNC	SCS	SRL	SA	No.	No.
			No.		No.	No.	No.			
0	1	2	3	4	5	6	7	8	9	
<b>Total ROMÂNIA</b>	<b>10832</b>	<b>100,0</b>	<b>2701</b>			<b>8053</b>	<b>77</b>	<b>1</b>		
ALBA	125	1,2	36			89				
ARAD	307	2,8	86			221				
ARGES	271	2,5	63			205	3			
BACAU	204	1,9	55			146	3			
BIHOR	364	3,4	121			243				
BISTRITA-NASAUD	117	1,1	48			68	1			
BOTOSANI	94	0,9	39			53	2			
BRASOV	380	3,5	86			291	2	1		
BRAILA	106	1,0	16			89	1			
BUZAU	169	1,6	60			108	1			
CARAS-SEVERIN	166	1,5	50			116				
CALARASI	80	0,7	19			60	1			
CLUJ	593	5,5	169			417	7			
CONSTANTA	389	3,6	67			318	4			
COVASNA	84	0,8	26			58				
DAMBOVITA	192	1,8	67			121	4			
DOLJ	242	2,2	52			189	1			
GALATI	240	2,2	59			179	2			
GIURGIU	75	0,7	16			57	2			
GORJ	105	1,0	32			73				
HARGHITA	182	1,7	83			98	1			
HUNEDOARA	224	2,1	69			154	1			
IALOMITA	95	0,9	28			67				
IASI	368	3,4	112			254	2			
MARAMURES	277	2,6	82			194	1			
MEHEDINTI	87	0,8	32			55				
MURES	257	2,4	74			181	2			
NEAMT	209	1,9	70			137	2			
OLT	96	0,9	22			73	1			
PRAHOVA	330	3,0	94			233	3			
SALAJ	93	0,9	39			53	1			
SATU MARE	209	1,9	80			126	3			
SIBIU	261	2,4	73			187	1			
SUCEAVA	231	2,1	98			133				
TELEORMAN	95	0,9	30			65				
TIMIS	468	4,3	90			376	2			
TULCEA	102	0,9	49			53				
VASLUI	107	1,0	40			66	1			
VALCEA	148	1,4	41			105	2			
VRANCEA	96	0,9	30			65	1			
MUN. BUCURESTI	2289	21,1	252			2020	17			
ILFOV	305	2,8	46			257	2			

Table no. 10

**The number of incorporations in the Trade Register, by field of activity\*  
and categories in October 2006**

CAEN segment	Field of activity	Total		out of which:						RA	OC
				PF+AF	companies: 8130						
		No.	%		No.	SNC	SCS	SRL	SA	No.	No.
		0	1	2	3	4	5	6	7	8	9
	<b>Total ROMÂNIA</b>	<b>10832</b>	<b>100,0</b>	<b>2701</b>			<b>8053</b>	<b>77</b>	<b>1</b>		
1	Agriculture, hunting and related service activities	268	2,5	119			148	1			
2	Forestry, logging and related service activities	48	0,4	5			42		1		
5	Fishing, fish farming and related service activities	39	0,4	24			15				
10	Mining of coal and lignite; extraction of peat	1	0,0				1				
11	Extraction of crude petroleum and natural gas; service activities incidental to oil and gas extraction, excluding surveying	4	0,0	1			3				
12	Mining of uranium and thorium ores										
13	Mining of metal ores	2	0,0				2				
14	Other mining and quarrying	22	0,2				22				
15	Manufacture of food products and beverages	154	1,4	80			70	4			
16	Manufacture of tobacco products										
17	Manufacture of textiles	37	0,3	9			28				
18	Manufacture of wearing apparel; dressing and dyeing of fur	86	0,8	22			64				
19	Tanning and dressing of leather; manufacture of luggage, handbags, saddlery, harness and footwear	25	0,2	1			24				
20	Manufacture of wood and of products of wood and cork, except furniture; manufacture of articles of straw and plaiting materials	83	0,8	29			54				
21	Manufacture of pulp, paper and paper products	10	0,1	2			8				
22	Publishing, printing and reproduction of recorded media	57	0,5	3			54				
23	Manufacture of coke, refined petroleum products and nuclear fuel										
24	Manufacture of chemicals and chemical products	14	0,1				14				
25	Manufacture of rubber and plastic products	34	0,3	1			33				
26	Manufacture of other non-metallic mineral products	38	0,4	13			24	1			
27	Manufacture of basic metals	4	0,0				4				
28	Manufacture of fabricated metal products, except machinery and equipment	154	1,4	57			96	1			
29	Manufacture of machinery and equipment n.e.c.	10	0,1				10				
30	Manufacture of office machinery and computers	4	0,0				4				
31	Manufacture of electrical machinery and apparatus n.e.c.	14	0,1	2			12				
32	Manufacture of radio, television and communication equipment and apparatus	5	0,0				5				
33	Manufacture of medical, precision and optical instruments, watches and clocks	20	0,2	6			14				
34	Manufacture of motor vehicles, trailers and semi- trailers	11	0,1				10	1			
35	Manufacture of other transport equipment	9	0,1	1			8				
36	Manufacture of furniture; manufacturing n.e.c.	104	1,0	25			79				
37	Recycling	31	0,3	1			30				
40	Electricity, gas, steam and hot water supply	13	0,1				11	2			
41	Collection, purification and distribution of water	2	0,0	1			1				
45	Construction	1368	12,6	246			1121	1			

**Table no. 10**  
(continuance)

**The number of incorporations in the Trade Register, by field of activity\*  
and categories in October 2006**

CAEN segment	Field of activity	Total		out of which:						
				PF+AF	companies: 8130				RA	OC
		No.	%		No.	SNC	SCS	SRL		
				No.		No.	No.	No.	No.	No.
0	1	2	3	4	5	6	7	8	9	10
	<b>Total ROMÂNIA</b>	<b>10832</b>	<b>100,0</b>	<b>2701</b>			<b>8053</b>	<b>77</b>	<b>1</b>	
50	Sale, maintenance and repair of motor vehicles and motorcycles; retail sale of automotive fuel	328	3,0	53			275			
51	Wholesale trade and commission trade, except of motor vehicles and motorcycles	1121	10,3	213			903	5		
52	Retail trade, except of motor vehicles and motorcycles; repair of personal and household goods	2016	18,6	703			1312	1		
55	Hotels and restaurants	413	3,8	66			347			
60	Land transport; transport via pipelines	729	6,7	235			492	2		
61	Water transport									
62	Air transport	3	0,0				2	1		
63	Supporting and auxiliary transport activities; activities of travel agencies	93	0,9	9			84			
64	Post and telecommunications	115	1,1	39			75	1		
65	Financial intermediation, except insurance and pension funding	55	0,5				28	27		
66	Insurance and pension funding, except compulsory social security	21	0,2	2			4	15		
67	Activities auxiliary to financial intermediation	95	0,9	4			89	2		
70	Real estate activities	564	5,2	10			549	5		
71	Renting of machinery and equipment without operator and of personal and household goods	56	0,5	8			48			
72	Computer and related activities	338	3,1	129			209			
73	Research and development	13	0,1	1			12			
74	Other business activities	1466	13,5	295			1165	6		
75	Public administration and defence; compulsory social security									
80	Education	76	0,7	17			59			
85	Health and social work	102	0,9	2			100			
90	Sewage and refuse disposal, sanitation and similar activities	14	0,1	1			13			
91	Activities of membership organizations n.e.c.	1	0,0				1			
92	Recreational, cultural and sporting activities	197	1,8	69			127	1		
93	Other service activities	318	2,9	172			146			
95	Activities of households as employers of domestic staff	26	0,2	24			2			
96	Extra-territorial organizations and bodies									

\*)Field of activity declared when registered, according to CAEN classification

**Number of companies registered and the amount  
of subscribed capital, by county in October 2006**

County	Total registered companies		Subscribed capital		Average subscribed capital on company
	No.	%	mii RON	%	mii RON
0	1	2	3	4	5
<b>Total ROMÂNIA</b>	<b>8130</b>	<b>100,0</b>	<b>123775,2</b>	<b>100,0</b>	<b>15,3</b>
ALBA	89	1,1	22,1	0,0	0,2
ARAD	221	2,7	393,0	0,3	1,8
ARGES	208	2,6	667,0	0,5	3,2
BACAU	149	1,8	1517,8	1,2	10,3
BIHOR	243	3,0	178,0	0,1	0,7
BISTRITA-NASAUD	69	0,8	71,2	0,1	1,0
BOTOSANI	55	0,7	892,7	0,7	16,5
BRASOV	293	3,6	244,4	0,2	0,8
BRAILA	90	1,1	88,1	0,1	1,0
BUZAU	109	1,3	214,8	0,2	2,0
CARAS-SEVERIN	116	1,4	397,4	0,3	3,4
CALARASI	61	0,8	176,2	0,1	2,9
CLUJ	424	5,2	2658,5	2,1	6,3
CONSTANTA	322	4,0	1285,8	1,0	4,0
COVASNA	58	0,7	120,7	0,1	2,1
DAMBOVITA	125	1,5	497,5	0,4	4,1
DOLJ	190	2,3	1173,0	0,9	6,2
GALATI	181	2,2	1123,8	0,9	6,2
GIURGIU	59	0,7	31,1	0,0	0,5
GORJ	73	0,9	19,4	0,0	0,3
HARGHITA	99	1,2	185,1	0,1	1,9
HUNEDOARA	155	1,9	63,4	0,1	0,4
IALOMITA	67	0,8	65,4	0,1	1,0
IASI	256	3,1	274,2	0,2	1,1
MARAMURES	195	2,4	469,9	0,4	2,4
MEHEDINTI	55	0,7	2334,2	1,9	42,4
MURES	183	2,3	4041,4	3,3	22,2
NEAMT	139	1,7	2153,5	1,7	15,6
OLT	74	0,9	23,0	0,0	0,3
PRAHOVA	236	2,9	4967,9	4,0	21,2
SALAJ	54	0,7	32,3	0,0	0,6
SATU MARE	129	1,6	272,6	0,2	2,1
SIBIU	188	2,3	2719,3	2,2	14,5
SUCEAVA	133	1,6	90,1	0,1	0,7
TELEORMAN	65	0,8	18,5	0,0	0,3
TIMIS	378	4,6	3420,8	2,8	9,0
TULCEA	53	0,7	37,4	0,0	0,7
VASLUI	67	0,8	18,2	0,0	0,3
VALCEA	107	1,3	38,8	0,0	0,4
VRANCEA	66	0,8	99,2	0,1	1,5
MUN. BUCURESTI	2037	25,1	73967,0	59,8	36,6
ILFOV	259	3,2	16710,4	13,5	64,8

*Note: The average does not include filials because according to the Law no.31/1990 they are not juridical persons*

*\*\*\* Less than 0,01%*

Table no. 12

**Number of registered companies and the amount  
of subscribed capital by category,  
in October 2006**

Company type	Total registered companies		Subscribed capital		Average subscribed capital on company
	No.	%	mii RON	%	mil. RON
0	1	2	3	4	5
<b>Total ROMÂNIA</b>	<b>8130</b>	<b>100,0</b>	<b>123775,2</b>	<b>100,0</b>	<b>15,3</b>
<b>SNC</b>					
<b>SCS</b>					
<b>SA</b>	77	0,9	22996,3	18,6	766,5
<b>SRL</b>	8053	99,1	100778,9	81,4	12,5
<b>SCA</b>					

*Note: The average does not include filials because according to the Law no.31/1990 they are not juridical persons*

\*\*\* Less than 0,01%

Diagram no.5

