



MINISTRY OF JUSTICE

THE NATIONAL TRADE REGISTER OFFICE

București, Bd. Unirii nr. 74, Bl. J3b, tronson II+III, sector 3; Telefon: +40 21 316.08.04, 316.08.10; Fax: +40 21 316.08.03 Cod poștal: 030837
Website: www.onrc.ro; E-mail: onrc@onrc.ro; Cod de identificare Fiscală: 14942091; înregistrat ca operator date personale sub nr.1350

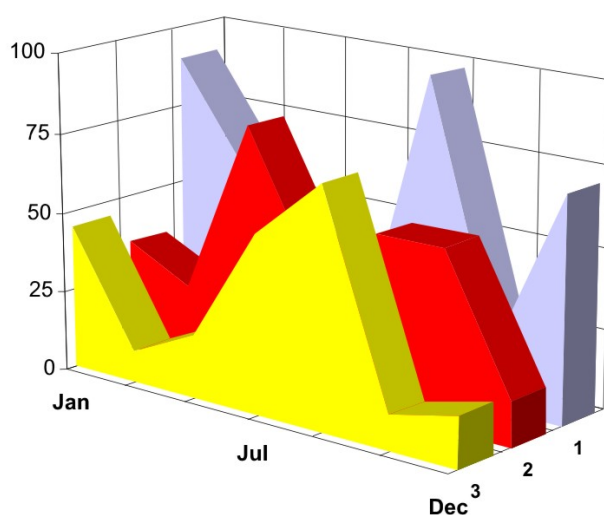
PROCEEDINGS IN THE CENTRAL TRADE REGISTER

STATISTICAL SYNTHESIS

OF

RECORDS IN THE CENTRAL TRADE REGISTER

- the 30th of September 2006 - provisional data -



- ISSUE No. 178 -

**MINISTRY OF JUSTICE
THE NATIONAL TRADE REGISTER OFFICE**

- Operations of incorporation of companies, changes in statutory documents and strike-off of companies are based on Law No.26/1990 reissued, Law No.31/1990, reissued, OUG No.76/2001, reissued and Methodology Norms No. P/608/1998.

- This paper presents the trend in operations registered in The Trade Register Office attached to the law court of Bucharest and in the Trade Register Offices attached to the law court in each county of Romania.

- Information recorded in the Central Trade Register concern operations compulsory by law to be registered in the trade registers within the 42 trade register offices attached to the law courts.

• No part of the content of this publication, in original or in any modified format, September be reproduced, stored in a retrieval system, or transmitted, in any form or by any means, without the prior permission in writing of The Ministry of Justice – The National Trade Register Office.

• The content of this publication September be referred to in articles, studies, books, as supporting or explanatory data under the condition only, the source of the information to be clearly and precisely specified.

Contents

	Page
1 Explanatory Note	1
2.1 Data for December 1990 – September 2006	3
Table no.1 – Operations registered in the Trade Register, by categories during the period of December 1990 – September 2006, in total by country and counties, rate of categories of operations in total operations country	3
Table no.1.a – Operations registered in the Trade Register, by categories during the period of December 1990 – September 2006, in total by country and counties, counties’ rate in total country	4
Table no. 3 – Number and structure of incorporations in the Trade Register, by years, during the period of December 1990- September 2006	5
Table no.4 – The number of incorporations in the Trade Register, by counties and sources of capital, in the period December 1990 - September 2006	6
Table no. 5 – The number of incorporations in the Trade Register, by counties and categories, during the period of December 1990 – September 2006	7
Table no. 6 – The number of incorporations in the Trade Register, by field of activity and categories, during the period of December 1990 - September 2006	8
2.2 Data for September 2006	10
Table no. 7 – Operations carried on with the Trade Registers, by counties and categories, in September 2006	10
Table no. 8 – The number of incorporations in the Trade Register, by counties and sources of capital, in September 2006	11
Table no. 9 – The number of incorporations in the Trade Register, by counties and category in September 2006	12
Table no. 10 –The number of incorporations in the Trade Register, by field of activity and categories in September 2006	13
Table no. 11 – Number of companies registered and the amount of subscribed capital, by county in September 2006	15
Table no. 12– Number of registered companies and the amount of subscribed capital by category, in September 2006	16
Diagram no. 5 – Average subscribed capital on company in September 2006	16

Explanatory Note

The Trade Register Office is set-up by Law No. 26/1990, reissued and modified by OUG No. 129/2002, became an active institution since December 1990 and is structured in two levels:

- the national level, represented by the National Trade Register Office organised under the Ministry of Justice
- the local level, represented by the 42 trade register offices attached to the law courts and co-ordinated by the National Trade Register Office

The categories of businessmen compulsory to register in the trade register are:

- natural persons tradesmen and family associations doing usually commercial acts, commercial companies, national companies, companies under state supervision, and co-operative organisations
- subsidiaries registered as commercial companies and legal persons following the legal proceedings of set-up, activity and incorporation according to the type of the legally set-up company.

Usual Terms:

- incorporation – represents the registration of the company in the trade registry awarding the quality of legal person.

- other statutory documents – represent the official registration of the changes occurred in a company's life, such as: changes in headquarters' address, increase or decrease of the issued capital, merger, liquidation, strike-off, etc.

- strike-off – represents the removal of a company from the trade registry, due to dissolution and liquidation, being also the very moment the company loses its quality of legal person. Data also include the companies under the provisions of Law No. 314/2001.

- change of certificate – represents the obligation of companies set-up before OGU No. 76/2001 republished came in force, to request the incorporation certificate and fiscal registration certificate to be replaced with the new registration certificate containing the given unique registration code.

The ratio of these changes is being calculated as a proportion between the effective number of changes and the number of active companies due to operate the change.

- active company from the legal point of view – a company registered in the trade register and which is not affected by any of the situations leading to the temporary or permanent loss of this status (e.g. dissolution, liquidation, strike-off)

- operations represent all the records in the trade registry including incorporations, other statutory documents and strike-off of companies, irrespective of the object of activity, company's type and origin of the subscribed capital (local or foreign investment).

• **Terms used in tables and charts**

➤ **Number of companies:** represents, depending on the specific table, the number of companies incorporated in the related period, the number of companies being struck-off from the trade registry.

➤ **Amount of the subscribed capital:**

- **total, in local currency:** the amount of the subscribed capital resulted from totalising the amount subscribed (in cash and in kind) in local currency (ROL)

➤ **Regional development:**

<i>North-East:</i>	Suceava, Botoșani, Neamț, Iași, Bacău, Vaslui.
<i>South-East:</i>	Vrancea, Galați, Buzău, Brăila, Tulcea, Constanța.
<i>South-Muntenia:</i>	Argeș, Dâmbovița, Prahova, Teleorman, Giurgiu, Călărași, Ialomița.
<i>South-West Oltenia:</i>	Gorj, Vâlcea, Dolj, Mehedinți, Olt.
<i>West:</i>	Arad, Caraș-Severin, Hunedoara, Timiș.
<i>North-West:</i>	Bihor, Bistrița, Cluj, Satu Mare, Sălaj, Maramureș.
<i>Center:</i>	Alba, Brașov, Covasna, Harghita, Mureș, Sibiu.
<i>Bucharest-Ilfov:</i>	București, Ilfov.

CAEN code – The Classification of Activities in the National Economy was approved by HG No. 656/1997, modified by Order No 601 of the President of National Institute of Statistics being compatible with the international classification used in statistic reports and official documents. Activities are ranked upon homogeneity principle by sections, divisions, groups and classes.

Common abbreviations

- **PF** - Natural Persons Tradesman
- **AF** - Family association
- **SNC** - General Partnership
- **SCS** - Limited Partnership
- **SA** - Joint stock company
- **SRL** - Limited liability company
- **RA** - Company Under State Supervision
- **OC** - Co-operative organisation

Source:

The integrated IT system of the trade registry is designed by The National Trade Registry Office according to the provisions of the related legislation in force. The source of information is the computerised system of the trade registers handled by the Trade Register Offices attached to the law courts.

Table no. 1

**Operations registered in the Trade Register, by categories
during the period of December 1990 - September 2006 in total by country and counties,
- rate of categories of operations in total operations/country -**

Counties	Total of registered operations		out of which :									
			Registered companies		Changes in statutory documents		out of which :				Strike off companies	
	of liquidation, dissolution						out of which : *) L314/2001					
	No.	%	No.	%	No.	%	No.	%	No.	%	No.	%
0	1	2	3	4	5	6	7	8	9	10	11	12
Total ROMÂNIA	7397568	100,0	1519138	100,0	5435834	100,0	9911	100,0	165855	100,0	442596	100,0
ALBA	101365	1,4	23705	1,6	73610	1,4	371	3,7	3596	2,2	4050	0,9
ARAD	164453	2,2	37028	2,4	118511	2,2	369	3,7	2974	1,8	8914	2,0
ARGES	175215	2,4	39189	2,6	127996	2,4	197	2,0	4219	2,5	8030	1,8
BACAU	175837	2,4	38640	2,5	126481	2,3	1003	10,1	5280	3,2	10716	2,4
BIHOR	226740	3,1	44836	3,0	169275	3,1	303	3,1	4598	2,8	12629	2,9
BISTRITA-NASAUD	92156	1,2	18608	1,2	67996	1,3	72	0,7	1120	0,7	5552	1,3
BOTOSANI	69476	0,9	18912	1,2	46177	0,8	66	0,7	1563	0,9	4387	1,0
BRASOV	244866	3,3	47125	3,1	187630	3,5	149	1,5	4892	2,9	10111	2,3
BRAILA	94639	1,3	21256	1,4	70543	1,3	61	0,6	2540	1,5	2840	0,6
BUZAU	140220	1,9	28118	1,9	102571	1,9	146	1,5	2109	1,3	9531	2,2
CARAS-SEVERIN	96330	1,3	18769	1,2	69706	1,3	41	0,4	1922	1,2	7855	1,8
CALARASI	62548	0,8	15469	1,0	44099	0,8	79	0,8			2980	0,7
CLUJ	320326	4,3	69116	4,5	242931	4,5	197	2,0			8279	1,9
CONSTANTA	322055	4,4	64170	4,2	234159	4,3	926	9,3	10621	6,4	23726	5,4
COVASNA	68240	0,9	13006	0,9	51226	0,9	18	0,2	1175	0,7	4008	0,9
DAMBOVITA	114464	1,5	28458	1,9	73841	1,4	98	1,0	2951	1,8	12165	2,7
DOLJ	192649	2,6	40511	2,7	140971	2,6	215	2,2	5633	3,4	11167	2,5
GALATI	209038	2,8	36244	2,4	160129	2,9	125	1,3	5370	3,2	12665	2,9
GIURGIU	51416	0,7	12293	0,8	34554	0,6	47	0,5			4569	1,0
GORJ	100734	1,4	18356	1,2	76923	1,4	48	0,5	2667	1,6	5455	1,2
HARGHITA	107311	1,5	22823	1,5	80958	1,5	51	0,5			3530	0,8
HUNEDOARA	137805	1,9	31457	2,1	97085	1,8	126	1,3	2944	1,8	9263	2,1
IALOMITA	71395	1,0	14385	0,9	52072	1,0	78	0,8	1586	1,0	4938	1,1
IASI	251279	3,4	46413	3,1	194466	3,6	597	6,0	4224	2,5	10400	2,3
MARAMURES	150585	2,0	39282	2,6	102624	1,9	159	1,6	2924	1,8	8679	2,0
MEHEDINTI	78845	1,1	17489	1,2	53912	1,0	55	0,6	3085	1,9	7444	1,7
MURES	183933	2,5	38348	2,5	134918	2,5	83	0,8	2942	1,8	10667	2,4
NEAMT	157854	2,1	33900	2,2	111125	2,0	304	3,1	2435	1,5	12829	2,9
OLT	99116	1,3	21937	1,4	68710	1,3	21	0,2	2033	1,2	8469	1,9
PRAHOVA	259169	3,5	50078	3,3	196501	3,6	274	2,8	3934	2,4	12590	2,8
SALAJ	60823	0,8	14570	1,0	42362	0,8	29	0,3	683	0,4	3891	0,9
SATU MARE	120269	1,6	25438	1,7	85625	1,6	26	0,3	2934	1,8	9206	2,1
SIBIU	156800	2,1	29124	1,9	121456	2,2	31	0,3	2583	1,6	6220	1,4
SUCEAVA	178782	2,4	38913	2,6	125709	2,3	29	0,3	2387	1,4	14160	3,2
TELEORMAN	83571	1,1	17309	1,1	62412	1,1	49	0,5	1504	0,9	3850	0,9
TIMIS	276760	3,7	52352	3,4	210253	3,9	271	2,7	7273	4,4	14155	3,2
TULCEA	77434	1,0	15913	1,0	56761	1,0	149	1,5	1002	0,6	4760	1,1
VASLUI	86871	1,2	19740	1,3	59222	1,1	197	2,0	1385	0,8	7909	1,8
VALCEA	119504	1,6	25412	1,7	86612	1,6	138	1,4	1888	1,1	7480	1,7
VRANCEA	94429	1,3	18962	1,2	71826	1,3	51	0,5	1594	1,0	3641	0,8
MUN. BUCURESTI	1526982	20,6	288167	19,0	1135831	20,9	2641	26,6	51406	31,0	102984	23,3
ILFOV	95284	1,3	23317	1,5	66065	1,2	21	0,2	1879	1,1	5902	1,3

*) according to the effect of Law No. 314/2001, art.1 și art. 6

*** Less than 0,01%

Table no. 2

**Operations registered in the Trade Register, by categories
during the period of December 1990 - September 2006, in total by country and counties,
- rate of categories of operations in total operations/country -**

Counties	Total of registered operations		out of which :									
			Registered companies		Changes in statutory documents		out of which :				Strike off companies	
	of liquidation, dissolution						out of which :					
	No.	%	No.	%	No.	%	No.	%	No.	%	No.	%
0	1	2	3	4	5	6	7	8	9	10	11	12
Total ROMÂNIA	7397568	100,0	1519138	20,5	5435834	73,5	9911	0,1	165855	2,2	442596	6,0
ALBA	101365	100,0	23705	23,4	73610	72,6	371	0,4	3596	3,5	4050	4,0
ARAD	164453	100,0	37028	22,5	118511	72,1	369	0,2	2974	1,8	8914	5,4
ARGES	175215	100,0	39189	22,4	127996	73,1	197	0,1	4219	2,4	8030	4,6
BACAU	175837	100,0	38640	22,0	126481	71,9	1003	0,6	5280	3,0	10716	6,1
BIHOR	226740	100,0	44836	19,8	169275	74,7	303	0,1	4598	2,0	12629	5,6
BISTRITA-NASAUD	92156	100,0	18608	20,2	67996	73,8	72	0,1	1120	1,2	5552	6,0
BOTOSANI	69476	100,0	18912	27,2	46177	66,5	66	0,1	1563	2,2	4387	6,3
BRASOV	244866	100,0	47125	19,2	187630	76,6	149	0,1	4892	2,0	10111	4,1
BRAILA	94639	100,0	21256	22,5	70543	74,5	61	0,1	2540	2,7	2840	3,0
BUZAU	140220	100,0	28118	20,1	102571	73,2	146	0,1	2109	1,5	9531	6,8
CARAS-SEVERIN	96330	100,0	18769	19,5	69706	72,4	41	0,0	1922	2,0	7855	8,2
CALARASI	62548	100,0	15469	24,7	44099	70,5	79	0,1			2980	4,8
CLUJ	320326	100,0	69116	21,6	242931	75,8	197	0,1			8279	2,6
CONSTANTA	322055	100,0	64170	19,9	234159	72,7	926	0,3	10621	3,3	23726	7,4
COVASNA	68240	100,0	13006	19,1	51226	75,1	18	0,0	1175	1,7	4008	5,9
DAMBOVITA	114464	100,0	28458	24,9	73841	64,5	98	0,1	2951	2,6	12165	10,6
DOLJ	192649	100,0	40511	21,0	140971	73,2	215	0,1	5633	2,9	11167	5,8
GALATI	209038	100,0	36244	17,3	160129	76,6	125	0,1	5370	2,6	12665	6,1
GIURGIU	51416	100,0	12293	23,9	34554	67,2	47	0,1			4569	8,9
GORJ	100734	100,0	18356	18,2	76923	76,4	48	0,0	2667	2,6	5455	5,4
HARGHITA	107311	100,0	22823	21,3	80958	75,4	51	0,0			3530	3,3
HUNEDOARA	137805	100,0	31457	22,8	97085	70,5	126	0,1	2944	2,1	9263	6,7
IALOMITA	71395	100,0	14385	20,1	52072	72,9	78	0,1	1586	2,2	4938	6,9
IASI	251279	100,0	46413	18,5	194466	77,4	597	0,2	4224	1,7	10400	4,1
MARAMURES	150585	100,0	39282	26,1	102624	68,2	159	0,1	2924	1,9	8679	5,8
MEHEDINTI	78845	100,0	17489	22,2	53912	68,4	55	0,1	3085	3,9	7444	9,4
MURES	183933	100,0	38348	20,8	134918	73,4	83	0,0	2942	1,6	10667	5,8
NEAMT	157854	100,0	33900	21,5	111125	70,4	304	0,2	2435	1,5	12829	8,1
OLT	99116	100,0	21937	22,1	68710	69,3	21	0,0	2033	2,1	8469	8,5
PRAHOVA	259169	100,0	50078	19,3	196501	75,8	274	0,1	3934	1,5	12590	4,9
SALAJ	60823	100,0	14570	24,0	42362	69,6	29	0,0	683	1,1	3891	6,4
SATU MARE	120269	100,0	25438	21,2	85625	71,2	26	0,0	2934	2,4	9206	7,7
SIBIU	156800	100,0	29124	18,6	121456	77,5	31	0,0	2583	1,6	6220	4,0
SUCEAVA	178782	100,0	38913	21,8	125709	70,3	29	0,0	2387	1,3	14160	7,9
TELEORMAN	83571	100,0	17309	20,7	62412	74,7	49	0,1	1504	1,8	3850	4,6
TIMIS	276760	100,0	52352	18,9	210253	76,0	271	0,1	7273	2,6	14155	5,1
TULCEA	77434	100,0	15913	20,6	56761	73,3	149	0,2	1002	1,3	4760	6,1
VASLUI	86871	100,0	19740	22,7	59222	68,2	197	0,2	1385	1,6	7909	9,1
VALCEA	119504	100,0	25412	21,3	86612	72,5	138	0,1	1888	1,6	7480	6,3
VRANCEA	94429	100,0	18962	20,1	71826	76,1	51	0,1	1594	1,7	3641	3,9
MUN. BUCURESTI	1526982	100,0	288167	18,9	1135831	74,4	2641	0,2	51406	3,4	102984	6,7
ILFOV	95284	100,0	23317	24,5	66065	69,3	21	0,0	1879	2,0	5902	6,2

*) according to the effect of Law No. 314/2001, art.1 și art. 6

*** Less than 0,01%

Table no.3

**Number and structure of incorporations in the Trade Register, by years,
September 2006**

Period (year, month)	Registered companies		Percentage	
	No.	%	%	
0	1	2	3	
Total, 31 February 2006, out of which	1519138	93,53		
Year 1990	81	0,01		
Year 1991	95840	6,31		
Year 1992	137456	9,05		
Year 1993	117078	7,71		
Year 1994	137445	9,05		
Year 1995	65479	4,31		
Year 1996	62089	4,09		
Year 1997	55663	3,66		
Year 1998	63878	4,20		
Year 1999	57197	3,77		
Year 2000	57291	3,77		
Year 2001	61265	4,03		
Year 2002	84780	5,58		
Year 2003	123582	8,14		
Year 2004	144284	9,50		
Year 2005	157375	10,36		
Year 2006 (I - XII) out of which :	98355		110,3	
January	8797		8,9	
February	12605		12,8	
March	14410		14,7	
April	10806		11,0	
May	10051		10,2	
June	12109		12,3	
July	10289		10,5	
August	10130		10,3	
September	10130		10,30	

Note: Column 2 reveals the annual structure of incorporations; column 3 reveals the structure by months during the current year.

*** Less than 0,01%

Diagram no.1

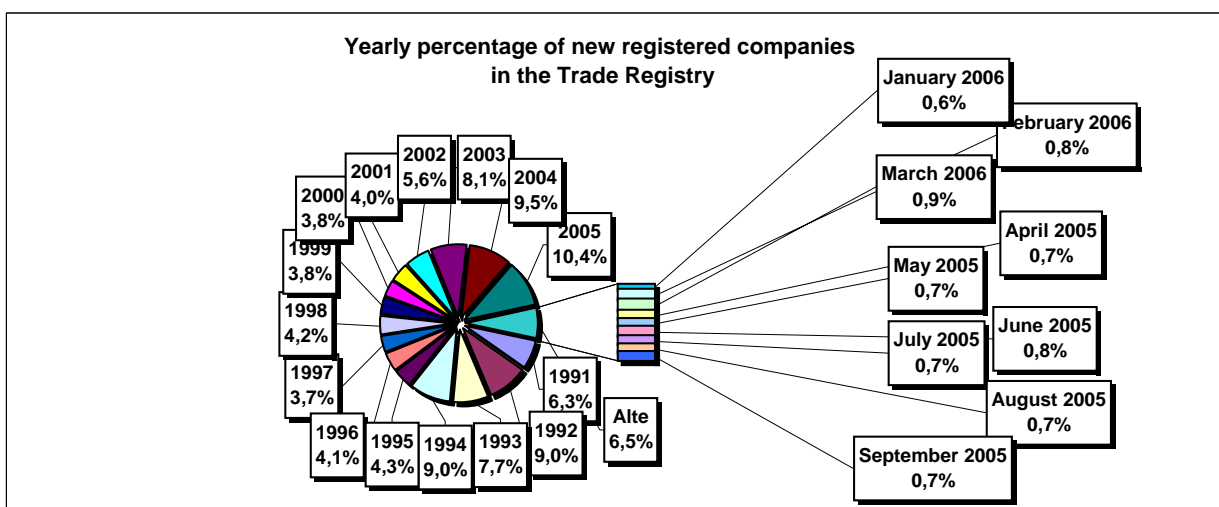


Table no. 4

The number of incorporations in the Trade Register, by counties and sources of capital, in the period December 1990 - September 2006

Counties	Total		out of which:						Ranking by: *
			Private capital			State majority capital		Mixed capital (state+private)	
			out of which:			out of which:		Companies	
			PF+AF	Companies	OC	RA	Companies	Companies	
No.	%	No.	No.	No.	No.	No.	No.		
0	1	2	3	4	5	6	7	8	9
Total ROMÂNIA	1519138	100,0	390312	1111169	5394	1334	2361	8568	X
ALBA	23705	1,6	8169	15141	141	37	47	170	24
ARAD	37029	2,4	14225	22248	157	26	40	333	15
ARGES	39189	2,6	12776	26035	168	29	29	152	11
BACAU	38640	2,5	12967	25215	158	35	42	223	13
BIHOR	44836	3,0	9717	34567	146	37	62	307	8
BISTRITA-NASAUD	18608	1,2	6686	11667	98	19	29	109	33
BOTOSANI	18912	1,2	8596	9882	122	21	172	119	31
BRASOV	47125	3,1	9649	37062	114	43	87	170	6
BRAILA	21256	1,4	5308	15616	96	28	43	165	28
BUZAU	28118	1,9	8172	19605	142	26	42	131	21
CARAS-SEVERIN	18769	1,2	6574	11858	102	33	65	137	32
CALARASI	15469	1,0	4546	10647	86	18	77	95	38
CLUJ	69116	4,5	17352	51261	150	52	40	261	2
CONSTANTA	64170	4,2	12328	50999	203	51	49	540	3
COVASNA	13006	0,9	4370	8404	67	24	32	109	41
DAMBOVITA	28458	1,9	13175	14892	134	29	75	153	20
DOLJ	40511	2,7	8073	31977	162	40	57	202	9
GALATI	36244	2,4	7055	28830	135	30	51	143	16
GIURGIU	12293	0,8	2937	9035	80	22	109	110	42
GORJ	18356	1,2	4313	13626	184	50	83	100	34
HARGHITA	22823	1,5	8858	13584	86	23	43	229	26
HUNEDOARA	31457	2,1	8300	22665	81	37	92	282	18
IALOMITA	14385	0,9	5548	8611	74	15	46	91	40
IASI	46413	3,1	12658	33143	164	34	70	344	7
MARAMURES	39282	2,6	16137	22824	122	37	39	123	10
MEHEDINTI	17489	1,2	5524	11740	82	19	26	98	35
MURES	38348	2,5	14278	23683	156	30	34	167	14
NEAMT	33900	2,2	12554	20961	161	29	30	165	17
OLT	21937	1,4	8764	12799	161	26	64	123	27
PRAHOVA	50078	3,3	15315	34196	177	50	69	271	5
SALAJ	14570	1,0	5702	8651	107	19	28	63	39
SATU MARE	25438	1,7	8235	16920	88	19	42	134	22
SIBIU	29124	1,9	7022	21685	119	32	108	158	19
SUCEAVA	38913	2,6	18737	19660	202	30	64	220	12
TELEORMAN	17309	1,1	5967	10943	152	21	44	182	36
TIMIS	52352	3,4	8247	43513	140	38	68	346	4
TULCEA	15913	1,0	5435	10140	66	18	42	212	37
VASLUI	19740	1,3	9662	9777	109	16	41	135	29
VALCEA	25412	1,7	10077	14977	168	40	37	113	23
VRANCEA	18962	1,2	5787	12914	104	16	27	114	30
MUN. BUCURESTI	288166	19,0	17467	269235	138	115	103	1108	1
ILFOV	23317	1,5	3050	19981	92	20	13	161	25

*) The total number of incorporations (col 1)

*** Less than 0,01%

Table no. 5

**The number of incorporations in the Trade Register,
by counties and categories, during the period of
December 1990 - September 2006**

County	Total		out of which:						RA	OC
			PF+AF	companies: 1122098						
	SNC	SCS		SRL	SA	No.	No.			
	No.	%	No.	No.	No.			No.	No.	No.
0	1	2	3	4	5	6	7	8	9	
Total ROMÂNIA	1519138	100,0	390312	32648	1562	1056365	31517	1334	5394	
ALBA	23705	1,6	8169	890	11	13912	545	37	141	
ARAD	37028	2,4	14225	53	11	21892	663	26	157	
ARGES	39189	2,6	12776	107	14	25296	799	29	168	
BACAU	38640	2,5	12967	1299	4	23463	713	35	158	
BIHOR	44836	3,0	9717	125	47	33883	881	37	146	
BISTRITA-NASAUD	18608	1,2	6686	146	21	11231	407	19	98	
BOTOSANI	18912	1,2	8596	468	1	9260	444	21	122	
BRASOV	47125	3,1	9649	239	20	36232	828	43	114	
BRAILA	21256	1,4	5308	376	12	14927	509	28	96	
BUZAU	28118	1,9	8172	3747	46	15428	557	26	142	
CARAS-SEVERIN	18769	1,2	6574	117	8	11475	460	33	102	
CALARASI	15469	1,0	4546	609	3	9861	346	18	86	
CLUJ	69116	4,5	17352	2111	18	48220	1213	52	150	
CONSTANTA	64170	4,2	12328	311	23	49807	1447	51	203	
COVASNA	13006	0,9	4370	148	4	8097	296	24	67	
DAMBOVITA	28458	1,9	13175	60	8	14571	481	29	134	
DOLJ	40511	2,7	8073	1560	8	29813	855	40	162	
GALATI	36244	2,4	7055	1574	6	26621	823	30	135	
GIURGIU	12293	0,8	2937	35	8	8895	316	22	80	
GORJ	18356	1,2	4313	29	1	13298	481	50	184	
HARGHITA	22823	1,5	8858	62	6	13307	481	23	86	
HUNEDOARA	31457	2,1	8300	1166	98	21119	656	37	81	
IALOMITA	14385	0,9	5548	266	11	8132	339	15	74	
IASI	46413	3,1	12658	506	111	31960	978	34	164	
MARAMURES	39282	2,6	16137	1926	23	20458	578	37	122	
MEHEDINTI	17489	1,2	5524	427	3	11111	323	19	82	
MURES	38348	2,5	14278	37	34	23170	643	30	156	
NEAMT	33900	2,2	12554	3293	30	17179	654	29	161	
OLT	21937	1,4	8764	1611	1	10894	480	26	161	
PRAHOVA	50078	3,3	15315	3122	14	30535	865	50	177	
SALAJ	14570	1,0	5702	600	4	7858	280	19	107	
SATU MARE	25438	1,7	8235	283	5	16347	461	19	88	
SIBIU	29124	1,9	7022	775	48	20493	635	32	119	
SUCEAVA	38913	2,6	18737	438	8	18922	576	30	202	
TELEORMAN	17309	1,1	5967	272	399	10095	403	21	152	
TIMIS	52352	3,4	8247	607	27	42075	1218	38	140	
TULCEA	15913	1,0	5435	1363	114	8449	468	18	66	
VASLUI	19740	1,3	9662	90	11	9455	397	16	109	
VALCEA	25412	1,7	10077	364	6	14286	471	40	168	
VRANCEA	18962	1,2	5787	356	10	12249	440	16	104	
MUN. BUCURESTI	288167	19,0	17467	1031	295	262585	6535	115	138	
ILFOV	23317	1,5	3050	49	30	19504	572	20	92	

Table no. 6

**The number of incorporations in the Trade Register, by field of activity*
during the period of December 1990 - September 2006**

CAEN segment	Field of activity	Total		out of which:						RA	OC
				PF+AF	companies: 1122098						
		No.	%		No.	SNC	SCS	SRL	SA	No.	No.
				No.		No.	No.	No.			
0	1	2	3	4	5	6	7	8	9	10	
	Total ROMANIA	1519138	100,0	390312	32648	1562	1056365	31517	1334	5394	
1	Agriculture, hunting and related service activities	61817	4,1	14911	2024	44	40891	3778	52	117	
2	Forestry, logging and related service activities	8030	0,5	1038	152	3	6521	222	86	8	
5	Fishing, fish farming and related service activities	2924	0,2	1679	17	3	1172	53			
10	Mining of coal and lignite; extraction of peat	112	0,0	2			74	32	4		
11	Extraction of crude petroleum and natural gas; service activities incidental to oil and gas extraction, excluding surveying	326	0,0	3	1		153	123	46		
12	Mining of uranium and thorium ores	133	0,0	32			95	6			
13	Mining of metal ores	529	0,0	163			303	55	8		
14	Other mining and quarrying	1524	0,1	109	9	1	1235	167	2	1	
15	Manufacture of food products and beverages	72838	4,8	14174	3260	149	53151	1851	5	248	
16	Manufacture of tobacco products	287	0,0	47			208	31	1		
17	Manufacture of textiles	11600	0,8	2343	556	16	8134	406		145	
18	Manufacture of wearing apparel; dressing and dyeing of fur	20612	1,4	4670	875	38	14367	356	1	305	
19	Tanning and dressing of leather; manufacture of luggage, handbags, saddlery, harness and footwear	5204	0,3	902	112	6	4009	123	1	51	
20	Manufacture of wood and of products of wood and cork, except furniture; manufacture of articles of straw and plaiting materials	24632	1,6	8720	575	29	14759	498	9	42	
21	Manufacture of pulp, paper and paper products	1753	0,1	120	21	1	1500	98		13	
22	Publishing, printing and reproduction of recorded media	11584	0,8	941	317	21	9879	402	14	10	
23	Manufacture of coke, refined petroleum products and nuclear fuel	258	0,0	24			198	34	2		
24	Manufacture of chemicals and chemical products	3642	0,2	119	89	1	3044	377	6	6	
25	Manufacture of rubber and plastic products	6057	0,4	561	313	7	4894	257		24	
26	Manufacture of other non-metallic mineral products	8908	0,6	2715	212	6	5573	383	5	14	
27	Manufacture of basic metals	2413	0,2	168	39	3	1986	207	3	7	
28	Manufacture of fabricated metal products, except machinery and equipment	16503	1,1	3965	361	23	11361	720	11	62	
29	Manufacture of machinery and equipment n.e.c.	3742	0,2	105	44	7	3142	420	19	5	
30	Manufacture of office machinery and computers	1761	0,1	15	25	4	1637	80			
31	Manufacture of electrical machinery and apparatus n.e.c.	1902	0,1	109	44	6	1593	144		6	
32	Manufacture of radio, television and communication equipment and apparatus	847	0,1	57	14	4	698	73		1	
33	Manufacture of medical, precision and optical instruments, watches and clocks	2517	0,2	600	17	2	1791	103		4	
34	Manufacture of motor vehicles, trailers and semi-trailers	892	0,1	30	31	3	703	123		2	
35	Manufacture of other transport equipment	1865	0,1	278	86	7	1298	121	73	2	
36	Manufacture of furniture; manufacturing n.e.c.	15103	1,0	4316	284	16	9988	336	5	158	
37	Recycling	4767	0,3	422	51	5	4116	172		1	
40	Electricity, gas, steam and hot water supply	2882	0,2	834	3	1	1449	507	88		
41	Collection, purification and distribution of water	3541	0,2	1622	2		1648	196	73		
45	Construction	87380	5,8	23674	611	42	60499	2424	53	77	

Table no. 6
(continuing)

**The number of incorporations in the Trade Register, by field of activity*
and categories, during the period of December 1990 - September 2006**

CAEN segment	Field of activity	Total		out of which:						
				PF+AF	companies: 1122098				RA	OC
					SNC	SCS	SRL	SA		
					No.	No.	No.	No.		
0	1	2	3	4	5	6	7	8	9	10
	Total ROMÂNIA	1519138	100,0	390312	32648	1562	1056365	31517	1334	5394
50	Sale, maintenance and repair of motor vehicles and motorcycles; retail sale of automotive fuel	52983	3,5	8351	1244		42282	1024	6	42
51	Wholesale trade and commission trade, except of motor vehicles and motorcycles	198559	13,1	17227	4524	150	173057	3284	35	282
52	Retail trade, except of motor vehicles and motorcycles; repair of personal and household goods	492574	32,4	174619	11914	557	300611	2485	5	2382
55	Hotels and restaurants	58728	3,9	14075	1635	126	41938	786	73	95
60	Land transport; transport via pipelines	78476	5,2	35168	844	37	41331	1053	33	10
61	Water transport	846	0,1	157	82	8	464	64	70	1
62	Air transport	292	0,0	18			217	47	10	
63	Supporting and auxiliary transport activities; activities of travel agencies	10031	0,7	647	220	14	8605	438	96	11
64	Post and telecommunications	6796	0,4	549	11	1	5924	297	11	3
65	Financial intermediation, except insurance and pension funding	6150	0,4	143	15		2725	2232	2	1033
66	Insurance and pension funding, except compulsory social security	1997	0,1	609	1		507	879		1
67	Activities auxiliary to financial intermediation	6505	0,4	1256	7	2	4950	282		8
70	Real estate activities	20527	1,4	713	28	9	19173	580	17	7
71	Renting of machinery and equipment without operator and of personal and household goods	3226	0,2	639	116	8	2299	93	70	1
72	Computer and related activities	21926	1,4	4087	119	13	17319	383	2	3
73	Research and development	1670	0,1	239	11	2	1202	171	43	2
74	Other business activities	103634	6,8	21364	792	74	79595	1642	106	60
75	Public administration and defence; compulsory social security	358	0,0	89	5		216	26	21	1
80	Education	6329	0,4	3171	62	5	3026	65		
85	Health and social work	15772	1,0	2105	233	15	13333	82	3	1
90	Sewage and refuse disposal, sanitation and similar activities	860	0,1	90	13	2	630	105	18	
91	Activities of membership organizations n.e.c.	210	0,0	92	1		99	15		3
92	Recreational, cultural and sporting activities	15804	1,0	4175	202	14	11035	296	70	12
93	Other service activities	25136	1,7	10731	418	42	13437	305	76	126
95	Activities of households as employers of domestic staff	788	0,1	477	6	1	300	3		1
96	Extra-territorial organizations and bodies	10	0,0	10						

*)Field of activity declared when registered, according to CAEN classification

Table no. 7

**Operations carried on with the Trade Registers,
by counties and categories,
in September 2006**

County	Total of operations carried on		out of which:							
			New incorporations		Changes in statutory documents		out of which: of liquidation, dissolution		Strike off companies	
	No.	%	No.	%	No.	%	No.	%	No.	%
0	1	2	3	4	5	6	7	8	9	10
Total ROMÂNIA	81150	111,3	9158	11,3	70616	87,0	4404	5,4	10534	13,0
ALBA	874	100,0	160	18,3	847	96,9	4	0,5	27	3,1
ARAD	1368	100,0	247	18,1	1318	96,3	10	0,7	50	3,7
ARGES	1010	100,0	227	22,5	974	96,4	106	10,5	36	3,6
BACAU	1055	100,0	184	17,4	1016	96,3	224	21,2	39	3,7
BIHOR	2268	100,0	299	13,2	2136	94,2	36	1,6	132	5,8
BISTRITA-NASAUD	555	100,0	108	19,5	512	92,3	101	18,2	43	7,7
BOTOSANI	391	100,0	113	28,9	355	90,8	1	0,3	36	9,2
BRASOV	1854	100,0	295	15,9	1792	96,7	33	1,8	62	3,3
BRAILA	2951	100,0	102	3,5	2927	99,2	14	0,5	24	0,8
BUZAU	1470	100,0	148	10,1	1372	93,3	491	33,4	98	6,7
CARAS-SEVERIN	538	100,0	123	22,9	529	98,3	17	3,2	9	1,7
CALARASI	197	100,0	89	45,2	193	98,0	7	3,6	4	2,0
CLUJ	5385	100,0	502	9,3	4025	74,7	57	1,1	1360	25,3
CONSTANTA	2746	100,0	373	13,6	2701	98,4	13	0,5	45	1,6
COVASNA	369	100,0	66	17,9	303	82,1	2	0,5	66	17,9
DAMBOVITA	1063	100,0	186	17,5	1017	95,7	292	27,5	46	4,3
DOLJ	1299	100,0	242	18,6	1268	97,6	17	1,3	31	2,4
GALATI	1236	100,0	221	17,9	1195	96,7	184	14,9	41	3,3
GIURGIU	388	100,0	83	21,4	379	97,7	8	2,1	9	2,3
GORJ	810	100,0	110	13,6	775	95,7	11	1,4	35	4,3
HARGHITA	795	100,0	193	24,3	769	96,7	102	12,8	26	3,3
HUNEDOARA	3069	100,0	180	5,9	3042	99,1	4	0,1	27	0,9
IALOMITA	584	100,0	70	12,0	568	97,3			16	2,7
IASI	2068	100,0	349	16,9	2043	98,8	54	2,6	25	1,2
MARAMURES	1886	100,0	216	11,5	1821	96,6	146	7,7	65	3,4
MEHEDINTI	914	100,0	82	9,0	877	96,0	4	0,4	37	4,0
MURES	2089	100,0	194	9,3	1665	79,7	571	27,3	424	20,3
NEAMT	5063	100,0	192	3,8	3029	59,8	105	2,1	2034	40,2
OLT	451	100,0	94	20,8	430	95,3	28	6,2	21	4,7
PRAHOVA	2165	100,0	336	15,5	1932	89,2	629	29,1	233	10,8
SALAJ	685	100,0	111	16,2	654	95,5	45	6,6	31	4,5
SATU MARE	4407	100,0	201	4,6	2624	59,5	183	4,2	1783	40,5
SIBIU	3270	100,0	182	5,6	3182	97,3	18	0,6	88	2,7
SUCEAVA	1890	100,0	194	10,3	1691	89,5	271	14,3	199	10,5
TELEORMAN	292	100,0	82	28,1	285	97,6	88	30,1	7	2,4
TIMIS	2208	100,0	380	17,2	2118	95,9	12	0,5	90	4,1
TULCEA	2083	100,0	110	5,3	1205	57,8	184	8,8	878	42,2
VASLUI	449	100,0	102	22,7	415	92,4	1	0,2	34	7,6
VALCEA	612	100,0	115	18,8	578	94,4	6	1,0	34	5,6
VRANCEA	1084	100,0	123	11,3	1056	97,4	7	0,6	28	2,6
MUN. BUCURESTI	15740	100,0	1550	9,8	13497	85,7	315	2,0	2243	14,3
ILFOV	1519	100,0	224	14,7	1501	98,8	3	0,2	18	1,2

*) by effect of implementation of Law no. 314/2001, art.1 and art. 6

*** Less than 0,01%

Table no. 8

**The number of incorporations in the Trade Register,
by counties and sources of capital,
in September 2006**

County	Total		out of which:					Ranking by: *	
			Private capital			State majority capital			Mixed capital (state+private)
			out of which:			out of which:			
			PF+AF	Companies	OC	RA	Companies		Companies
No.	%	No.	No.	No.	No.	No.	No.		
0	1	2	3	4	5	6	7	8	9
Total ROMÂNIA	9158	100,0	2502	6653	1	1		1	X
ALBA	160	1,7	47	112		1			24
ARAD	247	2,7	75	172					9
ARGES	227	2,5	56	171					11
BACAU	184	2,0	54	130					21
BIHOR	299	3,3	104	195					7
BISTRITA-NASAUD	108	1,2	27	81					33
BOTOSANI	113	1,2	54	59					29
BRASOV	295	3,2	83	212					8
BRAILA	102	1,1	34	68					34
BUZAU	148	1,6	38	110					25
CARAS-SEVERIN	123	1,3	34	89					26
CALARASI	89	1,0	32	57					37
CLUJ	502	5,5	175	327					2
CONSTANTA	373	4,1	71	302					4
COVASNA	66	0,7	28	38					42
DAMBOVITA	186	2,0	48	138					20
DOLJ	242	2,6	49	193					10
GALATI	221	2,4	75	146					13
GIURGIU	83	0,9	19	64					38
GORJ	110	1,2	38	72					31
HARGHITA	193	2,1	103	90					18
HUNEDOARA	180	2,0	52	128					23
IALOMITA	70	0,8	19	51					41
IASI	349	3,8	80	269					5
MARAMURES	216	2,4	75	141					14
MEHEDINTI	82	0,9	21	61					39
MURES	194	2,1	72	121	1				16
NEAMT	192	2,1	71	121					19
OLT	94	1,0	25	69					36
PRAHOVA	336	3,7	119	217					6
SALAJ	111	1,2	48	63					30
SATU MARE	201	2,2	94	107					15
SIBIU	182	2,0	46	136					22
SUCEAVA	194	2,1	70	124					17
TELEORMAN	82	0,9	32	50					40
TIMIS	380	4,1	88	291				1	3
TULCEA	110	1,2	58	52					32
VASLUI	102	1,1	33	69					35
VALCEA	115	1,3	37	78					28
VRANCEA	123	1,3	32	91					27
MUN. BUCURESTI	1550	16,9	146	1404					1
ILFOV	224	2,4	40	184					12

*) The total number of incorporations (col 1)

*** Less than 0,01%

Table no.9

**The number of incorporations in the Trade Register,
by counties and category
in September 2006**

County	Total		out of which:						RA	OC
			PF+AF	companies: 6654						
	SNC	SCS		SRL	SA	No.	No.			
	No.	%	No.	No.	No.			No.	No.	No.
0	1	2	3	4	5	6	7	8	9	
Total ROMÂNIA	9158	100,0	2502	1		6575	78	1	1	
ALBA	160	1,7	47	1		108	3	1		
ARAD	247	2,7	75			167	5			
ARGES	227	2,5	56			170	1			
BACAU	184	2,0	54			128	2			
BIHOR	299	3,3	104			194	1			
BISTRITA-NASAUD	108	1,2	27			80	1			
BOTOSANI	113	1,2	54			59				
BRASOV	295	3,2	83			212				
BRAILA	102	1,1	34			67	1			
BUZAU	148	1,6	38			109	1			
CARAS-SEVERIN	123	1,3	34			87	2			
CALARASI	89	1,0	32			56	1			
CLUJ	502	5,5	175			326	1			
CONSTANTA	373	4,1	71			300	2			
COVASNA	66	0,7	28			37	1			
DAMBOVITA	186	2,0	48			137	1			
DOLJ	242	2,6	49			190	3			
GALATI	221	2,4	75			145	1			
GIURGIU	83	0,9	19			62	2			
GORJ	110	1,2	38			69	3			
HARGHITA	193	2,1	103			89	1			
HUNEDOARA	180	2,0	52			127	1			
IALOMITA	70	0,8	19			50	1			
IASI	349	3,8	80			266	3			
MARAMURES	216	2,4	75			140	1			
MEHEDINTI	82	0,9	21			60	1			
MURES	194	2,1	72			119	2		1	
NEAMT	192	2,1	71			120	1			
OLT	94	1,0	25			68	1			
PRAHOVA	336	3,7	119			217				
SALAJ	111	1,2	48			63				
SATU MARE	201	2,2	94			105	2			
SIBIU	182	2,0	46			135	1			
SUCEAVA	194	2,1	70			120	4			
TELEORMAN	82	0,9	32			49	1			
TIMIS	380	4,1	88			288	4			
TULCEA	110	1,2	58			51	1			
VASLUI	102	1,1	33			69				
VALCEA	115	1,3	37			74	4			
VRANCEA	123	1,3	32			90	1			
MUN. BUCURESTI	1550	16,9	146			1390	14			
ILFOV	224	2,4	40			182	2			

Table no. 10

**The number of incorporations in the Trade Register, by field of activity*
and categories in September 2006**

CAEN segment	Field of activity	Total		out of which:						
				PF+AF	companies: 6654				RA	OC
		SNC	SCS		SRL	SA				
		No.	%	No.	No.	No.	No.	No.	No.	
0	1	2	3	4	5	6	7	8	9	10
	Total ROMÂNIA	9158	100,0	2502	1		6575	78	1	1
1	Agriculture, hunting and related service activities	244	2,7	127			117			
2	Forestry, logging and related service activities	44	0,5	4			39		1	
5	Fishing, fish farming and related service activities	46	0,5	36			10			
10	Mining of coal and lignite; extraction of peat	1	0,0				1			
11	Extraction of crude petroleum and natural gas; service activities incidental to oil and gas extraction, excluding surveying	3	0,0				2	1		
12	Mining of uranium and thorium ores									
13	Mining of metal ores									
14	Other mining and quarrying	9	0,1				9			
15	Manufacture of food products and beverages	129	1,4	60			67	2		
16	Manufacture of tobacco products	1	0,0				1			
17	Manufacture of textiles	22	0,2	5			17			
18	Manufacture of wearing apparel; dressing and dyeing of fur	65	0,7	21			44			
19	Tanning and dressing of leather; manufacture of luggage, handbags, saddlery, harness and footwear	22	0,2	4			18			
20	Manufacture of wood and of products of wood and cork, except furniture; manufacture of articles of straw and plaiting materials	103	1,1	41			62			
21	Manufacture of pulp, paper and paper products	11	0,1	1			10			
22	Publishing, printing and reproduction of recorded media	43	0,5	1			41	1		
23	Manufacture of coke, refined petroleum products and nuclear fuel									
24	Manufacture of chemicals and chemical products	12	0,1				12			
25	Manufacture of rubber and plastic products	30	0,3	1			29			
26	Manufacture of other non-metallic mineral products	52	0,6	19			32	1		
27	Manufacture of basic metals	2	0,0				2			
28	Manufacture of fabricated metal products, except machinery and equipment	85	0,9	26			58	1		
29	Manufacture of machinery and equipment n.e.c.	14	0,2	1			13			
30	Manufacture of office machinery and computers	2	0,0				2			
31	Manufacture of electrical machinery and apparatus n.e.c.	12	0,1	3			9			
32	Manufacture of radio, television and communication equipment and apparatus	4	0,0				4			
33	Manufacture of medical, precision and optical instruments, watches and clocks	19	0,2	1			17	1		
34	Manufacture of motor vehicles, trailers and semi- trailers	3	0,0				3			
35	Manufacture of other transport equipment	14	0,2	6			8			
36	Manufacture of furniture; manufacturing n.e.c.	80	0,9	22			57	1		
37	Recycling	29	0,3	1			28			
40	Electricity, gas, steam and hot water supply	10	0,1				9	1		
41	Collection, purification and distribution of water	1	0,0					1		
45	Construction	1149	12,5	271			875	3		

Table no. 10
(continuance)

**The number of incorporations in the Trade Register, by field of activity*
and categories in September 2006**

CAEN segment	Field of activity	Total		out of which:						
				PF+AF	companies: 6654				RA	OC
		No.	%		No.	SNC	SCS	SRL		
				No.		No.	No.	No.	No.	No.
0	1	2	3	4	5	6	7	8	9	10
	Total ROMÂNIA	9158	100,0	2502	1		6575	78	1	1
50	Sale, maintenance and repair of motor vehicles and motorcycles; retail sale of automotive fuel	268	2,9	57			211			
51	Wholesale trade and commission trade, except of motor vehicles and motorcycles	917	10,0	168			749			
52	Retail trade, except of motor vehicles and motorcycles; repair of personal and household goods	1871	20,4	669			1201			1
55	Hotels and restaurants	381	4,2	53			324	4		
60	Land transport; transport via pipelines	661	7,2	240			421			
61	Water transport	4	0,0	1			3			
62	Air transport									
63	Supporting and auxiliary transport activities; activities of travel agencies	63	0,7	5			58			
64	Post and telecommunications	81	0,9	23			57	1		
65	Financial intermediation, except insurance and pension funding	48	0,5				33	15		
66	Insurance and pension funding, except compulsory social security	29	0,3				1	28		
67	Activities auxiliary to financial intermediation	55	0,6	4			50	1		
70	Real estate activities	416	4,5	9			400	7		
71	Renting of machinery and equipment without operator and of personal and household goods	32	0,3	6			26			
72	Computer and related activities	261	2,8	104			157			
73	Research and development	6	0,1				6			
74	Other business activities	1217	13,3	284	1		924	8		
75	Public administration and defence; compulsory social security									
80	Education	72	0,8	19			53			
85	Health and social work	92	1,0	5			87			
90	Sewage and refuse disposal, sanitation and similar activities	8	0,1				8			
91	Activities of membership organizations n.e.c.									
92	Recreational, cultural and sporting activities	155	1,7	61			93	1		
93	Other service activities	250	2,7	136			114			
95	Activities of households as employers of domestic staff	10	0,1	7			3			
96	Extra-territorial organizations and bodies									

*)Field of activity declared when registered, according to CAEN classification

Table no. 11

**Number of companies registered and the amount
of subscribed capital, by county in September 2006**

County	Total registered companies		Subscribed capital		Average subscribed capital on company
	No.	%	mii RON	%	mii RON
0	1	2	3	4	5
Total ROMÂNIA	6654	100,0	217756,4	100,0	33,0
ALBA	112	1,7	24529,2	11,3	225,0
ARAD	172	2,6	2436,4	1,1	14,2
ARGES	171	2,6	4205,4	1,9	24,6
BACAU	130	2,0	52,6	0,0	0,4
BIHOR	195	2,9	163,0	0,1	0,8
BISTRITA-NASAUD	81	1,2	96,8	0,0	1,2
BOTOSANI	59	0,9	42,6	0,0	0,7
BRASOV	212	3,2	942,1	0,4	4,4
BRAILA	68	1,0	154,2	0,1	2,3
BUZAU	110	1,7	83,1	0,0	0,8
CARAS-SEVERIN	89	1,3	1122,8	0,5	12,8
CALARASI	57	0,9	98,7	0,0	1,8
CLUJ	327	4,9	1261,3	0,6	3,9
CONSTANTA	302	4,5	423,5	0,2	1,4
COVASNA	38	0,6	26,2	0,0	0,7
DAMBOVITA	138	2,1	900,6	0,4	6,5
DOLJ	193	2,9	119,7	0,1	0,6
GALATI	146	2,2	190,8	0,1	1,3
GIURGIU	64	1,0	9461,2	4,3	152,6
GORJ	72	1,1	26,3	0,0	0,4
HARGHITA	90	1,4	231,4	0,1	2,6
HUNEDOARA	128	1,9	138,7	0,1	1,1
IALOMITA	51	0,8	248,4	0,1	5,0
IASI	269	4,0	245,2	0,1	0,9
MARAMURES	141	2,1	42,7	0,0	0,3
MEHEDINTI	61	0,9	13,9	***	0,2
MURES	121	1,8	114,5	0,1	1,0
NEAMT	121	1,8	448,8	0,2	3,7
OLT	69	1,0	51,3	0,0	0,8
PRAHOVA	217	3,3	801,8	0,4	3,7
SALAJ	63	0,9	13535,5	6,2	221,9
SATU MARE	107	1,6	886,6	0,4	8,4
SIBIU	136	2,0	1684,6	0,8	12,5
SUCEAVA	124	1,9	193,3	0,1	1,6
TELEORMAN	50	0,8	41,3	0,0	0,8
TIMIS	292	4,4	857,6	0,4	3,0
TULCEA	52	0,8	1069,8	0,5	21,0
VASLUI	69	1,0	69,9	0,0	1,0
VALCEA	78	1,2	233,7	0,1	3,1
VRANCEA	91	1,4	108,4	0,0	1,2
MUN. BUCURESTI	1404	21,1	23102,5	10,6	16,5
ILFOV	184	2,8	127299,8	58,5	691,8

Note: The average does not include filials because according to the Law no.31/1990 they are not juridical persons

*** Less than 0,01%

Table no. 12

**Number of registered companies and the amount
of subscribed capital by category,
in September 2006**

Company type	Total registered companies		Subscribed capital		Average subscribed capital on company
	No.	%	mii RON	%	mil. RON
0	1	2	3	4	5
Total ROMÂNIA	6654	100,0	217756,4	100,0	33,0
SNC	1	0,0	0,2	***	0,2
SCS					
SA	78	1,2	114136,1	52,4	3566,8
SRL	6575	98,8	103620,1	47,6	15,8
SCA					

Note: The average does not include filials because according to the Law no.31/1990 they are not juridical persons

*** Less than 0,01%

Diagram no.5

