



MINISTRY OF JUSTICE

THE NATIONAL TRADE REGISTER OFFICE

București, Bd. Unirii nr. 74, Bl. J3b, tronson II+III, sector 3; Telefon: +40 21 316.08.04, 316.08.10; Fax: +40 21 316.08.03 Cod poștal: 030837
Website: www.onrc.ro; E-mail: onrc@onrc.ro; Cod de identificare Fiscală: 14942091; înregistrat ca operator date personale sub nr.1350

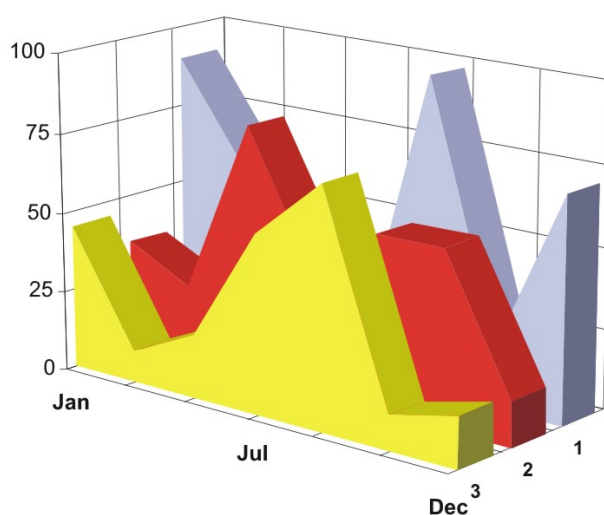
PROCEEDINGS IN THE CENTRAL TRADE REGISTER

STATISTICAL SYNTHESIS

OF

RECORDS IN THE CENTRAL TRADE REGISTER

- the 31th of August 2006 - provisional data -



- ISSUE No. 177 -

**MINISTRY OF JUSTICE
THE NATIONAL TRADE REGISTER OFFICE**

- Operations of incorporation of companies, changes in statutory documents and strike-off of companies are based on Law No.26/1990 reissued, Law No.31/1990, reissued, OUG No.76/2001, reissued and Methodology Norms No. P/608/1998.

- This paper presents the trend in operations registered in The Trade Register Office attached to the law court of Bucharest and in the Trade Register Offices attached to the law court in each county of Romania.

- Information recorded in the Central Trade Register concern operations compulsory by law to be registered in the trade registers within the 42 trade register offices attached to the law courts.

• No part of the content of this publication, in original or in any modified format, July be reproduced, stored in a retrieval system, or transmitted, in any form or by any means, without the prior permission in writing of The Ministry of Justice – The National Trade Register Office.

• The content of this publication July be referred to in articles, studies, books, as supporting or explanatory data under the condition only, the source of the information to be clearly and precisely specified.

Contents

	Page
1 Explanatory Note	1
2.1 Data for December 1990 – July 2006	3
Table no.1 – Operations registered in the Trade Register, by categories during the period of December 1990 – July 2006, in total by country and counties, rate of categories of operations in total operations country	3
Table no.1.a – Operations registered in the Trade Register, by categories during the period of December 1990 – July 2006, in total by country and counties, counties' rate in total country	4
Table no. 3 – Number and structure of incorporations in the Trade Register, by years, during the period of December 1990- July 2006	5
Table no.4 – The number of incorporations in the Trade Register, by counties and sources of capital, in the period December 1990 - July 2006	6
Table no. 5 – The number of incorporations in the Trade Register, by counties and categories, during the period of December 1990 – July 2006	7
Table no. 6 – The number of incorporations in the Trade Register, by field of activity and categories, during the period of December 1990 - July 2006	8
2.2 Data for July 2006	10
Table no. 7 – Operations carried on with the Trade Registers, by counties and categories, in July 2006	10
Table no. 8 – The number of incorporations in the Trade Register, by counties and sources of capital, in July 2006	11
Table no. 9 – The number of incorporations in the Trade Register, by counties and category in July 2006	12
Table no. 10 –The number of incorporations in the Trade Register, by field of activity and categories in July 2006	13
Table no. 11 – Number of companies registered and the amount of subscribed capital, by county in July 2006	15
Table no. 12– Number of registered companies and the amount of subscribed capital by category, in July 2006	16
Diagram no. 5 – Average subscribed capital on company in July 2006	16

Explanatory Note

The Trade Register Office is set-up by Law No. 26/1990, reissued and modified by OUG No. 129/2002, became an active institution since December 1990 and is structured in two levels:

- the national level, represented by the National Trade Register Office organised under the Ministry of Justice
- the local level, represented by the 42 trade register offices attached to the law courts and co-ordinated by the National Trade Register Office

The categories of businessmen compulsory to register in the trade register are:

- natural persons tradesmen and family associations doing usually commercial acts, commercial companies, national companies, companies under state supervision, and co-operative organisations
- subsidiaries registered as commercial companies and legal persons following the legal proceedings of set-up, activity and incorporation according to the type of the legally set-up company.

Usual Terms:

- incorporation – represents the registration of the company in the trade registry awarding the quality of legal person.

- other statutory documents – represent the official registration of the changes occurred in a company's life, such as: changes in headquarters' address, increase or decrease of the issued capital, merger, liquidation, strike-off, etc.

- strike-off – represents the removal of a company from the trade registry, due to dissolution and liquidation, being also the very moment the company loses its quality of legal person. Data also include the companies under the provisions of Law No. 314/2001.

- change of certificate – represents the obligation of companies set-up before OGU No. 76/2001 republished came in force, to request the incorporation certificate and fiscal registration certificate to be replaced with the new registration certificate containing the given unique registration code.

The ratio of these changes is being calculated as a proportion between the effective number of changes and the number of active companies due to operate the change.

- active company from the legal point of view – a company registered in the trade register and which is not affected by any of the situations leading to the temporary or permanent loss of this status (e.g. dissolution, liquidation, strike-off)

- operations represent all the records in the trade registry including incorporations, other statutory documents and strike-off of companies, irrespective of the object of activity, company's type and origin of the subscribed capital (local or foreign investment).

• **Terms used in tables and charts**

➤ **Number of companies:** represents, depending on the specific table, the number of companies incorporated in the related period, the number of companies being struck-off from the trade registry.

➤ **Amount of the subscribed capital:**

- **total, in local currency:** the amount of the subscribed capital resulted from totalising the amount subscribed (in cash and in kind) in local currency (ROL)

➤ **Regional development:**

North-East: Suceava, Botoșani, Neamț, Iași, Bacău, Vaslui.

South-East: Vrancea, Galați, Buzău, Brăila, Tulcea, Constanța.

South-Muntenia: Argeș, Dâmbovița, Prahova, Teleorman, Giurgiu, Călărași, Ialomița.

South-West Oltenia: Gorj, Vâlcea, Dolj, Mehedinți, Olt.

West: Arad, Caraș-Severin, Hunedoara, Timiș.

North-West: Bihor, Bistrița, Cluj, Satu Mare, Sălaj, Maramureș.

Center: Alba, Brașov, Covasna, Harghita, Mureș, Sibiu.

Bucharest-Ilfov: București, Ilfov.

CAEN code – The Classification of Activities in the National Economy was approved by HG No. 656/1997, modified by Order No 601 of the President of National Institute of Statistics being compatible with the international classification used in statistic reports and official documents. Activities are ranked upon homogeneity principle by sections, divisions, groups and classes.

Common abbreviations

- **PF** - Natural Persons Tradesman
- **AF** - Family association
- **SNC** - General Partnership
- **SCS** - Limited Partnership
- **SA** - Joint stock company
- **SRL** - Limited liability company
- **RA** - Company Under State Supervision
- **OC** - Co-operative organisation

Source:

The integrated IT system of the trade registry is designed by The National Trade Registry Office according to the provisions of the related legislation in force. The source of information is the computerised system of the trade registers handled by the Trade Register Offices attached to the law courts.

Table no. 1

**Operations registered in the Trade Register, by categories
during the period of December 1990 - August 2006 in total by country and counties,
- rate of categories of operations in total operations/country -**

Counties	Total of registered operations		out of which :									
			Registered companies		Changes in statutory documents		out of which :				Strike off companies	
	of liquidation, dissolution						out of which :					
	No.	%	No.	%	No.	%	No.	%	No.	%	No.	%
0	1	2	3	4	5	6	7	8	9	10	11	12
Total ROMÂNIA	7307260	100,0	1509980	100,0	5365218	100,0	9911	100,0	165855	100,0	432062	100,0
ALBA	100331	1,4	23545	1,6	72763	1,4	371	3,7	3596	2,2	4023	0,9
ARAD	162838	2,2	36781	2,4	117193	2,2	369	3,7	2974	1,8	8864	2,1
ARGES	173978	2,4	38962	2,6	127022	2,4	197	2,0	4219	2,5	7994	1,9
BACAU	174598	2,4	38456	2,5	125465	2,3	1003	10,1	5280	3,2	10677	2,5
BIHOR	224173	3,1	44537	2,9	167139	3,1	303	3,1	4598	2,8	12497	2,9
BISTRITA-NASAUD	91493	1,3	18500	1,2	67484	1,3	72	0,7	1120	0,7	5509	1,3
BOTOSANI	68972	0,9	18799	1,2	45822	0,9	66	0,7	1563	0,9	4351	1,0
BRASOV	242717	3,3	46830	3,1	185838	3,5	149	1,5	4892	2,9	10049	2,3
BRAILA	91586	1,3	21154	1,4	67616	1,3	61	0,6	2540	1,5	2816	0,7
BUZAU	138602	1,9	27970	1,9	101199	1,9	146	1,5	2109	1,3	9433	2,2
CARAS-SEVERIN	95669	1,3	18646	1,2	69177	1,3	41	0,4	1922	1,2	7846	1,8
CALARASI	62262	0,9	15380	1,0	43906	0,8	79	0,8			2976	0,7
CLUJ	314439	4,3	68614	4,5	238906	4,5	197	2,0			6919	1,6
CONSTANTA	318936	4,4	63797	4,2	231458	4,3	926	9,3	10621	6,4	23681	5,5
COVASNA	67805	0,9	12940	0,9	50923	0,9	18	0,2	1175	0,7	3942	0,9
DAMBOVITA	113215	1,5	28272	1,9	72824	1,4	98	1,0	2951	1,8	12119	2,8
DOLJ	191108	2,6	40269	2,7	139703	2,6	215	2,2	5633	3,4	11136	2,6
GALATI	207581	2,8	36023	2,4	158934	3,0	125	1,3	5370	3,2	12624	2,9
GIURGIU	50945	0,7	12210	0,8	34175	0,6	47	0,5			4560	1,1
GORJ	99814	1,4	18246	1,2	76148	1,4	48	0,5	2667	1,6	5420	1,3
HARGHITA	106323	1,5	22630	1,5	80189	1,5	51	0,5			3504	0,8
HUNEDOARA	134556	1,8	31277	2,1	94043	1,8	126	1,3	2944	1,8	9236	2,1
IALOMITA	70741	1,0	14315	0,9	51504	1,0	78	0,8	1586	1,0	4922	1,1
IASI	248862	3,4	46064	3,1	192423	3,6	597	6,0	4224	2,5	10375	2,4
MARAMURES	148483	2,0	39066	2,6	100803	1,9	159	1,6	2924	1,8	8614	2,0
MEHEDINTI	77849	1,1	17407	1,2	53035	1,0	55	0,6	3085	1,9	7407	1,7
MURES	181650	2,5	38154	2,5	133253	2,5	83	0,8	2942	1,8	10243	2,4
NEAMT	152599	2,1	33708	2,2	108096	2,0	304	3,1	2435	1,5	10795	2,5
OLT	98571	1,3	21843	1,4	68280	1,3	21	0,2	2033	1,2	8448	2,0
PRAHOVA	256668	3,5	49742	3,3	194569	3,6	274	2,8	3934	2,4	12357	2,9
SALAJ	60027	0,8	14459	1,0	41708	0,8	29	0,3	683	0,4	3860	0,9
SATU MARE	115661	1,6	25237	1,7	83001	1,5	26	0,3	2934	1,8	7423	1,7
SIBIU	153348	2,1	28942	1,9	118274	2,2	31	0,3	2583	1,6	6132	1,4
SUCEAVA	176698	2,4	38719	2,6	124018	2,3	29	0,3	2387	1,4	13961	3,2
TELEORMAN	83197	1,1	17227	1,1	62127	1,2	49	0,5	1504	0,9	3843	0,9
TIMIS	274172	3,8	51972	3,4	208135	3,9	271	2,7	7273	4,4	14065	3,3
TULCEA	75241	1,0	15803	1,0	55556	1,0	149	1,5	1002	0,6	3882	0,9
VASLUI	86320	1,2	19638	1,3	58807	1,1	197	2,0	1385	0,8	7875	1,8
VALCEA	118777	1,6	25297	1,7	86034	1,6	138	1,4	1888	1,1	7446	1,7
VRANCEA	93222	1,3	18839	1,2	70770	1,3	51	0,5	1594	1,0	3613	0,8
MUN. BUCURESTI	1509692	20,7	286617	19,0	1122334	20,9	2641	26,6	51406	31,0	100741	23,3
ILFOV	93541	1,3	23093	1,5	64564	1,2	21	0,2	1879	1,1	5884	1,4

*) according to the effect of Law No. 314/2001, art.1 și art. 6

*** Less than 0,01%

Table no. 2

**Operations registered in the Trade Register, by categories
during the period of December 1990 - August 2006, in total by country and counties,
- rate of categories of operations in total operations/country -**

Counties	Total of registered operations		out of which :									
			Registered companies		Changes in statutory documents		out of which :				Strike off companies	
	of liquidation, dissolution						out of which :					
	No.	%	No.	%	No.	%	No.	%	No.	%	No.	%
0	1	2	3	4	5	6	7	8	9	10	11	12
Total ROMÂNIA	7307260	100,0	1509980	20,7	5365218	73,4	9911	0,1	165855	2,3	432062	5,9
ALBA	100331	100,0	23545	23,5	72763	72,5	371	0,4	3596	3,6	4023	4,0
ARAD	162838	100,0	36781	22,6	117193	72,0	369	0,2	2974	1,8	8864	5,4
ARGES	173978	100,0	38962	22,4	127022	73,0	197	0,1	4219	2,4	7994	4,6
BACAU	174598	100,0	38456	22,0	125465	71,9	1003	0,6	5280	3,0	10677	6,1
BIHOR	224173	100,0	44537	19,9	167139	74,6	303	0,1	4598	2,1	12497	5,6
BISTRITA-NASAUD	91493	100,0	18500	20,2	67484	73,8	72	0,1	1120	1,2	5509	6,0
BOTOSANI	68972	100,0	18799	27,3	45822	66,4	66	0,1	1563	2,3	4351	6,3
BRASOV	242717	100,0	46830	19,3	185838	76,6	149	0,1	4892	2,0	10049	4,1
BRAILA	91586	100,0	21154	23,1	67616	73,8	61	0,1	2540	2,8	2816	3,1
BUZAU	138602	100,0	27970	20,2	101199	73,0	146	0,1	2109	1,5	9433	6,8
CARAS-SEVERIN	95669	100,0	18646	19,5	69177	72,3	41	0,0	1922	2,0	7846	8,2
CALARASI	62262	100,0	15380	24,7	43906	70,5	79	0,1			2976	4,8
CLUJ	314439	100,0	68614	21,8	238906	76,0	197	0,1			6919	2,2
CONSTANTA	318936	100,0	63797	20,0	231458	72,6	926	0,3	10621	3,3	23681	7,4
COVASNA	67805	100,0	12940	19,1	50923	75,1	18	0,0	1175	1,7	3942	5,8
DAMBOVITA	113215	100,0	28272	25,0	72824	64,3	98	0,1	2951	2,6	12119	10,7
DOLJ	191108	100,0	40269	21,1	139703	73,1	215	0,1	5633	2,9	11136	5,8
GALATI	207581	100,0	36023	17,4	158934	76,6	125	0,1	5370	2,6	12624	6,1
GIURGIU	50945	100,0	12210	24,0	34175	67,1	47	0,1			4560	9,0
GORJ	99814	100,0	18246	18,3	76148	76,3	48	0,0	2667	2,7	5420	5,4
HARGHITA	106323	100,0	22630	21,3	80189	75,4	51	0,0			3504	3,3
HUNEDOARA	134556	100,0	31277	23,2	94043	69,9	126	0,1	2944	2,2	9236	6,9
IALOMITA	70741	100,0	14315	20,2	51504	72,8	78	0,1	1586	2,2	4922	7,0
IASI	248862	100,0	46064	18,5	192423	77,3	597	0,2	4224	1,7	10375	4,2
MARAMURES	148483	100,0	39066	26,3	100803	67,9	159	0,1	2924	2,0	8614	5,8
MEHEDINTI	77849	100,0	17407	22,4	53035	68,1	55	0,1	3085	4,0	7407	9,5
MURES	181650	100,0	38154	21,0	133253	73,4	83	0,0	2942	1,6	10243	5,6
NEAMT	152599	100,0	33708	22,1	108096	70,8	304	0,2	2435	1,6	10795	7,1
OLT	98571	100,0	21843	22,2	68280	69,3	21	0,0	2033	2,1	8448	8,6
PRAHOVA	256668	100,0	49742	19,4	194569	75,8	274	0,1	3934	1,5	12357	4,8
SALAJ	60027	100,0	14459	24,1	41708	69,5	29	0,0	683	1,1	3860	6,4
SATU MARE	115661	100,0	25237	21,8	83001	71,8	26	0,0	2934	2,5	7423	6,4
SIBIU	153348	100,0	28942	18,9	118274	77,1	31	0,0	2583	1,7	6132	4,0
SUCEAVA	176698	100,0	38719	21,9	124018	70,2	29	0,0	2387	1,4	13961	7,9
TELEORMAN	83197	100,0	17227	20,7	62127	74,7	49	0,1	1504	1,8	3843	4,6
TIMIS	274172	100,0	51972	19,0	208135	75,9	271	0,1	7273	2,7	14065	5,1
TULCEA	75241	100,0	15803	21,0	55556	73,8	149	0,2	1002	1,3	3882	5,2
VASLUI	86320	100,0	19638	22,8	58807	68,1	197	0,2	1385	1,6	7875	9,1
VALCEA	118777	100,0	25297	21,3	86034	72,4	138	0,1	1888	1,6	7446	6,3
VRANCEA	93222	100,0	18839	20,2	70770	75,9	51	0,1	1594	1,7	3613	3,9
MUN. BUCURESTI	1509692	100,0	286617	19,0	1122334	74,3	2641	0,2	51406	3,4	100741	6,7
ILFOV	93541	100,0	23093	24,7	64564	69,0	21	0,0	1879	2,0	5884	6,3

*) according to the effect of Law No. 314/2001, art.1 și art. 6

*** Less than 0,01%

Table no.3

Number and structure of incorporations in the Trade Register, by years, during the period of December 1990 - August 2006

Period (year, month)	Registered companies		Percentage	
	No.	%	%	%
0	1	2	3	
Total, 31 February 2006, out of which	1509980	100,00		
Year 1990	81	0,01		
Year 1991	95840	6,35		
Year 1992	137456	9,10		
Year 1993	117078	7,75		
Year 1994	137445	9,10		
Year 1995	65479	4,34		
Year 1996	62089	4,11		
Year 1997	55663	3,69		
Year 1998	63878	4,23		
Year 1999	57197	3,79		
Year 2000	57291	3,79		
Year 2001	61265	4,06		
Year 2002	84780	5,61		
Year 2003	123582	8,18		
Year 2004	144284	9,56		
Year 2005	157375	10,42		
Year 2006 (I - XII) out of which :	89197		111,4	
January	8797		9,9	
February	12605		14,1	
March	14410		16,2	
April	10806		12,1	
May	10051		11,3	
June	12109		13,6	
July	10289		11,5	
August	10130		11,4	

Note: Column 2 reveals the annual structure of incorporations; column 3 reveals the structure by months during the current year.

*** Less than 0,01%
Diagram no.1

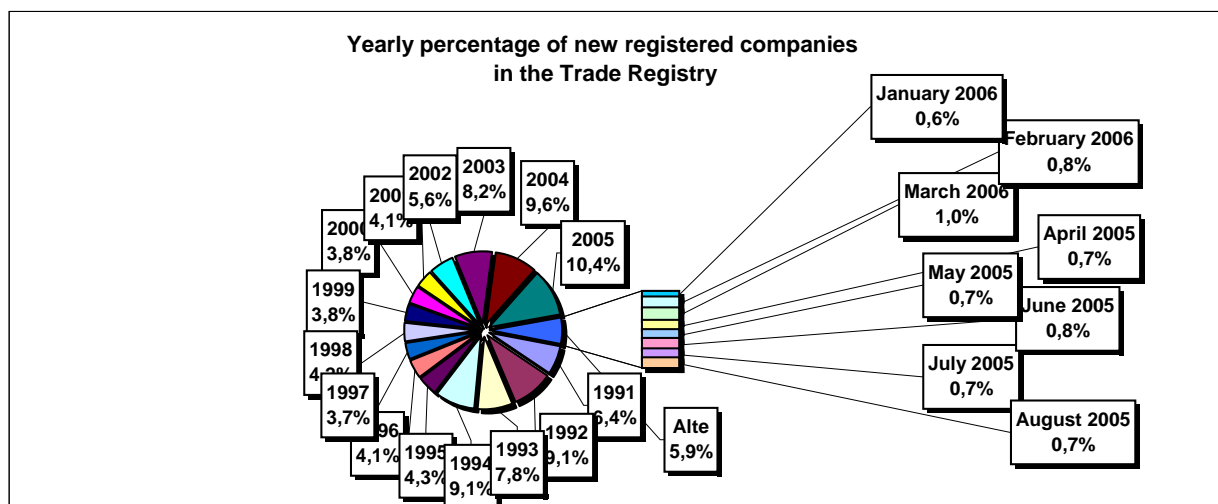


Table no. 4

The number of incorporations in the Trade Register, by counties and sources of capital, in the period December 1990 - August 2006

Counties	Total		out of which:					Ranking by: *	
			Private capital			State majority capital			Mixed capital (state+private)
			out of which:			out of which:			
			PF+AF	Companies	OC	RA	Companies		Companies
No.	%	No.	No.	No.	No.	No.	No.		
0	1	2	3	4	5	6	7	8	9
Total ROMÂNIA	1509980	100,0	387810	1104516	5393	1333	2361	8567	X
ALBA	23545	1,6	8122	15029	141	36	47	170	24
ARAD	36782	2,4	14150	22076	157	26	40	333	15
ARGES	38962	2,6	12720	25864	168	29	29	152	11
BACAU	38456	2,5	12913	25085	158	35	42	223	13
BIHOR	44537	2,9	9613	34372	146	37	62	307	8
BISTRITA-NASAUD	18500	1,2	6659	11586	98	19	29	109	33
BOTOSANI	18799	1,2	8542	9823	122	21	172	119	31
BRASOV	46830	3,1	9566	36850	114	43	87	170	6
BRAILA	21154	1,4	5274	15548	96	28	43	165	28
BUZAU	27970	1,9	8134	19495	142	26	42	131	21
CARAS-SEVERIN	18646	1,2	6540	11769	102	33	65	137	32
CALARASI	15380	1,0	4514	10590	86	18	77	95	38
CLUJ	68614	4,5	17177	50934	150	52	40	261	2
CONSTANTA	63797	4,2	12257	50697	203	51	49	540	3
COVASNA	12940	0,9	4342	8366	67	24	32	109	41
DAMBOVITA	28272	1,9	13127	14754	134	29	75	153	20
DOLJ	40269	2,7	8024	31784	162	40	57	202	9
GALATI	36023	2,4	6980	28684	135	30	51	143	16
GIURGIU	12210	0,8	2918	8971	80	22	109	110	42
GORJ	18246	1,2	4275	13554	184	50	83	100	34
HARGHITA	22630	1,5	8755	13494	86	23	43	229	26
HUNEDOARA	31277	2,1	8248	22537	81	37	92	282	18
IALOMITA	14315	0,9	5529	8560	74	15	46	91	40
IASI	46064	3,1	12578	32874	164	34	70	344	7
MARAMURES	39066	2,6	16062	22683	122	37	39	123	10
MEHEDINTI	17407	1,2	5503	11679	82	19	26	98	35
MURES	38154	2,5	14206	23562	155	30	34	167	14
NEAMT	33708	2,2	12483	20840	161	29	30	165	17
OLT	21843	1,4	8739	12730	161	26	64	123	27
PRAHOVA	49742	3,3	15196	33979	177	50	69	271	5
SALAJ	14459	1,0	5654	8588	107	19	28	63	39
SATU MARE	25237	1,7	8141	16813	88	19	42	134	23
SIBIU	28942	1,9	6976	21549	119	32	108	158	19
SUCEAVA	38719	2,6	18667	19536	202	30	64	220	12
TELEORMAN	17227	1,1	5935	10893	152	21	44	182	36
TIMIS	51972	3,4	8159	43222	140	38	68	345	4
TULCEA	15803	1,0	5377	10088	66	18	42	212	37
VASLUI	19638	1,3	9629	9708	109	16	41	135	29
VALCEA	25297	1,7	10040	14899	168	40	37	113	22
VRANCEA	18839	1,2	5755	12823	104	16	27	114	30
MUN. BUCURESTI	286616	19,0	17321	267831	138	115	103	1108	1
ILFOV	23093	1,5	3010	19797	92	20	13	161	25

*) The total number of incorporations (col 1)

*** Less than 0,01%

Table no. 5

**The number of incorporations in the Trade Register,
by counties and categories, during the period of
December 1990 - August 2006**

County	Total		out of which:						RA	OC
			PF+AF	companies: 1115444						
	SNC	SCS		SRL	SA	No.	No.			
	No.	%	No.	No.	No.			No.	No.	No.
0	1	2	3	4	5	6	7	8	9	
Total ROMÂNIA	1509980	100,0	387810	32647	1562	1049790	31439	1333	5393	
ALBA	23545	1,6	8122	889	11	13804	542	36	141	
ARAD	36781	2,4	14150	53	11	21725	658	26	157	
ARGES	38962	2,6	12720	107	14	25126	798	29	168	
BACAU	38456	2,5	12913	1299	4	23335	711	35	158	
BIHOR	44537	2,9	9613	125	47	33689	880	37	146	
BISTRITA-NASAUD	18500	1,2	6659	146	21	11151	406	19	98	
BOTOSANI	18799	1,2	8542	468	1	9201	444	21	122	
BRASOV	46830	3,1	9566	239	20	36020	828	43	114	
BRAILA	21154	1,4	5274	376	12	14860	508	28	96	
BUZAU	27970	1,9	8134	3747	46	15319	556	26	142	
CARAS-SEVERIN	18646	1,2	6540	117	8	11388	458	33	102	
CALARASI	15380	1,0	4514	609	3	9805	345	18	86	
CLUJ	68614	4,5	17177	2111	18	47894	1212	52	150	
CONSTANTA	63797	4,2	12257	311	23	49507	1445	51	203	
COVASNA	12940	0,9	4342	148	4	8060	295	24	67	
DAMBOVITA	28272	1,9	13127	60	8	14434	480	29	134	
DOLJ	40269	2,7	8024	1560	8	29623	852	40	162	
GALATI	36023	2,4	6980	1574	6	26476	822	30	135	
GIURGIU	12210	0,8	2918	35	8	8833	314	22	80	
GORJ	18246	1,2	4275	29	1	13229	478	50	184	
HARGHITA	22630	1,5	8755	62	6	13218	480	23	86	
HUNEDOARA	31277	2,1	8248	1166	98	20992	655	37	81	
IALOMITA	14315	0,9	5529	266	11	8082	338	15	74	
IASI	46064	3,1	12578	506	111	31694	975	34	164	
MARAMURES	39066	2,6	16062	1926	23	20318	577	37	122	
MEHEDINTI	17407	1,2	5503	427	3	11051	322	19	82	
MURES	38154	2,5	14206	37	34	23051	641	30	155	
NEAMT	33708	2,2	12483	3293	30	17059	653	29	161	
OLT	21843	1,4	8739	1611	1	10826	479	26	161	
PRAHOVA	49742	3,3	15196	3122	14	30318	865	50	177	
SALAJ	14459	1,0	5654	600	4	7795	280	19	107	
SATU MARE	25237	1,7	8141	283	5	16242	459	19	88	
SIBIU	28942	1,9	6976	775	48	20358	634	32	119	
SUCEAVA	38719	2,6	18667	438	8	18802	572	30	202	
TELEORMAN	17227	1,1	5935	272	399	10046	402	21	152	
TIMIS	51972	3,4	8159	607	27	41787	1214	38	140	
TULCEA	15803	1,0	5377	1363	114	8398	467	18	66	
VASLUI	19638	1,3	9629	90	11	9386	397	16	109	
VALCEA	25297	1,7	10040	364	6	14212	467	40	168	
VRANCEA	18839	1,2	5755	356	10	12159	439	16	104	
MUN. BUCURESTI	286617	19,0	17321	1031	295	261195	6521	115	138	
ILFOV	23093	1,5	3010	49	30	19322	570	20	92	

Table no. 6

**The number of incorporations in the Trade Register, by field of activity*
during the period of December 1990 - August 2006**

CAEN segment	Field of activity	Total		out of which:						
				PF+AF	companies: 1115444				RA	OC
		No.	%		No.	SNC	SCS	SRL		
				No.		No.	No.	No.	No.	No.
0	1	2	3	4	5	6	7	8	9	10
	Total ROMANIA	1509980	100,0	387810	32647	1562	1049790	31439	1333	5393
1	Agriculture, hunting and related service activities	61573	4,1	14784	2024	44	40774	3778	52	117
2	Forestry, logging and related service activities	7986	0,5	1034	152	3	6482	222	85	8
5	Fishing, fish farming and related service activities	2878	0,2	1643	17	3	1162	53		
10	Mining of coal and lignite; extraction of peat	111	0,0	2			73	32	4	
11	Extraction of crude petroleum and natural gas; service activities incidental to oil and gas extraction, excluding surveying	323	0,0	3	1		151	122	46	
12	Mining of uranium and thorium ores	133	0,0	32			95	6		
13	Mining of metal ores	529	0,0	163			303	55	8	
14	Other mining and quarrying	1515	0,1	109	9	1	1226	167	2	1
15	Manufacture of food products and beverages	72709	4,8	14114	3260	149	53084	1849	5	248
16	Manufacture of tobacco products	286	0,0	47			207	31	1	
17	Manufacture of textiles	11578	0,8	2338	556	16	8117	406		145
18	Manufacture of wearing apparel; dressing and dyeing of fur	20547	1,4	4649	875	38	14323	356	1	305
19	Tanning and dressing of leather; manufacture of luggage, handbags, saddlery, harness and footwear	5182	0,3	898	112	6	3991	123	1	51
20	Manufacture of wood and of products of wood and cork, except furniture; manufacture of articles of straw and plaiting materials	24529	1,6	8679	575	29	14697	498	9	42
21	Manufacture of pulp, paper and paper products	1742	0,1	119	21	1	1490	98		13
22	Publishing, printing and reproduction of recorded media	11541	0,8	940	317	21	9838	401	14	10
23	Manufacture of coke, refined petroleum products and nuclear fuel	258	0,0	24			198	34	2	
24	Manufacture of chemicals and chemical products	3630	0,2	119	89	1	3032	377	6	6
25	Manufacture of rubber and plastic products	6027	0,4	560	313	7	4865	257		24
26	Manufacture of other non-metallic mineral products	8856	0,6	2696	212	6	5541	382	5	14
27	Manufacture of basic metals	2411	0,2	168	39	3	1984	207	3	7
28	Manufacture of fabricated metal products, except machinery and equipment	16418	1,1	3939	361	23	11303	719	11	62
29	Manufacture of machinery and equipment n.e.c.	3728	0,2	104	44	7	3129	420	19	5
30	Manufacture of office machinery and computers	1759	0,1	15	25	4	1635	80		
31	Manufacture of electrical machinery and apparatus n.e.c.	1890	0,1	106	44	6	1584	144		6
32	Manufacture of radio, television and communication equipment and apparatus	843	0,1	57	14	4	694	73		1
33	Manufacture of medical, precision and optical instruments, watches and clocks	2498	0,2	599	17	2	1774	102		4
34	Manufacture of motor vehicles, trailers and semi-trailers	889	0,1	30	31	3	700	123		2
35	Manufacture of other transport equipment	1851	0,1	272	86	7	1290	121	73	2
36	Manufacture of furniture; manufacturing n.e.c.	15023	1,0	4294	284	16	9931	335	5	158
37	Recycling	4738	0,3	421	51	5	4088	172		1
40	Electricity, gas, steam and hot water supply	2872	0,2	834	3	1	1440	506	88	
41	Collection, purification and distribution of water	3540	0,2	1622	2		1648	195	73	
45	Construction	86231	5,7	23403	611	42	59624	2421	53	77

*)Field of activity declared when registered, according to CAEN classification

Table no. 6
(continuing)

**The number of incorporations in the Trade Register, by field of activity*
and categories, during the period of December 1990 - August 2006**

CAEN segment	Field of activity	Total		out of which:						
				PF+AF	companies: 1115444				RA	OC
					SNC	SCS	SRL	SA		
					No.	No.	No.	No.		
0	1	2	3	4	5	6	7	8	9	10
	Total ROMÂNIA	1509980	100,0	387810	32647	1562	1049790	31439	1333	5393
50	Sale, maintenance and repair of motor vehicles and motorcycles; retail sale of automotive fuel	52715	3,5	8294	1244		42071	1024	6	42
51	Wholesale trade and commission trade, except of motor vehicles and motorcycles	197642	13,1	17059	4524	150	172308	3284	35	282
52	Retail trade, except of motor vehicles and motorcycles; repair of personal and household goods	490703	32,5	173950	11914	557	299410	2485	5	2381
55	Hotels and restaurants	58347	3,9	14022	1635	126	41614	782	73	95
60	Land transport; transport via pipelines	77815	5,2	34928	844	37	40910	1053	33	10
61	Water transport	842	0,1	156	82	8	461	64	70	1
62	Air transport	292	0,0	18			217	47	10	
63	Supporting and auxiliary transport activities; activities of travel agencies	9968	0,7	642	220	14	8547	438	96	11
64	Post and telecommunications	6715	0,4	526	11	1	5867	296	11	3
65	Financial intermediation, except insurance and pension funding	6102	0,4	143	15		2692	2217	2	1033
66	Insurance and pension funding, except compulsory social security	1968	0,1	609	1		506	851		1
67	Activities auxiliary to financial intermediation	6450	0,4	1252	7	2	4900	281		8
70	Real estate activities	20111	1,3	704	28	9	18773	573	17	7
71	Renting of machinery and equipment without operator and of personal and household goods	3194	0,2	633	116	8	2273	93	70	1
72	Computer and related activities	21665	1,4	3983	119	13	17162	383	2	3
73	Research and development	1664	0,1	239	11	2	1196	171	43	2
74	Other business activities	102417	6,8	21080	791	74	78671	1634	106	60
75	Public administration and defence; compulsory social security	358	0,0	89	5		216	26	21	1
80	Education	6257	0,4	3152	62	5	2973	65		
85	Health and social work	15680	1,0	2100	233	15	13246	82	3	1
90	Sewage and refuse disposal, sanitation and similar activities	852	0,1	90	13	2	622	105	18	
91	Activities of membership organizations n.e.c.	210	0,0	92	1		99	15		3
92	Recreational, cultural and sporting activities	15649	1,0	4114	202	14	10942	295	70	12
93	Other service activities	24886	1,6	10595	418	42	13323	305	76	126
95	Activities of households as employers of domestic staff	778	0,1	470	6	1	297	3		1
96	Extra-territorial organizations and bodies	10	0,0	10						

*)Field of activity declared when registered, according to CAEN classification

Table no. 7

**Operations carried on with the Trade Registers,
by counties and categories,
in August 2006**

County	Total of operations carried on		out of which:							
			New incorporations		Changes in statutory documents		out of which: of liquidation, dissolution		Strike off companies	
	No.	%	No.	%	No.	%	No.	%	No.	%
0	1	2	3	4	5	6	7	8	9	10
Total ROMÂNIA	91440	100,0	10130	11,1	73714	80,6	2052	2,2	7596	8,3
ALBA	943	100,0	194	20,6	716	75,9	2	0,2	33	3,5
ARAD	1882	100,0	294	15,6	1536	81,6	11	0,6	52	2,8
ARGES	1405	100,0	261	18,6	1092	77,7	19	1,4	52	3,7
BACAU	1272	100,0	242	19,0	989	77,8	40	3,1	41	3,2
BIHOR	3062	100,0	355	11,6	2450	80,0	12	0,4	257	8,4
BISTRITA-NASAUD	714	100,0	124	17,4	552	77,3	11	1,5	38	5,3
BOTOSANI	569	100,0	115	20,2	412	72,4	7	1,2	42	7,4
BRASOV	3185	100,0	366	11,5	2787	87,5	12	0,4	32	1,0
BRAILA	947	100,0	111	11,7	828	87,4	3	0,3	8	0,8
BUZAU	1661	100,0	167	10,1	1383	83,3	7	0,4	111	6,7
CARAS-SEVERIN	937	100,0	136	14,5	769	82,1	56	6,0	32	3,4
CALARASI	626	100,0	107	17,1	513	81,9	165	26,4	6	1,0
CLUJ	3265	100,0	456	14,0	2770	84,8	18	0,6	39	1,2
CONSTANTA	4224	100,0	405	9,6	3717	88,0	24	0,6	102	2,4
COVASNA	413	100,0	82	19,9	300	72,6			31	7,5
DAMBOVITA	1101	100,0	164	14,9	866	78,7	44	4,0	71	6,4
DOLJ	1757	100,0	248	14,1	1483	84,4	45	2,6	26	1,5
GALATI	1776	100,0	237	13,3	1507	84,9	88	5,0	32	1,8
GIURGIU	2156	100,0	82	3,8	1199	55,6	4	0,2	875	40,6
GORJ	1160	100,0	118	10,2	1022	88,1	113	9,7	20	1,7
HARGHITA	1084	100,0	164	15,1	889	82,0	64	5,9	31	2,9
HUNEDOARA	2126	100,0	182	8,6	1915	90,1	65	3,1	29	1,4
IALOMITA	929	100,0	90	9,7	826	88,9	1	0,1	13	1,4
IASI	3160	100,0	429	13,6	2698	85,4	10	0,3	33	1,0
MARAMURES	5632	100,0	258	4,6	3201	56,8	14	0,2	2173	38,6
MEHEDINTI	1113	100,0	104	9,3	978	87,9	4	0,4	31	2,8
MURES	3110	100,0	282	9,1	2113	67,9	14	0,5	715	23,0
NEAMT	1615	100,0	221	13,7	1349	83,5	9	0,6	45	2,8
OLT	638	100,0	125	19,6	492	77,1	35	5,5	21	3,3
PRAHOVA	3462	100,0	377	10,9	3026	87,4	154	4,4	59	1,7
SALAJ	741	100,0	122	16,5	592	79,9	2	0,3	27	3,6
SATU MARE	1444	100,0	179	12,4	1250	86,6	7	0,5	15	1,0
SIBIU	1334	100,0	177	13,3	1119	83,9	55	4,1	38	2,8
SUCEAVA	2739	100,0	215	7,8	1899	69,3	14	0,5	625	22,8
TELEORMAN	2602	100,0	88	3,4	1561	60,0	6	0,2	953	36,6
TIMIS	2608	100,0	319	12,2	2260	86,7	14	0,5	29	1,1
TULCEA	1001	100,0	101	10,1	881	88,0	13	1,3	19	1,9
VASLUI	658	100,0	119	18,1	510	77,5	70	10,6	29	4,4
VALCEA	1099	100,0	157	14,3	901	82,0	52	4,7	41	3,7
VRANCEA	1186	100,0	117	9,9	991	83,6	8	0,7	78	6,6
MUN. BUCURESTI	18678	100,0	1784	9,6	16229	86,9	741	4,0	665	3,6
ILFOV	1426	100,0	256	18,0	1143	80,2	19	1,3	27	1,9

*) by effect of implementation of Law no. 314/2001, art.1 and art. 6

*** Less than 0,01%

Table no. 8

**The number of incorporations in the Trade Register,
by counties and sources of capital,
in August 2006**

County	Total		out of which:					Rnking by: *	
			Private capital			State majority capital			Mixed capital (state+priva)
			out of which:			out of which:			
			PF+AF	Companies	OC	RA	Companie s		Companie s
No.	%	No.	No.	No.	No.	No.	No.		
0	1	2	3	4	5	6	7	8	9
Total ROMÂNIA	10130	100,0	2932	7197	1				X
ALBA	194	1,9	68	126					19
ARAD	294	2,9	92	202					9
ARGES	261	2,6	68	193					11
BACAU	242	2,4	89	153					15
BIHOR	355	3,5	133	222					7
BISTRITA-NASAUD	124	1,2	41	83					29
BOTOSANI	115	1,1	61	54					34
BRASOV	366	3,6	108	258					6
BRAILA	111	1,1	28	83					35
BUZAU	167	1,6	52	115					23
CARAS-SEVERIN	136	1,3	45	91					27
CALARASI	107	1,1	39	68					36
CLUJ	456	4,5	173	283					2
CONSTANTA	405	4,0	93	312					4
COVASNA	82	0,8	37	45					41
DAMBOVITA	164	1,6	56	108					24
DOLJ	248	2,4	71	177					14
GALATI	237	2,3	48	189					16
GIURGIU	82	0,8	17	65					42
GORJ	118	1,2	45	73					32
HARGHITA	164	1,6	81	83					25
HUNEDOARA	182	1,8	45	137					20
IALOMITA	90	0,9	34	56					39
IASI	429	4,2	127	302					3
MARAMURES	258	2,5	94	164					12
MEHEDINTI	104	1,0	48	56					37
MURES	282	2,8	121	161					10
NEAMT	221	2,2	78	143					17
OLT	125	1,2	46	79					28
PRAHOVA	377	3,7	149	228					5
SALAJ	122	1,2	49	73					30
SATU MARE	179	1,8	65	114					21
SIBIU	177	1,7	28	148	1				22
SUCEAVA	215	2,1	99	116					18
TELEORMAN	88	0,9	29	59					40
TIMIS	319	3,1	44	275					8
TULCEA	101	1,0	52	49					38
VASLUI	119	1,2	44	75					31
VALCEA	157	1,5	65	92					26
VRANCEA	117	1,2	40	77					33
MUN. BUCURESTI	1784	17,6	185	1599					1
ILFOV	256	2,5	45	211					13

*) The total number of incorporations (col 1)

*** Less than 0,01%

Table no.9

**The number of incorporations in the Trade Register,
by counties and category
in August 2006**

County	Total		out of which:						
			PF+AF	companies: 7197				RA	OC
	No.	%		No.	SNC	SCS	SRL		
			No.		No.	No.	No.	No.	No.
0	1	2	3	4	5	6	7	8	9
Total ROMÂNIA	10130	100,0	2932	2		7136	59		1
ALBA	194	1,9	68	1		125			
ARAD	294	2,9	92			202			
ARGES	261	2,6	68			193			
BACAU	242	2,4	89			149	4		
BIHOR	355	3,5	133			221	1		
BISTRITA-NASAUD	124	1,2	41			82	1		
BOTOSANI	115	1,1	61			54			
BRASOV	366	3,6	108			254	4		
BRAILA	111	1,1	28			81	2		
BUZAU	167	1,6	52			114	1		
CARAS-SEVERIN	136	1,3	45			91			
CALARASI	107	1,1	39			68			
CLUJ	456	4,5	173			278	5		
CONSTANTA	405	4,0	93			309	3		
COVASNA	82	0,8	37			45			
DAMBOVITA	164	1,6	56			108			
DOLJ	248	2,4	71			177			
GALATI	237	2,3	48			186	3		
GIURGIU	82	0,8	17			65			
GORJ	118	1,2	45			69	4		
HARGHITA	164	1,6	81			81	2		
HUNEDOARA	182	1,8	45			137			
IALOMITA	90	0,9	34			56			
IASI	429	4,2	127			302			
MARAMURES	258	2,5	94			163	1		
MEHEDINTI	104	1,0	48			55	1		
MURES	282	2,8	121			160	1		
NEAMT	221	2,2	78			143			
OLT	125	1,2	46			78	1		
PRAHOVA	377	3,7	149			228			
SALAJ	122	1,2	49			72	1		
SATU MARE	179	1,8	65			113	1		
SIBIU	177	1,7	28			148			1
SUCEAVA	215	2,1	99			115	1		
TELEORMAN	88	0,9	29			58	1		
TIMIS	319	3,1	44			275			
TULCEA	101	1,0	52			48	1		
VASLUI	119	1,2	44			74	1		
VALCEA	157	1,5	65			91	1		
VRANCEA	117	1,2	40			77			
MUN. BUCURESTI	1784	17,6	185	1		1581	17		
ILFOV	256	2,5	45			210	1		

Table no. 10

**The number of incorporations in the Trade Register, by field of activity*
and categories in August 2006**

CAEN segment	Field of activity	Total		out of which:						
				PF+AF	companies: 7197				RA	OC
		SNC	SCS		SRL	SA				
		No.	%	No.	No.	No.	No.	No.	No.	
0	1	2	3	4	5	6	7	8	9	10
	Total ROMÂNIA	10130	100,0	2932	2		7136	59		1
1	Agriculture, hunting and related service activities	299	3,0	165			134			
2	Forestry, logging and related service activities	36	0,4	7			29			
5	Fishing, fish farming and related service activities	38	0,4	24			14			
10	Mining of coal and lignite; extraction of peat									
11	Extraction of crude petroleum and natural gas; service activities incidental to oil and gas extraction, excluding surveying	2	0,0				2			
12	Mining of uranium and thorium ores									
13	Mining of metal ores	2	0,0				2			
14	Other mining and quarrying	21	0,2	1			20			
15	Manufacture of food products and beverages	129	1,3	59			69	1		
16	Manufacture of tobacco products									
17	Manufacture of textiles	39	0,4	14			25			
18	Manufacture of wearing apparel; dressing and dyeing of fur	87	0,9	21			66			
19	Tanning and dressing of leather; manufacture of luggage, handbags, saddlery, harness and footwear	15	0,1	4			11			
20	Manufacture of wood and of products of wood and cork, except furniture; manufacture of articles of straw and plaiting materials	105	1,0	44			59	2		
21	Manufacture of pulp, paper and paper products	5	0,0				5			
22	Publishing, printing and reproduction of recorded media	52	0,5	4			48			
23	Manufacture of coke, refined petroleum products and nuclear fuel	1	0,0				1			
24	Manufacture of chemicals and chemical products	13	0,1				12	1		
25	Manufacture of rubber and plastic products	27	0,3	1			26			
26	Manufacture of other non-metallic mineral products	48	0,5	11			37			
27	Manufacture of basic metals	6	0,1				6			
28	Manufacture of fabricated metal products, except machinery and equipment	110	1,1	49			61			
29	Manufacture of machinery and equipment n.e.c.	21	0,2	1			20			
30	Manufacture of office machinery and computers	7	0,1				7			
31	Manufacture of electrical machinery and apparatus n.e.c.	6	0,1				6			
32	Manufacture of radio, television and communication equipment and apparatus	1	0,0				1			
33	Manufacture of medical, precision and optical instruments, watches and clocks	20	0,2	6			12	2		
34	Manufacture of motor vehicles, trailers and semi- trailers	2	0,0				2			
35	Manufacture of other transport equipment	14	0,1	3			11			
36	Manufacture of furniture; manufacturing n.e.c.	97	1,0	26			70	1		
37	Recycling	38	0,4	2			36			
40	Electricity, gas, steam and hot water supply	10	0,1				9	1		
41	Collection, purification and distribution of water	3	0,0				2	1		
45	Construction	1412	13,9	315			1094	3		

Table no. 10
(continuance)

**The number of incorporations in the Trade Register, by field of activity*
and categories in August 2006**

CAEN segment	Field of activity	Total		out of which:						
				PF+AF	companies: 7197				RA	OC
					SNC	SCS	SRL	SA		
0	1	No.	%	No.	No.	No.	No.	No.	No.	
		2	3	4	5	6	7	8	9	10
	Total ROMÂNIA	10130	100,0	2932	2		7136	59		1
50	Sale, maintenance and repair of motor vehicles and motorcycles; retail sale of automotive fuel	295	2,9	62			233			
51	Wholesale trade and commission trade, except of motor vehicles and motorcycles	929	9,2	180			747	2		
52	Retail trade, except of motor vehicles and motorcycles; repair of personal and household goods	2145	21,2	854			1289	1		1
55	Hotels and restaurants	497	4,9	142			352	3		
60	Land transport; transport via pipelines	628	6,2	194			433	1		
61	Water transport	8	0,1	4			4			
62	Air transport									
63	Supporting and auxiliary transport activities; activities of travel agencies	69	0,7	9			60			
64	Post and telecommunications	76	0,8	17			57	2		
65	Financial intermediation, except insurance and pension funding	61	0,6				35	26		
66	Insurance and pension funding, except compulsory social security	1	0,0				1			
67	Activities auxiliary to financial intermediation	62	0,6	3	1		58			
70	Real estate activities	428	4,2	9			417	2		
71	Renting of machinery and equipment without operator and of personal and household goods	42	0,4	5			37			
72	Computer and related activities	297	2,9	127			169	1		
73	Research and development	11	0,1	1			9	1		
74	Other business activities	1272	12,6	289	1		975	7		
75	Public administration and defence; compulsory social security									
80	Education	51	0,5	9			42			
85	Health and social work	96	0,9	7			89			
90	Sewage and refuse disposal, sanitation and similar activities	12	0,1	1			10	1		
91	Activities of membership organizations n.e.c.									
92	Recreational, cultural and sporting activities	211	2,1	110			101			
93	Other service activities	260	2,6	143			117			
95	Activities of households as employers of domestic staff	13	0,1	9			4			
96	Extra-territorial organizations and bodies									

*)Field of activity declared when registered, according to CAEN classification

Table no. 11

**Number of companies registered and the amount
of subscribed capital, by county in August 2006**

County	Total registered companies		Subscribed capital		Average subscribed capital on company
	No.	%	mii RON	%	mii RON
0	1	2	3	4	5
Total ROMÂNIA	7197	100,0	171350,6	100,0	23,9
ALBA	126	1,8	40,0	0,0	0,3
ARAD	202	2,8	680,6	0,4	3,4
ARGES	193	2,7	562,9	0,3	2,9
BACAU	153	2,1	4525,9	2,6	30,0
BIHOR	222	3,1	449,7	0,3	2,0
BISTRITA-NASAUD	83	1,2	1143,5	0,7	13,9
BOTOSANI	54	0,8	105,0	0,1	1,9
BRASOV	258	3,6	13850,9	8,1	54,1
BRAILA	83	1,2	68,4	0,0	0,8
BUZAU	115	1,6	2329,8	1,4	20,3
CARAS-SEVERIN	91	1,3	287,7	0,2	3,2
CALARASI	68	0,9	724,5	0,4	10,7
CLUJ	283	3,9	7512,1	4,4	26,9
CONSTANTA	312	4,3	675,2	0,4	2,2
COVASNA	45	0,6	17,8	0,0	0,4
DAMBOVITA	108	1,5	76,5	0,0	0,7
DOLJ	177	2,5	58,5	0,0	0,3
GALATI	189	2,6	782,7	0,5	4,2
GIURGIU	65	0,9	70,3	0,0	1,1
GORJ	73	1,0	346,2	0,2	4,7
HARGHITA	83	1,2	1363,0	0,8	16,6
HUNEDOARA	137	1,9	1817,9	1,1	13,3
IALOMITA	56	0,8	49,8	0,0	0,9
IASI	302	4,2	235,1	0,1	0,8
MARAMURES	164	2,3	402,0	0,2	2,5
MEHEDINTI	56	0,8	252,4	0,1	4,5
MURES	161	2,2	525,7	0,3	3,3
NEAMT	143	2,0	2102,3	1,2	14,7
OLT	79	1,1	365,9	0,2	4,7
PRAHOVA	228	3,2	645,1	0,4	2,8
SALAJ	73	1,0	60,8	0,0	0,8
SATU MARE	114	1,6	342,3	0,2	3,0
SIBIU	148	2,1	701,3	0,4	4,7
SUCEAVA	116	1,6	27282,1	15,9	237,2
TELEORMAN	59	0,8	1725,7	1,0	29,8
TIMIS	275	3,8	1074,2	0,6	3,9
TULCEA	49	0,7	36,1	0,0	0,8
VASLUI	75	1,0	1305,5	0,8	17,4
VALCEA	92	1,3	25,1	0,0	0,3
VRANCEA	77	1,1	489,6	0,3	6,4
MUN. BUCURESTI	1599	22,2	56718,2	33,1	35,7
ILFOV	211	2,9	39522,5	23,1	187,3

Note: The average does not include filials because according to the Law no.31/1990 they are not juridical persons

**** Less than 0,01%*

Table no. 12

**Number of registered companies and the amount
of subscribed capital by category,
in August 2006**

Company type	Total registered companies		Subscribed capital		Average subscribed capital on company
	No.	%	mii RON	%	mil. RON
0	1	2	3	4	5
Total ROMÂNIA	7197	100,0	171350,6	100,0	23,9
SNC	2	0,0	0,3	***	0,2
SCS					
SA	59	0,8	48344,2	28,2	1465,0
SRL	7136	99,2	123006,2	71,8	17,3
SCA					

Note: The average does not include filials because according to the Law no.31/1990 they are not juridical persons

*** Less than 0,01%

Diagram no.5

