



MINISTRY OF JUSTICE

THE NATIONAL TRADE REGISTER OFFICE

București, Bd. Unirii nr. 74, Bl. J3b, tronson II+III, sector 3; Telefon: +40 21 316.08.04, 316.08.10; Fax: +40 21 316.08.03 Cod poștal: 030837
Website: www.onrc.ro; E-mail: onrc@onrc.ro; Cod de identificare Fiscală: 14942091; înregistrat ca operator date personale sub nr.1350

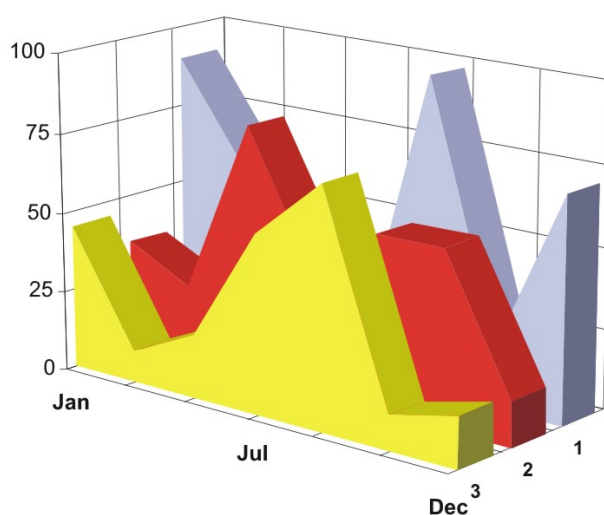
PROCEEDINGS IN THE CENTRAL TRADE REGISTER

STATISTICAL SYNTHESIS

OF

RECORDS IN THE CENTRAL TRADE REGISTER

- the 31th of July 2006 - provisional data -



- ISSUE No. 176 -

**MINISTRY OF JUSTICE
THE NATIONAL TRADE REGISTER OFFICE**

- Operations of incorporation of companies, changes in statutory documents and strike-off of companies are based on Law No.26/1990 reissued, Law No.31/1990, reissued, OUG No.76/2001, reissued and Methodology Norms No. P/608/1998.

- This paper presents the trend in operations registered in The Trade Register Office attached to the law court of Bucharest and in the Trade Register Offices attached to the law court in each county of Romania.

- Information recorded in the Central Trade Register concern operations compulsory by law to be registered in the trade registers within the 42 trade register offices attached to the law courts.

• No part of the content of this publication, in original or in any modified format, July be reproduced, stored in a retrieval system, or transmitted, in any form or by any means, without the prior permission in writing of The Ministry of Justice – The National Trade Register Office.

• The content of this publication July be referred to in articles, studies, books, as supporting or explanatory data under the condition only, the source of the information to be clearly and precisely specified.

Contents

	Page
1 Explanatory Note	1
2.1 Data for December 1990 – July 2006	3
Table no.1 – Operations registered in the Trade Register, by categories during the period of December 1990 – July 2006, in total by country and counties, rate of categories of operations in total operations country	3
Table no.1.a – Operations registered in the Trade Register, by categories during the period of December 1990 – July 2006, in total by country and counties, counties' rate in total country	4
Table no. 3 – Number and structure of incorporations in the Trade Register, by years, during the period of December 1990- July 2006	5
Table no.4 – The number of incorporations in the Trade Register, by counties and sources of capital, in the period December 1990 - July 2006	6
Table no. 5 – The number of incorporations in the Trade Register, by counties and categories, during the period of December 1990 – July 2006	7
Table no. 6 – The number of incorporations in the Trade Register, by field of activity and categories, during the period of December 1990 - July 2006	8
2.2 Data for July 2006	10
Table no. 7 – Operations carried on with the Trade Registers, by counties and categories, in July 2006	10
Table no. 8 – The number of incorporations in the Trade Register, by counties and sources of capital, in July 2006	11
Table no. 9 – The number of incorporations in the Trade Register, by counties and category in July 2006	12
Table no. 10 –The number of incorporations in the Trade Register, by field of activity and categories in July 2006	13
Table no. 11 – Number of companies registered and the amount of subscribed capital, by county in July 2006	15
Table no. 12– Number of registered companies and the amount of subscribed capital by category, in July 2006	16
Diagram no. 5 – Average subscribed capital on company in July 2006	16

Explanatory Note

The Trade Register Office is set-up by Law No. 26/1990, reissued and modified by OUG No. 129/2002, became an active institution since December 1990 and is structured in two levels:

- the national level, represented by the National Trade Register Office organised under the Ministry of Justice
- the local level, represented by the 42 trade register offices attached to the law courts and co-ordinated by the National Trade Register Office

The categories of businessmen compulsory to register in the trade register are:

- natural persons tradesmen and family associations doing usually commercial acts, commercial companies, national companies, companies under state supervision, and co-operative organisations
- subsidiaries registered as commercial companies and legal persons following the legal proceedings of set-up, activity and incorporation according to the type of the legally set-up company.

Usual Terms:

- incorporation – represents the registration of the company in the trade registry awarding the quality of legal person.

- other statutory documents – represent the official registration of the changes occurred in a company's life, such as: changes in headquarters' address, increase or decrease of the issued capital, merger, liquidation, strike-off, etc.

- strike-off – represents the removal of a company from the trade registry, due to dissolution and liquidation, being also the very moment the company loses its quality of legal person. Data also include the companies under the provisions of Law No. 314/2001.

- change of certificate – represents the obligation of companies set-up before OGU No. 76/2001 republished came in force, to request the incorporation certificate and fiscal registration certificate to be replaced with the new registration certificate containing the given unique registration code.

The ratio of these changes is being calculated as a proportion between the effective number of changes and the number of active companies due to operate the change.

- active company from the legal point of view – a company registered in the trade register and which is not affected by any of the situations leading to the temporary or permanent loss of this status (e.g. dissolution, liquidation, strike-off)

- operations represent all the records in the trade registry including incorporations, other statutory documents and strike-off of companies, irrespective of the object of activity, company's type and origin of the subscribed capital (local or foreign investment).

• **Terms used in tables and charts**

➤ **Number of companies:** represents, depending on the specific table, the number of companies incorporated in the related period, the number of companies being struck-off from the trade registry.

➤ **Amount of the subscribed capital:**

- **total, in local currency:** the amount of the subscribed capital resulted from totalising the amount subscribed (in cash and in kind) in local currency (ROL)

➤ **Regional development:**

<i>North-East:</i>	Suceava, Botoșani, Neamț, Iași, Bacău, Vaslui.
<i>South-East:</i>	Vrancea, Galați, Buzău, Brăila, Tulcea, Constanța.
<i>South-Muntenia:</i>	Argeș, Dâmbovița, Prahova, Teleorman, Giurgiu, Călărași, Ialomița.
<i>South-West Oltenia:</i>	Gorj, Vâlcea, Dolj, Mehedinți, Olt.
<i>West:</i>	Arad, Caraș-Severin, Hunedoara, Timiș.
<i>North-West:</i>	Bihor, Bistrița, Cluj, Satu Mare, Sălaj, Maramureș.
<i>Center:</i>	Alba, Brașov, Covasna, Harghita, Mureș, Sibiu.
<i>Bucharest-Ilfov:</i>	București, Ilfov.

CAEN code – The Classification of Activities in the National Economy was approved by HG No. 656/1997, modified by Order No 601 of the President of National Institute of Statistics being compatible with the international classification used in statistic reports and official documents. Activities are ranked upon homogeneity principle by sections, divisions, groups and classes.

Common abbreviations

- **PF** - Natural Persons Tradesman
- **AF** - Family association
- **SNC** - General Partnership
- **SCS** - Limited Partnership
- **SA** - Joint stock company
- **SRL** - Limited liability company
- **RA** - Company Under State Supervision
- **OC** - Co-operative organisation

Source:

The integrated IT system of the trade registry is designed by The National Trade Registry Office according to the provisions of the related legislation in force. The source of information is the computerised system of the trade registers handled by the Trade Register Offices attached to the law courts.

Table no. 1

**Operations registered in the Trade Register, by categories
during the period of December 1990 - July 2006 in total by country and counties,
- rate of categories of operations in total operations/country -**

Counties	Total of registered operations		out of which :									
			Registered companies		Changes in statutory documents		out of which :				Strike off companies	
	of liquidation, dissolution						out of which :					
	No.	%	No.	%	No.	%	No.	%	No.	%	No.	%
0	1	2	3	4	5	6	7	8	9	10	11	12
Total ROMÂNIA	7215820	100,0	1499850	100,0	5291504	100,0	9911	100,0	165855	100,0	424466	100,0
ALBA	99388	1,4	23351	1,6	72047	1,4	371	3,7	3596	2,2	3990	0,9
ARAD	160956	2,2	36487	2,4	115657	2,2	369	3,7	2974	1,8	8812	2,1
ARGES	172573	2,4	38701	2,6	125930	2,4	197	2,0	4219	2,5	7942	1,9
BACAU	173326	2,4	38214	2,5	124476	2,4	1003	10,1	5280	3,2	10636	2,5
BIHOR	221111	3,1	44182	2,9	164689	3,1	303	3,1	4598	2,8	12240	2,9
BISTRITA-NASAUD	90779	1,3	18376	1,2	66932	1,3	72	0,7	1120	0,7	5471	1,3
BOTOSANI	68403	0,9	18684	1,2	45410	0,9	66	0,7	1563	0,9	4309	1,0
BRASOV	239532	3,3	46464	3,1	183051	3,5	149	1,5	4892	2,9	10017	2,4
BRAILA	90639	1,3	21043	1,4	66788	1,3	61	0,6	2540	1,5	2808	0,7
BUZAU	136941	1,9	27803	1,9	99816	1,9	146	1,5	2109	1,3	9322	2,2
CARAS-SEVERIN	94732	1,3	18510	1,2	68408	1,3	41	0,4	1922	1,2	7814	1,8
CALARASI	61636	0,9	15273	1,0	43393	0,8	79	0,8			2970	0,7
CLUJ	311174	4,3	68158	4,5	236136	4,5	197	2,0			6880	1,6
CONSTANTA	314712	4,4	63392	4,2	227741	4,3	926	9,3	10621	6,4	23579	5,6
COVASNA	67392	0,9	12858	0,9	50623	1,0	18	0,2	1175	0,7	3911	0,9
DAMBOVITA	112114	1,6	28108	1,9	71958	1,4	98	1,0	2951	1,8	12048	2,8
DOLJ	189351	2,6	40021	2,7	138220	2,6	215	2,2	5633	3,4	11110	2,6
GALATI	205805	2,9	35786	2,4	157427	3,0	125	1,3	5370	3,2	12592	3,0
GIURGIU	48789	0,7	12128	0,8	32976	0,6	47	0,5			3685	0,9
GORJ	98654	1,4	18128	1,2	75126	1,4	48	0,5	2667	1,6	5400	1,3
HARGHITA	105239	1,5	22466	1,5	79300	1,5	51	0,5			3473	0,8
HUNEDOARA	132430	1,8	31095	2,1	92128	1,7	126	1,3	2944	1,8	9207	2,2
IALOMITA	69812	1,0	14225	0,9	50678	1,0	78	0,8	1586	1,0	4909	1,2
IASI	245702	3,4	45635	3,0	189725	3,6	597	6,0	4224	2,5	10342	2,4
MARAMURES	142851	2,0	38808	2,6	97602	1,8	159	1,6	2924	1,8	6441	1,5
MEHEDINTI	76736	1,1	17303	1,2	52057	1,0	55	0,6	3085	1,9	7376	1,7
MURES	178540	2,5	37872	2,5	131140	2,5	83	0,8	2942	1,8	9528	2,2
NEAMT	150984	2,1	33487	2,2	106747	2,0	304	3,1	2435	1,5	10750	2,5
OLT	97933	1,4	21718	1,4	67788	1,3	21	0,2	2033	1,2	8427	2,0
PRAHOVA	253206	3,5	49365	3,3	191543	3,6	274	2,8	3934	2,4	12298	2,9
SALAJ	59286	0,8	14337	1,0	41116	0,8	29	0,3	683	0,4	3833	0,9
SATU MARE	114217	1,6	25058	1,7	81751	1,5	26	0,3	2934	1,8	7408	1,7
SIBIU	152014	2,1	28765	1,9	117155	2,2	31	0,3	2583	1,6	6094	1,4
SUCEAVA	173959	2,4	38504	2,6	122119	2,3	29	0,3	2387	1,4	13336	3,1
TELEORMAN	80595	1,1	17139	1,1	60566	1,1	49	0,5	1504	0,9	2890	0,7
TIMIS	271564	3,8	51653	3,4	205875	3,9	271	2,7	7273	4,4	14036	3,3
TULCEA	74240	1,0	15702	1,0	54675	1,0	149	1,5	1002	0,6	3863	0,9
VASLUI	85662	1,2	19519	1,3	58297	1,1	197	2,0	1385	0,8	7846	1,8
VALCEA	117678	1,6	25140	1,7	85133	1,6	138	1,4	1888	1,1	7405	1,7
VRANCEA	92036	1,3	18722	1,2	69779	1,3	51	0,5	1594	1,0	3535	0,8
MUN. BUCURESTI	1491014	20,7	284833	19,0	1106105	20,9	2641	26,6	51406	31,0	100076	23,6
ILFOV	92115	1,3	22837	1,5	63421	1,2	21	0,2	1879	1,1	5857	1,4

*) according to the effect of Law No. 314/2001, art.1 și art. 6

*** Less than 0,01%

Table no. 2

**Operations registered in the Trade Register, by categories
during the period of December 1990 - July 2006, in total by country and counties,
- rate of categories of operations in total operations/country -**

Counties	Total of registered operations		out of which :									
			Registered companies		Changes in statutory documents		out of which :				Strike off companies	
	of liquidation, dissolution						out of which :					
	No.	%	No.	%	No.	%	No.	%	No.	%	No.	%
0	1	2	3	4	5	6	7	8	9	10	11	12
Total ROMÂNIA	7215820	100,0	1499850	20,8	5291504	73,3	9911	0,1	165855	2,3	424466	5,9
ALBA	99388	100,0	23351	23,5	72047	72,5	371	0,4	3596	3,6	3990	4,0
ARAD	160956	100,0	36487	22,7	115657	71,9	369	0,2	2974	1,8	8812	5,5
ARGES	172573	100,0	38701	22,4	125930	73,0	197	0,1	4219	2,4	7942	4,6
BACAU	173326	100,0	38214	22,0	124476	71,8	1003	0,6	5280	3,0	10636	6,1
BIHOR	221111	100,0	44182	20,0	164689	74,5	303	0,1	4598	2,1	12240	5,5
BISTRITA-NASAUD	90779	100,0	18376	20,2	66932	73,7	72	0,1	1120	1,2	5471	6,0
BOTOSANI	68403	100,0	18684	27,3	45410	66,4	66	0,1	1563	2,3	4309	6,3
BRASOV	239532	100,0	46464	19,4	183051	76,4	149	0,1	4892	2,0	10017	4,2
BRAILA	90639	100,0	21043	23,2	66788	73,7	61	0,1	2540	2,8	2808	3,1
BUZAU	136941	100,0	27803	20,3	99816	72,9	146	0,1	2109	1,5	9322	6,8
CARAS-SEVERIN	94732	100,0	18510	19,5	68408	72,2	41	0,0	1922	2,0	7814	8,2
CALARASI	61636	100,0	15273	24,8	43393	70,4	79	0,1			2970	4,8
CLUJ	311174	100,0	68158	21,9	236136	75,9	197	0,1			6880	2,2
CONSTANTA	314712	100,0	63392	20,1	227741	72,4	926	0,3	10621	3,4	23579	7,5
COVASNA	67392	100,0	12858	19,1	50623	75,1	18	0,0	1175	1,7	3911	5,8
DAMBOVITA	112114	100,0	28108	25,1	71958	64,2	98	0,1	2951	2,6	12048	10,7
DOLJ	189351	100,0	40021	21,1	138220	73,0	215	0,1	5633	3,0	11110	5,9
GALATI	205805	100,0	35786	17,4	157427	76,5	125	0,1	5370	2,6	12592	6,1
GIURGIU	48789	100,0	12128	24,9	32976	67,6	47	0,1			3685	7,6
GORJ	98654	100,0	18128	18,4	75126	76,2	48	0,0	2667	2,7	5400	5,5
HARGHITA	105239	100,0	22466	21,3	79300	75,4	51	0,0			3473	3,3
HUNEDOARA	132430	100,0	31095	23,5	92128	69,6	126	0,1	2944	2,2	9207	7,0
IALOMITA	69812	100,0	14225	20,4	50678	72,6	78	0,1	1586	2,3	4909	7,0
IASI	245702	100,0	45635	18,6	189725	77,2	597	0,2	4224	1,7	10342	4,2
MARAMURES	142851	100,0	38808	27,2	97602	68,3	159	0,1	2924	2,0	6441	4,5
MEHEDINTI	76736	100,0	17303	22,5	52057	67,8	55	0,1	3085	4,0	7376	9,6
MURES	178540	100,0	37872	21,2	131140	73,5	83	0,0	2942	1,6	9528	5,3
NEAMT	150984	100,0	33487	22,2	106747	70,7	304	0,2	2435	1,6	10750	7,1
OLT	97933	100,0	21718	22,2	67788	69,2	21	0,0	2033	2,1	8427	8,6
PRAHOVA	253206	100,0	49365	19,5	191543	75,6	274	0,1	3934	1,6	12298	4,9
SALAJ	59286	100,0	14337	24,2	41116	69,4	29	0,0	683	1,2	3833	6,5
SATU MARE	114217	100,0	25058	21,9	81751	71,6	26	0,0	2934	2,6	7408	6,5
SIBIU	152014	100,0	28765	18,9	117155	77,1	31	0,0	2583	1,7	6094	4,0
SUCEAVA	173959	100,0	38504	22,1	122119	70,2	29	0,0	2387	1,4	13336	7,7
TELEORMAN	80595	100,0	17139	21,3	60566	75,1	49	0,1	1504	1,9	2890	3,6
TIMIS	271564	100,0	51653	19,0	205875	75,8	271	0,1	7273	2,7	14036	5,2
TULCEA	74240	100,0	15702	21,2	54675	73,6	149	0,2	1002	1,3	3863	5,2
VASLUI	85662	100,0	19519	22,8	58297	68,1	197	0,2	1385	1,6	7846	9,2
VALCEA	117678	100,0	25140	21,4	85133	72,3	138	0,1	1888	1,6	7405	6,3
VRANCEA	92036	100,0	18722	20,3	69779	75,8	51	0,1	1594	1,7	3535	3,8
MUN. BUCURESTI	1491014	100,0	284833	19,1	1106105	74,2	2641	0,2	51406	3,4	100076	6,7
ILFOV	92115	100,0	22837	24,8	63421	68,8	21	0,0	1879	2,0	5857	6,4

*) according to the effect of Law No. 314/2001, art.1 și art. 6

*** Less than 0,01%

Table no.3

**Number and structure of incorporations in the Trade Register, by years,
during the period of December 1990 - July 2006**

Period (year, month)	Registered companies		Percentage	
	No.	%	%	%
0	1	2	3	
Total, 31 February 2006, out of which	1499850	94,73		
Year 1990	81	0,01		
Year 1991	95840	6,39		
Year 1992	137456	9,16		
Year 1993	117078	7,81		
Year 1994	137445	9,16		
Year 1995	65479	4,37		
Year 1996	62089	4,14		
Year 1997	55663	3,71		
Year 1998	63878	4,26		
Year 1999	57197	3,81		
Year 2000	57291	3,82		
Year 2001	61265	4,08		
Year 2002	84780	5,65		
Year 2003	123582	8,24		
Year 2004	144284	9,62		
Year 2005	157375	10,49		
Year 2006 (I - XII) out of which :	79067			100,0
January	8797			11,1
February	12605			15,9
March	14410			18,2
April	10806			13,7
May	10051			12,7
June	12109			15,3
July	10289			13,01

Note: Column 2 reveals the annual structure of incorporations; column 3 reveals the structure by months during the current year.

*** Less than 0,01%
Diagram no.1

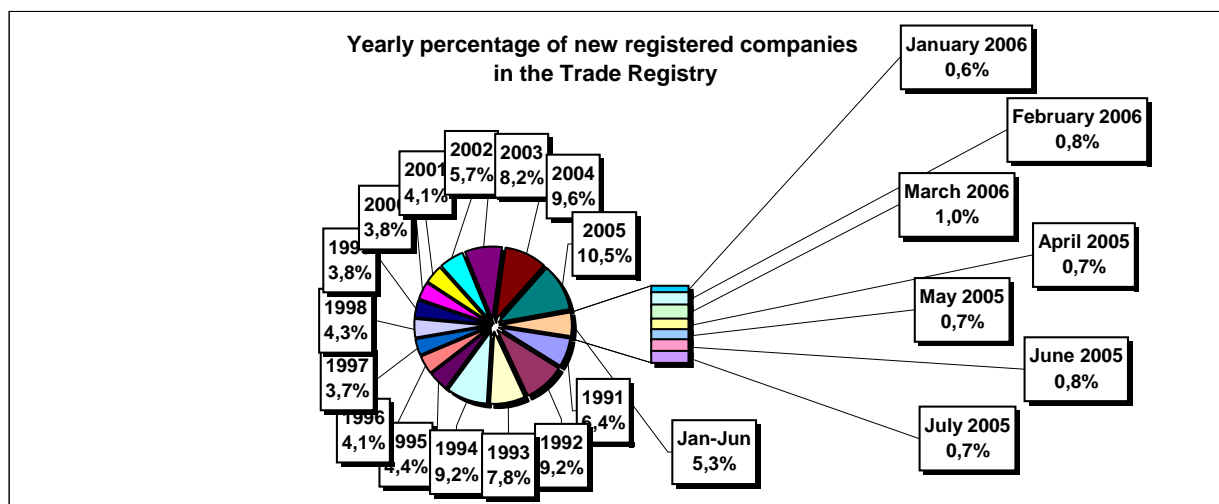


Table no. 4

The number of incorporations in the Trade Register, by counties and sources of capital, in the period December 1990 - July 2006

Counties	Total		out of which:					Ranking by: *	
			Private capital			State majority capital			Mixed capital (state+private)
			out of which:			out of which:			
			PF+AF	Companies	OC	RA	Companies		Companies
No.	%	No.	No.	No.	No.	No.	No.		
0	1	2	3	4	5	6	7	8	9
Total ROMÂNIA	1499850	100,0	384878	1097319	5392	1333	2361	8567	X
ALBA	23351	1,6	8054	14903	141	36	47	170	24
ARAD	36488	2,4	14058	21874	157	26	40	333	15
ARGES	38701	2,6	12652	25671	168	29	29	152	11
BACAU	38214	2,5	12824	24932	158	35	42	223	13
BIHOR	44182	2,9	9480	34150	146	37	62	307	8
BISTRITA-NASAUD	18376	1,2	6618	11503	98	19	29	109	33
BOTOSANI	18684	1,2	8481	9769	122	21	172	119	31
BRASOV	46464	3,1	9458	36592	114	43	87	170	6
BRAILA	21043	1,4	5246	15465	96	28	43	165	28
BUZAU	27803	1,9	8082	19380	142	26	42	131	21
CARAS-SEVERIN	18510	1,2	6495	11678	102	33	65	137	32
CALARASI	15273	1,0	4475	10522	86	18	77	95	38
CLUJ	68158	4,5	17004	50651	150	52	40	261	2
CONSTANTA	63392	4,2	12164	50385	203	51	49	540	3
COVASNA	12858	0,9	4305	8321	67	24	32	109	41
DAMBOVITA	28108	1,9	13071	14646	134	29	75	153	20
DOLJ	40021	2,7	7953	31607	162	40	57	202	9
GALATI	35786	2,4	6932	28495	135	30	51	143	16
GIURGIU	12128	0,8	2901	8906	80	22	109	110	42
GORJ	18128	1,2	4230	13481	184	50	83	100	34
HARGHITA	22466	1,5	8674	13411	86	23	43	229	26
HUNEDOARA	31095	2,1	8203	22400	81	37	92	282	18
IALOMITA	14225	0,9	5495	8504	74	15	46	91	40
IASI	45635	3,0	12451	32572	164	34	70	344	7
MARAMURES	38808	2,6	15968	22519	122	37	39	123	10
MEHEDINTI	17303	1,2	5455	11623	82	19	26	98	35
MURES	37872	2,5	14085	23401	155	30	34	167	14
NEAMT	33487	2,2	12405	20697	161	29	30	165	17
OLT	21718	1,4	8693	12651	161	26	64	123	27
PRAHOVA	49365	3,3	15047	33751	177	50	69	271	5
SALAJ	14337	1,0	5605	8515	107	19	28	63	39
SATU MARE	25058	1,7	8076	16699	88	19	42	134	23
SIBIU	28765	1,9	6948	21401	118	32	108	158	19
SUCEAVA	38504	2,6	18568	19420	202	30	64	220	12
TELEORMAN	17139	1,1	5906	10834	152	21	44	182	36
TIMIS	51653	3,4	8115	42947	140	38	68	345	4
TULCEA	15702	1,0	5325	10039	66	18	42	212	37
VASLUI	19519	1,3	9585	9633	109	16	41	135	29
VALCEA	25140	1,7	9975	14807	168	40	37	113	22
VRANCEA	18722	1,2	5715	12746	104	16	27	114	30
MUN. BUCURESTI	284832	19,0	17136	266232	138	115	103	1108	1
ILFOV	22837	1,5	2965	19586	92	20	13	161	25

*) The total number of incorporations (col 1)

*** Less than 0,01%

Table no. 5

**The number of incorporations in the Trade Register,
by counties and categories, during the period of
December 1990 - July 2006**

County	Total		out of which:						RA	OC
			PF+AF	companies: 1108247						
	SNC	SCS		SRL	SA	No.	No.			
	No.	%	No.	No.	No.			No.	No.	No.
0	1	2	3	4	5	6	7	8	9	
Total ROMÂNIA	1499850	100,0	384878	32645	1562	1042654	31380	1333	5392	
ALBA	23351	1,6	8054	888	11	13679	542	36	141	
ARAD	36487	2,4	14058	53	11	21523	658	26	157	
ARGES	38701	2,6	12652	107	14	24933	798	29	168	
BACAU	38214	2,5	12824	1299	4	23186	707	35	158	
BIHOR	44182	2,9	9480	125	47	33468	879	37	146	
BISTRITA-NASAUD	18376	1,2	6618	146	21	11069	405	19	98	
BOTOSANI	18684	1,2	8481	468	1	9147	444	21	122	
BRASOV	46464	3,1	9458	239	20	35766	824	43	114	
BRAILA	21043	1,4	5246	376	12	14779	506	28	96	
BUZAU	27803	1,9	8082	3747	46	15205	555	26	142	
CARAS-SEVERIN	18510	1,2	6495	117	8	11297	458	33	102	
CALARASI	15273	1,0	4475	609	3	9737	345	18	86	
CLUJ	68158	4,5	17004	2111	18	47616	1207	52	150	
CONSTANTA	63392	4,2	12164	311	23	49198	1442	51	203	
COVASNA	12858	0,9	4305	148	4	8015	295	24	67	
DAMBOVITA	28108	1,9	13071	60	8	14326	480	29	134	
DOLJ	40021	2,7	7953	1560	8	29446	852	40	162	
GALATI	35786	2,4	6932	1574	6	26290	819	30	135	
GIURGIU	12128	0,8	2901	35	8	8768	314	22	80	
GORJ	18128	1,2	4230	29	1	13160	474	50	184	
HARGHITA	22466	1,5	8674	62	6	13137	478	23	86	
HUNEDOARA	31095	2,1	8203	1166	98	20855	655	37	81	
IALOMITA	14225	0,9	5495	266	11	8026	338	15	74	
IASI	45635	3,0	12451	506	111	31392	975	34	164	
MARAMURES	38808	2,6	15968	1926	23	20155	576	37	122	
MEHEDINTI	17303	1,2	5455	427	3	10996	321	19	82	
MURES	37872	2,5	14085	37	34	22891	640	30	155	
NEAMT	33487	2,2	12405	3293	30	16916	653	29	161	
OLT	21718	1,4	8693	1611	1	10748	478	26	161	
PRAHOVA	49365	3,3	15047	3122	14	30090	865	50	177	
SALAJ	14337	1,0	5605	600	4	7723	279	19	107	
SATU MARE	25058	1,7	8076	283	5	16129	458	19	88	
SIBIU	28765	1,9	6948	775	48	20210	634	32	118	
SUCEAVA	38504	2,6	18568	438	8	18687	571	30	202	
TELEORMAN	17139	1,1	5906	272	399	9988	401	21	152	
TIMIS	51653	3,4	8115	607	27	41512	1214	38	140	
TULCEA	15702	1,0	5325	1363	114	8350	466	18	66	
VASLUI	19519	1,3	9585	90	11	9312	396	16	109	
VALCEA	25140	1,7	9975	364	6	14121	466	40	168	
VRANCEA	18722	1,2	5715	356	10	12082	439	16	104	
MUN. BUCURESTI	284833	19,0	17136	1030	295	259614	6504	115	138	
ILFOV	22837	1,5	2965	49	30	19112	569	20	92	

Table no. 6

**The number of incorporations in the Trade Register, by field of activity*
during the period of December 1990 - July 2006**

CAEN segment	Field of activity	Total		out of which:						
				PF+AF	companies: 1108247				RA	OC
		No.	%		No.	SNC	SCS	SRL		
				No.		No.	No.	No.	No.	No.
0	1	2	3	4	5	6	7	8	9	10
	Total ROMANIA	1499850	100,0	384878	32645	1562	1042654	31380	1333	5392
1	Agriculture, hunting and related service activities	61274	4,1	14619	2024	44	40640	3778	52	117
2	Forestry, logging and related service activities	7950	0,5	1027	152	3	6453	222	85	8
5	Fishing, fish farming and related service activities	2840	0,2	1619	17	3	1148	53		
10	Mining of coal and lignite; extraction of peat	111	0,0	2			73	32	4	
11	Extraction of crude petroleum and natural gas; service activities incidental to oil and gas extraction, excluding surveying	321	0,0	3	1		149	122	46	
12	Mining of uranium and thorium ores	133	0,0	32			95	6		
13	Mining of metal ores	527	0,0	163			301	55	8	
14	Other mining and quarrying	1494	0,1	108	9	1	1206	167	2	1
15	Manufacture of food products and beverages	72580	4,8	14055	3260	149	53015	1848	5	248
16	Manufacture of tobacco products	286	0,0	47			207	31	1	
17	Manufacture of textiles	11539	0,8	2324	556	16	8092	406		145
18	Manufacture of wearing apparel; dressing and dyeing of fur	20460	1,4	4628	875	38	14257	356	1	305
19	Tanning and dressing of leather; manufacture of luggage, handbags, saddlery, harness and footwear	5167	0,3	894	112	6	3980	123	1	51
20	Manufacture of wood and of products of wood and cork, except furniture; manufacture of articles of straw and plaiting materials	24424	1,6	8635	575	29	14638	496	9	42
21	Manufacture of pulp, paper and paper products	1737	0,1	119	21	1	1485	98		13
22	Publishing, printing and reproduction of recorded media	11489	0,8	936	317	21	9790	401	14	10
23	Manufacture of coke, refined petroleum products and nuclear fuel	257	0,0	24			197	34	2	
24	Manufacture of chemicals and chemical products	3617	0,2	119	89	1	3020	376	6	6
25	Manufacture of rubber and plastic products	6000	0,4	559	313	7	4839	257		24
26	Manufacture of other non-metallic mineral products	8808	0,6	2685	212	6	5504	382	5	14
27	Manufacture of basic metals	2405	0,2	168	39	3	1978	207	3	7
28	Manufacture of fabricated metal products, except machinery and equipment	16308	1,1	3890	361	23	11242	719	11	62
29	Manufacture of machinery and equipment n.e.c.	3707	0,2	103	44	7	3109	420	19	5
30	Manufacture of office machinery and computers	1752	0,1	15	25	4	1628	80		
31	Manufacture of electrical machinery and apparatus n.e.c.	1884	0,1	106	44	6	1578	144		6
32	Manufacture of radio, television and communication equipment and apparatus	842	0,1	57	14	4	693	73		1
33	Manufacture of medical, precision and optical instruments, watches and clocks	2478	0,2	593	17	2	1762	100		4
34	Manufacture of motor vehicles, trailers and semi-trailers	887	0,1	30	31	3	698	123		2
35	Manufacture of other transport equipment	1837	0,1	269	86	7	1279	121	73	2
36	Manufacture of furniture; manufacturing n.e.c.	14926	1,0	4268	284	16	9861	334	5	158
37	Recycling	4700	0,3	419	51	5	4052	172		1
40	Electricity, gas, steam and hot water supply	2862	0,2	834	3	1	1431	505	88	
41	Collection, purification and distribution of water	3537	0,2	1622	2		1646	194	73	
45	Construction	84819	5,7	23088	611	42	58530	2418	53	77

*)Field of activity declared when registered, according to CAEN classification

Table no. 6
(continuing)

**The number of incorporations in the Trade Register, by field of activity*
and categories, during the period of December 1990 - July 2006**

CAEN segment	Field of activity	Total		out of which:						RA	OC
				PF+AF	companies: 1108247						
					SNC	SCS	SRL	SA			
					No.	No.	No.	No.	No.		
0	1	2	3	4	5	6	7	8	9	10	
	Total ROMÂNIA	1499850	100,0	384878	32645	1562	1042654	31380	1333	5392	
50	Sale, maintenance and repair of motor vehicles and motorcycles; retail sale of automotive fuel	52420	3,5	8232	1244		41838	1024	6	42	
51	Wholesale trade and commission trade, except of motor vehicles and motorcycles	196713	13,1	16879	4524	150	171561	3282	35	282	
52	Retail trade, except of motor vehicles and motorcycles; repair of personal and household goods	488558	32,6	173096	11914	557	298121	2484	5	2380	
55	Hotels and restaurants	57850	3,9	13880	1635	126	41262	779	73	95	
60	Land transport; transport via pipelines	77187	5,1	34734	844	37	40477	1052	33	10	
61	Water transport	834	0,1	152	82	8	457	64	70	1	
62	Air transport	292	0,0	18			217	47	10		
63	Supporting and auxiliary transport activities; activities of travel agencies	9899	0,7	633	220	14	8487	438	96	11	
64	Post and telecommunications	6639	0,4	509	11	1	5810	294	11	3	
65	Financial intermediation, except insurance and pension funding	6041	0,4	143	15		2657	2191	2	1033	
66	Insurance and pension funding, except compulsory social security	1967	0,1	609	1		505	851		1	
67	Activities auxiliary to financial intermediation	6388	0,4	1249	6	2	4842	281		8	
70	Real estate activities	19683	1,3	695	28	9	18356	571	17	7	
71	Renting of machinery and equipment without operator and of personal and household goods	3152	0,2	628	116	8	2236	93	70	1	
72	Computer and related activities	21368	1,4	3856	119	13	16993	382	2	3	
73	Research and development	1653	0,1	238	11	2	1187	170	43	2	
74	Other business activities	101145	6,7	20791	790	74	77696	1627	106	60	
75	Public administration and defence; compulsory social security	358	0,0	89	5		216	26	21	1	
80	Education	6206	0,4	3143	62	5	2931	65			
85	Health and social work	15584	1,0	2093	233	15	13157	82	3	1	
90	Sewage and refuse disposal, sanitation and similar activities	840	0,1	89	13	2	612	104	18		
91	Activities of membership organizations n.e.c.	210	0,0	92	1		99	15		3	
92	Recreational, cultural and sporting activities	15438	1,0	4004	202	14	10841	295	70	12	
93	Other service activities	24626	1,6	10452	418	42	13206	305	76	126	
95	Activities of households as employers of domestic staff	765	0,1	461	6	1	293	3		1	
96	Extra-territorial organizations and bodies	10	0,0	10							

*)Field of activity declared when registered, according to CAEN classification

Table no. 7

**Operations carried on with the Trade Registers,
by counties and categories,
in July 2006**

County	Total of operations carried on		out of which:							
			New incorporations		Changes in statutory documents		out of which: of liquidation, dissolution		Strike off companies	
	No.	%	No.	%	No.	%	No.	%	No.	%
0	1	2	3	4	5	6	7	8	9	10
Total ROMÂNIA	109591	100,0	10289	9,4	87951	80,3	4404	4,0	11351	10,4
ALBA	1232	100,0	182	14,8	1020	82,8	4	0,3	30	2,4
ARAD	2048	100,0	285	13,9	1730	84,5	10	0,5	33	1,6
ARGES	2018	100,0	276	13,7	1691	83,8	106	5,3	51	2,5
BACAU	1468	100,0	242	16,5	1173	79,9	224	15,3	53	3,6
BIHOR	3535	100,0	329	9,3	2690	76,1	36	1,0	516	14,6
BISTRITA-NASAUD	894	100,0	108	12,1	742	83,0	101	11,3	44	4,9
BOTOSANI	591	100,0	118	20,0	458	77,5	1	0,2	15	2,5
BRASOV	2349	100,0	335	14,3	1981	84,3	33	1,4	33	1,4
BRAILA	890	100,0	111	12,5	768	86,3	14	1,6	11	1,2
BUZAU	1359	100,0	152	11,2	1169	86,0	491	36,1	38	2,8
CARAS-SEVERIN	1204	100,0	139	11,5	955	79,3	17	1,4	110	9,1
CALARASI	1058	100,0	99	9,4	362	34,2	7	0,7	597	56,4
CLUJ	4464	100,0	532	11,9	3866	86,6	57	1,3	66	1,5
CONSTANTA	4694	100,0	455	9,7	4190	89,3	13	0,3	49	1,0
COVASNA	486	100,0	80	16,5	380	78,2	2	0,4	26	5,3
DAMBOVITA	946	100,0	165	17,4	735	77,7	292	30,9	46	4,9
DOLJ	2699	100,0	270	10,0	2383	88,3	17	0,6	46	1,7
GALATI	2165	100,0	209	9,7	1924	88,9	184	8,5	32	1,5
GIURGIU	706	100,0	109	15,4	590	83,6	8	1,1	7	1,0
GORJ	2197	100,0	131	6,0	1706	77,7	11	0,5	360	16,4
HARGHITA	1385	100,0	223	16,1	1113	80,4	102	7,4	49	3,5
HUNEDOARA	1234	100,0	199	16,1	1024	83,0	4	0,3	11	0,9
IALOMITA	944	100,0	74	7,8	840	89,0			30	3,2
IASI	3943	100,0	311	7,9	3602	91,4	54	1,4	30	0,8
MARAMURES	1706	100,0	242	14,2	1401	82,1	146	8,6	63	3,7
MEHEDINTI	953	100,0	120	12,6	821	86,1	4	0,4	12	1,3
MURES	6090	100,0	269	4,4	4318	70,9	571	9,4	1503	24,7
NEAMT	1895	100,0	185	9,8	1668	88,0	105	5,5	42	2,2
OLT	747	100,0	129	17,3	595	79,7	28	3,7	23	3,1
PRAHOVA	2148	100,0	382	17,8	1716	79,9	629	29,3	50	2,3
SALAJ	1088	100,0	109	10,0	938	86,2	45	4,1	41	3,8
SATU MARE	1865	100,0	154	8,3	1699	91,1	183	9,8	12	0,6
SIBIU	1397	100,0	213	15,2	1081	77,4	18	1,3	103	7,4
SUCEAVA	1821	100,0	257	14,1	1521	83,5	271	14,9	43	2,4
TELEORMAN	503	100,0	79	15,7	409	81,3	88	17,5	15	3,0
TIMIS	2882	100,0	433	15,0	2412	83,7	12	0,4	37	1,3
TULCEA	1092	100,0	105	9,6	964	88,3	184	16,8	23	2,1
VASLUI	892	100,0	128	14,3	656	73,5	1	0,1	108	12,1
VALCEA	1413	100,0	148	10,5	1219	86,3	6	0,4	46	3,3
VRANCEA	1216	100,0	124	10,2	1066	87,7	7	0,6	26	2,1
MUN. BUCURESTI	35173	100,0	1816	5,2	26458	75,2	315	0,9	6899	19,6
ILFOV	2201	100,0	262	11,9	1917	87,1	3	0,1	22	1,0

*) by effect of implementation of Law no. 314/2001, art.1 and art. 6

*** Less than 0,01%

Table no. 8

**The number of incorporations in the Trade Register,
by counties and sources of capital,
in July 2006**

County	Total		out of which:					Rnking by: *	
			Private capital			State majority capital			Mixed capital (state+priva)
			out of which:			out of which:			
			PF+AF	Companies	OC	RA	Companie s		Companie s
No.	%	No.	No.	No.	No.	No.	No.		
0	1	2	3	4	5	6	7	8	9
Total ROMÂNIA	10289	100,0	3481	6804		1	1	2	X
ALBA	182	1,8	75	107					22
ARAD	285	2,8	99	186					9
ARGES	276	2,7	106	170					10
BACAU	242	2,4	103	139					15
BIHOR	329	3,2	146	183					7
BISTRITA-NASAUD	108	1,0	50	58					37
BOTOSANI	118	1,1	74	44					33
BRASOV	335	3,3	118	216		1			6
BRAILA	111	1,1	37	74					34
BUZAU	152	1,5	57	95					25
CARAS-SEVERIN	139	1,4	50	89					27
CALARASI	99	1,0	39	60					39
CLUJ	532	5,2	171	361					2
CONSTANTA	455	4,4	145	310					3
COVASNA	80	0,8	40	40					40
DAMBOVITA	165	1,6	75	90					23
DOLJ	270	2,6	100	170					11
GALATI	209	2,0	56	153					19
GIURGIU	109	1,1	48	61					35
GORJ	131	1,3	63	68					28
HARGHITA	223	2,2	114	109					17
HUNEDOARA	199	1,9	65	134					20
IALOMITA	74	0,7	28	46					42
IASI	311	3,0	114	197					8
MARAMURES	242	2,4	86	156					16
MEHEDINTI	120	1,2	49	71					32
MURES	269	2,6	113	156					12
NEAMT	185	1,8	88	97					21
OLT	129	1,3	44	85					29
PRAHOVA	382	3,7	151	230				1	5
SALAJ	109	1,1	38	71					36
SATU MARE	154	1,5	81	73					24
SIBIU	213	2,1	62	151					18
SUCEAVA	257	2,5	152	105					14
TELEORMAN	79	0,8	34	45					41
TIMIS	433	4,2	110	323					4
TULCEA	105	1,0	60	45					38
VASLUI	128	1,2	54	74					30
VALCEA	148	1,4	71	77					26
VRANCEA	124	1,2	48	76					31
MUN. BUCURESTI	1816	17,6	214	1600				2	1
ILFOV	262	2,5	53	209					13

*) The total number of incorporations (col 1)

*** Less than 0,01%

Table no.9

**The number of incorporations in the Trade Register,
by counties and category
in July 2006**

County	Total		out of which:						
			PF+AF	companies: 6807				RA	OC
	No.	%		No.	SNC	SCS	SRL		
			No.		No.	No.	No.	No.	No.
0	1	2	3	4	5	6	7	8	9
Total ROMÂNIA	10289	100,0	3481	1	1	6736	69	1	
ALBA	182	1,8	75			106	1		
ARAD	285	2,8	99		1	184	1		
ARGES	276	2,7	106			168	2		
BACAU	242	2,4	103			139			
BIHOR	329	3,2	146			182	1		
BISTRITA-NASAUD	108	1,0	50			58			
BOTOSANI	118	1,1	74			44			
BRASOV	335	3,3	118			214	2	1	
BRAILA	111	1,1	37			72	2		
BUZAU	152	1,5	57			94	1		
CARAS-SEVERIN	139	1,4	50			88	1		
CALARASI	99	1,0	39			59	1		
CLUJ	532	5,2	171			354	7		
CONSTANTA	455	4,4	145			308	2		
COVASNA	80	0,8	40			39	1		
DAMBOVITA	165	1,6	75			88	2		
DOLJ	270	2,6	100			164	6		
GALATI	209	2,0	56			149	4		
GIURGIU	109	1,1	48			60	1		
GORJ	131	1,3	63			68			
HARGHITA	223	2,2	114			108	1		
HUNEDOARA	199	1,9	65			133	1		
IALOMITA	74	0,7	28			46			
IASI	311	3,0	114			197			
MARAMURES	242	2,4	86			155	1		
MEHEDINTI	120	1,2	49			70	1		
MURES	269	2,6	113			153	3		
NEAMT	185	1,8	88			96	1		
OLT	129	1,3	44			85			
PRAHOVA	382	3,7	151			230	1		
SALAJ	109	1,1	38			70	1		
SATU MARE	154	1,5	81			73			
SIBIU	213	2,1	62			150	1		
SUCEAVA	257	2,5	152			105			
TELEORMAN	79	0,8	34			45			
TIMIS	433	4,2	110			323			
TULCEA	105	1,0	60			45			
VASLUI	128	1,2	54			72	2		
VALCEA	148	1,4	71	1		75	1		
VRANCEA	124	1,2	48			76			
MUN. BUCURESTI	1816	17,6	214			1585	17		
ILFOV	262	2,5	53			206	3		

Table no. 10

**The number of incorporations in the Trade Register, by field of activity*
and categories in July 2006**

CAEN segment	Field of activity	Total		out of which:						
				PF+AF	companies: 6807				RA	OC
		SNC	SCS		SRL	SA				
		No.	No.		No.	No.	No.	No.		
0	1	2	3	4	5	6	7	8	9	10
	Total ROMÂNIA	10289	100,0	3481	1	1	6736	69	1	
1	Agriculture, hunting and related service activities	541	5,3	307			233	1		
2	Forestry, logging and related service activities	42	0,4	7			34		1	
5	Fishing, fish farming and related service activities	59	0,6	46			13			
10	Mining of coal and lignite; extraction of peat									
11	Extraction of crude petroleum and natural gas; service activities incidental to oil and gas extraction, excluding surveying	1	0,0				1			
12	Mining of uranium and thorium ores									
13	Mining of metal ores									
14	Other mining and quarrying	18	0,2				18			
15	Manufacture of food products and beverages	114	1,1	50			63	1		
16	Manufacture of tobacco products	1	0,0				1			
17	Manufacture of textiles	34	0,3	9			25			
18	Manufacture of wearing apparel; dressing and dyeing of fur	78	0,8	21			57			
19	Tanning and dressing of leather; manufacture of luggage, handbags, saddlery, harness and footwear	27	0,3	7			20			
20	Manufacture of wood and of products of wood and cork, except furniture; manufacture of articles of straw and plaiting materials	108	1,0	50			58			
21	Manufacture of pulp, paper and paper products	11	0,1	1			9	1		
22	Publishing, printing and reproduction of recorded media	61	0,6	9			52			
23	Manufacture of coke, refined petroleum products and nuclear fuel	1	0,0				1			
24	Manufacture of chemicals and chemical products	8	0,1	1			7			
25	Manufacture of rubber and plastic products	26	0,3				26			
26	Manufacture of other non-metallic mineral products	70	0,7	17			51	2		
27	Manufacture of basic metals	2	0,0				2			
28	Manufacture of fabricated metal products, except machinery and equipment	139	1,4	59			80			
29	Manufacture of machinery and equipment n.e.c.	12	0,1				12			
30	Manufacture of office machinery and computers									
31	Manufacture of electrical machinery and apparatus n.e.c.	11	0,1				11			
32	Manufacture of radio, television and communication equipment and apparatus	2	0,0	1			1			
33	Manufacture of medical, precision and optical instruments, watches and clocks	25	0,2	4			21			
34	Manufacture of motor vehicles, trailers and semi- trailers	2	0,0				2			
35	Manufacture of other transport equipment	10	0,1				10			
36	Manufacture of furniture; manufacturing n.e.c.	84	0,8	29			55			
37	Recycling	30	0,3	2			28			
40	Electricity, gas, steam and hot water supply	10	0,1				9	1		
41	Collection, purification and distribution of water	6	0,1	1					5	
45	Construction	1381	13,4	513			853	15		

Table no. 10
(continuance)

**The number of incorporations in the Trade Register, by field of activity*
and categories in July 2006**

CAEN segment	Field of activity	Total		out of which:						
				PF+AF	companies: 6807				RA	OC
		No.	%		No.	SNC	SCS	SRL		
				No.		No.	No.	No.	No.	No.
0	1	2	3	4	5	6	7	8	9	10
	Total ROMÂNIA	10289	100,0	3481	1	1	6736	69	1	
50	Sale, maintenance and repair of motor vehicles and motorcycles; retail sale of automotive fuel	290	2,8	66			223	1		
51	Wholesale trade and commission trade, except of motor vehicles and motorcycles	1007	9,8	202	1		799	5		
52	Retail trade, except of motor vehicles and motorcycles; repair of personal and household goods	2164	21,0	977			1187			
55	Hotels and restaurants	458	4,5	131			325	2		
60	Land transport; transport via pipelines	501	4,9	180			320	1		
61	Water transport	5	0,0	1			4			
62	Air transport	2	0,0	1				1		
63	Supporting and auxiliary transport activities; activities of travel agencies	63	0,6	8			53	2		
64	Post and telecommunications	89	0,9	16			72	1		
65	Financial intermediation, except insurance and pension funding	78	0,8				59	19		
66	Insurance and pension funding, except compulsory social security	1	0,0					1		
67	Activities auxiliary to financial intermediation	52	0,5				51	1		
70	Real estate activities	400	3,9	4			392	4		
71	Renting of machinery and equipment without operator and of personal and household goods	29	0,3	4			25			
72	Computer and related activities	324	3,1	137			187			
73	Research and development	7	0,1				7			
74	Other business activities	1255	12,2	327		1	925	2		
75	Public administration and defence; compulsory social security									
80	Education	37	0,4	7			30			
85	Health and social work	92	0,9	3			89			
90	Sewage and refuse disposal, sanitation and similar activities	13	0,1	2			10	1		
91	Activities of membership organizations n.e.c.									
92	Recreational, cultural and sporting activities	241	2,3	145			94	2		
93	Other service activities	263	2,6	134			129			
95	Activities of households as employers of domestic staff	4	0,0	2			2			
96	Extra-territorial organizations and bodies									

*)Field of activity declared when registered, according to CAEN classification

Table no. 11

**Number of companies registered and the amount
of subscribed capital, by county in July 2006**

County	Total registered companies		Subscribed capital		Average subscribed capital on company
	No.	%	mii RON	%	mii RON
0	1	2	3	4	5
Total ROMÂNIA	6807	100,0	91044,0	100,0	13,5
ALBA	107	1,6	2924,3	3,2	27,3
ARAD	186	2,7	1161,3	1,3	6,2
ARGES	170	2,5	3062,2	3,4	18,0
BACAU	139	2,0	7316,1	8,0	52,6
BIHOR	183	2,7	171,5	0,2	0,9
BISTRITA-NASAUD	58	0,9	34,5	0,0	0,6
BOTOSANI	44	0,6	14,4	0,0	0,3
BRASOV	216	3,2	4725,8	5,2	21,9
BRAILA	74	1,1	170,9	0,2	2,4
BUZAU	95	1,4	12675,3	13,9	133,4
CARAS-SEVERIN	89	1,3	161,8	0,2	1,9
CALARASI	60	0,9	132,1	0,1	2,2
CLUJ	361	5,3	791,5	0,9	2,2
CONSTANTA	310	4,6	768,6	0,8	2,5
COVASNA	40	0,6	137,8	0,2	3,4
DAMBOVITA	90	1,3	49,7	0,1	0,6
DOLJ	170	2,5	194,9	0,2	1,2
GALATI	153	2,2	1284,3	1,4	8,4
GIURGIU	61	0,9	328,6	0,4	5,5
GORJ	68	1,0	16,7	0,0	0,2
HARGHITA	109	1,6	100,8	0,1	0,9
HUNEDOARA	134	2,0	84,6	0,1	0,6
IALOMITA	46	0,7	943,8	1,0	20,5
IASI	197	2,9	710,3	0,8	3,6
MARAMURES	156	2,3	198,5	0,2	1,3
MEHEDINTI	71	1,0	219,3	0,2	3,1
MURES	156	2,3	2639,1	2,9	17,4
NEAMT	97	1,4	27,8	0,0	0,3
OLT	85	1,2	101,6	0,1	1,2
PRAHOVA	231	3,4	2303,1	2,5	10,1
SALAJ	71	1,0	35,9	0,0	0,5
SATU MARE	73	1,1	47,3	0,1	0,6
SIBIU	151	2,2	655,5	0,7	4,3
SUCEAVA	105	1,5	1164,5	1,3	11,1
TELEORMAN	45	0,7	76,1	0,1	1,7
TIMIS	323	4,7	569,8	0,6	1,8
TULCEA	45	0,7	24,6	0,0	0,5
VASLUI	74	1,1	740,1	0,8	10,1
VALCEA	77	1,1	49,5	0,1	0,7
VRANCEA	76	1,1	145,6	0,2	1,9
MUN. BUCURESTI	1602	23,5	33696,2	37,0	21,1
ILFOV	209	3,1	10387,7	11,4	49,9

Note: The average does not include filials because according to the Law no.31/1990 they are not juridical persons

**** Less than 0,01%*

Table no. 12

**Number of registered companies and the amount
of subscribed capital by category,
in July 2006**

Company type	Total registered companies		Subscribed capital		Average subscribed capital on company
	No.	%	mii RON	%	mil. RON
0	1	2	3	4	5
Total ROMÂNIA	6807	100,0	91044,0	100,0	13,5
SNC	1	0,0	0,1	***	0,1
SCS	1	0,0	0,2	***	0,2
SA	69	1,0	40676,0	44,7	1162,2
SRL	6736	99,0	50367,7	55,3	7,5
SCA					

Note: The average does not include filials because according to the Law no.31/1990 they are not juridical persons

*** Less than 0,01%

Diagram no.5

