



MINISTRY OF JUSTICE

THE NATIONAL TRADE REGISTER OFFICE

București, Bd. Unirii nr. 74, Bl. J3b, tronson II+III, sector 3; Telefon: +40 21 316.08.04, 316.08.10; Fax: +40 21 316.08.03 Cod poștal: 030837
Website: www.onrc.ro; E-mail: onrc@onrc.ro; Cod de identificare Fiscală: 14942091; înregistrat ca operator date personale sub nr.1350

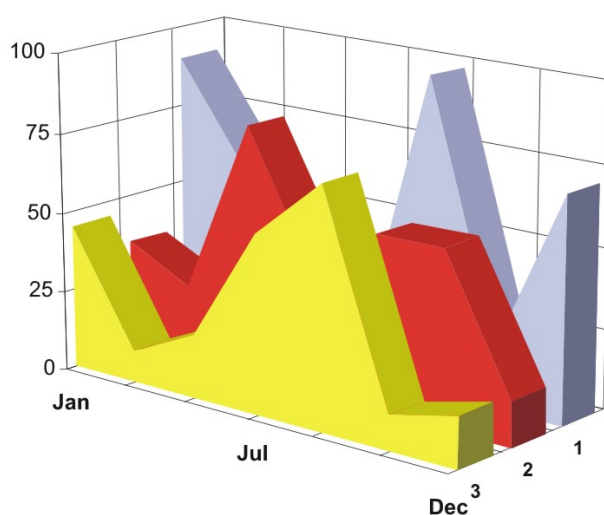
PROCEEDINGS IN THE CENTRAL TRADE REGISTER

STATISTICAL SYNTHESIS

OF

RECORDS IN THE CENTRAL TRADE REGISTER

- the 30th of June 2006 - provisional data -



- ISSUE No. 175 -

**MINISTRY OF JUSTICE
THE NATIONAL TRADE REGISTER OFFICE**

- Operations of incorporation of companies, changes in statutory documents and strike-off of companies are based on Law No.26/1990 reissued, Law No.31/1990, reissued, OUG No.76/2001, reissued and Methodology Norms No. P/608/1998.

- This paper presents the trend in operations registered in The Trade Register Office attached to the law court of Bucharest and in the Trade Register Offices attached to the law court in each county of Romania.

- Information recorded in the Central Trade Register concern operations compulsory by law to be registered in the trade registers within the 42 trade register offices attached to the law courts.

• No part of the content of this publication, in original or in any modified format, June be reproduced, stored in a retrieval system, or transmitted, in any form or by any means, without the prior permission in writing of The Ministry of Justice – The National Trade Register Office.

• The content of this publication June be referred to in articles, studies, books, as supporting or explanatory data under the condition only, the source of the information to be clearly and precisely specified.

Contents

	Page
1 Explanatory Note	1
2.1 Data for December 1990 – June 2006	3
Table no.1 – Operations registered in the Trade Register, by categories during the period of December 1990 – June 2006, in total by country and counties, rate of categories of operations in total operations country	3
Table no.1.a – Operations registered in the Trade Register, by categories during the period of December 1990 – June 2006, in total by country and counties, counties’ rate in total country	4
Table no. 3 – Number and structure of incorporations in the Trade Register, by years, during the period of December 1990- June 2006	5
Table no.4 – The number of incorporations in the Trade Register, by counties and sources of capital, in the period December 1990 - June 2006	6
Table no. 5 – The number of incorporations in the Trade Register, by counties and categories, during the period of December 1990 – June 2006	7
Table no. 6 – The number of incorporations in the Trade Register, by field of activity and categories, during the period of December 1990 - June 2006	8
2.2 Data for June 2006	10
Table no. 7 – Operations carried on with the Trade Registers, by counties and categories, in June 2006	10
Table no. 8 – The number of incorporations in the Trade Register, by counties and sources of capital, in June 2006	11
Table no. 9 – The number of incorporations in the Trade Register, by counties and category in June 2006	12
Table no. 10 –The number of incorporations in the Trade Register, by field of activity and categories in June 2006	13
Table no. 11 – Number of companies registered and the amount of subscribed capital, by county in June 2006	15
Table no. 12– Number of registered companies and the amount of subscribed capital by category, in June 2006	16
Diagram no. 5 – Average subscribed capital on company in June 2006	16

Explanatory Note

The Trade Register Office is set-up by Law No. 26/1990, reissued and modified by OUG No. 129/2002, became an active institution since December 1990 and is structured in two levels:

- the national level, represented by the National Trade Register Office organised under the Ministry of Justice
- the local level, represented by the 42 trade register offices attached to the law courts and co-ordinated by the National Trade Register Office

The categories of businessmen compulsory to register in the trade register are:

- natural persons tradesmen and family associations doing usually commercial acts, commercial companies, national companies, companies under state supervision, and co-operative organisations
- subsidiaries registered as commercial companies and legal persons following the legal proceedings of set-up, activity and incorporation according to the type of the legally set-up company.

Usual Terms:

- incorporation – represents the registration of the company in the trade registry awarding the quality of legal person.

- other statutory documents – represent the official registration of the changes occurred in a company's life, such as: changes in headquarters' address, increase or decrease of the issued capital, merger, liquidation, strike-off, etc.

- strike-off – represents the removal of a company from the trade registry, due to dissolution and liquidation, being also the very moment the company loses its quality of legal person. Data also include the companies under the provisions of Law No. 314/2001.

- change of certificate – represents the obligation of companies set-up before OGU No. 76/2001 republished came in force, to request the incorporation certificate and fiscal registration certificate to be replaced with the new registration certificate containing the given unique registration code.

The ratio of these changes is being calculated as a proportion between the effective number of changes and the number of active companies due to operate the change.

- active company from the legal point of view – a company registered in the trade register and which is not affected by any of the situations leading to the temporary or permanent loss of this status (e.g. dissolution, liquidation, strike-off)

- operations represent all the records in the trade registry including incorporations, other statutory documents and strike-off of companies, irrespective of the object of activity, company's type and origin of the subscribed capital (local or foreign investment).

• **Terms used in tables and charts**

➤ **Number of companies:** represents, depending on the specific table, the number of companies incorporated in the related period, the number of companies being struck-off from the trade registry.

➤ **Amount of the subscribed capital:**

- **total, in local currency:** the amount of the subscribed capital resulted from totalising the amount subscribed (in cash and in kind) in local currency (ROL)

➤ **Regional development:**

<i>North-East:</i>	Suceava, Botoșani, Neamț, Iași, Bacău, Vaslui.
<i>South-East:</i>	Vrancea, Galați, Buzău, Brăila, Tulcea, Constanța.
<i>South-Muntenia:</i>	Argeș, Dâmbovița, Prahova, Teleorman, Giurgiu, Călărași, Ialomița.
<i>South-West Oltenia:</i>	Gorj, Vâlcea, Dolj, Mehedinți, Olt.
<i>West:</i>	Arad, Caraș-Severin, Hunedoara, Timiș.
<i>North-West:</i>	Bihor, Bistrița, Cluj, Satu Mare, Sălaj, Maramureș.
<i>Center:</i>	Alba, Brașov, Covasna, Harghita, Mureș, Sibiu.
<i>Bucharest-Ilfov:</i>	București, Ilfov.

CAEN code – The Classification of Activities in the National Economy was approved by HG No. 656/1997, modified by Order No 601 of the President of National Institute of Statistics being compatible with the international classification used in statistic reports and official documents. Activities are ranked upon homogeneity principle by sections, divisions, groups and classes.

Common abbreviations

- **PF** - Natural Persons Tradesman
- **AF** - Family association
- **SNC** - General Partnership
- **SCS** - Limited Partnership
- **SA** - Joint stock company
- **SRL** - Limited liability company
- **RA** - Company Under State Supervision
- **OC** - Co-operative organisation

Source:

The integrated IT system of the trade registry is designed by The National Trade Registry Office according to the provisions of the related legislation in force. The source of information is the computerised system of the trade registers handled by the Trade Register Offices attached to the law courts.

Table no. 1

**Operations registered in the Trade Register, by categories
during the period of December 1990 - June 2006 in total by country and counties,
- rate of categories of operations in total operations/country -**

Counties	Total of registered operations		out of which :									
			Registered companies		Changes in statutory documents		out of which :				Strike off companies	
	of liquidation, dissolution						out of which :					
	No.	%	No.	%	No.	%	No.	%	No.	%	No.	%
0	1	2	3	4	5	6	7	8	9	10	11	12
Total ROMÂNIA	7106229	100,0	1489561	100,0	5203553	100,0	9911	100,0	165855	100,0	413115	100,0
ALBA	98156	1,4	23169	1,6	71027	1,4	371	3,7	3596	2,2	3960	1,0
ARAD	158908	2,2	36202	2,4	113927	2,2	369	3,7	2974	1,8	8779	2,1
ARGES	170555	2,4	38425	2,6	124239	2,4	197	2,0	4219	2,5	7891	1,9
BACAU	171858	2,4	37972	2,5	123303	2,4	1003	10,1	5280	3,2	10583	2,6
BIHOR	217576	3,1	43853	2,9	161999	3,1	303	3,1	4598	2,8	11724	2,8
BISTRITA-NASAUD	89885	1,3	18268	1,2	66190	1,3	72	0,7	1120	0,7	5427	1,3
BOTOSANI	67812	1,0	18566	1,2	44952	0,9	66	0,7	1563	0,9	4294	1,0
BRASOV	237183	3,3	46129	3,1	181070	3,5	149	1,5	4892	2,9	9984	2,4
BRAILA	89749	1,3	20932	1,4	66020	1,3	61	0,6	2540	1,5	2797	0,7
BUZAU	135582	1,9	27651	1,9	98647	1,9	146	1,5	2109	1,3	9284	2,2
CARAS-SEVERIN	93528	1,3	18371	1,2	67453	1,3	41	0,4	1922	1,2	7704	1,9
CALARASI	60578	0,9	15174	1,0	43031	0,8	79	0,8			2373	0,6
CLUJ	306710	4,3	67626	4,5	232270	4,5	197	2,0			6814	1,6
CONSTANTA	310018	4,4	62937	4,2	223551	4,3	926	9,3	10621	6,4	23530	5,7
COVASNA	66906	0,9	12778	0,9	50243	1,0	18	0,2	1175	0,7	3885	0,9
DAMBOVITA	111168	1,6	27943	1,9	71223	1,4	98	1,0	2951	1,8	12002	2,9
DOLJ	186652	2,6	39751	2,7	135837	2,6	215	2,2	5633	3,4	11064	2,7
GALATI	203640	2,9	35577	2,4	155503	3,0	125	1,3	5370	3,2	12560	3,0
GIURGIU	48083	0,7	12019	0,8	32386	0,6	47	0,5			3678	0,9
GORJ	96457	1,4	17997	1,2	73420	1,4	48	0,5	2667	1,6	5040	1,2
HARGHITA	103854	1,5	22243	1,5	78187	1,5	51	0,5			3424	0,8
HUNEDOARA	131196	1,8	30896	2,1	91104	1,8	126	1,3	2944	1,8	9196	2,2
IALOMITA	68868	1,0	14151	1,0	49838	1,0	78	0,8	1586	1,0	4879	1,2
IASI	241759	3,4	45324	3,0	186123	3,6	597	6,0	4224	2,5	10312	2,5
MARAMURES	141145	2,0	38566	2,6	96201	1,8	159	1,6	2924	1,8	6378	1,5
MEHEDINTI	75783	1,1	17183	1,2	51236	1,0	55	0,6	3085	1,9	7364	1,8
MURES	172450	2,4	37603	2,5	126822	2,4	83	0,8	2942	1,8	8025	1,9
NEAMT	149089	2,1	33302	2,2	105079	2,0	304	3,1	2435	1,5	10708	2,6
OLT	97186	1,4	21589	1,4	67193	1,3	21	0,2	2033	1,2	8404	2,0
PRAHOVA	251058	3,5	48983	3,3	189827	3,6	274	2,8	3934	2,4	12248	3,0
SALAJ	58198	0,8	14228	1,0	40178	0,8	29	0,3	683	0,4	3792	0,9
SATU MARE	112352	1,6	24904	1,7	80052	1,5	26	0,3	2934	1,8	7396	1,8
SIBIU	150617	2,1	28552	1,9	116074	2,2	31	0,3	2583	1,6	5991	1,5
SUCEAVA	172138	2,4	38247	2,6	120598	2,3	29	0,3	2387	1,4	13293	3,2
TELEORMAN	80092	1,1	17060	1,1	60157	1,2	49	0,5	1504	0,9	2875	0,7
TIMIS	268682	3,8	51220	3,4	203463	3,9	271	2,7	7273	4,4	13999	3,4
TULCEA	73148	1,0	15597	1,0	53711	1,0	149	1,5	1002	0,6	3840	0,9
VASLUI	84770	1,2	19391	1,3	57641	1,1	197	2,0	1385	0,8	7738	1,9
VALCEA	116265	1,6	24992	1,7	83914	1,6	138	1,4	1888	1,1	7359	1,8
VRANCEA	90820	1,3	18598	1,2	68713	1,3	51	0,5	1594	1,0	3509	0,8
MUN. BUCURESTI	1455841	20,5	283017	19,0	1079647	20,7	2641	26,6	51406	31,0	93177	22,6
ILFOV	89914	1,3	22575	1,5	61504	1,2	21	0,2	1879	1,1	5835	1,4

*) according to the effect of Law No. 314/2001, art.1 și art. 6

*** Less than 0,01%

Table no. 2

**Operations registered in the Trade Register, by categories
during the period of December 1990 - June 2006, in total by country and counties,
- rate of categories of operations in total operations/country -**

Counties	Total of registered operations		out of which :									
			Registered companies		Changes in statutory documents		out of which :				Strike off companies	
	of liquidation, dissolution						out of which :					
	No.	%	No.	%	No.	%	No.	%	No.	%	No.	%
0	1	2	3	4	5	6	7	8	9	10	11	12
Total ROMÂNIA	7106229	100,0	1489561	21,0	5203553	73,2	9911	0,1	165855	2,3	413115	5,8
ALBA	98156	100,0	23169	23,6	71027	72,4	371	0,4	3596	3,7	3960	4,0
ARAD	158908	100,0	36202	22,8	113927	71,7	369	0,2	2974	1,9	8779	5,5
ARGES	170555	100,0	38425	22,5	124239	72,8	197	0,1	4219	2,5	7891	4,6
BACAU	171858	100,0	37972	22,1	123303	71,7	1003	0,6	5280	3,1	10583	6,2
BIHOR	217576	100,0	43853	20,2	161999	74,5	303	0,1	4598	2,1	11724	5,4
BISTRITA-NASAUD	89885	100,0	18268	20,3	66190	73,6	72	0,1	1120	1,2	5427	6,0
BOTOSANI	67812	100,0	18566	27,4	44952	66,3	66	0,1	1563	2,3	4294	6,3
BRASOV	237183	100,0	46129	19,4	181070	76,3	149	0,1	4892	2,1	9984	4,2
BRAILA	89749	100,0	20932	23,3	66020	73,6	61	0,1	2540	2,8	2797	3,1
BUZAU	135582	100,0	27651	20,4	98647	72,8	146	0,1	2109	1,6	9284	6,8
CARAS-SEVERIN	93528	100,0	18371	19,6	67453	72,1	41	0,0	1922	2,1	7704	8,2
CALARASI	60578	100,0	15174	25,0	43031	71,0	79	0,1			2373	3,9
CLUJ	306710	100,0	67626	22,0	232270	75,7	197	0,1			6814	2,2
CONSTANTA	310018	100,0	62937	20,3	223551	72,1	926	0,3	10621	3,4	23530	7,6
COVASNA	66906	100,0	12778	19,1	50243	75,1	18	0,0	1175	1,8	3885	5,8
DAMBOVITA	111168	100,0	27943	25,1	71223	64,1	98	0,1	2951	2,7	12002	10,8
DOLJ	186652	100,0	39751	21,3	135837	72,8	215	0,1	5633	3,0	11064	5,9
GALATI	203640	100,0	35577	17,5	155503	76,4	125	0,1	5370	2,6	12560	6,2
GIURGIU	48083	100,0	12019	25,0	32386	67,4	47	0,1			3678	7,6
GORJ	96457	100,0	17997	18,7	73420	76,1	48	0,0	2667	2,8	5040	5,2
HARGHITA	103854	100,0	22243	21,4	78187	75,3	51	0,0			3424	3,3
HUNEDOARA	131196	100,0	30896	23,5	91104	69,4	126	0,1	2944	2,2	9196	7,0
IALOMITA	68868	100,0	14151	20,5	49838	72,4	78	0,1	1586	2,3	4879	7,1
IASI	241759	100,0	45324	18,7	186123	77,0	597	0,2	4224	1,7	10312	4,3
MARAMURES	141145	100,0	38566	27,3	96201	68,2	159	0,1	2924	2,1	6378	4,5
MEHEDINTI	75783	100,0	17183	22,7	51236	67,6	55	0,1	3085	4,1	7364	9,7
MURES	172450	100,0	37603	21,8	126822	73,5	83	0,0	2942	1,7	8025	4,7
NEAMT	149089	100,0	33302	22,3	105079	70,5	304	0,2	2435	1,6	10708	7,2
OLT	97186	100,0	21589	22,2	67193	69,1	21	0,0	2033	2,1	8404	8,6
PRAHOVA	251058	100,0	48983	19,5	189827	75,6	274	0,1	3934	1,6	12248	4,9
SALAJ	58198	100,0	14228	24,4	40178	69,0	29	0,0	683	1,2	3792	6,5
SATU MARE	112352	100,0	24904	22,2	80052	71,3	26	0,0	2934	2,6	7396	6,6
SIBIU	150617	100,0	28552	19,0	116074	77,1	31	0,0	2583	1,7	5991	4,0
SUCEAVA	172138	100,0	38247	22,2	120598	70,1	29	0,0	2387	1,4	13293	7,7
TELEORMAN	80092	100,0	17060	21,3	60157	75,1	49	0,1	1504	1,9	2875	3,6
TIMIS	268682	100,0	51220	19,1	203463	75,7	271	0,1	7273	2,7	13999	5,2
TULCEA	73148	100,0	15597	21,3	53711	73,4	149	0,2	1002	1,4	3840	5,2
VASLUI	84770	100,0	19391	22,9	57641	68,0	197	0,2	1385	1,6	7738	9,1
VALCEA	116265	100,0	24992	21,5	83914	72,2	138	0,1	1888	1,6	7359	6,3
VRANCEA	90820	100,0	18598	20,5	68713	75,7	51	0,1	1594	1,8	3509	3,9
MUN. BUCURESTI	1455841	100,0	283017	19,4	1079647	74,2	2641	0,2	51406	3,5	93177	6,4
ILFOV	89914	100,0	22575	25,1	61504	68,4	21	0,0	1879	2,1	5835	6,5

*) according to the effect of Law No. 314/2001, art.1 și art. 6

*** Less than 0,01%

Table no.3

Number and structure of incorporations in the Trade Register, by years, during the period of December 1990 - June 2006

Period (year, month)	Registered companies		Percentage	
	No.	%	%	
0	1	2	3	
Total, 31 February 2006, out of which	1489561	100,00		
Year 1990	81	0,01		
Year 1991	95840	6,43		
Year 1992	137456	9,23		
Year 1993	117078	7,86		
Year 1994	137445	9,23		
Year 1995	65479	4,40		
Year 1996	62089	4,17		
Year 1997	55663	3,74		
Year 1998	63878	4,29		
Year 1999	57197	3,84		
Year 2000	57291	3,85		
Year 2001	61265	4,11		
Year 2002	84780	5,69		
Year 2003	123582	8,30		
Year 2004	144284	9,69		
Year 2005	157375	10,57		
Year 2006 (I - XII) out of which :	68778			123,9
January	8797			12,8
February	12605			18,3
March	14410			21,0
April	10806			21,0
May	10051			15,7
June	12109			17,6

Note: Column 2 reveals the annual structure of incorporations; column 3 reveals the structure by months during the current year.

*** Less than 0,01%
Diagram no.1

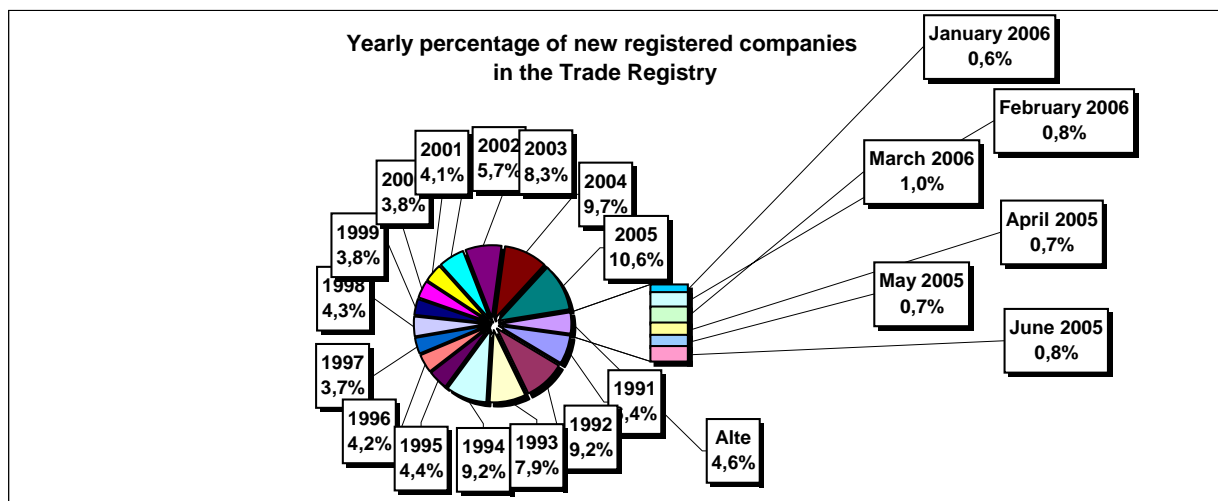


Table no. 4

The number of incorporations in the Trade Register, by counties and sources of capital, in the period December 1990 - June 2006

Counties	Total		out of which:					Ranking by: *	
			Private capital			State majority capital			Mixed capital (state+private)
	out of which:		out of which:						
	PF+AF	Companies	OC	RA	Companies	Companies			
No.	%	No.	No.	No.	No.	No.	No.		
0	1	2	3	4	5	6	7	8	9
Total ROMÂNIA	1489561	100,0	381397	1090515	5392	1332	2360	8565	X
ALBA	23169	1,6	7979	14796	141	36	47	170	24
ARAD	36203	2,4	13959	21688	157	26	40	333	15
ARGES	38425	2,6	12546	25501	168	29	29	152	11
BACAU	37972	2,5	12721	24793	158	35	42	223	13
BIHOR	43853	2,9	9334	33967	146	37	62	307	8
BISTRITA-NASAUD	18268	1,2	6568	11445	98	19	29	109	33
BOTOSANI	18566	1,2	8407	9725	122	21	172	119	31
BRASOV	46129	3,1	9340	36376	114	42	87	170	6
BRAILA	20932	1,4	5209	15391	96	28	43	165	28
BUZAU	27651	1,9	8025	19285	142	26	42	131	21
CARAS-SEVERIN	18371	1,2	6445	11589	102	33	65	137	32
CALARASI	15174	1,0	4436	10462	86	18	77	95	38
CLUJ	67626	4,5	16833	50290	150	52	40	261	2
CONSTANTA	62937	4,2	12019	50075	203	51	49	540	3
COVASNA	12778	0,9	4265	8281	67	24	32	109	41
DAMBOVITA	27943	1,9	12966	14556	134	29	75	153	20
DOLJ	39751	2,7	7853	31437	162	40	57	202	9
GALATI	35577	2,4	6876	28342	135	30	51	143	16
GIURGIU	12019	0,8	2853	8845	80	22	109	110	42
GORJ	17997	1,2	4167	13413	184	50	83	100	34
HARGHITA	22243	1,5	8560	13302	86	23	43	229	26
HUNEDOARA	30896	2,1	8138	22266	81	37	92	282	18
IALOMITA	14151	1,0	5467	8458	74	15	46	91	40
IASI	45324	3,0	12337	32375	164	34	70	344	7
MARAMURES	38566	2,6	15882	22363	122	37	39	123	10
MEHEDINTI	17183	1,2	5406	11552	82	19	26	98	35
MURES	37603	2,5	13972	23245	155	30	34	167	14
NEAMT	33302	2,2	12317	20600	161	29	30	165	17
OLT	21589	1,4	8649	12566	161	26	64	123	27
PRAHOVA	48983	3,3	14896	33521	177	50	68	271	5
SALAJ	14228	1,0	5567	8444	107	19	28	63	39
SATU MARE	24904	1,7	7995	16626	88	19	42	134	23
SIBIU	28552	1,9	6886	21250	118	32	108	158	19
SUCEAVA	38247	2,6	18416	19315	202	30	64	220	12
TELEORMAN	17060	1,1	5872	10789	152	21	44	182	36
TIMIS	51220	3,4	8005	42624	140	38	68	345	4
TULCEA	15597	1,0	5265	9994	66	18	42	212	37
VASLUI	19391	1,3	9531	9559	109	16	41	135	29
VALCEA	24992	1,7	9904	14730	168	40	37	113	22
VRANCEA	18598	1,2	5667	12670	104	16	27	114	30
MUN. BUCURESTI	283016	19,0	16922	264632	138	115	103	1106	1
ILFOV	22575	1,5	2912	19377	92	20	13	161	25

*) The total number of incorporations (col 1)

*** Less than 0,01%

Table no. 5

**The number of incorporations in the Trade Register,
by counties and categories, during the period of
December 1990 - June 2006**

County	Total		out of which:						RA	OC
			PF+AF	companies: 1101440						
	SNC	SCS		SRL	SA	No.	No.			
	No.	%	No.	No.	No.			No.	No.	No.
0	1	2	3	4	5	6	7	8	9	
Total ROMÂNIA	1489561	100,0	381397	32644	1561	1035918	31311	1332	5392	
ALBA	23169	1,6	7979	888	11	13573	541	36	141	
ARAD	36202	2,4	13959	53	10	21339	657	26	157	
ARGES	38425	2,6	12546	107	14	24765	796	29	168	
BACAU	37972	2,5	12721	1299	4	23047	707	35	158	
BIHOR	43853	2,9	9334	125	47	33286	878	37	146	
BISTRITA-NASAUD	18268	1,2	6568	146	21	11011	405	19	98	
BOTOSANI	18566	1,2	8407	468	1	9103	444	21	122	
BRASOV	46129	3,1	9340	239	20	35552	822	42	114	
BRAILA	20932	1,4	5209	376	12	14707	504	28	96	
BUZAU	27651	1,9	8025	3747	46	15111	554	26	142	
CARAS-SEVERIN	18371	1,2	6445	117	8	11209	457	33	102	
CALARASI	15174	1,0	4436	609	3	9678	344	18	86	
CLUJ	67626	4,5	16833	2111	18	47262	1200	52	150	
CONSTANTA	62937	4,2	12019	311	23	48890	1440	51	203	
COVASNA	12778	0,9	4265	148	4	7976	294	24	67	
DAMBOVITA	27943	1,9	12996	60	8	14238	478	29	134	
DOLJ	39751	2,7	7853	1560	8	29282	846	40	162	
GALATI	35577	2,4	6876	1574	6	26141	815	30	135	
GIURGIU	12019	0,8	2853	35	8	8708	313	22	80	
GORJ	17997	1,2	4167	29	1	13092	474	50	184	
HARGHITA	22243	1,5	8560	62	6	13029	477	23	86	
HUNEDOARA	30896	2,1	8138	1166	98	20722	654	37	81	
IALOMITA	14151	1,0	5467	266	11	7980	338	15	74	
IASI	45324	3,0	12337	506	111	31195	975	34	164	
MARAMURES	38566	2,6	15882	1926	23	20000	575	37	122	
MEHEDINTI	17183	1,2	5406	427	3	10926	320	19	82	
MURES	37603	2,5	13972	37	34	22738	637	30	155	
NEAMT	33302	2,2	12317	3293	30	16820	652	29	161	
OLT	21589	1,4	8649	1611	1	10663	478	26	161	
PRAHOVA	48983	3,3	14896	3122	14	29860	864	50	177	
SALAJ	14228	1,0	5567	600	4	7653	278	19	107	
SATU MARE	24904	1,7	7995	283	5	16056	458	19	88	
SIBIU	28552	1,9	6886	775	48	20060	633	32	118	
SUCEAVA	38247	2,6	18416	438	8	18582	571	30	202	
TELEORMAN	17060	1,1	5872	272	399	9943	401	21	152	
TIMIS	51220	3,4	8005	607	27	41189	1214	38	140	
TULCEA	15597	1,0	5265	1363	114	8305	466	18	66	
VASLUI	19391	1,3	9531	90	11	9240	394	16	109	
VALCEA	24992	1,7	9904	363	6	14046	465	40	168	
VRANCEA	18598	1,2	5667	356	10	12006	439	16	104	
MUN. BUCURESTI	283017	19,0	16922	1030	295	258029	6487	115	138	
ILFOV	22575	1,5	2912	49	30	18906	566	20	92	

Table no. 6

**The number of incorporations in the Trade Register, by field of activity*
during the period of December 1990 - June 2006**

CAEN segment	Field of activity	Total		out of which:						
				PF+AF	companies: 1101440				RA	OC
		No.	%		No.	SNC	SCS	SRL		
				No.		No.	No.	No.	No.	No.
0	1	2	3	4	5	6	7	8	9	10
	Total ROMANIA	1489561	100,0	381397	32644	1561	1035918	31311	1332	5392
1	Agriculture, hunting and related service activities	60733	4,1	14312	2024	44	40407	3777	52	117
2	Forestry, logging and related service activities	7908	0,5	1020	152	3	6419	222	84	8
5	Fishing, fish farming and related service activities	2781	0,2	1573	17	3	1135	53		
10	Mining of coal and lignite; extraction of peat	111	0,0	2			73	32	4	
11	Extraction of crude petroleum and natural gas; service activities incidental to oil and gas extraction, excluding surveying	320	0,0	3	1		148	122	46	
12	Mining of uranium and thorium ores	133	0,0	32			95	6		
13	Mining of metal ores	527	0,0	163			301	55	8	
14	Other mining and quarrying	1476	0,1	108	9	1	1188	167	2	1
15	Manufacture of food products and beverages	72466	4,9	14005	3260	149	52952	1847	5	248
16	Manufacture of tobacco products	285	0,0	47			206	31	1	
17	Manufacture of textiles	11505	0,8	2315	556	16	8067	406		145
18	Manufacture of wearing apparel; dressing and dyeing of fur	20382	1,4	4607	875	38	14200	356	1	305
19	Tanning and dressing of leather; manufacture of luggage, handbags, saddlery, harness and footwear	5140	0,3	887	112	6	3960	123	1	51
20	Manufacture of wood and of products of wood and cork, except furniture; manufacture of articles of straw and plaiting materials	24316	1,6	8585	575	29	14580	496	9	42
21	Manufacture of pulp, paper and paper products	1726	0,1	118	21	1	1476	97		13
22	Publishing, printing and reproduction of recorded media	11428	0,8	927	317	21	9738	401	14	10
23	Manufacture of coke, refined petroleum products and nuclear fuel	256	0,0	24			196	34	2	
24	Manufacture of chemicals and chemical products	3609	0,2	118	89	1	3013	376	6	6
25	Manufacture of rubber and plastic products	5974	0,4	559	313	7	4813	257		24
26	Manufacture of other non-metallic mineral products	8738	0,6	2668	212	6	5453	380	5	14
27	Manufacture of basic metals	2403	0,2	168	39	3	1976	207	3	7
28	Manufacture of fabricated metal products, except machinery and equipment	16169	1,1	3831	361	23	11162	719	11	62
29	Manufacture of machinery and equipment n.e.c.	3695	0,2	103	44	7	3097	420	19	5
30	Manufacture of office machinery and computers	1752	0,1	15	25	4	1628	80		
31	Manufacture of electrical machinery and apparatus n.e.c.	1873	0,1	106	44	6	1567	144		6
32	Manufacture of radio, television and communication equipment and apparatus	840	0,1	56	14	4	692	73		1
33	Manufacture of medical, precision and optical instruments, watches and clocks	2453	0,2	589	17	2	1741	100		4
34	Manufacture of motor vehicles, trailers and semi-trailers	885	0,1	30	31	3	696	123		2
35	Manufacture of other transport equipment	1827	0,1	269	86	7	1269	121	73	2
36	Manufacture of furniture; manufacturing n.e.c.	14842	1,0	4239	284	16	9806	334	5	158
37	Recycling	4670	0,3	417	51	5	4024	172		1
40	Electricity, gas, steam and hot water supply	2852	0,2	834	3	1	1422	504	88	
41	Collection, purification and distribution of water	3531	0,2	1621	2		1646	189	73	
45	Construction	83438	5,6	22575	611	42	57677	2403	53	77

Table no. 6
(continuing)

**The number of incorporations in the Trade Register, by field of activity*
and categories, during the period of December 1990 - June 2006**

CAEN segment	Field of activity	Total		out of which:						
				PF+AF	companies: 1101440				RA	OC
		SNC	SCS		SRL	SA				
		No.	%	No.	No.	No.	No.	No.	No.	
0	1	2	3	4	5	6	7	8	9	10
	Total ROMÂNIA	1489561	100,0	381397	32644	1561	1035918	31311	1332	5392
50	Sale, maintenance and repair of motor vehicles and motorcycles; retail sale of automotive fuel	52130	3,5	8166	1244		41615	1023	6	42
51	Wholesale trade and commission trade, except of motor vehicles and motorcycles	195706	13,1	16677	4523	150	170762	3277	35	282
52	Retail trade, except of motor vehicles and motorcycles; repair of personal and household goods	486394	32,7	172119	11914	557	296934	2484	5	2380
55	Hotels and restaurants	57392	3,9	13749	1635	126	40937	777	73	95
60	Land transport; transport via pipelines	76686	5,1	34554	844	37	40157	1051	33	10
61	Water transport	829	0,1	151	82	8	453	64	70	1
62	Air transport	290	0,0	17			217	46	10	
63	Supporting and auxiliary transport activities; activities of travel agencies	9836	0,7	625	220	14	8434	436	96	11
64	Post and telecommunications	6550	0,4	493	11	1	5738	293	11	3
65	Financial intermediation, except insurance and pension funding	5963	0,4	143	15		2598	2172	2	1033
66	Insurance and pension funding, except compulsory social security	1966	0,1	609	1		505	850		1
67	Activities auxiliary to financial intermediation	6336	0,4	1249	6	2	4791	280		8
70	Real estate activities	19283	1,3	691	28	9	17964	567	17	7
71	Renting of machinery and equipment without operator and of personal and household goods	3123	0,2	624	116	8	2211	93	70	1
72	Computer and related activities	21044	1,4	3719	119	13	16806	382	2	3
73	Research and development	1646	0,1	238	11	2	1180	170	43	2
74	Other business activities	99890	6,7	20464	790	73	76771	1625	106	60
75	Public administration and defence; compulsory social security	358	0,0	89	5		216	26	21	1
80	Education	6169	0,4	3136	62	5	2901	65		
85	Health and social work	15492	1,0	2090	233	15	13068	82	3	1
90	Sewage and refuse disposal, sanitation and similar activities	827	0,1	87	13	2	602	103	18	
91	Activities of membership organizations n.e.c.	210	0,0	92	1		99	15		3
92	Recreational, cultural and sporting activities	15197	1,0	3859	202	14	10747	293	70	12
93	Other service activities	24363	1,6	10318	418	42	13077	305	76	126
95	Activities of households as employers of domestic staff	761	0,1	459	6	1	291	3		1
96	Extra-territorial organizations and bodies	10	0,0	10						

Table no. 7

**Operations carried on with the Trade Registers,
by counties and categories,
in June 2006**

County	Total of operations carried on		out of which:							
			New incorporations		Changes in statutory documents		out of which: of liquidation, dissolution		Strike off companies	
	No.	%	No.	%	No.	%	No.	%	No.	%
0	1	2	3	4	5	6	7	8	9	10
Total ROMÂNIA	188409	100,0	12109	6,4	154103	81,8	3792	2,0	22197	11,8
ALBA	2564	100,0	214	8,3	1923	75,0	4	0,2	427	16,7
ARAD	4169	100,0	331	7,9	3770	90,4	28	0,7	68	1,6
ARGES	3073	100,0	300	9,8	2571	83,7	31	1,0	202	6,6
BACAU	3721	100,0	300	8,1	3384	90,9	56	1,5	37	1,0
BIHOR	4739	100,0	374	7,9	4173	88,1	132	2,8	192	4,1
BISTRITA-NASAUD	1402	100,0	124	8,8	1155	82,4	6	0,4	123	8,8
BOTOSANI	4075	100,0	161	4,0	2361	57,9	7	0,2	1553	38,1
BRASOV	6050	100,0	395	6,5	5577	92,2	17	0,3	78	1,3
BRAILA	2685	100,0	129	4,8	2186	81,4	5	0,2	370	13,8
BUZAU	2205	100,0	210	9,5	1957	88,8	78	3,5	38	1,7
CARAS-SEVERIN	1786	100,0	151	8,5	1509	84,5	78	4,4	126	7,1
CALARASI	1746	100,0	90	5,2	1653	94,7	90	5,2	3	0,2
CLUJ	11079	100,0	587	5,3	8024	72,4	95	0,9	2468	22,3
CONSTANTA	10372	100,0	484	4,7	8448	81,5	20	0,2	1440	13,9
COVASNA	745	100,0	92	12,3	641	86,0	3	0,4	12	1,6
DAMBOVITA	1601	100,0	217	13,6	1337	83,5	108	6,7	47	2,9
DOLJ	5533	100,0	314	5,7	5174	93,5	521	9,4	45	0,8
GALATI	3582	100,0	253	7,1	3265	91,2	114	3,2	64	1,8
GIURGIU	1721	100,0	101	5,9	1209	70,2	51	3,0	411	23,9
GORJ	3947	100,0	149	3,8	3258	82,5	59	1,5	540	13,7
HARGHITA	3006	100,0	199	6,6	2777	92,4	79	2,6	30	1,0
HUNEDOARA	2360	100,0	228	9,7	2109	89,4	64	2,7	23	1,0
IALOMITA	1187	100,0	101	8,5	1052	88,6			34	2,9
IASI	4646	100,0	446	9,6	4172	89,8	84	1,8	28	0,6
MARAMURES	2745	100,0	301	11,0	2350	85,6	17	0,6	94	3,4
MEHEDINTI	1805	100,0	120	6,6	1645	91,1	280	15,5	40	2,2
MURES	9162	100,0	320	3,5	6712	73,3	64	0,7	2130	23,2
NEAMT	4535	100,0	211	4,7	3473	76,6	26	0,6	851	18,8
OLT	928	100,0	123	13,3	774	83,4	20	2,2	31	3,3
PRAHOVA	5391	100,0	402	7,5	4941	91,7	228	4,2	48	0,9
SALAJ	1494	100,0	146	9,8	1304	87,3	1	0,1	44	2,9
SATU MARE	2738	100,0	201	7,3	2508	91,6	50	1,8	29	1,1
SIBIU	4455	100,0	290	6,5	3393	76,2	29	0,7	772	17,3
SUCEAVA	3213	100,0	316	9,8	2525	78,6	10	0,3	372	11,6
TELEORMAN	2556	100,0	100	3,9	1592	62,3	3	0,1	864	33,8
TIMIS	3478	100,0	590	17,0	2842	81,7	100	2,9	46	1,3
TULCEA	4622	100,0	136	2,9	3371	72,9	34	0,7	1115	24,1
VASLUI	1799	100,0	122	6,8	1403	78,0	10	0,6	274	15,2
VALCEA	1792	100,0	178	9,9	1576	87,9	58	3,2	38	2,1
VRANCEA	1711	100,0	127	7,4	1507	88,1	1	0,1	77	4,5
MUN. BUCURESTI	45997	100,0	2145	4,7	36876	80,2	1119	2,4	6976	15,2
ILFOV	1994	100,0	331	16,6	1626	81,5	12	0,6	37	1,9

*) by effect of implementation of Law no. 314/2001, art.1 and art. 6

*** Less than 0,01%

Table no. 8

**The number of incorporations in the Trade Register,
by counties and sources of capital,
in June 2006**

County	Total		out of which:					Rnking by: *	
			Private capital			State majority capital			Mixed capital (state+priva)
			out of which:			out of which:			
			PF+AF	Companies	OC	RA	Companie s		Companie s
No.	%	No.	No.	No.	No.	No.	No.		
0	1	2	3	4	5	6	7	8	9
Total ROMÂNIA	12109	100,0	4167	7939	1	1		1	X
ALBA	214	1,8	84	129		1			21
ARAD	331	2,7	127	204					9
ARGES	300	2,5	102	198					15
BACAU	300	2,5	107	193					16
BIHOR	374	3,1	177	197					8
BISTRITA-NASAUD	124	1,0	52	72					34
BOTOSANI	161	1,3	103	58					27
BRASOV	395	3,3	113	282					7
BRAILA	129	1,1	32	97					32
BUZAU	210	1,7	68	142					23
CARAS-SEVERIN	151	1,2	58	93					28
CALARASI	90	0,7	33	57					42
CLUJ	587	4,8	202	385					3
CONSTANTA	484	4,0	144	340					4
COVASNA	92	0,8	44	48					41
DAMBOVITA	217	1,8	115	102					20
DOLJ	314	2,6	88	226					13
GALATI	253	2,1	83	170					18
GIURGIU	101	0,8	37	64					38
GORJ	149	1,2	63	86					29
HARGHITA	199	1,6	106	92	1				25
HUNEDOARA	228	1,9	57	171					19
IALOMITA	101	0,8	27	74					39
IASI	446	3,7	140	306					5
MARAMURES	301	2,5	142	159					14
MEHEDINTI	120	1,0	65	55					37
MURES	320	2,6	163	157					11
NEAMT	211	1,7	91	120					22
OLT	123	1,0	50	73					35
PRAHOVA	402	3,3	174	228					6
SALAJ	146	1,2	65	81					30
SATU MARE	201	1,7	91	110					24
SIBIU	290	2,4	111	179					17
SUCEAVA	316	2,6	189	127					12
TELEORMAN	100	0,8	36	64					40
TIMIS	590	4,9	173	417					2
TULCEA	136	1,1	82	54					31
VASLUI	122	1,0	52	70					36
VALCEA	178	1,5	79	99					26
VRANCEA	127	1,0	56	71					33
MUN. BUCURESTI	2145	17,7	286	1858				1	1
ILFOV	331	2,7	100	231					10

*) The total number of incorporations (col 1)

*** Less than 0,01%

Table no.9

**The number of incorporations in the Trade Register,
by counties and category
in June 2006**

County	Total		out of which:						
			PF+AF	companies: 7940				RA	OC
	SNC	SCS		SRL	SA	No.	No.		
	No.	%	No.	No.	No.			No.	No.
0	1	2	3	4	5	6	7	8	9
Total ROMÂNIA	12109	100,0	4167	1		7873	66	1	1
ALBA	214	1,8	84			129		1	
ARAD	331	2,7	127			200	4		
ARGES	300	2,5	102			197	1		
BACAU	300	2,5	107			192	1		
BIHOR	374	3,1	177			196	1		
BISTRITA-NASAUD	124	1,0	52			71	1		
BOTOSANI	161	1,3	103			57	1		
BRASOV	395	3,3	113			280	2		
BRAILA	129	1,1	32			96	1		
BUZAU	210	1,7	68			138	4		
CARAS-SEVERIN	151	1,2	58			92	1		
CALARASI	90	0,7	33			56	1		
CLUJ	587	4,8	202			382	3		
CONSTANTA	484	4,0	144			338	2		
COVASNA	92	0,8	44			47	1		
DAMBOVITA	217	1,8	115			101	1		
DOLJ	314	2,6	88			225	1		
GALATI	253	2,1	83			166	4		
GIURGIU	101	0,8	37			64			
GORJ	149	1,2	63			85	1		
HARGHITA	199	1,6	106			91	1		1
HUNEDOARA	228	1,9	57			171			
IALOMITA	101	0,8	27			71	3		
IASI	446	3,7	140			306			
MARAMURES	301	2,5	142			158	1		
MEHEDINTI	120	1,0	65			55			
MURES	320	2,6	163			157			
NEAMT	211	1,7	91			120			
OLT	123	1,0	50			73			
PRAHOVA	402	3,3	174			226	2		
SALAJ	146	1,2	65			81			
SATU MARE	201	1,7	91			107	3		
SIBIU	290	2,4	111			178	1		
SUCEAVA	316	2,6	189			125	2		
TELEORMAN	100	0,8	36			63	1		
TIMIS	590	4,9	173	1		415	1		
TULCEA	136	1,1	82			54			
VASLUI	122	1,0	52			70			
VALCEA	178	1,5	79			99			
VRANCEA	127	1,0	56			71			
MUN. BUCURESTI	2145	17,7	286			1840	19		
ILFOV	331	2,7	100			230	1		

Table no. 10

**The number of incorporations in the Trade Register, by field of activity*
and categories in June 2006**

CAEN segment	Field of activity	Total		out of which:						
				PF+AF	companies: 7940				RA	OC
		No.	%		SNC	SCS	SRL	SA		
				No.	No.	No.	No.	No.	No.	
0	1	2	3	4	5	6	7	8	9	10
	Total ROMÂNIA	12109	100,0	4167	1		7873	66	1	1
1	Agriculture, hunting and related service activities	792	6,5	461			327	4		
2	Forestry, logging and related service activities	47	0,4	5			40	1	1	
5	Fishing, fish farming and related service activities	67	0,6	46			21			
10	Mining of coal and lignite; extraction of peat	1	0,0				1			
11	Extraction of crude petroleum and natural gas; service activities incidental to oil and gas extraction, excluding surveying	1	0,0				1			
12	Mining of uranium and thorium ores									
13	Mining of metal ores	3	0,0				3			
14	Other mining and quarrying	16	0,1				16			
15	Manufacture of food products and beverages	144	1,2	65			76	3		
16	Manufacture of tobacco products									
17	Manufacture of textiles	34	0,3	9			25			
18	Manufacture of wearing apparel; dressing and dyeing of fur	64	0,5	21			43			
19	Tanning and dressing of leather; manufacture of luggage, handbags, saddlery, harness and footwear	18	0,1	4			14			
20	Manufacture of wood and of products of wood and cork, except furniture; manufacture of articles of straw and plaiting materials	154	1,3	78			76			
21	Manufacture of pulp, paper and paper products	10	0,1	1			9			
22	Publishing, printing and reproduction of recorded media	68	0,6	13			55			
23	Manufacture of coke, refined petroleum products and nuclear fuel									
24	Manufacture of chemicals and chemical products	18	0,1	2			16			
25	Manufacture of rubber and plastic products	48	0,4	5			42	1		
26	Manufacture of other non-metallic mineral products	99	0,8	37			60	1		1
27	Manufacture of basic metals	7	0,1	2			5			
28	Manufacture of fabricated metal products, except machinery and equipment	165	1,4	75			90			
29	Manufacture of machinery and equipment n.e.c.	11	0,1	2			9			
30	Manufacture of office machinery and computers	3	0,0				3			
31	Manufacture of electrical machinery and apparatus n.e.c.	10	0,1	1			9			
32	Manufacture of radio, television and communication equipment and apparatus	2	0,0				2			
33	Manufacture of medical, precision and optical instruments, watches and clocks	18	0,1	3			15			
34	Manufacture of motor vehicles, trailers and semi-trailers	3	0,0				3			
35	Manufacture of other transport equipment	9	0,1	2			7			
36	Manufacture of furniture; manufacturing n.e.c.	83	0,7	22			60	1		
37	Recycling	43	0,4	3			40			
40	Electricity, gas, steam and hot water supply	8	0,1				7	1		
41	Collection, purification and distribution of water	2	0,0	2						
45	Construction	1610	13,3	585			1023	2		

*)Field of activity declared when registered, according to CAEN classification

Table no. 10
(continuance)

**The number of incorporations in the Trade Register, by field of activity*
and categories in June 2006**

CAEN segment	Field of activity	Total		out of which:						
				PF+AF	companies: 7940				RA	OC
		SNC	SCS		SRL	SA	No.	No.		
		No.	%	No.	No.	No.			No.	No.
0	1	2	3	4	5	6	7	8	9	10
	Total ROMÂNIA	12109	100,0	4167	1		7873	66	1	1
50	Sale, maintenance and repair of motor vehicles and motorcycles; retail sale of automotive fuel	321	2,7	69			252			
51	Wholesale trade and commission trade, except of motor vehicles and motorcycles	1172	9,7	236			930	6		
52	Retail trade, except of motor vehicles and motorcycles; repair of personal and household goods	2477	20,5	1128			1349			
55	Hotels and restaurants	555	4,6	128			426	1		
60	Land transport; transport via pipelines	628	5,2	241			387			
61	Water transport	3	0,0	2			1			
62	Air transport	1	0,0					1		
63	Supporting and auxiliary transport activities; activities of travel agencies	94	0,8	8			84	2		
64	Post and telecommunications	101	0,8	30			70	1		
65	Financial intermediation, except insurance and pension funding	88	0,7				66	22		
66	Insurance and pension funding, except compulsory social security	5	0,0	1			1	3		
67	Activities auxiliary to financial intermediation	81	0,7	8			73			
70	Real estate activities	453	3,7	10			438	5		
71	Renting of machinery and equipment without operator and of personal and household goods	40	0,3	11			29			
72	Computer and related activities	375	3,1	169			206			
73	Research and development	4	0,0				4			
74	Other business activities	1414	11,7	339	1		1064	10		
75	Public administration and defence; compulsory social security									
80	Education	43	0,4	13			30			
85	Health and social work	110	0,9	6			103	1		
90	Sewage and refuse disposal, sanitation and similar activities	14	0,1	4			10			
91	Activities of membership organizations n.e.c.									
92	Recreational, cultural and sporting activities	292	2,4	155			137			
93	Other service activities	272	2,2	157			115			
95	Activities of households as employers of domestic staff	6	0,0	6						
96	Extra-territorial organizations and bodies	1	0,0	1						

*)Field of activity declared when registered, according to CAEN classification

Table no. 11

**Number of companies registered and the amount
of subscribed capital, by county in June 2006**

County	Total registered companies		Subscribed capital		Average subscribed capital on company
	No.	%	mii RON	%	mii RON
0	1	2	3	4	5
Total ROMÂNIA	7940	100,0	520292,9	100,0	65,8
ALBA	129	1,6	532,5	0,1	4,1
ARAD	204	2,6	5740,4	1,1	28,4
ARGES	198	2,5	4146,2	0,8	20,9
BACAU	193	2,4	6043,1	1,2	31,5
BIHOR	197	2,5	236,6	0,0	1,2
BISTRITA-NASAUD	72	0,9	1461,0	0,3	20,3
BOTOSANI	58	0,7	278,5	0,1	4,8
BRASOV	282	3,6	2908,6	0,6	10,4
BRAILA	97	1,2	42,8	***	0,4
BUZAU	142	1,8	1185,2	0,2	8,5
CARAS-SEVERIN	93	1,2	55,9	0,0	0,6
CALARASI	57	0,7	367988,7	70,7	6455,9
CLUJ	385	4,8	3460,1	0,7	9,0
CONSTANTA	340	4,3	1638,6	0,3	4,8
COVASNA	48	0,6	12813,9	2,5	267,0
DAMBOVITA	102	1,3	46,6	***	0,5
DOLJ	226	2,8	81,2	0,0	0,4
GALATI	170	2,1	699,0	0,1	4,2
GIURGIU	64	0,8	26,2	***	0,4
GORJ	86	1,1	32,9	***	0,4
HARGHITA	92	1,2	471,8	0,1	5,1
HUNEDOARA	171	2,2	114,0	0,0	0,7
IALOMITA	74	0,9	3803,6	0,7	52,8
IASI	306	3,9	201,6	0,0	0,7
MARAMURES	159	2,0	162,7	0,0	1,0
MEHEDINTI	55	0,7	13,1	***	0,2
MURES	157	2,0	1189,4	0,2	7,6
NEAMT	120	1,5	743,5	0,1	6,2
OLT	73	0,9	127,4	0,0	1,7
PRAHOVA	228	2,9	18058,6	3,5	79,6
SALAJ	81	1,0	260,9	0,1	3,2
SATU MARE	110	1,4	2442,0	0,5	22,2
SIBIU	179	2,3	621,4	0,1	3,5
SUCEAVA	127	1,6	533,7	0,1	4,2
TELEORMAN	64	0,8	24,2	***	0,4
TIMIS	417	5,3	795,2	0,2	1,9
TULCEA	54	0,7	41,6	***	0,8
VASLUI	70	0,9	25,9	***	0,4
VALCEA	99	1,2	69,6	0,0	0,7
VRANCEA	71	0,9	63,6	0,0	0,9
MUN. BUCURESTI	1859	23,4	76195,0	14,6	41,2
ILFOV	231	2,9	4916,1	0,9	21,3

Note: The average does not include filials because according to the

**** Less than 0,01%*

Table no. 12

**Number of registered companies and the amount
of subscribed capital by category,
in June 2006**

Company type	Total registered companies		Subscribed capital		Average subscribed capital on company
	No.	%	mii RON	%	mil. RON
0	1	2	3	4	5
Total ROMÂNIA	7940	100,0	520292,9	100,0	65,8
SNC	1	0,0	0,2	***	0,2
SCS					
SA	66	0,8	78850,0	15,2	1923,2
SRL	7873	99,2	441442,8	84,8	56,2
SCA					

Note: The average does not include filials because according to the Law no.31/1990 they are not juridical persons

*** Less than 0,01%

Diagram no.5

