



MINISTRY OF JUSTICE

THE NATIONAL TRADE REGISTER OFFICE

București, Bd. Unirii nr. 74, Bl. J3b, tronson II+III, sector 3; Telefon: +40 21 316.08.04, 316.08.10; Fax: +40 21 316.08.03 Cod poștal: 030837  
Website: [www.onrc.ro](http://www.onrc.ro); E-mail: [onrc@onrc.ro](mailto:onrc@onrc.ro); Cod de identificare Fiscală: 14942091; înregistrat ca operator date personale sub nr.1350

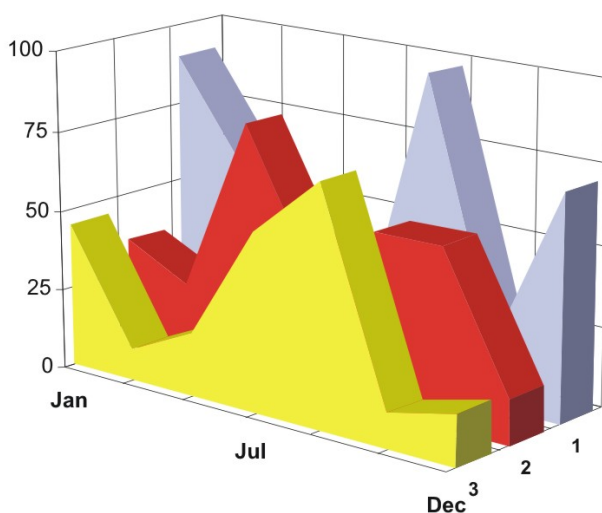
# PROCEEDINGS IN THE CENTRAL TRADE REGISTER

## STATISTICAL SYNTHESIS

OF

**RECORDS IN THE CENTRAL TRADE REGISTER**

**- the 31<sup>th</sup> of May 2006 - provisional data -**



- ISSUE No. 174 -

**MINISTRY OF JUSTICE**  
**THE NATIONAL TRADE REGISTER OFFICE**

---

- Operations of incorporation of companies, changes in statutory documents and strike-off of companies are based on Law No.26/1990 reissued, Law No.31/1990, reissued, OUG No.76/2001, reissued and Methodology Norms No. P/608/1998.
  
- This paper presents the trend in operations registered in The Trade Register Office attached to the law court of Bucharest and in the Trade Register Offices attached to the law court in each county of Romania.
  
- Information recorded in the Central Trade Register concern operations compulsory by law to be registered in the trade registers within the 42 trade register offices attached to the law courts.

*• No part of the content of this publication, in original or in any modified format, may be reproduced, stored in a retrieval system, or transmitted, in any form or by any means, without the prior permission in writing of The Ministry of Justice – The National Trade Register Office.*

*• The content of this publication may be referred to in articles, studies, books, as supporting or explanatory data under the condition only, the source of the information to be clearly and precisely specified.*

# Contents

	Page
<b>1 Explanatory Note</b>	<b>1</b>
<b>2.1 Data for December 1990 – May 2006</b>	<b>3</b>
Table no.1 – Operations registered in the Trade Register, by categories during the period of December 1990 – May 2006, in total by country and counties, rate of categories of operations in total operations country	3
Table no.1.a – Operations registered in the Trade Register, by categories during the period of December 1990 – May 2006, in total by country and counties, counties’ rate in total country	4
Table no. 3 – Number and structure of incorporations in the Trade Register, by years, during the period of December 1990- May 2006	5
Table no.4 – The number of incorporations in the Trade Register, by counties and sources of capital, in the period December 1990 - May 2006	6
Table no. 5 – The number of incorporations in the Trade Register, by counties and categories, during the period of December 1990 – May 2006	7
Table no. 6 – The number of incorporations in the Trade Register, by field of activity and categories, during the period of December 1990 - May 2006	8
<b>2.2 Data for May 2006</b>	<b>10</b>
Table no. 7 – Operations carried on with the Trade Registers, by counties and categories, in May 2006	10
Table no. 8 – The number of incorporations in the Trade Register, by counties and sources of capital, in May 2006	11
Table no. 9 – The number of incorporations in the Trade Register, by counties and category in May 2006	12
Table no. 10 –The number of incorporations in the Trade Register, by field of activity and categories in May 2006	13
Table no. 11 – Number of companies registered and the amount of subscribed capital, by county in May 2006	15
Table no. 12– Number of registered companies and the amount of subscribed capital by category, in May 2006	16
Diagram no. 5 – Average subscribed capital on company in May 2006	16

## Explanatory Note

The Trade Register Office is set-up by Law No. 26/1990, reissued and modified by OUG No. 129/2002, became an active institution since December 1990 and is structured in two levels:

- the national level, represented by the National Trade Register Office organised under the Ministry of Justice
- the local level, represented by the 42 trade register offices attached to the law courts and co-ordinated by the National Trade Register Office

The categories of businessmen compulsory to register in the trade register are:

- natural persons tradesmen and family associations doing usually commercial acts, commercial companies, national companies, companies under state supervision, and co-operative organisations
- subsidiaries registered as commercial companies and legal persons following the legal proceedings of set-up, activity and incorporation according to the type of the legally set-up company.

### Usual Terms:

- incorporation – represents the registration of the company in the trade registry awarding the quality of legal person.

- other statutory documents – represent the official registration of the changes occurred in a company's life, such as: changes in headquarters' address, increase or decrease of the issued capital, merger, liquidation, strike-off, etc.

- strike-off – represents the removal of a company from the trade registry, due to dissolution and liquidation, being also the very moment the company loses its quality of legal person. Data also include the companies under the provisions of Law No. 314/2001.

- change of certificate – represents the obligation of companies set-up before OGU No. 76/2001 republished came in force, to request the incorporation certificate and fiscal registration certificate to be replaced with the new registration certificate containing the given unique registration code.

The ratio of these changes is being calculated as a proportion between the effective number of changes and the number of active companies due to operate the change.

- active company from the legal point of view – a company registered in the trade register and which is not affected by any of the situations leading to the temporary or permanent loss of this status (e.g. dissolution, liquidation, strike-off)

- operations represent all the records in the trade registry including incorporations, other statutory documents and strike-off of companies, irrespective of the object of activity, company's type and origin of the subscribed capital (local or foreign investment).

• **Terms used in tables and charts**

➤ **Number of companies:** represents, depending on the specific table, the number of companies incorporated in the related period, the number of companies being struck-off from the trade registry.

➤ **Amount of the subscribed capital:**

- **total, in local currency:** the amount of the subscribed capital resulted from totalising the amount subscribed (in cash and in kind) in local currency (ROL)

➤ **Regional development:**

*North-East:* Suceava, Botoșani, Neamț, Iași, Bacău, Vaslui.

*South-East:* Vrancea, Galați, Buzău, Brăila, Tulcea, Constanța.

*South-Muntenia:* Argeș, Dâmbovița, Prahova, Teleorman, Giurgiu, Călărași, Ialomița.

*South-West Oltenia:* Gorj, Vâlcea, Dolj, Mehedinți, Olt.

*West:* Arad, Caraș-Severin, Hunedoara, Timiș.

*North-West:* Bihor, Bistrița, Cluj, Satu Mare, Sălaj, Maramureș.

*Center:* Alba, Brașov, Covasna, Harghita, Mureș, Sibiu.

*Bucharest-Ilfov:* București, Ilfov.

CAEN code – The Classification of Activities in the National Economy was approved by HG No. 656/1997, modified by Order No 601 of the President of National Institute of Statistics being compatible with the international classification used in statistic reports and official documents. Activities are ranked upon homogeneity principle by sections, divisions, groups and classes.

Common abbreviations

- **PF** - Natural Persons Tradesman
- **AF** - Family association
- **SNC** - General Partnership
- **SCS** - Limited Partnership
- **SA** - Joint stock company
- **SRL** - Limited liability company
- **RA** - Company Under State Supervision
- **OC** - Co-operative organisation

Source:

The integrated IT system of the trade registry is designed by The National Trade Registry Office according to the provisions of the related legislation in force. The source of information is the computerised system of the trade registers handled by the Trade Register Offices attached to the law courts.

Table no. 1

**Operations registered in the Trade Register, by categories  
during the period of December 1990 - May 2006 in total by country and counties,  
- rate of categories of operations in total operations/country -**

Counties	Total of registered operations		out of which :									
			Registered companies		Changes in statutory documents		out of which :				Strike off companies	
	of liquidation, dissolution						out of which :					
	No.	%	No.	%	No.	%	No.	%	No.	%	No.	%
0	1	2	3	4	5	6	7	8	9	10	11	12
<b>Total ROMÂNIA</b>	<b>6917820</b>	<b>100,0</b>	<b>1477452</b>	<b>100,0</b>	<b>5049450</b>	<b>100,0</b>	<b>9911</b>	<b>100,0</b>	<b>165855</b>	<b>100,0</b>	<b>390918</b>	<b>100,0</b>
ALBA	95592	1,4	22955	1,6	69104	1,4	371	3,7	3596	2,2	3533	0,9
ARAD	154739	2,2	35871	2,4	110157	2,2	369	3,7	2974	1,8	8711	2,2
ARGES	167482	2,4	38125	2,6	121668	2,4	197	2,0	4219	2,5	7689	2,0
BACAU	168137	2,4	37672	2,5	119919	2,4	1003	10,1	5280	3,2	10546	2,7
BIHOR	212837	3,1	43479	2,9	157826	3,1	303	3,1	4598	2,8	11532	2,9
BISTRITA-NASAUD	88483	1,3	18144	1,2	65035	1,3	72	0,7	1120	0,7	5304	1,4
BOTOSANI	63737	0,9	18405	1,2	42591	0,8	66	0,7	1563	0,9	2741	0,7
BRASOV	231133	3,3	45734	3,1	175493	3,5	149	1,5	4892	2,9	9906	2,5
BRAILA	87064	1,3	20803	1,4	63834	1,3	61	0,6	2540	1,5	2427	0,6
BUZAU	133377	1,9	27441	1,9	96690	1,9	146	1,5	2109	1,3	9246	2,4
CARAS-SEVERIN	91742	1,3	18220	1,2	65944	1,3	41	0,4	1922	1,2	7578	1,9
CALARASI	58832	0,9	15084	1,0	41378	0,8	79	0,8			2370	0,6
CLUJ	295631	4,3	67039	4,5	224246	4,4	197	2,0			4346	1,1
CONSTANTA	299646	4,3	62453	4,2	215103	4,3	926	9,3	10621	6,4	22090	5,7
COVASNA	66161	1,0	12686	0,9	49602	1,0	18	0,2	1175	0,7	3873	1,0
DAMBOVITA	109567	1,6	27726	1,9	69886	1,4	98	1,0	2951	1,8	11955	3,1
DOLJ	181119	2,6	39437	2,7	130663	2,6	215	2,2	5633	3,4	11019	2,8
GALATI	200058	2,9	35324	2,4	152238	3,0	125	1,3	5370	3,2	12496	3,2
GIURGIU	46362	0,7	11918	0,8	31177	0,6	47	0,5			3267	0,8
GORJ	92510	1,3	17848	1,2	70162	1,4	48	0,5	2667	1,6	4500	1,2
HARGHITA	100848	1,5	22044	1,5	75410	1,5	51	0,5			3394	0,9
HUNEDOARA	128836	1,9	30668	2,1	88995	1,8	126	1,3	2944	1,8	9173	2,3
IALOMITA	67681	1,0	14050	1,0	48786	1,0	78	0,8	1586	1,0	4845	1,2
IASI	237113	3,4	44878	3,0	181951	3,6	597	6,0	4224	2,5	10284	2,6
MARAMURES	138400	2,0	38265	2,6	93851	1,9	159	1,6	2924	1,8	6284	1,6
MEHEDINTI	73978	1,1	17063	1,2	49591	1,0	55	0,6	3085	1,9	7324	1,9
MURES	163288	2,4	37283	2,5	120110	2,4	83	0,8	2942	1,8	5895	1,5
NEAMT	144554	2,1	33091	2,2	101606	2,0	304	3,1	2435	1,5	9857	2,5
OLT	96258	1,4	21466	1,5	66419	1,3	21	0,2	2033	1,2	8373	2,1
PRAHOVA	245667	3,6	48581	3,3	184886	3,7	274	2,8	3934	2,4	12200	3,1
SALAJ	56704	0,8	14082	1,0	38874	0,8	29	0,3	683	0,4	3748	1,0
SATU MARE	109614	1,6	24703	1,7	77544	1,5	26	0,3	2934	1,8	7367	1,9
SIBIU	146162	2,1	28262	1,9	112681	2,2	31	0,3	2583	1,6	5219	1,3
SUCEAVA	168925	2,4	37931	2,6	118073	2,3	29	0,3	2387	1,4	12921	3,3
TELEORMAN	77536	1,1	16960	1,1	58565	1,2	49	0,5	1504	0,9	2011	0,5
TIMIS	265204	3,8	50630	3,4	200621	4,0	271	2,7	7273	4,4	13953	3,6
TULCEA	68526	1,0	15461	1,0	50340	1,0	149	1,5	1002	0,6	2725	0,7
VASLUI	82971	1,2	19269	1,3	56238	1,1	197	2,0	1385	0,8	7464	1,9
VALCEA	114473	1,7	24814	1,7	82338	1,6	138	1,4	1888	1,1	7321	1,9
VRANCEA	89109	1,3	18471	1,3	67206	1,3	51	0,5	1594	1,0	3432	0,9
MUN. BUCURESTI	1409844	20,4	280872	19,0	1042771	20,7	2641	26,6	51406	31,0	86201	22,1
ILFOV	87920	1,3	22244	1,5	59878	1,2	21	0,2	1879	1,1	5798	1,5

\*) according to the effect of Law No. 314/2001, art.1 și art. 6

\*\*\* Less than 0,01%

Table no. 2

**Operations registered in the Trade Register, by categories  
during the period of December 1990 - May 2006, in total by country and counties,  
- rate of categories of operations in total operations/country -**

Counties	Total of registered operations		out of which :									
			Registered companies		Changes in statutory documents		out of which :				Strike off companies	
	of liquidation, dissolution						out of which :					
	No.	%	No.	%	No.	%	No.	%	No.	%	No.	%
0	1	2	3	4	5	6	7	8	9	10	11	12
<b>Total ROMÂNIA</b>	<b>6917820</b>	<b>100,0</b>	<b>1477452</b>	<b>21,4</b>	<b>5049450</b>	<b>73,0</b>	<b>9911</b>	<b>0,1</b>	<b>165855</b>	<b>2,4</b>	<b>390918</b>	<b>5,7</b>
ALBA	95592	100,0	22955	24,0	69104	72,3	371	0,4	3596	3,8	3533	3,7
ARAD	154739	100,0	35871	23,2	110157	71,2	369	0,2	2974	1,9	8711	5,6
ARGES	167482	100,0	38125	22,8	121668	72,6	197	0,1	4219	2,5	7689	4,6
BACAU	168137	100,0	37672	22,4	119919	71,3	1003	0,6	5280	3,1	10546	6,3
BIHOR	212837	100,0	43479	20,4	157826	74,2	303	0,1	4598	2,2	11532	5,4
BISTRITA-NASAUD	88483	100,0	18144	20,5	65035	73,5	72	0,1	1120	1,3	5304	6,0
BOTOSANI	63737	100,0	18405	28,9	42591	66,8	66	0,1	1563	2,5	2741	4,3
BRASOV	231133	100,0	45734	19,8	175493	75,9	149	0,1	4892	2,1	9906	4,3
BRAILA	87064	100,0	20803	23,9	63834	73,3	61	0,1	2540	2,9	2427	2,8
BUZAU	133377	100,0	27441	20,6	96690	72,5	146	0,1	2109	1,6	9246	6,9
CARAS-SEVERIN	91742	100,0	18220	19,9	65944	71,9	41	0,0	1922	2,1	7578	8,3
CALARASI	58832	100,0	15084	25,6	41378	70,3	79	0,1			2370	4,0
CLUJ	295631	100,0	67039	22,7	224246	75,9	197	0,1			4346	1,5
CONSTANTA	299646	100,0	62453	20,8	215103	71,8	926	0,3	10621	3,5	22090	7,4
COVASNA	66161	100,0	12686	19,2	49602	75,0	18	0,0	1175	1,8	3873	5,9
DAMBOVITA	109567	100,0	27726	25,3	69886	63,8	98	0,1	2951	2,7	11955	10,9
DOLJ	181119	100,0	39437	21,8	130663	72,1	215	0,1	5633	3,1	11019	6,1
GALATI	200058	100,0	35324	17,7	152238	76,1	125	0,1	5370	2,7	12496	6,2
GIURGIU	46362	100,0	11918	25,7	31177	67,2	47	0,1			3267	7,0
GORJ	92510	100,0	17848	19,3	70162	75,8	48	0,1	2667	2,9	4500	4,9
HARGHITA	100848	100,0	22044	21,9	75410	74,8	51	0,1			3394	3,4
HUNEDOARA	128836	100,0	30668	23,8	88995	69,1	126	0,1	2944	2,3	9173	7,1
IALOMITA	67681	100,0	14050	20,8	48786	72,1	78	0,1	1586	2,3	4845	7,2
IASI	237113	100,0	44878	18,9	181951	76,7	597	0,3	4224	1,8	10284	4,3
MARAMURES	138400	100,0	38265	27,6	93851	67,8	159	0,1	2924	2,1	6284	4,5
MEHEDINTI	73978	100,0	17063	23,1	49591	67,0	55	0,1	3085	4,2	7324	9,9
MURES	163288	100,0	37283	22,8	120110	73,6	83	0,1	2942	1,8	5895	3,6
NEAMT	144554	100,0	33091	22,9	101606	70,3	304	0,2	2435	1,7	9857	6,8
OLT	96258	100,0	21466	22,3	66419	69,0	21	0,0	2033	2,1	8373	8,7
PRAHOVA	245667	100,0	48581	19,8	184886	75,3	274	0,1	3934	1,6	12200	5,0
SALAJ	56704	100,0	14082	24,8	38874	68,6	29	0,1	683	1,2	3748	6,6
SATU MARE	109614	100,0	24703	22,5	77544	70,7	26	0,0	2934	2,7	7367	6,7
SIBIU	146162	100,0	28262	19,3	112681	77,1	31	0,0	2583	1,8	5219	3,6
SUCEAVA	168925	100,0	37931	22,5	118073	69,9	29	0,0	2387	1,4	12921	7,6
TELEORMAN	77536	100,0	16960	21,9	58565	75,5	49	0,1	1504	1,9	2011	2,6
TIMIS	265204	100,0	50630	19,1	200621	75,6	271	0,1	7273	2,7	13953	5,3
TULCEA	68526	100,0	15461	22,6	50340	73,5	149	0,2	1002	1,5	2725	4,0
VASLUI	82971	100,0	19269	23,2	56238	67,8	197	0,2	1385	1,7	7464	9,0
VALCEA	114473	100,0	24814	21,7	82338	71,9	138	0,1	1888	1,6	7321	6,4
VRANCEA	89109	100,0	18471	20,7	67206	75,4	51	0,1	1594	1,8	3432	3,9
MUN. BUCURESTI	1409844	100,0	280872	19,9	1042771	74,0	2641	0,2	51406	3,6	86201	6,1
ILFOV	87920	100,0	22244	25,3	59878	68,1	21	0,0	1879	2,1	5798	6,6

\*) according to the effect of Law No. 314/2001, art.1 și art. 6

\*\*\* Less than 0,01%

Table no.3

**Number and structure of incorporations in the Trade Register, by years,  
during the period of December 1990 - May 2006**

Period (year, month)	Registered companies		Percentage	
	No.	%	%	
0	1	2	3	
<b>Total, 31 February 2006, out of which</b>	<b>1477452</b>	<b>89,35</b>		
Year 1990	81	0,01		
Year 1991	95840	6,49		
Year 1992	137456	9,30		
Year 1993	117078	7,92		
Year 1994	137445	9,30		
Year 1995	65479	4,43		
Year 1996	62089	4,20		
Year 1997	55663	3,77		
Year 1998	63878	4,32		
Year 1999	57197	3,87		
Year 2000	57291	3,88		
Year 2001	61265	4,15		
Year 2002	84780	5,74		
Year 2003	123582	8,36		
Year 2004	144284	9,77		
Year 2005	157375			
<b>Year 2006 (I - XII) out of which :</b>	<b>56669</b>			<b>107,7</b>
January	8797			15,5
February	12605			22,2
March	14410			25,4
April	10806			25,4
May	10051			19,1

Note: Column 2 reveals the annual structure of incorporations; column 3 reveals the structure by months during the current year.

\*\*\* Less than 0,01%

**Diagram no.1**

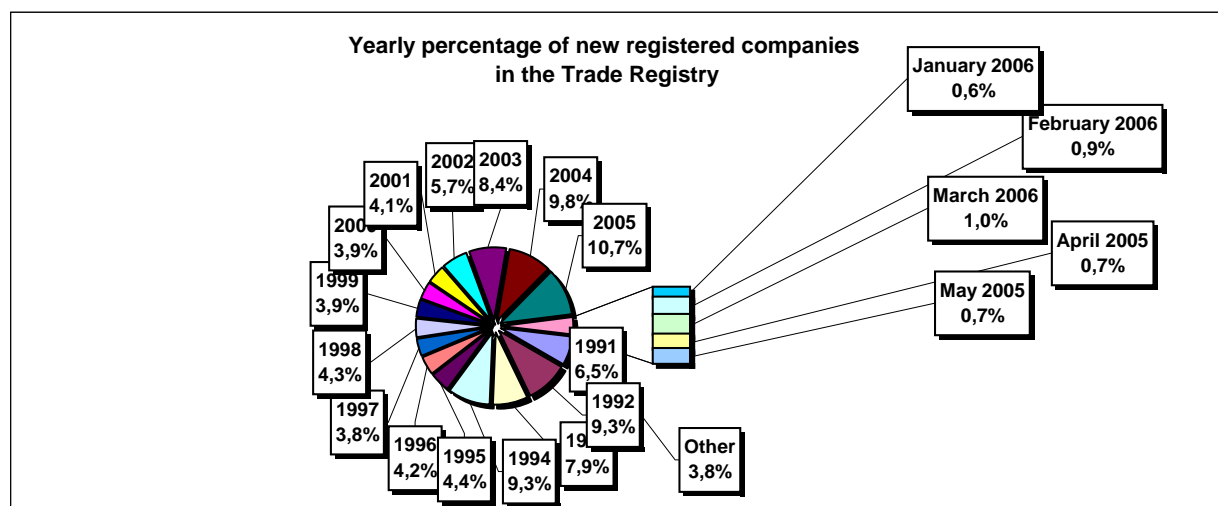


Table no. 4

**The number of incorporations in the Trade Register, by counties and sources of capital, in the period December 1990 - May 2006**

Counties	Total		out of which:					Ranking by: *	
			Private capital			State majority capital			Mixed capital (state+private)
			out of which:			out of which:			Companies
			PF+AF	Companies	OC	RA	Companies		Companies
No.	%	No.	No.	No.	No.	No.	No.		
0	1	2	3	4	5	6	7	8	9
<b>Total ROMÂNIA</b>	<b>1477452</b>	<b>100,0</b>	<b>377230</b>	<b>1082576</b>	<b>5391</b>	<b>1331</b>	<b>2360</b>	<b>8564</b>	<b>X</b>
ALBA	22955	1,6	7895	14667	141	35	47	170	24
ARAD	35872	2,4	13832	21484	157	26	40	333	15
ARGES	38125	2,6	12444	25303	168	29	29	152	11
BACAU	37672	2,5	12614	24600	158	35	42	223	13
BIHOR	43479	2,9	9157	33770	146	37	62	307	8
BISTRITA-NASAUD	18144	1,2	6516	11373	98	19	29	109	33
BOTOSANI	18405	1,2	8304	9667	122	21	172	119	31
BRASOV	45734	3,1	9227	36094	114	42	87	170	6
BRAILA	20803	1,4	5177	15294	96	28	43	165	28
BUZAU	27441	1,9	7957	19143	142	26	42	131	21
CARAS-SEVERIN	18220	1,2	6387	11496	102	33	65	137	32
CALARASI	15084	1,0	4403	10405	86	18	77	95	38
CLUJ	67039	4,5	16631	49905	150	52	40	261	2
CONSTANTA	62453	4,2	11875	49735	203	51	49	540	3
COVASNA	12686	0,9	4221	8233	67	24	32	109	41
DAMBOVITA	27726	1,9	12881	14454	134	29	75	153	20
DOLJ	39437	2,7	7765	31211	162	40	57	202	9
GALATI	35324	2,4	6793	28172	135	30	51	143	16
GIURGIU	11918	0,8	2816	8781	80	22	109	110	42
GORJ	17848	1,2	4104	13327	184	50	83	100	34
HARGHITA	22044	1,5	8454	13210	85	23	43	229	26
HUNEDOARA	30668	2,1	8081	22095	81	37	92	282	18
IALOMITA	14050	1,0	5440	8384	74	15	46	91	40
IASI	44878	3,0	12197	32069	164	34	70	344	7
MARAMURES	38265	2,6	15740	22204	122	37	39	123	10
MEHEDINTI	17063	1,2	5341	11497	82	19	26	98	35
MURES	37283	2,5	13809	23088	155	30	34	167	14
NEAMT	33091	2,2	12226	20480	161	29	30	165	17
OLT	21466	1,5	8599	12493	161	26	64	123	27
PRAHOVA	48581	3,3	14722	33293	177	50	68	271	5
SALAJ	14082	1,0	5502	8363	107	19	28	63	39
SATU MARE	24703	1,7	7904	16516	88	19	42	134	23
SIBIU	28262	1,9	6775	21071	118	32	108	158	19
SUCEAVA	37931	2,6	18227	19188	202	30	64	220	12
TELEORMAN	16960	1,1	5836	10725	152	21	44	182	36
TIMIS	50630	3,4	7832	42207	140	38	68	345	4
TULCEA	15461	1,0	5183	9940	66	18	42	212	37
VASLUI	19269	1,3	9479	9489	109	16	41	135	29
VALCEA	24814	1,7	9825	14631	168	40	37	113	22
VRANCEA	18471	1,3	5611	12599	104	16	27	114	30
MUN. BUCURESTI	280871	19,0	16636	262774	138	115	103	1105	1
ILFOV	22244	1,5	2812	19146	92	20	13	161	25

\*) The total number of incorporations (col 1)

\*\*\* Less than 0,01%

Table no. 5

**The number of incorporations in the Trade Register,  
by counties and categories, during the period of  
December 1990 - May 2006**

County	Total		out of which:						RA	OC
			PF+AF	companies: 1093500						
	SNC	SCS		SRL	SA	No.	No.			
	No.	%	No.	No.	No.			No.	No.	No.
0	1	2	3	4	5	6	7	8	9	
<b>Total ROMÂNIA</b>	<b>1477452</b>	<b>100,0</b>	<b>377230</b>	<b>32643</b>	<b>1561</b>	<b>1028045</b>	<b>31245</b>	<b>1331</b>	<b>5391</b>	
ALBA	22955	1,6	7895	888	11	13444	541	35	141	
ARAD	35871	2,4	13832	53	10	21139	653	26	157	
ARGES	38125	2,6	12444	107	14	24568	795	29	168	
BACAU	37672	2,5	12614	1299	4	22855	706	35	158	
BIHOR	43479	2,9	9157	125	47	33090	877	37	146	
BISTRITA-NASAUD	18144	1,2	6516	146	21	10940	404	19	98	
BOTOSANI	18405	1,2	8304	468	1	9046	443	21	122	
BRASOV	45734	3,1	9227	239	20	35272	820	42	114	
BRAILA	20803	1,4	5177	376	12	14611	503	28	96	
BUZAU	27441	1,9	7957	3747	46	14973	550	26	142	
CARAS-SEVERIN	18220	1,2	6387	117	8	11117	456	33	102	
CALARASI	15084	1,0	4403	609	3	9622	343	18	86	
CLUJ	67039	4,5	16631	2111	18	46880	1197	52	150	
CONSTANTA	62453	4,2	11875	311	23	48552	1438	51	203	
COVASNA	12686	0,9	4221	148	4	7929	293	24	67	
DAMBOVITA	27726	1,9	12881	60	8	14137	477	29	134	
DOLJ	39437	2,7	7765	1560	8	29057	845	40	162	
GALATI	35324	2,4	6793	1574	6	25975	811	30	135	
GIURGIU	11918	0,8	2816	35	8	8644	313	22	80	
GORJ	17848	1,2	4104	29	1	13007	473	50	184	
HARGHITA	22044	1,5	8454	62	6	12938	476	23	85	
HUNEDOARA	30668	2,1	8081	1166	98	20551	654	37	81	
IALOMITA	14050	1,0	5440	266	11	7909	335	15	74	
IASI	44878	3,0	12197	506	111	30889	975	34	164	
MARAMURES	38265	2,6	15740	1926	23	19842	574	37	122	
MEHEDINTI	17063	1,2	5341	427	3	10871	320	19	82	
MURES	37283	2,5	13809	37	34	22581	637	30	155	
NEAMT	33091	2,2	12226	3293	30	16700	652	29	161	
OLT	21466	1,5	8599	1611	1	10590	478	26	161	
PRAHOVA	48581	3,3	14722	3122	14	29634	862	50	177	
SALAJ	14082	1,0	5502	600	4	7572	278	19	107	
SATU MARE	24703	1,7	7904	283	5	15949	455	19	88	
SIBIU	28262	1,9	6775	775	48	19882	632	32	118	
SUCEAVA	37931	2,6	18227	438	8	18457	569	30	202	
TELEORMAN	16960	1,1	5836	272	399	9880	400	21	152	
TIMIS	50630	3,4	7832	606	27	40774	1213	38	140	
TULCEA	15461	1,0	5183	1363	114	8251	466	18	66	
VASLUI	19269	1,3	9479	90	11	9170	394	16	109	
VALCEA	24814	1,7	9825	363	6	13947	465	40	168	
VRANCEA	18471	1,3	5611	356	10	11935	439	16	104	
MUN. BUCURESTI	280872	19,0	16636	1030	295	256189	6468	115	138	
ILFOV	22244	1,5	2812	49	30	18676	565	20	92	

Table no. 6

**The number of incorporations in the Trade Register, by field of activity\*  
during the period of December 1990 - May 2006**

CAEN segment	Field of activity	Total		out of which:						
				PF+AF	companies:				RA	OC
		1093500								
		No.	%	No.	SNC No.	SCS No.	SRL No.	SA No.	No.	No.
0	1	2	3	4	5	6	7	8	9	10
	<b>Total ROMÂNIA</b>	<b>1477452</b>	<b>100,0</b>	<b>377230</b>	<b>32643</b>	<b>1561</b>	<b>1028045</b>	<b>31245</b>	<b>1331</b>	<b>5391</b>
1	Agriculture, hunting and related service activities	59941	4,1	13851	2024	44	40080	3773	52	117
2	Forestry, logging and related service activities	7861	0,5	1015	152	3	6379	221	83	8
5	Fishing, fish farming and related service activities	2714	0,2	1527	17	3	1114	53		
10	Mining of coal and lignite; extraction of peat	110	0,0	2			72	32	4	
11	Extraction of crude petroleum and natural gas; service activities incidental to oil and gas extraction, excluding surveying	319	0,0	3	1		147	122	46	
12	Mining of uranium and thorium ores	133	0,0	32			95	6		
13	Mining of metal ores	524	0,0	163			298	55	8	
14	Other mining and quarrying	1460	0,1	108	9	1	1172	167	2	1
15	Manufacture of food products and beverages	72322	4,9	13940	3260	149	52876	1844	5	248
16	Manufacture of tobacco products	285	0,0	47			206	31	1	
17	Manufacture of textiles	11471	0,8	2306	556	16	8042	406		145
18	Manufacture of wearing apparel; dressing and dyeing of fur	20318	1,4	4586	875	38	14157	356	1	305
19	Tanning and dressing of leather; manufacture of luggage, handbags, saddlery, harness and footwear	5122	0,3	883	112	6	3946	123	1	51
20	Manufacture of wood and of products of wood and cork, except furniture; manufacture of articles of straw and plaiting materials	24162	1,6	8507	575	29	14504	496	9	42
21	Manufacture of pulp, paper and paper products	1716	0,1	117	21	1	1467	97		13
22	Publishing, printing and reproduction of recorded media	11360	0,8	914	317	21	9683	401	14	10
23	Manufacture of coke, refined petroleum products and nuclear fuel	256	0,0	24			196	34	2	
24	Manufacture of chemicals and chemical products	3591	0,2	116	89	1	2997	376	6	6
25	Manufacture of rubber and plastic products	5926	0,4	554	313	7	4771	256		24
26	Manufacture of other non-metallic mineral products	8639	0,6	2631	212	6	5393	379	5	13
27	Manufacture of basic metals	2396	0,2	166	39	3	1971	207	3	7
28	Manufacture of fabricated metal products, except machinery and equipment	16004	1,1	3756	361	23	11072	719	11	62
29	Manufacture of machinery and equipment n.e.c.	3684	0,2	101	44	7	3088	420	19	5
30	Manufacture of office machinery and computers	1749	0,1	15	25	4	1625	80		
31	Manufacture of electrical machinery and apparatus n.e.c.	1863	0,1	105	44	6	1558	144		6
32	Manufacture of radio, television and communication equipment and apparatus	838	0,1	56	14	4	690	73		1
33	Manufacture of medical, precision and optical instruments, watches and clocks	2435	0,2	586	17	2	1726	100		4
34	Manufacture of motor vehicles, trailers and semi-trailers	882	0,1	30	31	3	693	123		2
35	Manufacture of other transport equipment	1818	0,1	267	86	7	1262	121	73	2
36	Manufacture of furniture; manufacturing n.e.c.	14759	1,0	4217	284	16	9746	333	5	158
37	Recycling	4627	0,3	414	51	5	3984	172		1
40	Electricity, gas, steam and hot water supply	2844	0,2	834	3	1	1415	503	88	
41	Collection, purification and distribution of water	3529	0,2	1619	2		1646	189	73	
45	Construction	81828	5,5	21990	611	42	56654	2401	53	77

\*)Field of activity declared when registered, according to CAEN classification

**Table no. 6**  
(continuing)

**The number of incorporations in the Trade Register, by field of activity\*  
and categories, during the period of December 1990 - May 2006**

CAEN segment	Field of activity	Total		out of which:						
				PF+AF	companies: 1093500				RA	OC
		SNC	SCS		SRL	SA				
		No.	%	No.	No.	No.	No.	No.	No.	
0	1	2	3	4	5	6	7	8	9	10
	<b>Total ROMÂNIA</b>	<b>1477452</b>	<b>100,0</b>	<b>377230</b>	<b>32643</b>	<b>1561</b>	<b>1028045</b>	<b>31245</b>	<b>1331</b>	<b>5391</b>
50	Sale, maintenance and repair of motor vehicles and motorcycles; retail sale of automotive fuel	51809	3,5	8097	1244		41363	1023	6	42
51	Wholesale trade and commission trade, except of motor vehicles and motorcycles	194534	13,2	16441	4523	150	169832	3271	35	282
52	Retail trade, except of motor vehicles and motorcycles; repair of personal and household goods	483917	32,8	170991	11914	557	295585	2484	5	2380
55	Hotels and restaurants	56837	3,8	13621	1635	126	40511	776	73	95
60	Land transport; transport via pipelines	76058	5,1	34313	844	37	39770	1051	33	10
61	Water transport	826	0,1	149	82	8	452	64	70	1
62	Air transport	289	0,0	17			217	45	10	
63	Supporting and auxiliary transport activities; activities of travel agencies	9742	0,7	617	220	14	8350	434	96	11
64	Post and telecommunications	6449	0,4	463	11	1	5668	292	11	3
65	Financial intermediation, except insurance and pension funding	5875	0,4	143	15		2532	2150	2	1033
66	Insurance and pension funding, except compulsory social security	1961	0,1	608	1		504	847		1
67	Activities auxiliary to financial intermediation	6255	0,4	1241	6	2	4718	280		8
70	Real estate activities	18830	1,3	681	28	9	17526	562	17	7
71	Renting of machinery and equipment without operator and of personal and household goods	3083	0,2	613	116	8	2182	93	70	1
72	Computer and related activities	20669	1,4	3550	119	13	16600	382	2	3
73	Research and development	1642	0,1	238	11	2	1176	170	43	2
74	Other business activities	98476	6,7	20125	789	73	75707	1615	106	60
75	Public administration and defence; compulsory social security	358	0,0	89	5		216	26	21	1
80	Education	6126	0,4	3123	62	5	2871	65		
85	Health and social work	15382	1,0	2084	233	15	12965	81	3	1
90	Sewage and refuse disposal, sanitation and similar activities	813	0,1	83	13	2	592	103	18	
91	Activities of membership organizations n.e.c.	210	0,0	92	1		99	15		3
92	Recreational, cultural and sporting activities	14905	1,0	3704	202	14	10610	293	70	12
93	Other service activities	24091	1,6	10161	418	42	12962	305	76	126
95	Activities of households as employers of domestic staff	755	0,1	453	6	1	291	3		1
96	Extra-territorial organizations and bodies	9	0,0	9						

\*)Field of activity declared when registered, according to CAEN classification

Table no. 7

**Operations carried on with the Trade Registers,  
by counties and categories,  
in May 2006**

County	Total of operations carried on		out of which:							
			New incorporations		Changes in statutory documents		out of which: of liquidation, dissolution		Strike off companies	
	No.	%	No.	%	No.	%	No.	%	No.	%
0	1	2	3	4	5	6	7	8	9	10
<b>Total ROMÂNIA</b>	<b>194130</b>	<b>100,0</b>	<b>10051</b>	<b>5,2</b>	<b>157927</b>	<b>81,4</b>	<b>5105</b>	<b>2,6</b>	<b>26152</b>	<b>13,5</b>
ALBA	2039	100,0	173	8,5	1832	89,8	2	0,1	34	1,7
ARAD	4689	100,0	322	6,9	3344	71,3	24	0,5	1023	21,8
ARGES	6239	100,0	246	3,9	5351	85,8	101	1,6	642	10,3
BACAU	10914	100,0	252	2,3	6899	63,2	73	0,7	3763	34,5
BIHOR	10322	100,0	328	3,2	6986	67,7	173	1,7	3008	29,1
BISTRITA-NASAUD	2351	100,0	112	4,8	2214	94,2	41	1,7	25	1,1
BOTOSANI	1337	100,0	155	11,6	1148	85,9	35	2,6	34	2,5
BRASOV	5563	100,0	312	5,6	5207	93,6	16	0,3	44	0,8
BRAILA	656	100,0	98	14,9	535	81,6	1	0,2	23	3,5
BUZAU	2959	100,0	198	6,7	2701	91,3	73	2,5	60	2,0
CARAS-SEVERIN	2517	100,0	149	5,9	2063	82,0	183	7,3	305	12,1
CALARASI	574	100,0	76	13,2	494	86,1	3	0,5	4	0,7
CLUJ	6788	100,0	454	6,7	6227	91,7	71	1,0	107	1,6
CONSTANTA	14918	100,0	416	2,8	9951	66,7	19	0,1	4551	30,5
COVASNA	1841	100,0	113	6,1	1718	93,3	3	0,2	10	0,5
DAMBOVITA	2123	100,0	190	8,9	1803	84,9	59	2,8	130	6,1
DOLJ	4204	100,0	291	6,9	3894	92,6	729	17,3	19	0,5
GALATI	5805	100,0	247	4,3	5399	93,0	98	1,7	159	2,7
GIURGIU	1006	100,0	81	8,1	920	91,5	4	0,4	5	0,5
GORJ	2915	100,0	95	3,3	2354	80,8	24	0,8	466	16,0
HARGHITA	2753	100,0	185	6,7	2540	92,3	118	4,3	28	1,0
HUNEDOARA	2431	100,0	195	8,0	2216	91,2	20	0,8	20	0,8
IALOMITA	1468	100,0	71	4,8	1375	93,7	3	0,2	22	1,5
IASI	5394	100,0	328	6,1	5032	93,3	37	0,7	34	0,6
MARAMURES	4441	100,0	304	6,8	4066	91,6	361	8,1	71	1,6
MEHEDINTI	2106	100,0	112	5,3	1596	75,8	333	15,8	398	18,9
MURES	3361	100,0	283	8,4	3010	89,6	47	1,4	68	2,0
NEAMT	3645	100,0	187	5,1	3418	93,8	191	5,2	40	1,1
OLT	1184	100,0	90	7,6	1037	87,6	3	0,3	57	4,8
PRAHOVA	4872	100,0	320	6,6	4049	83,1	336	6,9	503	10,3
SALAJ	1828	100,0	109	6,0	1688	92,3	4	0,2	31	1,7
SATU MARE	2860	100,0	180	6,3	2662	93,1	9	0,3	18	0,6
SIBIU	2212	100,0	174	7,9	1396	63,1	92	4,2	642	29,0
SUCEAVA	3440	100,0	267	7,8	2902	84,4	42	1,2	271	7,9
TELEORMAN	1630	100,0	122	7,5	1488	91,3	26	1,6	20	1,2
TIMIS	10366	100,0	324	3,1	6646	64,1	28	0,3	3396	32,8
TULCEA	1499	100,0	130	8,7	1353	90,3	40	2,7	16	1,1
VASLUI	2147	100,0	123	5,7	1960	91,3	9	0,4	64	3,0
VALCEA	2352	100,0	121	5,1	2208	93,9	5	0,2	23	1,0
VRANCEA	1787	100,0	101	5,7	1657	92,7	66	3,7	29	1,6
MUN. BUCURESTI	40469	100,0	1796	4,4	33024	81,6	1589	3,9	5649	14,0
ILFOV	2125	100,0	221	10,4	1564	73,6	14	0,7	340	16,0

\*) by effect of implementation of Law no. 314/2001, art.1 and art. 6

\*\*\* Less than 0,01%

Table no. 8

**The number of incorporations in the Trade Register,  
by counties and sources of capital,  
in May 2006**

County	Total		out of which:					Rnking by: *	
			Private capital			State majority capital			Mixed capital (state+priva)
			out of which:			out of which:			
			PF+AF	Companies	OC	RA	Companie s		Companie s
No.	%	No.	No.	No.	No.	No.	No.		
0	1	2	3	4	5	6	7	8	9
<b>Total ROMÂNIA</b>	<b>10051</b>	<b>100,0</b>	<b>3602</b>	<b>6444</b>		<b>3</b>		<b>2</b>	<b>X</b>
ALBA	173	1,7	78	95					25
ARAD	322	3,2	136	186					7
ARGES	246	2,4	80	166					16
BACAU	252	2,5	117	135					14
BIHOR	328	3,3	153	175					4
BISTRITA-NASAUD	112	1,1	52	60					33
BOTOSANI	155	1,5	97	58					26
BRASOV	312	3,1	107	203		1		1	9
BRAILA	98	1,0	29	69					37
BUZAU	198	2,0	86	112					18
CARAS-SEVERIN	149	1,5	73	76					27
CALARASI	76	0,8	25	51					41
CLUJ	454	4,5	172	282					2
CONSTANTA	416	4,1	94	322					3
COVASNA	113	1,1	73	40					32
DAMBOVITA	190	1,9	104	86					20
DOLJ	291	2,9	128	163					11
GALATI	247	2,5	91	156					15
GIURGIU	81	0,8	39	41		1			40
GORJ	95	0,9	31	64					38
HARGHITA	185	1,8	97	88					22
HUNEDOARA	195	1,9	63	132					19
IALOMITA	71	0,7	32	39					42
IASI	328	3,3	128	200					5
MARAMURES	304	3,0	135	169					10
MEHEDINTI	112	1,1	58	54					34
MURES	283	2,8	119	164					12
NEAMT	187	1,9	78	109					21
OLT	90	0,9	33	57					39
PRAHOVA	320	3,2	143	177					8
SALAJ	109	1,1	47	61				1	35
SATU MARE	180	1,8	93	87					23
SIBIU	174	1,7	54	120					24
SUCEAVA	267	2,7	141	126					13
TELEORMAN	122	1,2	60	62					30
TIMIS	324	3,2	87	236		1			6
TULCEA	130	1,3	79	51					28
VASLUI	123	1,2	63	60					29
VALCEA	121	1,2	51	70					31
VRANCEA	101	1,0	35	66					36
MUN. BUCURESTI	1796	17,9	206	1590					1
ILFOV	221	2,2	35	186					17

\*) The total number of incorporations (col 1)

\*\*\* Less than 0,01%

Table no.9

**The number of incorporations in the Trade Register,  
by counties and category  
in May 2006**

County	Total		out of which:						RA	OC
			PF+AF	companies: 6446						
	No.	%		No.	SNC	SCS	SRL	SA	No.	No.
			No.		No.	No.	No.			
0	1	2	3	4	5	6	7	8	9	
<b>Total ROMÂNIA</b>	<b>10051</b>	<b>100,0</b>	<b>3602</b>			<b>6397</b>	<b>49</b>	<b>3</b>		
ALBA	173	1,7	78			94	1			
ARAD	322	3,2	136			184	2			
ARGES	246	2,4	80			164	2			
BACAU	252	2,5	117			134	1			
BIHOR	328	3,3	153			175				
BISTRITA-NASAUD	112	1,1	52			60				
BOTOSANI	155	1,5	97			57	1			
BRASOV	312	3,1	107			203	1	1		
BRAILA	98	1,0	29			68	1			
BUZAU	198	2,0	86			110	2			
CARAS-SEVERIN	149	1,5	73			75	1			
CALARASI	76	0,8	25			51				
CLUJ	454	4,5	172			281	1			
CONSTANTA	416	4,1	94			320	2			
COVASNA	113	1,1	73			40				
DAMBOVITA	190	1,9	104			86				
DOLJ	291	2,9	128			162	1			
GALATI	247	2,5	91			156				
GIURGIU	81	0,8	39			40	1	1		
GORJ	95	0,9	31			64				
HARGHITA	185	1,8	97			88				
HUNEDOARA	195	1,9	63			131	1			
IALOMITA	71	0,7	32			39				
IASI	328	3,3	128			199	1			
MARAMURES	304	3,0	135			169				
MEHEDINTI	112	1,1	58			54				
MURES	283	2,8	119			163	1			
NEAMT	187	1,9	78			107	2			
OLT	90	0,9	33			57				
PRAHOVA	320	3,2	143			175	2			
SALAJ	109	1,1	47			61	1			
SATU MARE	180	1,8	93			87				
SIBIU	174	1,7	54			119	1			
SUCEAVA	267	2,7	141			126				
TELEORMAN	122	1,2	60			62				
TIMIS	324	3,2	87			236		1		
TULCEA	130	1,3	79			50	1			
VASLUI	123	1,2	63			60				
VALCEA	121	1,2	51			70				
VRANCEA	101	1,0	35			64	2			
MUN. BUCURESTI	1796	17,9	206			1573	17			
ILFOV	221	2,2	35			183	3			

Table no. 10

**The number of incorporations in the Trade Register, by field of activity\*  
and categories in May 2006**

CAEN segment	Field of activity	Total		out of which:						
				PF+AF	companies: 6446				RA	OC
					SNC	SCS	SRL	SA		
					No.	No.	No.	No.		
0	1	2	3	4	5	6	7	8	9	10
	<b>Total ROMÂNIA</b>	<b>10051</b>	<b>100,0</b>	<b>3602</b>			<b>6397</b>	<b>49</b>	<b>3</b>	
1	Agriculture, hunting and related service activities	891	8,9	611			278	1	1	
2	Forestry, logging and related service activities	41	0,4	10			29	1	1	
5	Fishing, fish farming and related service activities	74	0,7	50			24			
10	Mining of coal and lignite; extraction of peat									
11	Extraction of crude petroleum and natural gas; service activities incidental to oil and gas extraction, excluding surveying									
12	Mining of uranium and thorium ores									
13	Mining of metal ores									
14	Other mining and quarrying	7	0,1				7			
15	Manufacture of food products and beverages	152	1,5	67			83	2		
16	Manufacture of tobacco products									
17	Manufacture of textiles	30	0,3	8			21	1		
18	Manufacture of wearing apparel; dressing and dyeing of fur	60	0,6	16			44			
19	Tanning and dressing of leather; manufacture of luggage, handbags, saddlery, harness and footwear	17	0,2	1			16			
20	Manufacture of wood and of products of wood and cork, except furniture; manufacture of articles of straw and plaiting materials	101	1,0	52			49			
21	Manufacture of pulp, paper and paper products	15	0,1	3			12			
22	Publishing, printing and reproduction of recorded media	56	0,6	6			50			
23	Manufacture of coke, refined petroleum products and nuclear fuel	2	0,0				2			
24	Manufacture of chemicals and chemical products	10	0,1				10			
25	Manufacture of rubber and plastic products	31	0,3	3			28			
26	Manufacture of other non-metallic mineral products	66	0,7	27			39			
27	Manufacture of basic metals	6	0,1				5	1		
28	Manufacture of fabricated metal products, except machinery and equipment	131	1,3	60			71			
29	Manufacture of machinery and equipment n.e.c.	14	0,1	1			13			
30	Manufacture of office machinery and computers	1	0,0				1			
31	Manufacture of electrical machinery and apparatus n.e.c.	10	0,1				10			
32	Manufacture of radio, television and communication equipment and apparatus	3	0,0	1			2			
33	Manufacture of medical, precision and optical instruments, watches and clocks	26	0,3	1			24	1		
34	Manufacture of motor vehicles, trailers and semi- trailers	4	0,0				3	1		
35	Manufacture of other transport equipment	15	0,1	2			13			
36	Manufacture of furniture; manufacturing n.e.c.	91	0,9	36			55			
37	Recycling	41	0,4	6			35			
40	Electricity, gas, steam and hot water supply	7	0,1				7			
41	Collection, purification and distribution of water	1	0,0	1						
45	Construction	1277	12,7	448			825	4		

**Table no. 10**  
(continuance)

**The number of incorporations in the Trade Register, by field of activity\*  
and categories in May 2006**

CAEN segment	Field of activity	Total		out of which:						
				PF+AF	companies: 6446				RA	OC
					SNC	SCS	SRL	SA		
					No.	No.	No.	No.		
0	1	2	3	4	5	6	7	8	9	10
	<b>Total ROMÂNIA</b>	<b>10051</b>	<b>100,0</b>	<b>3602</b>			<b>6397</b>	<b>49</b>	<b>3</b>	
50	Sale, maintenance and repair of motor vehicles and motorcycles; retail sale of automotive fuel	288	2,9	75			212	1		
51	Wholesale trade and commission trade, except of motor vehicles and motorcycles	954	9,5	220			733	1		
52	Retail trade, except of motor vehicles and motorcycles; repair of personal and household goods	1934	19,2	864			1069	1		
55	Hotels and restaurants	452	4,5	113			339			
60	Land transport; transport via pipelines	488	4,9	182			305	1		
61	Water transport	5	0,0	1			4			
62	Air transport									
63	Supporting and auxiliary transport activities; activities of travel agencies	59	0,6	7			51	1		
64	Post and telecommunications	83	0,8	15			67	1		
65	Financial intermediation, except insurance and pension funding	50	0,5				29	21		
66	Insurance and pension funding, except compulsory social security	2	0,0					2		
67	Activities auxiliary to financial intermediation	55	0,5				54	1		
70	Real estate activities	392	3,9	9			380	3		
71	Renting of machinery and equipment without operator and of personal and household goods	29	0,3	4			25			
72	Computer and related activities	266	2,6	112			154			
73	Research and development	4	0,0	1			3			
74	Other business activities	1170	11,6	295			873	2		
75	Public administration and defence; compulsory social security									
80	Education	43	0,4	16			27			
85	Health and social work	93	0,9	4			89			
90	Sewage and refuse disposal, sanitation and similar activities	6	0,1	1			5			
91	Activities of membership organizations n.e.c.									
92	Recreational, cultural and sporting activities	266	2,6	142			121	2	1	
93	Other service activities	220	2,2	121			99			
95	Activities of households as employers of domestic staff	11	0,1	9			2			
96	Extra-territorial organizations and bodies	1	0,0	1						

\*)Field of activity declared when registered, according to CAEN classification

Table no. 11

**Number of companies registered and the amount  
of subscribed capital, by county in May 2006**

County	Total registered companies		Subscribed capital		Average subscribed capital on company
	No.	%	mii RON	%	mii RON
0	1	2	3	4	5
<b>Total ROMÂNIA</b>	<b>6446</b>	<b>100,0</b>	<b>297345,8</b>	<b>100,0</b>	<b>46,4</b>
ALBA	95	1,5	136,6	0,0	1,5
ARAD	186	2,9	2647,2	0,9	14,3
ARGES	166	2,6	121592,2	40,9	732,5
BACAU	135	2,1	88,3	0,0	0,7
BIHOR	175	2,7	213,2	0,1	1,2
BISTRITA-NASAUD	60	0,9	57,5	0,0	1,0
BOTOSANI	58	0,9	969,1	0,3	16,7
BRASOV	204	3,2	1089,5	0,4	5,4
BRAILA	69	1,1	102,2	0,0	1,5
BUZAU	112	1,7	298,1	0,1	2,7
CARAS-SEVERIN	76	1,2	201,4	0,1	2,7
CALARASI	51	0,8	99,1	0,0	1,9
CLUJ	282	4,4	5134,0	1,7	18,3
CONSTANTA	322	5,0	600,9	0,2	1,9
COVASNA	40	0,6	31,7	0,0	0,8
DAMBOVITA	86	1,3	2049,7	0,7	23,8
DOLJ	163	2,5	72,7	0,0	0,5
GALATI	156	2,4	259,2	0,1	1,7
GIURGIU	41	0,6	1452,5	0,5	36,3
GORJ	64	1,0	17,7	***	0,3
HARGHITA	88	1,4	149,4	0,1	1,7
HUNEDOARA	132	2,0	343,4	0,1	2,6
IALOMITA	39	0,6	23,7	***	0,6
IASI	200	3,1	213,8	0,1	1,1
MARAMURES	169	2,6	82,8	0,0	0,5
MEHEDINTI	54	0,8	13,1	***	0,2
MURES	164	2,5	261,5	0,1	1,6
NEAMT	109	1,7	130,9	0,0	1,2
OLT	57	0,9	72,5	0,0	1,3
PRAHOVA	177	2,7	561,4	0,2	3,2
SALAJ	62	1,0	79625,4	26,8	1284,3
SATU MARE	87	1,3	115,4	0,0	1,3
SIBIU	120	1,9	1222,8	0,4	10,3
SUCEAVA	126	2,0	597,4	0,2	4,7
TELEORMAN	62	1,0	126,5	0,0	2,1
TIMIS	236	3,7	3208,7	1,1	13,6
TULCEA	51	0,8	230,2	0,1	4,5
VASLUI	60	0,9	57,0	0,0	0,9
VALCEA	70	1,1	39,9	0,0	0,6
VRANCEA	66	1,0	231,6	0,1	3,6
MUN. BUCURESTI	1590	24,7	30044,9	10,1	19,0
ILFOV	186	2,9	42880,5	14,4	231,8

*Note: The average does not include filials because according to the Law no.31/1990 they are not juridical persons*

\*\*\* Less than 0,01%

Table no. 12

**Number of registered companies and the amount  
of subscribed capital by category,  
in May 2006**

Company type	Total registered companies		Subscribed capital		Average subscribed capital on company
	No.	%	mii RON	%	mil. RON
0	1	2	3	4	5
<b>Total ROMÂNIA</b>	<b>6446</b>	<b>100,0</b>	<b>297345,8</b>	<b>100,0</b>	<b>46,4</b>
<b>SNC</b>					
<b>SCS</b>					
<b>SA</b>	49	0,8	121379,2	40,8	5517,2
<b>SRL</b>	6397	99,2	175966,6	59,2	27,5
<b>SCA</b>					

*Note: The average does not include filials because according to the Law no.31/1990 they are not juridical persons*

\*\*\* Less than 0,01%

Diagram no.5

