



MINISTRY OF JUSTICE

THE NATIONAL TRADE REGISTER OFFICE

București, Bd. Unirii nr. 74, Bl. J3b, tronson II+III, sector 3; Telefon: +40 21 316.08.04, 316.08.10; Fax: +40 21 316.08.03 Cod poștal: 030837
Website: www.onrc.ro; E-mail: onrc@onrc.ro; Cod de identificare Fiscală: 14942091; înregistrat ca operator date personale sub nr.1350

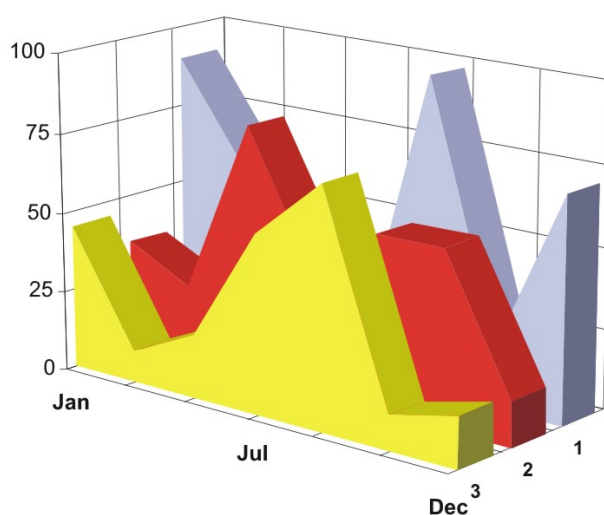
PROCEEDINGS IN THE CENTRAL TRADE REGISTER

STATISTICAL SYNTHESIS

OF

RECORDS IN THE CENTRAL TRADE REGISTER

- the 30th of April 2006 - provisional data -



- ISSUE No. 173 -

MINISTRY OF JUSTICE
THE NATIONAL TRADE REGISTER OFFICE

- Operations of incorporation of companies, changes in statutory documents and strike-off of companies are based on Law No.26/1990 reissued, Law No.31/1990, reissued, OUG No.76/2001, reissued and Methodology Norms No. P/608/1998.

- This paper presents the trend in operations registered in The Trade Register Office attached to the law court of Bucharest and in the Trade Register Offices attached to the law court in each county of Romania.

- Information recorded in the Central Trade Register concern operations compulsory by law to be registered in the trade registers within the 42 trade register offices attached to the law courts.

• No part of the content of this publication, in original or in any modified format, may be reproduced, stored in a retrieval system, or transmitted, in any form or by any means, without the prior permission in writing of The Ministry of Justice – The National Trade Register Office.

• The content of this publication may be referred to in articles, studies, books, as supporting or explanatory data under the condition only, the source of the information to be clearly and precisely specified.

Contents

	Page
1 Explanatory Note	1
2.1 Data for December 1990 – April 2006	3
Table no.1 – Operations registered in the Trade Register, by categories during the period of December 1990 – April 2006, in total by country and counties, rate of categories of operations in total operations country	3
Table no.1.a – Operations registered in the Trade Register, by categories during the period of December 1990 – April 2006, in total by country and counties, counties' rate in total country	4
Table no. 3 – Number and structure of incorporations in the Trade Register, by years, during the period of December 1990- April 2006	5
Table no.4 – The number of incorporations in the Trade Register, by counties and sources of capital, in the period December 1990 - April 2006	6
Table no. 5 – The number of incorporations in the Trade Register, by counties and categories, during the period of December 1990 – April 2006	7
Table no. 6 – The number of incorporations in the Trade Register, by field of activity and categories, during the period of December 1990 - April 2006	8
2.2 Data for April 2006	10
Table no. 7 – Operations carried on with the Trade Registers, by counties and categories, in April 2006	10
Table no. 8 – The number of incorporations in the Trade Register, by counties and sources of capital, in April 2006	11
Table no. 9 – The number of incorporations in the Trade Register, by counties and category in April 2006	12
Table no. 10 –The number of incorporations in the Trade Register, by field of activity and categories in April 2006	13
Table no. 11 – Number of companies registered and the amount of subscribed capital, by county in April 2006	15
Table no. 12– Number of registered companies and the amount of subscribed capital by category, in April 2006	16
Diagram no. 5 – Average subscribed capital on company in April 2006	16

Explanatory Note

The Trade Register Office is set-up by Law No. 26/1990, reissued and modified by OUG No. 129/2002, became an active institution since December 1990 and is structured in two levels:

- the national level, represented by the National Trade Register Office organised under the Ministry of Justice
- the local level, represented by the 42 trade register offices attached to the law courts and co-ordinated by the National Trade Register Office

The categories of businessmen compulsory to register in the trade register are:

- natural persons tradesmen and family associations doing usually commercial acts, commercial companies, national companies, companies under state supervision, and co-operative organisations
- subsidiaries registered as commercial companies and legal persons following the legal proceedings of set-up, activity and incorporation according to the type of the legally set-up company.

Usual Terms:

- incorporation – represents the registration of the company in the trade registry awarding the quality of legal person.

- other statutory documents – represent the official registration of the changes occurred in a company's life, such as: changes in headquarters' address, increase or decrease of the issued capital, merger, liquidation, strike-off, etc.

- strike-off – represents the removal of a company from the trade registry, due to dissolution and liquidation, being also the very moment the company loses its quality of legal person. Data also include the companies under the provisions of Law No. 314/2001.

- change of certificate – represents the obligation of companies set-up before OGU No. 76/2001 republished came in force, to request the incorporation certificate and fiscal registration certificate to be replaced with the new registration certificate containing the given unique registration code.

The ratio of these changes is being calculated as a proportion between the effective number of changes and the number of active companies due to operate the change.

- active company from the legal point of view – a company registered in the trade register and which is not affected by any of the situations leading to the temporary or permanent loss of this status (e.g. dissolution, liquidation, strike-off)

- operations represent all the records in the trade registry including incorporations, other statutory documents and strike-off of companies, irrespective of the object of activity, company's type and origin of the subscribed capital (local or foreign investment).

• **Terms used in tables and charts**

➤ **Number of companies:** represents, depending on the specific table, the number of companies incorporated in the related period, the number of companies being struck-off from the trade registry.

➤ **Amount of the subscribed capital:**

- **total, in local currency:** the amount of the subscribed capital resulted from totalising the amount subscribed (in cash and in kind) in local currency (ROL)

➤ **Regional development:**

North-East: Suceava, Botoșani, Neamț, Iași, Bacău, Vaslui.

South-East: Vrancea, Galați, Buzău, Brăila, Tulcea, Constanța.

South-Muntenia: Argeș, Dâmbovița, Prahova, Teleorman, Giurgiu, Călărași, Ialomița.

South-West Oltenia: Gorj, Vâlcea, Dolj, Mehedinți, Olt.

West: Arad, Caraș-Severin, Hunedoara, Timiș.

North-West: Bihor, Bistrița, Cluj, Satu Mare, Sălaj, Maramureș.

Center: Alba, Brașov, Covasna, Harghita, Mureș, Sibiu.

Bucharest-Ilfov: București, Ilfov.

CAEN code – The Classification of Activities in the National Economy was approved by HG No. 656/1997, modified by Order No 601 of the President of National Institute of Statistics being compatible with the international classification used in statistic reports and official documents. Activities are ranked upon homogeneity principle by sections, divisions, groups and classes.

Common abbreviations

- **PF** - Natural Persons Tradesman
- **AF** - Family association
- **SNC** - General Partnership
- **SCS** - Limited Partnership
- **SA** - Joint stock company
- **SRL** - Limited liability company
- **RA** - Company Under State Supervision
- **OC** - Co-operative organisation

Source:

The integrated IT system of the trade registry is designed by The National Trade Registry Office according to the provisions of the related legislation in force. The source of information is the computerised system of the trade registers handled by the Trade Register Offices attached to the law courts.

Table no. 1

**Operations registered in the Trade Register, by categories
during the period of December 1990 - April 2006 in total by country and counties,
- rate of categories of operations in total operations/country -**

Counties	Total of registered operations		out of which :									
			Registered companies		Changes in statutory documents		out of which :				Strike off companies	
	of liquidation, dissolution						out of which :					
	No.	%	No.	%	No.	%	No.	%	No.	%	No.	%
0	1	2	3	4	5	6	7	8	9	10	11	12
Total ROMÂNIA	6723690	100,0	1467401	100,0	4891523	100,0	9911	100,0	165855	100,0	364766	100,0
ALBA	93553	1,4	22782	1,6	67272	1,4	371	3,7	3596	2,2	3499	1,0
ARAD	150050	2,2	35549	2,4	106813	2,2	369	3,7	2974	1,8	7688	2,1
ARGES	161243	2,4	37879	2,6	116317	2,4	197	2,0	4219	2,5	7047	1,9
BACAU	157223	2,3	37420	2,6	113020	2,3	1003	10,1	5280	3,2	6783	1,9
BIHOR	202515	3,0	43151	2,9	150840	3,1	303	3,1	4598	2,8	8524	2,3
BISTRITA-NASAUD	86132	1,3	18032	1,2	62821	1,3	72	0,7	1120	0,7	5279	1,4
BOTOSANI	62400	0,9	18250	1,2	41443	0,8	66	0,7	1563	0,9	2707	0,7
BRASOV	225570	3,4	45422	3,1	170286	3,5	149	1,5	4892	2,9	9862	2,7
BRAILA	86408	1,3	20705	1,4	63299	1,3	61	0,6	2540	1,5	2404	0,7
BUZAU	130418	1,9	27243	1,9	93989	1,9	146	1,5	2109	1,3	9186	2,5
CARAS-SEVERIN	89225	1,3	18071	1,2	63881	1,3	41	0,4	1922	1,2	7273	2,0
CALARASI	58258	0,9	15008	1,0	40884	0,8	79	0,8			2366	0,6
CLUJ	288843	4,3	66585	4,5	218019	4,5	197	2,0			4239	1,2
CONSTANTA	284728	4,2	62037	4,2	205152	4,2	926	9,3	10621	6,4	17539	4,8
COVASNA	64320	1,0	12573	0,9	47884	1,0	18	0,2	1175	0,7	3863	1,1
DAMBOVITA	107444	1,6	27536	1,9	68083	1,4	98	1,0	2951	1,8	11825	3,2
DOLJ	176915	2,6	39146	2,7	126769	2,6	215	2,2	5633	3,4	11000	3,0
GALATI	194253	2,9	35077	2,4	146839	3,0	125	1,3	5370	3,2	12337	3,4
GIURGIU	45356	0,7	11837	0,8	30257	0,6	47	0,5			3262	0,9
GORJ	89595	1,3	17753	1,2	67808	1,4	48	0,5	2667	1,6	4034	1,1
HARGHITA	98095	1,5	21859	1,5	72870	1,5	51	0,5			3366	0,9
HUNEDOARA	126405	1,9	30473	2,1	86779	1,8	126	1,3	2944	1,8	9153	2,5
IALOMITA	66213	1,0	13979	1,0	47411	1,0	78	0,8	1586	1,0	4823	1,3
IASI	231719	3,4	44550	3,0	176919	3,6	597	6,0	4224	2,5	10250	2,8
MARAMURES	133959	2,0	37961	2,6	89785	1,8	159	1,6	2924	1,8	6213	1,7
MEHEDINTI	71872	1,1	16951	1,2	47995	1,0	55	0,6	3085	1,9	6926	1,9
MURES	159927	2,4	37000	2,5	117100	2,4	83	0,8	2942	1,8	5827	1,6
NEAMT	140909	2,1	32904	2,2	98188	2,0	304	3,1	2435	1,5	9817	2,7
OLT	95074	1,4	21376	1,5	65382	1,3	21	0,2	2033	1,2	8316	2,3
PRAHOVA	240795	3,6	48261	3,3	180837	3,7	274	2,8	3934	2,4	11697	3,2
SALAJ	54876	0,8	13973	1,0	37186	0,8	29	0,3	683	0,4	3717	1,0
SATU MARE	106754	1,6	24523	1,7	74882	1,5	26	0,3	2934	1,8	7349	2,0
SIBIU	143950	2,1	28088	1,9	111285	2,3	31	0,3	2583	1,6	4577	1,3
SUCEAVA	165485	2,5	37664	2,6	115171	2,4	29	0,3	2387	1,4	12650	3,5
TELEORMAN	75906	1,1	16838	1,1	57077	1,2	49	0,5	1504	0,9	1991	0,5
TIMIS	254838	3,8	50306	3,4	193975	4,0	271	2,7	7273	4,4	10557	2,9
TULCEA	67027	1,0	15331	1,0	48987	1,0	149	1,5	1002	0,6	2709	0,7
VASLUI	80824	1,2	19146	1,3	54278	1,1	197	2,0	1385	0,8	7400	2,0
VALCEA	112121	1,7	24693	1,7	80130	1,6	138	1,4	1888	1,1	7298	2,0
VRANCEA	87322	1,3	18370	1,3	65549	1,3	51	0,5	1594	1,0	3403	0,9
MUN. BUCURESTI	1369375	20,4	279076	19,0	1009747	20,6	2641	26,6	51406	31,0	80552	22,1
ILFOV	85795	1,3	22023	1,5	58314	1,2	21	0,2	1879	1,1	5458	1,5

*) according to the effect of Law No. 314/2001, art.1 și art. 6

*** Less than 0,01%

Table no. 2

**Operations registered in the Trade Register, by categories
during the period of December 1990 - April 2006, in total by country and counties,
- rate of categories of operations in total operations/country -**

Counties	Total of registered operations		out of which :									
			Registered companies		Changes in statutory documents		out of which :				Strike off companies	
	of liquidation, dissolution						out of which :					
	No.	%	No.	%	No.	%	No.	%	No.	%	No.	%
0	1	2	3	4	5	6	7	8	9	10	11	12
Total ROMÂNIA	6723690	100,0	1467401	21,8	4891523	72,8	9911	0,1	165855	2,5	364766	5,4
ALBA	93553	100,0	22782	24,4	67272	71,9	371	0,4	3596	3,8	3499	3,7
ARAD	150050	100,0	35549	23,7	106813	71,2	369	0,2	2974	2,0	7688	5,1
ARGES	161243	100,0	37879	23,5	116317	72,1	197	0,1	4219	2,6	7047	4,4
BACAU	157223	100,0	37420	23,8	113020	71,9	1003	0,6	5280	3,4	6783	4,3
BIHOR	202515	100,0	43151	21,3	150840	74,5	303	0,1	4598	2,3	8524	4,2
BISTRITA-NASAUD	86132	100,0	18032	20,9	62821	72,9	72	0,1	1120	1,3	5279	6,1
BOTOSANI	62400	100,0	18250	29,2	41443	66,4	66	0,1	1563	2,5	2707	4,3
BRASOV	225570	100,0	45422	20,1	170286	75,5	149	0,1	4892	2,2	9862	4,4
BRAILA	86408	100,0	20705	24,0	63299	73,3	61	0,1	2540	2,9	2404	2,8
BUZAU	130418	100,0	27243	20,9	93989	72,1	146	0,1	2109	1,6	9186	7,0
CARAS-SEVERIN	89225	100,0	18071	20,3	63881	71,6	41	0,0	1922	2,2	7273	8,2
CALARASI	58258	100,0	15008	25,8	40884	70,2	79	0,1			2366	4,1
CLUJ	288843	100,0	66585	23,1	218019	75,5	197	0,1			4239	1,5
CONSTANTA	284728	100,0	62037	21,8	205152	72,1	926	0,3	10621	3,7	17539	6,2
COVASNA	64320	100,0	12573	19,5	47884	74,4	18	0,0	1175	1,8	3863	6,0
DAMBOVITA	107444	100,0	27536	25,6	68083	63,4	98	0,1	2951	2,7	11825	11,0
DOLJ	176915	100,0	39146	22,1	126769	71,7	215	0,1	5633	3,2	11000	6,2
GALATI	194253	100,0	35077	18,1	146839	75,6	125	0,1	5370	2,8	12337	6,4
GIURGIU	45356	100,0	11837	26,1	30257	66,7	47	0,1			3262	7,2
GORJ	89595	100,0	17753	19,8	67808	75,7	48	0,1	2667	3,0	4034	4,5
HARGHITA	98095	100,0	21859	22,3	72870	74,3	51	0,1			3366	3,4
HUNEDOARA	126405	100,0	30473	24,1	86779	68,7	126	0,1	2944	2,3	9153	7,2
IALOMITA	66213	100,0	13979	21,1	47411	71,6	78	0,1	1586	2,4	4823	7,3
IASI	231719	100,0	44550	19,2	176919	76,4	597	0,3	4224	1,8	10250	4,4
MARAMURES	133959	100,0	37961	28,3	89785	67,0	159	0,1	2924	2,2	6213	4,6
MEHEDINTI	71872	100,0	16951	23,6	47995	66,8	55	0,1	3085	4,3	6926	9,6
MURES	159927	100,0	37000	23,1	117100	73,2	83	0,1	2942	1,8	5827	3,6
NEAMT	140909	100,0	32904	23,4	98188	69,7	304	0,2	2435	1,7	9817	7,0
OLT	95074	100,0	21376	22,5	65382	68,8	21	0,0	2033	2,1	8316	8,7
PRAHOVA	240795	100,0	48261	20,0	180837	75,1	274	0,1	3934	1,6	11697	4,9
SALAJ	54876	100,0	13973	25,5	37186	67,8	29	0,1	683	1,2	3717	6,8
SATU MARE	106754	100,0	24523	23,0	74882	70,1	26	0,0	2934	2,7	7349	6,9
SIBIU	143950	100,0	28088	19,5	111285	77,3	31	0,0	2583	1,8	4577	3,2
SUCEAVA	165485	100,0	37664	22,8	115171	69,6	29	0,0	2387	1,4	12650	7,6
TELEORMAN	75906	100,0	16838	22,2	57077	75,2	49	0,1	1504	2,0	1991	2,6
TIMIS	254838	100,0	50306	19,7	193975	76,1	271	0,1	7273	2,9	10557	4,1
TULCEA	67027	100,0	15331	22,9	48987	73,1	149	0,2	1002	1,5	2709	4,0
VASLUI	80824	100,0	19146	23,7	54278	67,2	197	0,2	1385	1,7	7400	9,2
VALCEA	112121	100,0	24693	22,0	80130	71,5	138	0,1	1888	1,7	7298	6,5
VRANCEA	87322	100,0	18370	21,0	65549	75,1	51	0,1	1594	1,8	3403	3,9
MUN. BUCURESTI	1369375	100,0	279076	20,4	1009747	73,7	2641	0,2	51406	3,8	80552	5,9
ILFOV	85795	100,0	22023	25,7	58314	68,0	21	0,0	1879	2,2	5458	6,4

*) according to the effect of Law No. 314/2001, art.1 și art. 6

*** Less than 0,01%

Table no.3

**Number and structure of incorporations in the Trade Register, by years,
during the period of December 1990 - April 2006**

Period (year, month)	Registered companies		Percentage	
	No.	%	%	
0	1	2	3	
Total, 31 February 2006, out of which	1467401	100,00		
Year 1990	81	0,01		
Year 1991	95840	6,53		
Year 1992	137456	9,37		
Year 1993	117078	7,98		
Year 1994	137445	9,37		
Year 1995	65479	4,46		
Year 1996	62089	4,23		
Year 1997	55663	3,79		
Year 1998	63878	4,35		
Year 1999	57197	3,90		
Year 2000	57291	3,90		
Year 2001	61265	4,18		
Year 2002	84780	5,78		
Year 2003	123582	8,42		
Year 2004	144284	9,83		
Year 2005	157375	10,72		
Year 2006 (I - XII) out of which :	46618			130,9
January	8797			18,9
February	12605			27,0
March	14410			30,9
April	10806			30,9

Note: Column 2 reveals the annual structure of incorporations; column 3 reveals the structure by months during the current year.

*** Less than 0,01%
Diagram no.1

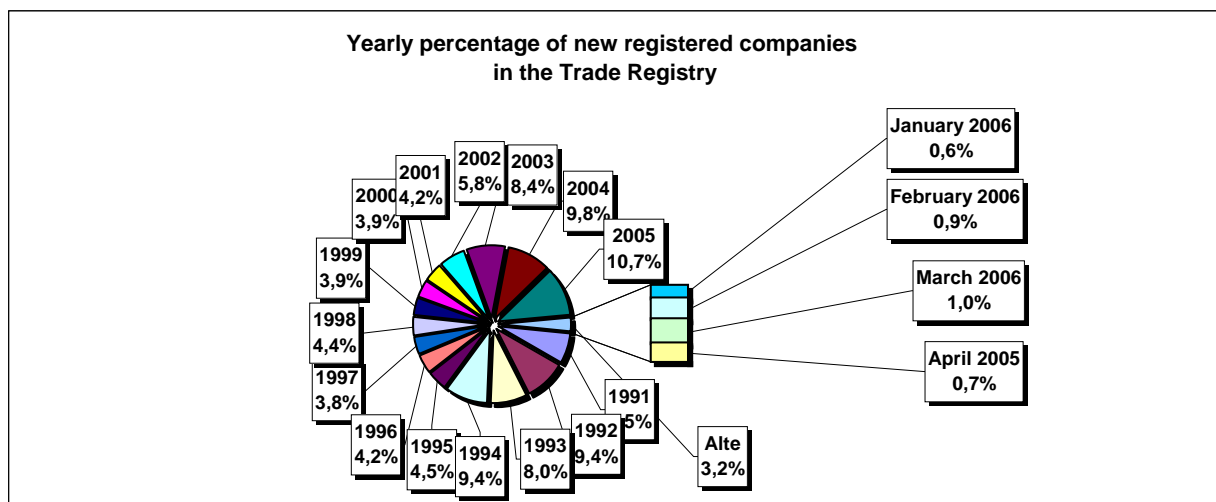


Table no. 4

The number of incorporations in the Trade Register, by counties and sources of capital, in the period December 1990 - April 2006

Counties	Total		out of which:					Ranking by: *	
			Private capital			State majority capital			Mixed capital (state+private)
			out of which:			out of which:			
			PF+AF	Companies	OC	RA	Companies		Companies
No.	%	No.	No.	No.	No.	No.	No.		
0	1	2	3	4	5	6	7	8	9
Total ROMÂNIA	1467401	100,0	373628	1076132	5391	1328	2360	8562	X
ALBA	22782	1,6	7817	14572	141	35	47	170	24
ARAD	35550	2,4	13696	21298	157	26	40	333	15
ARGES	37879	2,6	12364	25137	168	29	29	152	11
BACAU	37420	2,6	12497	24465	158	35	42	223	13
BIHOR	43151	2,9	9004	33595	146	37	62	307	8
BISTRITA-NASAUD	18032	1,2	6464	11313	98	19	29	109	33
BOTOSANI	18250	1,2	8207	9609	122	21	172	119	31
BRASOV	45422	3,1	9120	35891	114	41	87	169	6
BRAILA	20705	1,4	5148	15225	96	28	43	165	28
BUZAU	27243	1,9	7871	19031	142	26	42	131	21
CARAS-SEVERIN	18071	1,2	6314	11420	102	33	65	137	32
CALARASI	15008	1,0	4378	10354	86	18	77	95	38
CLUJ	66585	4,5	16459	49623	150	52	40	261	2
CONSTANTA	62037	4,2	11781	49413	203	51	49	540	3
COVASNA	12573	0,9	4148	8193	67	24	32	109	41
DAMBOVITA	27536	1,9	12777	14368	134	29	75	153	20
DOLJ	39146	2,7	7637	31048	162	40	57	202	9
GALATI	35077	2,4	6702	28016	135	30	51	143	16
GIURGIU	11837	0,8	2777	8740	80	21	109	110	42
GORJ	17753	1,2	4073	13263	184	50	83	100	34
HARGHITA	21859	1,5	8357	13122	85	23	43	229	26
HUNEDOARA	30473	2,1	8018	21963	81	37	92	282	18
IALOMITA	13979	1,0	5408	8345	74	15	46	91	39
IASI	44550	3,0	12069	31869	164	34	70	344	7
MARAMURES	37961	2,6	15605	22035	122	37	39	123	10
MEHEDINTI	16951	1,2	5283	11443	82	19	26	98	35
MURES	37000	2,5	13690	22924	155	30	34	167	14
NEAMT	32904	2,2	12148	20371	161	29	30	165	17
OLT	21376	1,5	8566	12436	161	26	64	123	27
PRAHOVA	48261	3,3	14579	33116	177	50	68	271	5
SALAJ	13973	1,0	5455	8302	107	19	28	62	40
SATU MARE	24523	1,7	7811	16429	88	19	42	134	23
SIBIU	28088	1,9	6721	20951	118	32	108	158	19
SUCEAVA	37664	2,6	18086	19062	202	30	64	220	12
TELEORMAN	16838	1,1	5776	10663	152	21	44	182	36
TIMIS	50306	3,4	7745	41971	140	37	68	345	4
TULCEA	15331	1,0	5104	9889	66	18	42	212	37
VASLUI	19146	1,3	9416	9429	109	16	41	135	29
VALCEA	24693	1,7	9774	14561	168	40	37	113	22
VRANCEA	18370	1,3	5576	12533	104	16	27	114	30
MUN. BUCURESTI	279075	19,0	16430	261184	138	115	103	1105	1
ILFOV	22023	1,5	2777	18960	92	20	13	161	25

*) The total number of incorporations (col 1)

*** Less than 0,01%

Table no. 5

**The number of incorporations in the Trade Register,
by counties and categories, during the period of
December 1990 - April 2006**

County	Total		out of which:						
			PF+AF	companies: 1087054				RA	OC
	SNC	SCS		SRL	SA	No.	No.		
	No.	%	No.	No.	No.			No.	No.
0	1	2	3	4	5	6	7	8	9
Total ROMÂNIA	1467401	100,0	373628	32643	1561	1021648	31196	1328	5391
ALBA	22782	1,6	7817	888	11	13350	540	35	141
ARAD	35549	2,4	13696	53	10	20955	651	26	157
ARGES	37879	2,6	12364	107	14	24404	793	29	168
BACAU	37420	2,6	12497	1299	4	22721	705	35	158
BIHOR	43151	2,9	9004	125	47	32915	877	37	146
BISTRITA-NASAUD	18032	1,2	6464	146	21	10880	404	19	98
BOTOSANI	18250	1,2	8207	468	1	8989	442	21	122
BRASOV	45422	3,1	9120	239	20	35069	819	41	114
BRAILA	20705	1,4	5148	376	12	14543	502	28	96
BUZAU	27243	1,9	7871	3747	46	14863	548	26	142
CARAS-SEVERIN	18071	1,2	6314	117	8	11042	455	33	102
CALARASI	15008	1,0	4378	609	3	9571	343	18	86
CLUJ	66585	4,5	16459	2111	18	46599	1196	52	150
CONSTANTA	62037	4,2	11781	311	23	48232	1436	51	203
COVASNA	12573	0,9	4148	148	4	7889	293	24	67
DAMBOVITA	27536	1,9	12777	60	8	14051	477	29	134
DOLJ	39146	2,7	7637	1560	8	28895	844	40	162
GALATI	35077	2,4	6702	1574	6	25819	811	30	135
GIURGIU	11837	0,8	2777	35	8	8604	312	21	80
GORJ	17753	1,2	4073	29	1	12943	473	50	184
HARGHITA	21859	1,5	8357	62	6	12850	476	23	85
HUNEDOARA	30473	2,1	8018	1166	98	20420	653	37	81
IALOMITA	13979	1,0	5408	266	11	7870	335	15	74
IASI	44550	3,0	12069	506	111	30690	974	34	164
MARAMURES	37961	2,6	15605	1926	23	19673	574	37	122
MEHEDINTI	16951	1,2	5283	427	3	10817	320	19	82
MURES	37000	2,5	13690	37	34	22418	636	30	155
NEAMT	32904	2,2	12148	3293	30	16593	650	29	161
OLT	21376	1,5	8566	1611	1	10533	478	26	161
PRAHOVA	48261	3,3	14579	3122	14	29459	860	50	177
SALAJ	13973	1,0	5455	600	4	7511	277	19	107
SATU MARE	24523	1,7	7811	283	5	15862	455	19	88
SIBIU	28088	1,9	6721	775	48	19763	631	32	118
SUCEAVA	37664	2,6	18086	438	8	18331	569	30	202
TELEORMAN	16838	1,1	5776	272	399	9818	400	21	152
TIMIS	50306	3,4	7745	606	27	40538	1213	37	140
TULCEA	15331	1,0	5104	1363	114	8201	465	18	66
VASLUI	19146	1,3	9416	90	11	9110	394	16	109
VALCEA	24693	1,7	9774	363	6	13877	465	40	168
VRANCEA	18370	1,3	5576	356	10	11871	437	16	104
MUN. BUCURESTI	279076	19,0	16430	1030	295	254616	6451	115	138
ILFOV	22023	1,5	2777	49	30	18493	562	20	92

Table no. 6

**The number of incorporations in the Trade Register, by field of activity*
during the period of December 1990 - April 2006**

CAEN segment	Field of activity	Total		out of which:						RA	OC
				PF+AF	companies: 1087054						
		No.	%		No.	SNC	SCS	SRL	SA	No.	No.
				No.		No.	No.	No.			
0	1	2	3	4	5	6	7	8	9	10	
	Total ROMANIA	1467401	100,0	373628	32643	1561	1021648	31196	1328	5391	
1	Agriculture, hunting and related service activities	59050	4,0	13240	2024	44	39802	3772	51	117	
2	Forestry, logging and related service activities	7820	0,5	1005	152	3	6350	220	82	8	
5	Fishing, fish farming and related service activities	2640	0,2	1477	17	3	1090	53			
10	Mining of coal and lignite; extraction of peat	110	0,0	2			72	32	4		
11	Extraction of crude petroleum and natural gas; service activities incidental to oil and gas extraction, excluding surveying	319	0,0	3	1		147	122	46		
12	Mining of uranium and thorium ores	133	0,0	32			95	6			
13	Mining of metal ores	524	0,0	163			298	55	8		
14	Other mining and quarrying	1453	0,1	108	9	1	1165	167	2	1	
15	Manufacture of food products and beverages	72170	4,9	13873	3260	149	52793	1842	5	248	
16	Manufacture of tobacco products	285	0,0	47			206	31	1		
17	Manufacture of textiles	11441	0,8	2298	556	16	8021	405		145	
18	Manufacture of wearing apparel; dressing and dyeing of fur	20258	1,4	4570	875	38	14113	356	1	305	
19	Tanning and dressing of leather; manufacture of luggage, handbags, saddlery, harness and footwear	5105	0,3	882	112	6	3930	123	1	51	
20	Manufacture of wood and of products of wood and cork, except furniture; manufacture of articles of straw and plaiting materials	24061	1,6	8455	575	29	14455	496	9	42	
21	Manufacture of pulp, paper and paper products	1701	0,1	114	21	1	1455	97		13	
22	Publishing, printing and reproduction of recorded media	11304	0,8	908	317	21	9633	401	14	10	
23	Manufacture of coke, refined petroleum products and nuclear fuel	254	0,0	24			194	34	2		
24	Manufacture of chemicals and chemical products	3581	0,2	116	89	1	2987	376	6	6	
25	Manufacture of rubber and plastic products	5895	0,4	551	313	7	4743	256		24	
26	Manufacture of other non-metallic mineral products	8573	0,6	2604	212	6	5354	379	5	13	
27	Manufacture of basic metals	2390	0,2	166	39	3	1966	206	3	7	
28	Manufacture of fabricated metal products, except machinery and equipment	15873	1,1	3696	361	23	11001	719	11	62	
29	Manufacture of machinery and equipment n.e.c.	3670	0,3	100	44	7	3075	420	19	5	
30	Manufacture of office machinery and computers	1748	0,1	15	25	4	1624	80			
31	Manufacture of electrical machinery and apparatus n.e.c.	1853	0,1	105	44	6	1548	144		6	
32	Manufacture of radio, television and communication equipment and apparatus	835	0,1	55	14	4	688	73		1	
33	Manufacture of medical, precision and optical instruments, watches and clocks	2409	0,2	585	17	2	1702	99		4	
34	Manufacture of motor vehicles, trailers and semi-trailers	878	0,1	30	31	3	690	122		2	
35	Manufacture of other transport equipment	1803	0,1	265	86	7	1249	121	73	2	
36	Manufacture of furniture; manufacturing n.e.c.	14668	1,0	4181	284	16	9691	333	5	158	
37	Recycling	4586	0,3	408	51	5	3949	172		1	
40	Electricity, gas, steam and hot water supply	2837	0,2	834	3	1	1408	503	88		
41	Collection, purification and distribution of water	3528	0,2	1618	2		1646	189	73		
45	Construction	80551	5,5	21542	611	42	55829	2397	53	77	

*Field of activity declared when registered, according to CAEN classification

Table no. 6
(continuing)

**The number of incorporations in the Trade Register, by field of activity*
and categories, during the period of December 1990 - April 2006**

CAEN segment	Field of activity	Total		out of which:						
				PF+AF	companies:				RA	OC
					1087054					
					SNC	SCS	SRL	SA		
No.	%	No.	No.	No.	No.	No.	No.	No.	No.	
0	1	2	3	4	5	6	7	8	9	10
	Total ROMÂNIA	1467401	100,0	373628	32643	1561	1021648	31196	1328	5391
50	Sale, maintenance and repair of motor vehicles and motorcycles; retail sale of automotive fuel	51521	3,5	8022	1244		41151	1022	6	42
51	Wholesale trade and commission trade, except of motor vehicles and motorcycles	193580	13,2	16221	4523	150	169099	3270	35	282
52	Retail trade, except of motor vehicles and motorcycles; repair of personal and household goods	481983	32,8	170127	11914	557	294516	2483	5	2380
55	Hotels and restaurants	56385	3,8	13508	1635	126	40172	776	73	95
60	Land transport; transport via pipelines	75570	5,1	34131	844	37	39465	1050	33	10
61	Water transport	821	0,1	148	82	8	448	64	70	1
62	Air transport	289	0,0	17			217	45	10	
63	Supporting and auxiliary transport activities; activities of travel agencies	9683	0,7	610	220	14	8299	433	96	11
64	Post and telecommunications	6366	0,4	448	11	1	5601	291	11	3
65	Financial intermediation, except insurance and pension funding	5825	0,4	143	15		2503	2129	2	1033
66	Insurance and pension funding, except compulsory social security	1959	0,1	608	1		504	845		1
67	Activities auxiliary to financial intermediation	6200	0,4	1241	6	2	4664	279		8
70	Real estate activities	18438	1,3	672	28	9	17146	559	17	7
71	Renting of machinery and equipment without operator and of personal and household goods	3054	0,2	609	116	8	2157	93	70	1
72	Computer and related activities	20403	1,4	3438	119	13	16446	382	2	3
73	Research and development	1638	0,1	237	11	2	1173	170	43	2
74	Other business activities	97306	6,6	19830	789	73	74834	1613	106	60
75	Public administration and defence; compulsory social security	358	0,0	89	5		216	26	21	1
80	Education	6083	0,4	3107	62	5	2844	65		
85	Health and social work	15289	1,0	2080	233	15	12876	81	3	1
90	Sewage and refuse disposal, sanitation and similar activities	807	0,1	82	13	2	587	103	18	
91	Activities of membership organizations n.e.c.	210	0,0	92	1		99	15		3
92	Recreational, cultural and sporting activities	14639	1,0	3562	202	14	10489	291	69	12
93	Other service activities	23871	1,6	10040	418	42	12863	305	76	126
95	Activities of households as employers of domestic staff	744	0,1	444	6	1	289	3		1
96	Extra-territorial organizations and bodies	8	0,0	8						

*)Field of activity declared when registered, according to CAEN classification

Table no. 7

**Operations carried on with the Trade Registers,
by counties and categories,
in April 2006**

County	Total of operations carried on		out of which:							
			New incorporations		Changes in statutory documents		out of which: of liquidation, dissolution		Strike off companies	
	No.	%	No.	%	No.	%	No.	%	No.	%
0	1	2	3	4	5	6	7	8	9	10
Total ROMÂNIA	174791	100,0	10806	6,2	136106	77,9	3640	2,1	27879	15,9
ALBA	4767	100,0	190	4,0	3131	65,7	4	0,1	1446	30,3
ARAD	3863	100,0	343	8,9	2938	76,1	18	0,5	582	15,1
ARGES	3695	100,0	292	7,9	2589	70,1	85	2,3	814	22,0
BACAU	3446	100,0	246	7,1	3161	91,7	90	2,6	39	1,1
BIHOR	4694	100,0	359	7,6	3380	72,0	14	0,3	955	20,3
BISTRITA-NASAUD	2023	100,0	161	8,0	1821	90,0	114	5,6	41	2,0
BOTOSANI	1904	100,0	149	7,8	1721	90,4	331	17,4	34	1,8
BRASOV	4006	100,0	340	8,5	3575	89,2	12	0,3	91	2,3
BRAILA	2462	100,0	134	5,4	1490	60,5	4	0,2	838	34,0
BUZAU	1966	100,0	173	8,8	1748	88,9	9	0,5	45	2,3
CARAS-SEVERIN	2233	100,0	154	6,9	1712	76,7	87	3,9	367	16,4
CALARASI	1039	100,0	94	9,0	922	88,7	2	0,2	23	2,2
CLUJ	6261	100,0	483	7,7	5736	91,6	19	0,3	42	0,7
CONSTANTA	5898	100,0	419	7,1	4880	82,7	45	0,8	599	10,2
COVASNA	1476	100,0	90	6,1	1361	92,2	13	0,9	25	1,7
DAMBOVITA	1872	100,0	252	13,5	1543	82,4	91	4,9	77	4,1
DOLJ	4281	100,0	330	7,7	3937	92,0	237	5,5	14	0,3
GALATI	10396	100,0	204	2,0	7006	67,4	50	0,5	3186	30,6
GIURGIU	1519	100,0	87	5,7	1421	93,5	1	0,1	11	0,7
GORJ	2081	100,0	148	7,1	1890	90,8	21	1,0	43	2,1
HARGHITA	2309	100,0	203	8,8	2075	89,9	42	1,8	31	1,3
HUNEDOARA	4673	100,0	225	4,8	3611	77,3	24	0,5	837	17,9
IALOMITA	1692	100,0	65	3,8	1289	76,2	1	0,1	338	20,0
IASI	5189	100,0	390	7,5	4439	85,5	49	0,9	360	6,9
MARAMURES	3522	100,0	217	6,2	3223	91,5	664	18,9	82	2,3
MEHEDINTI	3560	100,0	98	2,8	2443	68,6	164	4,6	1019	28,6
MURES	2187	100,0	302	13,8	1833	83,8	63	2,9	52	2,4
NEAMT	6391	100,0	234	3,7	4469	69,9	151	2,4	1688	26,4
OLT	3278	100,0	114	3,5	2016	61,5	31	0,9	1148	35,0
PRAHOVA	7526	100,0	398	5,3	5140	68,3	73	1,0	1988	26,4
SALAJ	1801	100,0	149	8,3	1382	76,7	33	1,8	270	15,0
SATU MARE	2593	100,0	205	7,9	2370	91,4	85	3,3	18	0,7
SIBIU	1403	100,0	247	17,6	1073	76,5	29	2,1	83	5,9
SUCEAVA	3444	100,0	270	7,8	3127	90,8	9	0,3	47	1,4
TELEORMAN	2047	100,0	108	5,3	1922	93,9	47	2,3	17	0,8
TIMIS	5297	100,0	427	8,1	3942	74,4	32	0,6	928	17,5
TULCEA	857	100,0	169	19,7	670	78,2	204	23,8	18	2,1
VASLUI	2357	100,0	108	4,6	2212	93,8	4	0,2	37	1,6
VALCEA	1484	100,0	134	9,0	1292	87,1	2	0,1	58	3,9
VRANCEA	1664	100,0	108	6,5	1545	92,8	4	0,2	11	0,7
MUN. BUCURESTI	37979	100,0	1730	4,6	27696	72,9	672	1,8	8553	22,5
ILFOV	3656	100,0	257	7,0	2375	65,0	10	0,3	1024	28,0

*) by effect of implementation of Law no. 314/2001, art.1 and art. 6

*** Less than 0,01%

Table no. 8

**The number of incorporations in the Trade Register,
by counties and sources of capital,
in April 2006**

County	Total		out of which:					Ranking by: *	
			Private capital			State majority capital			Mixed capital (state+private)
			out of which:			out of which:			
			PF+AF	Companies	OC	RA	Companies		Companies
No.	%	No.	No.	No.	No.	No.	No.		
0	1	2	3	4	5	6	7	8	9
Total ROMÂNIA	10806	100,0	4036	6769				1	X
ALBA	190	1,8	94	96					24
ARAD	343	3,2	143	200					8
ARGES	292	2,7	145	147					12
BACAU	246	2,3	113	133					17
BIHOR	359	3,3	159	200					7
BISTRITA-NASAUD	161	1,5	99	62					27
BOTOSANI	149	1,4	99	50					29
BRASOV	340	3,1	92	248					9
BRAILA	134	1,2	59	75					32
BUZAU	173	1,6	74	99					25
CARAS-SEVERIN	154	1,4	64	90					28
CALARASI	94	0,9	35	59					39
CLUJ	483	4,5	144	339					2
CONSTANTA	419	3,9	111	308					4
COVASNA	90	0,8	40	50					40
DAMBOVITA	252	2,3	150	101				1	15
DOLJ	330	3,1	120	210					10
GALATI	204	1,9	75	129					22
GIURGIU	87	0,8	28	59					41
GORJ	148	1,4	83	65					31
HARGHITA	203	1,9	121	82					23
HUNEDOARA	225	2,1	68	157					19
IALOMITA	65	0,6	28	37					42
IASI	390	3,6	143	247					6
MARAMURES	217	2,0	111	106					20
MEHEDINTI	98	0,9	57	41					38
MURES	302	2,8	129	173					11
NEAMT	234	2,2	120	114					18
OLT	114	1,1	49	65					34
PRAHOVA	398	3,7	155	243					5
SALAJ	149	1,4	87	62					30
SATU MARE	205	1,9	104	101					21
SIBIU	247	2,3	88	159					16
SUCEAVA	270	2,5	161	109					13
TELEORMAN	108	1,0	56	52					35
TIMIS	427	4,0	116	311					3
TULCEA	169	1,6	110	59					26
VASLUI	108	1,0	50	58					36
VALCEA	134	1,2	65	69					33
VRANCEA	108	1,0	55	53					37
MUN. BUCURESTI	1730	16,0	170	1560					1
ILFOV	257	2,4	66	191					14

*) The total number of incorporations (col 1)

*** Less than 0,01%

Table no.9

**The number of incorporations in the Trade Register,
by counties and category
in April 2006**

County	Total		out of which:						RA	OC
			PF+AF	companies: 6770						
	SNC	SCS		SRL	SA	No.	No.			
	No.	%	No.	No.	No.			No.	No.	No.
0	1	2	3	4	5	6	7	8	9	
Total ROMÂNIA	10806	100,0	4036		1	6730	39			
ALBA	190	1,8	94			96				
ARAD	343	3,2	143			200				
ARGES	292	2,7	145			147				
BACAU	246	2,3	113			131	2			
BIHOR	359	3,3	159			199	1			
BISTRITA-NASAUD	161	1,5	99			62				
BOTOSANI	149	1,4	99			49	1			
BRASOV	340	3,1	92		1	244	3			
BRAILA	134	1,2	59			75				
BUZAU	173	1,6	74			98	1			
CARAS-SEVERIN	154	1,4	64			90				
CALARASI	94	0,9	35			59				
CLUJ	483	4,5	144			338	1			
CONSTANTA	419	3,9	111			305	3			
COVASNA	90	0,8	40			49	1			
DAMBOVITA	252	2,3	150			101	1			
DOLJ	330	3,1	120			210				
GALATI	204	1,9	75			129				
GIURGIU	87	0,8	28			59				
GORJ	148	1,4	83			63	2			
HARGHITA	203	1,9	121			82				
HUNEDOARA	225	2,1	68			155	2			
IALOMITA	65	0,6	28			37				
IASI	390	3,6	143			247				
MARAMURES	217	2,0	111			106				
MEHEDINTI	98	0,9	57			41				
MURES	302	2,8	129			172	1			
NEAMT	234	2,2	120			114				
OLT	114	1,1	49			65				
PRAHOVA	398	3,7	155			242	1			
SALAJ	149	1,4	87			62				
SATU MARE	205	1,9	104			99	2			
SIBIU	247	2,3	88			157	2			
SUCEAVA	270	2,5	161			108	1			
TELEORMAN	108	1,0	56			52				
TIMIS	427	4,0	116			308	3			
TULCEA	169	1,6	110			59				
VASLUI	108	1,0	50			58				
VALCEA	134	1,2	65			69				
VRANCEA	108	1,0	55			53				
MUN. BUCURESTI	1730	16,0	170			1549	11			
ILFOV	257	2,4	66			191				

Table no. 10

**The number of incorporations in the Trade Register, by field of activity*
and categories in April 2006**

CAEN segment	Field of activity	Total		out of which:						
				PF+AF	companies: 6770				RA	OC
		No.	%		No.	SNC	SCS	SRL		
				No.		No.	No.	No.	No.	No.
0	1	2	3	4	5	6	7	8	9	10
	Total ROMÂNIA	10806	100,0	4036		1	6730	39		
1	Agriculture, hunting and related service activities	935	8,7	624			311			
2	Forestry, logging and related service activities	54	0,5	12			42			
5	Fishing, fish farming and related service activities	81	0,7	65			16			
10	Mining of coal and lignite; extraction of peat	3	0,0				2	1		
11	Extraction of crude petroleum and natural gas; service activities incidental to oil and gas extraction, excluding surveying	1	0,0				1			
12	Mining of uranium and thorium ores						1			
13	Mining of metal ores	1	0,0				1			
14	Other mining and quarrying	13	0,1	1			12			
15	Manufacture of food products and beverages	140	1,3	60			79	1		
16	Manufacture of tobacco products									
17	Manufacture of textiles	27	0,2	8			19			
18	Manufacture of wearing apparel; dressing and dyeing of fur	93	0,9	37			56			
19	Tanning and dressing of leather; manufacture of luggage, handbags, saddlery, harness and footwear	17	0,2	3			14			
20	Manufacture of wood and of products of wood and cork, except furniture; manufacture of articles of straw and plaiting materials	133	1,2	73			59	1		
21	Manufacture of pulp, paper and paper products	9	0,1	4			5			
22	Publishing, printing and reproduction of recorded media	41	0,4	5			36			
23	Manufacture of coke, refined petroleum products and nuclear fuel	1	0,0				1			
24	Manufacture of chemicals and chemical products	8	0,1				8			
25	Manufacture of rubber and plastic products	34	0,3	3			31			
26	Manufacture of other non-metallic mineral products	60	0,6	29			31			
27	Manufacture of basic metals	3	0,0				3			
28	Manufacture of fabricated metal products, except machinery and equipment	156	1,4	74			82			
29	Manufacture of machinery and equipment n.e.c.	13	0,1	1			12			
30	Manufacture of office machinery and computers	3	0,0				3			
31	Manufacture of electrical machinery and apparatus n.e.c.	5	0,0				5			
32	Manufacture of radio, television and communication equipment and apparatus	6	0,1	2			4			
33	Manufacture of medical, precision and optical instruments, watches and clocks	20	0,2	7			13			
34	Manufacture of motor vehicles, trailers and semi- trailers	3	0,0				3			
35	Manufacture of other transport equipment	9	0,1	1			8			
36	Manufacture of furniture; manufacturing n.e.c.	105	1,0	47			58			
37	Recycling	32	0,3	2			30			
40	Electricity, gas, steam and hot water supply	10	0,1				10			
41	Collection, purification and distribution of water	3	0,0				2	1		
45	Construction	1333	12,3	489			844			

Table no. 10
(continuance)

**The number of incorporations in the Trade Register, by field of activity*
and categories in April 2006**

CAEN segment	Field of activity	Total		out of which:						
				PF+AF	companies: 6770				RA	OC
		No.	%		No.	SNC	SCS	SRL		
				No.		No.	No.	No.	No.	No.
0	1	2	3	4	5	6	7	8	9	10
	Total ROMÂNIA	10806	100,0	4036		1	6730	39		
50	Sale, maintenance and repair of motor vehicles and motorcycles; retail sale of automotive fuel	284	2,6	90			194			
51	Wholesale trade and commission trade, except of motor vehicles and motorcycles	1038	9,6	264			774			
52	Retail trade, except of motor vehicles and motorcycles; repair of personal and household goods	2251	20,8	1055			1196			
55	Hotels and restaurants	462	4,3	108			353	1		
60	Land transport; transport via pipelines	480	4,4	190		1	289			
61	Water transport	6	0,1	1			5			
62	Air transport	1	0,0				1			
63	Supporting and auxiliary transport activities; activities of travel agencies	80	0,7	9			70	1		
64	Post and telecommunications	85	0,8	10			75			
65	Financial intermediation, except insurance and pension funding	42	0,4				23	19		
66	Insurance and pension funding, except compulsory social security	3	0,0					3		
67	Activities auxiliary to financial intermediation	42	0,4	2			38	2		
70	Real estate activities	392	3,6	7			377	8		
71	Renting of machinery and equipment without operator and of personal and household goods	31	0,3	2			29			
72	Computer and related activities	281	2,6	112			169			
73	Research and development	14	0,1	2			12			
74	Other business activities	1266	11,7	313			953			
75	Public administration and defence; compulsory social security									
80	Education	49	0,5	15			34			
85	Health and social work	107	1,0	3			104			
90	Sewage and refuse disposal, sanitation and similar activities	8	0,1				8			
91	Activities of membership organizations n.e.c.									
92	Recreational, cultural and sporting activities	250	2,3	142			107	1		
93	Other service activities	265	2,5	147			118			
95	Activities of households as employers of domestic staff	13	0,1	13						
96	Extra-territorial organizations and bodies	1	0,0	1						

*)Field of activity declared when registered, according to CAEN classification

Table no. 11

**Number of companies registered and the amount
of subscribed capital, by county in April 2006**

County	Total registered companies		Subscribed capital		Average subscribed capital on company
	No.	%	mii RON	%	mii RON
0	1	2	3	4	5
Total ROMÂNIA	6770	100,0	64023,8	100,0	9,5
ALBA	96	1,4	34,8	0,1	0,4
ARAD	200	3,0	787,5	1,2	3,9
ARGES	147	2,2	1340,4	2,1	9,1
BACAU	133	2,0	1062,3	1,7	8,0
BIHOR	200	3,0	226,1	0,4	1,1
BISTRITA-NASAUD	62	0,9	32,7	0,1	0,5
BOTOSANI	50	0,7	88,6	0,1	1,8
BRASOV	248	3,7	1293,2	2,0	5,3
BRAILA	75	1,1	34,4	0,1	0,5
BUZAU	99	1,5	92,4	0,1	0,9
CARAS-SEVERIN	90	1,3	552,9	0,9	6,1
CALARASI	59	0,9	17,6	0,0	0,3
CLUJ	339	5,0	191,9	0,3	0,6
CONSTANTA	308	4,5	616,0	1,0	2,0
COVASNA	50	0,7	11223,3	17,5	224,5
DAMBOVITA	102	1,5	273,8	0,4	2,7
DOLJ	210	3,1	216,1	0,3	1,0
GALATI	129	1,9	56,5	0,1	0,4
GIURGIU	59	0,9	9905,6	15,5	167,9
GORJ	65	1,0	179,7	0,3	2,8
HARGHITA	82	1,2	186,0	0,3	2,3
HUNEDOARA	157	2,3	2255,1	3,5	14,5
IALOMITA	37	0,5	22,3	0,0	0,6
IASI	247	3,6	1409,6	2,2	5,7
MARAMURES	106	1,6	194,2	0,3	1,8
MEHEDINTI	41	0,6	30,5	0,0	0,7
MURES	173	2,6	80,4	0,1	0,5
NEAMT	114	1,7	500,4	0,8	4,4
OLT	65	1,0	575,9	0,9	8,9
PRAHOVA	243	3,6	450,7	0,7	1,9
SALAJ	62	0,9	21,0	0,0	0,4
SATU MARE	101	1,5	39,5	0,1	0,4
SIBIU	159	2,3	287,3	0,4	1,8
SUCEAVA	109	1,6	71,5	0,1	0,7
TELEORMAN	52	0,8	16,4	0,0	0,3
TIMIS	311	4,6	1529,2	2,4	4,9
TULCEA	59	0,9	43,0	0,1	0,7
VASLUI	58	0,9	13,0	0,0	0,2
VALCEA	69	1,0	970,4	1,5	14,1
VRANCEA	53	0,8	203,1	0,3	3,8
MUN. BUCURESTI	1560	23,0	24898,9	38,9	16,0
ILFOV	191	2,8	1999,6	3,1	10,5

Note: The average does not include filials because according to the Law no.31/1990 they are not juridical persons

**** Less than 0,01%*

Table no. 12

**Number of registered companies and the amount
of subscribed capital by category,
in April 2006**

Company type	Total registered companies		Subscribed capital		Average subscribed capital on company
	No.	%	mii RON	%	mil. RON
0	1	2	3	4	5
Total ROMÂNIA	6770	100,0	64023,8	100,0	9,5
SNC					
SCS	1	0,0			
SA	39	0,6	18899,5	29,5	1050,0
SRL	6730	99,4	45124,2	70,5	6,7
SCA					

Note: The average does not include filials because according to the Law no.31/1990 they are not juridical persons

*** Less than 0,01%

Diagram no.5

