



MINISTRY OF JUSTICE

THE NATIONAL TRADE REGISTER OFFICE

București, Bd. Unirii nr. 74, Bl. J3b, tronson II+III, sector 3; Telefon: +40 21 316.08.04, 316.08.10; Fax: +40 21 316.08.03 Cod poștal: 030837
Website: www.onrc.ro; E-mail: onrc@onrc.ro; Cod de identificare Fiscală: 14942091; înregistrat ca operator date personale sub nr.1350

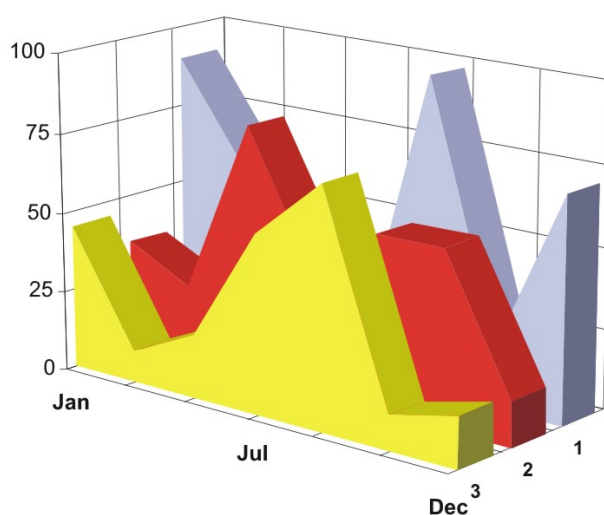
PROCEEDINGS IN THE CENTRAL TRADE REGISTER

STATISTICAL SYNTHESIS

OF

RECORDS IN THE CENTRAL TRADE REGISTER

- the 31th of March 2006 - provisional data -



- ISSUE No. 172 -

**MINISTRY OF JUSTICE
THE NATIONAL TRADE REGISTER OFFICE**

- Operations of incorporation of companies, changes in statutory documents and strike-off of companies are based on Law No.26/1990 reissued, Law No.31/1990, reissued, OUG No.76/2001, reissued and Methodology Norms No. P/608/1998.

- This paper presents the trend in operations registered in The Trade Register Office attached to the law court of Bucharest and in the Trade Register Offices attached to the law court in each county of Romania.

- Information recorded in the Central Trade Register concern operations compulsory by law to be registered in the trade registers within the 42 trade register offices attached to the law courts.

• No part of the content of this publication, in original or in any modified format, may be reproduced, stored in a retrieval system, or transmitted, in any form or by any means, without the prior permission in writing of The Ministry of Justice – The National Trade Register Office.

• The content of this publication may be referred to in articles, studies, books, as supporting or explanatory data under the condition only, the source of the information to be clearly and precisely specified.

Contents

	Page
1 Explanatory Note	1
2.1 Data for December 1990 – March 2006	3
Table no.1 – Operations registered in the Trade Register, by categories during the period of December 1990 – March 2006, in total by country and counties, rate of categories of operations in total operations country	3
Table no.1.a – Operations registered in the Trade Register, by categories during the period of December 1990 – March 2006, in total by country and counties, counties' rate in total country	4
Table no. 3 – Number and structure of incorporations in the Trade Register, by years, during the period of December 1990- March 2006	5
Table no.4 – The number of incorporations in the Trade Register, by counties and sources of capital, in the period December 1990 - March 2006	6
Table no. 5 – The number of incorporations in the Trade Register, by counties and categories, during the period of December 1990 – March 2006	7
Table no. 6 – The number of incorporations in the Trade Register, by field of activity and categories, during the period of December 1990 - March 2006	8
2.2 Data for March 2006	10
Table no. 7 – Operations carried on with the Trade Registers, by counties and categories, in March 2006	10
Table no. 8 – The number of incorporations in the Trade Register, by counties and sources of capital, in March 2006	11
Table no. 9 – The number of incorporations in the Trade Register, by counties and category in March 2006	12
Table no. 10 –The number of incorporations in the Trade Register, by field of activity and categories in March 2006	13
Table no. 11 – Number of companies registered and the amount of subscribed capital, by county in March 2006	15
Table no. 12– Number of registered companies and the amount of subscribed capital by category, in March 2006	16
Diagram no. 5 – Average subscribed capital on company in March 2006	16

Explanatory Note

The Trade Register Office is set-up by Law No. 26/1990, reissued and modified by OUG No. 129/2002, became an active institution since December 1990 and is structured in two levels:

- the national level, represented by the National Trade Register Office organised under the Ministry of Justice
- the local level, represented by the 42 trade register offices attached to the law courts and co-ordinated by the National Trade Register Office

The categories of businessmen compulsory to register in the trade register are:

- natural persons tradesmen and family associations doing usually commercial acts, commercial companies, national companies, companies under state supervision, and co-operative organisations
- subsidiaries registered as commercial companies and legal persons following the legal proceedings of set-up, activity and incorporation according to the type of the legally set-up company.

Usual Terms:

- incorporation – represents the registration of the company in the trade registry awarding the quality of legal person.

- other statutory documents – represent the official registration of the changes occurred in a company's life, such as: changes in headquarters' address, increase or decrease of the issued capital, merger, liquidation, strike-off, etc.

- strike-off – represents the removal of a company from the trade registry, due to dissolution and liquidation, being also the very moment the company loses its quality of legal person. Data also include the companies under the provisions of Law No. 314/2001.

- change of certificate – represents the obligation of companies set-up before OGU No. 76/2001 republished came in force, to request the incorporation certificate and fiscal registration certificate to be replaced with the new registration certificate containing the given unique registration code.

The ratio of these changes is being calculated as a proportion between the effective number of changes and the number of active companies due to operate the change.

- active company from the legal point of view – a company registered in the trade register and which is not affected by any of the situations leading to the temporary or permanent loss of this status (e.g. dissolution, liquidation, strike-off)

- operations represent all the records in the trade registry including incorporations, other statutory documents and strike-off of companies, irrespective of the object of activity, company's type and origin of the subscribed capital (local or foreign investment).

• **Terms used in tables and charts**

➤ **Number of companies:** represents, depending on the specific table, the number of companies incorporated in the related period, the number of companies being struck-off from the trade registry.

➤ **Amount of the subscribed capital:**

- **total, in local currency:** the amount of the subscribed capital resulted from totalising the amount subscribed (in cash and in kind) in local currency (ROL)

➤ **Regional development:**

<i>North-East:</i>	Suceava, Botoșani, Neamț, Iași, Bacău, Vaslui.
<i>South-East:</i>	Vrancea, Galați, Buzău, Brăila, Tulcea, Constanța.
<i>South-Muntenia:</i>	Argeș, Dâmbovița, Prahova, Teleorman, Giurgiu, Călărași, Ialomița.
<i>South-West Oltenia:</i>	Gorj, Vâlcea, Dolj, Mehedinți, Olt.
<i>West:</i>	Arad, Caraș-Severin, Hunedoara, Timiș.
<i>North-West:</i>	Bihor, Bistrița, Cluj, Satu Mare, Sălaj, Maramureș.
<i>Center:</i>	Alba, Brașov, Covasna, Harghita, Mureș, Sibiu.
<i>Bucharest-Ilfov:</i>	București, Ilfov.

CAEN code – The Classification of Activities in the National Economy was approved by HG No. 656/1997, modified by Order No 601 of the President of National Institute of Statistics being compatible with the international classification used in statistic reports and official documents. Activities are ranked upon homogeneity principle by sections, divisions, groups and classes.

Common abbreviations

- **PF** - Natural Persons Tradesman
- **AF** - Family association
- **SNC** - General Partnership
- **SCS** - Limited Partnership
- **SA** - Joint stock company
- **SRL** - Limited liability company
- **RA** - Company Under State Supervision
- **OC** - Co-operative organisation

Source:

The integrated IT system of the trade registry is designed by The National Trade Registry Office according to the provisions of the related legislation in force. The source of information is the computerised system of the trade registers handled by the Trade Register Offices attached to the law courts.

Table no. 1

**Operations registered in the Trade Register, by categories
during the period of December 1990 - March 2006 in total by country and counties,
- rate of categories of operations in total operations/country -**

Counties	Total of registered operations		out of which :									
			Registered companies		Changes in statutory documents		out of which :				Strike off companies	
	of liquidation, dissolution						out of which :					
	No.	%	No.	%	No.	%	No.	%	No.	%	No.	%
0	1	2	3	4	5	6	7	8	9	10	11	12
Total ROMÂNIA	6548899	100,0	1456595	100,0	4755417	100,0	9911	100,0	165855	100,0	336887	100,0
ALBA	88786	1,4	22592	1,6	64141	1,3	371	3,7	3596	2,2	2053	0,6
ARAD	146187	2,2	35206	2,4	103875	2,2	369	3,7	2974	1,8	7106	2,1
ARGES	157548	2,4	37587	2,6	113728	2,4	197	2,0	4219	2,5	6233	1,9
BACAU	153777	2,3	37174	2,6	109859	2,3	1003	10,1	5280	3,2	6744	2,0
BIHOR	197821	3,0	42792	2,9	147460	3,1	303	3,1	4598	2,8	7569	2,2
BISTRITA-NASAUD	84109	1,3	17871	1,2	61000	1,3	72	0,7	1120	0,7	5238	1,6
BOTOSANI	60496	0,9	18101	1,2	39722	0,8	66	0,7	1563	0,9	2673	0,8
BRASOV	221564	3,4	45082	3,1	166711	3,5	149	1,5	4892	2,9	9771	2,9
BRAILA	83946	1,3	20571	1,4	61809	1,3	61	0,6	2540	1,5	1566	0,5
BUZAU	128452	2,0	27070	1,9	92241	1,9	146	1,5	2109	1,3	9141	2,7
CARAS-SEVERIN	86992	1,3	17917	1,2	62169	1,3	41	0,4	1922	1,2	6906	2,0
CALARASI	57219	0,9	14914	1,0	39962	0,8	79	0,8			2343	0,7
CLUJ	282582	4,3	66102	4,5	212283	4,5	197	2,0			4197	1,2
CONSTANTA	278830	4,3	61618	4,2	200272	4,2	926	9,3	10621	6,4	16940	5,0
COVASNA	62844	1,0	12483	0,9	46523	1,0	18	0,2	1175	0,7	3838	1,1
DAMBOVITA	105572	1,6	27284	1,9	66540	1,4	98	1,0	2951	1,8	11748	3,5
DOLJ	172634	2,6	38816	2,7	122832	2,6	215	2,2	5633	3,4	10986	3,3
GALATI	183857	2,8	34873	2,4	139833	2,9	125	1,3	5370	3,2	9151	2,7
GIURGIU	43837	0,7	11750	0,8	28836	0,6	47	0,5			3251	1,0
GORJ	87514	1,3	17605	1,2	65918	1,4	48	0,5	2667	1,6	3991	1,2
HARGHITA	95786	1,5	21656	1,5	70795	1,5	51	0,5			3335	1,0
HUNEDOARA	121732	1,9	30248	2,1	83168	1,7	126	1,3	2944	1,8	8316	2,5
IALOMITA	64521	1,0	13914	1,0	46122	1,0	78	0,8	1586	1,0	4485	1,3
IASI	226530	3,5	44160	3,0	172480	3,6	597	6,0	4224	2,5	9890	2,9
MARAMURES	130437	2,0	37744	2,6	86562	1,8	159	1,6	2924	1,8	6131	1,8
MEHEDINTI	68312	1,0	16853	1,2	45552	1,0	55	0,6	3085	1,9	5907	1,8
MURES	157740	2,4	36698	2,5	115267	2,4	83	0,8	2942	1,8	5775	1,7
NEAMT	134518	2,1	32670	2,2	93719	2,0	304	3,1	2435	1,5	8129	2,4
OLT	91796	1,4	21262	1,5	63366	1,3	21	0,2	2033	1,2	7168	2,1
PRAHOVA	233269	3,6	47863	3,3	175697	3,7	274	2,8	3934	2,4	9709	2,9
SALAJ	53075	0,8	13824	0,9	35804	0,8	29	0,3	683	0,4	3447	1,0
SATU MARE	104161	1,6	24318	1,7	72512	1,5	26	0,3	2934	1,8	7331	2,2
SIBIU	142547	2,2	27841	1,9	110212	2,3	31	0,3	2583	1,6	4494	1,3
SUCEAVA	162041	2,5	37394	2,6	112044	2,4	29	0,3	2387	1,4	12603	3,7
TELEORMAN	73859	1,1	16730	1,1	55155	1,2	49	0,5	1504	0,9	1974	0,6
TIMIS	249541	3,8	49879	3,4	190033	4,0	271	2,7	7273	4,4	9629	2,9
TULCEA	66170	1,0	15162	1,0	48317	1,0	149	1,5	1002	0,6	2691	0,8
VASLUI	78467	1,2	19038	1,3	52066	1,1	197	2,0	1385	0,8	7363	2,2
VALCEA	110637	1,7	24559	1,7	78838	1,7	138	1,4	1888	1,1	7240	2,1
VRANCEA	85658	1,3	18262	1,3	64004	1,3	51	0,5	1594	1,0	3392	1,0
MUN. BUCURESTI	1331396	20,3	277346	19,0	982051	20,7	2641	26,6	51406	31,0	71999	21,4
ILFOV	82139	1,3	21766	1,5	55939	1,2	21	0,2	1879	1,1	4434	1,3

*) according to the effect of Law No. 314/2001, art.1 și art. 6

*** Less than 0,01%

Table no. 2

**Operations registered in the Trade Register, by categories
during the period of December 1990 - March 2006, in total by country and counties,
- rate of categories of operations in total operations/country -**

Counties	Total of registered operations		out of which :									
			Registered companies		Changes in statutory documents		out of which :				Strike off companies	
	of liquidation, dissolution						out of which :					
	No.	%	No.	%	No.	%	No.	%	No.	%	No.	%
0	1	2	3	4	5	6	7	8	9	10	11	12
Total ROMÂNIA	6548899	100,0	1456595	22,2	4755417	72,6	9911	0,2	165855	2,5	336887	5,1
ALBA	88786	100,0	22592	25,4	64141	72,2	371	0,4	3596	4,1	2053	2,3
ARAD	146187	100,0	35206	24,1	103875	71,1	369	0,3	2974	2,0	7106	4,9
ARGES	157548	100,0	37587	23,9	113728	72,2	197	0,1	4219	2,7	6233	4,0
BACAU	153777	100,0	37174	24,2	109859	71,4	1003	0,7	5280	3,4	6744	4,4
BIHOR	197821	100,0	42792	21,6	147460	74,5	303	0,2	4598	2,3	7569	3,8
BISTRITA-NASAUD	84109	100,0	17871	21,2	61000	72,5	72	0,1	1120	1,3	5238	6,2
BOTOSANI	60496	100,0	18101	29,9	39722	65,7	66	0,1	1563	2,6	2673	4,4
BRASOV	221564	100,0	45082	20,3	166711	75,2	149	0,1	4892	2,2	9771	4,4
BRAILA	83946	100,0	20571	24,5	61809	73,6	61	0,1	2540	3,0	1566	1,9
BUZAU	128452	100,0	27070	21,1	92241	71,8	146	0,1	2109	1,6	9141	7,1
CARAS-SEVERIN	86992	100,0	17917	20,6	62169	71,5	41	0,0	1922	2,2	6906	7,9
CALARASI	57219	100,0	14914	26,1	39962	69,8	79	0,1			2343	4,1
CLUJ	282582	100,0	66102	23,4	212283	75,1	197	0,1			4197	1,5
CONSTANTA	278830	100,0	61618	22,1	200272	71,8	926	0,3	10621	3,8	16940	6,1
COVASNA	62844	100,0	12483	19,9	46523	74,0	18	0,0	1175	1,9	3838	6,1
DAMBOVITA	105572	100,0	27284	25,8	66540	63,0	98	0,1	2951	2,8	11748	11,1
DOLJ	172634	100,0	38816	22,5	122832	71,2	215	0,1	5633	3,3	10986	6,4
GALATI	183857	100,0	34873	19,0	139833	76,1	125	0,1	5370	2,9	9151	5,0
GIURGIU	43837	100,0	11750	26,8	28836	65,8	47	0,1			3251	7,4
GORJ	87514	100,0	17605	20,1	65918	75,3	48	0,1	2667	3,0	3991	4,6
HARGHITA	95786	100,0	21656	22,6	70795	73,9	51	0,1			3335	3,5
HUNEDOARA	121732	100,0	30248	24,8	83168	68,3	126	0,1	2944	2,4	8316	6,8
IALOMITA	64521	100,0	13914	21,6	46122	71,5	78	0,1	1586	2,5	4485	7,0
IASI	226530	100,0	44160	19,5	172480	76,1	597	0,3	4224	1,9	9890	4,4
MARAMURES	130437	100,0	37744	28,9	86562	66,4	159	0,1	2924	2,2	6131	4,7
MEHEDINTI	68312	100,0	16853	24,7	45552	66,7	55	0,1	3085	4,5	5907	8,6
MURES	157740	100,0	36698	23,3	115267	73,1	83	0,1	2942	1,9	5775	3,7
NEAMT	134518	100,0	32670	24,3	93719	69,7	304	0,2	2435	1,8	8129	6,0
OLT	91796	100,0	21262	23,2	63366	69,0	21	0,0	2033	2,2	7168	7,8
PRAHOVA	233269	100,0	47863	20,5	175697	75,3	274	0,1	3934	1,7	9709	4,2
SALAJ	53075	100,0	13824	26,0	35804	67,5	29	0,1	683	1,3	3447	6,5
SATU MARE	104161	100,0	24318	23,3	72512	69,6	26	0,0	2934	2,8	7331	7,0
SIBIU	142547	100,0	27841	19,5	110212	77,3	31	0,0	2583	1,8	4494	3,2
SUCEAVA	162041	100,0	37394	23,1	112044	69,1	29	0,0	2387	1,5	12603	7,8
TELEORMAN	73859	100,0	16730	22,7	55155	74,7	49	0,1	1504	2,0	1974	2,7
TIMIS	249541	100,0	49879	20,0	190033	76,2	271	0,1	7273	2,9	9629	3,9
TULCEA	66170	100,0	15162	22,9	48317	73,0	149	0,2	1002	1,5	2691	4,1
VASLUI	78467	100,0	19038	24,3	52066	66,4	197	0,3	1385	1,8	7363	9,4
VALCEA	110637	100,0	24559	22,2	78838	71,3	138	0,1	1888	1,7	7240	6,5
VRANCEA	85658	100,0	18262	21,3	64004	74,7	51	0,1	1594	1,9	3392	4,0
MUN. BUCURESTI	1331396	100,0	277346	20,8	982051	73,8	2641	0,2	51406	3,9	71999	5,4
ILFOV	82139	100,0	21766	26,5	55939	68,1	21	0,0	1879	2,3	4434	5,4

*) according to the effect of Law No. 314/2001, art.1 și art. 6

*** Less than 0,01%

Table no.3

Number and structure of incorporations in the Trade Register, by years, during the period of December 1990 - March 2006

Period (year, month)	Registered companies	Percentage	
	No.	%	%
0	1	2	3
Total, 31 Februaryy 2006, out of which	1456595	89,20	
Year 1990	81	0,01	
Year 1991	95840	6,58	
Year 1992	137456	9,44	
Year 1993	117078	8,04	
Year 1994	137445	9,44	
Year 1995	65479	4,50	
Year 1996	62089	4,26	
Year 1997	55663	3,82	
Year 1998	63878	4,39	
Year 1999	57197	3,93	
Year 2000	57291	3,93	
Year 2001	61265	4,21	
Year 2002	84780	5,82	
Year 2003	123582	8,48	
Year 2004	144284	9,91	
Year 2005	157375		
Year 2006 (I - XII) out of which :	35812		140,2
January	8797		24,6
February	12605		35,2
March	14410		40,2

Note: Column 2 reveals the annual structure of incorporations; column 3 reveals the structure by months during the current year.

*** Less than 0,01%
Diagram no.1



Table no. 4

The number of incorporations in the Trade Register, by counties and sources of capital, in the period December 1990 - March 2006

Counties	Total		out of which:					Ranking by: *	
			Private capital			State majority capital			Mixed capital (state+private)
			out of which:			out of which:			
			PF+AF	Companies	OC	RA	Companies		Companies
No.	%	No.	No.	No.	No.	No.	No.		
0	1	2	3	4	5	6	7	8	9
Total ROMÂNIA	1456595	100,0	369592	1069363	5391	1328	2360	8561	X
ALBA	22592	1,6	7723	14476	141	35	47	170	24
ARAD	35207	2,4	13553	21098	157	26	40	333	15
ARGES	37587	2,6	12219	24990	168	29	29	152	11
BACAU	37174	2,6	12384	24332	158	35	42	223	13
BIHOR	42792	2,9	8845	33395	146	37	62	307	8
BISTRITA-NASAUD	17871	1,2	6365	11251	98	19	29	109	33
BOTOSANI	18101	1,2	8108	9559	122	21	172	119	31
BRASOV	45082	3,1	9028	35643	114	41	87	169	6
BRAILA	20571	1,4	5089	15150	96	28	43	165	28
BUZAU	27070	1,9	7797	18932	142	26	42	131	21
CARAS-SEVERIN	17917	1,2	6250	11330	102	33	65	137	32
CALARASI	14914	1,0	4343	10295	86	18	77	95	38
CLUJ	66102	4,5	16315	49284	150	52	40	261	2
CONSTANTA	61618	4,2	11670	49105	203	51	49	540	3
COVASNA	12483	0,9	4108	8143	67	24	32	109	41
DAMBOVITA	27284	1,9	12627	14267	134	29	75	152	20
DOLJ	38816	2,7	7517	30838	162	40	57	202	9
GALATI	34873	2,4	6627	27887	135	30	51	143	16
GIURGIU	11750	0,8	2749	8681	80	21	109	110	42
GORJ	17605	1,2	3990	13198	184	50	83	100	34
HARGHITA	21656	1,5	8236	13040	85	23	43	229	26
HUNEDOARA	30248	2,1	7950	21806	81	37	92	282	18
IALOMITA	13914	1,0	5380	8308	74	15	46	91	39
IASI	44160	3,0	11926	31622	164	34	70	344	7
MARAMURES	37744	2,6	15494	21929	122	37	39	123	10
MEHEDINTI	16853	1,2	5226	11402	82	19	26	98	35
MURES	36698	2,5	13561	22751	155	30	34	167	14
NEAMT	32670	2,2	12028	20257	161	29	30	165	17
OLT	21262	1,5	8517	12371	161	26	64	123	27
PRAHOVA	47863	3,3	14424	32873	177	50	68	271	5
SALAJ	13824	0,9	5368	8240	107	19	28	62	40
SATU MARE	24318	1,7	7707	16328	88	19	42	134	23
SIBIU	27841	1,9	6633	20792	118	32	108	158	19
SUCEAVA	37394	2,6	17925	18953	202	30	64	220	12
TELEORMAN	16730	1,1	5720	10611	152	21	44	182	36
TIMIS	49879	3,4	7629	41660	140	37	68	345	4
TULCEA	15162	1,0	4994	9830	66	18	42	212	37
VASLUI	19038	1,3	9366	9371	109	16	41	135	29
VALCEA	24559	1,7	9709	14492	168	40	37	113	22
VRANCEA	18262	1,3	5521	12480	104	16	27	114	30
MUN. BUCURESTI	277345	19,0	16260	259624	138	115	103	1105	1
ILFOV	21766	1,5	2711	18769	92	20	13	161	25

*) The total number of incorporations (col 1)

*** Less than 0,01%

Table no. 5

**The number of incorporations in the Trade Register,
by counties and categories, during the period of
December 1990 - March 2006**

County	Total		out of which:						
			PF+AF	companies: 1080284				RA	OC
	No.	%		SNC	SCS	SRL	SA		
			No.	No.	No.	No.	No.	No.	
0	1	2	3	4	5	6	7	8	9
Total ROMÂNIA	1456595	100,0	369592	32643	1560	1014918	31157	1328	5391
ALBA	22592	1,6	7723	888	11	13254	540	35	141
ARAD	35206	2,4	13553	53	10	20755	651	26	157
ARGES	37587	2,6	12219	107	14	24257	793	29	168
BACAU	37174	2,6	12384	1299	4	22590	703	35	158
BIHOR	42792	2,9	8845	125	47	32716	876	37	146
BISTRITA-NASAUD	17871	1,2	6365	146	21	10818	404	19	98
BOTOSANI	18101	1,2	8108	468	1	8940	441	21	122
BRASOV	45082	3,1	9028	239	19	34825	816	41	114
BRAILA	20571	1,4	5089	376	12	14468	502	28	96
BUZAU	27070	1,9	7797	3747	46	14765	547	26	142
CARAS-SEVERIN	17917	1,2	6250	117	8	10952	455	33	102
CALARASI	14914	1,0	4343	609	3	9512	343	18	86
CLUJ	66102	4,5	16315	2111	18	46261	1195	52	150
CONSTANTA	61618	4,2	11670	311	23	47927	1433	51	203
COVASNA	12483	0,9	4108	148	4	7840	292	24	67
DAMBOVITA	27284	1,9	12627	60	8	13950	476	29	134
DOLJ	38816	2,7	7517	1560	8	28685	844	40	162
GALATI	34873	2,4	6627	1574	6	25690	811	30	135
GIURGIU	11750	0,8	2749	35	8	8545	312	21	80
GORJ	17605	1,2	3990	29	1	12880	471	50	184
HARGHITA	21656	1,5	8236	62	6	12768	476	23	85
HUNEDOARA	30248	2,1	7950	1166	98	20265	651	37	81
IALOMITA	13914	1,0	5380	266	131	7833	335	15	74
IASI	44160	3,0	11926	506	111	30443	974	34	164
MARAMURES	37744	2,6	15494	1926	23	19567	574	37	122
MEHEDINTI	16853	1,2	5226	427	3	10776	320	19	82
MURES	36698	2,5	13561	37	34	22246	635	30	155
NEAMT	32670	2,2	12028	3293	30	16479	650	29	161
OLT	21262	1,5	8517	1611	1	10468	478	26	161
PRAHOVA	47863	3,3	14424	3122	14	29217	859	50	177
SALAJ	13824	0,9	5368	600	4	7449	277	19	107
SATU MARE	24318	1,7	7707	283	5	15763	453	19	88
SIBIU	27841	1,9	6633	775	48	19606	629	32	118
SUCEAVA	37394	2,6	17925	438	8	18223	568	30	202
TELEORMAN	16730	1,1	5720	272	399	9766	400	21	152
TIMIS	49879	3,4	7629	606	27	40230	1210	37	140
TULCEA	15162	1,0	4994	1363	114	8142	465	18	66
VASLUI	19038	1,3	9366	90	11	9052	394	16	109
VALCEA	24559	1,7	9709	363	6	13808	465	40	168
VRANCEA	18262	1,3	5521	356	10	11818	437	16	104
MUN. BUCURESTI	277346	19,0	16260	1030	295	253067	6440	115	138
ILFOV	21766	1,5	2711	49	30	18302	562	20	92

Table no. 6

**The number of incorporations in the Trade Register, by field of activity*
during the period of December 1990 - March 2006**

CAEN segment	Field of activity	Total		out of which:						RA	OC
				PF+AF	companies:				1080284		
		No.	%		No.	SNC	SCS	SRL		SA	
				No.		No.	No.	No.	No.	No.	
0	1	2	3	4	5	6	7	8	9	10	
	Total ROMANIA	1456595	100,0	369592	32643	1560	1014918	31157	1328	5391	
1	Agriculture, hunting and related service activities	58115	4,0	12616	2024	44	39491	3772	51	117	
2	Forestry, logging and related service activities	7766	0,5	993	152	3	6308	220	82	8	
5	Fishing, fish farming and related service activities	2559	0,2	1412	17	3	1074	53			
10	Mining of coal and lignite; extraction of peat	107	0,0	2			70	31	4		
11	Extraction of crude petroleum and natural gas; service activities incidental to oil and gas extraction, excluding surveying	318	0,0	3	1		146	122	46		
12	Mining of uranium and thorium ores	133	0,0	32			95	6			
13	Mining of metal ores	523	0,0	163			297	55	8		
14	Other mining and quarrying	1440	0,1	107	9	1	1153	167	2	1	
15	Manufacture of food products and beverages	72030	4,9	13813	3260	149	52714	1841	5	248	
16	Manufacture of tobacco products	285	0,0	47			206	31	1		
17	Manufacture of textiles	11414	0,8	2290	556	16	8002	405		145	
18	Manufacture of wearing apparel; dressing and dyeing of fur	20165	1,4	4533	875	38	14057	356	1	305	
19	Tanning and dressing of leather; manufacture of luggage, handbags, saddlery, harness and footwear	5088	0,3	879	112	6	3916	123	1	51	
20	Manufacture of wood and of products of wood and cork, except furniture; manufacture of articles of straw and plaiting materials	23928	1,6	8382	575	29	14396	495	9	42	
21	Manufacture of pulp, paper and paper products	1692	0,1	110	21	1	1450	97		13	
22	Publishing, printing and reproduction of recorded media	11263	0,8	903	317	21	9597	401	14	10	
23	Manufacture of coke, refined petroleum products and nuclear fuel	253	0,0	24			193	34	2		
24	Manufacture of chemicals and chemical products	3573	0,2	116	89	1	2979	376	6	6	
25	Manufacture of rubber and plastic products	5861	0,4	548	313	7	4712	256		24	
26	Manufacture of other non-metallic mineral products	8513	0,6	2575	212	6	5323	379	5	13	
27	Manufacture of basic metals	2387	0,2	166	39	3	1963	206	3	7	
28	Manufacture of fabricated metal products, except machinery and equipment	15717	1,1	3622	361	23	10919	719	11	62	
29	Manufacture of machinery and equipment n.e.c.	3657	0,3	99	44	7	3063	420	19	5	
30	Manufacture of office machinery and computers	1745	0,1	15	25	4	1621	80			
31	Manufacture of electrical machinery and apparatus n.e.c.	1848	0,1	105	44	6	1543	144		6	
32	Manufacture of radio, television and communication equipment and apparatus	829	0,1	53	14	4	684	73		1	
33	Manufacture of medical, precision and optical instruments, watches and clocks	2389	0,2	578	17	2	1689	99		4	
34	Manufacture of motor vehicles, trailers and semi-trailers	875	0,1	30	31	3	687	122		2	
35	Manufacture of other transport equipment	1794	0,1	264	86	7	1241	121	73	2	
36	Manufacture of furniture; manufacturing n.e.c.	14563	1,0	4134	284	16	9633	333	5	158	
37	Recycling	4554	0,3	406	51	5	3919	172		1	
40	Electricity, gas, steam and hot water supply	2827	0,2	834	3	1	1398	503	88		
41	Collection, purification and distribution of water	3525	0,2	1618	2		1644	188	73		
45	Construction	79218	5,4	21053	611	42	54985	2397	53	77	

*Field of activity declared when registered, according to CAEN classification

Table no. 6
(continuing)

**The number of incorporations in the Trade Register, by field of activity*
and categories, during the period of December 1990 - March 2006**

CAEN segment	Field of activity	Total		out of which:						
				PF+AF	companies: 1080284				RA	OC
		No.	%		No.	SNC	SCS	SRL		
				No.		No.	No.	No.	No.	No.
0	1	2	3	4	5	6	7	8	9	10
	Total ROMÂNIA	1456595	100,0	369592	32643	1560	1014918	31157	1328	5391
50	Sale, maintenance and repair of motor vehicles and motorcycles; retail sale of automotive fuel	51237	3,5	7932	1244		40957	1022	6	42
51	Wholesale trade and commission trade, except of motor vehicles and motorcycles	192542	13,2	15957	4523	150	168325	3270	35	282
52	Retail trade, except of motor vehicles and motorcycles; repair of personal and household goods	479732	32,9	169072	11914	557	293320	2483	5	2380
55	Hotels and restaurants	55923	3,8	13400	1635	126	39819	775	73	95
60	Land transport; transport via pipelines	75090	5,2	33941	844	36	39176	1050	33	10
61	Water transport	815	0,1	147	82	8	443	64	70	1
62	Air transport	288	0,0	17			216	45	10	
63	Supporting and auxiliary transport activities; activities of travel agencies	9603	0,7	601	220	14	8229	432	96	11
64	Post and telecommunications	6281	0,4	438	11	1	5526	291	11	3
65	Financial intermediation, except insurance and pension funding	5783	0,4	143	15		2480	2110	2	1033
66	Insurance and pension funding, except compulsory social security	1956	0,1	608	1		504	842		1
67	Activities auxiliary to financial intermediation	6158	0,4	1239	6	2	4626	277		8
70	Real estate activities	18046	1,2	665	28	9	16769	551	17	7
71	Renting of machinery and equipment without operator and of personal and household goods	3023	0,2	607	116	8	2128	93	70	1
72	Computer and related activities	20122	1,4	3326	119	13	16277	382	2	3
73	Research and development	1624	0,1	235	11	2	1161	170	43	2
74	Other business activities	96040	6,6	19517	789	73	73881	1613	106	60
75	Public administration and defence; compulsory social security	358	0,0	89	5		216	26	21	1
80	Education	6034	0,4	3092	62	5	2810	65		
85	Health and social work	15182	1,0	2077	233	15	12772	81	3	1
90	Sewage and refuse disposal, sanitation and similar activities	799	0,1	82	13	2	579	103	18	
91	Activities of membership organizations n.e.c.	210	0,0	92	1		99	15		3
92	Recreational, cultural and sporting activities	14389	1,0	3420	202	14	10382	290	69	12
93	Other service activities	23606	1,6	9893	418	42	12745	305	76	126
95	Activities of households as employers of domestic staff	731	0,1	431	6	1	289	3		1
96	Extra-territorial organizations and bodies	7	0,0	7						

**)Field of activity declared when registered, according to CAEN classification*

Table no. 7

**Operations carried on with the Trade Registers,
by counties and categories,
in March 2006**

County	Total of operations carried on		out of which:							
			New incorporations		Changes in statutory documents		out of which: of liquidation, dissolution		Strike off companies	
	No.	%	No.	%	No.	%	No.	%	No.	%
0	1	2	3	4	5	6	7	8	9	10
Total ROMÂNIA	175928	100,0	14410	8,2	132019	75,0	4404	2,5	29499	16,8
ALBA	1802	100,0	280	15,5	1486	82,5	4	0,2	36	2,0
ARAD	4747	100,0	404	8,5	3937	82,9	10	0,2	406	8,6
ARGES	3178	100,0	319	10,0	2523	79,4	106	3,3	336	10,6
BACAU	3701	100,0	325	8,8	3299	89,1	224	6,1	77	2,1
BIHOR	2683	100,0	548	20,4	2053	76,5	36	1,3	82	3,1
BISTRITA-NASAUD	4061	100,0	174	4,3	2752	67,8	101	2,5	1135	27,9
BOTOSANI	1908	100,0	233	12,2	1629	85,4	1	0,1	46	2,4
BRASOV	8267	100,0	412	5,0	5384	65,1	33	0,4	2471	29,9
BRAILA	1350	100,0	192	14,2	1117	82,7	14	1,0	41	3,0
BUZAU	9152	100,0	282	3,1	5328	58,2	491	5,4	3542	38,7
CARAS-SEVERIN	1871	100,0	191	10,2	1258	67,2	17	0,9	422	22,6
CALARASI	996	100,0	127	12,8	851	85,4	7	0,7	18	1,8
CLUJ	5639	100,0	679	12,0	4883	86,6	57	1,0	77	1,4
CONSTANTA	4064	100,0	561	13,8	3380	83,2	13	0,3	123	3,0
COVASNA	2816	100,0	125	4,4	1866	66,3	2	0,1	825	29,3
DAMBOVITA	4717	100,0	252	5,3	3072	65,1	292	6,2	1393	29,5
DOLJ	8025	100,0	368	4,6	5207	64,9	17	0,2	2450	30,5
GALATI	3237	100,0	316	9,8	2858	88,3	184	5,7	63	1,9
GIURGIU	1290	100,0	111	8,6	1166	90,4	8	0,6	13	1,0
GORJ	1797	100,0	172	9,6	1609	89,5	11	0,6	16	0,9
HARGHITA	5247	100,0	273	5,2	3429	65,4	102	1,9	1545	29,4
HUNEDOARA	2529	100,0	279	11,0	2228	88,1	4	0,2	22	0,9
IALOMITA	2675	100,0	121	4,5	1764	65,9			790	29,5
IASI	8170	100,0	484	5,9	5790	70,9	54	0,7	1896	23,2
MARAMURES	3439	100,0	415	12,1	2882	83,8	146	4,2	142	4,1
MEHEDINTI	1428	100,0	150	10,5	960	67,2	4	0,3	318	22,3
MURES	3954	100,0	383	9,7	3472	87,8	571	14,4	99	2,5
NEAMT	4798	100,0	268	5,6	3991	83,2	105	2,2	539	11,2
OLT	1219	100,0	190	15,6	988	81,1	28	2,3	41	3,4
PRAHOVA	6067	100,0	494	8,1	4467	73,6	629	10,4	1106	18,2
SALAJ	2380	100,0	178	7,5	1542	64,8	45	1,9	660	27,7
SATU MARE	2916	100,0	229	7,9	2173	74,5	183	6,3	514	17,6
SIBIU	2100	100,0	279	13,3	1717	81,8	18	0,9	104	5,0
SUCEAVA	2909	100,0	362	12,4	2476	85,1	271	9,3	71	2,4
TELEORMAN	2395	100,0	155	6,5	2038	85,1	88	3,7	202	8,4
TIMIS	4421	100,0	662	15,0	3731	84,4	12	0,3	28	0,6
TULCEA	1380	100,0	202	14,6	1139	82,5	184	13,3	39	2,8
VASLUI	2757	100,0	177	6,4	1982	71,9	1	0,0	598	21,7
VALCEA	5743	100,0	220	3,8	3530	61,5	6	0,1	1993	34,7
VRANCEA	3983	100,0	168	4,2	2544	63,9	7	0,2	1271	31,9
MUN. BUCURESTI	26235	100,0	2341	8,9	21023	80,1	315	1,2	2871	10,9
ILFOV	3882	100,0	309	8,0	2495	64,3	3	0,1	1078	27,8

*) by effect of implementation of Law no. 314/2001, art.1 and art. 6

*** Less than 0,01%

Table no. 8

**The number of incorporations in the Trade Register,
by counties and sources of capital,
in March 2006**

County	Total		out of which:					Rnking by: *	
			Private capital			State majority capital			Mixed capital (state+private)
			out of which:			out of which:			Companies
			PF+AF	Companies	OC	RA	Companies		Companies
No.	%	No.	No.	No.	No.	No.	No.		
0	1	2	3	4	5	6	7	8	9
Total ROMÂNIA	14410	100,0	5293	9112	1	2	1	1	X
ALBA	280	1,9	140	140					19
ARAD	404	2,8	178	226					10
ARGES	319	2,2	125	194					15
BACAU	325	2,3	158	167					14
BIHOR	548	3,8	246	301		1			5
BISTRITA-NASAUD	174	1,2	70	104					34
BOTOSANI	233	1,6	140	93					25
BRASOV	412	2,9	119	293					9
BRAILA	192	1,3	58	134					29
BUZAU	282	2,0	135	147					18
CARAS-SEVERIN	191	1,3	88	103					30
CALARASI	127	0,9	51	76					39
CLUJ	679	4,7	230	449					2
CONSTANTA	561	3,9	144	417					4
COVASNA	125	0,9	71	54					40
DAMBOVITA	252	1,7	123	129					24
DOLJ	368	2,6	143	225					12
GALATI	316	2,2	112	204					16
GIURGIU	111	0,8	49	62					42
GORJ	172	1,2	82	90					35
HARGHITA	273	1,9	160	113					22
HUNEDOARA	279	1,9	93	186					20
IALOMITA	121	0,8	57	64					41
IASI	484	3,4	161	323					7
MARAMURES	415	2,9	189	226					8
MEHEDINTI	150	1,0	80	70					38
MURES	383	2,7	165	217	1				11
NEAMT	268	1,9	133	135					23
OLT	190	1,3	88	102					31
PRAHOVA	494	3,4	184	310					6
SALAJ	178	1,2	94	84					32
SATU MARE	229	1,6	95	134					26
SIBIU	279	1,9	109	169		1			21
SUCEAVA	362	2,5	219	143					13
TELEORMAN	155	1,1	74	79			1	1	37
TIMIS	662	4,6	208	454					3
TULCEA	202	1,4	151	51					28
VASLUI	177	1,2	88	89					33
VALCEA	220	1,5	118	102					27
VRANCEA	168	1,2	65	103					36
MUN. BUCURESTI	2341	16,2	267	2074					1
ILFOV	309	2,1	33	276					17

*) The total number of incorporations (col 1)

*** Less than 0,01%

Table no.9

**The number of incorporations in the Trade Register,
by counties and category
in March 2006**

County	Total		out of which:						
			PF+AF	companies: 9114				RA	OC
	SNC	SCS		SRL	SA	No.	No.		
	No.	%	No.	No.	No.			No.	No.
0	1	2	3	4	5	6	7	8	9
Total ROMÂNIA	14410	100,0	5293		2	9064	48	2	1
ALBA	280	1,9	140			139	1		
ARAD	404	2,8	178			225	1		
ARGES	319	2,2	125			191	3		
BACAU	325	2,3	158			167			
BIHOR	548	3,8	246			301		1	
BISTRITA-NASAUD	174	1,2	70			103	1		
BOTOSANI	233	1,6	140			93			
BRASOV	412	2,9	119			293			
BRAILA	192	1,3	58			132	2		
BUZAU	282	2,0	135			145	2		
CARAS-SEVERIN	191	1,3	88			103			
CALARASI	127	0,9	51			76			
CLUJ	679	4,7	230			448	1		
CONSTANTA	561	3,9	144			414	3		
COVASNA	125	0,9	71			53	1		
DAMBOVITA	252	1,7	123			129			
DOLJ	368	2,6	143			225			
GALATI	316	2,2	112			204			
GIURGIU	111	0,8	49			62			
GORJ	172	1,2	82			89	1		
HARGHITA	273	1,9	160			113			
HUNEDOARA	279	1,9	93			186			
IALOMITA	121	0,8	57			64			
IASI	484	3,4	161			321	2		
MARAMURES	415	2,9	189			226			
MEHEDINTI	150	1,0	80			70			
MURES	383	2,7	165			216	1		1
NEAMT	268	1,9	133			134	1		
OLT	190	1,3	88			101	1		
PRAHOVA	494	3,4	184		2	306	2		
SALAJ	178	1,2	94			84			
SATU MARE	229	1,6	95			134			
SIBIU	279	1,9	109			168	1	1	
SUCEAVA	362	2,5	219			142	1		
TELEORMAN	155	1,1	74			81			
TIMIS	662	4,6	208			453	1		
TULCEA	202	1,4	151			50	1		
VASLUI	177	1,2	88			88	1		
VALCEA	220	1,5	118			102			
VRANCEA	168	1,2	65			103			
MUN. BUCURESTI	2341	16,2	267			2055	19		
ILFOV	309	2,1	33			275	1		

Table no. 10

**The number of incorporations in the Trade Register, by field of activity*
and categories in March 2006**

CAEN segment	Field of activity	Total		out of which:						RA	OC
				PF+AF	companies: 9114						
		SNC	SCS		SRL	SA	No.	No.			
		No.	No.		No.	No.			No.	No.	
0	1	2	3	4	5	6	7	8	9	10	
	Total ROMÂNIA	14410	100,0	5293		2	9064	48	2	1	
1	Agriculture, hunting and related service activities	1373	9,5	864			507	2			
2	Forestry, logging and related service activities	78	0,5	17			59		2		
5	Fishing, fish farming and related service activities	128	0,9	99			29				
10	Mining of coal and lignite; extraction of peat										
11	Extraction of crude petroleum and natural gas; service activities incidental to oil and gas extraction, excluding surveying	4	0,0				3	1			
12	Mining of uranium and thorium ores										
13	Mining of metal ores	1	0,0				1				
14	Other mining and quarrying	24	0,2	2			22				
15	Manufacture of food products and beverages	203	1,4	95			107	1			
16	Manufacture of tobacco products										
17	Manufacture of textiles	41	0,3	16			25				
18	Manufacture of wearing apparel; dressing and dyeing of fur	100	0,7	30			70				
19	Tanning and dressing of leather; manufacture of luggage, handbags, saddlery, harness and footwear	26	0,2	10			16				
20	Manufacture of wood and of products of wood and cork, except furniture; manufacture of articles of straw and plaiting materials	191	1,3	104			87				
21	Manufacture of pulp, paper and paper products	10	0,1	1			9				
22	Publishing, printing and reproduction of recorded media	73	0,5	8			64	1			
23	Manufacture of coke, refined petroleum products and nuclear fuel	1	0,0				1				
24	Manufacture of chemicals and chemical products	12	0,1	1			11				
25	Manufacture of rubber and plastic products	42	0,3	3			39				
26	Manufacture of other non-metallic mineral products	94	0,7	37			57				
27	Manufacture of basic metals	6	0,0				6				
28	Manufacture of fabricated metal products, except machinery and equipment	206	1,4	94			111	1			
29	Manufacture of machinery and equipment n.e.c.	17	0,1				15	2			
30	Manufacture of office machinery and computers	3	0,0				3				
31	Manufacture of electrical machinery and apparatus n.e.c.	14	0,1	1			12	1			
32	Manufacture of radio, television and communication equipment and apparatus	2	0,0				2				
33	Manufacture of medical, precision and optical instruments, watches and clocks	30	0,2	6			23	1			
34	Manufacture of motor vehicles, trailers and semi- trailers	7	0,0	1			6				
35	Manufacture of other transport equipment	20	0,1	2			18				
36	Manufacture of furniture; manufacturing n.e.c.	113	0,8	37			76				
37	Recycling	34	0,2	5			29				
40	Electricity, gas, steam and hot water supply	13	0,1				11	2			
41	Collection, purification and distribution of water	2	0,0	2							
45	Construction	1713	11,9	529			1181	3			

*)Field of activity declared when registered, according to CAEN classification

Table no. 10
(continuance)

**The number of incorporations in the Trade Register, by field of activity*
and categories in March 2006**

CAEN segment	Field of activity	Total		out of which:						
				PF+AF	companies: 9114				RA	OC
		No.	%		No.	SNC	SCS	SRL		
				No.		No.	No.	No.	No.	No.
0	1	2	3	4	5	6	7	8	9	10
	Total ROMÂNIA	14410	100,0	5293		2	9064	48	2	1
50	Sale, maintenance and repair of motor vehicles and motorcycles; retail sale of automotive fuel	356	2,5	103			253			
51	Wholesale trade and commission trade, except of motor vehicles and motorcycles	1404	9,7	343			1057	3		1
52	Retail trade, except of motor vehicles and motorcycles; repair of personal and household goods	2872	19,9	1345		1	1524	2		
55	Hotels and restaurants	649	4,5	150			494	5		
60	Land transport; transport via pipelines	786	5,5	366			419	1		
61	Water transport									
62	Air transport	3	0,0				3			
63	Supporting and auxiliary transport activities; activities of travel agencies	125	0,9	23			102			
64	Post and telecommunications	116	0,8	8			108			
65	Financial intermediation, except insurance and pension funding	35	0,2				22	13		
66	Insurance and pension funding, except compulsory social security	1	0,0				1			
67	Activities auxiliary to financial intermediation	56	0,4	3			53			
70	Real estate activities	440	3,1	13		1	424	2		
71	Renting of machinery and equipment without operator and of personal and household goods	37	0,3	11			25	1		
72	Computer and related activities	379	2,6	147			232			
73	Research and development	6	0,0	1			5			
74	Other business activities	1745	12,1	457			1284	4		
75	Public administration and defence; compulsory social security	2	0,0	2						
80	Education	63	0,4	20			43			
85	Health and social work	125	0,9	4			120	1		
90	Sewage and refuse disposal, sanitation and similar activities	13	0,1	2			11			
91	Activities of membership organizations n.e.c.									
92	Recreational, cultural and sporting activities	256	1,8	112			143	1		
93	Other service activities	338	2,3	197			141			
95	Activities of households as employers of domestic staff	14	0,1	14						
96	Extra-territorial organizations and bodies	3	0,0	3						

Table no. 11

**Number of companies registered and the amount
of subscribed capital, by county in March 2006**

County	Total registered companies		Subscribed capital		Average subscribed capital on company
	No.	%	mii RON	%	mii RON
0	1	2	3	4	5
Total ROMÂNIA	9114	100,0	327064,7	100,0	36,0
ALBA	140	1,5	237,8	0,1	1,7
ARAD	226	2,5	120,8	0,0	0,5
ARGES	194	2,1	32561,2	10,0	167,8
BACAU	167	1,8	184,2	0,1	1,1
BIHOR	301	3,3	458,4	0,1	1,5
BISTRITA-NASAUD	104	1,1	372,3	0,1	3,6
BOTOSANI	93	1,0	168,4	0,1	1,8
BRASOV	293	3,2	7122,0	2,2	24,4
BRAILA	134	1,5	80,8	0,0	0,6
BUZAU	147	1,6	1238,1	0,4	8,5
CARAS-SEVERIN	103	1,1	46,4	0,0	0,5
CALARASI	76	0,8	164,4	0,1	2,2
CLUJ	449	4,9	2238,4	0,7	5,0
CONSTANTA	417	4,6	1122,3	0,3	2,7
COVASNA	54	0,6	84,1	0,0	1,6
DAMBOVITA	129	1,4	47,0	0,0	0,4
DOLJ	225	2,5	120,9	0,0	0,5
GALATI	204	2,2	138,9	0,0	0,7
GIURGIU	62	0,7	40,4	0,0	0,7
GORJ	90	1,0	2324,2	0,7	25,8
HARGHITA	113	1,2	140,5	0,0	1,2
HUNEDOARA	186	2,0	72,3	0,0	0,4
IALOMITA	64	0,7	46,3	0,0	0,7
IASI	323	3,5	365,7	0,1	1,1
MARAMURES	226	2,5	105,3	0,0	0,5
MEHEDINTI	70	0,8	26,3	***	0,4
MURES	217	2,4	336,5	0,1	1,6
NEAMT	135	1,5	52,9	0,0	0,4
OLT	102	1,1	61,1	0,0	0,6
PRAHOVA	310	3,4	121320,2	37,1	395,2
SALAJ	84	0,9	63,8	0,0	0,8
SATU MARE	134	1,5	2288,5	0,7	17,2
SIBIU	169	1,9	361,9	0,1	2,2
SUCEAVA	143	1,6	110,5	0,0	0,8
TELEORMAN	81	0,9	677,9	0,2	8,4
TIMIS	454	5,0	1345,8	0,4	3,0
TULCEA	51	0,6	84,8	0,0	1,7
VASLUI	89	1,0	126,8	0,0	1,4
VALCEA	102	1,1	103,4	0,0	1,0
VRANCEA	103	1,1	185,2	0,1	1,8
MUN. BUCURESTI	2074	22,8	146257,1	44,7	70,8
ILFOV	276	3,0	4061,1	1,2	14,7

Note: The average does not include filials because according to the Law no.31/1990 they are not juridical persons

*** Less than 0,01%

Table no. 12

**Number of registered companies and the amount
of subscribed capital by category,
in March 2006**

Company type	Total registered companies		Subscribed capital		Average subscribed capital on company
	No.	%	mii RON	%	mil. RON
0	1	2	3	4	5
Total ROMÂNIA	9114	100,0	327064,7	100,0	36,0
SNC					
SCS	2	0,0	120373,7	36,8	60186,8
SA	48	0,5	97995,9	30,0	3379,2
SRL	9064	99,5	108695,1	33,2	12,0
SCA					

Note: The average does not include filials because according to the Law no.31/1990 they are not juridical persons

*** Less than 0,01%

Diagram no.5

