



MINISTRY OF JUSTICE

THE NATIONAL TRADE REGISTER OFFICE

București, Bd. Unirii nr. 74, Bl. J3b, tronson II+III, sector 3; Telefon: +40 21 316.08.04, 316.08.10; Fax: +40 21 316.08.03 Cod poștal: 030837  
Website: [www.onrc.ro](http://www.onrc.ro); E-mail: [onrc@onrc.ro](mailto:onrc@onrc.ro); Cod de identificare Fiscală: 14942091; înregistrat ca operator date personale sub nr.1350

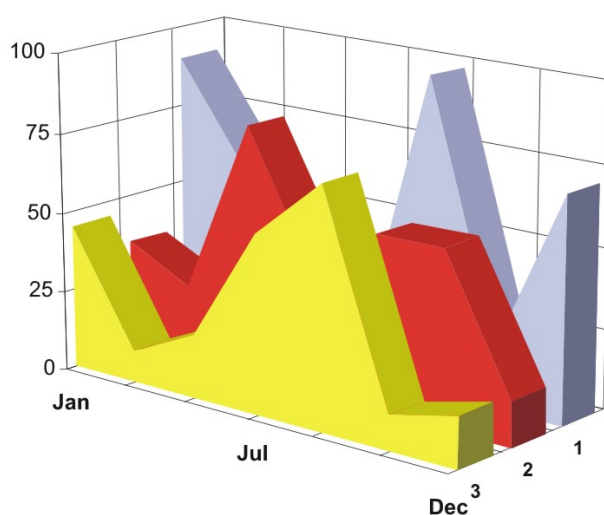
# PROCEEDINGS IN THE CENTRAL TRADE REGISTER

## STATISTICAL SYNTHESIS

OF

### RECORDS IN THE CENTRAL TRADE REGISTER

- the 28<sup>th</sup> of February 2006 - provisional data -



- ISSUE No. 171 -

**MINISTRY OF JUSTICE  
THE NATIONAL TRADE REGISTER OFFICE**

---

- Operations of incorporation of companies, changes in statutory documents and strike-off of companies are based on Law No.26/1990 reissued, Law No.31/1990, reissued, OUG No.76/2001, reissued and Methodology Norms No. P/608/1998.
  
- This paper presents the trend in operations registered in The Trade Register Office attached to the law court of Bucharest and in the Trade Register Offices attached to the law court in each county of Romania.
  
- Information recorded in the Central Trade Register concern operations compulsory by law to be registered in the trade registers within the 42 trade register offices attached to the law courts.

*• No part of the content of this publication, in original or in any modified format, may be reproduced, stored in a retrieval system, or transmitted, in any form or by any means, without the prior permission in writing of The Ministry of Justice – The National Trade Register Office.*

*• The content of this publication may be referred to in articles, studies, books, as supporting or explanatory data under the condition only, the source of the information to be clearly and precisely specified.*

# Contents

	Page
<b>1 Explanatory Note</b>	<b>1</b>
<b>2.1 Data for December 1990 – February 2006</b>	<b>3</b>
Table no.1 – Operations registered in the Trade Register, by categories during the period of December 1990 – February 2006, in total by country and counties, rate of categories of operations in total operations country	3
Table no.1.a – Operations registered in the Trade Register, by categories during the period of December 1990 – February 2006, in total by country and counties, counties' rate in total country	4
Table no. 3 – Number and structure of incorporations in the Trade Register, by years, during the period of December 1990- February 2006	5
Table no.4 – The number of incorporations in the Trade Register, by counties and sources of capital, in the period December 1990 - February 2006	6
Table no. 5 – The number of incorporations in the Trade Register, by counties and categories, during the period of December 1990 – February 2006	7
Table no. 6 – The number of incorporations in the Trade Register, by field of activity and categories, during the period of December 1990 - February 2006	8
<b>2.2 Data for February 2006</b>	<b>10</b>
Table no. 7 – Operations carried on with the Trade Registers, by counties and categories, in February 2006	10
Table no. 8 – The number of incorporations in the Trade Register, by counties and sources of capital, in February 2006	11
Table no. 9 – The number of incorporations in the Trade Register, by counties and category in February 2006	12
Table no. 10 –The number of incorporations in the Trade Register, by field of activity and categories in February 2006	13
Table no. 11 – Number of companies registered and the amount of subscribed capital, by county in February 2006	15
Table no. 12– Number of registered companies and the amount of subscribed capital by category, in February 2006	16
Diagram no. 5 – Average subscribed capital on company in February 2006	16

## Explanatory Note

The Trade Register Office is set-up by Law No. 26/1990, reissued and modified by OUG No. 129/2002, became an active institution since December 1990 and is structured in two levels:

- the national level, represented by the National Trade Register Office organised under the Ministry of Justice
- the local level, represented by the 42 trade register offices attached to the law courts and co-ordinated by the National Trade Register Office

The categories of businessmen compulsory to register in the trade register are:

- natural persons tradesmen and family associations doing usually commercial acts, commercial companies, national companies, companies under state supervision, and co-operative organisations
- subsidiaries registered as commercial companies and legal persons following the legal proceedings of set-up, activity and incorporation according to the type of the legally set-up company.

### Usual Terms:

- incorporation – represents the registration of the company in the trade registry awarding the quality of legal person.

- other statutory documents – represent the official registration of the changes occurred in a company's life, such as: changes in headquarters' address, increase or decrease of the issued capital, merger, liquidation, strike-off, etc.

- strike-off – represents the removal of a company from the trade registry, due to dissolution and liquidation, being also the very moment the company loses its quality of legal person. Data also include the companies under the provisions of Law No. 314/2001.

- change of certificate – represents the obligation of companies set-up before OGU No. 76/2001 republished came in force, to request the incorporation certificate and fiscal registration certificate to be replaced with the new registration certificate containing the given unique registration code.

The ratio of these changes is being calculated as a proportion between the effective number of changes and the number of active companies due to operate the change.

- active company from the legal point of view – a company registered in the trade register and which is not affected by any of the situations leading to the temporary or permanent loss of this status (e.g. dissolution, liquidation, strike-off)

- operations represent all the records in the trade registry including incorporations, other statutory documents and strike-off of companies, irrespective of the object of activity, company's type and origin of the subscribed capital (local or foreign investment).

• **Terms used in tables and charts**

➤ **Number of companies:** represents, depending on the specific table, the number of companies incorporated in the related period, the number of companies being struck-off from the trade registry.

➤ **Amount of the subscribed capital:**

- **total, in local currency:** the amount of the subscribed capital resulted from totalising the amount subscribed (in cash and in kind) in local currency (ROL)

➤ **Regional development:**

<i>North-East:</i>	Suceava, Botoșani, Neamț, Iași, Bacău, Vaslui.
<i>South-East:</i>	Vrancea, Galați, Buzău, Brăila, Tulcea, Constanța.
<i>South-Muntenia:</i>	Argeș, Dâmbovița, Prahova, Teleorman, Giurgiu, Călărași, Ialomița.
<i>South-West Oltenia:</i>	Gorj, Vâlcea, Dolj, Mehedinți, Olt.
<i>West:</i>	Arad, Caraș-Severin, Hunedoara, Timiș.
<i>North-West:</i>	Bihor, Bistrița, Cluj, Satu Mare, Sălaj, Maramureș.
<i>Center:</i>	Alba, Brașov, Covasna, Harghita, Mureș, Sibiu.
<i>Bucharest-Ilfov:</i>	București, Ilfov.

CAEN code – The Classification of Activities in the National Economy was approved by HG No. 656/1997, modified by Order No 601 of the President of National Institute of Statistics being compatible with the international classification used in statistic reports and official documents. Activities are ranked upon homogeneity principle by sections, divisions, groups and classes.

Common abbreviations

- **PF** - Natural Persons Tradesman
- **AF** - Family association
- **SNC** - General Partnership
- **SCS** - Limited Partnership
- **SA** - Joint stock company
- **SRL** - Limited liability company
- **RA** - Company Under State Supervision
- **OC** - Co-operative organisation

Source:

The integrated IT system of the trade registry is designed by The National Trade Registry Office according to the provisions of the related legislation in force. The source of information is the computerised system of the trade registers handled by the Trade Register Offices attached to the law courts.

Table no. 1

**Operations registered in the Trade Register, by categories  
during the period of December 1990 - February 2006 in total by country and counties,  
- rate of categories of operations in total operations/country -**

Counties	Total of registered operations		out of which :									
			Registered companies		Changes in statutory documents		out of which :				Strike off companies	
	of liquidation, dissolution						out of which :					
	No.	%	No.	%	No.	%	No.	%	No.	%	No.	%
0	1	2	3	4	5	6	7	8	9	10	11	12
<b>Total ROMÂNIA</b>	<b>6372971</b>	<b>100,0</b>	<b>1442185</b>	<b>100,0</b>	<b>4623398</b>	<b>100,0</b>	<b>9911</b>	<b>100,0</b>	<b>165855</b>	<b>100,0</b>	<b>307388</b>	<b>100,0</b>
ALBA	86984	1,4	22312	1,5	62655	1,4	371	3,7	3596	2,2	2017	0,7
ARAD	141440	2,2	34802	2,4	99938	2,2	369	3,7	2974	1,8	6700	2,2
ARGES	154370	2,4	37268	2,6	111205	2,4	197	2,0	4219	2,5	5897	1,9
BACAU	150076	2,4	36849	2,6	106560	2,3	1003	10,1	5280	3,2	6667	2,2
BIHOR	195138	3,1	42244	2,9	145407	3,1	303	3,1	4598	2,8	7487	2,4
BISTRITA-NASAUD	80048	1,3	17697	1,2	58248	1,3	72	0,7	1120	0,7	4103	1,3
BOTOSANI	58588	0,9	17868	1,2	38093	0,8	66	0,7	1563	0,9	2627	0,9
BRASOV	213297	3,3	44670	3,1	161327	3,5	149	1,5	4892	2,9	7300	2,4
BRAILA	82596	1,3	20379	1,4	60692	1,3	61	0,6	2540	1,5	1525	0,5
BUZAU	119300	1,9	26788	1,9	86913	1,9	146	1,5	2109	1,3	5599	1,8
CARAS-SEVERIN	85121	1,3	17726	1,2	60911	1,3	41	0,4	1922	1,2	6484	2,1
CALARASI	56223	0,9	14787	1,0	39111	0,8	79	0,8			2325	0,8
CLUJ	276943	4,3	65423	4,5	207400	4,5	197	2,0			4120	1,3
CONSTANTA	274766	4,3	61057	4,2	196892	4,3	926	9,3	10621	6,4	16817	5,5
COVASNA	60028	0,9	12358	0,9	44657	1,0	18	0,2	1175	0,7	3013	1,0
DAMBOVITA	100855	1,6	27032	1,9	63468	1,4	98	1,0	2951	1,8	10355	3,4
DOLJ	164609	2,6	38448	2,7	117625	2,5	215	2,2	5633	3,4	8536	2,8
GALATI	180620	2,8	34557	2,4	136975	3,0	125	1,3	5370	3,2	9088	3,0
GIURGIU	42547	0,7	11639	0,8	27670	0,6	47	0,5			3238	1,1
GORJ	85717	1,3	17433	1,2	64309	1,4	48	0,5	2667	1,6	3975	1,3
HARGHITA	90539	1,4	21383	1,5	67366	1,5	51	0,5			1790	0,6
HUNEDOARA	119203	1,9	29969	2,1	80940	1,8	126	1,3	2944	1,8	8294	2,7
IALOMITA	61846	1,0	13793	1,0	44358	1,0	78	0,8	1586	1,0	3695	1,2
IASI	218360	3,4	43676	3,0	166690	3,6	597	6,0	4224	2,5	7994	2,6
MARAMURES	126998	2,0	37329	2,6	83680	1,8	159	1,6	2924	1,8	5989	1,9
MEHEDINTI	66884	1,0	16703	1,2	44592	1,0	55	0,6	3085	1,9	5589	1,8
MURES	153786	2,4	36315	2,5	111795	2,4	83	0,8	2942	1,8	5676	1,8
NEAMT	129720	2,0	32402	2,2	89728	1,9	304	3,1	2435	1,5	7590	2,5
OLT	90577	1,4	21072	1,5	62378	1,3	21	0,2	2033	1,2	7127	2,3
PRAHOVA	227202	3,6	47369	3,3	171230	3,7	274	2,8	3934	2,4	8603	2,8
SALAJ	50695	0,8	13646	0,9	34262	0,7	29	0,3	683	0,4	2787	0,9
SATU MARE	101245	1,6	24089	1,7	70339	1,5	26	0,3	2934	1,8	6817	2,2
SIBIU	140447	2,2	27562	1,9	108495	2,3	31	0,3	2583	1,6	4390	1,4
SUCEAVA	159132	2,5	37032	2,6	109568	2,4	29	0,3	2387	1,4	12532	4,1
TELEORMAN	71464	1,1	16575	1,1	53117	1,1	49	0,5	1504	0,9	1772	0,6
TIMIS	245120	3,8	49217	3,4	186302	4,0	271	2,7	7273	4,4	9601	3,1
TULCEA	64790	1,0	14960	1,0	47178	1,0	149	1,5	1002	0,6	2652	0,9
VASLUI	75710	1,2	18861	1,3	50084	1,1	197	2,0	1385	0,8	6765	2,2
VALCEA	104894	1,6	24339	1,7	75308	1,6	138	1,4	1888	1,1	5247	1,7
VRANCEA	81675	1,3	18094	1,3	61460	1,3	51	0,5	1594	1,0	2121	0,7
MUN. BUCURESTI	1305161	20,5	275005	19,1	961028	20,8	2641	26,6	51406	31,0	69128	22,5
ILFOV	78257	1,2	21457	1,5	53444	1,2	21	0,2	1879	1,1	3356	1,1

\*) according to the effect of Law No. 314/2001, art.1 și art. 6

\*\*\* Less than 0,01%

Table no. 2

**Operations registered in the Trade Register, by categories  
during the period of December 1990 - February 2006, in total by country and counties,  
- rate of categories of operations in total operations/country -**

Counties	Total of registered operations		out of which :									
			Registered companies		Changes in statutory documents		out of which :				Strike off companies	
	of liquidation, dissolution						out of which :					
	No.	%	No.	%	No.	%	No.	%	No.	%	No.	%
0	1	2	3	4	5	6	7	8	9	10	11	12
<b>Total ROMÂNIA</b>	<b>6372971</b>	<b>100,0</b>	<b>1442185</b>	<b>22,6</b>	<b>4623398</b>	<b>72,5</b>	<b>9911</b>	<b>0,2</b>	<b>165855</b>	<b>2,6</b>	<b>307388</b>	<b>4,8</b>
ALBA	86984	100,0	22312	25,7	62655	72,0	371	0,4	3596	4,1	2017	2,3
ARAD	141440	100,0	34802	24,6	99938	70,7	369	0,3	2974	2,1	6700	4,7
ARGES	154370	100,0	37268	24,1	111205	72,0	197	0,1	4219	2,7	5897	3,8
BACAU	150076	100,0	36849	24,6	106560	71,0	1003	0,7	5280	3,5	6667	4,4
BIHOR	195138	100,0	42244	21,6	145407	74,5	303	0,2	4598	2,4	7487	3,8
BISTRITA-NASAUD	80048	100,0	17697	22,1	58248	72,8	72	0,1	1120	1,4	4103	5,1
BOTOSANI	58588	100,0	17868	30,5	38093	65,0	66	0,1	1563	2,7	2627	4,5
BRASOV	213297	100,0	44670	20,9	161327	75,6	149	0,1	4892	2,3	7300	3,4
BRAILA	82596	100,0	20379	24,7	60692	73,5	61	0,1	2540	3,1	1525	1,8
BUZAU	119300	100,0	26788	22,5	86913	72,9	146	0,1	2109	1,8	5599	4,7
CARAS-SEVERIN	85121	100,0	17726	20,8	60911	71,6	41	0,0	1922	2,3	6484	7,6
CALARASI	56223	100,0	14787	26,3	39111	69,6	79	0,1			2325	4,1
CLUJ	276943	100,0	65423	23,6	207400	74,9	197	0,1			4120	1,5
CONSTANTA	274766	100,0	61057	22,2	196892	71,7	926	0,3	10621	3,9	16817	6,1
COVASNA	60028	100,0	12358	20,6	44657	74,4	18	0,0	1175	2,0	3013	5,0
DAMBOVITA	100855	100,0	27032	26,8	63468	62,9	98	0,1	2951	2,9	10355	10,3
DOLJ	164609	100,0	38448	23,4	117625	71,5	215	0,1	5633	3,4	8536	5,2
GALATI	180620	100,0	34557	19,1	136975	75,8	125	0,1	5370	3,0	9088	5,0
GIURGIU	42547	100,0	11639	27,4	27670	65,0	47	0,1			3238	7,6
GORJ	85717	100,0	17433	20,3	64309	75,0	48	0,1	2667	3,1	3975	4,6
HARGHITA	90539	100,0	21383	23,6	67366	74,4	51	0,1			1790	2,0
HUNEDOARA	119203	100,0	29969	25,1	80940	67,9	126	0,1	2944	2,5	8294	7,0
IALOMITA	61846	100,0	13793	22,3	44358	71,7	78	0,1	1586	2,6	3695	6,0
IASI	218360	100,0	43676	20,0	166690	76,3	597	0,3	4224	1,9	7994	3,7
MARAMURES	126998	100,0	37329	29,4	83680	65,9	159	0,1	2924	2,3	5989	4,7
MEHEDINTI	66884	100,0	16703	25,0	44592	66,7	55	0,1	3085	4,6	5589	8,4
MURES	153786	100,0	36315	23,6	111795	72,7	83	0,1	2942	1,9	5676	3,7
NEAMT	129720	100,0	32402	25,0	89728	69,2	304	0,2	2435	1,9	7590	5,9
OLT	90577	100,0	21072	23,3	62378	68,9	21	0,0	2033	2,2	7127	7,9
PRAHOVA	227202	100,0	47369	20,8	171230	75,4	274	0,1	3934	1,7	8603	3,8
SALAJ	50695	100,0	13646	26,9	34262	67,6	29	0,1	683	1,3	2787	5,5
SATU MARE	101245	100,0	24089	23,8	70339	69,5	26	0,0	2934	2,9	6817	6,7
SIBIU	140447	100,0	27562	19,6	108495	77,2	31	0,0	2583	1,8	4390	3,1
SUCEAVA	159132	100,0	37032	23,3	109568	68,9	29	0,0	2387	1,5	12532	7,9
TELEORMAN	71464	100,0	16575	23,2	53117	74,3	49	0,1	1504	2,1	1772	2,5
TIMIS	245120	100,0	49217	20,1	186302	76,0	271	0,1	7273	3,0	9601	3,9
TULCEA	64790	100,0	14960	23,1	47178	72,8	149	0,2	1002	1,5	2652	4,1
VASLUI	75710	100,0	18861	24,9	50084	66,2	197	0,3	1385	1,8	6765	8,9
VALCEA	104894	100,0	24339	23,2	75308	71,8	138	0,1	1888	1,8	5247	5,0
VRANCEA	81675	100,0	18094	22,2	61460	75,2	51	0,1	1594	2,0	2121	2,6
MUN. BUCURESTI	1305161	100,0	275005	21,1	961028	73,6	2641	0,2	51406	3,9	69128	5,3
ILFOV	78257	100,0	21457	27,4	53444	68,3	21	0,0	1879	2,4	3356	4,3

\*) according to the effect of Law No. 314/2001, art.1 și art. 6

\*\*\* Less than 0,01%

Table no.3

Number and structure of incorporations in the Trade Register, by years, during the period of December 1990 - February 2006

Period (year, month)	Registered companies		Percentage	
	No.		%	%
0	1	2	3	
<b>Total, 31 February 2006, out of which</b>	<b>1442185</b>	<b>89,09</b>		
Year 1990	81	0,01		
Year 1991	95840	6,65		
Year 1992	137456	9,53		
Year 1993	117078	8,12		
Year 1994	137445	9,53		
Year 1995	65479	4,54		
Year 1996	62089	4,31		
Year 1997	55663	3,86		
Year 1998	63878	4,43		
Year 1999	57197	3,97		
Year 2000	57291	3,97		
Year 2001	61265	4,25		
Year 2002	84780	5,88		
Year 2003	123582	8,57		
Year 2004	144284	10,00		
Year 2005	157375			
<b>Year 2006 (I - XII) out of which :</b>	<b>21402</b>			<b>158,9</b>
January	8797	1,48		100,0
February	12605			

Note: Column 2 reveals the annual structure of incorporations; column 3 reveals the structure by months during the current year.

\*\*\* Less than 0,01%

Diagram no.1

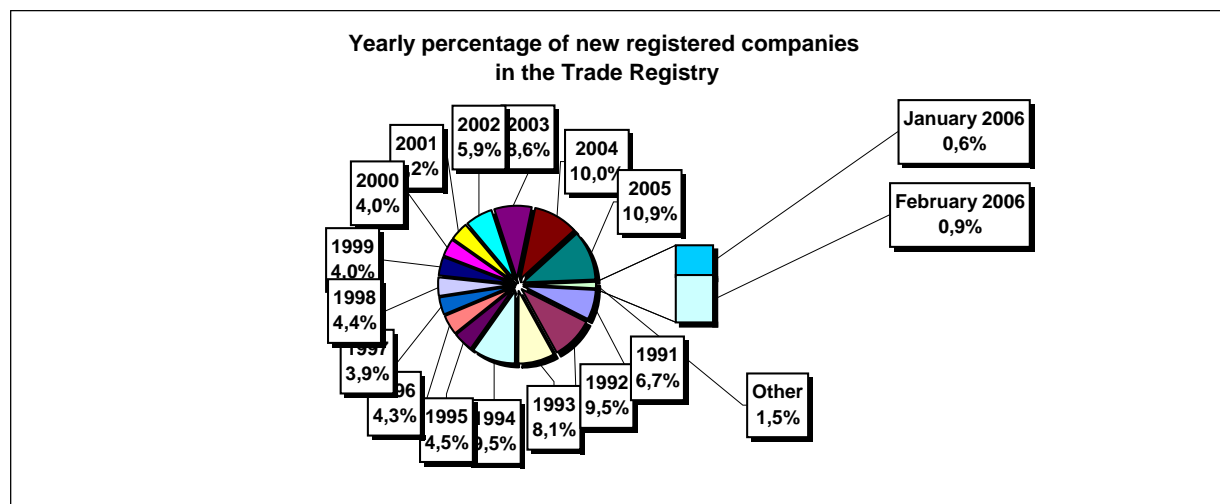


Table no. 4

**The number of incorporations in the Trade Register, by counties and sources of capital, in the period December 1990 - February 2006**

Counties	Total		out of which:					Ranking by: *	
			Private capital			State majority capital			Mixed capital (state+private)
			out of which:			out of which:			
			PF+AF	Companies	OC	RA	Companies		Companies
No.	%	No.	No.	No.	No.	No.	No.		
0	1	2	3	4	5	6	7	8	9
<b>Total ROMÂNIA</b>	<b>1442185</b>	<b>100,0</b>	<b>364299</b>	<b>1060251</b>	<b>5390</b>	<b>1326</b>	<b>2359</b>	<b>8560</b>	<b>X</b>
ALBA	22312	1,5	7583	14336	141	35	47	170	24
ARAD	34803	2,4	13375	20872	157	26	40	333	15
ARGES	37268	2,6	12094	24796	168	29	29	152	11
BACAU	36849	2,6	12226	24165	158	35	42	223	13
BIHOR	42244	2,9	8599	33094	146	36	62	307	8
BISTRITA-NASAUD	17697	1,2	6295	11147	98	19	29	109	33
BOTOSANI	17868	1,2	7968	9466	122	21	172	119	31
BRASOV	44670	3,1	8909	35350	114	41	87	169	6
BRAILA	20379	1,4	5031	15016	96	28	43	165	28
BUZAU	26788	1,9	7662	18785	142	26	42	131	21
CARAS-SEVERIN	17726	1,2	6162	11227	102	33	65	137	32
CALARASI	14787	1,0	4292	10219	86	18	77	95	38
CLUJ	65423	4,5	16085	48835	150	52	40	261	2
CONSTANTA	61057	4,2	11526	48688	203	51	49	540	3
COVASNA	12358	0,9	4037	8089	67	24	32	109	41
DAMBOVITA	27032	1,9	12504	14138	134	29	75	152	20
DOLJ	38448	2,7	7374	30613	162	40	57	202	9
GALATI	34557	2,4	6515	27683	135	30	51	143	16
GIURGIU	11639	0,8	2700	8619	80	21	109	110	42
GORJ	17433	1,2	3908	13108	184	50	83	100	34
HARGHITA	21383	1,5	8076	12927	85	23	43	229	26
HUNEDOARA	29969	2,1	7857	21620	81	37	92	282	18
IALOMITA	13793	1,0	5323	8244	74	15	46	91	39
IASI	43676	3,0	11765	31299	164	34	70	344	7
MARAMURES	37329	2,6	15305	21703	122	37	39	123	10
MEHEDINTI	16703	1,2	5146	11332	82	19	26	98	35
MURES	36315	2,5	13396	22534	154	30	34	167	14
NEAMT	32402	2,2	11895	20122	161	29	30	165	17
OLT	21072	1,5	8429	12269	161	26	64	123	27
PRAHOVA	47369	3,3	14240	32563	177	50	68	271	5
SALAJ	13646	0,9	5274	8156	107	19	28	62	40
SATU MARE	24089	1,7	7612	16194	88	19	42	134	23
SIBIU	27562	1,9	6524	20623	118	31	108	158	19
SUCEAVA	37032	2,6	17706	18810	202	30	64	220	12
TELEORMAN	16575	1,1	5646	10532	152	21	43	181	36
TIMIS	49217	3,4	7421	41206	140	37	68	345	4
TULCEA	14960	1,0	4843	9779	66	18	42	212	37
VASLUI	18861	1,3	9278	9282	109	16	41	135	29
VALCEA	24339	1,7	9591	14390	168	40	37	113	22
VRANCEA	18094	1,3	5456	12377	104	16	27	114	30
MUN. BUCURESTI	275004	19,1	15993	257550	138	115	103	1105	1
ILFOV	21457	1,5	2678	18493	92	20	13	161	25

\*) The total number of incorporations (col 1)

\*\*\* Less than 0,01%

Table no. 5

**The number of incorporations in the Trade Register,  
by counties and categories, during the period of  
December 1990 - February 2006**

County	Total		out of which:						
			PF+AF	companies: 1071170				RA	OC
	No.	%		No.	SNC	SCS	SRL		
			No.		No.	No.	No.	No.	No.
0	1	2	3	4	5	6	7	8	9
<b>Total ROMÂNIA</b>	<b>1442185</b>	<b>100,0</b>	<b>364299</b>	<b>32643</b>	<b>1558</b>	<b>1005854</b>	<b>31109</b>	<b>1326</b>	<b>5390</b>
ALBA	22312	1,5	7583	888	11	13115	539	35	141
ARAD	34802	2,4	13375	53	10	20530	650	26	157
ARGES	37268	2,6	12094	107	14	24066	790	29	168
BACAU	36849	2,6	12226	1299	4	22423	703	35	158
BIHOR	42244	2,9	8599	125	47	32415	876	36	146
BISTRITA-NASAUD	17697	1,2	6295	146	21	10715	403	19	98
BOTOSANI	17868	1,2	7968	468	1	8847	441	21	122
BRASOV	44670	3,1	8909	239	19	34532	816	41	114
BRAILA	20379	1,4	5031	376	12	14336	500	28	96
BUZAU	26788	1,9	7662	3747	46	14620	545	26	142
CARAS-SEVERIN	17726	1,2	6162	117	8	10849	455	33	102
CALARASI	14787	1,0	4292	609	3	9436	343	18	86
CLUJ	65423	4,5	16085	2111	18	45813	1194	52	150
CONSTANTA	61057	4,2	11526	311	23	47513	1430	51	203
COVASNA	12358	0,9	4037	148	4	7787	291	24	67
DAMBOVITA	27032	1,9	12504	60	8	13821	476	29	134
DOLJ	38448	2,7	7374	1560	8	28460	844	40	162
GALATI	34557	2,4	6515	1574	6	25486	811	30	135
GIURGIU	11639	0,8	2700	35	8	8483	312	21	80
GORJ	17433	1,2	3908	29	1	12791	470	50	184
HARGHITA	21383	1,5	8076	62	6	12655	476	23	85
HUNEDOARA	29969	2,1	7857	1166	98	20079	651	37	81
IALOMITA	13793	1,0	5323	266	11	7769	335	15	74
IASI	43676	3,0	11765	506	111	30122	972	34	164
MARAMURES	37329	2,6	15305	1926	23	19341	574	37	122
MEHEDINTI	16703	1,2	5146	427	3	10706	320	19	82
MURES	36315	2,5	13396	37	34	22030	634	30	154
NEAMT	32402	2,2	11895	3293	30	16345	649	29	161
OLT	21072	1,5	8429	1611	1	10367	477	26	161
PRAHOVA	47369	3,3	14240	3122	12	28911	857	50	177
SALAJ	13646	0,9	5274	600	4	7365	277	19	107
SATU MARE	24089	1,7	7612	283	5	15629	453	19	88
SIBIU	27562	1,9	6524	775	48	19438	628	31	118
SUCEAVA	37032	2,6	17706	438	8	18081	567	30	202
TELEORMAN	16575	1,1	5646	272	399	9685	400	21	152
TIMIS	49217	3,4	7421	606	27	39777	1209	37	140
TULCEA	14960	1,0	4843	1363	114	8092	464	18	66
VASLUI	18861	1,3	9278	90	11	8964	393	16	109
VALCEA	24339	1,7	9591	363	6	13706	465	40	168
VRANCEA	18094	1,3	5456	356	10	11715	437	16	104
MUN. BUCURESTI	275005	19,1	15993	1030	295	251012	6421	115	138
ILFOV	21457	1,5	2678	49	30	18027	561	20	92

Table no. 6

**The number of incorporations in the Trade Register, by field of activity\*  
during the period of December 1990 - February 2006**

CAEN segment	Field of activity	Total		out of which:						
				PF+AF	companies: 1071170				RA	OC
		No.	%		No.	SNC	SCS	SRL		
				No.		No.	No.	No.	No.	No.
0	1	2	3	4	5	6	7	8	9	10
	<b>Total ROMÂNIA</b>	<b>1442185</b>	<b>100,0</b>	<b>364299</b>	<b>32643</b>	<b>1558</b>	<b>1005854</b>	<b>31109</b>	<b>1326</b>	<b>5390</b>
1	Agriculture, hunting and related service activities	56742	3,9	11752	2024	44	38984	3770	51	117
2	Forestry, logging and related service activities	7688	0,5	976	152	3	6249	220	80	8
5	Fishing, fish farming and related service activities	2431	0,2	1313	17	3	1045	53		
10	Mining of coal and lignite; extraction of peat	107	0,0	2			70	31	4	
11	Extraction of crude petroleum and natural gas; service activities incidental to oil and gas extraction, excluding surveying	314	0,0	3	1		143	121	46	
12	Mining of uranium and thorium ores	133	0,0	32			95	6		
13	Mining of metal ores	522	0,0	163			296	55	8	
14	Other mining and quarrying	1416	0,1	105	9	1	1131	167	2	1
15	Manufacture of food products and beverages	71827	5,0	13718	3260	149	52607	1840	5	248
16	Manufacture of tobacco products	285	0,0	47			206	31	1	
17	Manufacture of textiles	11373	0,8	2274	556	16	7977	405		145
18	Manufacture of wearing apparel; dressing and dyeing of fur	20065	1,4	4503	875	38	13987	356	1	305
19	Tanning and dressing of leather; manufacture of luggage, handbags, saddlery, harness and footwear	5062	0,4	869	112	6	3900	123	1	51
20	Manufacture of wood and of products of wood and cork, except furniture; manufacture of articles of straw and plaiting materials	23737	1,6	8278	575	29	14309	495	9	42
21	Manufacture of pulp, paper and paper products	1682	0,1	109	21	1	1441	97		13
22	Publishing, printing and reproduction of recorded media	11190	0,8	895	317	21	9533	400	14	10
23	Manufacture of coke, refined petroleum products and nuclear fuel	252	0,0	24			192	34	2	
24	Manufacture of chemicals and chemical products	3561	0,2	115	89	1	2968	376	6	6
25	Manufacture of rubber and plastic products	5819	0,4	545	313	7	4673	256		24
26	Manufacture of other non-metallic mineral products	8419	0,6	2538	212	6	5266	379	5	13
27	Manufacture of basic metals	2381	0,2	166	39	3	1957	206	3	7
28	Manufacture of fabricated metal products, except machinery and equipment	15511	1,1	3528	361	23	10808	718	11	62
29	Manufacture of machinery and equipment n.e.c.	3640	0,3	99	44	7	3048	418	19	5
30	Manufacture of office machinery and computers	1742	0,1	15	25	4	1618	80		
31	Manufacture of electrical machinery and apparatus n.e.c.	1834	0,1	104	44	6	1531	143		6
32	Manufacture of radio, television and communication equipment and apparatus	827	0,1	53	14	4	682	73		1
33	Manufacture of medical, precision and optical instruments, watches and clocks	2359	0,2	572	17	2	1666	98		4
34	Manufacture of motor vehicles, trailers and semi-trailers	868	0,1	29	31	3	681	122		2
35	Manufacture of other transport equipment	1774	0,1	262	86	7	1223	121	73	2
36	Manufacture of furniture; manufacturing n.e.c.	14450	1,0	4097	284	16	9557	333	5	158
37	Recycling	4520	0,3	401	51	5	3890	172		1
40	Electricity, gas, steam and hot water supply	2814	0,2	834	3	1	1387	501	88	
41	Collection, purification and distribution of water	3523	0,2	1616	2		1644	188	73	
45	Construction	77505	5,4	20524	611	42	53804	2394	53	77

\*)Field of activity declared when registered, according to CAEN classification

**Table no. 6**  
(continuing)

**The number of incorporations in the Trade Register, by field of activity\*  
and categories, during the period of December 1990 - February 2006**

CAEN segment	Field of activity	Total		out of which:						
				PF+AF	companies: 1071170				RA	OC
					SNC	SCS	SRL	SA		
					No.	No.	No.	No.		
0	1	2	3	4	5	6	7	8	9	10
	<b>Total ROMÂNIA</b>	<b>1442185</b>	<b>100,0</b>	<b>364299</b>	<b>32643</b>	<b>1558</b>	<b>1005854</b>	<b>31109</b>	<b>1326</b>	<b>5390</b>
50	Sale, maintenance and repair of motor vehicles and motorcycles; retail sale of automotive fuel	50881	3,5	7829	1244		40704	1022	6	42
51	Wholesale trade and commission trade, except of motor vehicles and motorcycles	191138	13,3	15614	4523	150	167268	3267	35	281
52	Retail trade, except of motor vehicles and motorcycles; repair of personal and household goods	476860	33,1	167727	11914	556	291796	2481	5	2380
55	Hotels and restaurants	55274	3,8	13250	1635	126	39325	770	73	95
60	Land transport; transport via pipelines	74304	5,2	33575	844	36	38757	1049	33	10
61	Water transport	815	0,1	147	82	8	443	64	70	1
62	Air transport	285	0,0	17			213	45	10	
63	Supporting and auxiliary transport activities; activities of travel agencies	9478	0,7	578	220	14	8127	432	96	11
64	Post and telecommunications	6165	0,4	430	11	1	5418	291	11	3
65	Financial intermediation, except insurance and pension funding	5748	0,4	143	15		2458	2097	2	1033
66	Insurance and pension funding, except compulsory social security	1955	0,1	608	1		503	842		1
67	Activities auxiliary to financial intermediation	6102	0,4	1236	6	2	4573	277		8
70	Real estate activities	17606	1,2	652	28	8	16345	549	17	7
71	Renting of machinery and equipment without operator and of personal and household goods	2986	0,2	596	116	8	2103	92	70	1
72	Computer and related activities	19743	1,4	3179	119	13	16045	382	2	3
73	Research and development	1618	0,1	234	11	2	1156	170	43	2
74	Other business activities	94295	6,5	19060	789	73	72597	1609	106	60
75	Public administration and defence; compulsory social security	356	0,0	87	5		216	26	21	1
80	Education	5971	0,4	3072	62	5	2767	65		
85	Health and social work	15057	1,0	2073	233	15	12652	80	3	1
90	Sewage and refuse disposal, sanitation and similar activities	786	0,1	80	13	2	568	103	18	
91	Activities of membership organizations n.e.c.	210	0,0	92	1		99	15		3
92	Recreational, cultural and sporting activities	14133	1,0	3308	202	14	10239	289	69	12
93	Other service activities	23268	1,6	9696	418	42	12604	305	76	126
95	Activities of households as employers of domestic staff	717	0,0	417	6	1	289	3		1
96	Extra-territorial organizations and bodies	4	0,0	4						

\*)Field of activity declared when registered, according to CAEN classification

Table no. 7

**Operations carried on with the Trade Registers,  
by counties and categories,  
in February 2006**

County	Total of operations carried on		out of which:							
			New incorporations		Changes in statutory documents		out of which: of liquidation, dissolution		Strike off companies	
	No.	%	No.	%	No.	%	No.	%	No.	%
0	1	2	3	4	5	6	7	8	9	10
<b>Total ROMÂNIA</b>	<b>77262</b>	<b>100,0</b>	<b>12605</b>	<b>16,3</b>	<b>61695</b>	<b>79,9</b>	<b>4263</b>	<b>5,5</b>	<b>2962</b>	<b>3,8</b>
ALBA	1027	100,0	233	22,7	751	73,1	73	7,1	43	4,2
ARAD	1737	100,0	358	20,6	1301	74,9	14	0,8	78	4,5
ARGES	1544	100,0	329	21,3	1168	75,6	67	4,3	47	3,0
BACAU	1861	100,0	295	15,9	1500	80,6	149	8,0	66	3,5
BIHOR	1942	100,0	398	20,5	1478	76,1	13	0,7	66	3,4
BISTRITA-NASAUD	752	100,0	150	19,9	579	77,0	5	0,7	23	3,1
BOTOSANI	761	100,0	136	17,9	587	77,1	1	0,1	38	5,0
BRASOV	2851	100,0	413	14,5	2322	81,4	82	2,9	116	4,1
BRAILA	1144	100,0	138	12,1	957	83,7	17	1,5	49	4,3
BUZAU	1618	100,0	195	12,1	1309	80,9	296	18,3	114	7,0
CARAS-SEVERIN	676	100,0	167	24,7	491	72,6	8	1,2	18	2,7
CALARASI	553	100,0	122	22,1	417	75,4	5	0,9	14	2,5
CLUJ	3612	100,0	675	18,7	2829	78,3	148	4,1	108	3,0
CONSTANTA	2753	100,0	481	17,5	2102	76,4	34	1,2	170	6,2
COVASNA	687	100,0	124	18,0	518	75,4	5	0,7	45	6,6
DAMBOVITA	1545	100,0	223	14,4	1277	82,7	79	5,1	45	2,9
DOLJ	1377	100,0	332	24,1	1027	74,6	2	0,1	18	1,3
GALATI	2071	100,0	345	16,7	1680	81,1	119	5,7	46	2,2
GIURGIU	514	100,0	100	19,5	406	79,0	19	3,7	8	1,6
GORJ	1002	100,0	140	14,0	805	80,3	14	1,4	57	5,7
HARGHITA	1287	100,0	277	21,5	961	74,7	141	11,0	49	3,8
HUNEDOARA	1117	100,0	218	19,5	865	77,4	7	0,6	34	3,0
IALOMITA	780	100,0	118	15,1	634	81,3	1	0,1	28	3,6
IASI	2673	100,0	446	16,7	2180	81,6	19	0,7	47	1,8
MARAMURES	1381	100,0	275	19,9	998	72,3	2	0,1	108	7,8
MEHEDINTI	456	100,0	104	22,8	329	72,1	5	1,1	23	5,0
MURES	2021	100,0	303	15,0	1619	80,1	527	26,1	99	4,9
NEAMT	2355	100,0	257	10,9	2060	87,5	123	5,2	38	1,6
OLT	807	100,0	173	21,4	578	71,6	1258	155,9	56	6,9
PRAHOVA	2980	100,0	394	13,2	2517	84,5	296	9,9	69	2,3
SALAJ	737	100,0	158	21,4	531	72,0	129	17,5	48	6,5
SATU MARE	1000	100,0	193	19,3	792	79,2	124	12,4	15	1,5
SIBIU	1783	100,0	268	15,0	1433	80,4	60	3,4	82	4,6
SUCEAVA	1671	100,0	329	19,7	1264	75,6	7	0,4	78	4,7
TELEORMAN	883	100,0	123	13,9	719	81,4	33	3,7	41	4,6
TIMIS	2219	100,0	500	22,5	1693	76,3	14	0,6	26	1,2
TULCEA	744	100,0	111	14,9	608	81,7	48	6,5	25	3,4
VASLUI	1798	100,0	145	8,1	1035	57,6	1	0,1	618	34,4
VALCEA	1807	100,0	199	11,0	1535	84,9	15	0,8	73	4,0
VRANCEA	1317	100,0	170	12,9	1114	84,6	18	1,4	33	2,5
MUN. BUCURESTI	16096	100,0	2210	13,7	13708	85,2	280	1,7	178	1,1
ILFOV	1323	100,0	280	21,2	1018	76,9	5	0,4	25	1,9

\*) by effect of implementation of Law no. 314/2001, art.1 and art. 6

\*\*\* Less than 0,01%

Table no. 8

**The number of incorporations in the Trade Register,  
by counties and sources of capital,  
in February 2006**

County	Total		out of which:					Rnking by: *	
			Private capital			State majority capital			Mixed capital (state+private)
			out of which:			out of which:			Companies
			PF+AF	Companies	OC	RA	Companies		Companies
No.	%	No.	No.	No.	No.	No.	No.		
0	1	2	3	4	5	6	7	8	9
<b>Total ROMÂNIA</b>	<b>12605</b>	<b>100,0</b>	<b>4273</b>	<b>8328</b>	<b>2</b>	<b>1</b>		<b>1</b>	<b>X</b>
ALBA	233	1,8	116	117					21
ARAD	358	2,8	144	214					9
ARGES	329	2,6	117	212					12
BACAU	295	2,3	98	197					15
BIHOR	398	3,2	181	217					7
BISTRITA-NASAUD	150	1,2	55	95					31
BOTOSANI	136	1,1	80	56					35
BRASOV	413	3,3	124	289					6
BRAILA	138	1,1	69	69					34
BUZAU	195	1,5	67	127		1			25
CARAS-SEVERIN	167	1,3	78	89					29
CALARASI	122	1,0	49	73					38
CLUJ	675	5,4	256	419					2
CONSTANTA	481	3,8	116	365					4
COVASNA	124	1,0	68	56					36
DAMBOVITA	223	1,8	106	117					22
DOLJ	332	2,6	121	211					11
GALATI	345	2,7	131	214					10
GIURGIU	100	0,8	31	69					42
GORJ	140	1,1	68	72					33
HARGHITA	277	2,2	184	93					17
HUNEDOARA	218	1,7	61	157					23
IALOMITA	118	0,9	65	53					39
IASI	446	3,5	139	307					5
MARAMURES	275	2,2	78	196	1				18
MEHEDINTI	104	0,8	54	50					41
MURES	303	2,4	128	175					14
NEAMT	257	2,0	104	153					20
OLT	173	1,4	83	90					27
PRAHOVA	394	3,1	136	258					8
SALAJ	158	1,3	64	94					30
SATU MARE	193	1,5	93	100					26
SIBIU	268	2,1	95	172	1				19
SUCEAVA	329	2,6	142	187					13
TELEORMAN	123	1,0	60	63					37
TIMIS	500	4,0	136	364					3
TULCEA	111	0,9	63	48					40
VASLUI	145	1,2	70	75					32
VALCEA	199	1,6	88	111					24
VRANCEA	170	1,3	69	101					28
MUN. BUCURESTI	2210	17,5	244	1965				1	1
ILFOV	280	2,2	42	238					16

\*) The total number of incorporations (col 1)

\*\*\* Less than 0,01%

Table no.9

**The number of incorporations in the Trade Register,  
by counties and category  
in February 2006**

County	Total		out of which:						RA	OC
			PF+AF	companies: 8329						
	SNC	SCS		SRL	SA	No.	No.			
	No.	%	No.	No.	No.			No.	No.	No.
0	1	2	3	4	5	6	7	8	9	
<b>Total ROMÂNIA</b>	<b>12605</b>	<b>100,0</b>	<b>4273</b>	<b>1</b>		<b>8281</b>	<b>47</b>	<b>1</b>	<b>2</b>	
ALBA	233	1,8	116			117				
ARAD	358	2,8	144			212	2			
ARGES	329	2,6	117			211	1			
BACAU	295	2,3	98			196	1			
BIHOR	398	3,2	181			217				
BISTRITA-NASAUD	150	1,2	55			94	1			
BOTOSANI	136	1,1	80			55	1			
BRASOV	413	3,3	124			288	1			
BRAILA	138	1,1	69			69				
BUZAU	195	1,5	67			127		1		
CARAS-SEVERIN	167	1,3	78			88	1			
CALARASI	122	1,0	49			73				
CLUJ	675	5,4	256			417	2			
CONSTANTA	481	3,8	116			365				
COVASNA	124	1,0	68			56				
DAMBOVITA	223	1,8	106			117				
DOLJ	332	2,6	121			210	1			
GALATI	345	2,7	131			213	1			
GIURGIU	100	0,8	31			69				
GORJ	140	1,1	68			71	1			
HARGHITA	277	2,2	184			92	1			
HUNEDOARA	218	1,7	61			156	1			
IALOMITA	118	0,9	65			50	3			
IASI	446	3,5	139			307				
MARAMURES	275	2,2	78			195	1		1	
MEHEDINTI	104	0,8	54			49	1			
MURES	303	2,4	128			175				
NEAMT	257	2,0	104			152	1			
OLT	173	1,4	83			89	1			
PRAHOVA	394	3,1	136			256	2			
SALAJ	158	1,3	64			94				
SATU MARE	193	1,5	93			100				
SIBIU	268	2,1	95			170	2		1	
SUCEAVA	329	2,6	142			187				
TELEORMAN	123	1,0	60			63				
TIMIS	500	4,0	136			361	3			
TULCEA	111	0,9	63			48				
VASLUI	145	1,2	70			75				
VALCEA	199	1,6	88			110	1			
VRANCEA	170	1,3	69			99	2			
MUN. BUCURESTI	2210	17,5	244	1		1950	15			
ILFOV	280	2,2	42			238				

Table no. 10

**The number of incorporations in the Trade Register, by field of activity\*  
and categories in February 2006**

CAEN segment	Field of activity	Total		out of which:						
				PF+AF	companies: 8329				RA	OC
		SNC	SCS		SRL	SA				
		No.	%	No.	No.	No.	No.	No.	No.	No.
0	1	2	3	4	5	6	7	8	9	10
	<b>Total ROMÂNIA</b>	<b>12605</b>	<b>100,0</b>	<b>4273</b>	<b>1</b>		<b>8281</b>	<b>47</b>	<b>1</b>	<b>2</b>
1	Agriculture, hunting and related service activities	1142	9,1	652			489	1		
2	Forestry, logging and related service activities	62	0,5	9			53			
5	Fishing, fish farming and related service activities	37	0,3	28			9			
10	Mining of coal and lignite; extraction of peat									
11	Extraction of crude petroleum and natural gas; service activities incidental to oil and gas extraction, excluding surveying									
12	Mining of uranium and thorium ores									
13	Mining of metal ores									
14	Other mining and quarrying	8	0,1				8			
15	Manufacture of food products and beverages	210	1,7	104			102	4		
16	Manufacture of tobacco products									
17	Manufacture of textiles	40	0,3	15			25			
18	Manufacture of wearing apparel; dressing and dyeing of fur	75	0,6	27			48			
19	Tanning and dressing of leather; manufacture of luggage, handbags, saddlery, harness and footwear	22	0,2	6			16			
20	Manufacture of wood and of products of wood and cork, except furniture; manufacture of articles of straw and plaiting materials	173	1,4	83			90			
21	Manufacture of pulp, paper and paper products	7	0,1				7			
22	Publishing, printing and reproduction of recorded media	76	0,6	6			69	1		
23	Manufacture of coke, refined petroleum products and nuclear fuel									
24	Manufacture of chemicals and chemical products	10	0,1				10			
25	Manufacture of rubber and plastic products	56	0,4	4			52			
26	Manufacture of other non-metallic mineral products	71	0,6	29			42			
27	Manufacture of basic metals	9	0,1	1			8			
28	Manufacture of fabricated metal products, except machinery and equipment	151	1,2	58			93			
29	Manufacture of machinery and equipment n.e.c.	20	0,2				20			
30	Manufacture of office machinery and computers	5	0,0				5			
31	Manufacture of electrical machinery and apparatus n.e.c.	12	0,1				12			
32	Manufacture of radio, television and communication equipment and apparatus	4	0,0	1			3			
33	Manufacture of medical, precision and optical instruments, watches and clocks	27	0,2	7			20			
34	Manufacture of motor vehicles, trailers and semi- trailers	2	0,0				2			
35	Manufacture of other transport equipment	11	0,1	1			10			
36	Manufacture of furniture; manufacturing n.e.c.	114	0,9	51			62	1		
37	Recycling	27	0,2	4			22	1		
40	Electricity, gas, steam and hot water supply	4	0,0	1			3			
41	Collection, purification and distribution of water	2	0,0				2			
45	Construction	1327	10,5	333			991	3		

*\*)Field of activity declared when registered, according to CAEN classification*

**Table no. 10**  
(continuance)

**The number of incorporations in the Trade Register, by field of activity\*  
and categories in February 2006**

CAEN segment	Field of activity	Total		out of which:						
				PF+AF	companies: 8329				RA	OC
					SNC	SCS	SRL	SA		
0	1	No.	%	No.	No.	No.	No.	No.	No.	
		2	3	4	5	6	7	8	9	10
	<b>Total ROMÂNIA</b>	<b>12605</b>	<b>100,0</b>	<b>4273</b>	<b>1</b>		<b>8281</b>	<b>47</b>	<b>1</b>	<b>2</b>
50	Sale, maintenance and repair of motor vehicles and motorcycles; retail sale of automotive fuel	356	2,8	87			268		1	
51	Wholesale trade and commission trade, except of motor vehicles and motorcycles	1213	9,6	275			937	1		
52	Retail trade, except of motor vehicles and motorcycles; repair of personal and household goods	2580	20,5	1153			1426			1
55	Hotels and restaurants	522	4,1	105			416	1		
60	Land transport; transport via pipelines	782	6,2	377			405			
61	Water transport	4	0,0				4			
62	Air transport	1	0,0					1		
63	Supporting and auxiliary transport activities; activities of travel agencies	102	0,8	12			90			
64	Post and telecommunications	114	0,9	18			96			
65	Financial intermediation, except insurance and pension funding	41	0,3				19	21		1
66	Insurance and pension funding, except compulsory social security	3	0,0	2				1		
67	Activities auxiliary to financial intermediation	64	0,5	2			61	1		
70	Real estate activities	407	3,2	7			398	2		
71	Renting of machinery and equipment without operator and of personal and household goods	33	0,3	5			28			
72	Computer and related activities	305	2,4	107			198			
73	Research and development	11	0,1				10	1		
74	Other business activities	1591	12,6	396	1		1190	4		
75	Public administration and defence; compulsory social security	1	0,0				1			
80	Education	64	0,5	20			44			
85	Health and social work	138	1,1	4			134			
90	Sewage and refuse disposal, sanitation and similar activities	10	0,1				9	1		
91	Activities of membership organizations n.e.c.	3	0,0	1			2			
92	Recreational, cultural and sporting activities	219	1,7	78			139	2		
93	Other service activities	317	2,5	185			132			
95	Activities of households as employers of domestic staff	19	0,2	18			1			
96	Extra-territorial organizations and bodies									

\*)Field of activity declared when registered, according to CAEN classification

**Number of companies registered and the amount  
of subscribed capital, by county in February 2006**

County	Total registered companies		Subscribed capital		Average subscribed capital on company
	No.	%	mil. ROL	%	mil. ROL
0	1	2	3	4	5
<b>Total ROMÂNIA</b>	<b>8329</b>	<b>100,0</b>	<b>132975,7</b>	<b>100,0</b>	<b>16,0</b>
ALBA	117	1,4	137,8	0,1	1,2
ARAD	214	2,6	527,4	0,4	2,5
ARGES	212	2,5	5500,8	4,1	25,9
BACAU	197	2,4	617,2	0,5	3,1
BIHOR	217	2,6	359,8	0,3	1,7
BISTRITA-NASAUD	95	1,1	171,4	0,1	1,8
BOTOSANI	56	0,7	44,7	0,0	0,8
BRASOV	289	3,5	6208,5	4,7	21,5
BRAILA	69	0,8	481,9	0,4	7,0
BUZAU	127	1,5	129,6	0,1	1,0
CARAS-SEVERIN	89	1,1	241,2	0,2	2,7
CALARASI	73	0,9	29,5	0,0	0,4
CLUJ	419	5,0	4890,3	3,7	11,7
CONSTANTA	365	4,4	932,2	0,7	2,6
COVASNA	56	0,7	125,6	0,1	2,2
DAMBOVITA	117	1,4	118,6	0,1	1,0
DOLJ	211	2,5	517,2	0,4	2,5
GALATI	214	2,6	313,3	0,2	1,5
GIURGIU	69	0,8	93,5	0,1	1,4
GORJ	72	0,9	19,7	0,0	0,3
HARGHITA	93	1,1	1468,6	1,1	15,8
HUNEDOARA	157	1,9	40,3	0,0	0,3
IALOMITA	53	0,6	113,5	0,1	2,2
IASI	307	3,7	302,0	0,2	1,0
MARAMURES	196	2,4	155,4	0,1	0,8
MEHEDINTI	50	0,6	26,9	0,0	0,5
MURES	175	2,1	55,1	0,0	0,3
NEAMT	153	1,8	229,5	0,2	1,5
OLT	90	1,1	57,1	0,0	0,6
PRAHOVA	258	3,1	890,7	0,7	3,5
SALAJ	94	1,1	59,1	0,0	0,6
SATU MARE	100	1,2	442,2	0,3	4,4
SIBIU	172	2,1	5954,1	4,5	34,8
SUCEAVA	187	2,2	89,2	0,1	0,5
TELEORMAN	63	0,8	39,7	0,0	0,6
TIMIS	364	4,4	1486,7	1,1	4,1
TULCEA	48	0,6	81,7	0,1	1,7
VASLUI	75	0,9	150,2	0,1	2,0
VALCEA	111	1,3	61,4	0,0	0,6
VRANCEA	101	1,2	2797,1	2,1	28,0
MUN. BUCURESTI	1966	23,6	94758,0	71,3	48,5
ILFOV	238	2,9	2256,9	1,7	9,5

*Note: The average does not include filials because according to the Law no.31/1990 they are not juridical persons*

*\*\*\* Less than 0,01%*

Table no. 12

**Number of registered companies and the amount  
of subscribed capital by category,  
in February 2006**

Company type	Total registered companies		Subscribed capital		Average subscribed capital on company
	No.	%	mil. ROL	%	mil. ROL
0	1	2	3	4	5
<b>Total ROMÂNIA</b>	<b>8329</b>	<b>100,0</b>	<b>132975,7</b>	<b>100,0</b>	<b>16,0</b>
SNC	1	0,0	0,2	***	0,2
SCS					
SA	47	0,6	25590,9	19,2	1112,6
SRL	8281	99,4	107384,6	80,8	13,0
SCA					

**Note:** The average does not include filials because according to the Law no.31/1990 they are not juridical persons

\*\*\* Less than 0,01%

Diagram no.5

