



MINISTRY OF JUSTICE

## THE NATIONAL TRADE REGISTER OFFICE

București, Bd. Unirii nr. 74, Bl. J3b, tronson II+III, sector 3; Telefon: +40 21 316.08.04, 316.08.10; Fax: +40 21 316.08.03; Cod poștal: 030837  
Website: [www.onrc.ro](http://www.onrc.ro); E-mail: [onrc@onrc.ro](mailto:onrc@onrc.ro); Cod de identificare Fiscală: 14942091; înregistrat ca operator date personale sub nr.1350

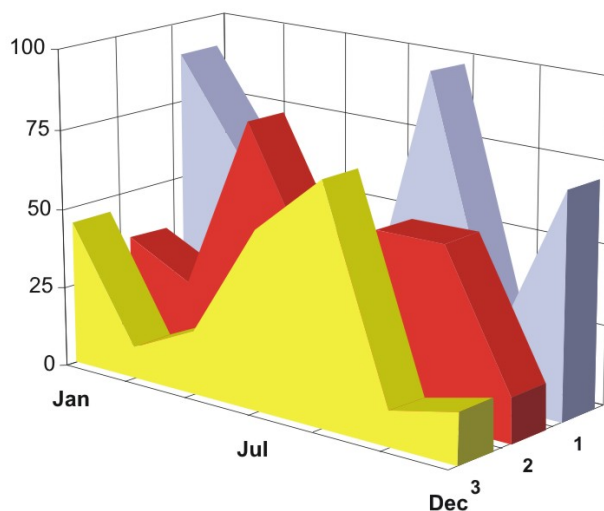
# PROCEEDINGS IN THE CENTRAL TRADE REGISTER

## STATISTICAL SYNTHESIS

OF

**RECORDS IN THE CENTRAL TRADE REGISTER**

**- the 31<sup>th</sup> of January 2006 - provisional data -**



- ISSUE No. 170 -

**MINISTRY OF JUSTICE  
THE NATIONAL TRADE REGISTER OFFICE**

---

- Operations of incorporation of companies, changes in statutory documents and strike-off of companies are based on Law No.26/1990 reissued, Law No.31/1990, reissued, OUG No.76/2001, reissued and Methodology Norms No. P/608/1998.
  
- This paper presents the trend in operations registered in The Trade Register Office attached to the law court of Bucharest and in the Trade Register Offices attached to the law court in each county of Romania.
  
- Information recorded in the Central Trade Register concern operations compulsory by law to be registered in the trade registers within the 42 trade register offices attached to the law courts.

*• No part of the content of this publication, in original or in any modified format, may be reproduced, stored in a retrieval system, or transmitted, in any form or by any means, without the prior permission in writing of The Ministry of Justice – The National Trade Register Office.*

*• The content of this publication may be referred to in articles, studies, books, as supporting or explanatory data under the condition only, the source of the information to be clearly and precisely specified.*

# Contents

	Page
<b>1 Explanatory Note</b>	<b>1</b>
<b>2.1 Data for December 1990 – January 2006</b>	<b>3</b>
Table no.1 – Operations registered in the Trade Register, by categories during the period of December 1990 – January 2006, in total by country and counties, rate of categories of operations in total operations country	3
Table no.1.a – Operations registered in the Trade Register, by categories during the period of December 1990 – January 2006, in total by country and counties, counties' rate in total country	4
Table no. 3 – Number and structure of incorporations in the Trade Register, by years, during the period of December 1990- January 2006	5
Table no.4 – The number of incorporations in the Trade Register, by counties and sources of capital, in the period December 1990 - January 2006	6
Table no. 5 – The number of incorporations in the Trade Register, by counties and categories, during the period of December 1990 – January 2006	7
Table no. 6 – The number of incorporations in the Trade Register, by field of activity and categories, during the period of December 1990 - January 2006	8
<b>2.2 Data for January 2006</b>	<b>10</b>
Table no. 7 – Operations carried on with the Trade Registers, by counties and categories, in January 2006	10
Table no. 8 – The number of incorporations in the Trade Register, by counties and sources of capital, in January 2006	11
Table no. 9 – The number of incorporations in the Trade Register, by counties and category in January 2006	12
Table no. 10 –The number of incorporations in the Trade Register, by field of activity and categories in January 2006	13
Table no. 11 – Number of companies registered and the amount of subscribed capital, by county in January 2006	15
Table no. 12– Number of registered companies and the amount of subscribed capital by category, in January 2006	16
Diagram no. 5 – Average subscribed capital on company in January 2006	16

## Explanatory Note

The Trade Register Office is set-up by Law No. 26/1990, reissued and modified by OUG No. 129/2002, became an active institution since December 1990 and is structured in two levels:

- the national level, represented by the National Trade Register Office organised under the Ministry of Justice
- the local level, represented by the 42 trade register offices attached to the law courts and co-ordinated by the National Trade Register Office

The categories of businessmen compulsory to register in the trade register are:

- natural persons tradesmen and family associations doing usually commercial acts, commercial companies, national companies, companies under state supervision, and co-operative organisations
- subsidiaries registered as commercial companies and legal persons following the legal proceedings of set-up, activity and incorporation according to the type of the legally set-up company.

### Usual Terms:

- incorporation – represents the registration of the company in the trade registry awarding the quality of legal person.

- other statutory documents – represent the official registration of the changes occurred in a company's life, such as: changes in headquarters' address, increase or decrease of the issued capital, merger, liquidation, strike-off, etc.

- strike-off – represents the removal of a company from the trade registry, due to dissolution and liquidation, being also the very moment the company loses its quality of legal person. Data also include the companies under the provisions of Law No. 314/2001.

- change of certificate – represents the obligation of companies set-up before OGU No. 76/2001 republished came in force, to request the incorporation certificate and fiscal registration certificate to be replaced with the new registration certificate containing the given unique registration code.

The ratio of these changes is being calculated as a proportion between the effective number of changes and the number of active companies due to operate the change.

- active company from the legal point of view – a company registered in the trade register and which is not affected by any of the situations leading to the temporary or permanent loss of this status (e.g. dissolution, liquidation, strike-off)

- operations represent all the records in the trade registry including incorporations, other statutory documents and strike-off of companies, irrespective of the object of activity, company's type and origin of the subscribed capital (local or foreign investment).

• **Terms used in tables and charts**

➤ **Number of companies:** represents, depending on the specific table, the number of companies incorporated in the related period, the number of companies being struck-off from the trade registry.

➤ **Amount of the subscribed capital:**

- **total, in local currency:** the amount of the subscribed capital resulted from totalising the amount subscribed (in cash and in kind) in local currency (ROL)

➤ **Regional development:**

<i>North-East:</i>	Suceava, Botoșani, Neamț, Iași, Bacău, Vaslui.
<i>South-East:</i>	Vrancea, Galați, Buzău, Brăila, Tulcea, Constanța.
<i>South-Muntenia:</i>	Argeș, Dâmbovița, Prahova, Teleorman, Giurgiu, Călărași, Ialomița.
<i>South-West Oltenia:</i>	Gorj, Vâlcea, Dolj, Mehedinți, Olt.
<i>West:</i>	Arad, Caraș-Severin, Hunedoara, Timiș.
<i>North-West:</i>	Bihor, Bistrița, Cluj, Satu Mare, Sălaj, Maramureș.
<i>Center:</i>	Alba, Brașov, Covasna, Harghita, Mureș, Sibiu.
<i>Bucharest-Ilfov:</i>	București, Ilfov.

CAEN code – The Classification of Activities in the National Economy was approved by HG No. 656/1997, modified by Order No 601 of the President of National Institute of Statistics being compatible with the international classification used in statistic reports and official documents. Activities are ranked upon homogeneity principle by sections, divisions, groups and classes.

Common abbreviations

- **PF** - Natural Persons Tradesman
- **AF** - Family association
- **SNC** - General Partnership
- **SCS** - Limited Partnership
- **SA** - Joint stock company
- **SRL** - Limited liability company
- **RA** - Company Under State Supervision
- **OC** - Co-operative organisation

Source:

The integrated IT system of the trade registry is designed by The National Trade Registry Office according to the provisions of the related legislation in force. The source of information is the computerised system of the trade registers handled by the Trade Register Offices attached to the law courts.

Table no. 1

**Operations registered in the Trade Register, by categories  
during the period of December 1990 - January 2006 in total by country and counties,  
- rate of categories of operations in total operations/country -**

Counties	Total of registered operations		out of which :									
			Registered companies		Changes in statutory documents		out of which :				Strike off companies	
	of liquidation, dissolution						out of which :					
	No.	%	No.	%	No.	%	No.	%	No.	%	No.	%
0	1	2	3	4	5	6	7	8	9	10	11	12
<b>Total ROMÂNIA</b>	<b>6295709</b>	<b>100,0</b>	<b>1429580</b>	<b>100,0</b>	<b>4561703</b>	<b>100,0</b>	<b>9911</b>	<b>100,0</b>	<b>165855</b>	<b>100,0</b>	<b>304426</b>	<b>100,0</b>
ALBA	85957	1,4	22079	1,5	61904	1,4	371	3,7	3596	2,2	1974	0,6
ARAD	139703	2,2	34444	2,4	98637	2,2	369	3,7	2974	1,8	6622	2,2
ARGES	152826	2,4	36939	2,6	110037	2,4	197	2,0	4219	2,5	5850	1,9
BACAU	148215	2,4	36554	2,6	105060	2,3	1003	10,1	5280	3,2	6601	2,2
BIHOR	193196	3,1	41846	2,9	143929	3,2	303	3,1	4598	2,8	7421	2,4
BISTRITA-NASAUD	79296	1,3	17547	1,2	57669	1,3	72	0,7	1120	0,7	4080	1,3
BOTOSANI	57827	0,9	17732	1,2	37506	0,8	66	0,7	1563	0,9	2589	0,9
BRASOV	210446	3,3	44257	3,1	159005	3,5	149	1,5	4892	2,9	7184	2,4
BRAILA	81452	1,3	20241	1,4	59735	1,3	61	0,6	2540	1,5	1476	0,5
BUZAU	117682	1,9	26593	1,9	85604	1,9	146	1,5	2109	1,3	5485	1,8
CARAS-SEVERIN	84445	1,3	17559	1,2	60420	1,3	41	0,4	1922	1,2	6466	2,1
CALARASI	55670	0,9	14665	1,0	38694	0,8	79	0,8			2311	0,8
CLUJ	273331	4,3	64748	4,5	204571	4,5	197	2,0			4012	1,3
CONSTANTA	272013	4,3	60576	4,2	194790	4,3	926	9,3	10621	6,4	16647	5,5
COVASNA	59341	0,9	12234	0,9	44139	1,0	18	0,2	1175	0,7	2968	1,0
DAMBOVITA	99310	1,6	26809	1,9	62191	1,4	98	1,0	2951	1,8	10310	3,4
DOLJ	163232	2,6	38116	2,7	116598	2,6	215	2,2	5633	3,4	8518	2,8
GALATI	178549	2,8	34212	2,4	135295	3,0	125	1,3	5370	3,2	9042	3,0
GIURGIU	42033	0,7	11539	0,8	27264	0,6	47	0,5			3230	1,1
GORJ	84715	1,3	17293	1,2	63504	1,4	48	0,5	2667	1,6	3918	1,3
HARGHITA	89252	1,4	21106	1,5	66405	1,5	51	0,5			1741	0,6
HUNEDOARA	118086	1,9	29751	2,1	80075	1,8	126	1,3	2944	1,8	8260	2,7
IALOMITA	61066	1,0	13675	1,0	43724	1,0	78	0,8	1586	1,0	3667	1,2
IASI	215687	3,4	43230	3,0	164510	3,6	597	6,0	4224	2,5	7947	2,6
MARAMURES	125617	2,0	37054	2,6	82682	1,8	159	1,6	2924	1,8	5881	1,9
MEHEDINTI	66428	1,1	16599	1,2	44263	1,0	55	0,6	3085	1,9	5566	1,8
MURES	151765	2,4	36012	2,5	110176	2,4	83	0,8	2942	1,8	5577	1,8
NEAMT	127365	2,0	32145	2,2	87668	1,9	304	3,1	2435	1,5	7552	2,5
OLT	89770	1,4	20899	1,5	61800	1,4	21	0,2	2033	1,2	7071	2,3
PRAHOVA	224222	3,6	46975	3,3	168713	3,7	274	2,8	3934	2,4	8534	2,8
SALAJ	49958	0,8	13488	0,9	33731	0,7	29	0,3	683	0,4	2739	0,9
SATU MARE	100245	1,6	23896	1,7	69547	1,5	26	0,3	2934	1,8	6802	2,2
SIBIU	138664	2,2	27294	1,9	107062	2,3	31	0,3	2583	1,6	4308	1,4
SUCEAVA	157461	2,5	36703	2,6	108304	2,4	29	0,3	2387	1,4	12454	4,1
TELEORMAN	70581	1,1	16452	1,2	52398	1,1	49	0,5	1504	0,9	1731	0,6
TIMIS	242901	3,9	48717	3,4	184609	4,0	271	2,7	7273	4,4	9575	3,1
TULCEA	64046	1,0	14849	1,0	46570	1,0	149	1,5	1002	0,6	2627	0,9
VASLUI	73912	1,2	18716	1,3	49049	1,1	197	2,0	1385	0,8	6147	2,0
VALCEA	103087	1,6	24140	1,7	73773	1,6	138	1,4	1888	1,1	5174	1,7
VRANCEA	80358	1,3	17924	1,3	60346	1,3	51	0,5	1594	1,0	2088	0,7
MUN. BUCURESTI	1289065	20,5	272795	19,1	947320	20,8	2641	26,6	51406	31,0	68950	22,6
ILFOV	76934	1,2	21177	1,5	52426	1,1	21	0,2	1879	1,1	3331	1,1

\*) according to the effect of Law No. 314/2001, art.1 și art. 6

\*\*\* Less than 0,01%

Table no. 2

**Operations registered in the Trade Register, by categories  
during the period of December 1990 - January 2006, in total by country and counties,  
- rate of categories of operations in total operations/country -**

Counties	Total of registered operations		out of which :									
			Registered companies		Changes in statutory documents		out of which :				Strike off companies	
	of liquidation, dissolution						out of which :					
	No.	%	No.	%	No.	%	No.	%	No.	%	No.	%
0	1	2	3	4	5	6	7	8	9	10	11	12
<b>Total ROMÂNIA</b>	<b>6295709</b>	<b>100,0</b>	<b>1429580</b>	<b>22,7</b>	<b>4561703</b>	<b>72,5</b>	<b>9911</b>	<b>0,2</b>	<b>165855</b>	<b>2,6</b>	<b>304426</b>	<b>4,8</b>
ALBA	85957	100,0	22079	25,7	61904	72,0	371	0,4	3596	4,2	1974	2,3
ARAD	139703	100,0	34444	24,7	98637	70,6	369	0,3	2974	2,1	6622	4,7
ARGES	152826	100,0	36939	24,2	110037	72,0	197	0,1	4219	2,8	5850	3,8
BACAU	148215	100,0	36554	24,7	105060	70,9	1003	0,7	5280	3,6	6601	4,5
BIHOR	193196	100,0	41846	21,7	143929	74,5	303	0,2	4598	2,4	7421	3,8
BISTRITA-NASAUD	79296	100,0	17547	22,1	57669	72,7	72	0,1	1120	1,4	4080	5,1
BOTOSANI	57827	100,0	17732	30,7	37506	64,9	66	0,1	1563	2,7	2589	4,5
BRASOV	210446	100,0	44257	21,0	159005	75,6	149	0,1	4892	2,3	7184	3,4
BRAILA	81452	100,0	20241	24,9	59735	73,3	61	0,1	2540	3,1	1476	1,8
BUZAU	117682	100,0	26593	22,6	85604	72,7	146	0,1	2109	1,8	5485	4,7
CARAS-SEVERIN	84445	100,0	17559	20,8	60420	71,5	41	0,0	1922	2,3	6466	7,7
CALARASI	55670	100,0	14665	26,3	38694	69,5	79	0,1			2311	4,2
CLUJ	273331	100,0	64748	23,7	204571	74,8	197	0,1			4012	1,5
CONSTANTA	272013	100,0	60576	22,3	194790	71,6	926	0,3	10621	3,9	16647	6,1
COVASNA	59341	100,0	12234	20,6	44139	74,4	18	0,0	1175	2,0	2968	5,0
DAMBOVITA	99310	100,0	26809	27,0	62191	62,6	98	0,1	2951	3,0	10310	10,4
DOLJ	163232	100,0	38116	23,4	116598	71,4	215	0,1	5633	3,5	8518	5,2
GALATI	178549	100,0	34212	19,2	135295	75,8	125	0,1	5370	3,0	9042	5,1
GIURGIU	42033	100,0	11539	27,5	27264	64,9	47	0,1			3230	7,7
GORJ	84715	100,0	17293	20,4	63504	75,0	48	0,1	2667	3,1	3918	4,6
HARGHITA	89252	100,0	21106	23,6	66405	74,4	51	0,1			1741	2,0
HUNEDOARA	118086	100,0	29751	25,2	80075	67,8	126	0,1	2944	2,5	8260	7,0
IALOMITA	61066	100,0	13675	22,4	43724	71,6	78	0,1	1586	2,6	3667	6,0
IASI	215687	100,0	43230	20,0	164510	76,3	597	0,3	4224	2,0	7947	3,7
MARAMURES	125617	100,0	37054	29,5	82682	65,8	159	0,1	2924	2,3	5881	4,7
MEHEDINTI	66428	100,0	16599	25,0	44263	66,6	55	0,1	3085	4,6	5566	8,4
MURES	151765	100,0	36012	23,7	110176	72,6	83	0,1	2942	1,9	5577	3,7
NEAMT	127365	100,0	32145	25,2	87668	68,8	304	0,2	2435	1,9	7552	5,9
OLT	89770	100,0	20899	23,3	61800	68,8	21	0,0	2033	2,3	7071	7,9
PRAHOVA	224222	100,0	46975	21,0	168713	75,2	274	0,1	3934	1,8	8534	3,8
SALAJ	49958	100,0	13488	27,0	33731	67,5	29	0,1	683	1,4	2739	5,5
SATU MARE	100245	100,0	23896	23,8	69547	69,4	26	0,0	2934	2,9	6802	6,8
SIBIU	138664	100,0	27294	19,7	107062	77,2	31	0,0	2583	1,9	4308	3,1
SUCEAVA	157461	100,0	36703	23,3	108304	68,8	29	0,0	2387	1,5	12454	7,9
TELEORMAN	70581	100,0	16452	23,3	52398	74,2	49	0,1	1504	2,1	1731	2,5
TIMIS	242901	100,0	48717	20,1	184609	76,0	271	0,1	7273	3,0	9575	3,9
TULCEA	64046	100,0	14849	23,2	46570	72,7	149	0,2	1002	1,6	2627	4,1
VASLUI	73912	100,0	18716	25,3	49049	66,4	197	0,3	1385	1,9	6147	8,3
VALCEA	103087	100,0	24140	23,4	73773	71,6	138	0,1	1888	1,8	5174	5,0
VRANCEA	80358	100,0	17924	22,3	60346	75,1	51	0,1	1594	2,0	2088	2,6
MUN. BUCURESTI	1289065	100,0	272795	21,2	947320	73,5	2641	0,2	51406	4,0	68950	5,3
ILFOV	76934	100,0	21177	27,5	52426	68,1	21	0,0	1879	2,4	3331	4,3

\*) according to the effect of Law No. 314/2001, art.1 și art. 6

\*\*\* Less than 0,01%

Table no.3

Number and structure of incorporations in the Trade Register, by years, during the period of December 1990 - January 2006

Period (year, month)	Registered companies		Percentage	
	No.	%	%	
0	1	2	3	
<b>Total, 31 January 2006, out of which</b>	<b>1429580</b>	<b>100,00</b>		
Year 1990	81	0,01		
Year 1991	95840	6,70		
Year 1992	137456	9,62		
Year 1993	117078	8,19		
Year 1994	137445	9,61		
Year 1995	65479	4,58		
Year 1996	62089	4,34		
Year 1997	55663	3,89		
Year 1998	63878	4,47		
Year 1999	57197	4,00		
Year 2000	57291	4,01		
Year 2001	61265	4,29		
Year 2002	84780	5,93		
Year 2003	123582	8,64		
Year 2004	144284	10,09		
Year 2005	157375	11,01		
<b>Year 2006 (I - XII) out of which :</b>				<b>100,0</b>
January	8797	0,62		100,0

Note: Column 2 reveals the annual structure of incorporations; column 3 reveals the structure by months during the current year.

\*\*\* Less than 0,01%

Diagram no.1

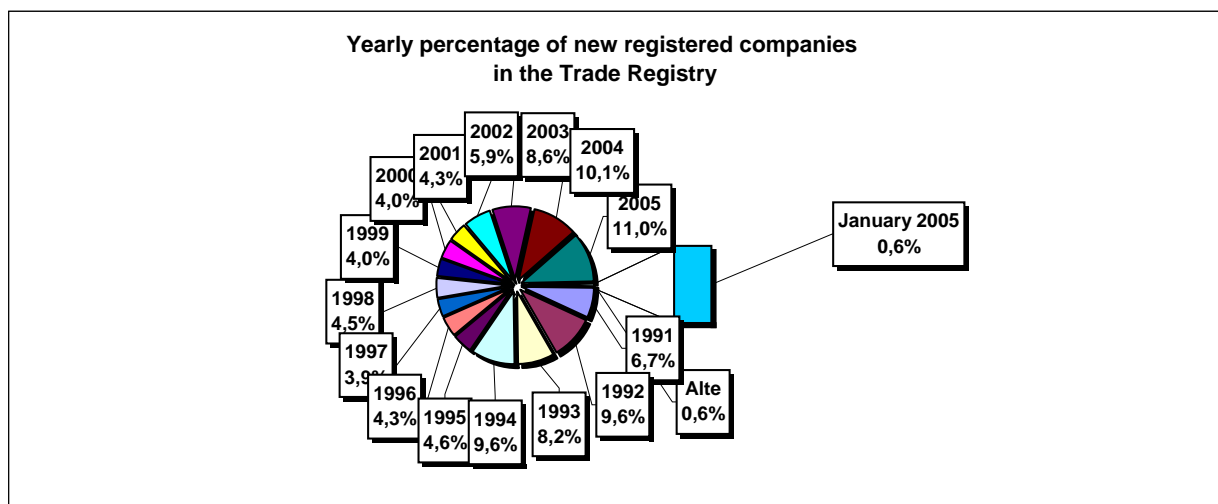


Table no. 4

**The number of incorporations in the Trade Register, by counties and sources of capital, in the period December 1990 - January 2006**

Counties	Total		out of which:					Ranking by: *	
			Private capital			State majority capital			Mixed capital (state+private)
			out of which:			out of which:			
			PF+AF	Companies	OC	RA	Companies		Companies
No.	%	No.	No.	No.	No.	No.	No.		
0	1	2	3	4	5	6	7	8	9
<b>Total ROMÂNIA</b>	<b>1429580</b>	<b>100,0</b>	<b>360026</b>	<b>1051923</b>	<b>5388</b>	<b>1325</b>	<b>2359</b>	<b>8559</b>	<b>X</b>
ALBA	22079	1,5	7467	14219	141	35	47	170	24
ARAD	34445	2,4	13231	20658	157	26	40	333	15
ARGES	36939	2,6	11977	24584	168	29	29	152	11
BACAU	36554	2,6	12128	23968	158	35	42	223	13
BIHOR	41846	2,9	8418	32877	146	36	62	307	8
BISTRITA-NASAUD	17547	1,2	6240	11052	98	19	29	109	33
BOTOSANI	17732	1,2	7888	9410	122	21	172	119	31
BRASOV	44257	3,1	8785	35061	114	41	87	169	6
BRAILA	20241	1,4	4962	14947	96	28	43	165	28
BUZAU	26593	1,9	7595	18658	142	25	42	131	21
CARAS-SEVERIN	17559	1,2	6084	11138	102	33	65	137	32
CALARASI	14665	1,0	4243	10146	86	18	77	95	38
CLUJ	64748	4,5	15829	48416	150	52	40	261	2
CONSTANTA	60576	4,2	11410	48323	203	51	49	540	3
COVASNA	12234	0,9	3969	8033	67	24	32	109	41
DAMBOVITA	26809	1,9	12398	14021	134	29	75	152	20
DOLJ	38116	2,7	7253	30402	162	40	57	202	9
GALATI	34212	2,4	6384	27469	135	30	51	143	16
GIURGIU	11539	0,8	2669	8550	80	21	109	110	42
GORJ	17293	1,2	3840	13036	184	50	83	100	34
HARGHITA	21106	1,5	7892	12834	85	23	43	229	26
HUNEDOARA	29751	2,1	7796	21463	81	37	92	282	18
IALOMITA	13675	1,0	5258	8191	74	15	46	91	39
IASI	43230	3,0	11626	30992	164	34	70	344	7
MARAMURES	37054	2,6	15227	21507	121	37	39	123	10
MEHEDINTI	16599	1,2	5092	11282	82	19	26	98	35
MURES	36012	2,5	13268	22359	154	30	34	167	14
NEAMT	32145	2,2	11791	19969	161	29	30	165	17
OLT	20899	1,5	8346	12179	161	26	64	123	27
PRAHOVA	46975	3,3	14104	32305	177	50	68	271	5
SALAJ	13488	0,9	5210	8062	107	19	28	62	40
SATU MARE	23896	1,7	7519	16094	88	19	42	134	23
SIBIU	27294	1,9	6429	20451	117	31	108	158	19
SUCEAVA	36703	2,6	17564	18623	202	30	64	220	12
TELEORMAN	16452	1,2	5586	10469	152	21	43	181	36
TIMIS	48717	3,4	7285	40842	140	37	68	345	4
TULCEA	14849	1,0	4780	9731	66	18	42	212	37
VASLUI	18716	1,3	9208	9207	109	16	41	135	29
VALCEA	24140	1,7	9503	14279	168	40	37	113	22
VRANCEA	17924	1,3	5387	12276	104	16	27	114	30
MUN. BUCURESTI	272794	19,1	15749	255585	138	115	103	1104	1
ILFOV	21177	1,5	2636	18255	92	20	13	161	25

\*) The total number of incorporations (col 1)

\*\*\* Less than 0,01%

Table no. 5

**The number of incorporations in the Trade Register,  
by counties and categories, during the period of  
December 1990 - January 2006**

County	Total		out of which:						RA	OC
			PF+AF	companies: 1062841						
	SNC	SCS		SRL	SA	No.	No.			
	No.	%	No.	No.	No.			No.	No.	No.
0	1	2	3	4	5	6	7	8	9	
<b>Total ROMÂNIA</b>	<b>1429580</b>	<b>100,0</b>	<b>360026</b>	<b>32642</b>	<b>1558</b>	<b>997573</b>	<b>31062</b>	<b>1325</b>	<b>5388</b>	
ALBA	22079	1,5	7467	888	11	12998	539	35	141	
ARAD	34444	2,4	13231	53	10	20318	648	26	157	
ARGES	36939	2,6	11977	107	14	23855	789	29	168	
BACAU	36554	2,6	12128	1299	4	22227	702	35	158	
BIHOR	41846	2,9	8418	125	47	32198	876	36	146	
BISTRITA-NASAUD	17547	1,2	6240	146	21	10621	402	19	98	
BOTOSANI	17732	1,2	7888	468	1	8792	440	21	122	
BRASOV	44257	3,1	8785	239	19	34244	815	41	114	
BRAILA	20241	1,4	4962	376	12	14267	500	28	96	
BUZAU	26593	1,9	7595	3747	46	14493	545	25	142	
CARAS-SEVERIN	17559	1,2	6084	117	8	10761	454	33	102	
CALARASI	14665	1,0	4243	609	3	9363	343	18	86	
CLUJ	64748	4,5	15829	2111	18	45396	1192	52	150	
CONSTANTA	60576	4,2	11410	311	23	47148	1430	51	203	
COVASNA	12234	0,9	3969	148	4	7731	291	24	67	
DAMBOVITA	26809	1,9	12398	60	8	13704	476	29	134	
DOLJ	38116	2,7	7253	1560	8	28250	843	40	162	
GALATI	34212	2,4	6384	1574	6	25273	810	30	135	
GIURGIU	11539	0,8	2669	35	8	8414	312	21	80	
GORJ	17293	1,2	3840	29	1	12720	469	50	184	
HARGHITA	21106	1,5	7892	62	6	12563	475	23	85	
HUNEDOARA	29751	2,1	7796	1166	98	19923	650	37	81	
IALOMITA	13675	1,0	5258	266	11	7719	332	15	74	
IASI	43230	3,0	11626	506	111	29815	972	34	164	
MARAMURES	37054	2,6	15227	1926	23	19146	573	37	121	
MEHEDINTI	16599	1,2	5092	427	3	10657	319	19	82	
MURES	36012	2,5	13268	37	34	21855	634	30	154	
NEAMT	32145	2,2	11791	3293	30	16193	648	29	161	
OLT	20899	1,5	8346	1611	1	10278	476	26	161	
PRAHOVA	46975	3,3	14104	3122	12	28655	855	50	177	
SALAJ	13488	0,9	5210	600	4	7271	277	19	107	
SATU MARE	23896	1,7	7519	283	5	15529	453	19	88	
SIBIU	27294	1,9	6429	775	48	19268	626	31	117	
SUCEAVA	36703	2,6	17564	438	8	17894	567	30	202	
TELEORMAN	16452	1,2	5586	272	399	9622	400	21	152	
TIMIS	48717	3,4	7285	606	27	39416	1206	37	140	
TULCEA	14849	1,0	4780	1363	114	8044	464	18	66	
VASLUI	18716	1,3	9208	90	11	8889	393	16	109	
VALCEA	24140	1,7	9503	363	6	13596	464	40	168	
VRANCEA	17924	1,3	5387	356	10	11616	435	16	104	
MUN. BUCURESTI	272795	19,1	15749	1029	295	249062	6406	115	138	
ILFOV	21177	1,5	2636	49	30	17789	561	20	92	

Table no. 6

**The number of incorporations in the Trade Register, by field of activity\*  
during the period of December 1990 - January 2006**

CAEN segment	Field of activity	Total		out of which:						
				PF+AF	companies: 1062841				RA	OC
		No.	%		No.	SNC	SCS	SRL		
				No.		No.	No.	No.	No.	No.
0	1	2	3	4	5	6	7	8	9	10
	<b>Total ROMANIA</b>	<b>1429580</b>	<b>100,0</b>	<b>360026</b>	<b>32642</b>	<b>1558</b>	<b>997573</b>	<b>31062</b>	<b>1325</b>	<b>5388</b>
1	Agriculture, hunting and related service activities	55600	3,9	11100	2024	44	38495	3769	51	117
2	Forestry, logging and related service activities	7626	0,5	967	152	3	6196	220	80	8
5	Fishing, fish farming and related service activities	2394	0,2	1285	17	3	1036	53		
10	Mining of coal and lignite; extraction of peat	107	0,0	2			70	31	4	
11	Extraction of crude petroleum and natural gas; service activities incidental to oil and gas extraction, excluding surveying	314	0,0	3	1		143	121	46	
12	Mining of uranium and thorium ores	133	0,0	32			95	6		
13	Mining of metal ores	522	0,0	163			296	55	8	
14	Other mining and quarrying	1408	0,1	105	9	1	1123	167	2	1
15	Manufacture of food products and beverages	71617	5,0	13614	3260	149	52505	1836	5	248
16	Manufacture of tobacco products	285	0,0	47			206	31	1	
17	Manufacture of textiles	11333	0,8	2259	556	16	7952	405		145
18	Manufacture of wearing apparel; dressing and dyeing of fur	19990	1,4	4476	875	38	13939	356	1	305
19	Tanning and dressing of leather; manufacture of luggage, handbags, saddlery, harness and footwear	5040	0,4	863	112	6	3884	123	1	51
20	Manufacture of wood and of products of wood and cork, except furniture; manufacture of articles of straw and plaiting materials	23564	1,6	8195	575	29	14219	495	9	42
21	Manufacture of pulp, paper and paper products	1675	0,1	109	21	1	1434	97		13
22	Publishing, printing and reproduction of recorded media	11114	0,8	889	317	21	9464	399	14	10
23	Manufacture of coke, refined petroleum products and nuclear fuel	252	0,0	24			192	34	2	
24	Manufacture of chemicals and chemical products	3551	0,2	115	89	1	2958	376	6	6
25	Manufacture of rubber and plastic products	5763	0,4	541	313	7	4621	256		24
26	Manufacture of other non-metallic mineral products	8348	0,6	2509	212	6	5224	379	5	13
27	Manufacture of basic metals	2372	0,2	165	39	3	1949	206	3	7
28	Manufacture of fabricated metal products, except machinery and equipment	15360	1,1	3470	361	23	10715	718	11	62
29	Manufacture of machinery and equipment n.e.c.	3620	0,3	99	44	7	3028	418	19	5
30	Manufacture of office machinery and computers	1737	0,1	15	25	4	1613	80		
31	Manufacture of electrical machinery and apparatus n.e.c.	1822	0,1	104	44	6	1519	143		6
32	Manufacture of radio, television and communication equipment and apparatus	823	0,1	52	14	4	679	73		1
33	Manufacture of medical, precision and optical instruments, watches and clocks	2332	0,2	565	17	2	1646	98		4
34	Manufacture of motor vehicles, trailers and semi-trailers	866	0,1	29	31	3	679	122		2
35	Manufacture of other transport equipment	1763	0,1	261	86	7	1213	121	73	2
36	Manufacture of furniture; manufacturing n.e.c.	14336	1,0	4046	284	16	9495	332	5	158
37	Recycling	4493	0,3	397	51	5	3868	171		1
40	Electricity, gas, steam and hot water supply	2810	0,2	833	3	1	1384	501	88	
41	Collection, purification and distribution of water	3521	0,2	1616	2		1642	188	73	
45	Construction	76178	5,3	20191	611	42	52813	2391	53	77

\*)Field of activity declared when registered, according to CAEN classification

**Table no. 6**  
(continuing)

**The number of incorporations in the Trade Register, by field of activity\*  
and categories, during the period of December 1990 - January 2006**

CAEN segment	Field of activity	Total		out of which:						RA	OC
				PF+AF	companies: 1062841						
					SNC	SCS	SRL	SA			
					No.	No.	No.	No.			
0	1	2	3	4	5	6	7	8	9	10	
	<b>Total ROMÂNIA</b>	<b>1429580</b>	<b>100,0</b>	<b>360026</b>	<b>32642</b>	<b>1558</b>	<b>997573</b>	<b>31062</b>	<b>1325</b>	<b>5388</b>	
50	Sale, maintenance and repair of motor vehicles and motorcycles; retail sale of automotive fuel	50525	3,5	7742	1244		40436	1022	5	42	
51	Wholesale trade and commission trade, except of motor vehicles and motorcycles	189925	13,3	15339	4523	150	166331	3266	35	281	
52	Retail trade, except of motor vehicles and motorcycles; repair of personal and household goods	474280	33,2	166574	11914	556	290370	2481	5	2379	
55	Hotels and restaurants	54752	3,8	13145	1635	126	38909	769	73	95	
60	Land transport; transport via pipelines	73522	5,1	33198	844	36	38352	1049	33	10	
61	Water transport	811	0,1	147	82	8	439	64	70	1	
62	Air transport	284	0,0	17			213	44	10		
63	Supporting and auxiliary transport activities; activities of travel agencies	9376	0,7	566	220	14	8037	432	96	11	
64	Post and telecommunications	6051	0,4	412	11	1	5322	291	11	3	
65	Financial intermediation, except insurance and pension funding	5707	0,4	143	15		2439	2076	2	1032	
66	Insurance and pension funding, except compulsory social security	1952	0,1	606	1		503	841		1	
67	Activities auxiliary to financial intermediation	6038	0,4	1234	6	2	4512	276		8	
70	Real estate activities	17199	1,2	645	28	8	15947	547	17	7	
71	Renting of machinery and equipment without operator and of personal and household goods	2953	0,2	591	116	8	2075	92	70	1	
72	Computer and related activities	19438	1,4	3072	119	13	15847	382	2	3	
73	Research and development	1607	0,1	234	11	2	1146	169	43	2	
74	Other business activities	92704	6,5	18664	788	73	71407	1605	106	60	
75	Public administration and defence; compulsory social security	355	0,0	87	5		215	26	21	1	
80	Education	5907	0,4	3052	62	5	2723	65			
85	Health and social work	14919	1,0	2069	233	15	12518	80	3	1	
90	Sewage and refuse disposal, sanitation and similar activities	776	0,1	80	13	2	559	102	18		
91	Activities of membership organizations n.e.c.	207	0,0	91	1		97	15		3	
92	Recreational, cultural and sporting activities	13914	1,0	3230	202	14	10100	287	69	12	
93	Other service activities	22951	1,6	9511	418	42	12472	305	76	126	
95	Activities of households as employers of domestic staff	698	0,0	399	6	1	288	3		1	
96	Extra-territorial organizations and bodies	4	0,0	4							

\*)Field of activity declared when registered, according to CAEN classification

Table no. 7

**Operations carried on with the Trade Registers,  
by counties and categories,  
in January 2006**

County	Total of operations carried on		out of which:							
			New incorporations		Changes in statutory documents		out of which: of liquidation, dissolution		Strike off companies	
	No.	%	No.	%	No.	%	No.	%	No.	%
0	1	2	3	4	5	6	7	8	9	10
<b>Total ROMÂNIA</b>	<b>62356</b>	<b>100,0</b>	<b>8797</b>	<b>14,1</b>	<b>48974</b>	<b>78,5</b>	<b>3597</b>	<b>5,8</b>	<b>4585</b>	<b>7,4</b>
ALBA	858	100,0	142	16,6	651	75,9	9	1,0	65	7,6
ARAD	1240	100,0	222	17,9	950	76,6	19	1,5	68	5,5
ARGES	1177	100,0	191	16,2	944	80,2	241	20,5	42	3,6
BACAU	1230	100,0	203	16,5	968	78,7	67	5,4	59	4,8
BIHOR	1517	100,0	340	22,4	1096	72,2	34	2,2	81	5,3
BISTRITA-NASAUD	506	100,0	91	18,0	377	74,5	9	1,8	38	7,5
BOTOSANI	671	100,0	107	15,9	494	73,6			70	10,4
BRASOV	2484	100,0	277	11,2	2153	86,7	174	7,0	54	2,2
BRAILA	783	100,0	126	16,1	601	76,8	2	0,3	56	7,2
BUZAU	1574	100,0	155	9,8	1219	77,4	7	0,4	200	12,7
CARAS-SEVERIN	506	100,0	111	21,9	374	73,9	19	3,8	21	4,2
CALARASI	384	100,0	99	25,8	260	67,7	2	0,5	25	6,5
CLUJ	1889	100,0	414	21,9	1408	74,5	431	22,8	67	3,5
CONSTANTA	2203	100,0	290	13,2	1829	83,0	20	0,9	84	3,8
COVASNA	425	100,0	87	20,5	297	69,9	25	5,9	41	9,6
DAMBOVITA	1742	100,0	135	7,7	1078	61,9	5	0,3	529	30,4
DOLJ	1355	100,0	245	18,1	1075	79,3	2	0,1	35	2,6
GALATI	1826	100,0	245	13,4	1514	82,9	327	17,9	67	3,7
GIURGIU	324	100,0	69	21,3	246	75,9	10	3,1	9	2,8
GORJ	1490	100,0	118	7,9	1335	89,6	649	43,6	37	2,5
HARGHITA	1160	100,0	149	12,8	964	83,1	77	6,6	47	4,1
HUNEDOARA	1037	100,0	185	17,8	836	80,6	4	0,4	16	1,5
IALOMITA	331	100,0	83	25,1	229	69,2	1	0,3	19	5,7
IASI	2186	100,0	282	12,9	1882	86,1	755	34,5	22	1,0
MARAMURES	1384	100,0	239	17,3	898	64,9	1	0,1	247	17,8
MEHEDINTI	1009	100,0	87	8,6	910	90,2	26	2,6	12	1,2
MURES	1143	100,0	194	17,0	853	74,6	16	1,4	96	8,4
NEAMT	1352	100,0	184	13,6	1107	81,9	69	5,1	61	4,5
OLT	686	100,0	134	19,5	530	77,3	2	0,3	22	3,2
PRAHOVA	1749	100,0	259	14,8	1395	79,8	12	0,7	95	5,4
SALAJ	407	100,0	111	27,3	258	63,4	41	10,1	38	9,3
SATU MARE	730	100,0	148	20,3	566	77,5	29	4,0	16	2,2
SIBIU	1149	100,0	177	15,4	906	78,9	40	3,5	66	5,7
SUCEAVA	1602	100,0	246	15,4	1293	80,7	292	18,2	63	3,9
TELEORMAN	430	100,0	107	24,9	306	71,2	3	0,7	17	4,0
TIMIS	1544	100,0	321	20,8	1193	77,3	8	0,5	30	1,9
TULCEA	456	100,0	104	22,8	332	72,8	37	8,1	20	4,4
VASLUI	3822	100,0	75	2,0	2028	53,1			1719	45,0
VALCEA	1312	100,0	148	11,3	1076	82,0	1	0,1	88	6,7
VRANCEA	629	100,0	109	17,3	475	75,5	29	4,6	45	7,2
MUN. BUCURESTI	13135	100,0	1603	12,2	11369	86,6	101	0,8	163	1,2
ILFOV	919	100,0	185	20,1	699	76,1	1	0,1	35	3,8

\*) by effect of implementation of Law no. 314/2001, art.1 and art. 6

\*\*\* Less than 0,01%

Table no. 8

**The number of incorporations in the Trade Register,  
by counties and sources of capital,  
in January 2006**

County	Total		out of which:					Ranking by: *	
			Private capital			State majority capital			Mixed capital (state+private)
			out of which:			out of which:			
			PF+AF	Companies	OC	RA	Companies		Companies
No.	%	No.	No.	No.	No.	No.	No.		
0	1	2	3	4	5	6	7	8	9
<b>Total ROMÂNIA</b>	<b>8797</b>	<b>100,0</b>	<b>2520</b>	<b>6275</b>		<b>1</b>		<b>1</b>	<b>X</b>
ALBA	142	1,6	58	84					25
ARAD	222	2,5	65	157					13
ARGES	191	2,2	32	159					16
BACAU	203	2,3	67	136					14
BIHOR	340	3,9	139	201					3
BISTRITA-NASAUD	91	1,0	34	57					37
BOTOSANI	107	1,2	54	53					33
BRASOV	277	3,1	76	200		1			7
BRAILA	126	1,4	31	95					28
BUZAU	155	1,8	53	102					21
CARAS-SEVERIN	111	1,3	29	82					30
CALARASI	99	1,1	35	64					36
CLUJ	414	4,7	133	281					2
CONSTANTA	290	3,3	66	224					5
COVASNA	87	1,0	36	51					38
DAMBOVITA	135	1,5	49	86					26
DOLJ	245	2,8	73	172					10
GALATI	245	2,8	59	186					11
GIURGIU	69	0,8	24	45					42
GORJ	118	1,3	46	72					29
HARGHITA	149	1,7	71	78					22
HUNEDOARA	185	2,1	35	150					17
IALOMITA	83	0,9	29	54					40
IASI	282	3,2	81	201					6
MARAMURES	239	2,7	81	158					12
MEHEDINTI	87	1,0	28	59					39
MURES	194	2,2	56	138					15
NEAMT	184	2,1	56	128					19
OLT	134	1,5	59	75					27
PRAHOVA	259	2,9	95	164					8
SALAJ	111	1,3	37	74					31
SATU MARE	148	1,7	57	91					23
SIBIU	177	2,0	49	128					20
SUCEAVA	246	2,8	98	148					9
TELEORMAN	107	1,2	40	67					34
TIMIS	321	3,6	66	255					4
TULCEA	104	1,2	55	49					35
VASLUI	75	0,9	33	42					41
VALCEA	148	1,7	71	77					24
VRANCEA	109	1,2	42	66				1	32
MUN. BUCURESTI	1603	18,2	188	1415					1
ILFOV	185	2,1	34	151					18

\*) The total number of incorporations (col 1)

\*\*\* Less than 0,01%

Table no.9

**The number of incorporations in the Trade Register,  
by counties and category  
in January 2006**

County	Total		out of which:						
			PF+AF	companies: 6276				RA	OC
	SNC	SCS		SRL	SA				
	No.	%	No.	No.	No.	No.	No.	No.	
0	1	2	3	4	5	6	7	8	9
<b>Total ROMÂNIA</b>	<b>8797</b>	<b>100,0</b>	<b>2520</b>	<b>1</b>		<b>6232</b>	<b>43</b>	<b>1</b>	
ALBA	142	1,6	58			84			
ARAD	222	2,5	65	1		155	1		
ARGES	191	2,2	32			159			
BACAU	203	2,3	67			135	1		
BIHOR	340	3,9	139			199	2		
BISTRITA-NASAUD	91	1,0	34			57			
BOTOSANI	107	1,2	54			53			
BRASOV	277	3,1	76			199	1	1	
BRAILA	126	1,4	31			95			
BUZAU	155	1,8	53			101	1		
CARAS-SEVERIN	111	1,3	29			82			
CALARASI	99	1,1	35			64			
CLUJ	414	4,7	133			279	2		
CONSTANTA	290	3,3	66			224			
COVASNA	87	1,0	36			51			
DAMBOVITA	135	1,5	49			85	1		
DOLJ	245	2,8	73			172			
GALATI	245	2,8	59			184	2		
GIURGIU	69	0,8	24			45			
GORJ	118	1,3	46			71	1		
HARGHITA	149	1,7	71			78			
HUNEDOARA	185	2,1	35			149	1		
IALOMITA	83	0,9	29			54			
IASI	282	3,2	81			199	2		
MARAMURES	239	2,7	81			157	1		
MEHEDINTI	87	1,0	28			58	1		
MURES	194	2,2	56			137	1		
NEAMT	184	2,1	56			125	3		
OLT	134	1,5	59			75			
PRAHOVA	259	2,9	95			163	1		
SALAJ	111	1,3	37			73	1		
SATU MARE	148	1,7	57			91			
SIBIU	177	2,0	49			128			
SUCEAVA	246	2,8	98			146	2		
TELEORMAN	107	1,2	40			67			
TIMIS	321	3,6	66			252	3		
TULCEA	104	1,2	55			48	1		
VASLUI	75	0,9	33			42			
VALCEA	148	1,7	71			77			
VRANCEA	109	1,2	42			66	1		
MUN. BUCURESTI	1603	18,2	188			1404	11		
ILFOV	185	2,1	34			149	2		

Table no. 10

**The number of incorporations in the Trade Register, by field of activity\*  
and categories in January 2006**

CAEN segment	Field of activity	Total		out of which:						RA	OC
				PF+AF	companies: 6276						
		SNC	SCS		SRL	SA	No.	No.			
		No.	No.		No.	No.			No.	No.	
0	1	2	3	4	5	6	7	8	9	10	
	<b>Total ROMÂNIA</b>	<b>8797</b>	<b>100,0</b>	<b>2520</b>	<b>1</b>		<b>6232</b>	<b>43</b>	<b>1</b>		
1	Agriculture, hunting and related service activities	577	6,6	299			277	1			
2	Forestry, logging and related service activities	78	0,9	16			60	1	1		
5	Fishing, fish farming and related service activities	39	0,4	28			11				
10	Mining of coal and lignite; extraction of peat	1	0,0				1				
11	Extraction of crude petroleum and natural gas; service activities incidental to oil and gas extraction, excluding surveying	1	0,0				1				
12	Mining of uranium and thorium ores										
13	Mining of metal ores										
14	Other mining and quarrying	12	0,1				12				
15	Manufacture of food products and beverages	152	1,7	73			78	1			
16	Manufacture of tobacco products										
17	Manufacture of textiles	31	0,4	7			24				
18	Manufacture of wearing apparel; dressing and dyeing of fur	51	0,6	13			38				
19	Tanning and dressing of leather; manufacture of luggage, handbags, saddlery, harness and footwear	15	0,2	5			9	1			
20	Manufacture of wood and of products of wood and cork, except furniture; manufacture of articles of straw and plaiting materials	117	1,3	45			72				
21	Manufacture of pulp, paper and paper products	10	0,1	2			8				
22	Publishing, printing and reproduction of recorded media	43	0,5	4			39				
23	Manufacture of coke, refined petroleum products and nuclear fuel										
24	Manufacture of chemicals and chemical products	14	0,2	1			12	1			
25	Manufacture of rubber and plastic products	35	0,4	1			34				
26	Manufacture of other non-metallic mineral products	40	0,5	18			22				
27	Manufacture of basic metals	7	0,1	1			6				
28	Manufacture of fabricated metal products, except machinery and equipment	100	1,1	33			67				
29	Manufacture of machinery and equipment n.e.c.	20	0,2				20				
30	Manufacture of office machinery and computers	2	0,0				2				
31	Manufacture of electrical machinery and apparatus n.e.c.	4	0,0				4				
32	Manufacture of radio, television and communication equipment and apparatus	2	0,0				2				
33	Manufacture of medical, precision and optical instruments, watches and clocks	15	0,2	5			10				
34	Manufacture of motor vehicles, trailers and semi- trailers	7	0,1				7				
35	Manufacture of other transport equipment	9	0,1				9				
36	Manufacture of furniture; manufacturing n.e.c.	81	0,9	31			50				
37	Recycling	29	0,3	2			26	1			
40	Electricity, gas, steam and hot water supply	6	0,1				4	2			
41	Collection, purification and distribution of water										
45	Construction	913	10,4	171			740	2			

\*)Field of activity declared when registered, according to CAEN classification

**Table no. 10**  
(continuance)

**The number of incorporations in the Trade Register, by field of activity\*  
and categories in January 2006**

CAEN segment	Field of activity	Total		out of which:						
				PF+AF	companies: 6276				RA	OC
		No.	%		No.	SNC	SCS	SRL		
				No.		No.	No.	No.	No.	No.
0	1	2	3	4	5	6	7	8	9	10
	<b>Total ROMÂNIA</b>	<b>8797</b>	<b>100,0</b>	<b>2520</b>	<b>1</b>		<b>6232</b>	<b>43</b>	<b>1</b>	
50	Sale, maintenance and repair of motor vehicles and motorcycles; retail sale of automotive fuel	233	2,6	49			184			
51	Wholesale trade and commission trade, except of motor vehicles and motorcycles	919	10,4	171			745	3		
52	Retail trade, except of motor vehicles and motorcycles; repair of personal and household goods	1875	21,3	726			1149			
55	Hotels and restaurants	383	4,4	69			314			
60	Land transport; transport via pipelines	608	6,9	254			354			
61	Water transport	1	0,0				1			
62	Air transport	1	0,0				1			
63	Supporting and auxiliary transport activities; activities of travel agencies	81	0,9	9			71	1		
64	Post and telecommunications	75	0,9	8			67			
65	Financial intermediation, except insurance and pension funding	43	0,5				28	15		
66	Insurance and pension funding, except compulsory social security									
67	Activities auxiliary to financial intermediation	51	0,6	1			49	1		
70	Real estate activities	301	3,4				298	3		
71	Renting of machinery and equipment without operator and of personal and household goods	20	0,2	1			19			
72	Computer and related activities	260	3,0	86			174			
73	Research and development	9	0,1				9			
74	Other business activities	1056	12,0	211	1		836	8		
75	Public administration and defence; compulsory social security	1	0,0				1			
80	Education	33	0,4	7			26			
85	Health and social work	96	1,1	5			91			
90	Sewage and refuse disposal, sanitation and similar activities	14	0,2	3			11			
91	Activities of membership organizations n.e.c.									
92	Recreational, cultural and sporting activities	131	1,5	43			86	2		
93	Other service activities	167	1,9	96			71			
95	Activities of households as employers of domestic staff	28	0,3	26			2			
96	Extra-territorial organizations and bodies									

\*)Field of activity declared when registered, according to CAEN classification

**Number of companies registered and the amount  
of subscribed capital, by county in January 2006**

County	Total registered companies		Subscribed capital		Average subscribed capital on company
	No.	%	mil. ROL	%	mil. ROL
0	1	2	3	4	5
<b>Total ROMÂNIA</b>	<b>6276</b>	<b>100,0</b>	<b>209142,9</b>	<b>100,0</b>	<b>33,5</b>
ALBA	84	1,3	54,1	0,0	0,6
ARAD	157	2,5	139,3	0,1	0,9
ARGES	159	2,5	295,0	0,1	1,9
BACAU	136	2,2	129,8	0,1	1,0
BIHOR	201	3,2	1003,0	0,5	5,0
BISTRITA-NASAUD	57	0,9	50,8	0,0	0,9
BOTOSANI	53	0,8	72,3	0,0	1,4
BRASOV	200	3,2	2551,6	1,2	12,8
BRAILA	95	1,5	59,8	0,0	0,6
BUZAU	102	1,6	12720,4	6,1	124,7
CARAS-SEVERIN	82	1,3	249,4	0,1	3,0
CALARASI	64	1,0	128,5	0,1	2,0
CLUJ	281	4,5	482,6	0,2	1,7
CONSTANTA	224	3,6	611,8	0,3	2,8
COVASNA	51	0,8	16,4	***	0,3
DAMBOVITA	86	1,4	63,6	0,0	0,7
DOLJ	172	2,7	258,0	0,1	1,5
GALATI	186	3,0	240,1	0,1	1,3
GIURGIU	45	0,7	72,5	0,0	1,6
GORJ	72	1,1	119,6	0,1	1,7
HARGHITA	78	1,2	67,9	0,0	0,9
HUNEDOARA	150	2,4	108,4	0,1	0,7
IALOMITA	54	0,9	173,0	0,1	3,2
IASI	201	3,2	322,5	0,2	1,6
MARAMURES	158	2,5	138,7	0,1	0,9
MEHEDINTI	59	0,9	130,5	0,1	2,2
MURES	138	2,2	52,9	0,0	0,4
NEAMT	128	2,0	3105,9	1,5	24,5
OLT	75	1,2	6600,6	3,2	88,0
PRAHOVA	164	2,6	1060,7	0,5	6,5
SALAJ	74	1,2	77,8	0,0	1,1
SATU MARE	91	1,4	105,1	0,1	1,2
SIBIU	128	2,0	308,6	0,1	2,4
SUCEAVA	148	2,4	1777,1	0,8	12,2
TELEORMAN	67	1,1	30,6	0,0	0,5
TIMIS	255	4,1	76759,9	36,7	302,2
TULCEA	49	0,8	11,4	***	0,2
VASLUI	42	0,7	60,0	0,0	1,4
VALCEA	77	1,2	31,1	0,0	0,4
VRANCEA	67	1,1	11227,7	5,4	167,6
MUN. BUCURESTI	1415	22,5	83516,7	39,9	59,5
ILFOV	151	2,4	4157,0	2,0	27,5

*Note: The average does not include filials because according to the Law no.31/1990 they are not juridical persons*

*\*\*\* Less than 0,01%*

**Number of registered companies and the amount  
of subscribed capital by category,  
in January 2006**

Company type	Total registered companies		Subscribed capital		Average subscribed capital on company
	No.	%	mil. ROL	%	mil. ROL
0	1	2	3	4	5
<b>Total ROMÂNIA</b>	<b>6276</b>	<b>100,0</b>	<b>209142,9</b>	<b>100,0</b>	<b>33,5</b>
SNC	1	0,0	1,0	***	1,0
SCS					
SA	43	0,7	56454,7	27,0	2171,3
SRL	6232	99,3	152687,2	73,0	24,6
SCA					

**Note:** The average does not include filials because according to the Law no.31/1990 they are not juridical persons

\*\*\* Less than 0,01%

Diagram no.5

