



MINISTRY OF JUSTICE

THE NATIONAL TRADE REGISTER OFFICE

București, Bd. Unirii nr. 74, Bl. J3b, tronson II+III, sector 3; Telefon: +40 21 316.08.04, 316.08.10; Fax: +40 21 316.08.03; Cod poștal: 030837
Website: www.onrc.ro; E-mail: onrc@onrc.ro; Cod de identificare Fiscală: 14942091; înregistrat ca operator date personale sub nr.1350

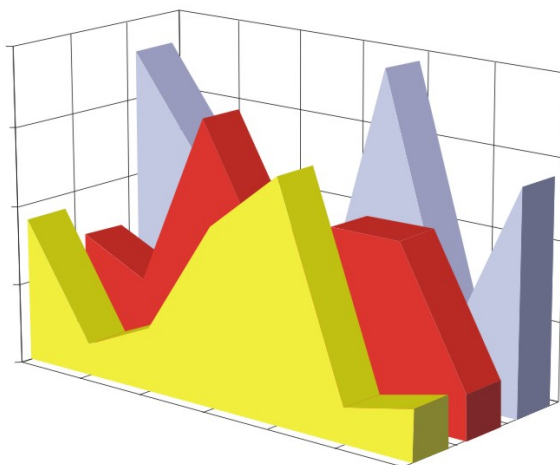
PROCEEDINGS IN THE CENTRAL TRADE REGISTER

STATISTICAL SYNTHESIS

OF

RECORDS IN THE CENTRAL TRADE REGISTER

- the 30th of November 2005 - provisional data -



- ISSUE No. 168 -

MINISTRY OF JUSTICE
THE NATIONAL TRADE REGISTER OFFICE

- Operations of incorporation of companies, changes in statutory documents and strike-off of companies are based on Law No.26/1990 reissued, Law No.31/1990, reissued, OUG No.76/2001, reissued and Methodology Norms No. P/608/1998.

- This paper presents the trend in operations registered in The Trade Register Office attached to the law court of Bucharest and in the Trade Register Offices attached to the law court in each county of Romania.

- Information recorded in the Central Trade Register concern operations compulsory by law to be registered in the trade registers within the 42 trade register offices attached to the law courts.

• No part of the content of this publication, in original or in any modified format, may be reproduced, stored in a retrieval system, or transmitted, in any form or by any means, without the prior permission in writing of The Ministry of Justice – The National Trade Register Office.

• The content of this publication may be referred to in articles, studies, books, as supporting or explanatory data under the condition only, the source of the information to be clearly and precisely specified.

Contents

	Page
1 Explanatory Note	1
2.1 Data for December 1990 – November 2005	3
Table no.1 – Operations registered in the Trade Register, by categories during the period of December 1990 – November 2005, in total by country and counties, rate of categories of operations in total operations country	3
Table no.1.a – Operations registered in the Trade Register, by categories during the period of December 1990 – November 2005, in total by country and counties, counties’ rate in total country	4
Table no. 3 – Number and structure of incorporations in the Trade Register, by years, during the period of December 1990- November 2005	5
Table no.4 – The number of incorporations in the Trade Register, by counties and sources of capital, in the period December 1990 - November 2005	6
Table no. 5 – The number of incorporations in the Trade Register, by counties and categories, during the period of December 1990 – November 2005	7
Table no. 6 – The number of incorporations in the Trade Register, by field of activity and categories, during the period of December 1990 - November 2005	8
2.2 Data for November 2005	10
Table no. 7 – Operations carried on with the Trade Registers, by counties and categories, in November 2005	10
Table no. 8 – The number of incorporations in the Trade Register, by counties and sources of capital, in November 2005	11
Table no. 9 – The number of incorporations in the Trade Register, by counties and category in November 2005	12
Table no. 10 –The number of incorporations in the Trade Register, by field of activity and categories in November 2005	13
Table no. 11 – Number of companies registered and the amount of subscribed capital, by county in November 2005	15
Table no. 12– Number of registered companies and the amount of subscribed capital by category, in November 2005	16
Diagram no. 5 – Average subscribed capital on company in November 2005	16

Explanatory Note

The Trade Register Office is set-up by Law No. 26/1990, reissued and modified by OUG No. 129/2002, became an active institution since December 1990 and is structured in two levels:

- the national level, represented by the National Trade Register Office organised under the Ministry of Justice
- the local level, represented by the 42 trade register offices attached to the law courts and co-ordinated by the National Trade Register Office

The categories of businessmen compulsory to register in the trade register are:

- natural persons tradesmen and family associations doing usually commercial acts, commercial companies, national companies, companies under state supervision, and co-operative organisations
- subsidiaries registered as commercial companies and legal persons following the legal proceedings of set-up, activity and incorporation according to the type of the legally set-up company.

Usual Terms:

- incorporation – represents the registration of the company in the trade registry awarding the quality of legal person.

- other statutory documents – represent the official registration of the changes occurred in a company's life, such as: changes in headquarters' address, increase or decrease of the issued capital, merger, liquidation, strike-off, etc.

- strike-off – represents the removal of a company from the trade registry, due to dissolution and liquidation, being also the very moment the company loses its quality of legal person. Data also include the companies under the provisions of Law No. 314/2001.

- change of certificate – represents the obligation of companies set-up before OGU No. 76/2001 republished came in force, to request the incorporation certificate and fiscal registration certificate to be replaced with the new registration certificate containing the given unique registration code.

The ratio of these changes is being calculated as a proportion between the effective number of changes and the number of active companies due to operate the change.

- active company from the legal point of view – a company registered in the trade register and which is not affected by any of the situations leading to the temporary or permanent loss of this status (e.g. dissolution, liquidation, strike-off)

- operations represent all the records in the trade registry including incorporations, other statutory documents and strike-off of companies, irrespective of the object of activity, company's type and origin of the subscribed capital (local or foreign investment).

• **Terms used in tables and charts**

➤ **Number of companies:** represents, depending on the specific table, the number of companies incorporated in the related period, the number of companies being struck-off from the trade registry.

➤ **Amount of the subscribed capital:**

- **total, in local currency:** the amount of the subscribed capital resulted from totalising the amount subscribed (in cash and in kind) in local currency (ROL)

➤ **Regional development:**

<i>North-East:</i>	Suceava, Botoșani, Neamț, Iași, Bacău, Vaslui.
<i>South-East:</i>	Vrancea, Galați, Buzău, Brăila, Tulcea, Constanța.
<i>South-Muntenia:</i>	Argeș, Dâmbovița, Prahova, Teleorman, Giurgiu, Călărași, Ialomița.
<i>South-West Oltenia:</i>	Gorj, Vâlcea, Dolj, Mehedinți, Olt.
<i>West:</i>	Arad, Caraș-Severin, Hunedoara, Timiș.
<i>North-West:</i>	Bihor, Bistrița, Cluj, Satu Mare, Sălaj, Maramureș.
<i>Center:</i>	Alba, Brașov, Covasna, Harghita, Mureș, Sibiu.
<i>Bucharest-Ilfov:</i>	București, Ilfov.

CAEN code – The Classification of Activities in the National Economy was approved by HG No. 656/1997, modified by Order No 601 of the President of National Institute of Statistics being compatible with the international classification used in statistic reports and official documents. Activities are ranked upon homogeneity principle by sections, divisions, groups and classes.

Common abbreviations

- **PF** - Natural Persons Tradesman
- **AF** - Family association
- **SNC** - General Partnership
- **SCS** - Limited Partnership
- **SA** - Joint stock company
- **SRL** - Limited liability company
- **RA** - Company Under State Supervision
- **OC** - Co-operative organisation

Source:

The integrated IT system of the trade registry is designed by The National Trade Registry Office according to the provisions of the related legislation in force. The source of information is the computerised system of the trade registers handled by the Trade Register Offices attached to the law courts.

Table no. 1

**Operations registered in the Trade Register, by categories
during the period of December 1990 - November 2005 in total by country and counties,
- rate of categories of operations in total operations/country -**

Counties	Total of registered operations		out of which :									
			Registered companies		Changes in statutory documents		out of which :				Strike off companies	
	of liquidation, dissolution						out of which :					
	No.	%	No.	%	No.	%	No.	%	No.	%	No.	%
0	1	2	3	4	5	6	7	8	9	10	11	12
Total ROMÂNIA	6140374	100,0	1411277	100,0	4432631	100,0	10147	100,0	165855	100,0	296466	100,0
ALBA	84287	1,4	21814	1,5	60597	1,4	347	3,4	3596	2,2	1876	0,6
ARAD	135843	2,2	33957	2,4	95378	2,2	436	4,3	2974	1,8	6508	2,2
ARGES	149592	2,4	36442	2,6	107382	2,4	222	2,2	4219	2,5	5768	1,9
BACAU	145802	2,4	36129	2,6	103181	2,3	1010	10,0	5280	3,2	6492	2,2
BIHOR	189006	3,1	41184	2,9	140583	3,2	316	3,1	4598	2,8	7239	2,4
BISTRITA-NASAUD	78197	1,3	17375	1,2	56804	1,3	67	0,7	1120	0,7	4018	1,4
BOTOSANI	56646	0,9	17521	1,2	36636	0,8	62	0,6	1563	0,9	2489	0,8
BRASOV	202366	3,3	43663	3,1	151613	3,4	176	1,7	4892	2,9	7090	2,4
BRAILA	80011	1,3	19978	1,4	58634	1,3	46	0,5	2540	1,5	1399	0,5
BUZAU	114036	1,9	26269	1,9	82557	1,9	187	1,8	2109	1,3	5210	1,8
CARAS-SEVERIN	81908	1,3	17322	1,2	58170	1,3	129	1,3	1922	1,2	6416	2,2
CALARASI	54349	0,9	14477	1,0	37594	0,8	83	0,8			2278	0,8
CLUJ	266809	4,3	63892	4,5	199044	4,5	259	2,6			3873	1,3
CONSTANTA	267334	4,4	59950	4,2	190937	4,3	938	9,2	10621	6,4	16447	5,5
COVASNA	58323	0,9	12061	0,9	43370	1,0	51	0,5	1175	0,7	2892	1,0
DAMBOVITA	96874	1,6	26511	1,9	60652	1,4	55	0,5	2951	1,8	9711	3,3
DOLJ	159303	2,6	37574	2,7	113268	2,6	211	2,1	5633	3,4	8461	2,9
GALATI	174519	2,8	33744	2,4	131858	3,0	318	3,1	5370	3,2	8917	3,0
GIURGIU	40826	0,7	11396	0,8	26223	0,6	51	0,5			3207	1,1
GORJ	82074	1,3	17075	1,2	61129	1,4	97	1,0	2667	1,6	3870	1,3
HARGHITA	86924	1,4	20792	1,5	64492	1,5	98	1,0			1640	0,6
HUNEDOARA	115568	1,9	29412	2,1	77933	1,8	145	1,4	2944	1,8	8223	2,8
IALOMITA	60181	1,0	13541	1,0	43015	1,0	78	0,8	1586	1,0	3625	1,2
IASI	209740	3,4	42598	3,0	159252	3,6	201	2,0	4224	2,5	7890	2,7
MARAMURES	123253	2,0	36602	2,6	81101	1,8	172	1,7	2924	1,8	5550	1,9
MEHEDINTI	64381	1,0	16424	1,2	42411	1,0	67	0,7	3085	1,9	5546	1,9
MURES	149334	2,4	35588	2,5	108327	2,4	129	1,3	2942	1,8	5419	1,8
NEAMT	121347	2,0	31793	2,3	83601	1,9	61	0,6	2435	1,5	5953	2,0
OLT	88038	1,4	20649	1,5	60362	1,4	63	0,6	2033	1,2	7027	2,4
PRAHOVA	219679	3,6	46421	3,3	164894	3,7	275	2,7	3934	2,4	8364	2,8
SALAJ	48629	0,8	13267	0,9	32710	0,7	37	0,4	683	0,4	2652	0,9
SATU MARE	97899	1,6	23588	1,7	67541	1,5	34	0,3	2934	1,8	6770	2,3
SIBIU	135676	2,2	26915	1,9	104563	2,4	86	0,8	2583	1,6	4198	1,4
SUCEAVA	154022	2,5	36271	2,6	105396	2,4	32	0,3	2387	1,4	12355	4,2
TELEORMAN	69643	1,1	16235	1,2	51714	1,2	69	0,7	1504	0,9	1694	0,6
TIMIS	239380	3,9	48004	3,4	181857	4,1	297	2,9	7273	4,4	9519	3,2
TULCEA	62715	1,0	14681	1,0	45465	1,0	147	1,4	1002	0,6	2569	0,9
VASLUI	69104	1,1	18529	1,3	46260	1,0	41	0,4	1385	0,8	4315	1,5
VALCEA	100901	1,6	23864	1,7	71988	1,6	104	1,0	1888	1,1	5049	1,7
VRANCEA	78672	1,3	17716	1,3	58935	1,3			1594	1,0	2021	0,7
MUN. BUCURESTI	1252516	20,4	269266	19,1	914597	20,6	2905	28,6	51406	31,0	68653	23,2
ILFOV	74667	1,2	20787	1,5	50607	1,1	45	0,4	1879	1,1	3273	1,1

*) according to the effect of Law No. 314/2001, art.1 și art. 6

*** Less than 0,01%

Table no. 2

**Operations registered in the Trade Register, by categories
during the period of December 1990 - November 2005, in total by country and counties,
- rate of categories of operations in total operations/country -**

Counties	Total of registered operations		out of which :									
			Registered companies		Changes in statutory documents		out of which :				Strike off companies	
	of liquidation, dissolution						out of which :					
	No.	%	No.	%	No.	%	No.	%	No.	%	No.	%
0	1	2	3	4	5	6	7	8	9	10	11	12
Total ROMÂNIA	6140374	100,0	1411277	23,0	4432631	72,2	10147	0,2	165855	2,7	296466	4,8
ALBA	84287	100,0	21814	25,9	60597	71,9	347	0,4	3596	4,3	1876	2,2
ARAD	135843	100,0	33957	25,0	95378	70,2	436	0,3	2974	2,2	6508	4,8
ARGES	149592	100,0	36442	24,4	107382	71,8	222	0,1	4219	2,8	5768	3,9
BACAU	145802	100,0	36129	24,8	103181	70,8	1010	0,7	5280	3,6	6492	4,5
BIHOR	189006	100,0	41184	21,8	140583	74,4	316	0,2	4598	2,4	7239	3,8
BISTRITA-NASAUD	78197	100,0	17375	22,2	56804	72,6	67	0,1	1120	1,4	4018	5,1
BOTOSANI	56646	100,0	17521	30,9	36636	64,7	62	0,1	1563	2,8	2489	4,4
BRASOV	202366	100,0	43663	21,6	151613	74,9	176	0,1	4892	2,4	7090	3,5
BRAILA	80011	100,0	19978	25,0	58634	73,3	46	0,1	2540	3,2	1399	1,7
BUZAU	114036	100,0	26269	23,0	82557	72,4	187	0,2	2109	1,8	5210	4,6
CARAS-SEVERIN	81908	100,0	17322	21,1	58170	71,0	129	0,2	1922	2,3	6416	7,8
CALARASI	54349	100,0	14477	26,6	37594	69,2	83	0,2			2278	4,2
CLUJ	266809	100,0	63892	23,9	199044	74,6	259	0,1			3873	1,5
CONSTANTA	267334	100,0	59950	22,4	190937	71,4	938	0,4	10621	4,0	16447	6,2
COVASNA	58323	100,0	12061	20,7	43370	74,4	51	0,1	1175	2,0	2892	5,0
DAMBOVITA	96874	100,0	26511	27,4	60652	62,6	55	0,1	2951	3,0	9711	10,0
DOLJ	159303	100,0	37574	23,6	113268	71,1	211	0,1	5633	3,5	8461	5,3
GALATI	174519	100,0	33744	19,3	131858	75,6	318	0,2	5370	3,1	8917	5,1
GIURGIU	40826	100,0	11396	27,9	26223	64,2	51	0,1			3207	7,9
GORJ	82074	100,0	17075	20,8	61129	74,5	97	0,1	2667	3,2	3870	4,7
HARGHITA	86924	100,0	20792	23,9	64492	74,2	98	0,1			1640	1,9
HUNEDOARA	115568	100,0	29412	25,4	77933	67,4	145	0,1	2944	2,5	8223	7,1
IALOMITA	60181	100,0	13541	22,5	43015	71,5	78	0,1	1586	2,6	3625	6,0
IASI	209740	100,0	42598	20,3	159252	75,9	201	0,1	4224	2,0	7890	3,8
MARAMURES	123253	100,0	36602	29,7	81101	65,8	172	0,1	2924	2,4	5550	4,5
MEHEDINTI	64381	100,0	16424	25,5	42411	65,9	67	0,1	3085	4,8	5546	8,6
MURES	149334	100,0	35588	23,8	108327	72,5	129	0,1	2942	2,0	5419	3,6
NEAMT	121347	100,0	31793	26,2	83601	68,9	61	0,1	2435	2,0	5953	4,9
OLT	88038	100,0	20649	23,5	60362	68,6	63	0,1	2033	2,3	7027	8,0
PRAHOVA	219679	100,0	46421	21,1	164894	75,1	275	0,1	3934	1,8	8364	3,8
SALAJ	48629	100,0	13267	27,3	32710	67,3	37	0,1	683	1,4	2652	5,5
SATU MARE	97899	100,0	23588	24,1	67541	69,0	34	0,0	2934	3,0	6770	6,9
SIBIU	135676	100,0	26915	19,8	104563	77,1	86	0,1	2583	1,9	4198	3,1
SUCEAVA	154022	100,0	36271	23,5	105396	68,4	32	0,0	2387	1,5	12355	8,0
TELEORMAN	69643	100,0	16235	23,3	51714	74,3	69	0,1	1504	2,2	1694	2,4
TIMIS	239380	100,0	48004	20,1	181857	76,0	297	0,1	7273	3,0	9519	4,0
TULCEA	62715	100,0	14681	23,4	45465	72,5	147	0,2	1002	1,6	2569	4,1
VASLUI	69104	100,0	18529	26,8	46260	66,9	41	0,1	1385	2,0	4315	6,2
VALCEA	100901	100,0	23864	23,7	71988	71,3	104	0,1	1888	1,9	5049	5,0
VRANCEA	78672	100,0	17716	22,5	58935	74,9			1594	2,0	2021	2,6
MUN. BUCURESTI	1252516	100,0	269266	21,5	914597	73,0	2905	0,2	51406	4,1	68653	5,5
ILFOV	74667	100,0	20787	27,8	50607	67,8	45	0,1	1879	2,5	3273	4,4

*) according to the effect of Law No. 314/2001, art.1 și art. 6

*** Less than 0,01%

Table no.3

**Number and structure of incorporations in the Trade Register, by years,
during the period of December 1990 - October 2005**

Period (year, month)	Registered companies		Percentage	
	No.	%	%	
0	1	2	3	
Total, 31 October 2005, out of which	1411277	100,00		
Year 1990	81	0,01		
Year 1991	95840	6,79		
Year 1992	137456	9,74		
Year 1993	117078	8,30		
Year 1994	137445	9,74		
Year 1995	65479	4,64		
Year 1996	62089	4,40		
Year 1997	55663	3,94		
Year 1998	63878	4,53		
Year 1999	57197	4,05		
Year 2000	57291	4,06		
Year 2001	61265	4,34		
Year 2002	84780	6,01		
Year 2003	123582	8,76		
Year 2004	144284	10,22		
Year 2005 (1.I - 31.XI), out of which :	147869	10,48		92,4
January	10148			6,9
February	16238			11,0
March	20378			13,8
April	16782			11,3
May	14305			9,7
June	14380			9,7
July	11522			7,79
August	11453			7,75
September	10961			7,41
October	10404			7,04
November	11298			7,64

Note: Column 2 reveals the annual structure of incorporations; column 3 reveals the structure by months during the current year.

*** Less than 0,01%

Diagram no.1

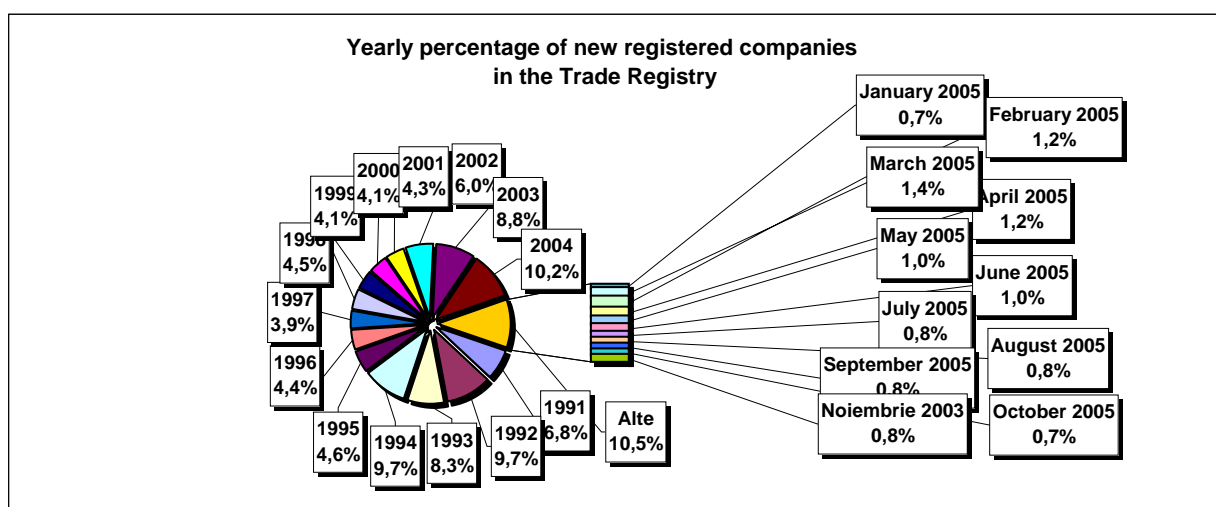


Table no. 4

The number of incorporations in the Trade Register, by counties and sources of capital, in the period December 1990 - November 2005

Counties	Total		out of which:					Ranking by: *	
			Private capital			State majority capital			Mixed capital (state+private)
			out of which:			out of which:			
			PF+AF	Companies	OC	RA	Companies		Companies
No.	%	No.	No.	No.	No.	No.	No.		
0	1	2	3	4	5	6	7	8	9
Total ROMÂNIA	1411277	100,0	354576	1039079	5387	1321	2358	8556	X
ALBA	21814	1,5	7367	14054	141	35	47	170	24
ARAD	33958	2,4	13084	20318	157	26	40	333	15
ARGES	36442	2,6	11850	24214	168	29	29	152	11
BACAU	36129	2,6	11976	23696	158	34	42	223	13
BIHOR	41184	2,9	8157	32476	146	36	62	307	8
BISTRITA-NASAUD	17375	1,2	6167	10953	98	19	29	109	32
BOTOSANI	17521	1,2	7770	9317	122	21	172	119	31
BRASOV	43663	3,1	8610	34643	114	40	87	169	6
BRAILA	19978	1,4	4889	14757	96	28	43	165	28
BUZAU	26269	1,9	7484	18445	142	25	42	131	21
CARAS-SEVERIN	17322	1,2	5999	10986	102	33	65	137	33
CALARASI	14477	1,0	4170	10031	86	18	77	95	38
CLUJ	63892	4,5	15556	47833	150	52	40	261	2
CONSTANTA	59950	4,2	11282	47826	203	50	49	540	3
COVASNA	12061	0,9	3889	7940	67	24	32	109	41
DAMBOVITA	26511	1,9	12269	13852	134	29	75	152	20
DOLJ	37574	2,7	7057	30057	162	40	57	201	9
GALATI	33744	2,4	6265	27120	135	30	51	143	16
GIURGIU	11396	0,8	2619	8457	80	21	109	110	42
GORJ	17075	1,2	3746	12912	184	50	83	100	34
HARGHITA	20792	1,5	7722	12690	85	23	43	229	25
HUNEDOARA	29412	2,1	7715	21205	81	37	92	282	18
IALOMITA	13541	1,0	5211	8104	74	15	46	91	39
IASI	42598	3,0	11444	30543	164	33	70	344	7
MARAMURES	36602	2,6	15060	21222	121	37	39	123	10
MEHEDINTI	16424	1,2	5023	11176	82	19	26	98	35
MURES	35588	2,5	13132	22071	154	30	34	167	14
NEAMT	31793	2,3	11656	19752	161	29	30	165	17
OLT	20649	1,5	8241	12034	161	26	64	123	27
PRAHOVA	46421	3,3	13874	31981	177	50	68	271	5
SALAJ	13267	0,9	5125	7926	107	19	28	62	40
SATU MARE	23588	1,7	7372	15933	88	19	42	134	23
SIBIU	26915	1,9	6325	20176	117	31	108	158	19
SUCEAVA	36271	2,6	17368	18387	202	30	64	220	12
TELEORMAN	16235	1,2	5498	10340	152	21	43	181	36
TIMIS	48004	3,4	7131	40283	140	37	68	345	4
TULCEA	14681	1,0	4689	9654	66	18	42	212	37
VASLUI	18529	1,3	9117	9111	109	16	41	135	29
VALCEA	23864	1,7	9376	14130	168	40	37	113	22
VRANCEA	17716	1,3	5312	12145	103	16	27	113	30
MUN. BUCURESTI	269265	19,1	15411	252394	138	115	103	1104	1
ILFOV	20787	1,5	2568	17935	92	20	12	160	26

*) The total number of incorporations (col 1)

*** Less than 0,01%

Table no. 5

**The number of incorporations in the Trade Register,
by counties and categories, during the period of
December 1990 - November 2005**

County	Total		out of which:						RA	OC
			PF+AF	companies: 1049993						
	SNC	SCS		SRL	SA	No.	No.			
	No.	%	No.	No.	No.			No.	No.	No.
0	1	2	3	4	5	6	7	8	9	
Total ROMÂNIA	1411277	100,0	354576	32637	1558	984833	30959	1321	5387	
ALBA	21814	1,5	7367	888	11	12834	538	35	141	
ARAD	33957	2,4	13084	51	10	19984	644	26	157	
ARGES	36442	2,6	11850	107	14	23485	789	29	168	
BACAU	36129	2,6	11976	1299	4	21956	701	34	158	
BIHOR	41184	2,9	8157	125	47	31801	872	36	146	
BISTRITA-NASAUD	17375	1,2	6167	146	21	10523	401	19	98	
BOTOSANI	17521	1,2	7770	468	1	8700	439	21	122	
BRASOV	43663	3,1	8610	239	19	33829	812	40	114	
BRAILA	19978	1,4	4889	376	12	14078	499	28	96	
BUZAU	26269	1,9	7484	3747	46	14281	544	25	142	
CARAS-SEVERIN	17322	1,2	5999	117	8	10609	454	33	102	
CALARASI	14477	1,0	4170	609	3	9249	342	18	86	
CLUJ	63892	4,5	15556	2110	18	44819	1187	52	150	
CONSTANTA	59950	4,2	11282	311	23	46652	1429	50	203	
COVASNA	12061	0,9	3889	148	4	7639	290	24	67	
DAMBOVITA	26511	1,9	12269	60	8	13536	475	29	134	
DOLJ	37574	2,7	7057	1560	8	27905	842	40	162	
GALATI	33744	2,4	6265	1574	6	24927	807	30	135	
GIURGIU	11396	0,8	2619	35	8	8321	312	21	80	
GORJ	17075	1,2	3746	28	1	12598	468	50	184	
HARGHITA	20792	1,5	7722	62	6	12420	474	23	85	
HUNEDOARA	29412	2,1	7715	1166	98	19667	648	37	81	
IALOMITA	13541	1,0	5211	266	11	7634	330	15	74	
IASI	42598	3,0	11444	506	111	29368	970	33	164	
MARAMURES	36602	2,6	15060	1926	23	18862	572	37	121	
MEHEDINTI	16424	1,2	5023	427	3	10553	317	19	82	
MURES	35588	2,5	13132	37	34	21569	632	30	154	
NEAMT	31793	2,3	11656	3293	30	15979	645	29	161	
OLT	20649	1,5	8241	1611	1	10133	476	26	161	
PRAHOVA	46421	3,3	13874	3121	12	28333	854	50	177	
SALAJ	13267	0,9	5125	600	4	7136	276	19	107	
SATU MARE	23588	1,7	7372	283	5	15368	453	19	88	
SIBIU	26915	1,9	6325	775	48	18996	623	31	117	
SUCEAVA	36271	2,6	17368	438	8	17660	565	30	202	
TELEORMAN	16235	1,2	5498	272	399	9494	399	21	152	
TIMIS	48004	3,4	7131	606	27	38861	1202	37	140	
TULCEA	14681	1,0	4689	1363	114	7968	463	18	66	
VASLUI	18529	1,3	9117	90	11	8793	393	16	109	
VALCEA	23864	1,7	9376	363	6	13448	463	40	168	
VRANCEA	17716	1,3	5312	356	10	11485	434	16	103	
MUN. BUCURESTI	269266	19,1	15411	1029	295	245909	6368	115	138	
ILFOV	20787	1,5	2568	49	30	17471	557	20	92	

Table no. 6

**The number of incorporations in the Trade Register, by field of activity*
during the period of December 1990 - November 2005**

CAEN segment	Field of activity	Total		out of which:						
				PF+AF	companies:				RA	OC
					1049993					
					SNC	SCS	SRL	SA		
No.	%	No.	No.	No.	No.	No.	No.	No.		
0	1	2	3	4	5	6	7	8	9	10
	Total ROMANIA	1411277	100,0	354576	32637	1558	984833	30959	1321	5387
1	Agriculture, hunting and related service activities	54494	3,9	10513	2023	44	37978	3768	51	117
2	Forestry, logging and related service activities	7512	0,5	945	152	3	6106	219	79	8
5	Fishing, fish farming and related service activities	2323	0,2	1236	17	3	1014	53		
10	Mining of coal and lignite; extraction of peat	105	0,0	2			68	31	4	
11	Extraction of crude petroleum and natural gas; service activities incidental to oil and gas extraction, excluding surveying	311	0,0	3	1		140	121	46	
12	Mining of uranium and thorium ores	133	0,0	32			95	6		
13	Mining of metal ores	522	0,0	163			296	55	8	
14	Other mining and quarrying	1386	0,1	105	9	1	1101	167	2	1
15	Manufacture of food products and beverages	71259	5,0	13420	3260	149	52345	1832	5	248
16	Manufacture of tobacco products	285	0,0	47			206	31	1	
17	Manufacture of textiles	11280	0,8	2245	556	16	7913	405		145
18	Manufacture of wearing apparel; dressing and dyeing of fur	19880	1,4	4448	875	38	13858	355	1	305
19	Tanning and dressing of leather; manufacture of luggage, handbags, saddlery, harness and footwear	5003	0,4	855	112	6	3856	122	1	51
20	Manufacture of wood and of products of wood and cork, except furniture; manufacture of articles of straw and plaiting materials	23330	1,7	8087	575	29	14093	495	9	42
21	Manufacture of pulp, paper and paper products	1657	0,1	107	21	1	1418	97		13
22	Publishing, printing and reproduction of recorded media	11023	0,8	883	317	21	9381	397	14	10
23	Manufacture of coke, refined petroleum products and nuclear fuel	250	0,0	24			190	34	2	
24	Manufacture of chemicals and chemical products	3533	0,3	114	89	1	2943	374	6	6
25	Manufacture of rubber and plastic products	5690	0,4	536	313	7	4553	256		24
26	Manufacture of other non-metallic mineral products	8259	0,6	2472	212	6	5172	379	5	13
27	Manufacture of basic metals	2363	0,2	164	39	3	1941	206	3	7
28	Manufacture of fabricated metal products, except machinery and equipment	15155	1,1	3403	361	23	10577	718	11	62
29	Manufacture of machinery and equipment n.e.c.	3585	0,3	97	44	7	2995	418	19	5
30	Manufacture of office machinery and computers	1730	0,1	15	25	4	1606	80		
31	Manufacture of electrical machinery and apparatus n.e.c.	1811	0,1	104	44	6	1508	143		6
32	Manufacture of radio, television and communication equipment and apparatus	820	0,1	52	14	4	676	73		1
33	Manufacture of medical, precision and optical instruments, watches and clocks	2296	0,2	551	17	2	1624	98		4
34	Manufacture of motor vehicles, trailers and semi-trailers	854	0,1	29	31	3	667	122		2
35	Manufacture of other transport equipment	1739	0,1	261	86	7	1189	121	73	2
36	Manufacture of furniture; manufacturing n.e.c.	14135	1,0	3970	284	16	9374	328	5	158
37	Recycling	4433	0,3	393	51	5	3813	170		1
40	Electricity, gas, steam and hot water supply	2795	0,2	833	3	1	1373	497	88	
41	Collection, purification and distribution of water	3519	0,2	1616	2		1640	188	73	
45	Construction	74512	5,3	19852	611	42	51491	2386	53	77

*)Field of activity declared when registered, according to CAEN classification

Table no. 6
(continuing)

**The number of incorporations in the Trade Register, by field of activity*
and categories, during the period of December 1990 - November 2005**

CAEN segment	Field of activity	Total		out of which:						
				PF+AF	companies: 1049993				RA	OC
					SNC	SCS	SRL	SA		
					No.	No.	No.	No.		
0	1	2	3	4	5	6	7	8	9	10
	Total ROMÂNIA	1411277	100,0	354576	32637	1558	984833	30959	1321	5387
50	Sale, maintenance and repair of motor vehicles and motorcycles; retail sale of automotive fuel	50054	3,5	7641	1244		40066	1022	5	42
51	Wholesale trade and commission trade, except of motor vehicles and motorcycles	188049	13,3	14976	4523	150	164823	3261	35	281
52	Retail trade, except of motor vehicles and motorcycles; repair of personal and household goods	470314	33,3	164906	11914	556	288074	2480	5	2378
55	Hotels and restaurants	53915	3,8	12974	1635	126	38243	769	73	95
60	Land transport; transport via pipelines	72329	5,1	32673	844	36	37685	1048	33	10
61	Water transport	809	0,1	147	82	8	437	64	70	1
62	Air transport	282	0,0	17			211	44	10	
63	Supporting and auxiliary transport activities; activities of travel agencies	9212	0,7	552	220	14	7889	430	96	11
64	Post and telecommunications	5896	0,4	392	11	1	5187	291	11	3
65	Financial intermediation, except insurance and pension funding	5625	0,4	143	15		2395	2038	2	1032
66	Insurance and pension funding, except compulsory social security	1948	0,1	605	1		501	840		1
67	Activities auxiliary to financial intermediation	5920	0,4	1233	6	2	4399	272		8
70	Real estate activities	16519	1,2	643	28	8	15275	541	17	7
71	Renting of machinery and equipment without operator and of personal and household goods	2888	0,2	584	116	8	2017	92	70	1
72	Computer and related activities	18896	1,3	2896	119	13	15481	382	2	3
73	Research and development	1587	0,1	234	11	2	1127	168	43	2
74	Other business activities	90314	6,4	18219	784	73	69479	1592	106	60
75	Public administration and defence; compulsory social security	353	0,0	87	5		214	25	21	1
80	Education	5833	0,4	3039	62	5	2662	65		
85	Health and social work	14691	1,0	2062	233	15	12298	79	3	1
90	Sewage and refuse disposal, sanitation and similar activities	756	0,1	77	13	2	542	102	18	
91	Activities of membership organizations n.e.c.	206	0,0	90	1		97	15		3
92	Recreational, cultural and sporting activities	13618	1,0	3134	202	14	9906	284	66	12
93	Other service activities	22585	1,6	9297	418	42	12320	305	76	126
95	Activities of households as employers of domestic staff	638	0,0	343	6	1	284	3		1
96	Extra-territorial organizations and bodies	3	0,0	3						

*)Field of activity declared when registered, according to CAEN classification

Table no. 7

**Operations carried on with the Trade Registers,
by counties and categories,
in November 2005**

County	Total of operations carried on		out of which:							
			New incorporations		Changes in statutory documents		out of which: of liquidation, dissolution		Strike off companies	
	No.	%	No.	%	No.	%	No.	%	No.	%
0	1	2	3	4	5	6	7	8	9	10
Total ROMÂNIA	72466	100,0	11298	15,6	57560	79,4	644	0,9	3608	5,0
ALBA	795	100,0	188	23,6	578	72,7	2	0,3	29	3,6
ARAD	1566	100,0	290	18,5	1233	78,7	10	0,6	43	2,7
ARGES	1708	100,0	303	17,7	1380	80,8	11	0,6	25	1,5
BACAU	1046	100,0	266	25,4	692	66,2	12	1,1	88	8,4
BIHOR	2492	100,0	356	14,3	2086	83,7	11	0,4	50	2,0
BISTRITA-NASAUD	1054	100,0	126	12,0	900	85,4	5	0,5	28	2,7
BOTOSANI	447	100,0	113	25,3	329	73,6	2	0,4	5	1,1
BRASOV	3400	100,0	395	11,6	2963	87,1	30	0,9	42	1,2
BRAILA	731	100,0	181	24,8	529	72,4	8	1,1	21	2,9
BUZAU	2005	100,0	193	9,6	1190	59,4	6	0,3	622	31,0
CARAS-SEVERIN	1022	100,0	138	13,5	865	84,6	6	0,6	19	1,9
CALARASI	388	100,0	100	25,8	273	70,4	4	1,0	15	3,9
CLUJ	2776	100,0	552	19,9	2157	77,7	9	0,3	67	2,4
CONSTANTA	2805	100,0	399	14,2	2292	81,7	10	0,4	114	4,1
COVASNA	900	100,0	89	9,9	567	63,0	12	1,3	244	27,1
DAMBOVITA	1981	100,0	212	10,7	1113	56,2	1	0,1	656	33,1
DOLJ	1358	100,0	328	24,2	995	73,3	6	0,4	35	2,6
GALATI	1802	100,0	256	14,2	1461	81,1	104	5,8	85	4,7
GIURGIU	457	100,0	80	17,5	372	81,4	1	0,2	5	1,1
GORJ	901	100,0	145	16,1	741	82,2	5	0,6	15	1,7
HARGHITA	1090	100,0	182	16,7	880	80,7	58	5,3	28	2,6
HUNEDOARA	1006	100,0	241	24,0	746	74,2	8	0,8	19	1,9
IALOMITA	571	100,0	76	13,3	467	81,8	4	0,7	28	4,9
IASI	2862	100,0	347	12,1	2489	87,0	17	0,6	26	0,9
MARAMURES	1148	100,0	240	20,9	796	69,3	39	3,4	112	9,8
MEHEDINTI	406	100,0	125	30,8	271	66,7	3	0,7	10	2,5
MURES	2007	100,0	282	14,1	1646	82,0	11	0,5	79	3,9
NEAMT	2254	100,0	209	9,3	1502	66,6	9	0,4	543	24,1
OLT	655	100,0	120	18,3	502	76,6			33	5,0
PRAHOVA	2239	100,0	375	16,7	1810	80,8	10	0,4	54	2,4
SALAJ	652	100,0	111	17,0	510	78,2	2	0,3	31	4,8
SATU MARE	801	100,0	192	24,0	595	74,3	2	0,2	14	1,7
SIBIU	1607	100,0	295	18,4	1256	78,2	21	1,3	56	3,5
SUCEAVA	3067	100,0	274	8,9	2750	89,7	4	0,1	43	1,4
TELEORMAN	491	100,0	115	23,4	363	73,9	3	0,6	13	2,6
TIMIS	2472	100,0	481	19,5	1972	79,8	4	0,2	19	0,8
TULCEA	419	100,0	93	22,2	305	72,8	2	0,5	21	5,0
VASLUI	850	100,0	104	12,2	726	85,4			20	2,4
VALCEA	1384	100,0	143	10,3	1184	85,5	7	0,5	57	4,1
VRANCEA	930	100,0	134	14,4	773	83,1			23	2,5
MUN. BUCURESTI	14853	100,0	2209	14,9	12492	84,1	179	1,2	152	1,0
ILFOV	1068	100,0	240	22,5	809	75,7	6	0,6	19	1,8

*) by effect of implementation of Law no. 314/2001, art.1 and art. 6

*** Less than 0,01%

Table no. 8

**The number of incorporations in the Trade Register,
by counties and sources of capital,
in November 2005**

County	Total		out of which:					Rnking by: *	
			Private capital			State majority capital			Mixed capital (state+private)
			out of which:			out of which:			Companies
			PF+AF	Companies	OC	RA	Companies		Companies
No.	%	No.	No.	No.	No.	No.	No.		
0	1	2	3	4	5	6	7	8	9
Total ROMÂNIA	11298	100,0	3634	7659	1		3	1	X
ALBA	188	1,7	65	123					24
ARAD	290	2,6	112	178					12
ARGES	303	2,7	118	185					10
BACAU	266	2,4	104	162					15
BIHOR	356	3,2	145	210	1				7
BISTRITA-NASAUD	126	1,1	51	75					31
BOTOSANI	113	1,0	60	53					35
BRASOV	395	3,5	122	273					5
BRAILA	181	1,6	72	109					26
BUZAU	193	1,7	82	111					22
CARAS-SEVERIN	138	1,2	52	86					29
CALARASI	100	0,9	46	54					38
CLUJ	552	4,9	187	365					2
CONSTANTA	399	3,5	79	320					4
COVASNA	89	0,8	35	54					40
DAMBOVITA	212	1,9	86	126					20
DOLJ	328	2,9	125	203					9
GALATI	256	2,3	84	172					16
GIURGIU	80	0,7	33	47					41
GORJ	145	1,3	72	73					27
HARGHITA	182	1,6	91	91					25
HUNEDOARA	241	2,1	75	166					17
IALOMITA	76	0,7	25	51					42
IASI	347	3,1	97	250					8
MARAMURES	240	2,1	61	179					19
MEHEDINTI	125	1,1	56	69					32
MURES	282	2,5	114	168					13
NEAMT	209	1,8	82	127					21
OLT	120	1,1	50	70					33
PRAHOVA	375	3,3	165	210					6
SALAJ	111	1,0	53	58					36
SATU MARE	192	1,7	86	105			1		23
SIBIU	295	2,6	116	179					11
SUCEAVA	274	2,4	160	114					14
TELEORMAN	115	1,0	45	67			2	1	34
TIMIS	481	4,3	132	349					3
TULCEA	93	0,8	51	42					39
VASLUI	104	0,9	42	62					37
VALCEA	143	1,3	53	90					28
VRANCEA	134	1,2	49	85					30
MUN. BUCURESTI	2209	19,6	253	1956					1
ILFOV	240	2,1	48	192					18

*) The total number of incorporations (col 1)

*** Less than 0,01%

Table no.9

**The number of incorporations in the Trade Register,
by counties and category
in November 2005**

County	Total		out of which:						
			PF+AF	companies: 7663				RA	OC
	SNC	SCS		SRL	SA				
	No.	%	No.	No.	No.	No.	No.	No.	
0	1	2	3	4	5	6	7	8	9
Total ROMÂNIA	11298	100,0	3634	1	4	7601	57		1
ALBA	188	1,7	65			122	1		
ARAD	290	2,6	112		1	177			
ARGES	303	2,7	118			183	2		
BACAU	266	2,4	104			157	5		
BIHOR	356	3,2	145			210			1
BISTRITA-NASAUD	126	1,1	51			75			
BOTOSANI	113	1,0	60			51	2		
BRASOV	395	3,5	122			270	3		
BRAILA	181	1,6	72			108	1		
BUZAU	193	1,7	82			111			
CARAS-SEVERIN	138	1,2	52			86			
CALARASI	100	0,9	46			54			
CLUJ	552	4,9	187			364	1		
CONSTANTA	399	3,5	79			318	2		
COVASNA	89	0,8	35			52	2		
DAMBOVITA	212	1,9	86			126			
DOLJ	328	2,9	125			203			
GALATI	256	2,3	84			168	4		
GIURGIU	80	0,7	33			47			
GORJ	145	1,3	72			73			
HARGHITA	182	1,6	91			91			
HUNEDOARA	241	2,1	75			166			
IALOMITA	76	0,7	25			51			
IASI	347	3,1	97			250			
MARAMURES	240	2,1	61			179			
MEHEDINTI	125	1,1	56			67	2		
MURES	282	2,5	114			167	1		
NEAMT	209	1,8	82			127			
OLT	120	1,1	50			70			
PRAHOVA	375	3,3	165			208	2		
SALAJ	111	1,0	53			58			
SATU MARE	192	1,7	86			104	2		
SIBIU	295	2,6	116			178	1		
SUCEAVA	274	2,4	160			113	1		
TELEORMAN	115	1,0	45			70			
TIMIS	481	4,3	132	1	1	345	2		
TULCEA	93	0,8	51		2	39	1		
VASLUI	104	0,9	42			62			
VALCEA	143	1,3	53			90			
VRANCEA	134	1,2	49			85			
MUN. BUCURESTI	2209	19,6	253			1936	20		
ILFOV	240	2,1	48			190	2		

Table no. 10

**The number of incorporations in the Trade Register, by field of activity*
and categories in November 2005**

CAEN segment	Field of activity	Total		out of which:						RA	OC
				PF+AF	companies: 7663						
		SNC	SCS		SRL	SA	No.	No.			
		No.	No.		No.	No.					
0	1	2	3	4	5	6			7	8	9
	Total ROMÂNIA	11298	100,0	3634	1	4	7601	57		1	
1	Agriculture, hunting and related service activities	424	3,8	204			220				
2	Forestry, logging and related service activities	66	0,6	23			43				
5	Fishing, fish farming and related service activities	32	0,3	22			10				
10	Mining of coal and lignite; extraction of peat	3	0,0				3				
11	Extraction of crude petroleum and natural gas; service activities incidental to oil and gas extraction, excluding surveying	2	0,0				2				
12	Mining of uranium and thorium ores										
13	Mining of metal ores	1	0,0				1				
14	Other mining and quarrying	15	0,1				15				
15	Manufacture of food products and beverages	231	2,0	132			98	1			
16	Manufacture of tobacco products										
17	Manufacture of textiles	49	0,4	32			17				
18	Manufacture of wearing apparel; dressing and dyeing of fur	99	0,9	40			59				
19	Tanning and dressing of leather; manufacture of luggage, handbags, saddlery, harness and footwear	21	0,2	2			19				
20	Manufacture of wood and of products of wood and cork, except furniture; manufacture of articles of straw and plaiting materials	149	1,3	82			67				
21	Manufacture of pulp, paper and paper products	8	0,1	1			7				
22	Publishing, printing and reproduction of recorded media	85	0,8	3			82				
23	Manufacture of coke, refined petroleum products and nuclear fuel	1	0,0				1				
24	Manufacture of chemicals and chemical products	9	0,1				7	2			
25	Manufacture of rubber and plastic products	42	0,4	4			38				
26	Manufacture of other non-metallic mineral products	45	0,4	12			33				
27	Manufacture of basic metals	9	0,1				9				
28	Manufacture of fabricated metal products, except machinery and equipment	143	1,3	59			83	1			
29	Manufacture of machinery and equipment n.e.c.	21	0,2	1			20				
30	Manufacture of office machinery and computers	7	0,1				7				
31	Manufacture of electrical machinery and apparatus n.e.c.	4	0,0				4				
32	Manufacture of radio, television and communication equipment and apparatus	2	0,0				2				
33	Manufacture of medical, precision and optical instruments, watches and clocks	26	0,2	6			20				
34	Manufacture of motor vehicles, trailers and semi- trailers	4	0,0				4				
35	Manufacture of other transport equipment	10	0,1				10				
36	Manufacture of furniture; manufacturing n.e.c.	96	0,8	33			62	1			
37	Recycling	29	0,3	1			28				
40	Electricity, gas, steam and hot water supply	4	0,0				4				
41	Collection, purification and distribution of water	6	0,1	1			3	2			
45	Construction	886	7,8	240			643	3			

*)Field of activity declared when registered, according to CAEN classification

Table no. 10
(continuance)

**The number of incorporations in the Trade Register, by field of activity*
and categories in November 2005**

CAEN segment	Field of activity	Total		out of which:						
				PF+AF	companies: 7663				RA	OC
					SNC	SCS	SRL	SA		
0	1	No.	%	No.	No.	No.	No.	No.	No.	
		2	3	4	5	6	7	8	9	10
	Total ROMÂNIA	11298	100,0	3634	1	4	7601	57		1
50	Sale, maintenance and repair of motor vehicles and motorcycles; retail sale of automotive fuel	332	2,9	88			244			
51	Wholesale trade and commission trade, except of motor vehicles and motorcycles	1259	11,1	289		2	965	3		
52	Retail trade, except of motor vehicles and motorcycles; repair of personal and household goods	2761	24,4	1213			1547	1		
55	Hotels and restaurants	487	4,3	91			396			
60	Land transport; transport via pipelines	746	6,6	356			387	3		
61	Water transport	2	0,0				2			
62	Air transport	2	0,0				2			
63	Supporting and auxiliary transport activities; activities of travel agencies	103	0,9	8			94	1		
64	Post and telecommunications	107	0,9	11			95	1		
65	Financial intermediation, except insurance and pension funding	54	0,5	1			26	27		
66	Insurance and pension funding, except compulsory social security	4	0,0				2	2		
67	Activities auxiliary to financial intermediation	67	0,6				67			
70	Real estate activities	371	3,3				367	3		1
71	Renting of machinery and equipment without operator and of personal and household goods	38	0,3	4			34			
72	Computer and related activities	335	3,0	128			206	1		
73	Research and development	9	0,1	1			8			
74	Other business activities	1399	12,4	304	1	2	1089	3		
75	Public administration and defence; compulsory social security									
80	Education	45	0,4	3			42			
85	Health and social work	144	1,3				144			
90	Sewage and refuse disposal, sanitation and similar activities	16	0,1	4			11	1		
91	Activities of membership organizations n.e.c.									
92	Recreational, cultural and sporting activities	192	1,7	60			131	1		
93	Other service activities	262	2,3	143			119			
95	Activities of households as employers of domestic staff	32	0,3	30			2			
96	Extra-territorial organizations and bodies	2	0,0	2						

*)Field of activity declared when registered, according to CAEN classification

Table no. 11

**Number of companies registered and the amount
of subscribed capital, by county in November 2005**

County	Total registered companies		Subscribed capital		Average subscribed capital on company
	No.	%	mil. ROL	%	mil. ROL
0	1	2	3	4	5
Total ROMÂNIA	7663	100,0	130322,0	100,0	17,1
ALBA	123	1,6	463,3	0,4	3,8
ARAD	178	2,3	148,2	0,1	0,8
ARGES	185	2,4	323,4	0,2	1,7
BACAU	162	2,1	299,8	0,2	1,9
BIHOR	210	2,7	2329,3	1,8	11,1
BISTRITA-NASAUD	75	1,0	2437,3	1,9	32,5
BOTOSANI	53	0,7	383,4	0,3	7,5
BRASOV	273	3,6	2490,4	1,9	9,2
BRAILA	109	1,4	338,7	0,3	3,1
BUZAU	111	1,4	70,7	0,1	0,6
CARAS-SEVERIN	86	1,1	32,4	0,0	0,4
CALARASI	54	0,7	25,8	0,0	0,5
CLUJ	365	4,8	893,3	0,7	2,5
CONSTANTA	320	4,2	625,9	0,5	2,0
COVASNA	54	0,7	168,4	0,1	3,2
DAMBOVITA	126	1,6	574,6	0,4	4,6
DOLJ	203	2,6	482,8	0,4	2,4
GALATI	172	2,2	153,0	0,1	0,9
GIURGIU	47	0,6	78,4	0,1	1,7
GORJ	73	1,0	20,4	0,0	0,3
HARGHITA	91	1,2	101,8	0,1	1,1
HUNEDOARA	166	2,2	328,9	0,3	2,0
IALOMITA	51	0,7	22,2	0,0	0,4
IASI	250	3,3	260,5	0,2	1,0
MARAMURES	179	2,3	158,3	0,1	0,9
MEHEDINTI	69	0,9	68,4	0,1	1,0
MURES	168	2,2	467,3	0,4	2,8
NEAMT	127	1,7	76,7	0,1	0,6
OLT	70	0,9	62,9	0,0	0,9
PRAHOVA	210	2,7	625,2	0,5	3,0
SALAJ	58	0,8	23,2	0,0	0,4
SATU MARE	106	1,4	793,6	0,6	7,5
SIBIU	179	2,3	986,3	0,8	5,6
SUCEAVA	114	1,5	140,5	0,1	1,2
TELEORMAN	70	0,9	402,4	0,3	5,8
TIMIS	349	4,6	11176,2	8,6	32,2
TULCEA	42	0,5	21,2	0,0	0,5
VASLUI	62	0,8	52,9	0,0	0,9
VALCEA	90	1,2	72,5	0,1	0,8
VRANCEA	85	1,1	268,3	0,2	3,2
MUN. BUCURESTI	1956	25,5	97191,7	74,6	50,1
ILFOV	192	2,5	4681,6	3,6	24,5

*Note: The average does not include filials because according to the
Law no.31/1990 they are not juridical persons*

**** Less than 0,01%*

Table no. 12

**Number of registered companies and the amount
of subscribed capital by category,
in November 2005**

Company type	Total registered companies		Subscribed capital		Average subscribed capital on company
	No.	%	mil. ROL	%	mil. ROL
0	1	2	3	4	5
Total ROMÂNIA	7663	100,0	130322,0	100,0	17,1
SNC	1	0,0	5,0	***	5,0
SCS	4	0,1	0,8	***	0,2
SA	57	0,7	13938,6	10,7	464,6
SRL	7601	99,2	116377,7	89,3	15,4
SCA		***		***	-

Note: The average does not include filials because according to the Law no.31/1990 they are not juridical persons

*** Less than 0,01%

Diagram no.5

