



MINISTRY OF JUSTICE

THE NATIONAL TRADE REGISTER OFFICE

București, Bd. Unirii nr. 74, Bl. J3b, tronson II+III, sector 3; Telefon: +40 21 316.08.04, 316.08.10; Fax: +40 21 316.08.03; Cod poștal: 030837
Website: www.onrc.ro; E-mail: onrc@onrc.ro; Cod de identificare Fiscală: 14942091; înregistrat ca operator date personale sub nr.1350

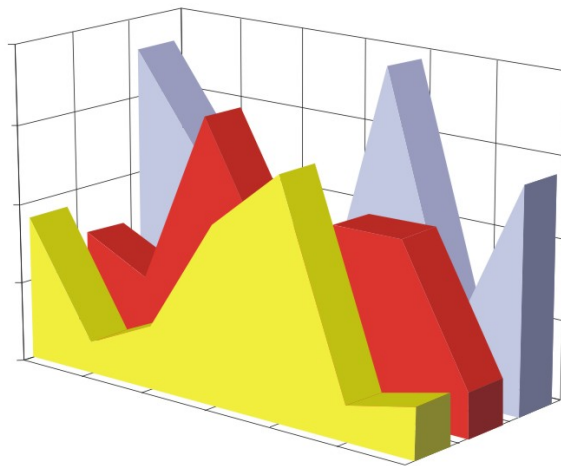
PROCEEDINGS IN THE CENTRAL TRADE REGISTER

STATISTICAL SYNTHESIS

OF

RECORDS IN THE CENTRAL TRADE REGISTER

- the 31th of October 2005 - provisional data -



- ISSUE No. 167 -

MINISTRY OF JUSTICE
THE NATIONAL TRADE REGISTER OFFICE

- Operations of incorporation of companies, changes in statutory documents and strike-off of companies are based on Law No.26/1990 reissued, Law No.31/1990, reissued, OUG No.76/2001, reissued and Methodology Norms No. P/608/1998.

- This paper presents the trend in operations registered in The Trade Register Office attached to the law court of Bucharest and in the Trade Register Offices attached to the law court in each county of Romania.

- Information recorded in the Central Trade Register concern operations compulsory by law to be registered in the trade registers within the 42 trade register offices attached to the law courts.

• No part of the content of this publication, in original or in any modified format, may be reproduced, stored in a retrieval system, or transmitted, in any form or by any means, without the prior permission in writing of The Ministry of Justice – The National Trade Register Office.

• The content of this publication may be referred to in articles, studies, books, as supporting or explanatory data under the condition only, the source of the information to be clearly and precisely specified.

Contents

	Page
1 Explanatory Note	1
2.1 Data for December 1990 – October 2005	3
Table no.1 – Operations registered in the Trade Register, by categories during the period of December 1990 – October 2005, in total by country and counties, rate of categories of operations in total operations country	3
Table no.1.a – Operations registered in the Trade Register, by categories during the period of December 1990 – October 2005, in total by country and counties, counties' rate in total country	4
Table no. 3 – Number and structure of incorporations in the Trade Register, by years, during the period of December 1990- October 2005	5
Table no.4 – The number of incorporations in the Trade Register, by counties and sources of capital, in the period December 1990 - October 2005	6
Table no. 5 – The number of incorporations in the Trade Register, by counties and categories, during the period of December 1990 – October 2005	7
Table no. 6 – The number of incorporations in the Trade Register, by field of activity and categories, during the period of December 1990 - October 2005	8
2.2 Data for October 2005	10
Table no. 7 – Operations carried on with the Trade Registers, by counties and categories, in October 2005	10
Table no. 8 – The number of incorporations in the Trade Register, by counties and sources of capital, in October 2005	11
Table no. 9 – The number of incorporations in the Trade Register, by counties and category in October 2005	12
Table no. 10 –The number of incorporations in the Trade Register, by field of activity and categories in October 2005	13
Table no. 11 – Number of companies registered and the amount of subscribed capital, by county in October 2005	15
Table no. 12– Number of registered companies and the amount of subscribed capital by category, in October 2005	16
Diagram no. 5 – Average subscribed capital on company in October 2005	16

Explanatory Note

The Trade Register Office is set-up by Law No. 26/1990, reissued and modified by OUG No. 129/2002, became an active institution since December 1990 and is structured in two levels:

- the national level, represented by the National Trade Register Office organised under the Ministry of Justice
- the local level, represented by the 42 trade register offices attached to the law courts and co-ordinated by the National Trade Register Office

The categories of businessmen compulsory to register in the trade register are:

- natural persons tradesmen and family associations doing usually commercial acts, commercial companies, national companies, companies under state supervision, and co-operative organisations
- subsidiaries registered as commercial companies and legal persons following the legal proceedings of set-up, activity and incorporation according to the type of the legally set-up company.

Usual Terms:

- incorporation – represents the registration of the company in the trade registry awarding the quality of legal person.

- other statutory documents – represent the official registration of the changes occurred in a company's life, such as: changes in headquarters' address, increase or decrease of the issued capital, merger, liquidation, strike-off, etc.

- strike-off – represents the removal of a company from the trade registry, due to dissolution and liquidation, being also the very moment the company loses its quality of legal person. Data also include the companies under the provisions of Law No. 314/2001.

- change of certificate – represents the obligation of companies set-up before OGU No. 76/2001 republished came in force, to request the incorporation certificate and fiscal registration certificate to be replaced with the new registration certificate containing the given unique registration code.

The ratio of these changes is being calculated as a proportion between the effective number of changes and the number of active companies due to operate the change.

- active company from the legal point of view – a company registered in the trade register and which is not affected by any of the situations leading to the temporary or permanent loss of this status (e.g. dissolution, liquidation, strike-off)

- operations represent all the records in the trade registry including incorporations, other statutory documents and strike-off of companies, irrespective of the object of activity, company's type and origin of the subscribed capital (local or foreign investment).

• **Terms used in tables and charts**

➤ **Number of companies:** represents, depending on the specific table, the number of companies incorporated in the related period, the number of companies being struck-off from the trade registry.

➤ **Amount of the subscribed capital:**

- **total, in local currency:** the amount of the subscribed capital resulted from totalising the amount subscribed (in cash and in kind) in local currency (ROL)

➤ **Regional development:**

<i>North-East:</i>	Suceava, Botoșani, Neamț, Iași, Bacău, Vaslui.
<i>South-East:</i>	Vrancea, Galați, Buzău, Brăila, Tulcea, Constanța.
<i>South-Muntenia:</i>	Argeș, Dâmbovița, Prahova, Teleorman, Giurgiu, Călărași, Ialomița.
<i>South-West Oltenia:</i>	Gorj, Vâlcea, Dolj, Mehedinți, Olt.
<i>West:</i>	Arad, Caraș-Severin, Hunedoara, Timiș.
<i>North-West:</i>	Bihor, Bistrița, Cluj, Satu Mare, Sălaj, Maramureș.
<i>Center:</i>	Alba, Brașov, Covasna, Harghita, Mureș, Sibiu.
<i>Bucharest-Ilfov:</i>	București, Ilfov.

CAEN code – The Classification of Activities in the National Economy was approved by HG No. 656/1997, modified by Order No 601 of the President of National Institute of Statistics being compatible with the international classification used in statistic reports and official documents. Activities are ranked upon homogeneity principle by sections, divisions, groups and classes.

Common abbreviations

- **PF** - Natural Persons Tradesman
- **AF** - Family association
- **SNC** - General Partnership
- **SCS** - Limited Partnership
- **SA** - Joint stock company
- **SRL** - Limited liability company
- **RA** - Company Under State Supervision
- **OC** - Co-operative organisation

Source:

The integrated IT system of the trade registry is designed by The National Trade Registry Office according to the provisions of the related legislation in force. The source of information is the computerised system of the trade registers handled by the Trade Register Offices attached to the law courts.

Table no. 1

**Operations registered in the Trade Register, by categories
during the period of December 1990 - October 2005 in total by country and counties,
- rate of categories of operations in total operations/country -**

Counties	Total of registered operations		out of which :									
			Registered companies		Changes in statutory documents		out of which :				Strike off companies	
	of liquidation, dissolution						out of which :					
	No.	%	No.	%	No.	%	No.	%	No.	%	No.	%
0	1	2	3	4	5	6	7	8	9	10	11	12
Total ROMÂNIA	6067908	100,0	1399979	100,0	4375071	100,0	9694	100,0	165855	100,0	292858	100,0
ALBA	83492	1,4	21626	1,5	60019	1,4	347	3,6	3596	2,2	1847	0,6
ARAD	134277	2,2	33667	2,4	94145	2,2	433	4,5	2974	1,8	6465	2,2
ARGES	147884	2,4	36139	2,6	106002	2,4	215	2,2	4219	2,5	5743	2,0
BACAU	144756	2,4	35863	2,6	102489	2,3	1003	10,3	5280	3,2	6404	2,2
BIHOR	186514	3,1	40828	2,9	138497	3,2	310	3,2	4598	2,8	7189	2,5
BISTRITA-NASAUD	77143	1,3	17249	1,2	55904	1,3	65	0,7	1120	0,7	3990	1,4
BOTOSANI	56199	0,9	17408	1,2	36307	0,8	63	0,6	1563	0,9	2484	0,8
BRASOV	198966	3,3	43268	3,1	148650	3,4	149	1,5	4892	2,9	7048	2,4
BRAILA	79280	1,3	19797	1,4	58105	1,3	39	0,4	2540	1,5	1378	0,5
BUZAU	112031	1,8	26076	1,9	81367	1,9	181	1,9	2109	1,3	4588	1,6
CARAS-SEVERIN	80886	1,3	17184	1,2	57305	1,3	127	1,3	1922	1,2	6397	2,2
CALARASI	53961	0,9	14377	1,0	37321	0,9	79	0,8			2263	0,8
CLUJ	264033	4,4	63340	4,5	196887	4,5	252	2,6			3806	1,3
CONSTANTA	264529	4,4	59551	4,3	188645	4,3	944	9,7	10621	6,4	16333	5,6
COVASNA	57423	0,9	11972	0,9	42803	1,0	41	0,4	1175	0,7	2648	0,9
DAMBOVITA	94893	1,6	26299	1,9	59539	1,4	54	0,6	2951	1,8	9055	3,1
DOLJ	157945	2,6	37246	2,7	112273	2,6	209	2,2	5633	3,4	8426	2,9
GALATI	172717	2,8	33488	2,4	130397	3,0	219	2,3	5370	3,2	8832	3,0
GIURGIU	40369	0,7	11316	0,8	25851	0,6	50	0,5			3202	1,1
GORJ	81173	1,3	16930	1,2	60388	1,4	93	1,0	2667	1,6	3855	1,3
HARGHITA	85834	1,4	20610	1,5	63612	1,5	42	0,4			1612	0,6
HUNEDOARA	114562	1,9	29171	2,1	77187	1,8	137	1,4	2944	1,8	8204	2,8
IALOMITA	59610	1,0	13465	1,0	42548	1,0	74	0,8	1586	1,0	3597	1,2
IASI	206878	3,4	42251	3,0	156763	3,6	189	1,9	4224	2,5	7864	2,7
MARAMURES	122105	2,0	36362	2,6	80305	1,8	134	1,4	2924	1,8	5438	1,9
MEHEDINTI	63975	1,1	16299	1,2	42140	1,0	65	0,7	3085	1,9	5536	1,9
MURES	147327	2,4	35306	2,5	106681	2,4	129	1,3	2942	1,8	5340	1,8
NEAMT	119093	2,0	31584	2,3	82099	1,9	53	0,5	2435	1,5	5410	1,8
OLT	87383	1,4	20529	1,5	59860	1,4	65	0,7	2033	1,2	6994	2,4
PRAHOVA	217440	3,6	46046	3,3	163084	3,7	274	2,8	3934	2,4	8310	2,8
SALAJ	47977	0,8	13156	0,9	32200	0,7	37	0,4	683	0,4	2621	0,9
SATU MARE	97098	1,6	23396	1,7	66946	1,5	32	0,3	2934	1,8	6756	2,3
SIBIU	134069	2,2	26620	1,9	103307	2,4	66	0,7	2583	1,6	4142	1,4
SUCEAVA	150955	2,5	35997	2,6	102646	2,3	28	0,3	2387	1,4	12312	4,2
TELEORMAN	69152	1,1	16120	1,2	51351	1,2	70	0,7	1504	0,9	1681	0,6
TIMIS	236908	3,9	47523	3,4	179885	4,1	296	3,1	7273	4,4	9500	3,2
TULCEA	62296	1,0	14588	1,0	45160	1,0	149	1,5	1002	0,6	2548	0,9
VASLUI	68254	1,1	18425	1,3	45534	1,0	41	0,4	1385	0,8	4295	1,5
VALCEA	99517	1,6	23721	1,7	70804	1,6	101	1,0	1888	1,1	4992	1,7
VRANCEA	77742	1,3	17582	1,3	58162	1,3	45	0,5	1594	1,0	1998	0,7
MUN. BUCURESTI	1237663	20,4	267057	19,1	902105	20,6	2754	28,4	51406	31,0	68501	23,4
ILFOV	73599	1,2	20547	1,5	49798	1,1	40	0,4	1879	1,1	3254	1,1

*) according to the effect of Law No. 314/2001, art.1 și art. 6

*** Less than 0,01%

Table no. 2

**Operations registered in the Trade Register, by categories
during the period of December 1990 - October 2005, in total by country and counties,
- rate of categories of operations in total operations/country -**

Counties	Total of registered operations		out of which :									
			Registered companies		Changes in statutory documents		out of which :				Strike off companies	
	of liquidation, dissolution						out of which :					
	No.	%	No.	%	No.	%	No.	%	No.	%	No.	%
0	1	2	3	4	5	6	7	8	9	10	11	12
Total ROMÂNIA	6067908	100,0	1399979	23,1	4375071	72,1	9694	0,2	165855	2,7	292858	4,8
ALBA	83492	100,0	21626	25,9	60019	71,9	347	0,4	3596	4,3	1847	2,2
ARAD	134277	100,0	33667	25,1	94145	70,1	433	0,3	2974	2,2	6465	4,8
ARGES	147884	100,0	36139	24,4	106002	71,7	215	0,1	4219	2,9	5743	3,9
BACAU	144756	100,0	35863	24,8	102489	70,8	1003	0,7	5280	3,6	6404	4,4
BIHOR	186514	100,0	40828	21,9	138497	74,3	310	0,2	4598	2,5	7189	3,9
BISTRITA-NASAUD	77143	100,0	17249	22,4	55904	72,5	65	0,1	1120	1,5	3990	5,2
BOTOSANI	56199	100,0	17408	31,0	36307	64,6	63	0,1	1563	2,8	2484	4,4
BRASOV	198966	100,0	43268	21,7	148650	74,7	149	0,1	4892	2,5	7048	3,5
BRAILA	79280	100,0	19797	25,0	58105	73,3	39	0,0	2540	3,2	1378	1,7
BUZAU	112031	100,0	26076	23,3	81367	72,6	181	0,2	2109	1,9	4588	4,1
CARAS-SEVERIN	80886	100,0	17184	21,2	57305	70,8	127	0,2	1922	2,4	6397	7,9
CALARASI	53961	100,0	14377	26,6	37321	69,2	79	0,1			2263	4,2
CLUJ	264033	100,0	63340	24,0	196887	74,6	252	0,1			3806	1,4
CONSTANTA	264529	100,0	59551	22,5	188645	71,3	944	0,4	10621	4,0	16333	6,2
COVASNA	57423	100,0	11972	20,8	42803	74,5	41	0,1	1175	2,0	2648	4,6
DAMBOVITA	94893	100,0	26299	27,7	59539	62,7	54	0,1	2951	3,1	9055	9,5
DOLJ	157945	100,0	37246	23,6	112273	71,1	209	0,1	5633	3,6	8426	5,3
GALATI	172717	100,0	33488	19,4	130397	75,5	219	0,1	5370	3,1	8832	5,1
GIURGIU	40369	100,0	11316	28,0	25851	64,0	50	0,1			3202	7,9
GORJ	81173	100,0	16930	20,9	60388	74,4	93	0,1	2667	3,3	3855	4,7
HARGHITA	85834	100,0	20610	24,0	63612	74,1	42	0,0			1612	1,9
HUNEDOARA	114562	100,0	29171	25,5	77187	67,4	137	0,1	2944	2,6	8204	7,2
IALOMITA	59610	100,0	13465	22,6	42548	71,4	74	0,1	1586	2,7	3597	6,0
IASI	206878	100,0	42251	20,4	156763	75,8	189	0,1	4224	2,0	7864	3,8
MARAMURES	122105	100,0	36362	29,8	80305	65,8	134	0,1	2924	2,4	5438	4,5
MEHEDINTI	63975	100,0	16299	25,5	42140	65,9	65	0,1	3085	4,8	5536	8,7
MURES	147327	100,0	35306	24,0	106681	72,4	129	0,1	2942	2,0	5340	3,6
NEAMT	119093	100,0	31584	26,5	82099	68,9	53	0,0	2435	2,0	5410	4,5
OLT	87383	100,0	20529	23,5	59860	68,5	65	0,1	2033	2,3	6994	8,0
PRAHOVA	217440	100,0	46046	21,2	163084	75,0	274	0,1	3934	1,8	8310	3,8
SALAJ	47977	100,0	13156	27,4	32200	67,1	37	0,1	683	1,4	2621	5,5
SATU MARE	97098	100,0	23396	24,1	66946	68,9	32	0,0	2934	3,0	6756	7,0
SIBIU	134069	100,0	26620	19,9	103307	77,1	66	0,0	2583	1,9	4142	3,1
SUCEAVA	150955	100,0	35997	23,8	102646	68,0	28	0,0	2387	1,6	12312	8,2
TELEORMAN	69152	100,0	16120	23,3	51351	74,3	70	0,1	1504	2,2	1681	2,4
TIMIS	236908	100,0	47523	20,1	179885	75,9	296	0,1	7273	3,1	9500	4,0
TULCEA	62296	100,0	14588	23,4	45160	72,5	149	0,2	1002	1,6	2548	4,1
VASLUI	68254	100,0	18425	27,0	45534	66,7	41	0,1	1385	2,0	4295	6,3
VALCEA	99517	100,0	23721	23,8	70804	71,1	101	0,1	1888	1,9	4992	5,0
VRANCEA	77742	100,0	17582	22,6	58162	74,8	45	0,1	1594	2,1	1998	2,6
MUN. BUCURESTI	1237663	100,0	267057	21,6	902105	72,9	2754	0,2	51406	4,2	68501	5,5
ILFOV	73599	100,0	20547	27,9	49798	67,7	40	0,1	1879	2,6	3254	4,4

*) according to the effect of Law No. 314/2001, art.1 și art. 6

*** Less than 0,01%

Table no.3

Number and structure of incorporations in the Trade Register, by years, during the period of December 1990 - October 2005

Period (year, month)	Registered companies		Percentage	
	No.	%	%	
0	1	2	3	
Total, 31 October 2005, out of which	1399979	100,00		
Year 1990	81	0,01		
Year 1991	95840	6,85		
Year 1992	137456	9,82		
Year 1993	117078	8,36		
Year 1994	137445	9,82		
Year 1995	65479	4,68		
Year 1996	62089	4,43		
Year 1997	55663	3,98		
Year 1998	63878	4,56		
Year 1999	57197	4,09		
Year 2000	57291	4,09		
Year 2001	61265	4,38		
Year 2002	84780	6,06		
Year 2003	123582	8,83		
Year 2004	144284	10,31		
Year 2003 (1.I - 31.VII), out of which :	136571	9,76		100,0
January	10148			7,4
February	16238			11,9
March	20378			14,9
April	16782			12,3
May	14305			10,5
June	14380			10,5
July	11522			8,44
August	11453			8,39
September	10961			8,03
October	10404			7,62

Note: Column 2 reveals the annual structure of incorporations; column 3 reveals the structure by months during the current year.

*** Less than 0,01%
Diagram no.1

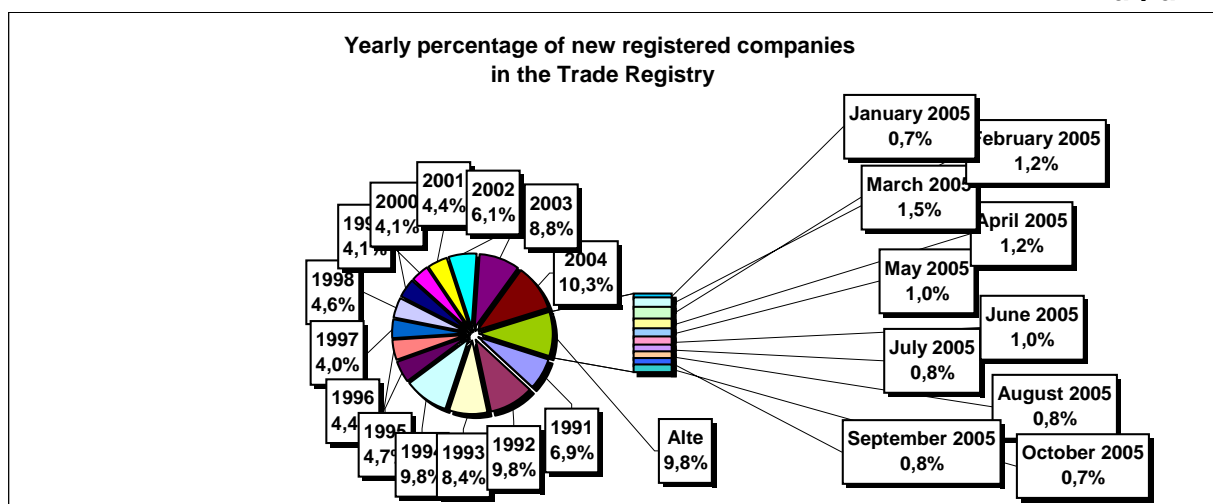


Table no. 4

The number of incorporations in the Trade Register, by counties and sources of capital, in the period December 1990 - October 2005

Counties	Total		out of which:						Ranking by: *
			Private capital			State majority capital		Mixed capital (state+private)	
			out of which:			out of which:			
			PF+AF	Companies	OC	RA	Companies	Companies	
No.	%	No.	No.	No.	No.	No.	No.		
0	1	2	3	4	5	6	7	8	9
Total ROMÂNIA	1399979	100,0	350942	1031420	5386	1321	2355	8555	X
ALBA	21626	1,5	7302	13931	141	35	47	170	24
ARAD	33668	2,4	12972	20140	157	26	40	333	15
ARGES	36139	2,6	11732	24029	168	29	29	152	11
BACAU	35863	2,6	11872	23534	158	34	42	223	13
BIHOR	40828	2,9	8012	32266	145	36	62	307	8
BISTRITA-NASAUD	17249	1,2	6116	10878	98	19	29	109	32
BOTOSANI	17408	1,2	7710	9264	122	21	172	119	31
BRASOV	43268	3,1	8488	34370	114	40	87	169	6
BRAILA	19797	1,4	4817	14648	96	28	43	165	28
BUZAU	26076	1,9	7402	18334	142	25	42	131	21
CARAS-SEVERIN	17184	1,2	5947	10900	102	33	65	137	33
CALARASI	14377	1,0	4124	9977	86	18	77	95	38
CLUJ	63340	4,5	15369	47468	150	52	40	261	2
CONSTANTA	59551	4,3	11203	47506	203	50	49	540	3
COVASNA	11972	0,9	3854	7886	67	24	32	109	41
DAMBOVITA	26299	1,9	12183	13726	134	29	75	152	20
DOLJ	37246	2,7	6932	29854	162	40	57	201	9
GALATI	33488	2,4	6181	26948	135	30	51	143	16
GIURGIU	11316	0,8	2586	8410	80	21	109	110	42
GORJ	16930	1,2	3674	12839	184	50	83	100	34
HARGHITA	20610	1,5	7631	12599	85	23	43	229	25
HUNEDOARA	29171	2,1	7640	21039	81	37	92	282	18
IALOMITA	13465	1,0	5186	8053	74	15	46	91	39
IASI	42251	3,0	11347	30293	164	33	70	344	7
MARAMURES	36362	2,6	14999	21043	121	37	39	123	10
MEHEDINTI	16299	1,2	4967	11107	82	19	26	98	35
MURES	35306	2,5	13018	21903	154	30	34	167	14
NEAMT	31584	2,3	11574	19625	161	29	30	165	17
OLT	20529	1,5	8191	11964	161	26	64	123	27
PRAHOVA	46046	3,3	13709	31771	177	50	68	271	5
SALAJ	13156	0,9	5072	7868	107	19	28	62	40
SATU MARE	23396	1,7	7286	15828	88	19	41	134	23
SIBIU	26620	1,9	6209	19997	117	31	108	158	19
SUCEAVA	35997	2,6	17208	18273	202	30	64	220	12
TELEORMAN	16120	1,2	5453	10273	152	21	41	180	36
TIMIS	47523	3,4	6999	39934	140	37	68	345	4
TULCEA	14588	1,0	4638	9612	66	18	42	212	37
VASLUI	18425	1,3	9075	9049	109	16	41	135	29
VALCEA	23721	1,7	9323	14040	168	40	37	113	22
VRANCEA	17582	1,3	5263	12060	103	16	27	113	30
MUN. BUCURESTI	267056	19,1	15158	250438	138	115	103	1104	1
ILFOV	20547	1,5	2520	17743	92	20	12	160	26

*) The total number of incorporations (col 1)

*** Less than 0,01%

Table no. 5

**The number of incorporations in the Trade Register,
by counties and categories, during the period of
December 1990 - October 2005**

County	Total		out of which:						RA	OC
			PF+AF	companies: 1042330						
	SNC	SCS		SRL	SA	No.	No.			
	No.	%	No.	No.	No.			No.	No.	No.
0	1	2	3	4	5	6	7	8	9	
Total ROMÂNIA	1399979	100,0	350942	32636	1554	977232	30902	1321	5386	
ALBA	21626	1,5	7302	888	11	12712	537	35	141	
ARAD	33667	2,4	12972	51	9	19807	644	26	157	
ARGES	36139	2,6	11732	107	14	23302	787	29	168	
BACAU	35863	2,6	11872	1299	4	21799	696	34	158	
BIHOR	40828	2,9	8012	125	47	31591	872	36	145	
BISTRITA-NASAUD	17249	1,2	6116	146	21	10448	401	19	98	
BOTOSANI	17408	1,2	7710	468	1	8649	437	21	122	
BRASOV	43268	3,1	8488	239	19	33559	809	40	114	
BRAILA	19797	1,4	4817	376	12	13970	498	28	96	
BUZAU	26076	1,9	7402	3747	46	14170	544	25	142	
CARAS-SEVERIN	17184	1,2	5947	117	8	10523	454	33	102	
CALARASI	14377	1,0	4124	609	3	9195	342	18	86	
CLUJ	63340	4,5	15369	2110	18	44455	1186	52	150	
CONSTANTA	59551	4,3	11203	311	23	46334	1427	50	203	
COVASNA	11972	0,9	3854	148	4	7587	288	24	67	
DAMBOVITA	26299	1,9	12183	60	8	13410	475	29	134	
DOLJ	37246	2,7	6932	1560	8	27702	842	40	162	
GALATI	33488	2,4	6181	1574	6	24759	803	30	135	
GIURGIU	11316	0,8	2586	35	8	8274	312	21	80	
GORJ	16930	1,2	3674	28	1	12525	468	50	184	
HARGHITA	20610	1,5	7631	62	6	12329	474	23	85	
HUNEDOARA	29171	2,1	7640	1166	98	19501	648	37	81	
IALOMITA	13465	1,0	5186	266	11	7583	330	15	74	
IASI	42251	3,0	11347	506	111	29118	970	33	164	
MARAMURES	36362	2,6	14999	1926	23	18683	572	37	121	
MEHEDINTI	16299	1,2	4967	427	3	10486	315	19	82	
MURES	35306	2,5	13018	37	34	21402	631	30	154	
NEAMT	31584	2,3	11574	3293	30	15852	645	29	161	
OLT	20529	1,5	8191	1611	1	10063	476	26	161	
PRAHOVA	46046	3,3	13709	3121	12	28125	852	50	177	
SALAJ	13156	0,9	5072	600	4	7078	276	19	107	
SATU MARE	23396	1,7	7286	283	5	15264	451	19	88	
SIBIU	26620	1,9	6209	775	48	18818	622	31	117	
SUCEAVA	35997	2,6	17208	438	8	17547	564	30	202	
TELEORMAN	16120	1,2	5453	272	399	9424	399	21	152	
TIMIS	47523	3,4	6999	605	26	38516	1200	37	140	
TULCEA	14588	1,0	4638	1363	112	7929	462	18	66	
VASLUI	18425	1,3	9075	90	11	8731	393	16	109	
VALCEA	23721	1,7	9323	363	6	13358	463	40	168	
VRANCEA	17582	1,3	5263	356	10	11400	434	16	103	
MUN. BUCURESTI	267057	19,1	15158	1029	295	243973	6348	115	138	
ILFOV	20547	1,5	2520	49	30	17281	555	20	92	

Table no. 6

**The number of incorporations in the Trade Register, by field of activity*
during the period of December 1990 - October 2005**

CAEN segment	Field of activity	Total		out of which:						
				PF+AF	companies: 1042330				RA	OC
					SNC	SCS	SRL	SA		
					No.	No.	No.	No.		
0	1	2	3	4	5	6	7	8	9	10
	Total ROMANIA	1399979	100,0	350942	32636	1554	977232	30902	1321	5386
1	Agriculture, hunting and related service activities	54070	3,9	10309	2023	44	37758	3768	51	117
2	Forestry, logging and related service activities	7446	0,5	922	152	3	6063	219	79	8
5	Fishing, fish farming and related service activities	2291	0,2	1214	17	3	1004	53		
10	Mining of coal and lignite; extraction of peat	102	0,0	2			65	31	4	
11	Extraction of crude petroleum and natural gas; service activities incidental to oil and gas extraction, excluding surveying	309	0,0	3	1		138	121	46	
12	Mining of uranium and thorium ores	133	0,0	32			95	6		
13	Mining of metal ores	521	0,0	163			295	55	8	
14	Other mining and quarrying	1371	0,1	105	9	1	1086	167	2	1
15	Manufacture of food products and beverages	71028	5,1	13288	3260	149	52247	1831	5	248
16	Manufacture of tobacco products	285	0,0	47			206	31	1	
17	Manufacture of textiles	11231	0,8	2213	556	16	7896	405		145
18	Manufacture of wearing apparel; dressing and dyeing of fur	19781	1,4	4408	875	38	13799	355	1	305
19	Tanning and dressing of leather; manufacture of luggage, handbags, saddlery, harness and footwear	4982	0,4	853	112	6	3837	122	1	51
20	Manufacture of wood and of products of wood and cork, except furniture; manufacture of articles of straw and plaiting materials	23181	1,7	8005	575	29	14026	495	9	42
21	Manufacture of pulp, paper and paper products	1649	0,1	106	21	1	1411	97		13
22	Publishing, printing and reproduction of recorded media	10938	0,8	880	317	21	9299	397	14	10
23	Manufacture of coke, refined petroleum products and nuclear fuel	249	0,0	24			189	34	2	
24	Manufacture of chemicals and chemical products	3524	0,3	114	89	1	2936	372	6	6
25	Manufacture of rubber and plastic products	5648	0,4	532	313	7	4515	256		24
26	Manufacture of other non-metallic mineral products	8214	0,6	2460	212	6	5139	379	5	13
27	Manufacture of basic metals	2354	0,2	164	39	3	1932	206	3	7
28	Manufacture of fabricated metal products, except machinery and equipment	15012	1,1	3344	361	23	10494	717	11	62
29	Manufacture of machinery and equipment n.e.c.	3564	0,3	96	44	7	2975	418	19	5
30	Manufacture of office machinery and computers	1723	0,1	15	25	4	1599	80		
31	Manufacture of electrical machinery and apparatus n.e.c.	1807	0,1	104	44	6	1504	143		6
32	Manufacture of radio, television and communication equipment and apparatus	818	0,1	52	14	4	674	73		1
33	Manufacture of medical, precision and optical instruments, watches and clocks	2270	0,2	545	17	2	1604	98		4
34	Manufacture of motor vehicles, trailers and semi-trailers	850	0,1	29	31	3	663	122		2
35	Manufacture of other transport equipment	1729	0,1	261	86	7	1179	121	73	2
36	Manufacture of furniture; manufacturing n.e.c.	14039	1,0	3937	284	16	9312	327	5	158
37	Recycling	4404	0,3	392	51	5	3785	170		1
40	Electricity, gas, steam and hot water supply	2791	0,2	833	3	1	1369	497	88	
41	Collection, purification and distribution of water	3513	0,3	1615	2		1637	186	73	
45	Construction	73626	5,3	19612	611	42	50848	2383	53	77

*)Field of activity declared when registered, according to CAEN classification

Table no. 6
(continuing)

**The number of incorporations in the Trade Register, by field of activity*
and categories, during the period of December 1990 - October 2005**

CAEN segment	Field of activity	Total		out of which:						RA	OC
				PF+AF	companies: 1042330						
					SNC	SCS	SRL	SA			
					No.	No.	No.	No.			
0	1	2	3	4	5	6	7	8	9	10	
	Total ROMÂNIA	1399979	100,0	350942	32636	1554	977232	30902	1321	5386	
50	Sale, maintenance and repair of motor vehicles and motorcycles; retail sale of automotive fuel	49722	3,6	7553	1244		39822	1022	5	42	
51	Wholesale trade and commission trade, except of motor vehicles and motorcycles	186790	13,3	14687	4523	148	163858	3258	35	281	
52	Retail trade, except of motor vehicles and motorcycles; repair of personal and household goods	467553	33,4	163693	11914	556	286527	2479	5	2378	
55	Hotels and restaurants	53428	3,8	12883	1635	126	37847	769	73	95	
60	Land transport; transport via pipelines	71583	5,1	32317	844	36	37298	1045	33	10	
61	Water transport	807	0,1	147	82	8	435	64	70	1	
62	Air transport	280	0,0	17			209	44	10		
63	Supporting and auxiliary transport activities; activities of travel agencies	9109	0,7	544	220	14	7795	429	96	11	
64	Post and telecommunications	5789	0,4	381	11	1	5092	290	11	3	
65	Financial intermediation, except insurance and pension funding	5571	0,4	142	15		2369	2011	2	1032	
66	Insurance and pension funding, except compulsory social security	1944	0,1	605	1		499	838		1	
67	Activities auxiliary to financial intermediation	5853	0,4	1233	6	2	4332	272		8	
70	Real estate activities	16148	1,2	643	28	8	14908	538	17	6	
71	Renting of machinery and equipment without operator and of personal and household goods	2850	0,2	580	116	8	1983	92	70	1	
72	Computer and related activities	18561	1,3	2768	119	13	15275	381	2	3	
73	Research and development	1578	0,1	233	11	2	1119	168	43	2	
74	Other business activities	88915	6,4	17915	783	71	68390	1589	106	60	
75	Public administration and defence; compulsory social security	353	0,0	87	5		214	25	21	1	
80	Education	5788	0,4	3036	62	5	2620	65			
85	Health and social work	14547	1,0	2062	233	15	12154	79	3	1	
90	Sewage and refuse disposal, sanitation and similar activities	740	0,1	73	13	2	531	101	18		
91	Activities of membership organizations n.e.c.	206	0,0	90	1		97	15		3	
92	Recreational, cultural and sporting activities	13426	1,0	3074	202	14	9775	283	66	12	
93	Other service activities	22323	1,6	9154	418	42	12201	305	76	126	
95	Activities of households as employers of domestic staff	606	0,0	313	6	1	282	3		1	
96	Extra-territorial organizations and bodies	1	0,0	1							

*)Field of activity declared when registered, according to CAEN classification

Table no. 7

**Operations carried on with the Trade Registers,
by counties and categories,
in October 2005**

County	Total of operations carried on		out of which:							
			New incorporations		Changes in statutory documents		out of which: of liquidation, dissolution		Strike off companies	
	No.	%	No.	%	No.	%	No.	%	No.	%
0	1	2	3	4	5	6	7	8	9	10
Total ROMÂNIA	60553	100,0	10404	17,2	47739	78,8	279	0,5	2410	4,0
ALBA	1126	100,0	184	16,3	905	80,4	2	0,2	37	3,3
ARAD	2270	100,0	259	11,4	1978	87,1	2	0,1	33	1,5
ARGES	1746	100,0	242	13,9	1485	85,1	4	0,2	19	1,1
BACAU	1056	100,0	257	24,3	744	70,5	2	0,2	55	5,2
BIHOR	1742	100,0	350	20,1	1335	76,6	10	0,6	57	3,3
BISTRITA-NASAUD	443	100,0	109	24,6	311	70,2			23	5,2
BOTOSANI	378	100,0	146	38,6	213	56,3			19	5,0
BRASOV	2771	100,0	359	13,0	2172	78,4	9	0,3	240	8,7
BRAILA	581	100,0	116	20,0	438	75,4			27	4,6
BUZAU	823	100,0	174	21,1	616	74,8	9	1,1	33	4,0
CARAS-SEVERIN	859	100,0	145	16,9	703	81,8	13	1,5	11	1,3
CALARASI	375	100,0	106	28,3	254	67,7	4	1,1	15	4,0
CLUJ	4843	100,0	512	10,6	4270	88,2	5	0,1	61	1,3
CONSTANTA	2569	100,0	406	15,8	2068	80,5	16	0,6	95	3,7
COVASNA	486	100,0	91	18,7	356	73,3	12	2,5	39	8,0
DAMBOVITA	1557	100,0	152	9,8	912	58,6			493	31,7
DOLJ	1210	100,0	312	25,8	858	70,9	3	0,2	40	3,3
GALATI	1588	100,0	231	14,5	1321	83,2	65	4,1	36	2,3
GIURGIU	366	100,0	77	21,0	282	77,0	1	0,3	7	1,9
GORJ	1376	100,0	118	8,6	1238	90,0	1	0,1	20	1,5
HARGHITA	669	100,0	169	25,3	467	69,8	1	0,1	33	4,9
HUNEDOARA	911	100,0	205	22,5	645	70,8	4	0,4	61	6,7
IALOMITA	501	100,0	92	18,4	360	71,9	1	0,2	49	9,8
IASI	1638	100,0	358	21,9	1238	75,6	4	0,2	42	2,6
MARAMURES	1095	100,0	285	26,0	689	62,9	4	0,4	121	11,1
MEHEDINTI	341	100,0	96	28,2	237	69,5	3	0,9	8	2,3
MURES	2548	100,0	282	11,1	2182	85,6	11	0,4	84	3,3
NEAMT	984	100,0	191	19,4	739	75,1			54	5,5
OLT	686	100,0	138	20,1	538	78,4	2	0,3	10	1,5
PRAHOVA	2093	100,0	360	17,2	1643	78,5	1	0,0	90	4,3
SALAJ	579	100,0	116	20,0	432	74,6	1	0,2	31	5,4
SATU MARE	698	100,0	182	26,1	501	71,8	3	0,4	15	2,1
SIBIU	2148	100,0	271	12,6	1842	85,8	6	0,3	35	1,6
SUCEAVA	917	100,0	221	24,1	654	71,3	3	0,3	42	4,6
TELEORMAN	427	100,0	99	23,2	317	74,2	1	0,2	11	2,6
TIMIS	2965	100,0	495	16,7	2445	82,5	7	0,2	25	0,8
TULCEA	413	100,0	114	27,6	288	69,7	2	0,5	11	2,7
VASLUI	610	100,0	124	20,3	423	69,3			63	10,3
VALCEA	941	100,0	147	15,6	689	73,2	3	0,3	105	11,2
VRANCEA	960	100,0	105	10,9	846	88,1	1	0,1	9	0,9
MUN. BUCURESTI	9297	100,0	1832	19,7	7342	79,0	62	0,7	123	1,3
ILFOV	967	100,0	176	18,2	763	78,9	1	0,1	28	2,9

*) by effect of implementation of Law no. 314/2001, art.1 and art. 6

*** Less than 0,01%

Table no. 8

**The number of incorporations in the Trade Register,
by counties and sources of capital,
in October 2005**

County	Total		out of which:					Rnking by: *	
			Private capital			State majority capital			Mixed capital (state+private)
			out of which:			out of which:			Companies
			PF+AF	Companies	OC	RA	Companies		Companies
No.	%	No.	No.	No.	No.	No.	No.		
0	1	2	3	4	5	6	7	8	9
Total ROMÂNIA	10404	100,0	3620	6774	2	1	5	2	X
ALBA	184	1,8	88	96					20
ARAD	259	2,5	102	157					13
ARGES	242	2,3	97	145					15
BACAU	257	2,5	96	161					14
BIHOR	350	3,4	175	174		1			8
BISTRITA-NASAUD	109	1,0	41	68					35
BOTOSANI	146	1,4	91	55					27
BRASOV	359	3,5	116	242				1	6
BRAILA	116	1,1	43	73					32
BUZAU	174	1,7	79	95					23
CARAS-SEVERIN	145	1,4	49	96					28
CALARASI	106	1,0	51	55					36
CLUJ	512	4,9	210	302					2
CONSTANTA	406	3,9	91	314			1		4
COVASNA	91	0,9	49	42					41
DAMBOVITA	152	1,5	55	97					25
DOLJ	312	3,0	121	190			1		9
GALATI	231	2,2	85	146					16
GIURGIU	77	0,7	32	45					42
GORJ	118	1,1	55	63					31
HARGHITA	169	1,6	82	87					24
HUNEDOARA	205	2,0	54	151					18
IALOMITA	92	0,9	49	43					40
IASI	358	3,4	124	234					7
MARAMURES	285	2,7	111	174					10
MEHEDINTI	96	0,9	48	48					39
MURES	282	2,7	120	162					11
NEAMT	191	1,8	119	72					19
OLT	138	1,3	52	86					29
PRAHOVA	360	3,5	159	199			2		5
SALAJ	116	1,1	65	49			1	1	33
SATU MARE	182	1,7	81	101					21
SIBIU	271	2,6	99	171	1				12
SUCEAVA	221	2,1	99	121	1				17
TELEORMAN	99	1,0	39	60					38
TIMIS	495	4,8	146	349					3
TULCEA	114	1,1	61	53					34
VASLUI	124	1,2	74	50					30
VALCEA	147	1,4	73	74					26
VRANCEA	105	1,0	42	63					37
MUN. BUCURESTI	1832	17,6	168	1664					1
ILFOV	176	1,7	29	147					22

*) The total number of incorporations (col 1)

*** Less than 0,01%

Table no.9

**The number of incorporations in the Trade Register,
by counties and category
in October 2005**

County	Total		out of which:						
			PF+AF	companies: 6781				RA	OC
	SNC	SCS		SRL	SA				
	No.	%	No.	No.	No.	No.	No.	No.	
0	1	2	3	4	5	6	7	8	9
Total ROMÂNIA	10404	100,0	3620	1	1	6713	66	1	2
ALBA	184	1,8	88			95	1		
ARAD	259	2,5	102		1	154	2		
ARGES	242	2,3	97			144	1		
BACAU	257	2,5	96			159	2		
BIHOR	350	3,4	175			172	2	1	
BISTRITA-NASAUD	109	1,0	41			67	1		
BOTOSANI	146	1,4	91			53	2		
BRASOV	359	3,5	116			241	2		
BRAILA	116	1,1	43			73			
BUZAU	174	1,7	79			95			
CARAS-SEVERIN	145	1,4	49			92	4		
CALARASI	106	1,0	51			55			
CLUJ	512	4,9	210			299	3		
CONSTANTA	406	3,9	91			315			
COVASNA	91	0,9	49			42			
DAMBOVITA	152	1,5	55			96	1		
DOLJ	312	3,0	121			191			
GALATI	231	2,2	85			146			
GIURGIU	77	0,7	32			45			
GORJ	118	1,1	55			62	1		
HARGHITA	169	1,6	82			84	3		
HUNEDOARA	205	2,0	54			150	1		
IALOMITA	92	0,9	49			41	2		
IASI	358	3,4	124			233	1		
MARAMURES	285	2,7	111			174			
MEHEDINTI	96	0,9	48			48			
MURES	282	2,7	120			161	1		
NEAMT	191	1,8	119			72			
OLT	138	1,3	52			84	2		
PRAHOVA	360	3,5	159			198	3		
SALAJ	116	1,1	65			49	2		
SATU MARE	182	1,7	81			100	1		
SIBIU	271	2,6	99			170	1		1
SUCEAVA	221	2,1	99			120	1		1
TELEORMAN	99	1,0	39			60			
TIMIS	495	4,8	146	1		347	1		
TULCEA	114	1,1	61			53			
VASLUI	124	1,2	74			50			
VALCEA	147	1,4	73			72	2		
VRANCEA	105	1,0	42			63			
MUN. BUCURESTI	1832	17,6	168			1642	22		
ILFOV	176	1,7	29			146	1		

Table no. 10

**The number of incorporations in the Trade Register, by field of activity*
and categories in October 2005**

CAEN segment	Field of activity	Total		out of which:						
				PF+AF	companies: 6781				RA	OC
		SNC	SCS		SRL	SA				
		No.	%	No.	No.	No.	No.	No.	No.	No.
0	1	2	3	4	5	6	7	8	9	10
	Total ROMÂNIA	10404	100,0	3620	1	1	6713	66	1	2
1	Agriculture, hunting and related service activities	401	3,9	197			203	1		
2	Forestry, logging and related service activities	50	0,5	7			41	1	1	
5	Fishing, fish farming and related service activities	35	0,3	30			5			
10	Mining of coal and lignite; extraction of peat	4	0,0				1	3		
11	Extraction of crude petroleum and natural gas; service activities incidental to oil and gas extraction, excluding surveying	2	0,0				2			
12	Mining of uranium and thorium ores									
13	Mining of metal ores									
14	Other mining and quarrying	14	0,1	1			13			
15	Manufacture of food products and beverages	232	2,2	129			101	2		
16	Manufacture of tobacco products	1	0,0				1			
17	Manufacture of textiles	41	0,4	14			26			1
18	Manufacture of wearing apparel; dressing and dyeing of fur	92	0,9	40			52			
19	Tanning and dressing of leather; manufacture of luggage, handbags, saddlery, harness and footwear	25	0,2	5			20			
20	Manufacture of wood and of products of wood and cork, except furniture; manufacture of articles of straw and plaiting materials	146	1,4	93			52	1		
21	Manufacture of pulp, paper and paper products	7	0,1				7			
22	Publishing, printing and reproduction of recorded media	69	0,7	2			67			
23	Manufacture of coke, refined petroleum products and nuclear fuel									
24	Manufacture of chemicals and chemical products	7	0,1				7			
25	Manufacture of rubber and plastic products	38	0,4	5			33			
26	Manufacture of other non-metallic mineral products	43	0,4	17			25	1		
27	Manufacture of basic metals	5	0,0				5			
28	Manufacture of fabricated metal products, except machinery and equipment	128	1,2	46			81	1		
29	Manufacture of machinery and equipment n.e.c.	16	0,2	2			14			
30	Manufacture of office machinery and computers	4	0,0				4			
31	Manufacture of electrical machinery and apparatus n.e.c.	10	0,1	1			9			
32	Manufacture of radio, television and communication equipment and apparatus	8	0,1	2			6			
33	Manufacture of medical, precision and optical instruments, watches and clocks	16	0,2	6			10			
34	Manufacture of motor vehicles, trailers and semi- trailers	4	0,0				4			
35	Manufacture of other transport equipment	11	0,1	2			9			
36	Manufacture of furniture; manufacturing n.e.c.	101	1,0	46			55			
37	Recycling	38	0,4	5			33			
40	Electricity, gas, steam and hot water supply	5	0,0				4	1		
41	Collection, purification and distribution of water	4	0,0	1			3			
45	Construction	937	9,0	323			606	8		

*)Field of activity declared when registered, according to CAEN classification

Table no. 10
(continuance)

**The number of incorporations in the Trade Register, by field of activity*
and categories in October 2005**

CAEN segment	Field of activity	Total		out of which:						
				PF+AF	companies: 6781				RA	OC
		No.	%		No.	SNC	SCS	SRL		
				No.		No.	No.	No.	No.	No.
0	1	2	3	4	5	6	7	8	9	10
	Total ROMÂNIA	10404	100,0	3620	1	1	6713	66	1	2
50	Sale, maintenance and repair of motor vehicles and motorcycles; retail sale of automotive fuel	275	2,6	86			189			
51	Wholesale trade and commission trade, except of motor vehicles and motorcycles	1043	10,0	249			791	3		
52	Retail trade, except of motor vehicles and motorcycles; repair of personal and household goods	2571	24,7	1180			1390			1
55	Hotels and restaurants	470	4,5	110	1		358	1		
60	Land transport; transport via pipelines	649	6,2	311			337	1		
61	Water transport	2	0,0				2			
62	Air transport	2	0,0				2			
63	Supporting and auxiliary transport activities; activities of travel agencies	94	0,9	9			85			
64	Post and telecommunications	81	0,8	10			71			
65	Financial intermediation, except insurance and pension funding	56	0,5				28	28		
66	Insurance and pension funding, except compulsory social security	2	0,0					2		
67	Activities auxiliary to financial intermediation	57	0,5				57			
70	Real estate activities	326	3,1	3			320	3		
71	Renting of machinery and equipment without operator and of personal and household goods	33	0,3	4			29			
72	Computer and related activities	268	2,6	105			163			
73	Research and development	7	0,1				6	1		
74	Other business activities	1306	12,6	302		1	997	6		
75	Public administration and defence; compulsory social security									
80	Education	47	0,5	7			40			
85	Health and social work	124	1,2	1			123			
90	Sewage and refuse disposal, sanitation and similar activities	11	0,1				10	1		
91	Activities of membership organizations n.e.c.									
92	Recreational, cultural and sporting activities	180	1,7	82			97	1		
93	Other service activities	272	2,6	154			118			
95	Activities of households as employers of domestic staff	34	0,3	33			1			
96	Extra-territorial organizations and bodies									

*)Field of activity declared when registered, according to CAEN classification

Table no. 11

**Number of companies registered and the amount
of subscribed capital, by county in October 2005**

County	Total registered companies		Subscribed capital		Average subscribed capital on company
	No.	%	mil. ROL	%	mil. ROL
0	1	2	3	4	5
Total ROMÂNIA	6781	100,0	93117,1	100,0	13,8
ALBA	96	1,4	131,9	0,1	1,4
ARAD	157	2,3	209,4	0,2	1,3
ARGES	145	2,1	359,8	0,4	2,5
BACAU	161	2,4	51,6	0,1	0,3
BIHOR	174	2,6	114,4	0,1	0,7
BISTRITA-NASAUD	68	1,0	904,4	1,0	13,3
BOTOSANI	55	0,8	24,8	0,0	0,5
BRASOV	243	3,6	4953,4	5,3	20,6
BRAILA	73	1,1	76,7	0,1	1,1
BUZAU	95	1,4	308,8	0,3	3,3
CARAS-SEVERIN	96	1,4	400,9	0,4	4,2
CALARASI	55	0,8	19,3	0,0	0,4
CLUJ	302	4,5	718,8	0,8	2,4
CONSTANTA	315	4,6	170,0	0,2	0,5
COVASNA	42	0,6	25,0	0,0	0,6
DAMBOVITA	97	1,4	672,7	0,7	6,9
DOLJ	191	2,8	87,1	0,1	0,5
GALATI	146	2,2	113,7	0,1	0,8
GIURGIU	45	0,7	4029,6	4,3	89,5
GORJ	63	0,9	39,1	0,0	0,6
HARGHITA	87	1,3	33,9	0,0	0,4
HUNEDOARA	151	2,2	2748,1	3,0	18,2
IALOMITA	43	0,6	14,6	0,0	0,4
IASI	234	3,5	234,1	0,3	1,0
MARAMURES	174	2,6	100,7	0,1	0,6
MEHEDINTI	48	0,7	20,4	0,0	0,4
MURES	162	2,4	100,9	0,1	0,6
NEAMT	72	1,1	350,0	0,4	4,9
OLT	86	1,3	24,2	0,0	0,3
PRAHOVA	201	3,0	12698,5	13,6	63,2
SALAJ	51	0,8	11608,3	12,5	227,6
SATU MARE	101	1,5	144,3	0,2	1,4
SIBIU	171	2,5	2066,1	2,2	12,2
SUCEAVA	121	1,8	81,0	0,1	0,7
TELEORMAN	60	0,9	367,7	0,4	6,1
TIMIS	349	5,1	604,4	0,6	1,7
TULCEA	53	0,8	162,8	0,2	3,1
VASLUI	50	0,7	17,8	0,0	0,4
VALCEA	74	1,1	55,1	0,1	0,8
VRANCEA	63	0,9	1091,0	1,2	17,6
MUN. BUCURESTI	1664	24,5	43917,2	47,2	26,6
ILFOV	147	2,2	3264,6	3,5	22,2

*Note: The average does not include filials because according to the
Law no.31/1990 they are not juridical persons*

**** Less than 0,01%*

Table no. 12

**Number of registered companies and the amount
of subscribed capital by category,
in September 2005**

Company type	Total registered companies		Subscribed capital		Average subscribed capital on company
	No.	%	mil. ROL	%	mil. ROL
0	1	2	3	4	5
Total ROMÂNIA	6781	100,0	93117,1	100,0	13,8
SNC	1	0,0	0,2	***	0,2
SCS	1	0,0	0,2	***	0,2
SA	66	1,0	44583,3	47,9	1238,4
SRL	6713	99,0	48533,4	52,1	7,2
SCA		***		***	-

Note: The average does not include filials because according to the Law no.31/1990 they are not juridical persons

*** Less than 0,01%

Diagram no.5

