



MINISTRY OF JUSTICE

THE NATIONAL TRADE REGISTER OFFICE

Bucharest, 2, Octavian Goga Blvd., sector 3; Phone: +40 - 21 - 320.60.13; Fax: +40 - 21 - 320.58.29; Website: [www.onrc.ro](http://www.onrc.ro); E-mail: [onrc@onrc.ro](mailto:onrc@onrc.ro)

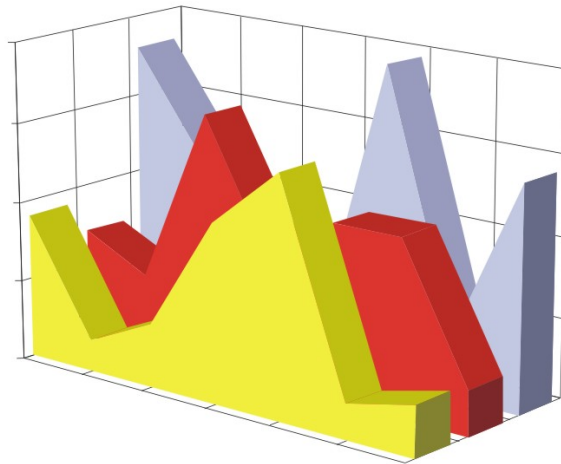
# PROCEEDINGS IN THE CENTRAL TRADE REGISTER

## STATISTICAL SYNTHESIS

OF

**RECORDS IN THE CENTRAL TRADE REGISTER**

**- the 30<sup>th</sup> of September 2005 - provisional data -**



**- ISSUE No. 166 -**

**MINISTRY OF JUSTICE  
THE NATIONAL TRADE REGISTER OFFICE**

---

- Operations of incorporation of companies, changes in statutory documents and strike-off of companies are based on Law No.26/1990 reissued, Law No.31/1990, reissued, OUG No.76/2001, reissued and Methodology Norms No. P/608/1998.
  
- This paper presents the trend in operations registered in The Trade Register Office attached to the law court of Bucharest and in the Trade Register Offices attached to the law court in each county of Romania.
  
- Information recorded in the Central Trade Register concern operations compulsory by law to be registered in the trade registers within the 42 trade register offices attached to the law courts.

*• No part of the content of this publication, in original or in any modified format, may be reproduced, stored in a retrieval system, or transmitted, in any form or by any means, without the prior permission in writing of The Ministry of Justice – The National Trade Register Office.*

*• The content of this publication may be referred to in articles, studies, books, as supporting or explanatory data under the condition only, the source of the information to be clearly and precisely specified.*

# Contents

	Page
<b>1 Explanatory Note</b>	<b>1</b>
<b>2.1 Data for December 1990 – September 2005</b>	<b>3</b>
Table no.1 – Operations registered in the Trade Register, by categories during the period of December 1990 – September 2005, in total by country and counties, rate of categories of operations in total operations country	3
Table no.1.a – Operations registered in the Trade Register, by categories during the period of December 1990 – September 2005, in total by country and counties, counties’ rate in total country	4
Table no. 3 – Number and structure of incorporations in the Trade Register, by years, during the period of December 1990- September 2005	5
Table no.4 – The number of incorporations in the Trade Register, by counties and sources of capital, in the period December 1990 - September 2005	6
Table no. 5 – The number of incorporations in the Trade Register, by counties and categories, during the period of December 1990 – September 2005	7
Table no. 6 – The number of incorporations in the Trade Register, by field of activity and categories, during the period of December 1990 - September 2005	8
<b>2.2 Data for September 2005</b>	<b>10</b>
Table no. 7 – Operations carried on with the Trade Registers, by counties and categories, in September 2005	10
Table no. 8 – The number of incorporations in the Trade Register, by counties and sources of capital, in September 2005	11
Table no. 9 – The number of incorporations in the Trade Register, by counties and category in September 2005	12
Table no. 10 –The number of incorporations in the Trade Register, by field of activity and categories in September 2005	13
Table no. 11 – Number of companies registered and the amount of subscribed capital, by county in September 2005	15
Table no. 12– Number of registered companies and the amount of subscribed capital by category, in September 2005	16
Diagram no. 5 – Average subscribed capital on company in September 2005	16

## Explanatory Note

The Trade Register Office is set-up by Law No. 26/1990, reissued and modified by OUG No. 129/2002, became an active institution since December 1990 and is structured in two levels:

- the national level, represented by the National Trade Register Office organised under the Ministry of Justice
- the local level, represented by the 42 trade register offices attached to the law courts and co-ordinated by the National Trade Register Office

The categories of businessmen compulsory to register in the trade register are:

- natural persons tradesmen and family associations doing usually commercial acts, commercial companies, national companies, companies under state supervision, and co-operative organisations
- subsidiaries registered as commercial companies and legal persons following the legal proceedings of set-up, activity and incorporation according to the type of the legally set-up company.

### Usual Terms:

- incorporation – represents the registration of the company in the trade registry awarding the quality of legal person.

- other statutory documents – represent the official registration of the changes occurred in a company's life, such as: changes in headquarters' address, increase or decrease of the issued capital, merger, liquidation, strike-off, etc.

- strike-off – represents the removal of a company from the trade registry, due to dissolution and liquidation, being also the very moment the company loses its quality of legal person. Data also include the companies under the provisions of Law No. 314/2001.

- change of certificate – represents the obligation of companies set-up before OGU No. 76/2001 republished came in force, to request the incorporation certificate and fiscal registration certificate to be replaced with the new registration certificate containing the given unique registration code.

The ratio of these changes is being calculated as a proportion between the effective number of changes and the number of active companies due to operate the change.

- active company from the legal point of view – a company registered in the trade register and which is not affected by any of the situations leading to the temporary or permanent loss of this status (e.g. dissolution, liquidation, strike-off)

- operations represent all the records in the trade registry including incorporations, other statutory documents and strike-off of companies, irrespective of the object of activity, company's type and origin of the subscribed capital (local or foreign investment).

• **Terms used in tables and charts**

➤ **Number of companies:** represents, depending on the specific table, the number of companies incorporated in the related period, the number of companies being struck-off from the trade registry.

➤ **Amount of the subscribed capital:**

- **total, in local currency:** the amount of the subscribed capital resulted from totalising the amount subscribed (in cash and in kind) in local currency (ROL)

➤ **Regional development:**

*North-East:* Suceava, Botoșani, Neamț, Iași, Bacău, Vaslui.

*South-East:* Vrancea, Galați, Buzău, Brăila, Tulcea, Constanța.

*South-Muntenia:* Argeș, Dâmbovița, Prahova, Teleorman, Giurgiu, Călărași, Ialomița.

*South-West Oltenia:* Gorj, Vâlcea, Dolj, Mehedinți, Olt.

*West:* Arad, Caraș-Severin, Hunedoara, Timiș.

*North-West:* Bihor, Bistrița, Cluj, Satu Mare, Sălaj, Maramureș.

*Center:* Alba, Brașov, Covasna, Harghita, Mureș, Sibiu.

*Bucharest-Ilfov:* București, Ilfov.

CAEN code – The Classification of Activities in the National Economy was approved by HG No. 656/1997, modified by Order No 601 of the President of National Institute of Statistics being compatible with the international classification used in statistic reports and official documents. Activities are ranked upon homogeneity principle by sections, divisions, groups and classes.

Common abbreviations

- **PF** - Natural Persons Tradesman
- **AF** - Family association
- **SNC** - General Partnership
- **SCS** - Limited Partnership
- **SA** - Joint stock company
- **SRL** - Limited liability company
- **RA** - Company Under State Supervision
- **OC** - Co-operative organisation

Source:

The integrated IT system of the trade registry is designed by The National Trade Registry Office according to the provisions of the related legislation in force. The source of information is the computerised system of the trade registers handled by the Trade Register Offices attached to the law courts.

Table no. 1

**Operations registered in the Trade Register, by categories  
during the period of December 1990 - September 2005 in total by country and counties,  
- rate of categories of operations in total operations/country -**

Counties	Total of registered operations		out of which :									
			Registered companies		Changes in statutory documents		out of which :				Strike off companies	
	of liquidation, dissolution						out of which :					
	No.	%	No.	%	No.	%	No.	%	No.	%	No.	%
0	1	2	3	4	5	6	7	8	9	10	11	12
<b>Total ROMÂNIA</b>	<b>6007355</b>	<b>100,0</b>	<b>1389575</b>	<b>100,0</b>	<b>4327332</b>	<b>100,0</b>	<b>10006</b>	<b>100,0</b>	<b>165855</b>	<b>100,0</b>	<b>290448</b>	<b>100,0</b>
ALBA	82366	1,4	21442	1,5	59114	1,4	352	3,5	3596	2,2	1810	0,6
ARAD	132007	2,2	33408	2,4	92167	2,1	438	4,4	2974	1,8	6432	2,2
ARGES	146138	2,4	35897	2,6	104517	2,4	213	2,1	4219	2,5	5724	2,0
BACAU	143700	2,4	35606	2,6	101745	2,4	1012	10,1	5280	3,2	6349	2,2
BIHOR	184772	3,1	40478	2,9	137162	3,2	304	3,0	4598	2,8	7132	2,5
BISTRITA-NASAUD	76700	1,3	17140	1,2	55593	1,3	82	0,8	1120	0,7	3967	1,4
BOTOSANI	55821	0,9	17262	1,2	36094	0,8	63	0,6	1563	0,9	2465	0,8
BRASOV	196195	3,3	42909	3,1	146478	3,4	152	1,5	4892	2,9	6808	2,3
BRAILA	78699	1,3	19681	1,4	57667	1,3	50	0,5	2540	1,5	1351	0,5
BUZAU	111208	1,9	25902	1,9	80751	1,9	178	1,8	2109	1,3	4555	1,6
CARAS-SEVERIN	80027	1,3	17039	1,2	56602	1,3	121	1,2	1922	1,2	6386	2,2
CALARASI	53586	0,9	14271	1,0	37067	0,9	77	0,8			2248	0,8
CLUJ	259190	4,3	62828	4,5	192617	4,5	253	2,5			3745	1,3
CONSTANTA	261960	4,4	59145	4,3	186577	4,3	956	9,6	10621	6,4	16238	5,6
COVASNA	56937	0,9	11881	0,9	42447	1,0	39	0,4	1175	0,7	2609	0,9
DAMBOVITA	93336	1,6	26147	1,9	58627	1,4	57	0,6	2951	1,8	8562	2,9
DOLJ	156735	2,6	36934	2,7	111415	2,6	217	2,2	5633	3,4	8386	2,9
GALATI	171129	2,8	33257	2,4	129076	3,0	174	1,7	5370	3,2	8796	3,0
GIURGIU	40003	0,7	11239	0,8	25569	0,6	49	0,5			3195	1,1
GORJ	79797	1,3	16812	1,2	59150	1,4	107	1,1	2667	1,6	3835	1,3
HARGHITA	85165	1,4	20441	1,5	63145	1,5	45	0,4			1579	0,5
HUNEDOARA	113651	1,9	28966	2,1	76542	1,8	142	1,4	2944	1,8	8143	2,8
IALOMITA	59109	1,0	13373	1,0	42188	1,0	75	0,7	1586	1,0	3548	1,2
IASI	205240	3,4	41893	3,0	155525	3,6	185	1,8	4224	2,5	7822	2,7
MARAMURES	121010	2,0	36077	2,6	79616	1,8	166	1,7	2924	1,8	5317	1,8
MEHEDINTI	63634	1,1	16203	1,2	41903	1,0	64	0,6	3085	1,9	5528	1,9
MURES	144779	2,4	35024	2,5	104499	2,4	128	1,3	2942	1,8	5256	1,8
NEAMT	118109	2,0	31393	2,3	81360	1,9	309	3,1	2435	1,5	5356	1,8
OLT	86697	1,4	20391	1,5	59322	1,4	64	0,6	2033	1,2	6984	2,4
PRAHOVA	215347	3,6	45686	3,3	161441	3,7	282	2,8	3934	2,4	8220	2,8
SALAJ	47398	0,8	13040	0,9	31768	0,7	38	0,4	683	0,4	2590	0,9
SATU MARE	96400	1,6	23214	1,7	66445	1,5	32	0,3	2934	1,8	6741	2,3
SIBIU	131921	2,2	26349	1,9	101465	2,3	62	0,6	2583	1,6	4107	1,4
SUCEAVA	150038	2,5	35776	2,6	101992	2,4	28	0,3	2387	1,4	12270	4,2
TELEORMAN	68725	1,1	16021	1,2	51034	1,2	71	0,7	1504	0,9	1670	0,6
TIMIS	233943	3,9	47028	3,4	177440	4,1	292	2,9	7273	4,4	9475	3,3
TULCEA	61883	1,0	14474	1,0	44872	1,0	148	1,5	1002	0,6	2537	0,9
VASLUI	67644	1,1	18301	1,3	45111	1,0	41	0,4	1385	0,8	4232	1,5
VALCEA	98576	1,6	23574	1,7	70115	1,6	102	1,0	1888	1,1	4887	1,7
VRANCEA	76782	1,3	17477	1,3	57316	1,3	48	0,5	1594	1,0	1989	0,7
MUN. BUCURESTI	1228366	20,4	265225	19,1	894763	20,7	2743	27,4	51406	31,0	68378	23,5
ILFOV	72632	1,2	20371	1,5	49035	1,1	47	0,5	1879	1,1	3226	1,1

\*) according to the effect of Law No. 314/2001, art.1 și art. 6

\*\*\* Less than 0,01%

Table no. 2

**Operations registered in the Trade Register, by categories  
during the period of December 1990 - September 2005, in total by country and counties,  
- rate of categories of operations in total operations/country -**

Counties	Total of registered operations		out of which :									
			Registered companies		Changes in statutory documents		out of which :				Strike off companies	
	of liquidation, dissolution						out of which :					
	No.	%	No.	%	No.	%	No.	%	No.	%	No.	%
0	1	2	3	4	5	6	7	8	9	10	11	12
<b>Total ROMÂNIA</b>	<b>6007355</b>	<b>100,0</b>	<b>1389575</b>	<b>23,1</b>	<b>4327332</b>	<b>72,0</b>	<b>10006</b>	<b>0,2</b>	<b>165855</b>	<b>2,8</b>	<b>290448</b>	<b>4,8</b>
ALBA	82366	100,0	21442	26,0	59114	71,8	352	0,4	3596	4,4	1810	2,2
ARAD	132007	100,0	33408	25,3	92167	69,8	438	0,3	2974	2,3	6432	4,9
ARGES	146138	100,0	35897	24,6	104517	71,5	213	0,1	4219	2,9	5724	3,9
BACAU	143700	100,0	35606	24,8	101745	70,8	1012	0,7	5280	3,7	6349	4,4
BIHOR	184772	100,0	40478	21,9	137162	74,2	304	0,2	4598	2,5	7132	3,9
BISTRITA-NASAUD	76700	100,0	17140	22,3	55593	72,5	82	0,1	1120	1,5	3967	5,2
BOTOSANI	55821	100,0	17262	30,9	36094	64,7	63	0,1	1563	2,8	2465	4,4
BRASOV	196195	100,0	42909	21,9	146478	74,7	152	0,1	4892	2,5	6808	3,5
BRAILA	78699	100,0	19681	25,0	57667	73,3	50	0,1	2540	3,2	1351	1,7
BUZAU	111208	100,0	25902	23,3	80751	72,6	178	0,2	2109	1,9	4555	4,1
CARAS-SEVERIN	80027	100,0	17039	21,3	56602	70,7	121	0,2	1922	2,4	6386	8,0
CALARASI	53586	100,0	14271	26,6	37067	69,2	77	0,1			2248	4,2
CLUJ	259190	100,0	62828	24,2	192617	74,3	253	0,1			3745	1,4
CONSTANTA	261960	100,0	59145	22,6	186577	71,2	956	0,4	10621	4,1	16238	6,2
COVASNA	56937	100,0	11881	20,9	42447	74,6	39	0,1	1175	2,1	2609	4,6
DAMBOVITA	93336	100,0	26147	28,0	58627	62,8	57	0,1	2951	3,2	8562	9,2
DOLJ	156735	100,0	36934	23,6	111415	71,1	217	0,1	5633	3,6	8386	5,4
GALATI	171129	100,0	33257	19,4	129076	75,4	174	0,1	5370	3,1	8796	5,1
GIURGIU	40003	100,0	11239	28,1	25569	63,9	49	0,1			3195	8,0
GORJ	79797	100,0	16812	21,1	59150	74,1	107	0,1	2667	3,3	3835	4,8
HARGHITA	85165	100,0	20441	24,0	63145	74,1	45	0,1			1579	1,9
HUNEDOARA	113651	100,0	28966	25,5	76542	67,3	142	0,1	2944	2,6	8143	7,2
IALOMITA	59109	100,0	13373	22,6	42188	71,4	75	0,1	1586	2,7	3548	6,0
IASI	205240	100,0	41893	20,4	155525	75,8	185	0,1	4224	2,1	7822	3,8
MARAMURES	121010	100,0	36077	29,8	79616	65,8	166	0,1	2924	2,4	5317	4,4
MEHEDINTI	63634	100,0	16203	25,5	41903	65,9	64	0,1	3085	4,8	5528	8,7
MURES	144779	100,0	35024	24,2	104499	72,2	128	0,1	2942	2,0	5256	3,6
NEAMT	118109	100,0	31393	26,6	81360	68,9	309	0,3	2435	2,1	5356	4,5
OLT	86697	100,0	20391	23,5	59322	68,4	64	0,1	2033	2,3	6984	8,1
PRAHOVA	215347	100,0	45686	21,2	161441	75,0	282	0,1	3934	1,8	8220	3,8
SALAJ	47398	100,0	13040	27,5	31768	67,0	38	0,1	683	1,4	2590	5,5
SATU MARE	96400	100,0	23214	24,1	66445	68,9	32	0,0	2934	3,0	6741	7,0
SIBIU	131921	100,0	26349	20,0	101465	76,9	62	0,0	2583	2,0	4107	3,1
SUCEAVA	150038	100,0	35776	23,8	101992	68,0	28	0,0	2387	1,6	12270	8,2
TELEORMAN	68725	100,0	16021	23,3	51034	74,3	71	0,1	1504	2,2	1670	2,4
TIMIS	233943	100,0	47028	20,1	177440	75,8	292	0,1	7273	3,1	9475	4,1
TULCEA	61883	100,0	14474	23,4	44872	72,5	148	0,2	1002	1,6	2537	4,1
VASLUI	67644	100,0	18301	27,1	45111	66,7	41	0,1	1385	2,0	4232	6,3
VALCEA	98576	100,0	23574	23,9	70115	71,1	102	0,1	1888	1,9	4887	5,0
VRANCEA	76782	100,0	17477	22,8	57316	74,6	48	0,1	1594	2,1	1989	2,6
MUN. BUCURESTI	1228366	100,0	265225	21,6	894763	72,8	2743	0,2	51406	4,2	68378	5,6
ILFOV	72632	100,0	20371	28,0	49035	67,5	47	0,1	1879	2,6	3226	4,4

\*) according to the effect of Law No. 314/2001, art.1 și art. 6

\*\*\* Less than 0,01%

Table no.3

**Number and structure of incorporations in the Trade Register, by years,  
during the period of December 1990 - September 2005**

Period (year, month)	Registered companies	Percentage	
	No.	%	%
0	1	2	3
<b>Total, 31 September 2005, out of which</b>	<b>1389575</b>	<b>100,00</b>	
Year 1990	81	0,01	
Year 1991	95840	6,90	
Year 1992	137456	9,89	
Year 1993	117078	8,43	
Year 1994	137445	9,89	
Year 1995	65479	4,71	
Year 1996	62089	4,47	
Year 1997	55663	4,01	
Year 1998	63878	4,60	
Year 1999	57197	4,12	
Year 2000	57291	4,12	
Year 2001	61265	4,41	
Year 2002	84780	6,10	
Year 2003	123582	8,89	
Year 2004	144284	10,38	
<b>Year 2003 (1.I - 31.VII), out of which :</b>	<b>126167</b>	<b>9,08</b>	<b>3900,0</b>
January	10148		8,0
February	16238		12,9
March	20378		16,2
April	16782		13,3
May	14305		11,3
June	14380		11,4
July	11522		9,13
August	11453		9,08
September	10961		8,69

Note: Column 2 reveals the annual structure of incorporations; column 3 reveals the structure by months during the current year.

\*\*\* Less than 0,01%

**Diagram no.1**

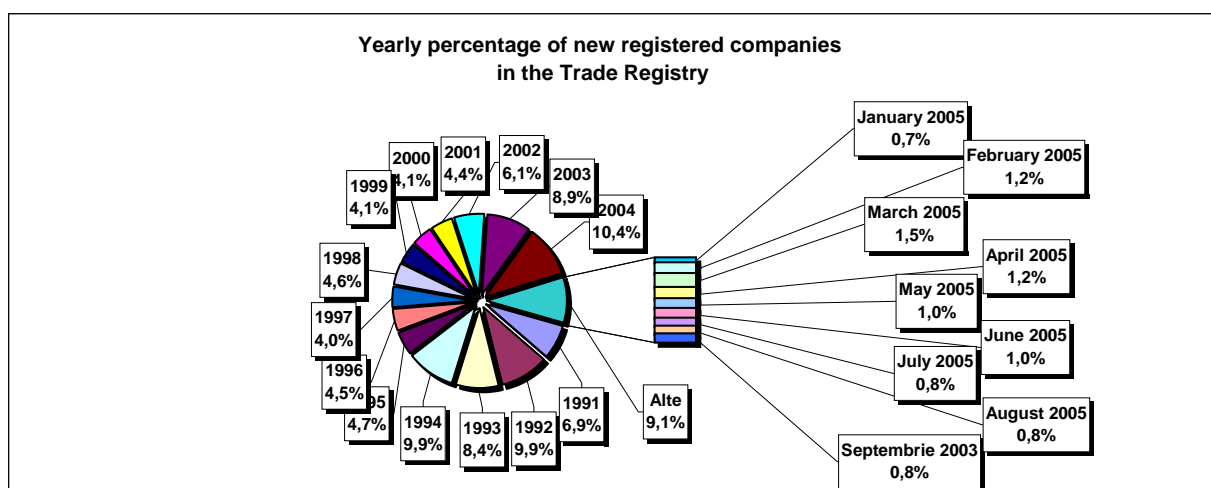


Table no. 4

**The number of incorporations in the Trade Register, by counties and sources of capital, in the period December 1990 - September 2005**

Counties	Total		out of which:					Ranking by: *	
			Private capital			State majority capital			Mixed capital (state+private)
			out of which:			out of which:			
			PF+AF	Companies	OC	RA	Companies		Companies
No.	%	No.	No.	No.	No.	No.	No.		
0	1	2	3	4	5	6	7	8	9
<b>Total ROMÂNIA</b>	<b>1389575</b>	<b>100,0</b>	<b>347322</b>	<b>1024646</b>	<b>5384</b>	<b>1320</b>	<b>2350</b>	<b>8553</b>	<b>X</b>
ALBA	21442	1,5	7214	13835	141	35	47	170	24
ARAD	33409	2,4	12870	19983	157	26	40	333	15
ARGES	35897	2,6	11635	23884	168	29	29	152	11
BACAU	35606	2,6	11776	23373	158	34	42	223	13
BIHOR	40478	2,9	7837	32092	145	35	62	307	8
BISTRITA-NASAUD	17140	1,2	6075	10810	98	19	29	109	32
BOTOSANI	17262	1,2	7619	9209	122	21	172	119	31
BRASOV	42909	3,1	8372	34128	114	40	87	168	6
BRAILA	19681	1,4	4774	14575	96	28	43	165	28
BUZAU	25902	1,9	7323	18239	142	25	42	131	21
CARAS-SEVERIN	17039	1,2	5898	10804	102	33	65	137	33
CALARASI	14271	1,0	4073	9922	86	18	77	95	38
CLUJ	62828	4,5	15159	47166	150	52	40	261	2
CONSTANTA	59145	4,3	11112	47192	203	50	48	540	3
COVASNA	11881	0,9	3805	7844	67	24	32	109	41
DAMBOVITA	26147	1,9	12128	13629	134	29	75	152	20
DOLJ	36934	2,7	6811	29664	162	40	56	201	9
GALATI	33257	2,4	6096	26802	135	30	51	143	16
GIURGIU	11239	0,8	2554	8365	80	21	109	110	42
GORJ	16812	1,2	3619	12776	184	50	83	100	34
HARGHITA	20441	1,5	7549	12512	85	23	43	229	25
HUNEDOARA	28966	2,1	7586	20888	81	37	92	282	18
IALOMITA	13373	1,0	5137	8010	74	15	46	91	39
IASI	41893	3,0	11223	30059	164	33	70	344	7
MARAMURES	36077	2,6	14888	20869	121	37	39	123	10
MEHEDINTI	16203	1,2	4919	11059	82	19	26	98	35
MURES	35024	2,5	12898	21741	154	30	34	167	14
NEAMT	31393	2,3	11455	19553	161	29	30	165	17
OLT	20391	1,5	8139	11878	161	26	64	123	26
PRAHOVA	45686	3,3	13550	31572	177	50	66	271	5
SALAJ	13040	0,9	5007	7819	107	19	27	61	40
SATU MARE	23214	1,7	7205	15727	88	19	41	134	23
SIBIU	26349	1,9	6110	19826	116	31	108	158	19
SUCEAVA	35776	2,6	17109	18152	201	30	64	220	12
TELEORMAN	16021	1,2	5414	10213	152	21	41	180	36
TIMIS	47028	3,4	6853	39585	140	37	68	345	4
TULCEA	14474	1,0	4577	9559	66	18	42	212	37
VASLUI	18301	1,3	9001	8999	109	16	41	135	29
VALCEA	23574	1,7	9250	13966	168	40	37	113	22
VRANCEA	17477	1,3	5221	11997	103	16	27	113	30
MUN. BUCURESTI	265224	19,1	14990	248774	138	115	103	1104	1
ILFOV	20371	1,5	2491	17596	92	20	12	160	27

\*) The total number of incorporations (col 1)

\*\*\* Less than 0,01%

Table no. 5

**The number of incorporations in the Trade Register,  
by counties and categories, during the period of  
December 1990 - September 2005**

County	Total		out of which:						
			PF+AF	companies: 1035549				RA	OC
	SNC	SCS		SRL	SA				
	No.	%	No.	No.	No.	No.	No.	No.	
0	1	2	3	4	5	6	7	8	9
<b>Total ROMÂNIA</b>	<b>1389575</b>	<b>100,0</b>	<b>347322</b>	<b>32635</b>	<b>1553</b>	<b>970519</b>	<b>30836</b>	<b>1320</b>	<b>5384</b>
ALBA	21442	1,5	7214	888	11	12617	536	35	141
ARAD	33408	2,4	12870	51	8	19653	642	26	157
ARGES	35897	2,6	11635	107	14	23158	786	29	168
BACAU	35606	2,6	11776	1299	4	21640	694	34	158
BIHOR	40478	2,9	7837	125	47	31419	870	35	145
BISTRITA-NASAUD	17140	1,2	6075	146	21	10381	400	19	98
BOTOSANI	17262	1,2	7619	468	1	8596	435	21	122
BRASOV	42909	3,1	8372	239	19	33318	807	40	114
BRAILA	19681	1,4	4774	376	12	13897	498	28	96
BUZAU	25902	1,9	7323	3747	46	14075	544	25	142
CARAS-SEVERIN	17039	1,2	5898	117	8	10431	450	33	102
CALARASI	14271	1,0	4073	609	3	9140	342	18	86
CLUJ	62828	4,5	15159	2110	18	44156	1183	52	150
CONSTANTA	59145	4,3	11112	311	23	46019	1427	50	203
COVASNA	11881	0,9	3805	148	4	7545	288	24	67
DAMBOVITA	26147	1,9	12128	60	8	13314	474	29	134
DOLJ	36934	2,7	6811	1560	8	27511	842	40	162
GALATI	33257	2,4	6096	1574	6	24613	803	30	135
GIURGIU	11239	0,8	2554	35	8	8229	312	21	80
GORJ	16812	1,2	3619	28	1	12463	467	50	184
HARGHITA	20441	1,5	7549	62	6	12245	471	23	85
HUNEDOARA	28966	2,1	7586	1166	98	19351	647	37	81
IALOMITA	13373	1,0	5137	266	11	7542	328	15	74
IASI	41893	3,0	11223	506	111	28885	969	33	164
MARAMURES	36077	2,6	14888	1926	23	18509	572	37	121
MEHEDINTI	16203	1,2	4919	427	3	10438	315	19	82
MURES	35024	2,5	12898	37	34	21241	630	30	154
NEAMT	31393	2,3	11455	3293	30	15780	645	29	161
OLT	20391	1,5	8139	1611	1	9979	474	26	161
PRAHOVA	45686	3,3	13550	3121	12	27927	849	50	177
SALAJ	13040	0,9	5007	600	4	7029	274	19	107
SATU MARE	23214	1,7	7205	283	5	15164	450	19	88
SIBIU	26349	1,9	6110	775	48	18648	621	31	116
SUCEAVA	35776	2,6	17109	438	8	17427	563	30	201
TELEORMAN	16021	1,2	5414	272	399	9364	399	21	152
TIMIS	47028	3,4	6853	604	26	38169	1199	37	140
TULCEA	14474	1,0	4577	1363	112	7876	462	18	66
VASLUI	18301	1,3	9001	90	11	8681	393	16	109
VALCEA	23574	1,7	9250	363	6	13286	461	40	168
VRANCEA	17477	1,3	5221	356	10	11337	434	16	103
MUN. BUCURESTI	265225	19,1	14990	1029	295	242331	6326	115	138
ILFOV	20371	1,5	2491	49	30	17135	554	20	92

Table no. 6

**The number of incorporations in the Trade Register, by field of activity\*  
during the period of December 1990 - September 2005**

CAEN segment	Field of activity	Total		out of which:						
				PF+AF	companies: 1035549				RA	OC
		No.	%		No.	SNC	SCS	SRL		
				No.		No.	No.	No.	No.	No.
0	1	2	3	4	5	6	7	8	9	10
	<b>Total ROMANIA</b>	<b>1389575</b>	<b>100,0</b>	<b>347322</b>	<b>32635</b>	<b>1553</b>	<b>970519</b>	<b>30836</b>	<b>1320</b>	<b>5384</b>
1	Agriculture, hunting and related service activities	53669	3,9	10112	2023	44	37555	3767	51	117
2	Forestry, logging and related service activities	7396	0,5	915	152	3	6022	218	78	8
5	Fishing, fish farming and related service activities	2256	0,2	1184	17	3	999	53		
10	Mining of coal and lignite; extraction of peat	98	0,0	2			64	28	4	
11	Extraction of crude petroleum and natural gas; service activities incidental to oil and gas extraction, excluding surveying	307	0,0	3	1		136	121	46	
12	Mining of uranium and thorium ores	133	0,0	32			95	6		
13	Mining of metal ores	521	0,0	163			295	55	8	
14	Other mining and quarrying	1357	0,1	104	9	1	1073	167	2	1
15	Manufacture of food products and beverages	70796	5,1	13159	3260	149	52146	1829	5	248
16	Manufacture of tobacco products	284	0,0	47			205	31	1	
17	Manufacture of textiles	11190	0,8	2199	556	16	7870	405		144
18	Manufacture of wearing apparel; dressing and dyeing of fur	19689	1,4	4368	875	38	13747	355	1	305
19	Tanning and dressing of leather; manufacture of luggage, handbags, saddlery, harness and footwear	4957	0,4	848	112	6	3817	122	1	51
20	Manufacture of wood and of products of wood and cork, except furniture; manufacture of articles of straw and plaiting materials	23035	1,7	7912	575	29	13974	494	9	42
21	Manufacture of pulp, paper and paper products	1642	0,1	106	21	1	1404	97		13
22	Publishing, printing and reproduction of recorded media	10869	0,8	878	317	21	9232	397	14	10
23	Manufacture of coke, refined petroleum products and nuclear fuel	249	0,0	24			189	34	2	
24	Manufacture of chemicals and chemical products	3517	0,3	114	89	1	2929	372	6	6
25	Manufacture of rubber and plastic products	5610	0,4	527	313	7	4482	256		24
26	Manufacture of other non-metallic mineral products	8171	0,6	2443	212	6	5114	378	5	13
27	Manufacture of basic metals	2349	0,2	164	39	3	1927	206	3	7
28	Manufacture of fabricated metal products, except machinery and equipment	14884	1,1	3298	361	23	10413	716	11	62
29	Manufacture of machinery and equipment n.e.c.	3548	0,3	94	44	7	2961	418	19	5
30	Manufacture of office machinery and computers	1719	0,1	15	25	4	1595	80		
31	Manufacture of electrical machinery and apparatus n.e.c.	1797	0,1	103	44	6	1495	143		6
32	Manufacture of radio, television and communication equipment and apparatus	810	0,1	50	14	4	668	73		1
33	Manufacture of medical, precision and optical instruments, watches and clocks	2254	0,2	539	17	2	1594	98		4
34	Manufacture of motor vehicles, trailers and semi-trailers	846	0,1	29	31	3	659	122		2
35	Manufacture of other transport equipment	1718	0,1	259	86	7	1170	121	73	2
36	Manufacture of furniture; manufacturing n.e.c.	13938	1,0	3891	284	16	9257	327	5	158
37	Recycling	4366	0,3	387	51	5	3752	170		1
40	Electricity, gas, steam and hot water supply	2786	0,2	833	3	1	1365	496	88	
41	Collection, purification and distribution of water	3509	0,3	1614	2		1634	186	73	
45	Construction	72689	5,2	19289	611	42	50242	2375	53	77

*\*)Field of activity declared when registered, according to CAEN classification*

**Table no. 6**  
(continuing)

**The number of incorporations in the Trade Register, by field of activity\*  
and categories, during the period of December 1990 - September 2005**

CAEN segment	Field of activity	Total		out of which:						
				PF+AF	companies: 1035549				RA	OC
					SNC	SCS	SRL	SA		
					No.	No.	No.	No.		
0	1	2	3	4	5	6	7	8	9	10
	<b>Total ROMÂNIA</b>	<b>1389575</b>	<b>100,0</b>	<b>347322</b>	<b>32635</b>	<b>1553</b>	<b>970519</b>	<b>30836</b>	<b>1320</b>	<b>5384</b>
50	Sale, maintenance and repair of motor vehicles and motorcycles; retail sale of automotive fuel	49447	3,6	7467	1244		39633	1022	5	42
51	Wholesale trade and commission trade, except of motor vehicles and motorcycles	185747	13,4	14438	4523	148	163067	3255	35	281
52	Retail trade, except of motor vehicles and motorcycles; repair of personal and household goods	464982	33,5	162513	11914	556	285137	2479	5	2377
55	Hotels and restaurants	52958	3,8	12773	1634	126	37489	768	73	95
60	Land transport; transport via pipelines	70934	5,1	32006	844	36	36961	1044	33	10
61	Water transport	805	0,1	147	82	8	433	64	70	1
62	Air transport	278	0,0	17			207	44	10	
63	Supporting and auxiliary transport activities; activities of travel agencies	9015	0,6	535	220	14	7710	429	96	11
64	Post and telecommunications	5708	0,4	371	11	1	5021	290	11	3
65	Financial intermediation, except insurance and pension funding	5515	0,4	142	15		2341	1983	2	1032
66	Insurance and pension funding, except compulsory social security	1942	0,1	605	1		499	836		1
67	Activities auxiliary to financial intermediation	5796	0,4	1233	6	2	4275	272		8
70	Real estate activities	15822	1,1	640	28	8	14588	535	17	6
71	Renting of machinery and equipment without operator and of personal and household goods	2817	0,2	576	116	8	1954	92	70	1
72	Computer and related activities	18293	1,3	2663	119	13	15112	381	2	3
73	Research and development	1571	0,1	233	11	2	1113	167	43	2
74	Other business activities	87609	6,3	17613	783	70	67393	1583	106	60
75	Public administration and defence; compulsory social security	353	0,0	87	5		214	25	21	1
80	Education	5741	0,4	3029	62	5	2580	65		
85	Health and social work	14423	1,0	2061	233	15	12031	79	3	1
90	Sewage and refuse disposal, sanitation and similar activities	729	0,1	73	13	2	521	100	18	
91	Activities of membership organizations n.e.c.	206	0,0	90	1		97	15		3
92	Recreational, cultural and sporting activities	13246	1,0	2992	202	14	9678	282	66	12
93	Other service activities	22051	1,6	9000	418	42	12083	305	76	126
95	Activities of households as employers of domestic staff	572	0,0	280	6	1	281	3		1
96	Extra-territorial organizations and bodies	1	0,0	1						

\*)Field of activity declared when registered, according to CAEN classification

Table no. 7

**Operations carried on with the Trade Registers,  
by counties and categories,  
in September 2005**

County	Total of operations carried on		out of which:							
			New incorporations		Changes in statutory documents		out of which: of liquidation, dissolution		Strike off companies	
	No.	%	No.	%	No.	%	No.	%	No.	%
0	1	2	3	4	5	6	7	8	9	10
<b>Total ROMÂNIA</b>	<b>69701</b>	<b>100,0</b>	<b>10961</b>	<b>15,7</b>	<b>55302</b>	<b>79,3</b>	<b>349</b>	<b>0,5</b>	<b>3438</b>	<b>4,9</b>
ALBA	946	100,0	189	20,0	721	76,2	3	0,3	36	3,8
ARAD	1552	100,0	285	18,4	1241	80,0	8	0,5	26	1,7
ARGES	1187	100,0	325	27,4	830	69,9	3	0,3	32	2,7
BACAU	834	100,0	292	35,0	518	62,1	4	0,5	24	2,9
BIHOR	1749	100,0	294	16,8	1395	79,8	3	0,2	60	3,4
BISTRITA-NASAUD	804	100,0	115	14,3	525	65,3	10	1,2	164	20,4
BOTOSANI	485	100,0	175	36,1	256	52,8			54	11,1
BRASOV	1915	100,0	345	18,0	1533	80,1	10	0,5	37	1,9
BRAILA	702	100,0	150	21,4	518	73,8	3	0,4	34	4,8
BUZAU	913	100,0	175	19,2	705	77,2	2	0,2	33	3,6
CARAS-SEVERIN	561	100,0	134	23,9	422	75,2	7	1,2	5	0,9
CALARASI	334	100,0	100	29,9	231	69,2	1	0,3	3	0,9
CLUJ	5587	100,0	522	9,3	5024	89,9	8	0,1	41	0,7
CONSTANTA	3572	100,0	448	12,5	2989	83,7	36	1,0	135	3,8
COVASNA	542	100,0	90	16,6	440	81,2	3	0,6	12	2,2
DAMBOVITA	3980	100,0	170	4,3	2076	52,2	1	0,0	1734	43,6
DOLJ	1272	100,0	352	27,7	871	68,5	4	0,3	49	3,9
GALATI	2029	100,0	315	15,5	1687	83,1	46	2,3	27	1,3
GIURGIU	268	100,0	94	35,1	164	61,2	1	0,4	10	3,7
GORJ	674	100,0	111	16,5	541	80,3	3	0,4	22	3,3
HARGHITA	874	100,0	191	21,9	650	74,4	2	0,2	33	3,8
HUNEDOARA	2466	100,0	220	8,9	2232	90,5	10	0,4	14	0,6
IALOMITA	477	100,0	93	19,5	326	68,3	1	0,2	58	12,2
IASI	3467	100,0	340	9,8	3112	89,8	3	0,1	15	0,4
MARAMURES	885	100,0	298	33,7	519	58,6	1	0,1	68	7,7
MEHEDINTI	397	100,0	100	25,2	287	72,3	3	0,8	10	2,5
MURES	3486	100,0	284	8,1	3132	89,8	61	1,7	70	2,0
NEAMT	1043	100,0	249	23,9	724	69,4	4	0,4	70	6,7
OLT	566	100,0	131	23,1	420	74,2			15	2,7
PRAHOVA	1845	100,0	378	20,5	1311	71,1	17	0,9	156	8,5
SALAJ	388	100,0	115	29,6	259	66,8	4	1,0	14	3,6
SATU MARE	868	100,0	187	21,5	671	77,3	3	0,3	10	1,2
SIBIU	1669	100,0	260	15,6	1371	82,1	3	0,2	38	2,3
SUCEAVA	922	100,0	254	27,5	639	69,3	1	0,1	29	3,1
TELEORMAN	604	100,0	125	20,7	453	75,0	7	1,2	26	4,3
TIMIS	2536	100,0	465	18,3	2060	81,2	2	0,1	11	0,4
TULCEA	441	100,0	89	20,2	315	71,4	3	0,7	37	8,4
VASLUI	427	100,0	150	35,1	235	55,0	4	0,9	42	9,8
VALCEA	875	100,0	195	22,3	632	72,2			48	5,5
VRANCEA	898	100,0	140	15,6	738	82,2	2	0,2	20	2,2
MUN. BUCURESTI	13663	100,0	1776	13,0	11783	86,2	55	0,4	104	0,8
ILFOV	998	100,0	240	24,0	746	74,7	7	0,7	12	1,2

\*) by effect of implementation of Law no. 314/2001, art.1 and art. 6

\*\*\* Less than 0,01%

Table no. 8

**The number of incorporations in the Trade Register,  
by counties and sources of capital,  
in September 2005**

County	Total		out of which:					Rnking by: *	
			Private capital			State majority capital			Mixed capital (state+private)
			out of which:			out of which:			
			PF+AF	Companies	OC	RA	Companies		Companies
No.	%	No.	No.	No.	No.	No.	No.		
0	1	2	3	4	5	6	7	8	9
<b>Total ROMÂNIA</b>	<b>10961</b>	<b>100,0</b>	<b>3785</b>	<b>7170</b>	<b>1</b>		<b>2</b>	<b>3</b>	<b>X</b>
ALBA	189	1,7	86	103					23
ARAD	285	2,6	102	183					14
ARGES	325	3,0	141	184					9
BACAU	292	2,7	111	181					13
BIHOR	294	2,7	103	190	1				12
BISTRITA-NASAUD	115	1,0	34	81					34
BOTOSANI	175	1,6	109	66					25
BRASOV	345	3,1	87	258					7
BRAILA	150	1,4	63	87					28
BUZAU	175	1,6	66	109					26
CARAS-SEVERIN	134	1,2	38	96					31
CALARASI	100	0,9	39	58			1	2	37
CLUJ	522	4,8	162	360					2
CONSTANTA	448	4,1	106	342					4
COVASNA	90	0,8	42	48					41
DAMBOVITA	170	1,6	75	95					27
DOLJ	352	3,2	130	222					6
GALATI	315	2,9	109	206					10
GIURGIU	94	0,9	47	47					39
GORJ	111	1,0	54	57					36
HARGHITA	191	1,7	116	75					22
HUNEDOARA	220	2,0	67	153					20
IALOMITA	93	0,8	45	48					40
IASI	340	3,1	125	215					8
MARAMURES	298	2,7	142	156					11
MEHEDINTI	100	0,9	48	52					38
MURES	284	2,6	102	182					15
NEAMT	249	2,3	116	133					18
OLT	131	1,2	64	67					32
PRAHOVA	378	3,4	160	218					5
SALAJ	115	1,0	52	63					35
SATU MARE	187	1,7	81	106					24
SIBIU	260	2,4	95	165					16
SUCEAVA	254	2,3	130	123			1		17
TELEORMAN	125	1,1	62	63					33
TIMIS	465	4,2	141	324					3
TULCEA	89	0,8	48	41					42
VASLUI	150	1,4	73	77					29
VALCEA	195	1,8	97	98					21
VRANCEA	140	1,3	59	81					30
MUN. BUCURESTI	1776	16,2	208	1567				1	1
ILFOV	240	2,2	50	190					19

\*) The total number of incorporations (col 1)

\*\*\* Less than 0,01%

Table no.9

**The number of incorporations in the Trade Register,  
by counties and category  
in September 2005**

County	Total		out of which:					RA	OC
			PF+AF	companies: 7175					
	No.	%		No.	SNC	SCS	SRL	SA	No.
			No.		No.	No.	No.		
0	1	2	3	4	5	6	7	8	9
<b>Total ROMÂNIA</b>	<b>10961</b>	<b>100,0</b>	<b>3785</b>	<b>4</b>	<b>1</b>	<b>7110</b>	<b>60</b>		<b>1</b>
ALBA	189	1,7	86			101	2		
ARAD	285	2,6	102			183			
ARGES	325	3,0	141			184			
BACAU	292	2,7	111			181			
BIHOR	294	2,7	103			189	1		1
BISTRITA-NASAUD	115	1,0	34			81			
BOTOSANI	175	1,6	109			66			
BRASOV	345	3,1	87			256	2		
BRAILA	150	1,4	63			86	1		
BUZAU	175	1,6	66			109			
CARAS-SEVERIN	134	1,2	38	1		93	2		
CALARASI	100	0,9	39			58	3		
CLUJ	522	4,8	162			359	1		
CONSTANTA	448	4,1	106			341	1		
COVASNA	90	0,8	42			47	1		
DAMBOVITA	170	1,6	75			95			
DOLJ	352	3,2	130			220	2		
GALATI	315	2,9	109			203	3		
GIURGIU	94	0,9	47			47			
GORJ	111	1,0	54			57			
HARGHITA	191	1,7	116			75			
HUNEDOARA	220	2,0	67			153			
IALOMITA	93	0,8	45			47	1		
IASI	340	3,1	125			212	3		
MARAMURES	298	2,7	142			155	1		
MEHEDINTI	100	0,9	48			52			
MURES	284	2,6	102			181	1		
NEAMT	249	2,3	116			133			
OLT	131	1,2	64			67			
PRAHOVA	378	3,4	160			214	4		
SALAJ	115	1,0	52			63			
SATU MARE	187	1,7	81			105	1		
SIBIU	260	2,4	95			164	1		
SUCEAVA	254	2,3	130			121	3		
TELEORMAN	125	1,1	62			63			
TIMIS	465	4,2	141	2		321	1		
TULCEA	89	0,8	48			41			
VASLUI	150	1,4	73			76	1		
VALCEA	195	1,8	97			97	1		
VRANCEA	140	1,3	59		1	79	1		
MUN. BUCURESTI	1776	16,2	208	1		1548	19		
ILFOV	240	2,2	50			187	3		

Table no. 10

**The number of incorporations in the Trade Register, by field of activity\*  
and categories in September 2005**

CAEN segment	Field of activity	Total		out of which:						RA	OC
				PF+AF	companies: 7175						
		No.	%		No.	SNC	SCS	SRL	SA	No.	No.
				No.		No.	No.	No.			
0	1	2	3	4	5	6	7	8	9	10	
	<b>Total ROMANIA</b>	<b>10961</b>	<b>100,0</b>	<b>3785</b>	<b>4</b>	<b>1</b>	<b>7110</b>	<b>60</b>		<b>1</b>	
1	Agriculture, hunting and related service activities	447	4,1	243			202	2			
2	Forestry, logging and related service activities	41	0,4	14			27				
5	Fishing, fish farming and related service activities	25	0,2	17			8				
10	Mining of coal and lignite; extraction of peat										
11	Extraction of crude petroleum and natural gas; service activities incidental to oil and gas extraction, excluding surveying										
12	Mining of uranium and thorium ores										
13	Mining of metal ores	1	0,0				1				
14	Other mining and quarrying	9	0,1				9				
15	Manufacture of food products and beverages	235	2,1	134			99	2			
16	Manufacture of tobacco products										
17	Manufacture of textiles	34	0,3	13			21				
18	Manufacture of wearing apparel; dressing and dyeing of fur	81	0,7	35			46				
19	Tanning and dressing of leather; manufacture of luggage, handbags, saddlery, harness and footwear	21	0,2	3			18				
20	Manufacture of wood and of products of wood and cork, except furniture; manufacture of articles of straw and plaiting materials	200	1,8	122			77	1			
21	Manufacture of pulp, paper and paper products	6	0,1				6				
22	Publishing, printing and reproduction of recorded media	63	0,6	3			60				
23	Manufacture of coke, refined petroleum products and nuclear fuel	1	0,0				1				
24	Manufacture of chemicals and chemical products	15	0,1	1			14				
25	Manufacture of rubber and plastic products	37	0,3	1			36				
26	Manufacture of other non-metallic mineral products	57	0,5	21			36				
27	Manufacture of basic metals	3	0,0				3				
28	Manufacture of fabricated metal products, except machinery and equipment	151	1,4	58			92	1			
29	Manufacture of machinery and equipment n.e.c.	14	0,1	1			12	1			
30	Manufacture of office machinery and computers	3	0,0	1			2				
31	Manufacture of electrical machinery and apparatus n.e.c.	11	0,1	1			10				
32	Manufacture of radio, television and communication equipment and apparatus	1	0,0				1				
33	Manufacture of medical, precision and optical instruments, watches and clocks	15	0,1	3			11	1			
34	Manufacture of motor vehicles, trailers and semi- trailers	5	0,0				4	1			
35	Manufacture of other transport equipment	7	0,1	1			6				
36	Manufacture of furniture; manufacturing n.e.c.	113	1,0	34			79				
37	Recycling	36	0,3	3			32	1			
40	Electricity, gas, steam and hot water supply	9	0,1				7	2			
41	Collection, purification and distribution of water	7	0,1				3	4			
45	Construction	1116	10,2	352			759	5			

**Table no. 10**  
(continuance)

**The number of incorporations in the Trade Register, by field of activity\*  
and categories in September 2005**

CAEN segment	Field of activity	Total		out of which:						
				PF+AF	companies: 7175				RA	OC
		No.	%		No.	SNC	SCS	SRL		
				No.		No.	No.	No.	No.	No.
0	1	2	3	4	5	6	7	8	9	10
	<b>Total ROMÂNIA</b>	<b>10961</b>	<b>100,0</b>	<b>3785</b>	<b>4</b>	<b>1</b>	<b>7110</b>	<b>60</b>		<b>1</b>
50	Sale, maintenance and repair of motor vehicles and motorcycles; retail sale of automotive fuel	295	2,7	92			203			
51	Wholesale trade and commission trade, except of motor vehicles and motorcycles	1098	10,0	264			828	6		
52	Retail trade, except of motor vehicles and motorcycles; repair of personal and household goods	2837	25,9	1342			1494			1
55	Hotels and restaurants	479	4,4	108			366	5		
60	Land transport; transport via pipelines	664	6,1	295			367	2		
61	Water transport	4	0,0	2			2			
62	Air transport	2	0,0				2			
63	Supporting and auxiliary transport activities; activities of travel agencies	79	0,7	11			68			
64	Post and telecommunications	92	0,8	13			79			
65	Financial intermediation, except insurance and pension funding	56	0,5				41	15		
66	Insurance and pension funding, except compulsory social security	2	0,0	1				1		
67	Activities auxiliary to financial intermediation	34	0,3	1			33			
70	Real estate activities	339	3,1			1	334	4		
71	Renting of machinery and equipment without operator and of personal and household goods	33	0,3	6			27			
72	Computer and related activities	259	2,4	86			172	1		
73	Research and development	9	0,1				8	1		
74	Other business activities	1256	11,5	262	4		988	2		
75	Public administration and defence; compulsory social security									
80	Education	47	0,4	7			40			
85	Health and social work	117	1,1	5			111	1		
90	Sewage and refuse disposal, sanitation and similar activities	15	0,1	3			11	1		
91	Activities of membership organizations n.e.c.	1	0,0				1			
92	Recreational, cultural and sporting activities	193	1,8	65			128			
93	Other service activities	274	2,5	151			123			
95	Activities of households as employers of domestic staff	11	0,1	9			2			
96	Extra-territorial organizations and bodies	1	0,0	1						

\*)Field of activity declared when registered, according to CAEN classification

Table no. 11

**Number of companies registered and the amount  
of subscribed capital, by county  
in September 2005**

County	Total registered companies		Subscribed capital		Average subscribed capital on company
	No.	%	mil. ROL	%	mil. ROL
0	1	2	3	4	5
<b>Total ROMÂNIA</b>	<b>7175</b>	<b>100,0</b>	<b>67544,9</b>	<b>100,0</b>	<b>9,5</b>
ALBA	103	1,4	48,1	0,1	0,5
ARAD	183	2,6	9582,6	14,2	52,7
ARGES	184	2,6	106,2	0,2	0,6
BACAU	181	2,5	68,4	0,1	0,4
BIHOR	190	2,6	729,1	1,1	3,9
BISTRITA-NASAUD	81	1,1	157,4	0,2	1,9
BOTOSANI	66	0,9	902,0	1,3	13,7
BRASOV	258	3,6	1542,9	2,3	6,0
BRAILA	87	1,2	143,3	0,2	1,7
BUZAU	109	1,5	55,5	0,1	0,5
CARAS-SEVERIN	96	1,3	1336,4	2,0	13,9
CALARASI	61	0,9	218,4	0,3	3,6
CLUJ	360	5,0	743,3	1,1	2,1
CONSTANTA	342	4,8	211,0	0,3	0,6
COVASNA	48	0,7	562,8	0,8	12,0
DAMBOVITA	95	1,3	89,3	0,1	1,0
DOLJ	222	3,1	1968,0	2,9	8,9
GALATI	206	2,9	169,2	0,3	0,8
GIURGIU	47	0,7	55,4	0,1	1,2
GORJ	57	0,8	29,6	0,0	0,5
HARGHITA	75	1,0	38,3	0,1	0,5
HUNEDOARA	153	2,1	245,9	0,4	1,6
IALOMITA	48	0,7	292,8	0,4	6,2
IASI	215	3,0	5258,7	7,8	24,6
MARAMURES	156	2,2	53,5	0,1	0,3
MEHEDINTI	52	0,7	12,2	0,0	0,2
MURES	182	2,5	3095,6	4,6	17,2
NEAMT	133	1,9	481,3	0,7	3,6
OLT	67	0,9	21,6	0,0	0,3
PRAHOVA	218	3,0	278,1	0,4	1,3
SALAJ	63	0,9	23,4	0,0	0,4
SATU MARE	106	1,5	370,9	0,5	3,5
SIBIU	165	2,3	703,9	1,0	4,3
SUCEAVA	124	1,7	5914,3	8,8	47,7
TELEORMAN	63	0,9	17,8	0,0	0,3
TIMIS	324	4,5	906,7	1,3	2,8
TULCEA	41	0,6	18,3	0,0	0,4
VASLUI	77	1,1	126,9	0,2	1,6
VALCEA	98	1,4	425,7	0,6	4,3
VRANCEA	81	1,1	60,8	0,1	0,8
MUN. BUCURESTI	1568	21,9	21940,2	32,5	14,1
ILFOV	190	2,6	8539,1	12,6	45,2

*Note: The average does not include filials because according to the Law no.31/1990 they are not juridical persons*

\*\*\* Less than 0,01%

Table no. 12

**Number of registered companies and the amount  
of subscribed capital by category,  
in September 2005**

Company type	Total registered companies		Subscribed capital		Average subscribed capital on company
	No.	%	mil. ROL	%	mil. ROL
0	1	2	3	4	5
<b>Total ROMÂNIA</b>	7175	100,0	67544,9	100,0	9,5
SNC	4	0,1	1,9	***	0,5
SCS	1	0,0	1,0	***	1,0
SA	60	0,8	30087,2	44,5	752,2
SRL	7110	99,1	37454,7	55,5	5,3
SCA		***		***	-

*Note: The average does not include filials because according to the Law no.31/1990 they are not juridical persons*

\*\*\* Less than 0,01%

Diagram no.5

