



MINISTRY OF JUSTICE

THE NATIONAL TRADE REGISTER OFFICE

Bucharest, 2, Octavian Goga Blvd., sector 3; Phone: +40 - 21 - 320.60.13; Fax: +40 - 21 - 320.58.29; Website: www.onrc.ro; E-mail: onrc@onrc.ro

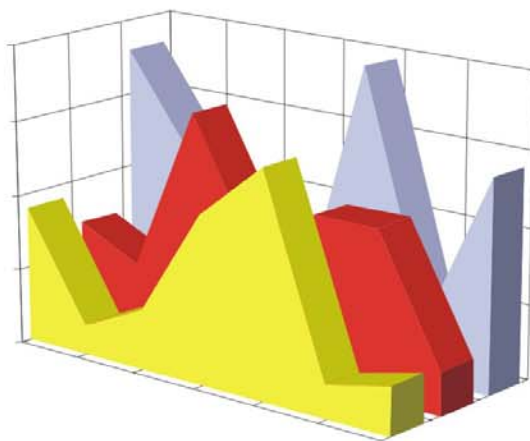
PROCEEDINGS IN THE CENTRAL TRADE REGISTER

STATISTICAL SYNTHESIS

OF

RECORDS IN THE CENTRAL TRADE REGISTER

- the 31th of August 2005 - provisional data -



- ISSUE No. 165 -

**MINISTRY OF JUSTICE
THE NATIONAL TRADE REGISTER OFFICE**

- Operations of incorporation of companies, changes in statutory documents and strike-off of companies are based on Law No.26/1990 reissued, Law No.31/1990, reissued, OUG No.76/2001, reissued and Methodology Norms No. P/608/1998.

- This paper presents the trend in operations registered in The Trade Register Office attached to the law court of Bucharest and in the Trade Register Offices attached to the law court in each county of Romania.

- Information recorded in the Central Trade Register concern operations compulsory by law to be registered in the trade registers within the 42 trade register offices attached to the law courts.

• No part of the content of this publication, in original or in any modified format, may be reproduced, stored in a retrieval system, or transmitted, in any form or by any means, without the prior permission in writing of The Ministry of Justice – The National Trade Register Office.

• The content of this publication may be referred to in articles, studies, books, as supporting or explanatory data under the condition only, the source of the information to be clearly and precisely specified.

Contents

	Page
1 Explanatory Note	1
2.1 Data for December 1990 – August 2005	3
Table no.1 – Operations registered in the Trade Register, by categories during the period of December 1990 – August 2005, in total by country and counties, rate of categories of operations in total operations country	3
Table no.1.a – Operations registered in the Trade Register, by categories during the period of December 1990 – August 2005, in total by country and counties, counties’ rate in total country	4
Table no. 3 – Number and structure of incorporations in the Trade Register, by years, during the period of December 1990- August 2005	5
Table no.4 – The number of incorporations in the Trade Register, by counties and sources of capital, in the period December 1990 - August 2005	6
Table no. 5 – The number of incorporations in the Trade Register, by counties and categories, during the period of December 1990 – August 2005	7
Table no. 6 – The number of incorporations in the Trade Register, by field of activity and categories, during the period of December 1990 - August 2005	8
2.2 Data for August 2005	10
Table no. 7 – Operations carried on with the Trade Registers, by counties and categories, in August 2005	10
Table no. 8 – The number of incorporations in the Trade Register, by counties and sources of capital, in August 2005	11
Table no. 9 – The number of incorporations in the Trade Register, by counties and category in August 2005	12
Table no. 10 –The number of incorporations in the Trade Register, by field of activity and categories in August 2005	13
Table no. 11 – Number of companies registered and the amount of subscribed capital, by county in August 2005	15
Table no. 12– Number of registered companies and the amount of subscribed capital by category, in August 2005	16
Diagram no. 5 – Average subscribed capital on company in August 2005	16

Explanatory Note

The Trade Register Office is set-up by Law No. 26/1990, reissued and modified by OUG No. 129/2002, became an active institution since December 1990 and is structured in two levels:

- the national level, represented by the National Trade Register Office organised under the Ministry of Justice
- the local level, represented by the 42 trade register offices attached to the law courts and co-ordinated by the National Trade Register Office

The categories of businessmen compulsory to register in the trade register are:

- natural persons tradesmen and family associations doing usually commercial acts, commercial companies, national companies, companies under state supervision, and co-operative organisations
- subsidiaries registered as commercial companies and legal persons following the legal proceedings of set-up, activity and incorporation according to the type of the legally set-up company.

Usual Terms:

- incorporation – represents the registration of the company in the trade registry awarding the quality of legal person.

- other statutory documents – represent the official registration of the changes occurred in a company's life, such as: changes in headquarters' address, increase or decrease of the issued capital, merger, liquidation, strike-off, etc.

- strike-off – represents the removal of a company from the trade registry, due to dissolution and liquidation, being also the very moment the company loses its quality of legal person. Data also include the companies under the provisions of Law No. 314/2001.

- change of certificate – represents the obligation of companies set-up before OGU No. 76/2001 republished came in force, to request the incorporation certificate and fiscal registration certificate to be replaced with the new registration certificate containing the given unique registration code.

The ratio of these changes is being calculated as a proportion between the effective number of changes and the number of active companies due to operate the change.

- active company from the legal point of view – a company registered in the trade register and which is not affected by any of the situations leading to the temporary or permanently loss of this status (e.g. dissolution, liquidation, strike-off)

- operations represent all the records in the trade registry including incorporations, other statutory documents and strike-off of companies, irrespective of the object of activity, company's type and origin of the subscribed capital (local or foreign investment).

• **Terms used in tables and charts**

➤ **Number of companies:** represents, depending on the specific table, the number of companies incorporated in the related period, the number of companies being struck-off from the trade registry.

➤ **Amount of the subscribed capital:**

- **total, in local currency:** the amount of the subscribed capital resulted from totalising the amount subscribed (in cash and in kind) in local currency (ROL)

➤ **Regional development:**

North-East: Suceava, Botoşani, Neamţ, Iaşi, Bacău, Vaslui.

South-East: Vrancea, Galaţi, Buzău, Brăila, Tulcea, Constanţa.

South-Muntenia: Argeş, Dâmboviţa, Prahova, Teleorman, Giurgiu, Călăraşi, Ialomiţa.

South-West Oltenia: Gorj, Vâlcea, Dolj, Mehedinţi, Olt.

West: Arad, Caraş-Severin, Hunedoara, Timiş.

North-West: Bihor, Bistriţa, Cluj, Satu Mare, Sălaj, Maramureş.

Center: Alba, Braşov, Covasna, Harghita, Mureş, Sibiu.

Bucharest-Ilfov: Bucureşti, Ilfov.

CAEN code – The Classification of Activities in the National Economy was approved by HG No. 656/1997, modified by Order No 601 of the President of National Institute of Statistics being compatible with the international classification used in statistic reports and official documents. Activities are ranked upon homogeneity principle by sections, divisions, groups and classes.

Common abbreviations

- **PF** - Natural Persons Tradesman
- **AF** - Family association
- **SNC** - General Partnership
- **SCS** - Limited Partnership
- **SA** - Joint stock company
- **SRL** - Limited liability company
- **RA** - Company Under State Supervision
- **OC** - Co-operative organisation

Source:

The integrated IT system of the trade registry is designed by The National Trade Registry Office according to the provisions of the related legislation in force. The source of information is the computerised system of the trade registers handled by the Trade Register Offices attached to the law courts.

Table no. 1

**Operations registered in the Trade Register, by categories
during the period of December 1990 - August 2005 in total by country and counties,**

Counties	Total of registered operations		out of which :								Strike off companies	
			Registered companies		Changes in statutory documents		out of which :					
	No. %						No. %		of liquidation, dissolution		out of which :	
			No. %		No. %				*) L314/2001		No. %	
0	1	2	3	4	5	6	7	8	9	10	11	12
Total ROMÂNIA	5937654	100,0	1378614	100,0	4272030	100,0	10007	100,0	165855	100,0	287010	100,0
ALBA	81420	1,4	21253	1,5	58393	1,4	351	3,5	3596	2,2	1774	0,6
ARAD	130455	2,2	33123	2,4	90926	2,1	437	4,4	2974	1,8	6406	2,2
ARGES	144951	2,4	35572	2,6	103687	2,4	211	2,1	4219	2,5	5692	2,0
BACAU	142866	2,4	35314	2,6	101227	2,4	1013	10,1	5280	3,2	6325	2,2
BIHOR	183023	3,1	40184	2,9	135767	3,2	308	3,1	4598	2,8	7072	2,5
BISTRITA-NASAUD	75896	1,3	17025	1,2	55068	1,3	72	0,7	1120	0,7	3803	1,3
BOTOSANI	55336	0,9	17087	1,2	35838	0,8	64	0,6	1563	0,9	2411	0,8
BRASOV	194280	3,3	42564	3,1	144945	3,4	146	1,5	4892	2,9	6771	2,4
BRAILA	77997	1,3	19531	1,4	57149	1,3	47	0,5	2540	1,5	1317	0,5
BUZAU	110295	1,9	25727	1,9	80046	1,9	177	1,8	2109	1,3	4522	1,6
CARAS-SEVERIN	79466	1,3	16905	1,2	56180	1,3	121	1,2	1922	1,2	6381	2,2
CALARASI	53252	0,9	14171	1,0	36836	0,9	76	0,8			2245	0,8
CLUJ	253603	4,3	62306	4,5	187593	4,4	249	2,5			3704	1,3
CONSTANTA	258388	4,4	58697	4,3	183588	4,3	935	9,3	10621	6,4	16103	5,6
COVASNA	56395	0,9	11791	0,9	42007	1,0	41	0,4	1175	0,7	2597	0,9
DAMBOVITA	89356	1,5	25977	1,9	56551	1,3	56	0,6	2951	1,8	6828	2,4
DOLJ	155463	2,6	36582	2,7	110544	2,6	228	2,3	5633	3,4	8337	2,9
GALATI	169100	2,8	32942	2,4	127389	3,0	132	1,3	5370	3,2	8769	3,1
GIURGIU	39735	0,7	11145	0,8	25405	0,6	49	0,5			3185	1,1
GORJ	79123	1,3	16701	1,2	58609	1,4	117	1,2	2667	1,6	3813	1,3
HARGHITA	84291	1,4	20250	1,5	62495	1,5	44	0,4			1546	0,5
HUNEDOARA	111185	1,9	28746	2,1	74310	1,7	135	1,3	2944	1,8	8129	2,8
IALOMITA	58632	1,0	13280	1,0	41862	1,0	77	0,8	1586	1,0	3490	1,2
IASI	201773	3,4	41553	3,0	152413	3,6	191	1,9	4224	2,5	7807	2,7
MARAMURES	120125	2,0	35779	2,6	79097	1,9	168	1,7	2924	1,8	5249	1,8
MEHEDINTI	63237	1,1	16103	1,2	41616	1,0	61	0,6	3085	1,9	5518	1,9
MURES	141293	2,4	34740	2,5	101367	2,4	95	0,9	2942	1,8	5186	1,8
NEAMT	117066	2,0	31144	2,3	80636	1,9	310	3,1	2435	1,5	5286	1,8
OLT	86131	1,5	20260	1,5	58902	1,4	67	0,7	2033	1,2	6969	2,4
PRAHOVA	213502	3,6	45308	3,3	160130	3,7	278	2,8	3934	2,4	8064	2,8
SALAJ	47010	0,8	12925	0,9	31509	0,7	34	0,3	683	0,4	2576	0,9
SATU MARE	95532	1,6	23027	1,7	65774	1,5	30	0,3	2934	1,8	6731	2,3
SIBIU	130252	2,2	26089	1,9	100094	2,3	62	0,6	2583	1,6	4069	1,4
SUCEAVA	149116	2,5	35522	2,6	101353	2,4	28	0,3	2387	1,4	12241	4,3
TELEORMAN	68121	1,1	15896	1,2	50581	1,2	65	0,6	1504	0,9	1644	0,6
TIMIS	231407	3,9	46563	3,4	175380	4,1	293	2,9	7273	4,4	9464	3,3
TULCEA	61442	1,0	14385	1,0	44557	1,0	148	1,5	1002	0,6	2500	0,9
VASLUI	67217	1,1	18151	1,3	44876	1,1	46	0,5	1385	0,8	4190	1,5
VALCEA	97701	1,6	23379	1,7	69483	1,6	104	1,0	1888	1,1	4839	1,7
VRANCEA	75884	1,3	17337	1,3	56578	1,3	47	0,5	1594	1,0	1969	0,7
MUN. BUCURESTI	1214703	20,5	263449	19,1	882980	20,7	2849	28,5	51406	31,0	68274	23,8
ILFOV	71634	1,2	20131	1,5	48289	1,1	45	0,4	1879	1,1	3214	1,1

*) according to the effect of Law No. 314/2001, art.1 și art. 6

*** Less than 0,01%

Table no. 1.a

**Operations registered in the Trade Register, by categories
during the period of December 1990 - August 2005, in total by country and counties,**

Counties	Total of registered operations		out of which :									
			Registered companies		Changes in statutory documents		out of which :				Strike off companies	
	of liquidation, dissolution						out of which :					
	No.	%	No.	%	No.	%	No.	%	No.	%	No.	%
0	1	2	3	4	5	6	7	8	9	10	11	12
Total ROMÂNIA	5937654	100,0	1378614	23,2	4272030	71,9	10007	0,2	165855	2,8	287010	4,8
ALBA	81420	100,0	21253	26,1	58393	71,7	351	0,4	3596	4,4	1774	2,2
ARAD	130455	100,0	33123	25,4	90926	69,7	437	0,3	2974	2,3	6406	4,9
ARGES	144951	100,0	35572	24,5	103687	71,5	211	0,1	4219	2,9	5692	3,9
BACAU	142866	100,0	35314	24,7	101227	70,9	1013	0,7	5280	3,7	6325	4,4
BIHOR	183023	100,0	40184	22,0	135767	74,2	308	0,2	4598	2,5	7072	3,9
BISTRITA-NASAUD	75896	100,0	17025	22,4	55068	72,6	72	0,1	1120	1,5	3803	5,0
BOTOSANI	55336	100,0	17087	30,9	35838	64,8	64	0,1	1563	2,8	2411	4,4
BRASOV	194280	100,0	42564	21,9	144945	74,6	146	0,1	4892	2,5	6771	3,5
BRAILA	77997	100,0	19531	25,0	57149	73,3	47	0,1	2540	3,3	1317	1,7
BUZAU	110295	100,0	25727	23,3	80046	72,6	177	0,2	2109	1,9	4522	4,1
CARAS-SEVERIN	79466	100,0	16905	21,3	56180	70,7	121	0,2	1922	2,4	6381	8,0
CALARASI	53252	100,0	14171	26,6	36836	69,2	76	0,1			2245	4,2
CLUJ	253603	100,0	62306	24,6	187593	74,0	249	0,1			3704	1,5
CONSTANTA	258388	100,0	58697	22,7	183588	71,1	935	0,4	10621	4,1	16103	6,2
COVASNA	56395	100,0	11791	20,9	42007	74,5	41	0,1	1175	2,1	2597	4,6
DAMBOVITA	89356	100,0	25977	29,1	56551	63,3	56	0,1	2951	3,3	6828	7,6
DOLJ	155463	100,0	36582	23,5	110544	71,1	228	0,1	5633	3,6	8337	5,4
GALATI	169100	100,0	32942	19,5	127389	75,3	132	0,1	5370	3,2	8769	5,2
GIURGIU	39735	100,0	11145	28,0	25405	63,9	49	0,1			3185	8,0
GORJ	79123	100,0	16701	21,1	58609	74,1	117	0,1	2667	3,4	3813	4,8
HARGHITA	84291	100,0	20250	24,0	62495	74,1	44	0,1			1546	1,8
HUNEDOARA	111185	100,0	28746	25,9	74310	66,8	135	0,1	2944	2,6	8129	7,3
IALOMITA	58632	100,0	13280	22,6	41862	71,4	77	0,1	1586	2,7	3490	6,0
IASI	201773	100,0	41553	20,6	152413	75,5	191	0,1	4224	2,1	7807	3,9
MARAMURES	120125	100,0	35779	29,8	79097	65,8	168	0,1	2924	2,4	5249	4,4
MEHEDINTI	63237	100,0	16103	25,5	41616	65,8	61	0,1	3085	4,9	5518	8,7
MURES	141293	100,0	34740	24,6	101367	71,7	95	0,1	2942	2,1	5186	3,7
NEAMT	117066	100,0	31144	26,6	80636	68,9	310	0,3	2435	2,1	5286	4,5
OLT	86131	100,0	20260	23,5	58902	68,4	67	0,1	2033	2,4	6969	8,1
PRAHOVA	213502	100,0	45308	21,2	160130	75,0	278	0,1	3934	1,8	8064	3,8
SALAJ	47010	100,0	12925	27,5	31509	67,0	34	0,1	683	1,5	2576	5,5
SATU MARE	95532	100,0	23027	24,1	65774	68,9	30	0,0	2934	3,1	6731	7,0
SIBIU	130252	100,0	26089	20,0	100094	76,8	62	0,0	2583	2,0	4069	3,1
SUCEAVA	149116	100,0	35522	23,8	101353	68,0	28	0,0	2387	1,6	12241	8,2
TELEORMAN	68121	100,0	15896	23,3	50581	74,3	65	0,1	1504	2,2	1644	2,4
TIMIS	231407	100,0	46563	20,1	175380	75,8	293	0,1	7273	3,1	9464	4,1
TULCEA	61442	100,0	14385	23,4	44557	72,5	148	0,2	1002	1,6	2500	4,1
VASLUI	67217	100,0	18151	27,0	44876	66,8	46	0,1	1385	2,1	4190	6,2
VALCEA	97701	100,0	23379	23,9	69483	71,1	104	0,1	1888	1,9	4839	5,0
VRANCEA	75884	100,0	17337	22,8	56578	74,6	47	0,1	1594	2,1	1969	2,6
MUN. BUCURESTI	1214703	100,0	263449	21,7	882980	72,7	2849	0,2	51406	4,2	68274	5,6
ILFOV	71634	100,0	20131	28,1	48289	67,4	45	0,1	1879	2,6	3214	4,5

*) according to the effect of Law No. 314/2001, art.1 și art. 6

*** Less than 0,01%

Table no.3

Number and structure of incorporations in the Trade Register, by years, during the period of December 1990 - August 2005

Period (year, month)	Registered companies		Percentage	
	No.	%	%	
0	1	2	3	
Total, 31 August 2005,	1378614	100,00		
out of which				
Year 1990	81	0,01		
Year 1991	95840	6,95		
Year 1992	137456	9,97		
Year 1993	117078	8,49		
Year 1994	137445	9,97		
Year 1995	65479	4,75		
Year 1996	62089	4,50		
Year 1997	55663	4,04		
Year 1998	63878	4,63		
Year 1999	57197	4,15		
Year 2000	57291	4,16		
Year 2001	61265	4,44		
Year 2002	84780	6,15		
Year 2003	123582	8,96		
Year 2004	144284	10,47		
Year 2003 (1.I - 31.VII),	115206	8,36	2700,0	
out of which :				
January	10148			8,8
February	16238			14,1
March	20378			17,7
April	16782			14,6
May	14305			12,4
June	14380			12,5
July	11522			10,00
August	11453			9,94

Note: Column 2 reveals the annual structure of incorporations; column 3 reveals the structure by months during the current year.

*** Less than 0,01%

Diagram no.1

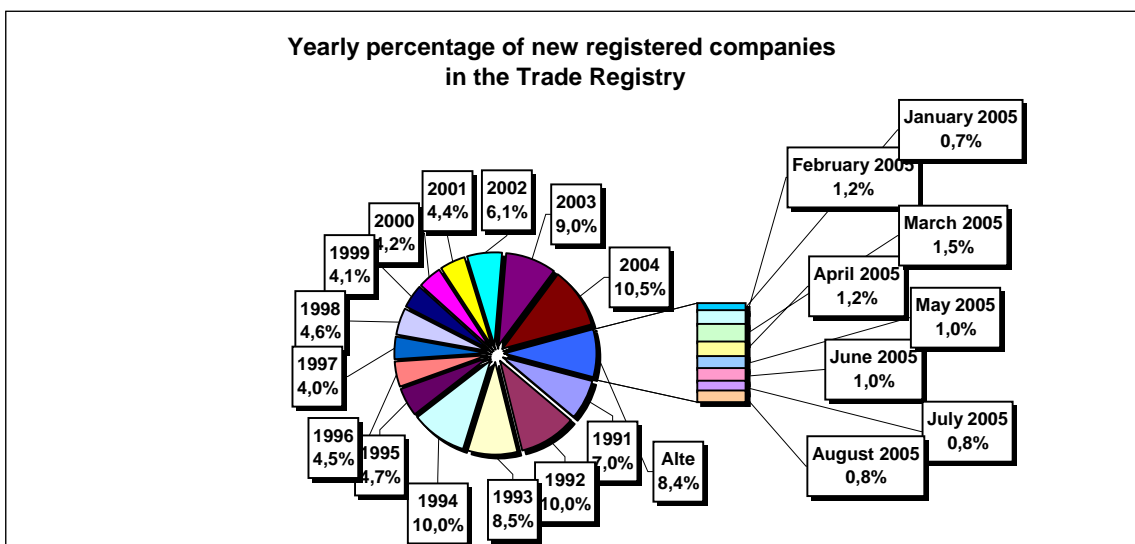


Table no. 4

The number of incorporations in the Trade Register, by counties and sources of capital, in the period December 1990 - August 2005

Counties	Total		out of which:						Ranking by: *
			Private capital			State majority capital		Mixed capital (state+private)	
			out of which:			out of which:		Companies	
			PF+AF	Companies	OC	RA	Companies	Companies	
No.	%	No.	No.	No.	No.	No.	No.		
0	1	2	3	4	5	6	7	8	9
Total ROMÂNIA	1378614	100,0	343537	1017476	5383	1320	2348	8550	X
ALBA	21253	1,5	7128	13732	141	35	47	170	24
ARAD	33124	2,4	12768	19800	157	26	40	333	15
ARGES	35572	2,6	11494	23700	168	29	29	152	11
BACAU	35314	2,6	11665	23192	158	34	42	223	13
BIHOR	40184	2,9	7734	31902	144	35	62	307	8
BISTRITA-NASAUD	17025	1,2	6041	10729	98	19	29	109	32
BOTOSANI	17087	1,2	7510	9143	122	21	172	119	31
BRASOV	42564	3,1	8285	33870	114	40	87	168	6
BRAILA	19531	1,4	4711	14488	96	28	43	165	28
BUZAU	25727	1,9	7257	18130	142	25	42	131	21
CARAS-SEVERIN	16905	1,2	5860	10708	102	33	65	137	33
CALARASI	14171	1,0	4034	9864	86	18	76	93	38
CLUJ	62306	4,5	14997	46806	150	52	40	261	2
CONSTANTA	58697	4,3	11006	46850	203	50	48	540	3
COVASNA	11791	0,9	3763	7796	67	24	32	109	41
DAMBOVITA	25977	1,9	12053	13534	134	29	75	152	20
DOLJ	36582	2,7	6681	29442	162	40	56	201	9
GALATI	32942	2,4	5987	26596	135	30	51	143	16
GIURGIU	11145	0,8	2507	8318	80	21	109	110	42
GORJ	16701	1,2	3565	12719	184	50	83	100	34
HARGHITA	20250	1,5	7433	12437	85	23	43	229	26
HUNEDOARA	28746	2,1	7519	20735	81	37	92	282	18
IALOMITA	13280	1,0	5092	7962	74	15	46	91	39
IASI	41553	3,0	11098	29844	164	33	70	344	7
MARAMURES	35779	2,6	14746	20713	121	37	39	123	10
MEHEDINTI	16103	1,2	4871	11007	82	19	26	98	35
MURES	34740	2,5	12796	21559	154	30	34	167	14
NEAMT	31144	2,3	11339	19420	161	29	30	165	17
OLT	20260	1,5	8075	11811	161	26	64	123	25
PRAHOVA	45308	3,3	13390	31354	177	50	66	271	5
SALAJ	12925	0,9	4955	7756	107	19	27	61	40
SATU MARE	23027	1,7	7124	15621	88	19	41	134	23
SIBIU	26089	1,9	6015	19661	116	31	108	158	19
SUCEAVA	35522	2,6	16979	18029	201	30	63	220	12
TELEORMAN	15896	1,2	5352	10150	152	21	41	180	36
TIMIS	46563	3,4	6712	39261	140	37	68	345	4
TULCEA	14385	1,0	4529	9518	66	18	42	212	37
VASLUI	18151	1,3	8928	8922	109	16	41	135	29
VALCEA	23379	1,7	9153	13868	168	40	37	113	22
VRANCEA	17337	1,3	5162	11916	103	16	27	113	30
MUN. BUCURESTI	263448	19,1	14782	247207	138	115	103	1103	1
ILFOV	20131	1,5	2441	17406	92	20	12	160	27

*) The total number of incorporations (col 1)

*** Less than 0,01%

Table no. 5

**The number of incorporations in the Trade Register,
by counties and categories, during the period of**

County	Total		out of which:						
			PF+AF	companies: 1028374				RA	OC
	SNC	SCS		SRL	SA				
	No.	%	No.	No.	No.	No.	No.	No.	
0	1	2	3	4	5	6	7	8	9
Total ROMÂNIA	1378614	100,0	343537	32631	1552	963409	30776	1320	5383
ALBA	21253	1,5	7128	888	11	12516	534	35	141
ARAD	33123	2,4	12768	51	8	19470	642	26	157
ARGES	35572	2,6	11494	107	14	22974	786	29	168
BACAU	35314	2,6	11665	1299	4	21459	694	34	158
BIHOR	40184	2,9	7734	125	47	31230	869	35	144
BISTRITA-NASAUD	17025	1,2	6041	146	21	10300	400	19	98
BOTOSANI	17087	1,2	7510	468	1	8530	435	21	122
BRASOV	42564	3,1	8285	239	19	33062	805	40	114
BRAILA	19531	1,4	4711	376	12	13811	497	28	96
BUZAU	25727	1,9	7257	3747	46	13966	544	25	142
CARAS-SEVERIN	16905	1,2	5860	116	8	10338	448	33	102
CALARASI	14171	1,0	4034	609	3	9082	339	18	86
CLUJ	62306	4,5	14997	2110	18	43797	1182	52	150
CONSTANTA	58697	4,3	11006	311	23	45678	1426	50	203
COVASNA	11791	0,9	3763	148	4	7498	287	24	67
DAMBOVITA	25977	1,9	12053	60	8	13219	474	29	134
DOLJ	36582	2,7	6681	1560	8	27291	840	40	162
GALATI	32942	2,4	5987	1574	6	24410	800	30	135
GIURGIU	11145	0,8	2507	35	8	8182	312	21	80
GORJ	16701	1,2	3565	28	1	12406	467	50	184
HARGHITA	20250	1,5	7433	62	6	12170	471	23	85
HUNEDOARA	28746	2,1	7519	1166	98	19198	647	37	81
IALOMITA	13280	1,0	5092	266	11	7495	327	15	74
IASI	41553	3,0	11098	506	111	28673	966	33	164
MARAMURES	35779	2,6	14746	1926	23	18354	571	37	121
MEHEDINTI	16103	1,2	4871	427	3	10386	315	19	82
MURES	34740	2,5	12796	37	34	21060	629	30	154
NEAMT	31144	2,3	11339	3293	30	15647	645	29	161
OLT	20260	1,5	8075	1611	1	9912	474	26	161
PRAHOVA	45308	3,3	13390	3121	12	27713	845	50	177
SALAJ	12925	0,9	4955	600	4	6966	274	19	107
SATU MARE	23027	1,7	7124	283	5	15059	449	19	88
SIBIU	26089	1,9	6015	775	48	18484	620	31	116
SUCEAVA	35522	2,6	16979	438	8	17306	560	30	201
TELEORMAN	15896	1,2	5352	272	399	9301	399	21	152
TIMIS	46563	3,4	6712	602	26	37848	1198	37	140
TULCEA	14385	1,0	4529	1363	112	7835	462	18	66
VASLUI	18151	1,3	8928	90	11	8605	392	16	109
VALCEA	23379	1,7	9153	363	6	13189	460	40	168
VRANCEA	17337	1,3	5162	356	9	11258	433	16	103
MUN. BUCURESTI	263449	19,1	14782	1028	295	240783	6307	115	138
ILFOV	20131	1,5	2441	49	30	16948	551	20	92

Table no. 6

**The number of incorporations in the Trade Register, by field of activity*
during the period of December 1990 - August 2005**

CAEN segment	Field of activity	Total		out of which:						
				PF+AF	companies: 1028374				RA	OC
					SNC	SCS	SRL	SA		
					No.	No.	No.	No.		
0	1	2	3	4	5	6	7	8	9	10
	Total ROMÂNIA	1378614	100,0	343537	32631	1552	963409	30776	1320	5383
1	Agriculture, hunting and related service activities	53222	3,9	9869	2023	44	37353	3765	51	117
2	Forestry, logging and related service activities	7355	0,5	901	152	3	5995	218	78	8
5	Fishing, fish farming and related service activities	2231	0,2	1167	17	3	991	53		
10	Mining of coal and lignite; extraction of peat	98	0,0	2			64	28	4	
11	Extraction of crude petroleum and natural gas; service activities incidental to oil and gas extraction, excluding surveying	307	0,0	3	1		136	121	46	
12	Mining of uranium and thorium ores	133	0,0	32			95	6		
13	Mining of metal ores	520	0,0	163			294	55	8	
14	Other mining and quarrying	1348	0,1	104	9	1	1064	167	2	1
15	Manufacture of food products and beverages	70561	5,1	13025	3260	149	52047	1827	5	248
16	Manufacture of tobacco products	284	0,0	47			205	31	1	
17	Manufacture of textiles	11156	0,8	2186	556	16	7849	405		144
18	Manufacture of wearing apparel; dressing and dyeing of fur	19608	1,4	4333	875	38	13701	355	1	305
19	Tanning and dressing of leather; manufacture of luggage, handbags, saddlery, harness and footwear	4936	0,4	845	112	6	3799	122	1	51
20	Manufacture of wood and of products of wood and cork, except furniture; manufacture of articles of straw and plaiting materials	22835	1,7	7790	575	29	13897	493	9	42
21	Manufacture of pulp, paper and paper products	1636	0,1	106	21	1	1398	97		13
22	Publishing, printing and reproduction of recorded media	10806	0,8	875	317	21	9172	397	14	10
23	Manufacture of coke, refined petroleum products and nuclear fuel	248	0,0	24			188	34	2	
24	Manufacture of chemicals and chemical products	3502	0,3	113	89	1	2915	372	6	6
25	Manufacture of rubber and plastic products	5573	0,4	526	313	7	4446	256		24
26	Manufacture of other non-metallic mineral products	8114	0,6	2422	212	6	5078	378	5	13
27	Manufacture of basic metals	2346	0,2	164	39	3	1924	206	3	7
28	Manufacture of fabricated metal products, except machinery and equipment	14733	1,1	3240	361	23	10321	715	11	62
29	Manufacture of machinery and equipment n.e.c.	3534	0,3	93	44	7	2949	417	19	5
30	Manufacture of office machinery and computers	1716	0,1	14	25	4	1593	80		
31	Manufacture of electrical machinery and apparatus n.e.c.	1786	0,1	102	44	6	1485	143		6
32	Manufacture of radio, television and communication equipment and apparatus	809	0,1	50	14	4	667	73		1
33	Manufacture of medical, precision and optical instruments, watches and clocks	2239	0,2	536	17	2	1583	97		4
34	Manufacture of motor vehicles, trailers and semi-trailers	841	0,1	29	31	3	655	121		2
35	Manufacture of other transport equipment	1711	0,1	258	86	7	1164	121	73	2
36	Manufacture of furniture; manufacturing n.e.c.	13825	1,0	3857	284	16	9178	327	5	158
37	Recycling	4330	0,3	384	51	5	3720	169		1
40	Electricity, gas, steam and hot water supply	2777	0,2	833	3	1	1358	494	88	
41	Collection, purification and distribution of water	3502	0,3	1614	2		1631	182	73	
45	Construction	71573	5,2	18937	611	42	49483	2370	53	77

*)Field of activity declared when registered, according to CAEN classification

Table no. 7

**Operations carried on with the Trade Registers,
by counties and categories,
in August 2005**

County	Total of operations carried on		out of which:							
			New incorporations		Changes in statutory documents		out of which: of liquidation, dissolution		Strike off companies	
	No.	%	No.	%	No.	%	No.	%	No.	%
0	1	2	3	4	5	6	7	8	9	10
Total ROMÂNIA	82416	100,0	11453	13,9	59748	72,5	253	0,3	11215	13,6
ALBA	1052	100,0	231	22,0	782	74,3	4	0,4	39	3,7
ARAD	1934	100,0	308	15,9	890	46,0	10	0,5	736	38,1
ARGES	1208	100,0	307	25,4	861	71,3	3	0,2	40	3,3
BACAU	1597	100,0	300	18,8	971	60,8	9	0,6	326	20,4
BIHOR	1505	100,0	357	23,7	1111	73,8	5	0,3	37	2,5
BISTRITA-NASAUD	703	100,0	137	19,5	490	69,7			76	10,8
BOTOSANI	410	100,0	135	32,9	265	64,6			10	2,4
BRASOV	1945	100,0	362	18,6	1540	79,2	3	0,2	43	2,2
BRAILA	578	100,0	135	23,4	428	74,0	1	0,2	15	2,6
BUZAU	928	100,0	162	17,5	747	80,5	4	0,4	19	2,0
CARAS-SEVERIN	623	100,0	133	21,3	460	73,8	13	2,1	30	4,8
CALARASI	497	100,0	93	18,7	375	75,5	8	1,6	29	5,8
CLUJ	2443	100,0	565	23,1	1815	74,3	27	1,1	63	2,6
CONSTANTA	3694	100,0	426	11,5	2939	79,6	14	0,4	329	8,9
COVASNA	394	100,0	93	23,6	288	73,1	7	1,8	13	3,3
DAMBOVITA	872	100,0	194	22,2	527	60,4	1	0,1	151	17,3
DOLJ	1687	100,0	335	19,9	1317	78,1	7	0,4	35	2,1
GALATI	1632	100,0	269	16,5	1335	81,8	4	0,2	28	1,7
GIURGIU	258	100,0	95	36,8	156	60,5			7	2,7
GORJ	686	100,0	106	15,5	573	83,5	3	0,4	7	1,0
HARGHITA	1169	100,0	168	14,4	955	81,7	1	0,1	46	3,9
HUNEDOARA	907	100,0	201	22,2	695	76,6	8	0,9	11	1,2
IALOMITA	824	100,0	94	11,4	704	85,4	3	0,4	26	3,2
IASI	1725	100,0	432	25,0	1276	74,0	10	0,6	17	1,0
MARAMURES	781	100,0	317	40,6	405	51,9	4	0,5	59	7,6
MEHEDINTI	382	100,0	115	30,1	254	66,5	1	0,3	13	3,4
MURES	3301	100,0	320	9,7	2896	87,7	22	0,7	85	2,6
NEAMT	1501	100,0	298	19,9	1156	77,0	3	0,2	47	3,1
OLT	610	100,0	140	23,0	440	72,1	2	0,3	30	4,9
PRAHOVA	1964	100,0	369	18,8	1513	77,0	12	0,6	82	4,2
SALAJ	493	100,0	152	30,8	320	64,9			21	4,3
SATU MARE	1056	100,0	221	20,9	819	77,6	3	0,3	16	1,5
SIBIU	2405	100,0	261	10,9	2113	87,9	3	0,1	31	1,3
SUCEAVA	15102	100,0	286	1,9	7798	51,6	3	0,0	7018	46,5
TELEORMAN	611	100,0	131	21,4	459	75,1	1	0,2	21	3,4
TIMIS	1689	100,0	445	26,3	1236	73,2	3	0,2	8	0,5
TULCEA	558	100,0	149	26,7	380	68,1			29	5,2
VASLUI	486	100,0	165	34,0	270	55,6	2	0,4	51	10,5
VALCEA	2886	100,0	171	5,9	1739	60,3	1	0,0	976	33,8
VRANCEA	1742	100,0	148	8,5	1181	67,8	2	0,1	413	23,7
MUN. BUCURESTI	16513	100,0	1893	11,5	14463	87,6	41	0,2	157	1,0
ILFOV	1065	100,0	234	22,0	806	75,7	5	0,5	25	2,3

*) by effect of implementation of Law no. 314/2001, art.1 and art. 6

*** Less than 0,01%

Table no. 8

**The number of incorporations in the Trade Register,
by counties and sources of capital,
in August 2005**

County	Total		out of which:					Rnking by: *	
			Private capital			State majority capital			Mixed capital (state+private)
			out of which:			out of which:			
			PF+AF	Companies	OC	RA	Companies		Companies
No.	%	No.	No.	No.	No.	No.	No.		
0	1	2	3	4	5	6	7	8	9
Total ROMÂNIA	11453	100,0	4356	7083		4	1	9	X
ALBA	231	2,0	118	113					20
ARAD	308	2,7	134	173				1	12
ARGES	307	2,7	126	181					13
BACAU	300	2,6	111	189					14
BIHOR	357	3,1	168	188		1			8
BISTRITA-NASAUD	137	1,2	67	70					32
BOTOSANI	135	1,2	83	52					33
BRASOV	362	3,2	119	243					7
BRAILA	135	1,2	49	86					34
BUZAU	162	1,4	79	83					27
CARAS-SEVERIN	133	1,2	61	72					35
CALARASI	93	0,8	41	52					41
CLUJ	565	4,9	198	367					2
CONSTANTA	426	3,7	99	327					5
COVASNA	93	0,8	42	51					42
DAMBOVITA	194	1,7	87	107					23
DOLJ	335	2,9	159	175		1			9
GALATI	269	2,3	95	174					17
GIURGIU	95	0,8	44	51					39
GORJ	106	0,9	45	61					38
HARGHITA	168	1,5	101	66			1		25
HUNEDOARA	201	1,8	65	136					22
IALOMITA	94	0,8	25	69					40
IASI	432	3,8	176	256					4
MARAMURES	317	2,8	144	171		2			11
MEHEDINTI	115	1,0	60	55					37
MURES	320	2,8	151	169					10
NEAMT	298	2,6	148	150					15
OLT	140	1,2	64	76					31
PRAHOVA	369	3,2	150	211				8	6
SALAJ	152	1,3	100	52					28
SATU MARE	221	1,9	108	113					21
SIBIU	261	2,3	127	134					18
SUCEAVA	286	2,5	162	124					16
TELEORMAN	131	1,1	67	64					36
TIMIS	445	3,9	169	276					3
TULCEA	149	1,3	91	58					29
VASLUI	165	1,4	95	70					26
VALCEA	171	1,5	89	82					24
VRANCEA	148	1,3	68	80					30
MUN. BUCURESTI	1893	16,5	224	1669					1
ILFOV	234	2,0	47	187					19

*) The total number of incorporations (col 1)

*** Less than 0,01%

Table no.9

**The number of incorporations in the Trade Register,
by counties and category
in August 2005**

County	Total		out of which:					RA	OC
			PF+AF	companies: 7093					
	SNC	SCS		SRL	SA	No.	No.		
	No.	%	No.	No.	No.			No.	No.
0	1	2	3	4	5	6	7	8	9
Total ROMÂNIA	11453	100,0	4356		1	7026	66	4	
ALBA	231	2,0	118			111	2		
ARAD	308	2,7	134			173	1		
ARGES	307	2,7	126		1	179	1		
BACAU	300	2,6	111			189			
BIHOR	357	3,1	168			188		1	
BISTRITA-NASAUD	137	1,2	67			70			
BOTOSANI	135	1,2	83			52			
BRASOV	362	3,2	119			239	4		
BRAILA	135	1,2	49			85	1		
BUZAU	162	1,4	79			83			
CARAS-SEVERIN	133	1,2	61			71	1		
CALARASI	93	0,8	41			52			
CLUJ	565	4,9	198			365	2		
CONSTANTA	426	3,7	99			323	4		
COVASNA	93	0,8	42			51			
DAMBOVITA	194	1,7	87			104	3		
DOLJ	335	2,9	159			174	1	1	
GALATI	269	2,3	95			174			
GIURGIU	95	0,8	44			50	1		
GORJ	106	0,9	45			61			
HARGHITA	168	1,5	101			65	2		
HUNEDOARA	201	1,8	65			136			
IALOMITA	94	0,8	25			69			
IASI	432	3,8	176			256			
MARAMURES	317	2,8	144			171		2	
MEHEDINTI	115	1,0	60			55			
MURES	320	2,8	151			169			
NEAMT	298	2,6	148			149	1		
OLT	140	1,2	64			76			
PRAHOVA	369	3,2	150			211	8		
SALAJ	152	1,3	100			52			
SATU MARE	221	1,9	108			112	1		
SIBIU	261	2,3	127			134			
SUCEAVA	286	2,5	162			122	2		
TELEORMAN	131	1,1	67			64			
TIMIS	445	3,9	169			274	2		
TULCEA	149	1,3	91			57	1		
VASLUI	165	1,4	95			70			
VALCEA	171	1,5	89			81	1		
VRANCEA	148	1,3	68			80			
MUN. BUCURESTI	1893	16,5	224			1646	23		
ILFOV	234	2,0	47			183	4		

Table no. 10

**The number of incorporations in the Trade Register, by field of activity*
and categories in August 2005**

CAEN segment	Field of activity	Total		out of which:							
				PF+AF No.	companies: 7093				RA No.	OC No.	
					SNC	SCS	SRL	SA			
					No.	No.	No.	No.			
0	1	2	3	4	5	6	7	8	9	10	
	Total ROMÂNIA	11453	100,0	4356			1	7026	66	4	
1	Agriculture, hunting and related service activities	448	3,9	256				191		1	
2	Forestry, logging and related service activities	50	0,4	18				29		3	
5	Fishing, fish farming and related service activities	63	0,6	49				14			
10	Mining of coal and lignite; extraction of peat										
11	Extraction of crude petroleum and natural gas; service activities incidental to oil and gas extraction, excluding surveying	1	0,0					1			
12	Mining of uranium and thorium ores										
13	Mining of metal ores										
14	Other mining and quarrying	12	0,1					12			
15	Manufacture of food products and beverages	272	2,4	161				108		3	
16	Manufacture of tobacco products										
17	Manufacture of textiles	39	0,3	14				25			
18	Manufacture of wearing apparel; dressing and dyeing of fur	82	0,7	31				51			
19	Tanning and dressing of leather; manufacture of luggage, handbags, saddlery, harness and footwear	36	0,3	12				24			
20	Manufacture of wood and of products of wood and cork, except furniture; manufacture of articles of straw and plaiting materials	202	1,8	142				60			
21	Manufacture of pulp, paper and paper products	11	0,1					11			
22	Publishing, printing and reproduction of recorded media	60	0,5	7				52		1	
23	Manufacture of coke, refined petroleum products and nuclear fuel	5	0,0	1				4			
24	Manufacture of chemicals and chemical products	10	0,1					10			
25	Manufacture of rubber and plastic products	32	0,3	3				29			
26	Manufacture of other non-metallic mineral products	96	0,8	51				45			
27	Manufacture of basic metals	3	0,0					3			
28	Manufacture of fabricated metal products, except machinery and equipment	145	1,3	62				83			
29	Manufacture of machinery and equipment n.e.c.	16	0,1	2				14			
30	Manufacture of office machinery and computers	3	0,0				1	2			
31	Manufacture of electrical machinery and apparatus n.e.c.	6	0,1					6			
32	Manufacture of radio, television and communication equipment and apparatus	5	0,0	1				4			
33	Manufacture of medical, precision and optical instruments, watches and clocks	18	0,2	6				12			
34	Manufacture of motor vehicles, trailers and semi- trailers	3	0,0					3			
35	Manufacture of other transport equipment	16	0,1	1				13		2	
36	Manufacture of furniture; manufacturing n.e.c.	111	1,0	48				61		2	
37	Recycling	33	0,3					33			
40	Electricity, gas, steam and hot water supply	3	0,0					3			
41	Collection, purification and distribution of water	10	0,1					3		7	
45	Construction	1269	11,1	533				732		4	

*)Field of activity declared when registered, according to CAEN classification

Table no. 10
(continuance)

**The number of incorporations in the Trade Register, by field of activity*
and categories in August 2005**

CAEN segment	Field of activity	Total		out of which:						
				PF+AF	companies: 7093				RA	OC
		SNC	SCS		SRL	SA				
		No.	%	No.	No.	No.	No.	No.	No.	
0	1	2	3	4	5	6	7	8	9	10
	Total ROMÂNIA	11453	100,0	4356		1	7026	66	4	
50	Sale, maintenance and repair of motor vehicles and motorcycles; retail sale of automotive fuel	310	2,7	106			202	2		
51	Wholesale trade and commission trade, except of motor vehicles and motorcycles	1117	9,8	267			844	6		
52	Retail trade, except of motor vehicles and motorcycles; repair of personal and household goods	2968	25,9	1510			1456	2		
55	Hotels and restaurants	481	4,2	134			346	1		
60	Land transport; transport via pipelines	699	6,1	301			396	2		
61	Water transport	9	0,1	6			3			
62	Air transport	1	0,0				1			
63	Supporting and auxiliary transport activities; activities of travel agencies	88	0,8	14			73	1		
64	Post and telecommunications	88	0,8	19			68	1		
65	Financial intermediation, except insurance and pension funding	40	0,3				29	11		
66	Insurance and pension funding, except compulsory social security									
67	Activities auxiliary to financial intermediation	56	0,5	1			53	2		
70	Real estate activities	315	2,8				309	6		
71	Renting of machinery and equipment without operator and of personal and household goods	43	0,4	10			33			
72	Computer and related activities	290	2,5	81			208	1		
73	Research and development	10	0,1				10			
74	Other business activities	1237	10,8	263			967	7		
75	Public administration and defence; compulsory social security									
80	Education	42	0,4	2			40			
85	Health and social work	120	1,0	3			117			
90	Sewage and refuse disposal, sanitation and similar activities	15	0,1	2			11	2		
91	Activities of membership organizations n.e.c.	2	0,0				2			
92	Recreational, cultural and sporting activities	178	1,6	80			95	3		
93	Other service activities	269	2,3	148			121			
95	Activities of households as employers of domestic staff	15	0,1	11			4			
96	Extra-territorial organizations and bodies									

*)Field of activity declared when registered, according to CAEN classification

Table no. 11

**Number of companies registered and the amount
of subscribed capital, by county
in August 2005**

County	Total registered companies		Subscribed capital		Average subscribed capital on company
	No.	%	mil. ROL	%	mil. ROL
0	1	2	3	4	5
Total ROMÂNIA	7093	100,0	173868,3	100,0	24,6
ALBA	113	1,6	101,1	0,1	0,9
ARAD	174	2,5	214,9	0,1	1,2
ARGES	181	2,6	441,5	0,3	2,4
BACAU	189	2,7	102,3	0,1	0,5
BIHOR	188	2,7	195,4	0,1	1,0
BISTRITA-NASAUD	70	1,0	51,6	0,0	0,7
BOTOSANI	52	0,7	69,3	0,0	1,3
BRASOV	243	3,4	12137,7	7,0	49,9
BRAILA	86	1,2	27,7	0,0	0,3
BUZAU	83	1,2	138,5	0,1	1,7
CARAS-SEVERIN	72	1,0	77,1	0,0	1,1
CALARASI	52	0,7	184,5	0,1	3,5
CLUJ	367	5,2	1469,6	0,8	4,0
CONSTANTA	327	4,6	2185,0	1,3	6,7
COVASNA	51	0,7	199,6	0,1	3,9
DAMBOVITA	107	1,5	3413,3	2,0	32,2
DOLJ	175	2,5	3332,1	1,9	19,0
GALATI	174	2,5	86,2	0,0	0,5
GIURGIU	51	0,7	31,9	0,0	0,6
GORJ	61	0,9	15,3	***	0,3
HARGHITA	67	0,9	181,1	0,1	2,7
HUNEDOARA	136	1,9	245,0	0,1	1,8
IALOMITA	69	1,0	17,8	0,0	0,3
IASI	256	3,6	999,7	0,6	3,9
MARAMURES	171	2,4	215,9	0,1	1,3
MEHEDINTI	55	0,8	59,4	0,0	1,1
MURES	169	2,4	74,2	0,0	0,4
NEAMT	150	2,1	115,2	0,1	0,8
OLT	76	1,1	40,8	0,0	0,5
PRAHOVA	219	3,1	38804,7	22,3	183,0
SALAJ	52	0,7	18,0	0,0	0,3
SATU MARE	113	1,6	296,7	0,2	2,6
SIBIU	134	1,9	172,1	0,1	1,3
SUCEAVA	124	1,7	128,4	0,1	1,0
TELEORMAN	64	0,9	16,9	***	0,3
TIMIS	276	3,9	937,0	0,5	3,4
TULCEA	58	0,8	373,4	0,2	6,6
VASLUI	70	1,0	69,7	0,0	1,0
VALCEA	82	1,2	117,8	0,1	1,5
VRANCEA	80	1,1	103,0	0,1	1,3
MUN. BUCURESTI	1669	23,5	95033,5	54,7	57,2
ILFOV	187	2,6	11373,3	6,5	61,1

Note: The average does not include filials because according to the Law no.31/1990 they are not juridical persons

*** Less than 0,01%

Table no. 12

**Number of registered companies and the amount
of subscribed capital by category,
in August 2005**

Company type	Total registered companies		Subscribed capital		Average subscribed capital on company
	No.	%	mil. ROL	%	mil. ROL
0	1	2	3	4	5
Total ROMÂNIA	7093	100,0	173868,3	100,0	24,6
SNC		***			
SCS	1	0,0	0,2	***	0,2
SA	66	0,9	125981,1	72,5	2999,5
SRL	7026	99,1	47887,0	27,5	6,8
SCA		***		***	-

Note: The average does not include filials because according to the Law no.31/1990 they are not juridical persons

*** Less than 0,01%

Diagram no.5

