



MINISTRY OF JUSTICE

THE NATIONAL TRADE REGISTER OFFICE

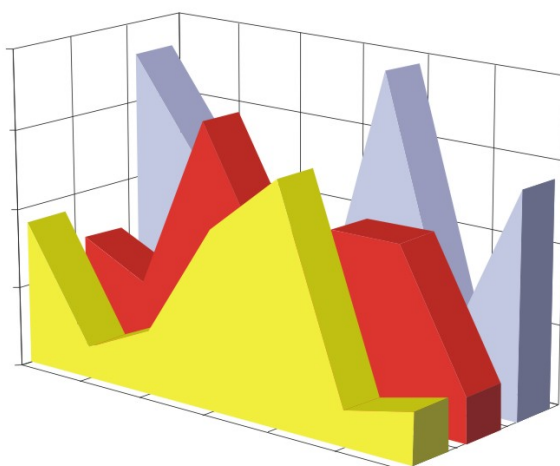
Bucharest, 2, Octavian Goga Blvd., sector 3; Phone: +40 - 21 - 320.60.13; Fax: +40 - 21 - 320.58.29; Website: [www.onrc.ro](http://www.onrc.ro); E-mail: [onrc@onrc.ro](mailto:onrc@onrc.ro)

# PROCEEDINGS IN THE CENTRAL TRADE REGISTER

## STATISTICAL SYNTHESIS

OF

**RECORDS IN THE CENTRAL TRADE REGISTER**  
**- the 31<sup>th</sup> of July 2005 - provisional data -**



- ISSUE No. 164 -

**MINISTRY OF JUSTICE  
THE NATIONAL TRADE REGISTER OFFICE**

---

- Operations of incorporation of companies, changes in statutory documents and strike-off of companies are based on Law No.26/1990 reissued, Law No.31/1990, reissued, OUG No.76/2001, reissued and Methodology Norms No. P/608/1998.
  
- This paper presents the trend in operations registered in The Trade Register Office attached to the law court of Bucharest and in the Trade Register Offices attached to the law court in each county of Romania.
  
- Information recorded in the Central Trade Register concern operations compulsory by law to be registered in the trade registers within the 42 trade register offices attached to the law courts.

*• No part of the content of this publication, in original or in any modified format, may be reproduced, stored in a retrieval system, or transmitted, in any form or by any means, without the prior permission in writing of The Ministry of Justice – The National Trade Register Office.*

*• The content of this publication may be referred to in articles, studies, books, as supporting or explanatory data under the condition only, the source of the information to be clearly and precisely specified.*

# Contents

	Page
<b>1 Explanatory Note</b>	<b>1</b>
<b>2.1 Data for December 1990 – July 2005</b>	<b>3</b>
Table no.1 – Operations registered in the Trade Register, by categories during the period of December 1990 – July 2005, in total by country and counties, rate of categories of operations in total operations country	3
Table no.1.a – Operations registered in the Trade Register, by categories during the period of December 1990 – July 2005, in total by country and counties, counties' rate in total country	4
Table no. 3 – Number and structure of incorporations in the Trade Register, by years, during the period of December 1990- July 2005	5
Table no.4 – The number of incorporations in the Trade Register, by counties and sources of capital, in the period December 1990 - July 2005	6
Table no. 5 – The number of incorporations in the Trade Register, by counties and categories, during the period of December 1990 – July 2005	7
Table no. 6 – The number of incorporations in the Trade Register, by field of activity and categories, during the period of December 1990 - July 2005	8
<b>2.2 Data for July 2005</b>	<b>10</b>
Table no. 7 – Operations carried on with the Trade Registers, by counties and categories, in July 2005	10
Table no. 8 – The number of incorporations in the Trade Register, by counties and sources of capital, in July 2005	11
Table no. 9 – The number of incorporations in the Trade Register, by counties and category in July 2005	12
Table no. 10 –The number of incorporations in the Trade Register, by field of activity and categories in July 2005	13
Table no. 11 – Number of companies registered and the amount of subscribed capital, by county in July 2005	15
Table no. 12– Number of registered companies and the amount of subscribed capital by category, in July 2005	16
Diagram no. 5 – Average subscribed capital on company in July 2005	16

## Explanatory Note

The Trade Register Office is set-up by Law No. 26/1990, reissued and modified by OUG No. 129/2002, became an active institution since December 1990 and is structured in two levels:

- the national level, represented by the National Trade Register Office organised under the Ministry of Justice
- the local level, represented by the 42 trade register offices attached to the law courts and co-ordinated by the National Trade Register Office

The categories of businessmen compulsory to register in the trade register are:

- natural persons tradesmen and family associations doing usually commercial acts, commercial companies, national companies, companies under state supervision, and co-operative organisations
- subsidiaries registered as commercial companies and legal persons following the legal proceedings of set-up, activity and incorporation according to the type of the legally set-up company.

### Usual Terms:

• incorporation – represents the registration of the company in the trade registry awarding the quality of legal person.

• other statutory documents – represent the official registration of the changes occurred in a company's life, such as: changes in headquarters' address, increase or decrease of the issued capital, merger, liquidation, strike-off, etc.

• strike-off – represents the removal of a company from the trade registry, due to dissolution and liquidation, being also the very moment the company loses its quality of legal person. Data also include the companies under the provisions of Law No. 314/2001.

• change of certificate – represents the obligation of companies set-up before OGU No. 76/2001 republished came in force, to request the incorporation certificate and fiscal registration certificate to be replaced with the new registration certificate containing the given unique registration code.

The ratio of these changes is being calculated as a proportion between the effective number of changes and the number of active companies due to operate the change.

• active company from the legal point of view – a company registered in the trade register and which is not affected by any of the situations leading to the temporary or permanent loss of this status (e.g. dissolution, liquidation, strike-off)

• operations represent all the records in the trade registry including incorporations, other statutory documents and strike-off of companies, irrespective of the object of activity, company's type and origin of the subscribed capital (local or foreign investment).

- **Terms used in tables and charts**

- **Number of companies:** represents, depending on the specific table, the number of companies incorporated in the related period, the number of companies being struck-off from the trade registry.

- **Amount of the subscribed capital:**

- **total, in local currency:** the amount of the subscribed capital resulted from totalising the amount subscribed (in cash and in kind) in local currency (ROL)

- **Regional development:**

<i>North-East:</i>	Suceava, Botoșani, Neamț, Iași, Bacău, Vaslui.
<i>South-East:</i>	Vrancea, Galați, Buzău, Brăila, Tulcea, Constanța.
<i>South-Muntenia:</i>	Argeș, Dâmbovița, Prahova, Teleorman, Giurgiu, Călărași, Ialomița.
<i>South-West Oltenia:</i>	Gorj, Vâlcea, Dolj, Mehedinți, Olt.
<i>West:</i>	Arad, Caraș-Severin, Hunedoara, Timiș.
<i>North-West:</i>	Bihor, Bistrița, Cluj, Satu Mare, Sălaj, Maramureș.
<i>Center:</i>	Alba, Brașov, Covasna, Harghita, Mureș, Sibiu.
<i>Bucharest-Ilfov:</i>	București, Ilfov.

CAEN code – The Classification of Activities in the National Economy was approved by HG No. 656/1997, modified by Order No 601 of the President of National Institute of Statistics being compatible with the international classification used in statistic reports and official documents. Activities are ranked upon homogeneity principle by sections, divisions, groups and classes.

Common abbreviations

- **PF** - Natural Persons Tradesman
- **AF** - Family association
- **SNC** - General Partnership
- **SCS** - Limited Partnership
- **SA** - Joint stock company
- **SRL** - Limited liability company
- **RA** - Company Under State Supervision
- **OC** - Co-operative organisation

Source:

The integrated IT system of the trade registry is designed by The National Trade Registry Office according to the provisions of the related legislation in force. The source of information is the computerised system of the trade registers handled by the Trade Register Offices attached to the law courts.

Table no. 1

**Operations prosecuted in the Trade Registry  
between December 1990 and July 2005  
- total Romania and counties -**

Counties	Total operations prosecuted		out of which :							
			Registered companies		Mentions		out of which : of liquidation, dissolution		Erased companies	
	No.	%	No.	%	No.	%	No.	%	No.	%
0	1	2	3	4	5	6	7	8	11	12
<b>Total ROMANIA</b>	<b>5855238</b>	<b>100,00</b>	<b>1367161</b>	<b>23,35</b>	<b>4212282</b>	<b>71,94</b>	<b>9862</b>	<b>0,17</b>	<b>275795</b>	<b>4,71</b>
ALBA	80368	1,37	21022	26,16	57611	71,68	348	0,43	1735	2,16
ARAD	128521	2,19	32815	25,53	90036	70,06	430	0,33	5670	4,41
ARGES	143743	2,45	35265	24,53	102826	71,53	209	0,15	5652	3,93
BACAU	141269	2,41	35014	24,79	100256	70,97	1005	0,71	5999	4,25
BIHOR	181518	3,10	39827	21,94	134656	74,18	310	0,17	7035	3,88
BISTRITA-NASAUD	75193	1,28	16888	22,46	54578	72,58	74	0,10	3727	4,96
BOTOSANI	54926	0,94	16952	30,86	35573	64,77	64	0,12	2401	4,37
BRASOV	192335	3,28	42202	21,94	143405	74,56	144	0,07	6728	3,50
BRAILA	77419	1,32	19396	25,05	56721	73,26	47	0,06	1302	1,68
BUZAU	109367	1,87	25565	23,38	79299	72,51	173	0,16	4503	4,12
CARAS-SEVERIN	78843	1,35	16772	21,27	55720	70,67	108	0,14	6351	8,06
CALARASI	52755	0,90	14078	26,69	36461	69,11	68	0,13	2216	4,20
CLUJ	251160	4,29	61741	24,58	185778	73,97	226	0,09	3641	1,45
CONSTANTA	254694	4,35	58271	22,88	180649	70,93	932	0,37	15774	6,19
COVASNA	56001	0,96	11698	20,89	41719	74,50	38	0,07	2584	4,61
DAMBOVITA	88484	1,51	25783	29,14	56024	63,32	55	0,06	6677	7,55
DOLJ	153776	2,63	36247	23,57	109227	71,03	223	0,15	8302	5,40
GALATI	167468	2,86	32673	19,51	126054	75,27	129	0,08	8741	5,22
GIURGIU	39477	0,67	11050	27,99	25249	63,96	50	0,13	3178	8,05
GORJ	78437	1,34	16595	21,16	58036	73,99	116	0,15	3806	4,85
HARGHITA	83122	1,42	20082	24,16	61540	74,04	43	0,05	1500	1,80
HUNEDOARA	110278	1,88	28545	25,88	73615	66,75	129	0,12	8118	7,36
IALOMITA	57808	0,99	13186	22,81	41158	71,20	75	0,13	3464	5,99
IASI	200048	3,42	41121	20,56	151137	75,55	181	0,09	7790	3,89
MARAMURES	119344	2,04	35462	29,71	78692	65,94	165	0,14	5190	4,35
MEHEDINTI	62855	1,07	15988	25,44	41362	65,81	61	0,10	5505	8,76
MURES	137992	2,36	34420	24,94	98471	71,36	77	0,06	5101	3,70
NEAMT	115565	1,97	30846	26,69	79480	68,78	311	0,27	5239	4,53
OLT	85521	1,46	20120	23,53	58462	68,36	65	0,08	6939	8,11
PRAHOVA	211538	3,61	44939	21,24	158617	74,98	269	0,13	7982	3,77
SALAJ	46517	0,79	12773	27,46	31189	67,05	36	0,08	2555	5,49
SATU MARE	94476	1,61	22806	24,14	64955	68,75	27	0,03	6715	7,11
SIBIU	127847	2,18	25828	20,20	97981	76,64	60	0,05	4038	3,16
SUCEAVA	134014	2,29	35236	26,29	93555	69,81	27	0,02	5223	3,90
TELEORMAN	67510	1,15	15765	23,35	50122	74,24	71	0,11	1623	2,40
TIMIS	229718	3,92	46118	20,08	174144	75,81	292	0,13	9456	4,12
TULCEA	60884	1,04	14236	23,38	44177	72,56	150	0,25	2471	4,06
VASLUI	66731	1,14	17986	26,95	44606	66,84	46	0,07	4139	6,20
VALCEA	94815	1,62	23208	24,48	67744	71,45	116	0,12	3863	4,07
VRANCEA	74142	1,27	17189	23,18	55397	74,72	45	0,06	1556	2,10
MUN. BUCURESTI	1198190	20,46	261556	21,83	868517	72,49	2827	0,24	68117	5,68
ILFOV	70569	1,21	19897	28,20	47483	67,29	40	0,06	3189	4,52

\*) according to Law no. 314/2001, art.1 și art. 6

\*\*\* Less than 0,01%

Table no. 2

**Operations prosecuted in the Trade Registry  
between December 1990 and July 2005  
- counties' rate in total country -**

Counties	Total operations prosecuted		out of which :							
			Registered companies		Mentions		out of which : of liquidation, dissolution		Erased companies	
	No.	%	No.	%	No.	%	No.	%	No.	%
0	1	2	3	4	5	6	7	8	11	12
<b>Total ROMANIA</b>	<b>5855238</b>	<b>100,00</b>	<b>1367161</b>	<b>23,35</b>	<b>4212282</b>	<b>71,94</b>	<b>9862</b>	<b>0,17</b>	<b>275795</b>	<b>4,71</b>
ALBA	80368	100,00	21022	26,16	57611	71,68	348	0,43	1735	2,16
ARAD	128521	100,00	32815	25,53	90036	70,06	430	0,33	5670	4,41
ARGES	143743	100,00	35265	24,53	102826	71,53	209	0,15	5652	3,93
BACAU	141269	100,00	35014	24,79	100256	70,97	1005	0,71	5999	4,25
BIHOR	181518	100,00	39827	21,94	134656	74,18	310	0,17	7035	3,88
BISTRITA-NASAUD	75193	100,00	16888	22,46	54578	72,58	74	0,10	3727	4,96
BOTOSANI	54926	100,00	16952	30,86	35573	64,77	64	0,12	2401	4,37
BRASOV	192335	100,00	42202	21,94	143405	74,56	144	0,07	6728	3,50
BRAILA	77419	100,00	19396	25,05	56721	73,26	47	0,06	1302	1,68
BUZAU	109367	100,00	25565	23,38	79299	72,51	173	0,16	4503	4,12
CARAS-SEVERIN	78843	100,00	16772	21,27	55720	70,67	108	0,14	6351	8,06
CALARASI	52755	100,00	14078	26,69	36461	69,11	68	0,13	2216	4,20
CLUJ	251160	100,00	61741	24,58	185778	73,97	226	0,09	3641	1,45
CONSTANTA	254694	100,00	58271	22,88	180649	70,93	932	0,37	15774	6,19
COVASNA	56001	100,00	11698	20,89	41719	74,50	38	0,07	2584	4,61
DAMBOVITA	88484	100,00	25783	29,14	56024	63,32	55	0,06	6677	7,55
DOLJ	153776	100,00	36247	23,57	109227	71,03	223	0,15	8302	5,40
GALATI	167468	100,00	32673	19,51	126054	75,27	129	0,08	8741	5,22
GIURGIU	39477	100,00	11050	27,99	25249	63,96	50	0,13	3178	8,05
GORJ	78437	100,00	16595	21,16	58036	73,99	116	0,15	3806	4,85
HARGHITA	83122	100,00	20082	24,16	61540	74,04	43	0,05	1500	1,80
HUNEDOARA	110278	100,00	28545	25,88	73615	66,75	129	0,12	8118	7,36
IALOMITA	57808	100,00	13186	22,81	41158	71,20	75	0,13	3464	5,99
IASI	200048	100,00	41121	20,56	151137	75,55	181	0,09	7790	3,89
MARAMURES	119344	100,00	35462	29,71	78692	65,94	165	0,14	5190	4,35
MEHEDINTI	62855	100,00	15988	25,44	41362	65,81	61	0,10	5505	8,76
MURES	137992	100,00	34420	24,94	98471	71,36	77	0,06	5101	3,70
NEAMT	115565	100,00	30846	26,69	79480	68,78	311	0,27	5239	4,53
OLT	85521	100,00	20120	23,53	58462	68,36	65	0,08	6939	8,11
PRAHOVA	211538	100,00	44939	21,24	158617	74,98	269	0,13	7982	3,77
SALAJ	46517	100,00	12773	27,46	31189	67,05	36	0,08	2555	5,49
SATU MARE	94476	100,00	22806	24,14	64955	68,75	27	0,03	6715	7,11
SIBIU	127847	100,00	25828	20,20	97981	76,64	60	0,05	4038	3,16
SUCEAVA	134014	100,00	35236	26,29	93555	69,81	27	0,02	5223	3,90
TELEORMAN	67510	100,00	15765	23,35	50122	74,24	71	0,11	1623	2,40
TIMIS	229718	100,00	46118	20,08	174144	75,81	292	0,13	9456	4,12
TULCEA	60884	100,00	14236	23,38	44177	72,56	150	0,25	2471	4,06
VASLUI	66731	100,00	17986	26,95	44606	66,84	46	0,07	4139	6,20
VALCEA	94815	100,00	23208	24,48	67744	71,45	116	0,12	3863	4,07
VRANCEA	74142	100,00	17189	23,18	55397	74,72	45	0,06	1556	2,10
MUN. BUCURESTI	1198190	100,00	261556	21,83	868517	72,49	2827	0,24	68117	5,68
ILFOV	70569	100,00	19897	28,20	47483	67,29	40	0,06	3189	4,52

\*) according to Law no. 314/2001, art.1 și art. 6

\*\*\* Less than 0,01%

Table no. 3

**Number and structure of new registered companies in the Trade Registry  
by year, between December 1990 and July 2005**

Period (year, month)	Registered companies		Percentage	
	No.	%	%	
0	1	2	3	
<b>Total, 31 February 2005,</b>	<b>1367161</b>	<b>100,00</b>		
Year 1990	81	0,01		
Year 1991	95840	7,01		
Year 1992	137456	10,05		
Year 1993	117078	8,56		
Year 1994	137445	10,05		
Year 1995	65479	4,79		
Year 1996	62089	4,54		
Year 1997	55663	4,07		
Year 1998	63878	4,67		
Year 1999	57197	4,18		
Year 2000	57291	4,19		
Year 2001	61265	4,48		
Year 2002	84780	6,20		
Year 2003	123582	9,04		
Year 2004	144284	10,55		
<b>Year 2005 (1.I-31.XII) out of which</b>	<b>103753</b>	<b>7,59</b>	<b>100,00</b>	
- January	10148			9,78
- February	16238			15,65
- Mars	20378			19,64
- April	16782			16,17
- May	14305			13,79
- July	14380			13,86
- July	11522			11,11

Note: Column no.2 represents yearly structure of new registered companies; column no.3 represents monthly structure in the current year

\*\*\* Less than 0,01%

Diagram no.1

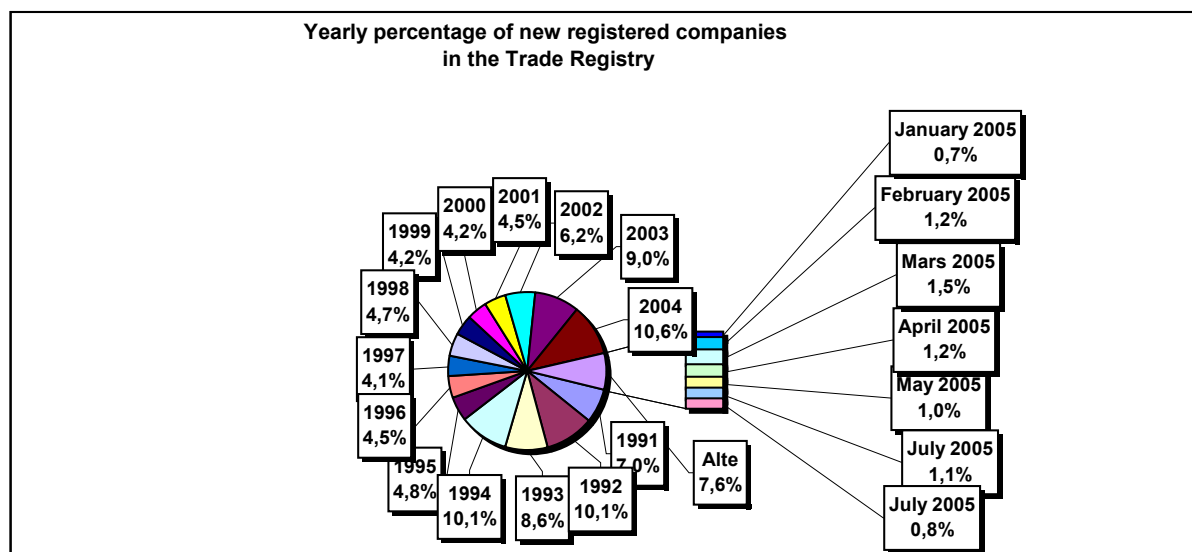


Table no.4

**Number of new registered in the Trade Registry,  
by county and capital provenance  
between December 1990 and July 2005**

Counties	Total		out of which:					
			Private capital			State majority capital		Mixed capital (state+private)
			out of which:			out of which:		
			PF+AF	Companies	OC	RA	Companies	Companies
No.	%	No.	No.	No.	No.	No.	No.	
0	1	2	3	4	5	6	7	8
<b>Total ROMANIA</b>	<b>1367161</b>	<b>100,00</b>	<b>339181</b>	<b>1010393</b>	<b>5383</b>	<b>1316</b>	<b>2347</b>	<b>8541</b>
ALBA	21022	1,54	7010	13619	141	35	47	170
ARAD	32816	2,40	12634	19627	157	26	40	332
ARGES	35265	2,58	11368	23519	168	29	29	152
BACAU	35014	2,56	11554	23003	158	34	42	223
BIHOR	39827	2,91	7566	31714	144	34	62	307
BISTRITA-NASAUD	16888	1,24	5974	10659	98	19	29	109
BOTOSANI	16952	1,24	7427	9091	122	21	172	119
BRASOV	42202	3,09	8166	33627	114	40	87	168
BRAILA	19396	1,42	4662	14402	96	28	43	165
BUZAU	25565	1,87	7178	18047	142	25	42	131
CARAS-SEVERIN	16772	1,23	5799	10636	102	33	65	137
CALARASI	14078	1,03	3993	9812	86	18	76	93
CLUJ	61741	4,52	14799	46439	150	52	40	261
CONSTANTA	58271	4,26	10907	46523	203	50	48	540
COVASNA	11698	0,86	3721	7745	67	24	32	109
DAMBOVITA	25783	1,89	11966	13427	134	29	75	152
DOLJ	36247	2,65	6522	29267	162	39	56	201
GALATI	32673	2,39	5892	26422	135	30	51	143
GIURGIU	11050	0,81	2463	8267	80	21	109	110
GORJ	16595	1,21	3520	12658	184	50	83	100
HARGHITA	20082	1,47	7332	12371	85	23	42	229
HUNEDOARA	28545	2,09	7454	20599	81	37	92	282
IALOMITA	13186	0,96	5067	7893	74	15	46	91
IASI	41121	3,01	10922	29588	164	33	70	344
MARAMURES	35462	2,59	14602	20542	121	35	39	123
MEHEDINTI	15988	1,17	4811	10952	82	19	26	98
MURES	34420	2,52	12645	21390	154	30	34	167
NEAMT	30846	2,26	11191	19270	161	29	30	165
OLT	20120	1,47	8011	11735	161	26	64	123
PRAHOVA	44939	3,29	13240	31143	177	50	66	263
SALAJ	12773	0,93	4855	7704	107	19	27	61
SATU MARE	22806	1,67	7016	15508	88	19	41	134
SIBIU	25828	1,89	5888	19527	116	31	108	158
SUCEAVA	35236	2,58	16817	17905	201	30	63	220
TELEORMAN	15765	1,15	5285	10086	152	21	41	180
TIMIS	46118	3,37	6543	38985	140	37	68	345
TULCEA	14236	1,04	4438	9460	66	18	42	212
VASLUI	17986	1,32	8833	8852	109	16	41	135
VALCEA	23208	1,70	9064	13786	168	40	37	113
VRANCEA	17189	1,26	5094	11836	103	16	27	113
MUN. BUCURESTI	261555	19,13	14558	245538	138	115	103	1103
ILFOV	19897	1,46	2394	17219	92	20	12	160

\*\*\* Less than 0,01%

Table no. 5

**Number of new registered in the Trade Registry,  
by county and company type  
between December 1990 and July 2005**

County	Total		out of which:						RA	OC
			PF+AF	companies: 1021281						
	SNC	SCS		SRL	SA	No.	No.			
	No.	%	No.	No.	No.			No.	No.	No.
0	1	2	3	4	5	6	7	8	9	
<b>Total ROMANIA</b>	<b>1367161</b>	<b>100,00</b>	<b>339181</b>	<b>32631</b>	<b>1551</b>	<b>956383</b>	<b>30710</b>	<b>1316</b>	<b>5383</b>	
ALBA	21022	1,54	7010	888	11	12405	532	35	141	
ARAD	32815	2,40	12634	51	8	19297	641	26	157	
ARGES	35265	2,58	11368	107	13	22795	785	29	168	
BACAU	35014	2,56	11554	1299	4	21270	694	34	158	
BIHOR	39827	2,91	7566	125	47	31042	869	34	144	
BISTRITA-NASAUD	16888	1,24	5974	146	21	10230	400	19	98	
BOTOSANI	16952	1,24	7427	468	1	8478	435	21	122	
BRASOV	42202	3,09	8166	239	19	32823	801	40	114	
BRAILA	19396	1,42	4662	376	12	13726	496	28	96	
BUZAU	25565	1,87	7178	3747	46	13883	544	25	142	
CARAS-SEVERIN	16772	1,23	5799	116	8	10267	447	33	102	
CALARASI	14078	1,03	3993	609	3	9030	339	18	86	
CLUJ	61741	4,52	14799	2110	18	43432	1180	52	150	
CONSTANTA	58271	4,26	10907	311	23	45355	1422	50	203	
COVASNA	11698	0,86	3721	148	4	7447	287	24	67	
DAMBOVITA	25783	1,89	11966	60	8	13115	471	29	134	
DOLJ	36247	2,65	6522	1560	8	27117	839	39	162	
GALATI	32673	2,39	5892	1574	6	24236	800	30	135	
GIURGIU	11050	0,81	2463	35	8	8132	311	21	80	
GORJ	16595	1,21	3520	28	1	12345	467	50	184	
HARGHITA	20082	1,47	7332	62	6	12105	469	23	85	
HUNEDOARA	28545	2,09	7454	1166	98	19062	647	37	81	
IALOMITA	13186	0,96	5067	266	11	7426	327	15	74	
IASI	41121	3,01	10922	506	111	28417	966	33	164	
MARAMURES	35462	2,59	14602	1926	23	18183	571	35	121	
MEHEDINTI	15988	1,17	4811	427	3	10331	315	19	82	
MURES	34420	2,52	12645	37	34	20891	629	30	154	
NEAMT	30846	2,26	11191	3293	30	15498	644	29	161	
OLT	20120	1,47	8011	1611	1	9836	474	26	161	
PRAHOVA	44939	3,29	13240	3121	12	27502	837	50	177	
SALAJ	12773	0,93	4855	600	4	6914	274	19	107	
SATU MARE	22806	1,67	7016	283	5	14947	448	19	88	
SIBIU	25828	1,89	5888	775	48	18350	620	31	116	
SUCEAVA	35236	2,58	16817	438	8	17184	558	30	201	
TELEORMAN	15765	1,15	5285	272	399	9237	399	21	152	
TIMIS	46118	3,37	6543	602	26	37574	1196	37	140	
TULCEA	14236	1,04	4438	1363	112	7778	461	18	66	
VASLUI	17986	1,32	8833	90	11	8535	392	16	109	
VALCEA	23208	1,70	9064	363	6	13108	459	40	168	
VRANCEA	17189	1,26	5094	356	9	11178	433	16	103	
MUN. BUCURESTI	261556	19,13	14558	1028	295	239137	6284	115	138	
ILFOV	19897	1,46	2394	49	30	16765	547	20	92	

Table no. 6

**Number of new registered in the Trade Registry  
by fields of activity\* and company type  
between December 1990 and July 2005**

CAEN segment	Field of activity	Total		out of which:						
				PF+AF	companies: 1021281				RA	OC
					SNC	SCS	SRL	SA		
					No.	No.	No.	No.		
0	1	2	3	4	5	6	7	8	9	10
	<b>Total ROMÂNIA</b>	<b>1367106</b>	<b>100,00</b>	<b>339149</b>	<b>32631</b>	<b>1551</b>	<b>956362</b>	<b>30708</b>	<b>1316</b>	<b>5383</b>
1	Agricultura și servicii auxiliare	52774	3,86	9613	2023	44	37162	3765	50	117
2	Silvicultură, exploatare forestieră și economia vînatului	7305	0,53	883	152	3	5966	218	75	8
5	Pescuitul și piscicultura	2168	0,16	1118	17	3	977	53		
10	Extracția și prepararea cărbunelui	98	0,01	2			64	28	4	
11	Extracția petrolului și gazelor naturale (exclusiv prospecțiunile)	306	0,02	3	1		135	121	46	
12	Extracția și prepararea minereurilor radioactive	133	0,01	32			95	6		
13	Extracția și prepararea minereurilor metalifere	520	0,04	163			294	55	8	
14	Alte activități extractive	1336	0,10	104	9	1	1052	167	2	1
15	Industria alimentară și a băuturilor	70289	5,14	12864	3260	149	51939	1824	5	248
16	Industria tutunului	284	0,02	47			205	31	1	
17	Industria textilă și a produselor textile	11117	0,81	2172	556	16	7824	405		144
18	Industria confecțiilor de îmbrăcăminte	19526	1,43	4302	875	38	13650	355	1	305
19	Industria pielăriei și încălțămintei	4900	0,36	833	112	6	3775	122	1	51
20	Industria de prelucrare a lemnului (exclusiv producția de mobilă)	22633	1,66	7648	575	29	13837	493	9	42
21	Industria celulozei, hîrtiei și cartonului	1625	0,12	106	21	1	1387	97		13
22	Edituri, poligrafie și reproducerea înregistrărilor pe suport	10746	0,79	868	317	21	9120	396	14	10
23	Industria de prelucrare a țigiiului, cocsificarea cărbunelui și tratarea combustibililor nucleari	243	0,02	23			184	34	2	
24	Industria chimică și a fibrelor sintetice și artificiale	3492	0,26	113	89	1	2905	372	6	6
25	Industria de prelucrare a cauciucului și a maselor plastice	5541	0,41	523	313	7	4417	256		24
26	Industria altor produse din minerale nemetalice	8018	0,59	2371	212	6	5033	378	5	13
27	Industria metalurgică	2343	0,17	164	39	3	1921	206	3	7
28	Industria construcțiilor metalice și a produselor din metal (exclusiv mașini, utilaje și instalații)	14588	1,07	3178	361	23	10238	715	11	62
29	Industria de mașini și echipamente	3518	0,26	91	44	7	2935	417	19	5
30	Industria de mijloace ale tehnicii de calcul și de birou	1713	0,13	14	25	3	1591	80		
31	Industria de mașini și aparate electrice	1780	0,13	102	44	6	1479	143		6
32	Industria de echipamente, aparate de radio, televiziune și comunicații	804	0,06	49	14	4	663	73		1
33	Industria de aparatură și instrumente medicale, de precizie, optice și ceasornicărie	2221	0,16	530	17	2	1571	97		4
34	Industria mijloacelor de transport rutier	838	0,06	29	31	3	652	121		2
35	Industria altor mijloace de transport	1695	0,12	257	86	7	1151	119	73	2
36	Producția de mobilier și alte activități industriale n.c.a.	13714	1,00	3809	284	16	9117	325	5	158
37	Recuperarea deșeurilor și resturilor de materiale reciclabile	4297	0,31	384	51	5	3687	169		1
40	Producția, transportul și distribuția de energie electrică și termică, gaze și apă caldă	2774	0,20	833	3	1	1355	494	88	
41	Gospodărirea resurselor de apă, captarea, tratarea și distribuția apei	3492	0,26	1614	2		1628	175	73	
45	Construcții	70304	5,14	18404	611	42	48751	2366	53	77

\*)Field of activity declared when registered, according to CAEN classification

**Table no. 6**  
(continuance)

**Number of new registered in the Trade Registry  
by fields of activity\* and company type  
between December 1990 and July 2005**

CAEN segment	Field of activity	Total		out of which:						
				PF+AF	companies: 1021281				RA	OC
					SNC	SCS	SRL	SA		
					No.	No.	No.	No.		
0	1	2	3	4	5	6	7	8	9	10
	<b>Total ROMANIA</b>	<b>1367106</b>	<b>100,00</b>	<b>339149</b>	<b>32631</b>	<b>1551</b>	<b>956362</b>	<b>30708</b>	<b>1316</b>	<b>5383</b>
50	Vinzarea, întreținerea și repararea autovehiculelor și a motocicletelor; comerț cu amănuntul al carburanților pentru autovehicule	48842	3,57	7269	1244	34	39228	1020	5	42
51	Comerț cu ridicata (cu excepția autovehiculelor și motocicletelor)	183532	13,42	13907	4523	148	161395	3243	35	281
52	Comerț cu amănuntul (cu excepția autovehiculelor și motocicletelor); repararea bunurilor personale și gospodărești	459177	33,59	159661	11914	556	282187	2477	5	2376
55	Hoteluri și restaurante	51998	3,80	12531	1634	126	36777	762	73	95
60	Transporturi terestre; transporturi prin conducte	69571	5,09	31410	844	36	36198	1040	33	10
61	Transporturi pe apă	792	0,06	139	82	8	428	64	70	1
62	Transporturi aeriene	275	0,02	17			204	44	10	
63	Activități anexe și auxiliare de transport, activități ale agențiilor de turism	8848	0,65	510	220	14	7569	428	96	11
64	Poșta și telecomunicații	5528	0,40	339	11	1	4874	289	11	3
65	Activități ale instituțiilor financiare și bancare (cu excepția activităților de asigurări și ale caselor de pensii)	5419	0,40	142	15		2271	1957	2	1032
66	Activități de asigurări și ale caselor de pensii (cu excepția celor din sistemul public de asigurări sociale)	1940	0,14	604	1		499	835		1
67	Activități auxiliare ale instituțiilor financiare și de asigurări	5706	0,42	1231	6	2	4189	270		8
70	Tranzacții imobiliare	15168	1,11	640	28	7	13945	525	17	6
71	Închirierea mașinilor și echipamentelor fără operator și a bunurilor personale și gospodărești	2741	0,20	560	116	8	1894	92	70	1
72	Informatică și activități conexe	17744	1,30	2496	119	13	14732	379	2	3
73	Cercetare - dezvoltare	1552	0,11	233	11	2	1095	166	43	2
74	Alte activități de servicii prestate în principal întreprinderilor	85116	6,23	17088	779	70	65438	1574	106	60
75	Administrație publică	353	0,03	87	5		214	25	21	1
80	Învățământ	5652	0,41	3020	62	5	2500	65		
85	Sănătate și asistență socială	14186	1,04	2053	233	15	11803	78	3	1
90	Asanarea și îndepărtarea gunoaielor; salubritate și activități similare	699	0,05	68	13	2	499	97	18	
91	Activități asociative diverse	203	0,01	90	1		94	15		3
92	Activități recreative, culturale și sportive	12875	0,94	2847	202	14	9455	279	66	12
93	Alte activități de servicii	21508	1,57	8701	418	42	11839	305	76	126
95	Activități ale personalului angajat în gospodăria personală	546	0,04	260	6	1	275	3		1
96	Activități ale organizațiilor și organismelor extrateritoriale									

\*)Field of activity declared when registered, according to CAEN classification

Table no. 7

**Operations prosecuted in the Trade Registry,  
by county, in July 2005**

County	Total operations prosecuted		out of which:							
			New registered		Mentions		out of which: of liquidation, dissolution		Erased companies	
	No.	%	No.	%	No.	%	No.	%	No.	%
0	1	2	3	4	5	6	7	8	11	12
<b>Total ROMANIA</b>	<b>945532</b>	<b>100,00</b>	<b>11522</b>	<b>1,22</b>	<b>931844</b>	<b>98,55</b>	<b>9721</b>	<b>1,03</b>	<b>2166</b>	<b>0,23</b>
ALBA	13383	100,00	176	1,32	13197	98,61	338	2,53	10	0,07
ARAD	20121	100,00	385	1,91	19705	97,93	429	2,13	31	0,15
ARGES	20445	100,00	305	1,49	20119	98,41	206	1,01	21	0,10
BACAU	26541	100,00	316	1,19	26190	98,68	995	3,75	35	0,13
BIHOR	31058	100,00	342	1,10	30690	98,82	308	0,99	26	0,08
BISTRITA-NASAUD	11877	100,00	170	1,43	11656	98,14	67	0,56	51	0,43
BOTOSANI	9396	100,00	138	1,47	9241	98,35	60	0,64	17	0,18
BRASOV	33252	100,00	320	0,96	32879	98,88	141	0,42	53	0,16
BRAILA	11737	100,00	139	1,18	11580	98,66	46	0,39	18	0,15
BUZAU	17722	100,00	265	1,50	17405	98,21	172	0,97	52	0,29
CARAS-SEVERIN	10512	100,00	118	1,12	10388	98,82	107	1,02	6	0,06
CALARASI	10469	100,00	119	1,14	10314	98,52	65	0,62	36	0,34
CLUJ	46238	100,00	517	1,12	45641	98,71	224	0,48	80	0,17
CONSTANTA	37602	100,00	447	1,19	37007	98,42	916	2,44	148	0,39
COVASNA	7310	100,00	92	1,26	7061	96,59	36	0,49	157	2,15
DAMBOVITA	13501	100,00	198	1,47	13195	97,73	55	0,41	108	0,80
DOLJ	25787	100,00	336	1,30	25423	98,59	221	0,86	28	0,11
GALATI	21996	100,00	257	1,17	21714	98,72	126	0,57	25	0,11
GIURGIU	6080	100,00	85	1,40	5988	98,49	48	0,79	7	0,12
GORJ	11625	100,00	127	1,09	11481	98,76	108	0,93	17	0,15
HARGHITA	15108	100,00	191	1,26	14881	98,50	39	0,26	36	0,24
HUNEDOARA	18239	100,00	223	1,22	17992	98,65	127	0,70	24	0,13
IALOMITA	9935	100,00	85	0,86	9821	98,85	73	0,73	29	0,29
IASI	29397	100,00	342	1,16	28949	98,48	179	0,61	106	0,36
MARAMURES	17967	100,00	304	1,69	17603	97,97	156	0,87	60	0,33
MEHEDINTI	8534	100,00	124	1,45	8406	98,50	60	0,70	4	0,05
MURES	22978	100,00	334	1,45	22600	98,35	77	0,34	44	0,19
NEAMT	23495	100,00	251	1,07	22947	97,67	307	1,31	297	1,26
OLT	12586	100,00	125	0,99	12446	98,89	64	0,51	15	0,12
PRAHOVA	30838	100,00	368	1,19	30422	98,65	261	0,85	48	0,16
SALAJ	7467	100,00	170	2,28	7283	97,54	35	0,47	14	0,19
SATU MARE	13555	100,00	177	1,31	13366	98,61	25	0,18	12	0,09
SIBIU	18772	100,00	248	1,32	18480	98,44	59	0,31	44	0,23
SUCEAVA	23801	100,00	249	1,05	23493	98,71	26	0,11	59	0,25
TELEORMAN	9789	100,00	102	1,04	9668	98,76	65	0,66	19	0,19
TIMIS	32992	100,00	567	1,72	32409	98,23	291	0,88	16	0,05
TULCEA	9655	100,00	145	1,50	9493	98,32	149	1,54	17	0,18
VASLUI	11312	100,00	149	1,32	11032	97,52	45	0,40	131	1,16
VALCEA	13907	100,00	178	1,28	13702	98,53	114	0,82	27	0,19
VRANCEA	11972	100,00	141	1,18	11790	98,48	44	0,37	41	0,34
MUN. BUCURESTI	203443	100,00	1974	0,97	201293	98,94	2817	1,38	176	0,09
ILFOV	13138	100,00	223	1,70	12894	98,14	40	0,30	21	0,16

\*) as an effect of the Law no. 314/2001, art.1 and art. 6

\*\*\* Less than 0,01%

Table no. 8

**Number of new registered companies in the Trade Registry,  
by county and capital provenance,  
in July 2005**

County	Total		out of which:					
			Private capital			State majority capital		Mixed capital (state+private)
			out of which:			out of which:		
			PF+AF	Companies	OC	RA	Companies	Companies
No.	%	No.	No.	No.	No.	No.		
0	1	2	3	4	5	6	7	8
<b>Total ROMANIA</b>	<b>11522</b>	<b>100,00</b>	<b>4585</b>	<b>6934</b>		<b>2</b>	<b>1</b>	
ALBA	176	1,53	73	103				
ARAD	385	3,34	180	205				
ARGES	305	2,65	144	161				
BACAU	316	2,74	129	187				
BIHOR	342	2,97	159	183				
BISTRITA-NASAUD	170	1,48	80	90				
BOTOSANI	138	1,20	85	53				
BRASOV	320	2,78	98	222				
BRAILA	139	1,21	66	73				
BUZAU	265	2,30	157	108				
CARAS-SEVERIN	118	1,02	48	70				
CALARASI	119	1,03	59	60				
CLUJ	517	4,49	216	300		1		
CONSTANTA	447	3,88	145	302				
COVASNA	92	0,80	52	40				
DAMBOVITA	198	1,72	114	84				
DOLJ	336	2,92	132	204				
GALATI	257	2,23	77	180				
GIURGIU	85	0,74	50	35				
GORJ	127	1,10	75	52				
HARGHITA	191	1,66	107	84				
HUNEDOARA	223	1,94	97	126				
IALOMITA	85	0,74	35	50				
IASI	342	2,97	131	211				
MARAMURES	304	2,64	157	147				
MEHEDINTI	124	1,08	62	62				
MURES	334	2,90	161	172		1		
NEAMT	251	2,18	140	111				
OLT	125	1,08	63	62				
PRAHOVA	368	3,19	158	210				
SALAJ	170	1,48	105	65				
SATU MARE	177	1,54	81	96				
SIBIU	248	2,15	91	157				
SUCEAVA	249	2,16	145	103			1	
TELEORMAN	102	0,89	52	50				
TIMIS	567	4,92	231	336				
TULCEA	145	1,26	85	60				
VASLUI	149	1,29	83	66				
VALCEA	178	1,54	98	80				
VRANCEA	141	1,22	76	65				
MUN. BUCURESTI	1974	17,13	252	1722				
ILFOV	223	1,94	36	187				

\*\*\* Less than 0,01%

**Number of new registered in the Trade Registry,  
by county and company type,  
in July 2005**

County	Total		out of which:					RA	OC
			PF+AF	companies: 6935					
	No.	%		No.	SNC	SCS	SRL	SA	No.
			No.		No.	No.	No.		
0	1	2	3	4	5	6	7	8	9
<b>Total ROMANIA</b>	<b>11522</b>	<b>100,00</b>	<b>4585</b>	<b>1</b>	<b>1</b>	<b>6864</b>	<b>69</b>	<b>2</b>	
ALBA	176	1,53	73			101	2		
ARAD	385	3,34	180			204	1		
ARGES	305	2,65	144			159	2		
BACAU	316	2,74	129			185	2		
BIHOR	342	2,97	159			183			
BISTRITA-NASAUD	170	1,48	80			88	2		
BOTOSANI	138	1,20	85			52	1		
BRASOV	320	2,78	98			220	2		
BRAILA	139	1,21	66			73			
BUZAU	265	2,30	157			106	2		
CARAS-SEVERIN	118	1,02	48			68	2		
CALARASI	119	1,03	59			58	2		
CLUJ	517	4,49	216			299	1	1	
CONSTANTA	447	3,88	145			295	7		
COVASNA	92	0,80	52			40			
DAMBOVITA	198	1,72	114			84			
DOLJ	336	2,92	132			202	2		
GALATI	257	2,23	77			175	5		
GIURGIU	85	0,74	50			35			
GORJ	127	1,10	75			51	1		
HARGHITA	191	1,66	107			84			
HUNEDOARA	223	1,94	97			125	1		
IALOMITA	85	0,74	35			50			
IASI	342	2,97	131			209	2		
MARAMURES	304	2,64	157			147			
MEHEDINTI	124	1,08	62			62			
MURES	334	2,90	161			171	1	1	
NEAMT	251	2,18	140			110	1		
OLT	125	1,08	63			61	1		
PRAHOVA	368	3,19	158			207	3		
SALAJ	170	1,48	105			65			
SATU MARE	177	1,54	81			96			
SIBIU	248	2,15	91			156	1		
SUCEAVA	249	2,16	145			103	1		
TELEORMAN	102	0,89	52			50			
TIMIS	567	4,92	231	1		334	1		
TULCEA	145	1,26	85			60			
VASLUI	149	1,29	83			66			
VALCEA	178	1,54	98			80			
VRANCEA	141	1,22	76			65			
MUN. BUCURESTI	1974	17,13	252		1	1702	19		
ILFOV	223	1,94	36			183	4		

Table no. 10

**Number of new registered in the Trade Registry  
by fields of activity\* and company type  
in July 2005**

CAEN segment	Field of activity	Total		out of which:						
				PF+AF	companies: 6935				RA	OC
		SNC	SCS		SRL	SA				
		No.	%	No.	No.	No.	No.	No.	No.	
0	1	2	3	4	5	6	7	8	9	10
	<b>Total ROMANIA</b>	<b>11521</b>	<b>100,00</b>	<b>4584</b>	<b>1</b>	<b>1</b>	<b>6864</b>	<b>69</b>	<b>2</b>	
1	Agricultura, vanatoare si servicii anexe	464	4,03	286			177	1		
2	Silvicultura, exploatare forestiera si servicii anexe	61	0,53	12			47		2	
5	Pescuitul, piscicultura si serviciile anexe	68	0,59	54			14			
10	Extractia si prepararea carbunelui	1	0,01	1						
11	Extractia hidrocarburilor si servicii anexe	4	0,03				4			
12	Extractia si prepararea minereurilor radioactive									
13	Extractia si prepararea minereurilor metalifere									
14	Alte activitati extractive	9	0,08	2			7			
15	Industria alimentara si a bauturilor	239	2,07	146			92	1		
16	Fabricarea produselor din tutun									
17	Fabricarea produselor textile	37	0,32	16			21			
18	Fabricarea articolelor de imbracaminte; aranjarea si vopsirea blanurilor	68	0,59	35			33			
19	Tabacirea si finisarea pieilor; fabricarea articolelor de voiaj si marochinarie, a harnasamentelor si incaltamintei	38	0,33	13			25			
20	Fabricarea lemnului si a produselor din lemn si pluta, cu exceptia mobilei; fabricarea articolelor din impletitura de pai si alte materiale vegetale	238	2,07	161			77			
21	Fabricarea celulozei, hartiei si a produselor din hartie	10	0,09				10			
22	Edituri, poligrafie si reproducerea pe suporti a inregistrarilor	63	0,55	7			55	1		
23	Industria de prelucrare a titeiului, cocsificarea carbunelui si tratarea combustibililor nucleari	1	0,01				1			
24	Fabricarea substantelor si a produselor chimice	14	0,12	5			8	1		
25	Fabricarea produselor din cauciuc si mase plastice	40	0,35	5			35			
26	Fabricarea altor produse din minerale nemetalice	87	0,76	47			39	1		
27	Industria metalurgica	8	0,07	4			4			
28	Industria constructiilor metalice si a produselor din metal (exclusiv masini, utilaje si instalatii)	183	1,59	89			92	2		
29	Industria de masini si echipamente	22	0,19	2			20			
30	Industria de mijloace ale tehnicii de calcul si de birou	3	0,03				3			
31	Industria de masini si aparate electrice	8	0,07				8			
32	Industria de echipamente pentru radio, televiziune si comunicatii	5	0,04				4	1		
33	Industria de aparatura si instrumente medicale, de precizie, optice si fotografice, ceasornicarie	23	0,20	8	1		13	1		
34	Industria mijloacelor de transport rutier	3	0,03				3			
35	Industria altor mijloace de transport n.c.a.	9	0,08	1			8			
36	Productia de mobilier si alte activitati industriale n.c.a.	110	0,95	48			62			
37	Recuperarea deseurilor si resturilor de materiale reciclabile	21	0,18	1			20			



Table no.11

**Number of companies registered  
and the amount of subscribed capital, by county,  
in July 2005**

County	Total registered companies		Subscribed capital		Average subscribed capital on company
	No.	%	mil. ROL	%	mil. ROL
0	1	2	3	4	5
<b>Total ROMANIA</b>	<b>6935</b>	<b>100,00</b>	<b>1649858,8</b>	<b>100,00</b>	<b>238,7</b>
ALBA	103	1,49	115,9	***	1,1
ARAD	205	2,96	1196,0	0,07	5,8
ARGES	161	2,32	580,5	0,04	3,6
BACAU	187	2,70	2794,6	0,17	14,9
BIHOR	183	2,64	232,9	0,01	1,3
BISTRITA-NASAUD	90	1,30	80,8	***	0,9
BOTOSANI	53	0,76	29,1	***	0,5
BRASOV	222	3,20	20690,0	1,25	94,0
BRAILA	73	1,05	40,2	***	0,6
BUZAU	108	1,56	135,8	***	1,3
CARAS-SEVERIN	70	1,01	156,8	***	2,2
CALARASI	60	0,87	47,3	***	0,8
CLUJ	300	4,33	584,2	0,04	1,9
CONSTANTA	302	4,35	1014,7	0,06	3,4
COVASNA	40	0,58	139,7	***	3,5
DAMBOVITA	84	1,21	64,5	***	0,8
DOLJ	204	2,94	147,9	***	0,7
GALATI	180	2,60	154,4	***	0,9
GIURGIU	35	0,50	26,5	***	0,8
GORJ	52	0,75	23,7	***	0,5
HARGHITA	84	1,21	73,2	***	0,9
HUNEDOARA	126	1,82	33,8	***	0,3
IALOMITA	50	0,72	14,4	***	0,3
IASI	211	3,04	205,3	0,01	1,0
MARAMURES	147	2,12	1139,7	0,07	7,8
MEHEDINTI	62	0,89	18,7	***	0,3
MURES	172	2,48	4083,7	0,25	24,0
NEAMT	111	1,60	413,4	0,03	3,7
OLT	62	0,89	80,5	***	1,3
PRAHOVA	210	3,03	2318,4	0,14	11,0
SALAJ	65	0,94	18,6	***	0,3
SATU MARE	96	1,38	87,2	***	0,9
SIBIU	157	2,26	427,0	0,03	2,7
SUCEAVA	104	1,50	80,1	***	0,8
TELEORMAN	50	0,72	484,8	0,03	9,7
TIMIS	336	4,84	2345,3	0,14	7,0
TULCEA	60	0,87	41,2	***	0,7
VASLUI	66	0,95	17,0	***	0,3
VALCEA	80	1,15	47,6	***	0,6
VRANCEA	65	0,94	38,1	***	0,6
MUN. BUCURESTI	1722	24,83	1492900,8	90,49	869,0
ILFOV	187	2,70	116734,6	7,08	624,2

\*\*\* Less than 0,01%

Table no. 12

**Number of new registered companies  
and the amount of subscribed capital, by company type,  
in July 2005**

Company type	Total registered companies		Subscribed capital		Average subscribed capital on company
	No.	%	mil. ROL	%	mil. ROL
0	1	2	3	4	5
<b>Total ROMANIA</b>	<b>6935</b>	<b>100,00</b>	<b>1649858,8</b>	<b>100,00</b>	<b>238,7</b>
SNC	1	0,01	0,30	***	0,30
SCS	1	0,01	124,96	***	124,96
SA	69	0,99	37201,73	2,25	676,40
SRL	6864	98,98	1612531,80	97,74	235,27
SCA					-

\*\*\* Less than 0,01%

Diagram no.4

