



MINISTRY OF JUSTICE

THE NATIONAL TRADE REGISTER OFFICE

Bucharest, 2, Octavian Goga Blvd., sector 3; Phone: +40 - 21 - 320.60.13; Fax: +40 - 21 - 320.58.29; Website: www.onrc.ro; E-mail: onrc@onrc.ro

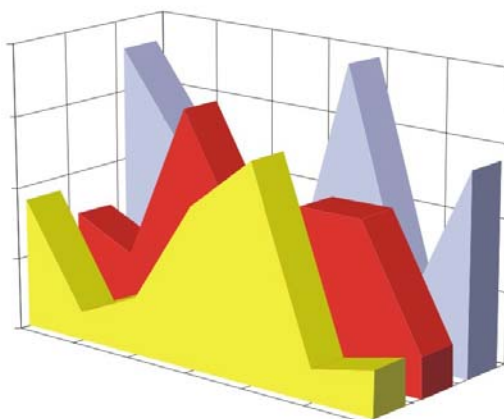
PROCEEDINGS IN THE CENTRAL TRADE REGISTER

STATISTICAL SYNTHESIS

OF

RECORDS IN THE CENTRAL TRADE REGISTER

- the 31th of December 2003 - provisional data -



- ISSUE No. 145 -

**MINISTRY OF JUSTICE
THE NATIONAL TRADE REGISTER OFFICE**

- Operations of incorporation of companies, changes in statutory documents and strike-off of companies are based on Law No.26/1990 reissued, Law No.31/1990, reissued, OUG No.76/2001, reissued and Methodology Norms No. P/608/1998.

- This paper presents the trend in operations registered in The Trade Register Office attached to the law court of Bucharest and in the Trade Register Offices attached to the law court in each county of Romania.

- Information recorded in the Central Trade Register concern operations compulsory by law to be registered in the trade registers within the 42 trade register offices attached to the law courts.

• No part of the content of this publication, in original or in any modified format, may be reproduced, stored in a retrieval system, or transmitted, in any form or by any means, without the prior permission in writing of The Ministry of Justice – The National Trade Register Office.

• The content of this publication may be referred to in articles, studies, books, as supporting or explanatory data under the condition only, the source of the information to be clearly and precisely specified.

Printed: January 2004

Contents

	Page
1 Explanatory Note	1
2.1 Data for December 1990 – December 2003	3
Table no.1 – Operations registered in the Trade Register, by categories during the period of December 1990 – December 2003, in total by country and counties, rate of categories of operations in total operations country	3
Table no.1.a – Operations registered in the Trade Register, by categories during the period of December 1990 – December 2003, in total by country and counties, counties' rate in total country	4
Table no.2 – Status of reissuing the incorporation certificate by exchange of the registration certificate, the 30 of December 2003	5
Table no. 3 – Number and structure of incorporations in the Trade Register, by years, during the period of December 1990- December 2003	6
Table no.4 – The number of incorporations in the Trade Register, by counties and sources of capital, in the period December 1990 - December 2003	7
Table no. 5 – The number of incorporations in the Trade Register, by counties and categories, during the period of December 1990 – December 2003	8
Table no. 6 – The number of incorporations in the Trade Register, by field of activity and categories, during the period of December 1990 - December 2003	9
2.2 Data for December 2003	11
Table no. 7 – Operations carried on with the Trade Registers, by counties and categories, in December 2003	11
Table no. 8 – The number of incorporations in the Trade Register, by counties and sources of capital, in December 2003	12
Table no. 9 – The number of incorporations in the Trade Register, by counties and category in December 2003	13
Table no. 10 –The number of incorporations in the Trade Register, by field of activity and categories in December 2003	14
Table no. 11 – Number of companies registered and the amount of subscribed capital, by county in December 2003	16
Table no. 12– Number of registered companies and the amount of subscribed capital by category, in December 2003	17
Diagram no. 5 – Average subscribed capital on company in December 2003	17

Explanatory Note

The Trade Register Office is set-up by Law No. 26/1990, reissued and modified by OUG No. 129/2002, became an active institution since December 1990 and is structured in two levels:

- the national level, represented by the National Trade Register Office organised under the Ministry of Justice
- the local level, represented by the 42 trade register offices attached to the law courts and co-ordinated by the National Trade Register Office

The categories of businessmen compulsory to register in the trade register are:

- natural persons tradesmen and family associations doing usually commercial acts, commercial companies, national companies, companies under state supervision, and co-operative organisations
- subsidiaries registered as commercial companies and legal persons following the legal proceedings of set-up, activity and incorporation according to the type of the legally set-up company.

Usual Terms:

- incorporation – represents the registration of the company in the trade registry awarding the quality of legal person.

- other statutory documents – represent the official registration of the changes occurred in a company's life, such as: changes in headquarters' address, increase or decrease of the issued capital, merger, liquidation, strike-off, etc.

- strike-off – represents the removal of a company from the trade registry, due to dissolution and liquidation, being also the very moment the company loses its quality of legal person. Data also include the companies under the provisions of Law No. 314/2001.

- change of certificate – represents the obligation of companies set-up before OGU No. 76/2001 republished came in force, to request the incorporation certificate and fiscal registration certificate to be replaced with the new registration certificate containing the given unique registration code.

The ratio of these changes is being calculated as a proportion between the effective number of changes and the number of active companies due to operate the change.

- active company from the legal point of view – a company registered in the trade register and which is not affected by any of the situations leading to the temporary or permanently loss of this status (e.g. dissolution, liquidation, strike-off)

- operations represent all the records in the trade registry including incorporations, other statutory documents and strike-off of companies, irrespective of the object of activity, company's type and origin of the subscribed capital (local or foreign investment).

• **Terms used in tables and charts**

➤ **Number of companies:** represents, depending on the specific table, the number of companies incorporated in the related period, the number of companies being struck-off from the trade registry.

➤ **Amount of the subscribed capital:**

- **total, in local currency:** the amount of the subscribed capital resulted from totalising the amount subscribed (in cash and in kind) in local currency (ROL)

➤ **Regional development:**

North-East: Suceava, Botoșani, Neamț, Iași, Bacău, Vaslui.

South-East: Vrancea, Galați, Buzău, Brăila, Tulcea, Constanța.

South-Muntenia: Argeș, Dâmbovița, Prahova, Teleorman, Giurgiu, Călărași, Ialomița.

South-West Oltenia: Gorj, Vâlcea, Dolj, Mehedinți, Olt.

West: Arad, Caraș-Severin, Hunedoara, Timiș.

North-West: Bihor, Bistrița, Cluj, Satu Mare, Sălaj, Maramureș.

Center: Alba, Brașov, Covasna, Harghita, Mureș, Sibiu.

Bucharest-Ilfov: București, Ilfov.

CAEN code – The Classification of Activities in the National Economy was approved by HG No. 656/1997, modified by Order No 601 of the President of National Institute of Statistics being compatible with the international classification used in statistic reports and official documents. Activities are ranked upon homogeneity principle by sections, divisions, groups and classes.

Common abbreviations

- **PF** - Natural Persons Tradesman
- **AF** - Family association
- **SNC** - General Partnership
- **SCS** - Limited Partnership
- **SA** - Joint stock company
- **SRL** - Limited liability company
- **RA** - Company Under State Supervision
- **OC** - Co-operative organisation

Source:

The integrated IT system of the trade registry is designed by The National Trade Registry Office according to the provisions of the related legislation in force. The source of information is the computerised system of the trade registers handled by the Trade Register Offices attached to the law courts.

Table no. 1

**Operations registered in the Trade Register, by categories
during the period of December 1990 - December 2003, in total by country and counties,
- rate of categories of operations in total operations/country -**

Counties	Total of registered operations		out of which :									
			Registered companies		Changes in statutory documents		out of which :				Strike off companies	
	of liquidation, dissolution						out of which :					
	No.	%	No.	%	No.	%	No.	%	No.	%	No.	%
0	1	2	3	4	5	6	7	8	9	10	11	12
Total ROMÂNIA	3455038	100,0	1119124	100,0	2131047	100,0	184906	100,0	175825	100,0	204867	100,0
ALBA	42978	1,2	16376	1,5	25886	1,2	3966	2,1	3596	2,0	716	0,3
ARAD	74692	2,2	25338	2,3	44980	2,1	3314	1,8	2974	1,7	4374	2,1
ARGES	75335	2,2	28387	2,5	45718	2,1	4262	2,3	4120	2,3	1230	0,6
BACAU	70355	2,0	28954	2,6	37628	1,8	6282	3,4	5280	3,0	3773	1,8
BIHOR	101980	3,0	32696	2,9	63352	3,0	4863	2,6	4599	2,6	5932	2,9
BISTRITA-NASAUD	38715	1,1	13628	1,2	22809	1,1	1216	0,7	1120	0,6	2278	1,1
BOTOSANI	31304	0,9	13361	1,2	16216	0,8	1635	0,9	1563	0,9	1727	0,8
BRASOV	115411	3,3	35080	3,1	74483	3,5	5017	2,7	4893	2,8	5848	2,9
BRAILA	49292	1,4	15571	1,4	33101	1,6	4583	2,5	4509	2,6	620	0,3
BUZAU	64295	1,9	20851	1,9	40153	1,9	2247	1,2	2109	1,2	3291	1,6
CARAS-SEVERIN	40062	1,2	14028	1,3	23078	1,1	1937	1,0	1922	1,1	2956	1,4
CALARASI	30935	0,9	11924	1,1	17176	0,8	76	0,0			1835	0,9
CLUJ	128019	3,7	48207	4,3	77767	3,6	8277	4,5	8113	4,6	2045	1,0
CONSTANTA	151849	4,4	48229	4,3	91067	4,3	11581	6,3	10621	6,0	12553	6,1
COVASNA	30319	0,9	9677	0,9	19055	0,9	1187	0,6	1175	0,7	1587	0,8
DAMBOVITA	54663	1,6	21875	2,0	27764	1,3	3029	1,6	2951	1,7	5024	2,5
DOLJ	82936	2,4	30001	2,7	46056	2,2	5861	3,2	5634	3,2	6879	3,4
GALATI	97187	2,8	27207	2,4	63153	3,0	5493	3,0	5346	3,0	6827	3,3
GIURGIU	23411	0,7	9273	0,8	11747	0,6	30	0,0			2391	1,2
GORJ	46427	1,3	14119	1,3	29049	1,4	2716	1,5	2667	1,5	3259	1,6
HARGHITA	42377	1,2	14976	1,3	26795	1,3	65	0,0			606	0,3
HUNEDOARA	60645	1,8	23465	2,1	33256	1,6	3065	1,7	2944	1,7	3924	1,9
IALOMITA	34116	1,0	11337	1,0	20523	1,0	1698	0,9	1586	0,9	2256	1,1
IASI	117572	3,4	33316	3,0	80098	3,8	4801	2,6	4224	2,4	4158	2,0
MARAMURES	78798	2,3	29938	2,7	45579	2,1	2962	1,6	2924	1,7	3281	1,6
MEHEDINTI	36898	1,1	13380	1,2	19812	0,9	3136	1,7	3085	1,8	3706	1,8
MURES	78943	2,3	27854	2,5	47313	2,2	3081	1,7	2944	1,7	3776	1,8
NEAMT	62632	1,8	25111	2,2	33718	1,6	2748	1,5	2435	1,4	3803	1,9
OLT	45958	1,3	17134	1,5	25564	1,2	2108	1,1	2033	1,2	3260	1,6
PRAHOVA	128190	3,7	36376	3,3	85287	4,0	4195	2,3	3935	2,2	6527	3,2
SALAJ	22643	0,7	9479	0,8	12061	0,6	689	0,4	683	0,4	1103	0,5
SATU MARE	53964	1,6	18194	1,6	32254	1,5	2946	1,6	2934	1,7	3516	1,7
SIBIU	77611	2,2	20222	1,8	54072	2,5	2605	1,4	2583	1,5	3317	1,6
SUCEAVA	76628	2,2	29859	2,7	42988	2,0	2392	1,3	2387	1,4	3781	1,8
TELEORMAN	41146	1,2	13297	1,2	27377	1,3	1541	0,8	1508	0,9	472	0,2
TIMIS	142016	4,1	35994	3,2	97592	4,6	7541	4,1	7273	4,1	8430	4,1
TULCEA	33618	1,0	12247	1,1	19650	0,9	1171	0,6	1003	0,6	1721	0,8
VASLUI	39501	1,1	14471	1,3	22751	1,1	1588	0,9	1386	0,8	2279	1,1
VALCEA	57162	1,7	19152	1,7	35052	1,6	2063	1,1	1888	1,1	2958	1,4
VRANCEA	39268	1,1	13655	1,2	24830	1,2	1706	0,9	1593	0,9	783	0,4
MUN. BUCURESTI	802279	23,2	219322	19,6	519089	24,4	53339	28,8	51406	29,2	63868	31,2
ILFOV	32908	1,0	15563	1,4	15148	0,7	1894	1,0	1879	1,1	2197	1,1

*) according to the effect of Law No. 314/2001, art.1 și art. 6

*** Less than 0,01%

Table no. 1.a

**Operations registered in the Trade Register, by categories
during the period of December 1990 - December 2003, in total by country and counties,
- counties' rate in total country -**

Counties	Total of registered operations		out of which :									
			Registered companies		Changes in statutory documents		out of which :				Strike off companies	
	of liquidation, dissolution						out of which :					
	No.	%	No.	%	No.	%	No.	%	No.	%	No.	%
0	1	2	3	4	5	6	7	8	9	10	11	12
Total ROMÂNIA	3455038	100,0	1119124	32,4	2131047	61,7	184906	5,4	175825	5,1	204867	5,9
ALBA	42978	100,0	16376	38,1	25886	60,2	3966	9,2	3596	8,4	716	1,7
ARAD	74692	100,0	25338	33,9	44980	60,2	3314	4,4	2974	4,0	4374	5,9
ARGES	75335	100,0	28387	37,7	45718	60,7	4262	5,7	4120	5,5	1230	1,6
BACAU	70355	100,0	28954	41,2	37628	53,5	6282	8,9	5280	7,5	3773	5,4
BIHOR	101980	100,0	32696	32,1	63352	62,1	4863	4,8	4599	4,5	5932	5,8
BISTRITA-NASAUD	38715	100,0	13628	35,2	22809	58,9	1216	3,1	1120	2,9	2278	5,9
BOTOSANI	31304	100,0	13361	42,7	16216	51,8	1635	5,2	1563	5,0	1727	5,5
BRASOV	115411	100,0	35080	30,4	74483	64,5	5017	4,3	4893	4,2	5848	5,1
BRAILA	49292	100,0	15571	31,6	33101	67,2	4583	9,3	4509	9,1	620	1,3
BUZAU	64295	100,0	20851	32,4	40153	62,5	2247	3,5	2109	3,3	3291	5,1
CARAS-SEVERIN	40062	100,0	14028	35,0	23078	57,6	1937	4,8	1922	4,8	2956	7,4
CALARASI	30935	100,0	11924	38,5	17176	55,5	76	0,2			1835	5,9
CLUJ	128019	100,0	48207	37,7	77767	60,7	8277	6,5	8113	6,3	2045	1,6
CONSTANTA	151849	100,0	48229	31,8	91067	60,0	11581	7,6	10621	7,0	12553	8,3
COVASNA	30319	100,0	9677	31,9	19055	62,8	1187	3,9	1175	3,9	1587	5,2
DAMBOVITA	54663	100,0	21875	40,0	27764	50,8	3029	5,5	2951	5,4	5024	9,2
DOLJ	82936	100,0	30001	36,2	46056	55,5	5861	7,1	5634	6,8	6879	8,3
GALATI	97187	100,0	27207	28,0	63153	65,0	5493	5,7	5346	5,5	6827	7,0
GIURGIU	23411	100,0	9273	39,6	11747	50,2	30	0,1			2391	10,2
GORJ	46427	100,0	14119	30,4	29049	62,6	2716	5,9	2667	5,7	3259	7,0
HARGHITA	42377	100,0	14976	35,3	26795	63,2	65	0,2			606	1,4
HUNEDOARA	60645	100,0	23465	38,7	33256	54,8	3065	5,1	2944	4,9	3924	6,5
IALOMITA	34116	100,0	11337	33,2	20523	60,2	1698	5,0	1586	4,6	2256	6,6
IASI	117572	100,0	33316	28,3	80098	68,1	4801	4,1	4224	3,6	4158	3,5
MARAMURES	78798	100,0	29938	38,0	45579	57,8	2962	3,8	2924	3,7	3281	4,2
MEHEDINTI	36898	100,0	13380	36,3	19812	53,7	3136	8,5	3085	8,4	3706	10,0
MURES	78943	100,0	27854	35,3	47313	59,9	3081	3,9	2944	3,7	3776	4,8
NEAMT	62632	100,0	25111	40,1	33718	53,8	2748	4,4	2435	3,9	3803	6,1
OLT	45958	100,0	17134	37,3	25564	55,6	2108	4,6	2033	4,4	3260	7,1
PRAHOVA	128190	100,0	36376	28,4	85287	66,5	4195	3,3	3935	3,1	6527	5,1
SALAJ	22643	100,0	9479	41,9	12061	53,3	689	3,0	683	3,0	1103	4,9
SATU MARE	53964	100,0	18194	33,7	32254	59,8	2946	5,5	2934	5,4	3516	6,5
SIBIU	77611	100,0	20222	26,1	54072	69,7	2605	3,4	2583	3,3	3317	4,3
SUCEAVA	76628	100,0	29859	39,0	42988	56,1	2392	3,1	2387	3,1	3781	4,9
TELEORMAN	41146	100,0	13297	32,3	27377	66,5	1541	3,7	1508	3,7	472	1,1
TIMIS	142016	100,0	35994	25,3	97592	68,7	7541	5,3	7273	5,1	8430	5,9
TULCEA	33618	100,0	12247	36,4	19650	58,5	1171	3,5	1003	3,0	1721	5,1
VASLUI	39501	100,0	14471	36,6	22751	57,6	1588	4,0	1386	3,5	2279	5,8
VALCEA	57162	100,0	19152	33,5	35052	61,3	2063	3,6	1888	3,3	2958	5,2
VRANCEA	39268	100,0	13655	34,8	24830	63,2	1706	4,3	1593	4,1	783	2,0
MUN. BUCURESTI	802279	100,0	219322	27,3	519089	64,7	53339	6,6	51406	6,4	63868	8,0
ILFOV	32908	100,0	15563	47,3	15148	46,0	1894	5,8	1879	5,7	2197	6,7

*) according to the effect of Law No. 314/2001, art.1 și art. 6

*** Less than 0,01%

Table no. 2

**Status of reissuing the incorporation certificate by exchange of the
registration certificate, the 31 of December 2003**

County	Companies having to request exchange of certificate		Companies having operated the change of certification up to 31.12.2003		Holders of new registration certificates containing the unique registration code
	Number	%	Number	%	%
0	1	2	3	4	5
Total of ROMÂNIA	667582	100,0	298462	100,0	58,0
ALBA	9004	1,3	4036	1,4	63,3
ARAD	15212	2,3	5933	2,0	53,4
ARGES	17213	2,6	8684	2,9	61,3
BACAU	20409	3,1	7867	2,6	49,2
BIHOR	19826	3,0	9659	3,2	60,9
BISTRITA-NASAUD	8898	1,3	4025	1,3	55,9
BOTOSANI	8695	1,3	3395	1,1	54,5
BRASOV	21675	3,2	12350	4,1	67,5
BRAILA	8700	1,3	4856	1,6	67,4
BUZAU	13145	2,0	5925	2,0	58,2
CARAS-SEVERIN	9192	1,4	3559	1,2	49,9
CALARASI	8012	1,2	3366	1,1	52,2
CLUJ	27071	4,1	12238	4,1	60,3
CONSTANTA	24404	3,7	12822	4,3	66,8
COVASNA	6176	0,9	3611	1,2	67,3
DAMBOVITA	13114	2,0	5282	1,8	52,9
DOLJ	16525	2,5	4025	1,3	45,0
GALATI	15605	2,3	7348	2,5	60,4
GIURGIU	4758	0,7	1779	0,6	54,2
GORJ	7130	1,1	3119	1,0	61,7
HARGHITA	7815	1,2	3700	1,2	66,7
HUNEDOARA	15137	2,3	6555	2,2	54,4
IALOMITA	6845	1,0	2733	0,9	54,4
IASI	21985	3,3	9141	3,1	54,7
MARAMURES	22028	3,3	10488	3,5	55,7
MEHEDINTI	7769	1,2	2788	0,9	49,4
MURES	18029	2,7	6918	2,3	53,0
NEAMT	15620	2,3	5810	1,9	53,2
OLT	10818	1,6	4667	1,6	55,2
PRAHOVA	22555	3,4	11290	3,8	61,2
SALAJ	5260	0,8	2705	0,9	68,6
SATU MARE	10986	1,6	4285	1,4	53,1
SIBIU	12123	1,8	6326	2,1	65,2
SUCEAVA	21498	3,2	7483	2,5	46,1
TELEORMAN	9114	1,4	4086	1,4	54,9
TIMIS	20384	3,1	10239	3,4	62,7
TULCEA	8534	1,3	3209	1,1	49,2
VASLUI	8710	1,3	3419	1,1	54,3
VALCEA	11114	1,7	5542	1,9	64,5
VRANCEA	7640	1,1	3531	1,2	62,8
MUN. BUCURESTI	121569	18,2	56244	18,8	59,0
ILFOV	7285	1,1	3424	1,1	64,6

Note: Figures in column 1 are being issued in accordance with the methodological note.

*** Sub 0,01%

The percentage in the 5 th column represents the number of companies holding the new registration certificates containing the unique registration code divided by the total number of companies being registered the trade register

Table no.3

Number and structure of incorporations in the Trade Register, by years, during the period of December 1990 - December 2003

Period (year, month)	Registered companies		Percentage	
	No.	%	%	
0	1	2	3	
Total, 31 July 2002,	1119124	100,00		
out of which				
Year 1990	81	0,01		
Year 1991	95840	8,56		
Year 1992	137456	12,28		
Year 1993	117078	10,46		
Year 1994	137445	12,28		
Year 1995	65479	5,85		
Year 1996	62089	5,55		
Year 1997	55663	4,97		
Year 1998	63878	5,71		
Year 1999	57197	5,11		
Year 2000	57291	5,12		
Year 2001	61265	5,47		
Year 2002	84780	7,58		
Year 2003 (1.I - 31.VII),	123582	11,04	100,0	
out of which :				
January	6706			5,4
February	8659			7,0
March	8168			6,6
April	8667			7,0
May	8427			6,8
June	10496			8,5
July	10633			8,60
- august	9179			7,43
- septembrie	9392			7,60
- octombrie	12331			9,98
- noiembrie	16860			13,64
- decembrie	14064			11,38

Diagram no.1

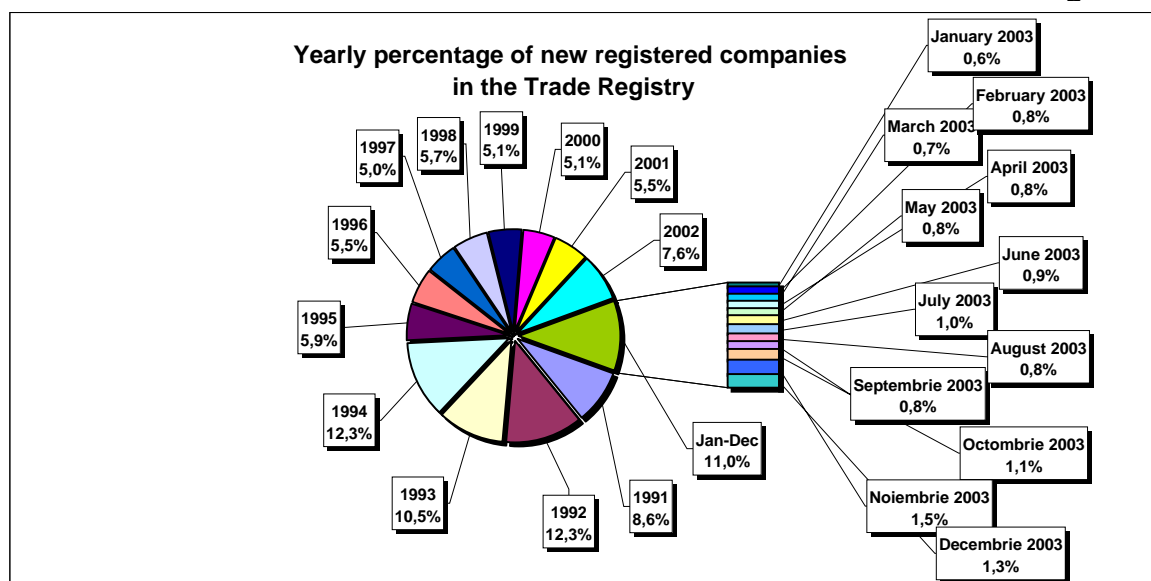


Table no. 4

The number of incorporations in the Trade Register, by counties and sources of capital, in the period December 1990 - December 2003

Counties	Total		out of which:					Ranking by: *	
			Private capital			State majority capital			Mixed capital (state+private)
			out of which:			out of which:			
			PF+AF	Companies	OC	RA	Companies		Companies
No.	%	No.	No.	No.	No.	No.	No.		
0	1	2	3	4	5	6	7	8	9
Total ROMÂNIA	1119124	100,0	239876	861829	5347	1272	2294	8506	X
ALBA	16376	1,5	4606	11390	141	31	38	170	25
ARAD	25339	2,3	8810	15975	156	26	40	332	16
ARGES	28387	2,5	8154	19856	168	29	29	151	13
BACAU	28954	2,6	9298	19201	158	32	42	223	12
BIHOR	32696	2,9	4566	27587	144	31	62	306	8
BISTRITA-NASAUD	13628	1,2	4399	8975	98	18	29	109	33
BOTOSANI	13361	1,2	5023	7907	121	21	170	119	35
BRASOV	35080	3,1	6012	28671	114	36	83	164	6
BRAILA	15571	1,4	2739	12503	95	26	43	165	26
BUZAU	20851	1,9	4669	15843	142	25	42	130	20
CARAS-SEVERIN	14028	1,3	4784	8907	102	33	65	137	31
CALARASI	11924	1,1	3046	8607	86	17	75	93	38
CLUJ	48207	4,3	8799	38907	150	50	40	261	3
CONSTANTA	48229	4,3	7096	40303	202	48	45	535	2
COVASNA	9677	0,9	2582	6864	67	23	32	109	40
DAMBOVITA	21875	2,0	10100	11386	134	29	75	151	19
DOLJ	30001	2,7	4308	25238	161	39	54	201	9
GALATI	27207	2,4	3994	22857	134	28	51	143	15
GIURGIU	9273	0,8	1584	7370	80	20	109	110	42
GORJ	14119	1,3	2444	11262	184	50	79	100	30
HARGHITA	14976	1,3	4288	10322	85	23	30	228	28
HUNEDOARA	23465	2,1	5605	17371	81	37	91	280	18
IALOMITA	11337	1,0	4143	6970	74	15	46	89	39
IASI	33316	3,0	8068	24643	160	32	69	344	7
MARAMURES	29938	2,7	12345	17278	120	34	39	122	10
MEHEDINTI	13380	1,2	3308	9848	82	18	26	98	34
MURES	27854	2,5	9687	17784	154	29	33	167	14
NEAMT	25111	2,2	8362	16371	154	29	30	165	17
OLT	17134	1,5	6516	10246	161	26	62	123	24
PRAHOVA	36376	3,3	9124	26701	177	49	62	263	4
SALAJ	9479	0,8	3005	6261	107	18	27	61	41
SATU MARE	18194	1,6	4681	13233	88	18	40	134	23
SIBIU	20222	1,8	3340	16475	116	26	108	157	21
SUCEAVA	29859	2,7	13812	15537	201	28	61	220	11
TELEORMAN	13297	1,2	3954	8955	151	21	38	178	36
TIMIS	35994	3,2	2943	32463	140	36	68	344	5
TULCEA	12247	1,1	3423	8486	66	18	42	212	37
VASLUI	14471	1,3	6744	7426	109	16	41	135	29
VALCEA	19152	1,7	6984	11810	168	40	37	113	22
VRANCEA	13655	1,2	3179	10217	103	16	27	113	32
MUN. BUCURESTI	219321	19,6	7777	210093	138	111	102	1100	1
ILFOV	15563	1,4	1575	13730	75	20	12	151	27

*) The total number of incorporations (col 1)

*** Less than 0,01%

Table no. 5

**The number of incorporations in the Trade Register,
by counties and categories, during the period of
December 1990 - December 2003**

County	Total		out of which:						RA	OC
			PF+AF	companies: 872629						
	No.	%		No.	SNC	SCS	SRL	SA	No.	No.
			No.		No.	No.	No.			
0	1	2	3	4	5	6	7	8	9	
Total ROMÂNIA	1119124	100,0	239876	32576	1535	809098	29415	1272	5347	
ALBA	16376	1,5	4606	888	11	10179	520	31	141	
ARAD	25338	2,3	8810	48	5	15668	624	26	156	
ARGES	28387	2,5	8154	107	13	19161	755	29	168	
BACAU	28954	2,6	9298	1299	4	17500	662	32	158	
BIHOR	32696	2,9	4566	125	47	26933	850	31	144	
BISTRITA-NASAUD	13628	1,2	4399	146	20	8563	384	18	98	
BOTOSANI	13361	1,2	5023	468	1	7303	424	21	121	
BRASOV	35080	3,1	6012	239	19	27914	746	36	114	
BRAILA	15571	1,4	2739	376	12	11837	486	26	95	
BUZAU	20851	1,9	4669	3746	46	11693	530	25	142	
CARAS-SEVERIN	14028	1,3	4784	113	7	8549	440	33	102	
CALARASI	11924	1,1	3046	609	3	7833	330	17	86	
CLUJ	48207	4,3	8799	2107	18	35988	1095	50	150	
CONSTANTA	48229	4,3	7096	311	23	39171	1378	48	202	
COVASNA	9677	0,9	2582	148	3	6574	280	23	67	
DAMBOVITA	21875	2,0	10100	60	8	11088	456	29	134	
DOLJ	30001	2,7	4308	1558	8	23124	803	39	161	
GALATI	27207	2,4	3994	1574	6	20728	743	28	134	
GIURGIU	9273	0,8	1584	35	8	7238	308	20	80	
GORJ	14119	1,3	2444	28	1	10964	448	50	184	
HARGHITA	14976	1,3	4288	62	6	10053	459	23	85	
HUNEDOARA	23465	2,1	5605	1165	98	15877	602	37	81	
IALOMITA	11337	1,0	4143	266	11	6509	319	15	74	
IASI	33316	3,0	8068	505	111	23509	929	32	160	
MARAMURES	29938	2,7	12345	1925	23	14947	544	34	120	
MEHEDINTI	13380	1,2	3308	427	3	9243	299	18	82	
MURES	27854	2,5	9687	37	34	17297	616	29	154	
NEAMT	25111	2,2	8362	3292	30	12619	625	29	154	
OLT	17134	1,5	6516	1611	1	8353	466	26	161	
PRAHOVA	36376	3,3	9124	3118	12	23092	804	49	177	
SALAJ	9479	0,8	3005	600	4	5476	269	18	107	
SATU MARE	18194	1,6	4681	283	4	12683	437	18	88	
SIBIU	20222	1,8	3340	773	45	15321	601	26	116	
SUCEAVA	29859	2,7	13812	438	8	14835	537	28	201	
TELEORMAN	13297	1,2	3954	272	399	8105	395	21	151	
TIMIS	35994	3,2	2943	581	24	31108	1162	36	140	
TULCEA	12247	1,1	3423	1362	112	6810	456	18	66	
VASLUI	14471	1,3	6744	90	11	7119	382	16	109	
VALCEA	19152	1,7	6984	363	5	11154	438	40	168	
VRANCEA	13655	1,2	3179	356	9	9568	424	16	103	
MUN. BUCURESTI	219322	19,6	7777	1018	294	204084	5899	111	138	
ILFOV	15563	1,4	1575	47	28	13328	490	20	75	

Table no. 6

**The number of incorporations in the Trade Register, by field of activity*
during the period of December 1990 - December 2003**

CAEN segment	Field of activity	Total		out of which:						
				PF+AF	companies: 872629				RA	OC
					SNC	SCS	SRI	SA		
					No.	No.	No.	No.		
0	1	2	3	4	5	6	7	8	9	10
	Total ROMÂNIA	1119124	100,0	239876	32576	1535	809098	29415	1272	5347
1	Agriculture, hunting and related service activities	44427	4,0	4621	2023	44	33865	3720	37	117
2	Forestry, logging and related service activities	5971	0,5	657	152	3	4888	215	48	8
5	Fishing, fish farming and related service activities	1446	0,1	614	17	3	760	52		
10	Mining of coal and lignite; extraction of peat	68	0,0	1			49	14	4	
11	Extraction of crude petroleum and natural gas; service activities incidental to oil and gas extraction, excluding surveying	275	0,0	2	1		112	114	46	
12	Mining of uranium and thorium ores	133	0,0	32			95	6		
13	Mining of metal ores	511	0,0	162			288	53	8	
14	Other mining and quarrying	1082	0,1	88	9	1	826	155	2	1
15	Manufacture of food products and beverages	64772	5,8	9712	3260	149	49612	1786	5	248
16	Manufacture of tobacco products	275	0,0	47			196	31	1	
17	Manufacture of textiles	10219	0,9	1796	556	16	7308	399		144
18	Manufacture of wearing apparel; dressing and tanning of fur	17153	1,5	3339	875	37	12251	346	1	304
19	Tanning and dressing of leather; manufacture of luggage, handbags, saddlery, harness and footwear	4264	0,4	613	112	6	3362	119	1	51
20	Manufacture of wood and of products of wood and cork, except furniture; manufacture of articles of straw and plaiting materials	17215	1,5	4239	574	28	11847	476	9	42
21	Manufacture of pulp, paper and paper products	1400	0,1	72	21	1	1198	95		13
22	Publishing, printing and reproduction of recorded media	9249	0,8	695	317	21	7810	382	14	10
23	Manufacture of coke, refined petroleum products and nuclear fuel	225	0,0	21			170	32	2	
24	Manufacture of chemicals and chemical products	3283	0,3	91	89	1	2726	364	6	6
25	Manufacture of rubber and plastic products	4758	0,4	428	313	7	3733	252		24
26	Manufacture of other non-metallic mineral products	5939	0,5	1279	212	6	4064	360	5	13
27	Manufacture of basic metals	2223	0,2	139	39	3	1832	200	3	7
28	Manufacture of fabricated metal products, except machinery and equipment	11039	1,0	1594	361	22	8303	686	11	62
29	Manufacture of machinery and equipment n.e.c.	3136	0,3	66	44	7	2592	403	19	5
30	Manufacture of office machinery and computers	1587	0,1	12	25	3	1467	80		
31	Manufacture of electrical machinery and apparatus n.e.c.	1597	0,1	88	44	6	1314	139		6
32	Manufacture of radio, television and communication equipment and apparatus	714	0,1	25	14	4	600	70		1
33	Manufacture of medical, precision and optical instruments, watches and clocks	1707	0,2	331	16	2	1264	90		4
34	Manufacture of motor vehicles, trailers and semi-trailers	749	0,1	20	31	3	574	119		2
35	Manufacture of other transport equipment	1407	0,1	174	86	7	951	114	73	2
36	Manufacture of furniture; manufacturing n.e.c.	10785	1,0	2432	284	15	7578	314	5	157
37	Recycling	3411	0,3	293	51	5	2897	164		1
40	Electricity, gas, steam and hot water supply	2662	0,2	831	3	1	1279	460	88	
41	Collection, purification and distribution of water	3439	0,3	1603	2		1600	161	73	
45	Construction	46992	4,2	8776	609	41	35192	2244	53	77

Table no. 6
(continuing)

**The number of incorporations in the Trade Register, by field of activity*
and categories, during the period of
December 1990 - December 2003**

CAEN segment	Field of activity	Total		out of which:						
				PF+AF	companies: 872629				RA	OC
		SNC	SCS		SRL	SA				
		No.	%	No.	No.	No.	No.	No.	No.	No.
0	1	2	3	4	5	6	7	8	9	10
	Total ROMÂNIA	1119124	100,0	239876	32576	1535	809098	29415	1272	5347
50	Sale, maintenance and repair of motor vehicles and motorcycles; retail sale of automotive fuel	42124	3,8	4569	1242		35220	1012	5	42
51	Wholesale trade and commission trade, except of motor vehicles and motorcycles	161905	14,5	10427	4523	147	143374	3118	35	281
52	Retail trade, except of motor vehicles and motorcycles; repair of personal and household goods	397416	35,5	126934	11908	556	253220	2442	5	2350
55	Hotels and restaurants	42614	3,8	9827	1634	126	30157	702	73	95
60	Land transport: transport via pipelines	48366	4,3	17938	843	35	28490	1017	33	10
61	Water transport	722	0,1	117	82	8	384	60	70	1
62	Air transport	260	0,0	17			191	42	10	
63	Supporting and auxiliary transport activities; activities of travel agencies	7134	0,6	343	220	14	6039	413	95	10
64	Post and telecommunications	3790	0,3	187	11	1	3307	270	11	3
65	Financial intermediation, except insurance and pension funding	4646	0,4	131	15		1662	1808	2	1028
66	Insurance and pension funding, except compulsory social security	1860	0,2	567	1		487	804		1
67	Activities auxiliary to financial intermediation	3645	0,3	666	6	2	2709	254		8
70	Real estate activities	8488	0,8	338	28	6	7679	414	17	6
71	Renting of machinery and equipment without operator and of personal and household goods	2058	0,2	366	116	8	1408	89	70	1
72	Computer and related activities	12119	1,1	1284	115	12	10362	341	2	3
73	Research and development	1274	0,1	172	11	2	890	154	43	2
74	Other business activities	54092	4,8	9692	745	63	41975	1451	106	59
75	Public administration and defence; compulsory social security	320	0,0	71	5		202	23	18	1
80	Education	4193	0,4	2114	62	5	1950	62		
85	Health and social work	11274	1,0	1768	233	15	9180	74	3	1
90	Sewage and refuse disposal, sanitation and similar activities	499	0,0	39	13	2	340	86	18	
91	Activities of membership organizations n.e.c.	173	0,0	67	1		89	13		3
92	Recreational, cultural and sporting activities	9153	0,8	1557	199	14	7064	241	66	12
93	Other service activities	16443	1,5	5618	417	42	9860	305	76	124
95	Activities of households as employers of domestic staff	390	0,0	144	6	1	235	3		1
99	Extra-territorial organizations and bodies	53	0,0	30			21	2		

Table no. 7

**Operations carried on with the Trade Registers,
by counties and categories,
in December 2003**

County	Total of operations carried on		out of which:							
			New incorporations		Changes in statutory documents		out of which: of liquidation, dissolution		Strike off companies	
	No.	%	No.	%	No.	%	No.	%	No.	%
0	1	2	3	4	5	6	7	8	9	10
Total ROMÂNIA	40009	100,0	14064	35,2	24678	61,7	182	0,5	1267	3,2
ALBA	697	100,0	371	53,2	309	44,3	1	0,1	17	2,4
ARAD	833	100,0	319	38,3	492	59,1	4	0,5	22	2,6
ARGES	1634	100,0	458	28,0	1154	70,6	6	0,4	22	1,3
BACAU	948	100,0	300	31,6	619	65,3			29	3,1
BIHOR	1119	100,0	388	34,7	677	60,5	13	1,2	54	4,8
BISTRITA-NASAUD	441	100,0	158	35,8	251	56,9	4	0,9	32	7,3
BOTOSANI	478	100,0	211	44,1	239	50,0			28	5,9
BRASOV	965	100,0	433	44,9	530	54,9	2	0,2	2	0,2
BRAILA	455	100,0	263	57,8	169	37,1	2	0,4	23	5,1
BUZAU	614	100,0	253	41,2	336	54,7			25	4,1
CARAS-SEVERIN	425	100,0	139	32,7	275	64,7			11	2,6
CALARASI	278	100,0	114	41,0	159	57,2			5	1,8
CLUJ	1655	100,0	693	41,9	919	55,5	3	0,2	43	2,6
CONSTANTA	1897	100,0	640	33,7	1206	63,6	21	1,1	51	2,7
COVASNA	384	100,0	151	39,3	229	59,6	1	0,3	4	1,0
DAMBOVITA	685	100,0	195	28,5	442	64,5	1	0,1	48	7,0
DOLJ	767	100,0	346	45,1	393	51,2	2	0,3	28	3,7
GALATI	937	100,0	250	26,7	623	66,5	6	0,6	64	6,8
GIURGIU	354	100,0	132	37,3	199	56,2	2	0,6	23	6,5
GORJ	646	100,0	170	26,3	460	71,2	1	0,2	16	2,5
HARGHITA	1881	100,0	568	30,2	1276	67,8	3	0,2	37	2,0
HUNEDOARA	573	100,0	253	44,2	308	53,8	2	0,3	12	2,1
IALOMITA	412	100,0	120	29,1	280	68,0	3	0,7	12	2,9
IASI	1443	100,0	477	33,1	953	66,0	31	2,1	13	0,9
MARAMURES	550	100,0	171	31,1	349	63,5	1	0,2	30	5,5
MEHEDINTI	298	100,0	96	32,2	189	63,4	3	1,0	13	4,4
MURES	1170	100,0	322	27,5	835	71,4	9	0,8	13	1,1
NEAMT	1281	100,0	537	41,9	682	53,2	5	0,4	62	4,8
OLT	475	100,0	116	24,4	341	71,8	3	0,6	18	3,8
PRAHOVA	1478	100,0	530	35,9	917	62,0	3	0,2	31	2,1
SALAJ	301	100,0	152	50,5	137	45,5			12	4,0
SATU MARE	583	100,0	232	39,8	335	57,5	1	0,2	16	2,7
SIBIU	944	100,0	347	36,8	573	60,7			24	2,5
SUCEAVA	874	100,0	237	27,1	586	67,0			51	5,8
TELEORMAN	496	100,0	114	23,0	378	76,2	1	0,2	4	0,8
TIMIS	1028	100,0	394	38,3	621	60,4	3	0,3	13	1,3
TULCEA	232	100,0	74	31,9	146	62,9	4	1,7	12	5,2
VASLUI	649	100,0	270	41,6	252	38,8			127	19,6
VALCEA	915	100,0	228	24,9	604	66,0	2	0,2	83	9,1
VRANCEA	761	100,0	245	32,2	479	62,9	6	0,8	37	4,9
MUN. BUCURESTI	6881	100,0	2382	34,6	4421	64,2	31	0,5	78	1,1
ILFOV	572	100,0	215	37,6	335	58,6	2	0,3	22	3,8

*) by effect of implementation of Law no. 314/2001, art.1 and art. 6

*** Less than 0,01%

Table no. 8

**The number of incorporations in the Trade Register,
by counties and sources of capital,
in December 2003**

County	Total		out of which:					Ranking by: *	
			Private capital			State majority capital			Mixed capital (state+private)
			out of which:			out of which:			
			PF+AF	Companies	OC	RA	Companies		Companies
No.	%	No.	No.	No.	No.	No.	No.		
0	1	2	3	4	5	6	7	8	9
Total ROMÂNIA	14064	100,0	8166	5891	3	1	2	1	X
ALBA	371	2,6	306	65					12
ARAD	319	2,3	177	142					16
ARGES	458	3,3	305	153					8
BACAU	300	2,1	145	155					17
BIHOR	388	2,8	246	142					11
BISTRITA-NASAUD	158	1,1	89	69					32
BOTOSANI	211	1,5	164	47					28
BRASOV	433	3,1	172	260			1		9
BRAILA	263	1,9	209	54					19
BUZAU	253	1,8	165	88					20
CARAS-SEVERIN	139	1,0	74	65					35
CALARASI	114	0,8	68	46					39
CLUJ	693	4,9	440	253					2
CONSTANTA	640	4,6	374	266					3
COVASNA	151	1,1	110	41					34
DAMBOVITA	195	1,4	129	66					29
DOLJ	346	2,5	173	173					14
GALATI	250	1,8	119	131					22
GIURGIU	132	0,9	100	32					36
GORJ	170	1,2	102	68					31
HARGHITA	568	4,0	448	120					4
HUNEDOARA	253	1,8	147	106					21
IALOMITA	120	0,9	82	38					37
IASI	477	3,4	265	212					7
MARAMURES	171	1,2	84	86				1	30
MEHEDINTI	96	0,7	69	27					41
MURES	322	2,3	169	153					15
NEAMT	537	3,8	407	130					5
OLT	116	0,8	67	49					38
PRAHOVA	530	3,8	343	187					6
SALAJ	152	1,1	104	48					33
SATU MARE	232	1,6	166	66					25
SIBIU	347	2,5	232	115					13
SUCEAVA	237	1,7	110	127					24
TELEORMAN	114	0,8	72	42					40
TIMIS	394	2,8	185	209					10
TULCEA	74	0,5	29	45					42
VASLUI	270	1,9	203	67					18
VALCEA	228	1,6	170	57		1			26
VRANCEA	245	1,7	189	56					23
MUN. BUCURESTI	2382	16,9	876	1505			1		1
ILFOV	215	1,5	82	130	3				27

Table no.9

**The number of incorporations in the Trade Register,
by counties and category
in December 2003**

County	Total		out of which:						
			PF+AF	companies: 5894				RA	OC
	No.	%		No.	SNC	SCS	SRL		
			No.		No.	No.	No.	No.	No.
0	1	2	3	4	5	6	7	8	9
Total ROMÂNIA	14064	100,0	8166	3	2	5806	83	1	3
ALBA	371	2,6	306			65			
ARAD	319	2,3	177			141	1		
ARGES	458	3,3	305			150	3		
BACAU	300	2,1	145			154	1		
BIHOR	388	2,8	246			141	1		
BISTRITA-NASAUD	158	1,1	89			68	1		
BOTOSANI	211	1,5	164			47			
BRASOV	433	3,1	172			260	1		
BRAILA	263	1,9	209			54			
BUZAU	253	1,8	165			85	3		
CARAS-SEVERIN	139	1,0	74			65			
CALARASI	114	0,8	68			45	1		
CLUJ	693	4,9	440			247	6		
CONSTANTA	640	4,6	374			264	2		
COVASNA	151	1,1	110			41			
DAMBOVITA	195	1,4	129			65	1		
DOLJ	346	2,5	173			170	3		
GALATI	250	1,8	119			130	1		
GIURGIU	132	0,9	100			32			
GORJ	170	1,2	102			67	1		
HARGHITA	568	4,0	448			120			
HUNEDOARA	253	1,8	147			103	3		
IALOMITA	120	0,9	82			36	2		
IASI	477	3,4	265			212			
MARAMURES	171	1,2	84			86	1		
MEHEDINTI	96	0,7	69			26	1		
MURES	322	2,3	169			153			
NEAMT	537	3,8	407			129	1		
OLT	116	0,8	67			49			
PRAHOVA	530	3,8	343	1		184	2		
SALAJ	152	1,1	104			48			
SATU MARE	232	1,6	166			66			
SIBIU	347	2,5	232			115			
SUCEAVA	237	1,7	110			126	1		
TELEORMAN	114	0,8	72			41	1		
TIMIS	394	2,8	185	1		206	2		
TULCEA	74	0,5	29			45			
VASLUI	270	1,9	203			67			
VALCEA	228	1,6	170			56	1	1	
VRANCEA	245	1,7	189			56			
MUN. BUCURESTI	2382	16,9	876	1	2	1461	42		
ILFOV	215	1,5	82			130			3

Table no. 10

**The number of incorporations in the Trade Register, by field of activity*
and categories in December 2003**

CAEN segment	Field of activity	Total		out of which:						
				PF+AF	companies: 5894				RA	OC
		SNC	SCS		SRL	SA				
		No.	%	No.	No.	No.	No.	No.	No.	
0	1	2	3	4	5	6	7	8	9	10
	Total ROMANIA	14064	100,0	8166	3	2	5806	83	1	3
1	Agriculture, hunting and related service activities	293	2,1	183			108	2		
2	Forestry, logging and related service activities	46	0,3	8			38			
5	Fishing, fish farming and related service activities	29	0,2	20			9			
10	Mining of coal and lignite; extraction of peat	1	0,0					1		
11	Extraction of crude petroleum and natural gas; service activities incidental to oil and gas extraction, excluding surveying	3	0,0				1	2		
12	Mining of uranium and thorium ores									
13	Mining of metal ores	1	0,0				1			
14	Other mining and quarrying	5	0,0				5			
15	Manufacture of food products and beverages	365	2,6	267			98			
16	Manufacture of tobacco products	1	0,0					1		
17	Manufacture of textiles	60	0,4	31			28	1		
18	Manufacture of wearing apparel; dressing and dyeing of fur	153	1,1	99			53	1		
19	Tanning and dressing of leather; manufacture of luggage, handbags, saddlery, harness and footwear	29	0,2	13			15	1		
20	Manufacture of wood and of products of wood and cork, except furniture; manufacture of articles of straw and plaiting materials	309	2,2	224			83	2		
21	Manufacture of pulp, paper and paper products	13	0,1				13			
22	Publishing, printing and reproduction of recorded media	62	0,4	21			40	1		
23	Manufacture of coke, refined petroleum products and nuclear fuel									
24	Manufacture of chemicals and chemical products	6	0,0	1			5			
25	Manufacture of rubber and plastic products	34	0,2	7			26	1		
26	Manufacture of other non-metallic mineral products	106	0,8	73			32	1		
27	Manufacture of basic metals	4	0,0				4			
28	Manufacture of fabricated metal products, except machinery and equipment	184	1,3	111			71	2		
29	Manufacture of machinery and equipment n.e.c.	18	0,1	3			14	1		
30	Manufacture of office machinery and computers	8	0,1				8			
31	Manufacture of electrical machinery and apparatus n.e.c.	13	0,1	2			11			
32	Manufacture of radio, television and communication equipment and apparatus	7	0,0	3			1	3		
33	Manufacture of medical, precision and optical instruments, watches and clocks	60	0,4	45			14	1		
34	Manufacture of motor vehicles, trailers and semi- trailers	6	0,0	1			5			
35	Manufacture of other transport equipment	4	0,0				4			
36	Manufacture of furniture; manufacturing n.e.c.	172	1,2	91			81			
37	Recycling	20	0,1	2			18			
40	Electricity, gas, steam and hot water supply	1	0,0				1			
41	Collection, purification and distribution of water									
45	Construction	822	5,8	421		1	394	6		

Table no. 11

**Number of companies registered and the amount
of subscribed capital, by county
in December 2003**

County	Total registered companies		Subscribed capital		Average subscribed capital on company
	No.	%	mil. ROL	%	mil. ROL
0	1	2	3	4	5
Total ROMÂNIA	5894	100,0	846215,0	100,0	144,2
ALBA	65	1,1	529,1	0,1	8,3
ARAD	142	2,4	248403,0	29,4	1749,3
ARGES	153	2,6	9269,2	1,1	60,6
BACAU	155	2,6	79057,1	9,3	510,0
BIHOR	142	2,4	14314,6	1,7	100,8
BISTRITA-NASAUD	69	1,2	1049,0	0,1	15,2
BOTOSANI	47	0,8	1933,2	0,2	41,1
BRASOV	261	4,4	19525,0	2,3	75,7
BRAILA	54	0,9	180,1	0,0	3,3
BUZAU	88	1,5	82504,0	9,7	959,3
CARAS-SEVERIN	65	1,1	367,4	0,0	5,7
CALARASI	46	0,8	257,2	0,0	5,6
CLUJ	253	4,3	21934,4	2,6	86,7
CONSTANTA	266	4,5	8080,1	1,0	30,5
COVASNA	41	0,7	223,0	0,0	5,4
DAMBOVITA	66	1,1	200,0	0,0	3,1
DOLJ	173	2,9	2117,6	0,3	12,3
GALATI	131	2,2	1560,9	0,2	11,9
GIURGIU	32	0,5	659,6	0,1	20,6
GORJ	68	1,2	177,9	0,0	2,7
HARGHITA	120	2,0	1191,6	0,1	9,9
HUNEDOARA	106	1,8	1005,1	0,1	9,7
IALOMITA	38	0,6	1246,0	0,1	32,8
IASI	212	3,6	2128,5	0,3	10,1
MARAMURES	87	1,5	2810,0	0,3	32,3
MEHEDINTI	27	0,5	163,0	0,0	6,0
MURES	153	2,6	648,4	0,1	4,2
NEAMT	130	2,2	937,7	0,1	7,2
OLT	49	0,8	626,1	0,1	12,8
PRAHOVA	187	3,2	47608,5	5,6	256,0
SALAJ	48	0,8	799,3	0,1	16,7
SATU MARE	66	1,1	829,4	0,1	12,6
SIBIU	115	2,0	1006,4	0,1	8,8
SUCEAVA	127	2,2	2087,5	0,2	16,4
TELEORMAN	42	0,7	408,1	0,0	9,7
TIMIS	209	3,5	6589,1	0,8	31,5
TULCEA	45	0,8	135,1	0,0	3,0
VASLUI	67	1,1	186,0	0,0	2,8
VALCEA	57	1,0	231,0	0,0	4,1
VRANCEA	56	1,0	513,3	0,1	9,2
MUN. BUCURESTI	1506	25,6	240072,9	28,4	160,6
ILFOV	130	2,2	42649,6	5,0	328,1

Note: The average does not include filials because according to the Law no.31/1990 they are not juridical persons

*** Less than 0,01%

Table no. 12

**Number of registered companies and the amount
of subscribed capital by category,
in December 2003**

Company type	Total registered companies		Subscribed capital		Average subscribed capital on company
	No.	%	mil. ROL	%	mil. ROL
0	1	2	3	4	5
Total ROMÂNIA	5894	100,0	846215,0	100,0	144,2
SNC	3	0,1	6,0	***	2,0
SCS	2	0,0	4549,1	0,5	
SA	83	1,4	547731,2	64,7	8299,0
SRL	5806	98,5	293928,7	34,7	50,7
SCA					

Note: The average does not include filials because according to the Law no.31/1990 they are not juridical persons

*** Less than 0,01%

Diagram no.5

