



MINISTRY OF JUSTICE

THE NATIONAL TRADE REGISTER OFFICE

est. 2, Octavian Goga Blvd., Sector 3; Phone: 320.60.13; Fax: 320.58.29; Website: www.onra.ro; E-mail: onra@onra.ro

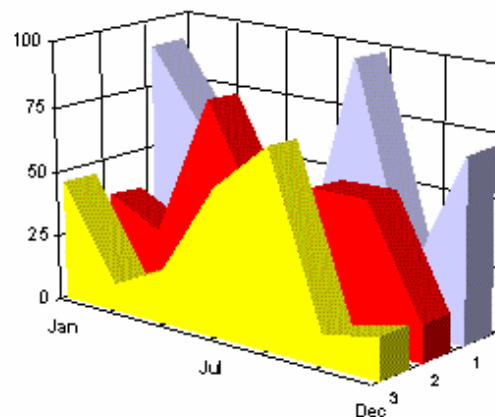
PROCEEDINGS IN THE CENTRAL TRADE REGISTER

STATISTICAL SYNTHESIS

OF

RECORDS IN THE CENTRAL TRADE REGISTER

- the 30th of September 2003 - provisional data -



- ISSUE No. 142 -

**MINISTRY OF JUSTICE
THE NATIONAL TRADE REGISTER OFFICE**

- Operations of incorporation of companies, changes in statutory documents and strike-off of companies are based on Law No.26/1990 reissued, Law No.31/1990, reissued, OUG No.76/2001, reissued and Methodology Norms No. P/608/1998.

- This paper presents the trend in operations registered in The Trade Register Office attached to the law court of Bucharest and in the Trade Register Offices attached to the law court in each county of Romania.

- Information recorded in the Central Trade Register concern operations compulsory by law to be registered in the trade registers within the 42 trade register offices attached to the law courts.

• No part of the content of this publication, in original or in any modified format, may be reproduced, stored in a retrieval system, or transmitted, in any form or by any means, without the prior permission in writing of The Ministry of Justice – The National Trade Register Office.

• The content of this publication may be referred to in articles, studies, books, as supporting or explanatory data under the condition only, the source of the information to be clearly and precisely specified.

Printed: July 2003

Contents

	Page
1 Explanatory Note	1
2.1 Data for December 1990 – September 2003	3
Table no.1 – Operations registered in the Trade Register, by categories during the period of December 1990 – September 2003, in total by country and counties, rate of categories of operations in total operations country	3
Table no.1.a – Operations registered in the Trade Register, by categories during the period of December 1990 – September 2003, in total by country and counties, counties’ rate in total country	4
Table no.2 – Status of reissuing the incorporation certificate by exchange of the registration certificate, the 30 of September 2003	5
Table no. 3 – Number and structure of incorporations in the Trade Register, by years, during the period of December 1990- September 2003	6
Table no.4 – The number of incorporations in the Trade Register, by counties and sources of capital, in the period December 1990 - September 2003	7
Table no. 5 – The number of incorporations in the Trade Register, by counties and categories, during the period of December 1990 – September 2003	8
Table no. 6 – The number of incorporations in the Trade Register, by field of activity and categories, during the period of December 1990 - September 2003	9
2.2 Data for September 2003	11
Table no. 7 – Operations carried on with the Trade Registers, by counties and categories, in September 2003	11
Table no. 8 – The number of incorporations in the Trade Register, by counties and sources of capital, in September 2003	12
Table no. 9 – The number of incorporations in the Trade Register, by counties and category in September 2003	13
Table no. 10 –The number of incorporations in the Trade Register, by field of activity and categories in September 2003	14
Table no. 11 – Number of companies registered and the amount of subscribed capital, by county in September 2003	16
Table no. 12– Number of registered companies and the amount of subscribed capital by category, in September 2003	17
Diagram no. 5 – Average subscribed capital on company in September 2003	17

Explanatory Note

The Trade Register Office is set-up by Law No. 26/1990, reissued and modified by OUG No. 129/2002, became an active institution since December 1990 and is structured in two levels:

- the national level, represented by the National Trade Register Office organised under the Ministry of Justice
- the local level, represented by the 42 trade register offices attached to the law courts and co-ordinated by the National Trade Register Office

The categories of businessmen compulsory to register in the trade register are:

- natural persons tradesmen and family associations doing usually commercial acts, commercial companies, national companies, companies under state supervision, and co-operative organisations
- subsidiaries registered as commercial companies and legal persons following the legal proceedings of set-up, activity and incorporation according to the type of the legally set-up company.

Usual Terms:

- incorporation – represents the registration of the company in the trade registry awarding the quality of legal person.

- other statutory documents – represent the official registration of the changes occurred in a company's life, such as: changes in headquarters' address, increase or decrease of the issued capital, merger, liquidation, strike-off, etc.

- strike-off – represents the removal of a company from the trade registry, due to dissolution and liquidation, being also the very moment the company loses its quality of legal person. Data also include the companies under the provisions of Law No. 314/2001.

- change of certificate – represents the obligation of companies set-up before OGU No. 76/2001 republished came in force, to request the incorporation certificate and fiscal registration certificate to be replaced with the new registration certificate containing the given unique registration code.

The ratio of these changes is being calculated as a proportion between the effective number of changes and the number of active companies due to operate the change.

- active company from the legal point of view – a company registered in the trade register and which is not affected by any of the situations leading to the temporary or permanently loss of this status (e.g. dissolution, liquidation, strike-off)

- operations represent all the records in the trade registry including incorporations, other statutory documents and strike-off of companies, irrespective of the object of activity, company's type and origin of the subscribed capital (local or foreign investment).

• **Terms used in tables and charts**

➤ **Number of companies:** represents, depending on the specific table, the number of companies incorporated in the related period, the number of companies being struck-off from the trade registry.

➤ **Amount of the subscribed capital:**

- **total, in local currency:** the amount of the subscribed capital resulted from totalising the amount subscribed (in cash and in kind) in local currency (ROL)

➤ **Regional development:**

North-East: Suceava, Botoşani, Neamţ, Iaşi, Bacău, Vaslui.

South-East: Vrancea, Galaţi, Buzău, Brăila, Tulcea, Constanţa.

South-Muntenia: Argeş, Dâmboviţa, Prahova, Teleorman, Giurgiu, Călăraşi, Ialomiţa.

South-West Oltenia: Gorj, Vâlcea, Dolj, Mehedinţi, Olt.

West: Arad, Caraş-Severin, Hunedoara, Timiş.

North-West: Bihor, Bistriţa, Cluj, Satu Mare, Sălaj, Maramureş.

Center: Alba, Braşov, Covasna, Harghita, Mureş, Sibiu.

Bucharest-Ilfov: Bucureşti, Ilfov.

CAEN code – The Classification of Activities in the National Economy was approved by HG No. 656/1997, modified by Order No 601 of the President of National Institute of Statistics being compatible with the international classification used in statistic reports and official documents. Activities are ranked upon homogeneity principle by sections, divisions, groups and classes.

Common abbreviations

- **PF** - Natural Persons Tradesman
- **AF** - Family association
- **SNC** - General Partnership
- **SCS** - Limited Partnership
- **SA** - Joint stock company
- **SRL** - Limited liability company
- **RA** - Company Under State Supervision
- **OC** - Co-operative organisation

Source:

The integrated IT system of the trade registry is designed by The National Trade Registry Office according to the provisions of the related legislation in force. The source of information is the computerised system of the trade registers handled by the Trade Register Offices attached to the law courts.

Table no. 1

**Operations registered in the Trade Register, by categories
during the period of December 1990 - September 2003, in total by country and counties,
- rate of categories of operations in total operations/country -**

Counties	Total of registered operations		out of which :								Strike off companies	
			Registered companies		Changes in statutory documents		out of which :					
	No.						%		of liquidation, dissolution		out of which :	
			*) L314/2001		No.						%	
0	1	2	3	4	5	6	7	8	9	10	11	12
Total ROMÂNIA	3312275	100,0	1075869	100,0	2042496	100,0	185152	100,0	175809	100,0	193910	100,0
ALBA	40692	1,2	15307	1,4	24711	1,2	3965	2,1	3596	2,0	674	0,3
ARAD	72133	2,2	24417	2,3	43427	2,1	3312	1,8	2974	1,7	4289	2,2
ARGES	71290	2,2	27042	2,5	43088	2,1	4253	2,3	4120	2,3	1160	0,6
BACAU	62831	1,9	28060	2,6	33352	1,6	6287	3,4	5280	3,0	1419	0,7
BIHOR	89749	2,7	31424	2,9	56878	2,8	4837	2,6	4599	2,6	1447	0,7
BISTRITA-NASAUD	37349	1,1	13154	1,2	22026	1,1	1214	0,7	1120	0,6	2169	1,1
BOTOSANI	29799	0,9	12688	1,2	15454	0,8	1634	0,9	1563	0,9	1657	0,9
BRASOV	111855	3,4	33744	3,1	72294	3,5	5021	2,7	4893	2,8	5817	3,0
BRAILA	47785	1,4	14946	1,4	32339	1,6	4577	2,5	4509	2,6	500	0,3
BUZAU	61942	1,9	19941	1,9	38837	1,9	2252	1,2	2109	1,2	3164	1,6
CARAS-SEVERIN	38766	1,2	13626	1,3	22252	1,1	1942	1,0	1922	1,1	2888	1,5
CALARASI	29999	0,9	11596	1,1	16590	0,8	75	0,0			1813	0,9
CLUJ	122664	3,7	45984	4,3	74752	3,7	8276	4,5	8113	4,6	1928	1,0
CONSTANTA	145444	4,4	46218	4,3	86825	4,3	11538	6,2	10621	6,0	12401	6,4
COVASNA	29151	0,9	9181	0,9	18399	0,9	1188	0,6	1175	0,7	1571	0,8
DAMBOVITA	52426	1,6	21299	2,0	26301	1,3	3027	1,6	2951	1,7	4826	2,5
DOLJ	80259	2,4	28860	2,7	44587	2,2	5869	3,2	5634	3,2	6812	3,5
GALATI	94054	2,8	26405	2,5	60992	3,0	5455	2,9	5346	3,0	6657	3,4
GIURGIU	22307	0,7	8818	0,8	11130	0,5	32	0,0			2359	1,2
GORJ	43801	1,3	13401	1,2	27212	1,3	2717	1,5	2667	1,5	3188	1,6
HARGHITA	37141	1,1	13256	1,2	23375	1,1	67	0,0			510	0,3
HUNEDOARA	58070	1,8	22537	2,1	31856	1,6	3054	1,6	2944	1,7	3677	1,9
IALOMITA	32679	1,0	10984	1,0	19484	1,0	1689	0,9	1586	0,9	2211	1,1
IASI	113620	3,4	31972	3,0	77534	3,8	4767	2,6	4224	2,4	4114	2,1
MARAMURES	76724	2,3	29296	2,7	44232	2,2	3086	1,7	2924	1,7	3196	1,6
MEHEDINTI	35331	1,1	13026	1,2	18641	0,9	3139	1,7	3085	1,8	3664	1,9
MURES	75280	2,3	26937	2,5	44605	2,2	3067	1,7	2944	1,7	3738	1,9
NEAMT	58840	1,8	23365	2,2	31884	1,6	2749	1,5	2435	1,4	3591	1,9
OLT	43984	1,3	16559	1,5	24240	1,2	2103	1,1	2033	1,2	3185	1,6
PRAHOVA	122997	3,7	34846	3,2	81773	4,0	4196	2,3	3935	2,2	6378	3,3
SALAJ	21176	0,6	8707	0,8	11424	0,6	721	0,4	683	0,4	1045	0,5
SATU MARE	51992	1,6	17427	1,6	31097	1,5	2927	1,6	2918	1,7	3468	1,8
SIBIU	74981	2,3	19157	1,8	52579	2,6	2600	1,4	2583	1,5	3245	1,7
SUCEAVA	74149	2,2	29268	2,7	41191	2,0	2420	1,3	2387	1,4	3690	1,9
TELEORMAN	39662	1,2	12863	1,2	26356	1,3	1550	0,8	1508	0,9	443	0,2
TIMIS	138543	4,2	34809	3,2	95337	4,7	7533	4,1	7273	4,1	8397	4,3
TULCEA	32682	1,0	11959	1,1	19047	0,9	1178	0,6	1003	0,6	1676	0,9
VASLUI	37376	1,1	13645	1,3	21882	1,1	1591	0,9	1386	0,8	1849	1,0
VALCEA	53562	1,6	18251	1,7	32631	1,6	2055	1,1	1888	1,1	2680	1,4
VRANCEA	36563	1,1	12962	1,2	22908	1,1	1702	0,9	1593	0,9	693	0,4
MUN. BUCURESTI	781425	23,6	212962	19,8	504877	24,7	53598	28,9	51406	29,2	63586	32,8
ILFOV	31202	0,9	14970	1,4	14097	0,7	1889	1,0	1879	1,1	2135	1,1

*) according to the effect of Law No. 314/2001, art.1 și art. 6

*** Less than 0,01%

Table no. 1.a

**Operations registered in the Trade Register, by categories
during the period of December 1990 - September 2003, in total by country and counties,
- counties' rate in total country -**

Counties	Total of registered operations		out of which :									
			Registered companies		Changes in statutory documents		out of which :				Strike off companies	
	of liquidation, dissolution						out of which :					
	No.	%	No.	%	No.	%	No.	%	No.	%		
0	1	2	3	4	5	6	7	8	9	10	11	12
Total ROMÂNIA	3312275	100,0	1075869	32,5	2042496	61,7	185152	5,6	175809	5,3	193910	5,9
ALBA	40692	100,0	15307	37,6	24711	60,7	3965	9,7	3596	8,8	674	1,7
ARAD	72133	100,0	24417	33,8	43427	60,2	3312	4,6	2974	4,1	4289	5,9
ARGES	71290	100,0	27042	37,9	43088	60,4	4253	6,0	4120	5,8	1160	1,6
BACAU	62831	100,0	28060	44,7	33352	53,1	6287	10,0	5280	8,4	1419	2,3
BIHOR	89749	100,0	31424	35,0	56878	63,4	4837	5,4	4599	5,1	1447	1,6
BISTRITA-NASAUD	37349	100,0	13154	35,2	22026	59,0	1214	3,3	1120	3,0	2169	5,8
BOTOSANI	29799	100,0	12688	42,6	15454	51,9	1634	5,5	1563	5,2	1657	5,6
BRASOV	111855	100,0	33744	30,2	72294	64,6	5021	4,5	4893	4,4	5817	5,2
BRAILA	47785	100,0	14946	31,3	32339	67,7	4577	9,6	4509	9,4	500	1,0
BUZAU	61942	100,0	19941	32,2	38837	62,7	2252	3,6	2109	3,4	3164	5,1
CARAS-SEVERIN	38766	100,0	13626	35,1	22252	57,4	1942	5,0	1922	5,0	2888	7,4
CALARASI	29999	100,0	11596	38,7	16590	55,3	75	0,3			1813	6,0
CLUJ	122664	100,0	45984	37,5	74752	60,9	8276	6,7	8113	6,6	1928	1,6
CONSTANTA	145444	100,0	46218	31,8	86825	59,7	11538	7,9	10621	7,3	12401	8,5
COVASNA	29151	100,0	9181	31,5	18399	63,1	1188	4,1	1175	4,0	1571	5,4
DAMBOVITA	52426	100,0	21299	40,6	26301	50,2	3027	5,8	2951	5,6	4826	9,2
DOLJ	80259	100,0	28860	36,0	44587	55,6	5869	7,3	5634	7,0	6812	8,5
GALATI	94054	100,0	26405	28,1	60992	64,8	5455	5,8	5346	5,7	6657	7,1
GIURGIU	22307	100,0	8818	39,5	11130	49,9	32	0,1			2359	10,6
GORJ	43801	100,0	13401	30,6	27212	62,1	2717	6,2	2667	6,1	3188	7,3
HARGHITA	37141	100,0	13256	35,7	23375	62,9	67	0,2			510	1,4
HUNEDOARA	58070	100,0	22537	38,8	31856	54,9	3054	5,3	2944	5,1	3677	6,3
IALOMITA	32679	100,0	10984	33,6	19484	59,6	1689	5,2	1586	4,9	2211	6,8
IASI	113620	100,0	31972	28,1	77534	68,2	4767	4,2	4224	3,7	4114	3,6
MARAMURES	76724	100,0	29296	38,2	44232	57,7	3086	4,0	2924	3,8	3196	4,2
MEHEDINTI	35331	100,0	13026	36,9	18641	52,8	3139	8,9	3085	8,7	3664	10,4
MURES	75280	100,0	26937	35,8	44605	59,3	3067	4,1	2944	3,9	3738	5,0
NEAMT	58840	100,0	23365	39,7	31884	54,2	2749	4,7	2435	4,1	3591	6,1
OLT	43984	100,0	16559	37,6	24240	55,1	2103	4,8	2033	4,6	3185	7,2
PRAHOVA	122997	100,0	34846	28,3	81773	66,5	4196	3,4	3935	3,2	6378	5,2
SALAJ	21176	100,0	8707	41,1	11424	53,9	721	3,4	683	3,2	1045	4,9
SATU MARE	51992	100,0	17427	33,5	31097	59,8	2927	5,6	2918	5,6	3468	6,7
SIBIU	74981	100,0	19157	25,5	52579	70,1	2600	3,5	2583	3,4	3245	4,3
SUCEAVA	74149	100,0	29268	39,5	41191	55,6	2420	3,3	2387	3,2	3690	5,0
TELEORMAN	39662	100,0	12863	32,4	26356	66,5	1550	3,9	1508	3,8	443	1,1
TIMIS	138543	100,0	34809	25,1	95337	68,8	7533	5,4	7273	5,2	8397	6,1
TULCEA	32682	100,0	11959	36,6	19047	58,3	1178	3,6	1003	3,1	1676	5,1
VASLUI	37376	100,0	13645	36,5	21882	58,5	1591	4,3	1386	3,7	1849	4,9
VALCEA	53562	100,0	18251	34,1	32631	60,9	2055	3,8	1888	3,5	2680	5,0
VRANCEA	36563	100,0	12962	35,5	22908	62,7	1702	4,7	1593	4,4	693	1,9
MUN. BUCURESTI	781425	100,0	212962	27,3	504877	64,6	53598	6,9	51406	6,6	63586	8,1
ILFOV	31202	100,0	14970	48,0	14097	45,2	1889	6,1	1879	6,0	2135	6,8

*) according to the effect of Law No. 314/2001, art.1 și art. 6

*** Less than 0,01%

Table no. 2

**Status of reissuing the incorporation certificate by exchange of the
registration certificate, the 30 of September 2003**

County	Companies having to request exchange of certificate		Companies having done the exchange of certificate		Exchange rate (3/1)
	Number	%	Number	%	%
0	1	2	3	4	5
Total of ROMÂNIA	676400	100,0	288754	100,0	55,4
ALBA	9051	1,3	3942	1,4	60,6
ARAD	15281	2,3	5682	2,0	51,2
ARGES	17297	2,6	8283	2,9	58,5
BACAU	22755	3,4	7337	2,5	42,5
BIHOR	24233	3,6	9186	3,2	49,8
BISTRITA-NASAUD	8985	1,3	3753	1,3	52,5
BOTOSANI	8531	1,3	3292	1,1	53,0
BRASOV	21735	3,2	11794	4,1	64,8
BRAILA	8737	1,3	4750	1,6	65,8
BUZAU	13223	2,0	5785	2,0	55,9
CARAS-SEVERIN	9228	1,4	3486	1,2	48,1
CALARASI	8025	1,2	2942	1,0	47,9
CLUJ	26950	4,0	11973	4,1	58,4
CONSTANTA	24457	3,6	12622	4,4	65,0
COVASNA	6193	0,9	3546	1,2	65,2
DAMBOVITA	13253	2,0	5181	1,8	51,4
DOLJ	16566	2,4	3953	1,4	42,7
GALATI	15651	2,3	7197	2,5	58,7
GIURGIU	4816	0,7	1634	0,6	49,7
GORJ	7200	1,1	3136	1,1	60,2
HARGHITA	7880	1,2	3632	1,3	63,0
HUNEDOARA	15164	2,2	6133	2,1	52,0
IALOMITA	6876	1,0	2668	0,9	52,6
IASI	22015	3,3	8729	3,0	52,4
MARAMURES	22112	3,3	9907	3,4	53,2
MEHEDINTI	7769	1,1	2646	0,9	46,9
MURES	18040	2,7	6513	2,3	50,3
NEAMT	15620	2,3	5535	1,9	49,5
OLT	10872	1,6	4576	1,6	53,1
PRAHOVA	22675	3,4	10814	3,7	58,4
SALAJ	5289	0,8	2483	0,9	63,7
SATU MARE	11040	1,6	4112	1,4	50,4
SIBIU	12164	1,8	6358	2,2	63,8
SUCEAVA	21535	3,2	7181	2,5	44,8
TELEORMAN	9114	1,3	3825	1,3	52,0
TIMIS	20496	3,0	10049	3,5	61,0
TULCEA	8560	1,3	3113	1,1	47,4
VASLUI	9033	1,3	3560	1,2	52,5
VALCEA	11234	1,7	5298	1,8	61,8
VRANCEA	7640	1,1	3449	1,2	60,9
MUN. BUCURESTI	121761	18,0	55352	19,2	57,5
ILFOV	7344	1,1	3347	1,2	62,6

Note: Figures in column 1 are being issued in accordance with the methodological note.

*** Sub 0,01%

Table no.3

Number and structure of incorporations in the Trade Register, by years, during the period of December 1990 - September 2003

Period (year, month)	Registered companies		Percentage	
	No.	%	%	
0	1	2	3	
Total, 31 July 2002,	1075869	100,00		
out of which				
Year 1990	81	0,01		
Year 1991	95840	8,91		
Year 1992	137456	12,78		
Year 1993	117078	10,88		
Year 1994	137445	12,78		
Year 1995	65479	6,09		
Year 1996	62089	5,77		
Year 1997	55663	5,17		
Year 1998	63878	5,94		
Year 1999	57197	5,32		
Year 2000	57291	5,33		
Year 2001	61265	5,69		
Year 2002	84780	7,88		
Year 2003 (1.I - 31.VII),	80327	7,47	100,0	
out of which :				
January	6706		8,3	
February	8659		10,8	
March	8168		10,2	
April	8667		10,8	
May	8427		10,5	
June	10496		13,1	
July	10633		13,24	
- august	9179		11,43	
- septembrie	9392		11,69	

Note: Column 2 reveals the annual structure of incorporations; column 3 reveals the structure by months during the current year.

*** Less than 0,01%

Diagram no.1

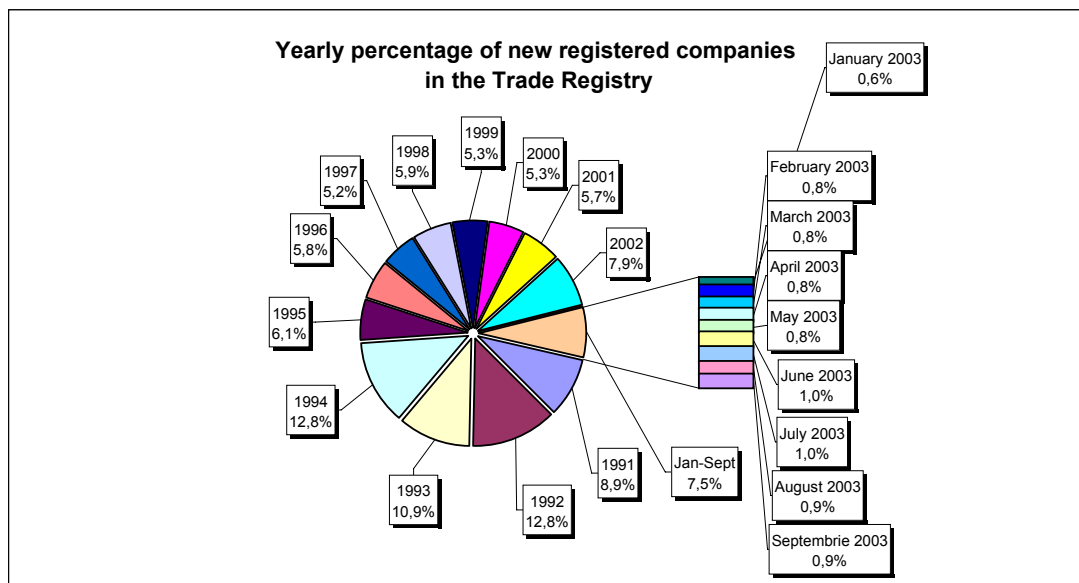


Table no. 4

The number of incorporations in the Trade Register, by counties and sources of capital, in the period December 1990 - September 2003

Counties	Total		out of which:						Ranking by: *
			Private capital			State majority capital		Mixed capital (state+private)	
			out of which:			out of which:			
			PF+AF	Companies	OC	RA	Companies	Companies	
No.	%	No.	No.	No.	No.	No.	No.		
0	1	2	3	4	5	6	7	8	9
Total ROMÂNIA	1075869	100,0	216441	842024	5342	1271	2289	8502	X
ALBA	15307	1,4	3796	11131	141	31	38	170	20
ARAD	24418	2,3	8387	15477	156	26	40	332	41
ARGES	27042	2,5	7306	19359	168	29	29	151	14
BACAU	28060	2,6	8898	18707	158	32	42	223	29
BIHOR	31424	2,9	3778	27103	144	31	62	306	31
BISTRITA-NASAUD	13154	1,2	4170	8730	98	18	29	109	39
BOTOSANI	12688	1,2	4518	7739	121	21	170	119	8
BRASOV	33744	3,1	5374	27976	114	36	80	164	42
BRAILA	14946	1,4	2321	12296	95	26	43	165	3
BUZAU	19941	1,9	4029	15573	142	25	42	130	4
CARAS-SEVERIN	13626	1,3	4631	8658	102	33	65	137	7
CALARASI	11596	1,1	2874	8451	86	17	75	93	24
CLUJ	45984	4,3	7492	37991	150	50	40	261	2
CONSTANTA	46218	4,3	5939	39449	202	48	45	535	19
COVASNA	9181	0,9	2237	6713	67	23	32	109	21
DAMBOVITA	21299	2,0	9832	11078	134	29	75	151	1
DOLJ	28860	2,7	3690	24715	161	39	54	201	17
GALATI	26405	2,5	3662	22387	134	28	51	143	33
GIURGIU	8818	0,8	1258	7241	80	20	109	110	25
GORJ	13401	1,2	1980	11008	184	50	79	100	12
HARGHITA	13256	1,2	2949	9941	85	23	30	228	27
HUNEDOARA	22537	2,1	5086	16962	81	37	91	280	40
IALOMITA	10984	1,0	3911	6849	74	15	46	89	18
IASI	31972	3,0	7341	24028	159	32	68	344	5
MARAMURES	29296	2,7	12026	16956	120	34	39	121	32
MEHEDINTI	13026	1,2	3102	9700	82	18	26	98	35
MURES	26937	2,5	9250	17304	154	29	33	167	16
NEAMT	23365	2,2	7156	15831	154	29	30	165	28
OLT	16559	1,5	6170	10017	161	26	62	123	36
PRAHOVA	34846	3,2	8151	26144	177	49	62	263	38
SALAJ	8707	0,8	2474	6020	107	18	27	61	13
SATU MARE	17427	1,6	4222	12925	88	18	40	134	22
SIBIU	19157	1,8	2689	16061	116	26	108	157	34
SUCEAVA	29268	2,7	13543	15215	201	28	61	220	30
TELEORMAN	12863	1,2	3680	8795	151	21	38	178	9
TIMIS	34809	3,2	2527	31694	140	36	68	344	6
TULCEA	11959	1,1	3257	8364	66	18	42	212	37
VASLUI	13645	1,3	6184	7160	109	16	41	135	11
VALCEA	18251	1,7	6346	11549	168	39	37	112	15
VRANCEA	12962	1,2	2697	10006	103	16	27	113	26
MUN. BUCURESTI	212961	19,8	6121	205390	138	111	101	1100	10
ILFOV	14970	1,4	1387	13331	71	20	12	149	23

*) The total number of incorporations (col 1)

*** Less than 0,01%

Table no. 5

**The number of incorporations in the Trade Register,
by counties and categories, during the period of
December 1990 - September 2003**

County	Total		out of which:						
			PF+AF	companies: 852815				RA	OC
	No.	%		SNC	SCS	SRL	SA		
			No.	No.	No.	No.	No.	No.	
0	1	2	3	4	5	6	7	8	9
Total ROMÂNIA	1075869	100,0	216441	32563	1533	789508	29206	1271	5342
ALBA	15307	1,4	3796	888	11	9920	520	31	141
ARAD	24417	2,3	8387	48	5	15172	622	26	156
ARGES	27042	2,5	7306	107	13	18670	749	29	168
BACAU	28060	2,6	8898	1299	4	17010	658	32	158
BIHOR	31424	2,9	3778	125	47	26451	848	31	144
BISTRITA-NASAUD	13154	1,2	4170	146	20	8320	382	18	98
BOTOSANI	12688	1,2	4518	468	1	7135	424	21	121
BRASOV	33744	3,1	5374	239	19	27223	739	36	114
BRAILA	14946	1,4	2321	376	12	11630	486	26	95
BUZAU	19941	1,9	4029	3745	46	11428	526	25	142
CARAS-SEVERIN	13626	1,3	4631	113	7	8301	439	33	102
CALARASI	11596	1,1	2874	609	3	7678	329	17	86
CLUJ	45984	4,3	7492	2106	18	35087	1081	50	150
CONSTANTA	46218	4,3	5939	311	23	38328	1367	48	202
COVASNA	9181	0,9	2237	148	3	6424	279	23	67
DAMBOVITA	21299	2,0	9832	60	8	10781	455	29	134
DOLJ	28860	2,7	3690	1557	8	22609	796	39	161
GALATI	26405	2,5	3662	1574	6	20263	738	28	134
GIURGIU	8818	0,8	1258	35	8	7109	308	20	80
GORJ	13401	1,2	1980	28	1	10713	445	50	184
HARGHITA	13256	1,2	2949	62	6	9674	457	23	85
HUNEDOARA	22537	2,1	5086	1165	98	15472	598	37	81
IALOMITA	10984	1,0	3911	266	11	6390	317	15	74
IASI	31972	3,0	7341	505	111	22900	922	32	159
MARAMURES	29296	2,7	12026	1925	23	14625	543	34	120
MEHEDINTI	13026	1,2	3102	427	3	9097	297	18	82
MURES	26937	2,5	9250	37	34	16820	613	29	154
NEAMT	23365	2,2	7156	3292	30	12082	622	29	154
OLT	16559	1,5	6170	1611	1	8125	465	26	161
PRAHOVA	34846	3,2	8151	3117	12	22542	798	49	177
SALAJ	8707	0,8	2474	600	4	5236	268	18	107
SATU MARE	17427	1,6	4222	283	4	12375	437	18	88
SIBIU	19157	1,8	2689	772	45	14913	596	26	116
SUCEAVA	29268	2,7	13543	438	8	14517	533	28	201
TELEORMAN	12863	1,2	3680	272	399	7947	393	21	151
TIMIS	34809	3,2	2527	577	24	30347	1158	36	140
TULCEA	11959	1,1	3257	1361	112	6689	456	18	66
VASLUI	13645	1,3	6184	90	11	6853	382	16	109
VALCEA	18251	1,7	6346	363	5	10897	433	39	168
VRANCEA	12962	1,2	2697	356	9	9357	424	16	103
MUN. BUCURESTI	212962	19,8	6121	1016	292	199465	5818	111	138
ILFOV	14970	1,4	1387	46	28	12933	485	20	71

Table no. 6

The number of incorporations in the Trade Register, by field of activity*
during the period of December 1990 - September 2003

CAEN segment	Field of activity	Total		out of which:						
				PF+AF	companies: 852815				RA	OC
		No.	%		No.	SNC	SCS	SRL		
				No.		No.	No.	No.	No.	No.
0	1	2	3	4	5	6	7	8	9	10
	Total ROMÂNIA	1075869	100,0	216441	32563	1533	789508	29206	1271	5342
1	Agriculture, hunting and related service activities	43500	4,0	4011	2023	44	33555	3713	37	117
2	Forestry, logging and related service activities	5805	0,5	630	152	3	4749	215	48	8
5	Fishing, fish farming and related service activities	1313	0,1	501	17	3	740	52		
10	Mining of coal and lignite; extraction of peat	67	0,0	1			49	13	4	
11	Extraction of crude petroleum and natural gas; service activities incidental to oil and gas extraction, excluding surveying	270	0,0	2	1		109	112	46	
12	Mining of uranium and thorium ores	133	0,0	32			95	6		
13	Mining of metal ores	510	0,0	162			287	53	8	
14	Other mining and quarrying	1054	0,1	83	9	1	805	153	2	1
15	Manufacture of food products and beverages	63463	5,9	8811	3260	149	49209	1781	5	248
16	Manufacture of tobacco products	274	0,0	47			196	30	1	
17	Manufacture of textiles	10035	0,9	1692	556	16	7230	397		144
18	Manufacture of wearing apparel; dressing and dyeing of fur	16644	1,5	3032	874	37	12051	345	1	304
19	Tanning and dressing of leather; manufacture of luggage, handbags, saddlery, harness and footwear	4154	0,4	582	112	6	3285	117	1	51
20	Manufacture of wood and of products of wood and cork, except furniture; manufacture of articles of straw and plaiting materials	16337	1,5	3650	574	28	11561	473	9	42
21	Manufacture of pulp, paper and paper products	1359	0,1	67	21	1	1162	95		13
22	Publishing, printing and reproduction of recorded media	9029	0,8	639	317	21	7650	378	14	10
23	Manufacture of coke, refined petroleum products and nuclear fuel	221	0,0	21			166	32	2	
24	Manufacture of chemicals and chemical products	3252	0,3	88	89	1	2699	363	6	6
25	Manufacture of rubber and plastic products	4661	0,4	409	313	7	3657	250		24
26	Manufacture of other non-metallic mineral products	5525	0,5	971	212	6	3961	357	5	13
27	Manufacture of basic metals	2207	0,2	139	39	3	1818	198	3	7
28	Manufacture of fabricated metal products, except machinery and equipment	10534	1,0	1303	361	22	8094	681	11	62
29	Manufacture of machinery and equipment n.e.c.	3086	0,3	59	44	7	2550	402	19	5
30	Manufacture of office machinery and computers	1569	0,1	12	25	3	1449	80		
31	Manufacture of electrical machinery and apparatus n.e.c.	1570	0,1	83	44	6	1292	139		6
32	Manufacture of radio, television and communication equipment and apparatus	701	0,1	22	14	3	591	70		1
33	Manufacture of medical, precision and optical instruments, watches and clocks	1568	0,1	236	16	2	1222	88		4
34	Manufacture of motor vehicles, trailers and semi-trailers	734	0,1	18	31	3	562	118		2
35	Manufacture of other transport equipment	1386	0,1	174	86	7	930	114	73	2
36	Manufacture of furniture; manufacturing n.e.c.	10286	1,0	2177	284	15	7334	314	5	157
37	Recycling	3324	0,3	284	51	5	2820	163		1
40	Electricity, gas, steam and hot water supply	2654	0,2	829	3	1	1273	460	88	
41	Collection, purification and distribution of water	3438	0,3	1602	2		1600	161	73	
45	Construction	44540	4,1	7514	608	41	34018	2229	53	77

Table no. 6
(continuing)

**The number of incorporations in the Trade Register, by field of activity*
and categories, during the period of
December 1990 - September 2003**

CAEN segment	Field of activity	Total		out of which:						
				PF+AF	companies: 852815				RA	OC
					SNC	SCS	SRL	SA		
					No.	No.	No.	No.		
0	1	2	3	4	5	6	7	8	9	10
	Total ROMANIA	1075869	100,0	216441	32563	1533	789508	29206	1271	5342
50	Sale, maintenance and repair of motor vehicles and motorcycles; retail sale of automotive fuel	40956	3,8	3949	1242		34675	1009	5	42
51	Wholesale trade and commission trade, except of motor vehicles and motorcycles	159015	14,8	9929	4523	147	141001	3099	35	281
52	Retail trade, except of motor vehicles and motorcycles; repair of personal and household goods	385462	35,8	119971	11905	555	248243	2437	5	2345
55	Hotels and restaurants	41279	3,8	9367	1634	126	29288	696	73	95
60	Land transport; transport via pipelines	41781	3,9	12362	843	35	27486	1012	33	10
61	Water transport	715	0,1	116	82	8	378	60	70	1
62	Air transport	257	0,0	17			188	42	10	
63	Supporting and auxiliary transport activities; activities of travel agencies	6899	0,6	320	220	14	5828	412	95	10
64	Post and telecommunications	3568	0,3	163	11	1	3109	270	11	3
65	Financial intermediation, except insurance and pension funding	4496	0,4	127	15		1547	1777	2	1028
66	Insurance and pension funding, except compulsory social security	1828	0,2	546	1		485	795		1
67	Activities auxiliary to financial intermediation	3310	0,3	530	6	2	2513	251		8
70	Real estate activities	7764	0,7	301	28	6	7012	394	17	6
71	Renting of machinery and equipment without operator and of personal and household goods	1936	0,2	308	116	8	1347	86	70	1
72	Computer and related activities	11314	1,1	1086	114	12	9759	338	2	3
73	Research and development	1234	0,1	162	11	2	861	154	42	2
74	Other business activities	49247	4,6	7778	740	63	39075	1425	106	59
75	Public administration and defence; compulsory social security	307	0,0	60	5		200	23	18	1
80	Education	3579	0,3	1543	62	5	1907	62		
85	Health and social work	10801	1,0	1658	233	15	8818	73	3	1
90	Sewage and refuse disposal, sanitation and similar activities	479	0,0	33	13	2	327	85	18	
91	Activities of membership organizations n.e.c.	165	0,0	61	1		87	13		3
92	Recreational, cultural and sporting activities	8647	0,8	1350	197	14	6777	231	66	12
93	Other service activities	15200	1,4	4658	417	42	9577	305	76	124
95	Activities of households as employers of domestic staff	374	0,0	133	6	1	230	3		1
99	Extra-territorial organizations and bodies	53	0,0	30			21	2		

*)Field of activity declared when registered, according to CAEN classification

Table no. 7

**Operations carried on with the Trade Registers,
by counties and categories,
in September 2003**

County	Total of operations carried on		out of which:							
			New incorporations		Changes in statutory documents		out of which: of liquidation, dissolution		Strike off companies	
	No.	%	No.	%	No.	%	No.	%	No.	%
0	1	2	3	4	5	6	7	8	9	10
Total ROMÂNIA	37769	100,0	9392	24,9	24750	65,5	192	0,5	3627	9,6
ALBA	336	100,0	122	36,3	201	59,8	2	0,6	13	3,9
ARAD	751	100,0	332	44,2	401	53,4	12	1,6	18	2,4
ARGES	786	100,0	270	34,4	474	60,3	2	0,3	42	5,3
BACAU	637	100,0	207	32,5	407	63,9	10	1,6	23	3,6
BIHOR	854	100,0	255	29,9	565	66,2	3	0,4	34	4,0
BISTRITA-NASAUD	322	100,0	106	32,9	196	60,9	6	1,9	20	6,2
BOTOSANI	769	100,0	218	28,3	542	70,5			9	1,2
BRASOV	1051	100,0	398	37,9	642	61,1	2	0,2	11	1,0
BRAILA	859	100,0	161	18,7	673	78,3	2	0,2	25	2,9
BUZAU	445	100,0	149	33,5	278	62,5			18	4,0
CARAS-SEVERIN	276	100,0	92	33,3	164	59,4	1	0,4	20	7,2
CALARASI	197	100,0	77	39,1	116	58,9	1	0,5	4	2,0
CLUJ	1225	100,0	397	32,4	804	65,6	4	0,3	24	2,0
CONSTANTA	2462	100,0	375	15,2	2051	83,3	23	0,9	36	1,5
COVASNA	224	100,0	71	31,7	150	67,0	1	0,4	3	1,3
DAMBOVITA	487	100,0	133	27,3	306	62,8	1	0,2	48	9,9
DOLJ	868	100,0	512	59,0	344	39,6	9	1,0	12	1,4
GALATI	649	100,0	160	24,7	479	73,8	2	0,3	10	1,5
GIURGIU	196	100,0	70	35,7	116	59,2	4	2,0	10	5,1
GORJ	454	100,0	116	25,6	321	70,7	2	0,4	17	3,7
HARGHITA	896	100,0	226	25,2	652	72,8	16	1,8	18	2,0
HUNEDOARA	549	100,0	188	34,2	342	62,3	2	0,4	19	3,5
IALOMITA	281	100,0	90	32,0	187	66,5	5	1,8	4	1,4
IASI	1055	100,0	325	30,8	718	68,1	2	0,2	12	1,1
MARAMURES	798	100,0	276	34,6	495	62,0	5	0,6	27	3,4
MEHEDINTI	692	100,0	48	6,9	628	90,8	1	0,1	16	2,3
MURES	6564	100,0	185	2,8	3548	54,1	2	0,0	2831	43,1
NEAMT	728	100,0	278	38,2	425	58,4	3	0,4	25	3,4
OLT	317	100,0	101	31,9	186	58,7	2	0,6	30	9,5
PRAHOVA	1026	100,0	275	26,8	700	68,2			51	5,0
SALAJ	245	100,0	123	50,2	118	48,2	3	1,2	4	1,6
SATU MARE	574	100,0	187	32,6	375	65,3			12	2,1
SIBIU	639	100,0	240	37,6	379	59,3	3	0,5	20	3,1
SUCEAVA	624	100,0	196	31,4	403	64,6			25	4,0
TELEORMAN	249	100,0	91	36,5	156	62,7	2	0,8	2	0,8
TIMIS	1039	100,0	350	33,7	678	65,3	3	0,3	11	1,1
TULCEA	184	100,0	60	32,6	117	63,6			7	3,8
VASLUI	242	100,0	116	47,9	104	43,0	1	0,4	22	9,1
VALCEA	740	100,0	223	30,1	489	66,1	4	0,5	28	3,8
VRANCEA	582	100,0	102	17,5	459	78,9	13	2,2	21	3,6
MUN. BUCURESTI	5484	100,0	1360	24,8	4081	74,4	38	0,7	43	0,8
ILFOV	413	100,0	131	31,7	280	67,8			2	0,5

*) by effect of implementation of Law no. 314/2001, art.1 and art. 6

*** Less than 0,01%

Table no. 8

**The number of incorporations in the Trade Register,
by counties and sources of capital,
in September 2003**

County	Total		out of which:					Rnking by: *	
			Private capital			State majority capital			Mixed capital (state+private)
			out of which:			out of which:			
			PF+AF	Companies	OC	RA	Companies		Companies
No.	%	No.	No.	No.	No.	No.	No.		
0	1	2	3	4	5	6	7	8	9
Total ROMÂNIA	9392	100,0	3581	5803	6			2	X
ALBA	122	1,3	41	81					36
ARAD	332	3,5	158	174					10
ARGES	270	2,9	116	154					19
BACAU	207	2,2	71	136					9
BIHOR	255	2,7	135	120					18
BISTRITA-NASAUD	106	1,1	25	81					26
BOTOSANI	218	2,3	138	80					22
BRASOV	398	4,2	177	221					42
BRAILA	161	1,7	79	82					38
BUZAU	149	1,6	66	83					37
CARAS-SEVERIN	92	1,0	21	71					8
CALARASI	77	0,8	26	51					33
CLUJ	397	4,2	146	251					3
CONSTANTA	375	4,0	130	245					14
COVASNA	71	0,8	33	38					5
DAMBOVITA	133	1,4	59	74					11
DOLJ	512	5,5	327	185					17
GALATI	160	1,7	38	122					34
GIURGIU	70	0,7	42	28					39
GORJ	116	1,2	50	66					28
HARGHITA	226	2,4	148	78					35
HUNEDOARA	188	2,0	43	145					7
IALOMITA	90	1,0	39	51					31
IASI	325	3,5	128	194	3				4
MARAMURES	276	2,9	106	170					6
MEHEDINTI	48	0,5	16	32					41
MURES	185	2,0	44	141					13
NEAMT	278	3,0	107	171					27
OLT	101	1,1	30	71					30
PRAHOVA	275	2,9	143	131				1	29
SALAJ	123	1,3	72	51					24
SATU MARE	187	2,0	66	121					25
SIBIU	240	2,6	103	136	1				12
SUCEAVA	196	2,1	72	124					1
TELEORMAN	91	1,0	29	62					32
TIMIS	350	3,7	69	281					20
TULCEA	60	0,6	30	30					21
VASLUI	116	1,2	55	61					15
VALCEA	223	2,4	141	82					23
VRANCEA	102	1,1	36	66					40
MUN. BUCURESTI	1360	14,5	204	1156					16
ILFOV	131	1,4	22	106	2			1	2

*) The total number of incorporations (col 1)

*** Less than 0,01%

Table no.9

**The number of incorporations in the Trade Register,
by counties and category
in September 2003**

County	Total		out of which:						RA	OC
			PF+AF	companies: 5805						
	No.	%		No.	SNC	SCS	SRL	SA	No.	No.
	0	1	2	3	4	5	6	7	8	9
Total ROMÂNIA	9392	100,0	3581	5	1	5716	83		6	
ALBA	122	1,3	41			81				
ARAD	332	3,5	158			173	1			
ARGES	270	2,9	116			153	1			
BACAU	207	2,2	71			135	1			
BIHOR	255	2,7	135			119	1			
BISTRITA-NASAUD	106	1,1	25			81				
BOTOSANI	218	2,3	138			80				
BRASOV	398	4,2	177			218	3			
BRAILA	161	1,7	79			80	2			
BUZAU	149	1,6	66			83				
CARAS-SEVERIN	92	1,0	21			71				
CALARASI	77	0,8	26			51				
CLUJ	397	4,2	146	1		250				
CONSTANTA	375	4,0	130			240	5			
COVASNA	71	0,8	33			38				
DAMBOVITA	133	1,4	59			70	4			
DOLJ	512	5,5	327			185				
GALATI	160	1,7	38			122				
GIURGIU	70	0,7	42			28				
GORJ	116	1,2	50			63	3			
HARGHITA	226	2,4	148			75	3			
HUNEDOARA	188	2,0	43			144	1			
IALOMITA	90	1,0	39			51				
IASI	325	3,5	128			188	6		3	
MARAMURES	276	2,9	106			165	5			
MEHEDINTI	48	0,5	16			31	1			
MURES	185	2,0	44			136	5			
NEAMT	278	3,0	107			169	2			
OLT	101	1,1	30			71				
PRAHOVA	275	2,9	143			128	4			
SALAJ	123	1,3	72			51				
SATU MARE	187	2,0	66			117	4			
SIBIU	240	2,6	103			133	3		1	
SUCEAVA	196	2,1	72			124				
TELEORMAN	91	1,0	29			62				
TIMIS	350	3,7	69	4	1	273	3			
TULCEA	60	0,6	30			29	1			
VASLUI	116	1,2	55			61				
VALCEA	223	2,4	141			82				
VRANCEA	102	1,1	36			65	1			
MUN. BUCURESTI	1360	14,5	204			1137	19			
ILFOV	131	1,4	22			103	4		2	

Table no. 10

The number of incorporations in the Trade Register, by field of activity*
and categories in September 2003

CAEN segment	Field of activity	Total		out of which:						
				PF+AF	companies: 5805				RA	OC
		SNC	SCS		SRL	SA				
		No.	%	No.	No.	No.	No.	No.	No.	
0	1	2	3	4	5	6	7	8	9	10
	Total ROMÂNIA	9392	100,0	3581	5	1	5716	83		6
1	Agriculture, hunting and related service activities	190	2,0	80			104	6		
2	Forestry, logging and related service activities	62	0,7	5			57			
5	Fishing, fish farming and related service activities	22	0,2	11			11			
10	Mining of coal and lignite; extraction of peat									
11	Extraction of crude petroleum and natural gas; service activities incidental to oil and gas extraction, excluding surveying	6	0,1				2	4		
12	Mining of uranium and thorium ores									
13	Mining of metal ores	2	0,0				2			
14	Other mining and quarrying	6	0,1				6			
15	Manufacture of food products and beverages	295	3,1	164			128	3		
16	Manufacture of tobacco products									
17	Manufacture of textiles	30	0,3	7			23			
18	Manufacture of wearing apparel; dressing and dyeing of fur	102	1,1	32			70			
19	Tanning and dressing of leather; manufacture of luggage, handbags, saddlery, harness and footwear	26	0,3	4			22			
20	Manufacture of wood and of products of wood and cork, except furniture; manufacture of articles of straw and plaiting materials	134	1,4	59			74	1		
21	Manufacture of pulp, paper and paper products	19	0,2	3			16			
22	Publishing, printing and reproduction of recorded media	76	0,8	10			66			
23	Manufacture of coke, refined petroleum products and nuclear fuel									
24	Manufacture of chemicals and chemical products	9	0,1	1			7	1		
25	Manufacture of rubber and plastic products	18	0,2	3			15			
26	Manufacture of other non-metallic mineral products	52	0,6	13			39			
27	Manufacture of basic metals	4	0,0				3	1		
28	Manufacture of fabricated metal products, except machinery and equipment	110	1,2	40			70			
29	Manufacture of machinery and equipment n.e.c.	17	0,2	1			15	1		
30	Manufacture of office machinery and computers	3	0,0				3			
31	Manufacture of electrical machinery and apparatus n.e.c.	10	0,1				10			
32	Manufacture of radio, television and communication equipment and apparatus	2	0,0				2			
33	Manufacture of medical, precision and optical instruments, watches and clocks	23	0,2	15			8			
34	Manufacture of motor vehicles, trailers and semi- trailers	3	0,0	1			2			
35	Manufacture of other transport equipment	9	0,1	3			6			
36	Manufacture of furniture; manufacturing n.e.c.	89	0,9	30			56	3		
37	Recycling	28	0,3	2			25	1		
40	Electricity, gas, steam and hot water supply	5	0,1				4	1		
41	Collection, purification and distribution of water	1	0,0				1			
45	Construction	624	6,6	189			424	10		1

Table no. 10
(continuance)

**The number of incorporations in the Trade Register, by field of activity*
and categories in September 2003**

CAEN segment	Field of activity	Total		out of which:							
				PF+AF	companies: 5805				RA	OC	
		SNC	SCS		SRL	SA					
		No.	%	No.	No.	No.	No.	No.	No.	No.	
0	1	2	3	4	5	6	7	8	9	10	
	Total ROMÂNIA	9392	100,0	3581	5	1	5716	83			6
50	Sale, maintenance and repair of motor vehicles and motorcycles; retail sale of automotive fuel	222	2,4	50			172				
51	Wholesale trade and commission trade, except of motor vehicles and motorcycles	840	8,9	76			755	9			
52	Retail trade, except of motor vehicles and motorcycles; repair of personal and household goods	2397	25,5	1077			1316				4
55	Hotels and restaurants	374	4,0	96			272	6			
60	Land transport; transport via pipelines	1170	12,5	860	1		308	1			
61	Water transport										
62	Air transport										
63	Supporting and auxiliary transport activities; activities of travel agencies	60	0,6	7			51	2			
64	Post and telecommunications	85	0,9	16			68	1			
65	Financial intermediation, except insurance and pension funding	57	0,6				46	10			1
66	Insurance and pension funding, except compulsory social security	11	0,1	2			1	8			
67	Activities auxiliary to financial intermediation	73	0,8	32			40	1			
70	Real estate activities	178	1,9	6			170	2			
71	Renting of machinery and equipment without operator and of personal and household goods	28	0,3	9			19				
72	Computer and related activities	220	2,3	49	2		169				
73	Research and development	8	0,1	4			4				
74	Other business activities	1114	11,9	335	2	1	767	9			
75	Public administration and defence; compulsory social security										
80	Education	83	0,9	61			22				
85	Health and social work	100	1,1	16			83	1			
90	Sewage and refuse disposal, sanitation and similar activities	8	0,1	3			4	1			
91	Activities of membership organizations n.e.c.	2	0,0	2							
92	Recreational, cultural and sporting activities	134	1,4	48			86				
93	Other service activities	247	2,6	157			90				
95	Activities of households as employers of domestic staff	4	0,0	2			2				
99	Extra-territorial organizations and bodies										

*)Field of activity declared when registered, according to CAEN classification

Table no. 11

**Number of companies registered and the amount
of subscribed capital, by county
in September 2003**

County	Total registered companies		Subscribed capital		Average subscribed capital on company
	No.	%	mil.ROL	%	mil.ROL
0	1	2	3	4	5
Total ROMÂNIA	5805	100,0	317385,8	100,0	55,1
ALBA	81	1,4	226,3	0,1	2,8
ARAD	174	3,0	1965,9	0,6	11,4
ARGES	154	2,7	1357,2	0,4	8,9
BACAU	136	2,3	1167,2	0,4	8,6
BIHOR	120	2,1	504,1	0,2	4,2
BISTRITA-NASAUD	81	1,4	1142,5	0,4	14,1
BOTOSANI	80	1,4	412,5	0,1	5,2
BRASOV	221	3,8	4576,1	1,4	21,0
BRAILA	82	1,4	2025,7	0,6	25,0
BUZAU	83	1,4	2266,7	0,7	27,3
CARAS-SEVERIN	71	1,2	2722,4	0,9	38,3
CALARASI	51	0,9	287,0	0,1	5,6
CLUJ	251	4,3	2750,9	0,9	11,0
CONSTANTA	245	4,2	7161,1	2,3	29,3
COVASNA	38	0,7	97,0	0,0	2,6
DAMBOVITA	74	1,3	22840,8	7,2	312,9
DOLJ	185	3,2	3051,8	1,0	16,5
GALATI	122	2,1	361,2	0,1	3,0
GIURGIU	28	0,5	300,0	0,1	10,7
GORJ	66	1,1	1495,4	0,5	22,7
HARGHITA	78	1,3	2353,4	0,7	31,4
HUNEDOARA	145	2,5	694,3	0,2	4,8
IALOMITA	51	0,9	262,7	0,1	5,2
IASI	194	3,3	1761,7	0,6	9,2
MARAMURES	170	2,9	17093,3	5,4	102,4
MEHEDINTI	32	0,6	80,0	0,0	2,6
MURES	141	2,4	14478,5	4,6	105,7
NEAMT	171	2,9	4555,4	1,4	26,6
OLT	71	1,2	613,1	0,2	8,8
PRAHOVA	132	2,3	12254,5	3,9	94,3
SALAJ	51	0,9	179,0	0,1	3,6
SATU MARE	121	2,1	6180,3	1,9	51,1
SIBIU	136	2,3	17831,8	5,6	133,1
SUCEAVA	124	2,1	939,2	0,3	7,6
TELEORMAN	62	1,1	1690,2	0,5	27,7
TIMIS	281	4,8	2683,8	0,8	9,7
TULCEA	30	0,5	60,5	0,0	2,1
VASLUI	61	1,1	257,3	0,1	4,2
VALCEA	82	1,4	470,2	0,1	5,7
VRANCEA	66	1,1	8422,2	2,7	127,6
MUN. BUCURESTI	1156	19,9	96922,1	30,5	84,4
ILFOV	107	1,8	70890,3	22,3	668,8

Note: The average does not include filials because according to the

*** Less than 0,01%

Table no. 12

**Number of registered companies and the amount
of subscribed capital by category,
in September 2003**

Company type	Total registered companies		Subscribed capital		Average subscribed capital on company
	No.	%	mil. ROL	%	mil. ROL
0	1	2	3	4	5
Total ROMÂNIA	5805	100,0	317385,8	100,0	55,1
SNC	5	0,1	7,1	***	1,4
SCS	1	0,0	2,0	***	-
SA	83	1,4	188650,5	59,4	3309,7
SRL	5716	98,5	128726,2	40,6	22,6
SCA					

Note: The average does not include filials because according to the Law no.31/1990 they are not juridical persons

*** Less than 0,01%

Diagram no.5

