



MINISTRY OF JUSTICE

THE NATIONAL TRADE REGISTER OFFICE

Bucharest, 2, Octavian Goga Blvd., Sector 3; Phone: 320.60.13; Fax: 320.58.29; Website: [www.onra.ro](http://www.onra.ro); E-mail: [onra@onra.ro](mailto:onra@onra.ro)

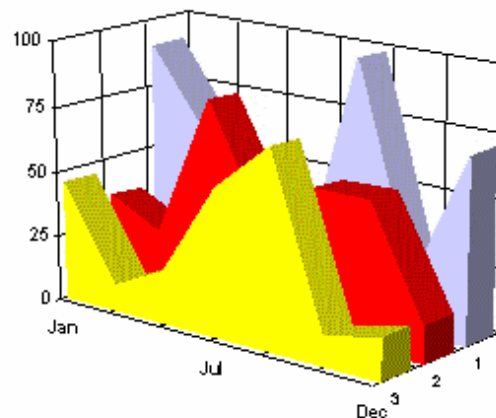
# PROCEEDINGS IN THE CENTRAL TRADE REGISTER

## STATISTICAL SYNTHESIS

OF

RECORDS IN THE CENTRAL TRADE REGISTER

- the 31<sup>st</sup> of July 2003 - provisional data -



- ISSUE No. 140 -

**MINISTRY OF JUSTICE  
THE NATIONAL TRADE REGISTER OFFICE**

---

- Operations of incorporation of companies, changes in statutory documents and strike-off of companies are based on Law No.26/1990 reissued, Law No.31/1990, reissued, OUG No.76/2001, reissued and Methodology Norms No. P/608/1998.
  
- This paper presents the trend in operations registered in The Trade Register Office attached to the law court of Bucharest and in the Trade Register Offices attached to the law court in each county of Romania.
  
- Information recorded in the Central Trade Register concern operations compulsory by law to be registered in the trade registers within the 42 trade register offices attached to the law courts.

*• No part of the content of this publication, in original or in any modified format, may be reproduced, stored in a retrieval system, or transmitted, in any form or by any means, without the prior permission in writing of The Ministry of Justice – The National Trade Register Office.*

*• The content of this publication may be referred to in articles, studies, books, as supporting or explanatory data under the condition only, the source of the information to be clearly and precisely specified.*

*Printed: July 2003*

# Contents

	Page
<b>1 Explanatory Note</b>	<b>1</b>
<b>2.1 Data for December 1990 – July 2003</b>	<b>3</b>
Table no.1 – Operations registered in the Trade Register, by categories during the period of December 1990 – July 2003, in total by country and counties, rate of categories of operations in total operations country	3
Table no.1.a – Operations registered in the Trade Register, by categories during the period of December 1990 – July 2003, in total by country and counties, counties’ rate in total country	4
Table no.2 – Status of reissuing the incorporation certificate by exchange of the registration certificate, the 31 of July 2003	5
Table no. 3 – Number and structure of incorporations in the Trade Register, by years, during the period of December 1990- July 2003	6
Table no.4 – The number of incorporations in the Trade Register, by counties and sources of capital, in the period December 1990 - July 2003	7
Table no. 5 – The number of incorporations in the Trade Register, by counties and categories, during the period of December 1990 – July 2003	8
Table no. 6 – The number of incorporations in the Trade Register, by field of activity and categories, during the period of December 1990 - July 2003	9
<b>2.2 Data for July 2003</b>	<b>11</b>
Table no. 7 – Operations carried on with the Trade Registers, by counties and categories, in July 2003	11
Table no. 8 – The number of incorporations in the Trade Register, by counties and sources of capital, in July 2003	12
Table no. 9 – The number of incorporations in the Trade Register, by counties and category in July 2003	13
Table no. 10 –The number of incorporations in the Trade Register, by field of activity and categories in July 2003	14
Table no. 11 – Number of companies registered and the amount of subscribed capital, by county in July 2003	16
Table no. 12– Number of registered companies and the amount of subscribed capital by category, in July 2003	17
Diagram no. 5 – Average subscribed capital on company in July 2003	17

## Explanatory Note

The Trade Register Office is set-up by Law No. 26/1990, reissued and modified by OUG No. 129/2002, became an active institution since December 1990 and is structured in two levels:

- the national level, represented by the National Trade Register Office organised under the Ministry of Justice
- the local level, represented by the 42 trade register offices attached to the law courts and co-ordinated by the National Trade Register Office

The categories of businessmen compulsory to register in the trade register are:

- natural persons tradesmen and family associations doing usually commercial acts, commercial companies, national companies, companies under state supervision, and co-operative organisations
- subsidiaries registered as commercial companies and legal persons following the legal proceedings of set-up, activity and incorporation according to the type of the legally set-up company.

### Usual Terms:

- incorporation – represents the registration of the company in the trade registry awarding the quality of legal person.

- other statutory documents – represent the official registration of the changes occurred in a company's life, such as: changes in headquarters' address, increase or decrease of the issued capital, merger, liquidation, strike-off, etc.

- strike-off – represents the removal of a company from the trade registry, due to dissolution and liquidation, being also the very moment the company loses its quality of legal person. Data also include the companies under the provisions of Law No. 314/2001.

- change of certificate – represents the obligation of companies set-up before OGU No. 76/2001 republished came in force, to request the incorporation certificate and fiscal registration certificate to be replaced with the new registration certificate containing the given unique registration code.

The ratio of these changes is being calculated as a proportion between the effective number of changes and the number of active companies due to operate the change.

- active company from the legal point of view – a company registered in the trade register and which is not affected by any of the situations leading to the temporary or permanently loss of this status (e.g. dissolution, liquidation, strike-off)

- operations represent all the records in the trade registry including incorporations, other statutory documents and strike-off of companies, irrespective of the object of activity, company's type and origin of the subscribed capital (local or foreign investment).

• **Terms used in tables and charts**

➤ **Number of companies:** represents, depending on the specific table, the number of companies incorporated in the related period, the number of companies being struck-off from the trade registry.

➤ **Amount of the subscribed capital:**

- **total, in local currency:** the amount of the subscribed capital resulted from totalising the amount subscribed (in cash and in kind) in local currency (ROL)

➤ **Regional development:**

*North-East:* Suceava, Botoşani, Neamţ, Iaşi, Bacău, Vaslui.

*South-East:* Vrancea, Galaţi, Buzău, Brăila, Tulcea, Constanţa.

*South-Muntenia:* Argeş, Dâmboviţa, Prahova, Teleorman, Giurgiu, Călăraşi, Ialomiţa.

*South-West Oltenia:* Gorj, Vâlcea, Dolj, Mehedinţi, Olt.

*West:* Arad, Caraş-Severin, Hunedoara, Timiş.

*North-West:* Bihor, Bistriţa, Cluj, Satu Mare, Sălaj, Maramureş.

*Center:* Alba, Braşov, Covasna, Harghita, Mureş, Sibiu.

*Bucharest-Ilfov:* Bucureşti, Ilfov.

CAEN code – The Classification of Activities in the National Economy was approved by HG No. 656/1997, modified by Order No 601 of the President of National Institute of Statistics being compatible with the international classification used in statistic reports and official documents. Activities are ranked upon homogeneity principle by sections, divisions, groups and classes.

Common abbreviations

- **PF** - Natural Persons Tradesman
- **AF** - Family association
- **SNC** - General Partnership
- **SCS** - Limited Partnership
- **SA** - Joint stock company
- **SRL** - Limited liability company
- **RA** - Company Under State Supervision
- **OC** - Co-operative organisation

Source:

The integrated IT system of the trade registry is designed by The National Trade Registry Office according to the provisions of the related legislation in force. The source of information is the computerised system of the trade registers handled by the Trade Register Offices attached to the law courts.

Table no. 1

**Operations registered in the Trade Register, by categories**  
**during the period of December 1990 - July 2003, in total by country and counties,**  
**- rate of categories of operations in total operations/country -**

Counties	Total of registered operations		out of which :								Strike off companies	
			Registered companies		Changes in statutory documents		out of which :					
	No.						%		of liquidation, dissolution		out of which :	
			No.		%				No.		%	
0	1	2	3	4	5	6	7	8	9	10	11	12
<b>Total ROMÂNIA</b>	<b>3247741</b>	<b>100,0</b>	<b>1057298</b>	<b>100,0</b>	<b>2001074</b>	<b>100,0</b>	<b>185042</b>	<b>100,0</b>	<b>175811</b>	<b>100,0</b>	<b>189369</b>	<b>100,0</b>
ALBA	40003	1,2	15057	1,4	24296	1,2	3963	2,1	3596	2,0	650	0,3
ARAD	70723	2,2	23877	2,3	42595	2,1	3306	1,8	2974	1,7	4251	2,2
ARGES	69844	2,2	26518	2,5	42270	2,1	4244	2,3	4120	2,3	1056	0,6
BACAU	61592	1,9	27596	2,6	32617	1,6	6287	3,4	5278	3,0	1379	0,7
BIHOR	88481	2,7	30912	2,9	56189	2,8	4831	2,6	4599	2,6	1380	0,7
BISTRITA-NASAUD	36735	1,1	12957	1,2	21650	1,1	1213	0,7	1120	0,6	2128	1,1
BOTOSANI	28765	0,9	12321	1,2	14801	0,7	1638	0,9	1563	0,9	1643	0,9
BRASOV	109573	3,4	32998	3,1	70785	3,5	5022	2,7	4893	2,8	5790	3,1
BRAILA	46556	1,4	14630	1,4	31465	1,6	4589	2,5	4509	2,6	461	0,2
BUZAU	61053	1,9	19649	1,9	38280	1,9	2253	1,2	2109	1,2	3124	1,6
CARAS-SEVERIN	38247	1,2	13445	1,3	21941	1,1	1943	1,1	1922	1,1	2861	1,5
CALARASI	29665	0,9	11442	1,1	16418	0,8	76	0,0			1805	1,0
CLUJ	120171	3,7	45187	4,3	73103	3,7	8273	4,5	8113	4,6	1881	1,0
CONSTANTA	141502	4,4	45467	4,3	83694	4,2	11508	6,2	10621	6,0	12341	6,5
COVASNA	28753	0,9	9037	0,9	18155	0,9	1186	0,6	1175	0,7	1561	0,8
DAMBOVITA	51579	1,6	21035	2,0	25805	1,3	3028	1,6	2951	1,7	4739	2,5
DOLJ	78706	2,4	27980	2,6	43940	2,2	5867	3,2	5634	3,2	6786	3,6
GALATI	92733	2,9	26020	2,5	60089	3,0	5455	2,9	5346	3,0	6624	3,5
GIURGIU	21942	0,7	8670	0,8	10923	0,5	28	0,0			2349	1,2
GORJ	43031	1,3	13159	1,2	26702	1,3	2717	1,5	2667	1,5	3170	1,7
HARGHITA	35666	1,1	12850	1,2	22336	1,1	75	0,0			480	0,3
HUNEDOARA	56858	1,8	22139	2,1	31076	1,6	3054	1,7	2944	1,7	3643	1,9
IALOMITA	32200	1,0	10808	1,0	19188	1,0	1683	0,9	1587	0,9	2204	1,2
IASI	111438	3,4	31353	3,0	75993	3,8	4718	2,5	4227	2,4	4092	2,2
MARAMURES	75448	2,3	28836	2,7	43454	2,2	3083	1,7	2924	1,7	3158	1,7
MEHEDINTI	34429	1,1	12897	1,2	17892	0,9	3140	1,7	3085	1,8	3640	1,9
MURES	67889	2,1	26569	2,5	40424	2,0	3065	1,7	2944	1,7	896	0,5
NEAMT	57469	1,8	22865	2,2	31069	1,6	2756	1,5	2435	1,4	3535	1,9
OLT	43402	1,3	16335	1,5	23922	1,2	2110	1,1	2033	1,2	3145	1,7
PRAHOVA	120851	3,7	34229	3,2	80332	4,0	4197	2,3	3935	2,2	6290	3,3
SALAJ	20690	0,6	8459	0,8	11199	0,6	719	0,4	683	0,4	1032	0,5
SATU MARE	51073	1,6	17113	1,6	30509	1,5	2928	1,6	2918	1,7	3451	1,8
SIBIU	73800	2,3	18733	1,8	51858	2,6	2597	1,4	2583	1,5	3209	1,7
SUCEAVA	73189	2,3	28855	2,7	40689	2,0	2420	1,3	2387	1,4	3645	1,9
TELEORMAN	39209	1,2	12683	1,2	26085	1,3	1549	0,8	1508	0,9	441	0,2
TIMIS	136524	4,2	34133	3,2	94018	4,7	7538	4,1	7273	4,1	8373	4,4
TULCEA	32420	1,0	11846	1,1	18910	0,9	1182	0,6	1003	0,6	1664	0,9
VASLUI	36393	1,1	13411	1,3	21405	1,1	1597	0,9	1386	0,8	1577	0,8
VALCEA	52377	1,6	17853	1,7	31882	1,6	2053	1,1	1888	1,1	2642	1,4
VRANCEA	35701	1,1	12765	1,2	22266	1,1	1699	0,9	1593	0,9	670	0,4
MUN. BUCURESTI	770626	23,7	209952	19,9	497200	24,8	53563	28,9	51406	29,2	63474	33,5
ILFOV	30435	0,9	14657	1,4	13649	0,7	1889	1,0	1879	1,1	2129	1,1

\*) according to the effect of Law No. 314/2001, art.1 și art. 6

\*\*\* Less than 0,01%

Table no. 1.a

**Operations registered in the Trade Register, by categories  
during the period of December 1990 - July 2003, in total by country and counties,  
- counties' rate in total country -**

Counties	Total of registered operations		out of which :									
			Registered companies		Changes in statutory documents		out of which :				Strike off companies	
	of liquidation, dissolution						out of which :					
	No.	%	No.	%	No.	%	No.	%	No.	%	No.	%
0	1	2	3	4	5	6	7	8	9	10	11	12
<b>Total ROMÂNIA</b>	<b>3247741</b>	<b>100,0</b>	<b>1057298</b>	<b>32,6</b>	<b>2001074</b>	<b>61,6</b>	<b>185042</b>	<b>5,7</b>	<b>175811</b>	<b>5,4</b>	<b>189369</b>	<b>5,8</b>
ALBA	40003	100,0	15057	37,6	24296	60,7	3963	9,9	3596	9,0	650	1,6
ARAD	70723	100,0	23877	33,8	42595	60,2	3306	4,7	2974	4,2	4251	6,0
ARGES	69844	100,0	26518	38,0	42270	60,5	4244	6,1	4120	5,9	1056	1,5
BACAU	61592	100,0	27596	44,8	32617	53,0	6287	10,2	5278	8,6	1379	2,2
BIHOR	88481	100,0	30912	34,9	56189	63,5	4831	5,5	4599	5,2	1380	1,6
BISTRITA-NASAUD	36735	100,0	12957	35,3	21650	58,9	1213	3,3	1120	3,0	2128	5,8
BOTOSANI	28765	100,0	12321	42,8	14801	51,5	1638	5,7	1563	5,4	1643	5,7
BRASOV	109573	100,0	32998	30,1	70785	64,6	5022	4,6	4893	4,5	5790	5,3
BRAILA	46556	100,0	14630	31,4	31465	67,6	4589	9,9	4509	9,7	461	1,0
BUZAU	61053	100,0	19649	32,2	38280	62,7	2253	3,7	2109	3,5	3124	5,1
CARAS-SEVERIN	38247	100,0	13445	35,2	21941	57,4	1943	5,1	1922	5,0	2861	7,5
CALARASI	29665	100,0	11442	38,6	16418	55,3	76	0,3			1805	6,1
CLUJ	120171	100,0	45187	37,6	73103	60,8	8273	6,9	8113	6,8	1881	1,6
CONSTANTA	141502	100,0	45467	32,1	83694	59,1	11508	8,1	10621	7,5	12341	8,7
COVASNA	28753	100,0	9037	31,4	18155	63,1	1186	4,1	1175	4,1	1561	5,4
DAMBOVITA	51579	100,0	21035	40,8	25805	50,0	3028	5,9	2951	5,7	4739	9,2
DOLJ	78706	100,0	27980	35,6	43940	55,8	5867	7,5	5634	7,2	6786	8,6
GALATI	92733	100,0	26020	28,1	60089	64,8	5455	5,9	5346	5,8	6624	7,1
GIURGIU	21942	100,0	8670	39,5	10923	49,8	28	0,1			2349	10,7
GORJ	43031	100,0	13159	30,6	26702	62,1	2717	6,3	2667	6,2	3170	7,4
HARGHITA	35666	100,0	12850	36,0	22336	62,6	75	0,2			480	1,3
HUNEDOARA	56858	100,0	22139	38,9	31076	54,7	3054	5,4	2944	5,2	3643	6,4
IALOMITA	32200	100,0	10808	33,6	19188	59,6	1683	5,2	1587	4,9	2204	6,8
IASI	111438	100,0	31353	28,1	75993	68,2	4718	4,2	4227	3,8	4092	3,7
MARAMURES	75448	100,0	28836	38,2	43454	57,6	3083	4,1	2924	3,9	3158	4,2
MEHEDINTI	34429	100,0	12897	37,5	17892	52,0	3140	9,1	3085	9,0	3640	10,6
MURES	67889	100,0	26569	39,1	40424	59,5	3065	4,5	2944	4,3	896	1,3
NEAMT	57469	100,0	22865	39,8	31069	54,1	2756	4,8	2435	4,2	3535	6,2
OLT	43402	100,0	16335	37,6	23922	55,1	2110	4,9	2033	4,7	3145	7,2
PRAHOVA	120851	100,0	34229	28,3	80332	66,5	4197	3,5	3935	3,3	6290	5,2
SALAJ	20690	100,0	8459	40,9	11199	54,1	719	3,5	683	3,3	1032	5,0
SATU MARE	51073	100,0	17113	33,5	30509	59,7	2928	5,7	2918	5,7	3451	6,8
SIBIU	73800	100,0	18733	25,4	51858	70,3	2597	3,5	2583	3,5	3209	4,3
SUCEAVA	73189	100,0	28855	39,4	40689	55,6	2420	3,3	2387	3,3	3645	5,0
TELEORMAN	39209	100,0	12683	32,3	26085	66,5	1549	4,0	1508	3,8	441	1,1
TIMIS	136524	100,0	34133	25,0	94018	68,9	7538	5,5	7273	5,3	8373	6,1
TULCEA	32420	100,0	11846	36,5	18910	58,3	1182	3,6	1003	3,1	1664	5,1
VASLUI	36393	100,0	13411	36,9	21405	58,8	1597	4,4	1386	3,8	1577	4,3
VALCEA	52377	100,0	17853	34,1	31882	60,9	2053	3,9	1888	3,6	2642	5,0
VRANCEA	35701	100,0	12765	35,8	22266	62,4	1699	4,8	1593	4,5	670	1,9
MUN. BUCURESTI	770626	100,0	209952	27,2	497200	64,5	53563	7,0	51406	6,7	63474	8,2
ILFOV	30435	100,0	14657	48,2	13649	44,8	1889	6,2	1879	6,2	2129	7,0

\*) according to the effect of Law No. 314/2001, art.1 și art. 6

\*\*\* Less than 0,01%

**Table no. 2**

**during the period of December 1990 - July 2003, in total by country and counties,  
registration certificate, the 30 of July 2003**

County	Companies having to request exchange of certificate		Companies having done the exchange of certificate		Exchange rate (3/1)
	Number	%	Number	%	%
0	1	2	3	4	5
<b>Total of ROMÂNIA</b>	<b>648766</b>	<b>100,0</b>	<b>289553</b>	<b>100,0</b>	<b>44,6</b>
ALBA	9078	1,4	3881	1,3	42,8
ARAD	15349	2,4	5457	1,9	35,6
ARGES	17379	2,7	8222	2,8	47,3
BACAU	19083	2,9	7484	2,6	39,2
BIHOR	18809	2,9	8836	3,1	47,0
BISTRITA-NASAUD	8987	1,4	3693	1,3	41,1
BOTOSANI	8561	1,3	3229	1,1	37,7
BRASOV	17310	2,7	11853	4,1	68,5
BRAILA	8799	1,4	5097	1,8	57,9
BUZAU	13115	2,0	5740	2,0	43,8
CARAS-SEVERIN	8029	1,2	3460	1,2	43,1
CALARASI	7914	1,2	2834	1,0	35,8
CLUJ	21712	3,3	11874	4,1	54,7
CONSTANTA	23116	3,6	12313	4,3	53,3
COVASNA	6400	1,0	3518	1,2	55,0
DAMBOVITA	13320	2,1	5116	1,8	38,4
DOLJ	17009	2,6	7195	2,5	42,3
GALATI	14918	2,3	7162	2,5	48,0
GIURGIU	4723	0,7	2041	0,7	43,2
GORJ	7271	1,1	3433	1,2	47,2
HARGHITA	7970	1,2	3528	1,2	44,3
HUNEDOARA	15308	2,4	5594	1,9	36,5
IALOMITA	6790	1,0	2645	0,9	39,0
IASI	22300	3,4	9840	3,4	44,1
MARAMURES	21472	3,3	9538	3,3	44,4
MEHEDINTI	7769	1,2	2567	0,9	33,0
MURES	17897	2,8	7137	2,5	39,9
NEAMT	15187	2,3	5416	1,9	35,7
OLT	10997	1,7	4609	1,6	41,9
PRAHOVA	21987	3,4	10590	3,7	48,2
SALAJ	5430	0,8	2581	0,9	47,5
SATU MARE	11144	1,7	4019	1,4	36,1
SIBIU	12203	1,9	6225	2,1	51,0
SUCEAVA	21506	3,3	7017	2,4	32,6
TELEORMAN	9105	1,4	4001	1,4	43,9
TIMIS	20049	3,1	9825	3,4	49,0
TULCEA	8177	1,3	3057	1,1	37,4
VASLUI	9142	1,4	3541	1,2	38,7
VALCEA	10837	1,7	5205	1,8	48,0
VRANCEA	6899	1,1	3301	1,1	47,8
MUN. BUCURESTI	118159	18,2	53551	18,5	45,3
ILFOV	7556	1,2	3328	1,1	44,0

Note: Figures in column 1 are being issued in accordance with the methodological note.

\*\*\* Sub 0,01%

**Table no.3**

**Number and structure of incorporations in the Trade Register, by years, during the period of December 1990 - July 2003, in total by country and counties,**

Period (year, month)	Registered companies	Percentage	
	No.	%	%
0	1	2	3
<b>Total, 31 July 2002,</b>	<b>1057298</b>	<b>100,00</b>	
out of which			
Year 1990	81	0,01	
Year 1991	95840	9,06	
Year 1992	137456	13,00	
Year 1993	117078	11,07	
Year 1994	137445	13,00	
Year 1995	65479	6,19	
Year 1996	62089	5,87	
Year 1997	55663	5,26	
Year 1998	63878	6,04	
Year 1999	57197	5,41	
Year 2000	57291	5,42	
Year 2001	61265	5,79	
Year 2002	84780	8,02	
<b>Year 2003 (1.I - 31.VII),</b>	<b>61756</b>	<b>5,84</b>	<b>100,0</b>
out of which :			
January	6706		10,9
February	8659		14,0
March	8168		13,2
April	8667		14,0
May	8427		13,6
June	10496		17,0
July	10633		17,22

Note: Column 2 reveals the annual structure of incorporations; column 3 reveals the structure by months during the current year.

\*\*\* Less than 0,01%

**Diagram no.1**

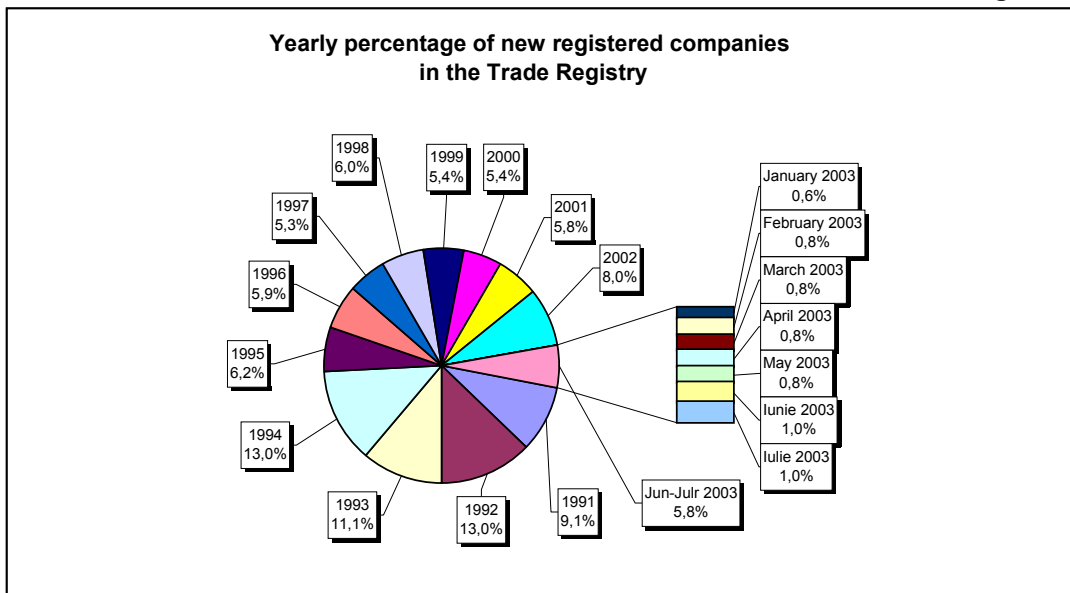


Table no. 4

The number of incorporations in the Trade Register, by counties and during the period of December 1990 - July 2003, in total by country and counties,

Counties	Total		out of which:					Ranking by: *	
			Private capital			State majority capital			Mixed capital (state+private)
			out of which:			out of which:			Companies
			PF+AF	Companies	OC	RA	Companies		Companies
No.	%	No.	No.	No.	No.	No.	No.		
0	1	2	3	4	5	6	7	8	9
<b>Total ROMÂNIA</b>	<b>1057298</b>	<b>100,0</b>	<b>209697</b>	<b>830222</b>	<b>5324</b>	<b>1270</b>	<b>2287</b>	<b>8498</b>	<b>X</b>
ALBA	15057	1,4	3720	10957	141	31	38	170	18
ARAD	23878	2,3	8135	15189	156	26	40	332	27
ARGES	26518	2,5	7059	19082	168	29	29	151	29
BACAU	27596	2,6	8733	18408	158	32	42	223	31
BIHOR	30912	2,9	3507	26862	144	31	62	306	35
BISTRITA-NASAUD	12957	1,2	4115	8588	98	18	29	109	12
BOTOSANI	12321	1,2	4276	7614	121	21	170	119	7
BRASOV	32998	3,1	5052	27552	114	36	80	164	37
BRAILA	14630	1,4	2183	12118	95	26	43	165	16
BUZAU	19649	1,9	3912	15398	142	25	42	130	23
CARAS-SEVERIN	13445	1,3	4586	8523	102	33	65	136	15
CALARASI	11442	1,1	2817	8354	86	17	75	93	5
CLUJ	45187	4,3	7226	37460	150	50	40	261	40
CONSTANTA	45467	4,3	5677	38960	202	48	45	535	41
COVASNA	9037	0,9	2168	6638	67	23	32	109	3
DAMBOVITA	21035	2,0	9725	10921	134	29	75	151	24
DOLJ	27980	2,6	3158	24367	161	39	54	201	32
GALATI	26020	2,5	3561	22103	134	28	51	143	28
GIURGIU	8670	0,8	1165	7186	80	20	109	110	2
GORJ	13159	1,2	1870	10876	184	50	79	100	13
HARGHITA	12850	1,2	2704	9780	85	23	30	228	10
HUNEDOARA	22139	2,1	4998	16653	81	37	90	280	25
IALOMITA	10808	1,0	3840	6744	74	15	46	89	4
IASI	31353	3,0	7095	23664	150	32	68	344	36
MARAMURES	28836	2,7	11846	16677	119	34	39	121	33
MEHEDINTI	12897	1,2	3054	9619	82	18	26	98	11
MURES	26569	2,5	9144	17042	154	29	33	167	30
NEAMT	22865	2,2	6949	15539	153	29	30	165	26
OLT	16335	1,5	6082	9881	161	26	62	123	19
PRAHOVA	34229	3,2	7854	25825	177	49	62	262	39
SALAJ	8459	0,8	2343	5903	107	18	27	61	1
SATU MARE	17113	1,6	4120	12713	88	18	40	134	20
SIBIU	18733	1,8	2530	15797	115	26	108	157	22
SUCEAVA	28855	2,7	13364	14981	201	28	61	220	34
TELEORMAN	12683	1,2	3622	8673	151	21	38	178	8
TIMIS	34133	3,2	2385	31160	140	36	68	344	38
TULCEA	11846	1,1	3204	8304	66	18	42	212	6
VASLUI	13411	1,3	6081	7029	109	16	41	135	14
VALCEA	17853	1,7	6125	11372	168	39	37	112	21
VRANCEA	12765	1,2	2623	9883	103	16	27	113	9
MUN. BUCURESTI	209951	19,9	5748	202755	138	110	100	1100	42
ILFOV	14657	1,4	1341	13072	65	20	12	147	17

\*) The total number of incorporations (col 1)

\*\*\* Less than 0,01%

Table no. 5

**The number of incorporations in the Trade Register,  
during the period of December 1990 - July 2003, in total by country and counties,  
December 1990 - July 2003**

County	Total		out of which:						
			PF+AF	companies: 841007				RA	OC
	SNC	SCS		SRL	SA				
	No.	%	No.	No.	No.	No.	No.	No.	
0	1	2	3	4	5	6	7	8	9
<b>Total ROMÂNIA</b>	<b>1057298</b>	<b>100,0</b>	<b>209697</b>	<b>32555</b>	<b>1531</b>	<b>777872</b>	<b>29044</b>	<b>1270</b>	<b>5324</b>
ALBA	15057	1,4	3720	888	11	9746	520	31	141
ARAD	23877	2,3	8135	48	5	14886	620	26	156
ARGES	26518	2,5	7059	107	13	18394	748	29	168
BACAU	27596	2,6	8733	1299	4	16713	656	32	158
BIHOR	30912	2,9	3507	125	47	26213	845	31	144
BISTRITA-NASAUD	12957	1,2	4115	146	20	8180	380	18	98
BOTOSANI	12321	1,2	4276	468	1	7011	423	21	121
BRASOV	32998	3,1	5052	239	19	26805	733	36	114
BRAILA	14630	1,4	2183	376	12	11456	482	26	95
BUZAU	19649	1,9	3912	3745	46	11255	524	25	142
CARAS-SEVERIN	13445	1,3	4586	113	6	8168	437	33	102
CALARASI	11442	1,1	2817	609	3	7581	329	17	86
CLUJ	45187	4,3	7226	2105	18	34561	1077	50	150
CONSTANTA	45467	4,3	5677	311	23	37845	1361	48	202
COVASNA	9037	0,9	2168	147	3	6352	277	23	67
DAMBOVITA	21035	2,0	9725	60	8	10630	449	29	134
DOLJ	27980	2,6	3158	1557	8	22261	796	39	161
GALATI	26020	2,5	3561	1574	6	19979	738	28	134
GIURGIU	8670	0,8	1165	35	8	7055	307	20	80
GORJ	13159	1,2	1870	28	1	10585	441	50	184
HARGHITA	12850	1,2	2704	62	6	9516	454	23	85
HUNEDOARA	22139	2,1	4998	1165	98	15165	595	37	81
IALOMITA	10808	1,0	3840	266	11	6287	315	15	74
IASI	31353	3,0	7095	505	111	22547	911	32	150
MARAMURES	28836	2,7	11846	1925	23	14351	538	34	119
MEHEDINTI	12897	1,2	3054	427	3	9019	294	18	82
MURES	26569	2,5	9144	37	34	16563	608	29	154
NEAMT	22865	2,2	6949	3292	30	11793	619	29	153
OLT	16335	1,5	6082	1611	1	7990	464	26	161
PRAHOVA	34229	3,2	7854	3117	12	22227	793	49	177
SALAJ	8459	0,8	2343	600	4	5120	267	18	107
SATU MARE	17113	1,6	4120	283	4	12167	433	18	88
SIBIU	18733	1,8	2530	772	45	14653	592	26	115
SUCEAVA	28855	2,7	13364	438	8	14284	532	28	201
TELEORMAN	12683	1,2	3622	271	399	7827	392	21	151
TIMIS	34133	3,2	2385	573	23	29826	1150	36	140
TULCEA	11846	1,1	3204	1361	112	6630	455	18	66
VASLUI	13411	1,3	6081	90	11	6722	382	16	109
VALCEA	17853	1,7	6125	362	5	10725	429	39	168
VRANCEA	12765	1,2	2623	356	9	9235	423	16	103
MUN. BUCURESTI	209952	19,9	5748	1016	292	196867	5780	110	138
ILFOV	14657	1,4	1341	46	28	12682	475	20	65

Table no. 6

**The number of incorporations in the Trade Register, by field of activity\*  
during the period of December 1990 - July 2003, in total by country and counties,  
December 1990 - July 2003**

CAEN segment	Field of activity	Total		out of which:						
				PF+AF	companies: 841007				RA	OC
		SNC	SCS		SRL	SA				
		No.	%	No.	No.	No.	No.	No.	No.	
0	1	2	3	4	5	6	7	8	9	10
	<b>Total ROMÂNIA</b>	<b>1057298</b>	<b>100,0</b>	<b>209697</b>	<b>32555</b>	<b>1531</b>	<b>777872</b>	<b>29044</b>	<b>1270</b>	<b>5324</b>
1	Agriculture, hunting and related service activities	43146	4,1	3869	2023	44	33351	3705	37	117
2	Forestry, logging and related service activities	5689	0,5	619	152	3	4644	215	48	8
5	Fishing, fish farming and related service activities	1268	0,1	477	17	3	719	52		
10	Mining of coal and lignite; extraction of peat	64	0,0	1			47	12	4	
11	Extraction of crude petroleum and natural gas; service activities incidental to oil and gas extraction, excluding surveying	261	0,0	2	1		106	106	46	
12	Mining of uranium and thorium ores	133	0,0	32			95	6		
13	Mining of metal ores	507	0,0	162			284	53	8	
14	Other mining and quarrying	1040	0,1	83	9	1	792	152	2	1
15	Manufacture of food products and beverages	62952	6,0	8548	3260	149	48968	1774	5	248
16	Manufacture of tobacco products	274	0,0	47			196	30	1	
17	Manufacture of textiles	9967	0,9	1676	556	16	7178	397		144
18	Manufacture of wearing apparel; dressing and dyeing of fur	16464	1,6	2978	874	37	11926	344	1	304
19	Tanning and dressing of leather; manufacture of luggage, handbags, saddlery, harness and footwear	4108	0,4	573	112	6	3248	117	1	51
20	Manufacture of wood and of products of wood and cork, except furniture; manufacture of articles of straw and plaiting materials	16043	1,5	3527	574	28	11392	471	9	42
21	Manufacture of pulp, paper and paper products	1329	0,1	63	21	1	1136	95		13
22	Publishing, printing and reproduction of recorded media	8881	0,8	621	317	21	7522	377	13	10
23	Manufacture of coke, refined petroleum products and nuclear fuel	221	0,0	21			166	32	2	
24	Manufacture of chemicals and chemical products	3229	0,3	87	89	1	2678	362	6	6
25	Manufacture of rubber and plastic products	4618	0,4	403	313	7	3620	250		24
26	Manufacture of other non-metallic mineral products	5396	0,5	934	212	6	3871	355	5	13
27	Manufacture of basic metals	2197	0,2	138	39	3	1810	197	3	7
28	Manufacture of fabricated metal products, except machinery and equipment	10315	1,0	1235	361	22	7945	679	11	62
29	Manufacture of machinery and equipment n.e.c.	3054	0,3	56	44	7	2523	400	19	5
30	Manufacture of office machinery and computers	1564	0,1	11	25	3	1445	80		
31	Manufacture of electrical machinery and apparatus n.e.c.	1547	0,1	82	44	5	1273	137		6
32	Manufacture of radio, television and communication equipment and apparatus	697	0,1	20	14	3	589	70		1
33	Manufacture of medical, precision and optical instruments, watches and clocks	1525	0,1	216	16	2	1199	88		4
34	Manufacture of motor vehicles, trailers and semi-trailers	730	0,1	17	31	3	559	118		2
35	Manufacture of other transport equipment	1373	0,1	171	86	7	920	114	73	2
36	Manufacture of furniture; manufacturing n.e.c.	10100	1,0	2121	284	15	7207	311	5	157
37	Recycling	3272	0,3	280	51	5	2773	162		1
40	Electricity, gas, steam and hot water supply	2644	0,3	828	3	1	1266	458	88	
41	Collection, purification and distribution of water	3434	0,3	1602	2		1597	160	73	
45	Construction	43306	4,1	7130	608	41	33182	2216	53	76

**Table no. 6**  
(continuing)

**The number of incorporations in the Trade Register, by field of activity\*  
during the period of December 1990 - July 2003, in total by country and counties,  
December 1990 - July 2003**

CAEN segment	Field of activity	Total		out of which:						RA	OC
				PF+AF	companies: 841007						
					SNC	SCS	SRL	SA			
					No.	No.	No.	No.			
0	1	2	3	4	5	6	7	8	9	10	
	<b>Total ROMANIA</b>	<b>1057298</b>	<b>100,0</b>	<b>209697</b>	<b>32555</b>	<b>1531</b>	<b>777872</b>	<b>29044</b>	<b>1270</b>	<b>5324</b>	
50	Sale, maintenance and repair of motor vehicles and motorcycles; retail sale of automotive fuel	40538	3,8	3852	1242	34	34355	1008	5	42	
51	Wholesale trade and commission trade, except of motor vehicles and motorcycles	157379	14,9	9784	4523	147	139522	3087	35	281	
52	Retail trade, except of motor vehicles and motorcycles; repair of personal and household goods	380506	36,0	117778	11904	555	245496	2437	5	2330	
55	Hotels and restaurants	40532	3,8	9190	1634	126	28737	677	73	95	
60	Land transport; transport via pipelines	39781	3,8	10938	842	35	26914	1009	33	10	
61	Water transport	715	0,1	116	82	8	378	60	70	1	
62	Air transport	255	0,0	17			186	42	10		
63	Supporting and auxiliary transport activities; activities of travel agencies	6758	0,6	307	220	14	5703	409	95	10	
64	Post and telecommunications	3396	0,3	141	11	1	2960	269	11	3	
65	Financial intermediation, except insurance and pension funding	4394	0,4	126	15		1469	1755	2	1027	
66	Insurance and pension funding, except compulsory social security	1805	0,2	540	1		483	780		1	
67	Activities auxiliary to financial intermediation	3170	0,3	467	6	2	2437	250		8	
70	Real estate activities	7414	0,7	289	28	6	6680	388	17	6	
71	Renting of machinery and equipment without operator and of personal and household goods	1888	0,2	294	116	8	1314	85	70	1	
72	Computer and related activities	10887	1,0	993	111	12	9430	336	2	3	
73	Research and development	1213	0,1	150	11	2	853	153	42	2	
74	Other business activities	46934	4,4	7120	738	62	37439	1410	106	58	
75	Public administration and defence; compulsory social security	305	0,0	59	5		199	23	18	1	
80	Education	3402	0,3	1417	62	5	1856	62			
85	Health and social work	10566	1,0	1621	232	15	8622	72	3	1	
90	Sewage and refuse disposal, sanitation and similar activities	466	0,0	30	13	2	318	84	18		
91	Activities of membership organizations n.e.c.	161	0,0	58	1		86	13		3	
92	Recreational, cultural and sporting activities	8334	0,8	1249	197	14	6566	230	66	12	
93	Other service activities	14732	1,4	4370	417	42	9397	305	76	124	
95	Activities of households as employers of domestic staff	366	0,0	131	6	1	224	3		1	
99	Extra-territorial organizations and bodies	53	0,0	30			21	2			

\*)Field of activity declared when registered, according to CAEN classification

Table no. 7

**Operations carried on with the Trade Registers,  
during the period of December 1990 - July 2003, in total by country and county  
in July 2003**

County	Total of operations carried on		out of which:							
			New incorporations		Changes in statutory documents		out of which: of liquidation, dissolution		Strike off companies	
	No.	%	No.	%	No.	%	No.	%	No.	%
0	1	2	3	4	5	6	7	8	9	10
<b>Total ROMÂNIA</b>	<b>33100</b>	<b>100,0</b>	<b>10633</b>	<b>32,1</b>	<b>21728</b>	<b>65,6</b>	<b>214</b>	<b>0,6</b>	<b>739</b>	<b>2,2</b>
ALBA	399	100,0	143	35,8	245	61,4	7	1,8	11	2,8
ARAD	470	100,0	323	68,7	95	20,2	6	1,3	52	11,1
ARGES	827	100,0	274	33,1	490	59,3	1	0,1	63	7,6
BACAU	651	100,0	232	35,6	402	61,8	5	0,8	17	2,6
BIHOR	1031	100,0	335	32,5	674	65,4	3	0,3	22	2,1
BISTRITA-NASAUD	306	100,0	92	30,1	197	64,4	4	1,3	17	5,6
BOTOSANI	342	100,0	187	54,7	152	44,4	1	0,3	3	0,9
BRASOV	912	100,0	459	50,3	435	47,7	6	0,7	18	2,0
BRAILA	387	100,0	162	41,9	219	56,6	1	0,3	6	1,6
BUZAU	428	100,0	164	38,3	248	57,9	1	0,2	16	3,7
CARAS-SEVERIN	321	100,0	109	34,0	201	62,6			11	3,4
CALARASI	256	100,0	90	35,2	163	63,7			3	1,2
CLUJ	1730	100,0	514	29,7	1176	68,0	8	0,5	40	2,3
CONSTANTA	2192	100,0	528	24,1	1641	74,9	18	0,8	23	1,0
COVASNA	292	100,0	100	34,2	185	63,4	1	0,3	7	2,4
DAMBOVITA	449	100,0	183	40,8	235	52,3	1	0,2	31	6,9
DOLJ	666	100,0	258	38,7	394	59,2	7	1,1	14	2,1
GALATI	735	100,0	197	26,8	530	72,1	9	1,2	8	1,1
GIURGIU	237	100,0	101	42,6	134	56,5			2	0,8
GORJ	530	100,0	190	35,8	329	62,1	2	0,4	11	2,1
HARGHITA	1016	100,0	296	29,1	696	68,5	3	0,3	24	2,4
HUNEDOARA	821	100,0	255	31,1	552	67,2	2	0,2	14	1,7
IALOMITA	136	100,0	96	70,6	33	24,3	6	4,4	7	5,1
IASI	1123	100,0	362	32,2	748	66,6	2	0,2	13	1,2
MARAMURES	779	100,0	244	31,3	510	65,5	5	0,6	25	3,2
MEHEDINTI	336	100,0	109	32,4	213	63,4	2	0,6	14	4,2
MURES	1051	100,0	250	23,8	798	75,9	2	0,2	3	0,3
NEAMT	736	100,0	292	39,7	423	57,5	6	0,8	21	2,9
OLT	407	100,0	155	38,1	228	56,0	9	2,2	24	5,9
PRHOVA	1042	100,0	339	32,5	671	64,4	3	0,3	32	3,1
SALAJ	308	100,0	117	38,0	184	59,7	22	7,1	7	2,3
SATU MARE	515	100,0	143	27,8	369	71,7	2	0,4	3	0,6
SIBIU	806	100,0	249	30,9	525	65,1	1	0,1	32	4,0
SUCEAVA	282	100,0	158	56,0	100	35,5	1	0,4	24	8,5
TELEORMAN	289	100,0	71	24,6	214	74,0	2	0,7	4	1,4
TIMIS	1254	100,0	301	24,0	940	75,0	5	0,4	13	1,0
TULCEA	149	100,0	97	65,1	43	28,9	2	1,3	9	6,0
VASLUI	363	100,0	152	41,9	181	49,9			30	8,3
VALCEA	518	100,0	183	35,3	322	62,2	6	1,2	13	2,5
VRANCEA	429	100,0	129	30,1	277	64,6	16	3,7	23	5,4
MUN. BUCURESTI	7129	100,0	1788	25,1	5332	74,8	35	0,5	9	0,1
ILFOV	450	100,0	206	45,8	224	49,8	1	0,2	20	4,4

\*) by effect of implementation of Law no. 314/2001, art.1 and art. 6

\*\*\* Less than 0,01%

Table no. 8

**The number of incorporations in the Trade Register,  
during the period of December 1990 - July 2003, in total by country and counties,  
in July 2003**

County	Total		out of which:						Rnking by: *
			Private capital			State majority capital		Mixed capital (state+private)	
			out of which:			out of which:			
			PF+AF	Companies	OC	RA	Companies	Companies	
No.	%	No.	No.	No.	No.	No.	No.		
0	1	2	3	4	5	6	7	8	9
<b>Total ROMÂNIA</b>	<b>10633</b>	<b>100,0</b>	<b>3966</b>	<b>6652</b>	<b>7</b>	<b>4</b>	<b>2</b>	<b>2</b>	<b>X</b>
ALBA	143	1,3	47	96					12
ARAD	323	3,0	145	177	1				35
ARGES	274	2,6	138	136					31
BACAU	232	2,2	99	133					25
BIHOR	335	3,2	171	164					36
BISTRITA-NASAUD	92	0,9	33	59					3
BOTOSANI	187	1,8	126	61					21
BRASOV	459	4,3	224	235					39
BRAILA	162	1,5	70	92					17
BUZAU	164	1,5	56	108					18
CARAS-SEVERIN	109	1,0	27	82					8
CALARASI	90	0,8	31	59					2
CLUJ	514	4,8	129	384		1			40
CONSTANTA	528	5,0	219	309					41
COVASNA	100	0,9	48	52					6
DAMBOVITA	183	1,7	97	86					19
DOLJ	258	2,4	108	150					30
GALATI	197	1,9	43	154					23
GIURGIU	101	0,9	59	42					7
GORJ	190	1,8	101	89					22
HARGHITA	296	2,8	181	115					33
HUNEDOARA	255	2,4	64	191					29
IALOMITA	96	0,9	47	48	1				4
IASI	362	3,4	114	243	5				38
MARAMURES	244	2,3	106	138					26
MEHEDINTI	109	1,0	56	53					9
MURES	250	2,4	93	156		1			28
NEAMT	292	2,7	154	137		1			32
OLT	155	1,5	66	88			1		15
PRAHOVA	339	3,2	168	170				1	37
SALAJ	117	1,1	60	57					10
SATU MARE	143	1,3	43	100					13
SIBIU	249	2,3	104	145					27
SUCEAVA	158	1,5	83	75					16
TELEORMAN	71	0,7	25	44			1	1	1
TIMIS	301	2,8	89	212					34
TULCEA	97	0,9	49	48					5
VASLUI	152	1,4	68	84					14
VALCEA	183	1,7	101	82					20
VRANCEA	129	1,2	61	68					11
MUN. BUCURESTI	1788	16,8	247	1540		1			42
ILFOV	206	1,9	16	190					24

\*) The total number of incorporations (col 1)

\*\*\* Less than 0,01%

Table no.9

The number of incorporations in the Trade Register,  
during the period of December 1990 - July 2003, in total by country and counties,  
in July 2003

County	Total		out of which:						
			PF+AF	companies: 6656				RA	OC
	SNC	SCS		SRL	SA				
	No.	%	No.	No.	No.	No.	No.	No.	
0	1	2	3	4	5	6	7	8	9
<b>Total ROMÂNIA</b>	<b>10633</b>	<b>100,0</b>	<b>3966</b>	<b>1</b>	<b>1</b>	<b>6561</b>	<b>93</b>	<b>4</b>	<b>7</b>
ALBA	143	1,3	47			91	5		
ARAD	323	3,0	145			177			1
ARGES	274	2,6	138			132	4		
BACAU	232	2,2	99			133			
BIHOR	335	3,2	171			162	2		
BISTRITA-NASAUD	92	0,9	33			59			
BOTOSANI	187	1,8	126			61			
BRASOV	459	4,3	224			231	4		
BRAILA	162	1,5	70			91	1		
BUZAU	164	1,5	56			106	2		
CARAS-SEVERIN	109	1,0	27			82			
CALARASI	90	0,8	31			59			
CLUJ	514	4,8	129			377	7	1	
CONSTANTA	528	5,0	219			302	7		
COVASNA	100	0,9	48			52			
DAMBOVITA	183	1,7	97			82	4		
DOLJ	258	2,4	108			149	1		
GALATI	197	1,9	43			153	1		
GIURGIU	101	0,9	59			42			
GORJ	190	1,8	101			88	1		
HARGHITA	296	2,8	181			115			
HUNEDOARA	255	2,4	64			189	2		
IALOMITA	96	0,9	47			48			1
IASI	362	3,4	114			242	1		5
MARAMURES	244	2,3	106			137	1		
MEHEDINTI	109	1,0	56			53			
MURES	250	2,4	93			154	2	1	
NEAMT	292	2,7	154			136	1	1	
OLT	155	1,5	66			86	3		
PRAHOVA	339	3,2	168			170	1		
SALAJ	117	1,1	60			56	1		
SATU MARE	143	1,3	43			100			
SIBIU	249	2,3	104			144	1		
SUCEAVA	158	1,5	83			74	1		
TELEORMAN	71	0,7	25			44	2		
TIMIS	301	2,8	89		1	208	3		
TULCEA	97	0,9	49	1		46	1		
VASLUI	152	1,4	68			84			
VALCEA	183	1,7	101			81	1		
VRANCEA	129	1,2	61			67	1		
MUN. BUCURESTI	1788	16,8	247			1514	26	1	
ILFOV	206	1,9	16			184	6		

Table no. 10

The number of incorporations in the Trade Register, by field of activity\*  
during the period of December 1990 - July 2003, in total by country and counties,

CAEN segment	Field of activity	Total		out of which:						RA	OC
				PF+AF	companies: 6656						
		No.	%		No.	SNC	SCS	SRL	SA	No.	No.
				No.		No.	No.	No.			
0	1	2	3	4	5	6	7	8	9	10	
	<b>Total ROMÂNIA</b>	<b>10633</b>	<b>100,0</b>	<b>3966</b>	<b>1</b>	<b>1</b>	<b>6561</b>	<b>93</b>	<b>4</b>	<b>7</b>	
1	Agriculture, hunting and related service activities	197	1,9	68			126	3			
2	Forestry, logging and related service activities	64	0,6	9			53	1	1		
5	Fishing, fish farming and related service activities	69	0,6	58			11				
10	Mining of coal and lignite; extraction of peat	1	0,0				1				
11	Extraction of crude petroleum and natural gas; service activities incidental to oil and gas extraction, excluding surveying	1	0,0						1		
12	Mining of uranium and thorium ores										
13	Mining of metal ores										
14	Other mining and quarrying	11	0,1				10	1			
15	Manufacture of food products and beverages	241	2,3	86			154	1			
16	Manufacture of tobacco products	1	0,0				1				
17	Manufacture of textiles	47	0,4	7			40				
18	Manufacture of wearing apparel; dressing and dyeing of fur	115	1,1	39			75	1			
19	Tanning and dressing of leather; manufacture of luggage, handbags, saddlery, harness and footwear	28	0,3	5			23				
20	Manufacture of wood and of products of wood and cork, except furniture; manufacture of articles of straw and plaiting materials	177	1,7	62			111	4			
21	Manufacture of pulp, paper and paper products	17	0,2				17				
22	Publishing, printing and reproduction of recorded media	95	0,9	22			73				
23	Manufacture of coke, refined petroleum products and nuclear fuel	1	0,0				1				
24	Manufacture of chemicals and chemical products	7	0,1				7				
25	Manufacture of rubber and plastic products	35	0,3	2			33				
26	Manufacture of other non-metallic mineral products	79	0,7	39			39	1			
27	Manufacture of basic metals	3	0,0	1			2				
28	Manufacture of fabricated metal products, except machinery and equipment	124	1,2	36			87	1			
29	Manufacture of machinery and equipment n.e.c.	30	0,3	5			19	6			
30	Manufacture of office machinery and computers	3	0,0				3				
31	Manufacture of electrical machinery and apparatus n.e.c.	19	0,2	4			15				
32	Manufacture of radio, television and communication equipment and apparatus	5	0,0	2			3				
33	Manufacture of medical, precision and optical instruments, watches and clocks	21	0,2	3			18				
34	Manufacture of motor vehicles, trailers and semi-trailers	5	0,0				3	2			
35	Manufacture of other transport equipment	10	0,1	1			9				
36	Manufacture of furniture; manufacturing n.e.c.	83	0,8	22			61				
37	Recycling	29	0,3	1			28				
40	Electricity, gas, steam and hot water supply	7	0,1	1			2	4			
41	Collection, purification and distribution of water	3	0,0				1	2			
45	Construction	712	6,7	251			454	7			

\*)Field of activity declared when registered, according to CAEN classification

Table no. 10

(continuance)

The number of incorporations in the Trade Register, by field of activity\*  
during the period of December 1990 - July 2003, in total by country and counties,

CAEN segment	Field of activity	Total		out of which:						
				PF+AF	companies: 6656				RA	OC
		SNC	SCS		SRL	SA				
		No.	%	No.	No.	No.	No.	No.	No.	
0	1	2	3	4	5	6	7	8	9	10
	<b>Total ROMÂNIA</b>	<b>10633</b>	<b>100,0</b>	<b>3966</b>	<b>1</b>	<b>1</b>	<b>6561</b>	<b>93</b>	<b>4</b>	<b>7</b>
50	Sale, maintenance and repair of motor vehicles and motorcycles; retail sale of automotive fuel	297	2,8	102			193	2		
51	Wholesale trade and commission trade, except of motor vehicles and motorcycles	905	8,5	97			800	8		
52	Retail trade, except of motor vehicles and motorcycles; repair of personal and household goods	3033	28,5	1455	1		1568	2		7
55	Hotels and restaurants	438	4,1	113			319	6		
60	Land transport; transport via pipelines	797	7,5	510			282	5		
61	Water transport	6	0,1	2			4			
62	Air transport	1	0,0					1		
63	Supporting and auxiliary transport activities; activities of travel agencies	81	0,8	8			70	1	2	
64	Post and telecommunications	92	0,9	9			81	2		
65	Financial intermediation, except insurance and pension funding	44	0,4	3			31	10		
66	Insurance and pension funding, except compulsory social security	14	0,1	12				2		
67	Activities auxiliary to financial intermediation	78	0,7	46			32			
70	Real estate activities	182	1,7	17			161	4		
71	Renting of machinery and equipment without operator and of personal and household goods	17	0,2	5			12			
72	Computer and related activities	267	2,5	80			187			
73	Research and development	17	0,2	13			2	2		
74	Other business activities	1438	13,5	462		1	967	8		
75	Public administration and defence; compulsory social security	3	0,0	1			1		1	
80	Education	70	0,7	48			22			
85	Health and social work	147	1,4	21			126			
90	Sewage and refuse disposal, sanitation and similar activities	5	0,0	1			3	1		
91	Activities of membership organizations n.e.c.	9	0,1	8			1			
92	Recreational, cultural and sporting activities	193	1,8	67			122	4		
93	Other service activities	254	2,4	159			95			
95	Activities of households as employers of domestic staff	5	0,0	3			2			
99	Extra-territorial organizations and bodies									

\*)Field of activity declared when registered, according to CAEN classification

Table no. 11

**Number of companies registered and the amount  
during the period of December 1990 - July 2003, in total by country and counties,  
in July 2003**

County	Total registered companies		Subscribed capital		Average subscribed capital on company
	No.	%	mil. ROL	%	mil. ROL
0	1	2	3	4	5
<b>Total ROMÂNIA</b>	<b>6656</b>	<b>100,0</b>	<b>2806845,7</b>	<b>100,0</b>	<b>424,1</b>
ALBA	96	1,4	563,4	0,0	6,2
ARAD	177	2,7	11307,0	0,4	63,9
ARGES	136	2,0	36314,4	1,3	267,0
BACAU	133	2,0	32527,4	1,2	246,4
BIHOR	164	2,5	1879,8	0,1	11,5
BISTRITA-NASAUD	59	0,9	1377,0	0,0	23,7
BOTOSANI	61	0,9	160,7	***	2,6
BRASOV	235	3,5	2736,0	0,1	11,7
BRAILA	92	1,4	296,7	0,0	3,3
BUZAU	108	1,6	680,6	0,0	6,4
CARAS-SEVERIN	82	1,2	731,0	0,0	8,9
CALARASI	59	0,9	220,0	***	3,7
CLUJ	384	5,8	7713,5	0,3	20,2
CONSTANTA	309	4,6	57869,4	2,1	189,1
COVASNA	52	0,8	211,3	***	4,1
DAMBOVITA	86	1,3	19073,9	0,7	221,8
DOLJ	150	2,3	39213,5	1,4	263,2
GALATI	154	2,3	394,3	0,0	2,6
GIURGIU	42	0,6	4682,0	0,2	114,2
GORJ	89	1,3	273,5	***	3,1
HARGHITA	115	1,7	690,2	0,0	6,0
HUNEDOARA	191	2,9	502,6	0,0	2,7
IALOMITA	48	0,7	123,0	***	2,6
IASI	243	3,7	3171,8	0,1	13,1
MARAMURES	138	2,1	579,5	0,0	4,2
MEHEDINTI	53	0,8	106,0	***	2,0
MURES	156	2,3	2735,5	0,1	17,5
NEAMT	137	2,1	502,1	0,0	3,7
OLT	89	1,3	370,0	0,0	4,2
PRAHOVA	171	2,6	56005,1	2,0	329,4
SALAJ	57	0,9	1120,2	0,0	20,0
SATU MARE	100	1,5	374,1	0,0	3,7
SIBIU	145	2,2	12697,7	0,5	87,6
SUCEAVA	75	1,1	308,6	0,0	4,2
TELEORMAN	46	0,7	999,1	0,0	21,7
TIMIS	212	3,2	4388,2	0,2	20,7
TULCEA	48	0,7	91141,4	3,2	1898,8
VASLUI	84	1,3	225,0	***	2,7
VALCEA	82	1,2	485,6	0,0	5,9
VRANCEA	68	1,0	791,5	0,0	11,8
MUN. BUCURESTI	1540	23,1	434196,4	15,5	283,2
ILFOV	190	2,9	1977106,9	70,4	10405,8

*Note: The average does not include filials because according to the  
Law no.31/1990 they are not juridical persons*

\*\*\* Less than 0,01%

Table no. 12

**Number of registered companies and the amount  
during the period of December 1990 - July 2003, in total by country and counties,  
in July 2003**

Company type	Total registered companies		Subscribed capital		Average subscribed capital on company
	No.	%	mil. ROL	%	mil. ROL
0	1	2	3	4	5
<b>Total ROMÂNIA</b>	<b>6656</b>	<b>100,0</b>	<b>2806845,7</b>	<b>100,0</b>	<b>424,1</b>
SNC	1	0,0	2,0	***	2,0
SCS	1	0,0	2,5	***	2,5
SA	93	1,4	2559170,3	91,2	37634,9
SRL	6561	98,6	247670,9	8,8	37,8
SCA					

*Note: The average does not include filials because according to the Law no.31/1990 they are not juridical persons*

\*\*\* Less than 0,01%

Diagram no.5

