



MINISTRY OF JUSTICE

THE NATIONAL TRADE REGISTER OFFICE

Bucharest, 2, Octavian Goga Blvd., Sector 3; Phone: 320.60.13; Fax: 320.58.29; Website: www.onrc.ro; E-mail: onrc@onrc.ro

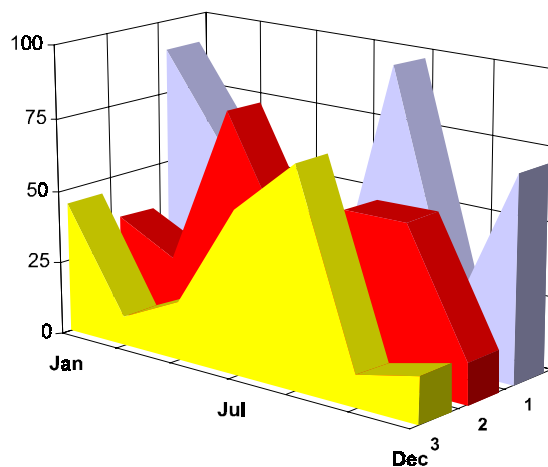
PROCEEDINGS IN THE CENTRAL TRADE REGISTER

STATISTICAL SYNTHESIS

OF

RECORDS IN THE CENTRAL TRADE REGISTER

- the 30st of June 2003 - provisional data -



- ISSUE No. 139 -

MINISTRY OF JUSTICE THE NATIONAL TRADE REGISTER OFFICE

- Operations of incorporation of companies, changes in statutory documents and strike-off of companies are based on Law No.26/1990 reissued, Law No.31/1990, reissued, OUG No.76/2001, reissued and Methodology Norms No. P/608/1998.
- This paper presents the trend in operations registered in The Trade Register Office attached to the law court of Bucharest and in the Trade Register Offices attached to the law court in each county of Romania.
- Information recorded in the Central Trade Register concern operations compulsory by law to be registered in the trade registers within the 42 trade register offices attached to the law courts.

• No part of the content of this publication, in original or in any modified format, may be reproduced, stored in a retrieval system, or transmitted, in any form or by any means, without the prior permission in writing of The Ministry of Justice – The National Trade Register Office.

• The content of this publication may be referred to in articles, studies, books, as supporting or explanatory data under the condition only, the source of the information to be clearly and precisely specified.

Printed: July 2003

Contents

	Page
1 Explanatory Note	1
2.1 Data for December 1990 – June 2003	3
Table no.1 – Operations registered in the Trade Register, by categories during the period of December 1990 – June 2003, in total by country and counties, rate of categories of operations in total operations country	3
Table no.1.a – Operations registered in the Trade Register, by categories during the period of December 1990 – June 2003, in total by country and counties, counties' rate in total country	4
Table no.2 – Status of reissuing the incorporation certificate by exchange of the registration certificate, the 30 of June 2003	5
Table no. 3 – Number and structure of incorporations in the Trade Register, by years, during the period of December 1990- June 2003	6
Table no.4 – The number of incorporations in the Trade Register, by counties and sources of capital, in the period December 1990 - June 2003	7
Table no. 5 – The number of incorporations in the Trade Register, by counties and categories, during the period of December 1990 – June 2003	8
Table no. 6 – The number of incorporations in the Trade Register, by field of activity and categories, during the period of December 1990 - June 2003	9
2.2 Data for June 2003	11
Table no. 7 – Operations carried on with the Trade Registers, by counties and categories, in June 2003	11
Table no. 8 – The number of incorporations in the Trade Register, by counties and sources of capital, in June 2003	12
Table no. 9 – The number of incorporations in the Trade Register, by counties and category in June 2003	13
Table no. 10 –The number of incorporations in the Trade Register, by field of activity and categories in June 2003	14
Table no. 11 – Number of companies registered and the amount of subscribed capital, by county in June 2003	16
Table no. 12– Number of registered companies and the amount of subscribed capital by	17
Diagram no. 5 – Average subscribed capital on company in June 2003	17

Explanatory Note

The Trade Register Office is set-up by Law No. 26/1990, reissued and modified by OUG No. 129/2002, became an active institution since December 1990 and is structured in two levels:

- the national level, represented by the National Trade Register Office organised under the Ministry of Justice
- the local level, represented by the 42 trade register offices attached to the law courts and co-ordinated by the National Trade Register Office

The categories of businessmen compulsory to register in the trade register are:

- natural persons tradesmen and family associations doing usually commercial acts, commercial companies, national companies, companies under state supervision, and co-operative organisations
- subsidiaries registered as commercial companies and legal persons following the legal proceedings of set-up, activity and incorporation according to the type of the legally set-up company.

Usual Terms:

- incorporation – represents the registration of the company in the trade registry awarding the quality of legal person.

- other statutory documents – represent the official registration of the changes occurred in a company's life, such as: changes in headquarters' address, increase or decrease of the issued capital, merger, liquidation, strike-off, etc.

- strike-off – represents the removal of a company from the trade registry, due to dissolution and liquidation, being also the very moment the company loses its quality of legal person. Data also include the companies under the provisions of Law No. 314/2001.

- change of certificate – represents the obligation of companies set-up before OGU No. 76/2001 republished came in force, to request the incorporation certificate and fiscal registration certificate to be replaced with the new registration certificate containing the given unique registration code.

The ratio of these changes is being calculated as a proportion between the effective number of changes and the number of active companies due to operate the change.

- active company from the legal point of view – a company registered in the trade register and which is not affected by any of the situations leading to the temporary or permanently loss of this status (e.g. dissolution, liquidation, strike-off)

- operations represent all the records in the trade registry including incorporations, other statutory documents and strike-off of companies, irrespective of the object of activity, company's type and origin of the subscribed capital (local or foreign investment).

• **Terms used in tables and charts**

➤ **Number of companies:** represents, depending on the specific table, the number of companies incorporated in the related period, the number of companies being struck-off from the trade registry.

➤ **Amount of the subscribed capital:**

- **total, in local currency:** the amount of the subscribed capital resulted from totalising the amount subscribed (in cash and in kind) in local currency (ROL)

➤ **Regional development:**

North-East: Suceava, Botoşani, Neamţ, Iaşi, Bacău, Vaslui.

South-East: Vrancea, Galaţi, Buzău, Brăila, Tulcea, Constanţa.

South-Muntenia: Argeş, Dâmboviţa, Prahova, Teleorman, Giurgiu, Călăraşi, Ialomiţa.

South-West Oltenia: Gorj, Vâlcea, Dolj, Mehedinţi, Olt.

West: Arad, Caraş-Severin, Hunedoara, Timiş.

North-West: Bihor, Bistriţa, Cluj, Satu Mare, Sălaj, Maramureş.

Center: Alba, Braşov, Covasna, Harghita, Mureş, Sibiu.

Bucharest-Ilfov: Bucureşti, Ilfov.

CAEN code – The Classification of Activities in the National Economy was approved by HG No. 656/1997, modified by Order No 601 of the President of National Institute of Statistics being compatible with the international classification used in statistic reports and official documents. Activities are ranked upon homogeneity principle by sections, divisions, groups and clases.

Common abbreviations

- **PF** - Natural Persons Tradesman
- **AF** - Family association
- **SNC** - General Partnership
- **SCS** - Limited Partnership
- **SA** - Joint stock company
- **SRL** - Limited liability company
- **RA** - Company Under State Supervision
- **OC** - Co-operative organisation

Source:

The integrated IT system of the trade registry is designed by The National Trade Registry Office according to the provisions of the related legislation in force. The source of information is the computerised system of the trade registers handled by the Trade Register Offices attached to the law courts.

Table no. 1

**Operations registered in the Trade Register, by categories
during the period of December 1990 - June 2003, in total by country and counties,
- rate of categories of operations in total operations/country -**

Counties	Total of registered operations		out of which :									
			Registered companies		Changes in statutory documents		out of which :				Strike off companies	
	of liquidation, dissolution						out of which :					
	No.	%	No.	%	No.	%	No.	%	No.	%	No.	%
0	1	2	3	4	5	6	7	8	9	10	11	12
Total ROMÂNIA	3214640	100,0	1046665	100,0	1979346	100,0	184936	100,0	175812	100,0	188629	100,0
ALBA	39604	1,2	14914	1,4	24051	1,2	3958	2,1	3596	2,0	639	0,3
ARAD	70253	2,2	23554	2,3	42500	2,1	3302	1,8	2974	1,7	4199	2,2
ARGES	69017	2,1	26244	2,5	41780	2,1	4244	2,3	4120	2,3	993	0,5
BACAU	60941	1,9	27364	2,6	32215	1,6	6285	3,4	5278	3,0	1362	0,7
BIHOR	87450	2,7	30577	2,9	55515	2,8	4832	2,6	4599	2,6	1358	0,7
BISTRITA-NASAUD	36429	1,1	12865	1,2	21453	1,1	1212	0,7	1120	0,6	2111	1,1
BOTOSANI	28423	0,9	12134	1,2	14649	0,7	1641	0,9	1563	0,9	1640	0,9
BRASOV	108661	3,4	32539	3,1	70350	3,6	5018	2,7	4893	2,8	5772	3,1
BRAILA	46168	1,4	14468	1,4	31246	1,6	4588	2,5	4509	2,6	454	0,2
BUZAU	60625	1,9	19485	1,9	38032	1,9	2252	1,2	2109	1,2	3108	1,6
CARAS-SEVERIN	37926	1,2	13336	1,3	21740	1,1	1944	1,1	1922	1,1	2850	1,5
CALARASI	29409	0,9	11352	1,1	16255	0,8	76	0,0			1802	1,0
CLUJ	118441	3,7	44673	4,3	71927	3,6	8268	4,5	8113	4,6	1841	1,0
CONSTANTA	139310	4,3	44939	4,3	82053	4,1	11499	6,2	10621	6,0	12318	6,5
COVASNA	28461	0,9	8937	0,9	17970	0,9	1185	0,6	1175	0,7	1554	0,8
DAMBOVITA	51130	1,6	20852	2,0	25570	1,3	3027	1,6	2951	1,7	4708	2,5
DOLJ	78040	2,4	27722	2,6	43546	2,2	5869	3,2	5634	3,2	6772	3,6
GALATI	91998	2,9	25823	2,5	59559	3,0	5450	2,9	5346	3,0	6616	3,5
GIURGIU	21705	0,7	8569	0,8	10789	0,5	28	0,0			2347	1,2
GORJ	42501	1,3	12969	1,2	26373	1,3	2716	1,5	2667	1,5	3159	1,7
HARGHITA	34650	1,1	12554	1,2	21640	1,1	73	0,0			456	0,2
HUNEDOARA	56037	1,7	21884	2,1	30524	1,5	3057	1,7	2944	1,7	3629	1,9
IALOMITA	32064	1,0	10712	1,0	19155	1,0	1678	0,9	1587	0,9	2197	1,2
IASI	110315	3,4	30991	3,0	75245	3,8	4716	2,6	4227	2,4	4079	2,2
MARAMURES	74669	2,3	28592	2,7	42944	2,2	3081	1,7	2924	1,7	3133	1,7
MEHEDINTI	34093	1,1	12788	1,2	17679	0,9	3138	1,7	3085	1,8	3626	1,9
MURES	66838	2,1	26319	2,5	39626	2,0	3063	1,7	2944	1,7	893	0,5
NEAMT	56733	1,8	22573	2,2	30646	1,5	2750	1,5	2435	1,4	3514	1,9
OLT	42995	1,3	16180	1,5	23694	1,2	2101	1,1	2033	1,2	3121	1,7
PRAHOVA	119809	3,7	33890	3,2	79661	4,0	4197	2,3	3935	2,2	6258	3,3
SALAJ	20382	0,6	8342	0,8	11015	0,6	719	0,4	683	0,4	1025	0,5
SATU MARE	50558	1,6	16970	1,6	30140	1,5	2926	1,6	2918	1,7	3448	1,8
SIBIU	72994	2,3	18484	1,8	51333	2,6	2597	1,4	2584	1,5	3177	1,7
SUCEAVA	72907	2,3	28697	2,7	40589	2,1	2419	1,3	2387	1,4	3621	1,9
TELEORMAN	38920	1,2	12612	1,2	25871	1,3	1548	0,8	1508	0,9	437	0,2
TIMIS	135270	4,2	33832	3,2	93078	4,7	7534	4,1	7273	4,1	8360	4,4
TULCEA	32271	1,0	11749	1,1	18867	1,0	1180	0,6	1003	0,6	1655	0,9
VASLUI	36030	1,1	13259	1,3	21224	1,1	1597	0,9	1386	0,8	1547	0,8
VALCEA	51859	1,6	17670	1,7	31560	1,6	2053	1,1	1888	1,1	2629	1,4
VRANCEA	35272	1,1	12636	1,2	21989	1,1	1686	0,9	1593	0,9	647	0,3
MUN. BUCURESTI	763497	23,8	208164	19,9	491868	24,9	53541	29,0	51406	29,2	63465	33,6
ILFOV	29985	0,9	14451	1,4	13425	0,7	1888	1,0	1879	1,1	2109	1,1

*) according to the effect of Law No. 314/2001, art.1 și art. 6

*** Less than 0,01%

Table no. 1.a

**Operations registered in the Trade Register, by categories
during the period of December 1990 - June 2003, in total by country and counties,
- counties' rate in total country -**

Counties	Total of registered operations		out of which :									
			Registered companies		Changes in statutory documents		out of which :				Strike off companies	
	of liquidation, dissolution						out of which :					
	No.	%	No.	%	No.	%	No.	%	No.	%		
0	1	2	3	4	5	6	7	8	9	10	11	12
Total ROMÂNIA	3214640	100,0	1046665	32,6	1979346	61,6	184936	5,8	175812	5,5	188629	5,9
ALBA	39604	100,0	14914	37,7	24051	60,7	3958	10,0	3596	9,1	639	1,6
ARAD	70253	100,0	23554	33,5	42500	60,5	3302	4,7	2974	4,2	4199	6,0
ARGES	69017	100,0	26244	38,0	41780	60,5	4244	6,1	4120	6,0	993	1,4
BACAU	60941	100,0	27364	44,9	32215	52,9	6285	10,3	5278	8,7	1362	2,2
BIHOR	87450	100,0	30577	35,0	55515	63,5	4832	5,5	4599	5,3	1358	1,6
BISTRITA-NASAUD	36429	100,0	12865	35,3	21453	58,9	1212	3,3	1120	3,1	2111	5,8
BOTOSANI	28423	100,0	12134	42,7	14649	51,5	1641	5,8	1563	5,5	1640	5,8
BRASOV	108661	100,0	32539	29,9	70350	64,7	5018	4,6	4893	4,5	5772	5,3
BRAILA	46168	100,0	14468	31,3	31246	67,7	4588	9,9	4509	9,8	454	1,0
BUZAU	60625	100,0	19485	32,1	38032	62,7	2252	3,7	2109	3,5	3108	5,1
CARAS-SEVERIN	37926	100,0	13336	35,2	21740	57,3	1944	5,1	1922	5,1	2850	7,5
CALARASI	29409	100,0	11352	38,6	16255	55,3	76	0,3			1802	6,1
CLUJ	118441	100,0	44673	37,7	71927	60,7	8268	7,0	8113	6,8	1841	1,6
CONSTANTA	139310	100,0	44939	32,3	82053	58,9	11499	8,3	10621	7,6	12318	8,8
COVASNA	28461	100,0	8937	31,4	17970	63,1	1185	4,2	1175	4,1	1554	5,5
DAMBOVITA	51130	100,0	20852	40,8	25570	50,0	3027	5,9	2951	5,8	4708	9,2
DOLJ	78040	100,0	27722	35,5	43546	55,8	5869	7,5	5634	7,2	6772	8,7
GALATI	91998	100,0	25823	28,1	59559	64,7	5450	5,9	5346	5,8	6616	7,2
GIURGIU	21705	100,0	8569	39,5	10789	49,7	28	0,1			2347	10,8
GORJ	42501	100,0	12969	30,5	26373	62,1	2716	6,4	2667	6,3	3159	7,4
HARGHITA	34650	100,0	12554	36,2	21640	62,5	73	0,2			456	1,3
HUNEDOARA	56037	100,0	21884	39,1	30524	54,5	3057	5,5	2944	5,3	3629	6,5
IALOMITA	32064	100,0	10712	33,4	19155	59,7	1678	5,2	1587	4,9	2197	6,9
IASI	110315	100,0	30991	28,1	75245	68,2	4716	4,3	4227	3,8	4079	3,7
MARAMURES	74669	100,0	28592	38,3	42944	57,5	3081	4,1	2924	3,9	3133	4,2
MEHEDINTI	34093	100,0	12788	37,5	17679	51,9	3138	9,2	3085	9,0	3626	10,6
MURES	66838	100,0	26319	39,4	39626	59,3	3063	4,6	2944	4,4	893	1,3
NEAMT	56733	100,0	22573	39,8	30646	54,0	2750	4,8	2435	4,3	3514	6,2
OLT	42995	100,0	16180	37,6	23694	55,1	2101	4,9	2033	4,7	3121	7,3
PRAHOVA	119809	100,0	33890	28,3	79661	66,5	4197	3,5	3935	3,3	6258	5,2
SALAJ	20382	100,0	8342	40,9	11015	54,0	719	3,5	683	3,4	1025	5,0
SATU MARE	50558	100,0	16970	33,6	30140	59,6	2926	5,8	2918	5,8	3448	6,8
SIBIU	72994	100,0	18484	25,3	51333	70,3	2597	3,6	2584	3,5	3177	4,4
SUCEAVA	72907	100,0	28697	39,4	40589	55,7	2419	3,3	2387	3,3	3621	5,0
TELEORMAN	38920	100,0	12612	32,4	25871	66,5	1548	4,0	1508	3,9	437	1,1
TIMIS	135270	100,0	33832	25,0	93078	68,8	7534	5,6	7273	5,4	8360	6,2
TULCEA	32271	100,0	11749	36,4	18867	58,5	1180	3,7	1003	3,1	1655	5,1
VASLUI	36030	100,0	13259	36,8	21224	58,9	1597	4,4	1386	3,8	1547	4,3
VALCEA	51859	100,0	17670	34,1	31560	60,9	2053	4,0	1888	3,6	2629	5,1
VRANCEA	35272	100,0	12636	35,8	21989	62,3	1686	4,8	1593	4,5	647	1,8
MUN. BUCURESTI	763497	100,0	208164	27,3	491868	64,4	53541	7,0	51406	6,7	63465	8,3
ILFOV	29985	100,0	14451	48,2	13425	44,8	1888	6,3	1879	6,3	2109	7,0

*) according to the effect of Law No. 314/2001, art.1 și art. 6

*** Less than 0,01%

Table no. 2

Status of reissuing the incorporation certificate by exchange of the registration certificate, the 30 of June 2003

County	Companies having to request exchange of certificate		Companies having done the exchange of certificate		Exchange rate (3/1)
	Number	%	Number	%	%
0	1	2	3	4	5
Total of ROMÂNIA	649576	100,0	283763	100,0	43,7
ALBA	9089	1,4	3803	1,3	41,8
ARAD	15374	2,4	5163	1,8	33,6
ARGES	17427	2,7	8135	2,9	46,7
BACAU	19100	2,9	7196	2,5	37,7
BIHOR	18809	2,9	8510	3,0	45,2
BISTRITA-NASAUD	9002	1,4	3648	1,3	40,5
BOTOSANI	8561	1,3	3141	1,1	36,7
BRASOV	17310	2,7	11374	4,0	65,7
BRAILA	8803	1,4	4996	1,8	56,8
BUZAU	13127	2,0	5700	2,0	43,4
CARAS-SEVERIN	8042	1,2	3425	1,2	42,6
CALARASI	7914	1,2	2700	1,0	34,1
CLUJ	21700	3,3	11699	4,1	53,9
CONSTANTA	23142	3,6	11962	4,2	51,7
COVASNA	6400	1,0	3474	1,2	54,3
DAMBOVITA	13340	2,1	5023	1,8	37,7
DOLJ	17009	2,6	7195	2,5	42,3
GALATI	14925	2,3	7079	2,5	47,4
GIURGIU	4723	0,7	2007	0,7	42,5
GORJ	7388	1,1	3272	1,2	44,3
HARGHITA	7994	1,2	3396	1,2	42,5
HUNEDOARA	15320	2,4	5264	1,9	34,4
IALOMITA	6790	1,0	2621	0,9	38,6
IASI	22308	3,4	9544	3,4	42,8
MARAMURES	21494	3,3	9258	3,3	43,1
MEHEDINTI	7769	1,2	2528	0,9	32,5
MURES	17897	2,8	6957	2,5	38,9
NEAMT	15273	2,4	5232	1,8	34,3
OLT	11027	1,7	4576	1,6	41,5
PRAHOVA	21987	3,4	10426	3,7	47,4
SALAJ	5430	0,8	2511	0,9	46,2
SATU MARE	11147	1,7	3959	1,4	35,5
SIBIU	12203	1,9	6092	2,1	49,9
SUCEAVA	21526	3,3	6917	2,4	32,1
TELEORMAN	9105	1,4	4001	1,4	43,9
TIMIS	20049	3,1	9387	3,3	46,8
TULCEA	8177	1,3	3013	1,1	36,8
VASLUI	9161	1,4	3525	1,2	38,5
VALCEA	10858	1,7	5163	1,8	47,6
VRANCEA	7320	1,1	3255	1,1	44,5
MUN. BUCURESTI	118000	18,2	53384	18,8	45,2
ILFOV	7556	1,2	3252	1,1	43,0

Note: Figures in column 1 are being issued in accordance with the methodological note.

*** Sub 0,01%

Table no.3

**Number and structure of incorporations in the Trade Register, by years,
during the period of December 1990 - June 2003**

Period (year, month)	Registered companies	Percentage	
	No.	%	%
0	1	2	3
Total, 30 June 2002,	1046665	100,00	
out of which			
Year 1990	81	0,01	
Year 1991	95840	9,16	
Year 1992	137456	13,13	
Year 1993	117078	11,19	
Year 1994	137445	13,13	
Year 1995	65479	6,26	
Year 1996	62089	5,93	
Year 1997	55663	5,32	
Year 1998	63878	6,10	
Year 1999	57197	5,46	
Year 2000	57291	5,47	
Year 2001	61265	5,85	
Year 2002	84780	8,10	
Year 2003 (1.I - 31.XII),	51123	4,88	100,0
out of which :			
January	6706		13,1
February	8659		16,9
March	8168		16,0
April	8667		17,0
May	8427		16,5
June	10496		20,5

Note: Column 2 reveals the annual structure of incorporations; column 3 reveals the structure by months during the current year.

*** Less than 0,01%

Table no. 4

The number of incorporations in the Trade Register, by counties and sources of capital, in the period December 1990 - June 2003

Counties	Total		out of which:					Ranking by: *	
			Private capital			State majority capital			Mixed capital (state+private)
			out of which:			out of which:			
			PF+AF	Companies	OC	RA	Companies		Companies
No.	%	No.	No.	No.	No.	No.	No.		
0	1	2	3	4	5	6	7	8	9
Total ROMÂNIA	1046665	100,0	205731	823570	5317	1266	2285	8496	X
ALBA	14914	1,4	3673	10861	141	31	38	170	25
ARAD	23555	2,3	7990	15012	155	26	40	332	16
ARGES	26244	2,5	6921	18946	168	29	29	151	14
BACAU	27364	2,6	8634	18275	158	32	42	223	12
BIHOR	30577	2,9	3336	26698	144	31	62	306	8
BISTRITA-NASAUD	12865	1,2	4082	8529	98	18	29	109	31
BOTOSANI	12134	1,2	4150	7553	121	21	170	119	36
BRASOV	32539	3,1	4828	27317	114	36	80	164	6
BRAILA	14468	1,4	2113	12026	95	26	43	165	26
BUZAU	19485	1,9	3856	15290	142	25	42	130	20
CARAS-SEVERIN	13336	1,3	4559	8441	102	33	65	136	28
CALARASI	11352	1,1	2786	8295	86	17	75	93	38
CLUJ	44673	4,3	7097	37076	150	49	40	261	3
CONSTANTA	44939	4,3	5458	38651	202	48	45	535	2
COVASNA	8937	0,9	2120	6586	67	23	32	109	40
DAMBOVITA	20852	2,0	9628	10835	134	29	75	151	19
DOLJ	27722	2,6	3050	24217	161	39	54	201	11
GALATI	25823	2,5	3518	21949	134	28	51	143	15
GIURGIU	8569	0,8	1106	7144	80	20	109	110	41
GORJ	12969	1,2	1769	10787	184	50	79	100	30
HARGHITA	12554	1,2	2523	9665	85	23	30	228	35
HUNEDOARA	21884	2,1	4934	16462	81	37	90	280	18
IALOMITA	10712	1,0	3793	6696	73	15	46	89	39
IASI	30991	3,0	6981	23421	145	32	68	344	7
MARAMURES	28592	2,7	11740	16539	119	34	39	121	10
MEHEDINTI	12788	1,2	2998	9566	82	18	26	98	32
MURES	26319	2,5	9051	16886	154	28	33	167	13
NEAMT	22573	2,2	6795	15402	153	28	30	165	17
OLT	16180	1,5	6016	9793	161	26	61	123	24
PRAHOVA	33890	3,2	7686	25655	177	49	62	261	4
SALAJ	8342	0,8	2283	5846	107	18	27	61	42
SATU MARE	16970	1,6	4077	12613	88	18	40	134	23
SIBIU	18484	1,8	2426	15652	115	26	108	157	21
SUCEAVA	28697	2,7	13281	14906	201	28	61	220	9
TELEORMAN	12612	1,2	3597	8629	151	21	37	177	34
TIMIS	33832	3,2	2296	30948	140	36	68	344	5
TULCEA	11749	1,1	3155	8256	66	18	42	212	37
VASLUI	13259	1,3	6013	6945	109	16	41	135	29
VALCEA	17670	1,7	6024	11290	168	39	37	112	22
VRANCEA	12636	1,2	2562	9815	103	16	27	113	33
MUN. BUCURESTI	208163	19,9	5501	201215	138	109	100	1100	1
ILFOV	14451	1,4	1325	12882	65	20	12	147	27

*) The total number of incorporations (col 1)

*** Less than 0,01%

Table no. 5

**The number of incorporations in the Trade Register,
by counties and categories, during the period of
December 1990 - June 2003**

County	Total		out of which:						RA	OC
			PF+AF	companies: 834351						
	SNC	SCS		SRL	SA	No.	No.			
	No.	%	No.	No.	No.			No.	No.	No.
0	1	2	3	4	5	6	7	8	9	
Total ROMÂNIA	1046665	100,0	205731	32554	1530	771311	28951	1266	5317	
ALBA	14914	1,4	3673	888	11	9655	515	31	141	
ARAD	23554	2,3	7990	48	5	14709	620	26	155	
ARGES	26244	2,5	6921	107	13	18262	744	29	168	
BACAU	27364	2,6	8634	1299	4	16580	656	32	158	
BIHOR	30577	2,9	3336	125	47	26051	843	31	144	
BISTRITA-NASAUD	12865	1,2	4082	146	20	8121	380	18	98	
BOTOSANI	12134	1,2	4150	468	1	6950	423	21	121	
BRASOV	32539	3,1	4828	239	19	26574	729	36	114	
BRAILA	14468	1,4	2113	376	12	11365	481	26	95	
BUZAU	19485	1,9	3856	3745	46	11149	522	25	142	
CARAS-SEVERIN	13336	1,3	4559	113	6	8086	437	33	102	
CALARASI	11352	1,1	2786	609	3	7522	329	17	86	
CLUJ	44673	4,3	7097	2105	18	34184	1070	49	150	
CONSTANTA	44939	4,3	5458	311	23	37543	1354	48	202	
COVASNA	8937	0,9	2120	147	3	6300	277	23	67	
DAMBOVITA	20852	2,0	9628	60	8	10548	445	29	134	
DOLJ	27722	2,6	3050	1557	8	22112	795	39	161	
GALATI	25823	2,5	3518	1574	6	19826	737	28	134	
GIURGIU	8569	0,8	1106	35	8	7013	307	20	80	
GORJ	12969	1,2	1769	28	1	10497	440	50	184	
HARGHITA	12554	1,2	2523	62	6	9401	454	23	85	
HUNEDOARA	21884	2,1	4934	1165	98	14976	593	37	81	
IALOMITA	10712	1,0	3793	266	11	6239	315	15	73	
IASI	30991	3,0	6981	505	111	22305	910	32	145	
MARAMURES	28592	2,7	11740	1925	23	14214	537	34	119	
MEHEDINTI	12788	1,2	2998	427	3	8966	294	18	82	
MURES	26319	2,5	9051	37	34	16409	606	28	154	
NEAMT	22573	2,2	6795	3292	30	11657	618	28	153	
OLT	16180	1,5	6016	1611	1	7904	461	26	161	
PRAHOVA	33890	3,2	7686	3117	12	22057	792	49	177	
SALAJ	8342	0,8	2283	600	4	5064	266	18	107	
SATU MARE	16970	1,6	4077	283	4	12067	433	18	88	
SIBIU	18484	1,8	2426	772	45	14509	591	26	115	
SUCEAVA	28697	2,7	13281	438	8	14210	531	28	201	
TELEORMAN	12612	1,2	3597	271	399	7783	390	21	151	
TIMIS	33832	3,2	2296	573	22	29618	1147	36	140	
TULCEA	11749	1,1	3155	1360	112	6584	454	18	66	
VASLUI	13259	1,3	6013	90	11	6638	382	16	109	
VALCEA	17670	1,7	6024	362	5	10644	428	39	168	
VRANCEA	12636	1,2	2562	356	9	9168	422	16	103	
MUN. BUCURESTI	208164	19,9	5501	1016	292	195353	5754	109	138	
ILFOV	14451	1,4	1325	46	28	12498	469	20	65	

Table no. 6

**The number of incorporations in the Trade Register, by field of activity*
and categories, during the period of
December 1990 - June 2003**

CAEN segment	Field of activity	Total		out of which:						
				PF+AF	companies: 834351				RA	OC
					SNC	SCS	SRL	SA		
					No.	No.	No.	No.		
0	1	2	3	4	5	6	7	8	9	10
	Total ROMÂNIA	1046665	100,0	205731	32554	1530	771311	28951	1266	5317
1	Agriculture, hunting and related service activities	42949	4,1	3801	2023	44	33225	3702	37	117
2	Forestry, logging and related service activities	5625	0,5	610	152	3	4591	214	47	8
5	Fishing, fish farming and related service activities	1199	0,1	419	17	3	708	52		
10	Mining of coal and lignite; extraction of peat	63	0,0	1			46	12	4	
11	Extraction of crude petroleum and natural gas; service activities incidental to oil and gas extraction, excluding surveying	260	0,0	2	1		106	105	46	
12	Mining of uranium and thorium ores	133	0,0	32			95	6		
13	Mining of metal ores	507	0,0	162			284	53	8	
14	Other mining and quarrying	1029	0,1	83	9	1	782	151	2	1
15	Manufacture of food products and beverages	62711	6,0	8462	3260	149	48814	1773	5	248
16	Manufacture of tobacco products	273	0,0	47			195	30	1	
17	Manufacture of textiles	9920	0,9	1669	556	16	7138	397		144
18	Manufacture of wearing apparel; dressing and dyeing of fur	16349	1,6	2939	874	37	11851	343	1	304
19	Tanning and dressing of leather; manufacture of luggage, handbags, saddlery, harness and footwear	4080	0,4	568	112	6	3225	117	1	51
20	Manufacture of wood and of products of wood and cork, except furniture; manufacture of articles of straw and plaiting materials	15866	1,5	3465	574	28	11281	467	9	42
21	Manufacture of pulp, paper and paper products	1312	0,1	63	21	1	1119	95		13
22	Publishing, printing and reproduction of recorded media	8786	0,8	599	317	21	7449	377	13	10
23	Manufacture of coke, refined petroleum products and nuclear fuel	220	0,0	21			165	32	2	
24	Manufacture of chemicals and chemical products	3222	0,3	87	89	1	2671	362	6	6
25	Manufacture of rubber and plastic products	4583	0,4	401	313	7	3587	250		24
26	Manufacture of other non-metallic mineral products	5317	0,5	895	212	6	3832	354	5	13
27	Manufacture of basic metals	2194	0,2	137	39	3	1808	197	3	7
28	Manufacture of fabricated metal products, except machinery and equipment	10191	1,0	1199	361	22	7858	678	11	62
29	Manufacture of machinery and equipment n.e.c.	3024	0,3	51	44	7	2504	394	19	5
30	Manufacture of office machinery and computers	1561	0,1	11	25	3	1442	80		
31	Manufacture of electrical machinery and apparatus n.e.c.	1528	0,1	78	44	5	1258	137		6
32	Manufacture of radio, television and communication equipment and apparatus	692	0,1	18	14	3	586	70		1
33	Manufacture of medical, precision and optical instruments, watches and clocks	1504	0,1	213	16	2	1181	88		4
34	Manufacture of motor vehicles, trailers and semi-trailers	725	0,1	17	31	3	556	116		2
35	Manufacture of other transport equipment	1363	0,1	170	86	7	911	114	73	2
36	Manufacture of furniture; manufacturing n.e.c.	10017	1,0	2099	284	15	7146	311	5	157
37	Recycling	3243	0,3	279	51	5	2745	162		1
40	Electricity, gas, steam and hot water supply	2637	0,3	827	3	1	1264	454	88	
41	Collection, purification and distribution of water	3431	0,3	1602	2		1596	158	73	
45	Construction	42594	4,1	6879	608	41	32728	2209	53	76

Table no. 6
(continuing)

**The number of incorporations in the Trade Register, by field of activity*
and categories, during the period of
December 1990 - June 2003**

CAEN segment	Field of activity	Total		out of which:						
				PF+AF	companies: 834351				RA	OC
					SNC	SCS	SRL	SA		
					No.	No.	No.	No.		
0	1	2	3	4	5	6	7	8	9	10
	Total ROMÂNIA	1046665	100,0	205731	32554	1530	771311	28951	1266	5317
50	Sale, maintenance and repair of motor vehicles and motorcycles; retail sale of automotive fuel	40241	3,8	3750	1242	34	34162	1006	5	42
51	Wholesale trade and commission trade, except of motor vehicles and motorcycles	156474	14,9	9687	4523	147	138722	3079	35	281
52	Retail trade, except of motor vehicles and motorcycles; repair of personal and household goods	377473	36,1	116323	11903	555	243928	2435	5	2323
55	Hotels and restaurants	40094	3,8	9077	1634	126	28418	671	73	95
60	Land transport; transport via pipelines	38984	3,7	10428	842	35	26632	1004	33	10
61	Water transport	709	0,1	114	82	8	374	60	70	1
62	Air transport	254	0,0	17			186	41	10	
63	Supporting and auxiliary transport activities; activities of travel agencies	6677	0,6	299	220	14	5633	408	93	10
64	Post and telecommunications	3304	0,3	132	11	1	2879	267	11	3
65	Financial intermediation, except insurance and pension funding	4350	0,4	123	15		1438	1745	2	1027
66	Insurance and pension funding, except compulsory social security	1791	0,2	528	1		483	778		1
67	Activities auxiliary to financial intermediation	3092	0,3	421	6	2	2405	250		8
70	Real estate activities	7232	0,7	272	28	6	6519	384	17	6
71	Renting of machinery and equipment without operator and of personal and household goods	1871	0,2	289	116	8	1302	85	70	1
72	Computer and related activities	10620	1,0	913	111	12	9243	336	2	3
73	Research and development	1196	0,1	137	11	2	851	151	42	2
74	Other business activities	45496	4,3	6658	738	61	36472	1402	106	58
75	Public administration and defence; compulsory social security	302	0,0	58	5		198	23	17	1
80	Education	3332	0,3	1369	62	5	1834	62		
85	Health and social work	10419	1,0	1600	232	15	8496	72	3	1
90	Sewage and refuse disposal, sanitation and similar activities	461	0,0	29	13	2	315	83	18	
91	Activities of membership organizations n.e.c.	152	0,0	50	1		85	13		3
92	Recreational, cultural and sporting activities	8141	0,8	1182	197	14	6444	226	66	12
93	Other service activities	14478	1,4	4211	417	42	9302	305	76	124
95	Activities of households as employers of domestic staff	361	0,0	128	6	1	222	3		1
99	Extra-territorial organizations and bodies	53	0,0	30			21	2		

*)Field of activity declared when registered, according to CAEN classification

Table no. 7

**Operations carried on with the Trade Registers,
by counties and categories,
in June 2003**

County	Total of operations carried on		out of which:							
			New incorporations		Changes in statutory documents		out of which: of liquidation, dissolution		Strike off companies	
	No.	%	No.	%	No.	%	No.	%	No.	%
0	1	2	3	4	5	6	7	8	9	10
Total ROMÂNIA	38998	100,0	10496	26,9	27665	70,9	305	0,8	837	2,1
ALBA	576	100,0	184	31,9	358	62,2	7	1,2	34	5,9
ARAD	333	100,0	219	65,8	104	31,2	3	0,9	10	3,0
ARGES	780	100,0	265	34,0	472	60,5	98	12,6	43	5,5
BACAU	393	100,0	251	63,9	120	30,5	9	2,3	22	5,6
BIHOR	1465	100,0	412	28,1	1008	68,8	24	1,6	45	3,1
BISTRITA-NASAUD	505	100,0	117	23,2	345	68,3	3	0,6	43	8,5
BOTOSANI	357	100,0	149	41,7	200	56,0	2	0,6	8	2,2
BRASOV	1363	100,0	385	28,2	971	71,2	1	0,1	7	0,5
BRAILA	554	100,0	184	33,2	346	62,5	3	0,5	24	4,3
BUZAU	612	100,0	167	27,3	430	70,3	5	0,8	15	2,5
CARAS-SEVERIN	443	100,0	126	28,4	300	67,7	1	0,2	17	3,8
CALARASI	416	100,0	76	18,3	331	79,6	7	1,7	9	2,2
CLUJ	2150	100,0	536	24,9	1573	73,2	5	0,2	41	1,9
CONSTANTA	2076	100,0	471	22,7	1586	76,4	21	1,0	19	0,9
COVASNA	328	100,0	83	25,3	239	72,9	1	0,3	6	1,8
DAMBOVITA	746	100,0	167	22,4	536	71,8	4	0,5	43	5,8
DOLJ	897	100,0	283	31,5	590	65,8	2	0,2	24	2,7
GALATI	953	100,0	220	23,1	714	74,9	4	0,4	19	2,0
GIURGIU	370	100,0	83	22,4	283	76,5			4	1,1
GORJ	607	100,0	141	23,2	456	75,1			10	1,6
HARGHITA	1027	100,0	244	23,8	757	73,7	5	0,5	26	2,5
HUNEDOARA	739	100,0	154	20,8	573	77,5	5	0,7	12	1,6
IALOMITA	287	100,0	102	35,5	170	59,2	2	0,7	15	5,2
IASI	1437	100,0	359	25,0	1030	71,7	3	0,2	48	3,3
MARAMURES	1086	100,0	182	16,8	880	81,0	4	0,4	24	2,2
MEHEDINTI	240	100,0	104	43,3	118	49,2	2	0,8	18	7,5
MURES	1286	100,0	262	20,4	1010	78,5			14	1,1
NEAMT	747	100,0	282	37,8	451	60,4	3	0,4	14	1,9
OLT	488	100,0	167	34,2	293	60,0	7	1,4	28	5,7
PRAHOVA	1244	100,0	334	26,8	894	71,9	4	0,3	16	1,3
SALAJ	377	100,0	122	32,4	240	63,7	2	0,5	15	4,0
SATU MARE	804	100,0	147	18,3	643	80,0	1	0,1	14	1,7
SIBIU	765	100,0	246	32,2	507	66,3			12	1,6
SUCEAVA	454	100,0	195	43,0	241	53,1	3	0,7	18	4,0
TELEORMAN	448	100,0	93	20,8	352	78,6	2	0,4	3	0,7
TIMIS	1285	100,0	277	21,6	997	77,6	5	0,4	11	0,9
TULCEA	160	100,0	96	60,0	48	30,0	3	1,9	16	10,0
VASLUI	379	100,0	129	34,0	217	57,3	10	2,6	33	8,7
VALCEA	855	100,0	300	35,1	545	63,7	4	0,5	10	1,2
VRANCEA	413	100,0	113	27,4	285	69,0	3	0,7	15	3,6
MUN. BUCURESTI	8130	100,0	1860	22,9	6259	77,0	37	0,5	11	0,1
ILFOV	423	100,0	209	49,4	193	45,6			21	5,0

*) by effect of implementation of Law no. 314/2001, art.1 and art. 6

*** Less than 0,01%

Table no. 8

**The number of incorporations in the Trade Register,
by counties and sources of capital,
in June 2003**

County	Total		out of which:					Rnking by: *	
			Private capital			State majority capital			Mixed capital (state+private)
			out of which:			out of which:			
			PF+AF	Companies	OC	RA	Companies		Companies
No.	%	No.	No.	No.	No.	No.	No.		
0	1	2	3	4	5	6	7	8	9
Total ROMÂNIA	10496	100,0	3838	6641	10	3	1	3	X
ALBA	184	1,8	90	94					21
ARAD	219	2,1	112	107					18
ARGES	265	2,5	112	153					12
BACAU	251	2,4	84	167					14
BIHOR	412	3,9	227	185					4
BISTRITA-NASAUD	117	1,1	40	77					34
BOTOSANI	149	1,4	93	56					28
BRASOV	385	3,7	178	207					5
BRAILA	184	1,8	104	80					22
BUZAU	167	1,6	67	100					24
CARAS-SEVERIN	126	1,2	33	92				1	32
CALARASI	76	0,7	38	37		1			42
CLUJ	536	5,1	150	386					2
CONSTANTA	471	4,5	192	278				1	3
COVASNA	83	0,8	49	34					40
DAMBOVITA	167	1,6	68	98		1			25
DOLJ	283	2,7	97	186					9
GALATI	220	2,1	74	146					17
GIURGIU	83	0,8	39	44					41
GORJ	141	1,3	83	58					30
HARGHITA	244	2,3	156	88					16
HUNEDOARA	154	1,5	45	109					27
IALOMITA	102	1,0	57	45					37
IASI	359	3,4	97	252	9			1	6
MARAMURES	182	1,7	81	101					23
MEHEDINTI	104	1,0	52	52					36
MURES	262	2,5	97	165					13
NEAMT	282	2,7	113	168			1		10
OLT	167	1,6	77	90					26
PRAHOVA	334	3,2	160	174					7
SALAJ	122	1,2	58	64					33
SATU MARE	147	1,4	44	103					29
SIBIU	246	2,3	107	139					15
SUCEAVA	195	1,9	93	102					20
TELEORMAN	93	0,9	36	57					39
TIMIS	277	2,6	47	230					11
TULCEA	96	0,9	47	49					38
VASLUI	129	1,2	69	60					31
VALCEA	300	2,9	202	98					8
VRANCEA	113	1,1	41	72					35
MUN. BUCURESTI	1860	17,7	219	1640		1			1
ILFOV	209	2,0	10	198	1				19

*) The total number of incorporations (col 1)

*** Less than 0,01%

Table no.9

**The number of incorporations in the Trade Register,
by counties and category
in June 2003**

County	Total		out of which:						RA	OC
			PF+AF	companies: 6645						
	SNC	SCS		SRL	SA	No.	No.			
	No.	%	No.	No.	No.			No.	No.	No.
0	1	2	3	4	5	6	7	8	9	
Total ROMÂNIA	10496	100,0	3838	6	3	6568	68	3	10	
ALBA	184	1,8	90			94				
ARAD	219	2,1	112			106	1			
ARGES	265	2,5	112			152	1			
BACAU	251	2,4	84			167				
BIHOR	412	3,9	227			183	2			
BISTRITA-NASAUD	117	1,1	40			77				
BOTOSANI	149	1,4	93			56				
BRASOV	385	3,7	178			204	3			
BRAILA	184	1,8	104			80				
BUZAU	167	1,6	67			97	3			
CARAS-SEVERIN	126	1,2	33			92	1			
CALARASI	76	0,7	38			35	2	1		
CLUJ	536	5,1	150			384	2			
CONSTANTA	471	4,5	192			274	5			
COVASNA	83	0,8	49			34				
DAMBOVITA	167	1,6	68	1		96	1	1		
DOLJ	283	2,7	97			185	1			
GALATI	220	2,1	74			146				
GIURGIU	83	0,8	39			44				
GORJ	141	1,3	83			57	1			
HARGHITA	244	2,3	156			86	2			
HUNEDOARA	154	1,5	45			109				
IALOMITA	102	1,0	57			44	1			
IASI	359	3,4	97			250	3		9	
MARAMURES	182	1,7	81	1		100				
MEHEDINTI	104	1,0	52			51	1			
MURES	262	2,5	97			165				
NEAMT	282	2,7	113			169				
OLT	167	1,6	77			90				
PRAHOVA	334	3,2	160	4		168	2			
SALAJ	122	1,2	58			64				
SATU MARE	147	1,4	44			103				
SIBIU	246	2,3	107		2	134	3			
SUCEAVA	195	1,9	93			102				
TELEORMAN	93	0,9	36			56	1			
TIMIS	277	2,6	47			226	4			
TULCEA	96	0,9	47			48	1			
VASLUI	129	1,2	69			60				
VALCEA	300	2,9	202			98				
VRANCEA	113	1,1	41			72				
MUN. BUCURESTI	1860	17,7	219			1617	23	1		
ILFOV	209	2,0	10		1	193	4		1	

Table no. 10

**The number of incorporations in the Trade Register, by field of activity*
and categories in June 2003**

CAEN segment	Field of activity	Total		out of which:						
				PF+AF	companies: 6645				RA	OC
					SNC	SCS	SRL	SA		
					No.	No.	No.	No.		
0	1	2	3	4	5	6	7	8	9	10
	Total ROMÂNIA	10496	100,0	3838	6	3	6568	68	3	10
1	Agriculture, hunting and related service activities	207	2,0	82			125			
2	Forestry, logging and related service activities	65	0,6	6			58		1	
5	Fishing, fish farming and related service activities	30	0,3	27			3			
10	Mining of coal and lignite; extraction of peat	1	0,0				1			
11	Extraction of crude petroleum and natural gas; service activities incidental to oil and gas extraction, excluding surveying	1	0,0					1		
12	Mining of uranium and thorium ores									
13	Mining of metal ores									
14	Other mining and quarrying	6	0,1				6			
15	Manufacture of food products and beverages	218	2,1	74			144			
16	Manufacture of tobacco products									
17	Manufacture of textiles	45	0,4	10			35			
18	Manufacture of wearing apparel; dressing and dyeing of fur	108	1,0	33			72	2		1
19	Tanning and dressing of leather; manufacture of luggage, handbags, saddlery, harness and footwear	17	0,2	3			14			
20	Manufacture of wood and of products of wood and cork, except furniture; manufacture of articles of straw and plaiting materials	159	1,5	61			96	2		
21	Manufacture of pulp, paper and paper products	14	0,1	1			12	1		
22	Publishing, printing and reproduction of recorded media	81	0,8	18			63			
23	Manufacture of coke, refined petroleum products and nuclear fuel	1	0,0				1			
24	Manufacture of chemicals and chemical products	7	0,1	1			6			
25	Manufacture of rubber and plastic products	31	0,3	4			27			
26	Manufacture of other non-metallic mineral products	98	0,9	54			44			
27	Manufacture of basic metals	6	0,1				5	1		
28	Manufacture of fabricated metal products, except machinery and equipment	91	0,9	25			64	2		
29	Manufacture of machinery and equipment n.e.c.	23	0,2	1			22			
30	Manufacture of office machinery and computers	10	0,1				10			
31	Manufacture of electrical machinery and apparatus n.e.c.	9	0,1			1	8			
32	Manufacture of radio, television and communication equipment and apparatus	4	0,0				4			
33	Manufacture of medical, precision and optical instruments, watches and clocks	25	0,2	12			12	1		
34	Manufacture of motor vehicles, trailers and semi- trailers	4	0,0				3	1		
35	Manufacture of other transport equipment	5	0,0				5			
36	Manufacture of furniture; manufacturing n.e.c.	102	1,0	32			70			
37	Recycling	27	0,3	4			23			
40	Electricity, gas, steam and hot water supply	5	0,0	1			3	1		
41	Collection, purification and distribution of water	2	0,0						2	
45	Construction	702	6,7	223			1	469	9	

*)Field of activity declared when registered, according to CAEN classification

Table no. 10
(continuance)

**The number of incorporations in the Trade Register, by field of activity*
and categories in June 2003**

CAEN segment	Field of activity	Total		out of which:						
				PF+AF	companies: 6645				RA	OC
					SNC	SCS	SRL	SA		
					No.	No.	No.	No.		
0	1	2	3	4	5	6	7	8	9	10
	Total ROMÂNIA	10496	100,0	3838	6	3	6568	68	3	10
50	Sale, maintenance and repair of motor vehicles and motorcycles; retail sale of automotive fuel	294	2,8	100			193	1		
51	Wholesale trade and commission trade, except of motor vehicles and motorcycles	871	8,3	84		1	779	7		
52	Retail trade, except of motor vehicles and motorcycles; repair of personal and household goods	2831	27,0	1305	2		1514	1		9
55	Hotels and restaurants	468	4,5	118			347	3		
60	Land transport; transport via pipelines	812	7,7	507			300	5		
61	Water transport	5	0,0				5			
62	Air transport	2	0,0				2			
63	Supporting and auxiliary transport activities; activities of travel agencies	65	0,6	5			59	1		
64	Post and telecommunications	80	0,8	11			67	2		
65	Financial intermediation, except insurance and pension funding	43	0,4	1			37	5		
66	Insurance and pension funding, except compulsory social security	28	0,3	24			1	3		
67	Activities auxiliary to financial intermediation	96	0,9	55			41			
70	Real estate activities	208	2,0	10			195	3		
71	Renting of machinery and equipment without operator and of personal and household goods	26	0,2	6			20			
72	Computer and related activities	297	2,8	83			214			
73	Research and development	12	0,1	6			6			
74	Other business activities	1527	14,5	511	4		1001	11		
75	Public administration and defence; compulsory social security	2	0,0	2						
80	Education	84	0,8	65			19			
85	Health and social work	157	1,5	25			130	2		
90	Sewage and refuse disposal, sanitation and similar activities	7	0,1				7			
91	Activities of membership organizations n.e.c.	7	0,1	6			1			
92	Recreational, cultural and sporting activities	190	1,8	71			116	3		
93	Other service activities	273	2,6	165			108			
95	Activities of households as employers of domestic staff	7	0,1	6			1			
99	Extra-territorial organizations and bodies									

*)Field of activity declared when registered, according to CAEN classification

Table no. 11

**Number of companies registered and the amount
of subscribed capital, by county
in June 2003**

County	Total registered companies		Subscribed capital		Average subscribed capital on company
	No.	%	mil. ROL	%	mil. ROL
0	1	2	3	4	5
Total ROMÂNIA	6645	100,0	1623395,8	100,0	246,4
ALBA	94	1,4	1163,2	0,1	12,5
ARAD	107	1,6	702,3	0,0	6,6
ARGES	153	2,3	839,4	0,1	5,7
BACAU	167	2,5	461,7	0,0	2,8
BIHOR	185	2,8	5454,5	0,3	29,6
BISTRITA-NASAUD	77	1,2	432,9	0,0	5,6
BOTOSANI	56	0,8	636,0	0,0	11,8
BRASOV	207	3,1	2748,1	0,2	13,6
BRAILA	80	1,2	898,1	0,1	11,2
BUZAU	100	1,5	17562,1	1,1	175,6
CARAS-SEVERIN	93	1,4	6841,7	0,4	73,6
CALARASI	37	0,6	89,0	***	2,5
CLUJ	386	5,8	9111,9	0,6	23,7
CONSTANTA	279	4,2	53310,7	3,3	192,5
COVASNA	34	0,5	96,2	***	3,0
DAMBOVITA	98	1,5	39803,0	2,5	414,6
DOLJ	186	2,8	2265,9	0,1	12,2
GALATI	146	2,2	429,0	0,0	2,9
GIURGIU	44	0,7	168,2	0,0	3,8
GORJ	58	0,9	144,7	***	2,6
HARGHITA	88	1,3	64266,5	4,0	730,3
HUNEDOARA	109	1,6	260,8	0,0	2,4
IALOMITA	45	0,7	128,1	***	2,9
IASI	253	3,8	20271,8	1,2	80,1
MARAMURES	101	1,5	367,6	0,0	3,7
MEHEDINTI	52	0,8	208,2	0,0	4,2
MURES	165	2,5	4545,0	0,3	27,5
NEAMT	169	2,5	456,0	0,0	2,7
OLT	90	1,4	456,0	0,0	5,1
PRAHOVA	174	2,6	12417,2	0,8	71,4
SALAJ	64	1,0	213,8	0,0	3,3
SATU MARE	103	1,6	344,4	0,0	3,4
SIBIU	139	2,1	732550,6	45,1	5386,4
SUCEAVA	102	1,5	1361,2	0,1	13,5
TELEORMAN	57	0,9	1872,0	0,1	33,4
TIMIS	230	3,5	2093,4	0,1	9,2
TULCEA	49	0,7	9144,2	0,6	186,6
VASLUI	60	0,9	217,1	0,0	3,7
VALCEA	98	1,5	2113,9	0,1	21,6
VRANCEA	72	1,1	574,0	0,0	8,0
MUN. BUCURESTI	1640	24,7	76994,8	4,7	47,3
ILFOV	198	3,0	549380,7	33,8	2788,7

Note: The average does not include filials because according to the Law no.31/1990 they are not juridical persons

*** Less than 0,01%

**Number of registered companies and the amount
of subscribed capital by category,
in June 2003**

Company type	Total registered companies		Subscribed capital		Average subscribed capital on company
	No.	%	mil. ROL	%	mil. ROL
0	1	2	3	4	5
Total ROMÂNIA	6645	100,0	1623395,8	100,0	246,3
SNC	6	0,1	3,40	***	0,6
SCS	3	0,0	11722,91	0,7	
SA	68	1,0	1425696,46	87,8	27954,8
SRL	6568	98,8	185973,02	11,5	28,5
SCA					

Note: The average does not include filials because according to the Law no.31/1990 they are not juridical persons

*** Less than 0,01%

Diagram no.5

