



MINISTRY OF JUSTICE

THE NATIONAL TRADE REGISTER OFFICE

Bucharest, 2, Octavian Goga Blvd., Sector 3; Phone: 320.60.13; Fax: 320.58.29; Website: www.onrc.ro; E-mail: onrc@onrc.ro

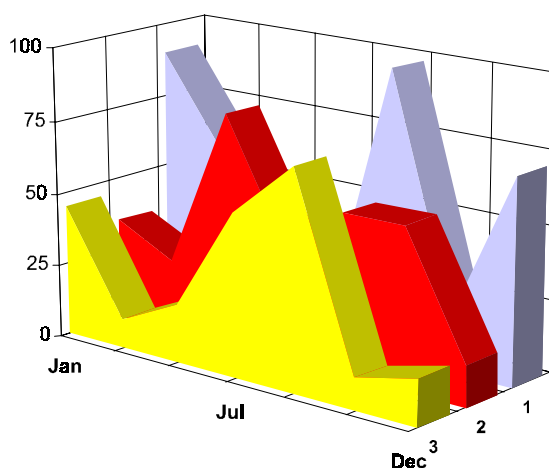
PROCEEDINGS IN THE CENTRAL TRADE REGISTER

STATISTICAL SYNTHESIS

OF

RECORDS IN THE CENTRAL TRADE REGISTER

- the 31st of May, 2003 - provisional data -



- ISSUE No. 138 -

MINISTRY OF JUSTICE THE NATIONAL TRADE REGISTER OFFICE

- Operations of incorporation of companies, changes in statutory documents and strike-off of companies are based on Law No.26/1990 reissued, Law No.31/1990, reissued, OUG No.76/2001, reissued and Methodology Norms No. P/608/1998.
- This paper presents the trend in operations registered in The Trade Register Office attached to the law court of Bucharest and in the Trade Register Offices attached to the law court in each county of Romania.
- Information recorded in the Central Trade Register concern operations compulsory by law to be registered in the trade registers within the 42 trade register offices attached to the law courts.

• No part of the content of this publication, in original or in any modified format, may be reproduced, stored in a retrieval system, or transmitted, in any form or by any means, without the prior permission in writing of The Ministry of Justice – The National Trade Register Office.

• The content of this publication may be referred to in articles, studies, books, as supporting or explanatory data under the condition only, the source of the information to be clearly and precisely specified.

Printed: July 2003

Contents

	Page
1 Explanatory Note	1
2 General Overview	3
Diagram no. 1 – Yearly percentage of new registered companies in the Trade Registry	3
Diagram no. 2 – Structure of incorporations by type of company during 1991 - May 2003	4
Diagram no. 3 – Structure of incorporations by type of companies in May 2003	5
Diagram no. 4 – Structure of invested capital during May 2003, by type of company	6
3 Tables and statistical graphics	8
3.1 Data for December 1990 – May 2003	8
Table no.1 – Operations registered in the Trade Register, by categories during the period of December 1990 – May 2003, in total by country and counties, rate of categories of operations in total operations country	8
Table no.1.a – Operations registered in the Trade Register, by categories during the period of December 1990 – May 2003, in total by country and counties, counties’ rate in total country	9
Table no.2 – Status of reissuing the incorporation certificate by exchange of the registration certificate, the 31 of May 2003	10
Table no. 3 – Number and structure of incorporations in the Trade Register, by years, during the period of December 1990- May 2003	11
Table no.4 – The number of incorporations in the Trade Register, by counties and sources of capital, in the period December 1990 - May 2003	12
Table no. 5 – The number of incorporations in the Trade Register, by counties and categories, during the period of December 1990 – May 2003	13
Table no. 6 – The number of incorporations in the Trade Register, by field of activity and categories, during the period of December 1990 - May 2003	14

3.2 Data for May 2003	16
Table no. 7 – Operations carried on with the Trade Registers, by counties and categories, in May 2003	16
Table no. 8 – The number of incorporations in the Trade Register, by counties and sources of capital, in May 2003	17
	Page
Table no. 9 – The number of incorporations in the Trade Register, by counties and category in May 2003	18
Table no. 10 – The number of incorporations in the Trade Register, by field of activity and categories in May 2003	19
Table no. 11 – Number of companies registered and the amount of subscribed capital, by county in May 2003	21
Table no. 12 – Number of registered companies and the amount of subscribed capital by category, in May 2003	22
Diagram no. 5 – Average subscribed capital on company in May 2003	22

Explanatory Note

The Trade Register Office is set-up by Law No. 26/1990, reissued and modified by OUG No. 129/2002, became an active institution since December 1990 and is structured in two levels:

- the national level, represented by the National Trade Register Office organised under the Ministry of Justice
- the local level, represented by the 42 trade register offices attached to the law courts and co-ordinated by the National Trade Register Office

The categories of businessmen compulsory to register in the trade register are:

- natural persons tradesmen and family associations doing usually commercial acts, commercial companies, national companies, companies under state supervision, and co-operative organisations
- subsidiaries registered as commercial companies and legal persons following the legal proceedings of set-up, activity and incorporation according to the type of the legally set-up company.

Usual Terms:

- incorporation – represents the registration of the company in the trade registry awarding the quality of legal person.

- other statutory documents – represent the official registration of the changes occurred in a company's life, such as: changes in headquarters' address, increase or decrease of the issued capital, merger, liquidation, strike-off, etc.

- strike-off – represents the removal of a company from the trade registry, due to dissolution and liquidation, being also the very moment the company loses its quality of legal person. Data also include the companies under the provisions of Law No. 314/2001.

- change of certificate – represents the obligation of companies set-up before OGU No. 76/2001 republished came in force, to request the incorporation certificate and fiscal registration certificate to be replaced with the new registration certificate containing the given unique registration code.

The ratio of these changes is being calculated as a proportion between the effective number of changes and the number of active companies due to operate the change.

- active company from the legal point of view – a company registered in the trade register and which is not affected by any of the situations leading to the temporary or permanently loss of this status (e.g. dissolution, liquidation, strike-off)

- operations represent all the records in the trade registry including incorporations, other statutory documents and strike-off of companies, irrespective of the object of activity, company's type and origin of the subscribed capital (local or foreign investment).

• **Terms used in tables and charts**

➤ **Number of companies:** represents, depending on the specific table, the number of companies incorporated in the related period, the number of companies being struck-off from the trade registry.

➤ **Amount of the subscribed capital:**

- **total, in local currency:** the amount of the subscribed capital resulted from totalising the amount subscribed (in cash and in kind) in local currency (ROL)

➤ **Regional development:**

North-East: Suceava, Botoşani, Neamţ, Iaşi, Bacău, Vaslui.

South-East: Vrancea, Galaţi, Buzău, Brăila, Tulcea, Constanţa.

South-Muntenia: Argeş, Dâmboviţa, Prahova, Teleorman, Giurgiu, Călăraşi, Ialomiţa.

South-West Oltenia: Gorj, Vâlcea, Dolj, Mehedinţi, Olt.

West: Arad, Caraş-Severin, Hunedoara, Timiş.

North-West: Bihor, Bistriţa, Cluj, Satu Mare, Sălaj, Maramureş.

Center: Alba, Braşov, Covasna, Harghita, Mureş, Sibiu.

Bucharest-Ilfov: Bucureşti, Ilfov.

CAEN code – The Classification of Activities in the National Economy was approved by HG No. 656/1997, modified by Order No 601 of the President of National Institute of Statistics being compatible with the international classification used in statistic reports and official documents. Activities are ranked upon homogeneity principle by sections, divisions, groups and clases.

Common abbreviations

- **PF** - Natural Persons Tradesman
- **AF** - Family association
- **SNC** - General Partnership
- **SCS** - Limited Partnership
- **SA** - Joint stock company
- **SRL** - Limited liability company
- **RA** - Company Under State Supervision
- **OC** - Co-operative organisation

Source:

The integrated IT system of the trade registry is designed by The National Trade Registry Office according to the provisions of the related legislation in force. The source of information is the computerised system of the trade registers handled by the Trade Register Offices attached to the law courts.

GENERAL OVERVIEW

The statistical synthesis “Operations in the Central Trade Register” includes the results of operations recorded in the Central Trade Register until end of May 2003, upgraded on the basis of data forwarded by the Trade Register Offices in the counties.

Based on the provisional data, this paper shows the trend in the development of the business community in Romania, whatever the sector of activity, type of company and origin of the subscribed capital (local or foreign) is, as result of operations due to the legislation in force concerning the trade register, as:

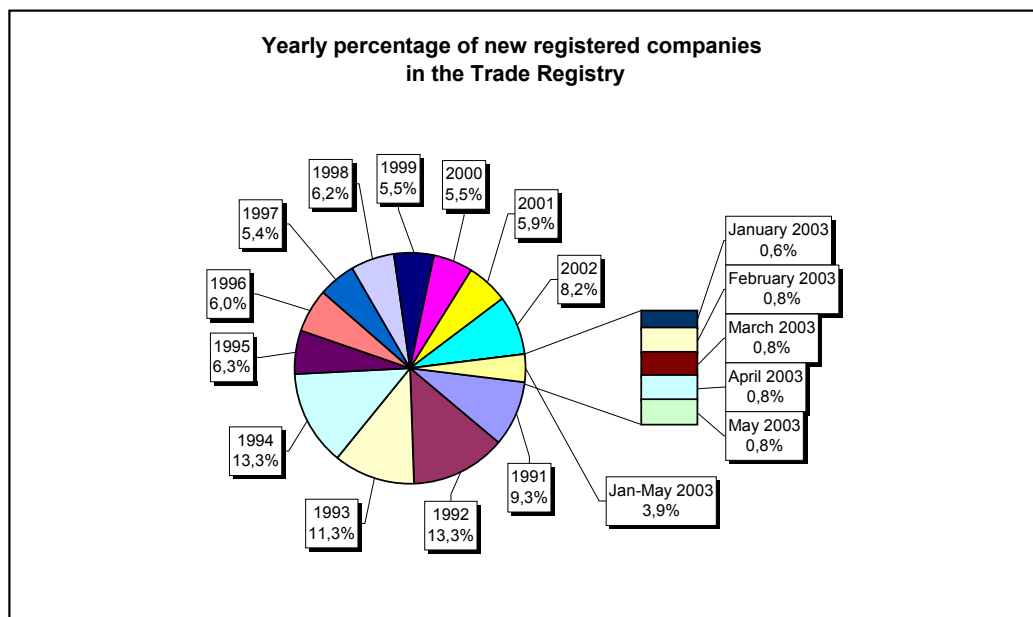
- incorporation of new companies;
- changes in statutory documents of existing companies;
- liquidation/dissolutions of companies;
- strike-off of companies;
- reissuing of registration certificates by replacement of old certificates

The present statistical synthesis does not reveal the operations concerning companies by foreign direct investment in particular, but these data are included in the general data presented hereby.

The following main aspects are highlighted through this paper:

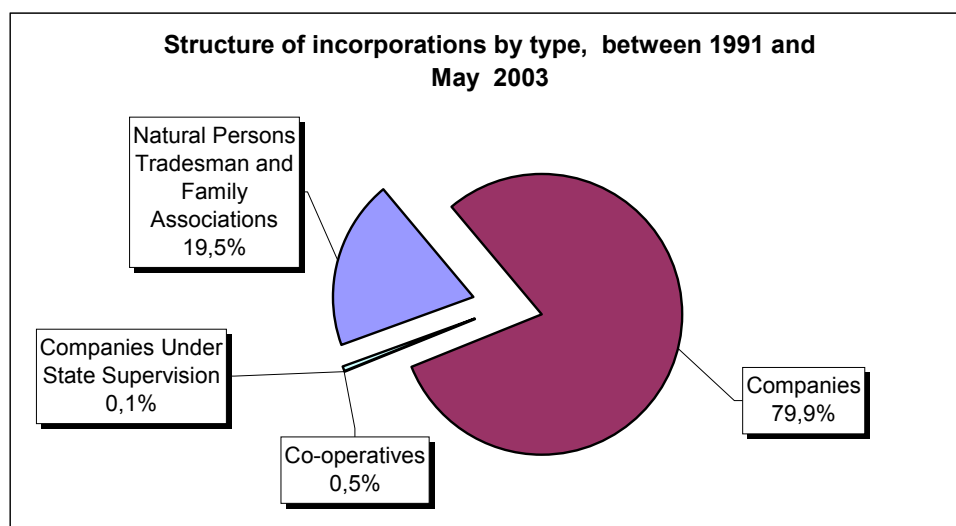
- In the period December 1990 - May 2003:
 - ✓ The total number of records in the trade registers was of 3,175,642, structured as follows: incorporations 32.6%, changes in statutory documents 61.5% and strike-off documents 5.9% (Table no. 1.a).
 - ✓ The structure by years of the number of incorporations in the trade registers, as it is showed in the diagram below, reveals the fact that around 55% of total incorporations were registered in the period of December 1990 – 1995 (Table nr 3).

Diagram no.1



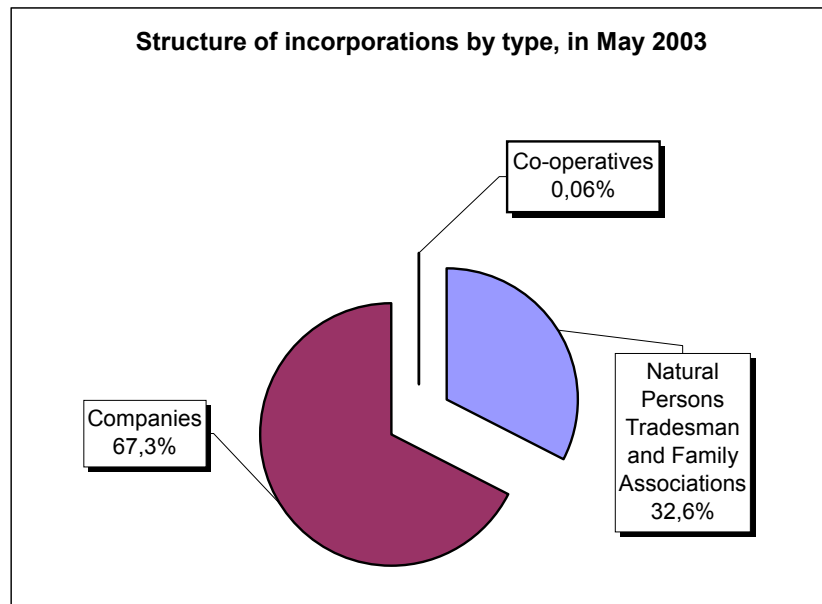
- ✓ In what concerns the origin of the issued capital, in the related period, from the total of 1,036,169 incorporations, 1,024,129 (98.84%) are companies registered by private capital, 3,547 (0.34%) by majority state capital and the rest of 8,493 (0.82%) by mixed capital (state + private).
- ✓ The structure by type of incorporations during the same period is the following: 201,893 natural persons tradesman and family associations, 827,706 companies, 1,263 companies under State supervision and 5,307 co-operative organisations (Table no. 5).

Diagram no. 2



- ✓ Between January - May 2003, 40,627 new companies were incorporated representing 3.9% of total incorporations in the period December 1990 - May 2003.
- In May 2003:
 - ✓ The total number of records is 36,451 of which 8,427 are incorporations (23.12%), 26,961 changes in statutory documents (73.97%) and 1,063 strike-off of companies (2.92%). The highest number of incorporations in May 2003 was registered in Bucharest Municipality, that is 1,370 incorporations of new companies (17.3% of total operations). The number of changes in statutory documents recorded in Bucharest Trade Register Office, in May 2003, was of 6,491 (82.1% of total operations) (Table no. 7).
 - ✓ The structure by type of incorporations in May is the following: 2,748 (32.6%) natural persons tradesman and family associations, 5,674 (67.3%) companies and 5 co-operative. (Table no. 9)

Diagram no. 3



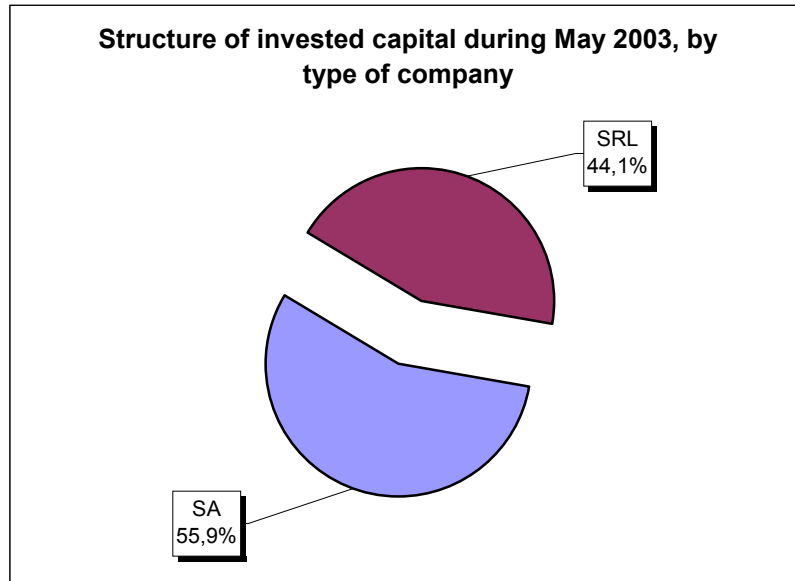
In what concerns the origin of the issued capital, from the total of 8,427 incorporations, 8,422 are companies by private capital, 1 by state capital and 4 by mixt capital (state+private) (Table no. 8).

- ✓ With regard to the number of the incorporated companies and the amount of the subscribed capital, according to their legal status, 5,587 of the total number of incorporations are limited liability companies, totalising 351.5 billion ROL (44.1% of the total capital subscribed in companies) and 77 are joint-stock companies, with a total amount of 445.8 billion ROL in subscribed capital, representing 55.9% of the total capital subscribed in companies (Table no. 12).

The amount of the subscribed capital in the 5,674 new incorporated companies is of 797.3 billion ROL, that is an average of 141.4 million ROL per company.

The highest amount of the subscribed capital is registered in Ilfov county reaching 233.9 billion ROL, Prahova county reaching 184.7 billion ROL and Bucharest Municipality, 152.3 billion ROL. The average amount of the subscribed capital per company, in May, varies a lot from county to county, from 2.0 million ROL in Covasna county to 1248.2 million ROL in Prahova county (Table no. 11).

Diagram no. 4



Note: Other types of companies, up to total, represent less than 0,01%

- The weight of incorporations of companies in total operations with the trade registers reveals the trend in increasing the number of operations due to changes in statutory documents. So, if the number of incorporations was of 64% in total operations during 1994, in 2001 it was 17% and 23.12% in May 2003.

The increasing dynamics of operations concerning changes in statutory documents, reflects at the same time:

- ✓ changes due to the companies' activity and related to shareholders, address of the registered office, and/or sector of activity, etc.
 - ✓ investment in capital of existing companies, sourcing from the registered profit included and from cession of shares or reducing of capital, etc.
 - ✓ the increasing number of records due to implementation of Law no. 64/1995 republished concerning the procedure of judiciary reorganisation and bankruptcy and of Law no. 314/2001 on regulating the status of some companies.
- The number of reissuing the incorporation certificates by replacement with the new registration certificates is significantly different from county to county. Up to 31 of May 2003, the highest rates in reissuing the certificates were registered in the following counties: Braşov 62.1%, Brăila 54.5%, Covasna 53.3% and Cluj 52.1%. At country's level, the average rate of reissuing of certificates is of 41.8% (Table no. 2).

- The number of strike-off of companies during December 1990 – May 2003 is very different by county. The highest number of strike-off of companies registers the Bucharest Municipality (63,454 that is 30.8% of the total number of incorporations). The following next counties are Constanța (12,299 and 27.7%) and Timiș (8,349 and 24.9%).

The data and the particular aspects in this general overview reveals the significant dimension of the activity in the trade register offices, in order to insure the legality and order in functioning of all types of companies, compulsory by law to request incorporation with the trade register before starting any activity and to request as well to be registered any changes in statutory documents due to deeds and actions stipulated by law to be registered, during the lifetime of the company and in the end of activity.

Ministry of Justice
The National Trade Register Office

General Director NTRO,
Alina Anca BALACIU

Table no. 1

**Operations registered in the Trade Register, by categories
during the period of December 1990 - May 2003, in total by country and counties,
- rate of categories of operations in total operations/country -**

Counties	Total of registered operations		out of which :									
			Registered companies		Changes in statutory documents		out of which :				Strike off companies	
	of liquidation, dissolution						out of which :					
	No.	%	No.	%	No.	%	No.	%	No.	%		
0	1	2	3	4	5	6	7	8	9	10	11	12
Total ROMÂNIA	3175642	100,0	1036169	100,0	1951681	100,0	184752	100,0	175813	100,0	187792	100,0
ALBA	39028	1,2	14730	1,4	23693	1,2	3956	2,1	3596	2,0	605	0,3
ARAD	69920	2,2	23335	2,3	42396	2,2	3300	1,8	2974	1,7	4189	2,2
ARGES	68237	2,1	25979	2,5	41308	2,1	4147	2,2	4120	2,3	950	0,5
BACAU	60548	1,9	27113	2,6	32095	1,6	6284	3,4	5278	3,0	1340	0,7
BIHOR	85985	2,7	30165	2,9	54507	2,8	4814	2,6	4599	2,6	1313	0,7
BISTRITA-NASAUD	35924	1,1	12748	1,2	21108	1,1	1211	0,7	1120	0,6	2068	1,1
BOTOSANI	28066	0,9	11985	1,2	14449	0,7	1639	0,9	1563	0,9	1632	0,9
BRASOV	107298	3,4	32154	3,1	69379	3,6	5020	2,7	4893	2,8	5765	3,1
BRAILA	45614	1,4	14284	1,4	30900	1,6	4592	2,5	4509	2,6	430	0,2
BUZAU	60013	1,9	19318	1,9	37602	1,9	2250	1,2	2109	1,2	3093	1,6
CARAS-SEVERIN	37483	1,2	13210	1,3	21440	1,1	1943	1,1	1922	1,1	2833	1,5
CALARASI	28993	0,9	11276	1,1	15924	0,8	70	0,0			1793	1,0
CLUJ	116291	3,7	44137	4,3	70354	3,6	8268	4,5	8113	4,6	1800	1,0
CONSTANTA	137234	4,3	44468	4,3	80467	4,1	11487	6,2	10621	6,0	12299	6,5
COVASNA	28133	0,9	8854	0,9	17731	0,9	1185	0,6	1175	0,7	1548	0,8
DAMBOVITA	50384	1,6	20685	2,0	25034	1,3	3026	1,6	2951	1,7	4665	2,5
DOLJ	77143	2,4	27439	2,6	42956	2,2	5871	3,2	5635	3,2	6748	3,6
GALATI	91045	2,9	25603	2,5	58845	3,0	5450	2,9	5346	3,0	6597	3,5
GIURGIU	21335	0,7	8486	0,8	10506	0,5	28	0,0			2343	1,2
GORJ	41894	1,3	12828	1,2	25917	1,3	2717	1,5	2667	1,5	3149	1,7
HARGHITA	33623	1,1	12310	1,2	20883	1,1	68	0,0			430	0,2
HUNEDOARA	55298	1,7	21730	2,1	29951	1,5	3054	1,7	2944	1,7	3617	1,9
IALOMITA	31777	1,0	10610	1,0	18985	1,0	1675	0,9	1587	0,9	2182	1,2
IASI	108878	3,4	30632	3,0	74215	3,8	4717	2,6	4227	2,4	4031	2,1
MARAMURES	73583	2,3	28410	2,7	42064	2,2	3082	1,7	2924	1,7	3109	1,7
MEHEDINTI	33853	1,1	12684	1,2	17561	0,9	3138	1,7	3085	1,8	3608	1,9
MURES	65552	2,1	26057	2,5	38616	2,0	3063	1,7	2944	1,7	879	0,5
NEAMT	55986	1,8	22291	2,2	30195	1,5	2748	1,5	2435	1,4	3500	1,9
OLT	42507	1,3	16013	1,5	23401	1,2	2096	1,1	2033	1,2	3093	1,6
PRAHOVA	118565	3,7	33556	3,2	78767	4,0	4194	2,3	3935	2,2	6242	3,3
SALAJ	20005	0,6	8220	0,8	10775	0,6	717	0,4	683	0,4	1010	0,5
SATU MARE	49754	1,6	16823	1,6	29497	1,5	2927	1,6	2918	1,7	3434	1,8
SIBIU	72229	2,3	18238	1,8	50826	2,6	2598	1,4	2584	1,5	3165	1,7
SUCEAVA	72453	2,3	28502	2,8	40348	2,1	2418	1,3	2387	1,4	3603	1,9
TELEORMAN	38472	1,2	12519	1,2	25519	1,3	1547	0,8	1508	0,9	434	0,2
TIMIS	133985	4,2	33555	3,2	92081	4,7	7531	4,1	7273	4,1	8349	4,4
TULCEA	32111	1,0	11653	1,1	18819	1,0	1178	0,6	1003	0,6	1639	0,9
VASLUI	35651	1,1	13130	1,3	21007	1,1	1588	0,9	1386	0,8	1514	0,8
VALCEA	51004	1,6	17370	1,7	31015	1,6	2052	1,1	1888	1,1	2619	1,4
VRANCEA	34859	1,1	12523	1,2	21704	1,1	1691	0,9	1593	0,9	632	0,3
MUN. BUCURESTI	755367	23,8	206304	19,9	485609	24,9	53523	29,0	51406	29,2	63454	33,8
ILFOV	29562	0,9	14242	1,4	13232	0,7	1889	1,0	1879	1,1	2088	1,1

*) according to the effect of Law No. 314/2001, art.1 și art. 6

*** Less than 0,01%

Table no. 1.a

**Operations registered in the Trade Register, by categories
during the period of December 1990 - May 2003, in total by country and counties,
- counties' rate in total country -**

Counties	Total of registered operations		out of which :									
			Registered companies		Changes in statutory documents		out of which :					
	Strike off companies						of liquidation, dissolution		out of which :			
			No.	%	No.	%	No.	%	No.	%	No.	%
0	1	2	3	4	5	6	7	8	9	10	11	12
Total ROMÂNIA	3175642	100,0	1036169	32,6	1951681	61,5	184752	5,8	175813	5,5	187792	5,9
ALBA	39028	100,0	14730	37,7	23693	60,7	3956	10,1	3596	9,2	605	1,6
ARAD	69920	100,0	23335	33,4	42396	60,6	3300	4,7	2974	4,3	4189	6,0
ARGES	68237	100,0	25979	38,1	41308	60,5	4147	6,1	4120	6,0	950	1,4
BACAU	60548	100,0	27113	44,8	32095	53,0	6284	10,4	5278	8,7	1340	2,2
BIHOR	85985	100,0	30165	35,1	54507	63,4	4814	5,6	4599	5,3	1313	1,5
BISTRITA-NASAUD	35924	100,0	12748	35,5	21108	58,8	1211	3,4	1120	3,1	2068	5,8
BOTOSANI	28066	100,0	11985	42,7	14449	51,5	1639	5,8	1563	5,6	1632	5,8
BRASOV	107298	100,0	32154	30,0	69379	64,7	5020	4,7	4893	4,6	5765	5,4
BRAILA	45614	100,0	14284	31,3	30900	67,7	4592	10,1	4509	9,9	430	0,9
BUZAU	60013	100,0	19318	32,2	37602	62,7	2250	3,7	2109	3,5	3093	5,2
CARAS-SEVERIN	37483	100,0	13210	35,2	21440	57,2	1943	5,2	1922	5,1	2833	7,6
CALARASI	28993	100,0	11276	38,9	15924	54,9	70	0,2			1793	6,2
CLUJ	116291	100,0	44137	38,0	70354	60,5	8268	7,1	8113	7,0	1800	1,5
CONSTANTA	137234	100,0	44468	32,4	80467	58,6	11487	8,4	10621	7,7	12299	9,0
COVASNA	28133	100,0	8854	31,5	17731	63,0	1185	4,2	1175	4,2	1548	5,5
DAMBOVITA	50384	100,0	20685	41,1	25034	49,7	3026	6,0	2951	5,9	4665	9,3
DOLJ	77143	100,0	27439	35,6	42956	55,7	5871	7,6	5635	7,3	6748	8,7
GALATI	91045	100,0	25603	28,1	58845	64,6	5450	6,0	5346	5,9	6597	7,2
GIURGIU	21335	100,0	8486	39,8	10506	49,2	28	0,1			2343	11,0
GORJ	41894	100,0	12828	30,6	25917	61,9	2717	6,5	2667	6,4	3149	7,5
HARGHITA	33623	100,0	12310	36,6	20883	62,1	68	0,2			430	1,3
HUNEDOARA	55298	100,0	21730	39,3	29951	54,2	3054	5,5	2944	5,3	3617	6,5
IALOMITA	31777	100,0	10610	33,4	18985	59,7	1675	5,3	1587	5,0	2182	6,9
IASI	108878	100,0	30632	28,1	74215	68,2	4717	4,3	4227	3,9	4031	3,7
MARAMURES	73583	100,0	28410	38,6	42064	57,2	3082	4,2	2924	4,0	3109	4,2
MEHEDINTI	33853	100,0	12684	37,5	17561	51,9	3138	9,3	3085	9,1	3608	10,7
MURES	65552	100,0	26057	39,8	38616	58,9	3063	4,7	2944	4,5	879	1,3
NEAMT	55986	100,0	22291	39,8	30195	53,9	2748	4,9	2435	4,3	3500	6,3
OLT	42507	100,0	16013	37,7	23401	55,1	2096	4,9	2033	4,8	3093	7,3
PRAHOVA	118565	100,0	33556	28,3	78767	66,4	4194	3,5	3935	3,3	6242	5,3
SALAJ	20005	100,0	8220	41,1	10775	53,9	717	3,6	683	3,4	1010	5,0
SATU MARE	49754	100,0	16823	33,8	29497	59,3	2927	5,9	2918	5,9	3434	6,9
SIBIU	72229	100,0	18238	25,3	50826	70,4	2598	3,6	2584	3,6	3165	4,4
SUCEAVA	72453	100,0	28502	39,3	40348	55,7	2418	3,3	2387	3,3	3603	5,0
TELEORMAN	38472	100,0	12519	32,5	25519	66,3	1547	4,0	1508	3,9	434	1,1
TIMIS	133985	100,0	33555	25,0	92081	68,7	7531	5,6	7273	5,4	8349	6,2
TULCEA	32111	100,0	11653	36,3	18819	58,6	1178	3,7	1003	3,1	1639	5,1
VASLUI	35651	100,0	13130	36,8	21007	58,9	1588	4,5	1386	3,9	1514	4,2
VALCEA	51004	100,0	17370	34,1	31015	60,8	2052	4,0	1888	3,7	2619	5,1
VRANCEA	34859	100,0	12523	35,9	21704	62,3	1691	4,9	1593	4,6	632	1,8
MUN. BUCURESTI	755367	100,0	206304	27,3	485609	64,3	53523	7,1	51406	6,8	63454	8,4
ILFOV	29562	100,0	14242	48,2	13232	44,8	1889	6,4	1879	6,4	2088	7,1

*) according to the effect of Law No. 314/2001, art.1 și art. 6

*** Less than 0,01%

Table no. 2

**Status of reissuing the incorporation certificate by exchange of the
registration certificate, the 31 of May 2003**

County	Companies having to request exchange of certificate		Companies having done the exchange of certificate		Exchange rate (3/1)
	Number	%	Number	%	%
0	1	2	3	4	5
Total of ROMÂNIA	649538	100,0	271536	100,0	41,8
ALBA	9123	1,4	3610	1,3	39,6
ARAD	15402	2,4	4740	1,7	30,8
ARGES	17444	2,7	7981	2,9	45,8
BACAU	19122	2,9	6489	2,4	33,9
BIHOR	18809	2,9	7955	2,9	42,3
BISTRITA-NASAUD	9043	1,4	3549	1,3	39,2
BOTOSANI	8459	1,3	3104	1,1	36,7
BRASOV	17310	2,7	10744	4,0	62,1
BRAILA	8816	1,4	4803	1,8	54,5
BUZAU	13134	2,0	5553	2,0	42,3
CARAS-SEVERIN	8057	1,2	3315	1,2	41,1
CALARASI	7915	1,2	2360	0,9	29,8
CLUJ	21625	3,3	11269	4,2	52,1
CONSTANTA	23142	3,6	11712	4,3	50,6
COVASNA	6400	1,0	3409	1,3	53,3
DAMBOVITA	13383	2,1	4596	1,7	34,3
DOLJ	17009	2,6	6685	2,5	39,3
GALATI	14929	2,3	6727	2,5	45,1
GIURGIU	4723	0,7	1898	0,7	40,2
GORJ	7388	1,1	2926	1,1	39,6
HARGHITA	8017	1,2	3188	1,2	39,8
HUNEDOARA	15330	2,4	4941	1,8	32,2
IALOMITA	6790	1,0	2553	0,9	37,6
IASI	22365	3,4	8988	3,3	40,2
MARAMURES	21509	3,3	8513	3,1	39,6
MEHEDINTI	7769	1,2	2415	0,9	31,1
MURES	18102	2,8	6846	2,5	37,8
NEAMT	15155	2,3	5110	1,9	33,7
OLT	11050	1,7	4487	1,7	40,6
PRAHOVA	21987	3,4	10084	3,7	45,9
SALAJ	5430	0,8	2341	0,9	43,1
SATU MARE	11157	1,7	3820	1,4	34,2
SIBIU	12203	1,9	5925	2,2	48,6
SUCEAVA	21144	3,3	6498	2,4	30,7
TELEORMAN	9105	1,4	3860	1,4	42,4
TIMIS	20068	3,1	8786	3,2	43,8
TULCEA	8177	1,3	2929	1,1	35,8
VASLUI	9177	1,4	3398	1,3	37,0
VALCEA	10874	1,7	5044	1,9	46,4
VRANCEA	7321	1,1	3177	1,2	43,4
MUN. BUCURESTI	118019	18,2	52108	19,2	44,2
ILFOV	7556	1,2	3100	1,1	41,0

Note: Figures in column 1 are being issued in accordance with the methodological note.

*** Sub 0,01%

Table no.3

**Number and structure of incorporations in the Trade Register, by years,
during the period of December 1990 - May 2003**

Period (year, month)	Registered companies	Percentage	
	No.	%	%
0	1	2	3
Total, 31 May 2002,	1036169	100,00	
out of which			
Year 1990	81	0,01	
Year 1991	95840	9,25	
Year 1992	137456	13,27	
Year 1993	117078	11,30	
Year 1994	137445	13,26	
Year 1995	65479	6,32	
Year 1996	62089	5,99	
Year 1997	55663	5,37	
Year 1998	63878	6,16	
Year 1999	57197	5,52	
Year 2000	57291	5,53	
Year 2001	61265	5,91	
Year 2002	84780	8,18	
Year 2003 (1.I - 31.XII),	40627	3,92	100,0
out of which :			
January	6706		16,5
February	8659		21,3
March	8168		20,1
April	8667		21,3
May	8427		20,7

Note: Column 2 reveals the annual structure of incorporations; column 3 reveals the structure by months during the current year.

*** Less than 0,01%

Table no. 4

The number of incorporations in the Trade Register, by counties and sources of capital, in the period December 1990 - May 2003

Counties	Total		out of which:					Ranking by: *	
			Private capital			State majority capital			Mixed capital (state+private)
			out of which:			out of which:			Companies
			PF+AF	Companies	OC	RA	Companies		Companies
No.	%	No.	No.	No.	No.	No.	No.		
0	1	2	3	4	5	6	7	8	9
Total ROMÂNIA	1036169	100,0	201893	816929	5307	1263	2284	8493	X
ALBA	14730	1,4	3583	10767	141	31	38	170	25
ARAD	23336	2,3	7878	14905	155	26	40	332	16
ARGES	25979	2,5	6809	18793	168	29	29	151	14
BACAU	27113	2,6	8550	18108	158	32	42	223	12
BIHOR	30165	2,9	3109	26513	144	31	62	306	8
BISTRITA-NASAUD	12748	1,2	4042	8452	98	18	29	109	31
BOTOSANI	11985	1,2	4057	7497	121	21	170	119	36
BRASOV	32154	3,1	4650	27110	114	36	80	164	6
BRAILA	14284	1,4	2009	11946	95	26	43	165	26
BUZAU	19318	1,9	3789	15190	142	25	42	130	20
CARAS-SEVERIN	13210	1,3	4526	8349	102	33	65	135	28
CALARASI	11276	1,1	2748	8258	86	16	75	93	38
CLUJ	44137	4,3	6947	36690	150	49	40	261	3
CONSTANTA	44468	4,3	5266	38373	202	48	45	534	2
COVASNA	8854	0,9	2071	6552	67	23	32	109	40
DAMBOVITA	20685	2,0	9560	10737	134	28	75	151	19
DOLJ	27439	2,6	2953	24031	161	39	54	201	11
GALATI	25603	2,5	3444	21803	134	28	51	143	15
GIURGIU	8486	0,8	1067	7100	80	20	109	110	41
GORJ	12828	1,2	1686	10729	184	50	79	100	30
HARGHITA	12310	1,2	2367	9577	85	23	30	228	35
HUNEDOARA	21730	2,1	4889	16353	81	37	90	280	18
IALOMITA	10610	1,0	3736	6651	73	15	46	89	39
IASI	30632	3,0	6884	23169	136	32	68	343	7
MARAMURES	28410	2,7	11659	16438	119	34	39	121	10
MEHEDINTI	12684	1,2	2946	9514	82	18	26	98	32
MURES	26057	2,5	8954	16721	154	28	33	167	13
NEAMT	22291	2,2	6682	15234	153	28	29	165	17
OLT	16013	1,5	5939	9703	161	26	61	123	24
PRAHOVA	33556	3,2	7526	25481	177	49	62	261	4
SALAJ	8220	0,8	2225	5782	107	18	27	61	42
SATU MARE	16823	1,6	4033	12510	88	18	40	134	23
SIBIU	18238	1,8	2319	15513	115	26	108	157	21
SUCEAVA	28502	2,8	13188	14804	201	28	61	220	9
TELEORMAN	12519	1,2	3561	8572	151	21	37	177	34
TIMIS	33555	3,2	2249	30718	140	36	68	344	5
TULCEA	11653	1,1	3108	8207	66	18	42	212	37
VASLUI	13130	1,3	5944	6885	109	16	41	135	29
VALCEA	17370	1,7	5822	11192	168	39	37	112	22
VRANCEA	12523	1,2	2521	9743	103	16	27	113	33
MUN. BUCURESTI	206303	19,9	5282	199575	138	108	100	1100	1
ILFOV	14242	1,4	1315	12684	64	20	12	147	27

*) The total number of incorporations (col 1)

*** Less than 0,01%

Table no. 5

**The number of incorporations in the Trade Register,
by counties and categories, during the period of
December 1990 - May 2003**

County	Total		out of which:						
			PF+AF	companies: 827706				RA	OC
	SNC	SCS		SRL	SA	No.	No.		
	No.	%	No.	No.	No.			No.	No.
0	1	2	3	4	5	6	7	8	9
Total ROMÂNIA	1036169	100,0	201893	32548	1527	764743	28883	1263	5307
ALBA	14730	1,4	3583	888	11	9561	515	31	141
ARAD	23335	2,3	7878	48	5	14603	619	26	155
ARGES	25979	2,5	6809	107	13	18110	743	29	168
BACAU	27113	2,6	8550	1299	4	16413	656	32	158
BIHOR	30165	2,9	3109	125	47	25868	841	31	144
BISTRITA-NASAUD	12748	1,2	4042	146	20	8044	380	18	98
BOTOSANI	11985	1,2	4057	468	1	6894	423	21	121
BRASOV	32154	3,1	4650	239	19	26370	726	36	114
BRAILA	14284	1,4	2009	376	12	11285	481	26	95
BUZAU	19318	1,9	3789	3745	46	11052	519	25	142
CARAS-SEVERIN	13210	1,3	4526	113	6	7994	436	33	102
CALARASI	11276	1,1	2748	609	3	7487	327	16	86
CLUJ	44137	4,3	6947	2105	18	33800	1068	49	150
CONSTANTA	44468	4,3	5266	311	23	37269	1349	48	202
COVASNA	8854	0,9	2071	147	3	6266	277	23	67
DAMBOVITA	20685	2,0	9560	59	8	10452	444	28	134
DOLJ	27439	2,6	2953	1557	8	21927	794	39	161
GALATI	25603	2,5	3444	1574	6	19680	737	28	134
GIURGIU	8486	0,8	1067	35	8	6969	307	20	80
GORJ	12828	1,2	1686	28	1	10440	439	50	184
HARGHITA	12310	1,2	2367	62	6	9315	452	23	85
HUNEDOARA	21730	2,1	4889	1165	98	14867	593	37	81
IALOMITA	10610	1,0	3736	266	11	6195	314	15	73
IASI	30632	3,0	6884	505	111	22055	907	32	136
MARAMURES	28410	2,7	11659	1924	23	14114	537	34	119
MEHEDINTI	12684	1,2	2946	427	3	8915	293	18	82
MURES	26057	2,5	8954	37	34	16244	606	28	154
NEAMT	22291	2,2	6682	3292	30	11488	618	28	153
OLT	16013	1,5	5939	1611	1	7814	461	26	161
PRAHOVA	33556	3,2	7526	3113	12	21889	790	49	177
SALAJ	8220	0,8	2225	600	4	5000	266	18	107
SATU MARE	16823	1,6	4033	283	4	11964	433	18	88
SIBIU	18238	1,8	2319	772	43	14375	588	26	115
SUCEAVA	28502	2,8	13188	438	8	14108	531	28	201
TELEORMAN	12519	1,2	3561	271	399	7727	389	21	151
TIMIS	33555	3,2	2249	573	22	29392	1143	36	140
TULCEA	11653	1,1	3108	1360	112	6536	453	18	66
VASLUI	13130	1,3	5944	90	11	6578	382	16	109
VALCEA	17370	1,7	5822	362	5	10546	428	39	168
VRANCEA	12523	1,2	2521	356	9	9096	422	16	103
MUN. BUCURESTI	206304	19,9	5282	1016	292	193736	5731	108	138
ILFOV	14242	1,4	1315	46	27	12305	465	20	64

Table no. 6

**The number of incorporations in the Trade Register, by field of activity*
and categories, during the period of
December 1990 - May 2003**

CAEN segment	Field of activity	Total		out of which:						
				PF+AF	companies: 827706				RA	OC
					SNC	SCS	SRL	SA		
					No.	No.	No.	No.		
0	1	2	3	4	5	6	7	8	9	10
	Total ROMÂNIA	1036169	100,0	201893	32548	1527	764743	28883	1263	5307
1	Agriculture, hunting and related service activities	42742	4,1	3719	2023	44	33100	3702	37	117
2	Forestry, logging and related service activities	5560	0,5	604	152	3	4533	214	46	8
5	Fishing, fish farming and related service activities	1169	0,1	392	17	3	705	52		
10	Mining of coal and lignite; extraction of peat	62	0,0	1			45	12	4	
11	Extraction of crude petroleum and natural gas; service activities incidental to oil and gas extraction, excluding surveying	259	0,0	2	1		106	104	46	
12	Mining of uranium and thorium ores	133	0,0	32			95	6		
13	Mining of metal ores	507	0,0	162			284	53	8	
14	Other mining and quarrying	1023	0,1	83	9	1	776	151	2	1
15	Manufacture of food products and beverages	62493	6,0	8388	3260	149	48670	1773	5	248
16	Manufacture of tobacco products	273	0,0	47			195	30	1	
17	Manufacture of textiles	9875	1,0	1659	556	16	7103	397		144
18	Manufacture of wearing apparel; dressing and dyeing of fur	16241	1,6	2906	874	37	11779	341	1	303
19	Tanning and dressing of leather; manufacture of luggage, handbags, saddlery, harness and footwear	4063	0,4	565	112	6	3211	117	1	51
20	Manufacture of wood and of products of wood and cork, except furniture; manufacture of articles of straw and plaiting materials	15707	1,5	3404	574	28	11185	465	9	42
21	Manufacture of pulp, paper and paper products	1298	0,1	62	21	1	1107	94		13
22	Publishing, printing and reproduction of recorded media	8705	0,8	581	317	21	7386	377	13	10
23	Manufacture of coke, refined petroleum products and nuclear fuel	219	0,0	21			164	32	2	
24	Manufacture of chemicals and chemical products	3215	0,3	86	89	1	2665	362	6	6
25	Manufacture of rubber and plastic products	4552	0,4	397	313	7	3560	250		24
26	Manufacture of other non-metallic mineral products	5219	0,5	841	212	6	3788	354	5	13
27	Manufacture of basic metals	2188	0,2	137	39	3	1803	196	3	7
28	Manufacture of fabricated metal products, except machinery and equipment	10100	1,0	1174	361	22	7794	676	11	62
29	Manufacture of machinery and equipment n.e.c.	3001	0,3	50	44	7	2482	394	19	5
30	Manufacture of office machinery and computers	1551	0,1	11	25	3	1432	80		
31	Manufacture of electrical machinery and apparatus n.e.c.	1519	0,1	78	44	4	1250	137		6
32	Manufacture of radio, television and communication equipment and apparatus	688	0,1	18	14	3	582	70		1
33	Manufacture of medical, precision and optical instruments, watches and clocks	1479	0,1	201	16	2	1169	87		4
34	Manufacture of motor vehicles, trailers and semi-trailers	721	0,1	17	31	3	553	115		2
35	Manufacture of other transport equipment	1358	0,1	170	86	7	906	114	73	2
36	Manufacture of furniture; manufacturing n.e.c.	9915	1,0	2067	284	15	7076	311	5	157
37	Recycling	3216	0,3	275	51	5	2722	162		1
40	Electricity, gas, steam and hot water supply	2632	0,3	826	3	1	1261	453	88	
41	Collection, purification and distribution of water	3429	0,3	1602	2		1596	158	71	
45	Construction	41892	4,0	6656	608	40	32259	2200	53	76

*)Field of activity declared when registered, according to CAEN classification

Table no. 6
(continuing)

**The number of incorporations in the Trade Register, by field of activity*
and categories, during the period of
December 1990 - May 2003**

CAEN segment	Field of activity	Total		out of which:						
				PF+AF	companies: 827706				RA	OC
					SNC	SCS	SRL	SA		
					No.	No.	No.	No.		
0	1	2	3	4	5	6	7	8	9	10
	Total ROMÂNIA	1036169	100,0	201893	32548	1527	764743	28883	1263	5307
50	Sale, maintenance and repair of motor vehicles and motorcycles; retail sale of automotive fuel	39947	3,9	3650	1242	34	33969	1005	5	42
51	Wholesale trade and commission trade, except of motor vehicles and motorcycles	155603	15,0	9603	4523	146	137943	3072	35	281
52	Retail trade, except of motor vehicles and motorcycles; repair of personal and household goods	374642	36,2	115018	11901	555	242414	2434	5	2314
55	Hotels and restaurants	39626	3,8	8959	1634	126	28071	668	73	95
60	Land transport; transport via pipelines	38172	3,7	9921	842	35	26332	999	33	10
61	Water transport	704	0,1	114	82	8	369	60	70	1
62	Air transport	252	0,0	17			184	41	10	
63	Supporting and auxiliary transport activities; activities of travel agencies	6612	0,6	294	220	14	5574	407	93	10
64	Post and telecommunications	3224	0,3	121	11	1	2812	265	11	3
65	Financial intermediation, except insurance and pension funding	4307	0,4	122	15		1401	1740	2	1027
66	Insurance and pension funding, except compulsory social security	1763	0,2	504	1		482	775		1
67	Activities auxiliary to financial intermediation	2996	0,3	366	6	2	2364	250		8
70	Real estate activities	7024	0,7	262	28	6	6324	381	17	6
71	Renting of machinery and equipment without operator and of personal and household goods	1845	0,2	283	116	8	1282	85	70	1
72	Computer and related activities	10323	1,0	830	111	12	9029	336	2	3
73	Research and development	1184	0,1	131	11	2	845	151	42	2
74	Other business activities	43969	4,2	6147	734	61	35471	1391	106	58
75	Public administration and defence; compulsory social security	300	0,0	56	5		198	23	17	1
80	Education	3248	0,3	1304	62	5	1815	62		
85	Health and social work	10262	1,0	1575	232	15	8366	70	3	1
90	Sewage and refuse disposal, sanitation and similar activities	454	0,0	29	13	2	308	83	18	
91	Activities of membership organizations n.e.c.	145	0,0	44	1		84	13		3
92	Recreational, cultural and sporting activities	7951	0,8	1111	197	14	6328	223	66	12
93	Other service activities	14205	1,4	4046	417	42	9194	305	76	124
95	Activities of households as employers of domestic staff	354	0,0	122	6	1	221	3		1
99	Extra-territorial organizations and bodies	53	0,0	30			21	2		

*Field of activity declared when registered, according to CAEN classification

Table no. 7

**Operations carried on with the Trade Registers,
by counties and categories,
in May 2003**

County	Total of operations carried on		out of which:							
			New incorporations		Changes in statutory documents		out of which: of liquidation, dissolution		Strike off companies	
	No.	%	No.	%	No.	%	No.	%	No.	%
0	1	2	3	4	5	6	7	8	9	10
Total ROMÂNIA	36451	100,0	8427	23,1	26961	74,0	180	0,5	1063	2,9
ALBA	438	100,0	191	43,6	237	54,1	3	0,7	10	2,3
ARAD	726	100,0	203	28,0	513	70,7	6	0,8	10	1,4
ARGES	727	100,0	222	30,5	479	65,9			26	3,6
BACAU	547	100,0	188	34,4	355	64,9	3	0,5	4	0,7
BIHOR	1152	100,0	295	25,6	838	72,7	11	1,0	19	1,6
BISTRITA-NASAUD	320	100,0	76	23,8	225	70,3	4	1,3	19	5,9
BOTOSANI	370	100,0	161	43,5	204	55,1			5	1,4
BRASOV	1249	100,0	293	23,5	953	76,3	2	0,2	3	0,2
BRAILA	321	100,0	89	27,7	219	68,2	1	0,3	13	4,0
BUZAU	544	100,0	142	26,1	389	71,5	1	0,2	13	2,4
CARAS-SEVERIN	295	100,0	96	32,5	196	66,4	2	0,7	3	1,0
CALARASI	431	100,0	86	20,0	342	79,4			3	0,7
CLUJ	3421	100,0	431	12,6	2971	86,8	6	0,2	19	0,6
CONSTANTA	1890	100,0	555	29,4	1311	69,4	12	0,6	24	1,3
COVASNA	362	100,0	89	24,6	262	72,4	3	0,8	11	3,0
DAMBOVITA	558	100,0	147	26,3	387	69,4	1	0,2	24	4,3
DOLJ	225	100,0	181	80,4	41	18,2	2	0,9	3	1,3
GALATI	881	100,0	184	20,9	684	77,6	36	4,1	13	1,5
GIURGIU	224	100,0	77	34,4	145	64,7			2	0,9
GORJ	554	100,0	119	21,5	423	76,4	2	0,4	12	2,2
HARGHITA	900	100,0	237	26,3	662	73,6	2	0,2	1	0,1
HUNEDOARA	481	100,0	115	23,9	352	73,2	3	0,6	14	2,9
IALOMITA	336	100,0	102	30,4	229	68,2	2	0,6	5	1,5
IASI	1136	100,0	279	24,6	841	74,0	4	0,4	16	1,4
MARAMURES	636	100,0	132	20,8	489	76,9	2	0,3	15	2,4
MEHEDINTI	261	100,0	104	39,8	141	54,0	1	0,4	16	6,1
MURES	992	100,0	212	21,4	768	77,4			12	1,2
NEAMT	645	100,0	206	31,9	424	65,7	2	0,3	15	2,3
OLT	552	100,0	95	17,2	406	73,6	8	1,4	51	9,2
PRAHOVA	1140	100,0	259	22,7	855	75,0	4	0,4	26	2,3
SALAJ	243	100,0	95	39,1	145	59,7	1	0,4	3	1,2
SATU MARE	1673	100,0	68	4,1	1087	65,0			518	31,0
SIBIU	790	100,0	212	26,8	556	70,4	1	0,1	22	2,8
SUCEAVA	434	100,0	147	33,9	269	62,0			18	4,1
TELEORMAN	315	100,0	86	27,3	227	72,1	4	1,3	2	0,6
TIMIS	848	100,0	277	32,7	559	65,9	1	0,1	12	1,4
TULCEA	226	100,0	37	16,4	187	82,7	2	0,9	2	0,9
VASLUI	531	100,0	85	16,0	430	81,0	1	0,2	16	3,0
VALCEA	593	100,0	201	33,9	381	64,2	7	1,2	11	1,9
VRANCEA	157	100,0	75	47,8	82	52,2	4	2,5		
MUN. BUCURESTI	7908	100,0	1370	17,3	6491	82,1	34	0,4	47	0,6
ILFOV	419	100,0	208	49,6	206	49,2	2	0,5	5	1,2

*) by effect of implementation of Law no. 314/2001, art.1 and art. 6

*** Less than 0,01%

Table no. 8

**The number of incorporations in the Trade Register,
by counties and sources of capital,
in May 2003**

County	Total		out of which:					Ranking by: *	
			Private capital			State majority capital			Mixed capital (state+private)
			out of which:			out of which:			
			PF+AF	Companies	OC	RA	Companies		Companies
No.	%	No.	No.	No.	No.	No.	No.		
0	1	2	3	4	5	6	7	8	9
Total ROMÂNIA	8427	100,0	2748	5669	5		1	4	X
ALBA	191	2,3	116	75					17
ARAD	203	2,4	79	124					15
ARGES	222	2,6	87	135					10
BACAU	188	2,2	56	132					18
BIHOR	295	3,5	170	125					4
BISTRITA-NASAUD	76	0,9	6	70					39
BOTOSANI	161	1,9	104	57					21
BRASOV	293	3,5	102	190			1		5
BRAILA	89	1,1	28	61					33
BUZAU	142	1,7	47	95					24
CARAS-SEVERIN	96	1,1	24	72					30
CALARASI	86	1,0	38	48					35
CLUJ	431	5,1	116	315					3
CONSTANTA	555	6,6	246	309					2
COVASNA	89	1,1	58	31					34
DAMBOVITA	147	1,7	66	81					22
DOLJ	181	2,1	54	127					20
GALATI	184	2,2	64	120					19
GIURGIU	77	0,9	44	33					38
GORJ	119	1,4	51	68					26
HARGHITA	237	2,8	147	90					9
HUNEDOARA	115	1,4	4	111					27
IALOMITA	102	1,2	68	34					29
IASI	279	3,3	91	184	4				6
MARAMURES	132	1,6	28	104					25
MEHEDINTI	104	1,2	65	39					28
MURES	212	2,5	80	132					11
NEAMT	206	2,4	71	135					14
OLT	95	1,1	30	65					31
PRAHOVA	259	3,1	109	150					8
SALAJ	95	1,1	33	62					32
SATU MARE	68	0,8		68					41
SIBIU	212	2,5	68	144					12
SUCEAVA	147	1,7	63	84					23
TELEORMAN	86	1,0	30	56					36
TIMIS	277	3,3	16	261					7
TULCEA	37	0,4	11	26					42
VASLUI	85	1,0	39	46					37
VALCEA	201	2,4	111	90					16
VRANCEA	75	0,9	16	59					40
MUN. BUCURESTI	1370	16,3	94	1276					1
ILFOV	208	2,5	18	185	1			4	13

*) The total number of incorporations (col 1)

*** Less than 0,01%

Table no.9

**The number of incorporations in the Trade Register,
by counties and category
in May 2003**

County	Total		out of which:						RA	OC
			PF+AF	companies: 5674						
	SNC	SCS		SRL	SA	No.	No.			
	No.	%	No.	No.	No.			No.	No.	No.
0	1	2	3	4	5	6	7	8	9	
Total ROMÂNIA	8427	100,0	2748	9	1	5587	77		5	
ALBA	191	2,3	116			75				
ARAD	203	2,4	79			122	2			
ARGES	222	2,6	87			133	2			
BACAU	188	2,2	56			130	2			
BIHOR	295	3,5	170			125				
BISTRITA-NASAUD	76	0,9	6			69	1			
BOTOSANI	161	1,9	104			57				
BRASOV	293	3,5	102			187	4			
BRAILA	89	1,1	28			60	1			
BUZAU	142	1,7	47			95				
CARAS-SEVERIN	96	1,1	24			72				
CALARASI	86	1,0	38			47	1			
CLUJ	431	5,1	116			312	3			
CONSTANTA	555	6,6	246			299	10			
COVASNA	89	1,1	58	1		30				
DAMBOVITA	147	1,7	66			80	1			
DOLJ	181	2,1	54			125	2			
GALATI	184	2,2	64	1		118	1			
GIURGIU	77	0,9	44			32	1			
GORJ	119	1,4	51			66	2			
HARGHITA	237	2,8	147			90				
HUNEDOARA	115	1,4	4			111				
IALOMITA	102	1,2	68			33	1			
IASI	279	3,3	91			184			4	
MARAMURES	132	1,6	28			104				
MEHEDINTI	104	1,2	65			38	1			
MURES	212	2,5	80			131	1			
NEAMT	206	2,4	71			132	3			
OLT	95	1,1	30			65				
PRAHOVA	259	3,1	109	1		148	1			
SALAJ	95	1,1	33			62				
SATU MARE	68	0,8				68				
SIBIU	212	2,5	68	1		143				
SUCEAVA	147	1,7	63			84				
TELEORMAN	86	1,0	30			56				
TIMIS	277	3,3	16			256	5			
TULCEA	37	0,4	11			26				
VASLUI	85	1,0	39			46				
VALCEA	201	2,4	111	1		86	3			
VRANCEA	75	0,9	16	1		58				
MUN. BUCURESTI	1370	16,3	94	3		1250	23			
ILFOV	208	2,5	18		1	182	6		1	

**The number of incorporations in the Trade Register, by field of activity*
and categories in May 2003**

CAEN segment	Field of activity	Total		out of which:						
				PF+AF	companies: 5674				RA	OC
		SNC	SCS		SRL	SA				
		No.	%	No.	No.	No.	No.	No.	No.	
0	1	2	3	4	5	6	7	8	9	10
	Total ROMÂNIA	8427	100,0	2748	9	1	5587	77		5
1	Agriculture, hunting and related service activities	179	2,1	73		1	103	2		
2	Forestry, logging and related service activities	54	0,6	5			49			
5	Fishing, fish farming and related service activities	23	0,3	12			11			
10	Mining of coal and lignite; extraction of peat									
11	Extraction of crude petroleum and natural gas; service activities incidental to oil and gas extraction, excluding surveying	3	0,0				3			
12	Mining of uranium and thorium ores									
13	Mining of metal ores									
14	Other mining and quarrying	7	0,1				6	1		
15	Manufacture of food products and beverages	207	2,5	73			133	1		
16	Manufacture of tobacco products									
17	Manufacture of textiles	37	0,4	7			28	2		
18	Manufacture of wearing apparel; dressing and dyeing of fur	99	1,2	19			79	1		
19	Tanning and dressing of leather; manufacture of luggage, handbags, saddlery, harness and footwear	18	0,2	4			14			
20	Manufacture of wood and of products of wood and cork, except furniture; manufacture of articles of straw and plaiting materials	134	1,6	43			91			
21	Manufacture of pulp, paper and paper products	6	0,1				6			
22	Publishing, printing and reproduction of recorded media	59	0,7	11			46	2		
23	Manufacture of coke, refined petroleum products and nuclear fuel	2	0,0				1	1		
24	Manufacture of chemicals and chemical products	13	0,2				13			
25	Manufacture of rubber and plastic products	26	0,3	1			25			
26	Manufacture of other non-metallic mineral products	73	0,9	38			34	1		
27	Manufacture of basic metals	7	0,1				7			
28	Manufacture of fabricated metal products, except machinery and equipment	85	1,0	22			62	1		
29	Manufacture of machinery and equipment n.e.c.	22	0,3	1			19	2		
30	Manufacture of office machinery and computers	4	0,0				4			
31	Manufacture of electrical machinery and apparatus n.e.c.	8	0,1				8			
32	Manufacture of radio, television and communication equipment and apparatus	4	0,0				3	1		
33	Manufacture of medical, precision and optical instruments, watches and clocks	17	0,2	8			8	1		
34	Manufacture of motor vehicles, trailers and semi- trailers	1	0,0				1			
35	Manufacture of other transport equipment	5	0,1	3			2			
36	Manufacture of furniture; manufacturing n.e.c.	88	1,0	32			56			
37	Recycling	25	0,3	1			24			
40	Electricity, gas, steam and hot water supply	7	0,1				5	2		
41	Collection, purification and distribution of water	1	0,0				1			
45	Construction	597	7,1	165			419	13		

*)Field of activity declared when registered, according to CAEN classification

Table no. 10
(continuance)

**The number of incorporations in the Trade Register, by field of activity*
and categories in May 2003**

CAEN segment	Field of activity	Total		out of which:						
				PF+AF	companies: 5674				RA	OC
					SNC	SCS	SRL	SA		
					No.	No.	No.	No.		
0	1	2	3	4	5	6	7	8	9	10
	Total ROMÂNIA	8427	100,0	2748	9	1	5587	77		5
50	Sale, maintenance and repair of motor vehicles and motorcycles; retail sale of automotive fuel	220	2,6	62			156	2		
51	Wholesale trade and commission trade, except of motor vehicles and motorcycles	733	8,7	60			669	4		
52	Retail trade, except of motor vehicles and motorcycles; repair of personal and household goods	2220	26,3	942	1		1269	3		5
55	Hotels and restaurants	358	4,2	95			258	5		
60	Land transport; transport via pipelines	675	8,0	405			270			
61	Water transport	2	0,0				2			
62	Air transport									
63	Supporting and auxiliary transport activities; activities of travel agencies	66	0,8	3			63			
64	Post and telecommunications	66	0,8	7			57	2		
65	Financial intermediation, except insurance and pension funding	44	0,5	3			37	4		
66	Insurance and pension funding, except compulsory social security	31	0,4	27				4		
67	Activities auxiliary to financial intermediation	66	0,8	24			42			
70	Real estate activities	167	2,0	7			151	9		
71	Renting of machinery and equipment without operator and of personal and household goods	23	0,3	4			19			
72	Computer and related activities	245	2,9	59			186			
73	Research and development	6	0,1	4			2			
74	Other business activities	1153	13,7	339	7		800	7		
75	Public administration and defence; compulsory social security	2	0,0	1			1			
80	Education	60	0,7	38			21	1		
85	Health and social work	152	1,8	12			137	3		
90	Sewage and refuse disposal, sanitation and similar activities	7	0,1				7			
91	Activities of membership organizations n.e.c.	4	0,0	4						
92	Recreational, cultural and sporting activities	144	1,7	39	1		102	2		
93	Other service activities	167	2,0	91			76			
95	Activities of households as employers of domestic staff	5	0,1	4			1			
99	Extra-territorial organizations and bodies									

*)Field of activity declared when registered, according to CAEN classification

Table no. 11

**Number of companies registered and the amount
of subscribed capital, by county
in May 2003**

County	Total registered companies		Subscribed capital		Average subscribed capital on company
	No.	%	mil. ROL	%	mil. ROL
0	1	2	3	4	5
Total ROMÂNIA	5674	100,0	797250,3	100,0	141,4
ALBA	75	1,3	268,6	0,0	3,6
ARAD	124	2,2	44516,2	5,6	359,0
ARGES	135	2,4	869,0	0,1	6,5
BACAU	132	2,3	2350,5	0,3	17,9
BIHOR	125	2,2	829,3	0,1	6,6
BISTRITA-NASAUD	70	1,2	357,2	0,0	5,1
BOTOSANI	57	1,0	174,1	0,0	3,1
BRASOV	191	3,4	16354,9	2,1	87,0
BRAILA	61	1,1	251,0	0,0	4,1
BUZAU	95	1,7	307,7	0,0	3,3
CARAS-SEVERIN	72	1,3	165,3	0,0	2,3
CALARASI	48	0,8	327,1	0,0	6,8
CLUJ	315	5,6	2584,8	0,3	8,3
CONSTANTA	309	5,4	83252,8	10,4	270,3
COVASNA	31	0,5	62,5	***	2,0
DAMBOVITA	81	1,4	2253,0	0,3	28,2
DOLJ	127	2,2	9757,6	1,2	77,4
GALATI	120	2,1	1486,2	0,2	12,7
GIURGIU	33	0,6	284,0	0,0	8,6
GORJ	68	1,2	479,1	0,1	7,0
HARGHITA	90	1,6	1644,9	0,2	18,3
HUNEDOARA	111	2,0	657,7	0,1	5,9
IALOMITA	34	0,6	109,0	0,0	3,3
IASI	184	3,2	1803,7	0,2	9,9
MARAMURES	104	1,8	2921,7	0,4	28,1
MEHEDINTI	39	0,7	20652,1	2,6	529,5
MURES	132	2,3	377,4	0,0	2,9
NEAMT	135	2,4	1900,2	0,2	14,3
OLT	65	1,1	192,0	0,0	3,0
PRAHOVA	150	2,6	184740,0	23,2	1248,2
SALAJ	62	1,1	301,4	0,0	4,9
SATU MARE	68	1,2	5412,7	0,7	79,6
SIBIU	144	2,5	5658,6	0,7	39,6
SUCEAVA	84	1,5	9725,0	1,2	117,2
TELEORMAN	56	1,0	310,5	0,0	5,5
TIMIS	261	4,6	5472,1	0,7	21,0
TULCEA	26	0,5	465,2	0,1	17,9
VASLUI	46	0,8	121,1	0,0	2,7
VALCEA	90	1,6	953,8	0,1	10,7
VRANCEA	59	1,0	681,6	0,1	11,6
MUN. BUCURESTI	1276	22,5	152318,5	19,1	120,1
ILFOV	189	3,3	233900,3	29,3	1237,6

Note: The average does not include filials because according to the Law no.31/1990 they are not juridical persons

*** Less than 0,01%

Table no. 12

**Number of registered companies and the amount
of subscribed capital by category,
in May 2003**

Company type	Total registered companies		Subscribed capital		Average subscribed capital on company
	No.	%	mil. ROL	%	mil. ROL
0	1	2	3	4	5
Total ROMÂNIA	5674	100,0	797250,3	100,0	141,4
SNC	9	0,2	8,50	***	0,9
SCS	1	0,0	21,69	***	
SA	77	1,4	445771,35	55,9	6858,0
SRL	5587	98,5	351448,72	44,1	63,2
SCA					

Note: The average does not include filials because according to the Law no.31/1990 they are not juridical persons

*** Less than 0,01%

Diagram no.5

