



MINISTRY OF JUSTICE

THE NATIONAL TRADE REGISTER OFFICE

Bucharest, 2, Octavian Goga Blvd., Sector 3; Phone: 320.60.13; Fax: 320.58.29; Website: [www.onrr.ro](http://www.onrr.ro); E-mail: [onrr@onrr.ro](mailto:onrr@onrr.ro)

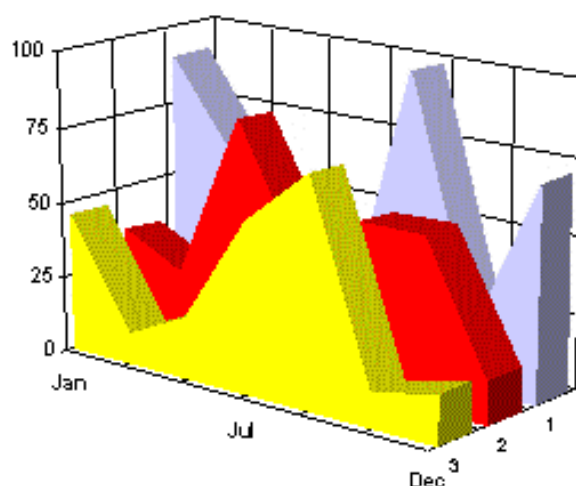
# PROCEEDINGS IN THE CENTRAL TRADE REGISTER

## STATISTICAL SYNTHESIS

OF

RECORDS IN THE CENTRAL TRADE REGISTER

- the 30<sup>th</sup> of April, 2003 - provisional data -



- ISSUE No. 137 -

## **MINISTRY OF JUSTICE THE NATIONAL TRADE REGISTER OFFICE**

---

- Operations of incorporation of companies, changes in statutory documents and strike-off of companies are based on Law No.26/1990 reissued, Law No.31/1990, reissued, OUG No.76/2001, reissued and Methodology Norms No. P/608/1998.
  
- This paper presents the trend in operations registered in The Trade Register Office attached to the law court of Bucharest and in the Trade Register Offices attached to the law court in each county of Romania.
  
- Information recorded in the Central Trade Register concern operations compulsory by law to be registered in the trade registers within the 42 trade register offices attached to the law courts.

*• No part of the content of this publication, in original or in any modified format, may be reproduced, stored in a retrieval system, or transmitted, in any form or by any means, without the prior permission in writing of The Ministry of Justice – The National Trade Register Office.*

*• The content of this publication may be referred to in articles, studies, books, as supporting or explanatory data under the condition only, the source of the information to be clearly and precisely specified.*

*Printed: June 2003*

# Contents

	Page
<b>1 Explanatory Note</b>	<b>1</b>
<b>2 General Overview</b>	<b>3</b>
Diagram no. 1 – Yearly percentage of new registered companies in the Trade Registry	3
Diagram no. 2 – Structure of incorporations by type of company during 1991 - April 2003	4
Diagram no. 3 – Structure of incorporations by type of companies in April 2003	5
Diagram no. 4 – Structure of invested capital during April 2003, by type of company	6
<b>3 Tables and statistical graphics</b>	<b>8</b>
<b>3.1 Data for December 1990 – April 2003</b>	<b>8</b>
Table no.1 – Operations registered in the Trade Register, by categories during the period of December 1990 – April 2003, in total by country and counties, rate of categories of operations in total operations country	8
Table no.1.a – Operations registered in the Trade Register, by categories during the period of December 1990 – April 2003, in total by country and counties, counties' rate in total country	9
Table no.2 – Status of reissuing the incorporation certificate by exchange of the registration certificate, the 30 of April 2003	10
Table no. 3 – Number and structure of incorporations in the Trade Register, by years, during the period of December 1990- April 2003	11
Table no.4 – The number of incorporations in the Trade Register, by counties and sources of capital, in the period December 1990 - April 2003	12
Table no. 5 – The number of incorporations in the Trade Register, by counties and categories, during the period of December 1990 – April 2003	13
Table no. 6 – The number of incorporations in the Trade Register, by field of activity and categories, during the period of December 1990 - April 2003	14

---

<b>3.2 Data for April 2003</b>	16
Table no. 7 – Operations carried on with the Trade Registers, by counties and categories, in April 2003	16
Table no. 8 – The number of incorporations in the Trade Register, by counties and sources of capital, in April 2003	17
	Page
Table no. 9 – The number of incorporations in the Trade Register, by counties and category in April 2003	18
Table no. 10 –The number of incorporations in the Trade Register, by field of activity and categories in April 2003	19
Table no. 11 – Number of companies registered and the amount of subscribed capital, by county in April 2003	21
Table no. 12– Number of registered companies and the amount of subscribed capital by category, in April 2003	22
Diagram no. 5 – Average subscribed capital on company in April 2003	22

## Explanatory Note

The Trade Register Office is set-up by Law No. 26/1990, reissued and modified by OUG No. 129/2002, became an active institution since December 1990 and is structured in two levels:

- the national level, represented by the National Trade Register Office organised under the Ministry of Justice
- the local level, represented by the 42 trade register offices attached to the law courts and co-ordinated by the National Trade Register Office

The categories of businessmen compulsory to register in the trade register are:

- natural persons tradesmen and family associations doing usually commercial acts, commercial companies, national companies, companies under state supervision, and co-operative organisations
- subsidiaries registered as commercial companies and legal persons following the legal proceedings of set-up, activity and incorporation according to the type of the legally set-up company.

### Usual Terms:

- incorporation – represents the registration of the company in the trade registry awarding the quality of legal person.

- other statutory documents – represent the official registration of the changes occurred in a company's life, such as: changes in headquarters' address, increase or decrease of the issued capital, merger, liquidation, strike-off, etc.

- strike-off – represents the removal of a company from the trade registry, due to dissolution and liquidation, being also the very moment the company loses its quality of legal person. Data also include the companies under the provisions of Law No. 314/2001.

- change of certificate – represents the obligation of companies set-up before OGU No. 76/2001 republished came in force, to request the incorporation certificate and fiscal registration certificate to be replaced with the new registration certificate containing the given unique registration code.

The ratio of these changes is being calculated as a proportion between the effective number of changes and the number of active companies due to operate the change.

- active company from the legal point of view – a company registered in the trade register and which is not affected by any of the situations leading to the temporary or permanently loss of this status (e.g. dissolution, liquidation, strike-off)

- operations represent all the records in the trade registry including incorporations, other statutory documents and strike-off of companies, irrespective of the object of activity, company's type and origin of the subscribed capital (local or foreign investment).

• **Terms used in tables and charts**

➤ **Number of companies:** represents, depending on the specific table, the number of companies incorporated in the related period, the number of companies being struck-off from the trade registry.

➤ **Amount of the subscribed capital:**

- **total, in local currency:** the amount of the subscribed capital resulted from totalising the amount subscribed (in cash and in kind) in local currency (ROL)

➤ **Regional development:**

*North-East:* Suceava, Botoşani, Neamţ, Iaşi, Bacău, Vaslui.

*South-East:* Vrancea, Galaţi, Buzău, Brăila, Tulcea, Constanţa.

*South-Muntenia:* Argeş, Dâmboviţa, Prahova, Teleorman, Giurgiu, Călăraşi, Ialomiţa.

*South-West Oltenia:* Gorj, Vâlcea, Dolj, Mehedinţi, Olt.

*West:* Arad, Caraş-Severin, Hunedoara, Timiş.

*North-West:* Bihor, Bistriţa, Cluj, Satu Mare, Sălaj, Maramureş.

*Center:* Alba, Braşov, Covasna, Harghita, Mureş, Sibiu.

*Bucharest-Ilfov:* Bucureşti, Ilfov.

CAEN code – The Classification of Activities in the National Economy was approved by HG No. 656/1997, modified by Order No 601 of the President of National Institute of Statistics being compatible with the international classification used in statistic reports and official documents. Activities are ranked upon homogeneity principle by sections, divisions, groups and clases.

Common abbreviations

- **PF** - Natural Persons Tradesman
- **AF** - Family association
- **SNC** - General Partnership
- **SCS** - Limited Partnership
- **SA** - Joint stock company
- **SRL** - Limited liability company
- **RA** - Company Under State Supervision
- **OC** - Co-operative organisation

Source:

The integrated IT system of the trade registry is designed by The National Trade Registry Office according to the provisions of the related legislation in force. The source of information is the computerised system of the trade registers handled by the Trade Register Offices attached to the law courts.

## GENERAL OVERVIEW

The statistical synthesis “Operations in the Central Trade Register” includes the results of operations recorded in the Central Trade Register until end of April 2003, upgraded on the basis of data forwarded by the Trade Register Offices in the counties.

Based on the provisional data, this paper shows the trend in the development of the business community in Romania, whatever the sector of activity, type of company and origin of the subscribed capital (local or foreign) is, as result of operations due to the legislation in force concerning the trade register, as:

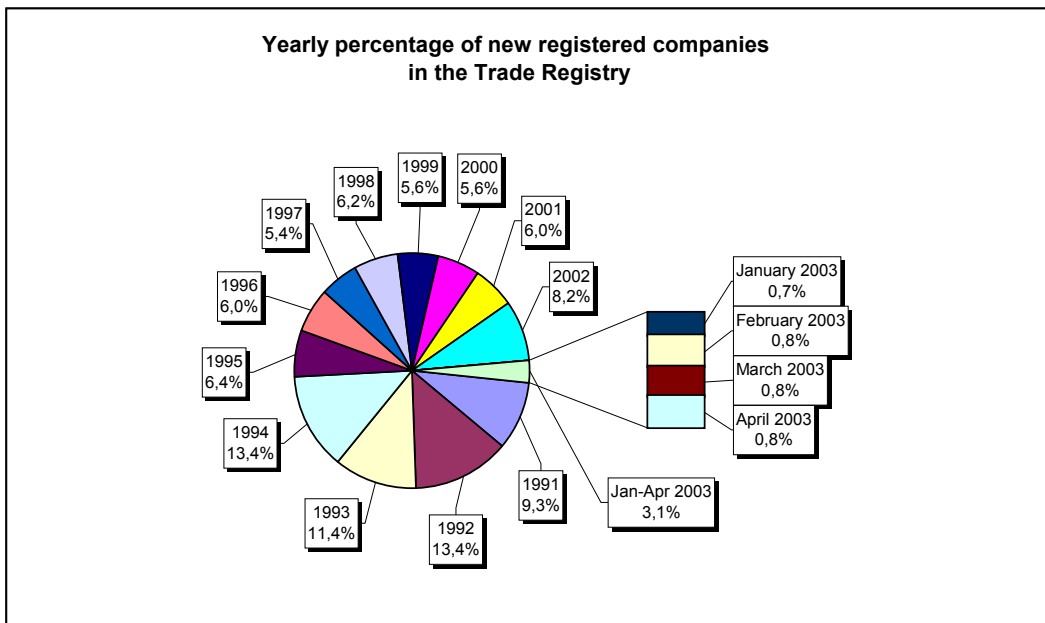
- incorporation of new companies;
- changes in statutory documents of existing companies;
- liquidation/dissolutions of companies;
- strike-off of companies;
- reissuing of registration certificates by replacement of old certificates

The present statistical synthesis does not reveal the operations concerning companies by foreign direct investment in particular, but these data are included in the general data presented hereby.

The following main aspects are highlighted through this paper:

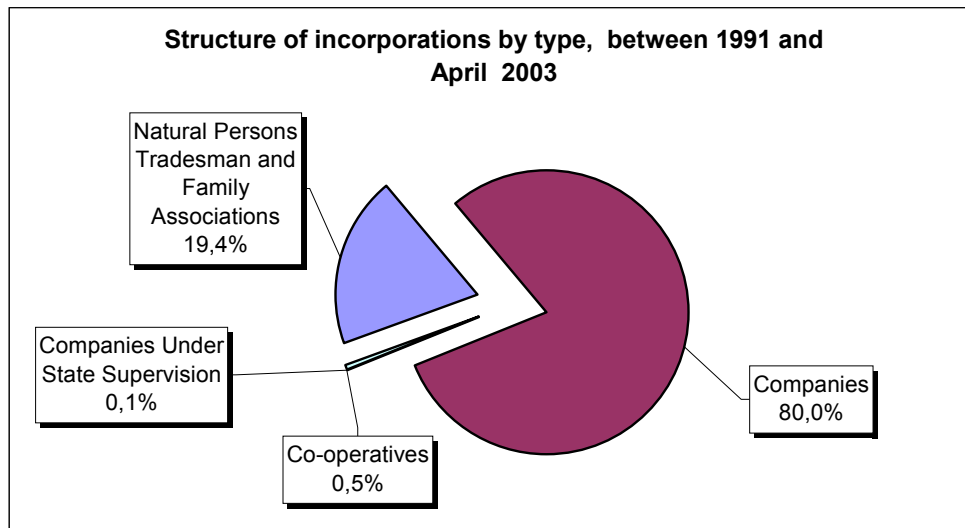
- In the period December 1990 - April 2003:
  - ✓ The total number of records in the trade registers was of 3,139,191, structured as follows: incorporations 32.7%, changes in statutory documents 61.3% and strike-off documents 5.9% (Table no. 1.a).
  - ✓ The structure by years of the number of incorporations in the trade registers, as it is showed in the diagram below, reveals the fact that around 55% of total incorporations were registered in the period of December 1990 – 1995 (Table nr 3).

Diagram no.1



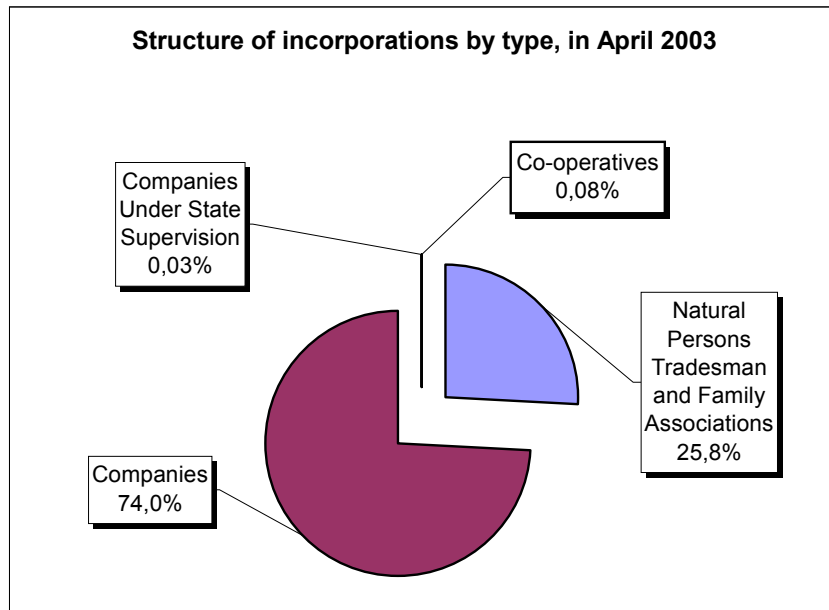
- ✓ In what concerns the origin of the issued capital, in the related period, from the total of 1,027,742 incorporations, 1,015,707 (98.83%) are companies registered by private capital, 3,546 (0.35%) by majority state capital and the rest of 8,489 (0.83%) by mixed capital (state + private).
- ✓ The structure by type of incorporations during the same period is the following: 199,145 natural persons tradesman and family associations, 822,032 companies, 1,263 companies under State supervision and 5,302 co-operative organisations (Table no. 5).

Diagram no. 2



- ✓ Between January - April 2003, 32,200 new companies were incorporated representing 3.13% of total incorporations in the period December 1990 - April 2003.
- In April 2003:
  - ✓ The total number of records is 35,317 of which 8,667 are incorporations (24.54%), 25,799 changes in statutory documents (73.05%) and 851 strike-off of companies (2.41%). The highest number of incorporations in April 2003 was registered in Bucharest Municipality, that is 1,688 incorporations of new companies (21.2% of total operations). The number of changes in statutory documents recorded in Bucharest Trade Register Office, in April 2003, was of 6,235 (78.1% of total operations) (Table no. 7).
  - ✓ The structure by type of incorporations in April is the following: 2,240 (25.85%) natural persons tradesman and family associations, 6,417 (74.04%) companies, 3 (0.03%) companies under State supervision and 7 co-operative. (Table no. 9)

Diagram no. 3



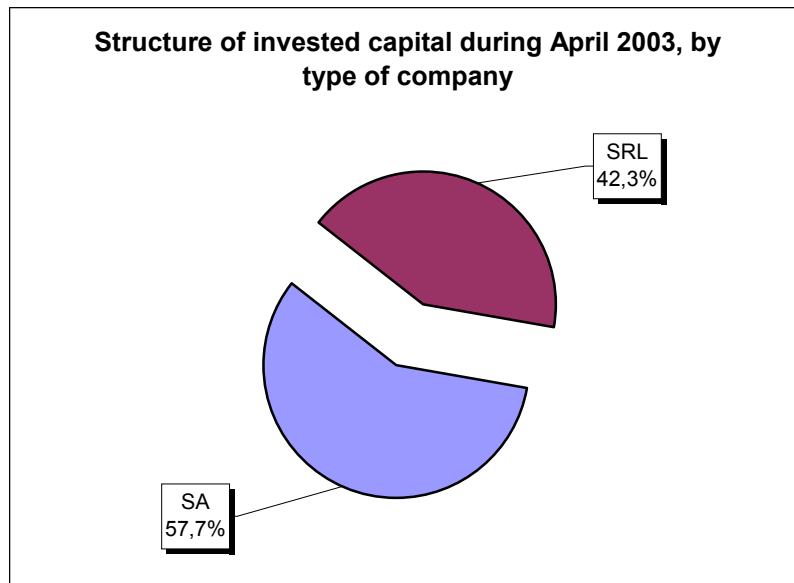
In what concerns the origin of the issued capital, from the total of 8,667 incorporations, 8,652 are companies by private capital and 15 by state capital. (state + private) (Table no. 8).

- ✓ With regard to the number of the incorporated companies and the amount of the subscribed capital, according to their legal status, 6,315 of the total number of incorporations are limited liability companies, totalising 333.5 billion ROL (42.3% of the total capital subscribed in companies) and 88 are joint-stock companies, with a total amount of 454.6 billion ROL in subscribed capital, representing 57.7% of the total capital subscribed in companies (Table no. 12).

The amount of the subscribed capital in the 6,417 new incorporated companies is of 788.1 billion ROL, that is an average of 123.5 million ROL per company.

The highest amount of the subscribed capital is registered in Bucharest Municipality reaching 209.04 billion ROL, Dolj county reaching 71 billion ROL and Gorj county, 66.5 billion ROL. The average amount of the subscribed capital per company, in April, varies a lot from county to county, from 2.4 million ROL in Teleorman county to 937.3 million ROL in Gorj county (Table no. 11).

Diagram no. 4



Note: Other types of companies, up to total, represent less than 0,01%

- The weight of incorporations of companies in total operations with the trade registers reveals the trend in increasing the number of operations due to changes in statutory documents. So, if the number of incorporations was of 64% in total operations during 1994, in 2001 it was 17% and 24.54% in April 2003.

The increasing dynamics of operations concerning changes in statutory documents, reflects at the same time:

- ✓ changes due to the companies' activity and related to shareholders, address of the registered office, and/or sector of activity, etc.
  - ✓ investment in capital of existing companies, sourcing from the registered profit included and from cession of shares or reducing of capital, etc.
  - ✓ the increasing number of records due to implementation of Law no. 64/1995 republished concerning the procedure of judiciary reorganisation and bankruptcy and of Law no. 314/2001 on regulating the status of some companies.
- The number of reissuing the incorporation certificates by replacement with the new registration certificates is significantly different from county to county. Up to 30 of April 2003, the highest rates in reissuing the certificates were registered in the following counties: Salaj 59.7%, Braşov 58.3%, Brăila 51.9%, Covasna 50.8% and Cluj 49.2%. At country's level, the average rate of reissuing of certificates is of 39.5% (Table no. 2).

- The number of strike-off of companies during December 1990 – April 2003 is very different by county. The highest number of strike-off of companies registers the Bucharest Municipality (63,407 that is 34% of the total number of incorporations). The following next counties are Constanța (12,275 and 27.95%) and Timiș (8,337 and 25%).

The data and the particular aspects in this general overview reveals the significant dimension of the activity in the trade register offices, in order to insure the legality and order in functioning of all types of companies, compulsory by law to request incorporation with the trade register before starting any activity and to request as well to be registered any changes in statutory documents due to deeds and actions stipulated by law to be registered, during the lifetime of the company and in the end of activity.

**Ministry of Justice**  
**The National Trade Register Office**

**General Director NTRO,**  
**Alina Anca BALACIU**

Table no. 1

**Operations registered in the Trade Register, by categories  
during the period of December 1990 - April 2003, in total by country and counties,  
- rate of categories of operations in total operations/country -**

Counties	Total of registered operations		out of which :									
			Registered companies		Changes in statutory documents		out of which :				Strike off companies	
	of liquidation, dissolution						out of which :					
	No.	%	No.	%	No.	%	No.	%	No.	%	No.	%
0	1	2	3	4	5	6	7	8	9	10	11	12
<b>Total ROMÂNIA</b>	<b>3139191</b>	<b>100,0</b>	<b>1027742</b>	<b>100,0</b>	<b>1924720</b>	<b>100,0</b>	<b>184652</b>	<b>100,0</b>	<b>175811</b>	<b>100,0</b>	<b>186729</b>	<b>100,0</b>
ALBA	38590	1,2	14539	1,4	23456	1,2	3953	2,1	3596	2,0	595	0,3
ARAD	69194	2,2	23132	2,3	41883	2,2	3295	1,8	2974	1,7	4179	2,2
ARGES	67510	2,2	25757	2,5	40829	2,1	4149	2,2	4120	2,3	924	0,5
BACAU	60001	1,9	26925	2,6	31740	1,6	6283	3,4	5278	3,0	1336	0,7
BIHOR	84833	2,7	29870	2,9	53669	2,8	4808	2,6	4599	2,6	1294	0,7
BISTRITA-NASAUD	35604	1,1	12672	1,2	20883	1,1	1215	0,7	1120	0,6	2049	1,1
BOTOSANI	27696	0,9	11824	1,2	14245	0,7	1641	0,9	1563	0,9	1627	0,9
BRASOV	106049	3,4	31861	3,1	68426	3,6	5018	2,7	4893	2,8	5762	3,1
BRAILA	45293	1,4	14195	1,4	30681	1,6	4595	2,5	4509	2,6	417	0,2
BUZAU	59469	1,9	19176	1,9	37213	1,9	2251	1,2	2109	1,2	3080	1,6
CARAS-SEVERIN	37188	1,2	13114	1,3	21244	1,1	1943	1,1	1922	1,1	2830	1,5
CALARASI	28562	0,9	11190	1,1	15582	0,8	70	0,0			1790	1,0
CLUJ	112870	3,6	43706	4,3	67383	3,5	8265	4,5	8113	4,6	1781	1,0
CONSTANTA	135344	4,3	43913	4,3	79156	4,1	11479	6,2	10621	6,0	12275	6,6
COVASNA	27771	0,9	8765	0,9	17469	0,9	1182	0,6	1175	0,7	1537	0,8
DAMBOVITA	49826	1,6	20538	2,0	24647	1,3	3026	1,6	2951	1,7	4641	2,5
DOLJ	76918	2,5	27258	2,7	42915	2,2	5870	3,2	5635	3,2	6745	3,6
GALATI	90164	2,9	25419	2,5	58161	3,0	5417	2,9	5344	3,0	6584	3,5
GIURGIU	21111	0,7	8409	0,8	10361	0,5	29	0,0			2341	1,3
GORJ	41340	1,3	12709	1,2	25494	1,3	2715	1,5	2667	1,5	3137	1,7
HARGHITA	32723	1,0	12073	1,2	20221	1,1	67	0,0			429	0,2
HUNEDOARA	54817	1,7	21615	2,1	29599	1,5	3051	1,7	2944	1,7	3603	1,9
IALOMITA	31441	1,0	10508	1,0	18756	1,0	1674	0,9	1587	0,9	2177	1,2
IASI	107742	3,4	30353	3,0	73374	3,8	4715	2,6	4227	2,4	4015	2,2
MARAMURES	72947	2,3	28278	2,8	41575	2,2	3084	1,7	2924	1,7	3094	1,7
MEHEDINTI	33592	1,1	12580	1,2	17420	0,9	3137	1,7	3085	1,8	3592	1,9
MURES	64560	2,1	25845	2,5	37848	2,0	3063	1,7	2944	1,7	867	0,5
NEAMT	55341	1,8	22085	2,1	29771	1,5	2747	1,5	2435	1,4	3485	1,9
OLT	41955	1,3	15918	1,5	22995	1,2	2089	1,1	2033	1,2	3042	1,6
PRAHOVA	117425	3,7	33297	3,2	77912	4,0	4192	2,3	3935	2,2	6216	3,3
SALAJ	19762	0,6	8125	0,8	10630	0,6	716	0,4	683	0,4	1007	0,5
SATU MARE	48081	1,5	16755	1,6	28410	1,5	2929	1,6	2918	1,7	2916	1,6
SIBIU	71439	2,3	18026	1,8	50270	2,6	2597	1,4	2584	1,5	3143	1,7
SUCEAVA	72019	2,3	28355	2,8	40079	2,1	2418	1,3	2387	1,4	3585	1,9
TELEORMAN	38157	1,2	12433	1,2	25292	1,3	1543	0,8	1508	0,9	432	0,2
TIMIS	133137	4,2	33278	3,2	91522	4,8	7533	4,1	7273	4,1	8337	4,5
TULCEA	31885	1,0	11616	1,1	18632	1,0	1177	0,6	1003	0,6	1637	0,9
VASLUI	35120	1,1	13045	1,3	20577	1,1	1590	0,9	1386	0,8	1498	0,8
VALCEA	50411	1,6	17169	1,7	30634	1,6	2045	1,1	1888	1,1	2608	1,4
VRANCEA	34702	1,1	12448	1,2	21622	1,1	1687	0,9	1593	0,9	632	0,3
MUN. BUCURESTI	747459	23,8	204934	19,9	479118	24,9	53506	29,0	51406	29,2	63407	34,0
ILFOV	29143	0,9	14034	1,4	13026	0,7	1888	1,0	1879	1,1	2083	1,1

\*) according to the effect of Law No. 314/2001, art.1 și art. 6

\*\*\* Less than 0,01%

Table no. 1.a

**Operations registered in the Trade Register, by categories  
during the period of December 1990 - April 2003, in total by country and counties,  
- counties' rate in total country -**

Counties	Total of registered operations		out of which :								Strike off companies	
			Registered companies		Changes in statutory documents		out of which :					
	No. %						No. %		of liquidation, dissolution		out of which :	
			No. %		No. %							
0	1	2	3	4	5	6	7	8	9	10	11	12
<b>Total ROMÂNIA</b>	<b>3139191</b>	<b>100,0</b>	<b>1027742</b>	<b>32,7</b>	<b>1924720</b>	<b>61,3</b>	<b>184652</b>	<b>5,9</b>	<b>175811</b>	<b>5,6</b>	<b>186729</b>	<b>5,9</b>
ALBA	38590	100,0	14539	37,7	23456	60,8	3953	10,2	3596	9,3	595	1,5
ARAD	69194	100,0	23132	33,4	41883	60,5	3295	4,8	2974	4,3	4179	6,0
ARGES	67510	100,0	25757	38,2	40829	60,5	4149	6,1	4120	6,1	924	1,4
BACAU	60001	100,0	26925	44,9	31740	52,9	6283	10,5	5278	8,8	1336	2,2
BIHOR	84833	100,0	29870	35,2	53669	63,3	4808	5,7	4599	5,4	1294	1,5
BISTRITA-NASAUD	35604	100,0	12672	35,6	20883	58,7	1215	3,4	1120	3,1	2049	5,8
BOTOSANI	27696	100,0	11824	42,7	14245	51,4	1641	5,9	1563	5,6	1627	5,9
BRASOV	106049	100,0	31861	30,0	68426	64,5	5018	4,7	4893	4,6	5762	5,4
BRAILA	45293	100,0	14195	31,3	30681	67,7	4595	10,1	4509	10,0	417	0,9
BUZAU	59469	100,0	19176	32,2	37213	62,6	2251	3,8	2109	3,5	3080	5,2
CARAS-SEVERIN	37188	100,0	13114	35,3	21244	57,1	1943	5,2	1922	5,2	2830	7,6
CALARASI	28562	100,0	11190	39,2	15582	54,6	70	0,2			1790	6,3
CLUJ	112870	100,0	43706	38,7	67383	59,7	8265	7,3	8113	7,2	1781	1,6
CONSTANTA	135344	100,0	43913	32,4	79156	58,5	11479	8,5	10621	7,8	12275	9,1
COVASNA	27771	100,0	8765	31,6	17469	62,9	1182	4,3	1175	4,2	1537	5,5
DAMBOVITA	49826	100,0	20538	41,2	24647	49,5	3026	6,1	2951	5,9	4641	9,3
DOLJ	76918	100,0	27258	35,4	42915	55,8	5870	7,6	5635	7,3	6745	8,8
GALATI	90164	100,0	25419	28,2	58161	64,5	5417	6,0	5344	5,9	6584	7,3
GIURGIU	21111	100,0	8409	39,8	10361	49,1	29	0,1			2341	11,1
GORJ	41340	100,0	12709	30,7	25494	61,7	2715	6,6	2667	6,5	3137	7,6
HARGHITA	32723	100,0	12073	36,9	20221	61,8	67	0,2			429	1,3
HUNEDOARA	54817	100,0	21615	39,4	29599	54,0	3051	5,6	2944	5,4	3603	6,6
IALOMITA	31441	100,0	10508	33,4	18756	59,7	1674	5,3	1587	5,0	2177	6,9
IASI	107742	100,0	30353	28,2	73374	68,1	4715	4,4	4227	3,9	4015	3,7
MARAMURES	72947	100,0	28278	38,8	41575	57,0	3084	4,2	2924	4,0	3094	4,2
MEHEDINTI	33592	100,0	12580	37,4	17420	51,9	3137	9,3	3085	9,2	3592	10,7
MURES	64560	100,0	25845	40,0	37848	58,6	3063	4,7	2944	4,6	867	1,3
NEAMT	55341	100,0	22085	39,9	29771	53,8	2747	5,0	2435	4,4	3485	6,3
OLT	41955	100,0	15918	37,9	22995	54,8	2089	5,0	2033	4,8	3042	7,3
PRAHOVA	117425	100,0	33297	28,4	77912	66,4	4192	3,6	3935	3,4	6216	5,3
SALAJ	19762	100,0	8125	41,1	10630	53,8	716	3,6	683	3,5	1007	5,1
SATU MARE	48081	100,0	16755	34,8	28410	59,1	2929	6,1	2918	6,1	2916	6,1
SIBIU	71439	100,0	18026	25,2	50270	70,4	2597	3,6	2584	3,6	3143	4,4
SUCEAVA	72019	100,0	28355	39,4	40079	55,7	2418	3,4	2387	3,3	3585	5,0
TELEORMAN	38157	100,0	12433	32,6	25292	66,3	1543	4,0	1508	4,0	432	1,1
TIMIS	133137	100,0	33278	25,0	91522	68,7	7533	5,7	7273	5,5	8337	6,3
TULCEA	31885	100,0	11616	36,4	18632	58,4	1177	3,7	1003	3,1	1637	5,1
VASLUI	35120	100,0	13045	37,1	20577	58,6	1590	4,5	1386	3,9	1498	4,3
VALCEA	50411	100,0	17169	34,1	30634	60,8	2045	4,1	1888	3,7	2608	5,2
VRANCEA	34702	100,0	12448	35,9	21622	62,3	1687	4,9	1593	4,6	632	1,8
MUN. BUCURESTI	747459	100,0	204934	27,4	479118	64,1	53506	7,2	51406	6,9	63407	8,5
ILFOV	29143	100,0	14034	48,2	13026	44,7	1888	6,5	1879	6,4	2083	7,1

\*) according to the effect of Law No. 314/2001, art.1 și art. 6

\*\*\* Less than 0,01%

Table no. 2

**Status of reissuing the incorporation certificate by exchange of the  
registration certificate, the 30 of April 2003**

County	Companies having to request exchange of certificate		Companies having done the exchange of certificate		Exchange rate (3/1)
	Number	%	Number	%	%
0	1	2	3	4	5
<b>Total of ROMÂNIA</b>	<b>649958</b>	<b>100,0</b>	<b>256967</b>	<b>100,0</b>	<b>39,5</b>
ALBA	9133	1,4	3479	1,4	38,1
ARAD	15417	2,4	4446	1,7	28,8
ARGES	17441	2,7	7505	2,9	43,0
BACAU	19139	2,9	5903	2,3	30,8
BIHOR	18809	2,9	7466	2,9	39,7
BISTRITA-NASAUD	9065	1,4	3323	1,3	36,7
BOTOSANI	8459	1,3	2843	1,1	33,6
BRASOV	17310	2,7	10097	3,9	58,3
BRAILA	8834	1,4	4588	1,8	51,9
BUZAU	13141	2,0	5040	2,0	38,4
CARAS-SEVERIN	8060	1,2	2998	1,2	37,2
CALARASI	7945	1,2	2169	0,8	27,3
CLUJ	21519	3,3	10594	4,1	49,2
CONSTANTA	23158	3,6	11316	4,4	48,9
COVASNA	6400	1,0	3251	1,3	50,8
DAMBOVITA	13399	2,1	4332	1,7	32,3
DOLJ	17009	2,6	6336	2,5	37,3
GALATI	14979	2,3	6460	2,5	43,1
GIURGIU	4723	0,7	1741	0,7	36,9
GORJ	7532	1,2	2668	1,0	35,4
HARGHITA	8018	1,2	2976	1,2	37,1
HUNEDOARA	15342	2,4	4781	1,9	31,2
IALOMITA	6790	1,0	2398	0,9	35,3
IASI	22369	3,4	8514	3,3	38,1
MARAMURES	21522	3,3	8043	3,1	37,4
MEHEDINTI	7769	1,2	2242	0,9	28,9
MURES	18160	2,8	6547	2,5	36,1
NEAMT	15173	2,3	4872	1,9	32,1
OLT	11090	1,7	4242	1,7	38,3
PRAHOVA	21987	3,4	9210	3,6	41,9
SALAJ	5430	0,8	3244	1,3	59,7
SATU MARE	11158	1,7	3544	1,4	31,8
SIBIU	12203	1,9	5804	2,3	47,6
SUCEAVA	21157	3,3	6114	2,4	28,9
TELEORMAN	9105	1,4	3326	1,3	36,5
TIMIS	20071	3,1	8416	3,3	41,9
TULCEA	8177	1,3	2637	1,0	32,2
VASLUI	9192	1,4	3154	1,2	34,3
VALCEA	10878	1,7	4861	1,9	44,7
VRANCEA	7308	1,1	2860	1,1	39,1
MUN. BUCURESTI	118031	18,2	49667	19,3	42,1
ILFOV	7556	1,2	2960	1,2	39,2

Note: Figures in column 1 are being issued in accordance with the methodological note.

\*\*\* Sub 0,01%

Table no.3

**Number and structure of incorporations in the Trade Register, by years,  
during the period of December 1990 - April 2003**

Period (year, month)	Registered companies	Percentage	
	No.	%	%
0	1	2	3
<b>Total, 30 April 2002,</b> out of which	<b>1027742</b>	<b>100,00</b>	
Year 1990	81	0,01	
Year 1991	95840	9,33	
Year 1992	137456	13,37	
Year 1993	117078	11,39	
Year 1994	137445	13,37	
Year 1995	65479	6,37	
Year 1996	62089	6,04	
Year 1997	55663	5,42	
Year 1998	63878	6,22	
Year 1999	57197	5,57	
Year 2000	57291	5,57	
Year 2001	61265	5,96	
Year 2002	84780	8,25	
<b>Year 2003 (1.I - 31.XII),</b> out of which :	<b>32200</b>	<b>3,13</b>	<b>100,0</b>
January	6706		20,8
February	8659		26,9
March	8168		25,4
April	8667		26,9

*Note: Column 2 reveals the annual structure of incorporations; column 3 reveals the structure by months during the current year.*

\*\*\* Less than 0,01%

Table no. 4

**The number of incorporations in the Trade Register, by counties and sources of capital, in the period December 1990 - April 2003**

Counties	Total		out of which:					Ranking by: *	
			Private capital			State majority capital			Mixed capital (state+private)
			out of which:			out of which:			
			PF+AF	Companies	OC	RA	Companies		Companies
No.	%	No.	No.	No.	No.	No.	No.		
0	1	2	3	4	5	6	7	8	9
<b>Total ROMÂNIA</b>	<b>1027742</b>	<b>100,0</b>	<b>199145</b>	<b>811260</b>	<b>5302</b>	<b>1263</b>	<b>2283</b>	<b>8489</b>	<b>X</b>
ALBA	14539	1,4	3467	10692	141	31	38	170	25
ARAD	23133	2,3	7799	14781	155	26	40	332	16
ARGES	25757	2,5	6722	18658	168	29	29	151	14
BACAU	26925	2,6	8494	17976	158	32	42	223	12
BIHOR	29870	2,9	2939	26388	144	31	62	306	8
BISTRITA-NASAUD	12672	1,2	4036	8382	98	18	29	109	31
BOTOSANI	11824	1,2	3953	7440	121	21	170	119	36
BRASOV	31861	3,1	4548	26920	114	36	79	164	6
BRAILA	14195	1,4	1981	11885	95	26	43	165	26
BUZAU	19176	1,9	3742	15095	142	25	42	130	20
CARAS-SEVERIN	13114	1,3	4502	8277	102	33	65	135	28
CALARASI	11190	1,1	2710	8210	86	16	75	93	38
CLUJ	43706	4,3	6831	36375	150	49	40	261	3
CONSTANTA	43913	4,3	5020	38064	202	48	45	534	2
COVASNA	8765	0,9	2013	6521	67	23	32	109	40
DAMBOVITA	20538	2,0	9494	10656	134	28	75	151	19
DOLJ	27258	2,7	2899	23904	161	39	54	201	11
GALATI	25419	2,5	3380	21683	134	28	51	143	15
GIURGIU	8409	0,8	1023	7067	80	20	109	110	41
GORJ	12709	1,2	1635	10661	184	50	79	100	30
HARGHITA	12073	1,2	2220	9487	85	23	30	228	35
HUNEDOARA	21615	2,1	4885	16242	81	37	90	280	18
IALOMITA	10508	1,0	3668	6617	73	15	46	89	39
IASI	30353	3,0	6793	22985	132	32	68	343	7
MARAMURES	28278	2,8	11631	16334	119	34	39	121	10
MEHEDINTI	12580	1,2	2881	9475	82	18	26	98	32
MURES	25845	2,5	8874	16589	154	28	33	167	13
NEAMT	22085	2,1	6611	15099	153	28	29	165	17
OLT	15918	1,5	5909	9638	161	26	61	123	24
PRAHOVA	33297	3,2	7417	25331	177	49	62	261	4
SALAJ	8125	0,8	2192	5720	107	18	27	61	42
SATU MARE	16755	1,6	4033	12442	88	18	40	134	23
SIBIU	18026	1,8	2251	15369	115	26	108	157	21
SUCEAVA	28355	2,8	13125	14720	201	28	61	220	9
TELEORMAN	12433	1,2	3531	8516	151	21	37	177	34
TIMIS	33278	3,2	2233	30457	140	36	68	344	5
TULCEA	11616	1,1	3097	8181	66	18	42	212	37
VASLUI	13045	1,3	5905	6839	109	16	41	135	29
VALCEA	17169	1,7	5711	11102	168	39	37	112	22
VRANCEA	12448	1,2	2505	9684	103	16	27	113	33
MUN. BUCURESTI	204933	19,9	5188	198299	138	108	100	1100	1
ILFOV	14034	1,4	1297	12499	63	20	12	143	27

\*) The total number of incorporations (col 1)

\*\*\* Less than 0,01%

Table no. 5

**The number of incorporations in the Trade Register,  
by counties and categories, during the period of  
December 1990 - April 2003**

County	Total		out of which:						RA	OC
			PF+AF	companies: 822032						
	SNC	SCS		SRL	SA	No.	No.			
	No.	%	No.	No.	No.			No.	No.	No.
0	1	2	3	4	5	6	7	8	9	
<b>Total ROMÂNIA</b>	<b>1027742</b>	<b>100,0</b>	<b>199145</b>	<b>32539</b>	<b>1526</b>	<b>759156</b>	<b>28806</b>	<b>1263</b>	<b>5302</b>	
ALBA	14539	1,4	3467	888	11	9486	515	31	141	
ARAD	23132	2,3	7799	48	5	14481	617	26	155	
ARGES	25757	2,5	6722	107	13	17977	741	29	168	
BACAU	26925	2,6	8494	1299	4	16283	654	32	158	
BIHOR	29870	2,9	2939	125	47	25743	841	31	144	
BISTRITA-NASAUD	12672	1,2	4036	146	20	7975	379	18	98	
BOTOSANI	11824	1,2	3953	468	1	6837	423	21	121	
BRASOV	31861	3,1	4548	239	19	26183	722	36	114	
BRAILA	14195	1,4	1981	376	12	11225	480	26	95	
BUZAU	19176	1,9	3742	3745	46	10957	519	25	142	
CARAS-SEVERIN	13114	1,3	4502	113	6	7922	436	33	102	
CALARASI	11190	1,1	2710	609	3	7440	326	16	86	
CLUJ	43706	4,3	6831	2105	18	33488	1065	49	150	
CONSTANTA	43913	4,3	5020	311	23	36970	1339	48	202	
COVASNA	8765	0,9	2013	146	3	6236	277	23	67	
DAMBOVITA	20538	2,0	9494	59	8	10372	443	28	134	
DOLJ	27258	2,7	2899	1557	8	21802	792	39	161	
GALATI	25419	2,5	3380	1573	6	19562	736	28	134	
GIURGIU	8409	0,8	1023	35	8	6937	306	20	80	
GORJ	12709	1,2	1635	28	1	10374	437	50	184	
HARGHITA	12073	1,2	2220	62	6	9225	452	23	85	
HUNEDOARA	21615	2,1	4885	1165	98	14756	593	37	81	
IALOMITA	10508	1,0	3668	266	11	6162	313	15	73	
IASI	30353	3,0	6793	505	111	21871	907	32	132	
MARAMURES	28278	2,8	11631	1924	23	14010	537	34	119	
MEHEDINTI	12580	1,2	2881	427	3	8877	292	18	82	
MURES	25845	2,5	8874	37	34	16113	605	28	154	
NEAMT	22085	2,1	6611	3292	30	11356	615	28	153	
OLT	15918	1,5	5909	1611	1	7749	461	26	161	
PRAHOVA	33297	3,2	7417	3112	12	21741	789	49	177	
SALAJ	8125	0,8	2192	600	4	4938	266	18	107	
SATU MARE	16755	1,6	4033	283	4	11896	433	18	88	
SIBIU	18026	1,8	2251	771	43	14232	588	26	115	
SUCEAVA	28355	2,8	13125	438	8	14024	531	28	201	
TELEORMAN	12433	1,2	3531	271	399	7671	389	21	151	
TIMIS	33278	3,2	2233	573	22	29136	1138	36	140	
TULCEA	11616	1,1	3097	1360	112	6510	453	18	66	
VASLUI	13045	1,3	5905	90	11	6532	382	16	109	
VALCEA	17169	1,7	5711	361	5	10460	425	39	168	
VRANCEA	12448	1,2	2505	355	9	9038	422	16	103	
MUN. BUCURESTI	204934	19,9	5188	1013	292	192486	5708	108	138	
ILFOV	14034	1,4	1297	46	26	12123	459	20	63	

Table no. 6

**The number of incorporations in the Trade Register, by field of activity\*  
and categories, during the period of  
December 1990 - April 2003**

CAEN segment	Field of activity	Total		out of which:						
				PF+AF	companies: 822032				RA	OC
					SNC	SCS	SRL	SA		
					No.	No.	No.	No.		
0	1	2	3	4	5	6	7	8	9	10
	<b>Total ROMÂNIA</b>	<b>1027742</b>	<b>100,0</b>	<b>199145</b>	<b>32539</b>	<b>1526</b>	<b>759156</b>	<b>28806</b>	<b>1263</b>	<b>5302</b>
1	Agriculture, hunting and related service activities	42563	4,1	3646	2023	43	32997	3700	37	117
2	Forestry, logging and related service activities	5506	0,5	599	152	3	4484	214	46	8
5	Fishing, fish farming and related service activities	1146	0,1	380	17	3	694	52		
10	Mining of coal and lignite; extraction of peat	62	0,0	1			45	12	4	
11	Extraction of crude petroleum and natural gas; service activities incidental to oil and gas extraction, excluding surveying	256	0,0	2	1		103	104	46	
12	Mining of uranium and thorium ores	133	0,0	32			95	6		
13	Mining of metal ores	507	0,0	162			284	53	8	
14	Other mining and quarrying	1016	0,1	83	9	1	770	150	2	1
15	Manufacture of food products and beverages	62286	6,1	8315	3260	149	48537	1772	5	248
16	Manufacture of tobacco products	273	0,0	47			195	30	1	
17	Manufacture of textiles	9838	1,0	1652	556	16	7075	395		144
18	Manufacture of wearing apparel; dressing and dyeing of fur	16142	1,6	2887	874	37	11700	340	1	303
19	Tanning and dressing of leather; manufacture of luggage, handbags, saddlery, harness and footwear	4045	0,4	561	112	6	3197	117	1	51
20	Manufacture of wood and of products of wood and cork, except furniture; manufacture of articles of straw and plaiting materials	15573	1,5	3361	574	28	11094	465	9	42
21	Manufacture of pulp, paper and paper products	1292	0,1	62	21	1	1101	94		13
22	Publishing, printing and reproduction of recorded media	8646	0,8	570	317	21	7340	375	13	10
23	Manufacture of coke, refined petroleum products and nuclear fuel	217	0,0	21			163	31	2	
24	Manufacture of chemicals and chemical products	3202	0,3	86	89	1	2652	362	6	6
25	Manufacture of rubber and plastic products	4526	0,4	396	313	7	3535	250		24
26	Manufacture of other non-metallic mineral products	5146	0,5	803	212	6	3754	353	5	13
27	Manufacture of basic metals	2181	0,2	137	39	3	1796	196	3	7
28	Manufacture of fabricated metal products, except machinery and equipment	10015	1,0	1152	361	22	7732	675	11	62
29	Manufacture of machinery and equipment n.e.c.	2979	0,3	49	44	7	2463	392	19	5
30	Manufacture of office machinery and computers	1547	0,2	11	25	3	1428	80		
31	Manufacture of electrical machinery and apparatus n.e.c.	1511	0,1	78	44	4	1242	137		6
32	Manufacture of radio, television and communication equipment and apparatus	684	0,1	18	14	3	579	69		1
33	Manufacture of medical, precision and optical instruments, watches and clocks	1462	0,1	193	16	2	1161	86		4
34	Manufacture of motor vehicles, trailers and semi-trailers	720	0,1	17	31	3	552	115		2
35	Manufacture of other transport equipment	1353	0,1	167	86	7	904	114	73	2
36	Manufacture of furniture; manufacturing n.e.c.	9827	1,0	2035	284	15	7020	311	5	157
37	Recycling	3191	0,3	274	51	5	2698	162		1
40	Electricity, gas, steam and hot water supply	2625	0,3	826	3	1	1256	451	88	
41	Collection, purification and distribution of water	3428	0,3	1602	2		1595	158	71	
45	Construction	41295	4,0	6491	608	40	31840	2187	53	76

**Table no. 6**  
(continuing)

**The number of incorporations in the Trade Register, by field of activity\*  
and categories, during the period of  
December 1990 - April 2003**

CAEN segment	Field of activity	Total		out of which:						
				PF+AF	companies: 822032				RA	OC
					SNC	SCS	SRL	SA		
0	1	No.	%	No.	No.	No.	No.	No.	No.	
		2	3	4	5	6	7	8	9	10
	<b>Total ROMÂNIA</b>	<b>1027742</b>	<b>100,0</b>	<b>199145</b>	<b>32539</b>	<b>1526</b>	<b>759156</b>	<b>28806</b>	<b>1263</b>	<b>5302</b>
50	Sale, maintenance and repair of motor vehicles and motorcycles; retail sale of automotive fuel	39727	3,9	3588	1242	34	33813	1003	5	42
51	Wholesale trade and commission trade, except of motor vehicles and motorcycles	154870	15,1	9543	4523	146	137274	3068	35	281
52	Retail trade, except of motor vehicles and motorcycles; repair of personal and household goods	372422	36,2	114076	11900	555	241145	2431	5	2309
55	Hotels and restaurants	39268	3,8	8864	1634	126	27813	663	73	95
60	Land transport; transport via pipelines	37497	3,6	9516	842	35	26062	999	33	10
61	Water transport	702	0,1	114	82	8	367	60	70	1
62	Air transport	252	0,0	17			184	41	10	
63	Supporting and auxiliary transport activities; activities of travel agencies	6546	0,6	291	220	14	5511	407	93	10
64	Post and telecommunications	3158	0,3	114	11	1	2755	263	11	3
65	Financial intermediation, except insurance and pension funding	4263	0,4	119	15		1364	1736	2	1027
66	Insurance and pension funding, except compulsory social security	1732	0,2	477	1		482	771		1
67	Activities auxiliary to financial intermediation	2930	0,3	342	6	2	2322	250		8
70	Real estate activities	6857	0,7	255	28	6	6173	372	17	6
71	Renting of machinery and equipment without operator and of personal and household goods	1822	0,2	279	116	8	1263	85	70	1
72	Computer and related activities	10078	1,0	771	111	12	8843	336	2	3
73	Research and development	1178	0,1	127	11	2	843	151	42	2
74	Other business activities	42816	4,2	5808	727	61	34671	1384	106	58
75	Public administration and defence; compulsory social security	298	0,0	55	5		197	23	17	1
80	Education	3188	0,3	1266	62	5	1794	61		
85	Health and social work	10110	1,0	1563	232	15	8229	67	3	1
90	Sewage and refuse disposal, sanitation and similar activities	447	0,0	29	13	2	301	83	18	
91	Activities of membership organizations n.e.c.	141	0,0	40	1		84	13		3
92	Recreational, cultural and sporting activities	7807	0,8	1072	196	14	6226	221	66	12
93	Other service activities	14038	1,4	3955	417	42	9118	305	76	124
95	Activities of households as employers of domestic staff	349	0,0	118	6	1	220	3		1
99	Extra-territorial organizations and bodies	53	0,0	30			21	2		

\*)Field of activity declared when registered, according to CAEN classification

Table no. 7

**Operations carried on with the Trade Registers,  
by counties and categories,  
in April 2003**

County	Total of operations carried on		out of which:							
			New incorporations		Changes in statutory documents		out of which: of liquidation, dissolution		Strike off companies	
	No.	%	No.	%	No.	%	No.	%	No.	%
0	1	2	3	4	5	6	7	8	9	10
<b>Total ROMÂNIA</b>	<b>35317</b>	<b>100,0</b>	<b>8667</b>	<b>24,5</b>	<b>25799</b>	<b>73,0</b>	<b>254</b>	<b>0,7</b>	<b>851</b>	<b>2,4</b>
ALBA	472	100,0	179	37,9	276	58,5	1	0,2	17	3,6
ARAD	650	100,0	190	29,2	450	69,2	3	0,5	10	1,5
ARGES	578	100,0	184	31,8	381	65,9	1	0,2	13	2,2
BACAU	515	100,0	191	37,1	311	60,4	8	1,6	13	2,5
BIHOR	1110	100,0	372	33,5	699	63,0	8	0,7	39	3,5
BISTRITA-NASAUD	368	100,0	77	20,9	277	75,3	2	0,5	14	3,8
BOTOSANI	321	100,0	101	31,5	213	66,4	2	0,6	7	2,2
BRASOV	770	100,0	300	39,0	464	60,3	3	0,4	6	0,8
BRAILA	365	100,0	112	30,7	253	69,3	2	0,5		
BUZAU	536	100,0	145	27,1	364	67,9	2	0,4	27	5,0
CARAS-SEVERIN	340	100,0	101	29,7	231	67,9	1	0,3	8	2,4
CALARASI	231	100,0	70	30,3	157	68,0			4	1,7
CLUJ	2799	100,0	349	12,5	2438	87,1	6	0,2	12	0,4
CONSTANTA	1822	100,0	369	20,3	1430	78,5	21	1,2	23	1,3
COVASNA	358	100,0	68	19,0	286	79,9			4	1,1
DAMBOVITA	431	100,0	113	26,2	294	68,2	4	0,9	24	5,6
DOLJ	939	100,0	227	24,2	615	65,5	94	10,0	97	10,3
GALATI	830	100,0	216	26,0	613	73,9	5	0,6	1	0,1
GIURGIU	236	100,0	66	28,0	166	70,3			4	1,7
GORJ	411	100,0	117	28,5	289	70,3	1	0,2	5	1,2
HARGHITA	710	100,0	174	24,5	532	74,9	2	0,3	4	0,6
HUNEDOARA	427	100,0	102	23,9	318	74,5	1	0,2	7	1,6
IALOMITA	259	100,0	82	31,7	172	66,4	2	0,8	5	1,9
IASI	2075	100,0	331	16,0	1737	83,7	3	0,1	7	0,3
MARAMURES	718	100,0	177	24,7	518	72,1	5	0,7	23	3,2
MEHEDINTI	232	100,0	79	34,1	148	63,8	1	0,4	5	2,2
MURES	638	100,0	176	27,6	451	70,7			11	1,7
NEAMT	602	100,0	187	31,1	401	66,6	6	1,0	14	2,3
OLT	446	100,0	101	22,6	328	73,5	1	0,2	17	3,8
PRAHOVA	1227	100,0	267	21,8	937	76,4	2	0,2	23	1,9
SALAJ	221	100,0	121	54,8	99	44,8			1	0,5
SATU MARE	1215	100,0	97	8,0	834	68,6	2	0,2	284	23,4
SIBIU	689	100,0	194	28,2	488	70,8	1	0,1	7	1,0
SUCEAVA	527	100,0	182	34,5	332	63,0	3	0,6	13	2,5
TELEORMAN	253	100,0	64	25,3	188	74,3	1	0,4	1	0,4
TIMIS	1025	100,0	257	25,1	763	74,4	6	0,6	5	0,5
TULCEA	208	100,0	159	76,4	37	17,8			12	5,8
VASLUI	309	100,0	99	32,0	201	65,0	10	3,2	9	2,9
VALCEA	661	100,0	290	43,9	360	54,5	2	0,3	11	1,7
VRANCEA	384	100,0	110	28,6	270	70,3	16	4,2	4	1,0
MUN. BUCURESTI	7980	100,0	1688	21,2	6235	78,1	22	0,3	57	0,7
ILFOV	429	100,0	183	42,7	243	56,6	4	0,9	3	0,7

\*) by effect of implementation of Law no. 314/2001, art.1 and art. 6

\*\*\* Less than 0,01%

Table no. 8

**The number of incorporations in the Trade Register,  
by counties and sources of capital,  
in April 2003**

County	Total		out of which:					Rnking by: *	
			Private capital			State majority capital			Mixed capital (state+private)
			out of which:			out of which:			
			PF+AF	Companies	OC	RA	Companies		Companies
No.	%	No.	No.	No.	No.	No.	No.		
0	1	2	3	4	5	6	7	8	9
<b>Total ROMÂNIA</b>	<b>8667</b>	<b>100,0</b>	<b>2240</b>	<b>6405</b>	<b>7</b>	<b>3</b>	<b>12</b>		<b>X</b>
ALBA	179	2,1	82	97					19
ARAD	190	2,2	40	150					14
ARGES	184	2,1	70	114					16
BACAU	191	2,2	69	122					13
BIHOR	372	4,3	235	136		1			2
BISTRITA-NASAUD	77	0,9	5	72					38
BOTOSANI	101	1,2	57	44					31
BRASOV	300	3,5	29	271					6
BRAILA	112	1,3	44	67			1		28
BUZAU	145	1,7	44	101					24
CARAS-SEVERIN	101	1,2	9	91	1				32
CALARASI	70	0,8	15	55					39
CLUJ	349	4,0	95	254					4
CONSTANTA	369	4,3	117	251			1		3
COVASNA	68	0,8	28	40					40
DAMBOVITA	113	1,3	50	62			1		27
DOLJ	227	2,6	45	181			1		10
GALATI	216	2,5	35	180			1		11
GIURGIU	66	0,8	30	36					41
GORJ	117	1,3	44	70			3		26
HARGHITA	174	2,0	84	90					22
HUNEDOARA	102	1,2	3	97			2		30
IALOMITA	82	0,9	29	52		1			36
IASI	331	3,8	98	229	4				5
MARAMURES	177	2,0	42	135					20
MEHEDINTI	79	0,9	39	40					37
MURES	176	2,0	26	149			1		21
NEAMT	187	2,2	41	145			1		15
OLT	101	1,2	27	74					33
PRAHOVA	267	3,1	96	171					8
SALAJ	121	1,4	50	71					25
SATU MARE	97	1,1	5	92					35
SIBIU	194	2,2	33	161					12
SUCEAVA	182	2,1	60	122					18
TELEORMAN	64	0,7	24	40					42
TIMIS	257	3,0	14	243					9
TULCEA	159	1,8	105	54					23
VASLUI	99	1,1	38	61					34
VALCEA	290	3,3	197	93					7
VRANCEA	110	1,3	11	99					29
MUN. BUCURESTI	1688	19,5	61	1627					1
ILFOV	183	2,1	14	166	2	1			17

\*) The total number of incorporations (col 1)

\*\*\* Less than 0,01%

Table no.9

**The number of incorporations in the Trade Register,  
by counties and category  
in April 2003**

County	Total		out of which:						RA	OC
			PF+AF	companies: 6417						
	SNC	SCS		SRL	SA	No.	No.			
	No.	%	No.	No.	No.			No.	No.	No.
0	1	2	3	4	5	6	7	8	9	
<b>Total ROMÂNIA</b>	<b>8667</b>	<b>100,0</b>	<b>2240</b>	<b>14</b>		<b>6315</b>	<b>88</b>	<b>3</b>	<b>7</b>	
ALBA	179	2,1	82			95	2			
ARAD	190	2,2	40			149	1			
ARGES	184	2,1	70			114				
BACAU	191	2,2	69	1		119	2			
BIHOR	372	4,3	235			136		1		
BISTRITA-NASAUD	77	0,9	5			62	10			
BOTOSANI	101	1,2	57			43	1			
BRASOV	300	3,5	29			266	5			
BRAILA	112	1,3	44			67	1			
BUZAU	145	1,7	44			101				
CARAS-SEVERIN	101	1,2	9			91			1	
CALARASI	70	0,8	15			54	1			
CLUJ	349	4,0	95	1		252	1			
CONSTANTA	369	4,3	117			248	4			
COVASNA	68	0,8	28			40				
DAMBOVITA	113	1,3	50	2		59	2			
DOLJ	227	2,6	45			177	5			
GALATI	216	2,5	35			178	3			
GIURGIU	66	0,8	30			36				
GORJ	117	1,3	44			69	4			
HARGHITA	174	2,0	84			90				
HUNEDOARA	102	1,2	3			97	2			
IALOMITA	82	0,9	29			51	1	1		
IASI	331	3,8	98			227	2		4	
MARAMURES	177	2,0	42			134	1			
MEHEDINTI	79	0,9	39			40				
MURES	176	2,0	26			146	4			
NEAMT	187	2,2	41			144	2			
OLT	101	1,2	27			73	1			
PRAHOVA	267	3,1	96	8		162	1			
SALAJ	121	1,4	50			70	1			
SATU MARE	97	1,1	5			91	1			
SIBIU	194	2,2	33			161				
SUCEAVA	182	2,1	60			121	1			
TELEORMAN	64	0,7	24			40				
TIMIS	257	3,0	14			241	2			
TULCEA	159	1,8	105			54				
VASLUI	99	1,1	38			60	1			
VALCEA	290	3,3	197			93				
VRANCEA	110	1,3	11			97	2			
MUN. BUCURESTI	1688	19,5	61	2		1606	19			
ILFOV	183	2,1	14			161	5	1	2	

Table no. 10

**The number of incorporations in the Trade Register, by field of activity\*  
and categories in April 2003**

CAEN segment	Field of activity	Total		out of which:						
				PF+AF	companies: 6417				RA	OC
					SNC	SCS	SRL	SA		
					No.	No.	No.	No.		
0	1	2	3	4	5	6	7	8	9	10
	<b>Total ROMÂNIA</b>	<b>8667</b>	<b>100,0</b>	<b>2240</b>	<b>14</b>		<b>6315</b>	<b>88</b>	<b>3</b>	<b>7</b>
1	Agriculture, hunting and related service activities	203	2,3	58			142	3		
2	Forestry, logging and related service activities	64	0,7	5			59			
5	Fishing, fish farming and related service activities	13	0,1	5			8			
10	Mining of coal and lignite; extraction of peat									
11	Extraction of crude petroleum and natural gas; service activities incidental to oil and gas extraction, excluding surveying	2	0,0					2		
12	Mining of uranium and thorium ores									
13	Mining of metal ores									
14	Other mining and quarrying	4	0,0				4			
15	Manufacture of food products and beverages	196	2,3	57			138			1
16	Manufacture of tobacco products	1	0,0				1			
17	Manufacture of textiles	24	0,3	6			18			
18	Manufacture of wearing apparel; dressing and dyeing of fur	80	0,9	12			68			
19	Tanning and dressing of leather; manufacture of luggage, handbags, saddlery, harness and footwear	25	0,3	5			20			
20	Manufacture of wood and of products of wood and cork, except furniture; manufacture of articles of straw and plaiting materials	144	1,7	38			106			
21	Manufacture of pulp, paper and paper products	9	0,1				8	1		
22	Publishing, printing and reproduction of recorded media	59	0,7	6	1		52			
23	Manufacture of coke, refined petroleum products and nuclear fuel									
24	Manufacture of chemicals and chemical products	13	0,1				13			
25	Manufacture of rubber and plastic products	21	0,2	1			20			
26	Manufacture of other non-metallic mineral products	67	0,8	32			35			
27	Manufacture of basic metals	5	0,1				5			
28	Manufacture of fabricated metal products, except machinery and equipment	95	1,1	17			67	11		
29	Manufacture of machinery and equipment n.e.c.	17	0,2	1			13	3		
30	Manufacture of office machinery and computers	2	0,0				2			
31	Manufacture of electrical machinery and apparatus n.e.c.	7	0,1				6	1		
32	Manufacture of radio, television and communication equipment and apparatus	3	0,0				3			
33	Manufacture of medical, precision and optical instruments, watches and clocks	28	0,3	9			19			
34	Manufacture of motor vehicles, trailers and semi- trailers	2	0,0				2			
35	Manufacture of other transport equipment	6	0,1				6			
36	Manufacture of furniture; manufacturing n.e.c.	97	1,1	20			76	1		
37	Recycling	26	0,3	1			25			
40	Electricity, gas, steam and hot water supply	12	0,1				5	7		
41	Collection, purification and distribution of water	5	0,1				3		2	
45	Construction	538	6,2	112			418	7		1

\*)Field of activity declared when registered, according to CAEN classification

Table no. 10  
(continuance)

The number of incorporations in the Trade Register, by field of activity\*  
and categories in April 2003

CAEN segment	Field of activity	Total		out of which:						
				PF+AF	companies: 6417				RA	OC
					SNC	SCS	SRL	SA		
					No.	No.	No.	No.		
0	1	2	3	4	5	6	7	8	9	10
	<b>Total ROMÂNIA</b>	<b>8667</b>	<b>100,0</b>	<b>2240</b>	<b>14</b>		<b>6315</b>	<b>88</b>	<b>3</b>	<b>7</b>
50	Sale, maintenance and repair of motor vehicles and motorcycles; retail sale of automotive fuel	247	2,8	42			205			
51	Wholesale trade and commission trade, except of motor vehicles and motorcycles	859	9,9	57			792	10		
52	Retail trade, except of motor vehicles and motorcycles; repair of personal and household goods	2213	25,5	778			1430			5
55	Hotels and restaurants	357	4,1	58			299			
60	Land transport; transport via pipelines	796	9,2	456	1		339			
61	Water transport	1	0,0				1			
62	Air transport	1	0,0				1			
63	Supporting and auxiliary transport activities; activities of travel agencies	45	0,5	4			39	2		
64	Post and telecommunications	73	0,8	1			71	1		
65	Financial intermediation, except insurance and pension funding	26	0,3	1			17	8		
66	Insurance and pension funding, except compulsory social security	18	0,2	13				5		
67	Activities auxiliary to financial intermediation	77	0,9	20	1		56			
70	Real estate activities	160	1,8	2			144	14		
71	Renting of machinery and equipment without operator and of personal and household goods	18	0,2	1			16	1		
72	Computer and related activities	220	2,5	21			199			
73	Research and development	15	0,2	5			9		1	
74	Other business activities	1191	13,7	219	10		955	7		
75	Public administration and defence; compulsory social security	3	0,0	2			1			
80	Education	56	0,6	41			15			
85	Health and social work	161	1,9	15			146			
90	Sewage and refuse disposal, sanitation and similar activities	6	0,1				4	2		
91	Activities of membership organizations n.e.c.	3	0,0	2			1			
92	Recreational, cultural and sporting activities	156	1,8	27	1		127	1		
93	Other service activities	196	2,3	89			107			
95	Activities of households as employers of domestic staff	1	0,0	1						
99	Extra-territorial organizations and bodies									

\*)Field of activity declared when registered, according to CAEN classification

Table no. 11

**Number of companies registered and the amount  
of subscribed capital, by county  
in April 2003**

County	Total registered companies		Subscribed capital		Average subscribed capital on company
	No.	%	mil. ROL	%	mil. ROL
0	1	2	3	4	5
<b>Total ROMÂNIA</b>	<b>6417</b>	<b>100,0</b>	<b>788069,6</b>	<b>100,0</b>	<b>123,5</b>
ALBA	97	1,5	324,2	0,0	3,4
ARAD	150	2,3	15119,2	1,9	100,8
ARGES	114	1,8	4342,0	0,6	38,4
BACAU	122	1,9	1604,5	0,2	13,4
BIHOR	136	2,1	24790,6	3,1	182,3
BISTRITA-NASAUD	72	1,1	6379,3	0,8	89,8
BOTOSANI	44	0,7	236,0	0,0	5,4
BRASOV	271	4,2	45310,0	5,7	169,7
BRAILA	68	1,1	46428,8	5,9	682,8
BUZAU	101	1,6	9487,2	1,2	93,9
CARAS-SEVERIN	91	1,4	3764,8	0,5	41,8
CALARASI	55	0,9	456,0	0,1	8,3
CLUJ	254	4,0	20605,7	2,6	81,4
CONSTANTA	252	3,9	8875,0	1,1	35,4
COVASNA	40	0,6	4097,2	0,5	102,4
DAMBOVITA	63	1,0	7312,8	0,9	117,9
DOLJ	182	2,8	70968,6	9,0	389,9
GALATI	181	2,8	28860,4	3,7	160,3
GIURGIU	36	0,6	312,0	0,0	8,7
GORJ	73	1,1	66545,0	8,4	937,3
HARGHITA	90	1,4	2462,0	0,3	27,4
HUNEDOARA	99	1,5	57595,3	7,3	587,7
IALOMITA	52	0,8	146,0	0,0	2,8
IASI	229	3,6	1024,1	0,1	4,5
MARAMURES	135	2,1	539,1	0,1	4,0
MEHEDINTI	40	0,6	107,9	0,0	2,7
MURES	150	2,3	30221,8	3,8	204,2
NEAMT	146	2,3	682,0	0,1	4,7
OLT	74	1,2	244,6	0,0	3,4
PRAHOVA	171	2,7	2042,6	0,3	12,0
SALAJ	71	1,1	2962,0	0,4	41,7
SATU MARE	92	1,4	1029,0	0,1	11,3
SIBIU	161	2,5	6231,9	0,8	38,7
SUCEAVA	122	1,9	34326,6	4,4	283,7
TELEORMAN	40	0,6	97,0	0,0	2,4
TIMIS	243	3,8	3008,2	0,4	12,4
TULCEA	54	0,8	377,1	0,0	7,0
VASLUI	61	1,0	7709,7	1,0	126,4
VALCEA	93	1,4	1142,1	0,1	12,3
VRANCEA	99	1,5	9566,4	1,2	96,6
MUN. BUCURESTI	1627	25,4	209038,7	26,5	129,0
ILFOV	166	2,6	51696,3	6,6	323,1

Note: The average does not include filials because according to the Law no.31/1990 they are not juridical persons

\*\*\* Less than 0,01%

Table no. 12

**Number of registered companies and the amount  
of subscribed capital by category,  
in April 2003**

Company type	Total registered companies		Subscribed capital		Average subscribed capital on company
	No.	%	mil. ROL	%	mil. ROL
0	1	2	3	4	5
<b>Total ROMÂNIA</b>	<b>6417</b>	<b>100,0</b>	<b>788069,6</b>	<b>100,0</b>	<b>123,5</b>
SNC	14	0,2	6,54	***	0,5
SCS					
SA	88	1,4	454587,97	57,7	7215,7
SRL	6315	98,4	333475,04	42,3	52,9
SCA					

*Note: The average does not include filials because according to the Law no.31/1990 they are not juridical persons*

\*\*\* Less than 0,01%

Diagram no.5

