



MINISTRY OF JUSTICE

THE NATIONAL TRADE REGISTER OFFICE

Bucharest, 2, Octavian Goga Blvd., Sector 3; Phone: 320.60.13; Fax: 320.50.29; Website: [www.onrr.ro](http://www.onrr.ro); E-mail: [onrr@onrr.ro](mailto:onrr@onrr.ro)

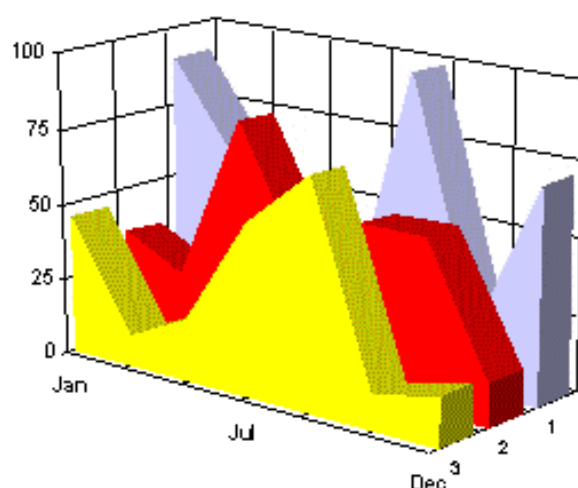
# PROCEEDINGS IN THE CENTRAL TRADE REGISTER

## STATISTICAL SYNTHESIS

OF

RECORDS IN THE CENTRAL TRADE REGISTER

- the 28<sup>th</sup> of February, 2003 - provisional data -



- ISSUE No. 135 -

## **MINISTRY OF JUSTICE THE NATIONAL TRADE REGISTER OFFICE**

---

- Operations of incorporation of companies, changes in statutory documents and strike-off of companies are based on Law No.26/1990 reissued, Law No.31/1990, reissued, OUG No.76/2001, reissued and Methodology Norms No. P/608/1998.
  
- This paper presents the trend in operations registered in The Trade Register Office attached to the law court of Bucharest and in the Trade Register Offices attached to the law court in each county of Romania.
  
- Information recorded in the Central Trade Register concern operations compulsory by law to be registered in the trade registers within the 42 trade register offices attached to the law courts.

*• No part of the content of this publication, in original or in any modified format, may be reproduced, stored in a retrieval system, or transmitted, in any form or by any means, without the prior permission in writing of The Ministry of Justice – The National Trade Register Office.*

*• The content of this publication may be referred to in articles, studies, books, as supporting or explanatory data under the condition only, the source of the information to be clearly and precisely specified.*

*Printed: April 2003*

# Contents

	Page
<b>1 Explanatory Note</b>	<b>1</b>
<b>2 General Overview</b>	<b>3</b>
Diagram no. 1 – Yearly percentage of new registered companies in the Trade Registry	3
Diagram no. 2 – Structure of incorporations by type of company during 1991 - February 2003	4
Diagram no. 3 – Structure of incorporations by type of companies in February 2003	5
Diagram no. 4 – Structure of invested capital during February 2003, by type of company	6
<b>3 Tables and statistical graphics</b>	<b>8</b>
<b>3.1 Data for December 1990 – February 2003</b>	<b>8</b>
Table no.1 – Operations registered in the Trade Register, by categories during the period of December 1990 – February 2003, in total by country and counties, rate of categories of operations in total operations country	8
Table no.1.a – Operations registered in the Trade Register, by categories during the period of December 1990 – February 2003, in total by country and counties, counties' rate in total country	9
Table no.2 – Status of reissuing the incorporation certificate by exchange of the registration certificate, the 28 of February 2003	10
Table no. 3 – Number and structure of incorporations in the Trade Register, by years, during the period of December 1990- February 2003	11
Table no.4 – The number of incorporations in the Trade Register, by counties and sources of capital, in the period December 1990 - February 2003	12
Table no. 5 – The number of incorporations in the Trade Register, by counties and categories, during the period of December 1990 – February 2003	13
Table no. 6 – The number of incorporations in the Trade Register, by field of activity and categories, during the period of December 1990 - February 2003	14

---

<b>3.2 Data for February 2003</b>	16
Table no. 7 – Operations carried on with the Trade Registers, by counties and categories, in February 2003	16
Table no. 8 – The number of incorporations in the Trade Register, by counties and sources of capital, in February 2003	17
	<b>Page</b>
Table no. 9 – The number of incorporations in the Trade Register, by counties and category in February 2003	18
Table no. 10 –The number of incorporations in the Trade Register, by field of activity and categories in February 2003	19
Table no. 11 – Number of companies registered and the amount of subscribed capital, by county in February 2003	21
Table no. 12– Number of registered companies and the amount of subscribed capital by category, in February 2003	22
Diagram no. 5 – Average subscribed capital on company in February 2003	22

## Explanatory Note

The Trade Register Office is set-up by Law No. 26/1990, reissued and modified by OUG No. 129/2002, became an active institution since December 1990 and is structured in two levels:

- the national level, represented by the National Trade Register Office organised under the Ministry of Justice
- the local level, represented by the 42 trade register offices attached to the law courts and co-ordinated by the National Trade Register Office

The categories of businessmen compulsory to register in the trade register are:

- natural persons tradesmen and family associations doing usually commercial acts, commercial companies, national companies, companies under state supervision, and co-operative organisations
- subsidiaries registered as commercial companies and legal persons following the legal proceedings of set-up, activity and incorporation according to the type of the legally set-up company.

### Usual Terms:

- incorporation – represents the registration of the company in the trade registry awarding the quality of legal person.

- other statutory documents – represent the official registration of the changes occurred in a company's life, such as: changes in headquarters' address, increase or decrease of the issued capital, merger, liquidation, strike-off, etc.

- strike-off – represents the removal of a company from the trade registry, due to dissolution and liquidation, being also the very moment the company loses its quality of legal person. Data also include the companies under the provisions of Law No. 314/2001.

- change of certificate – represents the obligation of companies set-up before OGU No. 76/2001 republished came in force, to request the incorporation certificate and fiscal registration certificate to be replaced with the new registration certificate containing the given unique registration code.

The ratio of these changes is being calculated as a proportion between the effective number of changes and the number of active companies due to operate the change.

- active company from the legal point of view – a company registered in the trade register and which is not affected by any of the situations leading to the temporary or permanently loss of this status (e.g. dissolution, liquidation, strike-off)

- operations represent all the records in the trade registry including incorporations, other statutory documents and strike-off of companies, irrespective of the object of activity, company's type and origin of the subscribed capital (local or foreign investment).

• **Terms used in tables and charts**

➤ **Number of companies:** represents, depending on the specific table, the number of companies incorporated in the related period, the number of companies being struck-off from the trade registry.

➤ **Amount of the subscribed capital:**

- **total, in local currency:** the amount of the subscribed capital resulted from totalising the amount subscribed (in cash and in kind) in local currency (ROL)

➤ **Regional development:**

*North-East:* Suceava, Botoşani, Neamţ, Iaşi, Bacău, Vaslui.

*South-East:* Vrancea, Galaţi, Buzău, Brăila, Tulcea, Constanţa.

*South-Muntenia:* Argeş, Dâmboviţa, Prahova, Teleorman, Giurgiu, Călăraşi, Ialomiţa.

*South-West Oltenia:* Gorj, Vâlcea, Dolj, Mehedinţi, Olt.

*West:* Arad, Caraş-Severin, Hunedoara, Timiş.

*North-West:* Bihor, Bistriţa, Cluj, Satu Mare, Sălaj, Maramureş.

*Center:* Alba, Braşov, Covasna, Harghita, Mureş, Sibiu.

*Bucharest-Ilfov:* Bucureşti, Ilfov.

CAEN code – The Classification of Activities in the National Economy was approved by HG No. 656/1997, modified by Order No 601 of the President of National Institute of Statistics being compatible with the international classification used in statistic reports and official documents. Activities are ranked upon homogeneity principle by sections, divisions, groups and clases.

Common abbreviations

- **PF** - Natural Persons Tradesman
- **AF** - Family association
- **SNC** - General Partnership
- **SCS** - Limited Partnership
- **SA** - Joint stock company
- **SRL** - Limited liability company
- **RA** - Company Under State Supervision
- **OC** - Co-operative organisation

Source:

The integrated IT system of the trade registry is designed by The National Trade Registry Office according to the provisions of the related legislation in force. The source of information is the computerised system of the trade registers handled by the Trade Register Offices attached to the law courts.

## GENERAL OVERVIEW

The statistical synthesis “Operations in the Central Trade Register” includes the results of operations recorded in the Central Trade Register until end of February 2003, upgraded on the basis of data forwarded by the Trade Register Offices in the counties.

Based on the provisional data, this paper shows the trend in the development of the business community in Romania, whatever the sector of activity, type of company and origin of the subscribed capital (local or foreign) is, as result of operations due to the legislation in force concerning the trade register, as:

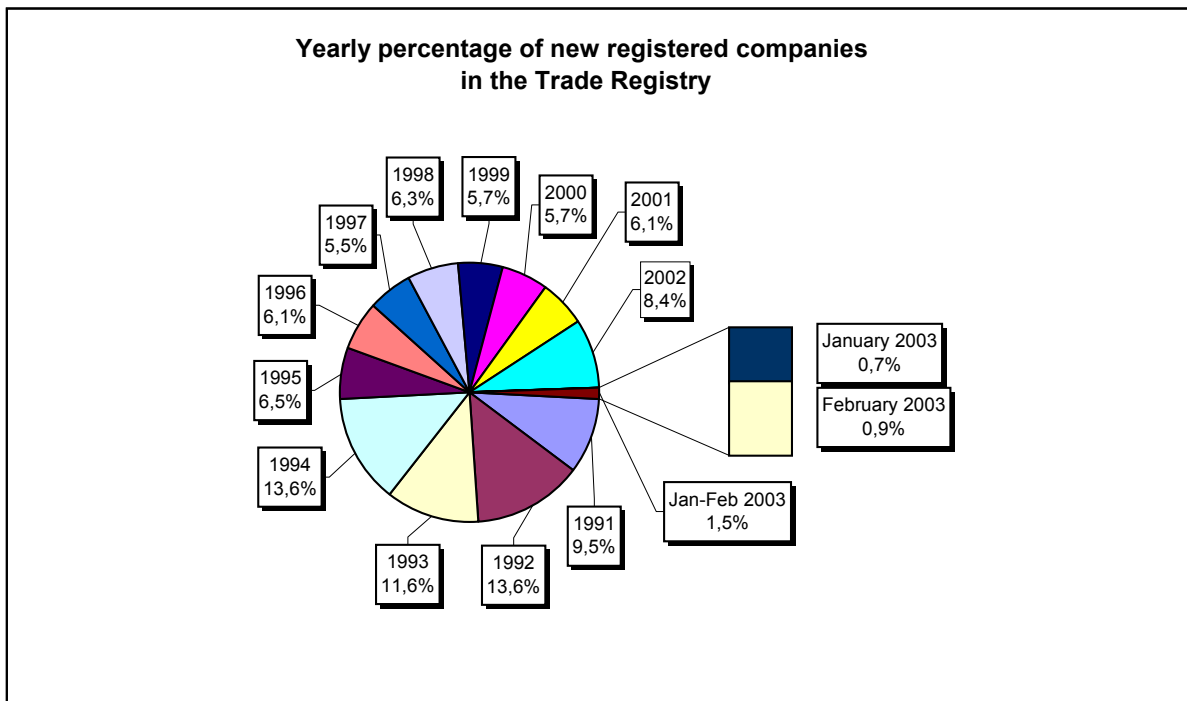
- incorporation of new companies;
- changes in statutory documents of existing companies;
- liquidation/dissolutions of companies;
- strike-off of companies;
- reissuing of registration certificates by replacement of old certificates

The present statistical synthesis does not reveal the operations concerning companies by foreign direct investment in particular, but these data are included in the general data presented hereby.

The following main aspects are highlighted through this paper:

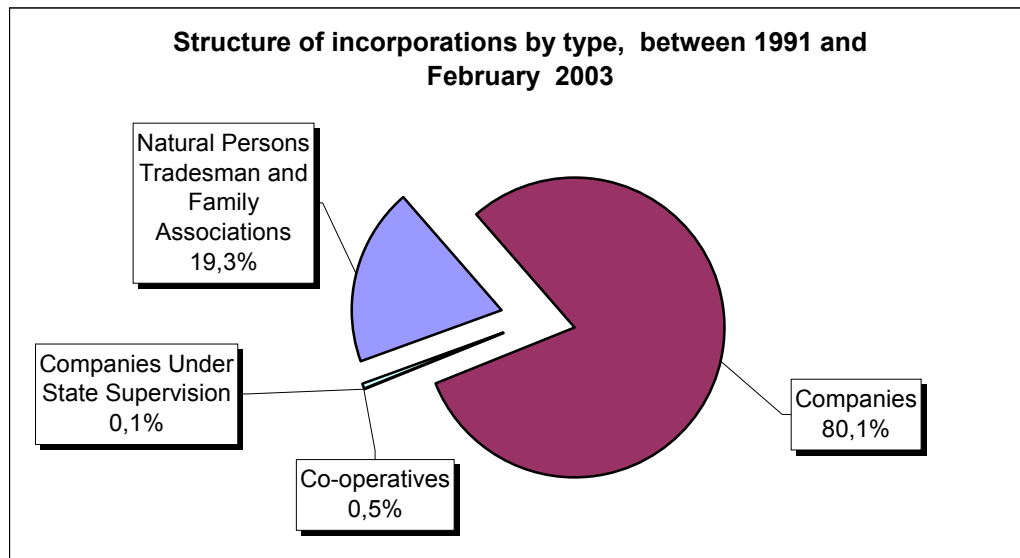
- In the period December 1990 - February 2003:
  - ✓ The total number of records in the trade registers was of 3,065,696, structured as follows: incorporations 33%, changes in statutory documents 61% and strike-off documents 6% (Table no. 1.a).
  - ✓ The structure by years of the number of incorporations in the trade registers, as it is showed in the diagram below, reveals the fact that around 55% of total incorporations were registered in the period of December 1990 – 1995 (Table nr 3).

**Diagram no.1**



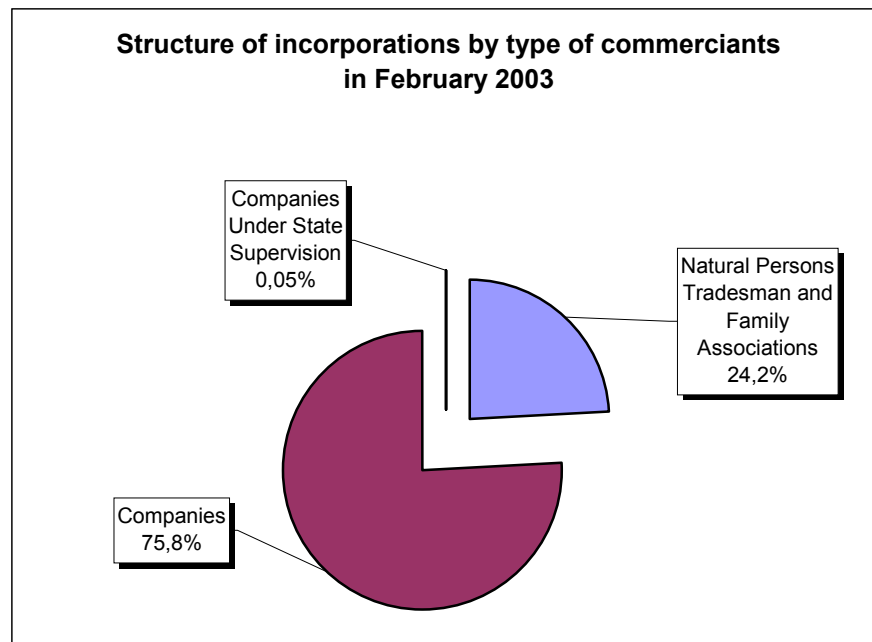
- ✓ In what concerns the origin of the issued capital, in the related period, from the total of 1,010,907 incorporations, 998,894 (98.81%) are companies registered by private capital, 3,525 (0.35%) by majority state capital and the rest of 8,488 (0.85%) by mixed capital (state + private).
- ✓ The structure by type of incorporations during the same period is the following: 194,817 natural persons tradesman and family associations, 809,540 companies, 1,256 companies under State supervision and 5,294 co-operative organisations (Table no. 5).

Diagram no. 2



- ✓ Between January - February 2003, 15,365 new companies were incorporated representing 1.52% of total incorporations in the period December 1990 - February 2003.
- In February 2003:
  - ✓ The total number of records is 30,867 of which 8,659 are incorporations (28.05%), 20,985 changes in statutory documents (67.99%) and 1,223 strike-off of companies (3.96%). The highest number of incorporations in February 2003 was registered in Bucharest Municipality, that is 1,836 incorporations of new companies (25.9% of total operations). The number of changes in statutory documents recorded in Bucharest Trade Register Office, in February 2003, was of 5,266 (74.1% of total operations) (Table no. 7).
  - ✓ The structure by type of incorporations in February is the following: 2,095 (24.2%) natural persons tradesman and family associations, 6,560 (75.8%) companies and 4 (0.05%) companies under State supervision (Table no. 9).

Diagram no. 3

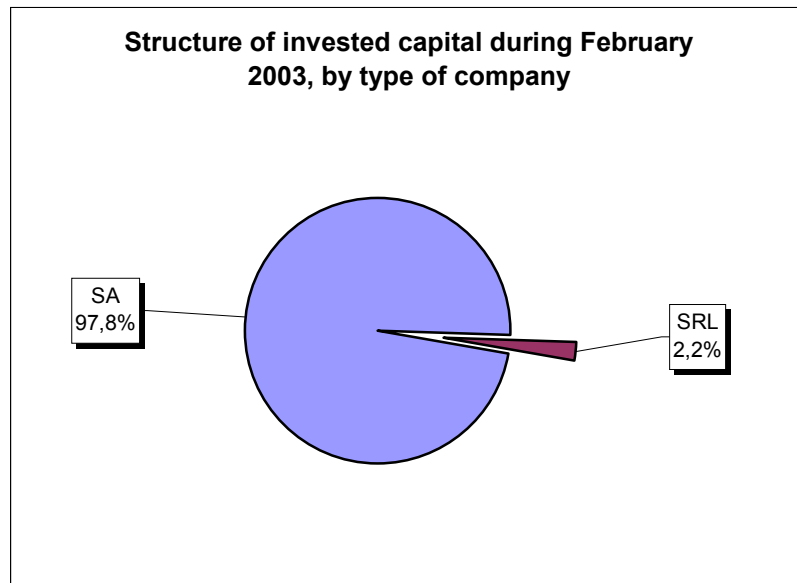


- ✓ In what concerns the origin of the issued capital, from the total of 8,659 incorporations, 8,462 are companies by private capital, 7 by state capital and 10 by mixed capital (state + private) (Table no. 8).
  
- ✓ With regard to the number of the incorporated companies and the amount of the subscribed capital, according to their legal status, 6,464 of the total number of incorporations are limited liability companies, totalising 141.4 billion ROL (2.2% of the total capital subscribed in companies) and 85 are joint-stock companies, with a total amount of 6,387 billion ROL in subscribed capital, representing 97.8% of the total capital subscribed in companies (Table no. 12).

The amount of the subscribed capital in the 6,560 new incorporated companies is of 6,528.3 billion ROL, that is an average of 999.6 million ROL per company.

The highest amount of the subscribed capital is registered in Bucharest Municipality reaching 6,131.6 billion ROL, and in Neamț county reaching 191.9 billion ROL. The average amount of the subscribed capital per company, in February, varies a lot from county to county, from 2.0 million ROL in Caraș Severin county to 3,583,7 million ROL in Bucharest Municipality (Table no. 11).

Diagram no. 4



Note: Other types of companies, up to total, represent less than 0,01%

- The weight of incorporations of companies in total operations with the trade registers reveals the trend in increasing the number of operations due to changes in statutory documents. So, if the number of incorporations was of 64% in total operations during 1994, in 2001 it was 17% only and 28.05% in February 2003.

The increasing dynamics of operations concerning changes in statutory documents, reflects at the same time:

- ✓ changes due to the companies' activity and related to shareholders, address of the registered office, and/or sector of activity, etc.
  - ✓ investment in capital of existing companies, sourcing from the registered profit included and from cession of shares or reducing of capital, etc.
  - ✓ the increasing number of records due to implementation of Law no. 64/1995 republished concerning the procedure of judiciary reorganisation and bankruptcy and of Law no. 314/2001 on regulating the status of some companies.
- The number of reissuing the incorporation certificates by replacement with the new registration certificates is significantly different from county to county. Up to 28 of February 2003, the highest rates in reissuing the certificates were registered in the following counties: Braşov 53.8%, Brăila 49.5%, Covasna 47,4% and Constanţa 46.7%. At country's level, the average rate of reissuing of certificates is of 36.5% (Table no. 2).

- The number of strike-off of companies during December 1990 – February 2003 is very different by county. The highest number of strike-off of companies registers the Bucharest Municipality (63,293 that is 31.4% of the total number of incorporations). The following next counties are Constanța (12,229 and 28.2%) and Timiș (8,327 and 25.4%).

The data and the particular aspects in this general overview reveals the significant dimension of the activity in the trade register offices, in order to insure the legality and order in functioning of all types of companies, compulsory by law to request incorporation with the trade register before starting any activity and to request as well to be registered any changes in statutory documents due to deeds and actions stipulated by law to be registered, during the lifetime of the company and in the end of activity.

**Ministry of Justice**  
**The National Trade Register Office**

**General Director NTRO,**  
**Alina Anca BALACIU**

Table no. 1

**Operations registered in the Trade Register, by categories  
during the period of December 1990 - February 2003, in total by country and counties,  
- rate of categories of operations in total operations/country -**

Counties	Total of registered operations		out of which :									
			Registered companies		Changes in statutory documents		out of which :				Strike off companies	
	of liquidation, dissolution						out of which :					
	No.	%	No.	%	No.	%	No.	%	No.	%	No.	%
0	1	2	3	4	5	6	7	8	9	10	11	12
<b>Total ROMÂNIA</b>	<b>3065696</b>	<b>100,0</b>	<b>1010907</b>	<b>100,0</b>	<b>1871431</b>	<b>100,0</b>	<b>183610</b>	100,0	<b>174706</b>	100,0	<b>183358</b>	100,0
ALBA	37562	1,2	14187	1,4	22830	1,2	3954	2,2	3596	2,1	545	0,3
ARAD	67912	2,2	22782	2,3	40967	2,2	3293	1,8	2974	1,7	4163	2,3
ARGES	66195	2,2	25351	2,5	39941	2,1	4150	2,3	4120	2,4	903	0,5
BACAU	58893	1,9	26546	2,6	31057	1,7	6280	3,4	5278	3,0	1290	0,7
BIHOR	82423	2,7	29011	2,9	52191	2,8	4803	2,6	4599	2,6	1221	0,7
BISTRITA-NASAUD	34646	1,1	12529	1,2	20137	1,1	1410	0,8	1120	0,6	1980	1,1
BOTOSANI	26999	0,9	11608	1,1	13771	0,7	1639	0,9	1563	0,9	1620	0,9
BRASOV	104551	3,4	31360	3,1	67442	3,6	5018	2,7	4893	2,8	5749	3,1
BRAILA	44514	1,5	13950	1,4	30158	1,6	4602	2,5	4509	2,6	406	0,2
BUZAU	58293	1,9	18916	1,9	36349	1,9	2250	1,2	2109	1,2	3028	1,7
CARAS-SEVERIN	36532	1,2	12921	1,3	20800	1,1	1941	1,1	1922	1,1	2811	1,5
CALARASI	28124	0,9	11038	1,1	15302	0,8	65	0,0			1784	1,0
CLUJ	107100	3,5	42905	4,2	62441	3,3	8264	4,5	8113	4,6	1754	1,0
CONSTANTA	132105	4,3	43301	4,3	76575	4,1	11465	6,2	10621	6,1	12229	6,7
COVASNA	27319	0,9	8632	0,9	17159	0,9	1182	0,6	1175	0,7	1528	0,8
DAMBOVITA	48987	1,6	20304	2,0	24082	1,3	3029	1,6	2952	1,7	4601	2,5
DOLJ	75259	2,5	26815	2,7	41804	2,2	5779	3,1	5543	3,2	6640	3,6
GALATI	88532	2,9	25028	2,5	56940	3,0	5415	2,9	5344	3,1	6564	3,6
GIURGIU	20662	0,7	8294	0,8	10038	0,5	33	0,0			2330	1,3
GORJ	40410	1,3	12477	1,2	24809	1,3	2717	1,5	2667	1,5	3124	1,7
HARGHITA	31148	1,0	11676	1,2	19061	1,0	68	0,0			411	0,2
HUNEDOARA	53845	1,8	21363	2,1	28905	1,5	3050	1,7	2944	1,7	3577	2,0
IALOMITA	30934	1,0	10362	1,0	18413	1,0	1672	0,9	1587	0,9	2159	1,2
IASI	104804	3,4	29859	3,0	70939	3,8	3715	2,0	3225	1,8	4006	2,2
MARAMURES	67819	2,2	27940	2,8	38675	2,1	3092	1,7	2924	1,7	1204	0,7
MEHEDINTI	33130	1,1	12460	1,2	17086	0,9	3138	1,7	3085	1,8	3584	2,0
MURES	63054	2,1	25492	2,5	36721	2,0	3053	1,7	2944	1,7	841	0,5
NEAMT	54132	1,8	21691	2,1	28975	1,5	2742	1,5	2435	1,4	3466	1,9
OLT	40947	1,3	15726	1,6	22255	1,2	2092	1,1	2033	1,2	2966	1,6
PRAHOVA	114670	3,7	32734	3,2	75771	4,0	4190	2,3	3934	2,3	6165	3,4
SALAJ	19202	0,6	7873	0,8	10330	0,6	716	0,4	683	0,4	999	0,5
SATU MARE	46280	1,5	16538	1,6	27117	1,4	2929	1,6	2918	1,7	2625	1,4
SIBIU	70096	2,3	17695	1,8	49276	2,6	2595	1,4	2583	1,5	3125	1,7
SUCEAVA	70804	2,3	27947	2,8	39304	2,1	2418	1,3	2387	1,4	3553	1,9
TELEORMAN	37647	1,2	12295	1,2	24923	1,3	1543	0,8	1506	0,9	429	0,2
TIMIS	131105	4,3	32722	3,2	90056	4,8	7530	4,1	7273	4,2	8327	4,5
TULCEA	31584	1,0	11410	1,1	18561	1,0	1182	0,6	1003	0,6	1613	0,9
VASLUI	34499	1,1	12841	1,3	20174	1,1	1507	0,8	1386	0,8	1484	0,8
VALCEA	49067	1,6	16564	1,6	29923	1,6	2043	1,1	1888	1,1	2580	1,4
VRANCEA	33925	1,1	12259	1,2	21063	1,1	1662	0,9	1585	0,9	603	0,3
MUN. BUCURESTI	731823	23,9	201872	20,0	466658	24,9	53500	29,1	51406	29,4	63293	34,5
ILFOV	28163	0,9	13633	1,3	12452	0,7	1884	1,0	1879	1,1	2078	1,1

\*) according to the effect of Law No. 314/2001, art.1 și art. 6

\*\*\* Less than 0,01%

Table no. 1.a

**Operations registered in the Trade Register, by categories  
during the period of December 1990 - February 2003, in total by country and counties,  
- counties' rate in total country -**

Counties	Total of registered operations		out of which :									
			Registered companies		Changes in statutory documents		out of which :				Strike off companies	
	of liquidation, dissolution						out of which :					
	No.	%	No.	%	No.	%	No.	%	No.	%	No.	%
0	1	2	3	4	5	6	7	8	9	10	11	12
<b>Total ROMÂNIA</b>	<b>3065696</b>	<b>100,0</b>	<b>1010907</b>	<b>33,0</b>	<b>1871431</b>	<b>61,0</b>	<b>183610</b>	<b>6,0</b>	<b>174706</b>	<b>5,7</b>	<b>183358</b>	<b>6,0</b>
ALBA	37562	100,0	14187	37,8	22830	60,8	3954	10,5	3596	9,6	545	1,5
ARAD	67912	100,0	22782	33,5	40967	60,3	3293	4,8	2974	4,4	4163	6,1
ARGES	66195	100,0	25351	38,3	39941	60,3	4150	6,3	4120	6,2	903	1,4
BACAU	58893	100,0	26546	45,1	31057	52,7	6280	10,7	5278	9,0	1290	2,2
BIHOR	82423	100,0	29011	35,2	52191	63,3	4803	5,8	4599	5,6	1221	1,5
BISTRITA-NASAUD	34646	100,0	12529	36,2	20137	58,1	1410	4,1	1120	3,2	1980	5,7
BOTOSANI	26999	100,0	11608	43,0	13771	51,0	1639	6,1	1563	5,8	1620	6,0
BRASOV	104551	100,0	31360	30,0	67442	64,5	5018	4,8	4893	4,7	5749	5,5
BRAILA	44514	100,0	13950	31,3	30158	67,7	4602	10,3	4509	10,1	406	0,9
BUZAU	58293	100,0	18916	32,4	36349	62,4	2250	3,9	2109	3,6	3028	5,2
CARAS-SEVERIN	36532	100,0	12921	35,4	20800	56,9	1941	5,3	1922	5,3	2811	7,7
CALARASI	28124	100,0	11038	39,2	15302	54,4	65	0,2			1784	6,3
CLUJ	107100	100,0	42905	40,1	62441	58,3	8264	7,7	8113	7,6	1754	1,6
CONSTANTA	132105	100,0	43301	32,8	76575	58,0	11465	8,7	10621	8,0	12229	9,3
COVASNA	27319	100,0	8632	31,6	17159	62,8	1182	4,3	1175	4,3	1528	5,6
DAMBOVITA	48987	100,0	20304	41,4	24082	49,2	3029	6,2	2952	6,0	4601	9,4
DOLJ	75259	100,0	26815	35,6	41804	55,5	5779	7,7	5543	7,4	6640	8,8
GALATI	88532	100,0	25028	28,3	56940	64,3	5415	6,1	5344	6,0	6564	7,4
GIURGIU	20662	100,0	8294	40,1	10038	48,6	33	0,2			2330	11,3
GORJ	40410	100,0	12477	30,9	24809	61,4	2717	6,7	2667	6,6	3124	7,7
HARGHITA	31148	100,0	11676	37,5	19061	61,2	68	0,2			411	1,3
HUNEDOARA	53845	100,0	21363	39,7	28905	53,7	3050	5,7	2944	5,5	3577	6,6
IALOMITA	30934	100,0	10362	33,5	18413	59,5	1672	5,4	1587	5,1	2159	7,0
IASI	104804	100,0	29859	28,5	70939	67,7	3715	3,5	3225	3,1	4006	3,8
MARAMURES	67819	100,0	27940	41,2	38675	57,0	3092	4,6	2924	4,3	1204	1,8
MEHEDINTI	33130	100,0	12460	37,6	17086	51,6	3138	9,5	3085	9,3	3584	10,8
MURES	63054	100,0	25492	40,4	36721	58,2	3053	4,8	2944	4,7	841	1,3
NEAMT	54132	100,0	21691	40,1	28975	53,5	2742	5,1	2435	4,5	3466	6,4
OLT	40947	100,0	15726	38,4	22255	54,4	2092	5,1	2033	5,0	2966	7,2
PRAHOVA	114670	100,0	32734	28,5	75771	66,1	4190	3,7	3934	3,4	6165	5,4
SALAJ	19202	100,0	7873	41,0	10330	53,8	716	3,7	683	3,6	999	5,2
SATU MARE	46280	100,0	16538	35,7	27117	58,6	2929	6,3	2918	6,3	2625	5,7
SIBIU	70096	100,0	17695	25,2	49276	70,3	2595	3,7	2583	3,7	3125	4,5
SUCEAVA	70804	100,0	27947	39,5	39304	55,5	2418	3,4	2387	3,4	3553	5,0
TELEORMAN	37647	100,0	12295	32,7	24923	66,2	1543	4,1	1506	4,0	429	1,1
TIMIS	131105	100,0	32722	25,0	90056	68,7	7530	5,7	7273	5,5	8327	6,4
TULCEA	31584	100,0	11410	36,1	18561	58,8	1182	3,7	1003	3,2	1613	5,1
VASLUI	34499	100,0	12841	37,2	20174	58,5	1507	4,4	1386	4,0	1484	4,3
VALCEA	49067	100,0	16564	33,8	29923	61,0	2043	4,2	1888	3,8	2580	5,3
VRANCEA	33925	100,0	12259	36,1	21063	62,1	1662	4,9	1585	4,7	603	1,8
MUN. BUCURESTI	731823	100,0	201872	27,6	466658	63,8	53500	7,3	51406	7,0	63293	8,6
ILFOV	28163	100,0	13633	48,4	12452	44,2	1884	6,7	1879	6,7	2078	7,4

\*) according to the effect of Law No. 314/2001, art.1 și art. 6

\*\*\* Less than 0,01%

Table no. 2

**Status of reissuing the incorporation certificate by exchange of the  
registration certificate, the 28 of February 2003**

County	Companies having to request exchange of certificate		Companies having done the exchange of certificate		Exchange rate (3/1)
	Number	%	Number	%	%
0	1	2	3	4	5
<b>Total of ROMÂNIA</b>	<b>650949</b>	<b>100,0</b>	<b>237519</b>	<b>100,0</b>	<b>36,5</b>
ALBA	9208	1,4	3270	1,4	35,5
ARAD	15433	2,4	4015	1,7	26,0
ARGES	17483	2,7	7017	3,0	40,1
BACAU	19179	2,9	5396	2,3	28,1
BIHOR	18809	2,9	6504	2,7	34,6
BISTRITA-NASAUD	9110	1,4	3076	1,3	33,8
BOTOSANI	8456	1,3	2650	1,1	31,3
BRASOV	17316	2,7	9317	3,9	53,8
BRAILA	8859	1,4	4384	1,8	49,5
BUZAU	13185	2,0	4690	2,0	35,6
CARAS-SEVERIN	8086	1,2	2841	1,2	35,1
CALARASI	7945	1,2	1909	0,8	24,0
CLUJ	21444	3,3	9984	4,2	46,6
CONSTANTA	23180	3,6	10829	4,6	46,7
COVASNA	6400	1,0	3036	1,3	47,4
DAMBOVITA	13437	2,1	4045	1,7	30,1
DOLJ	17009	2,6	5801	2,4	34,1
GALATI	14964	2,3	6068	2,6	40,6
GIURGIU	4723	0,7	1585	0,7	33,6
GORJ	7532	1,2	2344	1,0	31,1
HARGHITA	8019	1,2	2533	1,1	31,6
HUNEDOARA	15399	2,4	4515	1,9	29,3
IALOMITA	6790	1,0	2281	1,0	33,6
IASI	22355	3,4	7905	3,3	35,4
MARAMURES	21561	3,3	7290	3,1	33,8
MEHEDINTI	7769	1,2	2087	0,9	26,9
MURES	18244	2,8	6127	2,6	33,6
NEAMT	15292	2,3	4605	1,9	30,1
OLT	11169	1,7	3866	1,6	34,6
PRAHOVA	21987	3,4	8136	3,4	37,0
SALAJ	5430	0,8	1984	0,8	36,5
SATU MARE	11137	1,7	3248	1,4	29,2
SIBIU	12203	1,9	5565	2,3	45,6
SUCEAVA	21177	3,3	5508	2,3	26,0
TELEORMAN	9105	1,4	3200	1,3	35,1
TIMIS	20080	3,1	7833	3,3	39,0
TULCEA	8177	1,3	2419	1,0	29,6
VASLUI	9450	1,5	2975	1,3	31,5
VALCEA	10916	1,7	4689	2,0	43,0
VRANCEA	7328	1,1	2517	1,1	34,3
MUN. BUCURESTI	118047	18,1	46731	19,7	39,6
ILFOV	7556	1,2	2744	1,2	36,3

Note: Figures in column 1 are being issued in accordance with the methodological note.

\*\*\* Sub 0,01%

Table no.3

**Number and structure of incorporations in the Trade Register, by years,  
during the period of December 1990 - February 2003**

Period (year, month)	Registered companies	Percentage	
	No.	%	%
0	1	2	3
<b>Total, 28 February 2002, out of which</b>	<b>1010907</b>	<b>100,00</b>	
Year 1990	81	0,01	
Year 1991	95840	9,48	
Year 1992	137456	13,60	
Year 1993	117078	11,58	
Year 1994	137445	13,60	
Year 1995	65479	6,48	
Year 1996	62089	6,14	
Year 1997	55663	5,51	
Year 1998	63878	6,32	
Year 1999	57197	5,66	
Year 2000	57291	5,67	
Year 2001	61265	6,06	
Year 2002	84780	8,39	
<b>Year 2003 (1.I - 31.XII), out of which :</b>	<b>15365</b>	<b>1,52</b>	<b>100,0</b>
January	6706		43,6
February	8659		56,4

Note: Column 2 reveals the annual structure of incorporations; column 3 reveals the structure by months during the current year.

\*\*\* Less than 0,01%

Table no. 4

**The number of incorporations in the Trade Register, by counties and sources of capital, in the period December 1990 - February 2003**

Counties	Total		out of which:					Ranking by: *	
			Private capital			State majority capital			Mixed capital (state+private)
			out of which:			out of which:			
			PF+AF	Companies	OC	RA	Companies		Companies
No.	%	No.	No.	No.	No.	No.	No.		
0	1	2	3	4	5	6	7	8	9
<b>Total ROMÂNIA</b>	<b>1010907</b>	<b>100,0</b>	<b>194817</b>	<b>798783</b>	<b>5294</b>	<b>1256</b>	<b>2269</b>	<b>8488</b>	<b>X</b>
ALBA	14187	1,4	3313	10494	141	31	38	170	25
ARAD	22783	2,3	7734	14496	155	26	40	332	16
ARGES	25351	2,5	6606	18369	168	28	29	151	14
BACAU	26546	2,6	8371	17721	158	32	41	223	12
BIHOR	29011	2,9	2370	26099	144	30	62	306	8
BISTRITA-NASAUD	12529	1,2	4014	8261	98	18	29	109	30
BOTOSANI	11608	1,1	3827	7350	121	21	170	119	36
BRASOV	31360	3,1	4510	26457	114	36	79	164	6
BRAILA	13950	1,4	1895	11727	95	26	42	165	26
BUZAU	18916	1,9	3656	14921	142	25	42	130	20
CARAS-SEVERIN	12921	1,3	4482	8105	101	33	65	135	28
CALARASI	11038	1,1	2681	8087	86	16	75	93	38
CLUJ	42905	4,2	6609	35797	150	48	40	261	3
CONSTANTA	43301	4,3	4825	37648	202	48	44	534	2
COVASNA	8632	0,9	1964	6437	67	23	32	109	40
DAMBOVITA	20304	2,0	9408	10509	134	28	74	151	19
DOLJ	26815	2,7	2814	23547	161	39	53	201	11
GALATI	25028	2,5	3335	21338	134	28	50	143	15
GIURGIU	8294	0,8	985	6991	80	20	108	110	41
GORJ	12477	1,2	1565	10502	184	50	76	100	31
HARGHITA	11676	1,2	2023	9287	85	23	30	228	35
HUNEDOARA	21363	2,1	4882	15995	81	37	88	280	18
IALOMITA	10362	1,0	3614	6526	73	14	46	89	39
IASI	29859	3,0	6685	22604	127	32	68	343	7
MARAMURES	27940	2,8	11544	16083	119	34	39	121	10
MEHEDINTI	12460	1,2	2835	9401	82	18	26	98	32
MURES	25492	2,5	8794	16317	154	28	32	167	13
NEAMT	21691	2,1	6562	14755	153	28	28	165	17
OLT	15726	1,6	5860	9495	161	26	61	123	24
PRAHOVA	32734	3,2	7244	24942	177	48	62	261	4
SALAJ	7873	0,8	2070	5590	107	18	27	61	42
SATU MARE	16538	1,6	4020	12238	88	18	40	134	23
SIBIU	17695	1,8	2187	15102	115	26	108	157	21
SUCEAVA	27947	2,8	12939	14499	201	28	61	219	9
TELEORMAN	12295	1,2	3488	8421	151	21	37	177	33
TIMIS	32722	3,2	2209	29925	140	36	68	344	5
TULCEA	11410	1,1	2987	8085	66	18	42	212	37
VASLUI	12841	1,3	5828	6712	109	16	41	135	29
VALCEA	16564	1,6	5308	10900	168	39	37	112	22
VRANCEA	12259	1,2	2483	9517	103	16	27	113	34
MUN. BUCURESTI	201871	20,0	5028	195398	138	107	100	1100	1
ILFOV	13633	1,3	1263	12135	61	19	12	143	27

\*) The total number of incorporations (col 1)

\*\*\* Less than 0,01%

Table no. 5

**The number of incorporations in the Trade Register,  
by counties and categories, during the period of  
December 1990 - February 2003**

County	Total		out of which:						RA	OC
			PF+AF	companies: 809540						
	SNC	SCS		SRL	SA	No.	No.			
	No.	%	No.	No.	No.			No.	No.	No.
0	1	2	3	4	5	6	7	8	9	
<b>Total ROMÂNIA</b>	<b>1010907</b>	<b>100,0</b>	<b>194817</b>	<b>32518</b>	<b>1524</b>	<b>746861</b>	<b>28632</b>	<b>1256</b>	<b>5294</b>	
ALBA	14187	1,4	3313	888	11	9290	513	31	141	
ARAD	22782	2,3	7734	48	5	14197	616	26	155	
ARGES	25351	2,5	6606	107	13	17689	740	28	168	
BACAU	26546	2,6	8371	1298	4	16030	652	32	158	
BIHOR	29011	2,9	2370	125	47	25454	841	30	144	
BISTRITA-NASAUD	12529	1,2	4014	146	20	7866	367	18	98	
BOTOSANI	11608	1,1	3827	468	1	6749	421	21	121	
BRASOV	31360	3,1	4510	239	19	25730	712	36	114	
BRAILA	13950	1,4	1895	376	12	11069	477	26	95	
BUZAU	18916	1,9	3656	3745	46	10784	518	25	142	
CARAS-SEVERIN	12921	1,3	4482	113	6	7751	435	33	101	
CALARASI	11038	1,1	2681	609	3	7318	325	16	86	
CLUJ	42905	4,2	6609	2104	18	32915	1061	48	150	
CONSTANTA	43301	4,3	4825	311	23	36560	1332	48	202	
COVASNA	8632	0,9	1964	145	3	6155	275	23	67	
DAMBOVITA	20304	2,0	9408	57	8	10232	437	28	134	
DOLJ	26815	2,7	2814	1557	8	21459	777	39	161	
GALATI	25028	2,5	3335	1573	6	19220	732	28	134	
GIURGIU	8294	0,8	985	35	8	6861	305	20	80	
GORJ	12477	1,2	1565	28	1	10220	429	50	184	
HARGHITA	11676	1,2	2023	62	6	9025	452	23	85	
HUNEDOARA	21363	2,1	4882	1165	98	14510	590	37	81	
IALOMITA	10362	1,0	3614	266	11	6072	312	14	73	
IASI	29859	3,0	6685	505	111	21494	903	32	127	
MARAMURES	27940	2,8	11544	1924	23	13761	535	34	119	
MEHEDINTI	12460	1,2	2835	427	3	8803	292	18	82	
MURES	25492	2,5	8794	37	34	15847	598	28	154	
NEAMT	21691	2,1	6562	3292	30	11013	613	28	153	
OLT	15726	1,6	5860	1611	1	7609	458	26	161	
PRAHOVA	32734	3,2	7244	3103	12	21365	785	48	177	
SALAJ	7873	0,8	2070	600	4	4809	265	18	107	
SATU MARE	16538	1,6	4020	282	4	11696	430	18	88	
SIBIU	17695	1,8	2187	770	43	13969	585	26	115	
SUCEAVA	27947	2,8	12939	438	8	13803	530	28	201	
TELEORMAN	12295	1,2	3488	271	398	7577	389	21	151	
TIMIS	32722	3,2	2209	573	22	28609	1133	36	140	
TULCEA	11410	1,1	2987	1360	112	6414	453	18	66	
VASLUI	12841	1,3	5828	90	11	6407	380	16	109	
VALCEA	16564	1,6	5308	361	5	10259	424	39	168	
VRANCEA	12259	1,2	2483	355	9	8873	420	16	103	
MUN. BUCURESTI	201872	20,0	5028	1009	291	189627	5671	107	138	
ILFOV	13633	1,3	1263	45	26	11770	449	19	61	

Table no. 6

**The number of incorporations in the Trade Register, by field of activity\*  
and categories, during the period of  
December 1990 - February 2003**

CAEN segment	Field of activity	Total		out of which:						
				PF+AF	companies: 809540				RA	OC
					SNC	SCS	SRL	SA		
					No.	No.	No.	No.		
0	1	2	3	4	5	6	7	8	9	10
	<b>Total ROMÂNIA</b>	<b>1010907</b>	<b>100,0</b>	<b>194817</b>	<b>32518</b>	<b>1524</b>	<b>746861</b>	<b>28632</b>	<b>1256</b>	<b>5294</b>
1	Agriculture, hunting and related service activities	42167	4,2	3522	2023	43	32728	3697	37	117
2	Forestry, logging and related service activities	5367	0,5	588	152	3	4356	214	46	8
5	Fishing, fish farming and related service activities	1127	0,1	374	17	3	681	52		
10	Mining of coal and lignite; extraction of peat	62	0,0	1			45	12	4	
11	Extraction of crude petroleum and natural gas; service activities incidental to oil and gas extraction, excluding surveying	252	0,0	2	1		99	104	46	
12	Mining of uranium and thorium ores	133	0,0	32			95	6		
13	Mining of metal ores	506	0,1	162			283	53	8	
14	Other mining and quarrying	1005	0,1	83	9	1	760	149	2	1
15	Manufacture of food products and beverages	61892	6,1	8213	3260	149	48248	1770	5	247
16	Manufacture of tobacco products	271	0,0	47			193	30	1	
17	Manufacture of textiles	9772	1,0	1641	556	16	7020	395		144
18	Manufacture of wearing apparel; dressing and dyeing of fur	15979	1,6	2862	874	37	11563	339	1	303
19	Tanning and dressing of leather; manufacture of luggage, handbags, saddlery, harness and footwear	3989	0,4	550	112	6	3152	117	1	51
20	Manufacture of wood and of products of wood and cork, except furniture; manufacture of articles of straw and plaiting materials	15257	1,5	3264	573	28	10877	464	9	42
21	Manufacture of pulp, paper and paper products	1272	0,1	61	21	1	1085	91		13
22	Publishing, printing and reproduction of recorded media	8525	0,8	561	316	21	7230	374	13	10
23	Manufacture of coke, refined petroleum products and nuclear fuel	217	0,0	21			163	31	2	
24	Manufacture of chemicals and chemical products	3174	0,3	86	89	1	2624	362	6	6
25	Manufacture of rubber and plastic products	4483	0,4	393	313	7	3496	249		24
26	Manufacture of other non-metallic mineral products	5019	0,5	743	212	6	3687	353	5	13
27	Manufacture of basic metals	2171	0,2	137	39	3	1786	196	3	7
28	Manufacture of fabricated metal products, except machinery and equipment	9826	1,0	1116	361	22	7593	661	11	62
29	Manufacture of machinery and equipment n.e.c.	2945	0,3	46	44	7	2435	389	19	5
30	Manufacture of office machinery and computers	1538	0,2	11	25	3	1419	80		
31	Manufacture of electrical machinery and apparatus n.e.c.	1499	0,1	78	44	4	1231	136		6
32	Manufacture of radio, television and communication equipment and apparatus	678	0,1	18	14	3	573	69		1
33	Manufacture of medical, precision and optical instruments, watches and clocks	1419	0,1	181	16	2	1130	86		4
34	Manufacture of motor vehicles, trailers and semi-trailers	713	0,1	17	31	3	545	115		2
35	Manufacture of other transport equipment	1343	0,1	166	86	7	895	114	73	2
36	Manufacture of furniture; manufacturing n.e.c.	9629	1,0	1991	284	15	6867	310	5	157
37	Recycling	3114	0,3	273	51	5	2622	162		1
40	Electricity, gas, steam and hot water supply	2607	0,3	826	3	1	1247	442	88	
41	Collection, purification and distribution of water	3415	0,3	1602	2		1593	152	66	
45	Construction	40168	4,0	6252	608	40	30970	2170	53	75

\*)Field of activity declared when registered, according to CAEN classification

**Table no. 6**  
(continuing)

**The number of incorporations in the Trade Register, by field of activity\*  
and categories, during the period of  
December 1990 - February 2003**

CAEN segment	Field of activity	Total		out of which:						
				PF+AF	companies: 809540				RA	OC
					SNC	SCS	SRL	SA		
0	1	No.	%	No.	No.	No.	No.	No.	No.	
	<b>Total ROMÂNIA</b>	<b>1010907</b>	<b>100,0</b>	<b>194817</b>	<b>32518</b>	<b>1524</b>	<b>746861</b>	<b>28632</b>	<b>1256</b>	<b>5294</b>
50	Sale, maintenance and repair of motor vehicles and motorcycles; retail sale of automotive fuel	39245	3,9	3493	1242	34	33428	1001	5	42
51	Wholesale trade and commission trade, except of motor vehicles and motorcycles	153154	15,2	9428	4523	146	135698	3043	35	281
52	Retail trade, except of motor vehicles and motorcycles; repair of personal and household goods	368223	36,4	112553	11899	553	238482	2427	5	2303
55	Hotels and restaurants	38571	3,8	8742	1633	126	27240	662	73	95
60	Land transport; transport via pipelines	35879	3,5	8634	841	35	25329	997	33	10
61	Water transport	693	0,1	114	82	8	358	60	70	1
62	Air transport	248	0,0	17			182	39	10	
63	Supporting and auxiliary transport activities; activities of travel agencies	6430	0,6	287	220	14	5401	405	93	10
64	Post and telecommunications	3030	0,3	110	11	1	2633	261	11	3
65	Financial intermediation, except insurance and pension funding	4183	0,4	118	15		1304	1717	2	1027
66	Insurance and pension funding, except compulsory social security	1700	0,2	459	1		479	760		1
67	Activities auxiliary to financial intermediation	2798	0,3	312	5	2	2221	250		8
70	Real estate activities	6570	0,6	251	28	6	5907	355	17	6
71	Renting of machinery and equipment without operator and of personal and household goods	1785	0,2	276	116	8	1230	84	70	1
72	Computer and related activities	9656	1,0	732	110	12	8462	335	2	3
73	Research and development	1153	0,1	121	11	2	826	150	41	2
74	Other business activities	40691	4,0	5473	714	61	32907	1371	106	58
75	Public administration and defence; compulsory social security	294	0,0	53	5		196	23	16	1
80	Education	3086	0,3	1189	62	5	1769	61		
85	Health and social work	9829	1,0	1539	232	15	7972	67	3	1
90	Sewage and refuse disposal, sanitation and similar activities	437	0,0	29	13	2	293	81	18	
91	Activities of membership organizations n.e.c.	138	0,0	38	1		83	13		3
92	Recreational, cultural and sporting activities	7549	0,7	1024	195	14	6022	216	66	12
93	Other service activities	13641	1,3	3765	417	42	8911	305	76	124
95	Activities of households as employers of domestic staff	337	0,0	110	6	1	216	3		1
99	Extra-territorial organizations and bodies	53	0,0	30			21	2		

\*)Field of activity declared when registered, according to CAEN classification

Table no. 7

**Operations carried on with the Trade Registers,  
by counties and categories,  
in February 2003**

County	Total of operations carried on		out of which:							
			New incorporations		Changes in statutory documents		out of which: of liquidation, dissolution		Strike off companies	
	No.	%	No.	%	No.	%	No.	%	No.	%
0	1	2	3	4	5	6	7	8	9	10
<b>Total ROMÂNIA</b>	<b>30867</b>	<b>100,0</b>	<b>8659</b>	<b>28,1</b>	<b>20985</b>	<b>68,0</b>	<b>241</b>	<b>0,8</b>	<b>1223</b>	<b>4,0</b>
ALBA	443	100,0	150	33,9	261	58,9	1	0,2	32	7,2
ARAD	491	100,0	158	32,2	331	67,4	5	1,0	2	0,4
ARGES	582	100,0	184	31,6	393	67,5	1	0,2	5	0,9
BACAU	591	100,0	164	27,7	399	67,5	9	1,5	28	4,7
BIHOR	1102	100,0	422	38,3	658	59,7	6	0,5	22	2,0
BISTRITA-NASAUD	295	100,0	83	28,1	199	67,5	3	1,0	13	4,4
BOTOSANI	278	100,0	114	41,0	162	58,3	1	0,4	2	0,7
BRASOV	724	100,0	240	33,1	469	64,8	1	0,1	15	2,1
BRAILA	425	100,0	130	30,6	283	66,6	4	0,9	12	2,8
BUZAU	473	100,0	151	31,9	300	63,4			22	4,7
CARAS-SEVERIN	119	100,0	39	32,8	65	54,6	1	0,8	15	12,6
CALARASI	192	100,0	61	31,8	129	67,2			2	1,0
CLUJ	1468	100,0	422	28,7	1027	70,0	7	0,5	19	1,3
CONSTANTA	1268	100,0	341	26,9	897	70,7	14	1,1	30	2,4
COVASNA	324	100,0	68	21,0	252	77,8			4	1,2
DAMBOVITA	473	100,0	152	32,1	295	62,4	3	0,6	26	5,5
DOLJ	597	100,0	245	41,0	329	55,1			23	3,9
GALATI	774	100,0	153	19,8	585	75,6	1	0,1	36	4,7
GIURGIU	212	100,0	74	34,9	132	62,3			6	2,8
GORJ	482	100,0	127	26,3	342	71,0			13	2,7
HARGHITA	693	100,0	211	30,4	476	68,7	1	0,1	6	0,9
HUNEDOARA	483	100,0	137	28,4	334	69,2	4	0,8	12	2,5
IALOMITA	243	100,0	96	39,5	144	59,3	2	0,8	3	1,2
IASI	767	100,0	204	26,6	557	72,6	1	0,1	6	0,8
MARAMURES	581	100,0	161	27,7	404	69,5	5	0,9	16	2,8
MEHEDINTI	202	100,0	64	31,7	130	64,4	2	1,0	8	4,0
MURES	759	100,0	225	29,6	528	69,6			6	0,8
NEAMT	480	100,0	191	39,8	280	58,3	1	0,2	9	1,9
OLT	398	100,0	94	23,6	259	65,1	2	0,5	45	11,3
PRAHOVA	1430	100,0	252	17,6	1138	79,6	11	0,8	40	2,8
SALAJ	410	100,0	267	65,1	138	33,7	1	0,2	5	1,2
SATU MARE	1718	100,0	128	7,5	936	54,5	1	0,1	654	38,1
SIBIU	664	100,0	175	26,4	472	71,1	1	0,2	17	2,6
SUCEAVA	779	100,0	243	31,2	514	66,0	3	0,4	22	2,8
TELEORMAN	304	100,0	63	20,7	239	78,6	2	0,7	2	0,7
TIMIS	967	100,0	296	30,6	665	68,8	2	0,2	6	0,6
TULCEA	151	100,0	58	38,4	82	54,3	3	2,0	11	7,3
VASLUI	267	100,0	65	24,3	193	72,3	88	33,0	9	3,4
VALCEA	451	100,0	141	31,3	297	65,9	6	1,3	13	2,9
VRANCEA	272	100,0	67	24,6	201	73,9	20	7,4	4	1,5
MUN. BUCURESTI	7102	100,0	1836	25,9	5266	74,1	27	0,4		
ILFOV	433	100,0	207	47,8	224	51,7	1	0,2	2	0,5

\*) by effect of implementation of Law no. 314/2001, art.1 and art. 6

\*\*\* Less than 0,01%

Table no. 8

**The number of incorporations in the Trade Register,  
by counties and sources of capital,  
in February 2003**

County	Total		out of which:						Rnking by: *
			Private capital			State majority capital		Mixed capital (state+private)	
			out of which:			out of which:			
			PF+AF	Companies	OC	RA	Companies	Companies	
			No.	No.	No.	No.	No.	No.	
0	1	2	3	4	5	6	7	8	9
<b>Total ROMÂNIA</b>	<b>8659</b>	<b>100,0</b>	<b>2095</b>	<b>6547</b>		<b>4</b>	<b>3</b>	<b>10</b>	<b>X</b>
ALBA	150	1,7	55	95					24
ARAD	158	1,8	16	142					20
ARGES	184	2,1	24	160					16
BACAU	164	1,9	47	117					18
BIHOR	422	4,9	276	145				1	2
BISTRITA-NASAUD	83	1,0	11	72					33
BOTOSANI	114	1,3	58	56					30
BRASOV	240	2,8	33	207					10
BRAILA	130	1,5	39	91					27
BUZAU	151	1,7	53	97		1			23
CARAS-SEVERIN	39	0,5	5	34					42
CALARASI	61	0,7	5	56					40
CLUJ	422	4,9	118	304					3
CONSTANTA	341	3,9	80	261					4
COVASNA	68	0,8	18	50					35
DAMBOVITA	152	1,8	54	98					22
DOLJ	245	2,8	62	183					8
GALATI	153	1,8	23	130					21
GIURGIU	74	0,9	8	66					34
GORJ	127	1,5	21	106					29
HARGHITA	211	2,4	109	102					12
HUNEDOARA	137	1,6		137					26
IALOMITA	96	1,1	32	64					31
IASI	204	2,4	17	187					14
MARAMURES	161	1,9	42	119					19
MEHEDINTI	64	0,7	10	54					38
MURES	225	2,6	82	143					11
NEAMT	191	2,2	15	175			1		15
OLT	94	1,1	23	70				1	32
PRAHOVA	252	2,9	71	178			1	2	7
SALAJ	267	3,1	199	68					6
SATU MARE	128	1,5	29	98		1			28
SIBIU	175	2,0	28	147					17
SUCEAVA	243	2,8	151	92					9
TELEORMAN	63	0,7	17	45				1	39
TIMIS	296	3,4	31	265					5
TULCEA	58	0,7	3	55					41
VASLUI	65	0,8	19	46					37
VALCEA	141	1,6	68	73					25
VRANCEA	67	0,8	6	61					36
MUN. BUCURESTI	1836	21,2	118	1715		2	1		1
ILFOV	207	2,4	19	183				5	13

\*) The total number of incorporations (col 1)

\*\*\* Less than 0,01%

Table no.9

**The number of incorporations in the Trade Register,  
by counties and category  
in February 2003**

County	Total		out of which:						RA	OC
			PF+AF	companies: 6560						
	No.	%		No.	SNC	SCS	SRL	SA	No.	No.
			No.		No.	No.	No.			
0	1	2	3	4	5	6	7	8	9	
<b>Total ROMÂNIA</b>	<b>8659</b>	<b>100,0</b>	<b>2095</b>	<b>10</b>	<b>1</b>	<b>6464</b>	<b>85</b>	<b>4</b>		
ALBA	150	1,7	55			95				
ARAD	158	1,8	16			141	1			
ARGES	184	2,1	24			157	3			
BACAU	164	1,9	47			114	3			
BIHOR	422	4,9	276			144	2			
BISTRITA-NASAUD	83	1,0	11			71	1			
BOTOSANI	114	1,3	58			56				
BRASOV	240	2,8	33			206	1			
BRAILA	130	1,5	39			91				
BUZAU	151	1,7	53	2		89	6	1		
CARAS-SEVERIN	39	0,5	5			34				
CALARASI	61	0,7	5			56				
CLUJ	422	4,9	118			302	2			
CONSTANTA	341	3,9	80			258	3			
COVASNA	68	0,8	18			50				
DAMBOVITA	152	1,8	54			94	4			
DOLJ	245	2,8	62			182	1			
GALATI	153	1,8	23			130				
GIURGIU	74	0,9	8			65	1			
GORJ	127	1,5	21			106				
HARGHITA	211	2,4	109			99	3			
HUNEDOARA	137	1,6				134	3			
IALOMITA	96	1,1	32			63	1			
IASI	204	2,4	17			184	3			
MARAMURES	161	1,9	42			119				
MEHEDINTI	64	0,7	10			53	1			
MURES	225	2,6	82			143				
NEAMT	191	2,2	15			175	1			
OLT	94	1,1	23			71				
PRAHOVA	252	2,9	71	1		174	6			
SALAJ	267	3,1	199			68				
SATU MARE	128	1,5	29			97	1	1		
SIBIU	175	2,0	28			146	1			
SUCEAVA	243	2,8	151			92				
TELEORMAN	63	0,7	17			45	1			
TIMIS	296	3,4	31	2		261	2			
TULCEA	58	0,7	3			55				
VASLUI	65	0,8	19			45	1			
VALCEA	141	1,6	68			71	2			
VRANCEA	67	0,8	6			61				
MUN. BUCURESTI	1836	21,2	118	5		1688	23	2		
ILFOV	207	2,4	19		1	179	8			

Table no. 10

**The number of incorporations in the Trade Register, by field of activity\*  
and categories in February 2003**

CAEN segment	Field of activity	Total		out of which:						
				PF+AF	companies: 6560				RA	OC
		SNC	SCS		SRL	SA	No.	No.		
		No.	%	No.	No.	No.			No.	No.
0	1	2	3	4	5	6	7	8	9	10
	<b>Total ROMÂNIA</b>	<b>8659</b>	<b>100,0</b>	<b>2095</b>	<b>10</b>	<b>1</b>	<b>6464</b>	<b>85</b>	<b>4</b>	
1	Agriculture, hunting and related service activities	227	2,6	62			159	5	1	
2	Forestry, logging and related service activities	72	0,8	15			53	3	1	
5	Fishing, fish farming and related service activities	8	0,1	1			7			
10	Mining of coal and lignite; extraction of peat	2	0,0				2			
11	Extraction of crude petroleum and natural gas; service activities incidental to oil and gas extraction, excluding surveying									
12	Mining of uranium and thorium ores									
13	Mining of metal ores									
14	Other mining and quarrying	6	0,1				6			
15	Manufacture of food products and beverages	207	2,4	51			153	3		
16	Manufacture of tobacco products									
17	Manufacture of textiles	41	0,5	15			25	1		
18	Manufacture of wearing apparel; dressing and dyeing of fur	96	1,1	25			70	1		
19	Tanning and dressing of leather; manufacture of luggage, handbags, saddlery, harness and footwear	26	0,3	3			23			
20	Manufacture of wood and of products of wood and cork, except furniture; manufacture of articles of straw and plaiting materials	136	1,6	40			96			
21	Manufacture of pulp, paper and paper products	13	0,2	2			11			
22	Publishing, printing and reproduction of recorded media	71	0,8	11			59	1		
23	Manufacture of coke, refined petroleum products and nuclear fuel	1	0,0					1		
24	Manufacture of chemicals and chemical products	20	0,2				19	1		
25	Manufacture of rubber and plastic products	32	0,4	3			28	1		
26	Manufacture of other non-metallic mineral products	53	0,6	20			33			
27	Manufacture of basic metals	5	0,1	2			3			
28	Manufacture of fabricated metal products, except machinery and equipment	114	1,3	17			95	2		
29	Manufacture of machinery and equipment n.e.c.	13	0,2				12	1		
30	Manufacture of office machinery and computers	6	0,1				6			
31	Manufacture of electrical machinery and apparatus n.e.c.	11	0,1				11			
32	Manufacture of radio, television and communication equipment and apparatus	2	0,0				2			
33	Manufacture of medical, precision and optical instruments, watches and clocks	35	0,4	20			15			
34	Manufacture of motor vehicles, trailers and semi- trailers	6	0,1				6			
35	Manufacture of other transport equipment	6	0,1				6			
36	Manufacture of furniture; manufacturing n.e.c.	110	1,3	30			80			
37	Recycling	21	0,2				20	1		
40	Electricity, gas, steam and hot water supply	10	0,1				8	2		
41	Collection, purification and distribution of water	2	0,0				1		1	
45	Construction	655	7,6	127	1		520	7		

\*)Field of activity declared when registered, according to CAEN classification

Table no. 10  
(continuance)

The number of incorporations in the Trade Register, by field of activity\*  
and categories in February 2003

CAEN segment	Field of activity	Total		out of which:						
				PF+AF	companies: 6560				RA	OC
					SNC	SCS	SRL	SA		
					No.	No.	No.	No.		
0	1	2	3	4	5	6	7	8	9	10
	<b>Total ROMÂNIA</b>	<b>8659</b>	<b>100,0</b>	<b>2095</b>	<b>10</b>	<b>1</b>	<b>6464</b>	<b>85</b>	<b>4</b>	
50	Sale, maintenance and repair of motor vehicles and motorcycles; retail sale of automotive fuel	256	3,0	52			204			
51	Wholesale trade and commission trade, except of motor vehicles and motorcycles	958	11,1	56	1		887	14		
52	Retail trade, except of motor vehicles and motorcycles; repair of personal and household goods	2401	27,7	889	1	1	1507	3		
55	Hotels and restaurants	355	4,1	55			298	2		
60	Land transport; transport via pipelines	585	6,8	195			388	2		
61	Water transport	3	0,0				3			
62	Air transport	3	0,0				3			
63	Supporting and auxiliary transport activities; activities of travel agencies	74	0,9	3			71			
64	Post and telecommunications	64	0,7	1			63			
65	Financial intermediation, except insurance and pension funding	56	0,6	2			43	11		
66	Insurance and pension funding, except compulsory social security	14	0,2	8			2	4		
67	Activities auxiliary to financial intermediation	72	0,8	16			56			
70	Real estate activities	128	1,5	6			121	1		
71	Renting of machinery and equipment without operator and of personal and household goods	21	0,2	5			16			
72	Computer and related activities	198	2,3	14			181	3		
73	Research and development	7	0,1	1			4	1	1	
74	Other business activities	940	10,9	150	6		775	9		
75	Public administration and defence; compulsory social security	2	0,0				2			
80	Education	54	0,6	32			22			
85	Health and social work	133	1,5	21			112			
90	Sewage and refuse disposal, sanitation and similar activities	9	0,1				8	1		
91	Activities of membership organizations n.e.c.	2	0,0	1				1		
92	Recreational, cultural and sporting activities	98	1,1	22	1		72	3		
93	Other service activities	212	2,4	119			93			
95	Activities of households as employers of domestic staff	7	0,1	3			4			
99	Extra-territorial organizations and bodies									

\*)Field of activity declared when registered, according to CAEN classification

Table no. 11

**Number of companies registered and the amount  
of subscribed capital, by county  
in February 2003**

County	Total registered companies		Subscribed capital		Average subscribed capital on company
	No.	%	mil. ROL	%	mil. ROL
0	1	2	3	4	5
<b>Total ROMÂNIA</b>	<b>6560</b>	<b>100,0</b>	<b>6528347,5</b>	<b>100,0</b>	<b>999,9</b>
ALBA	95	1,4	873,4	0,0	9,2
ARAD	142	2,2	1408,6	0,0	9,9
ARGES	160	2,4	14872,7	0,2	93,0
BACAU	117	1,8	639,8	***	5,5
BIHOR	146	2,2	2616,8	0,0	17,9
BISTRITA-NASAUD	72	1,1	216,7	***	3,1
BOTOSANI	56	0,9	432,0	***	7,7
BRASOV	207	3,2	4906,2	0,1	23,7
BRAILA	91	1,4	416,0	***	4,6
BUZAU	97	1,5	645,9	***	6,9
CARAS-SEVERIN	34	0,5	69,1	***	2,0
CALARASI	56	0,9	132,4	***	2,4
CLUJ	304	4,6	7989,4	0,1	26,4
CONSTANTA	261	4,0	6121,6	0,1	23,6
COVASNA	50	0,8	220,3	***	4,4
DAMBOVITA	98	1,5	4966,6	0,1	51,2
DOLJ	183	2,8	7640,1	0,1	42,4
GALATI	130	2,0	394,2	***	3,0
GIURGIU	66	1,0	563,9	***	8,7
GORJ	106	1,6	308,0	***	2,9
HARGHITA	102	1,6	10906,1	0,2	108,0
HUNEDOARA	137	2,1	6482,9	0,1	48,0
IALOMITA	64	1,0	240,9	***	3,8
IASI	187	2,9	1665,7	0,0	9,0
MARAMURES	119	1,8	594,3	***	5,0
MEHEDINTI	54	0,8	5861,7	0,1	110,6
MURES	143	2,2	433,4	***	3,0
NEAMT	176	2,7	191858,6	2,9	1096,3
OLT	71	1,1	1134,4	0,0	16,0
PRAHOVA	181	2,8	24120,4	0,4	134,8
SALAJ	68	1,0	655,8	0,0	9,6
SATU MARE	98	1,5	545,1	***	5,6
SIBIU	147	2,2	3776,0	0,1	25,7
SUCEAVA	92	1,4	308,9	***	3,4
TELEORMAN	46	0,7	5194,4	0,1	112,9
TIMIS	265	4,0	8735,6	0,1	33,1
TULCEA	55	0,8	831,0	0,0	15,1
VASLUI	46	0,7	697,0	0,0	15,2
VALCEA	73	1,1	787,2	0,0	10,9
VRANCEA	61	0,9	247,9	***	4,1
MUN. BUCURESTI	1716	26,2	6131641,0	93,9	3583,7
ILFOV	188	2,9	76195,7	1,2	407,5

*Note: The average does not include filials because according to the Law no.31/1990 they are not juridical persons*

\*\*\* Less than 0,01%

**Number of registered companies and the amount  
of subscribed capital by category,  
in February 2003**

Company type	Total registered companies		Subscribed capital		Average subscribed capital on company
	No.	%	mil. ROL	%	mil. ROL
0	1	2	3	4	5
<b>Total ROMÂNIA</b>	<b>6560</b>	<b>100,0</b>	<b>6528347,5</b>	<b>100,0</b>	<b>999,6</b>
SNC	10	0,2	33,71	***	3,4
SCS	1	0,0			
SA	85	1,3	6386904,93	97,8	101379,4
SRL	6464	98,5	141408,90	2,2	21,9
SCA					

*Note: The average does not include filials because according to the Law no.31/1990 they are not juridical persons*

\*\*\* Less than 0,01%

Diagram no.5

