



MINISTRY OF JUSTICE

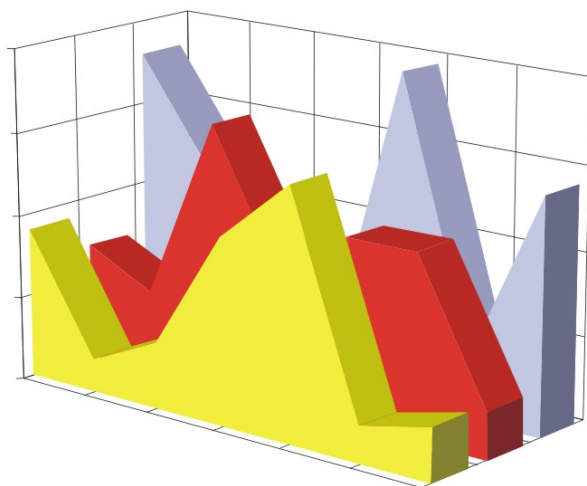
THE NATIONAL TRADE REGISTER OFFICE

București, Bd. Unirii nr. 74, Bl. J3b, tronson II+III, sector 3; Telefon: +40 21 316.08.04, 316.08.10; Fax: +40 21 316.08.03; Cod poștal: 030837
Website: www.onrc.ro; E-mail: onrc@onrc.ro; Cod de identificare Fiscală: 14942091; înregistrat ca operator date personale sub nr.1350

COMPANIES BY FOREIGN DIRECT INVESTMENT

STATISTICAL SYNTHESIS

OF THE NATIONAL TRADE REGISTER'S DATA ON 30th OF SEPTEMBER 2005 - PROVISORY DATA



**MINISTRY OF JUSTICE
THE NATIONAL TRADE REGISTER OFFICE**

- Operations such as incorporation of companies, changes in statutory documents and strike-off dissolution of companies are being regulated by Law No.26/1990 reissued, Law No.31/1990, reissued, OUG No.76/2001, reissued and Methodology Norms No. P/608/1998.

- This synthesis presents the trends on operations regarding companies by foreign direct investment registered in The Trade Register Office attached to the law court of Bucharest and in The Trade Register Offices attached to the law court in each county of Romania.

- Information provided by the Central Trade Register concern operations compulsory by law to be registered in the trade registers attached to the law courts.

• No part of the content of this publication, in original or in any modified format, September be reproduced, stored in a retrieval system, or transmitted, in any form or by any means, without the prior permission in writing of The Ministry of Justice – The National Trade Register Office.

• The content of this publication September be referred to in articles, studies, books, as supporting or explanatory data under the condition only, the source of the information to be clearly and precisely specified.

Printed: September 2005

Table of Contents

	Page
1 Explanatory Note	1
2.1 Tables and statistical graphics for September 2005	3
Table No.1 – Number of companies by foreign direct investment and the amount of the subscribed capital, balance account at 31 st of September 2005	3
Diagram No. 1 – The structure of the number of companies	3
Diagram No. 2 – The structure of investment, in equivalent of currency	3
Table No.2 – Classification of companies by foreign direct investment by the investors' countries of origin, balance account at 31 st of September 2005	4
Diagram No. 3 – The structure upon sector of activity of companies by foreign direct investment, incorporated between 1991 and September 2005	5
Diagram No. 4 – The structure upon sector of activity in the amount of subscribed capital in companies by foreign direct investment, during 1991-September 2005	5
Table No. 3 – The number of companies by foreign direct investment and the amount of the subscribed capital, balance account at the end of each month of 2005	6
Diagram No. 5 – Trend in the number of companies' balance account	6
Diagram No. 6 – Trend of foreign investment balance account, in equivalent of currency	6
Table No. 4 – Comparative data on new companies by foreign direct investment and the subscribed capital, between January– September 2004 and 2005	7
Diagram No. 7 – Dynamics of the number of new companies by foreign direct investment, between January– September and 2005	7
Diagram No. 8 – Dynamics of the amount of foreign direct investment in new companies, between January– September 2004 and 2005	7
Table No. 5 – Incorporation of companies by foreign direct investment, during September 2005	8
Table No. 6 – Statutory increase of the issued capital, in companies by foreign direct investment during September 2005	9
Table No. 7 – Strike-off of companies by foreign direct investment, from the trade register, during September 2005	10
Table No. 8 – Changes by cession in the issued capital of the companies by foreign direct investment, during September 2005	11
Table No. 9 – Incorporation of companies by foreign direct investment, according to the development regions, during September 2005	12
Table No. 10 – Statutory increase in the issued capital of companies by foreign direct investment according to the development regions, during September 2005	12
Table No. 11 – Strike-off of companies by foreign direct investment and the amount of their issued capital, according to the development regions, during September 2005	12
Table No. 12 – Incorporation of companies by foreign direct investment, by continents according to the investors' country of origin, during September 2005	13
Table No. 13 – Increase in the issued capital of companies by foreign direct investment, by continents according to the investors' country of origin, during September 2005	13
Table No. 14 – Strike-off of companies by foreign direct investment and their issued capital, by continents according to the investors' country of origin, during September 2005	13
Table No. 15 – Incorporation of companies by foreign direct investment, by economical groups of countries according to the investors' country of origin, during September 2005	14
Table No. 16 – Increase in the issued capital of companies by foreign direct investment, by economical groups of countries according to the investors' country of origin, during September 2005	14
Table No. 17 – Strike-off of companies by foreign direct investment and their issued capital, by economical groups of countries according to the investors' country of origin, during September 2005	14

Table No. 18 – Classification by countries of origin of investors in companies by foreign direct investment, incorporated during September 2005	15
Table No. 19 – Classification by investors’ countries of origin according to the amount of the increase in the issued capital, during September 2005	16
Table No. 20 – Classification of the top 40 companies by foreign direct investment in the total subscribed capital, in equivalent of currency, during September 2005	17
2.2 Cumulative data for 1991 – 2004	18
Table No. 21 – Number of registered companies with foreign investment capital and amount of subscribed capital, between 1991 and 2004	18
Diagram No. 9 – Evolution of the number of companies	18
Diagram No. 10 – Evolution of foreign investment	18
Table No. 22 – Number of registered companies, with foreign capital investment and the value of the invested capital, between 1991 and 2004	19
Table No. 23 – Number of registered companies, with foreign capital investment and the value of the invested capital, on economic development areas, between 1991 and 2004	20
Table No. 24 – Number of registered companies, with foreign capital investment and the value of the invested capital, on continents between 1991 and 2004	20
Table No. 25 – Number of registered companies, with foreign capital investment and the value of the invested capital, on economic groups, between 1991 and 2004	20
Diagram No. 11 – Percentage of companies with foreign investment, between 1991 and 2004, on fields of activity	21
Diagram No. 12– Percentage of foreign currency invested capital in companies with foreign investment, between 1991 and 2004, on fields of activity	21
Table No. 26 – Countries classification on foreign investment capital registered between 1991 and December 2004	22

Explanatory Note

- “**Company by foreign direct investment**” should be understood as any company partially or entirely set-up with the contribution in issued capital of physical or legal persons, resident or having the registered office outside Romania’s state frontiers.

- “**Foreign investor**” is any physical or legal person resident or having the business headquarter outside Romania’s borders, being associate/shareholder in a company registered in Romania.

- “**Social capital**” known as well as “issued capital” or “initial capital” is the total contribution in cash and assets subscribed by shareholders/associates while setting-up and registering a company or while increasing the initial capital during the company’s life.

The capital *subscribed* by a foreign investor should be, due to the Romanian legislation in force, in local currency ROL or/and in other convertible currency.

The increase in capital by changes in the statutory documents includes:

- foreign investors’ contributions from new own resources, in cash and/or assets, in ROL and/or currency;
- contributions of foreign investors from dividends obtained in Romania;
- getting in possession of equities/shares by a non-resident person from a resident one.

The changes in capital by decrease/(increase) through cession include:

- the contributions in capital of non-resident associates/shareholders yielded to/(received from) resident associates/shareholders, in ROL/currency;

- The **foreign direct investment in Romania (Is)** equals to the total value of the direct foreign investment subscribed in the new registered company (**I**) *plus* the increase in issued capital through statutory documents(**M**), *plus/minus* the cession of the issued capital *by/to* resident associates/shareholders (**C**), *minus* the subscribed capital in the companies being struck-off from the Trade Register (**R**), that is:

$$\mathbf{Is = I + M \pm C - R}$$

Usual Terms:

- **incorporation** – represents the registration of the company in the trade registry awarding the quality of legal person.

- **other statutory documents** – represent the official registration of the changes occurred in a company’s life, such as: changes of the registered office address, increase or decrease of the issued capital, merger, liquidation, strike-off, etc.

- **strike-off** – represents the removal of a company from the trade registry, due to dissolution and liquidation, being also the very moment the company loses its quality of legal person. Data also include the companies under the provisions of Law No. 314/2001.

- **Operations** represent all the records in the trade registry including incorporations, other statutory documents and strike-off of companies by foreign direct investment, irrespective of the object of activity and the company’s type.

• **Terms used in tables and charts**

➤ **Number of companies:** depending on the specific table represents either the number of companies incorporated in the reference period, or the number of companies registering an increase of the issued capital, or the number of companies being struck-off from the trade registry.

➤ **Amount of the subscribed capital:**

- **total, in ROL:** the amount of the subscribed capital resulted from adding the amount subscribed in the local currency/ROL and the amount subscribed in foreign convertible currency being expressed in ROL, according to the exchange rate communicated by the National Bank of Romania at the date the deed was issued.

- **total, in equivalent of currency:**

USD : the amount of the resulted from adding and expressing in USD the convertible currency and the local currency (ROL), according to the exchange rate communicated by the National Bank of Romania at the date the deed was issued.

Euro : the balance account registered in the end of each month, calculated in equivalent of USD and expressed in Euro according to the exchange rate EUR/USD communicated by National Bank of Romania in the last working day of the due month.

➤ **Regional development:**

<i>North-East:</i>	Suceava, Botoșani, Neamț, Iași, Bacău, Vaslui.
<i>South-East:</i>	Vrancea, Galați, Buzău, Brăila, Tulcea, Constanța.
<i>South-Muntenia:</i>	Argeș, Dâmbovița, Prahova, Teleorman, Giurgiu, Călărași, Ialomița.
<i>South-West Oltenia:</i>	Gorj, Vâlcea, Dolj, Mehedinți, Olt.
<i>West:</i>	Arad, Caraș-Severin, Hunedoara, Timiș.
<i>North-West:</i>	Bihor, Bistrița, Cluj, Satu Mare, Sălaj, Maramureș.
<i>Center:</i>	Alba, Brașov, Covasna, Harghita, Mureș, Sibiu.
<i>Bucharest-Ilfov:</i>	București, Ilfov.

Source:

The integrated IT system of the trade registry is designed by The National Trade Registry Office according to the provisions of the related legislation in force. The source of information is the computerised system of the trade registers handled by the Trade Register Offices attached to the law courts.

**Number of companies by foreign direct investment
and the amount of the subscribed capital,
balance account at 30 September 2005**

Balance account by end of period	Number of companies		Amount of subscribed capital					
			Total in ROL		Total in currency		Total in currency	
	No.	%	mii RON	%	thousand USD	%	thousand EURO	%
0	1	2	3	4				
30 September 2005, out of which	108564	108,7	62068304,1	239,5	14817552,4	116,5	12318813,2	116,5
at 31 December 2004	99847	100,0	25910410,9	100,0	12720574,6	100,0	10575456,7	100,0

Note: column No. 1 shows the number of companies incorporated in the due period. The data concerning the amount of the subscribed capital include the records on the issued capital in companies incorporated in the related period plus the records of increase in capital and minus the subscribed capital in companies being struck-off from the trade register in the same period. The percentage inserted in column No. 1, 2, 3 and 4 shows the trend compared to the records of December 2004.

Diagram no. 1

Diagram no. 2

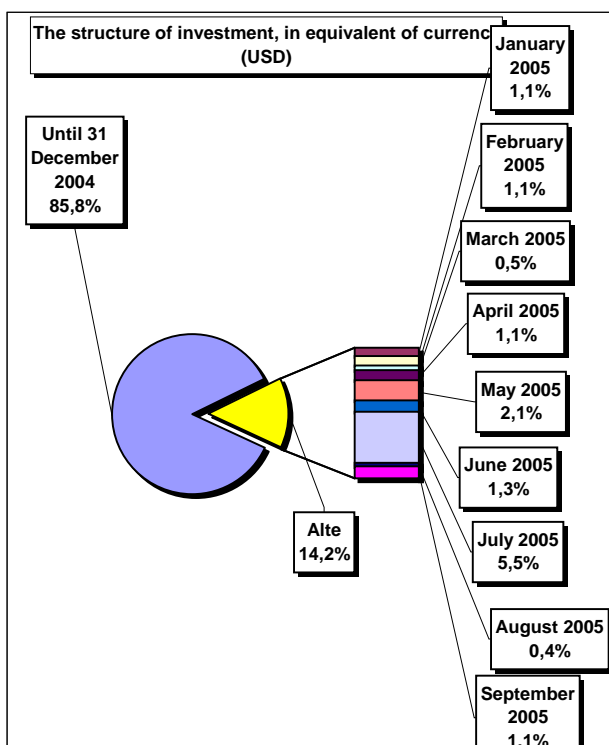
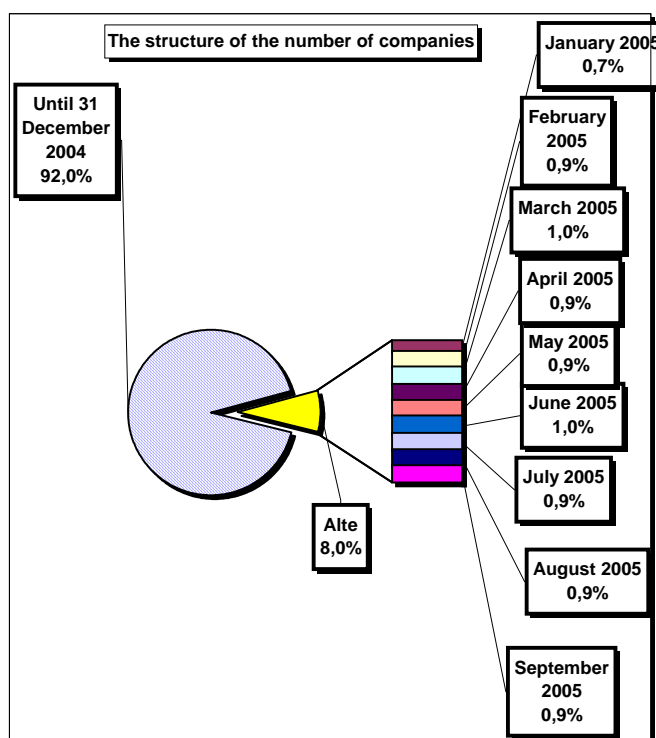


Table no. 2

**Classification* of companies by foreign direct investment
by the investors' countries of origin,
balance account at 31 September 2005**

No. crt.	Countries	Companies by foreign investment		Amount of subscribed capital					
				Total in local currency		Total in equivalent of currency		Total in equivalent of currency	
		No.	%	mii RON	%	thousand USD	%	thousand EURO	%
0	1	2		3		4		5	
	Total ROMANIA	108564	100,0	62068304,13	100,0	14817552,4	100,0	12318813,2	100,0
1	AUSTRIA	3451	3,18	4665231,6	7,52	2277622,5	15,37	1893538,5	15,37
2	NETHERLAND	2183	2,01	4797665,2	7,73	2126089,3	14,35	1767558,9	14,35
3	FRANCE	3899	3,59	3402391,0	5,48	1438829,6	9,71	1196194,4	9,71
4	GERMANY	12564	11,57	2714492,8	4,37	1283421,2	8,66	1066993,1	8,66
5	ITALY	18077	16,65	1811977,7	2,92	905928,2	6,11	753158,1	6,11
6	U.S.A.	4285	3,95	992361,9	1,60	786795,4	5,31	654115,2	5,31
7	ANTILELE OLANDEZE	10	***	2154203,3	3,47	675089,1	4,56	561246,3	4,56
8	GREAT BRITAIN	2106	1,94	1397434,9	2,25	617885,2	4,17	513689,0	4,17
9	GREECE	3049	2,81	1483524,9	2,39	615054,3	4,15	511335,4	4,15
10	CYPRUS	1590	1,46	909718,5	1,47	539264,7	3,64	448326,5	3,64
11	TURKEY	8835	8,14	589584,4	0,95	473702,3	3,20	393820,1	3,20
12	SWITZERLAND	1467	1,35	747261,7	1,20	436280,6	2,94	362709,0	2,94
13	HUNGARY	5418	4,99	668006,9	1,08	427026,9	2,88	355015,8	2,88
14	I.VIRGINE BRIT.	225	0,21	1107190,7	1,78	358654,6	2,42	298173,4	2,42
15	LUXEMBOURG	308	0,28	32096334,3	51,71	299870,7	2,02	249302,4	2,02
16	CHINA	8039	7,40	472618,5	0,76	189452,6	1,28	157504,5	1,28
17	SPAIN	1110	1,02	179879,9	0,29	185576,2	1,25	154281,8	1,25
18	SWEDEN	834	0,77	280805,9	0,45	111770,5	0,75	92922,2	0,75
19	BELGIUM	1444	1,33	115541,6	0,19	78789,3	0,53	65502,7	0,53
20	WITH OUT CITIZENSHIP	22	0,02	670,7	***	75431,9	0,51	62711,5	0,51
21	JAPAN	173	0,16	197021,9	0,32	73745,8	0,50	61309,7	0,50
22	LIECHTENSTEIN	160	0,15	96434,6	0,16	73544,5	0,50	61142,5	0,50
23	A.R. OF SYRIA	4944	4,55	69958,0	0,11	62853,1	0,42	52253,9	0,42
24	SOUTH KOREA	87	0,08	20374,5	0,03	57783,1	0,39	48039,0	0,39
25	CANADA	1077	0,99	49981,6	0,08	57148,1	0,39	47511,0	0,39
26	MARSHALL ISLANDS	7	***	154316,8	0,25	48329,1	0,33	40179,2	0,33
27	IRAQ	5046	4,65	67398,7	0,11	48030,2	0,32	39930,7	0,32
28	LEBANON	3113	2,87	74383,9	0,12	47729,8	0,32	39680,9	0,32
29	ISRAEL	3134	2,89	55749,2	0,09	34983,1	0,24	29083,7	0,24
30	DENMARK	316	0,29	50738,2	0,08	22342,6	0,15	18574,9	0,15
31	FORMER YUGOSLAVIE	723	0,67	9326,1	0,02	22272,5	0,15	18516,6	0,15
32	IRELAND	320	0,29	12795,1	0,02	22037,1	0,15	18320,9	0,15
33	IRAN	2394	2,21	26206,3	0,04	19479,1	0,13	16194,3	0,13
34	PANAMA	121	0,11	13491,9	0,02	17593,1	0,12	14626,3	0,12
35	JORDAN	2896	2,67	19201,4	0,03	16575,5	0,11	13780,3	0,11
36	MOLDAVIA	2065	1,90	22854,7	0,04	15659,4	0,11	13018,7	0,11
37	ARGENTINA	26	0,02	66725,7	0,11	13846,2	0,09	11511,3	0,09
38	GIBRALTAR	30	0,03	26090,4	0,04	13011,7	0,09	10817,5	0,09
39	ICELAND	12	0,01	13720,9	0,02	12839,0	0,09	10673,9	0,09
40	POLAND	260	0,24	26834,3	0,04	11921,8	0,08	9911,3	0,08
41	BULGARIA	600	0,55	13512,4	0,02	11204,0	0,08	9314,6	0,08
42	THAILANDA	15	0,01	17678,0	0,03	11087,5	0,07	9217,8	0,07
43	NEW ZEELAND	16	0,01	35206,8	0,06	11060,3	0,07	9195,2	0,07
44	BELIZE	14	0,01	28254,6	0,05	11057,2	0,07	9192,6	0,07
45	AUSTRALIA	465	0,43	9274,6	0,01	10814,8	0,07	8991,1	0,07
46	EGYPT	1162	1,07	15434,8	0,02	10596,9	0,07	8809,9	0,07
47	FINLAND	62	0,06	16348,1	0,03	10394,9	0,07	8641,9	0,07
48	CZECH REPUBLIC	256	0,24	9846,1	0,02	10249,5	0,07	8521,1	0,07
49	SLOVENIA	58	0,05	26547,0	0,04	10071,0	0,07	8372,7	0,07
50	PORTUGAL	139	0,13	26743,0	0,04	9521,6	0,06	7916,0	0,06

*) includes countries selected upon the amount of the foreign direct investment, in equivalent of currency USD, ranking on a descending scale (col 4)

*** Less than 0,01%

Diagram no. 3

The structure upon sector of activity* of companies by foreign direct investment, incorporated between 1991 and September 2005

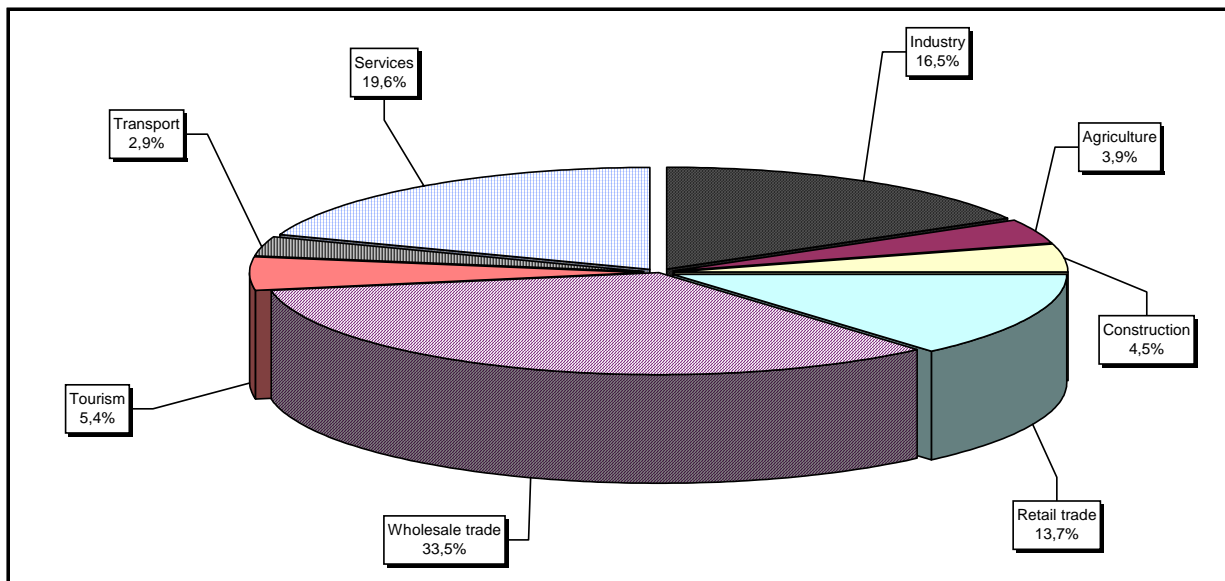
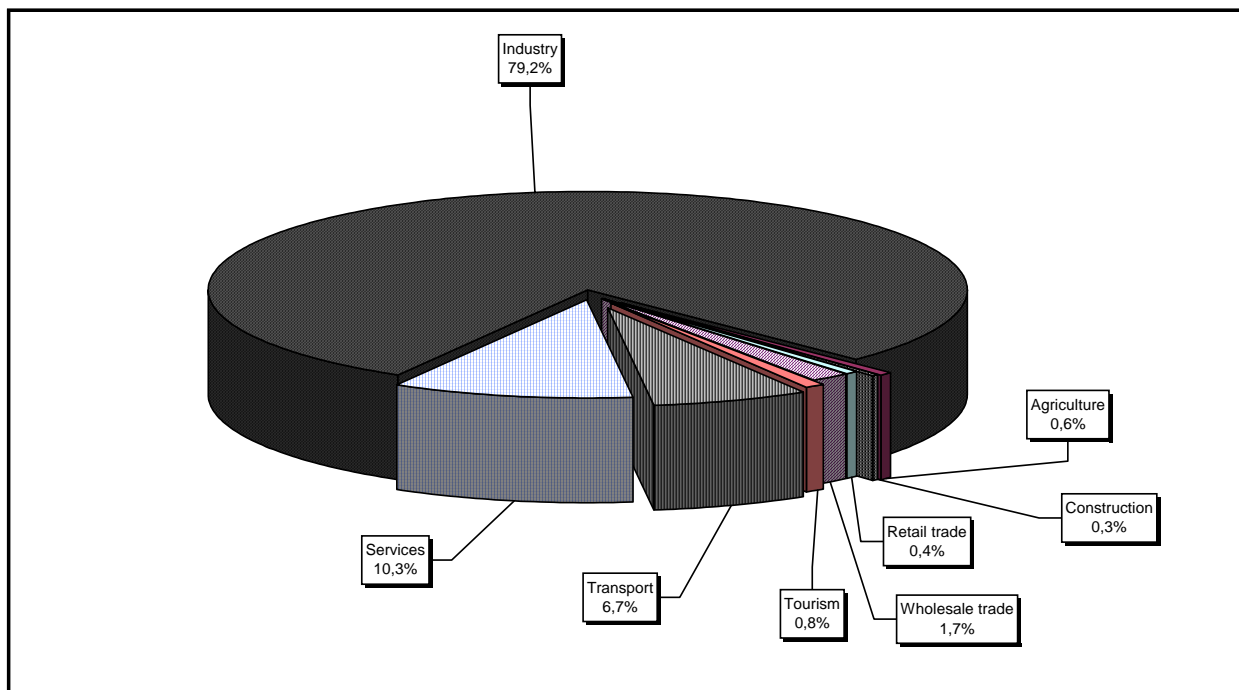


Diagram no. 4

The structure upon sector of activity in the amount of subscribed capital** in companies by foreign direct investment, during 1991 - September 2005



*) Calculated upon the main sector of activity declared

**) Calculated upon the total amount of the subscribed capital, in equivalent of currency (USD)

Table no. 3

**The number of companies by foreign direct investment
and the amount of the subscribed capital,
balance account in the end of each month of 2005**

balance account at 30 April 2004	Number of companies		Amount of subscribed capital					
			Total in local currency		Total in equivalent of currency		Total in equivalent of currency	
	No.	%	mii RON	%	thousand USD	%	thousand EURO	%
0	1		2		3		4	
DECEMBER 2004	99847	100,0	25910410,9	100,0	12720574,6	100,0	10575456,7	100,0
JANUARY 2005	100619	100,8	26346957,4	101,7	12880840,7	101,3	10708696,5	101,3
FEBRUARY 2005	101572	101,7	26825423,0	103,5	13037341,4	102,5	10838805,9	102,5
MARCH 2005	102638	102,8	26991239,9	104,2	13109399,3	103,1	10898712,4	103,1
APRIL 2005	103613	103,8	27277314,0	105,3	13276077,8	104,4	11037283,2	104,4
MAY 2005	104564	104,7	28088677,9	108,4	13593098,1	106,9	11300843,2	106,9
JUNE 2005	105637	105,8	28678094,4	110,7	13780936,6	108,3	11457005,8	108,3
JULY 2005	106633	106,8	61410839,0	237,0	14598757,0	114,8	12136914,1	114,8
AUGUST 2005	107628	107,8	61627464,1	237,8	14654135,4	115,2	12182953,9	115,2
SEPTEMBER 2005	108564	108,7	62068304,1	239,5	14817552,4	116,5	12318813,2	116,5

Note: column no. 1 shows the number of companies incorporated in the due period. The data concerning the amount of the subscribed capital include the records on the issued capital in companies incorporated in the related period plus the records of increase in capital and minus the subscribed capital in companies being struck-off from the trade register in the same period. The percentage inserted in column No. 1,2,3 and 4 shows the trend compared to the records of December 2004.

Diagram no. 5

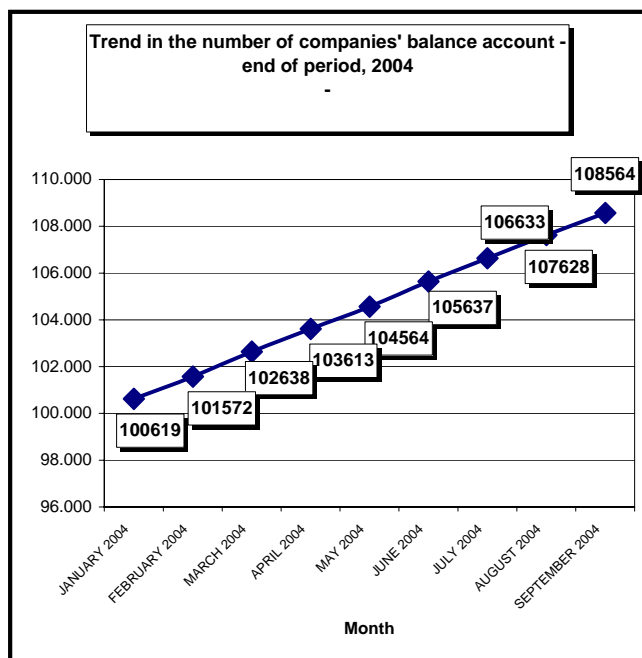


Diagram no. 6

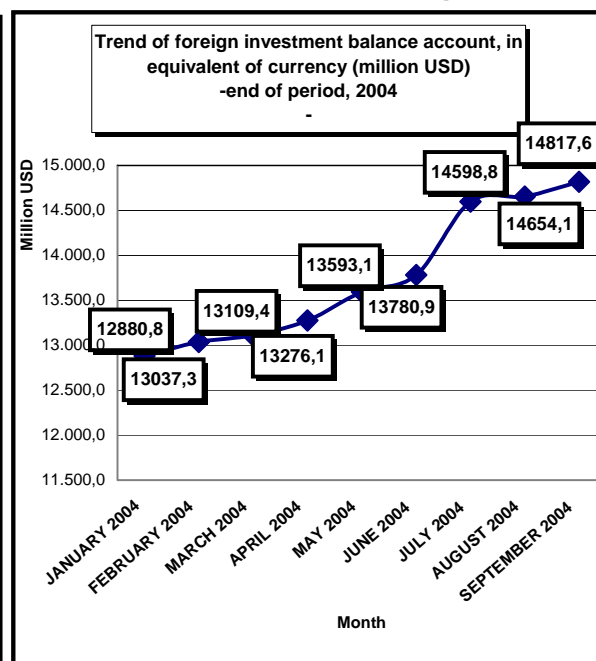


Table no. 4

**Comparative data on new companies by foreign direct investment and the subscribed capital,
between January - September 2004 and 2005**

Month	2004				2005					
	New companies		Subscribed capital, in equivalent of currency		New companies		Trend related to 2004 (5/1)	Subscribed capital, in equivalent of currency		Trend related to 2004 (8/3)
	No.	%	thousand USD	%	No.	%	%	thousand USD	%	%
0	1	2	3	4	5	6	7	8	9	10
Jan-December out of which:	7262	100,0	80883,3	100,0	8717	100,0	120,0	71852,0	100,0	88,8
JANUARY	580	8,0	3131,3	3,9	772	8,9	133,1	3802,6	5,3	121,4
FEBRUARY	665	9,2	11664,7	14,4	953	10,9	143,3	6124,9	8,5	52,5
MARCH	923	12,7	10760,9	13,3	1066	12,2	115,5	6493,2	9,0	60,3
APRIL	781	10,8	20333,6	25,1	975	11,2	124,8	4941,6	6,9	24,3
MAY	828	11,4	5743,7	7,1	951	10,9	114,9	16067,1	22,4	279,7
JUNE	828	11,4	14161,7	17,5	1073	12,3	129,6	6200,5	8,6	43,8
JULY	889	12,2	5914,2	7,3	996	11,4	112,0	10552,9	14,7	178,4
AUGUST	869	12,0	3636,3	4,5	995	11,4	114,5	12176,7	16,9	334,9
SEPTEMBER	899	12,4	5536,9	6,8	936	10,7	104,1	5492,6	7,6	99,2

Note: columns No. 1 and No. 5 show the number of new companies incorporated in the due period. The data on the subscribed capital include the initial capital subscribed in the related period. Columns No. 2, 4, 6 and 9 show the weight of each month in total period referred to.

Diagram no. 7

Diagram no. 8

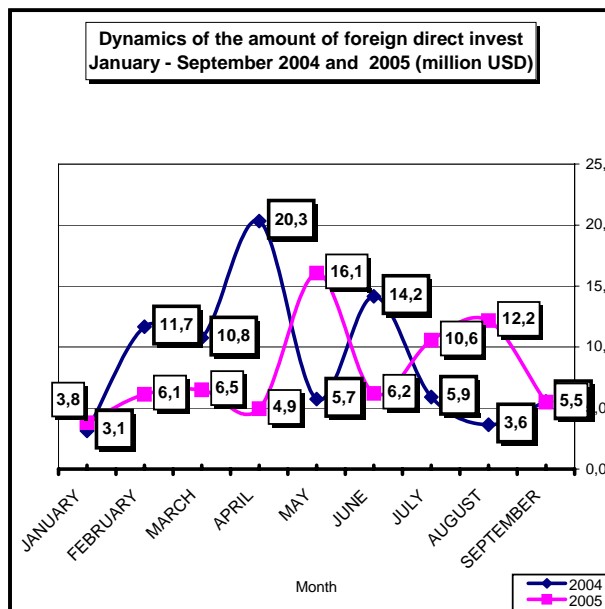
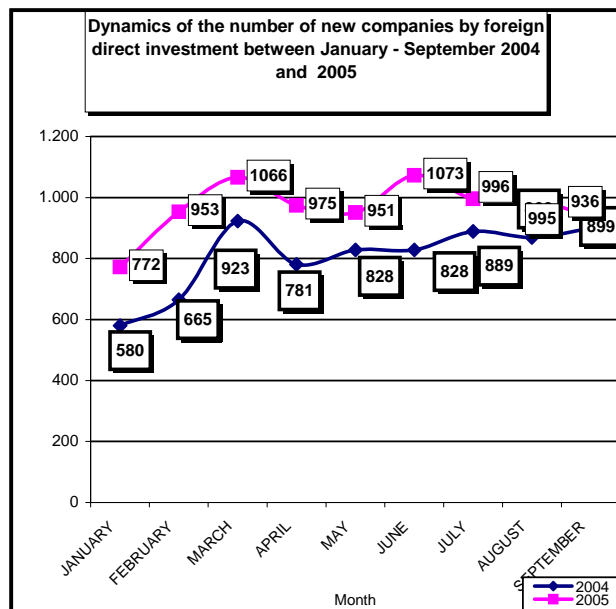


Table no. 5

**Incorporation of companies by foreign direct investment,
during September 2005**

balance account at 30 April 2004	Number of companies		Amount of subscribed capital						Ranking by:	
			Total in local currency		Total in equivalent of currency		Total in equivalent of currency			
	No.	%	mii RON	%	USD	%	EURO	%		
0	1		2		3		4		5	
Total ROMANIA	936	100,0	15708,2	100,0	5492631,0	100,0	4566388,1	100,0	*	**
ALBA	17	1,82	5,7	0,04	1973,0	0,04	1640,3	0,04	13	22
ARAD	33	3,53	249,4	1,59	87979,0	1,60	73142,8	1,60	6	6
ARGES	13	1,39	18,3	0,12	6401,0	0,12	5321,6	0,12	14	16
BACAU	11	1,18	2,1	0,01	591,0	0,01	491,3	0,01	16	30
BIHOR	31	3,31	36,6	0,23	574,0	0,01	477,2	0,01	7	31
BISTRITA-NASAUD	9	0,96	3,0	0,02	1037,0	0,02	862,1	0,02	18	24
BOTOSANI	6	0,64	1,2	***	392,0	***	325,9	***	21	34
BRASOV	37	3,95	546,1	3,48	184176,0	3,35	153117,7	3,35	4	4
BRAILA	3	0,32	0,6	***	210,0	***	174,6	***	24	35
BUZAU	7	0,75	8,2	0,05	780,0	0,01	648,5	0,01	20	26
CARAS-SEVERIN	18	1,92	5,9	0,04	2050,0	0,04	1704,3	0,04	12	21
CALARASI	1	0,11	0,2	***	70,0	***	58,2	***	26	39
CLUJ	42	4,49	127,2	0,81	44761,0	0,81	37212,8	0,81	3	10
CONSTANTA	24	2,56	15,2	0,10	5329,0	0,10	4430,4	0,10	9	19
COVASNA	7	0,75	386,3	2,46	134498,0	2,45	111817,1	2,45	20	5
DAMBOVITA	11	1,18	29,8	0,19	10586,0	0,19	8800,8	0,19	16	12
DOLJ	12	1,28	11,3	0,07	3785,0	0,07	3146,7	0,07	15	20
GALATI	17	1,82	10,2	0,06	402,0	***	334,2	***	13	33
GIURGIU	4	0,43	25,4	0,16	7297,0	0,13	6066,5	0,13	23	14
GORJ	4	0,43	2,1	0,01	596,0	0,01	495,5	0,01	23	29
HARGHITA	10	1,07	16,2	0,10	5808,0	0,11	4828,6	0,11	17	17
HUNEDOARA	13	1,39	9,1	0,06	70,0	***	58,2	***	14	39
IALOMITA	5	0,53	15,4	0,10	70,0	***	58,2	***	22	39
IASI	13	1,39	77,0	0,49	25540,0	0,46	21233,1	0,46	14	11
MARAMURES	12	1,28	2,0	0,01	682,0	0,01	567,0	0,01	15	28
MEHEDINTI	6	0,64	2,0	0,01	685,0	0,01	569,5	0,01	21	27
MURES	21	2,24	1717,7	10,93	597281,0	10,87	496559,3	10,87	11	2
NEAMT	8	0,85	17,0	0,11	5576,0	0,10	4635,7	0,10	19	18
OLT	3	0,32	0,5	***	106,0	***	88,1	***	24	37
PRAHOVA	22	2,35	130,8	0,83	45946,0	0,84	38198,0	0,84	10	9
SALAJ	9	0,96	3,2	0,02	1131,0	0,02	940,3	0,02	18	23
SATU MARE	18	1,92	24,9	0,16	7255,0	0,13	6031,6	0,13	12	15
SIBIU	29	3,10	137,7	0,88	47262,0	0,86	39292,0	0,86	8	8
SUCEAVA	7	0,75	1,6	0,01	552,0	0,01	458,9	0,01	20	32
TELEORMAN	4	0,43	2,3	0,01	791,0	0,01	657,6	0,01	23	25
TIMIS	70	7,48	184,1	1,17	64313,0	1,17	53467,7	1,17	2	7
TULCEA	1	0,11	0,2	***	72,0	***	59,9	***	26	38
VASLUI	2	0,21	1,1	***					25	40
VALCEA	4	0,43	1,5	***	155,0	***	128,9	***	23	36
VRANCEA	11	1,18	27,5	0,18	9532,0	0,17	7924,6	0,17	16	13
MUN. BUCURESTI	327	34,94	10535,9	67,07	3728102,0	67,87	3099418,2	67,87	1	1
ILFOV	34	3,63	1316,4	8,38	458215,0	8,34	380944,5	8,34	5	3

*) number of companies (column 1)

**) capital in equivalent currency (column3)

*** Less than 0.01%

Note: Empty rows reveal that there are no operation in the current month

Table no. 6

**Statutory increase of the issued capital,
in companies by foreign direct investment
during September 2005**

balance account at 30 April 2004	Number of companies		Amount of subscribed capital						Ranking by:	
			Total in local currency		Total in equivalent of currency		Total in equivalent of currency			
	No.	%	mii RON	%	USD	%	EURO	%		
0	1		2		3		4		5	
Total ROMANIA	748	100,00	758879,4	100,00	264503570,0	100,00	219899345,8	100,00	*	**
ALBA	13	1,74	1677,5	0,22	577936,0	0,22	480476,5	0,22	11	16
ARAD	25	3,34	12104,0	1,59	4332444,0	1,64	3601847,8	1,64	7	8
ARGES	11	1,47	1094,3	0,14	385424,0	0,15	320428,5	0,15	13	20
BACAU	5	0,67	420,7	0,06	131257,0	0,05	109122,6	0,05	17	24
BIHOR	26	3,48	7589,8	1,00	2749097,0	1,04	2285506,5	1,04	6	9
BISTRITA-NASAUD	4	0,53	127,4	0,02	9202,0	***	7650,2	***	18	34
BOTOSANI	3	0,40	5,1	***	1767,0	***	1469,0	***	19	36
BRASOV	23	3,07	6990,2	0,92	2452834,0	0,93	2039203,4	0,93	8	10
BRAILA	7	0,94	293,4	0,04	95175,0	0,04	79125,3	0,04	15	25
BUZAU	12	1,60	3872,3	0,51	1762812,0	0,67	1465542,4	0,67	12	12
CARAS-SEVERIN	7	0,94	35,0	***	10361,0	***	8613,8	***	15	33
CALARASI	2	0,27	37,3	***	13151,0	***	10933,3	***	20	32
CLUJ	33	4,41	59194,4	7,80	20878074,0	7,89	17357326,5	7,89	5	5
CONSTANTA	46	6,15	1419,1	0,19	479160,0	0,18	398357,5	0,18	3	17
COVASNA	8	1,07	77,2	0,01	25212,0	***	20960,4	***	14	30
DAMBOVITA	3	0,40	50,8	***	17670,0	***	14690,2	***	19	31
DOLJ	16	2,14	585,3	0,08	204992,0	0,08	170423,4	0,08	10	22
GALATI	6	0,80	177,8	0,02	62662,0	0,02	52095,1	0,02	16	26
GIURGIU	2	0,27	2,3	***	819,0	***	680,9	***	20	37
GORJ	3	0,40	150,0	0,02	49982,0	0,02	41553,3	0,02	19	27
HARGHITA	8	1,07	1174,5	0,15	409200,0	0,15	340195,1	0,15	14	19
HUNEDOARA	7	0,94	3073,6	0,41	1094049,0	0,41	909555,4	0,41	15	13
IALOMITA										
IASI	12	1,60	938,0	0,12	426314,0	0,16	354423,1	0,16	12	18
MARAMURES	6	0,80	894,1	0,12	896451,0	0,34	745279,1	0,34	16	15
MEHEDINTI										
MURES	6	0,80	1272,3	0,17	251191,0	0,09	208831,7	0,09	16	21
NEAMT	6	0,80	537,3	0,07	174530,0	0,07	145098,4	0,07	16	23
OLT	8	1,07	164325,9	21,65	57385285,0	21,70	47708190,2	21,70	14	2
PRAHOVA	17	2,27	27832,6	3,67	9909178,0	3,75	8238156,3	3,75	9	6
SALAJ	2	0,27	1,0	***	357,0	***	296,8	***	20	38
SATU MARE	11	1,47	2112,2	0,28	937614,0	0,35	779500,7	0,35	13	14
SIBIU	13	1,74	13806,0	1,82	4581198,0	1,73	3808653,5	1,73	11	7
SUCEAVA	5	0,67	132,6	0,02	47061,0	0,02	39124,9	0,02	17	28
TELEORMAN	3	0,40	12,5	***	4222,0	***	3510,0	***	19	35
TIMIS	47	6,28	7291,0	0,96	2380393,0	0,90	1978978,4	0,90	2	11
TULCEA	3	0,40	1,0	***	334,0	***	277,7	***	19	39
VASLUI	2	0,27	106,6	0,01	36969,0	0,01	30734,8	0,01	20	29
VALCEA	7	0,94	308236,6	40,62	105016073,0	39,70	87306820,7	39,70	15	1
VRANCEA										
MUN. BUCURESTI	293	39,17	65912,1	8,69	24686625,0	9,33	20523627,3	9,33	1	3
ILFOV	37	4,95	65315,8	8,61	22026495,0	8,33	18312084,9	8,33	4	4

*) number of companies (column 1)

**) capital in equivalent currency (column3)

*** Less than 0.01%

Note: Empty rows reveal that there are no operation in the current month

Table no. 7

**Strike-off of companies by foreign direct investment,
from the trade register, during September 2005**

balance account at 30 April 2004	Number of companies		Amount of subscribed capital						Ranking by:	
			Total in local currency		Total in equivalent of currency		Total in equivalent of currency			
	No.	%	mii RON	%	USD	%	EURO	%		
0	1		2		3		4		5	
Total ROMANIA	102	100,0	6827,3	100,0	3207374,0	100,0	2666502,6	100,0	*	**
ALBA	3	2,94	4,0	0,06	1333,0	0,04	1108,2	0,04	5	19
ARAD	1	0,98	0,2	***	70,0	***	58,2	***	7	27
ARGES										
BACAU	3	2,94	81,1	1,19	20136,0	0,63	16740,4	0,63	5	10
at 31 December 2003	10	9,80	25,2	0,37	120331,0	3,75	100039,1	3,75	2	4
BISTRITA-NASAUD										
BOTOSANI	2	1,96	18,2	0,27	101730,0	3,17	84574,9	3,17	6	5
BRASOV	1	0,98	0,7	***	235,0	***	195,4	***	7	22
BRAILA	2	1,96	1,3	0,02	568,0	0,02	472,2	0,02	6	21
BUZAU										
CARAS-SEVERIN	2	1,96	7,0	0,10	25299,0	0,79	21032,7	0,79	6	9
CALARASI										
CLUJ	4	3,92	49,7	0,73	16265,0	0,51	13522,2	0,51	4	11
CONSTANTA										
COVASNA										
DAMBOVITA	2	1,96	48,9	0,72	43457,0	1,35	36128,7	1,35	6	8
DOLJ	2	1,96	3,0	0,04	11950,0	0,37	9934,8	0,37	6	13
GALATI	3	2,94	650,8	9,53	219927,0	6,86	182839,9	6,86	5	3
GIURGIU										
GORJ										
HARGHITA	3	2,94	3,1	0,05	1209,0	0,04	1005,1	0,04	5	20
HUNEDOARA	4	3,92	5,2	0,08	1813,0	0,06	1507,3	0,06	4	18
IALOMITA										
IASI	1	0,98	30,0	0,44	9317,0	0,29	7745,8	0,29	7	14
MARAMURES	2	1,96	0,5	***	201,0	***	167,1	***	6	23
MEHEDINTI	1	0,98	0,2	***	101,0	***	84,0	***	7	25
MURES	3	2,94	0,3	***	2796,0	0,09	2324,5	0,09	5	17
NEAMT	1	0,98	0,2	***	73,0	***	60,7	***	7	26
OLT	1	0,98	53,2	0,78	16162,0	0,50	13436,5	0,50	7	12
PRAHOVA	1	0,98	0,2	***	73,0	***	60,7	***	7	26
SALAJ										
SATU MARE	1	0,98	2,3	0,03	8072,0	0,25	6710,8	0,25	7	15
SIBIU	3	2,94	6,0	0,09	3031,0	0,09	2519,9	0,09	5	16
SUCEAVA										
TELEORMAN	1	0,98	20,3	0,30	64158,0	2,00	53338,8	2,00	7	6
TIMIS	3	2,94	165,3	2,42	49878,0	1,56	41466,9	1,56	5	7
TULCEA										
VASLUI										
VALCEA	1	0,98	0,5	***	150,0	***	124,7	***	7	24
VRANCEA										
MUN. BUCURESTI	36	35,29	3332,5	48,81	1784091,0	55,62	1483233,1	55,62	1	1
ILFOV	5	4,90	2317,4	33,94	704948,0	21,98	586070,0	21,98	3	2

*) number of companies (column 1)

**) capital in equivalent currency (column3)

*** Less than 0.01%

Note: Empty rows reveal that there are no operation in the current month

Table no. 8

**Changes by cession in the issued capital
of the companies by foreign direct investment,
during September 2005**

balance account at 30 April 2004	Number of companies		Amount of subscribed capital						Ranking by:	
			Total in local currency		Total in equivalent of currency		Total in equivalent of currency			
	No.	%	mii RON	%	USD	%	EURO	%	5	
0	1		2		3		4		5	
Total ROMANIA	493	100,0	326920,3	100,0	103371901	100,0	85939912	100,0	*	**
ALBA	9	1,8	19,3	***	14791	0,01	12297	0,01	10	18
ARAD	20	4,1	3185,7	0,97	1289870	1,25	1072354	1,25	6	4
ARGES	8	1,6	13,4	***	4495,0	***	3737,0	***	11	22
BACAU	2	0,4	332,6	0,10	100018	0,10	83152	0,10	16	9
at 31 December 2003	18	3,7	536,6	0,16	251204	0,24	208843	0,24	7	6
BISTRITA-NASAUD										
BOTOSANI	1	0,2	0,1	***	39	***	32	***	17	30
BRASOV	17	3,4	473,4	0,14	172675	0,17	143556	0,17	8	7
BRAILA	4	0,8	202,1	0,06	62913	0,06	52304	0,06	14	11
BUZAU	8	1,6	6245,0	1,91	2086187	2,02	1734385	2,02	11	2
CARAS-SEVERIN	8	1,6	2,1	***	34240	0,03	28466	0,03	11	16
CALARASI	2	0,4	4,4	***	10299	***	8562	***	16	19
CLUJ	22	4,5	27,7	0,01	62234	0,06	51739	0,06	5	37
CONSTANTA	29	5,9	134,8	0,04	72926	0,07	60628	0,07	4	10
COVASNA	6	1,2	3,7	***	1091	***	907	***	12	23
DAMBOVITA										
DOLJ	10	2,0	850,6	0,26	270568	0,26	224941	0,26	9	38
GALATI	3	0,6	0,2	***	74	***	62	***	15	29
GIURGIU	1	0,2	0,0	***	10	***	8	***	17	32
GORJ	3	0,6	0,5	***	163	***	136	***	15	26
HARGHITA	4	0,8	5,0	0,00	7712	***	6411	***	14	20
HUNEDOARA	4	0,8	0,2	0,00	53	0,00	44	0,00	14	34
IALOMITA	1	0,2	186,8	0,06	54800	0,05	45559	0,05	17	36
IASI	10	2,0	96,9	0,03	48856	0,05	40617	0,05	9	12
MARAMURES	3	0,6	1,3	***	340	***	283	***	15	25
MEHEDINTI	1	0,2	0,0	***	13	***	11	***	17	31
MURES	6	1,2	3,3	***	1063	***	884	***	12	24
NEAMT	4	0,8	24,0	***	7089	***	5894	***	14	21
OLT	5	1,0	3,6	***	20242	0,02	16829	0,02	13	17
PRAHOVA	9	1,8	321,2	0,10	102388	0,10	85122	0,10	10	8
SALAJ										
SATU MARE	8	1,6	107,9	0,03	36613	0,04	30439	0,04	11	14
SIBIU	9	1,8	4843,8	1,48	1541608	1,49	1281641	1,49	10	3
SUCEAVA	4	0,8	133,9	0,04	40629	0,04	33778	0,04	14	13
TELEORMAN	5	1,0	0,7	0,00	160	0,00	133	0,00	13	35
TIMIS	31	6,3	1810,6	0,55	580012	0,56	482202	0,56	3	5
TULCEA	2	0,4	0,4	***	138	***	115	***	16	27
VASLUI	3	0,6	106,9	0,03	36102	0,03	30014	0,03	15	15
VALCEA	1	0,2	307969,2	94,20	105005012	101,58	87297625	101,58	17	1
VRANCEA	1	0,2	0,2	***	76	***	63	***	17	28
MUN. BUCURESTI	168	34,1	3730,7	1,14	7179478	6,95	5968776	6,95	1	40
ILFOV	43	8,7	2316,8	0,71	589694	0,57	490252	0,57	2	39

*) number of companies (column 1)

**) capital in equivalent currency (column 3)

*** Less than 0,01%

Note: Empty rows reveal that there are no operation in the current month

Table no. 9

**Incorporation of companies by foreign direct investment,
according to the development regions,
during September 2005**

Development regions	Number of companies		Amount of subscribed capital						Ranking by:	
			Total in local currency		Total in equivalent of currency		Total in equivalent of currency			
	No.	%	mii RON	%	USD	%	EURO	%		
0	1		2		3		4		5	
Total ROMANIA	936	100,0	15708,2	100,0	5492631,0	100,0	4566388,1	100,0	*	**
NORTH-EAST	47	5,0	99,9	0,6	32651,0	0,6	27144,9	0,6	6	6
SOUTH-EAST	63	6,7	61,8	0,4	16325,0	0,3	13572,1	0,3	4	7
SOUTH-MUNTENIA	60	6,4	222,0	1,4	71161,0	1,3	59160,9	1,3	5	4
SOUTH-WEST OLTENIA	29	3,1	17,2	0,1	5327,0	0,1	4428,7	0,1	7	8
WEST	134	14,3	448,4	2,9	154412,0	2,8	128372,9	2,8	2	3
at 31 December 2003	121	12,9	196,9	1,3	55440,0	1,0	46090,9	1,0	3	5
CENTER	121	12,9	2809,7	17,9	970998,0	17,7	807255,0	17,7	3	2
BUCHAREST-ILFOV	361	38,6	11852,3	75,5	4186317,0	76,2	3480362,7	76,2	1	1

Table no. 10

**Statutory increase in the issued capital of companies by
foreign direct investment, according to the development regions,
during September 2005**

Development regions	Number of companies		Amount of subscribed capital						Ranking by:	
			Total in local currency		Total in equivalent of currency		Total in equivalent of currency			
	No.	%	million ROL	%	USD	%	EURO	%		
0	1		2		3		4		5	
Total ROMANIA	748	100,0	758879,4	100,0	264503570,0	100,0	219899345,8	100,0	*	**
NORTH-EAST	33	4,4	2140,4	0,3	817898,0	0,3	679972,8	0,3	8	8
SOUTH-EAST	74	9,9	5763,5	0,8	2400143,0	0,9	1995397,9	0,9	4	7
SOUTH-MUNTENIA	38	5,1	29029,8	3,8	10330464,0	3,9	8588399,3	3,9	6	4
SOUTH-WEST OLTENIA	34	4,5	473297,8	62,4	162656332,0	61,5	135226987,6	61,5	7	1
WEST	86	11,5	22503,5	3,0	7817247,0	3,0	6498995,5	3,0	2	6
NORTH-WEST	82	11,0	69918,9	9,2	25470795,0	9,6	21175559,8	9,6	3	3
CENTER	71	9,5	24997,7	3,3	8297571,0	3,1	6898320,6	3,1	5	5
BUCHAREST-ILFOV	330	44,1	131227,9	17,3	46713120,0	17,7	38835712,2	17,7	1	2

Table no. 11

**Strike-off of companies by foreign direct investment and the amount
of their issued capital, according to the development regions,
during September 2005**

Development regions	Number of companies		Amount of subscribed capital						Ranking by:	
			Total in local currency		Total in equivalent of currency		Total in equivalent of currency			
	No.	%	million ROL	%	USD	%	EURO	%		
0	1		2		3		4		5	
Total ROMANIA	102	100,0	6827,3	100,0	3207374	100,0	2666503	100,0	*	**
NORTH-EAST	7	6,9	129,5	1,9	131256	4,1	109122	4,1	5	4
SOUTH-EAST	5	4,9	652,1	9,6	220495	6,9	183312	6,9	6	2
SOUTH-MUNTENIA	4	3,9	69,4	1,0	107688	3,4	89528	3,4	7	5
SOUTH-WEST OLTENIA	5	4,9	56,9	0,8	28363	0,9	23580	0,9	6	7
WEST	10	9,8	177,7	2,6	77060	2,4	64065	2,4	4	6
NORTH-WEST	17	16,7	77,7	1,1	144869	4,5	120439	4,5	2	3
CENTER	13	12,7	14,1	0,2	8604	0,3	7153	0,3	3	8
BUCHAREST-ILFOV	41	40,2	5649,9	82,8	2489039	77,6	2069303	77,6	1	1

*) number of companies (column 1)

**) total issued capital, in equivalent of currency (column3)

*** Less than 0.01%

Table no. 12

**Incorporation of companies by foreign direct investment, by continents
according to the investors' country of origin,
during September 2005**

Continent	Number of companies		Amount of subscribed capital						Ranking by:	
			Total in local currency		Total in equivalent of currency		Total in equivalent of currency			
	No.	%	mii RON	%	USD	%	EURO	%		
0	1		2		3		4		5	
Total ROMANIA	936	100,0	15708,2	100,0	5492631,0	100,0	4566388,1	100,0	*	**
EUROPE	806	86,1	13062,8	83,2	4580188,0	83,4	3807813,8	83,4	1	1
AFRICA	7	0,7	2,0	0,0	615,0	0,0	511,3	0,0	6	6
NORTH AMERICA	36	3,8	508,9	3,2	174113,0	3,2	144751,7	3,2	3	3
SOUTH AMERICA	17	1,8	39,0	0,2	13376,0	0,2	11120,4	0,2	4	4
ASIA	103	11,0	2088,5	13,3	721901,0	13,1	600164,1	13,1	2	2
at 31 December 2003	8	0,9	7,0	0,0	2438,0	0,0	2026,9	0,0	5	5

Table no. 13

**Increase in the issued capital of companies by foreign direct investment,
by continents according to the investors' country of origin,
during September 2005**

Continent	Number of companies		Amount of subscribed capital						Ranking by:	
			Total in local currency		Total in equivalent of currency		Total in equivalent of currency			
	No.	%	million ROL	%	USD	%	EURO	%		
0	1		2		3		4		5	
Total ROMANIA	748	100,0	758879,4	100,0	264503570,0	100,0	219899345,8	100,0	*	**
EUROPE	555	74,2	707270,5	93,2	243751276,0	92,2	202646588,6	92,2	1	1
AFRICA	14	1,9	484,8	0,1	184458,0	0,1	153352,2	0,1	5	6
NORTH AMERICA	31	4,1	18171,8	2,4	6332308,0	2,4	5264467,3	2,4	3	3
SOUTH AMERICA	21	2,8	6343,1	0,8	3414563,0	1,3	2838752,5	1,3	4	4
ASIA	161	21,5	26071,8	3,4	10058468,0	3,8	8362271,0	3,8	2	2
OCEANIA	4	0,5	537,3	0,1	762497,0	0,3	633914,3	0,3	6	5

Table no. 14

**Strike-off of companies by foreign direct investment and their issued capital,
by continents according to the investors' country of origin,
during September 2005**

Continent	Number of companies		Amount of subscribed capital						Ranking by:	
			Total in local currency		Total in equivalent of currency		Total in equivalent of currency			
	No.	%	million ROL	%	USD	%	EURO	%		
0	1		2		3		4		5	
Total ROMANIA	102	100,0	6827,3	100,0	3207374	100,0	2666503	100,0	*	**
EUROPE	78	76,5	5826,9	85,3	2725727	85,0	2266077	85,0	1	1
NORTH AMERICA	2	2,0	18,5	0,3	101824	3,2	84653	3,2	4	3
NORTH AMERICA	3	2,9	32,6	0,5	10370	0,3	8621	0,3	3	4
ASIA	22	21,6	947,6	13,9	359453	11,2	298837	11,2	2	2

*) number of companies (column 1)

**) total issued capital, in equivalent of currency (column3)

*** Sub 0,01%

Note: Empty rows reveal that there are no operation in the current month

Table no. 15

**Incorporation of companies by foreign direct investment, by economical groups
of countries according to the investors' country of origin,
during September 2005**

Economical groups	Number of companies		Amount of subscribed capital						Ranking by:	
			Total in local currency		Total in equivalent of currency		Total in equivalent of currency			
	No.	%	mii RON	%	USD	%	EURO	%		
0	1		2		3		4		5	
Total ROMANIA	936		15708,2		5492631		4566388		*	**
E.U.	602	64,3	11280,8	71,8	3962678	72,1	3294437	72,1	2	2
E.A.F.T.A.	12	1,3	454,2	2,9	159747	2,9	132808	2,9	4	4
O.E.C.D.	774	82,7	13306,0	84,7	4660599	84,9	3874665	84,9	1	1
at 31 December 2003	72	7,7	944,5	6,0	325845	5,9	270897	5,9	3	3

Table no. 16

**Increase in the issued capital of companies by foreign direct investment,
by economical groups of countries according to the investors' country of origin,
during September 2005**

Economical groups	Number of companies		Amount of subscribed capital						Ranking by:	
			Total in local currency		Total in equivalent of currency		Total in equivalent of currency			
	No.	%	million ROL	%	USD	%	EURO	%		
0	1		2		3		4		5	
Total ROMANIA	748		758879,4		264503570,0		219899345,8		*	**
E.U.	364	48,7	623401,2	82,1	214254660,0	81,0	178124097,0	81,0	2	2
E.A.F.T.A.	18	2,4	64974,6	8,6	23050922,0	8,7	19163759,0	8,7	4	3
O.E.C.D.	528	70,6	715535,0	94,3	246484383,0	93,2	204918801,5	93,2	1	1
C.E.F.T.A.	36	4,8	2895,6	0,4	1022074,0	0,4	849717,8	0,4	3	4

Table no. 17

**Strike-off of companies by foreign direct investment and their issued capital,
by economical groups of countries according to the investors' country of origin,
during September 2005**

Economical groups	Number of companies		Amount of subscribed capital						Ranking by:	
			Total in local currency		Total in equivalent of currency		Total in equivalent of currency			
	No.	%	million ROL	%	USD	%	EURO	%		
0	1		2		3		4		5	
Total ROMANIA	102		6827,3		3207374		2666503		*	**
E.U.	53	52,0	4362,5	63,9	2168613	67,6	1802912	67,6	2	2
E.A.F.T.A.	3	2,9	82,0	1,2	20576	0,6	17106	0,6	4	3
O.E.C.D.	77	75,5	5166,2	75,7	2527636	78,8	2101391	78,8	1	1
C.E.F.T.A.	7	6,9	17,5	0,3	5564	0,2	4626	0,2	3	4

*) number of companies (column 1)

**) total issued capital, in equivalent of currency (column 3)

*** Less than 0.01%

Note: Each economic group's weight is calculated related to the total Romania.

The weights' sum is different from 100% due to the fact that one country might be part of more than one economical group.

Table no. 18

**Classification* by countries of origin of investors
in companies by foreign direct investment,
incorporated during September 2005**

No. crt.	Countries	Number of companies		Amount of subscribed capital					
				Total in local currency		Total in equivalent of currency		Total in equivalent of currency	
				No.	%	mii RON	%	USD	%
0	1	2		3		4		5	
	Total ROMANIA, out of which:	936	100,0	15708,2	100,0	5492631,0	100,0	4566388,1	100,0
1	GREAT BRITAIN	21	2,2	5393,0	34,33	1925889,0	35,06	1601119,1	35,06
2	ITALY	228	24,4	2527,8	16,09	873082,0	15,90	725850,9	15,90
3	GERMANY	123	13,1	1302,4	8,29	454375,0	8,27	377752,0	8,27
4	HUNGARY	56	6,0	895,2	5,70	308919,0	5,62	256824,8	5,62
5	IRAQ	5	0,5	770,8	4,91	266588,0	4,85	221632,3	4,85
6	LEBANON	13	1,4	764,6	4,87	265122,0	4,83	220413,5	4,83
7	FRANCE	58	6,2	669,4	4,26	235855,0	4,29	196081,9	4,29
8	NETHERLAND	27	2,9	549,7	3,50	190228,0	3,46	158149,1	3,46
9	U.S.A.	36	3,8	508,9	3,24	174113,0	3,17	144751,7	3,17
10	CHINA	24	2,6	487,1	3,10	167376,0	3,05	139150,8	3,05
11	SWITZERLAND	11	1,2	454,0	2,89	159675,0	2,91	132748,4	2,91
12	SWEDEN	7	0,7	358,5	2,28	121525,0	2,21	101031,8	2,21
13	CYPRUS	40	4,3	240,1	1,53	85258,0	1,55	70880,6	1,55
14	AUSTRIA	36	3,8	166,0	1,06	56716,0	1,03	47151,8	1,03
15	GREECE	29	3,1	141,1	0,90	48955,0	0,89	40699,5	0,89
16	SPAIN	32	3,4	85,0	0,54	29995,0	0,55	24936,8	0,55
17	TURKEY	41	4,4	91,7	0,58	29355,0	0,53	24404,8	0,53
18	BELGIUM	26	2,8	81,3	0,52	24244,0	0,44	20155,6	0,44
19	IRAN	6	0,6	41,5	0,26	14456,0	0,26	12018,2	0,26
20	CZECH REPUBLIC	1	0,1	35,0	0,22	12000,0	0,22	9976,4	0,22
21	MONACO	2	0,2	29,1	0,19	10334,0	0,19	8591,3	0,19
22	CANADA	7	0,7	20,6	0,13	7107,0	0,13	5908,5	0,13
23	I.VIRGINE BRIT.	6	0,6	17,8	0,11	6029,0	0,11	5012,3	0,11
24	MOLDAVIA	27	2,9	19,5	0,12	5953,0	0,11	4949,1	0,11
25	ISRAEL	36	3,8	12,3	0,08	4213,0	0,08	3502,5	0,08
26	POLAND	4	0,4	10,4	0,07	3562,0	0,06	2961,3	0,06
27	NEW ZEELAND	1	0,1	5,0	0,03	1750,0	0,03	1454,9	0,03
28	PHILIPPINES	1	0,1	5,0	0,03	1736,0	0,03	1443,3	0,03
29	LUXEMBOURG	10	1,1	5,2	0,03	1503,0	0,03	1249,5	0,03
30	SLOVAKIA	3	0,3	2,4	0,01	817,0	0,01	679,2	0,01
31	JORDAN	3	0,3	2,3	0,01	792,0	0,01	658,4	0,01
32	AUSTRALIA	7	0,7	2,0	0,01	688,0	0,01	572,0	0,01
33	BULGARIA	7	0,7	1,4	***	476,0	***	395,7	***
34	A.R. OF SYRIA	5	0,5	1,3	***	450,0	***	374,1	***
35	JAPAN	3	0,3	1,3	***	396,0	***	329,2	***
36	EGYPT	2	0,2	1,1	***	376,0	***	312,6	***
37	LATVIA	1	0,1	1,0	***	356,0	***	296,0	***
38	PAKISTAN	1	0,1	1,0	***	347,0	***	288,5	***
39	SOUTH KOREA	3	0,3	0,9	***	250,0	***	207,8	***
40	FORMER YUGOSLAVIE	3	0,3	0,6	***	214,0	***	177,9	***

*) on countries selected upon the amount of the foreign direct investment, in equivalent of currency, ranking by a descending scale (col 4)

*** Less than 0.01%

Table no. 19

**Classification* by investors' countries of origin according to the amount
of the increase in the issued capital, during September 2005**

No. crt.	Countries	Number of companies		Amount of subscribed capital					
				Total in local currency		Total in equivalent of currency		Total in equivalent of currency	
		No.	%	mii RON	%	USD	%	EURO	%
0	1	2	3		4		5		
	Total ROMANIA	748	100,0	758879,4	100,0	264503570,0	100,0	219899345,8	100,0
1	ITALY	20	2,67	163231,6	21,51	57003483,0	21,551	47390772,9	21,551
2	NETHERLAND	15	2,01	54965,7	7,24	19477539,0	7,36	16192968,9	7,36
3	SWITZERLAND	58	7,75	43024,7	5,67	14612944,0	5,52	12148708,7	5,52
4	GERMANY	19	2,54	31175,3	4,11	11034953,0	4,17	9174087,7	4,17
5	AUSTRIA	21	2,81	22266,0	2,93	6945888,0	2,63	5774577,0	2,63
6	GREAT BRITAIN	31	4,14	18171,8	2,39	6332308,0	2,39	5264467,3	2,39
7	U.S.A.	59	7,89	11806,7	1,56	4657799,0	1,76	3872337,0	1,76
8	CHINA	3	0,40	10008,9	1,32	3573383,0	1,35	2970790,1	1,35
9	LIECHTENSTEIN	76	10,16	9627,4	1,27	3305035,0	1,25	2747694,6	1,25
10	TURKEY	7	0,94	9081,3	1,20	3007238,0	1,14	2500116,2	1,14
11	LUXEMBOURG	5	0,67	5656,3	0,75	2023010,0	0,76	1681862,3	0,76
12	SWEDEN	17	2,27	5257,8	0,69	1731340,0	0,65	1439377,7	0,65
13	CYPRUS	1	0,13	341,0	0,04	1320169,0	0,50	1097544,0	0,50
14	COSTA RICA	19	2,54	2386,6	0,31	1231113,0	0,47	1023505,8	0,47
15	A.R. OF SYRIA	3	0,40	3811,6	0,50	1175817,0	0,44	977534,6	0,44
16	JAPAN	31	4,14	2842,0	0,37	1004730,0	0,38	835298,6	0,38
17	HUNGARY	2	0,27	2673,9	0,35	920966,0	0,35	765660,1	0,35
18	CANADA	1	0,13	2430,0	0,32	857536,0	0,32	712926,5	0,32
19	TAIWAN	13	1,74	2490,3	0,33	843437,0	0,32	701205,1	0,32
20	GREECE	1	0,13	536,1	0,07	762100,0	0,29	633584,2	0,29
21	BERMUDE ISLANDS	1	0,13	2047,4	0,27	732339,0	0,28	608841,9	0,28
22	PHILIPPINES	12	1,60	1683,8	0,22	584470,0	0,22	485908,6	0,22
23	I.VIRGINE BRIT.	1	0,13	1565,7	0,21	545491,0	0,21	453502,8	0,21
24	CAYMAN ISLANDS	20	2,67	1489,4	0,20	505633,0	0,19	420366,2	0,19
25	SPAIN	16	2,14	1006,1	0,13	361558,0	0,14	300587,1	0,14
26	IRAN	2	0,27	969,4	0,13	334916,0	0,13	278437,9	0,13
27	PORTUGAL	7	0,94	709,8	0,09	252858,0	0,10	210217,6	0,10
28	IRAQ	29	3,88	709,1	0,09	247062,0	0,09	205399,0	0,09
29	ISRAEL	28	3,74	734,2	0,10	246752,0	0,09	205141,3	0,09
30	MOLDAVIA	15	2,01	638,9	0,08	227919,0	0,09	189484,2	0,09
31	LEBANON	23	3,07	609,4	0,08	210380,0	0,08	174902,8	0,08
32	FRANCE	3	0,40	322,7	0,04	172230,0	0,07	143186,2	0,07
33	JORDAN	2	0,27	79,4	0,01	90721,0	0,03	75422,4	0,03
34	PAKISTAN	1	0,13	247,6	0,03	87221,0	0,03	72512,6	0,03
35	MONACO	3	0,40	178,3	0,02	60109,0	0,02	49972,6	0,02
36	EGYPT	2	0,27	121,7	0,02	49936,0	0,02	41515,1	0,02
37	SUDAN	8	1,07	104,4	0,01	46415,0	0,02	38587,9	0,02
38	SOMALIA	2	0,27	73,1	***	34237,0	0,01	28463,5	0,01
39	VIETNAM	1	0,13	90,0	0,01	31760,0	0,01	26404,2	0,01
40	MACEDONIA	1	0,13	80,5	0,01	27998,0	0,01	23276,6	0,01
41	TUNISIA	1	0,13	17,3	***	21838,0	***	18155,4	***
42	BELIZE	3	0,40	24,3	***	15035,0	***	12499,6	***
43	FORMER YUGOSLAVIE	2	0,27	40,3	***	14334,0	***	11916,8	***
44	PANAMA	1	0,13	40,0	***	13950,0	***	11597,6	***
45	PALESTINA	1	0,13	40,0	***	12510,0	***	10400,4	***
46	POLAND	1	0,13	20,9	***	7268,0	***	6042,4	***
47	I.TURKS AND CAICOS	3	0,40	13,5	***	4813,0	***	4001,4	***
48	BULGARIA	8	1,07	12,6	***	4340,0	***	3608,1	***
49	BELGIUM	1	0,13	9,8	***	2740,0	***	2277,9	***
50	HONG KONG								

*) on countries selected upon the amount of the foreign direct investment, in equivalent of currency, ranking by a descending scale (col 4)

*** Less than 0,01%

**Classification of the top 40 companies by foreign direct investment
in the total subscribed capital, in equivalent of currency,
during September 2005**

No. crt.	Companies	County	Country of origin of the majority investor	Amount of subscribed capital		
				Total in local currency	Total in equivalent of currency	Total in equivalent of currency
				mii RON	thousand USD	thousand EURO
0	1	2	3	4	5	6
1	ALRO SA	OLT	OLANDA	139808,9	48742,8	40523,1
2	MECHEL CAMPIA TURZII SA	CLUJ	ELVETIA	49409,8	17436,5	14496,1
3	PIRELLI TYRES ROMANIA SRL	OLT	OLANDA	24340,4	8589,6	7141,1
4	UNICREDIT LEASING ROMANIA	BUCURESTI	ITALIA	24863,3	8394,8	6979,2
5	PLUS DISCOUNT ROMANIA SCS	ILFOV	GERMANIA	21149,1	7432,6	6179,2
6	PARK INDUSTRIE DACIA SRL	PRAHOVA	AUSTRIA	17430,0	6200,9	5155,2
7	EUREX ALIMENTARE SRL	ILFOV	MAREA BRITANIE	19583,0	6009,4	6009,4
8	ALINE DISTRIBUTION GRUP SRL	ILFOV	S.U.A.	15749,1	5495,1	4568,4
9	SIAD ROMANIA SRL	BUCURESTI	ITALIA	14288,0	4953,2	4117,9
10	GERRY WEBER SUPPORT SRL	BUCURESTI	GERMANIA	10841,4	3668,7	3050,0
11	EUROAVIPO GRUP SRL	PRAHOVA	LIECHTENSTEIN	10000,0	3570,3	2968,2
12	COFICAB EASTERN EUROPE SRL	ARAD	LUXEMBURG	9000,0	2978,6	2476,3
13	SOMAREST SRL	SIBIU	ITALIA	7054,4	2398,6	1994,1
14	ADA FABRICA DE MOBILA SRL	BIHOR	AUSTRIA	6000,0	2142,9	1781,5
15	SCANIA ROMANIA SRL	ILFOV	SUEDIA	5583,8	1997,3	1660,5
16	BALKAN PETROLEUM SA	BUCURESTI	MAREA BRITANIE	5488,0	1960,0	1629,5
17	SCHWARZMULLER ROMANIA SRL	BUCURESTI	AUSTRIA	5175,9	1852,0	1539,7
18	MECDRU SA	CLUJ	ELVETIA	4546,7	1605,6	1334,9
19	ROMRADIATOARE SA	BRASOV	ITALIA	4120,5	1433,2	1191,5
20	GREENFIBER INTERNATIONAL SA	BUZAU	TAIWAN	2970,0	1048,1	871,4
21	EUROSPORT DHS SA	HUNEDOARA	CHINA	2940,0	1047,6	871,0
22	EXPRES TRANSINTEX SRL	BUCURESTI	TURCIA	2756,1	960,9	798,8
23	DURA AUTOMOTIVE ROMANIA SRL	TIMIS	GERMANIA	2475,7	861,6	716,3
24	EXPLORER SA	MARAMURES	INS.BERMUDE	536,1	762,1	633,6
25	LANOBIS SRL	BRASOV	FILIPINE	2047,4	732,3	608,8
26	CONSUMER PRODUCT NETWORK SRL	BUCURESTI	CIPRU	2077,4	718,3	597,2
27	TEXTIL GROUP 2000 SRL	SATU MARE	ITALIA	1750,0	610,1	507,2
28	AMFIBOSWIN SRL	SIBIU	AUSTRIA	1736,8	590,7	491,1
29	UNO INTERNATIONAL EXIMP SRL	BUZAU	R. ARABA SIRIA	527,3	585,0	486,4
30	KESZ SRL	CLUJ	UNGARIA	1636,0	584,3	485,8
31	EMISSION CONTROL SA	BUCURESTI	I.VIRGINE BRIT.	1565,7	545,4	453,4
32	GARANTA ASIGURARI SA	BUCURESTI	GRECIA	1613,1	541,1	449,9
33	FIMATEX SRL	MURES	ITALIA	1494,3	517,7	430,4
34	PLASTIDRUM SRL	BUCURESTI	MAREA BRITANIE	1385,3	494,8	411,3
35	SOL-PLUS ROMANIA SRL	TIMIS	JAPONIA	1713,2	494,6	411,2
36	GRANDE ARREDO RO SRL	ALBA	ITALIA	1301,4	436,9	363,2
37	COMPANIA DE LEASING SI INVESTITII SA	BUCURESTI	S.U.A.	1219,6	418,2	347,7
38	REHI SRL	CLUJ	ITALIA	1199,5	410,8	341,5
39	ASTROM UNITED SA	BUCURESTI	TURCIA	1152,0	403,9	335,8
40	TECHNOSTEEL LBR SRL	IASI	ELVETIA	879,2	389,8	324,0

Table no. 21

**Number of registered companies with foreign investment capital
and amount of subscribed capital,
between 1991 and 2004**

balance account at 30 April 2004	Number of companies		Amount of subscribed capital					
			Total on ROL		Total on currency		Total on currency	
	No.	%	mii RON	%	thousands USD	%	thousands EURO	%
0	1		2		3		4	
1991 - 2004, out of which:	99847	100,0	25910410,9	100,0	12720574,6	100,0	10575456,7	100,0
1991	5158	5,2	256867,5	1,0	973988,3	7,7	809741,0	7,7
1992	11285	11,3	63289,9	0,2	563398,3	4,4	468390,3	4,4
1993	9869	9,9	87436,8	0,3	385855,1	3,0	320786,9	3,0
1994	9387	9,4	224349,9	0,9	851213,3	6,7	707670,1	6,7
1995	2510	2,5	64598,4	0,2	220785,7	1,7	183553,7	1,7
1996	2702	2,7	211292,7	0,8	511081,5	4,0	424895,9	4,0
1997	4489	4,5	186852,4	0,7	302623,8	2,4	251591,2	2,4
1998	8376	8,4	746043,2	2,9	789535,3	6,2	656393,0	6,2
1999	7028	7,0	1082520,4	4,2	1873298,4	14,7	1557397,1	14,7
2000	7922	7,9	1797346,0	6,9	753968,6	5,9	626824,1	5,9
2001	6796	6,8	4610104,2	17,8	202031,8	1,6	167962,4	1,6
2002	7451	7,5	3137118,1	12,1	887471,3	7,0	737813,7	7,0
2003	6599	6,6	4587302,5	17,7	1406545,3	11,1	1169354,3	11,1
2004	10275	10,3	8855288,8	34,2	2998778,1	23,6	2493082,9	23,6

Note: column no. 1 representing number of new registered from that time. The amount of subscribed capital is composed by initial subscribed capital added with any increase of capital and decreased with the subscribed capital of erased companies

Diagram no. 9

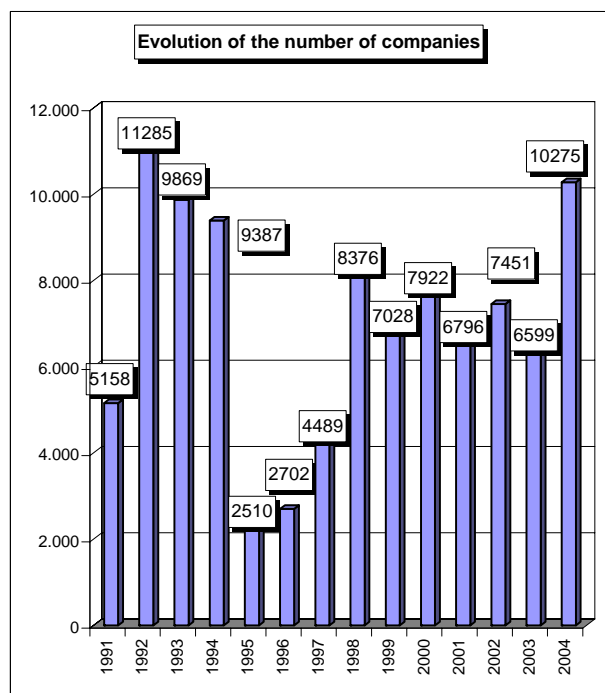


Diagram no. 10

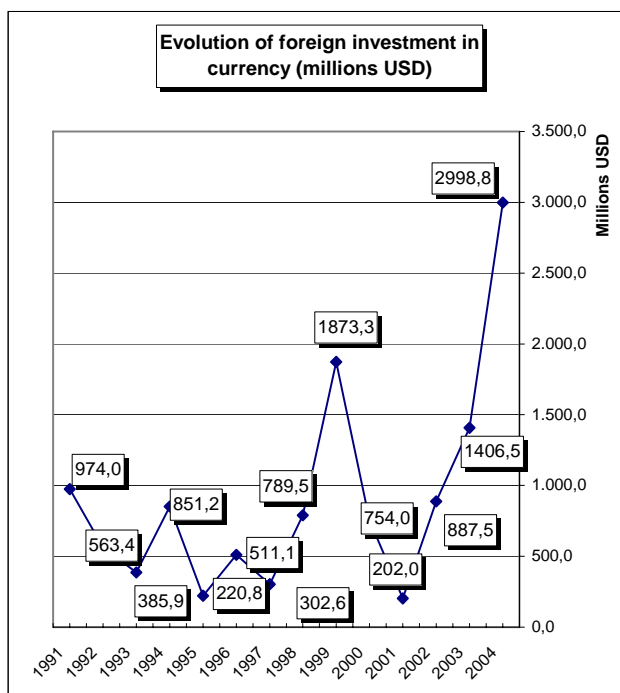


Table no. 22

**Number of registered companies, with foreign capital investment
and the value of the invested capital,
between 1991 and 2004**

balance account at 30 April 2004	Number of companies		Amount of subscribed capital						Order by:	
			Total on ROL		Total on currency		Total on currency			
	No.	%	mii RON	%	thousands USD	%	thousands EURO	%		
0	1		2		3		4		5	
Total ROMANIA	99847	100,0	25910410,9	100,0	12720574,6	100,0	10575456,7	100,0	*	**
ALBA	938	0,9	126042,8	0,5	56717,6	0,4	47153,1	0,4	17	24
ARAD	2861	2,9	234840,4	0,9	143096,0	1,1	118965,2	1,1	5	12
ARGES	870	0,9	2689341,3	10,4	894250,8	7,0	743450,0	7,0	19	3
BACAU	836	0,8	462046,1	1,8	134333,2	1,1	111680,1	1,1	20	14
BIHOR	2852	2,9	476939,2	1,8	205683,3	1,6	170998,2	1,6	6	10
BISTRITA-NASAUD	699	0,7	53639,2	0,2	23249,0	0,2	19328,4	0,2	23	36
BOTOSANI	278	0,3	12676,8	0,0	6037,6	0,0	5019,5	0,0	34	41
BRASOV	2753	2,8	506828,0	2,0	216083,8	1,7	179644,8	1,7	7	9
BRAILA	450	0,5	39943,7	0,2	26793,2	0,2	22275,0	0,2	28	33
BUZAU	531	0,5	92696,3	0,4	35927,9	0,3	29869,2	0,3	26	31
CARAS-SEVERIN	722	0,7	260800,2	1,0	115812,1	0,9	96282,3	0,9	22	15
CALARASI	262	0,3	141266,0	0,5	49332,4	0,4	41013,3	0,4	35	28
CLUJ	3739	3,7	564113,2	2,2	398108,5	3,1	330974,0	3,1	3	7
CONSTANTA	3415	3,4	1385424,9	5,3	514189,1	4,0	427479,5	4,0	4	5
COVASNA	578	0,6	50634,1	0,2	39634,7	0,3	32950,9	0,3	25	30
DAMBOVITA	492	0,5	431911,4	1,7	156820,9	1,2	130375,6	1,2	27	11
DOLJ	1205	1,2	63312,6	0,2	40623,0	0,3	33772,6	0,3	15	29
GALATI	766	0,8	2128519,1	8,2	694599,6	5,5	577466,7	5,5	21	4
GIURGIU	298	0,3	28709,0	0,1	12451,1	0,1	10351,4	0,1	33	39
GORJ	262	0,3	3952,9	0,0	2200,6	0,0	1829,5	0,0	35	42
HARGHITA	1416	1,4	90166,8	0,3	64421,0	0,5	53557,5	0,5	12	22
HUNEDOARA	938	0,9	122779,7	0,5	78386,9	0,6	65168,2	0,6	17	18
IALOMITA	243	0,2	15265,4	0,1	12046,5	0,1	10015,0	0,1	37	40
IASI	1341	1,3	81067,4	0,3	76375,3	0,6	63495,8	0,6	13	19
MARAMURES	1305	1,3	238711,2	0,9	93970,1	0,7	78123,6	0,7	14	17
MEHEDINTI	418	0,4	82214,8	0,3	30734,9	0,2	25551,9	0,2	30	32
MURES	1924	1,9	304136,0	1,2	139553,3	1,1	116019,9	1,1	10	13
NEAMT	681	0,7	82720,4	0,3	64118,4	0,5	53305,9	0,5	24	23
OLT	298	0,3	213247,5	0,8	74823,5	0,6	62205,8	0,6	33	20
PRAHOVA	1727	1,7	571885,3	2,2	363357,4	2,9	302083,1	2,9	11	8
SALAJ	357	0,4	37520,7	0,1	18941,7	0,1	15747,5	0,1	31	38
SATU MARE	1125	1,1	145052,0	0,6	73343,1	0,6	60975,0	0,6	16	21
SIBIU	2001	2,0	145312,6	0,6	109785,7	0,9	91272,2	0,9	9	16
SUCEAVA	872	0,9	81531,4	0,3	49457,5	0,4	41117,3	0,4	18	27
TELEORMAN	220	0,2	123234,0	0,5	52168,6	0,4	43371,2	0,4	38	25
TIMIS	6718	6,7	738185,4	2,8	468570,7	3,7	389553,9	3,7	2	6
TULCEA	250	0,3	59553,6	0,2	24130,7	0,2	20061,5	0,2		35
VASLUI	197	0,2	57390,9	0,2	24545,8	0,2	20406,5	0,2	39	34
VALCEA	431	0,4	52665,7	0,2	49635,5	0,4	41265,3	0,4	29	26
VRANCEA	336	0,3	13835,2	0,1	21505,6	0,2	17879,0	0,2	32	37
MUN. BUCURESTI	49839	49,9	10861239,1	41,9	5914201,0	46,5	4916867,2	46,5	1	1
ILFOV	2403	2,4	2039058,4	7,9	1150556,8	9,0	956534,1	9,0	8	2

*) number of companies

**) capital in equivalent currency

Table no. 23

**Number of registered companies, with foreign capital investment
and the value of the invested capital, on economic development areas,
between 1991 and 2004**

Economic development areas	Number of companies		Amount of subscribed capital						Order by:	
			Total on ROL		Total on currency		Total on currency			
	No.	%	mii RON	%	thousands USD	%	thousands EURO	%	5	
0	1		2		3		4		5	
Total ROMANIA	99847	100,0	25910410,9	100,0	12720574,6	100,0	10575456,7	100,0	*	**
NORTH-EAST	4205	4,2	777433,0	3,0	354867,8	2,8	295025,1	2,8	6	7
SOUTH-EAST	5748	5,8	3719973,0	14,4	1317146,2	10,4	1095030,9	10,4	5	3
SOUTH-MUNTENIA	4112	4,1	4001612,5	15,4	1540427,8	12,1	1280659,7	12,1	7	2
SOUTH-WEST OLTENIA	2614	2,6	415393,6	1,6	198017,5	1,6	164625,0	1,6	8	8
WEST	11239	11,3	1356605,7	5,2	805865,7	6,3	669969,6	6,3	2	5
at 31 December 2003	10077	10,1	1515975,4	5,9	813295,7	6,4	676146,6	6,4	3	4
CENTER	9610	9,6	1223120,3	4,7	626196,2	4,9	520598,4	4,9	4	6
BUCHAREST-ILFOV	52242	52,3	12900297,4	49,8	7064757,8	55,5	5873401,3	55,5	1	1

Table no. 24

**Number of registered companies, with foreign capital investment
and the value of the invested capital, on continents
between 1991 and 2004**

Continent	Number of companies		Amount of subscribed capital						Order by:	
			Total on ROL		Total on currency		Total on currency			
	No.	%	millions ROL	%	thousands USD	%	thousands EURO	%	5	
0	1		2		3		4		5	
Total ROMANIA	99847	100,0	25910410,9	100,0	12720574,6	100,0	10575456,7	100,0	*	**
NORTH-EAST	1	***	0,3	***	0,3	***	0,2	***	7	7
SOUTH-EAST	65248	65,3	20642677,4	79,7	10245523,1	80,5	8517782,3	80,5	1	1
SOUTH-MUNTENIA	1959	2,0	32401,6	0,1	33144,4	0,3	27555,2	0,3	4	6
SOUTH-WEST OLTENIA	3963	4,0	887987,2	3,4	753717,1	5,9	626614,9	5,9	3	2
WEST	1631	1,6	1165531,2	4,5	430388,8	3,4	357810,8	3,4	5	5
NORTH-WEST	30700	30,7	920539,6	3,6	537814,8	4,2	447121,1	4,2	2	4

Table no. 25

**Number of registered companies, with foreign capital investment
and the value of the invested capital, on economic groups,
between 1991 and 2004**

Economic groups	Number of companies		Amount of subscribed capital							
			Total on ROL		Total on currency		Total on currency			
	No.	%	millions ROL	%	thousands USD	%	thousands EURO	%	5	
0	1		2		3		4		5	
Total ROMANIA	99847		25910410,9		12720574,6		10575456,7		*	**
U.E.	44469	44,5	17766777,5	68,6	8270282,6	65,0	6875634,0	65,0	2	2
A.E.L.S.	1655	1,7	762455,4	2,9	491682,7	3,9	408768,4	3,9	4	3
O.E.C.D.	65247	65,3	20735823,2	80,0	10449448,4	82,1	8687318,9	82,1	1	1
C.E.F.T.A.	5954	6,0	670528,8	2,6	378942,6	3,0	315040,1	3,0	3	4

Note: Each economic group's weight is calculated in total Romania.

The weights sum is different from 100% because each country may be part of one or many economic groups

*) number of companies

**) capital in equivalent currency

*** Less than 0.01%

Percentage of companies with foreign investment, between 1991 and 2004, on fields of activity*

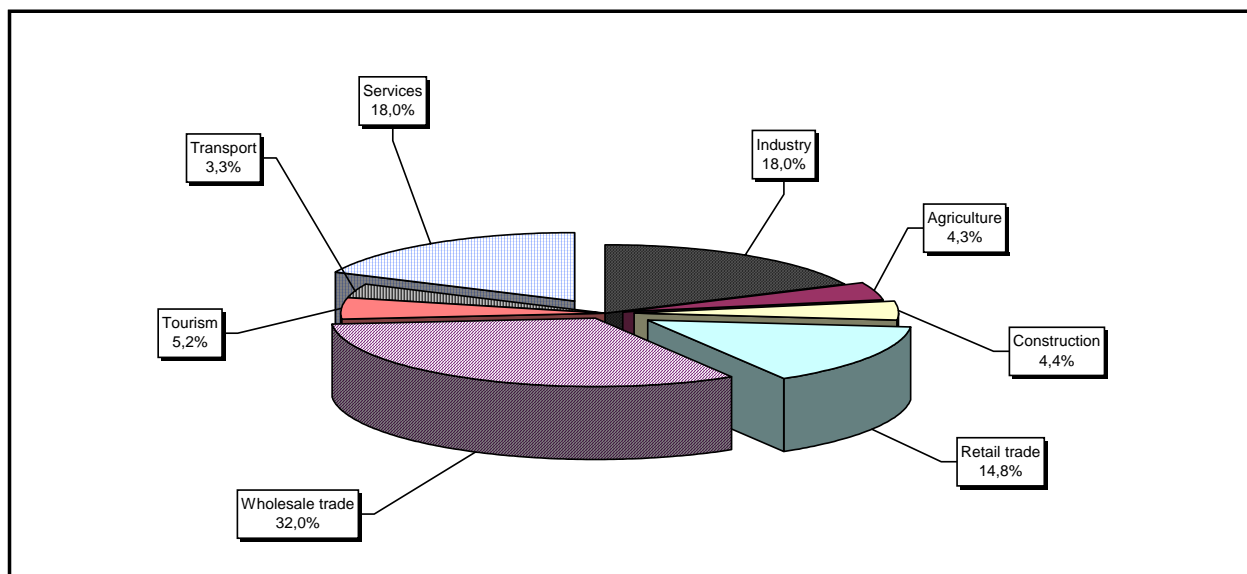
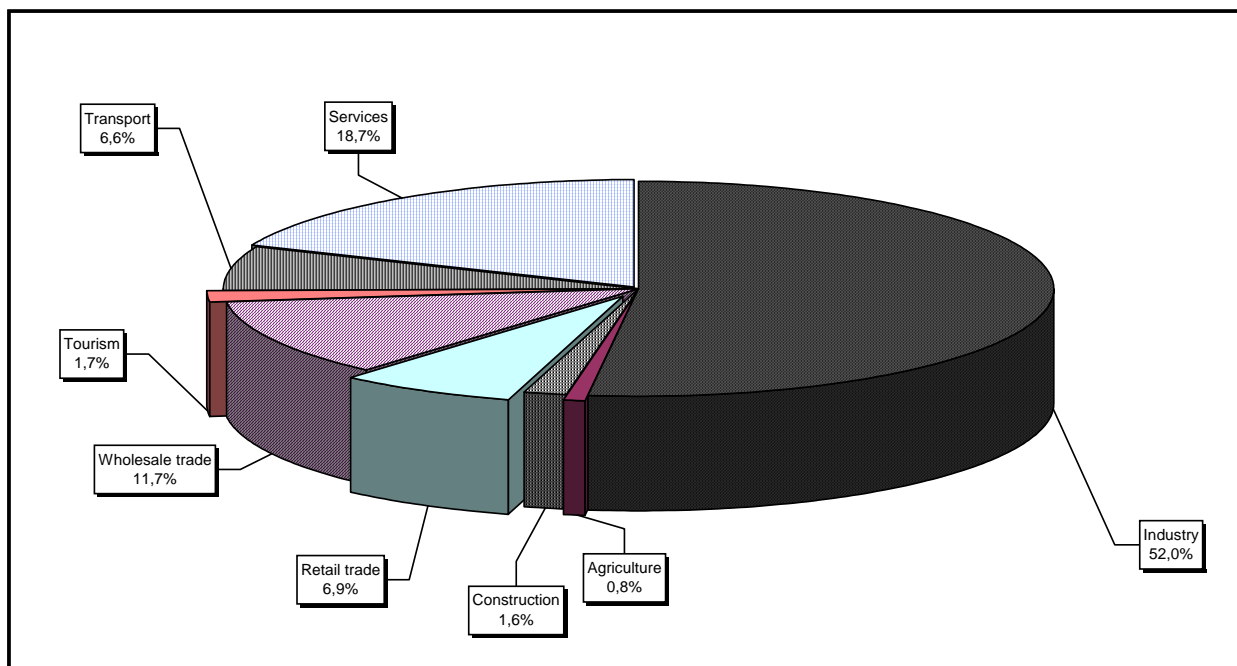


Diagram no. 12

Percentage of foreign currency invested capital** in companies with foreign investment, between 1991 and 2004, on fields of activity



*) Calculated on main activity

**) Calculated on the total amount in currency

Table no. 26

**Countries classification on foreign
investment capital registered
between 1991 and December 2004**

No. crt.	Countries	Number of companies		Amount of subscribed capital					
				Total on ROL		Total on currency		Total on currency	
		No.	%	mii RON	%	thousands USD	%	thousands EURO	%
0	1	2		3		4		5	
	Total ROMANIA, out of which:	99847	100,00	25910410,9	100,00	12720574,6	100,00	10575456,7	100,00
1	NETHERLAND	1932	1,93	4035449,7	15,57	1884741,8	14,82	1566910,7	14,82
2	AUSTRIA	3061	3,07	4421237,1	17,06	1665159,9	13,09	1384357,8	13,09
3	FRANCE	3454	3,46	3262619,7	12,59	1424880,5	11,20	1184597,6	11,20
4	GERMANY	11476	11,49	2160176,1	8,34	1102163,5	8,66	916301,6	8,66
5	U.S.A.	3963	3,97	887987,2	3,43	753717,1	5,93	626614,9	5,93
6	ITALY	16056	16,08	1118553,6	4,32	671474,8	5,28	558241,5	5,28
7	ANTILELE OLANDEZE	8	***	2080294,4	8,03	649835,9	5,11	540251,7	5,11
8	GREAT BRITAIN	1875	1,88	1252750,1	4,83	568161,1	4,47	472350,0	4,47
9	CYPRUS	1317	1,32	869513,8	3,36	521704,0	4,10	433727,1	4,10
10	TURKEY	8373	8,39	481972,9	1,86	439714,1	3,46	365563,5	3,46
11	SWITZERLAND	1343	1,35	645872,2	2,49	399937,3	3,14	332494,4	3,14
12	I.VIRGINE BRIT.	207	0,21	1094219,0	4,22	344150,1	2,71	286114,8	2,71
13	HUNGARY	4829	4,84	589478,2	2,28	333967,3	2,63	277649,2	2,63
14	GREECE	2744	2,75	532011,3	2,05	292157,3	2,30	242889,7	2,30
15	LUXEMBOURG	256	0,26	385562,9	1,49	249492,9	1,96	207420,0	1,96
16	SPAIN	836	0,84	144650,4	0,56	173693,0	1,37	144402,5	1,37
17	CHINA	7746	7,76	365487,9	1,41	150749,3	1,19	125327,9	1,19
18	SWEDEN	784	0,79	258618,9	1,00	104214,2	0,82	86640,2	0,82
19	BELGIUM	1286	1,29	108307,4	0,42	76303,6	0,60	63436,2	0,60
20	WITH OUT CITIZENSHIP	20	0,02	669,4	***	75425,4	0,59	62706,1	0,59
21	LIECHTENSTEIN	157	0,16	86634,8	0,33	70081,6	0,55	58263,4	0,55
22	JAPAN	156	0,16	182413,2	0,70	68706,7	0,54	57120,5	0,54
23	A.R. OF SYRIA	4859	4,87	72384,7	0,28	63039,4	0,50	52408,8	0,50
24	CANADA	984	0,99	46096,8	0,18	58036,4	0,46	48249,5	0,46
25	SOUTH KOREA	77	0,08	20376,8	0,08	57781,9	0,45	48037,9	0,45
26	LEBANON	3031	3,04	66210,7	0,26	44996,0	0,35	37408,2	0,35
27	IRAQ	5002	5,01	56100,7	0,22	44282,3	0,35	36814,8	0,35
28	MARSHALL ISLANDS	7	***	118762,6	0,46	35824,0	0,28	29782,9	0,28
29	ISRAEL	2804	2,81	34209,2	0,13	30686,6	0,24	25511,8	0,24
30	IRELAND	265	0,27	12724,0	0,05	22491,2	0,18	18698,4	0,18
31	FORMER YUGOSLAVIE	700	0,70	9186,3	0,04	22233,1	0,17	18483,9	0,17
32	DENMARK	276	0,28	46933,1	0,18	20081,0	0,16	16694,7	0,16
33	IRAN	2340	2,34	23238,4	0,09	18524,6	0,15	15400,8	0,15
34	PANAMA	115	0,12	13485,0	0,05	17603,5	0,14	14635,0	0,14
35	ICELAND	11	0,01	19627,6	0,08	16841,3	0,13	14001,3	0,13
36	POLAND	227	0,23	35417,4	0,14	14693,8	0,12	12216,0	0,12
37	JORDAN	2850	2,85	16642,0	0,06	14615,3	0,11	12150,7	0,11
38	MOLDAVIA	1809	1,81	13484,1	0,05	13229,3	0,10	10998,4	
39	GIBRALTAR	29	0,03	24713,2	0,10	12526,7	0,10	10414,2	0,10
40	THAILANDA	14	0,01	19313,3	0,07	11604,5	0,09	9647,6	0,09
41	NEW ZEELAND	11	0,01	35205,2	0,14	11062,0	0,09	9196,6	0,09
42	BULGARIA	534	0,53	13041,4	0,05	11020,5	0,09	9162,0	0,09
43	AUSTRALIA	421	0,42	7682,2	0,03	10660,0	0,08	8862,4	0,08
44	EGYPT	1123	1,12	12907,4	0,05	9615,8	0,08	7994,3	0,08
45	CZECH REPUBLIC	222	0,22	6593,5		9222,7	0,07	7667,4	0,07
46	SLOVENIA	52	0,05	23841,2	0,09	9171,4	0,07	7624,8	0,07
47	CAMEROON	14	0,01	3173,7	0,01	9039,4	0,07	7515,0	0,07
48	FINLAND	53	0,05	10647,0	0,04	8456,8	0,07	7030,7	0,07
49	INS. VIRGINE AMR.	34	0,03	8264,2	0,03	7883,9	0,06	6554,4	0,06
50	PORTUGAL	115	0,12	16536,3	0,06	6811,2	0,05	5662,6	0,05
51	NORTH KOREA	19	0,02	20524,6	0,08	6234,9	0,05	5183,5	0,05
52	MALTA	33	0,03	14828,1	0,06	6221,8	0,05	5172,6	0,05
53	LIBERIA	34	0,03	2764,3	0,01	5487,7	0,04	4562,3	0,04
54	NORWAY	144	0,14	10320,9	0,04	4822,5	0,04	4009,3	0,04