



MINISTRY OF JUSTICE

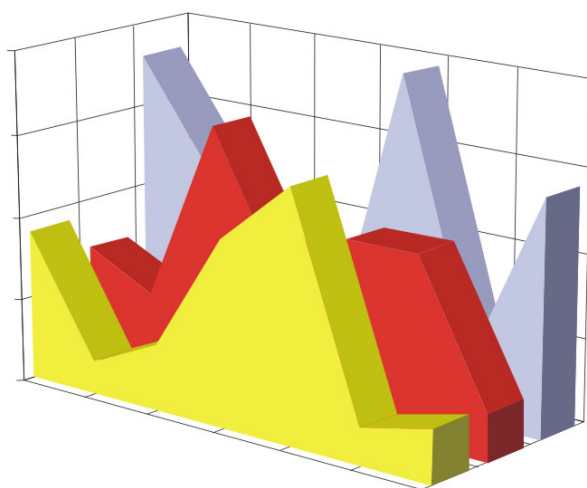
THE NATIONAL TRADE REGISTER OFFICE

Bucharest, 2, Octavian Goga Blvd., sector 3; Phone: +40 - 21 - 320.60.13; Fax: +40 - 21 - 320.58.29; Website: www.onrc.ro; E-mail: onrc@onrc.ro

COMPANIES BY FOREIGN DIRECT INVESTMENT

STATISTICAL SYNTHESIS

**OF THE NATIONAL TRADE REGISTER'S DATA
ON 31th OF OCTOBER 2004 - PROVISORY DATA**



- No. 78 -

**MINISTRY OF JUSTICE
THE NATIONAL TRADE REGISTER OFFICE**

- Operations such as incorporation of companies, changes in statutory documents and strike-off dissolution of companies are being regulated by Law No.26/1990 reissued, Law No.31/1990, reissued, OUG No.76/2001, reissued and Methodology Norms No. P/608/1998.

- This synthesis presents the trends on operations regarding companies by foreign direct investment registered in The Trade Register Office attached to the law court of Bucharest and in The Trade Register Offices attached to the law court in each county of Romania.

- Information provided by the Central Trade Register concern operations compulsory by law to be registered in the trade registers attached to the law courts.

• No part of the content of this publication, in original or in any modified format, October be reproduced, stored in a retrieval system, or transmitted, in any form or by any means, without the prior permission in writing of The Ministry of Justice – The National Trade Register Office.

• The content of this publication October be referred to in articles, studies, books, as supporting or explanatory data under the condition only, the source of the information to be clearly and precisely specified.

Table of Contents

| | Page |
|--|----------|
| 1 Explanatory Note | 1 |
| 2.1 Tables and statistical graphics for October 2004 | 3 |
| Table No.1 – Number of companies by foreign direct investment and the amount of the subscribed capital, balance account at 31 st of October 2004 | 3 |
| Diagram No. 1 – The structure of the number of companies | 3 |
| Diagram No. 2 – The structure of investment, in equivalent of currency | 3 |
| Table No.2 – Classification of companies by foreign direct investment by the investors' countries of origin, balance account at 31 st of October 2004 | 4 |
| Diagram No. 3 – The structure upon sector of activity of companies by foreign direct investment, incorporated between 1991 and October 2004 | 5 |
| Diagram No. 4 – The structure upon sector of activity in the amount of subscribed capital in companies by foreign direct investment, during 1991-October 2004 | 5 |
| Table No. 3 – The number of companies by foreign direct investment and the amount of the subscribed capital, balance account at the end of each month of 2004 | 6 |
| Diagram No. 5 – Trend in the number of companies' balance account | 6 |
| Diagram No. 6 – Trend of foreign investment balance account, in equivalent of currency | 6 |
| Table No. 4 – Comparative data on new companies by foreign direct investment and the subscribed capital, between January– October 2003 and 2004 | 7 |
| Diagram No. 7 – Dynamics of the number of new companies by foreign direct investment, between January– October and 2004 | 7 |
| Diagram No. 8 – Dynamics of the amount of foreign direct investment in new companies, between January– October 2003 and 2004 | 7 |
| Table No. 5 – Incorporation of companies by foreign direct investment, during October 2004 | 8 |
| Table No. 6 – Statutory increase of the issued capital, in companies by foreign direct investment during October 2004 | 9 |
| Table No. 7 – Strike-off of companies by foreign direct investment, from the trade register, during October 2004 | 10 |
| Table No. 8 – Changes by cession in the issued capital of the companies by foreign direct investment, during October 2004 | 11 |
| Table No. 9 – Incorporation of companies by foreign direct investment, according to the development regions, during October 2004 | 12 |
| Table No. 10 – Statutory increase in the issued capital of companies by foreign direct investment according to the development regions, during October 2004 | 12 |
| Table No. 11 – Strike-off of companies by foreign direct investment and the amount of their issued capital, according to the development regions, during October 2004 | 12 |
| Table No. 12 – Incorporation of companies by foreign direct investment, by continents according to the investors' country of origin, during October 2004 | 13 |
| Table No. 13 – Increase in the issued capital of companies by foreign direct investment, by continents according to the investors' country of origin, during October 2004 | 13 |
| Table No. 14 – Strike-off of companies by foreign direct investment and their issued capital, by continents according to the investors' country of origin, during October 2004 | 13 |
| Table No. 15 – Incorporation of companies by foreign direct investment, by economical groups of countries according to the investors' country of origin, during October 2004 | 14 |
| Table No. 16 – Increase in the issued capital of companies by foreign direct investment, by economical groups of countries according to the investors' country of origin, during October 2004 | 14 |
| Table No. 17 – Strike-off of companies by foreign direct investment and their issued capital, by economical groups of countries according to the investors' country of origin, during October 2004 | 14 |

| | |
|--|-----------|
| Table No. 18 – Classification by countries of origin of investors in companies by foreign direct investment, incorporated during October 2004 | 15 |
| Table No. 19 – Classification by investors’ countries of origin according to the amount of the increase in the issued capital, during October 2004 | 16 |
| Table No. 20 – Classification of the top 40 companies by foreign direct investment in the total subscribed capital, in equivalent of currency, during October 2004 | 17 |
| 2.2 Cumulative data for 1991 – 2003 | 18 |
| Table No. 21 – Number of registered companies with foreign investment capital and amount of subscribed capital, between 1991 and 2003 | 18 |
| Diagram No. 9 – Evolution of the number of companies | 18 |
| Diagram No. 10 – Evolution of foreign investment | 18 |
| Table No. 22 – Number of registered companies, with foreign capital investment and the value of the invested capital, between 1991 and 2003 | 19 |
| Table No. 23 – Number of registered companies, with foreign capital investment and the value of the invested capital, on economic development areas, between 1991 and 2003 | 20 |
| Table No. 24 – Number of registered companies, with foreign capital investment and the value of the invested capital, on continents between 1991 and 2003 | 20 |
| Table No. 25 – Number of registered companies, with foreign capital investment and the value of the invested capital, on economic groups, between 1991 and 2003 | 20 |
| Diagram No. 11 – Percentage of companies with foreign investment, between 1991 and 2003, on fields of activity | 21 |
| Diagram No. 12– Percentage of foreign currency invested capital in companies with foreign investment, between 1991 and 2003, on fields of activity | 21 |
| Table No. 26 – Countries classification on foreign investment capital registered between 1991 and December 2003 | 22 |

Explanatory Note

- “**Company by foreign direct investment**” should be understood as any company partially or entirely set-up with the contribution in issued capital of physical or legal persons, resident or having the registered office outside Romania’s state frontiers.

- “**Foreign investor**” is any physical or legal person resident or having the business headquarter outside Romania’s borders, being associate/shareholder in a company registered in Romania.

- “**Social capital**” known as well as “issued capital” or “initial capital” is the total contribution in cash and assets subscribed by shareholders/associates while setting-up and registering a company or while increasing the initial capital during the company’s life.

The capital *subscribed* by a foreign investor should be, due to the Romanian legislation in force, in local currency ROL or/and in other convertible currency.

The increase in capital by changes in the statutory documents includes:

- foreign investors’ contributions from new own resources, in cash and/or assets, in ROL and/or currency;
- contributions of foreign investors from dividends obtained in Romania;
- getting in possession of equities/shares by a non-resident person from a resident one.

The changes in capital by decrease/(increase) through cession include:

- the contributions in capital of non-resident associates/shareholders yielded to/(received from) resident associates/shareholders, in ROL/currency;

- The **foreign direct investment in Romania (Is)** equals to the total value of the direct foreign investment subscribed in the new registered company (**I**) *plus* the increase in issued capital through statutory documents(**M**), *plus/minus* the cession of the issued capital *by/to* resident associates/shareholders (**C**), *minus* the subscribed capital in the companies being struck-off from the Trade Register (**R**), that is:

$$\mathbf{Is = I + M \pm C - R}$$

Usual Terms:

- **incorporation** – represents the registration of the company in the trade registry awarding the quality of legal person.

- **other statutory documents** – represent the official registration of the changes occurred in a company’s life, such as: changes of the registered office address, increase or decrease of the issued capital, merger, liquidation, strike-off, etc.

- **strike-off** – represents the removal of a company from the trade registry, due to dissolution and liquidation, being also the very moment the company loses its quality of legal person. Data also include the companies under the provisions of Law No. 314/2001.

- **Operations** represent all the records in the trade registry including incorporations, other statutory documents and strike-off of companies by foreign direct investment, irrespective of the object of activity and the company’s type.

• **Terms used in tables and charts**

➤ **Number of companies:** depending on the specific table represents either the number of companies incorporated in the reference period, or the number of companies registering an increase of the issued capital, or the number of companies being struck-off from the trade registry.

➤ **Amount of the subscribed capital:**

- **total, in ROL:** the amount of the subscribed capital resulted from adding the amount subscribed in the local currency/ROL and the amount subscribed in foreign convertible currency being expressed in ROL, according to the exchange rate communicated by the National Bank of Romania at the date the deed was issued.

- **total, in equivalent of currency:**

USD : the amount of the resulted from adding and expressing in USD the convertible currency and the local currency (ROL), according to the exchange rate communicated by the National Bank of Romania at the date the deed was issued.

Euro : the balance account registered in the end of each month, calculated in equivalent of USD and expressed in Euro according to the exchange rate EUR/USD communicated by National Bank of Romania in the last working day of the due month.

➤ **Regional development:**

| | |
|----------------------------|--|
| <i>North-East:</i> | Suceava, Botoşani, Neamţ, Iaşi, Bacău, Vaslui. |
| <i>South-East:</i> | Vrancea, Galaţi, Buzău, Brăila, Tulcea, Constanţa. |
| <i>South-Muntenia:</i> | Argeş, Dâmboviţa, Prahova, Teleorman, Giurgiu, Călăraşi, Ialomiţa. |
| <i>South-West Oltenia:</i> | Gorj, Vâlcea, Dolj, Mehedinţi, Olt. |
| <i>West:</i> | Arad, Caraş-Severin, Hunedoara, Timiş. |
| <i>North-West:</i> | Bihor, Bistriţa, Cluj, Satu Mare, Sălaj, Maramureş. |
| <i>Center:</i> | Alba, Braşov, Covasna, Harghita, Mureş, Sibiu. |
| <i>Bucharest-Ilfov:</i> | Bucureşti, Ilfov. |

Source:

The integrated IT system of the trade registry is designed by The National Trade Registry Office according to the provisions of the related legislation in force. The source of information is the computerised system of the trade registers handled by the Trade Register Offices attached to the law courts.

**Number of companies by foreign direct investment
and the amount of the subscribed capital,
balance account at 31 October 2004**

| Balance account by end of period | Number of companies | | Amount of subscribed capital | | | | | | |
|-------------------------------------|------------------------|-------|------------------------------|-------|-------------------|-------|-------------------|-------|--|
| | | | Total in ROL | | Total in currency | | Total in currency | | |
| | No. | % | million ROL | % | thousand USD | % | thousand EURO | % | |
| 0 | 1 | 2 | 3 | 4 | | | | | |
| 30 September 2004, out of which | 105472 | 108,3 | 227872915,7 | 126,4 | 12119166,1 | 115,4 | 9561675,1 | 116,1 | |
| at 31 December 2003 | 97389 | 100,0 | 180211838,4 | 100,0 | 10501587,7 | 100,0 | 8237078,5 | 100,0 | |

Note: column No. 1 shows the number of companies incorporated in the due period. The data concerning the amount of the subscribed capital include the records on the issued capital in companies incorporated in the related period plus the records of increase in capital and minus the subscribed capital in companies being struck-off from the trade register in the same period. The percentage inserted in column No. 1,2,3 and 4 shows the trend compared to the records of December 2003.

Diagram no. 1

Diagram no. 2

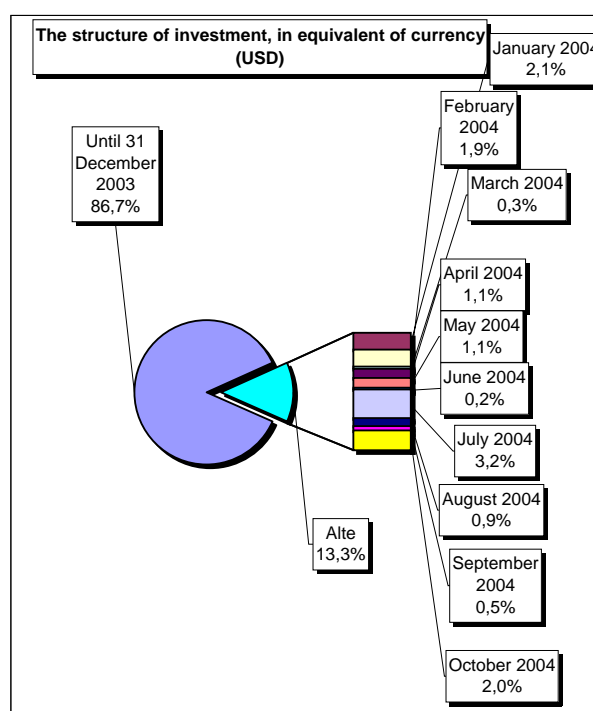
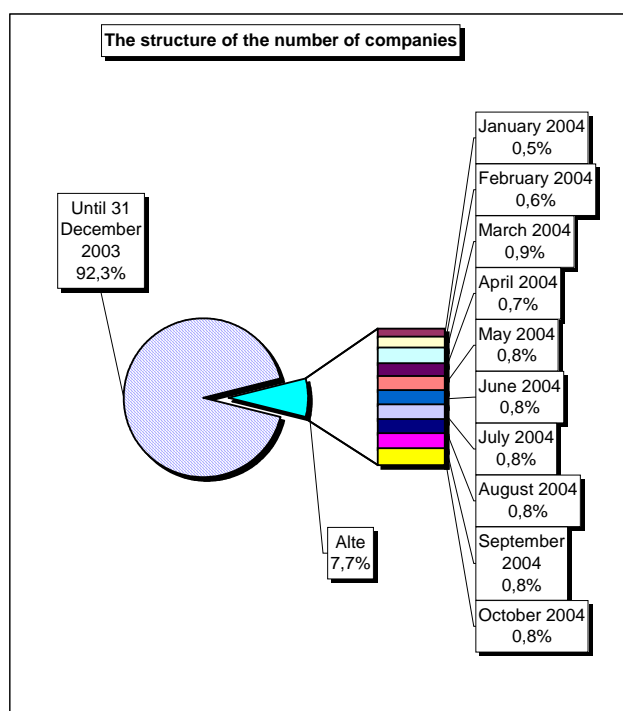


Table no. 2

**Classification* of companies by foreign direct investment
by the investors' countries of origin,
balance account at 31 October 2004**

| No. crt. | Countries | Companies by foreign investment | | Amount of subscribed capital | | | | | |
|----------|----------------------|---------------------------------|--------------|------------------------------|--------------|---------------------------------|--------------|---------------------------------|--------------|
| | | | | Total in local currency | | Total in equivalent of currency | | Total in equivalent of currency | |
| | | No. | % | million ROL | % | thousand USD | % | thousand EURO | % |
| 0 | 1 | 2 | | 3 | | 4 | | 5 | |
| | Total ROMANIA | 105472 | 100,0 | 227872915,7 | 100,0 | 12119166,1 | 100,0 | 9561675,1 | 100,0 |
| 1 | NETHERLAND | 1963 | 1,86 | 39899708,3 | 17,51 | 1994469,3 | 16,46 | 1564392,1 | 16,36 |
| 2 | FRANCE | 3565 | 3,38 | 32786294,2 | 14,39 | 1502894,9 | 12,40 | 1178818,2 | 12,33 |
| 3 | GERMANY | 11919 | 11,30 | 17704181,4 | 7,77 | 978258,2 | 8,07 | 767311,6 | 8,02 |
| 4 | U.S.A. | 4122 | 3,91 | 10348801,6 | 4,54 | 880242,5 | 7,26 | 690431,5 | 7,22 |
| 5 | ITALY | 16404 | 15,55 | 10169546,5 | 4,46 | 658145,3 | 5,43 | 516226,2 | 5,40 |
| 6 | ANTILELE OLANDEZE | 9 | *** | 20802995,0 | 9,13 | 649842,0 | 5,36 | 509713,4 | 5,33 |
| 7 | AUSTRIA | 3145 | 2,98 | 15151630,8 | 6,65 | 630178,5 | 5,20 | 494290,0 | 5,17 |
| 8 | GREAT BRITAIN | 1899 | 1,80 | 13314660,2 | 5,84 | 591015,7 | 4,88 | 463572,1 | 4,85 |
| 9 | CYPRUS | 1304 | 1,24 | 9043733,1 | 3,97 | 583291,9 | 4,81 | 457513,8 | 4,78 |
| 10 | TURKEY | 9109 | 8,64 | 4707752,3 | 2,07 | 449472,8 | 3,71 | 352550,7 | 3,69 |
| 11 | I.VIRGINE BRIT. | 203 | 0,19 | 10935195,1 | 4,80 | 343435,6 | 2,83 | 269378,9 | 2,82 |
| 12 | HUNGARY | 4931 | 4,68 | 5712689,6 | 2,51 | 340043,4 | 2,81 | 266718,2 | 2,79 |
| 13 | GREECE | 2851 | 2,70 | 5799232,9 | 2,54 | 327469,3 | 2,70 | 256855,4 | 2,69 |
| 14 | SWITZERLAND | 1384 | 1,31 | 6218083,1 | 2,73 | 308813,7 | 2,55 | 242222,7 | 2,53 |
| 15 | LUXEMBOURG | 247 | 0,23 | 4678941,2 | 2,05 | 265383,7 | 2,19 | 208157,7 | 2,18 |
| 16 | SOUTH KOREA | 85 | 0,08 | 493082,9 | 0,22 | 217366,6 | 1,79 | 170494,7 | 1,78 |
| 17 | SPAIN | 810 | 0,77 | 1410326,9 | 0,62 | 174127,2 | 1,44 | 136579,3 | 1,43 |
| 18 | CHINA | 8397 | 7,96 | 3265320,9 | 1,43 | 145747,3 | 1,20 | 114319,1 | 1,20 |
| 19 | SWEDEN | 831 | 0,79 | 2575155,1 | 1,13 | 111358,7 | 0,92 | 87345,9 | 0,91 |
| 20 | WITH OUT CITIZENSHIP | 21 | 0,02 | 6696,6 | *** | 75663,3 | 0,62 | 59347,7 | 0,62 |
| 21 | BELGIUM | 1313 | 1,24 | 1015217,0 | 0,45 | 74988,9 | 0,62 | 58818,7 | 0,62 |
| 22 | JAPAN | 157 | 0,15 | 1799520,6 | 0,79 | 68054,3 | 0,56 | 53379,4 | 0,56 |
| 23 | A.R. OF SYRIA | 5370 | 5,09 | 722677,1 | 0,32 | 66792,0 | 0,55 | 52389,3 | 0,55 |
| 24 | LIECHTENSTEIN | 158 | 0,15 | 747596,5 | 0,33 | 63762,8 | 0,53 | 50013,3 | 0,52 |
| 25 | CANADA | 1005 | 0,95 | 459202,3 | 0,20 | 58421,9 | 0,48 | 45824,1 | 0,48 |
| 26 | IRAQ | 5817 | 5,52 | 623664,3 | 0,27 | 54471,1 | 0,45 | 42725,2 | 0,45 |
| 27 | LEBANON | 3386 | 3,21 | 633994,1 | 0,28 | 48639,5 | 0,40 | 38151,1 | 0,40 |
| 28 | MARSHALL ISLANDS | 7 | *** | 1189471,9 | 0,52 | 36794,9 | 0,30 | 28860,6 | 0,30 |
| 29 | ISRAEL | 2862 | 2,71 | 331385,7 | 0,15 | 31336,4 | 0,26 | 24579,2 | 0,26 |
| 30 | GIBRALTAR | 30 | 0,03 | 495328,0 | 0,22 | 27054,7 | 0,22 | 21220,7 | 0,22 |
| 31 | FORMER YUGOSLAVIE | 745 | 0,71 | 91734,0 | 0,04 | 22740,6 | 0,19 | 17836,9 | 0,19 |
| 32 | IRAN | 2647 | 2,51 | 231107,2 | 0,10 | 22400,7 | 0,18 | 17570,3 | 0,18 |
| 33 | ICELAND | 12 | 0,01 | 198271,2 | 0,09 | 20352,0 | 0,17 | 15963,4 | 0,17 |
| 34 | DENMARK | 286 | 0,27 | 446572,4 | 0,20 | 18513,8 | 0,15 | 14521,6 | 0,15 |
| 35 | PANAMA | 120 | 0,11 | 135159,5 | 0,06 | 17743,7 | 0,15 | 13917,5 | 0,15 |
| 36 | IRELAND | 253 | 0,24 | 127141,5 | 0,06 | 16550,2 | 0,14 | 12981,4 | 0,14 |
| 37 | JORDAN | 3094 | 2,93 | 163269,4 | 0,07 | 16431,3 | 0,14 | 12888,2 | 0,13 |
| 38 | MOLDAVIA | 1857 | 1,76 | 150310,8 | 0,07 | 15042,8 | 0,12 | 11799,1 | 0,12 |
| 39 | POLAND | 240 | 0,23 | 344927,4 | 0,15 | 14565,9 | 0,12 | 11425,0 | 0,12 |
| 40 | KUWEIT | 148 | 0,14 | 28037,9 | 0,01 | 12042,4 | 0,10 | 9445,7 | 0,10 |
| 41 | EGYPT | 1299 | 1,23 | 134753,5 | 0,06 | 11774,6 | 0,10 | 9235,6 | 0,10 |
| 42 | BULGARIA | 576 | 0,55 | 108841,2 | 0,05 | 11072,1 | 0,09 | 8684,6 | 0,09 |
| 43 | NEW ZEELAND | 11 | 0,01 | 352120,9 | 0,15 | 11072,1 | 0,09 | 8684,5 | 0,09 |
| 44 | AUSTRALIA | 429 | 0,41 | 38657,7 | 0,02 | 9432,5 | 0,08 | 7398,5 | 0,08 |
| 45 | CZECH REPUBLIC | 228 | 0,22 | 60570,5 | 0,08 | 9428,6 | 0,08 | 7395,4 | 0,08 |
| 46 | CAMEROON | 14 | 0,01 | 31739,4 | 0,01 | 9036,7 | 0,07 | 7088,1 | 0,07 |
| 47 | INS. VIRGINE AMR. | 35 | 0,03 | 82644,1 | 0,04 | 7884,3 | 0,07 | 6184,2 | 0,06 |
| 48 | CAYMAN ISLANDS | 8 | *** | 52738,4 | 0,02 | 6461,8 | 0,05 | 5068,4 | 0,05 |
| 49 | PORTUGAL | 121 | 0,11 | 149001,8 | 0,07 | 6360,4 | 0,05 | 4988,9 | 0,05 |
| 50 | NORTH KOREA | 20 | 0,02 | 205247,6 | 0,09 | 6235,1 | 0,05 | 4890,6 | 0,05 |

*) includes countries selected upon the amount of the foreign direct investment, in equivalent of currency USD, ranking on a descending scale (col 4)

*** Less than 0,01%

Diagram no. 3

The structure upon sector of activity* of companies by foreign direct investment, incorporated between 1991 and October 2004

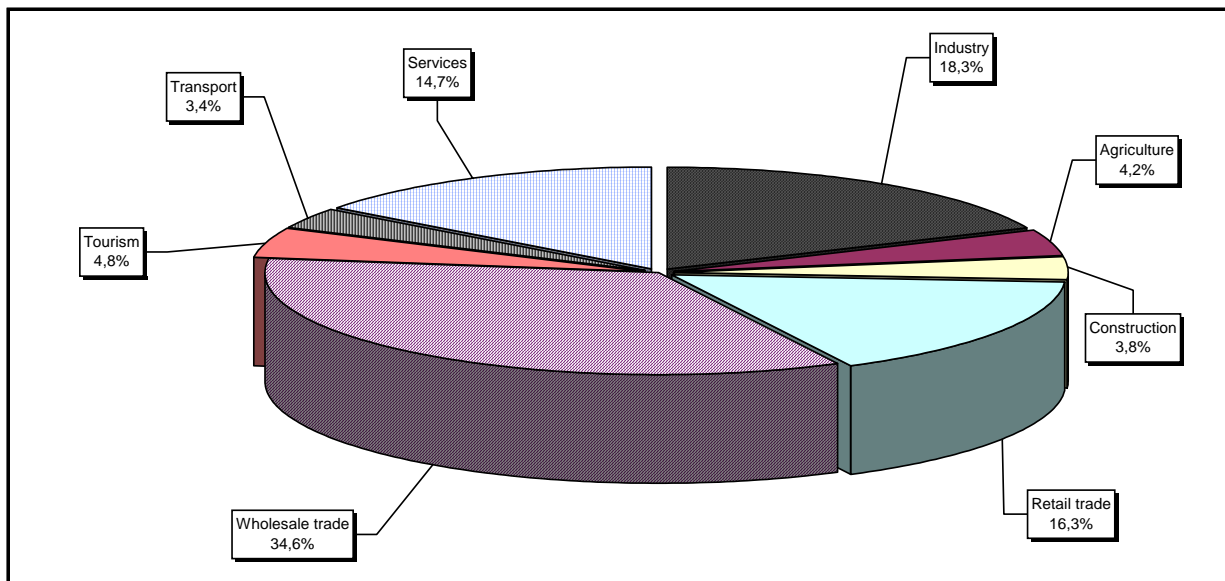
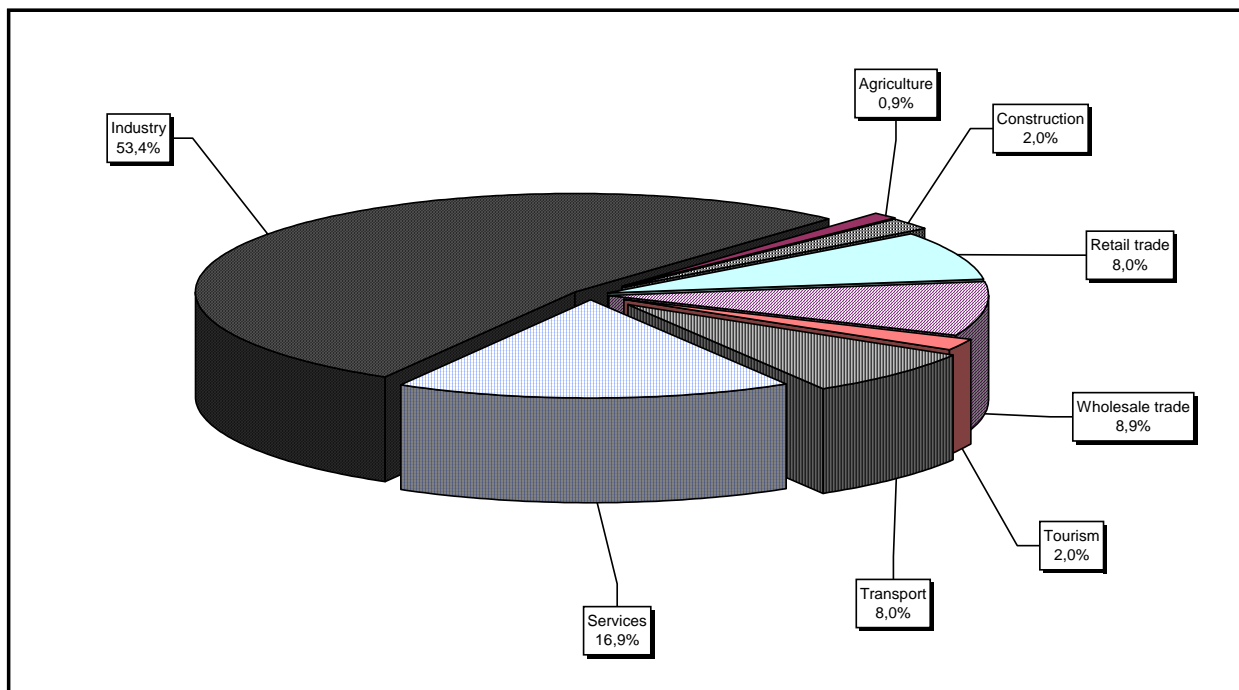


Diagram no. 4

The structure upon sector of activity in the amount of subscribed capital** in companies by foreign direct investment, during 1991 - October 2004



*) Calculated upon the main sector of activity declared

**) Calculated upon the total amount of the subscribed capital, in equivalent of currency (USD)

Table no. 3

**The number of companies by foreign direct investment
and the amount of the subscribed capital,
balance account in the end of each month of 2004**

| balance account at 30 April 2004 | Number of companies | | Amount of subscribed capital | | | | | |
|-------------------------------------|------------------------|-------|------------------------------|-------|------------------------------------|-------|------------------------------------|-------|
| | | | Total in local currency | | Total in equivalent of currency | | Total in equivalent of currency | |
| | No. | % | million ROL | % | thousand USD | % | thousand EURO | % |
| 0 | 1 | 2 | | 3 | | 4 | | |
| DECEMBER 2003 | 97389 | 100,0 | 180211838,4 | 100,0 | 10501587,7 | 100,0 | 8237078,5 | 100,0 |
| JANUARY 2004 | 97966 | 100,6 | 184454371,9 | 102,4 | 10759571,1 | 102,5 | 8439431,6 | 102,5 |
| FEBRUARY 2004 | 98626 | 101,3 | 191102772,8 | 106,0 | 10992174,7 | 104,7 | 8621877,7 | 104,7 |
| MARCH 2004 | 99543 | 102,2 | 190921985,2 | 105,9 | 11022977,3 | 105,0 | 8646038,2 | 105,0 |
| APRIL 2004 | 100313 | 103,0 | 195204734,7 | 108,3 | 11150666,9 | 106,2 | 8746193,5 | 106,2 |
| MAY 2004 | 101139 | 103,9 | 199914840,0 | 110,9 | 11285619,7 | 107,5 | 8852045,7 | 107,5 |
| JUNE 2004 | 101965 | 104,7 | 200991745,2 | 111,5 | 11307790,3 | 107,7 | 8869435,6 | 107,7 |
| JULY 2004 | 102842 | 105,6 | 213695611,7 | 118,6 | 11699695,2 | 111,4 | 9176832,1 | 111,4 |
| AUGUST 2004 | 103687 | 106,5 | 216158829,3 | 119,9 | 11807084,2 | 112,4 | 9263334,8 | 112,5 |
| SEPTEMBER 2004 | 104577 | 107,4 | 218261854,5 | 121,1 | 11870810,7 | 113,0 | 9313319,6 | 113,1 |
| OCTOBER 2004 | 105472 | 108,3 | 227872915,7 | 126,4 | 12119166,1 | 115,4 | 9561675,1 | 116,1 |

Note: column no. 1 shows the number of companies incorporated in the due period. The data concerning the amount of the subscribed capital include the records on the issued capital in companies incorporated in the related period plus the records of increase in capital and minus the subscribed capital in companies being struck-off from the trade register in the same period. The percentage inserted in column No. 1,2,3 and 4 shows the trend compared to the records of December 2003.

Diagram no. 5

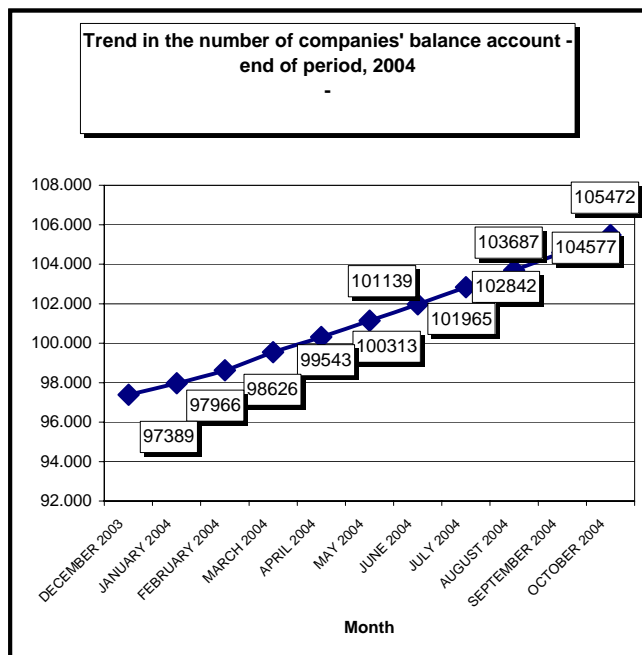


Diagram no. 6

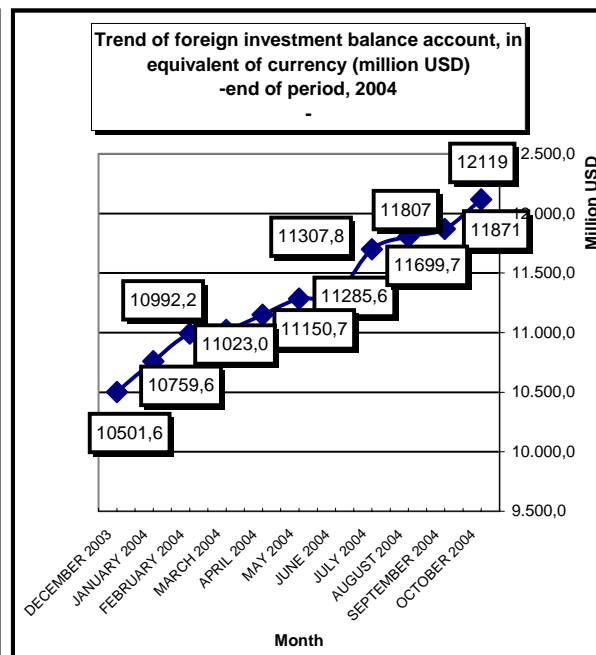


Table no. 4

Comparative data on new companies by foreign direct investment and the subscribed capital, between January - October 2003 and 2004

| Month | 2003 | | | | 2004 | | | | | |
|----------------------------|---------------|-------|---|-------|---------------|-------|-----------------------------|---|-------|-----------------------------|
| | New companies | | Subscribed capital, in equivalent of currency | | New companies | | Trend related to 2003 (5/1) | Subscribed capital, in equivalent of currency | | Trend related to 2003 (8/3) |
| | No. | % | thousand USD | % | No. | % | % | thousand USD | % | % |
| 0 | 1 | 2 | 3 | 4 | 5 | 6 | 7 | 8 | 9 | 10 |
| Jan-December out of which: | 5532 | 100,0 | 58668,8 | 100,0 | 8083 | 100,0 | 146,1 | 81330,8 | 100,0 | 138,6 |
| JANUARY | 697 | 12,6 | 8984,0 | 15,3 | 577 | 7,1 | 82,8 | 3021,1 | 3,7 | 33,6 |
| FEBRUARY | 623 | 11,3 | 5827,9 | 9,9 | 660 | 8,2 | 105,9 | 11644,7 | 14,3 | 199,8 |
| MARCH | 500 | 9,0 | 3731,6 | 6,4 | 917 | 11,3 | 183,4 | 10522,2 | 12,9 | 282,0 |
| APRIL | 443 | 8,0 | 3259,5 | 5,6 | 770 | 9,5 | 173,8 | 18694,0 | 23,0 | 573,5 |
| MAY | 440 | 8,0 | 9317,8 | 15,9 | 826 | 10,2 | 187,7 | 5758,5 | 7,1 | 61,8 |
| JUNE | 577 | 10,4 | 3797,6 | 6,5 | 826 | 10,2 | 143,2 | 14123,2 | 17,4 | 371,9 |
| JULY | 637 | 11,5 | 2117,1 | 3,6 | 877 | 10,8 | 137,7 | 5843,9 | 7,2 | 276,0 |
| AUGUST | 553 | 10,0 | 4167,3 | 7,1 | 845 | 10,5 | 152,8 | 3318,0 | 4,1 | 79,6 |
| SEPTEMBER | 583 | 10,5 | 2219,4 | 3,8 | 890 | 11,0 | 152,7 | 5625,3 | 6,9 | 253,5 |
| OCTOBER | 479 | 8,7 | 15246,6 | 26,0 | 895 | 11,1 | 186,8 | 2780,0 | 3,4 | 18,2 |

Diagram no. 7

Diagram no. 8

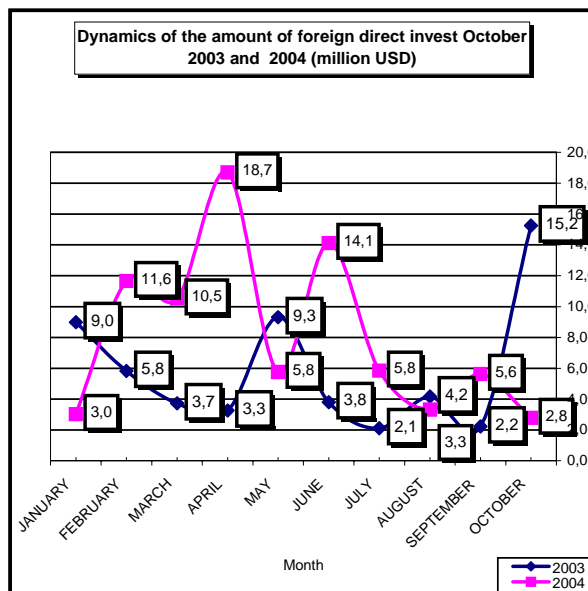
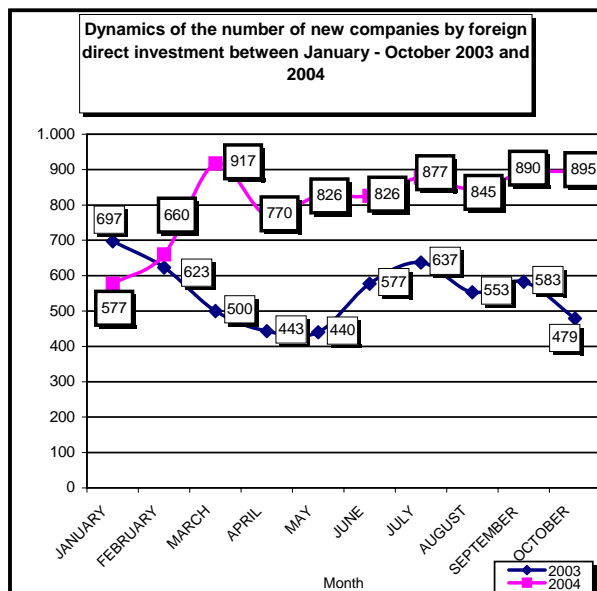


Table no. 5

**Incorporation of companies by foreign direct investment,
during October 2004**

| balance account at 30 April 2004 | Number of companies | | Amount of subscribed capital | | | | | | Ranking by: | |
|-------------------------------------|------------------------|--------------|------------------------------|--------------|------------------------------------|--------------|------------------------------------|--------------|-------------|----|
| | | | Total in local currency | | Total in equivalent of currency | | Total in equivalent of currency | | | |
| | No. | % | million ROL | % | USD | % | EURO | % | | |
| 0 | 1 | | 2 | | 3 | | 4 | | 5 | |
| Total ROMANIA | 895 | 100,0 | 93102,5 | 100,0 | 2780004 | 100,0 | 2180538 | 100,0 | * | ** |
| ALBA | 14 | 1,56 | 111,5 | 0,12 | 3353 | 0,12 | 2630 | 0,12 | 15 | 18 |
| ARAD | 23 | 2,57 | 145,5 | 0,16 | 4356 | 0,16 | 3417 | 0,16 | 9 | 16 |
| ARGES | 21 | 2,35 | 5777,3 | 6,21 | 172725 | 6,21 | 135479 | 6,21 | 11 | 4 |
| BACAU | 10 | 1,12 | 54,6 | 0,06 | 1641 | 0,06 | 1287 | 0,06 | 18 | 22 |
| BIHOR | 54 | 6,03 | 2239,2 | 2,41 | 67245 | 2,42 | 52745 | 2,42 | 3 | 7 |
| BISTRITA-NASAUD | 5 | 0,56 | 433,6 | 0,47 | 13258 | 0,48 | 10399 | 0,48 | 23 | 12 |
| BOTOSANI | 2 | 0,22 | 10,0 | 0,01 | 294 | 0,01 | 231 | 0,01 | 26 | 35 |
| BRASOV | 34 | 3,80 | 5935,9 | 6,38 | 176660 | 6,35 | 138566 | 6,35 | 5 | 3 |
| BRAILA | 4 | 0,45 | 8,6 | *** | 255 | *** | 200 | *** | 24 | 36 |
| BUZAU | 4 | 0,45 | 42,0 | 0,05 | 1263 | 0,05 | 991 | 0,05 | 24 | 25 |
| CARAS-SEVERIN | 9 | 1,01 | 203,2 | 0,22 | 6086 | 0,22 | 4774 | 0,22 | 19 | 15 |
| CALARASI | 7 | 0,78 | 25,0 | 0,03 | 750 | 0,03 | 588 | 0,03 | 21 | 29 |
| CLUJ | 37 | 4,13 | 1275,4 | 1,37 | 37836 | 1,36 | 29677 | 1,36 | 4 | 9 |
| CONSTANTA | 25 | 2,79 | 4170,9 | 4,48 | 122837 | 4,42 | 96349 | 4,42 | 8 | 5 |
| COVASNA | 7 | 0,78 | 25,8 | 0,03 | 778 | 0,03 | 610 | 0,03 | 21 | 27 |
| DAMBOVITA | 14 | 1,56 | 101,2 | 0,11 | 3017 | 0,11 | 2366 | 0,11 | 15 | 19 |
| DOLJ | 14 | 1,56 | 43,4 | 0,05 | 1315 | 0,05 | 1031 | 0,05 | 15 | 24 |
| GALATI | 8 | 0,89 | 1366,4 | 1,47 | 40600 | 1,46 | 31845 | 1,46 | 20 | 8 |
| GIURGIU | 2 | 0,22 | 36,0 | 0,04 | 1120 | 0,04 | 878 | 0,04 | 26 | 26 |
| GORJ | 1 | 0,11 | 2,0 | *** | 59 | *** | 46 | *** | 27 | 41 |
| HARGHITA | 20 | 2,23 | 70,6 | 0,08 | 2105 | 0,08 | 1651 | 0,08 | 12 | 21 |
| HUNEDOARA | 27 | 3,02 | 136,2 | 0,15 | 4095 | 0,15 | 3212 | 0,15 | 7 | 17 |
| IALOMITA | 3 | 0,34 | 13,0 | 0,01 | 395 | 0,01 | 310 | 0,01 | 25 | 33 |
| IASI | 17 | 1,90 | 514,2 | 0,55 | 15133 | 0,54 | 11870 | 0,54 | 14 | 11 |
| MARAMURES | 12 | 1,34 | 24,9 | 0,03 | 759 | 0,03 | 595 | 0,03 | 16 | 28 |
| MEHEDINTI | 6 | 0,67 | 19,3 | 0,02 | 583 | 0,02 | 457 | 0,02 | 22 | 31 |
| MURES | 23 | 2,57 | 304,9 | 0,33 | 9159 | 0,33 | 7184 | 0,33 | 9 | 14 |
| NEAMT | 11 | 1,23 | 19,5 | 0,02 | 585 | 0,02 | 459 | 0,02 | 17 | 30 |
| OLT | 2 | 0,22 | 18,4 | 0,02 | 553 | 0,02 | 434 | 0,02 | 26 | 32 |
| PRAHOVA | 14 | 1,56 | 97,5 | 0,10 | 2928 | 0,11 | 2297 | 0,11 | 15 | 20 |
| SALAJ | 7 | 0,78 | 52,1 | 0,06 | 1573 | 0,06 | 1234 | 0,06 | 21 | 23 |
| SATU MARE | 19 | 2,12 | 984,4 | 1,06 | 29602 | 1,06 | 23219 | 1,06 | 13 | 10 |
| SIBIU | 32 | 3,58 | 3119,6 | 3,35 | 92011 | 3,31 | 72170 | 3,31 | 6 | 6 |
| SUCEAVA | 2 | 0,22 | 3,4 | *** | 102 | *** | 80 | *** | 26 | 39 |
| TELEORMAN | 1 | 0,11 | 5,0 | *** | 149 | *** | 117 | *** | 27 | 38 |
| TIMIS | 80 | 8,94 | 26025,5 | 27,95 | 780599 | 28,08 | 612275 | 28,08 | 2 | 2 |
| TULCEA | 4 | 0,45 | 9,8 | 0,01 | 295 | 0,01 | 231 | 0,01 | 24 | 34 |
| VASLUI | 2 | 0,22 | 2,6 | *** | 78 | *** | 61 | *** | 26 | 40 |
| VALCEA | 2 | 0,22 | 7,0 | *** | 210 | *** | 165 | *** | 26 | 37 |
| VRANCEA | 2 | 0,22 | 7,0 | *** | 210 | *** | 165 | *** | 26 | 37 |
| MUN. BUCURESTI | 292 | 32,63 | 39345,5 | 42,26 | 1173498 | 42,21 | 920451 | 42,21 | 1 | 1 |
| ILFOV | 22 | 2,46 | 314,8 | 0,34 | 9934 | 0,36 | 7792 | 0,36 | 10 | 13 |

*) number of companies (column 1)

**) capital in equivalent currency (column3)

*** Less than 0.01%

Table no. 8

**Changes by cession in the issued capital
of the companies by foreign direct investment,
during October 2004**

| balance account at 30 April 2004 | Number of companies | | Amount of subscribed capital | | | | | | Ranking by: | |
|-------------------------------------|------------------------|--------------|------------------------------|--------------|------------------------------------|--------------|------------------------------------|--------------|-------------|----|
| | | | Total in local currency | | Total in equivalent of currency | | Total in equivalent of currency | | | |
| | No. | % | million ROL | % | USD | % | EURO | % | | |
| 0 | 1 | | 2 | | 3 | | 4 | | 5 | |
| Total ROMANIA | 352 | 100,0 | 2658728,5 | 100,0 | 89361947 | 100,0 | 70092389 | 100,0 | * | ** |
| ALBA | 2 | 0,6 | 1115,0 | 0,04 | 33424 | 0,04 | 26217 | 0,04 | 9 | 9 |
| ARAD | 4 | 1,1 | 50,7 *** | | 7744 | 0,01 | 6074 | 0,01 | 7 | 35 |
| ARGES | 3 | 0,9 | 364,3 | 0,01 | 11893,0 | 0,01 | 9328,5 | 0,01 | 8 | 14 |
| BACAU | 1 | 0,3 | 1602755,9 | 60,28 | 48139575 | 53,87 | 37759001 | 53,87 | 10 | 1 |
| at 31 December 2003 | 4 | 1,1 | 25,6 | 0,00 | 9777 | 0,01 | 7669 | 0,01 | 7 | 36 |
| BISTRITA-NASAUD | 3 | 0,9 | 98,1 *** | | 31604 | 0,04 | 24789 | 0,04 | 8 | 11 |
| BOTOSANI | | | | | | | | | | |
| BRASOV | 6 | 1,7 | 162,2 *** | | 7925 *** | | 6216 *** | | 5 | 18 |
| BRAILA | | | | | | | | | | |
| BUZAU | 2 | 0,6 | 5,6 *** | | 168 *** | | 132 *** | | 9 | 28 |
| CARAS-SEVERIN | 1 | 0,3 | 445,7 | 0,02 | 53747 | 0,06 | 42157 | 0,06 | 10 | 8 |
| CALARASI | 1 | 0,3 | 57,1 *** | | 1730 *** | | 1357 *** | | 10 | 23 |
| CLUJ | 6 | 1,7 | 724529,4 | 27,25 | 21814621 | 24,41 | 17110627 | 24,41 | 5 | 2 |
| CONSTANTA | 4 | 1,1 | 36,6 *** | | 20078 | 0,02 | 15748 | 0,02 | 7 | 13 |
| COVASNA | 5 | 1,4 | 80,9 *** | | 3377 *** | | 2649 *** | | 6 | 21 |
| DAMBOVITA | 4 | 1,1 | 32,7 *** | | 11304 | 0,01 | 8866 | 0,01 | 7 | 16 |
| DOLJ | 4 | 1,1 | 8,7 *** | | 11403 | 0,01 | 8944 | 0,01 | 7 | 15 |
| GALATI | | | | | | | | | | |
| GIURGIU | 1 | 0,3 | 857,7 | 0,03 | 5750 *** | | 4510 *** | | 10 | 19 |
| GORJ | 1 | 0,3 | 0,9 *** | | 60 *** | | 47 *** | | 10 | 31 |
| HARGHITA | 5 | 1,4 | 534,9 | 0,02 | 269521 | 0,30 | 211403 | 0,30 | 6 | 5 |
| HUNEDOARA | 6 | 1,7 | 21,3 *** | | 619 *** | | 486 *** | | 5 | 26 |
| IALOMITA | 2 | 0,6 | 82,4 *** | | 4785 *** | | 3753 *** | | 9 | 20 |
| IASI | 5 | 1,4 | 20558,0 | 0,77 | 630762 | 0,71 | 494748 | 0,71 | 6 | 4 |
| MARAMURES | 8 | 2,3 | 129,3 *** | | 27263 | 0,03 | 21384 | 0,03 | 4 | 12 |
| MEHEDINTI | 2 | 0,6 | 34,7 *** | | 1052 *** | | 825 *** | | 9 | 24 |
| MURES | 2 | 0,6 | 1119,1 | 0,04 | 32268 | 0,04 | 25310 | 0,04 | 9 | 10 |
| NEAMT | | | | | | | | | | |
| OLT | 3 | 0,9 | 4099,3 | 0,15 | 127117 | 0,14 | 99706 | 0,14 | 8 | 6 |
| PRAHOVA | 3 | 0,9 | 30,0 | 0,00 | 905 | 0,00 | 710 | 0,00 | 8 | 34 |
| SALAJ | | | | | | | | | | |
| SATU MARE | 3 | 0,9 | 1,1 *** | | 89 *** | | 70 *** | | 8 | 30 |
| SIBIU | 4 | 1,1 | 26,5 *** | | 850 *** | | 667 *** | | 7 | 25 |
| SUCEAVA | 3 | 0,9 | 0,0 *** | | 3304 *** | | 2592 *** | | 8 | 22 |
| TELEORMAN | 1 | 0,3 | 10,0 *** | | 305 *** | | 239 *** | | 10 | 27 |
| TIMIS | 27 | 7,7 | 1723,3 | 0,06 | 94188 | 0,11 | 73878 | 0,11 | 2 | 7 |
| TULCEA | | | | | | | | | | |
| VASLUI | 1 | 0,3 | 0,3 *** | | 9 *** | | 7 *** | | 10 | 32 |
| VALCEA | 4 | 1,1 | 33,6 *** | | 9513 | 0,01 | 7462 | 0,01 | 7 | 17 |
| VRANCEA | 1 | 0,3 | 2,4 *** | | 100 *** | | 78 *** | | 10 | 29 |
| MUN. BUCURESTI | 200 | 56,8 | 301926,4 | 11,36 | 18088854 | 20,24 | 14188265 | 20,24 | 1 | 3 |
| ILFOV | 20 | 5,7 | 2120,0 | 0,08 | 56885 | 0,06 | 44619 | 0,06 | 3 | 37 |

*) number of companies (column 1)

**) capital in equivalent currency (column 3)

*** Less than 0,01%

Note: Empty rows reveal that there are no operation in the current month

Table no. 9

**Incorporation of companies by foreign direct investment,
according to the development regions,
during October 2004**

| Development regions | Number of companies | | Amount of subscribed capital | | | | | | Ranking by: | |
|----------------------|---------------------|--------------|------------------------------|--------------|---------------------------------|--------------|---------------------------------|--------------|-------------|----|
| | | | Total in local currency | | Total in equivalent of currency | | Total in equivalent of currency | | | |
| | No. | % | million ROL | % | USD | % | EURO | % | | |
| 0 | 1 | | 2 | | 3 | | 4 | | 5 | |
| Total ROMANIA | 895 | 100,0 | 93102,5 | 100,0 | 2780004 | 100,0 | 2180538 | 100,0 | * | ** |
| NORTH-EAST | 44 | 4,9 | 604,3 | 0,6 | 17833 | 0,6 | 13988 | 0,6 | 7 | 7 |
| SOUTH-EAST | 47 | 5,3 | 5604,7 | 6,0 | 165460 | 6,0 | 129781 | 6,0 | 6 | 5 |
| SOUTH-MUNTENIA | 62 | 6,9 | 6055,0 | 6,5 | 181084 | 6,5 | 142036 | 6,5 | 5 | 4 |
| SOUTH-WEST OLTENIA | 25 | 2,8 | 90,1 | 0,1 | 2720 | 0,1 | 2133 | 0,1 | 8 | 8 |
| WEST | 139 | 15,5 | 26510,3 | 28,5 | 795136 | 28,6 | 623677 | 28,6 | 2 | 2 |
| at 31 December 2003 | 134 | 15,0 | 5009,6 | 5,4 | 150273 | 5,4 | 117869 | 5,4 | 3 | 6 |
| CENTER | 130 | 14,5 | 9568,3 | 10,3 | 284066 | 10,2 | 222811 | 10,2 | 4 | 3 |
| BUCHAREST-ILFOV | 314 | 35,1 | 39660,3 | 42,6 | 1183432 | 42,6 | 928243 | 42,6 | 1 | 1 |

Table no. 10

**Statutory increase in the issued capital of companies by
foreign direct investment, according to the development regions,
during October 2004**

| Development regions | Number of companies | | Amount of subscribed capital | | | | | | Ranking by: | |
|----------------------|---------------------|--------------|------------------------------|--------------|---------------------------------|--------------|---------------------------------|--------------|-------------|----|
| | | | Total in local currency | | Total in equivalent of currency | | Total in equivalent of currency | | | |
| | No. | % | million ROL | % | USD | % | EURO | % | | |
| 0 | 1 | | 2 | | 3 | | 4 | | 5 | |
| Total ROMANIA | 513 | 100,0 | 12489340,5 | 100,0 | 354630169 | 100,0 | 278159514 | 100,0 | * | ** |
| NORTH-EAST | 15 | 2,9 | 1868609,0 | 15,0 | 56054276 | 15,8 | 43967016 | 15,8 | 6 | 2 |
| SOUTH-EAST | 13 | 2,5 | 3233,0 | 0,0 | 169462 | 0,0 | 132920 | 0,0 | 8 | 7 |
| SOUTH-MUNTENIA | 20 | 3,9 | 191571,3 | 1,5 | -14966058 | -4,2 | -11738853 | -4,2 | 5 | 8 |
| SOUTH-WEST OLTENIA | 14 | 2,7 | 53849,4 | 0,4 | 1622198 | 0,5 | 1272395 | 0,5 | 7 | 5 |
| WEST | 42 | 8,2 | 221433,1 | 1,8 | 6543258 | 1,8 | 5132303 | 1,8 | 2 | 3 |
| NORTH-WEST | 27 | 5,3 | 27397,6 | 0,2 | 466379 | 0,1 | 365811 | 0,1 | 3 | 6 |
| CENTER | 25 | 4,9 | 148154,9 | 1,2 | 4382486 | 1,2 | 3437469 | 1,2 | 4 | 4 |
| BUCHAREST-ILFOV | 357 | 69,6 | 9975092,2 | 79,9 | 300358168 | 84,7 | 235590452 | 84,7 | 1 | 1 |

Table no. 11

**Strike-off of companies by foreign direct investment and the amount
of their issued capital, according to the development regions,
during October 2004**

| Development regions | Number of companies | | Amount of subscribed capital | | | | | | Ranking by: | |
|----------------------|---------------------|--------------|------------------------------|--------------|---------------------------------|--------------|---------------------------------|--------------|-------------|----|
| | | | Total in local currency | | Total in equivalent of currency | | Total in equivalent of currency | | | |
| | No. | % | million ROL | % | USD | % | EURO | % | | |
| 0 | 1 | | 2 | | 3 | | 4 | | 5 | |
| Total ROMANIA | 79 | 100,0 | 312653,3 | 100,0 | 107786 | 100,0 | 15446341 | 100,0 | * | ** |
| NORTH-EAST | 6 | 7,6 | 2786,5 | 0,9 | 107786 | 0,5 | 84544 | 0,5 | 5 | 5 |
| SOUTH-EAST | 5 | 6,3 | 2153,8 | 0,7 | 68619 | 0,3 | 53822 | 0,3 | 6 | 6 |
| SOUTH-MUNTENIA | 4 | 5,1 | 296553,0 | 94,9 | 18495044 | 93,9 | 14506866 | 93,9 | 7 | 1 |
| SOUTH-WEST OLTENIA | 5 | 6,3 | 9,0 | *** | 269 | *** | 211 | *** | 6 | 8 |
| WEST | 8 | 10,1 | 1920,9 | 0,6 | 271032 | 1,4 | 212588 | 1,4 | 4 | 4 |
| NORTH-WEST | 14 | 17,7 | 1328,8 | 0,4 | 361009 | 1,8 | 283163 | 1,8 | 2 | 3 |
| CENTER | 12 | 15,2 | 76,2 | 0,0 | 20997 | 0,1 | 16469 | 0,1 | 3 | 7 |
| BUCHAREST-ILFOV | 25 | 31,6 | 7825,1 | 2,5 | 368040 | 1,9 | 288678 | 1,9 | 1 | 2 |

*) number of companies (column 1)

**) total issued capital, in equivalent of currency (column3)

*** Less than 0.01%

Table no. 12

**Incorporation of companies by foreign direct investment, by continents
according to the investors' country of origin,
during October 2004**

| Continent | Number of companies | | Amount of subscribed capital | | | | | | Ranking by: | |
|---------------------|---------------------|-------|------------------------------|-------|---------------------------------|-------|---------------------------------|-------|-------------|----|
| | | | Total in local currency | | Total in equivalent of currency | | Total in equivalent of currency | | | |
| | No. | % | million ROL | % | USD | % | EURO | % | | |
| 0 | 1 | | 2 | | 3 | | 4 | | 5 | |
| Total ROMANIA | 895 | 100,0 | 93102,5 | 100,0 | 2780004 | 100,0 | 2273442 | 100,0 | * | ** |
| EUROPE | 759 | 84,8 | 77308,7 | 83,0 | 2309962 | 83,1 | 1811853 | 79,7 | 1 | 1 |
| AFRICA | 9 | 1,0 | 1962,9 | 2,1 | 59196 | 2,1 | 46431 | 2,0 | 5 | 4 |
| NORTH AMERICA | 36 | 4,0 | 3277,6 | 3,5 | 96818 | 3,5 | 75941 | 3,3 | 3 | 3 |
| SOUTH AMERICA | 21 | 2,3 | 351,3 | 0,4 | 10526 | 0,4 | 8256 | 0,4 | 4 | 5 |
| ASIA | 105 | 11,7 | 10183,4 | 10,9 | 302953 | 10,9 | 237626 | 10,5 | 2 | 2 |
| at 31 December 2003 | 4 | 0,4 | 18,6 | 0,0 | 549 | 0,0 | 431 | 0,0 | 6 | 6 |

Table no. 13

**Increase in the issued capital of companies by foreign direct investment,
by continents according to the investors' country of origin,
during October 2004**

| Continent | Number of companies | | Amount of subscribed capital | | | | | | Ranking by: | |
|---------------|---------------------|-------|------------------------------|-------|---------------------------------|-------|---------------------------------|-------|-------------|----|
| | | | Total in local currency | | Total in equivalent of currency | | Total in equivalent of currency | | | |
| | No. | % | million ROL | % | USD | % | EURO | % | | |
| 0 | 1 | | 2 | | 3 | | 4 | | 5 | |
| Total ROMANIA | 513 | 100,0 | 12489340,5 | 100,0 | 354630169 | 100,0 | 290010830 | 100,0 | * | ** |
| EUROPE | 348 | 67,8 | 2894022,4 | 23,2 | 67351968 | 19,0 | 52828530 | 18,2 | 1 | 2 |
| AFRICA | 18 | 3,5 | 6711,5 | 0,1 | 215239 | 0,1 | 168826 | 0,1 | 4 | 5 |
| NORTH AMERICA | 22 | 4,3 | 152124,3 | 1,2 | 4503569 | 1,3 | 3532442 | 1,2 | 3 | 3 |
| SOUTH AMERICA | 10 | 1,9 | 9296309,3 | 74,4 | 278271576 | 78,5 | 218266501 | 75,3 | 5 | 1 |
| ASIA | 138 | 26,9 | 140173,0 | 1,1 | 4287817 | 1,2 | 3363214 | 1,2 | 2 | 4 |

Table no. 14

**Strike-off of companies by foreign direct investment and their issued capital,
by continents according to the investors' country of origin,
during October 2004**

| Continent | Number of companies | | Amount of subscribed capital | | | | | | Ranking by: | |
|---------------|---------------------|-------|------------------------------|-------|---------------------------------|-------|---------------------------------|-------|-------------|----|
| | | | Total in local currency | | Total in equivalent of currency | | Total in equivalent of currency | | | |
| | No. | % | million ROL | % | USD | % | EURO | % | | |
| 0 | 1 | | 2 | | 3 | | 4 | | 5 | |
| Total ROMANIA | 79 | 100,0 | 312653,3 | 100,0 | 19692796 | 100,0 | 16104451 | 100,0 | * | ** |
| EUROPE | 73 | 92,4 | 310661,3 | 99,4 | | 98,1 | 15150346 | 94,1 | 1 | 1 |
| NORTH AMERICA | 3 | 3,8 | 18,4 | *** | 10087 | 0,1 | 7912 | 0,0 | 4 | 4 |
| SOUTH AMERICA | 4 | 5,1 | 1637,1 | 0,5 | 350321 | 1,8 | 274780 | 1,7 | 3 | 2 |
| ASIA | 7 | 8,9 | 336,5 | 0,1 | 16961 | 0,1 | 13304 | 0,1 | 2 | 3 |

*) number of companies (column 1)

**) total issued capital, in equivalent of currency (column3)

*** Sub 0,01%

Note: Empty rows reveal that there are no operation in the current month

Table no. 15

**Incorporation of companies by foreign direct investment, by economical groups
of countries according to the investors' country of origin,
during October 2004**

balance account at 30 April 2004

| Economical groups | Number of companies | | Amount of subscribed capital | | | | | | Ranking by: | |
|----------------------|---------------------|------|------------------------------|------|---------------------------------|------|---------------------------------|------|-------------|----|
| | | | Total in local currency | | Total in equivalent of currency | | Total in equivalent of currency | | | |
| | No. | % | million ROL | % | USD | % | EURO | % | | |
| 0 | 1 | | 2 | | 3 | | 4 | | 5 | |
| Total ROMANIA | 895 | | 93102,5 | | 2780004 | | 2180538 | | * | ** |
| E.U. | 550 | 61,5 | 35830,2 | 38,5 | 1069592 | 38,5 | 838951 | 38,5 | 2 | 2 |
| E.A.F.T.A. | 30 | 3,4 | 7616,6 | 8,2 | 227415 | 8,2 | 178376 | 8,2 | 4 | 4 |
| O.E.C.D. | 753 | 84,1 | 76981,1 | 82,7 | 2299150 | 82,7 | 1803373 | 82,7 | 1 | 1 |
| at 31 December 2003 | 75 | 8,4 | 25039,0 | 26,9 | 750883 | 27,0 | 588966 | 27,0 | 3 | 3 |

Table no. 16

**Increase in the issued capital of companies by foreign direct investment,
by economical groups of countries according to the investors' country of origin,
during October 2004**

| Economical groups | Number of companies | | Amount of subscribed capital | | | | | | Ranking by: | |
|----------------------|---------------------|------|------------------------------|------|---------------------------------|------|---------------------------------|------|-------------|----|
| | | | Total in local currency | | Total in equivalent of currency | | Total in equivalent of currency | | | |
| | No. | % | million ROL | % | USD | % | EURO | % | | |
| 0 | 1 | | 2 | | 3 | | 4 | | 5 | |
| Total ROMANIA | 513 | | 12489340,5 | | 354630169 | | 278159514 | | * | ** |
| E.U. | 223 | 43,5 | 2614663,8 | 20,9 | 57336087 | 16,2 | 44972423 | 16,2 | 2 | 2 |
| E.A.F.T.A. | 6 | 1,2 | 1881,4 | 0,0 | 57133 | 0,0 | 44813 | 0,0 | 4 | 4 |
| O.E.C.D. | 318 | 62,0 | 2816829,6 | 22,6 | 63481366 | 17,9 | 49792565 | 17,9 | 1 | 1 |
| C.E.F.T.A. | 17 | 3,3 | 7099,0 | 0,1 | 262072 | 0,1 | 205560 | 0,1 | 3 | 3 |

Table no. 17

**Strike-off of companies by foreign direct investment and their issued capital,
by economical groups of countries according to the investors' country of origin,
during October 2004**

| Economical groups | Number of companies | | Amount of subscribed capital | | | | | | Ranking by: | |
|----------------------|---------------------|------|------------------------------|------|---------------------------------|------|---------------------------------|------|-------------|----|
| | | | Total in local currency | | Total in equivalent of currency | | Total in equivalent of currency | | | |
| | No. | % | million ROL | % | USD | % | EURO | % | | |
| 0 | 1 | | 2 | | 3 | | 4 | | 5 | |
| Total ROMANIA | 79 | | 312653,3 | | 19692796 | | 15446341 | | * | ** |
| E.U. | 49 | 62,0 | 304450,9 | 97,4 | 19098229 | 97,0 | 14979984 | 97,0 | 2 | 2 |
| E.A.F.T.A. | 1 | 1,3 | 17,5 | *** | 10000 | 0,1 | 7844 | 0,1 | 4 | 4 |
| O.E.C.D. | 69 | 87,3 | 310603,9 | 99,3 | 19317363 | 98,1 | 15151865 | 98,1 | 1 | 1 |
| C.E.F.T.A. | 11 | 13,9 | 138,2 | 0,0 | 14707 | 0,1 | 11536 | 0,1 | 3 | 3 |

*) number of companies (column 1)

**) total issued capital, in equivalent of currency (column3)

*** Less than 0.01%

Note: Each economic group's weight is calculated related to the total Romania.**The weights' sum is different from 100% due to the fact that one country might be part of more than one economical group.**

Table no. 18

**Classification* by countries of origin of investors
in companies by foreign direct investment,
incorporated during October 2004**

| No. crt. | Countries | Number of companies | | Amount of subscribed capital | | | | | |
|----------|-------------------------------------|---------------------|--------------|------------------------------|--------------|---------------------------------|--------------|---------------------------------|--------------|
| | | | | Total in local currency | | Total in equivalent of currency | | Total in equivalent of currency | |
| | | | | No. | % | million ROL | % | USD | % |
| 0 | 1 | 2 | | 3 | | 4 | | 5 | |
| | Total ROMANIA, out of which: | 895 | 100,0 | 93102,5 | 100,0 | 2780004 | 100,0 | 2180538 | 100,0 |
| 1 | HUNGARY | 70 | 7,8 | 24704,3 | 26,53 | 740868 | 26,65 | 581111 | 26,65 |
| 2 | GERMANY | 106 | 11,8 | 18454,0 | 19,82 | 548635 | 19,74 | 430330 | 19,74 |
| 3 | TURKEY | 43 | 4,8 | 7174,8 | 7,71 | 213064 | 7,66 | 167120 | 7,66 |
| 4 | FRANCE | 51 | 5,7 | 6853,7 | 7,36 | 207565 | 7,47 | 162807 | 7,47 |
| 5 | ITALY | 230 | 25,7 | 5573,8 | 5,99 | 166801 | 6,00 | 130833 | 6,00 |
| 6 | SWITZERLAND | 25 | 2,8 | 5410,8 | 5,81 | 161328 | 5,80 | 126540 | 5,80 |
| 7 | IRAQ | 6 | 0,7 | 4525,0 | 4,86 | 133771 | 4,81 | 104925 | 4,81 |
| 8 | JORDAN | 5 | 0,6 | 4263,5 | 4,58 | 127271 | 4,58 | 99827 | 4,58 |
| 9 | U.S.A. | 36 | 4,0 | 3277,6 | 3,52 | 96818 | 3,48 | 75941 | 3,48 |
| 10 | LIECHTENSTEIN | 3 | 0,3 | 2200,5 | 2,36 | 65928 | 2,37 | 51712 | 2,37 |
| 11 | TUNISIA | 1 | 0,1 | 1600,0 | 1,72 | 48252 | 1,74 | 37847 | 1,74 |
| 12 | MOLDAVIA | 27 | 3,0 | 1427,3 | 1,53 | 42428 | 1,53 | 33279 | 1,53 |
| 13 | BELGIUM | 24 | 2,7 | 1229,3 | 1,32 | 36006 | 1,30 | 28242 | 1,30 |
| 14 | NETHERLAND | 31 | 3,5 | 1006,3 | 1,08 | 29696 | 1,07 | 23293 | 1,07 |
| 15 | SWEDEN | 7 | 0,8 | 875,3 | 0,94 | 25802 | 0,93 | 20238 | 0,93 |
| 16 | AUSTRIA | 32 | 3,6 | 729,2 | 0,78 | 21828 | 0,79 | 17121 | 0,79 |
| 17 | CHINA | 21 | 2,3 | 702,9 | 0,75 | 21032 | 0,76 | 16497 | 0,76 |
| 18 | GREAT BRITAIN | 21 | 2,3 | 610,2 | 0,66 | 18420 | 0,66 | 14448 | 0,66 |
| 19 | ISRAEL | 36 | 4,0 | 495,1 | 0,53 | 14671 | 0,53 | 11507 | 0,53 |
| 20 | POLAND | 2 | 0,2 | 302,8 | 0,33 | 9061 | 0,33 | 7107 | 0,33 |
| 21 | EGYPT | 4 | 0,4 | 256,0 | 0,27 | 7745 | 0,28 | 6075 | 0,28 |
| 22 | SPAIN | 15 | 1,7 | 258,0 | 0,28 | 7676 | 0,28 | 6021 | 0,28 |
| 23 | CANADA | 14 | 1,6 | 242,3 | 0,26 | 7269 | 0,26 | 5702 | 0,26 |
| 24 | GREECE | 25 | 2,8 | 219,1 | 0,24 | 6514 | 0,23 | 5109 | 0,23 |
| 25 | CYPRUS | 20 | 2,2 | 167,6 | 0,18 | 4984 | 0,18 | 3909 | 0,18 |
| 26 | ALGERIA | 1 | 0,1 | 100,0 | 0,11 | 2994 | 0,11 | 2348 | 0,11 |
| 27 | ST. VINCENT | 1 | 0,1 | 80,0 | 0,09 | 2391 | 0,09 | 1875 | 0,09 |
| 28 | IRAN | 4 | 0,4 | 54,5 | 0,06 | 1666 | 0,06 | 1307 | 0,06 |
| 29 | LEBANON | 8 | 0,9 | 45,1 | 0,05 | 1382 | 0,05 | 1084 | 0,05 |
| 30 | A.R. OF SYRIA | 9 | 1,0 | 35,4 | 0,04 | 1308 | 0,05 | 1026 | 0,05 |
| 31 | BULGARIA | 2 | 0,2 | 30,0 | 0,03 | 897 | 0,03 | 704 | 0,03 |
| 32 | SERBIA AND MONTENEGRO | 2 | 0,2 | 21,5 | 0,02 | 646 | 0,02 | 507 | 0,02 |
| 33 | INS. VIRGINE AMR. | 1 | 0,1 | 13,6 | 0,01 | 400 | 0,01 | 314 | 0,01 |
| 34 | JAPAN | 4 | 0,4 | 12,9 | 0,01 | 390 | 0,01 | 306 | 0,01 |
| 35 | SOUTH KOREA | 2 | 0,2 | 12,0 | 0,01 | 359 | 0,01 | 282 | 0,01 |
| 36 | BANGLADESH | 2 | 0,2 | 11,0 | 0,01 | 330 | 0,01 | 259 | 0,01 |
| 37 | ATIGUA AND BARBADOS | 1 | 0,1 | 10,0 | 0,01 | 296 | 0,01 | 232 | 0,01 |
| 38 | KUWEIT | 1 | 0,1 | 10,0 | 0,01 | 295 | 0,01 | 231 | 0,01 |
| 39 | BRAZIL | 1 | 0,1 | 9,9 | 0,01 | 294 | 0,01 | 231 | 0,01 |
| 40 | IRELAND | 3 | 0,3 | 8,8 | *** | 269 | *** | 211 | *** |
| 41 | PORTUGAL | 2 | 0,2 | 7,0 | *** | 212 | *** | 166 | *** |
| 42 | ANDORRA | 2 | 0,2 | 7,0 | *** | 204 | *** | 160 | *** |
| 43 | AZERBAIDIJAN | 1 | 0,1 | 6,7 | *** | 200 | *** | 157 | *** |
| 44 | CROATIA | 2 | 0,2 | 6,5 | *** | 196 | *** | 154 | *** |
| 45 | DENMARK | 3 | 0,3 | 5,5 | *** | 168 | *** | 132 | *** |
| 46 | NORWAY | 2 | 0,2 | 5,3 | *** | 159 | *** | 125 | *** |
| 47 | VIETNAM | 2 | 0,2 | 5,3 | *** | 159 | *** | 125 | *** |
| 48 | PALESTINA | 2 | 0,2 | 5,0 | *** | 153 | *** | 120 | *** |
| 49 | AUSTRALIA | 3 | 0,3 | 5,0 | *** | 149 | *** | 117 | *** |
| 50 | RUSSIA | 2 | 0,2 | 4,5 | *** | 135 | *** | 106 | *** |

*) on countries selected upon the amount of the foreign direct investment, in equivalent of currency, ranking by a descending scale (col 4)

*** Less than 0.01%

Table no. 19

**Classification* by investors' countries of origin according to the amount
of the increase in the issued capital, during October 2004**

| No. crt. | Countries | Number of companies | | Amount of subscribed capital | | | | | | | |
|----------|-----------------------|---------------------|--------------|------------------------------|--------------|------------------|--------------|---------------------------------|--------------|---------------------------------|---|
| | | | | Total in local currency | | | | Total in equivalent of currency | | Total in equivalent of currency | |
| | | | | No. | % | million ROL | % | USD | % | EURO | % |
| 0 | 1 | 2 | | 3 | | 4 | | 5 | | | |
| | Total ROMANIA | 513 | 100,0 | 12489340,5 | 100,0 | 354630169 | 100,0 | 278159514 | 100,0 | | |
| 1 | I.VIRGINE BRIT. | 4 | 0,78 | 9296287,2 | 74,43 | 278270896 | 78,47 | 218265968 | 78,47 | | |
| 2 | GREAT BRITAIN | 12 | 2,34 | 2068122,7 | 16,56 | 61994437 | 17,48 | 48626270 | 17,48 | | |
| 3 | CYPRUS | 21 | 4,09 | 182381,0 | 1,46 | 6576250 | 1,85 | 5158181 | 1,85 | | |
| 4 | U.S.A. | 22 | 4,29 | 152124,3 | 1,22 | 4503569 | 1,27 | 3532442 | 1,27 | | |
| 5 | ITALY | 82 | 15,98 | 136408,8 | 1,09 | 4087324 | 1,15 | 3205954 | 1,15 | | |
| 6 | CHINA | 60 | 11,70 | 112280,1 | 0,90 | 3323088 | 0,94 | 2606514 | 0,94 | | |
| 7 | GIBRALTAR | 2 | 0,39 | 38727,2 | 0,31 | 1551156 | 0,44 | 1216673 | 0,44 | | |
| 8 | TURKEY | 52 | 10,14 | 48543,4 | 0,39 | 1547664 | 0,44 | 1213934 | 0,44 | | |
| 9 | NETHERLAND | 21 | 4,09 | 66977,8 | 0,54 | 1509953 | 0,43 | 1184354 | 0,43 | | |
| 10 | AUSTRIA | 21 | 4,09 | 30838,6 | 0,25 | 1081569 | 0,30 | 848345 | 0,30 | | |
| 11 | GREECE | 8 | 1,56 | 29470,9 | 0,24 | 866028 | 0,24 | 679282 | 0,24 | | |
| 12 | FRANCE | 27 | 5,26 | 3418,2 | 0,03 | 329990 | 0,09 | 258833 | 0,09 | | |
| 13 | IRAN | 17 | 3,31 | 6050,5 | 0,05 | 216224 | 0,06 | 169599 | 0,06 | | |
| 14 | SLOVAKIA | 1 | 0,19 | 6917,7 | 0,06 | 209405 | 0,06 | 164250 | 0,06 | | |
| 15 | JORDAN | 4 | 0,78 | 908,5 | *** | 170906 | 0,05 | 134053 | 0,05 | | |
| 16 | LEBANON | 9 | 1,75 | 5987,9 | 0,05 | 155523 | 0,04 | 121987 | 0,04 | | |
| 17 | SINGAPORE | 1 | 0,19 | 4200,0 | 0,03 | 125744 | 0,04 | 98629 | 0,04 | | |
| 18 | A.R. OF SYRIA | 12 | 2,34 | 4132,2 | 0,03 | 124323 | 0,04 | 97515 | 0,04 | | |
| 19 | BELGIUM | 9 | 1,75 | 5509,0 | 0,04 | 102886 | 0,03 | 80700 | 0,03 | | |
| 20 | IRAQ | 10 | 1,95 | 4218,4 | 0,03 | 102822 | 0,03 | 80650 | 0,03 | | |
| 21 | TUNISIA | 1 | 0,19 | 3446,8 | 0,03 | 92468 | 0,03 | 72529 | 0,03 | | |
| 22 | EGYPT | 6 | 1,17 | 2186,9 | 0,02 | 65598 | 0,02 | 51453 | 0,02 | | |
| 23 | ISRAEL | 19 | 3,70 | 1910,2 | 0,02 | 63618 | 0,02 | 49900 | 0,02 | | |
| 24 | HUNGARY | 11 | 2,14 | 155,9 | *** | 51904 | 0,01 | 40712 | 0,01 | | |
| 25 | SWITZERLAND | 5 | 0,97 | 1320,0 | 0,01 | 40325 | 0,01 | 31630 | 0,01 | | |
| 26 | SPAIN | 4 | 0,78 | 2820,7 | 0,02 | 31893 | *** | 25016 | *** | | |
| 27 | LUXEMBOURG | 1 | 0,19 | 1297,0 | 0,01 | 29961 | *** | 23500 | *** | | |
| 28 | SEYCHELLES | 1 | 0,19 | 925,6 | *** | 27862 | *** | 21854 | *** | | |
| 29 | SOMALIA | 2 | 0,39 | 85,1 | *** | 26515 | *** | 20797 | *** | | |
| 30 | DENMARK | 3 | 0,58 | 828,2 | *** | 25200 | *** | 19766 | *** | | |
| 31 | MOLDAVIA | 21 | 4,09 | 701,3 | *** | 20850 | *** | 16354 | *** | | |
| 32 | LIECHTENSTEIN | 1 | 0,19 | 561,4 | *** | 16808 | *** | 13184 | *** | | |
| 33 | SUDAN | 6 | 1,17 | 64,6 | *** | 2737 | *** | 2147 | *** | | |
| 34 | PAKISTAN | 2 | 0,39 | 412,2 | *** | 2241 | *** | 1758 | *** | | |
| 35 | PORTUGAL | 3 | 0,58 | 46,3 | *** | 1366 | *** | 1071 | *** | | |
| 36 | SOUTH KOREA | 1 | 0,19 | 2,1 | *** | 1200 | *** | 941 | *** | | |
| 37 | TAIWAN | 1 | 0,19 | 36,0 | *** | 1076 | *** | 844 | *** | | |
| 38 | BULGARIA | 5 | 0,97 | 25,4 | *** | 763 | *** | 598 | *** | | |
| 39 | UKRAINE | 3 | 0,58 | 22,0 | *** | 657 | *** | 515 | *** | | |
| 40 | CANADA | 4 | 0,78 | 20,1 | *** | 617 | *** | 484 | *** | | |
| 41 | TURKMENISTAN | 1 | 0,19 | 20,0 | *** | 605 | *** | 475 | *** | | |
| 42 | VIETNAM | 1 | 0,19 | 15,0 | *** | 447 | *** | 351 | *** | | |
| 43 | SWEDEN | 1 | 0,19 | 8,3 | *** | 252 | *** | 198 | *** | | |
| 44 | IRELAND | 1 | 0,19 | 5,1 | *** | 152 | *** | 119 | *** | | |
| 45 | ECUADOR | 1 | 0,19 | 2,0 | *** | 60 | *** | 47 | *** | | |
| 46 | GUINEEA | 1 | 0,19 | 2,0 | *** | 59 | *** | 46 | *** | | |
| 47 | LITHUANIA | 1 | 0,19 | 1,9 | *** | 57 | *** | 45 | *** | | |
| 48 | FORMER YUGOSLAVIE | 1 | 0,19 | 1,0 | *** | 30 | *** | 24 | *** | | |
| 49 | SERBIA AND MONTENEGRO | 1 | 0,19 | 0,4 | *** | 12 | *** | 9 | *** | | |
| 50 | I.TURKS AND CAICOS | 1 | 0,19 | 0,1 | *** | 3 | *** | 2 | *** | | |

*) on countries selected upon the amount of the foreign direct investment, in equivalent of currency, ranking by a descending scale (col 4)

*** Less than 0,01%

**Classification of the top 40 companies by foreign direct investment
in the total subscribed capital, in equivalent of currency,
during October 2004**

| No. crt. | Companies | County | Country of origin of the majority investor | Amount of subscribed capital | | |
|-------------|--|---------------------|--|------------------------------|---------------------------------------|---------------------------------------|
| | | | | Total in local currency | Total in equivalent of currency | Total in equivalent of currency |
| | | | | million ROL | thousand USD | thousand EURO |
| 0 | 1 | 2 | 3 | 4 | 5 | 6 |
| 1 | TELEMOBIL SA | ILFOV | I.VIRGINE BRIT. | 9262406,4 | 277267,7 | 217479,1 |
| 2 | SEWS ROMANIA SRL | HUNEDOARA | GREAT BRITAIN | 185805,0 | 5468,1 | 4289,0 |
| 3 | TRIPONT INVEST SRL | BUCURESTI | U.S.A. | 131680,0 | 3904,0 | 3062,2 |
| 4 | AUTOLIV ROMANIA SA | BRASOV | GERMANY | 123405,4 | 3597,4 | 2821,7 |
| 5 | DELTA NATURE RESORT SA | ILFOV | I.VIRGINE BRIT. | 49501,2 | 1504,3 | 1179,9 |
| 6 | APARATAJ ELECTRIC SA | DAMBOVITA | CYPRUS | 43819,7 | 1308,6 | 1026,4 |
| 7 | MAGNETTO WHEELS - ROMANIA SA | VALCEA | ITALY | 41000,0 | 1232,6 | 966,8 |
| 8 | MOTORACTIVE SA | BUCURESTI | NETHERLAND | 41126,9 | 1230,6 | 965,2 |
| 9 | W.S.C. (WORLD STARTEL COMMUNICATIONS) EUROPA SA | BUCURESTI | ITALY | 36722,0 | 1080,2 | 847,3 |
| 10 | BUTAN GAS INTERNATIONAL SRL | TIMIS | ITALY | 32744,8 | 973,9 | 763,9 |
| 11 | HELLENICA COSMETICS ROMANIA SRL | BUCURESTI | GREECE | 28750,4 | 842,3 | 660,6 |
| 12 | CASCADE EMPIRE SRL | ALBA | AUSTRIA | 16520,4 | 494,5 | 387,9 |
| 13 | SOCIETATEA COMERCIALA LUORANI DE SUBURSA LINIE DE CALCEPATE | BUCURESTI | CYPRUS | 13575,2 | 406,4 | 318,8 |
| 14 | EUROPAPIER ROMANIA SRL | BUCURESTI | AUSTRIA | 12328,8 | 364,4 | 285,8 |
| 15 | TMDUM SRL | TIMIS | HUNGARY | 8004,2 | 240,1 | 188,3 |
| 16 | TMBAN SRL | TIMIS | HUNGARY | 8004,2 | 240,1 | 188,3 |
| 17 | XSTER SRL | VALCEA | ITALY | 7790,0 | 232,4 | 182,3 |
| 18 | ROMKEN PRODUCTION SRL | ILFOV | TURKEY | 7370,1 | 226,6 | 177,7 |
| 19 | LAHOVARI GRUP SRL | BUCURESTI | GERMANY | 7359,5 | 218,7 | 171,6 |
| 20 | TMFAB SRL | TIMIS | HUNGARY | 6982,6 | 209,5 | 164,3 |
| 21 | TERMOSERVICE SRL | ARGES | SLOVAKIA | 6917,7 | 209,4 | 164,2 |
| 22 | METRO ASKIN IMPEX SRL | PRAHOVA | TURKEY | 6503,0 | 192,9 | 151,3 |
| 23 | AUTOMOBILE BAVARIA SRL | BRASOV | GERMANY | 5258,5 | 158,1 | 124,0 |
| 24 | JOHNSON DIVERSEY ROMANIA SRL | BUCURESTI | NETHERLAND | 4970,0 | 148,4 | 116,4 |
| 25 | ROXTUR SRL | MARAMURES | TURKEY | 4642,2 | 142,6 | 111,9 |
| 26 | JIN SHAN IMPEX SRL | ILFOV | CHINA | 4326,0 | 130,3 | 102,2 |
| 27 | LUXUS IMOB CONSTRUCT SRL | BUCURESTI | JORDAN | 4254,5 | 127,0 | 99,6 |
| 28 | DOMINION CAPITAL LAND SRL | BUCURESTI | SINGAPORE | 4200,0 | 125,7 | 98,6 |
| 29 | GOURMET COFFEE AND TEA SHOPS SERVICII SA | BUCURESTI | SWITZERLAND | 4100,0 | 123,4 | 96,8 |
| 30 | KARE CONSTRUCT SRL | CONSTANTA | TURKEY | 4110,6 | 121,0 | 94,9 |
| 31 | SEMTEST SA | ILFOV | ITALY | 3971,8 | 118,2 | 92,7 |
| 32 | NOROC STAR IMPEX SRL | BUCURESTI | CHINA | 3856,2 | 115,9 | 90,9 |
| 33 | F & F COMPANY IMPEX SRL | BUCURESTI | LEBANON | 3829,7 | 115,0 | 90,2 |
| 34 | RUN FA COMIMPEX SRL | BUCURESTI | CHINA | 3600,0 | 107,5 | 84,3 |
| 35 | CHUNFANG IMPEX SRL | BUCURESTI | CHINA | 3570,7 | 106,5 | 83,5 |
| 36 | MANHATTAN - CLUB SRL | MARAMURES | AUSTRIA | 292,2 | 103,1 | 80,8 |
| 37 | STEUA POLARA EXPOCOM SRL | BUCURESTI | CHINA | 3285,1 | 98,2 | 77,0 |
| 38 | ELECTRIC MOTORS ENGINEERING COMPANY SRL | BUCURESTI | ITALY | 3289,6 | 96,0 | 75,3 |
| 39 | TRANS-CAPA SRL | BISTRITA- NASAUD | GERMANY | 3103,2 | 93,9 | 73,7 |
| 40 | MANAR 93 PROD IMPEX SRL | BUCURESTI | TUNISIA | 3446,8 | 92,5 | 72,5 |

Table no. 21

**Number of registered companies with foreign investment capital
and amount of subscribed capital,
between 1991 and 2003**

| balance account at 30 April 2004 | Number of companies | | Amount of subscribed capital | | | | | |
|---------------------------------------|------------------------|--------------|------------------------------|--------------|-------------------|--------------|-------------------|--------------|
| | | | Total on ROL | | Total on currency | | Total on currency | |
| | No. | % | millions ROL | % | thousands USD | % | thousands EURO | % |
| 0 | 1 | 2 | 3 | 4 | | | | |
| 1991 - 2003, out of which: | 97389 | 100,0 | 180211838,4 | 100,0 | 10501587,7 | 100,0 | 8237078,5 | 100,0 |
| 1991 | 5491 | 5,6 | 1278556,1 | 0,7 | 880396,5 | 8,4 | 690552,3 | 8,4 |
| 1992 | 11797 | 12,1 | 586250,2 | 0,3 | 540021,0 | 5,1 | 423573,6 | 5,1 |
| 1993 | 10604 | 10,9 | 895070,7 | 0,5 | 414095,4 | 3,9 | 324802,0 | 3,9 |
| 1994 | 11081 | 11,4 | 2344217,2 | 1,3 | 908773,6 | 8,7 | 712810,3 | 8,7 |
| 1995 | 3396 | 3,5 | 731514,1 | 0,4 | 283228,8 | 2,7 | 222154,8 | 2,7 |
| 1996 | 3626 | 3,7 | 2278311,6 | 1,3 | 575229,4 | 5,5 | 451189,8 | 5,5 |
| 1997 | 5261 | 5,4 | 2416970,7 | 1,3 | 374629,8 | 3,6 | 293846,5 | 3,6 |
| 1998 | 8843 | 9,1 | 7426937,3 | 4,1 | 737737,9 | 7,0 | 578655,8 | 7,0 |
| 1999 | 7411 | 7,6 | 12310008,6 | 6,8 | 950961,8 | 9,1 | 745901,2 | 9,1 |
| 2000 | 8591 | 8,8 | 18373740,4 | 10,2 | 829181,3 | 7,9 | 650380,8 | 7,9 |
| 2001 | 7173 | 7,4 | 50494362,2 | 28,0 | 1611818,4 | 15,3 | 1264254,1 | 15,3 |
| 2002 | 7513 | 7,7 | 35678101,0 | 19,8 | 1081967,8 | 10,3 | 848657,7 | 10,3 |
| 2003 | 6602 | 6,8 | 45397798,4 | 25,2 | 1313545,9 | 12,5 | 1030299,5 | 12,5 |

Note: column no. 1 representing number of new registered from that time. The amount of subscribed capital is composed by initial subscribed capital added with any increase of capital and decreased with the subscribed capital of erased companies

Diagram no. 9

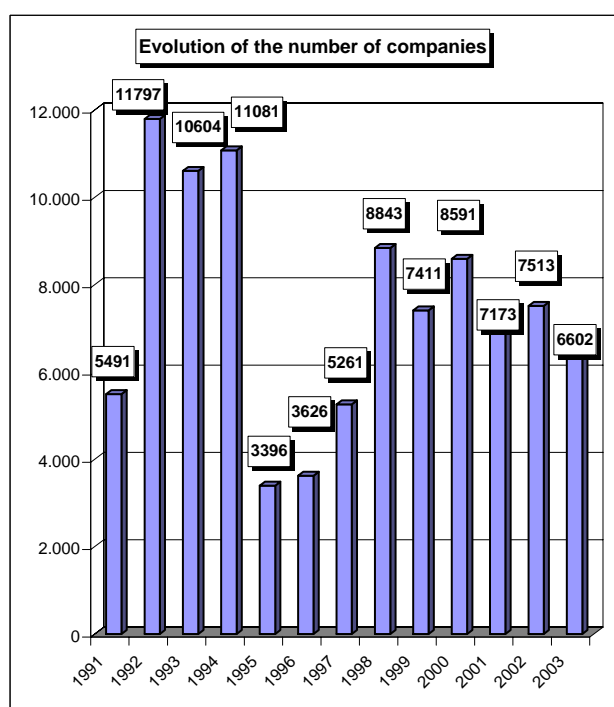


Diagram no. 10

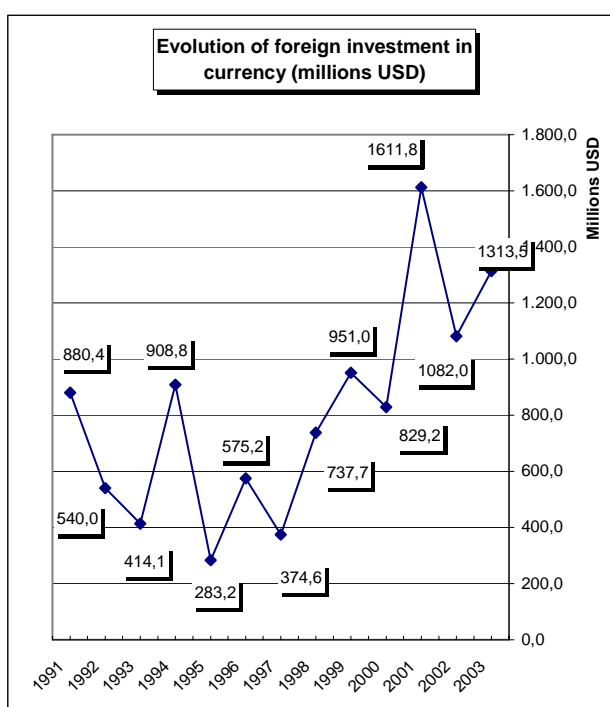


Table no. 22

**Number of registered companies, with foreign capital investment
and the value of the invested capital,
between 1991 and 2003**

| balance account at 30 April 2004 | Number of companies | | Amount of subscribed capital | | | | | | Order by: | |
|-------------------------------------|------------------------|--------------|------------------------------|--------------|-------------------|--------------|-------------------|--------------|-----------|----|
| | | | Total on ROL | | Total on currency | | Total on currency | | | |
| | No. | % | millions ROL | % | thousands USD | % | thousands EURO | % | | |
| 0 | 1 | 2 | | 3 | | 4 | | 5 | | |
| Total ROMANIA | 97389 | 100,0 | 180211838,4 | 100,0 | 10501587,7 | 100,0 | 8237078,5 | 100,0 | * | ** |
| ALBA | 848 | 0,9 | 1100211,8 | 0,6 | 88300,4 | 0,8 | 69259,7 | 0,8 | 18 | 19 |
| ARAD | 2571 | 2,6 | 2097254,5 | 1,2 | 142051,1 | 1,4 | 111419,9 | 1,4 | 5 | 13 |
| ARGES | 823 | 0,8 | 17670809,8 | 9,8 | 612863,0 | 5,8 | 480708,3 | 5,8 | 19 | 3 |
| BACAU | 730 | 0,7 | 6035047,3 | 3,3 | 187050,5 | 1,8 | 146715,9 | 1,8 | 22 | 11 |
| BIHOR | 2494 | 2,6 | 4321946,5 | 2,4 | 194008,1 | 1,8 | 152173,2 | 1,8 | 6 | 10 |
| BISTRITA-NASAUD | 597 | 0,6 | 210449,6 | 0,1 | 13781,0 | 0,1 | 10809,3 | 0,1 | 25 | 37 |
| BOTOSANI | 247 | 0,3 | 121430,4 | 0,1 | 6191,2 | 0,1 | 4856,1 | 0,1 | 37 | 41 |
| BRASOV | 2425 | 2,5 | 1791327,7 | 1,0 | 121660,9 | 1,2 | 95426,6 | 1,2 | 7 | 15 |
| BRAILA | 400 | 0,4 | 468050,3 | 0,3 | 32153,2 | 0,3 | 25219,9 | 0,3 | 29 | 31 |
| BUZAU | 455 | 0,5 | 633220,8 | 0,4 | 27703,0 | 0,3 | 21729,3 | 0,3 | 28 | 33 |
| CARAS-SEVERIN | 673 | 0,7 | 337508,5 | 0,2 | 47891,7 | 0,5 | 37564,6 | 0,5 | 23 | 26 |
| CALARASI | 259 | 0,3 | 1249158,7 | 0,7 | 44869,2 | 0,4 | 35193,8 | 0,4 | 36 | 28 |
| CLUJ | 4007 | 4,1 | 4885585,1 | 2,7 | 272236,8 | 2,6 | 213533,1 | 2,6 | 3 | 8 |
| CONSTANTA | 3412 | 3,5 | 13063131,8 | 7,2 | 493813,5 | 4,7 | 387330,1 | 4,7 | 4 | 5 |
| COVASNA | 520 | 0,5 | 378717,1 | 0,2 | 43868,7 | 0,4 | 34409,1 | 0,4 | 26 | 29 |
| DAMBOVITA | 467 | 0,5 | 4256053,7 | 2,4 | 153633,7 | 1,5 | 120504,9 | 1,5 | 27 | 12 |
| DOLJ | 1109 | 1,1 | 804554,6 | 0,4 | 194085,5 | 1,8 | 152233,9 | 1,8 | 15 | 9 |
| GALATI | 754 | 0,8 | 19808517,6 | 11,0 | 654175,7 | 6,2 | 513112,6 | 6,2 | 21 | 2 |
| GIURGIU | 268 | 0,3 | 266158,5 | 0,1 | 12186,0 | 0,1 | 9558,3 | 0,1 | 35 | 39 |
| GORJ | 237 | 0,2 | 22922,3 | 0,0 | 1907,1 | 0,0 | 1495,9 | 0,0 | 39 | 42 |
| HARGHITA | 1229 | 1,3 | 732824,2 | 0,4 | 47636,4 | 0,5 | 37364,3 | 0,5 | 13 | 27 |
| HUNEDOARA | 919 | 0,9 | 865261,2 | 0,5 | 68112,3 | 0,6 | 53424,9 | 0,6 | 17 | 22 |
| IALOMITA | 205 | 0,2 | 117230,6 | 0,1 | 11098,2 | 0,1 | 8705,0 | 0,1 | 40 | 40 |
| IASI | 1292 | 1,3 | 718556,6 | 0,4 | 75066,8 | 0,7 | 58879,8 | 0,7 | 12 | 20 |
| MARAMURES | 1220 | 1,3 | 2220387,8 | 1,2 | 90755,5 | 0,9 | 71185,4 | 0,9 | 14 | 18 |
| MEHEDINTI | 353 | 0,4 | 743159,3 | 0,4 | 28556,7 | 0,3 | 22398,9 | 0,3 | 31 | 32 |
| MURES | 1767 | 1,8 | 2576952,9 | 1,4 | 121733,5 | 1,2 | 95483,5 | 1,2 | 10 | 14 |
| NEAMT | 604 | 0,6 | 1840689,6 | 1,0 | 120686,6 | 1,1 | 94662,4 | 1,1 | 24 | 16 |
| OLT | 299 | 0,3 | 1982970,4 | 1,1 | 70280,8 | 0,7 | 55125,8 | 0,7 | 34 | 21 |
| PRAHOVA | 1549 | 1,6 | 5792563,7 | 3,2 | 387296,1 | 3,7 | 303781,6 | 3,7 | 11 | 7 |
| SALAJ | 322 | 0,3 | 305884,0 | 0,2 | 17249,2 | 0,2 | 13529,7 | 0,2 | 33 | 36 |
| SATU MARE | 979 | 1,0 | 1022185,9 | 0,6 | 66633,3 | 0,6 | 52264,9 | 0,6 | 16 | 23 |
| SIBIU | 1805 | 1,9 | 931219,7 | 0,5 | 94611,6 | 0,9 | 74210,1 | 0,9 | 9 | 17 |
| SUCEAVA | 812 | 0,8 | 780709,9 | 0,4 | 49066,4 | 0,5 | 38486,0 | 0,5 | 20 | 25 |
| TELEORMAN | 186 | 0,2 | 902030,2 | 0,5 | 42339,3 | 0,4 | 33209,4 | 0,4 | 41 | 30 |
| TIMIS | 5953 | 6,1 | 7027636,3 | 3,9 | 491269,6 | 4,7 | 385334,7 | 4,7 | 2 | 6 |
| TULCEA | 243 | 0,2 | 221124,6 | 0,1 | 12832,9 | 0,1 | 10065,7 | 0,1 | | 38 |
| VASLUI | 183 | 0,2 | 532839,7 | 0,3 | 23166,4 | 0,2 | 18170,9 | 0,2 | 42 | 35 |
| VALCEA | 372 | 0,4 | 460942,9 | 0,3 | 50729,2 | 0,5 | 39790,2 | 0,5 | 30 | 24 |
| VRANCEA | 323 | 0,3 | 143581,0 | 0,1 | 27027,3 | 0,3 | 21199,2 | 0,3 | 32 | 34 |
| MUN. BUCURESTI | 51089 | 52,5 | 62977120,6 | 34,9 | 4676725,7 | 44,5 | 3668260,2 | 44,5 | 1 | 1 |
| ILFOV | 2389 | 2,5 | 7793910,5 | 4,3 | 584283,3 | 5,6 | 458291,4 | 5,6 | 8 | 4 |

*) number of companies

**) capital in equivalent currency

Table no. 23

**Number of registered companies, with foreign capital investment
and the value of the invested capital, on economic development areas,
between 1991 and 2003**

| Economic development areas | Number of companies | | Amount of subscribed capital | | | | | | Order by: | |
|----------------------------|---------------------|--------------|------------------------------|--------------|-------------------|--------------|-------------------|--------------|-----------|----|
| | | | Total on ROL | | Total on currency | | Total on currency | | | |
| | No. | % | millions ROL | % | thousands USD | % | thousands EURO | % | | |
| 0 | 1 | | 2 | | 3 | | 4 | | 5 | |
| Total ROMANIA | 97389 | 100,0 | 180211838,4 | 100,0 | 10501587,7 | 100,0 | 8237078,5 | 100,0 | * | ** |
| NORTH-EAST | 3868 | 4,0 | 10029273,6 | 5,6 | 461227,9 | 4,4 | 361771,0 | 4,4 | 6 | 7 |
| SOUTH-EAST | 5587 | 5,7 | 34337626,1 | 19,1 | 1247705,6 | 11,9 | 978656,7 | 11,9 | 5 | 3 |
| SOUTH-MUNTENIA | 3757 | 3,9 | 30254005,2 | 16,8 | 1264285,6 | 12,0 | 991661,5 | 12,0 | 7 | 2 |
| SOUTH-WEST OLTENIA | 2370 | 2,4 | 4014549,5 | 2,2 | 345559,3 | 3,3 | 271044,7 | 3,3 | 8 | 8 |
| WEST | 10116 | 10,4 | 10327660,5 | 5,7 | 749324,8 | 7,1 | 587744,2 | 7,1 | 2 | 4 |
| at 31 December 2003 | 9619 | 9,9 | 12966438,9 | 7,2 | 654663,9 | 6,2 | 513495,5 | 6,2 | 3 | 5 |
| CENTER | 8594 | 8,8 | 7511253,5 | 4,2 | 517811,5 | 4,9 | 406153,3 | 4,9 | 4 | 6 |
| BUCHAREST-ILFOV | 53478 | 54,9 | 70771031,1 | 39,3 | 5261009,0 | 50,1 | 4126551,6 | 50,1 | 1 | 1 |

Table no. 24

**Number of registered companies, with foreign capital investment
and the value of the invested capital, on continents
between 1991 and 2003**

| Continent | Number of companies | | Amount of subscribed capital | | | | | | Order by: | |
|----------------------|---------------------|--------------|------------------------------|--------------|-------------------|--------------|-------------------|--------------|-----------|----|
| | | | Total on ROL | | Total on currency | | Total on currency | | | |
| | No. | % | millions ROL | % | thousands USD | % | thousands EURO | % | | |
| 0 | 1 | | 2 | | 3 | | 4 | | 5 | |
| Total ROMANIA | 97389 | 100,0 | 180211838,4 | 100,0 | 10501587,7 | 100,0 | 8237078,5 | 100,0 | * | ** |
| EUROPE | 60591 | 62,2 | 141911783,0 | 78,7 | 8253020,1 | 78,6 | 6473380,6 | 78,6 | 1 | 1 |
| AFRICA | 2161 | 2,2 | 238777,4 | 0,1 | 33383,2 | 0,3 | 26184,6 | 0,3 | 4 | 6 |
| NORTH AMERICA | 3808 | 3,9 | 7053908,2 | 3,9 | 706896,3 | 6,7 | 554464,8 | 6,7 | 3 | 2 |
| SOUTH AMERICA | 1523 | 1,6 | 3996857,1 | 2,2 | 215663,1 | 2,1 | 169158,6 | 2,1 | 5 | 5 |
| ASIA | 32931 | 33,8 | 6891557,4 | 3,8 | 647255,8 | 6,2 | 507684,9 | 6,2 | 2 | 3 |
| OCEANIA | 470 | 0,5 | 20118412,2 | 11,2 | 645256,8 | 6,1 | 506116,9 | 6,1 | 6 | 4 |

Table no. 25

**Number of registered companies, with foreign capital investment
and the value of the invested capital, on economic groups,
between 1991 and 2003**

| Economic groups | Number of companies | | Amount of subscribed capital | | | | | | | |
|----------------------|---------------------|------|------------------------------|------|-------------------|------|-------------------|------|---|----|
| | | | Total on ROL | | Total on currency | | Total on currency | | | |
| | No. | % | millions ROL | % | thousands USD | % | thousands EURO | % | | |
| 0 | 1 | | 2 | | 3 | | 4 | | 5 | |
| Total ROMANIA | 97389 | | 180211838,4 | | 10501587,7 | | 8237078,5 | | * | ** |
| U.E. | 40501 | 41,6 | 116489948,9 | 64,6 | 6453203,7 | 61,4 | 5061667,5 | 61,4 | 2 | 2 |
| A.E.L.S. | 1564 | 1,6 | 6734073,2 | 3,7 | 388754,1 | 3,7 | 304925,1 | 3,7 | 4 | 3 |
| O.E.C.D. | 60777 | 62,4 | 141383014,2 | 78,5 | 8555102,1 | 81,5 | 6710323,2 | 81,5 | 1 | 1 |
| C.E.F.T.A. | 5457 | 5,6 | 5449309,7 | 3,0 | 298133,3 | 2,8 | 233845,4 | 2,8 | 3 | 4 |

Note: Each economic group's weight is calculated in total Romania.

The weights sum is different from 100% because each country may be part of one or many economic groups

*) number of companies

**) capital in equivalent currency

*** Less than 0.01%

Diagram no. 11

Percentage of companies with foreign investment, between 1991 and 2003, on fields of activity*

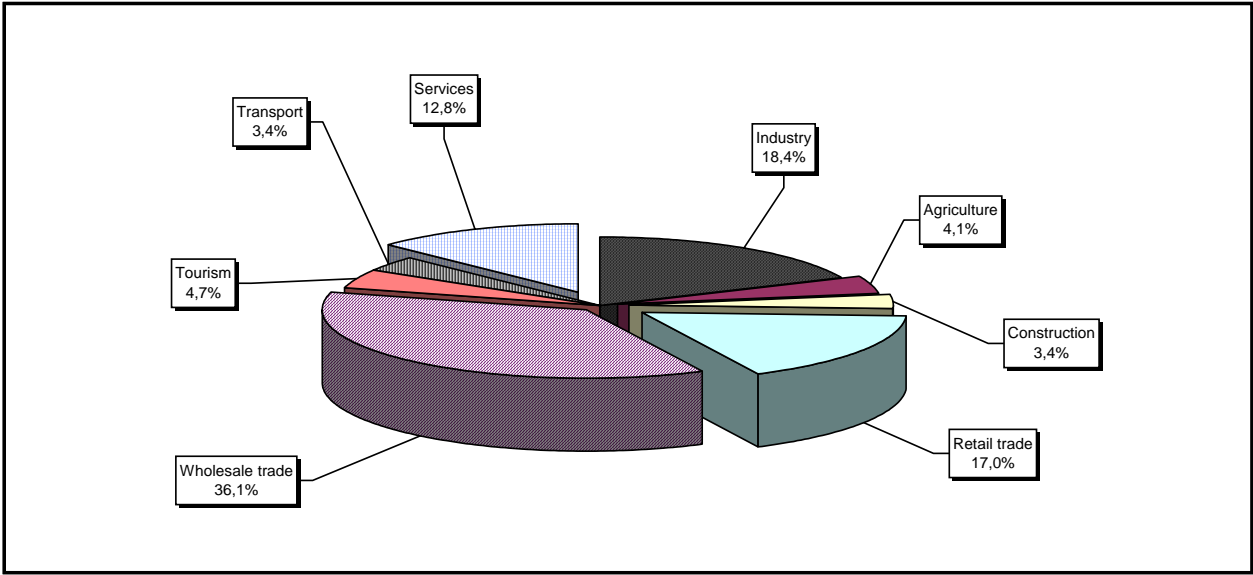
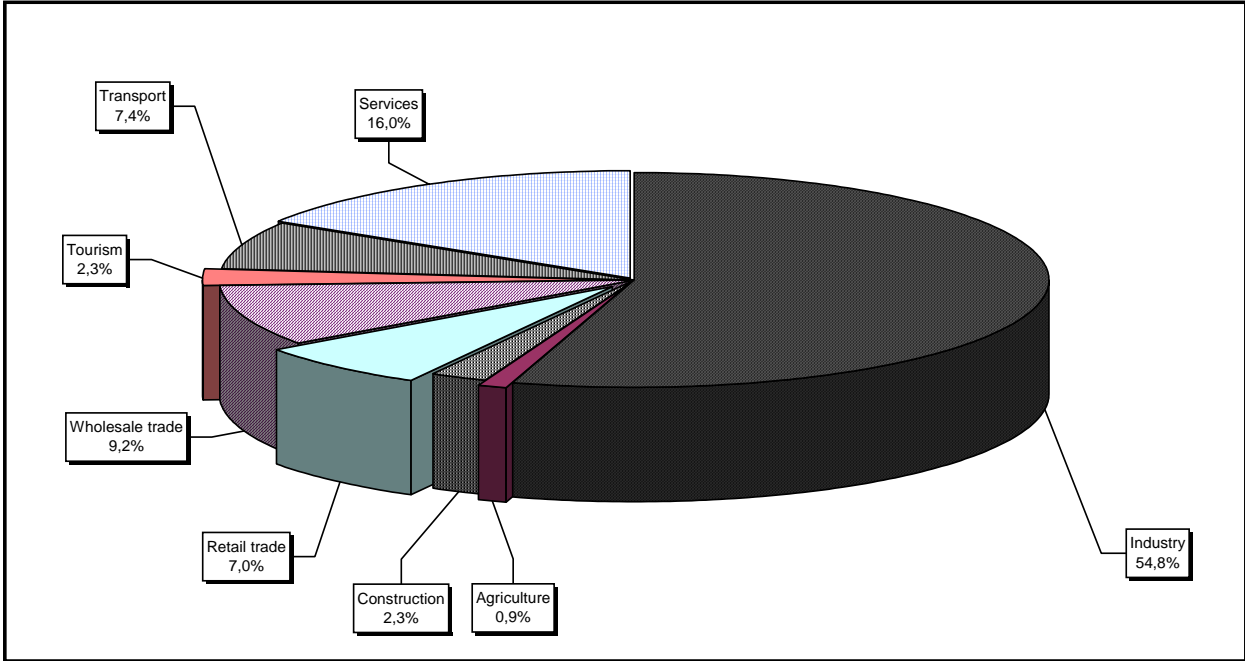


Diagram no. 12

Percentage of foreign currency invested capital** in companies with foreign investment, between 1991 and 2003, on fields of activity



*) Calculated on main activity

**) Calculated on the total amount in currency

Table no. 26

**Countries classification on foreign
investment capital registered
between 1991 and December 2003**

| No. crt. | Countries | Number of companies | | Amount of subscribed capital | | | | | |
|-------------|-------------------------------------|------------------------|---------------|------------------------------|---------------|-------------------|---------------|-------------------|---------------|
| | | | | Total on ROL | | Total on currency | | Total on currency | |
| | | No. | % | millions ROL | % | thousands USD | % | thousands EURO | % |
| 0 | 1 | 2 | 3 | 4 | 5 | 6 | 7 | 8 | 9 |
| | Total ROMANIA, out of which: | 97389 | 100,00 | 180211838,4 | 100,00 | 10501587,7 | 100,00 | 8237078,5 | 100,00 |
| 1 | NETHERLAND | 1747 | 1,79 | 34753315,5 | 19,28 | 1864373,6 | 17,75 | 1462349,5 | 17,75 |
| 2 | FRANCE | 3161 | 3,25 | 23077870,6 | 12,81 | 1067596,3 | 10,17 | 837385,3 | 10,17 |
| 3 | GERMANY | 10968 | 11,26 | 13357185,7 | 7,41 | 885167,8 | 8,43 | 694294,7 | 8,43 |
| 4 | U.S.A. | 3808 | 3,91 | 7053908,2 | 3,91 | 706896,3 | 6,73 | 554464,8 | 6,73 |
| 5 | ITALY | 14199 | 14,58 | 8155893,2 | 4,53 | 638428,3 | 6,08 | 500760,9 | 6,08 |
| 6 | AUSTRIA | 2792 | 2,87 | 13692029,1 | 7,60 | 602249,0 | 5,73 | 472383,1 | 5,73 |
| 7 | ANTILELE OLANDEZE | 9 | *** | 19068759,7 | 10,58 | 598478,8 | 5,70 | 469425,9 | 5,70 |
| 8 | CYPRUS | 1152 | 1,18 | 7758803,0 | 4,31 | 504574,2 | 4,80 | 395770,4 | 4,80 |
| 9 | GREAT BRITAIN | 1665 | 1,71 | 8450920,9 | 4,69 | 448936,1 | 4,27 | 352129,8 | 4,27 |
| 10 | TURKEY | 8689 | 8,92 | 4198784,9 | 2,33 | 438175,6 | 4,17 | 343689,7 | 4,17 |
| 11 | GREECE | 2561 | 2,63 | 5322352,7 | 2,95 | 317222,1 | 3,02 | 248817,9 | 3,02 |
| 12 | SWITZERLAND | 1257 | 1,29 | 5827795,5 | 3,23 | 311706,1 | 2,97 | 244491,4 | 2,97 |
| 13 | HUNGARY | 4405 | 4,52 | 5048546,5 | 2,80 | 265494,4 | 2,53 | 208244,5 | 2,53 |
| 14 | SOUTH KOREA | 82 | 0,08 | 481704,4 | 0,27 | 218348,4 | 2,08 | 171264,9 | 2,08 |
| 15 | LUXEMBOURG | 219 | 0,22 | 2972457,2 | 1,65 | 193979,4 | 1,85 | 152150,6 | 1,85 |
| 16 | SPAIN | 629 | 0,65 | 956796,3 | 0,53 | 160506,6 | 1,53 | 125895,7 | 1,53 |
| 17 | I.VIRGINE BRIT. | 191 | 0,20 | 3269391,7 | 1,81 | 123487,3 | 1,18 | 96859,1 | 1,18 |
| 18 | SWEDEN | 785 | 0,81 | 2452963,9 | 1,36 | 107409,8 | 1,02 | 84248,5 | 1,02 |
| 19 | CHINA | 8222 | 8,44 | 2412739,3 | 1,34 | 105587,6 | 1,01 | 82819,2 | 1,01 |
| 20 | WITH OUT CITIZENSHIP | 21 | 0,02 | 7635,2 | *** | 75690,3 | 0,72 | 59368,9 | 0,72 |
| 21 | A.R. OF SYRIA | 5263 | 5,40 | 565690,5 | 0,31 | 64108,0 | 0,61 | 50284,1 | 0,61 |
| 22 | PORTUGAL | 93 | 0,10 | 1844146,8 | 1,02 | 64088,3 | 0,61 | 50268,6 | 0,61 |
| 23 | CANADA | 896 | 0,92 | 447137,2 | 0,25 | 59250,7 | 0,56 | 46474,2 | 0,56 |
| 24 | BELGIUM | 1167 | 1,20 | 746044,2 | 0,41 | 58919,3 | 0,56 | 46214,2 | 0,56 |
| 25 | LIECHTENSTEIN | 151 | 0,16 | 671538,2 | 0,37 | 58848,5 | 0,56 | 46158,7 | 0,56 |
| 26 | JAPAN | 132 | 0,14 | 1372109,3 | 0,76 | 56314,2 | 0,54 | 44170,9 | 0,54 |
| 27 | IRAQ | 5785 | 5,94 | 562902,8 | 0,31 | 52112,4 | 0,50 | 40875,1 | 0,50 |
| 28 | LEBANON | 3307 | 3,40 | 527296,1 | 0,29 | 46397,6 | 0,44 | 36392,7 | 0,44 |
| 29 | ISRAEL | 2571 | 2,64 | 238016,0 | 0,13 | 28517,4 | 0,27 | 22368,1 | 0,27 |
| 30 | MARSHALL ISLANDS | 7 | *** | 804183,8 | 0,45 | 25249,4 | 0,24 | 19804,7 | 0,24 |
| 31 | GIBRALTAR | 26 | 0,03 | 429517,8 | 0,24 | 24473,3 | 0,23 | 19196,0 | 0,23 |
| 32 | IRELAND | 199 | 0,20 | 232099,9 | 0,13 | 24048,1 | 0,23 | 18862,5 | 0,23 |
| 33 | FORMER YUGOSLAVIE | 729 | 0,75 | 89809,1 | 0,05 | 22692,4 | 0,22 | 17799,1 | 0,22 |
| 34 | IRAN | 2590 | 2,66 | 172643,3 | 0,10 | 20426,8 | 0,19 | 16022,1 | 0,19 |
| 35 | DENMARK | 262 | 0,27 | 438462,1 | 0,24 | 18309,6 | 0,17 | 14361,4 | 0,17 |
| 36 | PANAMA | 115 | 0,12 | 132734,6 | 0,07 | 17832,2 | 0,17 | 13987,0 | 0,17 |
| 37 | MONACO | 29 | 0,03 | 302808,6 | 0,17 | 15470,9 | 0,15 | 12134,8 | 0,15 |
| 38 | JORDAN | 3052 | 3,13 | 122907,4 | 0,07 | 15135,8 | 0,14 | 11872,0 | 0,14 |
| 39 | MOLDAVIA | 1594 | 1,64 | 137586,7 | 0,08 | 14682,4 | 0,14 | 11516,3 | 0,14 |
| 40 | ICELAND | 12 | 0,01 | 92321,0 | 0,05 | 12206,4 | 0,12 | 9574,3 | 0,12 |
| 41 | KUWEIT | 146 | 0,15 | 28024,4 | 0,02 | 12042,0 | 0,11 | 9445,3 | 0,11 |
| 42 | EGYPT | 1275 | 1,31 | 102151,5 | 0,06 | 10769,9 | 0,10 | 8447,5 | 0,10 |
| 43 | BULGARIA | 513 | 0,53 | 81884,5 | 0,05 | 10291,2 | 0,10 | 8072,0 | 0,10 |
| 44 | CZECH REPUBLIC | 208 | 0,21 | 77374,4 | 0,04 | 10008,2 | 0,10 | 7850,1 | 0,10 |
| 45 | AUSTRALIA | 400 | 0,41 | 36541,3 | 0,02 | 9404,9 | 0,09 | 7376,9 | 0,09 |
| 46 | CAMEROON | 11 | 0,01 | 31887,3 | 0,02 | 9045,5 | 0,09 | 7095,0 | 0,09 |
| 47 | POLAND | 221 | 0,23 | 114098,0 | 0,06 | 7989,4 | 0,08 | 6266,6 | 0,08 |
| 48 | INS. VIRGINE AMR. | 34 | 0,03 | 89609,8 | 0,05 | 7988,8 | 0,08 | 6266,2 | 0,08 |
| 49 | CAYMAN ISLANDS | 8 | *** | 52718,3 | 0,03 | 6461,1 | 0,06 | 5067,9 | 0,06 |
| 50 | THAILANDA | 18 | 0,02 | 139498,4 | 0,08 | 6180,1 | 0,06 | 4847,5 | 0,06 |
| 51 | NORWAY | 144 | 0,15 | 142418,5 | 0,08 | 5993,0 | 0,06 | 4700,7 | 0,06 |
| 52 | LIBERIA | 34 | 0,03 | 13793,2 | *** | 5145,0 | 0,05 | 4035,6 | 0,05 |
| 53 | PAKISTAN | 656 | 0,67 | 64218,8 | 0,04 | 4612,3 | 0,04 | 3617,7 | 0,04 |
| 54 | BAHAMAS | 25 | 0,03 | 60366,9 | 0,03 | 4295,0 | 0,04 | 3368,8 | 0,04 |

