



MINISTRY OF JUSTICE

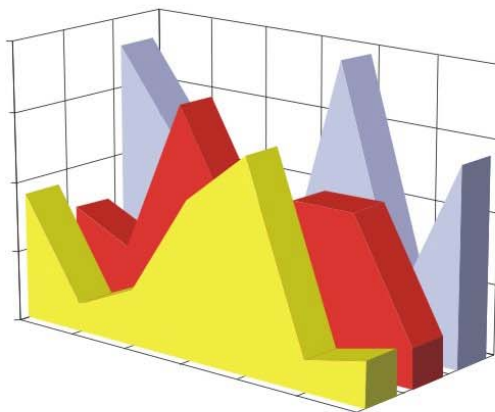
THE NATIONAL TRADE REGISTER OFFICE

Bucharest, 2, Octavian Goga Blvd., sector 3; Phone: +40 - 21 - 320.60.13; Fax: +40 - 21 - 320.58.29; Website: www.onrc.ro; E-mail: onrc@onrc.ro

COMPANIES BY FOREIGN DIRECT INVESTMENT

STATISTICAL SYNTHESIS

**OF THE NATIONAL TRADE REGISTER'S DATA
ON OCTOBER 2003 - PROVISORY DATA**



- No. 66 -

**MINISTRY OF JUSTICE
THE NATIONAL TRADE REGISTER OFFICE**

- Operations such as incorporation of companies, changes in statutory documents and strike-off dissolution of companies are being regulated by Law No.26/1990 reissued, Law No.31/1990, reissued, OUG No.76/2001, reissued and Methodology Norms No. P/608/1998.

- This synthesis presents the trends on operations regarding companies by foreign direct investment registered in The Trade Register Office attached to the law court of Bucharest and in The Trade Register Offices attached to the law court in each county of Romania.

- Information provided by the Central Trade Register concern operations compulsory by law to be registered in the trade registers attached to the law courts.

• No part of the content of this publication, in original or in any modified format, may be reproduced, stored in a retrieval system, or transmitted, in any form or by any means, without the prior permission in writing of The Ministry of Justice – The National Trade Register Office.

• The content of this publication may be referred to in articles, studies, books, as supporting or explanatory data under the condition only, the source of the information to be clearly and precisely specified.

Printed: October 2003

Table of Contents

	Page
1 Explanatory Note	1
2.1 Tables and statistical graphics for October 2003	3
Table No.1 – Number of companies by foreign direct investment and the amount of the subscribed capital, balance account at 31 of October 2003	3
Diagram No. 1 – The structure of the number of companies	3
Diagram No. 2 – The structure of investment, in equivalent of currency	3
Table No.2 – Classification of companies by foreign direct investment by the investors' countries of origin, balance account at 31 of October 2003	4
Diagram No. 3 – The structure upon sector of activity of companies by foreign direct investment, incorporated between 1991 and October 2003	5
Diagram No. 4 – The structure upon sector of activity in the amount of subscribed capital in companies by foreign direct investment, during 1991-October 2003	5
Table No. 3 – The number of companies by foreign direct investment and the amount of the subscribed capital, balance account at the end of each month of 2003	6
Diagram No. 5 – Trend in the number of companies' balance account	6
Diagram No. 6 – Trend of foreign investment balance account, in equivalent of currency	6
Table No. 4 – Comparative data on new companies by foreign direct investment and the subscribed capital, between January – October 2002 and 2003	7
Diagram No. 7 – Dynamics of the number of new companies by foreign direct investment, between January – October and 2003	7
Diagram No. 8 – Dynamics of the amount of foreign direct investment in new companies, between January – October 2002 and 2003	7
Table No. 5 – Incorporation of companies by foreign direct investment, during October 2003	8
Table No. 6 – Statutory increase of the issued capital, in companies by foreign direct investment during October 2003	9
Table No. 7 – Strike-off of companies by foreign direct investment, from the trade register, during October 2003	10
Table No. 8 – Changes by cession in the issued capital of the companies by foreign direct investment, during October 2003	11
Table No. 9 – Incorporation of companies by foreign direct investment, according to the development regions, during October 2003	12
Table No. 10 – Statutory increase in the issued capital of companies by foreign direct investment according to the development regions, during October 2003	12
Table No. 11 – Strike-off of companies by foreign direct investment and the amount of their issued capital, according to the development regions, during October 2003	12
Table No. 12 – Incorporation of companies by foreign direct investment, by continents according to the investors' country of origin, during October 2003	13

	Page
Table No. 13 – Increase in the issued capital of companies by foreign direct investment, by continents according to the investors’ country of origin, during October 2003	13
Table No. 14 – Strike-off of companies by foreign direct investment and their issued capital, by continents according to the investors’ country of origin, during October 2003	13
Table No. 15 – Incorporation of companies by foreign direct investment, by economical groups of countries according to the investors’ country of origin, during October 2003	14
Table No. 16 – Increase in the issued capital of companies by foreign direct investment, by economical groups of countries according to the investors’ country of origin, during October 2003	14
Table No. 17 – Strike-off of companies by foreign direct investment and their issued capital, by economical groups of countries according to the investors’ country of origin, during October 2003	14
Table No. 18 – Classification by countries of origin of investors in companies by foreign direct investment, incorporated during October 2003	15
Table No. 19 – Classification by investors’ countries of origin according to the amount of the increase in the issued capital, during October 2003	16
Table No. 20 – Classification of the top 40 companies by foreign direct investment in the total subscribed capital, in equivalent of currency, during October 2003	17
2.2 Cumulative data for 1991 – 2002	18
Table No. 21 – Number of registered companies with foreign investment capital and amount of subscribed capital, between 1991 and 2002	18
Diagram No. 9 – Evolution of the number of companies	18
Diagram No. 10 – Evolution of foreign investment	18
Table No. 22 – Number of registered companies, with foreign capital investment and the value of the invested capital, between 1991 and 2002	19
Table No. 23 – Number of registered companies, with foreign capital investment and the value of the invested capital, on economic development areas, between 1991 and 2002	20
Table No. 24 – Number of registered companies, with foreign capital investment and the value of the invested capital, on continents between 1991 and 2002	20
Table No. 25 – Number of registered companies, with foreign capital investment and the value of the invested capital, on economic groups, between 1991 and 2002	20
Diagram No. 11 – Percentage of companies with foreign investment, between 1991 and 2002, on fields of activity	21
Diagram No. 12– Percentage of foreign currency invested capital in companies with foreign investment, between 1991 and 2002, on fields of activity	21
Table No. 26 – Countries classification on foreign investment capital registered between 1991 and December 2002	22

Explanatory Note

- **“Company by foreign direct investment”** should be understood as any company partially or entirely set-up with the contribution in issued capital of physical or legal persons, resident or having the registered office outside Romania’s state frontiers.

- **“Foreign investor”** is any physical or legal person resident or having the business headquarter outside Romania’s borders, being associate/shareholder in a company registered in Romania.

- **“Social capital”** known as well as “issued capital” or “initial capital” is the total contribution in cash and assets subscribed by shareholders/associates while setting-up and registering a company or while increasing the initial capital during the company’s life.

The capital *subscribed* by a foreign investor should be, due to the Romanian legislation in force, in local currency ROL or/and in other convertible currency.

The increase in capital by changes in the statutory documents includes:

- foreign investors’ contributions from new own resources, in cash and/or assets, in ROL and/or currency;
- contributions of foreign investors from dividends obtained in Romania;
- getting in possession of equities/shares by a non-resident person from a resident one.

The changes in capital by decrease/(increase) through cession include:

- the contributions in capital of non-resident associates/shareholders yielded to/(received from) resident associates/shareholders, in ROL/currency;

- The **foreign direct investment in Romania (I_s)** equals to the total value of the direct foreign investment subscribed in the new registered company (I) *plus* the increase in issued capital through statutory documents(M), *plus/minus* the cession of the issued capital *by/to* resident associates/shareholders (C), *minus* the subscribed capital in the companies being struck-off from the Trade Register (R), that is:

$$I_s = I + M \pm C - R$$

Usual Terms:

- **incorporation** – represents the registration of the company in the trade registry awarding the quality of legal person.

- **other statutory documents** – represent the official registration of the changes occurred in a company’s life, such as: changes of the registered office address, increase or decrease of the issued capital, merger, liquidation, strike-off, etc.

- **strike-off** – represents the removal of a company from the trade registry, due to dissolution and liquidation, being also the very moment the company loses its quality of legal person. Data also include the companies under the provisions of Law No. 314/2001.

• **Operations** represent all the records in the trade registry including incorporations, other statutory documents and strike-off of companies by foreign direct investment, irrespective of the object of activity and the company's type.

• **Terms used in tables and charts**

➤ **Number of companies:** depending on the specific table represents either the number of companies incorporated in the reference period, or the number of companies registering an increase of the issued capital, or the number of companies being struck-off from the trade registry.

➤ **Amount of the subscribed capital:**

- **total, in ROL:** the amount of the subscribed capital resulted from adding the amount subscribed in the local currency/ROL and the amount subscribed in foreign convertible currency being expressed in ROL, according to the exchange rate communicated by the National Bank of Romania at the date the deed was issued.

- **total, in equivalent of currency:**

USD : the amount of the resulted from adding and expressing in USD the convertible currency and the local currency (ROL), according to the exchange rate communicated by the National Bank of Romania at the date the deed was issued.

Euro : the balance account registered in the end of each month, calculated in equivalent of USD and expressed in Euro according to the exchange rate EUR/USD communicated by National Bank of Romania in the last working day of the due month.

➤ **Regional development:**

<i>North-East:</i>	Suceava, Botoşani, Neamţ, Iaşi, Bacău, Vaslui.
<i>South-East:</i>	Vrancea, Galaţi, Buzău, Brăila, Tulcea, Constanţa.
<i>South-Muntenia:</i>	Argeş, Dâmboviţa, Prahova, Teleorman, Giurgiu, Călăraşi, Ialomiţa.
<i>South-West Oltenia:</i>	Gorj, Vâlcea, Dolj, Mehedinţi, Olt.
<i>West:</i>	Arad, Caraş-Severin, Hunedoara, Timiş.
<i>North-West:</i>	Bihor, Bistriţa, Cluj, Satu Mare, Sălaj, Maramureş.
<i>Center:</i>	Alba, Braşov, Covasna, Harghita, Mureş, Sibiu.
<i>Bucharest-Ilfov:</i>	Bucureşti, Ilfov.

Source:

The integrated IT system of the trade registry is designed by The National Trade Registry Office according to the provisions of the related legislation in force. The source of information is the computerised system of the trade registers handled by the Trade Register Offices attached to the law courts.

Table no. 1

**Number of companies by foreign direct investment
and the amount of the subscribed capital,
balance account at 31 October 2003**

Balance account by end of period	Number of companies		Amount of subscribed capital					
			Total in ROL		Total in currency		Total in currency	
	No.	%	million ROL	%	thousand USD	%	thousand EURO	%
0	1	2	3	4				
31 October 2003, out of which:	96125	106,1	167712944,4	126,6	10092513,0	110,8	8417667,6	110,8
at 31 December 2002	90597	100,0	132512245,0	100,0	9105693,7	100,0	7594610,3	100,0

Note: column No. 1 shows the number of companies incorporated in the due period. The data concerning the amount of the subscribed capital include the records on the issued capital in companies incorporated in the related period plus the records of increase in capital and minus the subscribed capital in companies being struck-off from the trade register in the same period. The percentage inserted in column No. 1,2,3 and 4 shows the trend compared to the records of December 2002.

Diagram no. 1

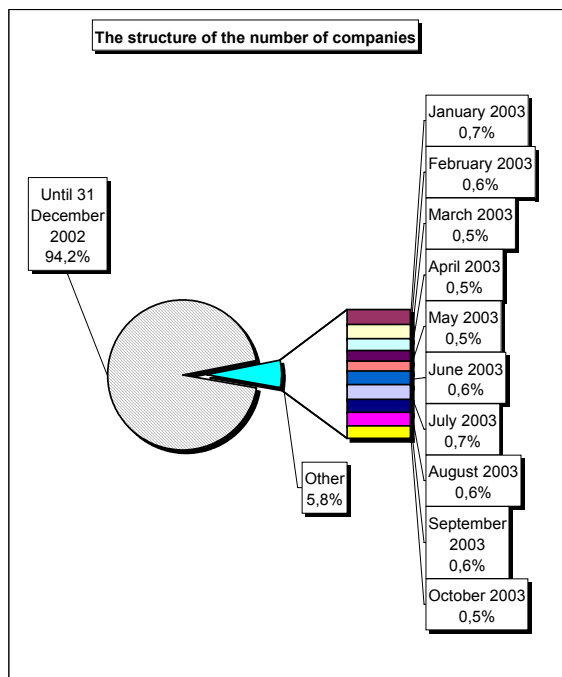


Diagram no. 2

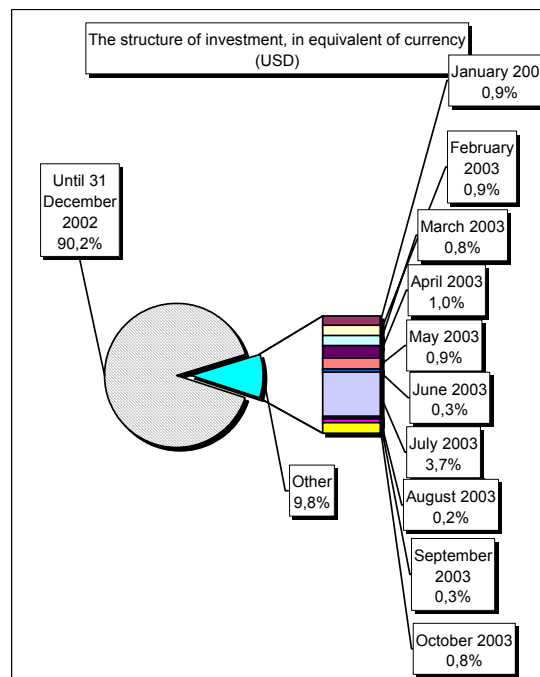


Table no. 2

**Classification* of companies by foreign direct investment
by the investors' countries of origin,
balance account at 31 October 2003**

No. crt.	Countries	Companies by foreign investment		Amount of subscribed capital					
				Total in local currency		Total in equivalent of currency		Total in equivalent of currency	
				No.	%	million ROL	%	thousand USD	%
0	1	2		3		4		5	
	Total ROMANIA	96125	100,0	167712944,4	100,0	10092513,0	100,0	8417667,6	100,0
1	NETHERLAND	1716	1,79	30686193,0	18,30	1715177,3	16,99	1430544,9	16,99
2	FRANCE	3096	3,22	20736945,6	12,36	1011454,2	10,02	843604,1	10,02
3	GERMANY	10838	11,27	14262013,0	8,50	925661,5	9,17	772048,7	9,17
4	U.S.A.	3761	3,91	6859076,2	4,09	693900,4	6,88	578748,1	6,88
5	ITALY	13847	14,41	7195968,2	4,29	610437,7	6,05	509136,0	6,05
6	AUSTRIA	2741	2,85	13247052,9	7,90	594163,2	5,89	495562,2	5,89
7	ANTILELE OLANDEZE	8	***	17569287,9	10,48	554252,4	5,49	462274,6	5,49
8	CYPRUS	1124	1,17	7464480,4	4,45	494707,3	4,90	412611,0	4,90
9	TURKEY	8606	8,95	3963521,3	2,36	416648,0	4,13	347505,6	4,13
10	GREAT BRITAIN	1637	1,70	7124744,5	4,25	397801,2	3,94	331786,4	3,94
11	GREECE	2515	2,62	5279043,8	3,15	315814,9	3,13	263405,6	3,13
12	SWITZERLAND	1241	1,29	5598951,4	3,34	304363,9	3,02	253854,9	3,02
13	HUNGARY	4320	4,49	4203498,7	2,51	234965,6	2,33	195973,2	2,33
14	SOUTH KOREA	82	0,09	478381,0	0,29	218265,7	2,16	182044,7	2,16
15	LUXEMBOURG	207	0,22	3001089,5	1,79	197452,3	1,96	164685,2	1,96
16	SPAIN	610	0,63	829668,3	0,49	156945,6	1,56	130900,6	1,56
17	I.VIRGINE BRIT.	187	0,19	3198452,8	1,91	122384,0	1,21	102074,4	1,21
18	SWEDEN	777	0,81	2439327,0	1,45	108537,9	1,08	90526,1	1,08
19	CHINA	8197	8,53	2235914,3	1,33	99877,0	0,99	83302,5	0,99
20	WITH OUT CITIZENSHIP	21	0,02	7635,2	***	75691,2	0,75	63130,3	0,75
21	BELGIUM	1152	1,20	899140,0	0,54	63750,5	0,63	53171,2	0,63
22	PORTUGAL	90	0,09	1808174,1	1,08	62945,5	0,62	52499,8	0,62
23	A.R. OF SYRIA	5246	5,46	522469,1	0,31	62738,8	0,62	52327,4	0,62
24	CANADA	876	0,91	508244,2	0,30	62362,0	0,62	52013,1	0,62
25	LIECHTENSTEIN	149	0,16	687783,4	0,41	59333,9	0,59	49487,5	0,59
26	IRAQ	5774	6,01	540971,4	0,32	51909,1	0,51	43294,8	0,51
27	JAPAN	131	0,14	1186426,1	0,71	50764,3	0,50	42340,0	0,50
28	LEBANON	3280	3,41	503750,1	0,30	45547,8	0,45	37989,2	0,45
29	ISRAEL	2529	2,63	186893,1	0,11	26958,2	0,27	22484,5	0,27
30	GIBRALTAR	25	0,03	435583,6	0,26	24682,2	0,24	20586,2	0,24
31	IRELAND	192	0,20	232182,6	0,14	24048,9	0,24	20058,0	0,24
32	FORMER YUGOSLAVIE	727	0,76	89794,1	0,05	22696,3	0,22	18929,9	0,22
33	IRAN	2581	2,69	168423,9	0,10	20242,7	0,20	16883,4	0,20
34	MARSHALL ISLANDS	7	***	575839,7	0,34	18599,4	0,18	15512,9	0,18
35	PANAMA	113	0,12	126059,5	0,08	17784,5	0,18	14833,2	0,18
36	DENMARK	246	0,26	416360,4	0,25	17638,8	0,17	14711,7	0,17
37	MONACO	24	0,02	302095,8	0,18	15371,8	0,15	12820,9	0,15
38	JORDAN	3050	3,17	120695,0	0,07	15066,2	0,15	12566,0	0,15
39	ICELAND	11	0,01	119897,3	0,07	15016,4	0,15	12524,4	0,15
40	MOLDAVIA	1559	1,62	119490,2	0,07	13391,9	0,13	11169,5	0,13
41	EGYPT	1273	1,32	88036,0	0,05	10324,0	0,10	8610,7	0,10
42	BULGARIA	504	0,52	80844,0	0,05	10258,4	0,10	8556,1	0,10
43	AUSTRALIA	395	0,41	47760,6	0,03	10052,2	0,10	8384,1	0,10
44	CZECH REPUBLIC	202	0,21	68241,5	0,04	9738,7	0,10	8122,5	0,10
45	CAMEROON	11	0,01	31887,4	0,02	9045,3	0,09	7544,2	0,09
46	INS. VIRGINE AMR.	33	0,03	89609,8	0,05	7991,4	0,08	6665,2	0,08
47	POLAND	218	0,23	97142,9	0,06	7519,6	0,07	6271,7	0,07
48	CAYMAN ISLANDS	8	***	52713,5	0,03	6461,1	0,06	5388,9	0,06

Diagram no. 3

The structure upon sector of activity* of companies by foreign direct investment, incorporated between 1991 and October 2003

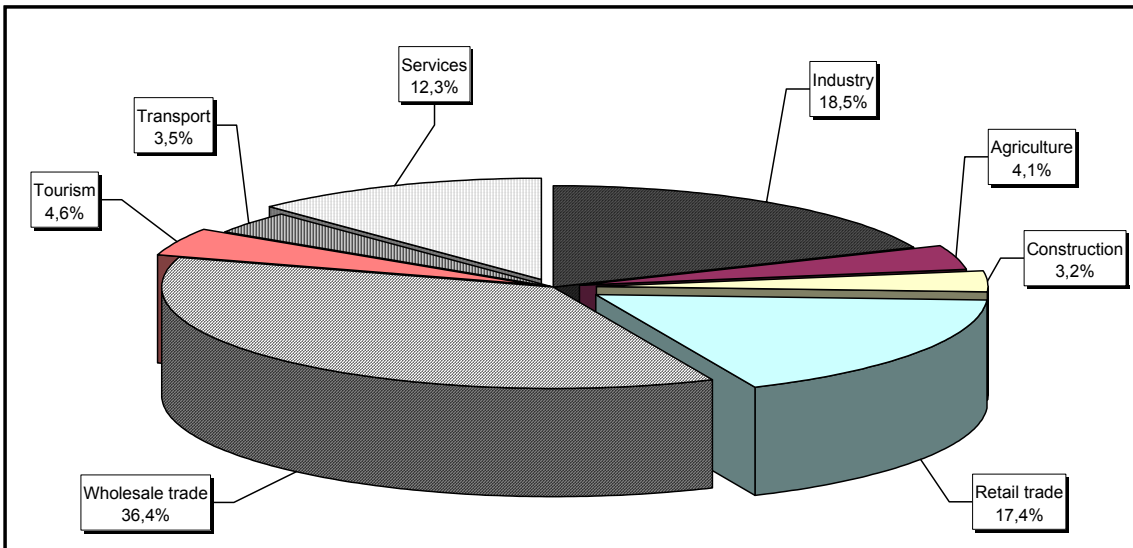
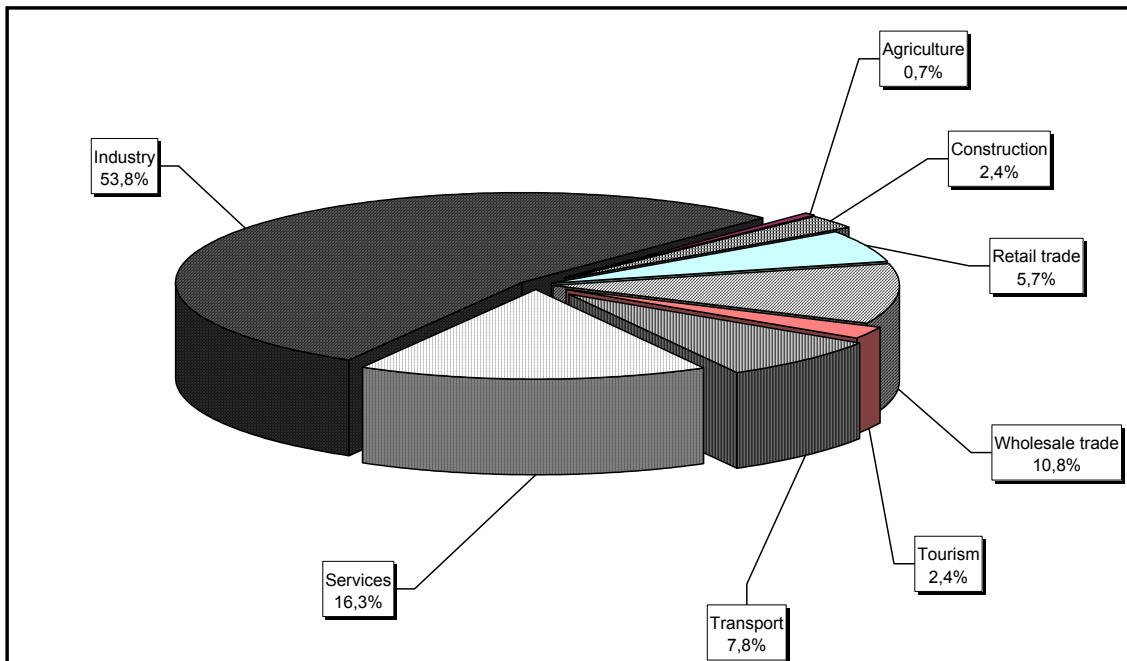


Diagram no. 4

The structure upon sector of activity in the amount of subscribed capital** in companies by foreign direct investment, during 1991 - October 2003



*) Calculated upon the main sector of activity declared

**) Calculated upon the total amount of the subscribed capital, in equivalent of currency (USD)

Table no. 3

**The number of companies by foreign direct investment
and the amount of the subscribed capital,
balance account in the end of each month of 2003**

Balance account in the end of period	Number of companies		Amount of subscribed capital					
			Total in local currency		Total in equivalent of currency		Total in equivalent of currency	
	No.	%	million ROL	%	thousand USD	%	thousand EURO	%
0	1	2	3	4				
DECEMBER 2002	90597	100,0	132512245,0	100,0	9105693,7	100,0	7594610,3	100,0
JANUARY 2003	91296	100,8	136238355,7	102,8	9197860,7	101,0	7673565,3	101,0
FEBRUARY 2003	91920	101,5	140435602,9	106,0	9284681,8	102,0	7747940,9	102,0
MARCH 2003	92420	102,0	143534555,7	108,3	9368911,3	102,9	7820096,3	103,0
APRIL 2003	92862	102,5	145907935,0	110,1	9473511,8	104,0	7909702,6	104,1
MAY 2003	93300	103,0	148722692,0	112,2	9562132,1	105,0	7985619,4	105,1
JUNE 2002	93877	103,6	150344726,9	113,5	9591671,3	105,3	8010924,3	105,5
JULY 2002	94515	104,3	162658460,7	122,7	9962061,6	109,4	8328220,0	109,7
AUGUST 2002	95065	104,9	163932033,3	123,7	9986713	109,7	8349338	109,9
SEPTEMBER 2002	95647	105,6	165212730,1	124,7	10016376	110,0	8374749	110,3
OCTOBER 2002	96125	106,1	167712944,4	126,6	10092513	110,8	8439972	111,1

Note: column no. 1 shows the number of companies incorporated in the due period. The data concerning the amount of the subscribed capital include the records on the issued capital in companies incorporated in the related period plus the records of increase in capital and minus the subscribed capital in companies being struck-off from the trade register in the same period. The percentage inserted in column No. 1,2,3 and 4 shows the trend compared to the records of December 2002.

Diagram no. 5

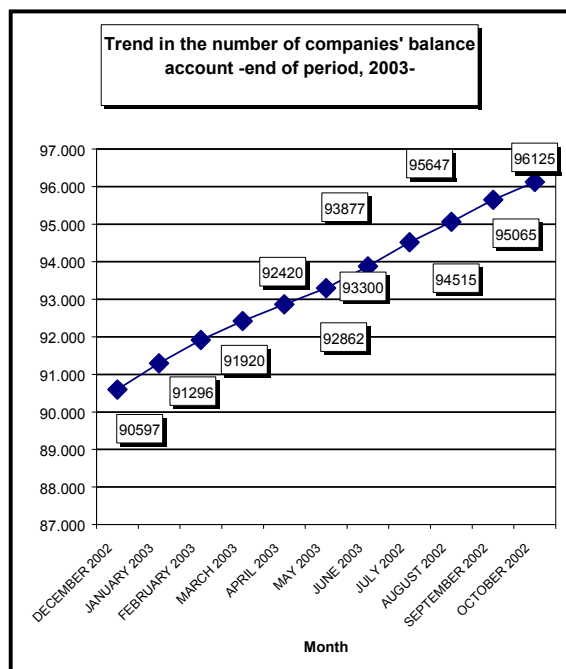


Diagram no. 6

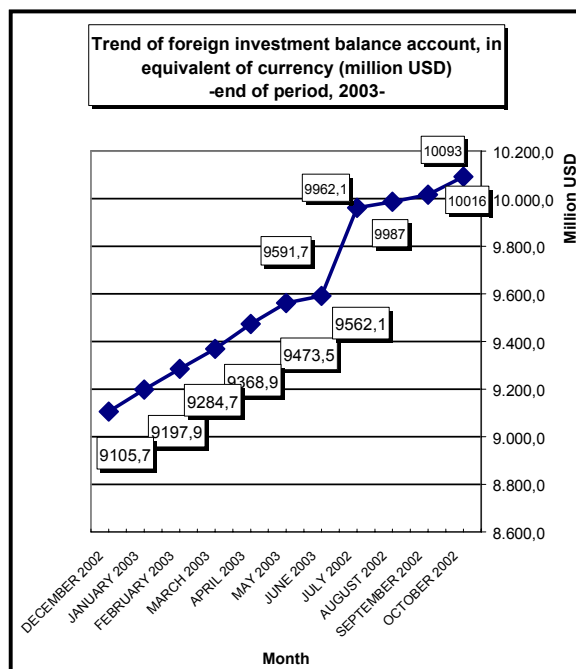


Table no. 4

Comparative data on new companies by foreign direct investment and the subscribed capital, between January - October 2002 and 2003

Month	2002				2003					
	New companies		Subscribed capital, in equivalent of currency		New companies		Trend related to 2002 (5/1)	Subscribed capital, in equivalent of currency		Trend related to 2002 (8/3)
	No.	%	thousand USD	%	No.	%	%	thousand USD	%	%
0	1	2	3	4	5	6	7	8	9	10
Jan-Sept, out of which:	6211	100,0	71349,0	100,0	5528	100,0	89,0	59740,2	100,0	83,7
JANUARY	446	7,2	6077,4	8,5	699	12,6	156,7	8983,6	15,0	147,8
FEBRUARY	512	8,2	6064,6	8,5	624	11,3	121,9	5829,1	9,8	96,1
MARCH	555	8,9	5094,3	7,1	500	9,0	90,1	4924,3	8,2	96,7
APRIL	661	10,6	6893,2	9,7	442	8,0	66,9	3234,5	5,4	46,9
MAY	579	9,3	18956,9	26,6	438	7,9	75,6	9208,1	15,4	48,6
JUNE	545	8,8	4506,7	6,3	577	10,4	105,9	3795,4	6,4	84,2
JULY	742	11,9	9438,0	13,2	638	11,5	86,0	2117,1	3,5	22,4
AUGUST	735	11,8	3545,0	5,0	550	9,9	74,8	4179,5	7,0	117,9
SEPTEMBER	720	11,6	7156,3	10,0	582	10,5	80,8	2217,5	3,7	31,0
OCTOBER	716	11,5	3616,5	5,1	478	8,6	66,8	15251,2	25,5	421,7

Note: columns No. 1 and No. 5 show the number of new companies incorporated in the due period. The data on the subscribed capital include the initial capital subscribed in the related period. Columns No. 2, 4, 6 and 9 show the weight of each month in total period referred to.

Diagram no. 7

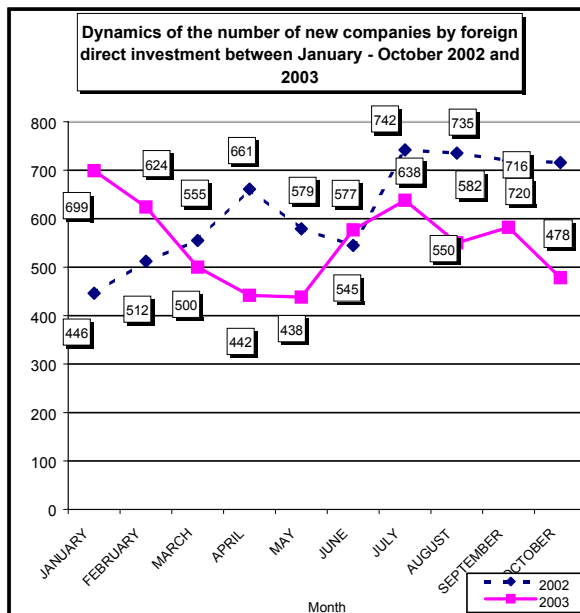


Diagram no. 8

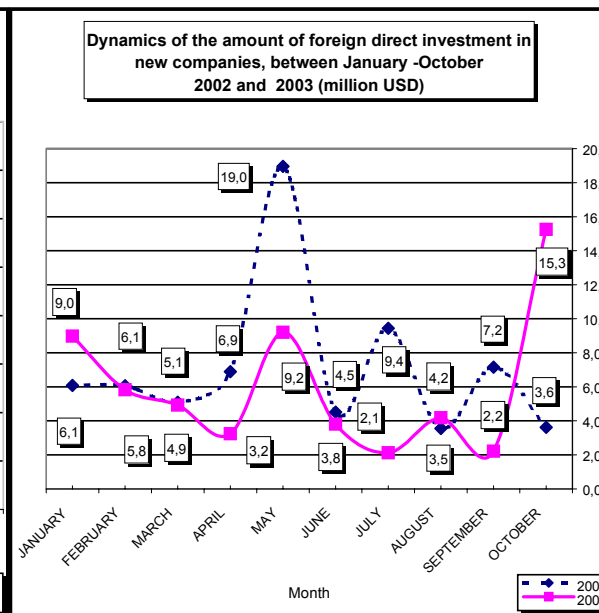


Table no. 5

**Incorporation of companies by foreign direct investment,
during October 2003**

Counties	Number of companies		Amount of subscribed capital						Ranking by:	
			Total in local currency		Total in equivalent of currency		Total in equivalent of currency			
	No.	%	million ROL	%	USD	%	EURO	%	*	**
0	1	2	3	4	5					
Total ROMANIA	478	100,0	517324,8	100,0	15251161	100,0	12720242	100,0	*	**
ALBA	8	1,67	3404,7	0,66	99747	0,65	83194	0,65	12	7
ARAD	10	2,09	112984,4	21,84	3301122	21,65	2753303	21,65	10	2
ARGES	6	1,26	7591,1	1,47	220630	1,45	184017	1,45	14	4
BACAU	8	1,67	54,4	0,01	1481	***	1235	***	12	25
BIHOR	17	3,56	937,5	0,18	28635	0,19	23883	0,19	7	11
BISTRITA-NASAUD	4	0,84	339,8	0,07	10017	0,07	8355	0,07	16	17
BOTOSANI	3	0,63	15,6	***	468	***	390	***	17	31
BRASOV	24	5,02	1969,2	0,38	59102	0,39	49294	0,39	3	9
BRAILA	4	0,84	23,9	***	729	***	608	***	16	30
BUZAU	8	1,67	813,4	0,16	24240	0,16	20217	0,16	12	13
CARAS-SEVERIN	6	1,26	34,7	***	1050	***	876	***	14	28
CALARASI	1	0,21	1,5	***	45	***	38	***	19	39
CLUJ	23	4,81	109,2	0,02	3252	0,02	2712	0,02	4	22
CONSTANTA	14	2,93	37,0	***	1103	***	920	***	8	27
COVASNA	8	1,67	681,3	0,13	20773	0,14	17326	0,14	12	14
DAMBOVITA	3	0,63	13,0	***	392	***	327	***	17	33
DOLJ	12	2,51	46769,8	9,04	1410044	9,25	1176048	9,25	9	3
GALATI	6	1,26	1725,1	0,33	51623	0,34	43056	0,34	14	10
GIURGIU	2	0,42	6,3	***	180	***	150	***	18	36
GORJ	1	0,21	3,8	***	100	***	83	***	19	38
HARGHITA	21	4,39	3983,2	0,77	118888	0,78	99159	0,78	5	6
HUNEDOARA	9	1,88	56,5	0,01	1685	0,01	1405	0,01	11	24
IALOMITA	1	0,21	3,9	***	117	***	98	***	19	37
IASI	10	2,09	344,3	0,07	10404	0,07	8677	0,07	10	16
MARAMURES	7	1,46	29,0	***	873	***	728	***	13	29
MEHEDINTI	5	1,05	10,0	***	320	***	267	***	15	35
MURES	12	2,51	118,9	0,02	3651	0,02	3045	0,02	9	21
NEAMT	5	1,05	11,9	***	356	***	297	***	15	34
OLT	2	0,42	13,6	***	408	***	340	***	18	32
PRAHOVA	14	2,93	95,5	0,02	2915	0,02	2431	0,02	8	23
SALAJ	3	0,63	45,9	***	1377	***	1148	***	17	26
SATU MARE	14	2,93	231,9	0,04	6990	0,05	5830	0,05	8	18
SIBIU	18	3,77	452,4	0,09	13693	0,09	11421	0,09	6	15
SUCEAVA	5	1,05	2656,0	0,51	80691	0,53	67300	0,53	15	8
TELEORMAN	2	0,42	213,7	0,04	6268	0,04	5228	0,04	18	19
TIMIS	50	10,46	877,1	0,17	26421	0,17	22036	0,17	2	12
TULCEA										
VASLUI										
VALCEA	1	0,21	1,0	***	30	***	25	***	19	40
VRANCEA	2	0,42	165,0	0,03	5060	0,03	4220	0,03	18	20
MUN. BUCURESTI	111	23,22	324539,9	62,73	9555737	62,66	7969969	62,66	1	1
ILFOV	18	3,77	5959,5	1,15	180544	1,18	150583	1,18	6	5

*) number of companies (column 1)

**) capital in equivalent currency (column3)

*** Less than 0.01%

Note: Empty rows reveal that there are no operation in the current month

Table no. 6

**Statutory increase of the issued capital,
in companies by foreign direct investment
during October 2003**

Counties	Number of companies		Amount of subscribed capital						Ranking by:	
			Total in local currency		Total in equivalent of currency		Total in equivalent of currency			
	No.	%	million ROL	%	USD	%	EURO	%		
0	1	2	3	4	5					
Total ROMANIA	402	100,00	4074995,3	100,00	127838042	100,00	106623409	100,00	*	**
ALBA	1	0,25	93750,0	2,30	2866644	2,24	2390926	2,24	14	9
ARAD	2	0,50	1,1	***	33	***	28	***	13	34
ARGES	6	1,49	63913,0	1,57	1885543	1,47	1572638	1,47	9	10
BACAU	1	0,25	1863669,6	45,73	56053586	43,85	46751533	43,85	14	1
BIHOR	4	1,00	5,5	***	167	***	139	***	11	33
BISTRITA-NASAUD	1	0,25	138,5	***	4153	***	3464	***	14	25
BOTOSANI	1	0,25	73,3	***	2632	***	2195	***	14	28
BRASOV	11	2,74	5310,5	0,13	150527	0,12	125547	0,12	5	16
BRAILA	3	0,75	56,1	***	5605	***	4675	***	12	23
BUZAU	2	0,50	208,3	***	6094	***	5083	***	13	22
CARAS-SEVERIN										
CALARASI	1	0,25	242060,0	5,94	7128007	5,58	5945119	5,58	14	3
CLUJ	17	4,23	139558,4	3,42	4232863	3,31	3530422	3,31	4	7
CONSTANTA	4	1,00	104,4	***	3147	***	2625	***	11	26
COVASNA										
DAMBOVITA	3	0,75	195487,3	4,80	5974367	4,67	4982925	4,67	12	4
DOLJ	4	1,00	7535,0	0,18	272953	0,21	227657	0,21	11	15
GALATI	2	0,50	4949,0	0,12	148953	0,12	124234	0,12	13	17
GIURGIU	3	0,75	100165,4	2,46	3009394	2,35	2509987	2,35	12	8
GORJ	1	0,25	36,8	***	-11168	-0,01	-9315	-0,01	14	37
HARGHITA	7	1,74	4902,1	0,12	147171	0,12	122748	0,12	8	18
HUNEDOARA	9	2,24	381,5	***	11418	***	9523	***	6	21
IALOMITA	2	0,50	169,8	***	5144	***	4290	***	13	24
IASI	8	1,99	4136,9	0,10	123427	0,10	102944	0,10	7	19
MARAMURES	5	1,24	11658,2	0,29	335720	0,26	280008	0,26	10	14
MEHEDINTI										
MURES	2	0,50	37,5	***	1126	***	939	***	13	31
NEAMT	4	1,00	19,8	***	744	***	621	***	11	32
OLT	2	0,50	101,0	***	3013	***	2513	***	13	27
PRAHOVA	3	0,75	63,1	***	1913	***	1596	***	12	29
SALAJ	1	0,25	23,7	***	1314	***	1096	***	14	30
SATU MARE	4	1,00	3108,3	0,08	94505	0,07	78822	0,07	11	20
SIBIU	2	0,50	17438,1	0,43	529939	0,41	441996	0,41	13	13
SUCEAVA										
TELEORMAN										
TIMIS	21	5,22	47078,4	1,16	1427852	1,12	1190901	1,12	2	11
TULCEA										
VASLUI	3	0,75	168117,8	4,13	5044189	3,95	4207109	3,95	12	6
VALCEA	6	1,49	18389,4	0,45	552970	0,43	461205	0,43	9	12
VRANCEA	1	0,25	0,6	***	28	***	23	***	14	35
MUN. BUCURESTI	236	58,71	924090,3	22,68	31964116	25,00	26659693	25,00	1	2
ILFOV	19	4,73	158256,7	3,88	5859953	4,58	4887498	4,58	3	5

*) number of companies (column 1)

**) capital in equivalent currency (column3)

*** Less than 0.01%

Note: Empty rows reveal that there are no operation in the current month

Table no. 7

**Strike-off of companies by foreign direct investment,
from the trade register, during October 2003**

Counties	Number of companies		Amount of subscribed capital						Ranking by:	
			Total in local currency		Total in equivalent of currency		Total in equivalent of currency			
	No.	%	million RON	%	USD	%	EURO	%	*	**
0	1		2		3		4		5	
Total ROMANIA	492	100,0	30661,2	100,0	2162582	100,0	1803703	100,0	*	**
ALBA	1	0,20	2,0	***	61	***	51	***	7	19
ARAD	2	0,41	2,6	***	1560	0,07	1301	0,07	6	11
ARGES										
BACAU	63	12,80	56,8	0,19	75218	3,48	62736	3,48	2	5
BIHOR	355	72,15	162,2	0,53	460560	21,30	384130	21,30	1	2
BISTRITA-NASAUD	1	0,20	579,1	1,89	96268	4,45	80292	4,45	7	3
BOTOSANI										
BRASOV										
BRAILA										
BUZAU	2	0,41	680,4	2,22	85050	3,93	70936	3,93	6	4
CARAS-SEVERIN										
CALARASI										
CLUJ	2	0,41	21,3	0,07	648	0,03	540	0,03	6	15
CONSTANTA										
COVASNA	2	0,41	8,8	0,03	4394	0,20	3665	0,20	6	9
DAMBOVITA										
DOLJ	3	0,61	5,0	0,02	176	***	147	***	5	17
GALATI										
GIURGIU										
GORJ										
HARGHITA	1	0,20	1,7	***	1000	0,05	834	0,05	7	13
HUNEDOARA	2	0,41	3,9	0,01	121	***	101	***	6	18
IALOMITA	1	0,20	2,2	***	250	0,01	209	0,01	7	16
IASI	1	0,20	17,8	0,06	1000	0,05	834	0,05	7	13
MARAMURES										
MEHEDINTI										
MURES	1	0,20	1,0	***	56	***	47	***	7	20
NEAMT	3	0,61	26,1	0,09	11812	0,55	9852	0,55	5	7
OLT	4	0,81	24,0	0,08	1300	0,06	1084	0,06	4	12
PRAHOVA	3	0,61	10,1	0,03	880	0,04	734	0,04	5	14
SALAJ										
SATU MARE	1	0,20	1,0	***	31	***	26	***	7	21
SIBIU	3	0,61	162,0	0,53	19430	0,90	16206	0,90	5	6
SUCEAVA										
TELEORMAN										
TIMIS	3	0,61	60,0	0,20	2417	0,11	2016	0,11	5	10
TULCEA										
VASLUI										
VALCEA										
VRANCEA										
MUN. BUCURESTI	35	7,11	28754,4	93,78	1395784	64,54	1164155	64,54	3	1
ILFOV	3	0,61	78,8	0,26	4566	0,21	3808	0,21	5	8

*) number of companies (column 1)

**) capital in equivalent currency (column3)

*** Less than 0.01%

Note: Empty rows reveal that there are no operation in the current month

Table no. 8

**Changes by cession in the issued capital
of the companies by foreign direct investment,
during October 2003**

Counties	Number of companies		Amount of subscribed capital						Ranking by:	
			Total in local currency		Total in equivalent of currency		Total in equivalent of currency			
	No.	%	million ROL	%	USD	%	EURO	%	*	**
0	1		2		3		4		5	
Total ROMANIA	238	100,0	2061444,7	100,0	64789905	100,0	54038066	100,0	*	**
ALBA										
ARAD	4	1,7	1997,5	0,10	71279	0,11	59450	0,11	8	10
ARGES	3	1,3	31088,4	1,51	1072746,0	1,66	894724,6	1,66	9	4
BACAU	1	0,4	1863669,6	90,41	55816875	86,15	46554104	86,15	11	1
BIHOR	5	2,1	692,2	0,03	29133	0,04	24298	0,04	7	12
BISTRITA-NASAUD										
BOTOSANI										
BRASOV	9	3,8	76619,5	3,72	2311238	3,57	1927690	3,57	5	3
BRAILA	1	0,4	35,5 ***		5000 ***		4170 ***		11	21
BUZAU	1	0,4	1,8 ***		54 ***		45 ***		11	27
CARAS-SEVERIN	1	0,4	10,8 ***		334 ***		279 ***		11	25
CALARASI	1	0,4	10,0	0,00	1184	0,00	988	0,00	11	32
CLUJ	13	5,5	316,7	0,02	15162	0,02	12646	0,02	3	14
CONSTANTA	4	1,7	1098,8	0,05	55053	0,08	45917	0,08	8	11
COVASNA										
DAMBOVITA	1	0,4	33,0 ***		994 ***		829 ***		11	24
DOLJ	2	0,8	6604,9	0,32	284952	0,44	237664	0,44	10	5
GALATI	1	0,4	301,0	0,01	9167	0,01	7646	0,01	11	16
GIURGIU	3	1,3	3252,6	0,16	89277	0,14	74462	0,14	9	33
GORJ										
HARGHITA	1	0,4	1,8 ***		54 ***		45 ***		11	27
HUNEDOARA	7	2,9	482,9	0,02	15068	0,02	12567	0,02	6	15
IALOMITA	3	1,3	171,2 ***		5415 ***		4516 ***		9	20
IASI	3	1,3	118,5 ***		6883	0,01	5741	0,01	9	17
MARAMURES	2	0,8	276,5	0,01	19530	0,03	16289	0,03	10	13
MEHEDINTI										
MURES	1	0,4	35,5 ***		1064 ***		887 ***		11	23
NEAMT	2	0,8	16,4 ***		5563 ***		4640 ***		10	19
OLT	1	0,4	268,3	0,01	147074	0,23	122667	0,23	11	7
PRAHOVA	2	0,8	0,3	0,00	9	0,00	8	0,00	10	31
SALAJ	1	0,4	23,7 ***		1314 ***		1096 ***		11	22
SATU MARE	3	1,3	4105,7	0,20	124549	0,19	103880	0,19	9	8
SIBIU	2	0,8	1,3 ***		60 ***		50 ***		10	26
SUCEAVA										
TELEORMAN										
TIMIS	12	5,0	32,0 ***		5997 ***		5002 ***		4	18
TULCEA										
VASLUI	1	0,4	1,0 ***		30 ***		25 ***		11	28
VALCEA	2	0,8	2778,5	0,13	94390	0,15	78726	0,15	10	9
VRANCEA	1	0,4	0,6 ***		28 ***		23 ***		11	29
MUN. BUCURESTI	130	54,6	66852,1	3,24	4532808	7,00	3780592	7,00	1	2
ILFOV	14	5,9	7072,0	0,34	248561	0,38	207312	0,38	2	6

*) number of companies (column 1)

**) capital in equivalent currency (column 3)

*** Less than 0,01%

Note: Empty rows reveal that there are no operation in the current month

Table no. 8

**Changes by cession in the issued capital
of the companies by foreign direct investment,
during October 2003**

Counties	Number of companies		Amount of subscribed capital						Ranking by:	
			Total in local currency		Total in equivalent of currency		Total in equivalent of currency			
	No.	%	million ROL	%	USD	%	EURO	%		
0	1	2	3	4	5					
Total ROMANIA	238	100,0	2061444,7	100,0	64789905	100,0	54038066	100,0	*	**
ALBA										
ARAD	4	1,7	1997,5	0,10	71279	0,11	59450	0,11	8	10
ARGES	3	1,3	31088,4	1,51	1072746,0	1,66	894724,6	1,66	9	4
BACAU	1	0,4	1863669,6	90,41	55816875	86,15	46554104	86,15	11	1
BIHOR	5	2,1	692,2	0,03	29133	0,04	24298	0,04	7	12
BISTRITA-NASAUD										
BOTOSANI										
BRASOV	9	3,8	76619,5	3,72	2311238	3,57	1927690	3,57	5	3
BRAILA	1	0,4	35,5 ***		5000 ***		4170 ***		11	21
BUZAU	1	0,4	1,8 ***		54 ***		45 ***		11	27
CARAS-SEVERIN	1	0,4	10,8 ***		334 ***		279 ***		11	25
CALARASI	1	0,4	10,0	0,00	1184	0,00	988	0,00	11	32
CLUJ	13	5,5	316,7	0,02	15162	0,02	12646	0,02	3	14
CONSTANTA	4	1,7	1098,8	0,05	55053	0,08	45917	0,08	8	11
COVASNA										
DAMBOVITA	1	0,4	33,0 ***		994 ***		829 ***		11	24
DOLJ	2	0,8	6604,9	0,32	284952	0,44	237664	0,44	10	5
GALATI	1	0,4	301,0	0,01	9167	0,01	7646	0,01	11	16
GIURGIU	3	1,3	3252,6	0,16	89277	0,14	74462	0,14	9	33
GORJ										
HARGHITA	1	0,4	1,8 ***		54 ***		45 ***		11	27
HUNEDOARA	7	2,9	482,9	0,02	15068	0,02	12567	0,02	6	15
IALOMITA	3	1,3	171,2 ***		5415 ***		4516 ***		9	20
IASI	3	1,3	118,5 ***		6883	0,01	5741	0,01	9	17
MARAMURES	2	0,8	276,5	0,01	19530	0,03	16289	0,03	10	13
MEHEDINTI										
MURES	1	0,4	35,5 ***		1064 ***		887 ***		11	23
NEAMT	2	0,8	16,4 ***		5563 ***		4640 ***		10	19
OLT	1	0,4	268,3	0,01	147074	0,23	122667	0,23	11	7
PRAHOVA	2	0,8	0,3	0,00	9	0,00	8	0,00	10	31
SALAJ	1	0,4	23,7 ***		1314 ***		1096 ***		11	22
SATU MARE	3	1,3	4105,7	0,20	124549	0,19	103880	0,19	9	8
SIBIU	2	0,8	1,3 ***		60 ***		50 ***		10	26
SUCEAVA										
TELEORMAN										
TIMIS	12	5,0	32,0 ***		5997 ***		5002 ***		4	18
TULCEA										
VASLUI	1	0,4	1,0 ***		30 ***		25 ***		11	28
VALCEA	2	0,8	2778,5	0,13	94390	0,15	78726	0,15	10	9
VRANCEA	1	0,4	0,6 ***		28 ***		23 ***		11	29
MUN. BUCURESTI	130	54,6	66852,1	3,24	4532808	7,00	3780592	7,00	1	2
ILFOV	14	5,9	7072,0	0,34	248561	0,38	207312	0,38	2	6

*) number of companies (column 1)

**) capital in equivalent currency (column 3)

*** Less than 0,01%

Note: Empty rows reveal that there are no operation in the current month

Table no. 9

**Incorporation of companies by foreign direct investment,
according to the development regions,
during October2003**

Development regions	Number of companies		Amount of subscribed capital						Ranking by:	
			Total in local currency		Total in equivalent of currency		Total in equivalent of currency			
	No.	%	million ROL	%	USD	%	EURO	%		
0	1		2		3		4		5	
Total ROMANIA	478	100,0	517324,8	100,0	15251161	100,0	12720242	100,0	*	**
NORTH-EAST	31	6,5	3082,2	0,6	93400	0,6	77900	0,6	6	6
SOUTH-EAST	34	7,1	2764,4	0,5	82755	0,5	69022	0,5	5	7
SOUTH-MUNTENIA	29	6,1	7925,0	1,5	230547	1,5	192288	1,5	7	5
SOUTH-WEST OLTENIA	21	4,4	46798,2	9,0	1410902	9,3	1176764	9,3	8	3
WEST	75	15,7	113952,7	22,0	3330278	21,8	2777621	21,8	3	2
NORTH-WEST	68	14,2	1693,3	0,3	51144	0,3	42657	0,3	4	8
CENTER	91	19,0	10609,7	2,1	315854	2,1	263438	2,1	2	4
BUCHAREST-ILFOV	129	27,0	330499,4	63,9	9736281	63,8	8120552	63,8	1	1

Table no. 10

**Statutory increase in the issued capital of companies by
foreign direct investment, according to the development regions,
during October 2003**

Development regions	Number of companies		Amount of subscribed capital						Ranking by:	
			Total in local currency		Total in equivalent of currency		Total in equivalent of currency			
	No.	%	million ROL	%	USD	%	EURO	%		
0	1		2		3		4		5	
Total ROMANIA	402	100,0	4074995,3	100,0	127838042	100,0	106623409	100,0	*	**
NORTH-EAST	17	4,2	2036017,4	50,0	61224578	47,9	51064402	47,9	5	1
SOUTH-EAST	12	3,0	5318,4	0,1	163827	0,1	136640	0,1	7	8
SOUTH-MUNTENIA	18	4,5	601858,6	14,8	18004368	14,1	15016556	14,1	4	3
SOUTH-WEST OLTENIA	13	3,2	26062,2	0,6	817768	0,6	682060	0,6	6	7
WEST	32	8,0	47461,0	1,2	1439303	1,1	1200452	1,1	2	6
NORTH-WEST	32	8,0	154492,5	3,8	4668722	3,7	3893951	3,7	2	4
CENTER	23	5,7	121438,1	3,0	3695407	2,9	3082157	2,9	3	5
BUCHAREST-ILFOV	255	63,4	1082347,0	26,6	37824069	29,6	31547191	29,6	1	2

Table no. 11

**Strike-off of companies by foreign direct investment and the amount
of their issued capital, according to the development regions,
during October 2003**

Development regions	Number of companies		Amount of subscribed capital						Ranking by:	
			Total in local currency		Total in equivalent of currency		Total in equivalent of currency			
	No.	%	million ROL	%	USD	%	EURO	%		
0	1		2		3		4		5	
Total ROMANIA	492	100,0	30661,2	100,0	100,0	100,0	1803703	100,0	*	**
NORTH-EAST	67	13,6	100,7	0,3	88030	4,1	73421	4,1	2	3
SOUTH-EAST	2	0,4	680,4	2,2	85050	3,9	70936	3,9	7	4
SOUTH-MUNTENIA	4	0,8	12,3	0,0	1130	0,1	942	0,1	6	8
SOUTH-WEST OLTENIA	7	1,4	29,0	0,1	1476	0,1	1231	0,1	5	7
WEST	7	1,4	66,5	0,2	4098	0,2	3418	0,2	5	6
NORTH-WEST	359	73,0	763,6	2,5	557507	25,8	464989	25,8	1	2
CENTER	8	1,6	175,5	0,6	24941	1,2	20802	1,2	4	5
BUCHAREST-ILFOV	38	7,7	28833,2	94,0	1400350	64,8	1167963	64,8	3	1

*) number of companies (column 1)

**) total issued capital, in equivalent of currency (column3)

*** Less than 0.01%

Note: Empty rows reveal that there are no operation in the current month

Table no. 12

**Incorporation of companies by foreign direct investment, by continents
according to the investors' country of origin,
during October 2003**

Continent	Number of companies		Amount of subscribed capital						Ranking by:	
			Total in local currency		Total in equivalent of currency		Total in equivalent of currency			
	No.	%	million ROL	%	USD	%	EURO	%		
0	1		2		3		4		5	
Total ROMANIA	478	100,0	517324,8	100,0	15251161	100,0	12720242	100,0	*	**
EUROPE	402	84,1	344236,1	66,5	10167204	66,7	8479964	66,7	1	1
AFRICA	7	1,5	1985,7	0,4	58517	0,4	48806	0,4	4	5
NORTH AMERICA	27	5,6	3063,4	0,6	92842	0,6	77435	0,6	3	4
SOUTH AMERICA	2	0,4	35011,2	6,8	1030000	6,8	859072	6,8	6	3
ASIA	49	10,3	133022,3	25,7	3902185	25,6	3254620	25,6	2	2
OCEANIA	5	1,0	6,1	***	413	***	344	***	5	6

Table no. 13

**Increase in the issued capital of companies by foreign direct investment,
by continents according to the investors' country of origin,
during October2003**

Continent	Number of companies		Amount of subscribed capital						Ranking by:	
			Total in local currency		Total in equivalent of currency		Total in equivalent of currency			
	No.	%	million ROL	%	USD	%	EURO	%		
0	1		2		3		4		5	
Total ROMANIA	402	100,0	4074995,3	100,0	127838042	100,0	106623409	100,0	*	**
EUROPE	266	66,2	3795695,8	93,1	118629974	92,8	98943413	92,8	1	1
AFRICA	7	1,7	7925,8	0,2	381249	0,3	317981	0,3	4	4
NORTH AMERICA	26	6,5	75737,3	1,9	2270182	1,8	1893447	1,8	3	3
SOUTH AMERICA	2	0,5	1,0	***	30	***	25	***	5	6
ASIA	118	29,4	195603,7	4,8	6555643	5,1	5467739	5,1	2	2
OCEANIA	2	0,5	31,8	***	964	***	804	***	5	5

Table no. 14

**Strike-off of companies by foreign direct investment and their issued capital,
by continents according to the investors' country of origin,
during October 2003**

Continent	Number of companies		Amount of subscribed capital						Ranking by:	
			Total in local currency		Total in equivalent of currency		Total in equivalent of currency			
	No.	%	million ROL	%	USD	%	EURO	%		
0	1		2		3		4		5	
Total ROMANIA	492	100,0	30661,2	100,0	2162582	100,0	1803703	100,0	*	**
EUROPE	410	83,3	25420,8	82,9		83,7	1509719	83,7	1	1
AFRICA	10	2,0	12,0	0,0	3839	0,2	3202	0,2	4	4
NORTH AMERICA	26	5,3	2573,2	8,4	94349	4,4	78692	4,4	3	3
SOUTH AMERICA	1	0,2	0,0	***	152	***	127	***	6	6

*) number of companies (column 1)

**) total issued capital, in equivalent of currency (column3)

*** Sub 0,01%

Table no. 15

**Incorporation of companies by foreign direct investment, by economical groups
of countries according to the investors' country of origin,
during October 2003**

Economical groups	Number of companies		Amount of subscribed capital						Ranking by:	
			Total in local currency		Total in equivalent of currency		Total in equivalent of currency			
	No.	%	million ROL	%	USD	%	EURO	%		
0	1		2		3		4		5	
Total ROMANIA	478		517324,8		15251161		12720242		*	**
E.U.	289	60,5	326158,1	63,0	9631711	63,2	8033335	63,2	2	2
E.A.F.T.A.	3	0,6	2043,7	0,4	61418	0,4	51226	0,4	4	4
O.E.C.D.	398	83,3	459964,8	88,9	13551925	88,9	11302993	88,9	1	1
C.E.F.T.A.	50	10,5	6541,4	1,3	196155	1,3	163603	1,3	3	3

Table no. 16

**Increase in the issued capital of companies by foreign direct investment,
by economical groups of countries according to the investors' country of origin,
during October 2003**

Economical groups	Number of companies		Amount of subscribed capital						Ranking by:	
			Total in local currency		Total in equivalent of currency		Total in equivalent of currency			
	No.	%	million ROL	%	USD	%	EURO	%		
0	1		2		3		4		5	
Total ROMANIA	402		4074995,3		127838042		106623409		*	**
E.U.	162	40,3	3285712,1	80,6	101930869	79,7	85015513	79,7	2	2
E.A.F.T.A.	11	2,7	46928,8	1,2	1399833	1,1	1167532	1,1	4	4
O.E.C.D.	261	64,9	3702123,0	90,8	115784679	90,6	96570293	90,6	1	1
C.E.F.T.A.	18	4,5	108607,6	2,7	3288828	2,6	2743049	2,6	3	3

Table no. 17

**Strike-off of companies by foreign direct investment and their issued capital,
by economical groups of countries according to the investors' country of origin,
during October 2003**

Economical groups	Number of companies		Amount of subscribed capital						Ranking by:	
			Total in local currency		Total in equivalent of currency		Total in equivalent of currency			
	No.	%	million ROL	%	USD	%	EURO	%		
0	1		2		3		4		5	
Total ROMANIA	492		30661,2				1803703		*	**
E.U.	223	45,3	23129,0	75,4	1543303	71,4	1287193	71,4	2	2
E.A.F.T.A.	4	0,8	14,2	0,0	6028	0,3	5028	0,3	4	4
O.E.C.D.	418	85,0	27353,5	89,2	1821164	84,2	1518943	84,2	1	1
C.E.F.T.A.	150	30,5	116,0	0,4	120284	5,6	100323	5,6	3	3

*) number of companies (column 1)

**) total issued capital, in equivalent of currency (column3)

*** Less than 0.01%

Table no. 18

**Classification* by countries of origin of investors
in companies by foreign direct investment,
incorporated during October 2003**

No. crt.	Countries	Number of companies		Amount of subscribed capital							
				Total in local currency				Total in equivalent of currency		Total in equivalent of currency	
		No.	%	million ROL	%	USD	%	EURO	%		
0	1	2		3		4		5			
	Total ROMANIA, out of which:	478	100,0	517324,8	100,0	15251161	100,0	12720242	100,0		
1	GREAT BRITAIN	14	2,9	264231,2	51,08	7768573	50,94	6479384	50,94		
2	JAPAN	1	0,2	112834,1	21,81	3296700	21,62	2749615	21,62		
3	NETHERLAND	14	2,9	43848,3	8,48	1321892	8,67	1102525	8,67		
4	I.VIRGINE BRIT.	2	0,4	35011,2	6,77	1030000	6,75	859072	6,75		
5	CHINA	13	2,7	14533,6	2,81	436026	2,86	363668	2,86		
6	TURKEY	27	5,6	9338,1	1,81	273283	1,79	227932	1,79		
7	ITALY	122	25,5	6112,6	1,18	182635	1,20	152327	1,20		
8	HUNGARY	40	8,4	5747,1	1,11	172669	1,13	144015	1,13		
9	LEBANON	5	1,0	4816,1	0,93	143973	0,94	120081	0,94		
10	GREECE	18	3,8	4026,6	0,78	121069	0,79	100978	0,79		
11	GERMANY	53	11,1	3159,7	0,61	93899	0,62	78317	0,62		
12	U.S.A.	19	4,0	3041,4	0,59	92182	0,60	76884	0,60		
13	SWITZERLAND	2	0,4	2042,0	0,39	61368	0,40	51184	0,40		
14	SPAIN	14	2,9	1924,5	0,37	57755	0,38	48171	0,38		
15	EGYPT	3	0,6	1906,7	0,37	56078	0,37	46772	0,37		
16	BELGIUM	11	2,3	1412,4	0,27	42065	0,28	35084	0,28		
17	FRANCE	21	4,4	1381,8	0,27	41977	0,28	35011	0,28		
18	CZECH REPUBLIC	4	0,8	763,1	0,15	22559	0,15	18815	0,15		
19	IRAN	4	0,8	345,0	0,07	10600	0,07	8841	0,07		
20	INDIA	1	0,2	332,2	0,06	10000	0,07	8341	0,07		
21	A.R. OF SYRIA	4	0,8	92,0	0,02	2806	0,02	2340	0,02		
22	CYPRUS	7	1,5	63,7	0,01	1877	0,01	1566	0,01		
23	ISRAEL	14	2,9	53,1	0,01	1591	0,01	1327	0,01		
24	MOLDAVIA	15	3,1	52,2	0,01	1575	0,01	1314	0,01		
25	AUSTRIA	17	3,6	51,4	***	1560	0,01	1301	0,01		
26	LIBYA	1	0,2	36,9	***	1190	***	993	***		
27	MOROCCO	2	0,4	40,1	***	1189	***	992	***		
28	SERBIA AND MONTENEGRO	5	1,0	27,5	***	838	***	699	***		
29	CANADA	8	1,7	22,0	***	660	***	550	***		
30	BULGARIA	4	0,8	16,0	***	477	***	398	***		
31	AUSTRALIA	5	1,0	6,1	***	413	***	344	***		
32	POLAND	1	0,2	10,2	***	300	***	250	***		
33	FORMER YUGOSLAVIE	2	0,4	6,0	***	182	***	152	***		
34	JORDAN	1	0,2	5,0	***	150	***	125	***		
35	SAUDI ARABIA	1	0,2	5,0	***	150	***	125	***		
36	SLOVAKIA	1	0,2	5,0	***	150	***	125	***		
37	CROATIA	2	0,4	4,0	***	120	***	100	***		
38	IRAQ	2	0,4	4,0	***	119	***	99	***		
39	SWEDEN	2	0,4	4,0	***	119	***	99	***		
40	PORTUGAL	1	0,2	2,1	***	63	***	53	***		
41	IRELAND	1	0,2	2,0	***	60	***	50	***		
42	NIGERIA	1	0,2	2,0	***	60	***	54	***		
43	NORWAY	1	0,2	1,7	***	50	***	45	***		
44	DENMARK	1	0,2	1,5	***	44	***	40	***		
45	THAILANDA	1	0,2	1,0	***	31	***	26	***		
46	SOUTH KOREA	1	0,2	1,0	***	30	***	25	***		
47	MACEDONIA	1	0,2	1,0	***	30	***	25	***		
48	RUSSIA	1	0,2	0,5	***	15	***	13	***		

Table no. 20

**Classification of the top 40 companies by foreign direct investment
in the total subscribed capital, in equivalent of currency,
during October 2003**

No. crt.	Companies	County	Country of origin of the majority investor	Amount of subscribed capital		
				Total in local currency	Total in equivalent of currency	Total in equivalent of currency
				million ROL	thousand USD	thousand EURO
0	1	2	3	4	5	6
1	BANCA ROMANEASCA SA	BUCURESTI	GREECE	363352.7	13653.6	11387.8
2	DAMBOVITA CENTER SRL	BUCURESTI	GREAT BRITAIN	285124.1	8370.0	6981.0
3	COMCEH SA	CALARASI	LUXEMBOURG	242060.0	7128.0	5945.1
4	ARCTIC SA	DAMBOVITA	NETHERLAND	195452.5	5973.3	4982.0
5	RULMENTI SA	VASLUI	TURKEY	168109.2	5043.9	4206.9
6	YAZAKI COMPONENT TECHNOLOGY SRL	ARAD	JAPAN	112947.0	3300.0	2752.4
7	NOUA ERA SA	GIURGIU	CHINA	99900.0	2978.0	2483.8
8	STAR TRANSMISSION CUGIR SRL	ALBA	GERMANY	93750.0	2866.6	2390.9
9	DF COM ROMANIA SRL	BUCURESTI	CYPRUS	68733.0	2055.4	1714.3
10	EUROPOLIS PROPERTY ROMANIA SRL	BUCURESTI	AUSTRIA	68107.0	2015.0	1680.6
11	CITIBANK ROMANIA SA	BUCURESTI	U.S.A.	63650.0	1909.7	1592.8
12	MOL ROMANIA PETROLEUM PRODUCTS SRL	CLUJ	HUNGARY	52130.0	1582.0	1319.5
13	GOURMET PROD SRL	ILFOV	AUSTRIA	48464.4	1430.6	1193.2
14	MOARA LOULIS - ROMANIAN FLOUR MILLS LOULIS SA	ILFOV	GREECE	47760.0	1405.1	1171.9
15	VIPROMAX SRL	DOLJ	NETHERLAND	42806.4	1290.8	1076.6
16	FLIPPER COMIMPEX SRL	ILFOV	TURKEY	7713.7	1188.7	991.5
17	ASA CONS ROMANIA SRL	CLUJ	HUNGARY	38463.0	1167.5	973.7
18	AUTOMOBILE COMPONENTE ELECTRICE SRL	CLUJ	SPAIN	38463.0	1167.5	973.7
19	TUDORI RO SRL	BUCURESTI	LIECHTENSTEIN	38500.0	1144.2	954.3
20	RAIFFEISEN LEASING SRL	BUCURESTI	AUSTRIA	37967.0	1114.5	929.6
21	SOCIETATE COMERCIALA DE ASIGURARE REASIGURARE ELENO-ROMANA GARANTA SA	BUCURESTI	GREECE	36328.5	1076.3	897.7
22	BANVIT ALIMENT ROMANIA SRL	BUCURESTI	NETHERLAND	34625.7	1056.9	881.5
23	FUCHS CONDIMENTE RO SRL	ARGES	GERMANY	29418.0	831.7	693.7
24	IFANTIS ROMANIA SRL	ILFOV	GREECE	25338.5	775.2	646.6
25	EURO GATTER SRL	BUCURESTI	GERMANY	2789.1	592.7	494.3
26	SCA PACKAGING ROMANIA SRL	TIMIS	NETHERLAND	19419.3	583.3	486.5
27	EUROROM CONSTRUCTII 97 SRL	BUCURESTI	GREECE	18282.0	554.0	462.1
28	REVOLUTION SRL	TIMIS	GREAT BRITAIN	14670.0	450.4	375.7
29	SANTER SYSTEM SA	BUCURESTI	NETHERLAND	14711.4	445.5	371.6
30	BAHBAHAN GRUP RO SRL	BUCURESTI	IRAQ	13301.6	400.0	333.6
31	PROVUS SERVICE PROVIDER SA	BUCURESTI	TURKEY	12244.0	372.0	310.3
32	VEL PITAR SA	VALCEA	CYPRUS	12232.7	366.6	305.8
33	EAST COAST SRL	TIMIS	LUXEMBOURG	11704.4	350.0	291.9
34	DIAL TELECOM SRL	BUCURESTI	CZECH REPUBLIC	11621.1	346.9	289.3
35	DONAU DESIGN COM SRL	ILFOV	AUSTRIA	11190.0	335.0	279.4
36	TIMELINE BUSINESS SYSTEMS SRL	SIBIU	GERMANY	10836.3	331.2	276.3
37	DELTA ASIGURARI SA	BUCURESTI	GREAT BRITAIN	10710.0	326.2	272.1
38	EGEROM PRODUCTION SA	BUCURESTI	TURKEY	7635.1	223.7	186.6
39	LUXROM SRL	SIBIU	FRANCE	6601.8	198.7	165.7
40	AKA AUTOMOTIV SRL	ARGES	TURKEY	6500.0	188.5	157.2

Table no. 21

**Number of registered companies with foreign investment capital
and amount of subscribed capital,
between 1991 and 2002**

Year	Number of companies		Amount of subscribed capital					
			Total on ROL		Total on currency		Total on currency	
	No.	%	millions ROL	%	thousands USD	%	thousands EURO	%
0	1	2	3	4				
1991 - 2002, out of which:	90597	100,0	132512245,0	100,0	9105693,7	100,0	7594610,3	100,0
1991	5484	6,1	1199835,9	0,9	872134,5	9,6	727404,4	9,6
1992	11789	13,0	584635,3	0,4	545027,5	6,0	454580,6	6,0
1993	10602	11,7	918644,7	0,7	416912,3	4,6	347726,0	4,6
1994	11075	12,2	2347052,8	1,8	910174,9	10,0	759132,0	10,0
1995	3391	3,7	731378,5	0,6	283195,6	3,1	236199,5	3,1
1996	3617	4,0	2277224,9	1,7	586911,6	6,4	489514,1	6,4
1997	5252	5,8	2411211,8	1,8	373639,6	4,1	311634,4	4,1
1998	8831	9,7	7372704,2	5,6	732315,2	8,0	610788,0	8,0
1999	7374	8,1	12304630,9	9,3	948091,7	10,4	790756,6	10,4
2000	8562	9,5	18363463,7	13,9	826460,0	9,1	689309,5	9,1
2001	7134	7,9	48343979,6	36,5	1529084,8	16,8	1275334,3	16,8
2002	7486	8,3	35657482,8	26,9	1081745,9	11,9	902231,0	11,9

Note: column no. 1 representing number of new registered from that time. The amount of subscribed capital is composed by initial subscribed capital added with any increase of capital and decreased with the subscribed capital of erased companies

Diagram no. 9

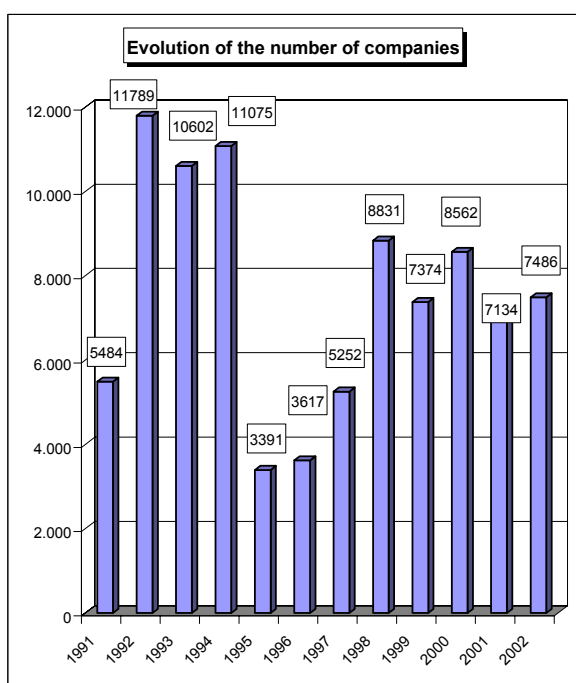
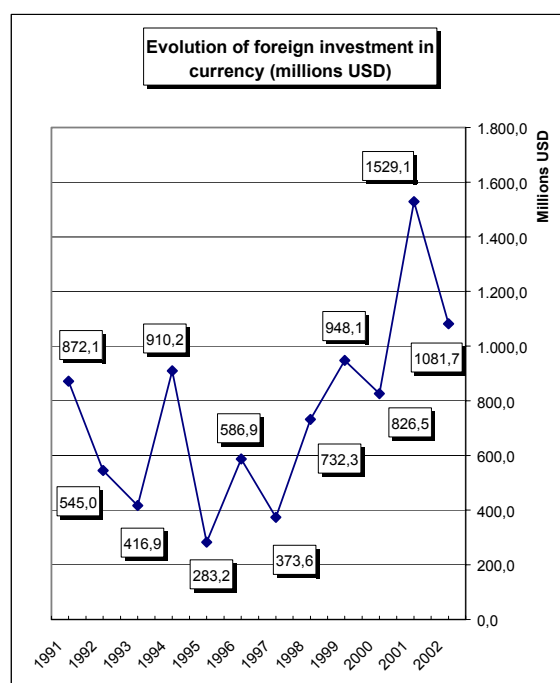


Diagram no. 10



**Number of registered companies, with foreign capital investment
and the value of the invested capital,
between 1991 and 2002**

Counties	Number of companies		Amount of subscribed capital						Order by:	
			Total on ROL		Total on currency		Total on currency			
	No.	%	millions ROL	%	thousands USD	%	thousands EURO	%		
0	1	2	3	4	5					
Total ROMANIA	90597	100,0	132512245,0	100,0	9105693,7	100,0	7594610,3	100,0	*	**
ALBA	757	0,8	821136,5	0,6	82755,7	0,9	69022,4	0,9	19	17
ARAD	2323	2,6	1662831,1	1,3	131745,0	1,4	109882,0	1,4	5	12
ARGES	763	0,8	7258962,5	5,5	299064,2	3,3	249434,7	3,3	18	7
BACAU	670	0,7	4120401,1	3,1	122461,6	1,3	102139,2	1,3	22	13
BIHOR	2233	2,5	4140874,3	3,1	189153,3	2,1	157763,5	2,1	6	10
BISTRITA-NASAUD	534	0,6	203047,8	0,2	24489,5	0,3	20425,5	0,3	25	31
BOTOSANI	214	0,2	113418,8	0,1	6036,2	0,1	5034,5	0,1	38	41
BRASOV	2169	2,4	1464814,8	1,1	109587,0	1,2	91401,1	1,2	7	15
BRAILA	362	0,4	428830,0	0,3	31365,2	0,3	26160,2	0,3	29	28
BUZAU	381	0,4	477198,2	0,4	23226,4	0,3	19372,0	0,3	28	33
CARAS-SEVERIN	603	0,7	606162,9	0,5	59109,9	0,6	49300,6	0,6	23	23
CALARASI	227	0,3	566412,7	0,4	24200,4	0,3	20184,3	0,3	36	32
CLUJ	3635	4,0	2777058,1	2,1	206009,6	2,3	171822,5	2,3	3	8
CONSTANTA	3225	3,6	11470278,0	8,7	451291,2	5,0	376399,8	5,0	4	4
COVASNA	472	0,5	366825,3	0,3	43904,8	0,5	36618,8	0,5	26	27
DAMBOVITA	419	0,5	3686914,9	2,8	138841,9	1,5	115801,2	1,5	27	11
DOLJ	1009	1,1	662472,7	0,5	189329,2	2,1	157910,1	2,1	15	9
GALATI	676	0,7	16013598,6	12,1	539739,4	5,9	450170,0	5,9	21	2
GIURGIU	235	0,3	150081,5	0,1	8592,7	0,1	7166,7	0,1	35	40
GORJ	215	0,2	14118,2	0,0	1795,4	0,0	1497,5	0,0	37	42
HARGHITA	1057	1,2	377591,2	0,3	22985,4	0,3	19171,0	0,3	14	34
HUNEDOARA	803	0,9	818705,8	0,6	66925,4	0,7	55819,1	0,7	17	19
IALOMITA	178	0,2	107699,9	0,1	15774,9	0,2	13157,0	0,2	40	37
IASI	1182	1,3	547580,0	0,4	66828,2	0,7	55738,1	0,7	12	20
MARAMURES	1079	1,2	1727674,6	1,3	76514,9	0,8	63817,3	0,8	13	18
MEHEDINTI	314	0,3	378300,4	0,3	18181,2	0,2	15164,0	0,2	31	35
MURES	1611	1,8	2176835,7	1,6	118590,1	1,3	98910,1	1,3	9	14
NEAMT	538	0,6	626816,0	0,5	59493,4	0,7	49620,5	0,7	24	22
OLT	260	0,3	530253,4	0,4	29281,2	0,3	24422,0	0,3	34	29
PRAHOVA	1382	1,5	4680908,8	3,5	356538,1	3,9	297370,9	3,9	11	6
SALAJ	286	0,3	157898,9	0,1	12763,1	0,1	10645,1	0,1	32	39
SATU MARE	877	1,0	846618,6	0,6	60444,8	0,7	50414,0	0,7	16	21
SIBIU	1607	1,8	682182,9	0,5	88054,7	1,0	73442,1	1,0	10	16
SUCEAVA	743	0,8	652553,3	0,5	46117,2	0,5	38464,1	0,5	20	26
TELEORMAN	157	0,2	852643,4	0,6	52591,8	0,6	43864,2	0,6	42	24
TIMIS	5413	6,0	5199771,4	3,9	433310,3	4,8	361402,7	4,8	2	5
TULCEA	208	0,2	249062,1	0,2	15323,1	0,2	12780,2	0,2	39	38
VASLUI	168	0,2	362345,5	0,3	18057,4	0,2	15060,8	0,2	41	36
VALCEA	348	0,4	326572,8	0,2	46583,9	0,5	38853,4	0,5	30	25
VRANCEA	285	0,3	110881,1	0,1	26161,6	0,3	21820,1	0,3	33	30
MUN. BUCURESTI	48821	53,9	48267154,2	36,4	4288204,0	47,1	3576579,6	47,1	1	1
ILFOV	2158	2,4	5826756,9	4,4	504270,5	5,5	420587,2	5,5	8	3

*) number of companies

Table no. 23

**Number of registered companies, with foreign capital investment
and the value of the invested capital, on economic development areas,
between 1991 and 2002**

Economic development areas	Number of companies		Amount of subscribed capital						Order by:	
			Total on ROL		Total on currency		Total on currency			
	No.	%	millions ROL	%	thousands USD	%	thousands EURO	%		
0	1	2	3	4	5					
Total ROMANIA	90597	100,0	132512245,0	100,0	9105693,7	100,0	7594610,3	100,0	*	**
NORTH-EAST	3515	3,9	6423114,7	4,8	318994,0	3,5	266057,2	3,5	6	7
SOUTH-EAST	5137	5,7	28749847,9	21,7	1087106,9	11,9	906702,3	11,9	5	2
SOUTH-MUNTENIA	3361	3,7	17303623,8	13,1	895603,9	9,8	746979,0	9,8	7	3
SOUTH-WEST OLTENIA	2146	2,4	1911717,6	1,4	285171,0	3,1	237847,1	3,1	8	8
WEST	9142	10,1	8287471,2	6,3	691090,5	7,6	576404,5	7,6	2	4
NORTH-WEST	8644	9,5	9853172,3	7,4	569375,3	6,3	474887,9	6,3	3	5
CENTER	7673	8,5	5889386,4	4,4	465877,7	5,1	388565,6	5,1	4	6
BUCHAREST-ILFOV	50979	56,3	54093911,0	40,8	4792474,5	52,6	3997166,7	52,6	1	1

Table no. 24

**Number of registered companies, with foreign capital investment
and the value of the invested capital, on continents
between 1991 and 2002**

Continent	Number of companies		Amount of subscribed capital						Order by:	
			Total on ROL		Total on currency		Total on currency			
	No.	%	millions ROL	%	thousands USD	%	thousands EURO	%		
0	1	2	3	4	5					
Total ROMANIA	90597	100,0	132512245,0	100,0	9105693,7	100,0	7594610,3	100,0	*	**
EUROPE	54843	60,5	102535982,2	77,4	7077559,7	77,7	5903043,6	77,7	1	1
AFRICA	2098	2,3	186322,0	0,1	31990,3	0,4	26681,5	0,4	4	6
NORTH AMERICA	4325	4,8	6755289,8	5,1	768217,3	8,4	640732,2	8,4	3	2
SOUTH AMERICA	579	0,6	3265580,3	2,5	151857,5	1,7	126656,9	1,7	5	5
ASIA	32116	35,4	3792589,5	2,9	554699,3	6,1	462647,3	6,1	2	3
OCEANIA	440	0,5	15975945,7	12,1	521257,6	5,7	434755,3	5,7	6	4

Table no. 25

**Number of registered companies, with foreign capital investment
and the value of the invested capital, on economic groups,
between 1991 and 2002**

Economic groups	Number of companies		Amount of subscribed capital						Order by:	
			Total on ROL		Total on currency		Total on currency			
	No.	%	millions ROL	%	thousands USD	%	thousands EURO	%		
0	1	2	3	4	5					
Total ROMANIA	90597		132512245,0		9105693,7		7594610,3		*	**
U.E.	36388	40,2	83653041,7	63,1	5482690,7	60,2	4572842,0	60,2	2	2
A.E.L.S.	1430	1,6	4711594,7	3,6	324823,1	3,6	270918,9	3,6	4	3
O.E.C.D.	55149	60,9	103516561,2	78,1	7475372,0	82,1	6234839,3	82,1	1	1
C.E.F.T.A.	4893	5,4	4146017,2	3,1	264658,4	2,9	220738,5	2,9	3	4

Note: Each economic group's weight is calculated in total Romania.

Diagram no. 11

Percentage of companies with foreign investment,
between 1991 and 2002, on fields of activity*

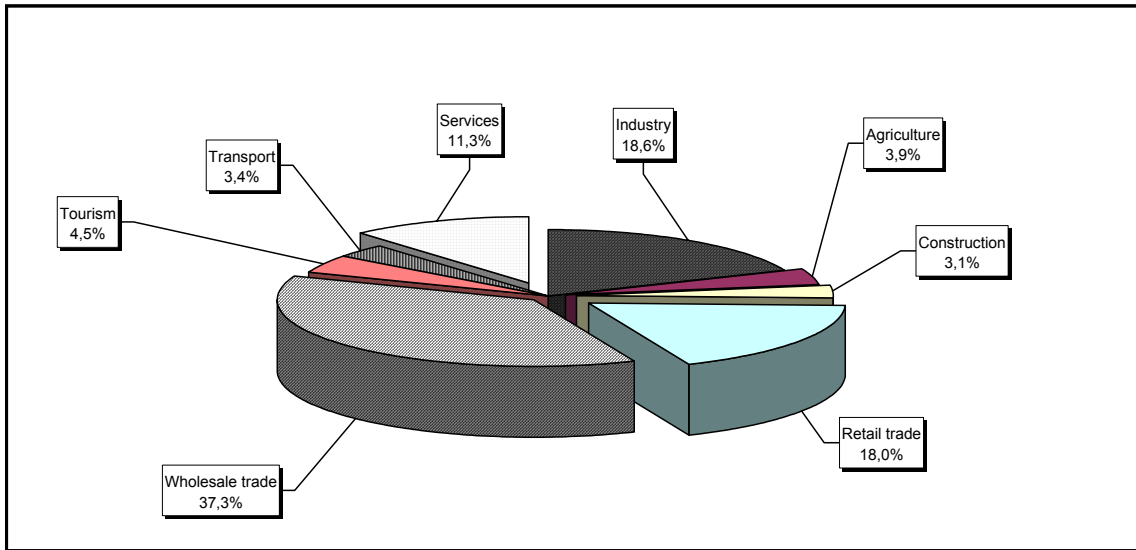
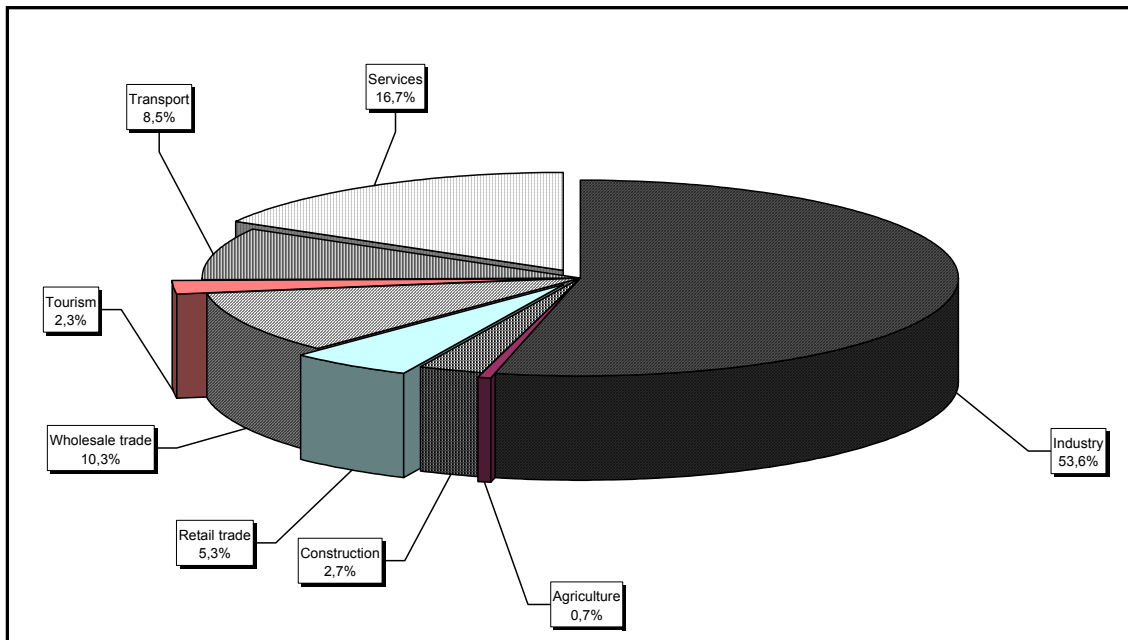


Diagram no. 12

Percentage of foreign currency invested capital** in companies
with foreign investment, between 1991 and 2002, on fields of activity



*) Calculated on main activity

Table no. 26

**Countries classification on foreign
investment capital registered
between 1991 and December 2002**

No. crt.	Countries	Number of companies		Amount of subscribed capital					
				Total on ROL		Total on currency		Total on currency	
		No.	%	millions ROL	%	thousands USD	%	thousands EURO	%
0	1	2		3		4		5	
	Total ROMANIA, out of which:	90597	100,00	132512245,0	100,00	9105693,7	100,00	7594610,3	100,00
1	NETHERLAND	1561	1,72	25914396,2	19,56	1593098,9	17,50	1328725,3	17,50
2	GERMANY	10205	11,26	13040606,3	9,84	898486,7	9,87	749383,5	9,87
3	U.S.A.	3499	3,86	6358654,7	4,80	694791,6	7,63	579491,4	7,63
4	FRANCE	2818	3,11	9722440,7	7,34	666546,5	7,32	555933,6	7,32
5	AUSTRIA	2521	2,78	12186218,7	9,20	567553,5	6,23	473368,4	6,23
6	ITALY	12413	13,70	5511102,8	4,16	557053,3	6,12	464610,7	6,12
7	ANTILELE OLANDEZE	7	***	15304611,8	11,55	485300,9	5,33	404765,5	5,33
8	CYPRUS	1018	1,12	5735028,2	4,33	436634,3	4,80	364175,2	4,80
9	TURKEY	8214	9,07	3259131,9	2,46	407895,7	4,48	340205,7	4,48
10	GREECE	2347	2,59	4443265,6	3,35	293175,7	3,22	244523,4	3,22
11	GREAT BRITAIN	1478	1,63	3090357,3	2,33	276547,2	3,04	230654,4	3,04
12	SWITZERLAND	1145	1,26	3984314,2	3,01	257714,8	2,83	214947,2	2,83
13	SOUTH KOREA	76	0,08	761241,0	0,57	238366,4	2,62	198809,6	2,62
14	HUNGARY	3963	4,37	3863811,7	2,92	235712,7	2,59	196596,3	2,59
15	LUXEMBOURG	194	0,21	1877082,6	1,42	164139,6	1,80	136900,7	1,80
16	SPAIN	520	0,57	511335,0	0,39	147688,9	1,62	123180,1	1,62
17	I.VIRGINE BRIT.	163	0,18	3051307,1	2,30	120551,2	1,32	100545,8	1,32
18	PORTUGAL	75	0,08	3821599,5	2,88	116673,5	1,28	97311,6	1,28
19	SWEDEN	732	0,81	2417047,3	1,82	108001,6	1,19	90078,8	1,19
20	WITH OUT CITIZENSHIP	21	0,02	6881,4	***	75669,2	0,83	63112,0	0,83
21	CANADA	826	0,91	396635,0	0,30	73425,8	0,81	61240,8	0,81
22	A.R. OF SYRIA	5175	5,71	265334,6	0,20	55546,0	0,61	46328,2	0,61
23	CHINA	8096	8,94	722180,4	0,54	54209,5	0,60	45213,5	0,60
24	BELGIUM	1069	1,18	578750,8	0,44	53611,0	0,59	44714,3	0,59
25	LIECHTENSTEIN	146	0,16	503460,4	0,38	49011,6	0,54	40878,2	0,54
26	IRAQ	5675	6,26	370249,1	0,28	45231,5	0,50	37725,3	0,50
27	JAPAN	119	0,13	870641,9	0,66	41473,9	0,46	34591,3	0,46
28	LEBANON	3214	3,55	314716,0	0,24	40884,8	0,45	34100,0	0,45
29	ISRAEL	2335	2,58	141194,7	0,11	27586,9	0,30	23008,9	0,30
30	IRELAND	169	0,19	224895,9	0,17	24907,2	0,27	20773,9	0,27
31	GIBRALTAR	22	0,02	434394,0	0,33	24723,3	0,27	20620,5	0,27
32	FORMER YUGOSLAVIE	707	0,78	67822,3	0,05	21857,5	0,24	18230,3	0,24
33	IRAN	2535	2,80	113945,3	0,09	17962,2	0,20	14981,4	0,20
34	PANAMA	112	0,12	78545,6	0,06	16382,2	0,18	13663,6	0,18
35	MONACO	23	0,03	316686,0	0,24	15803,3	0,17	13180,7	0,17
36	JORDAN	3022	3,34	72354,8	0,05	13834,6	0,15	11538,8	0,15
37	MARSHALL ISLANDS	6	***	416921,6	0,31	13788,5	0,15	11500,3	0,15
38	DENMARK	234	0,26	283852,2	0,21	13411,8	0,15	11186,2	0,15
39	MOLDAVIA	1398	1,54	115585,4	0,09	13307,5	0,15	11099,1	0,15
40	ICELAND	11	0,01	137336,0	0,10	12728,7	0,14	10616,4	0,14
41	BULGARIA	451	0,50	77441,5	0,06	10211,5	0,11	8516,9	0,11
42	AUSTRALIA	374	0,41	47278,9	0,04	10098,7	0,11	8422,8	0,11
43	CAMEROON	11	0,01	32709,4	0,02	9133,6	0,10	7617,9	0,10
44	EGYPT	1245	1,37	48777,0	0,04	9012,6	0,10	7517,0	0,10
45	CZECH REPUBLIC	183	0,20	40073,6		8897,3	0,10	7420,8	0,10
46	INS. VIRGINE AMR.	33	0,04	87847,6	0,07	7935,6	0,09	6618,7	0,09
47	CAYMAN ISLANDS	7	***	52711,4	0,04	6460,9	0,07	5388,7	0,07
48	POLAND	202	0,22	57624,2	0,04	6098,2	0,07	5086,2	0,07

