



MINISTRY OF JUSTICE

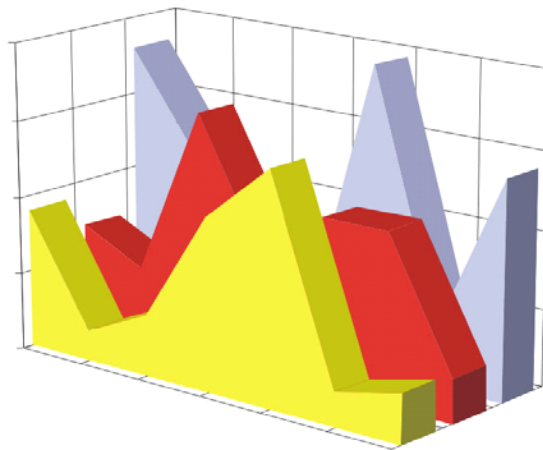
THE NATIONAL TRADE REGISTER OFFICE

Bucharest, 2, Octavian Goga Blvd., sector 3; Phone: +40 - 21 - 320.60.13; Fax: +40 - 21 - 320.58.29; Website: www.onrc.ro; E-mail: onrc@onrc.ro

COMPANIES BY FOREIGN DIRECT INVESTMENT

STATISTICAL SYNTHESIS

**OF THE NATIONAL TRADE REGISTER'S DATA
ON 30th OF NOVEMBER 2004 - PROVISORY DATA**



- No. 79 -

**MINISTRY OF JUSTICE
THE NATIONAL TRADE REGISTER OFFICE**

- Operations such as incorporation of companies, changes in statutory documents and strike-off dissolution of companies are being regulated by Law No.26/1990 reissued, Law No.31/1990, reissued, OUG No.76/2001, reissued and Methodology Norms No. P/608/1998.

- This synthesis presents the trends on operations regarding companies by foreign direct investment registered in The Trade Register Office attached to the law court of Bucharest and in The Trade Register Offices attached to the law court in each county of Romania.

- Information provided by the Central Trade Register concern operations compulsory by law to be registered in the trade registers attached to the law courts.

• No part of the content of this publication, in original or in any modified format, October be reproduced, stored in a retrieval system, or transmitted, in any form or by any means, without the prior permission in writing of The Ministry of Justice – The National Trade Register Office.

• The content of this publication October be referred to in articles, studies, books, as supporting or explanatory data under the condition only, the source of the information to be clearly and precisely specified.

Table of Contents

	Page
1 Explanatory Note	1
2.1 Tables and statistical graphics for October 2004	3
Table No.1 – Number of companies by foreign direct investment and the amount of the subscribed capital, balance account at 31 st of October 2004	3
Diagram No. 1 – The structure of the number of companies	3
Diagram No. 2 – The structure of investment, in equivalent of currency	3
Table No.2 – Classification of companies by foreign direct investment by the investors' countries of origin, balance account at 31 st of October 2004	4
Diagram No. 3 – The structure upon sector of activity of companies by foreign direct investment, incorporated between 1991 and October 2004	5
Diagram No. 4 – The structure upon sector of activity in the amount of subscribed capital in companies by foreign direct investment, during 1991-October 2004	5
Table No. 3 – The number of companies by foreign direct investment and the amount of the subscribed capital, balance account at the end of each month of 2004	6
Diagram No. 5 – Trend in the number of companies' balance account	6
Diagram No. 6 – Trend of foreign investment balance account, in equivalent of currency	6
Table No. 4 – Comparative data on new companies by foreign direct investment and the subscribed capital, between January– October 2003 and 2004	7
Diagram No. 7 – Dynamics of the number of new companies by foreign direct investment, between January– October and 2004	7
Diagram No. 8 – Dynamics of the amount of foreign direct investment in new companies, between January– October 2003 and 2004	7
Table No. 5 – Incorporation of companies by foreign direct investment, during October 2004	8
Table No. 6 – Statutory increase of the issued capital, in companies by foreign direct investment during October 2004	9
Table No. 7 – Strike-off of companies by foreign direct investment, from the trade register, during October 2004	10
Table No. 8 – Changes by cession in the issued capital of the companies by foreign direct investment, during October 2004	11
Table No. 9 – Incorporation of companies by foreign direct investment, according to the development regions, during October 2004	12
Table No. 10 – Statutory increase in the issued capital of companies by foreign direct investment according to the development regions, during October 2004	12
Table No. 11 – Strike-off of companies by foreign direct investment and the amount of their issued capital, according to the development regions, during October 2004	12
Table No. 12 – Incorporation of companies by foreign direct investment, by continents according to the investors' country of origin, during October 2004	13
Table No. 13 – Increase in the issued capital of companies by foreign direct investment, by continents according to the investors' country of origin, during October 2004	13
Table No. 14 – Strike-off of companies by foreign direct investment and their issued capital, by continents according to the investors' country of origin, during October 2004	13
Table No. 15 – Incorporation of companies by foreign direct investment, by economical groups of countries according to the investors' country of origin, during October 2004	14
Table No. 16 – Increase in the issued capital of companies by foreign direct investment, by economical groups of countries according to the investors' country of origin, during October 2004	14
Table No. 17 – Strike-off of companies by foreign direct investment and their issued capital, by economical groups of countries according to the investors' country of origin, during October 2004	14

Table No. 18 – Classification by countries of origin of investors in companies by foreign direct investment, incorporated during October 2004	15
Table No. 19 – Classification by investors’ countries of origin according to the amount of the increase in the issued capital, during October 2004	16
Table No. 20 – Classification of the top 40 companies by foreign direct investment in the total subscribed capital, in equivalent of currency, during October 2004	17
2.2 Cumulative data for 1991 – 2003	18
Table No. 21 – Number of registered companies with foreign investment capital and amount of subscribed capital, between 1991 and 2003	18
Diagram No. 9 – Evolution of the number of companies	18
Diagram No. 10 – Evolution of foreign investment	18
Table No. 22 – Number of registered companies, with foreign capital investment and the value of the invested capital, between 1991 and 2003	19
Table No. 23 – Number of registered companies, with foreign capital investment and the value of the invested capital, on economic development areas, between 1991 and 2003	20
Table No. 24 – Number of registered companies, with foreign capital investment and the value of the invested capital, on continents between 1991 and 2003	20
Table No. 25 – Number of registered companies, with foreign capital investment and the value of the invested capital, on economic groups, between 1991 and 2003	20
Diagram No. 11 – Percentage of companies with foreign investment, between 1991 and 2003, on fields of activity	21
Diagram No. 12– Percentage of foreign currency invested capital in companies with foreign investment, between 1991 and 2003, on fields of activity	21
Table No. 26 – Countries classification on foreign investment capital registered between 1991 and December 2003	22

Explanatory Note

- “**Company by foreign direct investment**” should be understood as any company partially or entirely set-up with the contribution in issued capital of physical or legal persons, resident or having the registered office outside Romania’s state frontiers.

- “**Foreign investor**” is any physical or legal person resident or having the business headquarter outside Romania’s borders, being associate/shareholder in a company registered in Romania.

- “**Social capital**” known as well as “issued capital” or “initial capital” is the total contribution in cash and assets subscribed by shareholders/associates while setting-up and registering a company or while increasing the initial capital during the company’s life.

The capital *subscribed* by a foreign investor should be, due to the Romanian legislation in force, in local currency ROL or/and in other convertible currency.

The increase in capital by changes in the statutory documents includes:

- foreign investors’ contributions from new own resources, in cash and/or assets, in ROL and/or currency;
- contributions of foreign investors from dividends obtained in Romania;
- getting in possession of equities/shares by a non-resident person from a resident one.

The changes in capital by decrease/(increase) through cession include:

- the contributions in capital of non-resident associates/shareholders yielded to/(received from) resident associates/shareholders, in ROL/currency;

- The **foreign direct investment in Romania (Is)** equals to the total value of the direct foreign investment subscribed in the new registered company (**I**) *plus* the increase in issued capital through statutory documents(**M**), *plus/minus* the cession of the issued capital *by/to* resident associates/shareholders (**C**), *minus* the subscribed capital in the companies being struck-off from the Trade Register (**R**), that is:

$$\mathbf{Is = I + M \pm C - R}$$

Usual Terms:

- **incorporation** – represents the registration of the company in the trade registry awarding the quality of legal person.

- **other statutory documents** – represent the official registration of the changes occurred in a company’s life, such as: changes of the registered office address, increase or decrease of the issued capital, merger, liquidation, strike-off, etc.

- **strike-off** – represents the removal of a company from the trade registry, due to dissolution and liquidation, being also the very moment the company loses its quality of legal person. Data also include the companies under the provisions of Law No. 314/2001.

- **Operations** represent all the records in the trade registry including incorporations, other statutory documents and strike-off of companies by foreign direct investment, irrespective of the object of activity and the company’s type.

• **Terms used in tables and charts**

➤ **Number of companies:** depending on the specific table represents either the number of companies incorporated in the reference period, or the number of companies registering an increase of the issued capital, or the number of companies being struck-off from the trade registry.

➤ **Amount of the subscribed capital:**

- **total, in ROL:** the amount of the subscribed capital resulted from adding the amount subscribed in the local currency/ROL and the amount subscribed in foreign convertible currency being expressed in ROL, according to the exchange rate communicated by the National Bank of Romania at the date the deed was issued.

- **total, in equivalent of currency:**

USD : the amount of the resulted from adding and expressing in USD the convertible currency and the local currency (ROL), according to the exchange rate communicated by the National Bank of Romania at the date the deed was issued.

Euro : the balance account registered in the end of each month, calculated in equivalent of USD and expressed in Euro according to the exchange rate EUR/USD communicated by National Bank of Romania in the last working day of the due month.

➤ **Regional development:**

<i>North-East:</i>	Suceava, Botoşani, Neamţ, Iaşi, Bacău, Vaslui.
<i>South-East:</i>	Vrancea, Galaţi, Buzău, Brăila, Tulcea, Constanţa.
<i>South-Muntenia:</i>	Argeş, Dâmboviţa, Prahova, Teleorman, Giurgiu, Călăraşi, Ialomiţa.
<i>South-West Oltenia:</i>	Gorj, Vâlcea, Dolj, Mehedinţi, Olt.
<i>West:</i>	Arad, Caraş-Severin, Hunedoara, Timiş.
<i>North-West:</i>	Bihor, Bistriţa, Cluj, Satu Mare, Sălaj, Maramureş.
<i>Center:</i>	Alba, Braşov, Covasna, Harghita, Mureş, Sibiu.
<i>Bucharest-Ilfov:</i>	Bucureşti, Ilfov.

Source:

The integrated IT system of the trade registry is designed by The National Trade Registry Office according to the provisions of the related legislation in force. The source of information is the computerised system of the trade registers handled by the Trade Register Offices attached to the law courts.

**Number of companies by foreign direct investment
and the amount of the subscribed capital,
balance account at 30 November 2004**

Balance account by end of period	Number of companies		Amount of subscribed capital					
			Total in ROL		Total in currency		Total in currency	
	No.	%	million ROL	%	thousand USD	%	thousand EURO	%
0	1		2		3		4	
30 November 2004, out of which	106381	109,4	234424626,6	131,7	12401793,7	117,4	9352821,6	117,5
at 31 December 2003	97241	100,0	178025694,7	100,0	10561126,2	100,0	7959940,6	100,0

Note: column No. 1 shows the number of companies incorporated in the due period. The data concerning the amount of the subscribed capital include the records on the issued capital in companies incorporated in the related period plus the records of increase in capital and minus the subscribed capital in companies being struck-off from the trade register in the same period. The percentage inserted in column No. 1,2,3 and 4 shows the trend compared to the records of December 2003.

Diagram no. 1

Diagram no. 2

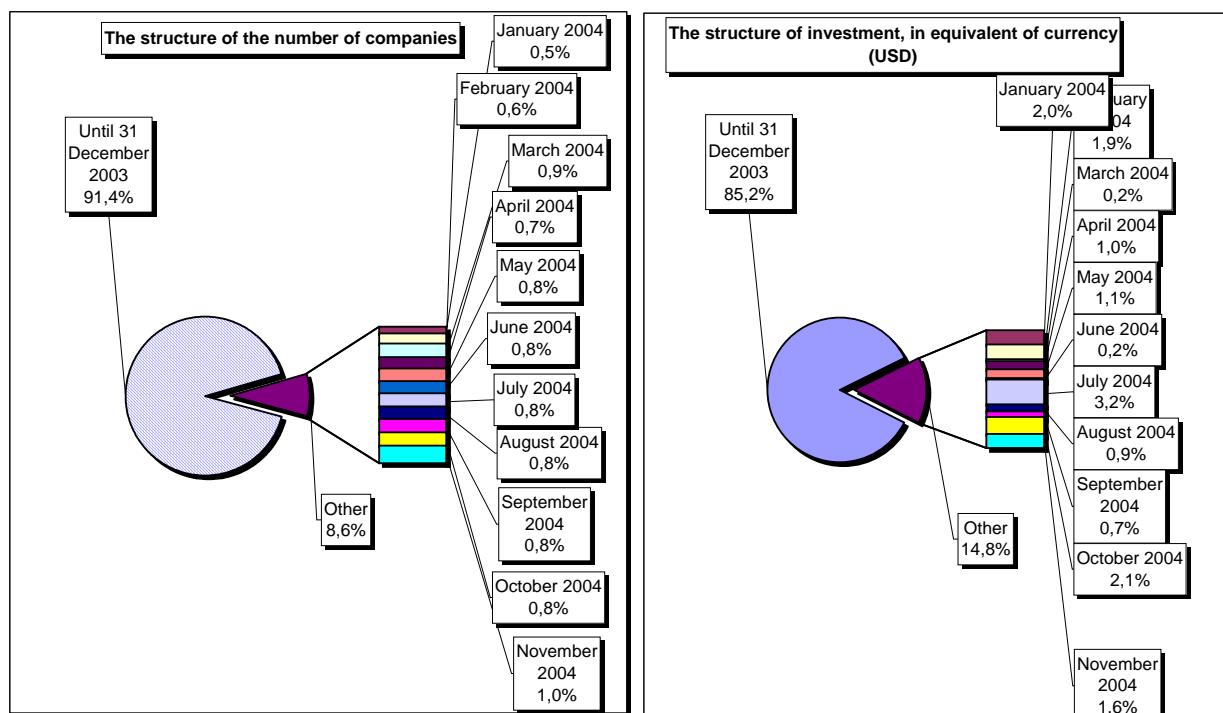


Table no. 2

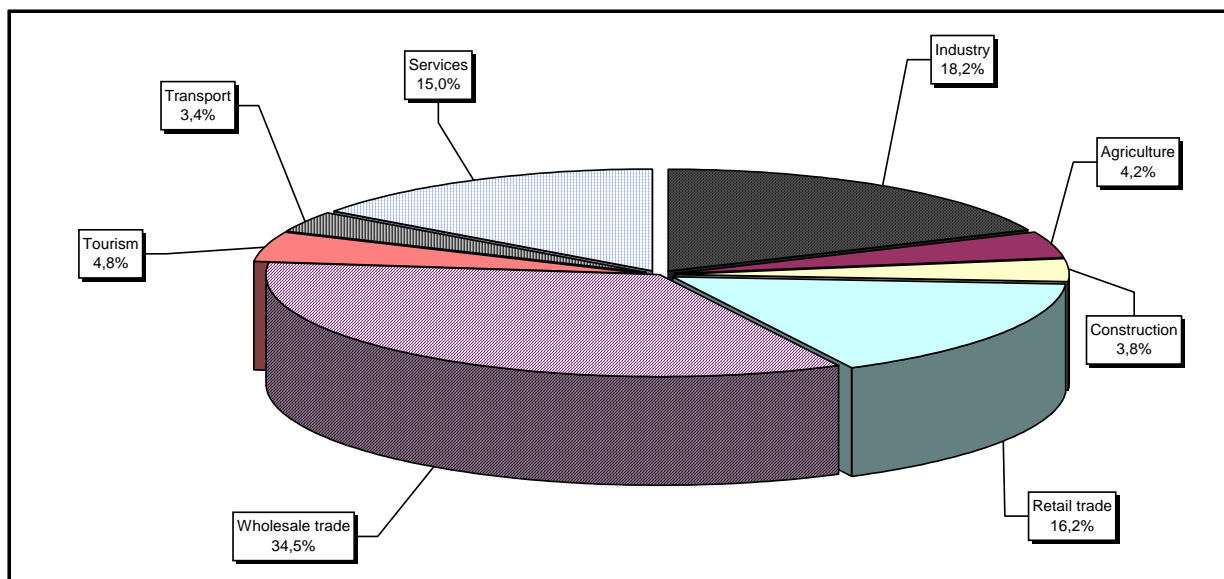
**Classification* of companies by foreign direct investment
by the investors' countries of origin,
balance account at 30 November 2004**

No. crt.	Countries	Companies by foreign investment		Amount of subscribed capital					
				Total in local currency		Total in equivalent of currency		Total in equivalent of currency	
		No.	%	million ROL	%	thousand USD	%	thousand EURO	%
0	1	2		3		4		5	
	Total ROMANIA	106381	100,0	234424626,6	100,0	12401793,7	100,0	9352821,6	100,0
1	NETHERLAND	1993	1,87	43519729,9	18,56	2133009,7	17,20	1607653,4	17,19
2	FRANCE	3596	3,38	32906975,6	14,04	1506888,7	12,15	1135744,8	12,14
3	GERMANY	12014	11,29	19318277,5	8,24	1025744,4	8,27	773105,5	8,27
4	U.S.A.	4163	3,91	10475341,9	4,47	884555,3	7,13	666691,0	7,13
5	ITALY	16659	15,66	11760677,5	5,02	704181,6	5,68	530743,0	5,67
6	ANTILELE OLANDEZE	9	***	20802993,6	8,87	649841,9	5,24	489787,0	5,24
7	AUSTRIA	3165	2,98	15020621,5	6,41	624029,8	5,03	470332,4	5,03
8	CYPRUS	1335	1,25	9119896,6	3,89	586217,0	4,73	441832,9	4,72
9	GREAT BRITAIN	1920	1,80	12013937,3	5,12	519776,8	4,19	391756,8	4,19
10	TURKEY	9167	8,62	4781716,4	2,04	452346,4	3,65	340934,3	3,65
11	SWITZERLAND	1387	1,30	6135292,4	2,62	389959,7	3,14	293913,3	3,14
12	HUNGARY	4948	4,65	5888094,8	2,51	345081,8	2,78	260088,8	2,78
13	I.VIRGINE BRIT.	208	0,20	10932795,6	4,66	343731,7	2,77	259071,2	2,77
14	GREECE	2884	2,71	5851396,8	2,50	327063,2	2,64	246508,1	2,64
15	LUXEMBOURG	256	0,24	4790290,1	2,04	274034,1	2,21	206540,0	2,21
16	SOUTH KOREA	85	0,08	493082,8	0,21	217366,5	1,75	163829,5	1,75
17	SPAIN	836	0,79	1415576,8	0,60	174164,1	1,40	131267,8	1,40
18	CHINA	8427	7,92	3426573,5	1,46	150504,0	1,21	113435,1	1,21
19	SWEDEN	827	0,78	2580322,9	1,10	111373,7	0,90	83942,6	0,90
20	BELGIUM	1329	1,25	1059696,2	0,45	76333,1	0,62	57532,4	0,62
21	WITH OUT CITIZENSHIP	21	0,02	6696,6	***	75663,3	0,61	57027,6	0,61
22	JAPAN	159	0,15	1824200,7	0,78	68836,1	0,56	51881,9	0,55
23	LIECHTENSTEIN	158	0,15	865372,2	0,37	67755,8	0,55	51067,7	0,55
24	A.R. OF SYRIA	5356	5,03	728835,4	0,31	66892,9	0,54	50417,3	0,54
25	CANADA	1019	0,96	459073,3	0,20	58406,7	0,47	44021,3	0,47
26	IRAQ	5846	5,50	631447,7	0,27	54986,9	0,44	41443,8	0,44
27	LEBANON	3397	3,19	657806,5	0,28	49161,5	0,40	37053,1	0,40
28	MARSHALL ISLANDS	7	***	1189471,9	0,51	36768,1	0,30	27712,2	0,30
29	ISRAEL	2903	2,73	335142,1	0,14	31505,0	0,25	23745,4	0,25
30	GIBRALTAR	29	0,03	494747,4	0,21	27036,2	0,22	20377,2	0,22
31	FORMER YUGOSLAVIE	747	0,70	91729,7	0,04	22740,6	0,18	17139,6	0,18
32	IRAN	2656	2,50	234714,8	0,10	22513,7	0,18	16968,6	0,18
33	ICELAND	12	0,01	217106,2	0,09	22189,5	0,18	16724,3	0,18
34	DENMARK	295	0,28	446953,4	0,19	18519,1	0,15	13957,9	0,15
35	PANAMA	120	0,11	135142,2	0,06	17801,3	0,14	13416,9	0,14
36	IRELAND	262	0,25	127726,9	0,05	16584,7	0,13	12499,9	0,13
37	JORDAN	3089	2,90	166790,5	0,07	16536,7	0,13	12463,8	0,13
38	MOLDAVIA	1902	1,79	153853,8	0,07	15146,4	0,12	11415,9	0,12
39	POLAND	246	0,23	344947,0	0,15	14566,9	0,12	10979,1	0,12
40	KUWEIT	148	0,14	28037,8	0,01	12041,9	0,10	9076,0	0,10
41	EGYPT	1305	1,23	135682,5	0,06	11801,4	0,10	8894,8	0,10
42	BULGARIA	583	0,55	112929,5	0,05	11138,2	0,09	8394,9	0,09
43	NEW ZEELAND	11	0,01	352081,9	0,15	11067,7	0,09	8341,7	0,09
44	AUSTRALIA	433	0,41	38603,5	0,02	9418,2	0,08	7098,5	0,08
45	SLOVENIA	49	0,05	238009,2		9157,9	0,07	6902,3	0,07
46	CZECH REPUBLIC	230	0,22	52360,9	0,02	9149,8	0,07	6896,2	0,07
47	CAMEROON	15	0,01	31739,4	0,01	9036,7	0,07	6811,0	0,07
48	INS. VIRGINE AMR.	34	0,03	82619,6	0,04	7884,8	0,06	5942,8	0,06
49	THAILANDA	19	0,02	155972,2	0,07	6702,2	0,05	5051,4	0,05
50	CAYMAN ISLANDS	8	***	52739,4	0,02	6461,8	0,05	4870,3	0,05

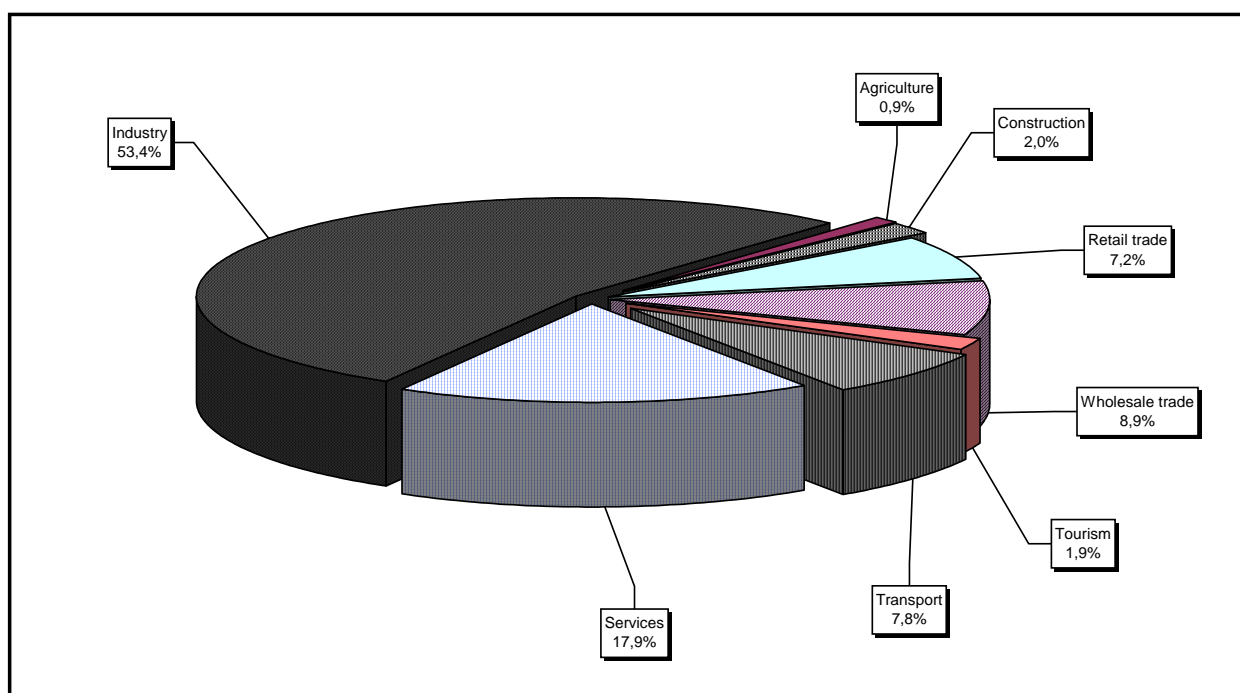
*) includes countries selected upon the amount of the foreign direct investment, in equivalent of currency USD, ranking on a descending scale (col 4)

*** Less than 0,01%

The structure upon sector of activity* of companies by foreign direct investment, incorporated between 1991 and November 2004



The structure upon sector of activity in the amount of subscribed capital** in companies by foreign direct investment, during 1991 - November 2004



*) Calculated upon the main sector of activity declared

**) Calculated upon the total amount of the subscribed capital, in equivalent of currency (USD)

Table no. 3

**The number of companies by foreign direct investment
and the amount of the subscribed capital,
balance account in the end of each month of 2004**

balance account at 30 April 2004	Number of companies		Amount of subscribed capital					
			Total in local currency		Total in equivalent of currency		Total in equivalent of currency	
	No.	%	million ROL	%	thousand USD	%	thousand EURO	%
0	1		2		3		4	
DECEMBER 2003	97241	100,0	178025694,7	100,0	10561126,2	100,0	7959940,6	100,0
JANUARY 2004	97818	100,6	182274631,8	102,4	10812115,0	102,4	8149111,4	102,4
FEBRUARY 2004	98477	101,3	188905692,9	106,1	11042685,8	104,6	8322893,0	104,6
MARCH 2004	99393	102,2	188725273,6	106,0	11073381,6	104,9	8346028,5	104,9
APRIL 2004	100163	103,0	193008179,2	108,4	11201063,8	106,1	8442262,8	106,1
MAY 2004	100989	103,9	197697614,2	111,1	11336005,2	107,3	8543968,4	107,3
JUNE 2004	101815	104,7	198774478,5	111,7	11358188,1	107,5	8560687,7	107,5
JULY 2004	102692	105,6	211478480,7	118,8	11749580,4	111,3	8855680,8	111,3
AUGUST 2004	103537	106,5	213943693,1	120,2	11857027,8	112,3	8942230,5	112,3
SEPTEMBER 2004	104429	107,4	216715473,8	121,7	11940690,0	113,1	9005286,8	113,1
OCTOBER 2004	105325	108,3	227391105,0	127,7	12206389,8	115,6	9205545,3	115,6
NOVEMBER 2004	106381	109,4	234424626,6	131,7	12401794	117,4	9352822	117,5

Diagram no. 5

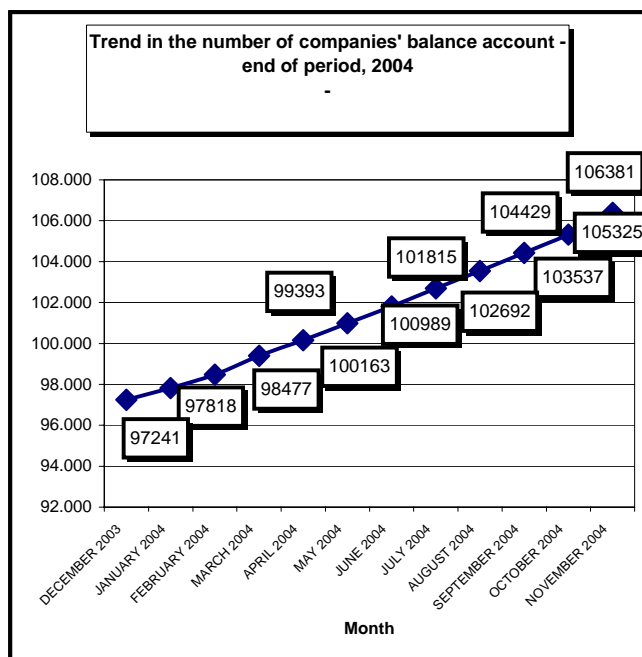


Diagram no. 6

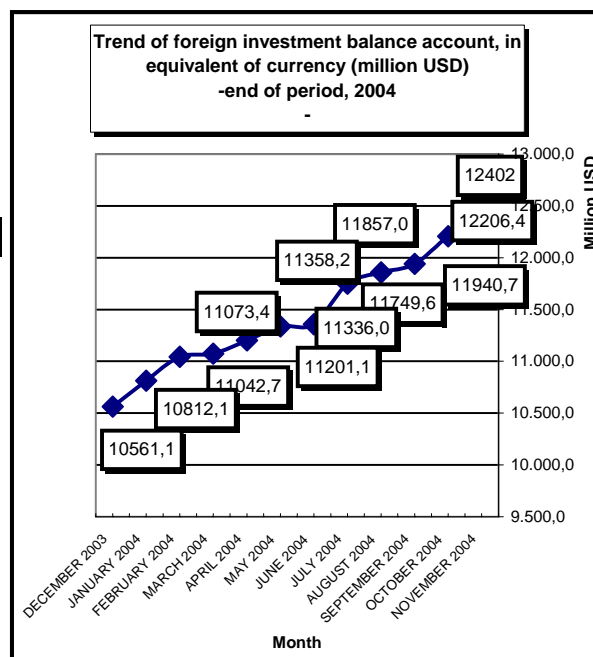


Table no. 4

Comparative data on new companies by foreign direct investment and the subscribed capital, between January - October 2003 and 2004

Month	2003				2004					
	New companies		Subscribed capital, in equivalent of currency		New companies		Trend related to 2003 (5/1)	Subscribed capital, in equivalent of currency		Trend related to 2003 (8/3)
	No.	%	thousand USD	%	No.	%	%	thousand USD	%	%
0	1	2	3	4	5	6	7	8	9	10
Jan-December out of which:	6041	100,0	61094,3	100,0	9140	100,0	151,3	187084,9	100,0	306,2
JANUARY	697	11,5	9000,0	14,7	577	6,3	82,8	3021,5	1,6	33,6
FEBRUARY	624	10,3	6077,9	9,9	659	7,2	105,6	11644,2	6,2	191,6
MARCH	500	8,3	3731,7	6,1	916	10,0	183,2	10500,4	5,6	281,4
APRIL	441	7,3	3259,4	5,3	770	8,4	174,6	18694,2	10,0	573,6
MAY	440	7,3	9318,2	15,3	826	9,0	187,7	5729,2	3,1	61,5
JUNE	578	9,6	3794,4	6,2	826	9,0	142,9	14123,7	7,5	372,2
JULY	638	10,6	2138,3	3,5	877	9,6	137,5	5835,7	3,1	272,9
AUGUST	553	9,2	4167,3	6,8	845	9,2	152,8	3317,1	1,8	79,6
SEPTEMBER	583	9,7	2219,5	3,6	892	9,8	153,0	6264,2	3,3	282,2
OCTOBER	479	7,9	15246,6	25,0	896	9,8	187,1	2780,0	1,5	18,2
NOVEMBER	508	8,4	2141,0	3,5	1056	11,6	207,9	105174,5	56,2	4912,4

Note: columns No. 1 and No. 5 show the number of new companies incorporated in the due period. The data on the subscribed capital include the initial capital subscribed in the related period. Columns No. 2, 4, 6 and 9 show the weight of each month in total period referred to.

Diagram no. 7

Diagram no. 8

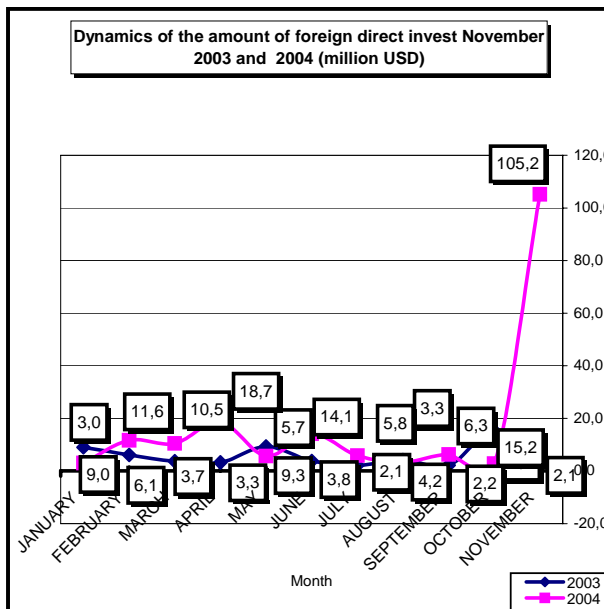
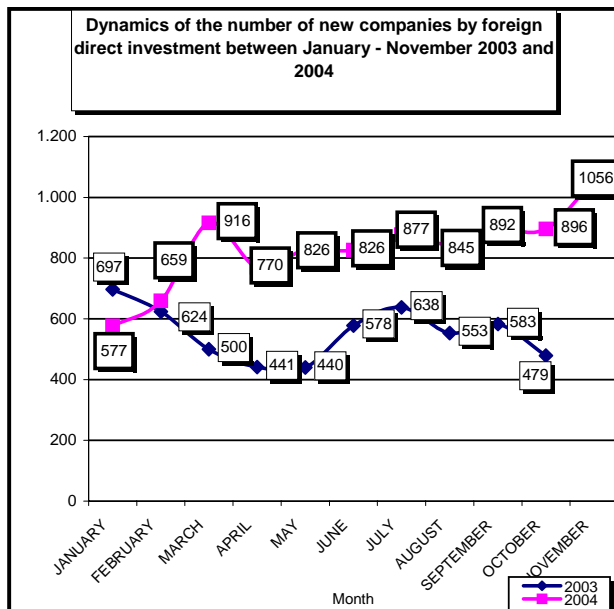


Table no. 5

**Incorporation of companies by foreign direct investment,
during November 2004**

balance account at 30 April 2004	Number of companies		Amount of subscribed capital						Ranking by:	
			Total in local currency		Total in equivalent of currency		Total in equivalent of currency			
	No.	%	million ROL	%	USD	%	EURO	%		
0	1		2		3		4		5	
Total ROMANIA	1056	100,0	3149663,0	100,0	105174519	100,0	79270232	100,0	*	**
ALBA	11	1,04	22,0	***	678	***	511	***	14	32
ARAD	40	3,79	751,0	0,02	23426	0,02	17656	0,02	5	11
ARGES	15	1,42	9188,5	0,29	274724	0,26	207060	0,26	12	4
BACAU	7	0,66	30,6	***	928	***	699	***	17	27
BIHOR	42	3,98	20455,0	0,65	620432	0,59	467621	0,59	4	3
BISTRITA-NASAUD	10	0,95	59,8	***	1816	***	1369	***	15	23
BOTOSANI	7	0,66	77,5	***	2391	***	1802	***	17	22
BRASOV	37	3,50	224,7	***	6859	***	5170	***	6	16
BRAILA	11	1,04	114,2	***	3520	***	2653	***	14	20
BUZAU	6	0,57	23,5	***	740	***	558	***	18	30
CARAS-SEVERIN	11	1,04	179,1	***	5553	***	4185	***	14	18
CALARASI	3	0,28	174,0	***	5482	***	4132	***	21	19
CLUJ	56	5,30	1723,2	0,05	54377	0,05	40984	0,05	3	8
CONSTANTA	19	1,80	883,7	0,03	26230	0,02	19770	0,02	10	10
COVASNA	5	0,47	7831,3	0,25	254426	0,24	191761	0,24	19	5
DAMBOVITA	8	0,76	52,2	***	1586	***	1195	***	16	25
DOLJ	8	0,76	25,2	***	797	***	601	***	16	28
GALATI	12	1,14	54,5	***	1699	***	1281	***	13	24
GIURGIU	1	0,09	4,0	***	125	***	94	***	23	41
GORJ	1	0,09	1,0	***	30	***	23	***	23	42
HARGHITA	21	1,99	444,0	0,01	13532	0,01	10199	0,01	9	15
HUNEDOARA	24	2,27	709,3	0,02	21307	0,02	16059	0,02	8	12
IALOMITA	5	0,47	11,8	***	376	***	283	***	19	36
IASI	10	0,95	187,2	***	5938	***	4475	***	15	17
MARAMURES	6	0,57	18,6	***	602	***	454	***	18	33
MEHEDINTI	12	1,14	86,9	***	2781	***	2096	***	13	21
MURES	17	1,61	459,7	0,01	13815	0,01	10412	0,01	11	14
NEAMT	5	0,47	15,8	***	508	***	383	***	19	35
OLT	4	0,38	6,5	***	206	***	155	***	20	40
PRAHOVA	21	1,99	529,4	0,02	16132	0,02	12159	0,02	9	13
SALAJ	4	0,38	25,4	***	792	***	597	***	20	29
SATU MARE	17	1,61	38,0	***	1189	***	896	***	11	26
SIBIU	24	2,27	8536,8	0,27	249718	0,24	188213	0,24	8	6
SUCEAVA	8	0,76	866,0	0,03	28701	0,03	21632	0,03	16	9
TELEORMAN	1	0,09	10,0	***	300	***	226	***	23	39
TIMIS	88	8,33	95253,2	3,02	3107520	2,95	2342144	2,95	2	2
TULCEA	4	0,38	23,6	***	721	***	543	***	20	31
VASLUI	1	0,09	10,0	***	318	***	240	***	23	38
VALCEA	2	0,19	12,0	***	373	***	281	***	22	37
VRANCEA	3	0,28	17,0	***	541	***	408	***	21	34
MUN. BUCURESTI	434	41,10	2993807,0	95,05	100189918	95,26	75513329	95,26	1	1
ILFOV	35	3,31	6719,9	0,21	233412	0,22	175923	0,22	7	7

*) number of companies (column 1)

**) capital in equivalent currency (column3)

*** Less than 0.01%

Note: Empty rows reveal that there are no operation in the current month

Table no. 6

**Statutory increase of the issued capital,
in companies by foreign direct investment
during November 2004**

balance account at 30 April 2004	Number of companies		Amount of subscribed capital						Ranking by:	
			Total in local currency		Total in equivalent of currency		Total in equivalent of currency			
	No.	%	million ROL	%	USD	%	EURO	%		
0	1		2		3		4		5	
Total ROMANIA	826	100,00	4233586,7	100,00	110389921	100,00	83201091	100,00	*	**
ALBA	5	0,61	12,7	***	395	***	298	***	19	36
ARAD	31	3,75	14892,3	0,35	522033	0,47	393457	0,47	3	17
ARGES	12	1,45	33124,1	0,78	1101449	1,00	830164	1,00	13	11
BACAU	8	0,97	6336,0	0,15	192244	0,17	144895	0,17	16	25
BIHOR	23	2,78	29705,6	0,70	914111	0,83	688967	0,83	6	13
BISTRITA-NASAUD	2	0,24	399,4	***	13264	0,01	9997	0,01	21	31
BOTOSANI	2	0,24	181,0	***	5484	***	4133	***	21	33
BRASOV	19	2,30	20946,4	0,49	629303	0,57	474307	0,57	9	15
BRAILA	6	0,73	10580,5	0,25	341735	0,31	257566	0,31	18	21
BUZAU	9	1,09	11839,2	0,28	382527	0,35	288311	0,35	15	20
CARAS-SEVERIN	9	1,09	309131,5	7,30	9671135	8,76	7289153	8,76	15	2
CALARASI	7	0,85	27923,5	0,66	736464	0,67	555074	0,67	17	14
CLUJ	22	2,66	32630,0	0,77	1013919	0,92	764193	0,92	7	12
CONSTANTA	24	2,91	10372,9	0,25	440452	0,40	331969	0,40	5	19
COVASNA	5	0,61	66380,8	1,57	2043636	1,85	1540292	1,85	19	7
DAMBOVITA	6	0,73	747,5	0,02	22560	0,02	17004	0,02	18	30
DOLJ	7	0,85	60433,7	1,43	1820186	1,65	1371878	1,65	17	8
GALATI	8	0,97	19108,1	0,45	582810	0,53	439265	0,53	16	16
GIURGIU	5	0,61	42,7	***	1386	***	1045	***	19	34
GORJ	5	0,61	15,3	***	467	***	352	***	19	35
HARGHITA	12	1,45	14736,2	0,35	453656	0,41	341921	0,41	13	18
HUNEDOARA	11	1,33	6091,9	0,14	206837	0,19	155893	0,19	14	24
IALOMITA	2	0,24	886,0	0,02	9783	***	7373	***	21	32
IASI	16	1,94	9141,6	0,22	281752	0,26	212357	0,26	10	22
MARAMURES	7	0,85	4528,2	0,11	183361	0,17	138200	0,17	17	26
MEHEDINTI	5	0,61	40487,7	0,96	1255716	1,14	946436	1,14	19	10
MURES	14	1,69	231895,2	5,48	7087584	6,42	5341925	6,42	11	3
NEAMT	5	0,61	829,6	0,02	26401	0,02	19898	0,02	19	29
OLT	1	0,12	2503,6	0,06	81481	0,07	61412	0,07	22	28
PRAHOVA	19	2,30	58990,6	1,39	221923	0,20	167264	0,20	9	23
SALAJ	1	0,12	1,2	***	34	***	26	***	22	38
SATU MARE	13	1,57	49928,2	1,18	1537518	1,39	1158830	1,39	12	9
SIBIU	20	2,42	89149,7	2,11	2657126	2,41	2002681	2,41	8	6
SUCEAVA	6	0,73	55,1	***	-1568	0,00	-1182	0,00	18	41
TELEORMAN	1	0,12	1,0	***	32	***	24	***	22	39
TIMIS	56	6,78	171404,9	4,05	5351020	4,85	4033074	4,85	2	4
TULCEA	3	0,36	8,3	***	245	***	185	***	20	37
VASLUI										
VALCEA	5	0,61	79,2	***	-225793	-0,20	-170181	-0,20	19	42
VRANCEA	3	0,36	2765,4	0,07	83075	0,08	62614	0,08	20	27
MUN. BUCURESTI	383	46,37	2793655,5	65,99	67801596	61,42	51102190	61,42	1	1
ILFOV	28	3,39	101644,1	2,40	2942582	2,67	2217830	2,67	4	5

*) number of companies (column 1)

**) capital in equivalent currency (column3)

*** Less than 0.01%

Note: Empty rows reveal that there are no operation in the current month

Table no. 7

**Strike-off of companies by foreign direct investment,
from the trade register, during November 2004**

balance account at 30 April 2004	Number of companies		Amount of subscribed capital						Ranking by:	
			Total in local currency		Total in equivalent of currency		Total in equivalent of currency			
	No.	%	million ROL	%	USD	%	EURO	%		
0	1		2		3		4		5	
Total ROMANIA	120	100,0	82348,7	100,0	6364416	100,0	4796872	100,0	*	**
ALBA										
ARAD	5	4,17	360,7	0,44	25210	0,40	19001	0,40	5	9
ARGES	1	0,83	8,0	***	241	***	182	***	8	20
BACAU	24	20,00	33,7	0,04	107734	1,69	81199	1,69	2	5
at 31 December 2003	6	5,00	29,0	0,04	50649	0,80	38174	0,80	4	7
BISTRITA-NASAUD										
BOTOSANI	1	0,83	106,0	0,13	3162	0,05	2383	0,05	8	14
BRASOV	3	2,50	34123,5	41,44	1010390	15,88	761533	15,88	6	3
BRAILA										
BUZAU										
CARAS-SEVERIN										
CALARASI										
CLUJ	1	0,83	65,6	0,08	2500	0,04	1884	0,04	8	15
CONSTANTA	5	4,17	11,0	0,01	50278	0,79	37895	0,79	5	8
COVASNA	1	0,83	4145,1	5,03	702790	11,04	529694	11,04	8	4
DAMBOVITA	2	1,67	242,0	0,29	7432	0,12	5602	0,12	7	11
DOLJ	2	1,67	9,8	0,01	1445	0,02	1089	0,02	7	16
GALATI										
GIURGIU										
GORJ	2	1,67	13,3	0,02	384	***	289	***	7	19
HARGHITA										
HUNEDOARA										
IALOMITA										
IASI										
MARAMURES	1	0,83	0,7	***	1010	0,02	761	0,02	8	17
MEHEDINTI										
MURES										
NEAMT	1	0,83	2,0	***	230	***	173	***	8	21
OLT										
PRAHOVA	3	2,50	102,1	0,12	3237	0,05	2440	0,05	6	13
SALAJ										
SATU MARE	2	1,67	3,9	***	184	***	139	***	7	22
SIBIU	2	1,67	201,0	0,24	6044	0,09	4555	0,09	7	12
SUCEAVA	1	0,83	3,3	***	16675	0,26	12568	0,26	8	10
TELEORMAN										
TIMIS	11	9,17	27143,4	32,96	1068411	16,79	805263	16,79	3	2
TULCEA	1	0,83	2717,7	3,30	91657	1,44	69082	1,44	8	6
VASLUI										
VALCEA	1	0,83	2,0	***	60	***	45	***	8	23
VRANCEA										
MUN. BUCURESTI	42	35,00	13003,0	15,79	3213968	50,50	2422374	50,50	1	1
ILFOV	2	1,67	22,0	0,03	725	0,01	546	0,01	7	18

*) number of companies (column 1)

**) capital in equivalent currency (column3)

*** Less than 0.01%

Note: Empty rows reveal that there are no operation in the current month

Table no. 8

**Changes by cession in the issued capital
of the companies by foreign direct investment,
during November 2004**

balance account at 30 April 2004	Number of companies		Amount of subscribed capital						Ranking by:	
			Total in local currency		Total in equivalent of currency		Total in equivalent of currency			
	No.	%	million ROL	%	USD	%	EURO	%		
0	1		2		3		4		5	
Total ROMANIA	544	100,0	267379,4	100,0	13796052	100,0	10398110	100,0	*	**
ALBA	5	0,9	218,9	0,08	16589	0,12	12503	0,12	11	16
ARAD	25	4,6	1503,7	0,56	135691	0,98	102271	0,98	4	7
ARGES	9	1,7	416,8	0,16	43852,0	0,32	33051,3	0,32	8	13
BACAU	6	1,1	3321,9	1,24	99254	0,72	74808	0,72	10	10
at 31 December 2003	25	4,6	34377,5	12,86	752824	5,46	567405	5,46	4	39
BISTRITA-NASAUD	2	0,4	1,9 ***		108 ***		81 ***		14	28
BOTOSANI										
BRASOV	14	2,6	121,8	0,05	8503	0,06	6409	0,06	6	21
BRAILA	3	0,6	135,7	0,05	4036	0,03	3042	0,03	13	23
BUZAU	5	0,9	89,4	0,03	2663	0,02	2007	0,02	11	35
CARAS-SEVERIN	8	1,5	83378,0	31,18	2684326	19,46	2023182	19,46	9	4
CALARASI	3	0,6	103,3	0,04	3165	0,02	2385	0,02	13	25
CLUJ	14	2,6	648,7	0,24	32298	0,23	24343	0,23	6	14
CONSTANTA	16	2,9	7601,4	2,84	753107	5,46	567618	5,46	5	5
COVASNA	2	0,4	32,4	0,01	9000	0,07	6783	0,07	14	38
DAMBOVITA	6	1,1	63,3	0,02	6791	0,05	5118	0,05	10	22
DOLJ	5	0,9	6,6 ***		5588	0,04	4212	0,04	11	36
GALATI	5	0,9	15190,7	5,68	463099	3,36	349039	3,36	11	6
GIURGIU	5	0,9	98,3	0,04	12587	0,09	9487	0,09	11	18
GORJ	1	0,2	0,1 ***		9 ***		7 ***		15	32
HARGHITA	4	0,7	5,6 ***		185 ***		139 ***		12	26
HUNEDOARA	5	0,9	279,0	0,10	15100	0,11	11381	0,11	11	17
IALOMITA										
IASI	10	1,8	179,1	0,07	11307	0,08	8522	0,08	7	19
MARAMURES	5	0,9	1268,6	0,47	102930	0,75	77579	0,75	11	8
MEHEDINTI	2	0,4	0,8 ***		24 ***		18 ***		14	31
MURES	6	1,1	142,9	0,05	25364	0,18	19117	0,18	10	15
NEAMT	2	0,4	5,5 ***		182 ***		137 ***		14	27
OLT										
PRAHOVA	9	1,7	20,3	0,01	8713	0,06	6567	0,06	8	37
SALAJ	1	0,2	1,2 ***		34 ***		26 ***		15	30
SATU MARE	4	0,7	625,5	0,23	63208	0,46	47640	0,46	12	12
SIBIU	14	2,6	1531,3	0,57	66006	0,48	49749	0,48	6	11
SUCEAVA	1	0,2	6,1 ***		3412	0,02	2572	0,02	15	24
TELEORMAN										
TIMIS	51	9,4	1179,9	0,44	99499	0,72	74993	0,72	2	9
TULCEA	3	0,6	2,5 ***		89 ***		67 ***		13	29
VASLUI	1	0,2	5,7	0,00	600	0,00	452	0,00	15	34
VALCEA	5	0,9	31268,6	11,69	3018642	21,88	2275156	21,88	11	3
VRANCEA	1	0,2	351,7	0,13	10565	0,08	7963	0,08	15	20
MUN. BUCURESTI	226	41,5	74172,3	27,74	3482413	25,24	2624701	25,24	1	1
ILFOV	35	6,4	78073,1	29,20	3413065	24,74	2572433	24,74	3	2

*) number of companies (column 1)

**) capital in equivalent currency (column 3)

*** Less than 0,01%

Note: Empty rows reveal that there are no operation in the current month

Table no. 9

**Incorporation of companies by foreign direct investment,
according to the development regions,
during November 2004**

Development regions	Number of companies		Amount of subscribed capital						Ranking by:	
			Total in local currency		Total in equivalent of currency		Total in equivalent of currency			
	No.	%	million ROL	%	USD	%	EURO	%		
0	1		2		3		4		5	
Total ROMANIA	1056	100,0	3149663,0	100,0	105174519	100,0	79270232	100,0	*	**
NORTH-EAST	38	3,6	1187,1	0,0	38784	0,0	29232	0,0	7	6
SOUTH-EAST	55	5,2	1116,5	0,0	33451	0,0	25212	0,0	5	7
SOUTH-MUNTENIA	54	5,1	9969,9	0,3	298725	0,3	225150	0,3	6	5
SOUTH-WEST OLTENIA	27	2,6	131,6	***	4187	***	3156	***	8	8
WEST	163	15,4	96892,6	3,1	3157806	3,0	2380044	3,0	2	2
at 31 December 2003	135	12,8	22320,0	0,7	679208	0,6	511920	0,6	3	3
CENTER	115	10,9	17518,5	0,6	539028	0,5	406266	0,5	4	4
BUCHAREST-ILFOV	469	44,4	3000526,9	95,3	100423330	95,5	75689252	95,5	1	1

Table no. 10

**Statutory increase in the issued capital of companies by
foreign direct investment, according to the development regions,
during November 2004**

Development regions	Number of companies		Amount of subscribed capital						Ranking by:	
			Total in local currency		Total in equivalent of currency		Total in equivalent of currency			
	No.	%	million ROL	%	USD	%	EURO	%		
0	1		2		3		4		5	
Total ROMANIA	826	100,0	4233586,7	100,0	110389921	100,0	83201091	100,0	*	**
NORTH-EAST	37	4,5	16543,3	0,4	504313	0,5	380102	0,5	7	8
SOUTH-EAST	53	6,4	54674,4	1,3	1830844	1,7	1379911	1,7	5	7
SOUTH-MUNTENIA	52	6,3	121715,4	2,9	2093597	1,9	1577948	1,9	6	6
SOUTH-WEST OLTENIA	23	2,8	103519,5	2,4	2932057	2,7	2209897	2,7	8	5
WEST	107	13,0	501520,6	11,8	15751025	14,3	11871577	14,3	2	2
NORTH-WEST	68	8,2	117192,7	2,8	3662207	3,3	2760212	3,3	4	4
CENTER	75	9,1	423121,0	10,0	12871700	11,7	9701424	11,7	3	3
BUCHAREST-ILFOV	411	49,8	2895299,6	68,4	70744178	64,1	53320020	64,1	1	1

Table no. 11

**Strike-off of companies by foreign direct investment and the amount
of their issued capital, according to the development regions,
during November 2004**

Development regions	Number of companies		Amount of subscribed capital						Ranking by:	
			Total in local currency		Total in equivalent of currency		Total in equivalent of currency			
	No.	%	million ROL	%	USD	%	EURO	%		
0	1		2		3		4		5	
Total ROMANIA	120	100,0	82348,7	100,0	100,0	100,0	4796872	100,0	*	**
NORTH-EAST	27	22,5	145,0	0,2	127801	2,0	96324	2,0	2	5
SOUTH-EAST	6	5,0	2728,7	3,3	141935	2,2	106977	2,2	5	4
SOUTH-MUNTENIA	6	5,0	352,1	0,4	10910	0,2	8223	0,2	5	7
SOUTH-WEST OLTENIA	5	4,2	25,1	0,0	1889	0,0	1424	0,0	6	8
WEST	16	13,3	27504,1	33,4	1093621	17,2	824264	17,2	3	3
NORTH-WEST	10	8,3	99,2	0,1	54343	0,9	40958	0,9	4	6
CENTER	6	5,0	38469,5	46,7	1719224	27,0	1295782	27,0	5	2
BUCHAREST-ILFOV	44	36,7	13025,0	15,8	3214693	50,5	2422920	50,5	1	1

*) number of companies (column 1)

**) total issued capital, in equivalent of currency (column3)

*** Less than 0.01%

Table no. 12

**Incorporation of companies by foreign direct investment, by continents
according to the investors' country of origin,
during November 2004**

Continent	Number of companies		Amount of subscribed capital						Ranking by:	
			Total in local currency		Total in equivalent of currency		Total in equivalent of currency			
	No.	%	million ROL	%	USD	%	EURO	%		
0	1		2		3		4		5	
Total ROMANIA	1056	100,0	3149663,0	100,0	105174519	100,0	86010025	100,0	*	**
EUROPE	885	83,8	3107250,6	98,7	103893558	98,8	78304770	91,0	1	1
AFRICA	11	1,0	29,8	***	933	***	703	***	5	5
NORTH AMERICA	45	4,3	1652,9	0,1	50169	0,0	37812	0,0	3	3
SOUTH AMERICA	20	1,9	517,6	0,0	15913	0,0	11994	0,0	4	4
ASIA	145	13,7	40204,9	1,3	1213712	1,2	914777	1,1	2	2
at 31 December 2003	4	0,4	7,2	***	234	***	176	***	6	6

Table no. 13

**Increase in the issued capital of companies by foreign direct investment,
by continents according to the investors' country of origin,
during November 2004**

Continent	Number of companies		Amount of subscribed capital						Ranking by:	
			Total in local currency		Total in equivalent of currency		Total in equivalent of currency			
	No.	%	million ROL	%	USD	%	EURO	%		
0	1		2		3		4		5	
Total ROMANIA	826	100,0	4233586,7	100,0	110389921	100,0	90275096	100,0	*	**
EUROPE	616	74,6	3956992,1	93,5	100655411	91,2	75864172	84,0	1	1
AFRICA	19	2,3	6258,4	0,1	1244772	1,1	938187	1,0	4	4
NORTH AMERICA	25	3,0	53109,5	1,3	1598888	1,4	1205085	1,3	3	3
SOUTH AMERICA	8	1,0	944,4	0,0	31710	0,0	23900	0,0	5	5
ASIA	190	23,0	216282,3	5,1	6859140	6,2	5169747	5,7	2	2

Table no. 14

**Strike-off of companies by foreign direct investment and their issued capital,
by continents according to the investors' country of origin,
during November 2004**

Continent	Number of companies		Amount of subscribed capital						Ranking by:	
			Total in local currency		Total in equivalent of currency		Total in equivalent of currency			
	No.	%	million ROL	%	USD	%	EURO	%		
0	1		2		3		4		5	
Total ROMANIA	120	100,0	82348,7	100,0	6364416	100,0	5204717	100,0	*	**
EUROPE	91	75,8	41633,5	50,6		79,9	3830744	73,6	1	1
AFRICA	5	4,2	156,7	0,2	6004	0,1	4525	0,1	4	5
NORTH AMERICA	6	5,0	272,0	0,3	40833	0,6	30776	0,6	3	4
SOUTH AMERICA	4	3,3	34078,8	41,4	1000217	15,7	753865	14,5	5	2

*) number of companies (column 1)

**) total issued capital, in equivalent of currency (column3)

*** Sub 0,01%

Note: Empty rows reveal that there are no operation in the current month

Table no. 15

**Incorporation of companies by foreign direct investment, by economical groups
of countries according to the investors' country of origin,
during November 2004**

balance account at 30 April 2004

Economical groups	Number of companies		Amount of subscribed capital						Ranking by:	
			Total in local currency		Total in equivalent of currency		Total in equivalent of currency			
	No.	%	million ROL	%	USD	%	EURO	%		
0	1		2		3		4		5	
Total ROMANIA	1056		3149663,0		105174519		79270232		*	**
E.U.	650	61,6	3085213,0	98,0	103193474	98,1	77777115	98,1	2	2
E.A.F.T.A.	15	1,4	5118,6	0,2	165539	0,2	124767	0,2	4	4
O.E.C.D.	859	81,3	3102810,1	98,5	103755288	98,7	78200555	98,7	1	1
at 31 December 2003	84	8,0	8323,4	0,3	268511	0,3	202377	0,3	3	3

Table no. 16

**Increase in the issued capital of companies by foreign direct investment,
by economical groups of countries according to the investors' country of origin,
during November 2004**

Economical groups	Number of companies		Amount of subscribed capital						Ranking by:	
			Total in local currency		Total in equivalent of currency		Total in equivalent of currency			
	No.	%	million ROL	%	USD	%	EURO	%		
0	1		2		3		4		5	
Total ROMANIA	826		4233586,7		110389921		83201091		*	**
E.U.	383	46,4	3358984,6	79,3	81178643	73,5	61184495	73,5	2	2
E.A.F.T.A.	22	2,7	173186,4	4,1	5282961	4,8	3981778	4,8	4	4
O.E.C.D.	547	66,2	3781333,4	89,3	94332522	85,5	71098599	85,5	1	1
C.E.F.T.A.	46	5,6	279140,6	6,6	8605023	7,8	6485622	7,8	3	3

Table no. 17

**Strike-off of companies by foreign direct investment and their issued capital,
by economical groups of countries according to the investors' country of origin,
during November 2004**

Economical groups	Number of companies		Amount of subscribed capital						Ranking by:	
			Total in local currency		Total in equivalent of currency		Total in equivalent of currency			
	No.	%	million ROL	%	USD	%	EURO	%		
0	1		2		3		4		5	
Total ROMANIA	120		82348,7		6364416		4796872		*	**
E.U.	70	58,3	34534,3	41,9	4087407	64,2	3080686	64,2	2	2
E.A.F.T.A.	2	1,7	133,1	0,2	13018	0,2	9812	0,2	4	4
O.E.C.D.	91	75,8	75935,0	92,2	6062709	95,3	4569475	95,3	1	1
C.E.F.T.A.	3	2,5	4164,4	5,1	752903	11,8	567464	11,8	3	3

*) number of companies (column 1)

**) total issued capital, in equivalent of currency (column3)

*** Less than 0.01%

Note: Each economic group's weight is calculated related to the total Romania.

The weights' sum is different from 100% due to the fact that one country might be part of more than one economical group.

Table no. 18

**Classification* by countries of origin of investors
in companies by foreign direct investment,
incorporated during November 2004**

No. crt.	Countries	Number of companies		Amount of subscribed capital					
				Total in local currency		Total in equivalent of currency		Total in equivalent of currency	
		No.	%	million ROL	%	USD	%	EURO	%
0	1	2		3		4		5	
	Total ROMANIA, out of which:	1056	100,0	3149663,0	100,0	105174519	100,0	79270232	100,0
1	NETHERLAND	28	2,7	2912020,3	92,45	97683646	92,88	73624347	92,88
2	FRANCE	50	4,7	97413,9	3,09	3178275	3,02	2395472	3,02
3	CHINA	29	2,7	31973,4	1,02	966399	0,92	728377	0,92
4	AUSTRIA	37	3,5	24358,2	0,77	738799	0,70	556834	0,70
5	GERMANY	116	11,0	14533,3	0,46	447828	0,43	337529	0,43
6	ITALY	274	25,9	14350,1	0,46	435495	0,41	328233	0,41
7	HUNGARY	64	6,1	7809,4	0,25	252680	0,24	190445	0,24
8	BELGIUM	21	2,0	8612,1	0,27	251858	0,24	189826	0,24
9	GREECE	43	4,1	6181,2	0,20	190725	0,18	143750	0,18
10	CYPRUS	28	2,7	5674,2	0,18	175470	0,17	132252	0,17
11	SWITZERLAND	13	1,2	5076,1	0,16	164183	0,16	123745	0,16
12	SWEDEN	8	0,8	4294,4	0,14	128744	0,12	97035	0,12
13	VIETNAM	1	0,1	4156,3	0,13	125188	0,12	94354	0,12
14	TURKEY	58	5,5	2787,3	0,09	86297	0,08	65042	0,08
15	ISRAEL	56	5,3	2207,6	0,07	64996	0,06	48988	0,06
16	GREAT BRITAIN	24	2,3	997,5	0,03	60726	0,06	45769	0,06
17	U.S.A.	45	4,3	1652,9	0,05	50169	0,05	37812	0,05
18	DENMARK	9	0,9	948,0	0,03	30416	0,03	22925	0,03
19	LEBANON	16	1,5	905,7	0,03	27113	0,03	20435	0,03
20	LUXEMBOURG	5	0,5	638,0	0,02	20224	0,02	15243	0,02
21	UNITED ARAB EMIRATES	2	0,2	549,8	0,02	16914	0,02	12748	0,02
22	SPAIN	27	2,6	443,5	0,01	14005	0,01	10556	0,01
23	IRELAND	8	0,8	422,5	0,01	12733	0,01	9597	0,01
24	I.VIRGINE BRIT.	3	0,3	408,7	0,01	12513	0,01	9431	0,01
25	SLOVAKIA	4	0,4	252,9	***	7871	***	5932	***
26	IRAQ	7	0,7	173,0	***	5352	***	4034	***
27	SLOVENIA	3	0,3	127,0	***	3802	***	2866	***
28	JORDAN	5	0,5	110,5	***	3460	***	2608	***
29	CANADA	15	1,4	99,0	***	3097	***	2334	***
30	MOLDAVIA	36	3,4	90,1	***	2866	***	2160	***
31	CZECH REPUBLIC	3	0,3	78,7	***	2355	***	1775	***
32	A.R. OF SYRIA	14	1,3	63,6	***	2236	***	1685	***
33	POLAND	5	0,5	44,9	***	1469	***	1107	***
34	NORWAY	1	0,1	40,5	***	1294	***	975	***
35	INDIA	1	0,1	40,0	***	1274	***	960	***
36	UKRAINE	3	0,3	20,6	***	677	***	510	***
37	IRAN	9	0,9	18,3	***	568	***	428	***
38	SERBIA AND MONTENEGRO	6	0,6	17,7	***	550	***	415	***
39	EGYPT	3	0,3	16,2	***	502	***	378	***
40	BULGARIA	5	0,5	10,5	***	334	***	252	***
41	BRAZIL	2	0,2	9,9	***	303	***	228	***
42	AUSTRALIA	4	0,4	7,2	***	234	***	176	***
43	SUDAN	4	0,4	7,0	***	226	***	170	***
44	PAKISTAN	1	0,1	2,7	***	84	***	63	***
45	SAN MARINO	1	0,1	2,4	***	72	***	54	***
46	GUINEEA	1	0,1	2,0	***	64	***	48	***
47	LIECHTENSTEIN	1	0,1	2,0	***	62	***	47	***
48	TUNISIA	1	0,1	2,0	***	62	***	47	***
49	FORMER YUGOSLAVIE	1	0,1	1,9	***	57	***	43	***
50	SOUTH AFRICA	1	0,1	1,6	***	49	***	37	***

*) on countries selected upon the amount of the foreign direct investment, in equivalent of currency, ranking by a descending scale (col 4)

*** Less than 0.01%

Table no. 19

**Classification* by investors' countries of origin according to the amount
of the increase in the issued capital, during November 2004**

No. crt.	Countries	Number of companies		Amount of subscribed capital					
				Total in local currency		Total in equivalent of currency		Total in equivalent of currency	
		No.	%	million ROL	%	USD	%	EURO	%
0	1	2		3		4		5	
	Total ROMANIA	826	100,0	4233586,7	100,0	110389921	100,0	86585997	100,0
1	ITALY	162	19,61	1478621,8	34,93	42715830	38,70	33504805	38,70
2	GERMANY	74	8,96	645020,9	15,24	19800599	17,94	15530898	17,94
3	NETHERLAND	26	3,15	323176,0	7,63	10044612	9,10	7878643	9,10
4	HUNGARY	32	3,87	208530,7	4,93	6467887	5,86	5073185	5,86
5	CHINA	86	10,41	145479,4	3,44	4345307	3,94	3408307	3,94
6	LIECHTENSTEIN	3	0,36	117793,0	2,78	3553947	3,22	2787592	3,22
7	CYPRUS	32	3,87	58673,7	1,39	2791101	2,53	2189242	2,53
8	TURKEY	84	10,17	80323,3	1,90	2565285	2,32	2012120	2,32
9	SLOVENIA	2	0,24	66157,4	1,56	2001813	1,81	1570152	1,81
10	AUSTRIA	16	1,94	58970,9	1,39	1781730	1,61	1397527	1,61
11	SWITZERLAND	19	2,30	55393,4	1,31	1729014	1,57	1356178	1,57
12	LUXEMBOURG	4	0,48	54197,3	1,28	1715227	1,55	1345364	1,55
13	U.S.A.	25	3,03	53109,5	1,25	1598888	1,45	1254112	1,45
14	FRANCE	33	4,00	44983,4	1,06	1377347	1,25	1080343	1,25
15	GREECE	19	2,30	49730,9	1,17	1376192	1,25	1079437	1,25
16	BELGIUM	13	1,57	39224,4	0,93	1337310	1,21	1048939	1,21
17	ETHIOPIA	2	0,24	120,7	***	1051446	0,95	824718	0,95
18	GREAT BRITAIN	15	1,82	659776,1	15,58	993905	0,90	779584	0,90
19	JAPAN	1	0,12	24678,0	0,58	782526	0,71	613786	0,71
20	THAILANDA	1	0,12	16472,0	0,39	521956	0,47	409404	0,47
21	IRAQ	17	2,06	8319,7	0,20	446335	0,40	350090	0,40
22	IRAN	18	2,18	7450,8	0,18	254973	0,23	199992	0,23
23	LEBANON	9	1,09	4034,8	0,10	171534	0,16	134545	0,16
24	JORDAN	3	0,36	4653,0	0,11	152183	0,14	119367	0,14
25	A.R. OF SYRIA	17	2,06	3912,7	0,09	143233	0,13	112347	0,13
26	MOLDAVIA	33	4,00	3591,7	0,08	133160	0,12	104446	0,12
27	BULGARIA	9	1,09	3766,6	0,09	113934	0,10	89366	0,10
28	MALTA	1	0,12	2392,2	0,06	78262	0,07	61386	0,07
29	TUNISIA	1	0,12	2136,4	0,05	66633	0,06	52265	0,06
30	MAURITIUS	1	0,12	1910,7	0,05	61321	0,06	48098	0,06
31	SUDAN	6	0,73	1015,7	0,02	32350	0,03	25374	0,03
32	EGYPT	4	0,48	1044,6	0,02	32082	0,03	25164	0,03
33	COLOMBIA	1	0,12	872,8	0,02	29094	0,03	22820	0,03
34	PAKISTAN	5	0,61	883,0	0,02	28979	0,03	22730	0,03
35	SWEDEN	10	1,21	919,6	0,02	28191	0,03	22112	0,03
36	MONACO	1	0,12	407,0	***	12271	0,01	9625	0,01
37	SLOVAKIA	2	0,24	398,0	***	11964	0,01	9384	0,01
38	ISRAEL	25	3,03	362,2	***	11012	***	8637	***
39	CZECH REPUBLIC	1	0,12	288,0	***	9425	***	7393	***
40	SPAIN	11	1,33	4363,2	0,10	7700	***	6040	***
41	UKRAINE	5	0,61	253,2	***	7533	***	5909	***
42	BELIZE	1	0,12	20,0	***	1000	***	784	***
43	MACEDONIA	2	0,24	31,0	***	896	***	703	***
44	CANADA	2	0,24	26,0	***	854	***	670	***
45	COSTA RICA	1	0,12	21,9	***	643	***	504	***
46	LIBYA	1	0,12	18,0	***	551	***	432	***
47	INDIA	1	0,12	10,0	***	299	***	235	***
48	BANGLADESH	1	0,12	8,0	***	238	***	187	***
49	A.D.R OF YEMEN	3	0,36	7,0	***	215	***	169	***
50	BAHAMAS	1	0,12	6,2	***	195	***	153	***

*) on countries selected upon the amount of the foreign direct investment, in equivalent of currency, ranking by a descending scale (col 4)

*** Less than 0,01%

Table no. 20

**Classification of the top 40 companies by foreign direct investment
in the total subscribed capital, in equivalent of currency,
during November 2004**

No. crt.	Companies	County	Country of origin of the majority investor	Amount of subscribed capital		
				Total in local currency	Total in equivalent of currency	Total in equivalent of currency
				million ROL	thousand USD	thousand EURO
0	1	2	3	4	5	6
1	ROMPETROL FINANCIAL GROUP SRL	BUCURESTI	NETHERLAND	2911608,1	97662,4	73608,3
2	UNICREDIT ROMANIA SA	BUCURESTI	ITALY	1229310,0	36672,9	27640,4
3	C.S.R. SA	CARAS-SEVERIN	GERMANY	308607,8	9640,1	7265,7
4	REWE PROJEKTENTWICKLUNG ROMANIA SRL	BUCURESTI	GERMANY	213200,0	6364,2	4796,7
5	FINANSBANK (ROMANIA) SA	BUCURESTI	NETHERLAND	118659,3	3904,2	2942,6
6	GEDEON RICHTER ROMANIA SA	MURES	HUNGARY	106917,4	3347,6	2523,1
7	TUDORI PROPERTIES SRL	BUCURESTI	LIECHTENSTEIN	105550,0	3170,0	2389,2
8	SAFT POWER SYSTEMS SRL	TIMIS	FRANCE	91740,1	3000,6	2261,5
9	LEK PHARMATECH SRL	MURES	SLOVENIA	66096,8	2000,0	1507,4
10	RIP-EST SRL	TIMIS	NETHERLAND	61380,0	1847,6	1392,5
11	OLPO-ULEI SA	DOLJ	GERMANY	58564,6	1769,1	1333,4
12	DRUMSERV SA	MURES	HUNGARY	58150,0	1710,3	1289,1
13	BANEASA 6981 SRL	ILFOV	NETHERLAND	55499,0	1660,5	1251,5
14	C. BALAFAS ROMANIA SRL	BUCURESTI	CYPRUS	11922,5	1343,8	1012,8
15	SOL-PLUS ROMANIA SRL	TIMIS	JAPAN	41150,0	1304,5	983,2
16	TYROM SA	COVASNA	GREECE	41092,0	1281,6	966,0
17	SEVERNAV SA	MEHEDINTI	LUXEMBOURG	40484,7	1262,9	951,8
18	FIROC INVEST SRL	SATU MARE	FRANCE	41117,0	1261,5	950,8
19	SOMAREST SRL	SIBIU	ITALY	41192,0	1224,3	922,8
20	ROM-NOVOMATIC CORPORATION SRL	BUCURESTI	ETHIOPIA	35,0	1000,0	753,7
21	ROMPETROL LOGISTICS SA	BUCURESTI	NETHERLAND	33633,6	1000,0	753,7
22	FORIA - OBF ROMANIA SRL	SIBIU	AUSTRIA	30197,2	888,6	669,8
23	CREDISSON INTERNATIONAL SRL	BUCURESTI	CYPRUS	27427,0	855,4	644,7
24	VOLKSBANK ROMANIA SA	BUCURESTI	ITALY	25336,7	791,5	596,5
25	BANEASA INVESTMENTS SA	BUCURESTI	GREAT BRITAIN	26018,9	780,6	588,3
26	ORLANDI INVESTMENT SRL	TIMIS	ITALY	24797,4	761,1	573,6
27	DOMO RETAIL SA	COVASNA	U.S.A.	25000,0	752,5	567,2
28	DONASID SA	CALARASI	SWITZERLAND	22691,9	683,9	515,4
29	ARTECA JILAVA SA	ILFOV	SWITZERLAND	20549,0	612,8	461,9
30	ADA FABRICA DE MOBILA SRL	BIHOR	AUSTRIA	20000,0	606,1	456,8
31	PEMSTAR ROMANIA SRL	BRASOV	NETHERLAND	20119,1	603,6	454,9
32	PIR-POOL & IDROESSE ROMANIA SA	BUCURESTI	ITALY	20491,8	598,8	451,3
33	HEUVER BANDEN SRL	CLUJ	NETHERLAND	18441,0	555,1	418,4
34	DURA AUTOMOTIVE ROMANIA SRL	TIMIS	GERMANY	13863,5	456,1	343,8
35	AUTO WORLD PARK SRL	ARGES	GERMANY	13881,3	456,1	343,8
36	ZAPI CHEMICALS SRL	ILFOV	ITALY	13806,0	443,1	334,0
37	CEFIN LOGISTIC PARK BETA SRL	BUCURESTI	LUXEMBOURG	13219,0	437,4	329,7
38	MEGAPROFIL SRL	TIMIS	BELGIUM	14337,2	431,0	324,9
39	DENTAS ROMANIA SRL	BUCURESTI	TURKEY	14175,0	420,0	316,6
40	PRO-IMPEX CARACIONI SRL	ARAD	GERMANY	13630,2	406,0	306,0

Table no. 21

**Number of registered companies with foreign investment capital
and amount of subscribed capital,
between 1991 and 2003**

balance account at 30 April 2004	Number of companies		Amount of subscribed capital					
			Total on ROL		Total on currency		Total on currency	
	No.	%	millions ROL	%	thousands USD	%	thousands EURO	%
0	1	2	3	4	5	6	7	8
1991 - 2003, out of which:	97241	100,0	178025694,7	100,0	10561126,2	100,0	7959940,6	100,0
1991	5499	5,7	2581672,3	1,5	1058404,0	10,0	797721,0	10,0
1992	11766	12,1	651549,7	0,4	573360,3	5,4	432142,8	5,4
1993	10585	10,9	927682,4	0,5	417777,4	4,0	314879,6	4,0
1994	11053	11,4	2305248,3	1,3	881604,7	8,3	664467,1	8,3
1995	3400	3,5	678939,4	0,4	237718,5	2,3	179168,8	2,3
1996	3632	3,7	2293178,9	1,3	573675,0	5,4	432379,9	5,4
1997	5249	5,4	2322297,7	1,3	359926,1	3,4	271277,0	3,4
1998	8804	9,1	7276560,7	4,1	754539,0	7,1	568697,5	7,1
1999	7386	7,6	12240069,8	6,9	955183,7	9,0	719923,7	9,0
2000	8572	8,8	18714652,3	10,5	841152,2	8,0	633978,0	8,0
2001	7177	7,4	48206666,4	27,1	1541083,2	14,6	1161517,3	14,6
2002	7514	7,7	35417842,1	19,9	1078563,3	10,2	812915,2	10,2
2003	6604	6,8	44409334,9	24,9	1288139,0	12,2	970872,8	12,2

Note: column no. 1 representing number of new registered from that time. The amount of subscribed capital is composed by initial subscribed capital added with any increase of capital and decreased with the subscribed capital of erased companies

Diagram no. 9

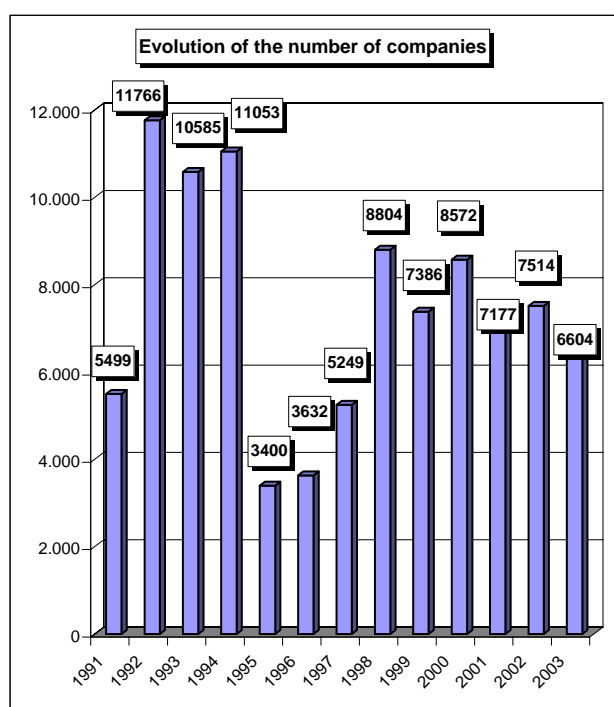


Diagram no. 10

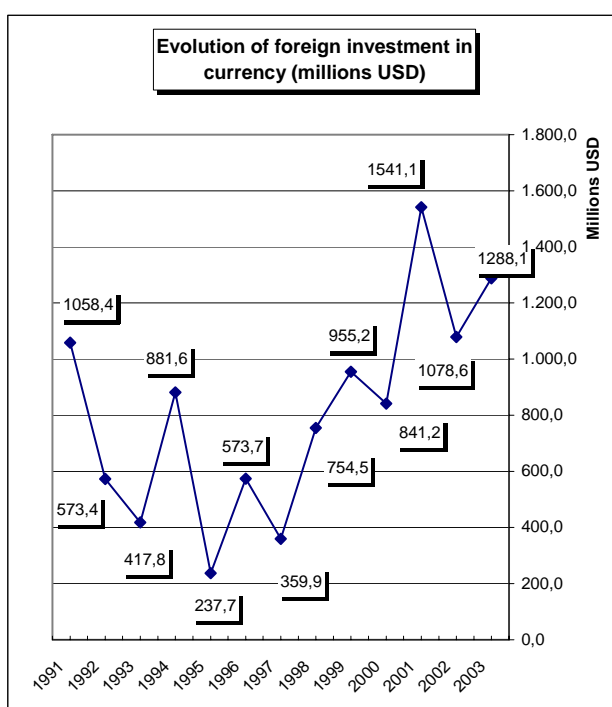


Table no. 22

**Number of registered companies, with foreign capital investment
and the value of the invested capital,
between 1991 and 2003**

balance account at 30 April 2004	Number of companies		Amount of subscribed capital						Order by:	
			Total on ROL		Total on currency		Total on currency			
	No.	%	millions ROL	%	thousands USD	%	thousands EURO	%		
0	1		2		3		4		5	
Total ROMANIA	97241	100,0	178025694,7	100,0	10561126,2	100,0	7959940,6	100,0	*	**
ALBA	849	0,9	1100213,6	0,6	88300,5	0,8	66552,3	0,8	18	19
ARAD	2571	2,6	2097034,9	1,2	142022,7	1,3	107042,8	1,3	5	12
ARGES	824	0,8	17747577,5	10,0	616080,4	5,8	464340,9	5,8	19	3
BACAU	731	0,8	3872561,9	2,2	111032,4	1,1	83685,3	1,1	22	16
BIHOR	2493	2,6	4321439,5	2,4	194089,1	1,8	146285,3	1,8	6	9
BISTRITA-NASAUD	597	0,6	210449,6	0,1	13782,6	0,1	10388,0	0,1	25	37
BOTOSANI	247	0,3	120241,0	0,1	6135,0	0,1	4624,0	0,1	37	41
BRASOV	2424	2,5	1790841,8	1,0	121711,0	1,2	91733,8	1,2	7	13
BRAILA	400	0,4	468050,3	0,3	32151,4	0,3	24232,6	0,3	29	31
BUZAU	455	0,5	633220,8	0,4	27667,4	0,3	20852,9	0,3	28	33
CARAS-SEVERIN	673	0,7	337508,5	0,2	47888,8	0,5	36093,9	0,5	23	26
CALARASI	259	0,3	1249158,7	0,7	44875,8	0,4	33823,0	0,4	36	28
CLUJ	3841	3,9	4674113,7	2,6	392469,5	3,7	295805,0	3,7	3	7
CONSTANTA	3413	3,5	13063235,9	7,3	493787,4	4,7	372168,5	4,7	4	5
COVASNA	521	0,5	378717,1	0,2	43873,0	0,4	33067,1	0,4	26	29
DAMBOVITA	467	0,5	4256053,7	2,4	153464,3	1,5	115666,3	1,5	27	11
DOLJ	1109	1,1	804582,5	0,5	194080,8	1,8	146279,0	1,8	15	10
GALATI	754	0,8	19808517,6	11,1	654176,3	6,2	493053,9	6,2	21	2
GIURGIU	267	0,3	266522,4	0,1	12237,3	0,1	9223,3	0,1	35	39
GORJ	238	0,2	22934,1	0,0	1907,8	0,0	1437,9	0,0	39	42
HARGHITA	1228	1,3	732822,3	0,4	47529,6	0,5	35823,2	0,5	13	27
HUNEDOARA	918	0,9	865259,6	0,5	68112,3	0,6	51336,4	0,6	17	22
IALOMITA	205	0,2	117230,6	0,1	11098,2	0,1	8364,7	0,1	40	40
IASI	1292	1,3	718560,1	0,4	75068,0	0,7	56578,9	0,7	12	20
MARAMURES	1220	1,3	2221420,0	1,2	91167,9	0,9	68713,4	0,9	14	18
MEHEDINTI	353	0,4	743159,3	0,4	28512,5	0,3	21489,9	0,3	31	32
MURES	1766	1,8	2576935,8	1,4	121568,6	1,2	91626,5	1,2	10	14
NEAMT	604	0,6	1840829,8	1,0	120692,6	1,1	90966,2	1,1	24	15
OLT	299	0,3	1982974,9	1,1	70308,6	0,7	52991,8	0,7	34	21
PRAHOVA	1551	1,6	5792563,7	3,3	387183,8	3,7	291821,2	3,7	11	8
SALAJ	322	0,3	305884,0	0,2	17249,2	0,2	13000,8	0,2	33	36
SATU MARE	981	1,0	1024552,2	0,6	66694,7	0,6	50267,9	0,6	16	23
SIBIU	1806	1,9	936269,8	0,5	94877,5	0,9	71509,4	0,9	9	17
SUCEAVA	812	0,8	780709,9	0,4	49086,6	0,5	36996,6	0,5	20	25
TELEORMAN	186	0,2	902030,2	0,5	42352,5	0,4	31921,2	0,4	41	30
TIMIS	5954	6,1	7045050,9	4,0	493305,4	4,7	371805,2	4,7	2	6
TULCEA	244	0,3	221396,6	0,1	12894,0	0,1	9718,2	0,1		38
VASLUI	183	0,2	532839,7	0,3	23169,1	0,2	17462,6	0,2	42	35
VALCEA	373	0,4	460943,9	0,3	50727,2	0,5	38233,2	0,5	30	24
VRANCEA	323	0,3	143582,0	0,1	27028,7	0,3	20371,5	0,3	32	34
MUN. BUCURESTI	51100	52,5	63057085,8	35,4	4685385,4	44,4	3531383,8	44,4	1	1
ILFOV	2388	2,5	7800618,3	4,4	585380,4	5,5	441202,3	5,5	8	4

*) number of companies

**) capital in equivalent currency

Table no. 23

**Number of registered companies, with foreign capital investment
and the value of the invested capital, on economic development areas,
between 1991 and 2003**

Economic development areas	Number of companies		Amount of subscribed capital						Order by:	
			Total on ROL		Total on currency		Total on currency			
	No.	%	millions ROL	%	thousands USD	%	thousands EURO	%		
0	1		2		3		4		5	
Total ROMANIA	97241	100,0	178025694,7	100,0	10561126,2	100,0	7959940,6	100,0	*	**
NORTH-EAST	3869	4,0	7865742,4	4,4	385183,6	3,6	290313,6	3,6	6	7
SOUTH-EAST	5589	5,7	34338003,2	19,3	1247705,1	11,8	940397,7	11,8	5	3
SOUTH-MUNTENIA	3759	3,9	30331136,8	17,0	1267292,2	12,0	955160,5	12,0	7	2
SOUTH-WEST OLTENIA	2372	2,4	4014594,7	2,3	345536,9	3,3	260431,8	3,3	8	8
WEST	10116	10,4	10344853,9	5,8	751329,3	7,1	566278,3	7,1	2	5
at 31 December 2003	9454	9,7	12757859,1	7,2	775453,0	7,3	584460,4	7,3	3	4
CENTER	8594	8,8	7515800,4	4,2	517860,3	4,9	390312,3	4,9	4	6
BUCHAREST-ILFOV	53488	55,0	70857704,2	39,8	5270765,8	49,9	3972586,1	49,9	1	1

Table no. 24

**Number of registered companies, with foreign capital investment
and the value of the invested capital, on continents
between 1991 and 2003**

Continent	Number of companies		Amount of subscribed capital						Order by:	
			Total on ROL		Total on currency		Total on currency			
	No.	%	millions ROL	%	thousands USD	%	thousands EURO	%		
0	1		2		3		4		5	
Total ROMANIA	97241	100,0	178025694,7	100,0	10561126,2	100,0	7959940,6	100,0	*	**
EUROPE	60454	62,2	139639143,0	78,4	8307097,0	78,7	6261074,6	78,7	1	1
AFRICA	2170	2,2	238780,2	0,1	33381,0	0,3	25159,3	0,3	4	6
NORTH AMERICA	3803	3,9	7147212,6	4,0	711850,2	6,7	536522,8	6,7	3	2
SOUTH AMERICA	1521	1,6	3996560,3	2,2	216287,3	2,0	163016,1	2,0	5	5
ASIA	32901	33,8	6885172,6	3,9	647184,5	6,1	487784,2	6,1	2	3
OCEANIA	469	0,5	20118283,1	11,3	645214,0	6,1	486299,0	6,1	6	4

Table no. 25

**Number of registered companies, with foreign capital investment
and the value of the invested capital, on economic groups,
between 1991 and 2003**

Economic groups	Number of companies		Amount of subscribed capital							
			Total on ROL		Total on currency		Total on currency			
	No.	%	millions ROL	%	thousands USD	%	thousands EURO	%		
0	1		2		3		4		5	
Total ROMANIA	97241		178025694,7		10561126,2		7959940,6		*	**
U.E.	40401	41,5	114227383,5	64,2	6411482,3	60,7	4832346,3	60,7	2	2
A.E.L.S.	1551	1,6	6754075,5	3,8	475863,9	4,5	358659,5	4,5	4	3
O.E.C.D.	60613	62,3	139215004,6	78,2	8612481,4	81,5	6491243,4	81,5	1	1
C.E.F.T.A.	5412	5,6	5426481,6	3,0	306594,3	2,9	231080,7	2,9	3	4

Note: Each economic group's weight is calculated in total Romania.

The weights sum is different from 100% because each country may be part of one or many economic groups

*) number of companies

**) capital in equivalent currency

*** Less than 0.01%

Diagram no. 11

**Percentage of companies with foreign investment,
between 1991 and 2003, on fields of activity***

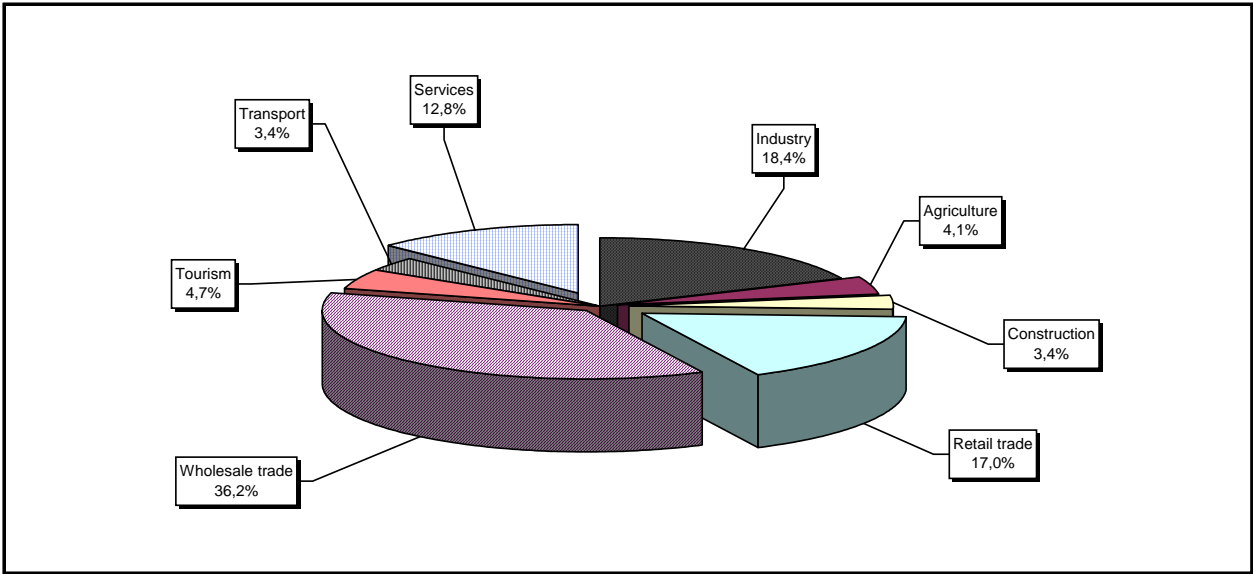
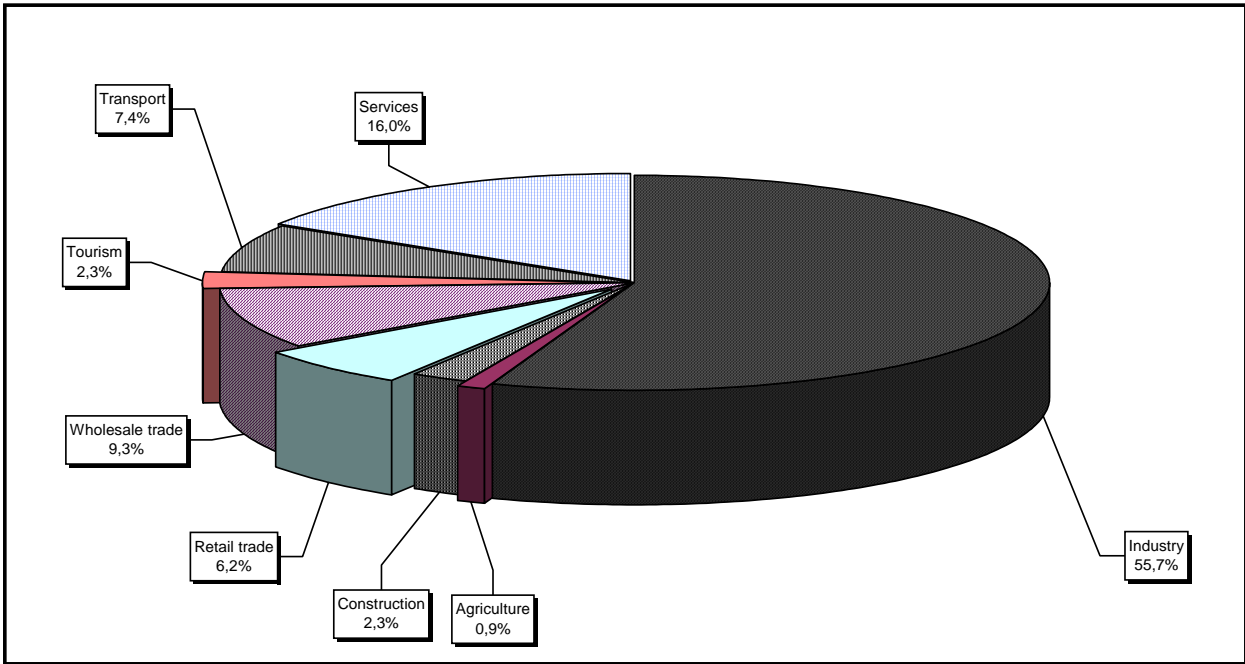


Diagram no. 12

Percentage of foreign currency invested capital in companies
with foreign investment, between 1991 and 2003, on fields of activity**



*) Calculated on main activity

**) Calculated on the total amount in currency

Table no. 26

**Countries classification on foreign
investment capital registered
between 1991 and December 2003**

No. crt.	Countries	Number of companies		Amount of subscribed capital					
				Total on ROL		Total on currency		Total on currency	
		No.	%	millions ROL	%	thousands USD	%	thousands EURO	%
0	1	2		3		4		5	
	Total ROMANIA, out of which:	97241	100,00	178025694,7	100,00	10561126,2	100,00	7959940,6	100,00
1	NETHERLAND	1749	1,80	34683700,7	19,48	1881720,3	17,82	1418256,1	17,82
2	FRANCE	3143	3,23	23055984,4	12,95	1067095,6	10,10	804271,9	10,10
3	GERMANY	10946	11,26	13344219,6	7,50	884606,8	8,38	666729,8	8,38
4	U.S.A.	3803	3,91	7147212,6	4,01	711850,2	6,74	536522,8	6,74
5	ITALY	14178	14,58	8114982,1	4,56	637791,1	6,04	480704,4	6,04
6	AUSTRIA	2775	2,85	13620779,3	7,65	612443,5	5,80	461599,8	5,80
7	ANTILELE OLANDEZE	9	***	19068759,7	10,71	598478,8	5,67	451074,6	5,67
8	CYPRUS	1155	1,19	7758908,9	4,36	504618,4	4,78	380331,8	4,78
9	TURKEY	8689	8,94	4203287,7	2,36	438989,4	4,16	330867,1	4,16
10	SWITZERLAND	1247	1,28	5828964,1	3,27	396528,6	3,75	298864,3	3,75
11	GREAT BRITAIN	1663	1,71	6353548,5	3,57	374700,5	3,55	282412,5	3,55
12	GREECE	2553	2,63	5321606,2	2,99	317191,8	3,00	239068,1	3,00
13	HUNGARY	4358	4,48	5034297,3	2,83	272476,9	2,58	205366,4	2,58
14	SOUTH KOREA	82	0,08	481704,4	0,27	218348,4	2,07	164569,6	2,07
15	LUXEMBOURG	223	0,23	3025695,7	1,70	200789,5	1,90	151335,4	1,90
16	SPAIN	628	0,65	956794,5	0,54	160508,8	1,52	120975,8	1,52
17	I.VIRGINE BRIT.	193	0,20	3269393,7	1,84	124044,6	1,17	93492,6	1,17
18	SWEDEN	773	0,79	2452952,9	1,38	107271,6	1,02	80850,8	1,02
19	CHINA	8223	8,46	2412790,2	1,36	105585,7	1,00	79580,1	1,00
20	WITH OUT CITIZENSHIP	21	0,02	7635,2	***	75690,3	0,72	57048,0	0,72
21	PORTUGAL	93	0,10	1844148,2	1,04	64088,3	0,61	48303,5	0,61
22	A.R. OF SYRIA	5235	5,38	563402,6	0,32	64005,1	0,61	48240,7	0,61
23	LIECHTENSTEIN	150	0,15	671538,2	0,38	59298,5	0,56	44693,4	0,56
24	CANADA	895	0,92	446838,1	0,25	59250,0	0,56	44656,8	0,56
25	BELGIUM	1161	1,19	745349,2	0,42	58938,6	0,56	44422,2	0,56
26	JAPAN	133	0,14	1372109,3	0,77	56314,2	0,53	42444,1	0,53
27	IRAQ	5807	5,97	562810,8	0,32	52198,8	0,49	39342,3	0,49
28	LEBANON	3302	3,40	527361,2	0,30	46408,3	0,44	34978,0	0,44
29	ISRAEL	2556	2,63	237666,6	0,13	28560,5	0,27	21526,1	0,27
30	MARSHALL ISLANDS	7	***	804183,8	0,45	25222,6	0,24	19010,3	0,24
31	GIBRALTAR	25	0,03	429517,8	0,24	24459,3	0,23	18435,0	0,23
32	IRELAND	200	0,21	232269,8	0,13	24070,2	0,23	18141,8	0,23
33	FORMER YUGOSLAVIE	730	0,75	89807,2	0,05	22693,1	0,21	17103,9	0,21
34	IRAN	2590	2,66	171645,7	0,10	20400,1	0,19	15375,6	0,19
35	DENMARK	262	0,27	437941,7	0,25	18294,8	0,17	13788,8	0,17
36	PANAMA	115	0,12	132734,8	0,07	17899,8	0,17	13491,1	0,17
37	JORDAN	3042	3,13	121681,6	0,07	15092,8	0,14	11375,5	0,14
38	MONACO	28	0,03	291216,6	0,16	14872,1	0,14	11209,1	0,14
39	MOLDAVIA	1603	1,65	137264,9	0,08	14644,8	0,14	11037,8	0,14
40	ICELAND	12	0,01	111156,0	0,06	14044,0	0,13	10585,0	0,13
41	KUWEIT	146	0,15	28024,2	0,02	12041,5	0,11	9075,7	0,11
42	EGYPT	1278	1,31	102151,5	0,06	10769,9	0,10	8117,3	0,10
43	BULGARIA	515	0,53	81884,4	0,05	10236,1	0,10	7714,9	0,10
44	CZECH REPUBLIC	207	0,21	68798,1	0,04	9717,6	0,09	7324,2	0,09
45	AUSTRALIA	400	0,41	36412,2	0,02	9386,4	0,09	7074,5	0,09
46	CAMEROON	12	0,01	31887,3	0,02	9045,5	0,09	6817,6	0,09
47	INS. VIRGINE AMR.	33	0,03	89609,8	0,05	7991,3	0,08	6023,1	0,08
48	POLAND	222	0,23	114098,0	0,06	7989,8	0,08	6021,9	0,08
49	CAYMAN ISLANDS	8	***	52718,3	0,03	6461,1	0,06	4869,8	0,06
50	THAILANDA	18	0,02	139498,4	0,08	6180,1	0,06	4658,0	0,06
51	NORWEY	142	0,15	142417,2	0,08	5992,8	0,06	4516,8	0,06
52	SLOVENIA	28	0,03	121475,2	0,07	5706,5	0,05	4301,0	0,05
53	LIBERIA	34	0,03	13797,9	***	5145,2	0,05	3878,0	0,05
54	PAKISTAN	657	0,68	64218,8	0,04	4612,2	0,04	3476,3	0,04

