



MINISTRY OF JUSTICE

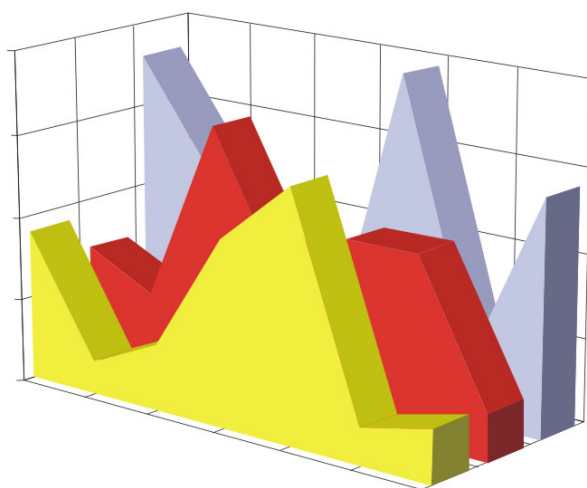
THE NATIONAL TRADE REGISTER OFFICE

Bucharest, 2, Octavian Goga Blvd., sector 3; Phone: +40 - 21 - 320.60.13; Fax: +40 - 21 - 320.58.29; Website: [www.onrc.ro](http://www.onrc.ro); E-mail: [onrc@onrc.ro](mailto:onrc@onrc.ro)

# COMPANIES BY FOREIGN DIRECT INVESTMENT

## STATISTICAL SYNTHESIS

**OF THE NATIONAL TRADE REGISTER'S DATA  
ON 31<sup>st</sup> OF MAY 2004 - PROVISORY DATA**



- No. 73 -

**MINISTRY OF JUSTICE  
THE NATIONAL TRADE REGISTER OFFICE**

---

- Operations such as incorporation of companies, changes in statutory documents and strike-off dissolution of companies are being regulated by Law No.26/1990 reissued, Law No.31/1990, reissued, OUG No.76/2001, reissued and Methodology Norms No. P/608/1998.
  
- This synthesis presents the trends on operations regarding companies by foreign direct investment registered in The Trade Register Office attached to the law court of Bucharest and in The Trade Register Offices attached to the law court in each county of Romania.
  
- Information provided by the Central Trade Register concern operations compulsory by law to be registered in the trade registers attached to the law courts.

*• No part of the content of this publication, in original or in any modified format, may be reproduced, stored in a retrieval system, or transmitted, in any form or by any means, without the prior permission in writing of  
The Ministry of Justice – The National Trade Register Office.*

*• The content of this publication may be referred to in articles, studies, books, as supporting or explanatory data under the condition only, the source of the information to be clearly and precisely specified.*

*Printed: May 2004*

# Table of Contents

	Page
<b>1 Explanatory Note</b>	<b>1</b>
<b>2.1 Tables and statistical graphics for May 2004</b>	<b>3</b>
Table No.1 – Number of companies by foreign direct investment and the amount of the subscribed capital, balance account at 31 <sup>st</sup> of May 2004	3
Diagram No. 1 – The structure of the number of companies	3
Diagram No. 2 – The structure of investment, in equivalent of currency	3
Table No.2 – Classification of companies by foreign direct investment by the investors' countries of origin, balance account at 31 <sup>st</sup> of May 2004	4
Diagram No. 3 – The structure upon sector of activity of companies by foreign direct investment, incorporated between 1991 and May 2004	5
Diagram No. 4 – The structure upon sector of activity in the amount of subscribed capital in companies by foreign direct investment, during 1991-May 2004	5
Table No. 3 – The number of companies by foreign direct investment and the amount of the subscribed capital, balance account at the end of each month of 2004	6
Diagram No. 5 – Trend in the number of companies' balance account	6
Diagram No. 6 – Trend of foreign investment balance account, in equivalent of currency	6
Table No. 4 – Comparative data on new companies by foreign direct investment and the subscribed capital, between January– May 2003 and 2004	7
Diagram No. 7 – Dynamics of the number of new companies by foreign direct investment, between January– May and 2004	7
Diagram No. 8 – Dynamics of the amount of foreign direct investment in new companies, between January– May 2003 and 2004	7
Table No. 5 – Incorporation of companies by foreign direct investment, during May 2004	8
Table No. 6 – Statutory increase of the issued capital, in companies by foreign direct investment during May 2004	9
Table No. 7 – Strike-off of companies by foreign direct investment, from the trade register, during May 2004	10
Table No. 8 – Changes by cession in the issued capital of the companies by foreign direct investment, during May 2004	11
Table No. 9 – Incorporation of companies by foreign direct investment, according to the development regions, during May 2004	12
Table No. 10 – Statutory increase in the issued capital of companies by foreign direct investment according to the development regions, during May 2004	12
Table No. 11 – Strike-off of companies by foreign direct investment and the amount of their issued capital, according to the development regions, during May 2004	12
Table No. 12 – Incorporation of companies by foreign direct investment, by continents according to the investors' country of origin, during May 2004	13
Table No. 13 – Increase in the issued capital of companies by foreign direct investment, by continents according to the investors' country of origin, during May 2004	13
Table No. 14 – Strike-off of companies by foreign direct investment and their issued capital, by continents according to the investors' country of origin, during May 2004	13
Table No. 15 – Incorporation of companies by foreign direct investment, by economical groups of countries according to the investors' country of origin, during May 2004	14
Table No. 16 – Increase in the issued capital of companies by foreign direct investment, by economical groups of countries according to the investors' country of origin, during May 2004	14
Table No. 17 – Strike-off of companies by foreign direct investment and their issued capital, by economical groups of countries according to the investors' country of origin, during May 2004	14

---

Table No. 18 – Classification by countries of origin of investors in companies by foreign direct investment, incorporated during May 2004	15
Table No. 19 – Classification by investors’ countries of origin according to the amount of the increase in the issued capital, during May 2004	16
Table No. 20 – Classification of the top 40 companies by foreign direct investment in the total subscribed capital, in equivalent of currency, during May 2004	17
<b>2.2 Cumulative data for 1991 – 2003</b>	<b>18</b>
Table No. 21 – Number of registered companies with foreign investment capital and amount of subscribed capital, between 1991 and 2003	18
Diagram No. 9 – Evolution of the number of companies	18
Diagram No. 10 – Evolution of foreign investment	18
Table No. 22 – Number of registered companies, with foreign capital investment and the value of the invested capital, between 1991 and 2003	19
Table No. 23 – Number of registered companies, with foreign capital investment and the value of the invested capital, on economic development areas, between 1991 and 2003	20
Table No. 24 – Number of registered companies, with foreign capital investment and the value of the invested capital, on continents between 1991 and 2003	20
Table No. 25 – Number of registered companies, with foreign capital investment and the value of the invested capital, on economic groups, between 1991 and 2003	20
Diagram No. 11 – Percentage of companies with foreign investment, between 1991 and 2003, on fields of activity	21
Diagram No. 12– Percentage of foreign currency invested capital in companies with foreign investment, between 1991 and 2003, on fields of activity	21
Table No. 26 – Countries classification on foreign investment capital registered between 1991 and December 2003	22

## Explanatory Note

- “**Company by foreign direct investment**” should be understood as any company partially or entirely set-up with the contribution in issued capital of physical or legal persons, resident or having the registered office outside Romania’s state frontiers.

- “**Foreign investor**” is any physical or legal person resident or having the business headquarter outside Romania’s borders, being associate/shareholder in a company registered in Romania.

- “**Social capital**” known as well as “issued capital” or “initial capital” is the total contribution in cash and assets subscribed by shareholders/associates while setting-up and registering a company or while increasing the initial capital during the company’s life.

The capital *subscribed* by a foreign investor should be, due to the Romanian legislation in force, in local currency ROL or/and in other convertible currency.

**The increase in capital** by changes in the statutory documents includes:

- foreign investors’ contributions from new own resources, in cash and/or assets, in ROL and/or currency;
- contributions of foreign investors from dividends obtained in Romania;
- getting in possession of equities/shares by a non-resident person from a resident one.

**The changes in capital by decrease/(increase) through cession** include:

- the contributions in capital of non-resident associates/shareholders yielded to/(received from) resident associates/shareholders, in ROL/currency;

- The **foreign direct investment in Romania ( Is )** equals to the total value of the direct foreign investment subscribed in the new registered company ( **I** ) *plus* the increase in issued capital through statutory documents( **M** ), *plus/minus* the cession of the issued capital *by/to* resident associates/shareholders ( **C** ), *minus* the subscribed capital in the companies being struck-off from the Trade Register ( **R** ), that is:

$$\mathbf{Is = I + M \pm C - R}$$

### Usual Terms:

- **incorporation** – represents the registration of the company in the trade registry awarding the quality of legal person.

- **other statutory documents** – represent the official registration of the changes occurred in a company’s life, such as: changes of the registered office address, increase or decrease of the issued capital, merger, liquidation, strike-off, etc.

- **strike-off** – represents the removal of a company from the trade registry, due to dissolution and liquidation, being also the very moment the company loses its quality of legal person. Data also include the companies under the provisions of Law No. 314/2001.

- **Operations** represent all the records in the trade registry including incorporations, other statutory documents and strike-off of companies by foreign direct investment, irrespective of the object of activity and the company’s type.

• **Terms used in tables and charts**

➤ **Number of companies:** depending on the specific table represents either the number of companies incorporated in the reference period, or the number of companies registering an increase of the issued capital, or the number of companies being struck-off from the trade registry.

➤ **Amount of the subscribed capital:**

- **total, in ROL:** the amount of the subscribed capital resulted from adding the amount subscribed in the local currency/ROL and the amount subscribed in foreign convertible currency being expressed in ROL, according to the exchange rate communicated by the National Bank of Romania at the date the deed was issued.

- **total, in equivalent of currency:**

**USD** : the amount of the resulted from adding and expressing in USD the convertible currency and the local currency (ROL), according to the exchange rate communicated by the National Bank of Romania at the date the deed was issued.

**Euro** : the balance account registered in the end of each month, calculated in equivalent of USD and expressed in Euro according to the exchange rate EUR/USD communicated by National Bank of Romania in the last working day of the due month.

➤ **Regional development:**

<i>North-East:</i>	Suceava, Botoşani, Neamţ, Iaşi, Bacău, Vaslui.
<i>South-East:</i>	Vrancea, Galaţi, Buzău, Brăila, Tulcea, Constanţa.
<i>South-Muntenia:</i>	Argeş, Dâmboviţa, Prahova, Teleorman, Giurgiu, Călăraşi, Ialomiţa.
<i>South-West Oltenia:</i>	Gorj, Vâlcea, Dolj, Mehedinţi, Olt.
<i>West:</i>	Arad, Caraş-Severin, Hunedoara, Timiş.
<i>North-West:</i>	Bihor, Bistriţa, Cluj, Satu Mare, Sălaj, Maramureş.
<i>Center:</i>	Alba, Braşov, Covasna, Harghita, Mureş, Sibiu.
<i>Bucharest-Ilfov:</i>	Bucureşti, Ilfov.

Source:

The integrated IT system of the trade registry is designed by The National Trade Registry Office according to the provisions of the related legislation in force. The source of information is the computerised system of the trade registers handled by the Trade Register Offices attached to the law courts.

Table no. 1

**Number of companies by foreign direct investment  
and the amount of the subscribed capital,  
balance account at 30 May 2004**

Balance account by end of period	Number of companies		Amount of subscribed capital					
			Total in ROL		Total in currency		Total in currency	
	No.	%	million ROL	%	thousand USD	%	thousand EURO	%
0	1		2		3		4	
29 February 2004, out of which	101139	103,9	196851276,9	110,5	11185113,9	107,2	9168406,7	107,4
at 31 December 2003	97388	100,0	178152827,0	100,0	10432104,9	100,0	8538543,4	100,0

*Note: column No. 1 shows the number of companies incorporated in the due period. The data concerning the amount of the subscribed capital include the records on the issued capital in companies incorporated in the related period plus the records of increase in capital and minus the subscribed capital in companies being struck-off from the trade register in the same period. The percentage inserted in column No. 1,2,3 and 4 shows the trend compared to the records of December 2003.*

Diagram no. 1

Diagram no. 2

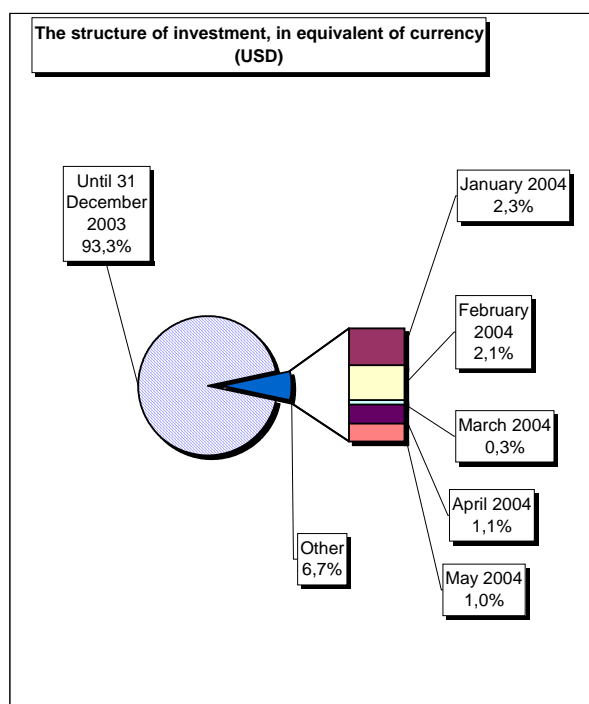
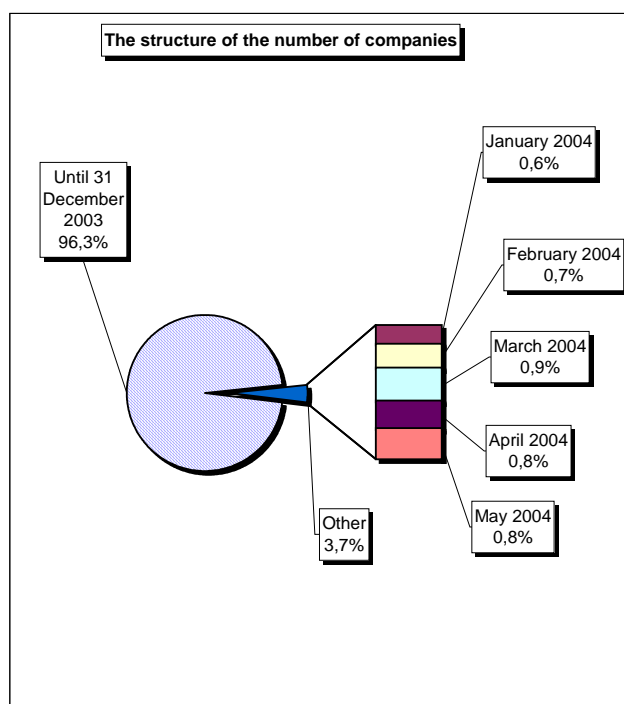


Table no. 2

**Classification\* of companies by foreign direct investment  
by the investors' countries of origin,  
balance account at 31 May 2004**

No. crt.	Countries	Companies by foreign investment		Amount of subscribed capital					
				Total in local currency		Total in equivalent of currency		Total in equivalent of currency	
		No.	%	million ROL	%	thousand USD	%	thousand EURO	%
0	1	2		3		4		5	
	<b>Total ROMANIA</b>	<b>101139</b>	<b>100,0</b>	<b>196851276,9</b>	<b>100,0</b>	<b>11185113,9</b>	<b>100,0</b>	<b>9168406,7</b>	<b>100,0</b>
1	NETHERLAND	1842	1,82	37316635,7	18,96	1939789,1	17,34	1587692,3	17,32
2	FRANCE	3344	3,31	27710709,9	14,08	1334720,0	11,93	1092451,1	11,92
3	GERMANY	11408	11,28	15350711,6	7,80	946699,3	8,46	774861,2	8,45
4	U.S.A.	3956	3,91	8487805,0	4,31	828707,9	7,41	678286,7	7,40
5	ITALY	15302	15,13	9296055,0	4,72	671097,7	6,00	549284,8	5,99
6	ANTILELE OLANDEZE	9	***	20136299,2	10,23	629972,2	5,63	515624,1	5,62
7	AUSTRIA	2967	2,93	14309893,9	7,27	618600,4	5,53	506316,4	5,52
8	CYPRUS	1220	1,21	8127536,9	4,13	517912,1	4,63	423904,4	4,62
9	TURKEY	8896	8,80	4459564,8	2,27	446306,7	3,99	365296,3	3,98
10	GREAT BRITAIN	1757	1,74	7974768,8	4,05	424081,4	3,79	347105,1	3,79
11	GREECE	2695	2,66	5558453,1	2,82	321283,0	2,87	262966,0	2,87
12	SWITZERLAND	1307	1,29	5946184,4	3,02	296632,2	2,65	242789,6	2,65
13	HUNGARY	4629	4,58	5246733,6	2,67	271048,4	2,42	221849,6	2,42
14	SOUTH KOREA	83	0,08	481570,3	0,24	218325,2	1,95	178696,3	1,95
15	LUXEMBOURG	237	0,23	3134367,4	1,59	203312,9	1,82	166409,0	1,82
16	SPAIN	709	0,70	1147978,5	0,58	166223,7	1,49	136051,9	1,48
17	I.VIRGINE BRIT.	196	0,19	3527442,3	1,79	131404,7	1,17	107553,0	1,17
18	CHINA	8285	8,19	2724611,9	1,38	129959,8	1,16	106370,4	1,16
19	SWEDEN	800	0,79	2575417,9	1,31	111633,0	1,00	91370,2	1,00
20	WITH OUT CITIZENSHIP	21	0,02	7635,2	***	75691,0	0,68	61952,1	0,68
21	JAPAN	146	0,14	1850468,0	0,94	70924,6	0,63	58050,9	0,63
22	BELGIUM	1228	1,21	845014,3	0,43	67357,1	0,60	55130,9	0,60
23	A.R. OF SYRIA	5321	5,26	586144,2	0,30	65153,2	0,58	53327,0	0,58
24	LIECHTENSTEIN	152	0,15	793349,0	0,40	63330,3	0,57	51835,0	0,57
25	CANADA	956	0,95	487722,3	0,25	60404,5	0,54	49440,3	0,54
26	PORTUGAL	102	0,10	1744035,5	0,89	54257,0	0,49	44408,7	0,48
27	IRAQ	5793	5,73	595249,3	0,30	53797,7	0,48	44032,7	0,48
28	LEBANON	3357	3,32	592868,4	0,30	47292,6	0,42	38708,4	0,42
29	MARSHALL ISLANDS	7	***	964055,9	0,49	30116,9	0,27	24650,3	0,27
30	ISRAEL	2679	2,65	260026,4	0,13	29261,3	0,26	23950,0	0,26
31	GIBRALTAR	28	0,03	434150,8	0,22	24868,2	0,22	20354,3	0,22
32	FORMER YUGOSLAVIE	737	0,73	90842,4	0,05	22718,1	0,20	18594,5	0,20
33	IRAN	2614	2,58	214219,7	0,11	21902,3	0,20	17926,7	0,20
34	PANAMA	119	0,12	135390,2	0,07	17889,3	0,16	14642,1	0,16
35	DENMARK	274	0,27	422238,2	0,21	17794,3	0,16	14564,4	0,16
36	IRELAND	224	0,22	124067,8	0,06	16462,2	0,15	13474,1	0,15
37	JORDAN	3071	3,04	148000,7	0,08	15821,4	0,14	12949,6	0,14
38	ICELAND	12	0,01	123129,1	0,06	14402,4	0,13	11788,2	0,13
39	MOLDAVIA	1703	1,68	132340,4	0,07	13697,6	0,12	11211,3	0,12
40	KUWEIT	147	0,15	28063,2	0,01	12062,1	0,11	9872,7	0,11
41	EGYPT	1282	1,27	121068,7	0,06	11343,5	0,10	9284,5	0,10
42	NEW ZEELAND	9	***	352109,8	0,18	11071,7	0,10	9062,1	0,10
43	BULGARIA	534	0,53	88683,6	0,05	10419,1	0,09	8527,9	0,09
44	POLAND	229	0,23	190443,9	0,10	10308,3	0,09	8437,2	0,09
45	CZECH REPUBLIC	212	0,21	65872,1	0,03	9596,8	0,09	7854,9	0,09
46	AUSTRALIA	409	0,40	35912,7	0,02	9344,8	0,08	7648,6	0,08
47	CAMEROON	13	0,01	31918,4	0,02	9046,2	0,08	7404,2	0,08
48	INS. VIRGINE AMR.	34	0,03	88909,2	0,05	8396,2	0,08	6872,2	0,07
49	CAYMAN ISLANDS	8	***	52718,4	0,03	6461,2	0,06	5288,4	0,06
50	NORTH KOREA	20	0,02	205247,7	0,10	6235,1	0,06	5103,4	0,06

\*) includes countries selected upon the amount of the foreign direct investment, in equivalent of currency USD, ranking on a descending scale (col 4)

\*\*\* Less than 0,01%

Diagram no. 3

The structure upon sector of activity\* of companies by foreign direct investment, incorporated between 1991 and May 2004

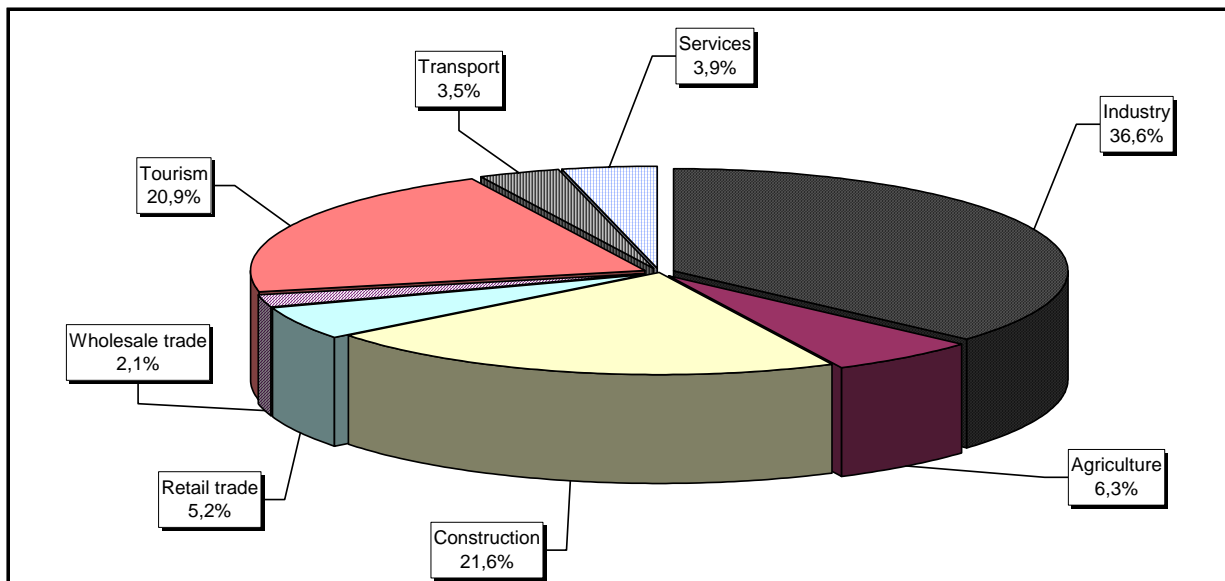


Diagram no. 4

The structure upon sector of activity in the amount of subscribed capital\*\* in companies by foreign direct investment, during 1991 - May 2004

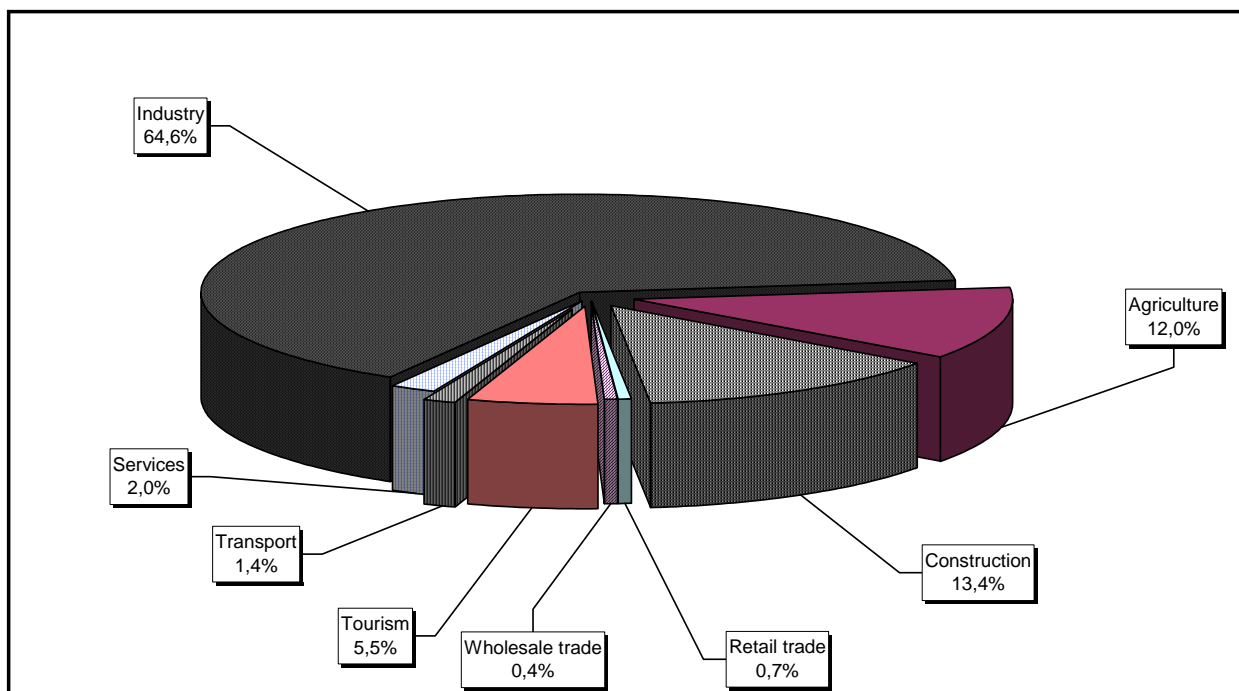


Table no. 3

**The number of companies by foreign direct investment  
and the amount of the subscribed capital,  
balance account in the end of each month of 2004**

balance account at 30 April 2004	Number of companies		Amount of subscribed capital					
			Total in local currency		Total in equivalent of currency		Total in equivalent of currency	
	No.	%	million ROL	%	thousand USD	%	thousand EURO	%
0	1		2		3		4	
DECEMBER 2003	97388	100,0	178152827,0	100,0	10432104,9	100,0	8538543,4	100,0
JANUARY 2004	97965	100,6	182397367,7	102,4	10690129,4	102,5	8749733,1	102,5
FEBRUARY 2004	98623	101,3	189026808,5	106,1	10920659,5	104,7	8938419,0	104,7
MARCH 2003	99542	102,2	188822132,6	106,0	10950603,5	105,0	8962927,8	105,0
APRIL 2003	100315	103,0	193120661,7	108,4	11078828,9	106,2	9067878,6	106,2
MAY 2003	101139	103,9	196851276,9	110,5	11185113,9	107,2	9154871,5	107,2

Diagram no. 5

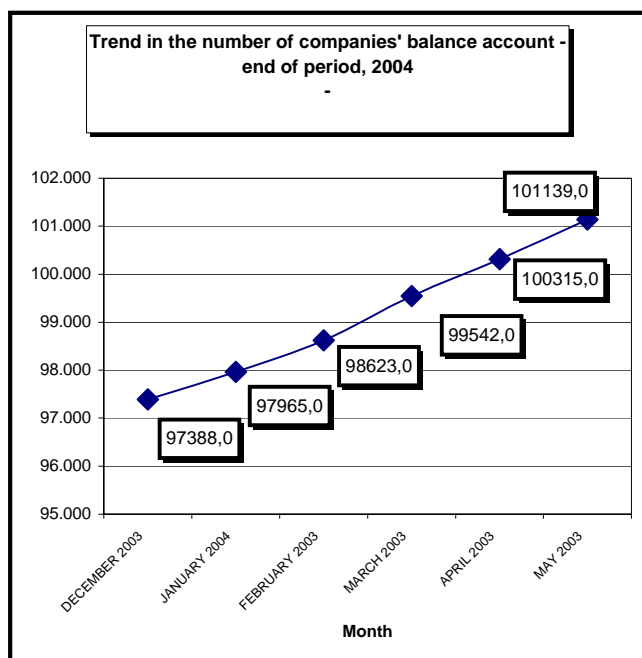


Diagram no. 6

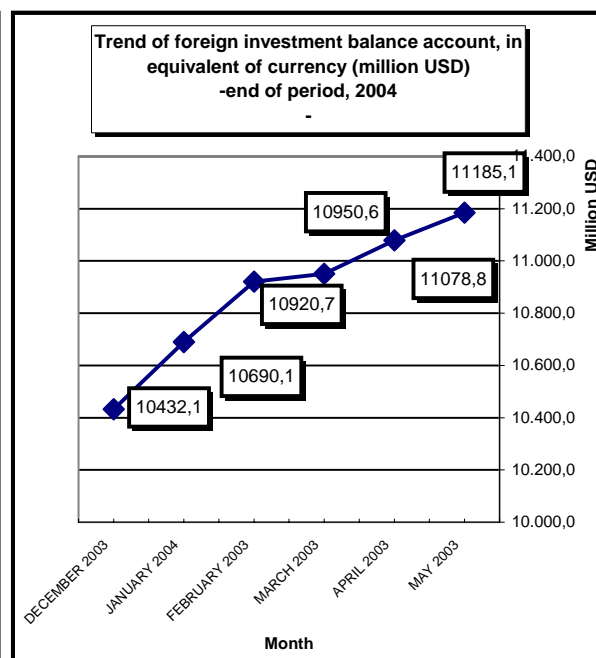


Table no. 4

Comparative data on new companies by foreign direct investment and the subscribed capital, between January - May 2003 and 2004

Month	2003				2004					
	New companies		Subscribed capital, in equivalent of currency		New companies		Trend related to 2003 (5/1)	Subscribed capital, in equivalent of currency		Trend related to 2003 (8/3)
	No.	%	thousand USD	%	No.	%	%	thousand USD	%	%
0	1	2	3	4	5	6	7	8	9	10
Jan-December out of which:	2702	100,0	32251,3	100,0	3751	100,0	138,8	49608,8	100,0	153,8
JANUARY	696	25,8	8923,5	27,7	577	15,4	82,9	3021,5	6,1	33,9
FEBRUARY	623	23,1	5828,7	18,1	658	17,5	105,6	11644,9	23,5	199,8
MARCH	501	18,5	5031,6	15,6	919	24,5	183,4	10503,7	21,2	208,8
APRIL	444	16,4	3259,2	10,1	773	20,6	174,1	18691,9	37,7	573,5
MAY	438	16,2	9208,3	28,6	824	22,0	188,1	5746,9	11,6	62,4

Diagram no. 7

Diagram no. 8

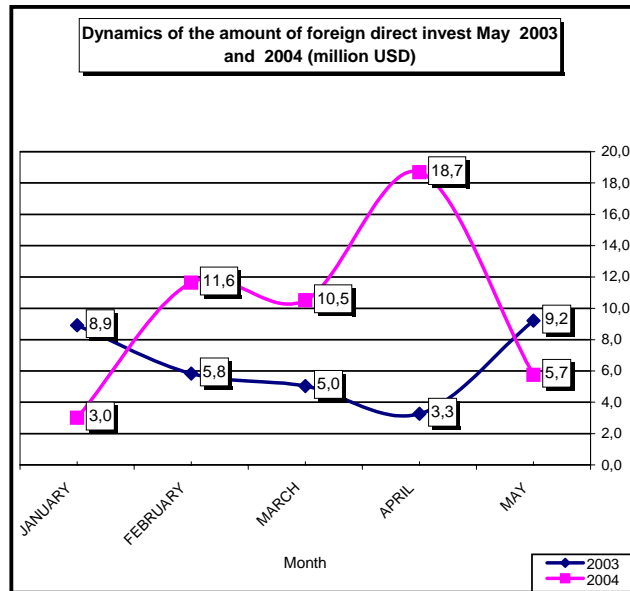
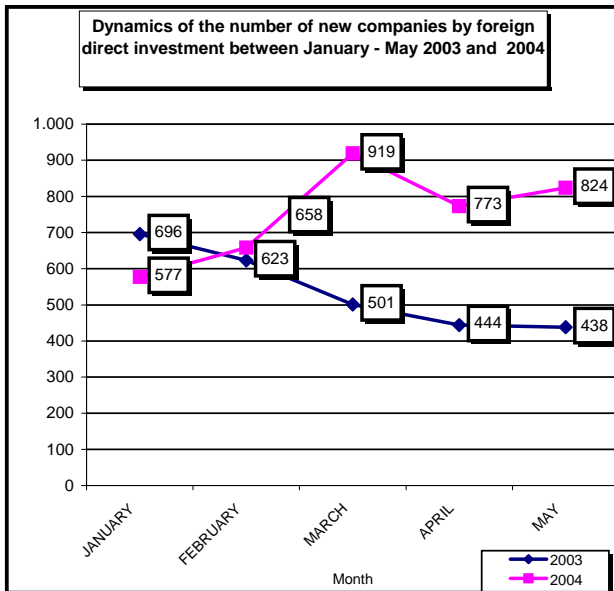


Table no. 5

**Incorporation of companies by foreign direct investment,  
during May 2004**

balance account at 30 April 2004	Number of companies		Amount of subscribed capital						Ranking by:	
			Total in local currency		Total in equivalent of currency		Total in equivalent of currency			
	No.	%	million ROL	%	USD	%	EURO	%		
0	1		2		3		4		5	
<b>Total ROMANIA</b>	<b>824</b>	<b>100,0</b>	<b>187648,9</b>	<b>100,0</b>	<b>5746860</b>	<b>100,0</b>	<b>4703731</b>	<b>100,0</b>	*	**
ALBA	9	1,09	19,0	0,01	561	***	459	***	15	30
ARAD	31	3,76	2609,8	1,39	78210	1,36	64014	1,36	5	8
ARGES	13	1,58	975,5	0,52	28631	0,50	23434	0,50	12	11
BACAU	7	0,85	11,5	***	348	***	285	***	17	36
at 31 December 2003	43	5,22	587,4	0,31	17395	0,30	14238	0,30	3	13
BISTRITA-NASAUD	9	1,09	314,1	0,17	9284	0,16	7599	0,16	15	16
BOTOSANI	4	0,49	112,1	0,06	3298	0,06	2699	0,06	20	23
BRASOV	31	3,76	34547,7	18,41	1013889	17,64	829855	17,64	5	3
BRAILA	3	0,36	42,9	0,02	1172	0,02	959	0,02	21	26
BUZAU	7	0,85	2218,4	1,18	65447	1,14	53568	1,14	17	9
CARAS-SEVERIN	3	0,36	37,6	0,02	1108	0,02	907	0,02	21	27
CALARASI	3	0,36	9,0	***	272	***	223	***	21	38
CLUJ	34	4,13	535,6	0,29	15751	0,27	12892	0,27	4	14
CONSTANTA	22	2,67	121,1	0,06	3704	0,06	3032	0,06	8	21
COVASNA	4	0,49	28,0	0,01	827	0,01	677	0,01	20	28
DAMBOVITA	3	0,36	4,6	***	137	***	112	***	21	40
DOLJ	9	1,09	228,6	0,12	6716	0,12	5497	0,12	15	18
GALATI	4	0,49	14,3	***	423	***	346	***	20	33
GIURGIU	8	0,97	2050,4	1,09	60270	1,05	49330	1,05	16	10
GORJ	2	0,24	3,9	***	115	***	94	***	22	41
HARGHITA	14	1,70	151,4	0,08	4496	0,08	3680	0,08	11	20
HUNEDOARA	18	2,18	123,4	0,07	3643	0,06	2982	0,06	9	22
IALOMITA	2	0,24	9,0	***	264	***	216	***	22	39
IASI	7	0,85	177,0	0,09	5267	0,09	4311	0,09	17	19
MARAMURES	9	1,09	70,7	0,04	1878	0,03	1537	0,03	15	24
MEHEDINTI	4	0,49	264,2	0,14	7912	0,14	6476	0,14	20	17
MURES	17	2,06	4391,4	2,34	131353	2,29	107511	2,29	10	6
NEAMT	4	0,49	10,0	***	294	***	241	***	20	37
OLT	1	0,12	1,9	***	58	***	47	***	23	42
PRAHOVA	28	3,40	54394,9	28,99	1662271	28,92	1360547	28,92	7	1
SALAJ	7	0,85	17,9	***	534	***	437	***	17	31
SATU MARE	11	1,33	448,5	0,24	13256	0,23	10850	0,23	13	15
SIBIU	30	3,64	655,7	0,35	19371	0,34	15855	0,34	6	12
SUCEAVA	5	0,61	14,1	***	415	***	340	***	19	34
TELEORMAN	4	0,49	13,8	***	407	***	333	***	20	35
TIMIS	81	9,83	3654,1	1,95	107873	1,88	88293	1,88	2	7
TULCEA	6	0,73	34167,6	18,21	1002273	17,44	820348	17,44	18	4
VASLUI	2	0,24	22,0	0,01	664	0,01	543	0,01	22	29
VALCEA	10	1,21	45,4	0,02	1344	0,02	1100	0,02	14	25
VRANCEA	4	0,49	17,7	***	523	***	428	***	20	32
MUN. BUCURESTI	293	35,56	43481,8	23,17	1289195	22,43	1055189	22,43	1	2
ILFOV	18	2,18	1045,0	0,56	186011	3,24	152248	3,24	9	5

<sup>\*)</sup> number of companies (column 1)

Table no. 6

**Statutory increase of the issued capital,  
in companies by foreign direct investment  
during May 2004**

balance account at 30 April 2004	Number of companies		Amount of subscribed capital						Ranking by:	
			Total in local currency		Total in equivalent of currency		Total in equivalent of currency			
	No.	%	million ROL	%	USD	%	EURO	%		
0	1		2		3		4		5	
<b>Total ROMANIA</b>	<b>799</b>	<b>100,00</b>	<b>3531556,7</b>	<b>100,00</b>	<b>112428993</b>	<b>100,00</b>	<b>92021681</b>	<b>100,00</b>	*	**
ALBA	9	1,13	1154,6	0,03	40252	0,04	32946	0,04	14	32
ARAD	23	2,88	938845,4	26,58	28686401	25,52	23479449	25,52	8	2
ARGES	5	0,63	8298,8	0,23	259509	0,23	212405	0,23	17	19
BACAU	4	0,50	744,2	0,02	21344	0,02	17470	0,02	18	33
at 31 December 2003	25	3,13	10023,9	0,28	319403	0,28	261427	0,28	7	17
BISTRITA-NASAUD	7	0,88	291686,9	8,26	8654569	7,70	7083653	7,70	15	4
BOTOSANI	3	0,38	2620,3	0,07	77065	0,07	63077	0,07	19	27
BRASOV	28	3,50	747634,5	21,17	21988130	19,56	17997001	19,56	5	3
BRAILA	5	0,63	10,1	***	321	***	263	***	17	38
BUZAU	10	1,25	86721,9	2,46	2717861	2,42	2224534	2,42	13	7
CARAS-SEVERIN	6	0,75	612,8	0,02	49904	0,04	40846	0,04	16	31
CALARASI	3	0,38	11994,7	0,34	357291	0,32	292438	0,32	19	15
CLUJ	33	4,13	23518,5	0,67	757392	0,67	619916	0,67	4	11
CONSTANTA	26	3,25	13848,4	0,39	867677	0,77	710182	0,77	6	9
COVASNA	1	0,13	1,0	***	30	***	25	***	21	41
DAMBOVITA	3	0,38	13,1	***	675	***	552	***	19	37
DOLJ	15	1,88	22938,5	0,65	699124	0,62	572224	0,62	9	12
GALATI	4	0,50	4045,7	0,11	127590	0,11	104431	0,11	18	24
GIURGIU	7	0,88	1867,7	0,05	53593	0,05	43865	0,05	15	30
GORJ	1	0,13	1,6	***	40	***	33	***	21	40
HARGHITA	9	1,13	15921,6	0,45	472545	0,42	386772	0,42	14	14
HUNEDOARA	14	1,75	4559,2	0,13	348286	0,31	285068	0,31	10	16
IALOMITA	2	0,25	5121,8	0,15	152024	0,14	124430	0,14	20	22
IASI	9	1,13	2802,8	0,08	82566	0,07	67579	0,07	14	25
MARAMURES	9	1,13	398,1	0,01	16337	0,01	13372	0,01	14	34
MEHEDINTI	3	0,38	8008,9	0,23	235412	0,21	192682	0,21	19	20
MURES	9	1,13	11815,4	0,33	494395	0,44	404656	0,44	14	13
NEAMT	11	1,38	2611,2	0,07	77974	0,07	63821	0,07	12	26
OLT	2	0,25	51,2	***	1505	***	1232	***	20	36
PRAHOVA	33	4,13	98919,5	2,80	3718377	3,31	3043444	3,31	4	5
SALAJ	1	0,13	2,0	***	59	***	48	***	21	39
SATU MARE	12	1,50	4473,2	0,13	133463	0,12	109238	0,12	11	23
SIBIU	4	0,50	27802,3	0,79	821153	0,73	672103	0,73	18	10
SUCEAVA	5	0,63	9476,1	0,27	278557	0,25	227995	0,25	17	18
TELEORMAN	2	0,25	2022,6	0,06	62696	0,06	51316	0,06	20	29
TIMIS	61	7,63	90310,9	2,56	3670182	3,26	3003997	3,26	2	6
TULCEA	5	0,63	2230,4	0,06	65991	0,06	54013	0,06	17	28
VASLUI	3	0,38	139,0	***	4112	***	3366	***	19	35
VALCEA	2	0,25	6281,3	0,18	183600	0,16	150274	0,16	20	21
VRANCEA	1	0,13	0,8	***	25	***	20	***	21	42
MUN. BUCURESTI	349	43,68	1012835,2	28,68	34392028	30,59	28149431	30,59	1	1
ILFOV	35	4,38	59190,9	1,68	1539535	1,37	1260090	1,37	3	8

<sup>\*)</sup> number of companies (column 1)

Table no. 7

**Strike-off of companies by foreign direct investment,  
from the trade register, during May 2004**

balance account at 30 April 2004	Number of companies		Amount of subscribed capital						Ranking by:	
			Total in local currency		Total in equivalent of currency		Total in equivalent of currency			
	No.	%	million ROL	%	USD	%	EURO	%		
0	1		2		3		4		5	
<b>Total ROMANIA</b>	<b>53</b>	<b>100,0</b>	<b>4895,7</b>	<b>100,0</b>	<b>486373</b>	<b>100,0</b>	<b>398090</b>	<b>100,0</b>	*	**
ALBA	1	1,89	40,0	0,82	1224	0,25	1002	0,25	5	12
ARAD										
ARGES										
BACAU										
at 31 December 2003	4	7,55	24,7	0,50	10335	2,12	8459	2,12	2	4
BISTRITA-NASAUD	1	1,89	2,0	0,04	110	0,02	90	0,02	5	18
BOTOSANI	3	5,66	2731,5	55,79	126523	26,01	103557	26,01	3	2
BRASOV										
BRAILA	1	1,89	2,0	0,04	61	0,01	50	0,01	5	21
BUZAU										
CARAS-SEVERIN										
CALARASI										
CLUJ	4	7,55	50,0	1,02	5339	1,10	4370	1,10	2	7
CONSTANTA	3	5,66	36,9	0,75	1386	0,28	1134	0,28	3	11
COVASNA	1	1,89	10,0	0,20	622	0,13	509	0,13	5	15
DAMBOVITA										
DOLJ	1	1,89	10,0	0,20	396	0,08	324	0,08	5	16
GALATI										
GIURGIU										
GORJ										
HARGHITA	1	1,89	6,3	0,13	396	0,08	324	0,08	5	16
HUNEDOARA										
IALOMITA	1	1,89	2,0	0,04	61	0,01	50	0,01	5	21
IASI	1	1,89	18,5	0,38	1000	0,21	818	0,21	5	13
MARAMURES	2	3,77	2,1	0,04	245	0,05	201	0,05	4	17
MEHEDINTI										
MURES	1	1,89	29,5	0,60	10000	2,06	8185	2,06	5	5
NEAMT										
OLT										
PRAHOVA	2	3,77	344,0	7,03	10466	2,15	8566	2,15	4	3
SALAJ	1	1,89	2,1	0,04	70	0,01	57	0,01	5	20
SATU MARE	1	1,89	19,0	0,39	892	0,18	730	0,18	5	14
SIBIU	3	5,66	55,3	1,13	4843	1,00	3964	1,00	3	8
SUCEAVA										
TELEORMAN	1	1,89	60,0	1,23	1726	0,35	1413	0,35	5	10
TIMIS	1	1,89	100,0	2,04	4606	0,95	3770	0,95	5	9
TULCEA										
VASLUI										
VALCEA	1	1,89	3,0	0,06	105	0,02	86	0,02	5	19
VRANCEA										
MUN. BUCURESTI	9	16,98	1117,9	22,83	296815	61,03	242939	61,03	1	1
ILFOV	9	16,98	229,1	4,68	9152	1,88	7491	1,88	1	6

\*) number of companies (column 1)

Table no. 8

**Changes by cession in the issued capital  
of the companies by foreign direct investment,  
during May 2004**

balance account at 30 April 2004	Number of companies		Amount of subscribed capital						Ranking by:	
			Total in local currency		Total in equivalent of currency		Total in equivalent of currency			
	No.	%	million ROL	%	USD	%	EURO	%		
0	1		2		3		4		5	
<b>Total ROMANIA</b>	<b>581</b>	<b>100,0</b>	<b>16305,3</b>	<b>100,0</b>	<b>11404469</b>	<b>100,0</b>	<b>9334411</b>	<b>100,0</b>	*	**
ALBA	6	1,0	457,6	2,81	20166	0,18	16506	0,18	13	16
ARAD	23	4,0	3066,4	18,81	127461	1,12	104325	1,12	6	8
ARGES	5	0,9	2282,1	14,00	87947,0	0,77	71983,5	0,77	14	9
BACAU	2	0,3	7,4	0,05	209	0,00	171	0,00	17	33
at 31 December 2003	18	3,1	520,7	3,19	50118	0,44	41021	0,44	9	13
BISTRITA-NASAUD										
BOTOSANI	1	0,2	137,8	0,84	4051	0,04	3316	0,04	18	21
BRASOV	21	3,6	24282,2	148,92	717240	6,29	587052	6,29	7	4
BRAILA	1	0,2	3,0	0,02	102 ***		83 ***		18	27
BUZAU	5	0,9	126,1	0,77	4146	0,04	3393	0,04	14	20
CARAS-SEVERIN	4	0,7	607,0	3,72	53932	0,47	44143	0,47	15	12
CALARASI	2	0,3	736,5	4,52	22084	0,19	18075	0,19	17	37
CLUJ	31	5,3	963432,3	5908,71	27270856	239,12	22320844	239,12	4	40
CONSTANTA	20	3,4	5591,1	34,29	532460	4,67	435812	4,67	8	5
COVASNA	3	0,5	77,1	0,47	2425	0,02	1985	0,02	16	22
DAMBOVITA										
DOLJ	7	1,2	520,8	3,19	18491	0,16	15135	0,16	12	17
GALATI	2	0,3	778,6	4,78	31600	0,28	25864	0,28	17	15
GIURGIU	4	0,7	57,0	0,35	1723	0,02	1410	0,02	15	23
GORJ	2	0,3	38,0	0,23	1327	0,01	1086	0,01	17	34
HARGHITA	2	0,3	88,0	0,54	5495	0,05	4498	0,05	17	19
HUNEDOARA	8	1,4	2488,3	15,26	294128	2,58	240740	2,58	11	6
IALOMITA	1	0,2	2,0	0,01	59	0,00	48	0,00	18	32
IASI	8	1,4	144,8	0,89	14898	0,13	12194	0,13	11	18
MARAMURES	5	0,9	305,4	1,87	67070	0,59	54896	0,59	14	11
MEHEDINTI	1	0,2	28,8	0,18	1525	0,01	1248	0,01	18	35
MURES	12	2,1	2268,4	13,91	233924	2,05	191464	2,05	10	7
NEAMT	8	1,4	15,5	0,10	1031 ***		844 ***		11	24
OLT	1	0,2	1,1	0,01	33 ***		27 ***		18	29
PRAHOVA	27	4,6	21880,7	134,19	1124725	9,86	920573	9,86	5	2
SALAJ	1	0,2	1,1	0,01	36 ***		29 ***		18	28
SATU MARE	7	1,2	279,2	1,71	36058	0,32	29513	0,32	12	14
SIBIU	4	0,7	467,2	2,87	13562	0,12	11100	0,12	15	36
SUCEAVA	2	0,3	10,0	0,06	701 ***		574 ***		17	25
TELEORMAN										
TIMIS	54	9,3	3615,8	22,18	809544	7,10	662601	7,10	2	3
TULCEA	1	0,2	2702,7	16,58	82285	0,72	67349	0,72	18	10
VASLUI	1	0,2	1,0	0,01	30 ***		25 ***		18	30
VALCEA	1	0,2	7,0	0,04	208 ***		170 ***		18	26
VRANCEA	4	0,7	2042,4	12,53	60417	0,53	49451	0,53	15	38
MUN. BUCURESTI	243	41,8	888828,2	5451,16	35787190	313,80	29291354	313,80	1	1
ILFOV	33	5,7	10695,4	65,59	1334710	11,70	1092443	11,70	3	39

\*) number of companies (column 1)

Table no. 9

**Incorporation of companies by foreign direct investment,  
according to the development regions,  
during May 2004**

Development regions	Number of companies		Amount of subscribed capital						Ranking by:	
			Total in local currency		Total in equivalent of currency		Total in equivalent of currency			
	No.	%	million ROL	%	USD	%	EURO	%		
0	1		2		3		4		5	
<b>Total ROMANIA</b>	<b>824</b>	<b>100,0</b>	<b>187648,9</b>	<b>100,0</b>	<b>5746860</b>	<b>100,0</b>	<b>4703731</b>	<b>100,0</b>	*	**
NORTH-EAST	29	3,5	346,7	0,2	10286	0,2	8419	0,2	7	8
SOUTH-EAST	46	5,6	36582,0	19,5	1073542	18,7	878680	18,7	6	4
SOUTH-MUNTENIA	61	7,4	57457,2	30,6	1752252	30,5	1434196	30,5	5	1
SOUTH-WEST OLTENIA	26	3,2	544,0	0,3	16145	0,3	13214	0,3	8	7
WEST	133	16,1	6425,0	3,4	190834	3,3	156195	3,3	2	5
at 31 December 2003	113	13,7	1974,2	1,1	58098	1,0	47552	1,0	3	6
CENTER	105	12,7	39793,1	21,2	1170497	20,4	958037	20,4	4	3
BUCHAREST-ILFOV	311	37,7	44526,8	23,7	1475206	25,7	1207437	25,7	1	2

Table no. 10

**Statutory increase in the issued capital of companies by  
foreign direct investment, according to the development regions,  
during May 2004**

Development regions	Number of companies		Amount of subscribed capital						Ranking by:	
			Total in local currency		Total in equivalent of currency		Total in equivalent of currency			
	No.	%	million ROL	%	USD	%	EURO	%		
0	1		2		3		4		5	
<b>Total ROMANIA</b>	<b>799</b>	<b>100,0</b>	<b>3531556,7</b>	<b>100,0</b>	<b>112428993</b>	<b>100,0</b>	<b>92021681</b>	<b>100,0</b>	*	**
NORTH-EAST	35	4,4	18393,6	0,5	541618	0,5	443307	0,5	7	8
SOUTH-EAST	51	6,4	106857,3	3,0	3779465	3,4	3093443	3,4	6	6
SOUTH-MUNTENIA	55	6,9	128238,1	3,6	4604165	4,1	3768450	4,1	5	5
SOUTH-WEST OLTENIA	23	2,9	37281,4	1,1	1119681	1,0	916444	1,0	8	7
WEST	104	13,0	1034328,3	29,3	32754773	29,1	26809359	29,1	2	2
NORTH-WEST	87	10,9	330102,5	9,3	9881223	8,8	8087654	8,8	3	4
CENTER	60	7,5	804329,3	22,8	23816505	21,2	19493502	21,2	4	3
BUCHAREST-ILFOV	384	48,1	1072026,1	30,4	35931563	32,0	29409521	32,0	1	1

Table no. 11

**Strike-off of companies by foreign direct investment and the amount  
of their issued capital, according to the development regions,  
during May 2004**

Development regions	Number of companies		Amount of subscribed capital						Ranking by:	
			Total in local currency		Total in equivalent of currency		Total in equivalent of currency			
	No.	%	million ROL	%	USD	%	EURO	%		
0	1		2		3		4		5	
<b>Total ROMANIA</b>	<b>53</b>	<b>100,0</b>	<b>4895,7</b>	<b>100,0</b>	<b>127523</b>	<b>100,0</b>	<b>398090</b>	<b>100,0</b>	*	**
NORTH-EAST	4	7,5	2749,9	56,2	127523	26,2	104376	26,2	4	2
SOUTH-EAST	4	7,5	38,9	0,8	1447	0,3	1184	0,3	4	7
SOUTH-MUNTENIA	4	7,5	406,0	8,3	12253	2,5	10029	2,5	4	5
SOUTH-WEST OLTENIA	2	3,8	13,0	0,3	501	0,1	410	0,1	5	8
WEST	1	1,9	100,0	2,0	4606	0,9	3770	0,9	6	6
NORTH-WEST	13	24,5	99,9	2,0	16991	3,5	13907	3,5	2	4
CENTER	7	13,2	141,0	2,9	17085	3,5	13984	3,5	3	3
BUCHAREST-ILFOV	18	34,0	1347,0	27,5	305967	62,9	250430	62,9	1	1

<sup>\*)</sup> number of companies (column 1)

Table no. 12

**Incorporation of companies by foreign direct investment, by continents  
according to the investors' country of origin,  
during May 2004**

Continent	Number of companies		Amount of subscribed capital						Ranking by:	
			Total in local currency		Total in equivalent of currency		Total in equivalent of currency			
	No.	%	million ROL	%	USD	%	EURO	%		
0	1		2		3		4		5	
<b>Total ROMANIA</b>	<b>824</b>	<b>100,0</b>	<b>187648,9</b>	<b>100,0</b>	<b>5746860</b>	<b>100,0</b>	<b>4699689</b>	<b>100,0</b>	*	**
EUROPE	692	84,0	138195,2	73,6	4290094	74,7	3511387	74,7	1	1
AFRICA	9	1,1	37,6	0,0	1127	0,0	922	0,0	4	5
NORTH AMERICA	41	5,0	34386,1	18,3	1009064	17,6	825906	17,6	3	2
SOUTH AMERICA	6	0,7	4215,6	2,2	125412	2,2	102648	2,2	5	4
ASIA	98	11,9	10808,1	5,8	320976	5,6	262715	5,6	2	3
at 31 December 2003	4	0,5	6,3	***	187	***	153	***	6	6

Table no. 13

**Increase in the issued capital of companies by foreign direct investment,  
by continents according to the investors' country of origin,  
during May 2003**

Continent	Number of companies		Amount of subscribed capital						Ranking by:	
			Total in local currency		Total in equivalent of currency		Total in equivalent of currency			
	No.	%	million ROL	%	USD	%	EURO	%		
0	1		2		3		4		5	
<b>Total ROMANIA</b>	<b>799</b>	<b>100,0</b>	<b>3531556,7</b>	<b>100,0</b>	<b>112428993</b>	<b>100,0</b>	<b>91942616</b>	<b>100,0</b>	*	**
EUROPE	557	69,7	2379454,9	67,4	77071276	68,6	63081846	68,6	1	1
AFRICA	20	2,5	9713,4	0,3	296319	0,3	242533	0,3	4	4
NORTH AMERICA	31	3,9	517693,3	14,7	15887375	14,1	13003612	14,1	3	3
SOUTH AMERICA	10	1,3	1137,5	0,0	34393	0,0	28150	0,0	5	5
ASIA	204	25,5	623551,3	17,7	19139429	17,0	15665376	17,0	2	2
OCEANIA	4	0,5	6,3	***	201	***	165	***	6	6

Table no. 14

**Strike-off of companies by foreign direct investment and their issued capital,  
by continents according to the investors' country of origin,  
during May 2004**

Continent	Number of companies		Amount of subscribed capital						Ranking by:	
			Total in local currency		Total in equivalent of currency		Total in equivalent of currency			
	No.	%	million ROL	%	USD	%	EURO	%		
0	1		2		3		4		5	
<b>Total ROMANIA</b>	<b>53</b>	<b>100,0</b>	<b>4895,7</b>	<b>100,0</b>	<b>486373</b>	<b>100,0</b>	<b>397748</b>	<b>100,0</b>	*	**
EUROPE	38	71,7	2829,3	57,8		30,0	119534	30,1	1	2
NORTH AMERICA	4	7,5	854,6	17,5	290283	59,7	237593	59,7	3	1
ASIA	13	24,5	1211,8	24,8	50047	10,3	40963	10,3	2	3

\*) number of companies (column 1)

Table no. 15

**Incorporation of companies by foreign direct investment, by economical groups  
of countries according to the investors' country of origin,  
during May 2004**

balance account at 30 April 2004

Economical groups	Number of companies		Amount of subscribed capital						Ranking by:	
			Total in local currency		Total in equivalent of currency		Total in equivalent of currency			
	No.	%	million ROL	%	USD	%	EURO	%		
<b>0</b>	<b>1</b>		<b>2</b>		<b>3</b>		<b>4</b>		<b>5</b>	
<b>Total ROMANIA</b>	<b>824</b>		<b>187648,9</b>		<b>5746860</b>		<b>4703731</b>		*	**
E.U.	541	65,7	125576,4	66,9	3917242	68,2	3206212	68,2	2	2
E.A.F.T.A.	9	1,1	208,6	0,1	6135	0,1	5021	0,1	4	4
O.E.C.D.	681	82,6	167417,6	89,2	5146852	89,6	4212632	89,6	1	1
at 31 December 2003	51	6,2	4284,4	2,3	126121	2,2	103228	2,2	3	3

Table no. 16

**Increase in the issued capital of companies by foreign direct investment,  
by economical groups of countries according to the investors' country of origin,  
during May 2004**

Economical groups	Number of companies		Amount of subscribed capital						Ranking by:	
			Total in local currency		Total in equivalent of currency		Total in equivalent of currency			
	No.	%	million ROL	%	USD	%	EURO	%		
<b>0</b>	<b>1</b>		<b>2</b>		<b>3</b>		<b>4</b>		<b>5</b>	
<b>Total ROMANIA</b>	<b>799</b>		<b>3531556,7</b>		<b>112428993</b>		<b>92021681</b>		*	**
E.U.	374	46,8	2193998,3	62,1	70798174	63,0	57947393	63,0	2	2
E.A.F.T.A.	18	2,3	27842,5	0,8	827984	0,7	677694	0,7	4	4
O.E.C.D.	539	67,5	3304770,9	93,6	105387848	93,7	86258595	93,7	1	1
C.E.F.T.A.	36	4,5	28091,6	0,8	994821	0,9	814248	0,9	3	3

Table no. 17

**Strike-off of companies by foreign direct investment and their issued capital,  
by economical groups of countries according to the investors' country of origin,  
during May 2004**

Economical groups	Number of companies		Amount of subscribed capital						Ranking by:	
			Total in local currency		Total in equivalent of currency		Total in equivalent of currency			
	No.	%	million ROL	%	USD	%	EURO	%		
<b>0</b>	<b>1</b>		<b>2</b>		<b>3</b>		<b>4</b>		<b>5</b>	
<b>Total ROMANIA</b>	<b>53</b>		<b>4895,7</b>		<b>486373</b>		<b>398090</b>		*	**
E.U.	28	52,8	2772,8	56,6	143952	29,6	117823	29,6	2	2
E.A.F.T.A.	2	3,8	4,0	0,1	122	0,0	100	0,0	4	3
O.E.C.D.	39	73,6	4226,8	86,3	464111	95,4	379869	95,4	1	1
C.E.F.T.A.	3	5,7	2,2	0,0	83	0,0	68	0,0	3	4

\*) number of companies (column 1)

Table no. 18

**Classification\* by countries of origin of investors  
in companies by foreign direct investment,  
incorporated during May 2004**

No. crt.	Countries	Number of companies		Amount of subscribed capital					
				Total in local currency		Total in equivalent of currency		Total in equivalent of currency	
		No.	%	million ROL	%	USD	%	EURO	%
0	1	2		3		4		5	
	<b>Total ROMANIA, out of which:</b>	<b>824</b>	<b>100,0</b>	<b>187648,9</b>	<b>100,0</b>	<b>5746860</b>	<b>100,0</b>	<b>4703731</b>	<b>100,0</b>
1	ITALY	229	27,8	65854,2	35,09	2157401	37,54	1765805	37,54
2	GREAT BRITAIN	28	3,4	34263,8	18,26	1005298	17,49	822823	17,49
3	CANADA	12	1,5	34114,1	18,18	1001071	17,42	819364	17,42
4	AUSTRIA	40	4,9	12580,0	6,70	370355	6,44	303131	6,44
5	CHINA	27	3,3	9852,5	5,25	292536	5,09	239437	5,09
6	GERMANY	114	13,8	4843,3	2,58	143171	2,49	117184	2,49
7	UKRAINE	4	0,5	4483,6	2,39	131873	2,29	107936	2,29
8	HUNGARY	45	5,5	4274,5	2,28	125820	2,19	102982	2,19
9	I.VIRGINE BRIT.	3	0,4	4206,0	2,24	125120	2,18	102409	2,18
10	SPAIN	17	2,1	3808,2	2,03	114666	2,00	93853	2,00
11	TURKEY	34	4,1	2954,3	1,57	88061	1,53	72077	1,53
12	FRANCE	36	4,4	1644,5	0,88	48459	0,84	39663	0,84
13	NETHERLAND	23	2,8	1237,8	0,66	37775	0,66	30918	0,66
14	GREECE	30	3,6	692,2	0,37	20661	0,36	16911	0,36
15	BELGIUM	12	1,5	529,8	0,28	15749	0,27	12890	0,27
16	A.R. OF SYRIA	15	1,8	477,3	0,25	14321	0,25	11722	0,25
17	CROATIA	1	0,1	360,0	0,19	10793	0,19	8834	0,19
18	U.S.A.	29	3,5	272,1	0,14	7993	0,14	6542	0,14
19	CYPRUS	25	3,0	250,1	0,13	7539	0,13	6171	0,13
20	SWITZERLAND	9	1,1	208,6	0,11	6135	0,11	5021	0,11
21	JORDAN	4	0,5	177,8	0,09	5203	0,09	4259	0,09
22	ISRAEL	16	1,9	125,9	0,07	3767	0,07	3083	0,07
23	LUXEMBOURG	4	0,5	89,1	0,05	2712	0,05	2220	0,05
24	LEBANON	11	1,3	71,6	0,04	2105	0,04	1723	0,04
25	IRAQ	4	0,5	55,0	0,03	1624	0,03	1329	0,03
26	MOLDAVIA	19	2,3	42,1	0,02	1247	0,02	1021	0,02
27	EGYPT	5	0,6	26,0	0,01	782	0,01	640	0,01
28	PORTUGAL	3	0,4	22,6	0,01	674	0,01	552	0,01
29	PAKISTAN	3	0,4	19,5	0,01	573	***	469	***
30	LATVIA	1	0,1	16,2	***	500	***	409	***
31	BOSNIA HERZEGOVINA	1	0,1	10,0	***	300	***	246	***
32	PANAMA	1	0,1	8,3	***	250	***	205	***
33	INDIA	5	0,6	7,5	***	222	***	182	***
34	IRELAND	2	0,2	7,1	***	208	***	170	***
35	JAPAN	4	0,5	6,9	***	208	***	170	***
36	AUSTRALIA	4	0,5	6,3	***	187	***	153	***
37	IRAN	4	0,5	6,0	***	178	***	146	***
38	BULGARIA	3	0,4	5,0	***	150	***	123	***
39	POLAND	2	0,2	4,0	***	123	***	101	***
40	ALBANIA	2	0,2	4,0	***	122	***	100	***
41	SOUTH AFRICA	1	0,1	4,0	***	119	***	97	***
42	FORMER YUGOSLAVIE	2	0,2	4,0	***	115	***	94	***
43	LIBERIA	1	0,1	3,6	***	108	***	88	***
44	SINGAPORE	1	0,1	2,5	***	73	***	60	***
45	LIBYA	1	0,1	2,0	***	59	***	48	***
46	QUATAR	1	0,1	2,0	***	59	***	48	***
47	SAUDI ARABIA	1	0,1	2,0	***	59	***	48	***
48	SUDAN	1	0,1	2,0	***	59	***	48	***
49	DENMARK	2	0,2	2,0	***	58	***	47	***
50	SWEDEN	1	0,1	1,8	***	55	***	45	***

\*) on countries selected upon the amount of the foreign direct investment, in equivalent of currency, ranking by a descending scale (col 4)

\*\*\* Less than 0.01%

Table no. 19

**Classification\* by investors' countries of origin according to the amount  
of the increase in the issued capital, during May 2004**

No. crt.	Countries	Number of companies		Amount of subscribed capital					
				Total in local currency		Total in equivalent of currency		Total in equivalent of currency	
		No.	%	million ROL	%	USD	%	EURO	%
0	1	2		3		4		5	
	<b>Total ROMANIA</b>	<b>799</b>	<b>100,0</b>	<b>3531556,7</b>	<b>100,0</b>	<b>112428993</b>	<b>100,0</b>	<b>92021681</b>	<b>100,0</b>
1	<b>GREAT BRITAIN</b>	18	2,25	882753,6	25,00	26404115	23,49	21611428	23,49
2	<b>GERMANY</b>	55	6,88	593631,7	16,81	17888883	15,91	14641820	15,91
3	<b>NETHERLAND</b>	30	3,75	471947,2	13,36	16436737	14,62	13453257	14,62
4	<b>U.S.A.</b>	23	2,88	517677,3	14,66	15892221	14,14	13007578	14,14
5	<b>JAPAN</b>	1	0,13	478895,3	13,56	14640000	13,02	11982651	13,02
6	<b>ITALY</b>	173	21,65	94245,2	2,67	4833373	4,30	3956053	4,30
7	<b>TURKEY</b>	80	10,01	65952,9	1,87	2465875	2,19	2018287	2,19
8	<b>CHINA</b>	79	9,89	74700,9	2,12	2339483	2,08	1914837	2,08
9	<b>CYPRUS</b>	12	1,50	54606,5	1,55	1716082	1,53	1404591	1,53
10	<b>FRANCE</b>	33	4,13	52056,6	1,47	1560584	1,39	1277318	1,39
11	<b>AUSTRIA</b>	24	3,00	47442,2	1,34	1398084	1,24	1144314	1,24
12	<b>BELGIUM</b>	3	0,38	19056,3	0,54	1284719	1,14	1051526	1,14
13	<b>SPAIN</b>	9	1,13	25729,5	0,73	771080	0,69	631119	0,69
14	<b>LEBANON</b>	16	2,00	26143,9	0,74	749548	0,67	613495	0,67
15	<b>HUNGARY</b>	27	3,38	19590,9	0,55	722395	0,64	591271	0,64
16	<b>IRAQ</b>	8	1,00	19561,3	0,55	584998	0,52	478813	0,52
17	<b>SWITZERLAND</b>	15	1,88	16031,9	0,45	473182	0,42	387293	0,42
18	<b>ICELAND</b>	1	0,13	11749,0	0,33	351899	0,31	288025	0,31
19	<b>A.R. OF SYRIA</b>	33	4,13	9065,3	0,26	347800	0,31	284670	0,31
20	<b>EGYPT</b>	14	1,75	9575,0	0,27	291944	0,26	238952	0,26
21	<b>SERBIA AND MONTENEGRO</b>	3	0,38	8014,9	0,23	239404	0,21	195949	0,21
22	<b>GREECE</b>	22	2,75	5860,5	0,17	182347	0,16	149249	0,16
23	<b>IRAN</b>	27	3,38	5639,3	0,16	173656	0,15	142135	0,15
24	<b>BULGARIA</b>	6	0,75	5068,5	0,14	150206	0,13	122942	0,13
25	<b>SLOVAKIA</b>	2	0,25	3162,1	0,09	92209	0,08	75472	0,08
26	<b>ISRAEL</b>	20	2,50	3068,3	0,09	90666	0,08	74209	0,08
27	<b>JORDAN</b>	5	0,63	2506,2	0,07	74418	0,07	60910	0,07
28	<b>VIETNAM</b>	2	0,25	1305,0	0,04	39393	0,04	32243	0,04
29	<b>LUXEMBOURG</b>	1	0,13	1262,0	0,04	37842	0,03	30973	0,03
30	<b>I.VIRGINE BRIT.</b>	6	0,75	1127,5	0,03	34013	0,03	27839	0,03
31	<b>CZECH REPUBLIC</b>	1	0,13	270,1	***	30011	0,03	24564	0,03
32	<b>INDIA</b>	1	0,13	935,3	0,03	27982	0,02	22903	0,02
33	<b>PAKISTAN</b>	1	0,13	180,0	***	22785	0,02	18649	0,02
34	<b>FORMER YUGOSLAVIE</b>	6	0,75	737,8	0,02	22697	0,02	18577	0,02
35	<b>UNITED ARAB EMIRATES</b>	3	0,38	490,0	0,01	16943	0,02	13868	0,02
36	<b>SOUTH KOREA</b>	4	0,50	557,4	0,02	16885	0,02	13820	0,02
37	<b>PALESTINA</b>	3	0,38	502,6	0,01	14852	0,01	12156	0,01
38	<b>MOLDAVIA</b>	20	2,50	168,4	***	5000	***	4092	***
39	<b>KENYA</b>	3	0,38	113,4	***	3392	***	2776	***
40	<b>NORWAY</b>	1	0,13	25,6	***	1851	***	1515	***
41	<b>ALBANIA</b>	1	0,13	37,5	***	1100	***	900	***
42	<b>LIECHTENSTEIN</b>	1	0,13	36,0	***	1052	***	861	***
43	<b>SENEGAL</b>	1	0,13	22,2	***	900	***	737	***
44	<b>PANAMA</b>	2	0,25	8,4	***	333	***	273	***
45	<b>AUSTRALIA</b>	4	0,50	6,3	***	201	***	165	***
46	<b>PORTUGAL</b>	1	0,13	4,8	***	147	***	120	***
47	<b>SWEDEN</b>	2	0,25	3,8	***	114	***	93	***
48	<b>DENMARK</b>	2	0,25	3,0	***	90	***	74	***
49	<b>IRELAND</b>	1	0,13	2,0	***	59	***	48	***
50	<b>SAN MARINO</b>	3	0,38	1,9	***	58	***	47	***

\*) on countries selected upon the amount of the foreign direct investment, in equivalent of currency, ranking by a descending scale (col 4)

\*\*\* Less than 0,01%

**Classification of the top 40 companies by foreign direct investment  
in the total subscribed capital, in equivalent of currency,  
during May 2004**

No. crt.	Companies	County	Country of origin of the majority investor	Amount of subscribed capital		
				Total in local currency	Total in equivalent of currency	Total in equivalent of currency
				million ROL	thousand USD	thousand EURO
0	1	2	3	4	5	6
1	EUROPHARM HOLDING SA	BRASOV	GREAT BRITAIN	680358,8	20000,0	16369,7
2	YAZAKI COMPONENT TECHNOLOGY	ARAD	JAPAN	478895,3	14640,0	11982,7
3	ASTRA VAGOANE ARAD SA	ARAD	U.S.A.	452526,3	13813,4	11306,1
4	LEONI WIRING SYSTEMS RO SRL	BISTRITA-NASAUD	GERMANY	283499,2	8415,2	6887,7
5	ALSTOM POWER ROMANIA SRL	BUCURESTI	NETHERLAND	253125,0	7506,0	6143,6
6	REWE PROJEKTENTWICKLUNG ROMANIA SRL	BUCURESTI	GERMANY	209525,4	6265,7	5128,4
7	EXPRES SRL	BUCURESTI	NETHERLAND	27010,0	3001,1	2456,4
8	HOEGANAES CORPORATION EUROPE	BUZAU	GREAT BRITAIN	80358,0	2529,8	2070,6
9	AMROMCO ENERGY SRL	PRAHOVA	U.S.A.	60425,0	1767,7	1446,9
10	ELETTRA COMMUNICATIONS SA	PRAHOVA	ITALY	53155,0	1625,5	1330,5
11	MEDIA PRO INTERNATIONAL SA	BUCURESTI	NETHERLAND	46508,0	1603,7	1312,6
12	SCA PACKAGING ROMANIA SRL	TIMIS	NETHERLAND	48488,8	1418,5	1161,1
13	CELESTICA ( ROMANIA ) SRL	BRASOV	CANADA	34078,0	1000,0	818,5
14	PLUS DISCOUNT ROMANIA SCS	ILFOV	GERMANY	40488,7	999,2	817,9
15	FERALNAV SRL	TULCEA	GREAT BRITAIN	33750,1	990,0	810,3
16	LAFARGE ROMCIM SA	BUCURESTI	FRANCE	28729,6	852,8	698,0
17	ESPINA ROMANIA PROD IMPEX SRL	BUCURESTI	SPAIN	24296,5	728,4	596,2
18	BANCA COMERCIALA CARPATICA SA	SIBIU	GERMANY	24550,0	726,2	594,4
19	P.S. INTEX SA	TIMIS	HUNGARY	14639,9	535,6	438,3
20	SAINT GOBAIN WEBER ROMANIA SRL	CLUJ	FRANCE	17648,0	535,0	437,9
21	AUTO ITALIA IMPEX SRL	BUCURESTI	AUSTRIA	17499,5	523,2	428,2
22	TMD SA	DOLJ	ITALY	16424,6	505,2	413,5
23	SANPHARM SA	BRASOV	IRAQ	16500,0	487,6	399,1
24	QUIN ROMANIA SRL	BRASOV	GERMANY	16140,0	476,2	389,8
25	EAST STICKS & PACKAGING SA	TIMIS	ITALY	16149,6	472,6	386,8
26	INFOPRESS SA	HARGHITA	CYPRUS	13622,8	402,1	329,1
27	SWISSCAPS ROMANIA SRL	PRAHOVA	SWITZERLAND	11568,9	348,0	284,8
28	OZEL STEEL PROFIL SRL	PRAHOVA	TURKEY	9995,0	299,6	245,2
29	GALLAHER ROMANIA SRL	BUCURESTI	AUSTRIA	10130,3	297,2	243,3
30	ROMPLY PROD SRL	CALARASI	AUSTRIA	9816,6	291,1	238,2
31	F.M.P.FAGET MOEBEL PRODUKTION	TIMIS	GERMANY	1082,5	274,3	224,5
32	MEFIN SA SINAIA	PRAHOVA	CYPRUS	8751,5	256,9	210,2
33	DANUBIUS INDUSTRIES SA	MEHEDINTI	SERBIA AND	8007,7	235,4	192,7
34	HADITON 2002 SRL	ARGES	LEBANON	8000,0	233,3	191,0
35	PAMOLA IMPORT EXPORT SRL	MURES	ITALY	1940,0	222,0	181,7
36	INCALTAMINTE LAGO SRL	BIHOR	ITALY	6351,5	193,7	158,5
37	RUBY ROSE INDUSTRIAL COMPANY	BUCURESTI	LEBANON	6337,5	191,1	156,4
38	CLONE INTEROM SRL	BUCURESTI	CHINA	6248,6	188,5	154,3
39	AESSE MANUFACTURING SRL	TIMIS	ITALY	6230,5	184,9	151,4
40	ZIDAN GROUP SRL	VALCEA	TURKEY	6276,3	183,5	150,2

Table no. 21

**Number of registered companies with foreign investment capital  
and amount of subscribed capital,  
between 1991 and 2003**

balance account at 30 April 2004	Number of companies		Amount of subscribed capital					
			Total on ROL		Total on currency		Total on currency	
	No.	%	millions ROL	%	thousands USD	%	thousands EURO	%
0	1	2		3		4		
<b>1991 - 2003, out of which:</b>	<b>97388</b>	<b>100,0</b>	<b>178152827,0</b>	<b>100,0</b>	<b>10432104,9</b>	<b>100,0</b>	<b>8538543,4</b>	<b>100,0</b>
<b>1991</b>	5493	5,6	1278483,9	0,7	880492,7	8,4	720671,9	8,4
<b>1992</b>	11797	12,1	586251,3	0,3	539984,2	5,2	441970,1	5,2
<b>1993</b>	10607	10,9	919631,6	0,5	417424,2	4,0	341656,3	4,0
<b>1994</b>	11086	11,4	2344415,3	1,3	908929,8	8,7	743947,3	8,7
<b>1995</b>	3395	3,5	731532,1	0,4	283248,8	2,7	231835,5	2,7
<b>1996</b>	3629	3,7	2278836,9	1,3	575412,5	5,5	470967,8	5,5
<b>1997</b>	5257	5,4	2413470,3	1,4	373981,1	3,6	306098,7	3,6
<b>1998</b>	8846	9,1	7372011,8	4,1	731930,5	7,0	599075,7	7,0
<b>1999</b>	7402	7,6	12379943,5	6,9	958022,1	9,2	784128,8	9,2
<b>2000</b>	8592	8,8	18379865,0	10,3	828495,4	7,9	678112,8	7,9
<b>2001</b>	7163	7,4	48358277,2	27,1	1536896,2	14,7	1257929,8	14,7
<b>2002</b>	7519	7,7	35661429,6	20,0	1081348,5	10,4	885069,8	10,4
<b>2003</b>	6602	6,8	45448678,5	25,5	1315938,8	12,6	1077078,9	12,6

Diagram no. 9

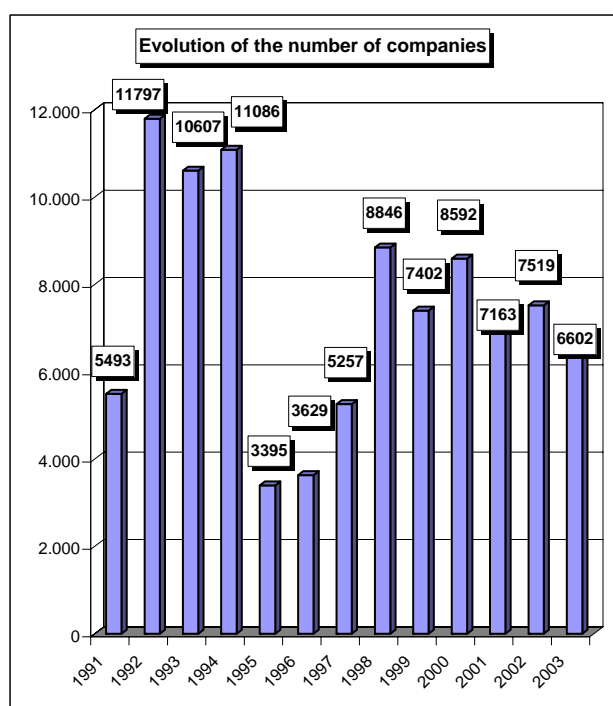


Diagram no. 10

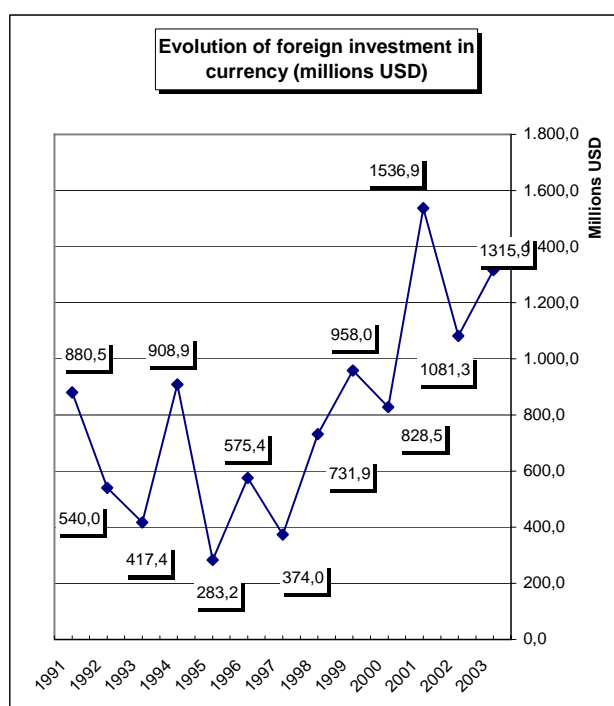


Table no. 22

**Number of registered companies, with foreign capital investment  
and the value of the invested capital,  
between 1991 and 2003**

balance account at 30 April 2004	Number of companies		Amount of subscribed capital						Order by:	
			Total on ROL		Total on currency		Total on currency			
	No.	%	millions ROL	%	thousands USD	%	thousands EURO	%		
0	1		2		3		4		5	
<b>Total ROMANIA</b>	<b>97388</b>	<b>100,0</b>	<b>178152827,0</b>	<b>100,0</b>	<b>10432104,9</b>	<b>100,0</b>	<b>8538543,4</b>	<b>100,0</b>	*	**
ALBA	847	0,9	1098122,8	0,6	88235,2	0,8	72219,4	0,8	18	19
ARAD	2568	2,6	2098068,6	1,2	142133,8	1,4	116334,7	1,4	5	12
ARGES	823	0,8	17669549,3	9,9	612844,4	5,9	501605,3	5,9	19	3
BACAU	731	0,8	3872969,2	2,2	111282,5	1,1	91083,3	1,1	22	16
BIHOR	2497	2,6	4321769,9	2,4	194117,8	1,9	158882,9	1,9	6	9
BISTRITA-NASAUD	597	0,6	210449,6	0,1	13782,5	0,1	11280,8	0,1	25	37
BOTOSANI	246	0,3	121428,2	0,1	6182,5	0,1	5060,3	0,1	37	41
BRASOV	2421	2,5	1790804,1	1,0	121749,6	1,2	99650,5	1,2	7	13
BRAILA	400	0,4	468050,3	0,3	32165,6	0,3	26327,1	0,3	29	31
BUZAU	452	0,5	635286,1	0,4	27728,6	0,3	22695,5	0,3	28	33
CARAS-SEVERIN	673	0,7	337508,5	0,2	47888,8	0,5	39196,3	0,5	23	27
CALARASI	256	0,3	1248305,1	0,7	44847,1	0,4	36706,7	0,4	36	28
CLUJ	4004	4,1	4885286,0	2,7	272144,3	2,6	222746,6	2,6	3	8
CONSTANTA	3410	3,5	13063254,5	7,3	493883,5	4,7	404237,3	4,7	4	5
COVASNA	522	0,5	378721,3	0,2	43875,7	0,4	35911,7	0,4	26	29
DAMBOVITA	467	0,5	4256053,7	2,4	153475,2	1,5	125617,5	1,5	27	11
DOLJ	1109	1,1	804584,3	0,5	194063,2	1,9	158838,3	1,9	15	10
GALATI	754	0,8	19808515,5	11,1	654189,4	6,3	535445,6	6,3	21	2
GIURGIU	266	0,3	266179,7	0,1	12134,8	0,1	9932,2	0,1	35	39
GORJ	238	0,2	22934,1	0,0	1907,8	0,0	1561,5	0,0	39	42
HARGHITA	1230	1,3	743061,6	0,4	48302,5	0,5	39535,0	0,5	13	26
HUNEDOARA	928	1,0	868066,9	0,5	68257,5	0,7	55867,9	0,7	17	21
IALOMITA	205	0,2	117230,6	0,1	11095,8	0,1	9081,8	0,1	40	40
IASI	1292	1,3	647735,6	0,4	67291,3	0,6	55077,1	0,6	12	22
MARAMURES	1219	1,3	2221418,0	1,2	91163,3	0,9	74615,9	0,9	14	18
MEHEDINTI	353	0,4	743159,3	0,4	28507,9	0,3	23333,4	0,3	31	32
MURES	1766	1,8	2577001,8	1,4	121749,3	1,2	99650,2	1,2	10	14
NEAMT	604	0,6	1840689,7	1,0	120687,0	1,2	98780,7	1,2	24	15
OLT	299	0,3	1982970,4	1,1	70144,0	0,7	57411,9	0,7	34	20
PRAHOVA	1549	1,6	5802937,0	3,3	387644,0	3,7	317281,6	3,7	11	7
SALAJ	321	0,3	305847,9	0,2	17239,3	0,2	14110,1	0,2	33	36
SATU MARE	980	1,0	1024552,2	0,6	66698,6	0,6	54591,9	0,6	16	23
SIBIU	1810	1,9	934886,8	0,5	94843,8	0,9	77628,4	0,9	9	17
SUCEAVA	811	0,8	780709,9	0,4	49097,1	0,5	40185,3	0,5	20	25
TELEORMAN	186	0,2	902030,2	0,5	42339,6	0,4	34654,4	0,4	41	30
TIMIS	5954	6,1	7040819,7	4,0	493010,1	4,7	403522,4	4,7	2	6
TULCEA	244	0,3	221128,5	0,1	12866,5	0,1	10531,0	0,1		38
VASLUI	183	0,2	532839,7	0,3	23169,1	0,2	18963,6	0,2	42	35
VALCEA	373	0,4	460943,9	0,3	50744,4	0,5	41533,6	0,5	30	24
VRANCEA	323	0,3	143572,0	0,1	27027,0	0,3	22121,2	0,3	32	34
MUN. BUCURESTI	51079	52,4	63108757,2	35,4	4686866,1	44,9	3836139,5	44,9	1	1
ILFOV	2398	2,5	7794627,3	4,4	584729,0	5,6	478593,1	5,6	8	4

\*) number of companies

Table no. 23

**Number of registered companies, with foreign capital investment  
and the value of the invested capital, on economic development areas,  
between 1991 and 2003**

Economic development areas	Number of companies		Amount of subscribed capital						Order by:	
			Total on ROL		Total on currency		Total on currency			
	No.	%	millions ROL	%	thousands USD	%	thousands EURO	%		
0	1		2		3		4		5	
<b>Total ROMANIA</b>	<b>97388</b>	<b>100,0</b>	<b>178152827,0</b>	<b>100,0</b>	<b>10432104,9</b>	<b>100,0</b>	<b>8538543,4</b>	<b>100,0</b>	*	**
NORTH-EAST	3867	4,0	7796372,3	4,4	377709,4	3,6	309150,3	3,6	6	7
SOUTH-EAST	5583	5,7	34339807,0	19,3	1247860,4	12,0	1021357,7	12,0	5	3
SOUTH-MUNTENIA	3752	3,9	30262285,6	17,0	1264380,8	12,1	1034879,3	12,1	7	2
SOUTH-WEST OLTENIA	2372	2,4	4014592,0	2,3	345367,3	3,3	282678,7	3,3	8	8
WEST	10123	10,4	10344463,6	5,8	751290,1	7,2	614921,3	7,2	2	4
at 31 December 2003	9618	9,9	12969323,6	7,3	655145,6	6,3	536228,3	6,3	3	5
CENTER	8596	8,8	7522598,5	4,2	518756,1	5,0	424595,2	5,0	4	6
BUCHAREST-ILFOV	53477	54,9	70903384,4	39,8	5271595,1	50,5	4314732,6	50,5	1	1

Table no. 24

**Number of registered companies, with foreign capital investment  
and the value of the invested capital, on continents  
between 1991 and 2003**

Continent	Number of companies		Amount of subscribed capital						Order by:	
			Total on ROL		Total on currency		Total on currency			
	No.	%	millions ROL	%	thousands USD	%	thousands EURO	%		
0	1		2		3		4		5	
<b>Total ROMANIA</b>	<b>97388</b>	<b>100,0</b>	<b>178152827,0</b>	<b>100,0</b>	<b>10432104,9</b>	<b>100,0</b>	<b>8538543,4</b>	<b>100,0</b>	*	**
EUROPE	60583	62,2	139832267,8	78,5	8182076,3	78,4	6696924,0	78,4	1	1
AFRICA	2161	2,2	238768,4	0,1	33404,1	0,3	27340,8	0,3	4	6
NORTH AMERICA	4698	4,8	7517780,7	4,2	767990,5	7,4	628590,3	7,4	3	2
SOUTH AMERICA	627	0,6	3549702,2	2,0	156406,0	1,5	128016,3	1,5	5	5
ASIA	32937	33,8	6895730,5	3,9	646897,5	6,2	529477,3	6,2	2	3
OCEANIA	470	0,5	20118034,5	11,3	645218,2	6,2	528102,8	6,2	6	4

Table no. 25

**Number of registered companies, with foreign capital investment  
and the value of the invested capital, on economic groups,  
between 1991 and 2003**

Economic groups	Number of companies		Amount of subscribed capital							
			Total on ROL		Total on currency		Total on currency			
	No.	%	millions ROL	%	thousands USD	%	thousands EURO	%		
0	1		2		3		4		5	
<b>Total ROMANIA</b>	<b>97388</b>		<b>178152827,0</b>		<b>10432104,9</b>		<b>8538543,4</b>		*	**
U.E.	40501	41,6	114419429,1	64,2	6384264,7	61,2	5225438,3	61,2	2	2
A.E.L.S.	1562	1,6	6754219,8	3,8	390960,1	3,7	319995,8	3,7	4	3
O.E.C.D.	60768	62,4	139331350,5	78,2	8487620,8	81,4	6947008,1	81,4	1	1
C.E.F.T.A.	5457	5,6	5459992,9	3,1	298805,3	2,9	244568,3	2,9	3	4

Note: Each economic group's weight is calculated in total Romania.

Diagram no. 11

Percentage of companies with foreign investment,  
between 1991 and 2003, on fields of activity\*

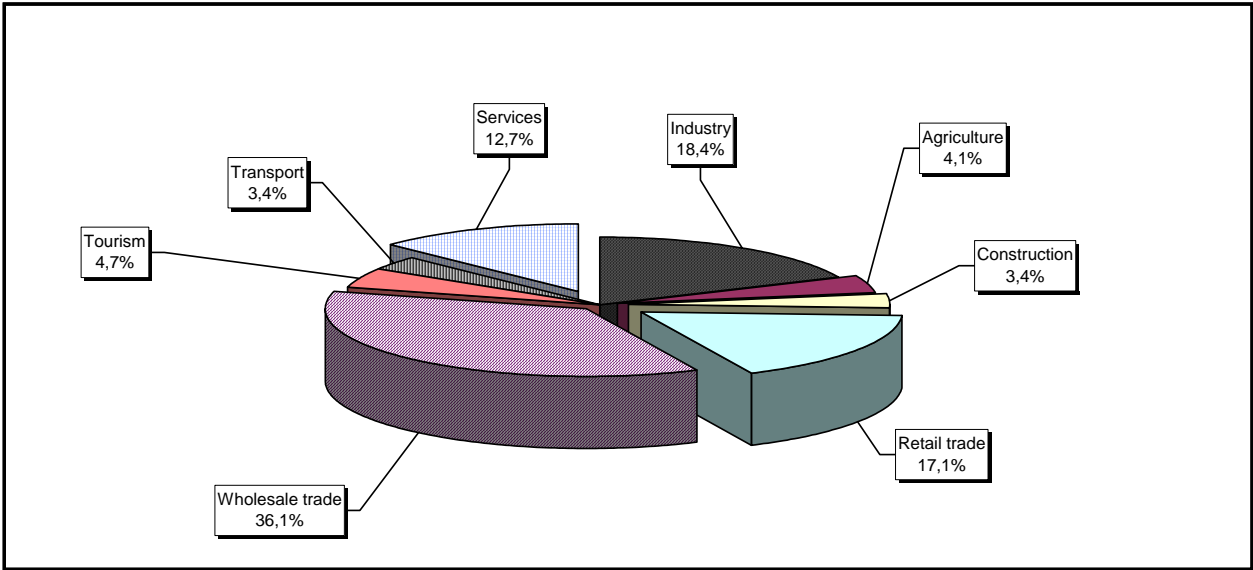
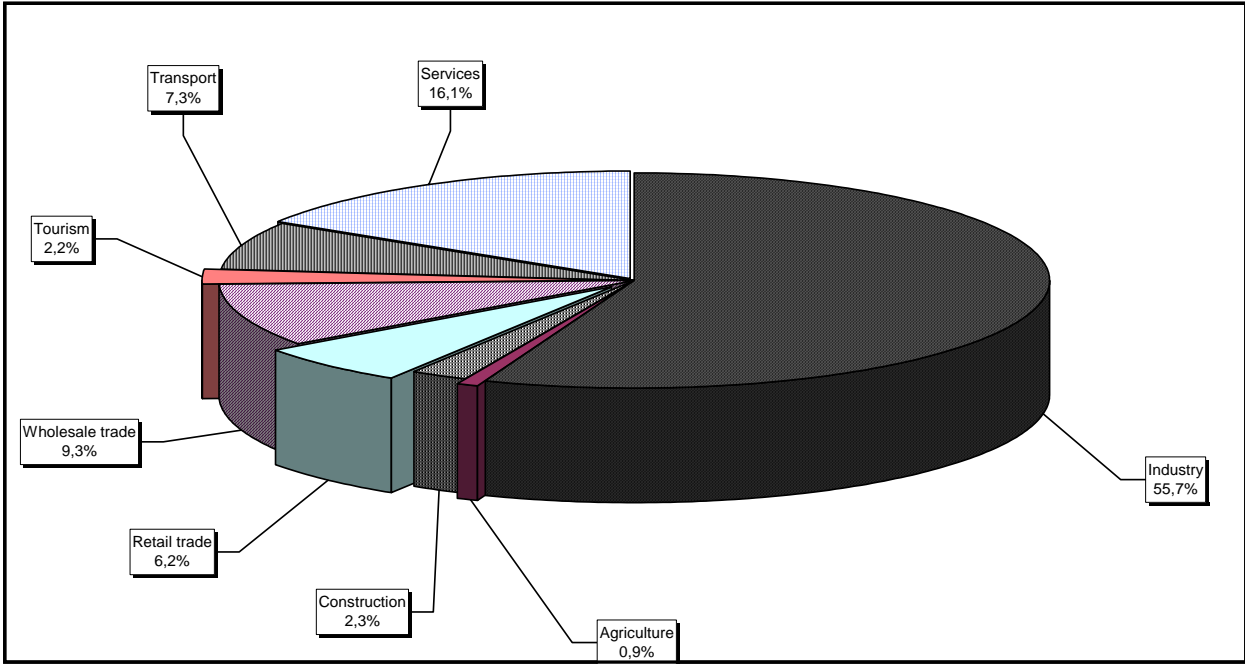


Diagram no. 12

Percentage of foreign currency invested capital\*\* in companies  
with foreign investment, between 1991 and 2003, on fields of activity



\*) Calculated on main activity

\*\*) Calculated on the total amount in currency

Table no. 26

**Countries classification on foreign  
investment capital registered  
between 1991 and December 2003**

No. crt.	Countries	Number of companies		Amount of subscribed capital					
				Total on ROL		Total on currency		Total on currency	
		No.	%	millions ROL	%	thousands USD	%	thousands EURO	%
0	1	2		3		4		5	
	<b>Total ROMANIA, out of which:</b>	<b>97388</b>	<b>100,00</b>	<b>178152827,0</b>	<b>100,00</b>	<b>10432104,9</b>	<b>100,00</b>	<b>8538543,4</b>	<b>100,00</b>
1	NETHERLAND	1748	1,79	34677177,0	19,46	1861890,2	17,85	1523933,2	17,85
2	FRANCE	3159	3,24	23075253,3	12,95	1067487,1	10,23	873724,4	10,23
3	GERMANY	10968	11,26	13356969,3	7,50	885518,6	8,49	724785,5	8,49
4	U.S.A.	3803	3,90	7070659,7	3,97	708729,6	6,79	580086,1	6,79
5	ITALY	14206	14,59	8160354,2	4,58	639114,0	6,13	523106,6	6,13
6	AUSTRIA	2793	2,87	13699060,4	7,69	602461,9	5,78	493107,3	5,78
7	ANTILELE OLANDEZE	9	***	19068759,7	10,70	598478,8	5,74	489847,2	5,74
8	CYPRUS	1148	1,18	7757735,7	4,35	504098,5	4,83	412598,2	4,83
9	TURKEY	8688	8,92	4170470,3	2,34	434897,1	4,17	355957,7	4,17
10	GREAT BRITAIN	1661	1,71	6360493,4	3,57	374994,7	3,59	306928,4	3,59
11	GREECE	2563	2,63	5364836,2	3,01	318525,0	3,05	260708,6	3,05
12	SWITZERLAND	1256	1,29	5829591,8	3,27	312091,4	2,99	255442,8	2,99
13	HUNGARY	4406	4,52	5059240,0	2,84	266225,2	2,55	217901,9	2,55
14	SOUTH KOREA	82	0,08	481704,4	0,27	218348,4	2,09	178715,4	2,09
15	LUXEMBOURG	220	0,23	3022810,0	1,70	199478,1	1,91	163270,3	1,91
16	SPAIN	627	0,64	955224,9	0,54	160355,0	1,54	131248,5	1,54
17	I.VIRGINE BRIT.	191	0,20	3269391,7	1,84	123491,0	1,18	101075,8	1,18
18	SWEDEN	785	0,81	2452970,0	1,38	107531,4	1,03	88013,1	1,03
19	CHINA	8224	8,44	2415544,3	1,36	105632,4	1,01	86458,8	1,01
20	WITH OUT CITIZENSHIP	21	0,02	7635,2	***	75690,3	0,73	61951,5	0,73
21	PORTUGAL	92	0,09	1843711,8	1,03	64038,3	0,61	52414,5	0,61
22	A.R. OF SYRIA	5263	5,40	564439,7	0,32	63842,6	0,61	52254,3	0,61
23	CANADA	895	0,92	447121,0	0,25	59260,9	0,57	48504,3	0,57
24	LIECHTENSTEIN	151	0,16	671538,2	0,38	58850,5	0,56	48168,4	0,56
25	BELGIUM	1167	1,20	742596,0	0,42	58545,5	0,56	47918,8	0,56
26	JAPAN	133	0,14	1372111,3	0,77	56314,1	0,54	46092,3	0,54
27	IRAQ	5784	5,94	565156,2	0,32	52348,9	0,50	42846,9	0,50
28	LEBANON	3308	3,40	526826,3	0,30	46118,6	0,44	37747,5	0,44
29	ISRAEL	2571	2,64	237042,0	0,13	28449,2	0,27	23285,3	0,27
30	MARSHALL ISLANDS	7	***	804183,8	0,45	25249,4	0,24	20666,3	0,24
31	GIBRALTAR	26	0,03	428937,3	0,24	24481,1	0,23	20037,4	0,23
32	IRELAND	198	0,20	232099,9	0,13	24045,0	0,23	19680,5	0,23
33	FORMER YUGOSLAVIE	729	0,75	89809,2	0,05	22692,5	0,22	18573,5	0,22
34	IRAN	2591	2,66	172596,7	0,10	20417,3	0,20	16711,3	0,20
35	DENMARK	261	0,27	438462,1	0,25	18310,5	0,18	14986,9	0,18
36	PANAMA	115	0,12	132734,6	0,07	17832,2	0,17	14595,5	0,17
37	MONACO	29	0,03	302808,6	0,17	15470,9	0,15	12662,7	0,15
38	JORDAN	3053	3,13	122707,9	0,07	15117,4	0,14	12373,4	
39	ICELAND	12	0,01	111156,0	0,06	14044,0	0,13	11494,8	0,13
40	MOLDAVIA	1596	1,64	127754,9	0,07	13547,0	0,13	11088,1	0,13
41	KUWEIT	146	0,15	28059,7	0,02	12062,0	0,12	9872,6	0,12
42	EGYPT	1274	1,31	102119,3	0,06	10749,7	0,10	8798,5	0,10
43	BULGARIA	514	0,53	81903,2	0,05	10233,3	0,10	8375,8	0,10
44	CZECH REPUBLIC	206	0,21	77338,4	0,04	10006,2	0,10	8190,0	0,10
45	AUSTRALIA	400	0,41	36163,6		9363,8	0,09	7664,1	0,09
46	CAMEROON	11	0,01	31887,3	0,02	9045,2	0,09	7403,4	0,09
47	INS. VIRGINE AMR.	34	0,03	89609,8	0,05	7991,3	0,08	6540,8	0,08
48	POLAND	221	0,23	114105,0	0,06	7990,3	0,08	6540,0	0,08
49	CAYMAN ISLANDS	8	***	52718,3	0,03	6461,1	0,06	5288,4	0,06
50	THAILANDA	18	0,02	139498,4	0,08	6180,1	0,06	5058,4	0,06
51	NORWEY	143	0,15	141933,7	0,08	5974,3	0,06	4889,9	0,06
52	LIBERIA	34	0,03	13797,9	***	5145,2	0,05	4211,3	0,05
53	PAKISTAN	656	0,67	64218,8	0,04	4611,0	0,04	3774,0	0,04
54	BAHAMAS	24	0,02	60395,2	0,03	4303,3	0,04	3522,2	0,04

