



MINISTRY OF JUSTICE

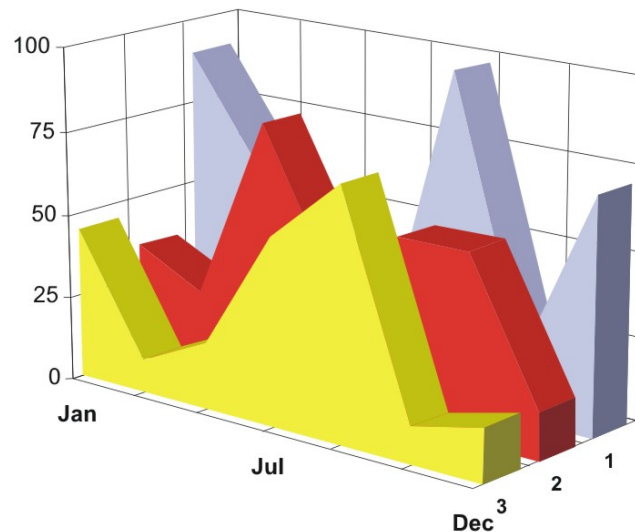
THE NATIONAL TRADE REGISTER OFFICE

București, Bd. Unirii nr. 74, Bl. J3b, tronson II+III, sector 3; Telefon: +40 21 316.08.04, 316.08.10; Fax: +40 21 316.08.03; Cod poștal: 030837  
Website: [www.onrc.ro](http://www.onrc.ro); E-mail: [onrc@onrc.ro](mailto:onrc@onrc.ro); Cod identificare Fiscală: 14942091

# COMPANIES BY FOREIGN DIRECT INVESTMENT

## STATISTICAL SYNTHESIS

**OF THE NATIONAL TRADE REGISTER'S DATA  
30<sup>th</sup> JUNE 2009 - PROVISIONAL DATA**



**MINISTRY OF JUSTICE  
THE NATIONAL TRADE REGISTER OFFICE**

---

- Operations such as incorporation of trading companies, submission of changes, and strike-off are carried out based on Law No.26/1990, as republished, Law No.31/1990, as republished and on the Methodological Norms no. P/608/1998.
  
- This work reflects the evolution of the operations regarding trading companies with foreign participation in the share capital with the Trade Register Office attached to Bucharest Law Court and the Trade Register Offices attached to County Law Courts.
  
- The data contained in the Central Trade Register refer to operations for which law sets out the obligation of being registered in the trade registers kept by the 42 trade register offices attached to law courts.

- *The content of this publication shall not be reproduced, partly or entirely, in original or modified form, and shall not be stored in a recovery system and shall not be transmitted in any form or by any means without prior written authorization of the Ministry of Justice – The National Trade Register Office.*
  - *The content of this publication shall not be used in articles, studies, books, as supporting or explanatory data only by clearly and accurately indicating the source.*

# Contents

	Page
<b>1 Definitions</b>	<b>1</b>
<b>2.1 Tables and statistical charts – data related to June 2009</b>	<b>3</b>
Table no. 1 – Number of trading companies with foreign participation in the share capital and the subscribed share capital - balance on 30 June 2009	3
Chart no. 1 – Structure of the number of trading companies with foreign participation in the share capital	3
Chart no. 2 – Investment structure in equivalent currency	3
Table no. 2 – Top of companies by residence countries of investors in trading companies with foreign participation in the share capital - balance on 30 June 2009	4
Chart no. 3 – Structure by domains of activity of the number of trading companies with foreign participation in the share during June 2009	5
Chart no. 4 – Structure by domains of activity of the value of share capital subscribed by trading companies with foreign participation during June 2009	5
Table no. 3 – Number of trading companies with foreign participation in the share capital, and the value of the subscribed share capital – balance at the end of each month of 2008	6
Chart no. 5 – Evolution of the number of trading companies with foreign participation in the share capital – data at the end of the period in 2009	6
Chart no. 6 – Evolution of the investment balance expressed in equivalent currency (thousand USD) - data at the end of the period in 2009.	6
Table no. 4 – New trading companies with foreign participation in the subscribed share capital during December - December 2008 and 2009	7
Chart no. 7 – Dynamics of the number of new companies with foreign participation in the share capital during December – December 2008 and 2009	7
Chart no. 8 – Dynamics of the value of share capital subscribed in new companies during December – December of 2008 and 2009	7
Table no. 5 – Incorporation of trading companies with foreign participation in the share capital during the month of June 2009	8
Table no. 6 – Submission to increase the share capital in trading companies with foreign participation during the month of June 2009	9
Table no. 7 – Strike-off of trading companies with foreign participation in the share capital from the trade register during the month of June 2009	10
Table no. 8 – Submission for share capital assignment in trading companies with foreign participation during the month of June 2009	11
Table no. 9 – Incorporation of trading companies with foreign participation in the share capital, by regions of economic development, during the month of June 2009	12
Table no. 10 – Submission for increase of share capital of trading companies with foreign participation, by regions of economic development, during the month of June 2009	12
Table no. 11 – Strike-off of trading companies with foreign participation, by regions of economic development, during the month of June 2009	12
Table no. 12 – Incorporation of trading companies with foreign participation in the share capital, by continents, according to the investor’s residence, during the month of June 2009	13

Table no.13 – Submission to increase the share capital of trading companies with foreign participation, by continents according to the investor’s residence, during the month of June 2009	13
Table no. 14 – Strike-off of trading companies with foreign participation, by continents, according to the investor’s residence, during the month of June 2009	13
Table no. 15 – Incorporation of trading companies with foreign participation in the share capital, by economic groupings of countries, according to the investor’s residence, during the month June 2009	14
Table no. 16 – Submission for increase of the share capital of trading companies with foreign participation, by economic groupings of countries, according to the investor’s residence, during the month of June 2009	14
Table no. 17 – Strike-off of trading companies with foreign participation, by economic groupings of countries, according to the investor’s residence, during the month of June 2009	14
Table no. 18 – Top by residence countries of investors in trading companies with foreign participation in the share capital, incorporated during the month of June 2009	15
Table no. 19 – Top by residence countries of investors according to the value of the share capital registered by submission for increase of the share capital during the month of June 2009	16
Table no. 20 –Top of the first 40 trading companies by foreign participation in the total subscribed share capital, in equivalent currency, during the month of June 2009	17
<b>2.2 Data related to the period 1991 – 2008</b>	<b>18</b>
Table no. 21 – Number of trading companies with foreign participation in the share capital and the value of the subscribed share capital, during 1991 and 2008	18
Chart no. 9 – Evolution of the number of companies during 1991-2008	18
Chart no. 10 – Evolution of the investment expressed in equivalent currency during 1991-2008	18
Table no. 22 – Trading companies with foreign participation in the share capital and the value of the total subscribed share capital during 1991 – 2008 – balance on 31 December 2008	19
Table no. 23 – Trading companies with foreign participation in the share capital and the value of December June 2009	20
Table no. 24 – Trading companies with foreign participation in the share capital and the value of the total subscribed share capital, by continents, during 1991 and 2008 - balance on 31 December 2008	20
Table no. 25 – Trading companies with foreign participation in the share capital and the value of the total subscribed share capital, by economic groupings, during 1991 and 2008 - balance on December 2008	20
Chart no. 11 – Structure of domains of activity of the number of trading companies with foreign participation in the share capital registered during 1991 – 2008 - balance on 31 December 2008	21
Chart no. 12– Structure of domains of activity of the total share capital subscribed by trading companies with foreign participation in the share capital during 1991 and 2008 - balance on 31 December 2008	21
Table no. 26 – Top of the countries by foreign participation in the total subscribed share capital during 1991 and 2008 - balance on 31 December 2008	22

## Definitions

- **A trading company with foreign participation in the share capital** is such trading company partially or entirely established with the participation of natural or legal persons, with stable residence or registered office outside Romania.

- **Foreign investor** is a natural or legal person with stable residence or registered office outside Romania, having the capacity of associate/shareholder in a trading company with registered office in Romania.

- **Share capital** is the total value of the participation, in cash and in kind, subscribed by the shareholders upon incorporation of a company, and upon increase of the share capital during the trading company operation.

*Subscription* to the share capital by a foreign investor, according to the legislation in force, December be made in the national currency of Romania and/or in freely convertible currency.

*Increase of share capital* registered by submission includes:

- The foreign investors' participation out of new own resources, in cash and/or in kind, in lei and/or hard currency;
- participation from dividends obtained in Romania;
- acquisition of shares by a non-resident person from a resident one.

*Decrease/(increase by) assignment* of share capital includes the amounts representing participation in the share capital of non-resident associates/shareholders assigned to/(received from) resident associates/shareholders.

- **Foreign investment of capital in Romania** ( **I<sub>s</sub>** ) equals to the value of foreign capital subscribed upon incorporation ( **I** ) plus subscriptions through submissions to increase the foreign capital ( **M** ), plus/minus the assigned share capital by/to resident associates/shareholders ( **C** ), minus the share capital subscribed to companies struck-off from the trade register ( **R** ), i.e.:

$$I_s = I + M \pm C - R$$

### Used Terms:

- **incorporation** – represents the registration of the applicant in the trade register granting the quality of legal person thereto.

- **submission** – is the registration of the changes occurred during the operation of the company, such as: change of registered office, change of share capital, merger, winding-up, dissolution, etc.

- **strike-off** – is the operation of removing a company with foreign investor from the trade register, setting out the date a company loses its quality of legal person as a result of dissolution or winding-up thereof. The data regarding strike-offs also include trading companies under the provisions of Law No. 314/2001.

- **Operations** performed in the trade register represent all the registrations including incorporations, submissions and strike-offs of trading companies with foreign participation in the share capital, irrespective of the nature of activity and type of trading company.

• **Terms used in tables and charts**

➤ **Number of trading companies:** depending on the table, it represents the number of trading companies incorporated during the reference period, the number of companies having registered increases/decreases of share capital, the number of trading companies struck-off from the trade register.

➤ **The value of the subscribed share capital:**

- **a total, expressed in national currency:** the value of the subscribed share capital resulted from adding up the values subscribed in national currency (lei) with the value in freely convertible currency exchanged in lei, at the exchange rate, notified by the National Bank of Romania, of the date of the deed of incorporation/modifier document;

- **a total, expressed in currency equivalent:**

**USD** : the value of the subscribed share capital obtained by adding up and exchanging into USD the freely convertible currency, and the national currency (lei), at the exchange rate, notified by the National Bank of Romania, of the date of the deed of incorporation/modifier document

**Euro** : the balance existing at the end of each month, calculated in equivalent USD, are exchanged into Euro at EURO/USD exchange rate, notified by the National Bank of Romania, of the last working day of the respective month.

➤ **Regions of economic development:**

*North-East:* Suceava, Botoşani, Neamţ, Iaşi, Bacău, Vaslui.

*South-East:* Vrancea, Galaţi, Buzău, Brăila, Tulcea, Constanţa.

*South-Muntenia:* Argeş, Dâmboviţa, Prahova, Teleorman, Giurgiu, Călăraşi, Ialomiţa.

*South-West Oltenia:* Gorj, Vâlcea, Dolj, Mehedinţi, Olt.

*West:* Arad, Caraş-Severin, Hunedoara, Timiş.

*North-West:* Bihor, Bistriţa, Cluj, Satu Mare, Sălaj, Maramureş.

*Center:* Alba, Braşov, Covasna, Harghita, Mureş, Sibiu.

*Bucharest-Ilfov:* Bucureşti, Ilfov.

Sources of Information:

The integrated IT system of the trade register is designed by The National Trade Register Office in compliance with the provisions of the related legislation in force. The source of information consists of the trade registers organized in a computerized system, kept by the trade register offices attached to law courts.

**Number of companies by foreign direct investment  
and the amount of the subscribed capital,  
30 June 2009**

Balance account by end of period	Number of companies		Amount of subscribed capital					
			Total in ROL		Total in currency		Total in currency	
	No.	%	%	thousand USD	%	thousand EURO	%	
0	1		2		3		4	
30 June 2009, out of which	163754	102,4	71957441,4	113,4	31835784,2	109,4	23816746,7	109,6
31 December 2008	159927	100,0	63426984,9	100,0	29097969,6	100,0	21723640,8	100,0

*Note: column No. 1 shows the number of companies incorporated in the due period. The data concerning the amount of the subscribed capital include the records on the issued capital in companies incorporated in the related period plus the records of increase in capital and minus the subscribed capital in companies being struck-off from the trade register in the same period. The percentage inserted in column No. 1,2,3 and 4 shows the trend compared to the records of December 2007.*

Diagram no. 1

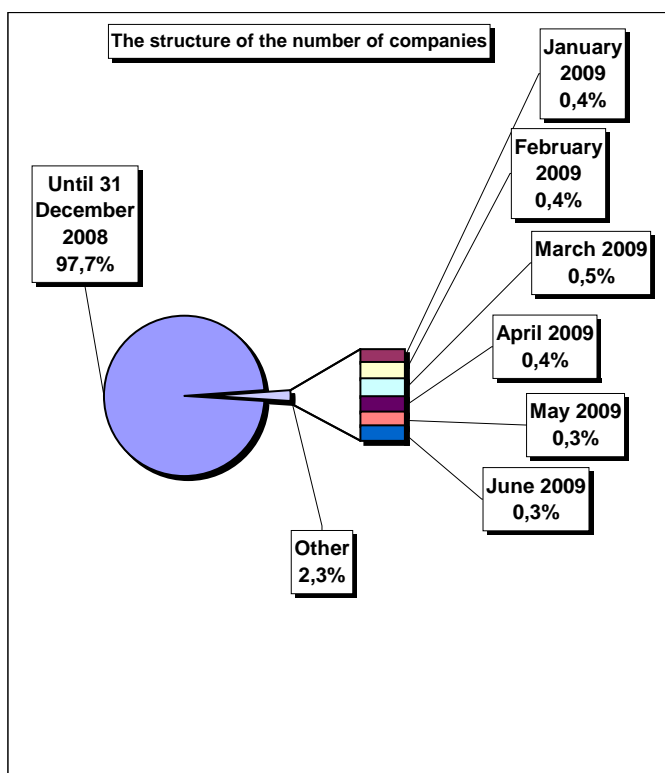


Diagram no. 2

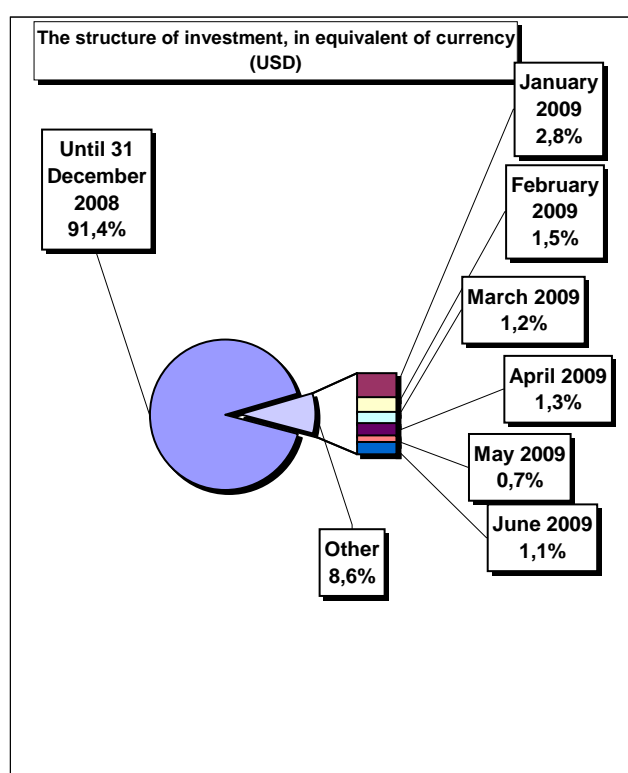


Table no. 2

**Classification\* of companies by foreign direct investment  
by the investors' countries of origin,  
balance account at 31 June 2009**

No. crt.	Countries	Companies by foreign investment		Amount of subscribed capital					
				Total in local currency		Total in equivalent of currency		Total in equivalent of currency	
		No.	%	thousand RON	%	thousand USD	%	thousand EUR	%
0	1	2		3		4		5	
	<b>Total ROMANIA</b>	<b>163754</b>	<b>100,0</b>	<b>71957441,4</b>	<b>100,0</b>	<b>31835784,2</b>	<b>100,0</b>	<b>23816746,7</b>	<b>100,0</b>
1	OLANDA	3514	2,15	15797084,1	21,95	5981625,2	18,79	4236208,4	17,79
2	AUSTRIA	5507	3,36	10177674,5	14,14	4520038,6	14,20	3201107,5	13,44
3	GERMANIA	16933	10,34	8626781,6	11,99	3762402,7	11,82	2664547,1	11,19
4	FRANTA	6003	3,67	6443684,6	8,95	3015025,8	9,47	2135252,0	8,97
5	CIPRU	4388	2,68	3574945,8	4,97	1793710,7	5,63	1270312,4	5,33
6	ITALIA	27730	16,93	3149692,5	4,38	1422989,4	4,47	1007766,2	4,23
7	GRECIA	4630	2,83	2519284,1	3,50	1134665,4	3,56	803574,1	3,37
8	S.U.A.	5863	3,58	1507658,9	2,10	1066004,5	3,35	754948,2	3,17
9	SPANIA	3632	2,22	2229767,4	3,10	1028334,7	3,23	728270,3	3,06
10	MAREA BRITANIE	4024	2,46	2209285,5	3,07	994986,3	3,13	704652,8	2,96
11	UNGARIA	9766	5,96	1846798,1	2,57	936415,0	2,94	663172,5	2,78
12	ELVETIA	2017	1,23	1548069,2	2,15	754818,6	2,37	534565,2	2,24
13	ANTILELE OLANDEZE	15	***	2037237,7	2,83	703026,7	2,21	497886,1	2,09
14	LUXEMBURG	702	0,43	1704637,7	2,37	664055,7	2,09	470286,6	1,97
15	TURCIA	11075	6,76	1014415,7	1,41	653508,5	2,05	462817,0	1,94
16	CEHIA	454	0,28	903286,2	1,26	363581,4	1,14	257489,6	1,08
17	CHINA	9595	5,86	762946,9	1,06	330398,5	1,04	233989,4	0,98
18	BELGIA	2259	1,38	575031,5	0,80	255005,0	0,80	180595,4	0,76
19	SUEDIA	1110	0,68	492532,5	0,68	201385,0	0,63	142621,5	0,60
20	JAPONIA	221	0,13	368638,2	0,51	163768,8	0,51	115981,7	0,49
21	PORTUGALIA	351	0,21	461484,6	0,64	156233,9	0,49	110645,4	0,46
22	I.VIRGINE BRIT.	293	0,18	334309,0	0,46	148832,0	0,47	105403,3	0,44
23	DANEMARCA	609	0,37	343016,1	0,48	141462,1	0,44	100184,0	0,42
24	LIBAN	3470	2,12	253886,0	0,35	136450,5	0,43	96634,7	0,41
25	ISRAEL	5850	3,57	321238,0	0,45	127541,1	0,40	90325,0	0,38
26	POLONIA	509	0,31	401869,8	0,56	115119,9	0,36	81528,4	0,34
27	CANADA	1483	0,91	199716,1	0,28	110416,8	0,35	78197,6	0,33
28	GIBRALTAR	58	0,04	236418,8	0,33	89616,0	0,28	63466,4	0,27
29	FINLANDA	117	0,07	192687,1	0,27	85604,7	0,27	60625,6	0,25
30	NORVEGIA	271	0,17	210227,6	0,29	82450,7	0,26	58391,9	0,25
31	FARA CETATENIE	25	0,02	852,2	***	78222,9	0,25	55397,7	0,23
32	COREEA SUD	152	0,09	44024,5	0,06	76527,6	0,24	54197,1	0,23
33	R. ARABA SIRIA	5294	3,23	80980,0	0,11	63598,8	0,20	45040,9	0,19
34	LIECHTENSTEIN	191	0,12	80491,6	0,11	60186,5	0,19	42624,3	0,18
35	INS.MARSHALL	15	***	145186,8	0,20	49964,0	0,16	35384,7	0,15
36	IRAK	5504	3,36	77533,5	0,11	48321,9	0,15	34221,8	0,14
37	SINGAPORE	51	0,03	106303,1	0,15	37603,8	0,12	26631,2	0,11
38	MOLDOVA	3385	2,07	78852,8	0,11	37600,3	0,12	26628,7	0,11
39	IRLANDA	699	0,43	43463,0	0,06	31153,3	0,10	22062,9	0,09
40	AUSTRALIA	619	0,38	49984,4	0,07	28789,0	0,09	20388,4	0,09
41	SLOVENIA	139	0,08	94760,0	0,13	27624,4	0,09	19563,7	0,08
42	BULGARIA	1071	0,65	58171,8	0,08	24828,3	0,08	17583,5	0,07
43	IORDANIA	3073	1,88	37777,3	0,05	23874,8	0,07	16908,2	0,07
44	IRAN	2556	1,56	32542,4	0,05	23134,5	0,07	16383,9	0,07
45	PANAMA	155	0,09	21423,3	0,03	20811,7	0,07	14738,9	0,06
46	ISLANDA	42	0,03	32050,4	0,04	20380,0	0,06	14433,2	0,06
47	EGIPT	1329	0,81	39133,2	0,05	19812,2	0,06	14031,1	0,06
48	BELIZE	29	0,02	41042,1	0,06	17028,7	0,05	12059,8	0,05
49	ARGENTINA	39	0,02	62932,5	0,09	14371,6	0,05	10178,0	0,04
50	ARABIA SAUDITA	129	0,08	35084,9	0,05	13750,1	0,04	9737,9	0,04

\*) includes countries selected upon the amount of the foreign direct investment, in equivalent of currency

\*\*\* Less than 0,01%

Diagram no. 3

The structure upon sector of activity\* of companies by foreign direct investment, during June 2009

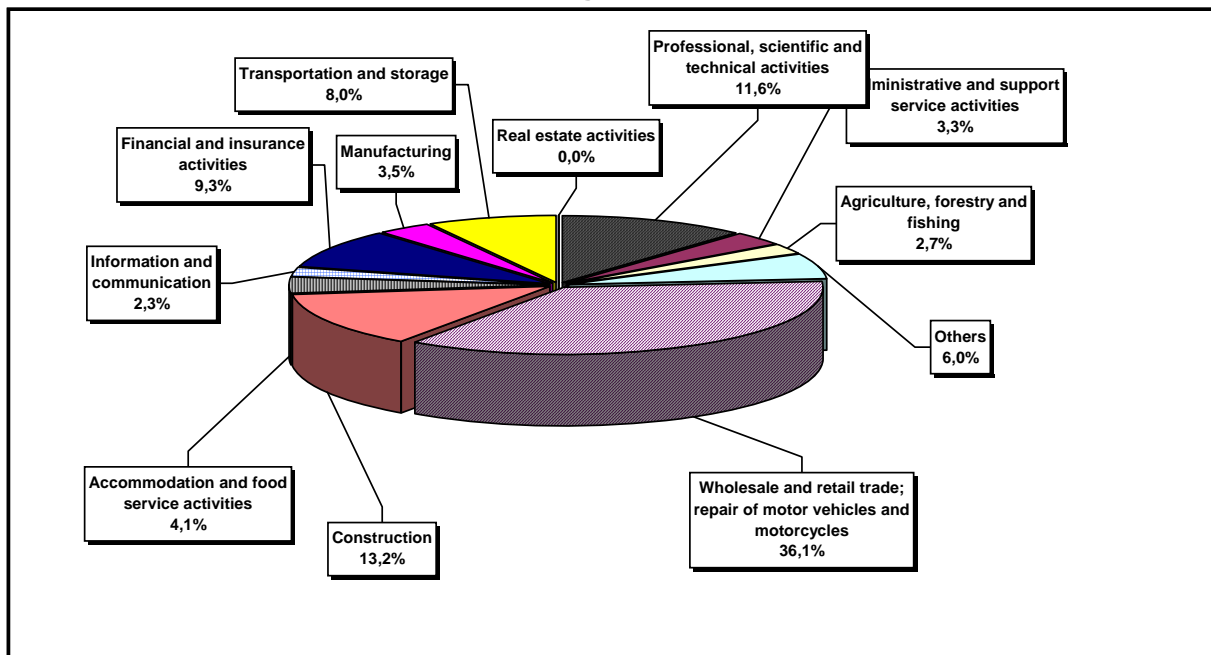
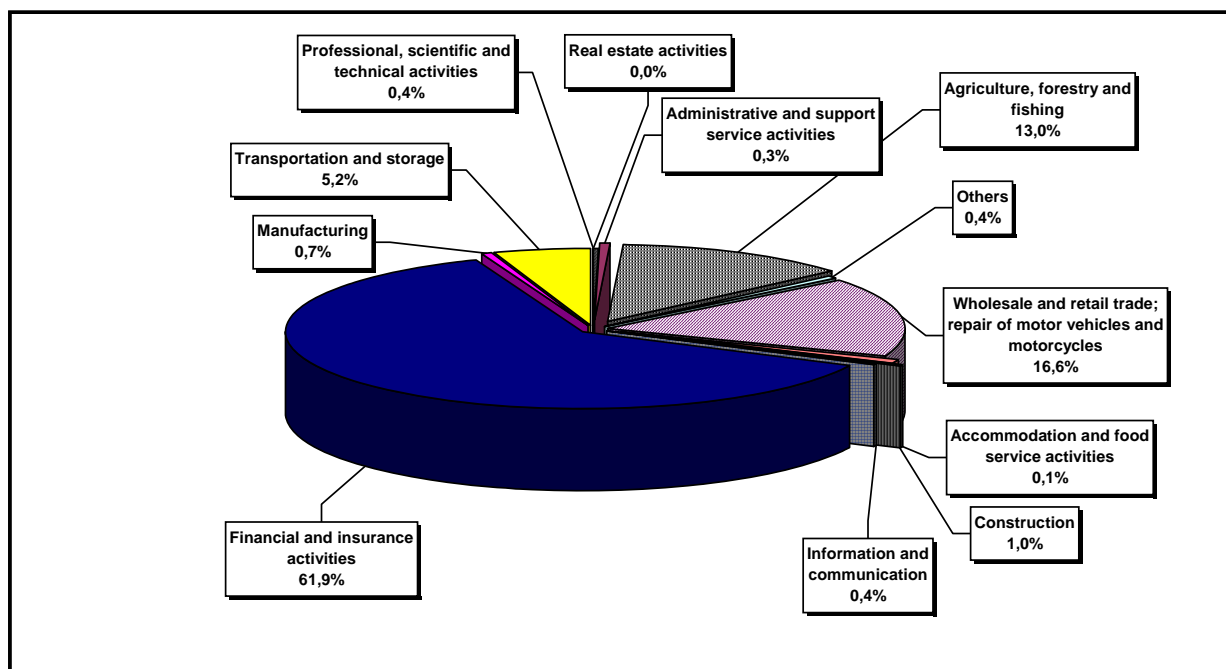


Diagram no. 4

The structure upon sector of activity in the amount of subscribed capital\*\* in companies by foreign direct investment, during June



\*) Calculated upon the main sector of activity declared

\*\*) Calculated upon the total amount of the subscribed capital, in equivalent of currency (USD)

Table no. 3

**The number of companies by foreign direct investment  
and the amount of the subscribed capital,  
balance account in the end of each month of 2009**

balance account at 30 September 2008	Number of companies		Amount of subscribed capital					
			Total in local currency		Total in equivalent of currency		Total in equivalent of currency	
	No.	%	thousand RON	%	thousand USD	%	thousand EURO	%
0	1		2		3		4	
DECEMBER 2008	159927	100,0	63426984,9	100,0	29097969,6	100,0	21723640,8	100,0
JANUARY 2009	160541	100,4	66430701,2	104,7	29980573,8	103,0	22408925,4	103,2
FEBRUARY 2009	161223	100,8	68176909,7	107,5	30466384,9	104,7	22792182,8	104,9
MARCH 2009	161970	101,3	69359656,5	109,4	30849578,9	106,0	23093413,8	106,3
APRIL 2009	162615	101,7	70291026,1	110,8	31264030,7	107,4	23411828,9	107,8
MAY 2009	163183	102,0	71126702,3	112,1	31485544,3	108,2	23568705,6	108,5
JUNE 2009	163754	102,4	71957441,4	113,4	31835784,2	109,4	23816746,7	109,6

*Note: column no. 1 shows the number of companies incorporated in the due period. The data concerning the amount of the subscribed capital include the records on the issued capital in companies incorporated in the related period plus the records of increase in capital and minus the subscribed capital in companies being struck-off from the trade register in the same period. The percentage inserted in column No. 1,2,3 and 4 shows the trend compared to the records of December 2007.*

Diagram no. 5

Diagram no. 6

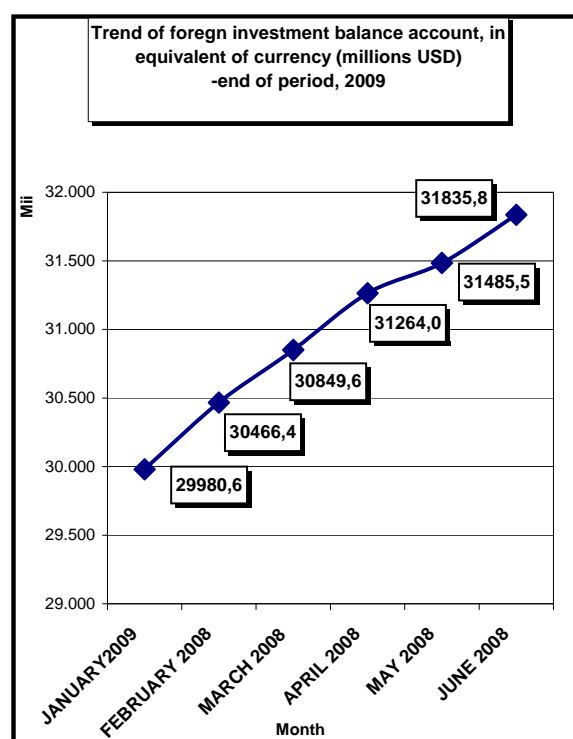
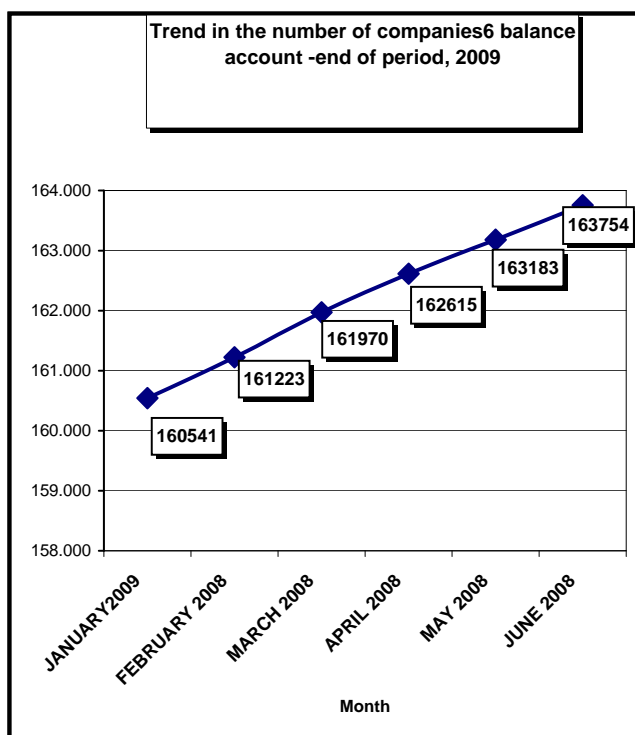


Table no. 4

**Comparative data on new companies by foreign direct investment and the subscribed capital, between January - December 2008 and 2009**

Month	2008				2009					
	New companies		Subscribed capital, in equivalent of currency		New companies		Trend related to 2007 (5/1)	Subscribed capital, in equivalent of currency		Trend related to 2007 (8/3)
	No.	%	thousand USD	%	No.	%	%	thousand USD	%	%
0	1	2	3	4	5	6	7	8	9	10
Jan-December out of which:	6531	100,0	88443,4	100,0	3827	100,0	58,6	36990,1	100,0	41,8
JANUARY	937	14,3	19848,0	22,4	614	16,0	65,5	4256,4	11,5	21,4
FEBRUARY	1234	18,9	9421,7	10,7	682	17,8	55,3	1583,7	4,3	16,8
MARCH	1146	17,5	20592,8	23,3	747	19,5	65,2	1622,9	4,4	7,9
APRIL	1085	16,6	14449,7	16,3	645	16,9	59,4	13861,8	37,5	95,9
MAY	1077	16,5	13077,4	14,8	568	14,8	52,7	10706,7	28,9	81,9
JUNE	1052	16,1	11053,8	12,5	571	14,9	54,3	4958,6	13,4	44,9

Note: columns No. 1 and No. 5 show the number of new companies incorporated in the due period. The data on the subscribed capital include the initial capital subscribed in the related period. Columns No. 2, 4, 6 and 9 show the weight of each month in total period referred to.

Diagram no. 7

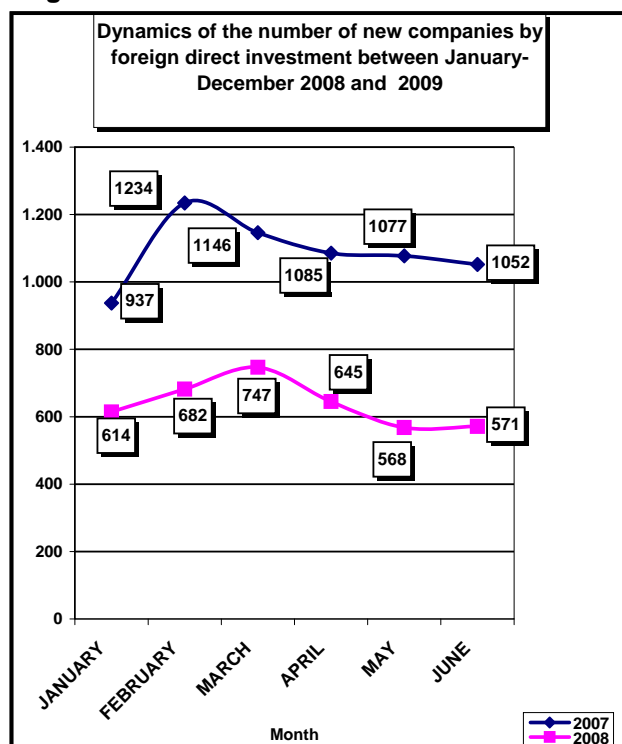


Diagram no. 8

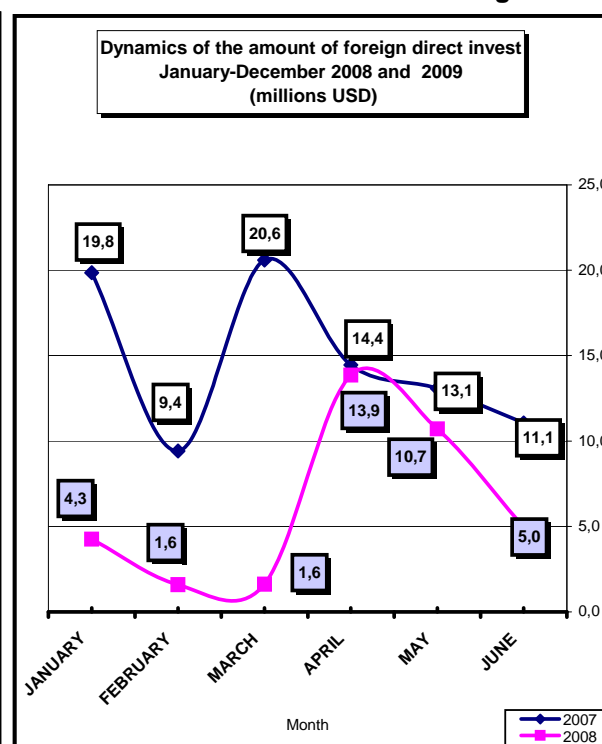


Table no. 5

**Incorporation of companies by foreign direct investment,  
during June 2009**

balance account at 30 Sept 2008	Number of companies		Amount of subscribed capital						Ranking by:	
			Total in local currency		Total in equivalent of currency		Total in equivalent of currency			
	No.	%	mii RON	%	USD	%	EURO	%	*	**
0	1		2		3		4		5	
<b>Total ROMANIA</b>	<b>571</b>	<b>100,0</b>	<b>15396,6</b>	<b>100,0</b>	<b>4958607,0</b>	<b>100,0</b>	<b>3511703,2</b>	<b>100,0</b>	*	**
ALBA	8	1,40	2,9	0,02	946,0	0,02	670,0	0,02	13	22
ARAD	19	3,33	60,4	0,39	20320,0	0,41	14390,7	0,41	6	8
ARGES	10	1,75	4,1	0,03	1383,0	0,03	979,4	0,03	12	20
BACAU	13	2,28	40,7	0,26	13501,0	0,27	9561,5	0,27	10	11
BIHOR	21	3,68	18,9	0,12	6367,0	0,13	4509,1	0,13	5	14
BISTRITA-NASAUD	1	0,18	0,1	***	23,0	***	16,3	***	20	39
BOTOSANI	2	0,35	0,4	***	117,0	***	82,9	***	19	38
BRASOV	15	2,63	205,4	1,33	70776,0	1,43	50123,8	1,43	9	6
BRAILA	6	1,05	621,0	4,03	198481,0	4,00	140565,0	4,00	15	4
BUZAU	2	0,35	0,7	***	243,0	***	172,1	***	19	31
CARAS-SEVERIN	2	0,35	0,4	***	133,0	***	94,2	***	19	36
CALARASI	2	0,35	0,4	***	125,0	***	88,5	***	19	37
CLUJ	44	7,71	61,8	0,40	20501,0	0,41	14518,9	0,41	2	7
CONSTANTA	16	2,80	8,1	0,05	2661,0	0,05	1884,5	0,05	8	16
COVASNA	3	0,53	15,8	0,10	5078,0	0,10	3596,3	0,10	18	15
DAMBOVITA	3	0,53	0,7	***	227,0	***	160,8	***	18	33
DOLJ	13	2,28	35,6	0,23	12037,0	0,24	8524,6	0,24	10	13
GALATI	4	0,70	6,5	0,04	2131,0	0,04	1509,2	0,04	17	18
GIURGIU	3	0,53	1,4	***	420,0	***	297,4	***	18	27
GORJ	2	0,35	0,4	***	134,0	***	94,9	***	19	35
HARGHITA	6	1,05	2,4	0,02	793,0	0,02	561,6	0,02	15	23
HUNEDOARA	5	0,88	0,8	***	276,0	***	195,5	***	16	30
IALOMITA										
IASI	10	1,75	41,7	0,27	13166,0	0,27	9324,2	0,27	12	12
MARAMURES	8	1,40	3,8	0,02	1247,0	0,03	883,1	0,03	13	21
MEHEDINTI	3	0,53	0,9	***	308,0	***	218,1	***	18	29
MURES	12	2,10	5,7	0,04	1860,0	0,04	1317,3	0,04	11	19
NEAMT	4	0,70	1,3	***	429,0	***	303,8	***	17	26
OLT	4	0,70	2,4	0,02	791,0	0,02	560,2	0,02	17	24
PRAHOVA	15	2,63	5170,7	33,58	1683469,0	33,95	1192238,8	33,95	9	2
SALAJ										
SATU MARE	12	2,10	44,5	0,29	14326,0	0,29	10145,7	0,29	11	10
SIBIU	17	2,98	1273,8	8,27	430478,0	8,68	304866,1	8,68	7	3
SUCEAVA	7	1,23	2,1	0,01	698,0	0,01	494,3	0,01	14	25
TELEORMAN	3	0,53	0,7	***	236,0	***	167,1	***	18	32
TIMIS	35	6,13	51,1	0,33	17386,0	0,35	12312,8	0,35	3	9
TULCEA										
VASLUI	3	0,53	1,0	***	330,0	***	233,7	***	18	28
VALCEA	3	0,53	6,7	0,04	2204,0	0,04	1560,9	0,04	18	17
VRANCEA	3	0,53	0,6	***	177,0	***	125,4	***	18	34
MUN. BUCURESTI	209	36,60	7228,3	46,95	2279401,0	45,97	1614279,9	45,97	1	1
ILFOV	23	4,03	472,7	3,07	155428,0	3,13	110074,7	3,13	4	5

\*) number of companies (column 1)

\*\*) capital in equivalent currency (column3)

\*\*\* Less than 0.01%

Table no. 6

**Statutory increase of the issued capital,  
in companies by foreign direct investment  
during June 2009**

balance account at 30 Sept 2008	Number of companies		Amount of subscribed capital						Ranking by:	
			Total in local currency		Total in equivalent of currency		Total in equivalent of currency			
	No.	%	mii RON	%	USD	%	EURO	%		
0	1		2		3		4		5	
<b>Total ROMANIA</b>	<b>870</b>	<b>100,00</b>	<b>924460,9</b>	<b>100,00</b>	<b>402647672,0</b>	<b>100,00</b>	<b>285156522,8</b>	<b>100,00</b>	*	**
ALBA	15	1,72	843,8	0,09	276706,0	0,07	195964,2	0,07	11	20
ARAD	19	2,18	5894,7	0,64	1960586,0	0,49	1388494,0	0,49	9	14
ARGES	12	1,38	94,0	0,01	31047,0	***	21987,6	***	13	28
BACAU	7	0,80	604,7	0,07	199627,0	0,05	141376,6	0,05	17	22
BIHOR	30	3,45	9183,6	0,99	2963699,0	0,74	2098902,2	0,74	6	11
BISTRITA-NASAUD	5	0,57	93,1	0,01	38382,0	***	27182,3	***	19	27
BOTOSANI	1	0,11	9,8	***	3173,0	***	2247,1	***	23	34
BRASOV	34	3,91	160287,8	17,34	52862607,0	13,13	37437487,5	13,13	5	2
BRAILA	7	0,80	2597,8	0,28	992635,0	0,25	702987,7	0,25	17	16
BUZAU	10	1,15	5136,8	0,56	965603,0	0,24	683843,5	0,24	14	17
CARAS-SEVERIN	2	0,23	73,6	***	24675,0	***	17474,9	***	22	31
CALARASI	2	0,23	1,1	***	363,0	***	257,1	***	22	37
CLUJ	38	4,37	96664,0	10,46	35240944,0	8,75	24957762,7	8,75	4	3
CONSTANTA	21	2,41	5032,5	0,54	3142081,0	0,78	2225233,0	0,78	8	9
COVASNA	8	0,92	4165,3	0,45	1279145,0	0,32	905895,1	0,32	16	15
DAMBOVITA	5	0,57	309,7	0,03	104077,0	0,03	73707,7	0,03	19	23
DOLJ	8	0,92	4414,6	0,48	2128400,0	0,53	1507340,5	0,53	16	13
GALATI	10	1,15	158,5	0,02	54113,0	0,01	38323,0	0,01	14	25
GIURGIU	9	1,03	1541,2	0,17	621330,0	0,15	440028,1	0,15	15	18
GORJ	1	0,11	0,0	***	7,0	***	5,0	***	23	41
HARGHITA	10	1,15	96,7	0,01	28746,0	***	20358,0	***	14	30
HUNEDOARA	8	0,92	9495,5	1,03	2501217,0	0,62	1771370,8	0,62	16	12
IALOMITA	3	0,34	33523,5	3,63	10972348,0	2,73	7770656,1	2,73	21	5
IASI	15	1,72	679,2	0,07	260042,0	0,06	184162,7	0,06	11	21
MARAMURES	13	1,49	54,8	***	18322,0	***	12975,7	***	12	32
MEHEDINTI	3	0,34	0,3	***	95,0	***	67,3	***	21	40
MURES	16	1,84	134,3	0,01	53171,0	0,01	37655,9	0,01	10	26
NEAMT	6	0,69	3,0	***	958,0	***	678,5	***	18	36
OLT	5	0,57	89,6	***	29856,0	***	21144,1	***	19	29
PRAHOVA	23	2,64	5407,8	0,58	418019,0	0,10	296042,6	0,10	7	19
SALAJ	4	0,46	60,0	***	-83752,0	-0,02	-59313,5	-0,02	20	42
SATU MARE	9	1,03	160,3	0,02	55419,0	0,01	39247,9	0,01	15	24
SIBIU	15	1,72	13962,7	1,51	4273570,0	1,06	3026557,6	1,06	11	8
SUCEAVA	5	0,57	21048,0	2,28	6594977,0	1,64	4670586,3	1,64	19	6
TELEORMAN	4	0,46	12916,0	1,40	3072672,0	0,76	2176077,3	0,76	20	10
TIMIS	47	5,40	15398,8	1,67	5815685,0	1,44	4118688,9	1,44	3	7
TULCEA	2	0,23	4,1	***	1230,0	***	871,1	***	22	35
VASLUI	3	0,34	0,7	***	231,0	***	163,6	***	21	38
VALCEA	4	0,46	132,9	0,01	4101,0	***	2904,3	***	20	33
VRANCEA	2	0,23	0,5	***	138,0	***	97,7	***	22	39
MUN. BUCURESTI	368	42,30	415739,0	44,97	233569649,0	58,01	165414861,6	58,01	1	1
ILFOV	61	7,01	98446,6	10,65	32171778,0	7,99	22784168,4	7,99	2	4

\*) number of companies (column 1)

\*\*) capital in equivalent currency (column3)

\*\*\* Less than 0.01%

**Note: Empty rows reveal that there are no operation in the current month**

Table no. 7

**Strike-off of companies by foreign direct investment,  
from the trade register, during June 2009**

balance account at 30 Sept 2008	Number of companies		Amount of subscribed capital						Ranking by:	
			Total in local currency		Total in equivalent of currency		Total in equivalent of currency			
	No.	%	mii RON	%	USD	%	EURO	%		
0	1		2		3		4		5	
<b>Total ROMANIA</b>	<b>494</b>	<b>100,0</b>	<b>61280,2</b>	<b>100,0</b>	<b>25213358,0</b>	<b>100,0</b>	<b>17856190,4</b>	<b>100,0</b>	*	**
ALBA	2	0,40	0,3	***	135,0	***	95,6	***	17	32
ARAD	37	7,49	49,8	0,08	25775,0	0,10	18253,9	0,10	2	14
ARGES	2	0,40	5,2	***	1976,0	***	1399,4	***	17	25
BACAU	2	0,40	5,7	***	2656,0	0,01	1881,0	0,01	17	24
BIHOR	11	2,23	22,6	0,04	7569,0	0,03	5360,4	0,03	10	22
BISTRITA-NASAUD	5	1,01	361,8	0,59	133697,0	0,53	94684,7	0,53	14	8
BOTOSANI										
BRASOV	18	3,64	452,5	0,74	193486,0	0,77	137027,5	0,77	7	6
BRAILA	1	0,20	0,2	***	89,0	***	63,0	***	18	34
BUZAU										
CARAS-SEVERIN	8	1,62	122,1	0,20	158808,0	0,63	112468,4	0,63	11	7
CALARASI	1	0,20	0,5	***	160,0	***	113,3	***	18	31
CLUJ	8	1,62	71,1	0,12	21783,0	0,09	15426,8	0,09	11	15
CONSTANTA	5	1,01	97,0	0,16	38243,0	0,15	27083,8	0,15	14	11
COVASNA	8	1,62	34,1	0,06	10736,0	0,04	7603,3	0,04	11	20
DAMBOVITA	3	0,61	28,4	0,05	33705,0	0,13	23870,0	0,13	16	12
DOLJ	5	1,01	41,4	0,07	16262,0	0,06	11516,8	0,06	14	17
GALATI	2	0,40	0,5	***	483,0	***	342,1	***	17	28
GIURGIU	32	6,48	456,2	0,74	241806,0	0,96	171247,9	0,96	3	4
GORJ										
HARGHITA	2	0,40	0,4	***	124,0	***	87,8	***	17	33
HUNEDOARA	15	3,04	2,7	***	1279,0	***	905,8	***	9	26
IALOMITA	5	1,01	1,6	***	565,0	***	400,1	***	14	27
IASI	20	4,05	74,6	0,12	28526,0	0,11	20202,2	0,11	6	13
MARAMURES	4	0,81	7,5	0,01	3102,0	0,01	2196,8	0,01	15	23
MEHEDINTI	1	0,20	0,2	***	79,0	***	55,9	***	18	35
MURES	6	1,21	87,2	0,14	43261,0	0,17	30637,6	0,17	13	10
NEAMT	3	0,61	0,4	***	274,0	***	194,0	***	16	30
OLT	1	0,20	0,2	***	73,0	***	51,7	***	18	36
PRAHOVA	31	6,28	20,9	0,03	8265,0	0,03	5853,3	0,03	4	21
SALAJ	17	3,44	233,1	0,38	97921,0	0,39	69348,0	0,39	8	9
SATU MARE	7	1,42	54,9	0,09	21538,0	0,09	15253,3	0,09	12	16
SIBIU	4	0,81	6013,1	9,81	2562004,0	10,16	1814420,4	10,16	15	2
SUCEAVA										
TELEORMAN	1	0,20	38,5	0,06	14249,0	0,06	10091,2	0,06	18	19
TIMIS	29	5,87	421,0	0,69	196374,0	0,78	139072,8	0,78	5	5
TULCEA	1	0,20	1,0	***	385,0	***	272,7	***	18	29
VASLUI	7	1,42	15,0	0,02	14760,0	0,06	10453,1	0,06	12	18
VALCEA										
VRANCEA										
MUN. BUCURESTI	175	35,43	45925,3	74,94	18967235,0	75,23	13432663,7	75,23	1	1
ILFOV	15	3,04	6633,3	10,82	2365975,0	9,38	1675592,0	9,38	9	3

\*) number of companies (column 1)

\*\*) capital in equivalent currency (column3)

\*\*\* Less than 0.01%

Note: Empty rows reveal that there are no operation in the current month

Table no. 8

**Changes by cession in the issued capital  
of the companies by foreign direct investment,  
during June 2009**

balance account at 30 June 2008	Number of companies		Amount of subscribed capital						Ranking by:	
			Total in local currency		Total in equivalent of currency		Total in equivalent of currency			
	No.	%	mii RON	%	USD	%	EURO	%		
0	1		2		3		4		5	
<b>Total ROMANIA</b>	<b>696</b>	<b>100,0</b>	<b>47838,1</b>	<b>100,0</b>	<b>32153005</b>	<b>100,0</b>	<b>22770873</b>	<b>100,0</b>	*	**
ALBA	11	1,6	71,8	0,15	30984	0,10	21943	0,10	10	37
ARAD	19	2,7	5688,0	11,89	2446123	7,61	1732353	7,61	6	40
ARGES	13	1,9	1688,4	3,53	505344,0	1,57	357886,4	1,57	8	7
BACAU	1	0,1	14,2	0,03	4136	0,01	2929	0,01	19	24
BIHOR	17	2,4	23,2	0,05	11392	0,04	8068	0,04	7	22
BISTRITA-NASAUD	1	0,1	74,0	0,15	32000	0,10	22663	0,10	19	16
BOTOSANI	1	0,1	0,2	0,00	86	0,00	61	0,00	19	35
BRASOV	29	4,2	1147,7	2,40	448454	1,39	317597	1,39	5	8
BRAILA	4	0,6	2451,9	5,13	942879	2,93	667750	2,93	16	5
BUZAU	5	0,7	658,4	1,38	218310	0,68	154608	0,68	15	11
CARAS-SEVERIN	2	0,3	11305,7	23,63	6932589	21,56	4909684	21,56	18	2
CALARASI	2	0,3	1,1 ***		396 ***		280 ***		18	27
CLUJ	31	4,5	96,8	0,20	44905	0,14	31802	0,14	4	13
CONSTANTA	19	2,7	4615,5	9,65	3029639	9,42	2145601	9,42	6	3
COVASNA	3	0,4	3242,6	6,78	1263494	3,93	894811	3,93	17	4
DAMBOVITA	4	0,6	0,7 ***		315 ***		223 ***		16	28
DOLJ	4	0,6	400,2	0,84	169154	0,53	119795	0,53	16	12
GALATI	9	1,3	947,1	1,98	331942	1,03	235083	1,03	12	10
GIURGIU	7	1,0	267,5	0,56	16646	0,05	11789	0,05	13	20
GORJ										
HARGHITA	10	1,4	104,7	0,22	32508	0,10	23022	0,10	11	15
HUNEDOARA	10	1,4	20,8	0,04	37971	0,12	26891	0,12	11	14
IALOMITA	4	0,6	11,3	0,02	4177	0,01	2958	0,01	16	23
IASI	12	1,7	36,8	0,08	12611	0,04	8931	0,04	9	21
MARAMURES	9	1,3	1,2 ***		11685	0,04	8275	0,04	12	36
MEHEDINTI	1	0,1	0,0 ***		13 ***		9 ***		19	32
MURES	12	1,7	227,9	0,48	108921	0,34	77138	0,34	9	39
NEAMT	6	0,9	11,6	0,02	27594	0,09	19542	0,09	14	18
OLT	2	0,3	0,6 ***		228 ***		161 ***		18	29
PRAHOVA	19	2,7	218,7	0,46	43346	0,13	30698	0,13	6	38
SALAJ	3	0,4	0,5 ***		164 ***		116 ***		17	30
SATU MARE	11	1,6	1818,5	3,80	614068	1,91	434885	1,91	10	6
SIBIU	19	2,7	98,1	0,21	30278	0,09	21443	0,09	6	17
SUCEAVA	1	0,1	0,2	0,00	67	0,00	47	0,00	19	34
TELEORMAN										
TIMIS	44	6,3	900,5	1,88	430483	1,34	304870	1,34	3	9
TULCEA	1	0,1	4,0 ***		1193 ***		845 ***		19	26
VASLUI	1	0,1	0,2 ***		78 ***		55 ***		19	31
VALCEA	1	0,1	2,2 ***		4000	0,01	2833	0,01	19	25
VRANCEA	5	0,7	76,1	0,16	26813	0,08	18989	0,08	15	19
MUN. BUCURESTI	275	39,5	53454,4	111,74	29972568	93,22	21226680	93,22	1	1
ILFOV	68	9,8	28896,7	60,41	10352125	32,20	7331412	32,20	2	41

\*) number of companies (column 1)

\*\*) capital in equivalent currency (column 3)

\*\*\* Less than 0,01%

**Note: Empty rows reveal that there are no operation in the current month**

Table no. 9

**Incorporation of companies by foreign direct investment,  
according to the development regions,  
during June 2009**

Development regions	Number of companies		Amount of subscribed capital						Ranking by:	
			Total in local currency		Total in equivalent of currency		Total in equivalent of currency			
	No.	%	mii RON	%	USD	%	EURO	%		
0	1	2		3		4		5		
<b>Total ROMANIA</b>	<b>571</b>	<b>100,0</b>	<b>15396,6</b>	<b>100,0</b>	<b>4958607,0</b>	<b>100,0</b>	<b>3511703,2</b>	<b>100,0</b>	*	**
NORTH-EAST	39	6,8	87,2	0,6	28241,0	0,6	20000,4	0,6	4	7
SOUTH-EAST	31	5,4	636,9	4,1	203693,0	4,1	144256,1	4,1	6	4
SOUTH-MUNTENIA	36	6,3	5178,0	33,6	1685860,0	34,0	1193932,1	34,0	5	2
SOUTH-WEST OLTENIA	25	4,4	46,0	0,3	15474,0	0,3	10958,7	0,3	7	8
WEST	61	10,7	112,7	0,7	38115,0	0,8	26993,2	0,8	3	6
NORTH-WEST	86	15,1	129,0	0,8	42464,0	0,9	30073,2	0,9	2	5
CENTER	61	10,7	1506,0	9,8	509931,0	10,3	361135,0	10,3	3	3
BUCHAREST-ILFOV	232	40,6	7700,9	50,0	2434829,0	49,1	1724354,6	49,1	1	1

Table no. 10

**Statutory increase in the issued capital of companies by  
foreign direct investment, according to the development regions,  
during June 2009**

Development regions	Number of companies		Amount of subscribed capital						Ranking by:	
			Total in local currency		Total in equivalent of currency		Total in equivalent of currency			
	No.	%	mii RON	%	USD	%	EURO	%		
0	1	2		3		4		5		
<b>Total ROMANIA</b>	<b>870</b>	<b>100,0</b>	<b>924460,9</b>	<b>100,0</b>	<b>402647672,0</b>	<b>100,0</b>	<b>285156522,8</b>	<b>100,0</b>	*	**
NORTH-EAST	37	4,3	22345,5	2,4	7059008,0	1,8	4999214,7	1,8	7	6
SOUTH-EAST	52	6,0	12930,3	1,4	5155800,0	1,3	3651356,0	1,3	6	7
SOUTH-MUNTENIA	58	6,7	53793,2	5,8	15219856,0	3,8	10778756,5	3,8	5	4
SOUTH-WEST OLTENIA	21	2,4	4637,4	0,5	2162459,0	0,5	1531461,2	0,5	8	8
WEST	76	8,7	30862,6	3,3	10302163,0	2,6	7296028,7	2,6	4	5
NORTH-WEST	99	11,4	106215,8	11,5	38233014,0	9,5	27076757,4	9,5	2	3
CENTER	98	11,3	179490,6	19,4	58773945,0	14,6	41623918,3	14,6	3	2
BUCHAREST-ILFOV	429	49,3	514185,6	55,6	265741427,0	66,0	188199030,0	66,0	1	1

Table no. 11

**Strike-off of companies by foreign direct investment and the amount  
of their issued capital, according to the development regions,  
during June 2009**

Development regions	Number of companies		Amount of subscribed capital						Ranking by:	
			Total in local currency		Total in equivalent of currency		Total in equivalent of currency			
	No.	%	mii RON	%	USD	%	EURO	%		
0	1	2		3		4		5		
<b>Total ROMANIA</b>	<b>494</b>	<b>100,0</b>	<b>61280,2</b>	<b>100,0</b>	<b>25213358,0</b>	<b>100,0</b>	<b>17856190,4</b>	<b>100,0</b>	*	**
NORTH-EAST	32	6,5	95,6	0,2	46216,0	0,2	32730,3	0,2	6	6
SOUTH-EAST	9	1,8	98,7	0,2	39200,0	0,2	27761,6	0,2	7	7
SOUTH-MUNTENIA	75	15,2	551,4	0,9	300726,0	1,2	212975,2	1,2	3	4
SOUTH-WEST OLTENIA	7	1,4	41,8	0,1	16414,0	0,1	11624,5	0,1	8	8
WEST	89	18,0	595,6	1,0	382236,0	1,5	270700,9	1,5	2	3
NORTH-WEST	52	10,5	751,0	1,2	285610,0	1,1	202270,0	1,1	4	5
CENTER	40	8,1	6587,6	10,8	2809746,0	11,1	1989872,2	11,1	5	2
BUCHAREST-ILFOV	190	38,5	52558,6	85,8	21333210,0	84,6	15108255,7	84,6	1	1

\*) number of companies (column 1)

\*\*) total issued capital, in equivalent of currency (column 3)

\*\*\* Less than 0.01%

Note: Empty rows reveal that there are no operation in the current month

Table no. 12

**Incorporation of companies by foreign direct investment, by continents  
according to the investors' country of origin,  
during June 2009**

Continent	Number of companies		Amount of subscribed capital						Ranking by:	
			Total in local currency		Total in equivalent of currency		Total in equivalent of currency			
	No.	%	mii RON	%	USD	%	EURO	%	*	**
0	1		2		3		4		5	
Total ROMANIA	571	100,0	15396,6	100,0	4958607,0	100,0	3511703,2	100,0	*	**
EUROPE	506	88,6	13403,4	87,1	4298567,0	86,7	3044260,5	86,7	1	1
AFRICA	6	1,1	1,0	***	333,0	***	235,8	***	5	6
NORTH AMERICA	18	3,2	8,4	0,1	2758,0	0,1	1953,2	0,1	3	5
SOUTH AMERICA	9	1,6	1264,4	8,2	427358,0	8,6	302656,5	8,6	4	2
ASIA	60	10,5	518,9	3,4	160382,0	3,2	113583,1	3,2	2	3
OCEANIA	3	0,5	200,5	1,3	69209,0	1,4	49014,1	1,4	6	4

Table no. 13

**Increase in the issued capital of companies by foreign direct investment,  
by continents according to the investors' country of origin,  
during June 2009**

Continent	Number of companies		Amount of subscribed capital						Ranking by:	
			Total in local currency		Total in equivalent of currency		Total in equivalent of currency			
	No.	%	mii RON	%	USD	%	EURO	%	*	**
0	1		2		3		4		5	
Total ROMANIA	870	100,0	924460,9	100,0	402647672,0	100,0	285156522,8	100,0	*	**
EUROPE	701	80,6	881661,3	95,4	388294072,0	96,4	274991251,9	96,4	1	1
AFRICA	24	2,8	418,5	0,0	153287,0	0,0	108558,4	0,0	4	5
NORTH AMERICA	34	3,9	2865,7	0,3	1691971,0	0,4	1198259,9	0,4	3	4
SOUTH AMERICA	18	2,1	26496,3	2,9	8321446,0	2,1	5893277,8	2,1	5	2
ASIA	137	15,7	13018,9	1,4	4186830,0	1,0	2965128,0	1,0	2	3
OCEANIA	1	0,1	0,2	***	66,0	***	46,7	***	6	6

Table no. 14

**Strike-off of companies by foreign direct investment and their issued capital,  
by continents according to the investors' country of origin,  
during June 2009**

Continent	Number of companies		Amount of subscribed capital						Ranking by:	
			Total in local currency		Total in equivalent of currency		Total in equivalent of currency			
	No.	%	mii RON	%	USD	%	EURO	%	*	**
0	1		2		3		4		5	
Total ROMANIA	494	100,0	61280,2	100,0	25213358,0	100,0	17856190,4	100,0	*	**
EUROPE	392	79,4	58427,3	95,3	23467362,0	93,1	16619669,8	93,1	1	1
AFRICA	12	2,4	218,4	0,4	121489,0	0,5	86038,9	0,5	4	4
NORTH AMERICA	19	3,8	66,5	0,1	59281,0	0,2	41983,0	0,2	3	5
SOUTH AMERICA	11	2,2	363,5	0,6	138425,0	0,5	98033,1	0,5	5	3
ASIA	83	16,8	2193,8	3,6	1420744,0	5,6	1006176,0	5,6	2	2
OCEANIA	4	0,8	0,0	***	6057,0	0,024	4289,6	0,0	6	6

\*) number of companies (column 1)

\*\*) total issued capital, in equivalent of currency (column3)

\*\*\* Sub 0,01%

Note: Empty rows reveal that there are no operation in the current month

Table no. 15

**Incorporation of companies by foreign direct investment, by economical groups  
of countries according to the investors' country of origin,  
during June 2009**

Economical groups	Number of companies		Amount of subscribed capital						Ranking by:	
			Total in local currency		Total in equivalent of currency		Total in equivalent of currency			
	No.	%	mii RON	%	USD	%	EURO	%	5	
0	1		2		3		4		5	
<b>Total ROMANIA</b>	<b>571</b>		<b>15396,6</b>		<b>4958607,0</b>		<b>3511703,2</b>		*	**
E.U.	425	74,4	13185,8	85,6	4227699,0	85,3	2994071,6	85,3	2	1
E.A.F.T.A.	6	1,1	100,1	0,7	32598,0	0,7	23086,0	0,7	4	3
O.E.C.D.	456	79,9	12474,7	81,0	4003729,0	80,7	2835455,2	80,7	1	2
C.E.F.T.A.	22	3,9	4,9	0,0	1607,0	0,0	1138,1	0,0	3	4

Table no. 16

**Increase in the issued capital of companies by foreign direct investment,  
by economical groups of countries according to the investors' country of origin,  
during June 2009**

Economical groups	Number of companies		Amount of subscribed capital						Ranking by:	
			Total in local currency		Total in equivalent of currency		Total in equivalent of currency			
	No.	%	mii RON	%	USD	%	EURO	%	5	
0	1		2		3		4		5	
<b>Total ROMANIA</b>	<b>870</b>		<b>924460,9</b>		<b>402647672,0</b>		<b>285156522,8</b>		*	**
E.U.	592	68,0	867381,3	93,8	383841422,0	95,3	271837869,2	95,3	2	1
E.A.F.T.A.	8	0,9	5471,2	0,6	1940077,0	0,5	1373969,5	0,5	4	3
O.E.C.D.	627	72,1	787293,5	85,2	354350686,0	88,0	250952424,4	88,0	1	2
C.E.F.T.A.	28	3,2	1649,7	0,2	529227,0	0,1	374800,5	0,1	3	4

Table no. 17

**Strike-off of companies by foreign direct investment and their issued capital,  
by economical groups of countries according to the investors' country of origin,  
during June 2009**

Economical groups	Number of companies		Amount of subscribed capital						Ranking by:	
			Total in local currency		Total in equivalent of currency		Total in equivalent of currency			
	No.	%	mii RON	%	USD	%	EURO	%	5	
0	1		2		3		4		5	
<b>Total ROMANIA</b>	<b>494</b>		<b>61280,2</b>		<b>25213358,0</b>		<b>17856190,4</b>		*	**
E.U.	320	64,8	57329,7	93,6	23014234,0	91,3	16298762,9	91,3	2	2
E.A.F.T.A.	4	0,8	82,9	0,1	33616,0	0,1	23807,0	0,1	4	4
O.E.C.D.	376	76,1	58134,1	94,9	23373142,0	92,7	16552942,8	92,7	1	1
C.E.F.T.A.	27	5,5	242,2	0,4	88991,0	0,4	63023,7	0,4	3	3

\*) number of companies (column 1)

\*\*) total issued capital, in equivalent of currency (column3)

\*\*\* Less than 0.01%

Note: Each economic group's weight is calculated related to the total Romania.

The weights' sum is different from 100% due to the fact that one country might be part of more than one economical group.

Empty rows reveal that there are no operations recorded in the current month.

Table no. 18

**Classification\* by countries of origin of investors  
in companies by foreign direct investment,  
incorporated during June 2009**

No. crt.	Countries	Number of companies		Amount of subscribed capital					
				Total in local currency		Total in equivalent of currency		Total in equivalent of currency	
		No.	%	mii RON	%	USD	%	EURO	%
0	1	2		3		4		5	
	<b>Total ROMANIA, out of which:</b>	<b>571</b>	<b>100,0</b>	<b>15396,6</b>	<b>100,0</b>	<b>4958607,0</b>	<b>100,0</b>	<b>3511703,2</b>	<b>100,0</b>
1	ITALY	128	22,4	6516,3	42,32	2123441,0	42,82	1503828,5	42,82
2	FRANCE	22	3,9	4523,1	29,38	1407310,0	28,38	996662,0	28,38
3	I.VIRGINE BRIT.	2	0,4	1257,2	8,17	424980,0	8,57	300972,4	8,57
4	CYPRUS	16	2,8	666,7	4,33	212518,0	4,29	150506,0	4,29
5	CHINA	24	4,2	510,1	3,31	157458,0	3,18	111512,3	3,18
6	LITHUANIA	2	0,4	423,1	2,75	138871,0	2,80	98348,9	2,80
7	AUSTRIA	18	3,2	229,8	1,49	70856,0	1,43	50180,5	1,43
8	AUSTRALIA	2	0,4	200,0	1,30	69044,0	1,39	48897,2	1,39
9	SPAIN	36	6,3	195,3	1,27	64014,0	1,29	45334,9	1,29
10	GERMANY	52	9,1	149,4	0,97	52427,0	1,06	37129,0	1,06
11	LUXEMBOURG	3	0,5	135,3	0,88	45391,0	0,92	32146,1	0,92
12	HUNGARY	51	8,9	119,5	0,78	38913,0	0,78	27558,3	0,78
13	TURKEY	35	6,1	110,4	0,72	35933,0	0,72	25447,9	0,72
14	SWITZERLAND	6	1,1	100,1	0,65	32598,0	0,66	23086,0	0,66
15	NETHERLAND	10	1,8	79,8	0,52	25723,0	0,52	18217,1	0,52
16	BULGARIA	19	3,3	46,9	0,30	15139,0	0,31	10721,5	0,31
17	POLAND	3	0,5	42,2	0,27	14066,0	0,28	9961,6	0,28
18	BELGIUM	10	1,8	22,0	0,14	7411,0	0,15	5248,5	0,15
19	SWEDEN	4	0,7	21,8	0,14	6798,0	0,14	4814,4	0,14
20	U.S.A.	18	3,2	8,4	0,05	2758,0	0,06	1953,2	0,06
21	CANADA	6	1,1	7,1	0,05	2338,0	0,05	1655,8	0,05
22	GREECE	15	2,6	4,4	0,03	1446,0	0,03	1024,1	0,03
23	MOLDAVIA	13	2,3	3,6	0,02	1159,0	0,02	820,8	0,02
24	GREAT BRITAIN	18	3,2	3,4	0,02	1122,0	0,02	794,6	0,02
25	ISRAEL	13	2,3	3,1	0,02	1026,0	0,02	726,6	0,02
26	PORTUGAL	3	0,5	2,6	0,02	858,0	0,02	607,6	0,02
27	LEBANON	5	0,9	1,6	0,01	534,0	0,01	378,2	0,01
28	CZECH REPUBLIC	3	0,5	1,4	***	463,0	***	327,9	***
29	IRAQ	5	0,9	1,2	***	397,0	***	281,2	***
30	IRELAND	7	1,2	1,2	***	381,0	***	269,8	***
31	MALTA	1	0,2	1,1	***	344,0	***	243,6	***
32	PAKISTAN	1	0,2	1,0	***	336,0	***	238,0	***
33	SERBIA	4	0,7	0,9	***	309,0	***	218,8	***
34	A.R. OF SYRIA	4	0,7	0,6	***	207,0	***	146,6	***
35	RUSSIA	3	0,5	0,6	***	200,0	***	141,6	***
36	UKRAINE	5	0,9	0,6	***	187,0	***	132,4	***
37	NEW ZEELAND	1	0,2	0,5	***	165,0	***	116,9	***
38	DENMARK	3	0,5	0,5	***	151,0	***	106,9	***
39	SERBIA AND MONTENEGRO	4	0,7	0,5	***	151,0	***	106,9	***
40	SEYCHELLES	2	0,4	0,4	***	134,0	***	94,9	***
41	EGYPT	3	0,5	0,4	***	133,0	***	94,2	***
42	SAUDI ARABIA	2	0,4	0,4	***	128,0	***	90,7	***
43	INDIA	2	0,4	0,3	***	97,0	***	68,7	***
44	BOSNIA HERZEGOVINA	3	0,5	0,2	***	72,0	***	51,0	***
45	WITH OUT CITIZENSHIP	1	0,2	0,2	***	68,0	***	48,2	***
46	SOUTH KOREA	1	0,2	0,2	***	66,0	***	46,7	***
47	MAURITIUS	1	0,2	0,2	***	66,0	***	46,7	***
48	PALESTINA	1	0,2	0,2	***	66,0	***	46,7	***
49	ARMENIA	1	0,2	0,2	***	64,0	***	45,3	***
50	SLOVAKIA	1	0,2	0,2	***	56,0	***	43,0	***

\*) on countries selected upon the amount of the foreign direct investment, in equivalent of currency, ranking by a descending scale (col 4)

\*\*\* Less than 0.01%

Table no. 19

**Classification\* by investors' countries of origin according to the amount  
of the increase in the issued capital, during June 2009**

No. crt.	Countries	Number of companies		Amount of subscribed capital							
				Total in local currency		Total in equivalent of currency		Total in equivalent of currency			
				No.	%	mii RON	%	USD	%	EURO	%
0	1	2		3		4		5			
	<b>Total ROMANIA</b>	<b>870</b>	<b>100,0</b>	<b>924460,9</b>	<b>100,0</b>	<b>402647672,0</b>	<b>100,0</b>	<b>285156522,8</b>	<b>100,0</b>		
1	FRANCE	46	5,29	77792,6	8,41	105918949,0	26,31	75012178,9	26,31		
2	NETHERLAND	38	4,37	195867,0	21,19	81607471,0	20,27	57794703,1	20,27		
3	GERMANY	79	9,08	232682,7	25,17	77015839,0	19,13	54542892,9	19,13		
4	ITALY	157	18,05	108713,9	11,76	36222754,0	9,00	25653084,1	9,00		
5	CYPRUS	61	7,01	96234,9	10,41	36081562,0	8,96	25553091,4	8,96		
6	AUSTRIA	30	3,45	71239,5	7,71	21802397,0	5,41	15440535,6	5,41		
7	SPAIN	40	4,60	36619,7	3,96	13240301,0	3,29	9376828,6	3,29		
8	CANADA	9	1,03	10215,9	1,11	4122756,0	1,02	2919750,6	1,02		
9	LUXEMBOURG	4	0,46	18058,0	1,95	3603564,0	0,89	2552056,9	0,89		
10	MALTA	4	0,46	9510,1	1,03	3128971,0	0,78	2215948,5	0,78		
11	BELIZE	2	0,23	12700,0	1,37	3000319,0	0,75	2124836,7	0,75		
12	CHINA	46	5,29	8965,7	0,97	2637229,0	0,65	1867695,0	0,65		
13	BELGIUM	9	1,03	7678,7	0,83	2569776,0	0,64	1819924,6	0,64		
14	TURKEY	64	7,36	7112,8	0,77	1967833,0	0,49	1393626,4	0,49		
15	U.S.A.	34	3,91	2865,7	0,31	1691971,0	0,42	1198259,9	0,42		
16	HUNGARY	46	5,29	3465,3	0,37	1157769,0	0,29	819936,2	0,29		
17	GREAT BRITAIN	15	1,72	3143,0	0,34	1047920,0	0,26	742140,7	0,26		
18	SWITZERLAND	7	0,80	3021,2	0,33	997766,0	0,25	706621,5	0,25		
19	NORWAY	1	0,11	2450,0	0,27	942311,0	0,23	667348,0	0,23		
20	IRELAND	6	0,69	2100,5	0,23	706716,0	0,18	500498,8	0,18		
21	SLOVAKIA	2	0,23	1804,4	0,20	622623,0	0,15	440943,8	0,15		
22	I.VIRGINE BRIT.	3	0,34	1667,6	0,18	558608,0	0,14	395608,2	0,14		
23	IRAQ	23	2,64	1175,0	0,13	554675,0	0,14	392822,8	0,14		
24	CAYMAN ISLANDS	1	0,11	1598,1	0,17	535382,0	0,13	379159,4	0,13		
25	LEBANON	7	0,80	1108,6	0,12	360167,0	0,09	255071,6	0,09		
26	ISRAEL	39	4,48	945,5	0,10	331331,0	0,08	234649,8	0,08		
27	MOLDAVIA	23	2,64	1036,5	0,11	326712,0	0,08	231378,6	0,08		
28	A.R. OF SYRIA	9	1,03	590,7	0,06	218236,0	0,05	154555,5	0,05		
29	CROATIA	2	0,23	604,2	0,07	199491,0	0,05	141280,2	0,05		
30	EGYPT	22	2,53	416,4	0,05	152597,0	0,04	108069,7	0,04		
31	BRAZIL	1	0,11	279,0	0,03	92234,0	0,02	65320,4	0,02		
32	VIETNAM	3	0,34	131,4	0,01	52842,0	0,01	37422,9	0,01		
33	INDIA	2	0,23	55,0	***	18049,0	***	12782,4	***		
34	IRAN	3	0,34	45,2	***	13700,0	***	9702,4	***		
35	PANAMA	1	0,11	35,2	***	11982,0	***	8485,7	***		
36	DENMARK	7	0,80	33,8	***	11156,0	***	7900,7	***		
37	ANDORRA	1	0,11	25,5	***	8509,0	***	6026,1	***		
38	MONACO	2	0,23	19,7	***	6603,0	***	4676,3	***		
39	POLAND	2	0,23	16,0	***	5234,0	***	3706,7	***		
40	SWEDEN	6	0,69	14,3	***	4818,0	***	3412,1	***		
41	SERBIA	3	0,34	8,9	***	3024,0	***	2141,6	***		
42	BULGARIA	15	1,72	8,5	***	2866,0	***	2029,7	***		
43	ZIMBABWE	1	0,11	2,0	***	657,0	***	465,3	***		
44	RUSSIA	4	0,46	0,9	***	301,0	***	213,2	***		
45	HONG KONG	1	0,11	0,9	***	283,0	***	200,4	***		
46	PALESTINA	1	0,11	0,5	***	170,0	***	120,4	***		
47	VENEZUELA	1	0,11	0,5	***	165,0	***	116,9	***		
48	JORDAN	3	0,34	0,5	***	148,0	***	104,8	***		
49	UKRAINE	2	0,23	0,3	***	100,0	***	70,8	***		
50	FINLAND	1	0,11	0,2	***	67,0	***	47,4	***		

\*) on countries selected upon the amount of the foreign direct investment, in equivalent of currency, ranking by a descending scale (col 4)

\*\*\* Less than 0,01%

**Classification of the top 40 companies by foreign direct investment  
in the total subscribed capital, in equivalent of currency,  
during June 2009**

No. crt.	Companies	County	Country of origin of the majority investor	Amount of subscribed capital		
				Total in local currency	Total in equivalent of currency	Total in equivalent of currency
				thousand RON	thousand USD	thousand EURO
0	1	2	3	4	5	6
1	BANCA C.R. FIRENZE ROMANIA SA	BUCURESTI	ITALIA	62074,1	20518,3	14531,1
2	STAR FOODS E.M. SRL	ILFOV	CIPRU	57786,6	18354,8	12998,9
3	UNICREDIT CONSUMER FINANCING IFN SA	BUCURESTI	ITALIA	43000,0	14109,0	9992,0
4	ANTALIS SA	BUCURESTI	FRANTA	42354,4	13218,5	9361,4
5	RALFI IFN SA	CLUJ	OLANDA	37521,0	12646,5	8956,3
6	EXPUR SA	IALOMITA	OLANDA	33512,8	10968,4	7767,8
7	CARREFOUR PROPERTY ROMANIA SRL	BUCURESTI	OLANDA	26353,0	8866,8	6279,5
8	KWS SEMINTE SRL	BUCURESTI	GERMANIA	26766,0	8031,6	5688,0
9	TALIA DEVELOPMENTS ONE SRL	BUCURESTI	SPANIA	20692,5	8008,7	5671,8
10	ARMONIE DEVELOPMENTS SRL	BUCURESTI	SPANIA	23772,0	7821,4	5539,1
11	DOGAN MEDIA INTERNATIONAL SA	BUCURESTI	OLANDA	21250,0	6864,0	4861,1
12	EGGER ROMANIA SRL	SUCEAVA	AUSTRIA	20631,5	6594,5	4670,2
13	SDR REAL ESTATE HOLDING SRL	BUCURESTI	GERMANIA	20808,0	6227,0	4410,0
14	AEGON ASIGURARI DE VIATA SA	CLUJ	OLANDA	18100,0	6088,5	4311,9
15	LIBRA BANK SA	BUCURESTI	CIPRU	17654,7	5784,4	4096,6
16	MULLER DAIRY RO SRL	ILFOV	OLANDA	17010,8	5613,2	3975,3
17	SEEDS PROCESING SRL	TELEORMAN	BELIZE	12699,0	4198,2	2973,1
18	COFIDIS - INSTITUTIE FINANCIARA NEBANCARA SA	BUCURESTI	FRANTA	12600,0	4139,3	2931,5
19	SIGNAL IDUNA ASIGURARI DE VIATA SA	BUCURESTI	GERMANIA	13175,4	4104,6	2906,9
20	SCA PACKAGING ROMANIA SRL	TIMIS	OLANDA	12000,0	4010,3	2840,1
21	EUROFOAM SRL	SIBIU	AUSTRIA	12935,7	3907,9	2767,6
22	CERTASIG - SOCIETATE DE ASIGURARE SI REASIGURARE SA	BUCURESTI	LUXEMBURG	10629,6	3274,6	2319,0
23	SODO MIGLIORI ROMANIA SRL	BUCURESTI	ITALIA	8637,0	2893,1	2048,9
24	SAINT GOBAIN WEBER ROMANIA SRL	CLUJ	FRANTA	8000,0	2590,2	1834,4
25	PURATOS PROD SRL	ILFOV	BELGIA	7500,0	2542,6	1800,7
26	GRANIT INTERNATIONAL SRL	HUNEDOARA	AUSTRIA	7434,7	2342,9	1659,2
27	SAPIENT SRL	BIHOR	AUSTRIA	6200,0	1956,3	1385,5
28	AUTOGRUPM RO SRL	ARAD	ITALIA	4228,4	1411,0	999,3
29	SILOFAB SRL	PRAHOVA	ITALIA	4300,0	1400,0	991,5
30	SOUFFLET AGRO ROMANIA SRL	BUCURESTI	FRANTA	4200,0	1300,0	920,7
31	ROMCARBON SA	BUZAU	I.VIRGINE BRIT.	3713,6	1244,1	881,1
32	MONDI PACKAGING BUCHAREST SRL	ILFOV	OLANDA	3773,3	1225,3	867,8
33	DICO ROMANIA SRL	DOLJ	ITALIA	3235,0	1069,5	757,4
34	FE AGRO IMOBILIARE SRL	BUCURESTI	AUSTRIA	3056,2	1019,6	722,1
35	DUNAREA FARMS SRL	BUCURESTI	IRLANDA BRITANIE	3000,0	1002,6	710,0
36	KEFALONIA SRL	BUCURESTI	ELVETIA	2716,0	897,1	635,3
37	ITALROM LEATHER SRL	HUNEDOARA	ITALIA	1998,0	660,6	467,8
38	VERDUYN-BEHEER GROUP SRL	BUCURESTI	OLANDA	1854,0	654,0	463,2
39	ALINE DISTRIBUTION GRUP SRL	ILFOV	S.U.A.	1601,1	535,1	378,9
40	PRESTIGE MOB SRL	ILFOV	TURCIA	1349,8	455,0	322,2

Table no. 21

**Number of registered companies with foreign investment capital  
and amount of subscribed capital,  
between 1991 and 2007**

balance account at 30 Sept 2004	Number of companies		Amount of subscribed capital					
			Total on ROL		Total on currency		Total on currency	
	No.	%	thousand RON	%	thousands USD	%	thousands EURO	%
0	1		2		3		4	
<b>1991 - 2006, out of which:</b>	<b>147663</b>	<b>89,4</b>	<b>48392059,2</b>	<b>84,0</b>	<b>23173116,8</b>	<b>12,6</b>	<b>17739208,0</b>	<b>86,5</b>
<b>1991</b>	5499	3,7	258165,5	0,5	1058260,8	4,6	817975,6	4,6
<b>1992</b>	11765	8,0	65153,0	0,1	573271,2	2,5	443106,2	2,5
<b>1993</b>	10583	7,2	92793,2	0,2	417844,8	1,8	322970,3	1,8
<b>1994</b>	11053	7,5	230535,9	0,5	881673,3	3,8	681483,5	3,8
<b>1995</b>	3400	2,3	67893,9	0,1	237717,0	1,0	183741,8	1,0
<b>1996</b>	3630	2,5	229256,3	0,5	573594,2	2,5	443355,8	2,5
<b>1997</b>	5251	3,6	232229,8	0,5	359912,8	1,6	278192,2	1,6
<b>1998</b>	8801	6,0	728612,4	1,5	755475,3	3,3	583939,6	3,3
<b>1999</b>	7383	5,0	1214843,7	2,5	944365,3	4,1	729940,9	4,1
<b>2000</b>	8567	5,8	1870247,9	3,9	839143,8	3,6	648610,6	3,7
<b>2001</b>	7175	4,9	4820820,8	10,0	1540810,8	6,6	1190959,4	6,7
<b>2002</b>	7518	5,1	3541822,9	7,3	1078746,2	4,7	833809,6	4,7
<b>2003</b>	6609	4,5	4441402,8	9,2	1288885,0	5,6	996235,1	5,6
<b>2004</b>	10167	6,9	9040577,5	18,7	3032218,4	13,1	2343732,9	13,2
<b>2005</b>	11719	7,9	7173157,1	14,8	3149681,6	13,6	2434525,4	13,7
<b>2006</b>	12823	8,7	6646972,2	13,7	3127314,6	13,5	2417237,0	13,6
<b>2007</b>	15720	10,6	7737574,2	16,0	3314201,6	14,3	2389392,2	13,5
<b>2008</b>	12264	8,3	15034925,8	31,1	5924852,8	25,6	3984432,8	22,5

*Note: column no. 1 representing number of new registered from that time. The amount of subscribed capital is composed by initial subscribed capital added with any increase of capital and decreased with the subscribed capital of erased companies*

Diagram no. 9

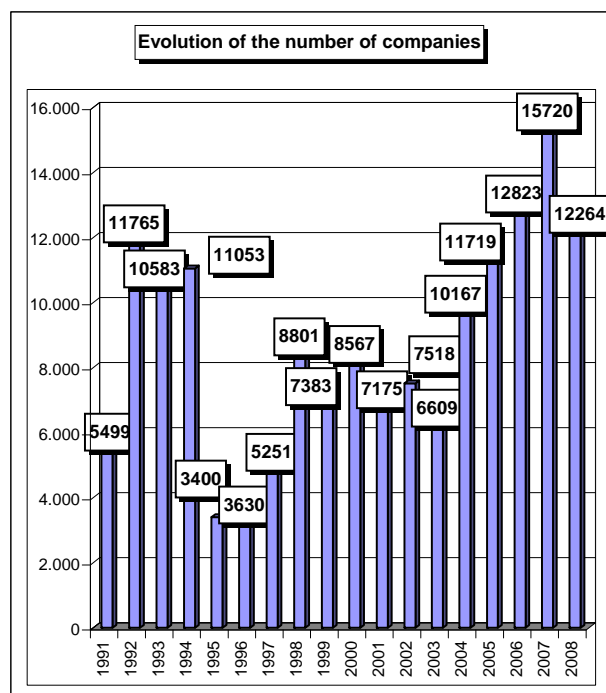


Diagram no. 10

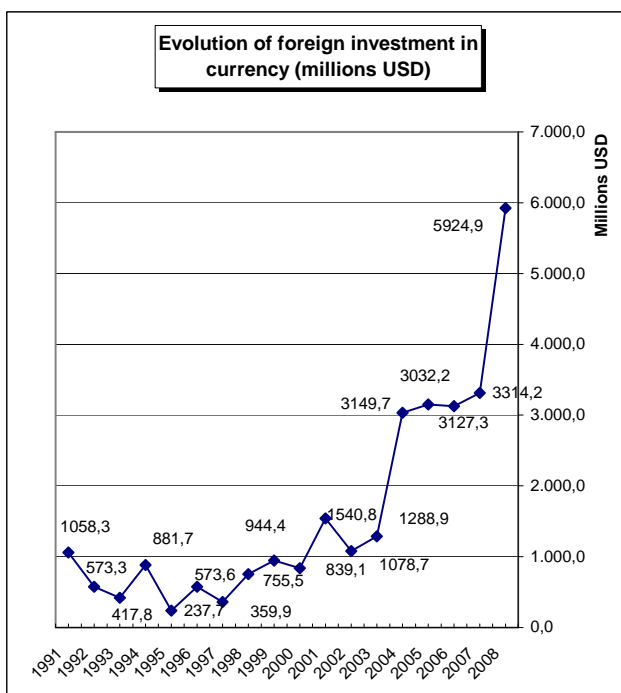


Table no. 22

**Number of registered companies, with foreign capital investment  
and the value of the invested capital,  
- balance account at 31 December 2008**

balance account at 31 December	Number of companies		Amount of subscribed capital						Order by:	
			Total on ROL		Total on currency		Total on currency			
	No.	%	thousand RON	%	thousands USD	%	thousands EUR	%		
0	1		2		3		4		5	
<b>Total ROMANIA</b>	<b>153118</b>	<b>100,0</b>	<b>95287767,6</b>	<b>100,0</b>	<b>26557877,1</b>	<b>100,0</b>	<b>21731476,5</b>	<b>100,0</b>	*	**
ALBA	1496	1,0	308122,4	0,3	123764,6	0,5	96095,2	0,4	19	26
ARAD	4644	3,0	820951,4	0,9	323703,4	1,2	251334,6	1,2	7	14
ARGES	1658	1,1	7210741,1	7,6	1157512,3	4,4	898732,9	4,1	17	3
BACAU	1180	0,8	2268207,2	2,4	818834,3	3,1	635771,5	2,9	23	6
BIHOR	5425	3,5	990091,5	1,0	393078,0	1,5	305199,4	1,4	4	12
BISTRITA-NASAUD	1021	0,7	125196,0	0,1	42243,8	0,2	32799,6	0,2	25	37
BOTOSANI	457	0,3	66139,5	0,1	23344,2	0,1	18125,3	0,1	36	42
BRASOV	4751	3,1	1373627,0	1,4	520674,9	2,0	404270,1	1,9	6	10
BRAILA	757	0,5	180027,3	0,2	83355,6	0,3	64720,2	0,3	29	31
BUZAU	909	0,6	297359,0	0,3	94410,5	0,4	73303,6	0,3		29
CARAS-SEVERIN	1269	0,8	448134,2	0,5	176188,4	0,7	136798,8	0,6	21	21
CALARASI	427	0,3	598645,5	0,6	305437,9	1,2	237152,6	1,1	38	15
CLUJ	6190	4,0	1401744,5	1,5	633791,7	2,4	492098,0	2,3	3	9
CONSTANTA	4973	3,2	1675925,0	1,8	638446,3	2,4	495711,9	2,3	5	8
COVASNA	950	0,6	134806,6	0,1	69184,9	0,3	53717,6	0,2	27	32
DAMBOVITA	976	0,6	575222,8	0,6	212893,6	0,8	165298,0	0,8	26	18
DOLJ	1848	1,2	528760,4	0,6	221044,2	0,8	171626,4	0,8	16	17
GALATI	1255	0,8	2391489,4	2,5	786845,5	3,0	610934,2	2,8	22	7
GIURGIU	536	0,4	116472,8	0,1	40763,1	0,2	31649,9	0,1	34	38
GORJ	363	0,2	65517,8	0,1	23374,3	0,1	18148,6	0,1	41	41
HARGHITA	2467	1,6	199706,9	0,2	110887,4	0,4	86096,9	0,4	12	28
HUNEDOARA	1649	1,1	369263,7	0,4	175909,2	0,7	136582,0	0,6	18	22
IALOMITA	433	0,3	83103,2	0,1	36844,1	0,1	28607,0	0,1	37	40
IASI	2234	1,5	374526,2	0,4	189430,7	0,7	147080,6	0,7	13	20
MARAMURES	2069	1,4	310097,4	0,3	119144,3	0,4	92507,8	0,4	14	27
MEHEDINTI	690	0,5	156260,0	0,2	66033,9	0,2	51271,0	0,2	30	33
MURES	3197	2,1	2415924,4	2,5	978143,2	3,7	759464,4	3,5	10	4
NEAMT	1156	0,8	256353,8	0,3	135998,0	0,5	105593,6	0,5	24	24
OLT	535	0,3	583274,7	0,6	206982,6	0,8	160708,5	0,7	35	19
PRAHOVA	2805	1,8	1137429,4	1,2	519834,9	2,0	403617,9	1,9	11	11
SALAJ	674	0,4	401225,1	0,4	136200,2	0,5	105750,6	0,5	31	23
SATU MARE	2017	1,3	296738,5	0,3	130978,4	0,5	101696,2	0,5	15	25
SIBIU	3277	2,1	515483,6	0,5	249345,7	0,9	193600,7	0,9	9	16
SUCEAVA	1316	0,9	904960,6	0,9	377166,7	1,4	292845,4	1,3	20	13
TELEORMAN	371	0,2	104211,0	0,1	45676,9	0,2	35465,2	0,2	40	36
TIMIS	10476	6,8	2123786,1	2,2	956173,9	3,6	742406,7	3,4	2	5
TULCEA	389	0,3	173681,9	0,2	62752,4	0,2	48723,1	0,2	39	34
VASLUI	304	0,2	110523,0	0,1	40662,4	0,2	31571,7	0,1	42	39
VALCEA	626	0,4	160114,7	0,2	91224,4	0,3	70829,8	0,3	32	30
VRANCEA	560	0,4	96758,6	0,1	54020,9	0,2	41943,7	0,2	33	35
MUN. BUCURESTI	70204	45,8	60139110,9	63,1	12710299,7	47,9	10979735,1	50,5	1	1
ILFOV	4584	3,0	2798052,6	2,9	2475275,8	9,3	1921890,3	8,8	8	2

\*) number of companies

\*\*) capital in equivalent currency

Table no. 23

**Number of registered companies, with foreign capital investment  
and the value of the invested capital, on economic development areas,  
- balance account at 31 December 2008**

Economic development areas	Number of companies		Amount of subscribed capital						Order by:	
			Total on ROL		Total on currency		Total on currency			
	No.	%	thousand RON	%	housands US\$	%	housands EURC	%		
<b>Total ROMANIA</b>	<b>153118</b>		<b>95287767,6</b>		<b>26557877,1</b>		<b>21760896,0</b>		*	**
NORTH-EAST	6647	4,3	3980710,4	4,2	1585436,4	6,0	1230988,1	5,7	7	7
SOUTH-EAST	8843	5,8	4815241,2	5,1	1719831,1	6,0	1335336,8	6,1	5	3
SOUTH-MUNTENIA	7206	4,7	9825825,6	10,3	2318962,7	6,5	1800523,4	8,3	6	2
SOUTH-WEST OLTENIA	4062	2,7	1493927,6	1,6	608659,3	8,7	472584,3	2,2	8	8
WEST	18038	11,8	3762135,3	3,9	1631974,9	2,3	1267122,1	5,8	2	4
NORTH-WEST	17396	11,4	3525093,0	3,7	1455436,4	6,1	1130051,5	5,2	3	5
CENTER	16138	10,5	4947670,8	5,2	2052000,8	5,5	1593244,9	7,3	4	6
BUCHAREST-ILFOV	74788	48,8	62937163,5	66,0	15185575,5	7,7	12931044,9	59,4	1	1

Table no. 24

**Number of registered companies, with foreign capital investment  
and the value of the invested capital, on continents  
- balance account at 31 December 2008**

Continent	Number of companies		Amount of subscribed capital						Order by:	
			Total on ROL		Total on currency		Total on currency			
	No.	%	thousand RON	%	housands US\$	%	housands EURC	%		
<b>0</b>	<b>1</b>		<b>2</b>		<b>3</b>		<b>4</b>		<b>5</b>	
<b>Total ROMANIA</b>	<b>159125</b>	<b>100,0</b>	<b>92864256,4</b>	<b>100,0</b>	<b>25780475,3</b>	<b>100,0</b>	<b>39335528,0</b>		*	**
EUROPE	110892	69,7	88347820,6	95,1	23407373,8	90,8	18174300,4	46,2	4	6
AFRICA	2434	1,5	64224,9	0,1	43192,2	0,2	33535,9	0,1	3	5
NORTH AMERICA	5755	3,6	1585842,7	1,7	1029221,1	4,0	799123,1	2,0	5	4
SOUTH AMERICA	2366	1,5	688488,2	0,7	309710,3	1,2	240469,8	0,6	2	2
ASIA	37677	23,7	2177879,5	2,3	990977,7	3,8	769429,6	2,0	6	3

Table no. 25

**Number of registered companies, with foreign capital investment  
and the value of the invested capital, on economic groups,  
- balance account at 31 December 2008**

Economic groups	Number of companies		Amount of subscribed capital						Order by:	
			Total on ROL		Total on currency		Total on currency			
	No.	%	thousand RON	%	housands US\$	%	housands EURC	%		
<b>0</b>	<b>1</b>		<b>2</b>		<b>3</b>		<b>4</b>		<b>5</b>	
<b>Total ROMANIA</b>	<b>153118</b>		<b>95287767,6</b>		<b>26557877,1</b>		<b>39335528,0</b>		*	**
U.E.	91963	60,1	53235796,4	55,9	24317681,2	91,6	18012058,4	45,8	2	2
A.E.L.S.	2489	1,6	1910261,8	2,0	827524,7	3,1	642519,0	1,6	4	3
O.E.C.D.	107789	70,4	55662614,5	58,4	24164288,9	91,0	18761995,6	47,7	1	1
C.E.F.T.A.	3658	2,4	84351,8	0,1	37897,3	0,1	29424,8	0,1	3	4

Note: Each economic group's weight is calculated in total Romania.

The weights sum is different from 100% because each country may be part of one or many economic groups

\*) number of companies

\*\*) capital in equivalent currency

\*\*\* Less than 0.01%

Percentage of companies with foreign investment,  
- balance account at 31 December 2008, on fields of activity\*

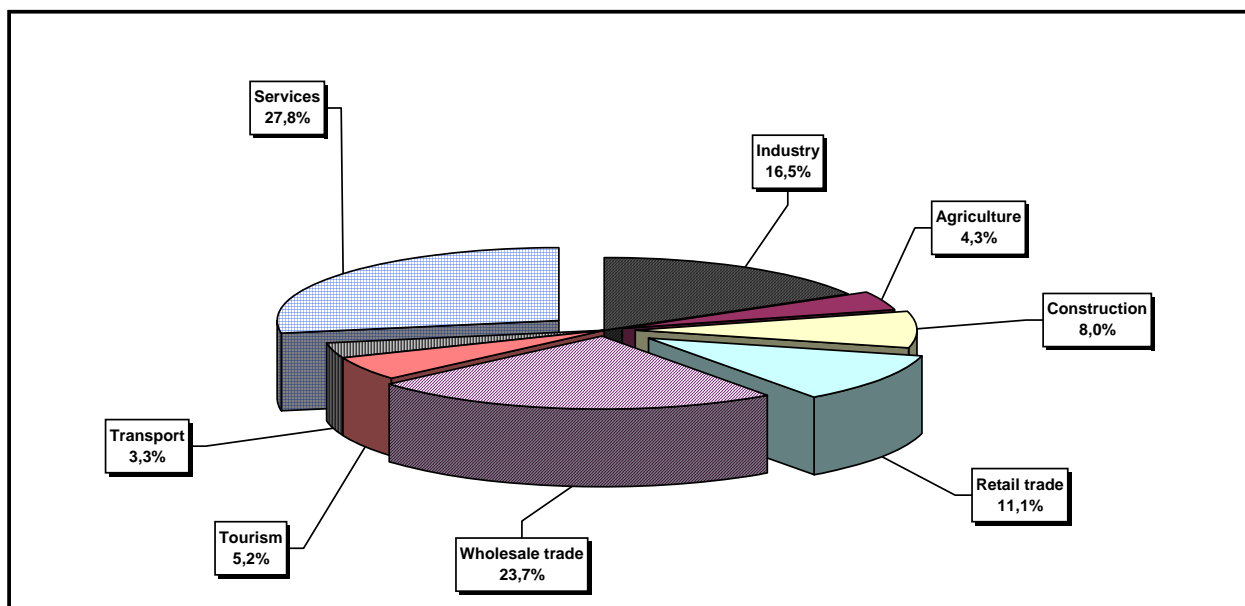
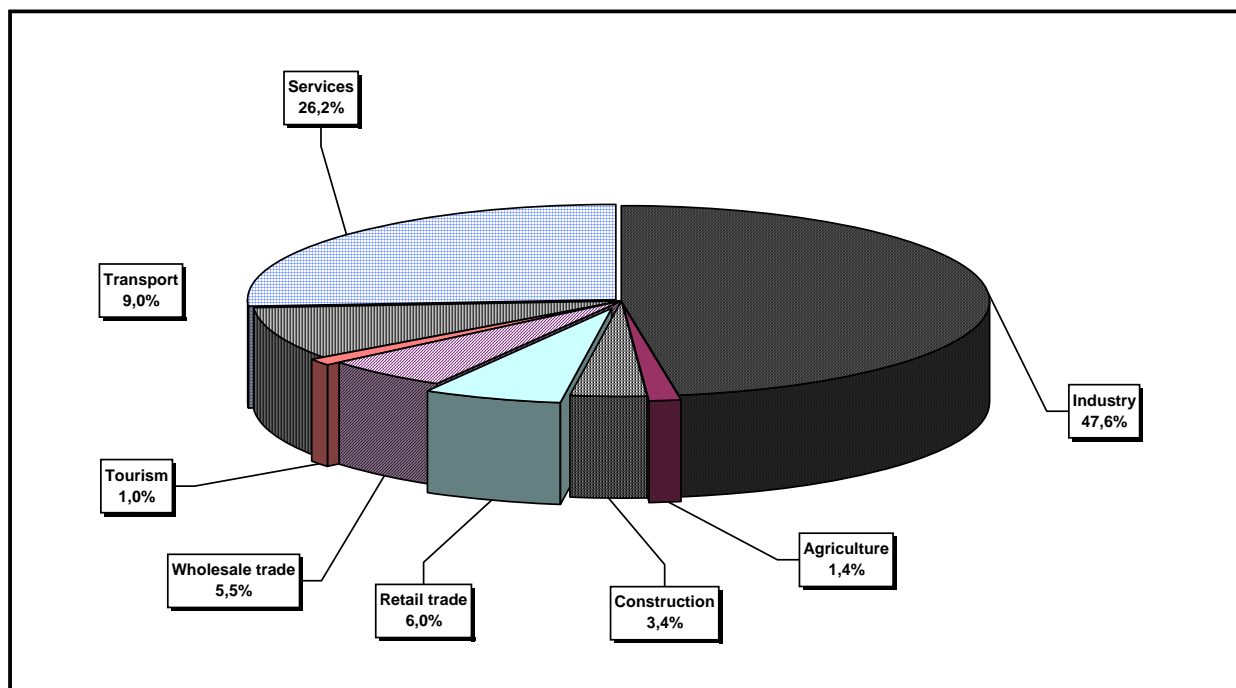


Diagram no. 12

Percentage of foreign currency invested capital\*\* in companies  
with foreign investment, - balance account at 31 December 2008, on fields of activity



\*) Calculated on main activity

\*\*) Calculated on the total amount in currency

**Top 50 countries classification on foreign  
investment capital registered  
- balance account at 31 December 2008**

No. crt.	Countries	Number of companies		Amount of subscribed capital							
				Total on RON		Total on currency		Total on currency			
		No.	%	thousand RON	%	thousands USD	%	thousands EURO	%		
0	1	2		3		4		5			
<b>Total ROMANIA, out of which:</b>		<b>159927</b>	<b>100,00</b>	<b>63426984,9</b>	<b>100,00</b>	<b>29097969,6</b>	<b>100,00</b>	<b>21723640,8</b>		<b>100,00</b>	
1	NETHERLAND	3446	2,15	13664014,5	21,54	4953038,2	17,02	3845711,4		17,70	
2	AUSTRIA	5365	3,35	8369105,5	13,19	3259613,4	11,20	2530877,4		11,65	
3	GERMANY	16623	10,39	7615278,6	12,01	3190211,0	10,96	2476990,9		11,40	
4	FRANCE	5859	3,66	5751440,2	9,07	2483038,7	8,53	1927917,7		8,87	
5	ITALY	4261	2,66	3129792,5	4,93	1534407,2	5,27	1191367,2		5,48	
6	U.S.A.	26934	16,84	3044689,9	4,80	1287015,7	4,42	999283,9		4,60	
7	GREAT BRITAIN	5755	3,60	1585842,7	2,50	1029221,1	3,54	799123,1		3,68	
8	CYPRUS	3440	2,15	2221055,0	3,50	973876,6	3,35	756151,7		3,48	
9	ANTILELE OLANDEZE	3937	2,46	2183414,0	3,44	922662,7	3,17	716387,4		3,30	
10	GREECE	4487	2,81	2176461,0	3,43	885342,2	3,04	687410,6		3,16	
11	TURKEY	606	0,38	33234546,3	52,40	688768,8	2,37	534784,1			
12	SWITZERLAND	15		2162365,5	3,41	678471,3	2,33	526788,8		2,42	
13	I.VIRGINE BRIT.	1981	1,24	1407729,7	2,22	659695,8	2,27	512210,8		2,36	
14	SPAIN	10836	6,78	1027868,8	1,62	624664,7	2,15	485011,5		2,23	
15	HUNGARY	9393	5,87	1037023,5	1,63	501188,8	1,72	389140,5		1,79	
16	LUXEMBOURG	9432	5,90	789476,8	1,24	311581,6	1,07	241922,8		1,11	
17	CHINA	2203	1,38	524714,5	0,83	236915,5	0,81	183949,4		0,85	
18	SOUTH KOREA	1078	0,67	514006,3	0,81	191636,7	0,66	148793,4		0,68	
19	SWEDEN	440	0,28	464697,1	0,73	182694,6	0,63	141850,5		0,65	
20	CANADA	219	0,14	373584,1	0,59	143698,9	0,49	111572,8		0,51	
21	JAPAN	287	0,18	333145,0	0,53	137487,7	0,47	106750,2		0,49	
22	BELGIUM	3440	2,15	266780,1	0,42	137220,7	0,47	106542,9		0,49	
23	WITH OUT CITIZENSHIP	336	0,21	340944,8	0,54	126521,8	0,43	98235,9		0,45	
24	LIECHTENSTEIN	5753	3,60	338989,3	0,53	122563,1	0,42	95162,3		0,44	
25	POLAND	1451	0,91	200719,2	0,32	105480,9	0,36	81899,1		0,38	
26	A.R. OF SYRIA	590	0,37	248102,5	0,39	97609,6	0,34	75787,5		0,35	
27	LEBANON	57	0,04	250169,6	0,39	86222,6	0,30	66946,2		0,31	
28	MARSHALL ISLANDS	113	0,07	204517,9	0,32	82646,4	0,28	64169,5		0,30	
29	ISRAEL	24	0,02	904,3		75490,6	0,26	58613,6		0,27	
30	IRAQ	494	0,31	326516,0	0,51	73973,0	0,25	57435,2		0,26	
31	DENMARK	150	0,09	47191,2	0,07	68717,9	0,24	53355,0		0,25	
32	IRELAND	5267	3,29	87681,8	0,14	62807,7	0,22	48766,1		0,22	
33	NORWAY	191	0,12	79061,9	0,12	56163,4	0,19	43607,2		0,20	
34	PANAMA	271	0,17	138275,5	0,22	52903,5	0,18	41076,1		0,19	
35	MOLDAVIA	15		154104,2	0,24	48218,9	0,17	37438,8		0,17	
36	IRAN	5469	3,42	81759,6	0,13	45430,1	0,16	35273,5		0,16	
37	SLOVENIA	3257	2,04	67276,5	0,11	31479,8	0,11	24442,0		0,11	
38	JORDAN	684	0,43	38744,2	0,06	31326,9	0,11	24323,3		0,11	
39	PORTUGAL	609	0,38	52899,8	0,08	27744,9	0,10	21542,1		0,10	
40	ARGENTINA	992	0,62	58859,4	0,09	22972,8	0,08	17836,9		0,08	
41	FINLAND	2542	1,59	34998,8	0,06	22674,5	0,08	17605,3		0,08	
42	GIBRALTAR	3059	1,91	39160,9	0,06	22273,4	0,08	17293,8		0,08	
43	ICELAND	138	0,09	64712,1	0,10	21684,9	0,07	16836,9		0,08	
44	LITHUANIA	154	0,10	20165,9	0,03	19284,5	0,07	14973,1		0,07	
45	EGYPT	1305	0,82	38765,2	0,06	18140,6	0,06	14085,0		0,06	
46	AUSTRALIA	42	0,03	26987,3	0,04	17547,9	0,06	13624,8		0,06	
47	NEW ZEELAND	39	0,02	66797,8	0,11	13869,7	0,05	10768,9		0,05	
48	THAILANDA	28	0,02	30845,6	0,05	13429,9	0,05	10427,4		0,05	
49	UNITED ARAB EMIRATES	34	0,02	35823,6	0,06	11253,7	0,04	8737,8		0,04	
50	CZECH REPUBLIC	17	0,01	17671,4	0,03	11071,5	0,04	8596,3		0,04	

\*\*\* Less than 0.01%