



MINISTRY OF JUSTICE

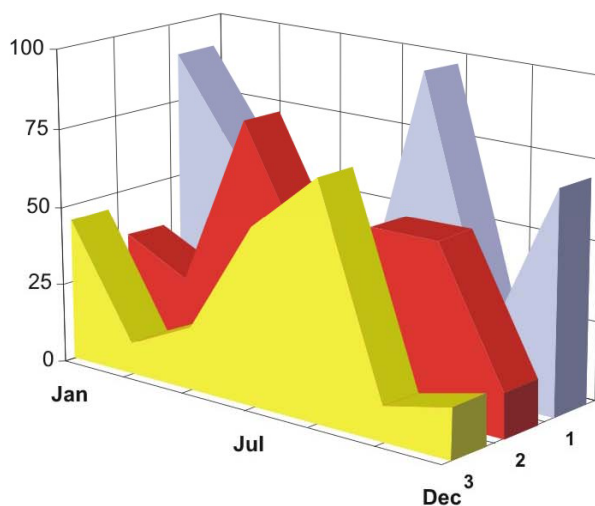
THE NATIONAL TRADE REGISTER OFFICE

București, Bd. Unirii nr. 74, Bl. J3b, tronson II+III, sector 3; Telefon: +40 21 316.08.04, 316.08.10; Fax: +40 21 316.08.03; Cod poștal: 030837  
Website: [www.onrc.ro](http://www.onrc.ro); E-mail: [onrc@onrc.ro](mailto:onrc@onrc.ro); Cod identificare Fiscală: 14942091

# COMPANIES BY FOREIGN DIRECT INVESTMENT

## STATISTICAL SYNTHESIS

### OF THE NATIONAL TRADE REGISTER'S DATA 31<sup>st</sup> JANUARY 2010 - PROVISIONAL DATA



# MINISTRY OF JUSTICE THE NATIONAL TRADE REGISTER OFFICE

- Operations such as incorporation of trading companies, submission of changes, and strike-off are carried out based on Law No.26/1990, as republished, Law No.31/1990, as republished and on the Methodological Norms no. P/608/1998.
- This work reflects the evolution of the operations regarding trading companies with foreign participation in the share capital with the Trade Register Office attached to Bucharest Law Court and the Trade Register Offices attached to County Law Courts.
- The data contained in the Central Trade Register refer to operations for which law sets out the obligation of being registered in the trade registers kept by the 42 trade register offices attached to law courts.

*• The content of this publication shall not be reproduced, partly or entirely, in original or modified form, and shall not be stored in a recovery system and shall not be transmitted in any form or by any means without prior written authorization of the Ministry of Justice – The National Trade Register Office.*

*• The content of this publication January be used in articles, studies, books, as supporting or explanatory data only by clearly and accurately indicating the source.*

# Contents

	Page
<b>1 Definitions</b>	<b>1</b>
<b>2.1 Tables and statistical charts – data related to January 2010</b>	<b>3</b>
Table no. 1 – Number of trading companies with foreign participation in the share capital and the subscribed share capital - balance on 31 January 2010	3
Chart no. 1 – Structure of the number of trading companies with foreign participation in the share capital	3
Chart no. 2 – Investment structure in equivalent currency	3
Table no. 2 – Top of companies by residence countries of investors in trading companies with foreign participation in the share capital - balance on 31 January 2010	4
Chart no. 3 – Structure by domains of activity of the number of trading companies with foreign participation in the share during January 2010	5
Chart no. 4 – Structure by domains of activity of the value of share capital subscribed by trading companies with foreign participation during January 2010	5
Table no. 3 – Number of trading companies with foreign participation in the share capital, and the value of the subscribed share capital – balance at the end of each month of 2008	6
Chart no. 5 – Evolution of the number of trading companies with foreign participation in the share capital – data at the end of the period in 2009	6
Chart no. 6 – Evolution of the investment balance expressed in equivalent currency (thousand USD) - data at the end of the period in 2009.	6
Table no. 4 – New trading companies with foreign participation in the subscribed share capital during January - January 2008 and 2009	7
Chart no. 7 – Dynamics of the number of new companies with foreign participation in the share capital during January – January 2009 and 2010	7
Chart no. 8 – Dynamics of the value of share capital subscribed in new companies during January – January of 2009 and 2010	7
Table no. 5 – Incorporation of trading companies with foreign participation in the share capital during the month of January 2010	8
Table no. 6 – Submission to increase the share capital in trading companies with foreign participation during the month of January 2010	9
Table no. 7 – Strike-off of trading companies with foreign participation in the share capital from the trade register during the month of January 2010	10
Table no. 8 – Submission for share capital assignment in trading companies with foreign participation during the month of January 2010	11
Table no. 9 – Incorporation of trading companies with foreign participation in the share capital, by regions of economic development, during the month of January 2010	12
Table no. 10 – Submission for increase of share capital of trading companies with foreign participation, by regions of economic development, during the month of January 2010	12
Table no. 11 – Strike-off of trading companies with foreign participation, by regions of economic development, during the month of January 2010	12
Table no. 12 – Incorporation of trading companies with foreign participation in the share capital, by continents, according to the investor’s residence, during the month of January 2010	13

Table no.13 – Submission to increase the share capital of trading companies with foreign participation, by continents according to the investor’s residence, during the month of January 2010	13
Table no. 14 – Strike-off of trading companies with foreign participation, by continents, according to the investor’s residence, during the month of January 2010	13
Table no. 15 – Incorporation of trading companies with foreign participation in the share capital, by economic groupings of countries, according to the investor’s residence, during the month January 2010	14
Table no. 16 – Submission for increase of the share capital of trading companies with foreign participation, by economic groupings of countries, according to the investor’s residence, during the month of January 2010	14
Table no. 17 – Strike-off of trading companies with foreign participation, by economic groupings of countries, according to the investor’s residence, during the month of January 2010	14
Table no. 18 – Top by residence countries of investors in trading companies with foreign participation in the share capital, incorporated during the month of January 2010	15
Table no. 19 – Top by residence countries of investors according to the value of the share capital registered by submission for increase of the share capital during the month of January 2010	16
Table no. 20 –Top of the first 40 trading companies by foreign participation in the total subscribed share capital, in equivalent currency, during the month of January 2010	17
<b>2.2 Data related to the period 1991 – 2009</b>	<b>18</b>
Table no. 21 – Number of trading companies with foreign participation in the share capital and the value of the subscribed share capital, during 1991 and 2008	18
Chart no. 9 – Evolution of the number of companies during 1991-2008	18
Chart no. 10 – Evolution of the investment expressed in equivalent currency during 1991-2008	18
Table no. 22 – Trading companies with foreign participation in the share capital and the value of the total subscribed share capital during 1991 – 2008 – balance on 31 December 2009	19
Table no. 23 – Trading companies with foreign participation in the share capital and the value of January December 2009	20
Table no. 24 – Trading companies with foreign participation in the share capital and the value of the total subscribed share capital, by continents, during 1991 and 2009 - balance on 31 December 2009	20
Table no. 25 – Trading companies with foreign participation in the share capital and the value of the total subscribed share capital, by economic groupings, during 1991 and 2009 - balance on December 2009	20
Chart no. 11 – Structure of domains of activity of the number of trading companies with foreign participation in the share capital registered during 1991 – 2009 - balance on 31 December 2009	21
Chart no. 12– Structure of domains of activity of the total share capital subscribed by trading companies with foreign participation in the share capital during 1991 and 2008 - balance on 31 December 2009	21
Table no. 26 – Top of the countries by foreign participation in the total subscribed share capital during 1991 and 2008 - balance on 31 December 2009	22

## Definitions

• **A trading company with foreign participation in the share capital** is such trading company partially or entirely established with the participation of natural or legal persons, with stable residence or registered office outside Romania.

• **Foreign investor** is a natural or legal person with stable residence or registered office outside Romania, having the capacity of associate/shareholder in a trading company with registered office in Romania.

• **Share capital** is the total value of the participation, in cash and in kind, subscribed by the shareholders upon incorporation of a company, and upon increase of the share capital during the trading company operation.

*Subscription* to the share capital by a foreign investor, according to the legislation in force, January be made in the national currency of Romania and/or in freely convertible currency.

*Increase of share capital* registered by submission includes:

- The foreign investors' participation out of new own resources, in cash and/or in kind, in lei and/or hard currency;
- participation from dividends obtained in Romania;
- acquisition of shares by a non-resident person from a resident one.

*Decrease/(increase by) assignment* of share capital includes the amounts representing participation in the share capital of non-resident associates/shareholders assigned to/(received from) resident associates/shareholders.

• **Foreign investment of capital in Romania** ( **Is** ) equals to the value of foreign capital subscribed upon incorporation (**I**) plus subscriptions through submissions to increase the foreign capital (**M**), plus/minus the assigned share capital by/to resident associates/shareholders (**C**), minus the share capital subscribed to companies struck-off from the trade register (**R**), i.e.:

$$Is = I + M \pm C - R$$

### Used Terms:

• **incorporation** – represents the registration of the applicant in the trade register granting the quality of legal person thereto.

• **submission** – is the registration of the changes occurred during the operation of the company, such as: change of registered office, change of share capital, merger, winding-up, dissolution, etc.

• **strike-off** – is the operation of removing a company with foreign investor from the trade register, setting out the date a company loses its quality of legal person as a result of dissolution or winding-up thereof. The data regarding strike-offs also include trading companies under the provisions of Law No. 314/2001.

• **Operations** performed in the trade register represent all the registrations including incorporations, submissions and strike-offs of trading companies with foreign participation in the share capital, irrespective of the nature of activity and type of trading company.

• **Terms used in tables and charts**

➤ **Number of trading companies:** depending on the table, it represents the number of trading companies incorporated during the reference period, the number of companies having registered increases/decreases of share capital, the number of trading companies struck-off from the trade register.

➤ **The value of the subscribed share capital:**

- **a total, expressed in national currency:** the value of the subscribed share capital resulted from adding up the values subscribed in national currency (lei) with the value in freely convertible currency exchanged in lei, at the exchange rate, notified by the National Bank of Romania, of the date of the deed of incorporation/modifier document;

- **a total, expressed in currency equivalent:**

**USD** : the value of the subscribed share capital obtained by adding up and exchanging into USD the freely convertible currency, and the national currency (lei), at the exchange rate, notified by the National Bank of Romania, of the date of the deed of incorporation/modifier document

**Euro** : the balance existing at the end of each month, calculated in equivalent USD, are exchanged into Euro at EURO/USD exchange rate, notified by the National Bank of Romania, of the last working day of the respective month.

➤ **Regions of economic development:**

<i>North-East:</i>	Suceava, Botoșani, Neamț, Iași, Bacău, Vaslui.
<i>South-East:</i>	Vrancea, Galați, Buzău, Brăila, Tulcea, Constanța.
<i>South-Muntenia:</i>	Argeș, Dâmbovița, Prahova, Teleorman, Giurgiu, Călărași, Ialomița.
<i>South-West Oltenia:</i>	Gorj, Vâlcea, Dolj, Mehedinți, Olt.
<i>West:</i>	Arad, Caraș-Severin, Hunedoara, Timiș.
<i>North-West:</i>	Bihor, Bistrița, Cluj, Satu Mare, Sălaj, Maramureș.
<i>Center:</i>	Alba, Brașov, Covasna, Harghita, Mureș, Sibiu.
<i>Bucharest-Ilfov:</i>	București, Ilfov.

Sources of Information:

The integrated IT system of the trade register is designed by The National Trade Register Office in compliance with the provisions of the related legislation in force. The source of information consists of the trade registers organized in a computerized system, kept by the trade register offices attached to law courts.

**Number of companies by foreign direct investment  
and the amount of the subscribed capital,  
31 January 2010**

Balance account by end of period	Number of companies		Amount of subscribed capital					
			Total in ROL		Total in currency		Total in currency	
	No.	%	%	thousand USD	%	thousand EURO	%	
0	1		2		3		4	
31 January 2010, out of which	167182	100,3	80780637,5	102,6	34541560,9	101,8	25684612,1	101,8
31 December 2008	166728	100,0	78730295,5	100,0	33915262,8	100,0	25236251,3	100,0

*Note: column No. 1 shows the number of companies incorporated in the due period. The data concerning the amount of the subscribed capital include the records on the issued capital in companies incorporated in the related period plus the records of increase in capital and minus the subscribed capital in companies being struck-off from the trade register in the same period. The percentage inserted in column No. 1,2,3 and 4 shows the trend compared to the records of December 2007.*

Diagram no. 1

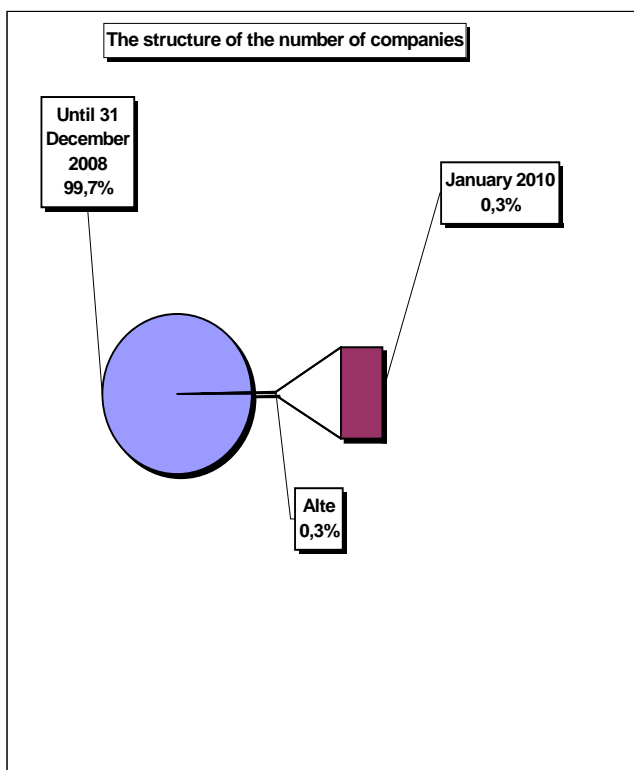


Diagram no. 2

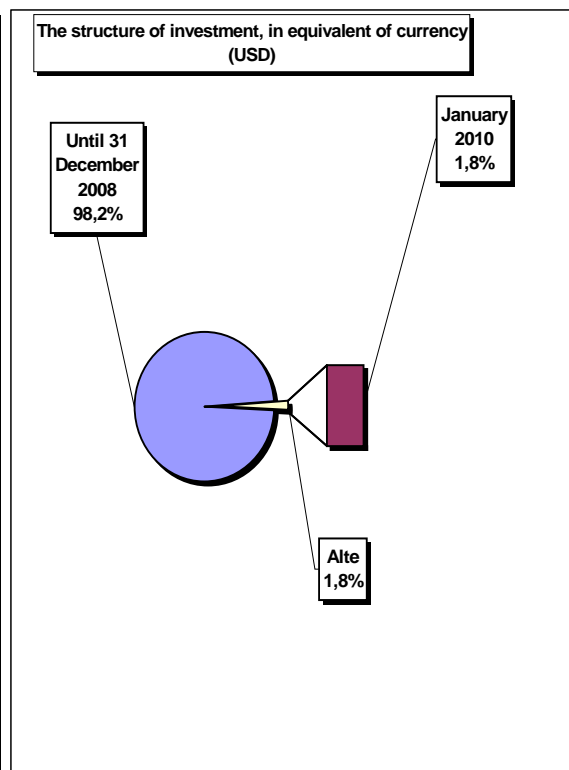


Table no. 2

**Classification\* of companies by foreign direct investment  
by the investors' countries of origin,  
balance account at 31 January 2010**

No. crt.	Countries	Companies by foreign investment		Amount of subscribed capital					
				Total in local currency		Total in equivalent of currency		Total in equivalent of currency	
		No.	%	thousand RON	%	thousand USD	%	thousand EUR	%
0	1	2		3		4		5	
	<b>Total ROMANIA</b>	<b>167182</b>	<b>100,0</b>	<b>80780637,5</b>	<b>100,0</b>	<b>34541560,9</b>	<b>100,0</b>	<b>25684612,1</b>	<b>100,0</b>
1	OLANDA	3688	2,21	13540408,4	16,76	5757294,7	16,67	4121591,7	16,05
2	AUSTRIA	5752	3,44	10421140,0	12,90	5078816,7	14,70	3635875,9	14,16
3	GERMANIA	17669	10,57	9864636,7	12,21	5064165,8	14,66	3625387,4	14,12
4	FRANTA	6252	3,74	6943716,3	8,60	2674907,4	7,74	1914940,4	7,46
5	GRECIA	4792	2,87	5326984,8	6,59	2206364,7	6,39	1579515,2	6,15
6	CIPRU	4533	2,71	3961808,8	4,90	1826665,1	5,29	1307691,9	5,09
7	ITALIA	29027	17,36	3693455,4	4,57	1649769,0	4,78	1181053,7	4,60
8	ELVETIA	2082	1,25	2166231,4	2,68	1040197,5	3,01	744667,3	2,90
9	S.U.A.	6063	3,63	2035253,0	2,52	943804,9	2,73	675660,8	2,63
10	SPANIA	3840	2,30	2206757,3	2,73	934851,6	2,71	669251,2	2,61
11	LUXEMBURG	649	0,39	2177352,7	2,70	877397,0	2,54	628120,1	2,45
12	MAREA BRITANIE	4153	2,48	1873524,1	2,32	815464,5	2,36	583783,2	2,27
13	ANTILELE OLANDEZE	15	***	1986085,8	2,46	722125,1	2,09	516962,4	2,01
14	UNGARIA	10273	6,14	1485415,4	1,84	709952,5	2,06	508248,1	1,98
15	TURCIA	11547	6,91	1123835,8	1,39	515542,9	1,49	369072,2	1,44
16	CEHIA	478	0,29	1159661,0	1,44	471745,4	1,37	337717,9	1,31
17	CHINA	9792	5,86	929436,7	1,15	378943,5	1,10	271282,0	1,06
18	BELGIA	2374	1,42	704030,6	0,87	351785,2	1,02	251839,6	0,98
19	SUEDIA	1162	0,70	671878,9	0,83	271387,4	0,79	194283,6	0,76
20	DANEMARCA	644	0,39	497315,6	0,62	196660,1	0,57	140787,1	0,55
21	FINLANDA	122	0,07	406240,7	0,50	172688,0	0,50	123625,7	0,48
22	JAPONIA	227	0,14	442086,2	0,55	172466,2	0,50	123466,9	0,48
23	PORTUGALIA	376	0,22	431160,4	0,53	154658,2	0,45	110718,3	0,43
24	I.VIRGINE BRIT.	308	0,18	347003,7	0,43	148077,5	0,43	106007,2	0,41
25	POLONIA	541	0,32	428906,0	0,53	123688,9	0,36	88547,7	0,34
26	LIBAN	3547	2,12	241408,2	0,30	118954,1	0,34	85158,1	0,33
27	GIBRALTAR	60	0,04	210721,2	0,26	82110,3	0,24	58782,0	0,23
28	FARA CETATENIE	25	0,01	908,5	***	76562,9	0,22	54810,7	0,21
29	CANADA	1536	0,92	174092,5	0,22	74880,0	0,22	53605,9	0,21
30	COREEA SUD	156	0,09	45150,2	0,06	73269,9	0,21	52453,2	0,20
31	NORVEGIA	290	0,17	240759,1	0,30	69763,0	0,20	49942,7	0,19
32	LIECHTENSTEIN	195	0,12	3278549,1	4,06	67561,1	0,20	48366,3	0,19
33	ISRAEL	5986	3,58	360652,9	0,45	63839,3	0,18	45701,9	0,18
34	R. ARABA SIRIA	5427	3,25	76685,2	0,09	57499,2	0,17	41163,1	0,16
35	INS.MARSHALL	17	0,01	134548,9	0,17	48622,1	0,14	34808,1	0,14
36	SLOVENIA	155	0,09	114113,7	0,14	47442,1	0,14	33963,3	0,13
37	SINGAPORE	51	0,03	123260,7	0,15	47194,5	0,14	33786,1	0,13
38	IRAK	5598	3,35	76150,8	0,09	40322,1	0,12	28866,2	0,11
39	MOLDOVA	3546	2,12	78718,0	0,10	35862,7	0,10	25673,7	0,10
40	BULGARIA	1171	0,70	79663,1	0,10	34775,1	0,10	24895,1	0,10
41	PANAMA	170	0,10	34407,3	0,04	24831,1	0,07	17776,4	0,07
42	IRLANDA	723	0,43	45738,1	0,06	24668,4	0,07	17659,9	0,07
43	IORDANIA	3128	1,87	42293,9	0,05	22803,7	0,07	16325,0	0,06
44	AUSTRALIA	650	0,39	45436,3	0,06	22133,0	0,06	15844,8	0,06
45	EGIPT	1361	0,81	46767,7		21095,6	0,06	15102,2	0,06
46	IRAN	2583	1,55	31340,8	0,04	17899,3	0,05	12814,0	0,05
47	BELIZE	31	0,02	46810,8	0,06	17410,3	0,05	12463,9	0,05
48	MALTA	80	0,05	37796,7	0,05	15469,3	0,04	11074,3	0,04
49	ISLANDA	43	0,03	22517,5	0,03	14256,6	0,04	10206,1	0,04
50	ARABIA SAUDITA	131	0,08	32270,6	0,04	13121,9	0,04	9393,8	0,04

\*) includes countries selected upon the amount of the foreign direct investment, in equivalent of currency

\*\*\* Less than 0,01%

Diagram no. 3

The structure upon sector of activity\* of companies by foreign direct investment, during January 2009

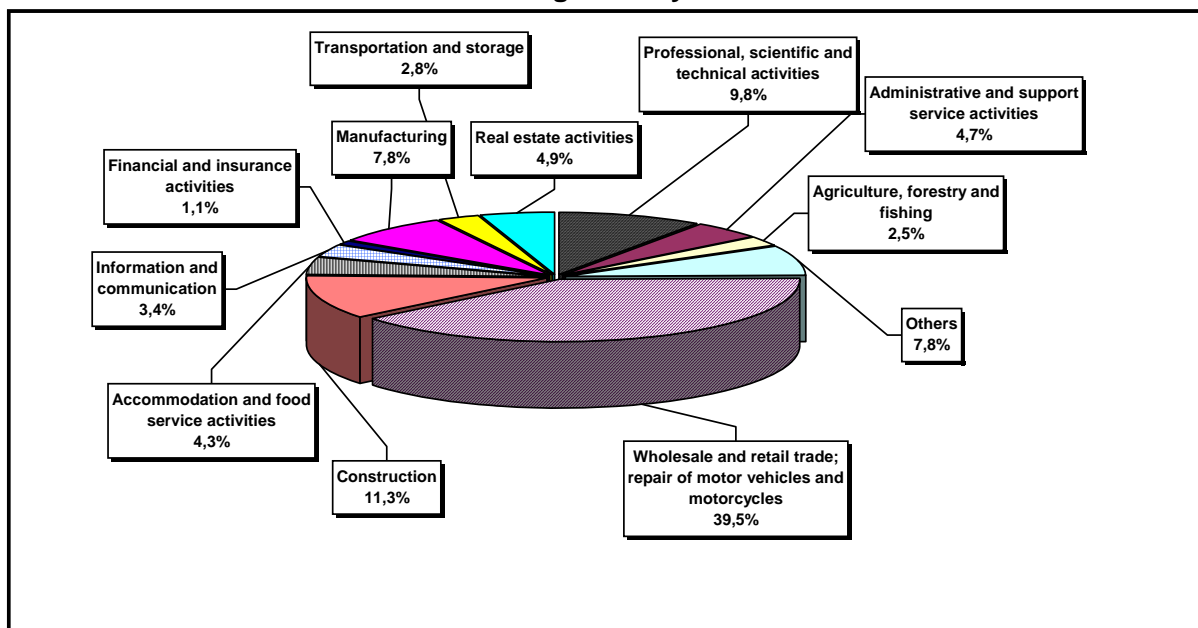
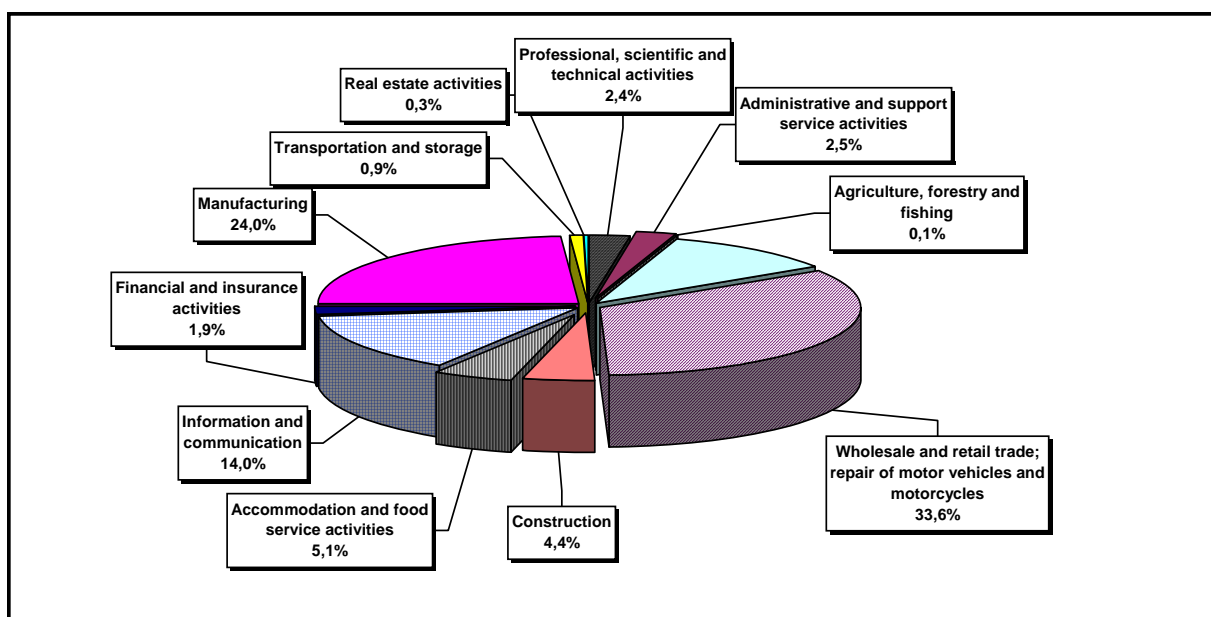


Diagram no. 4

The structure upon sector of activity in the amount of subscribed capital\*\* in companies by foreign direct investment, during January



\*) Calculated upon the main sector of activity declared

\*\*) Calculated upon the total amount of the subscribed capital, in equivalent of currency (USD)

Table no. 4

Comparative data on new companies by foreign direct investment and the subscribed capital, between January - December 2009 and 2010

Month	2008				2009					
	New companies		Subscribed capital, in equivalent of currency		New companies		Trend related to 2007 (5/1)	Subscribed capital, in equivalent of currency		Trend related to 2007 (8/3)
	No.	%	thousand USD	%	No.	%	%	thousand USD	%	%
0	1	2	3	4	5	6	7	8	9	10
Jan-December out of which:	624	100,0	4312,9	100,0	454	100,0	72,8	2606,5	100,0	60,4
JANUARY	624	100,0	4312,9	100,0	454	100,0	72,8	2606,5	100,0	60,4

Note: columns No. 1 and No. 5 show the number of new companies incorporated in the due period. The data on the subscribed capital include the initial capital subscribed in the related period. Columns No. 2, 4, 6 and 9 show the weight of each month in total period referred to.

Diagram no. 7

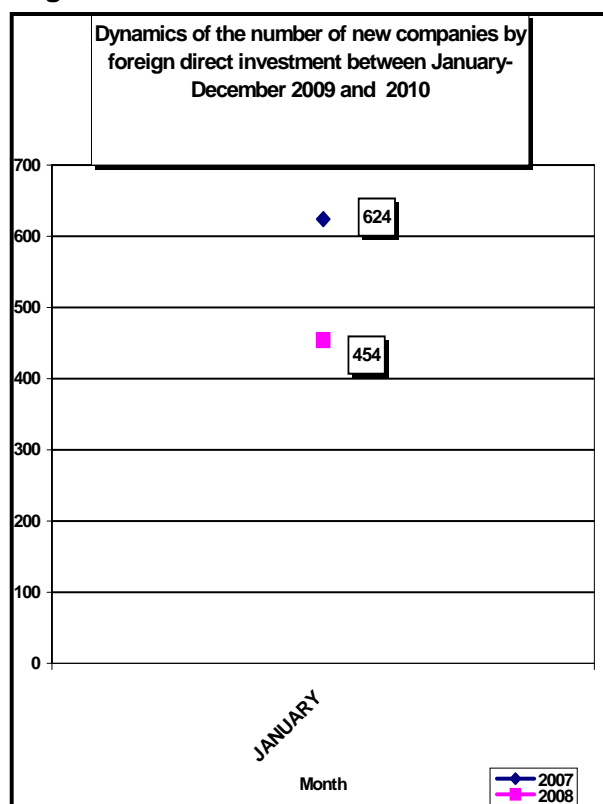


Diagram no. 8

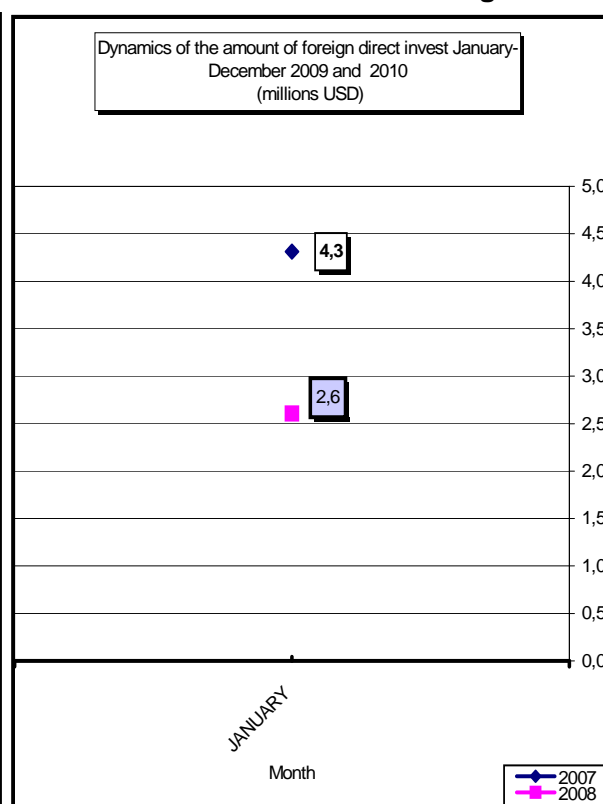


Table no. 5

**Incorporation of companies by foreign direct investment,  
during January 2010**

balance account at 30 Sept 2008	Number of companies		Amount of subscribed capital						Ranking by:	
			Total in local currency		Total in equivalent of currency		Total in equivalent of currency			
	No.	%	mii RON	%	USD	%	EURO	%		
0	1		2		3		4		5	
<b>Total ROMANIA</b>	<b>454</b>	<b>100,0</b>	<b>7527,9</b>	<b>100,0</b>	<b>2606463,0</b>	<b>100,0</b>	<b>1809951,3</b>	<b>100,0</b>	*	**
ALBA										
ARAD	20	4,41	270,6	3,59	93028,0	3,57	64599,5	3,57	5	3
ARGES	3	0,66	1,3	0,02	438,0	0,02	304,2	0,02	14	25
BACAU	5	1,10	2396,3	31,83	840538,0	32,25	583677,1	32,25	12	2
BIHOR	22	4,85	33,7	0,45	11777,0	0,45	8178,1	0,45	4	10
BISTRITA-NASAUD	2	0,44	0,4	***	123,0	***	85,4	***	15	34
BOTOSANI	1	0,22	1,0	0,01	334,0	0,01	231,9	0,01	16	28
BRASOV	10	2,20	2,8	0,04	964,0	0,04	669,4	0,04	8	20
BRAILA	4	0,88	85,5	1,14	29464,0	1,13	20460,1	1,13	13	8
BUZAU	4	0,88	5,8	0,08	1957,0	0,08	1359,0	0,08	13	17
CARAS-SEVERIN	2	0,44	0,4	***	137,0	***	95,1	***	15	33
CALARASI	3	0,66	0,5	***	181,0	***	125,7	***	14	32
CLUJ	11	2,42	2,1	0,03	717,0	0,03	497,9	0,03	7	22
CONSTANTA	13	2,86	20,5	0,27	7141,0	0,27	4958,8	0,27	6	11
COVASNA	1	0,22	12,0	0,16	4195,0	0,16	2913,0	0,16	16	14
DAMBOVITA	6	1,32	12,3	0,16	4308,0	0,17	2991,5	0,17	11	13
DOLJ	5	1,10	0,8	0,01	264,0	0,01	183,3	0,01	12	30
GALATI	2	0,44	2,0	0,03	695,0	0,03	482,6	0,03	15	23
GIURGIU	1	0,22	0,2	***	60,0	***	41,7	***	16	36
GORJ	2	0,44	3,1	0,04	1106,0	0,04	768,0	0,04	15	19
HARGHITA	8	1,76	99,7	1,32	34290,0	1,32	23811,3	1,32	9	6
HUNEDOARA	7	1,54	14,0	0,19	4769,0	0,18	3311,6	0,18	10	12
IALOMITA	1	0,22	0,2	***	68,0	***	47,2	***	16	35
IASI	11	2,42	56,3	0,75	19315,0	0,74	13412,5	0,74	7	9
MARAMURES	7	1,54	5,5	0,07	1940,0	0,07	1347,2	0,07	10	18
MEHEDINTI	6	1,32	1,0	0,01	338,0	0,01	234,7	0,01	11	27
MURES	11	2,42	9,6	0,13	3276,0	0,13	2274,9	0,13	7	15
NEAMT	4	0,88	1,0	0,01	342,0	0,01	237,5	0,01	13	26
OLT	1	0,22	0,1	***	34,0	***	23,6	***	16	37
PRAHOVA	8	1,76	86,0	1,14	29909,0	1,15	20769,1	1,15	9	7
SALAJ	1	0,22	1,5	0,02	511,0	0,02	354,8	0,02	16	24
SATU MARE	10	2,20	2,5	0,03	846,0	0,03	587,5	0,03	8	21
SIBIU	7	1,54	8,7	0,12	3016,0	0,12	2094,3	0,12	10	16
SUCEAVA	3	0,66	0,6	***	193,0	***	134,0	***	14	31
TELEORMAN	1	0,22	0,1	***	34,0	***	23,6	***	16	37
TIMIS	29	6,39	240,8	3,20	84400,0	3,24	58608,1	3,24	3	4
TULCEA	1	0,22	0,2	***	68,0	***	47,2	***	16	35
VASLUI										
VALCEA	3	0,66	0,5	***	270,0	0,01	187,5	0,01	14	29
VRANCEA										
MUN. BUCURESTI	170	37,44	3961,2	52,62	1359540,0	52,16	944076,8	52,16	1	1
ILFOV	48	10,57	187,3	2,49	65877,0	2,53	45745,6	2,53	2	5

\*) number of companies (column 1)

\*\*) capital in equivalent currency (column3)

\*\*\* Less than 0.01%

Table no. 6

**Statutory increase of the issued capital,  
in companies by foreign direct investment  
during January 2010**

balance account at 30 Sept 2008	Number of companies		Amount of subscribed capital						Ranking by:	
			Total in local currency		Total in equivalent of currency		Total in equivalent of currency			
	No.	%	mii RON	%	USD	%	EURO	%		
0	1	2		3		4		5		
<b>Total ROMANIA</b>	<b>1109</b>	<b>100,00</b>	<b>2790751,7</b>	<b>100,00</b>	<b>875119373,0</b>	<b>100,00</b>	<b>607690741,0</b>	<b>100,00</b>	*	**
ALBA	6	0,54	2,4	***	832,0	***	577,7	***	16	34
ARAD	18	1,62	324,1	0,01	75975,0	***	52757,7	***	8	25
ARGES	8	0,72	74764,2	2,68	26405650,0	3,02	18336320,2	3,02	14	4
BACAU	13	1,17	2666,4	0,10	2098436,0	0,24	1457172,8	0,24	11	10
BIHOR	30	2,71	1366,2	0,05	425570,0	0,05	295519,6	0,05	4	20
BISTRITA-NASAUD	1	0,09	1708,9	0,06	588407,0	0,07	408595,1	0,07	21	16
BOTOSANI	1	0,09	0,2	***	74,0	***	51,4	***	21	37
BRASOV	19	1,71	38052,2	1,36	12269982,0	1,40	8520385,5	1,40	7	7
BRAILA	5	0,45	579,8	0,02	1529528,0	0,17	1062118,0	0,17	17	12
BUZAU	13	1,17	4504,5	0,16	1551480,0	0,18	1077361,6	0,18	11	11
CARAS-SEVERIN	1	0,09	16,0	***	5606,0	***	3892,9	***	21	28
CALARASI	2	0,18	0,1	***	47,0	***	32,6	***	20	38
CLUJ	28	2,52	62843,9	2,25	1198761,0	0,14	832430,4	0,14	6	13
CONSTANTA	29	2,61	80825,9	2,90	27902554,0	3,19	19375783,7	3,19	5	3
COVASNA	6	0,54	73600,4	2,64	10643775,0	1,22	7391132,8	1,22	16	8
DAMBOVITA	2	0,18	6,0	***	2037,0	***	1414,5	***	20	32
DOLJ	3	0,27	214,2	***	97174,0	0,01	67478,5	0,01	19	24
GALATI	2	0,18	6,2	***	2143,0	***	1488,1	***	20	31
GIURGIU	7	0,63	24355,2	0,87	5166624,0	0,59	3587750,0	0,59	15	9
GORJ	4	0,36	1,1	***	327,0	***	227,1	***	18	35
HARGHITA	7	0,63	1644,4	0,06	563299,0	0,06	391159,9	0,06	15	17
HUNEDOARA	9	0,81	2,6	***	899,0	***	624,3	***	13	33
IALOMITA	7	0,63	0,9	***	311,0	***	216,0	***	15	36
IASI	19	1,71	488,7	0,02	168468,0	0,02	116985,7	0,02	7	23
MARAMURES	5	0,45	499,6	0,02	172868,0	0,02	120041,1	0,02	17	22
MEHEDINTI	4	0,36	0,2	***	27479,0	***	19081,7	***	18	27
MURES	15	1,35	1512,5	0,05	516365,0	0,06	358568,5	0,06	10	18
NEAMT	7	0,63	139,7	***	49005,0	***	34029,5	***	15	26
OLT	2	0,18	550,1	0,02	-164024,0	-0,02	-113899,7	-0,02	20	41
PRAHOVA	16	1,44	7402,4	0,27	1092389,0	0,12	758564,7	0,12	9	14
SALAJ	5	0,45	8,0	***	3000,0	***	2083,2	***	17	30
SATU MARE	8	0,72	10,4	***	3550,0	***	2465,2	***	14	29
SIBIU	12	1,08	2739,7	0,10	941944,0	0,11	654094,4	0,11	12	15
SUCEAVA	5	0,45	22570,3	0,81	-9955168,0	-1,14	-6912957,9	-1,14	17	42
TELEORMAN	2	0,18	1216,7	0,04	426700,0	0,05	296304,3	0,05	23	42
TIMIS	47	4,24	36900,4	1,32	13414776,0	1,53	9315340,8	1,53	3	5
TULCEA	2	0,18	101,6	***	-21985,0	0,00	-15266,6	0,00	20	40
VASLUI	2	0,18	1,0	***	-352,0	0,00	-244,4	0,00	20	39
VALCEA	4	0,36	1183,5	0,04	401022,0	0,05	278473,3	0,05	18	21
VRANCEA	9	0,81	40391,9	1,45	13259877,0	1,52	9207777,5	1,52	13	6
MUN. BUCURESTI	659	59,42	2023849,0	72,52	670354360,0	76,60	465500079,6	76,60	1	1
ILFOV	65	5,86	283700,4	10,17	93899608,0	10,73	65204729,9	10,73	2	2

\*) number of companies (column 1)

\*\*) capital in equivalent currency (column3)

\*\*\* Less than 0.01%

Note: Empty rows reveal that there are no operation in the current month

Table no. 7

**Strike-off of companies by foreign direct investment,  
from the trade register, during January 2010**

balance account at 30 Sept 2008	Number of companies		Amount of subscribed capital						Ranking by:	
			Total in local currency		Total in equivalent of currency		Total in equivalent of currency			
	No.	%	mii RON	%	USD	%	EURO	%	*	**
0	1		2		3		4		5	
<b>Total ROMANIA</b>	<b>461</b>	<b>100,0</b>	<b>88649,4</b>	<b>100,0</b>	<b>32458901,0</b>	<b>100,0</b>	<b>22539752,0</b>	<b>100,0</b>	*	**
ALBA	4	0,87	137,4	0,15	52818,0	0,16	36677,3	0,16	13	11
ARAD	10	2,17	36,1	0,04	32257,0	0,10	22399,6	0,10	8	14
ARGES	8	1,74	30,2	0,03	12494,0	0,04	8675,9	0,04	10	20
BACAU	8	1,74	23,7	0,03	8891,0	0,03	6174,0	0,03	10	21
BIHOR	10	2,17	3,2	***	1370,0	***	951,3	***	8	24
BISTRITA-NASAUD	1	0,22	2,5	***	736,0	***	511,1	***	16	26
BOTOSANI	1	0,22	0,2	***	68,0	***	47,2	***	16	35
BRASOV	9	1,95	7,4	***	3573,0	0,01	2481,1	0,01	9	22
BRAILA	6	1,30	6992,8	7,89	2303948,0	7,10	1599882,2	7,10	11	2
BUZAU	20	4,34	22,1	0,02	18938,0	0,06	13150,7	0,06	5	15
CARAS-SEVERIN	3	0,65	0,5	***	166,0	***	115,3	***	14	32
CALARASI										
CLUJ	26	5,64	899,3	1,01	775767,0	2,39	538699,6	2,39	3	4
CONSTANTA	9	1,95	96,2	0,11	34684,0	0,11	24084,9	0,11	9	13
COVASNA	5	1,08	1,6	***	544,0	***	377,8	***	12	28
DAMBOVITA	2	0,43	902,3	1,02	269044,0	0,83	186826,6	0,83	15	7
DOLJ	1	0,22	0,2	***	64,0	***	44,4	***	16	36
GALATI	3	0,65	135,6	0,15	51604,0	0,16	35834,3	0,16	14	12
GIURGIU	1	0,22	0,2	***	70,0	***	48,6	***	16	34
GORJ	21	4,56	14,9	0,02	13968,0	0,04	9699,5	0,04	4	17
HARGHITA	2	0,43	31,2	0,04	12573,0	0,04	8730,8	0,04	15	19
HUNEDOARA	4	0,87	1,4	***	499,0	***	346,5	***	13	29
IALOMITA	2	0,43	0,7	***	228,0	***	158,3	***	15	30
IASI	6	1,30	6,1	***	2156,0	***	1497,1	***	11	23
MARAMURES										
MEHEDINTI	3	0,65	1750,0	1,97	487578,0	1,50	338578,5	1,50	14	5
MURES	5	1,08	32,3	0,04	137810,0	0,42	95696,5	0,42	12	9
NEAMT										
OLT										
PRAHOVA	11	2,39	37,3	0,04	13289,0	0,04	9228,0	0,04	7	18
SALAJ	2	0,43	1,6	***	660,0	***	458,3	***	15	27
SATU MARE	2	0,43	0,5	***	183,0	***	127,1	***	15	31
SIBIU	10	2,17	2712,8	3,06	1059127,0	3,26	735467,3	3,26	8	3
SUCEAVA										
TELEORMAN	2	0,43	1,8	***	864,0	***	600,0	***	15	25
TIMIS	32	6,94	410,0	0,46	441212,0	1,36	306381,6	1,36	2	6
TULCEA	3	0,65	37,2	0,04	14092,0	0,04	9785,6	0,04	14	16
VASLUI	2	0,43	51,5	0,06	166903,0	0,51	115898,9	0,51	15	8
VALCEA										
VRANCEA	1	0,22	0,3	***	82,0	***	56,9	***	16	33
MUN. BUCURESTI	214	46,42	73752,1	83,20	26418367,0	81,39	18345151,0	81,39	1	1
ILFOV	12	2,60	516,6	0,58	122274,0	0,38	84908,2	0,38	6	10

\*) number of companies (column 1)

\*\*) capital in equivalent currency (column3)

\*\*\* Less than 0.01%

Note: Empty rows reveal that there are no operation in the current month

Table no. 8

**Changes by cession in the issued capital  
of the companies by foreign direct investment,  
during January 2010**

balance account at 30 December 2008	Number of companies		Amount of subscribed capital						Ranking by:				
			Total in local currency		Total in equivalent of currency		Total in equivalent of currency						
	No.	%	mii RON	%	USD	%	EURO	%			0	1	2
<b>Total ROMANIA</b>	<b>742</b>	<b>100,0</b>	<b>659288,3</b>	<b>100,0</b>	<b>218968834</b>	<b>100,0</b>	<b>152053922</b>	<b>100,0</b>	*	**			
ALBA	2	0,3	1,8 ***		10034 ***		6968 ***		16	20			
ARAD	17	2,3	691,3	0,10	217661	0,10	151146	0,10	6	14			
ARGES	4	0,5	14871,0	2,26	1477514,0	0,67	1025999,0	0,67	14	6			
BACAU	6	0,8	2005,6	0,30	1364255	0,62	947351	0,62	12	8			
BIHOR	24	3,2	1237,8	0,19	380412	0,17	264162	0,17	5	13			
BISTRITA-NASAUD													
BOTOSANI	1	0,1	0,2 ***		74 ***		51 ***		17	34			
BRASOV	13	1,8	8512,7	1,29	3553840	1,62	2467818	1,62	8	5			
BRAILA	4	0,5	329,8	0,05	1272961	0,58	883956	0,58	14	9			
BUZAU	3	0,4	560,6	0,09	173946	0,08	120790	0,08	15	16			
CARAS-SEVERIN	2	0,3	1,5 ***		540 ***		375 ***		16	27			
CALARASI													
CLUJ	14	1,9	2241,6	0,34	1037225	0,47	720258	0,47	7	11			
CONSTANTA	32	4,3	7494,1	1,14	7640747	3,49	5305803	3,49	4	3			
COVASNA	6	0,8	475,4	0,07	176188	0,08	122347	0,08	12	15			
DAMBOVITA	2	0,3	0,8 ***		357 ***		248 ***		16	28			
DOLJ	3	0,4	10,7	0,00	3741	0,00	2598	0,00	15	37			
GALATI	4	0,5	7,6 ***		2948 ***		2047 ***		14	24			
GIURGIU	6	0,8	1412,0	0,21	481492	0,22	334352	0,22	12	12			
GORJ	7	0,9	126,8	0,02	12877 ***		8942 ***		11	19			
HARGHITA	5	0,7	4148,1	0,63	1408723	0,64	978230	0,64	13	7			
HUNEDOARA	2	0,3	0,3 ***		96 ***		67 ***		16	31			
IALOMITA	3	0,4	0,0 ***		4 ***		3 ***		15	35			
IASI	12	1,6	19,4 ***		7345 ***		5100 ***		9	21			
MARAMURES	2	0,3	0,3 ***		91 ***		63 ***		16	32			
MEHEDINTI	4	0,5	0,8 ***		4418 ***		3068 ***		14	22			
MURES	11	1,5	5,8 ***		1954 ***		1357 ***		10	26			
NEAMT	4	0,5	10699,0	1,62	4418541	2,02	3068274	2,02	14	4			
OLT													
PRAHOVA	7	0,9	104,4	0,02	42439	0,02	29470	0,02	11	18			
SALAJ	2	0,3	5,9 ***		2360 ***		1639 ***		16	25			
SATU MARE	5	0,7	204,4	0,03	67900	0,03	47150	0,03	13	17			
SIBIU	7	0,9	23,1 ***		3825 ***		2656 ***		11	23			
SUCEAVA	1	0,1	0,4 ***		117 ***		81 ***		17	30			
TELEORMAN													
TIMIS	36	4,9	1244,2	0,19	1186488	0,54	823908	0,54	3	10			
TULCEA	2	0,3	85,5	0,01	29996	0,01	20829	0,01	16	38			
VASLUI	2	0,3	0,2 ***		75 ***		52 ***		16	33			
VALCEA													
VRANCEA	2	0,3	0,7 ***		234 ***		162 ***		16	29			
MUN. BUCURESTI	410	55,3	553662,7	83,98	176448082	80,58	122527131	80,58	1	1			
ILFOV	75	10,1	49294,4	7,48	17606808	8,04	12226325	8,04	2	2			

\*) number of companies (column 1)

\*\*) capital in equivalent currency (column 3)

\*\*\* Less than 0,01%

**Note: Empty rows reveal that there are no operation in the current month**

Table no. 9

**Incorporation of companies by foreign direct investment,  
according to the development regions,  
during January 2010**

Development regions	Number of companies		Amount of subscribed capital						Ranking by:	
			Total in local currency		Total in equivalent of currency		Total in equivalent of currency			
	No.	%	mii RON	%	USD	%	EURO	%		
0	1		2		3		4		5	
<b>Total ROMANIA</b>	<b>454</b>	<b>100,0</b>	<b>7527,9</b>	<b>100,0</b>	<b>2606463,0</b>	<b>100,0</b>	<b>1809951,3</b>	<b>100,0</b>	*	**
NORTH-EAST	24	5,3	2455,2	32,6	860722,0	33,0	597693,1	33,0	5	2
SOUTH-EAST	24	5,3	113,9	1,5	39325,0	1,5	27307,6	1,5	5	5
SOUTH-MUNTENIA	23	5,1	100,6	1,3	34998,0	1,3	24302,9	1,3	6	6
SOUTH-WEST OLTENIA	17	3,7	5,5	0,1	2012,0	0,1	1397,2	0,1	7	8
WEST	58	12,8	525,7	7,0	182334,0	7,0	126614,4	7,0	2	3
NORTH-WEST	53	11,7	45,7	0,6	15914,0	0,6	11050,8	0,6	3	7
CENTER	37	8,1	132,8	1,8	45741,0	1,8	31763,0	1,8	4	4
BUCHAREST-ILFOV	218	48,0	4148,5	55,1	1425417,0	54,7	989822,3	54,7	1	1

Table no. 10

**Statutory increase in the issued capital of companies by  
foreign direct investment, according to the development regions,  
during January 2010**

Development regions	Number of companies		Amount of subscribed capital						Ranking by:	
			Total in local currency		Total in equivalent of currency		Total in equivalent of currency			
	No.	%	mii RON	%	USD	%	EURO	%		
0	1		2		3		4		5	
<b>Total ROMANIA</b>	<b>1109</b>	<b>100,0</b>	<b>2790751,7</b>	<b>100,0</b>	<b>875119373,0</b>	<b>100,0</b>	<b>607690741,0</b>	<b>100,0</b>	*	**
NORTH-EAST	47	4,2	25866,2	0,9	-7639537,0	-0,9	-5304963,0	-0,9	6	8
SOUTH-EAST	60	5,4	126410,0	4,5	44223597,0	5,1	30709262,4	5,1	5	2
SOUTH-MUNTENIA	44	4,0	107745,5	3,9	33093758,0	3,8	22980602,4	3,8	7	3
SOUTH-WEST OLTENIA	17	1,5	1949,0	0,1	361978,0	0,0	251360,8	0,0	8	7
WEST	75	6,8	37243,1	1,3	13497256,0	1,5	9372615,6	1,5	3	5
NORTH-WEST	77	6,9	66436,9	2,4	2392156,0	0,3	1661134,6	0,3	2	6
CENTER	65	5,9	117551,6	4,2	24936197,0	2,8	17315918,8	2,8	4	4
BUCHAREST-ILFOV	724	65,3	2307549,4	82,7	764253968,0	87,3	530704809,5	87,3	1	1

Table no. 11

**Strike-off of companies by foreign direct investment and the amount  
of their issued capital, according to the development regions,  
during January 2010**

Development regions	Number of companies		Amount of subscribed capital						Ranking by:	
			Total in local currency		Total in equivalent of currency		Total in equivalent of currency			
	No.	%	mii RON	%	USD	%	EURO	%		
0	1		2		3		4		5	
<b>Total ROMANIA</b>	<b>461</b>	<b>100,0</b>	<b>88649,4</b>	<b>100,0</b>	<b>32458901,0</b>	<b>100,0</b>	<b>22539752,0</b>	<b>100,0</b>	*	**
NORTH-EAST	17	3,7	81,5	0,1	178018,0	0,5	123617,3	0,5	8	8
SOUTH-EAST	42	9,1	7284,1	8,2	2423348,0	7,5	1682794,6	7,5	3	2
SOUTH-MUNTENIA	26	5,6	972,4	1,1	295989,0	0,9	205537,4	0,9	6	7
SOUTH-WEST OLTENIA	25	5,4	1765,0	2,0	501610,0	1,5	348322,5	1,5	7	5
WEST	49	10,6	448,0	0,5	474134,0	1,5	329242,9	1,5	2	6
NORTH-WEST	41	8,9	907,1	1,0	778716,0	2,4	540747,4	2,4	4	4
CENTER	35	7,6	2922,6	3,3	1266445,0	3,9	879430,8	3,9	5	3
BUCHAREST-ILFOV	226	49,0	74268,7	83,8	26540641,0	81,8	18430059,1	81,8	1	1

\*) number of companies (column 1)

\*\*) total issued capital, in equivalent of currency (column3)

\*\*\* Less than 0.01%

Note: Empty rows reveal that there are no operation in the current month

Table no. 12

**Incorporation of companies by foreign direct investment, by continents  
according to the investors' country of origin,  
during January 2010**

Continent	Number of companies		Amount of subscribed capital						Ranking by:	
			Total in local currency		Total in equivalent of currency		Total in equivalent of currency			
	No.	%	mii RON	%	USD	%	EURO	%	5	
0	1	2		3		4		5		
<b>Total ROMANIA</b>	<b>454</b>	<b>100,0</b>	<b>7527,9</b>	<b>100,0</b>	<b>2606463,0</b>	<b>100,0</b>	<b>1809951,3</b>	<b>100,0</b>	*	**
EUROPE	374	82,4	7315,4	97,2	2533134,0	97,2	1759031,0	97,2	1	1
AFRICA	5	1,1	7,6	0,1	2653,0	0,1	1842,3	0,1	5	4
NORTH AMERICA	12	2,6	5,2	0,1	1776,0	0,1	1233,3	0,1	3	5
SOUTH AMERICA	9	2,0	86,1	1,1	29679,0	1,1	20609,4	1,1	4	3
ASIA	70	15,4	113,4	1,5	39118,0	1,5	27163,9	1,5	2	2

Table no. 13

**Increase in the issued capital of companies by foreign direct investment,  
by continents according to the investors' country of origin,  
during January 2010**

Continent	Number of companies		Amount of subscribed capital						Ranking by:	
			Total in local currency		Total in equivalent of currency		Total in equivalent of currency			
	No.	%	mii RON	%	USD	%	EURO	%	5	
0	1	2		3		4		5		
<b>Total ROMANIA</b>	<b>1109</b>	<b>100,0</b>	<b>2790751,7</b>	<b>100,0</b>	<b>875119373,0</b>	<b>100,0</b>	<b>607690741,0</b>	<b>100,0</b>	*	**
EUROPE	905	81,6	2738715,7	98,1	857781091,0	98,0	595650882,5	98,0	1	1
AFRICA	13	1,2	100,2	***	34133,0	***	23702,3	***	5	6
NORTH AMERICA	23	2,1	1379,1	0,0	498062,0	0,1	345858,7	0,1	4	3
SOUTH AMERICA	24	2,2	977,9	0,0	321982,0	0,0	223587,2	0,0	3	5
ASIA	207	18,7	48281,3	1,7	15996865,0	1,8	11108366,5	1,8	2	2
OCEANIA	5	0,5	1297,0	0,0	487066,0	0,1	338223,0	0,1	6	4

Table no. 14

**Strike-off of companies by foreign direct investment and their issued capital,  
by continents according to the investors' country of origin,  
during January 2010**

Continent	Number of companies		Amount of subscribed capital						Ranking by:	
			Total in local currency		Total in equivalent of currency		Total in equivalent of currency			
	No.	%	mii RON	%	USD	%	EURO	%	5	
0	1	2		3		4		5		
<b>Total ROMANIA</b>	<b>461</b>	<b>100,0</b>	<b>88649,4</b>	<b>100,0</b>	<b>32458901,0</b>	<b>100,0</b>	<b>22539752,0</b>	<b>100,0</b>	*	**
EUROPE	367	79,6	83524,8	94,2	30447763,0	93,8	21143199,7	93,8	1	1
AFRICA	9	2,0	586,2	0,7	237864,0	0,7	165174,9	0,7	5	4
NORTH AMERICA	18	3,9	27,8	0,0	150341,0	0,5	104398,1	0,5	3	5
SOUTH AMERICA	10	2,2	929,9	1,0	277077,0	0,9	192404,8	0,9	4	3
ASIA	85	18,4	3578,5	4,0	1345000,0	4,1	933980,1	4,1	2	2
OCEANIA	3	0,7	0,0	***	856,0	***	594,4	***	6	6

\*) number of companies (column 1)

\*\*) total issued capital, in equivalent of currency (column3)

\*\*\* Sub 0,01%

Note: Empty rows reveal that there are no operation in the current month

Table no. 15

**Incorporation of companies by foreign direct investment, by economical groups  
of countries according to the investors' country of origin,  
during January 2010**

Economical groups	Number of companies		Amount of subscribed capital						Ranking by:	
			Total in local currency		Total in equivalent of currency		Total in equivalent of currency			
	No.	%	mii RON	%	USD	%	EURO	%		
0	1	2	3	4	5					
<b>Total ROMANIA</b>	<b>454</b>		<b>7527,9</b>		<b>2606463,0</b>		<b>1809951,3</b>		*	**
E.U.	319	70,3	6754,4	89,7	2336694,0	89,6	1622621,3	89,6	2	1
E.A.F.T.A.	4	0,9	212,0	2,8	74517,0	2,9	51745,3	2,9	4	3
O.E.C.D.	330	72,7	5646,2	75,0	1957753,0	75,1	1359481,2	75,1	1	2
C.E.F.T.A.	17	3,7	20,1	0,3	7019,0	0,3	4874,1	0,3	3	4

Table no. 16

**Increase in the issued capital of companies by foreign direct investment,  
by economical groups of countries according to the investors' country of origin,  
during January 2010**

Economical groups	Number of companies		Amount of subscribed capital						Ranking by:	
			Total in local currency		Total in equivalent of currency		Total in equivalent of currency			
	No.	%	mii RON	%	USD	%	EURO	%		
0	1	2	3	4	5					
<b>Total ROMANIA</b>	<b>1109</b>		<b>2790751,7</b>		<b>875119373,0</b>		<b>607690741,0</b>		*	**
E.U.	759	68,4	2491138,0	89,3	771115798,0	88,1	535469725,8	88,1	2	2
E.A.F.T.A.	24	2,2	232873,9	8,3	81697155,0	9,3	56731237,1	9,3	4	3
O.E.C.D.	777	70,1	2526167,3	90,5	783685368,0	89,6	544198147,9	89,6	1	1
C.E.F.T.A.	56	5,0	2866,9	0,1	946521,0	0,1	657272,7	0,1	3	4

Table no. 17

**Strike-off of companies by foreign direct investment and their issued capital,  
by economical groups of countries according to the investors' country of origin,  
during January 2010**

Economical groups	Number of companies		Amount of subscribed capital						Ranking by:	
			Total in local currency		Total in equivalent of currency		Total in equivalent of currency			
	No.	%	mii RON	%	USD	%	EURO	%		
0	1	2	3	4	5					
<b>Total ROMANIA</b>	<b>461</b>		<b>88649,4</b>		<b>32458901,0</b>		<b>22539752,0</b>		*	**
E.U.	310	67,2	82277,1	92,8	30047292,0	92,6	20865109,0	92,6	2	1
E.A.F.T.A.	7	1,5	925,5	1,0	288654,0	0,9	200443,9	0,9	4	3
O.E.C.D.	341	74,0	76320,6	86,1	28284146,0	87,1	19640764,6	87,1	1	2
C.E.F.T.A.	21	4,6	217,0	0,2	19825,0	0,1	13766,7	0,1	3	4

\*) number of companies (column 1)

\*\*) total issued capital, in equivalent of currency (column3)

\*\*\* Less than 0.01%

**Note: Each economic group's weight is calculated related to the total Romania.****The weights' sum is different from 100% due to the fact that one country might be part of more than one economical group.****Empty rows reveal that there are no operations recorded in the current month.**

Table no. 18

**Classification\* by countries of origin of investors  
in companies by foreign direct investment,  
incorporated during January 2010**

No. crt.	Countries	Number of companies		Amount of subscribed capital					
				Total in local currency		Total in equivalent of currency		Total in equivalent of currency	
		No.	%	mii RON	%	USD	%	EURO	%
0	1	2		3		4		5	
	<b>Total ROMANIA, out of which:</b>	<b>454</b>	<b>100,0</b>	<b>7527,9</b>	<b>100,0</b>	<b>2606463,0</b>	<b>100,0</b>	<b>1809951,3</b>	<b>100,0</b>
1	ITALY	89	19,6	2736,0	36,34	957143,0	36,72	664648,7	36,72
2	CYPRUS	25	5,5	1651,8	21,94	569267,0	21,84	395304,1	21,84
3	GERMANY	46	10,1	1353,5	17,98	460794,0	17,68	319979,5	17,68
4	TURKEY	33	7,3	328,7	4,37	114834,0	4,41	79741,8	4,41
5	SWITZERLAND	3	0,7	211,4	2,81	74293,0	2,85	51589,7	2,85
6	LUXEMBOURG	2	0,4	215,2	2,86	74154,0	2,85	51493,2	2,85
7	FINLAND	1	0,2	215,0	2,86	73209,0	2,81	50837,0	2,81
8	GREECE	17	3,7	169,3	2,25	58272,0	2,24	40464,6	2,24
9	SPAIN	18	4,0	99,8	1,33	34406,0	1,32	23891,8	1,32
10	SLOVAKIA	1	0,2	89,1	1,18	30564,0	1,17	21223,9	1,17
11	PANAMA	2	0,4	85,1	1,13	29358,0	1,13	20386,5	1,13
12	NETHERLAND	8	1,8	83,4	1,11	28960,0	1,11	20110,1	1,11
13	CHINA	28	6,2	83,8	1,11	28793,0	1,10	19994,1	1,10
14	AUSTRIA	18	4,0	65,8	0,87	23472,0	0,90	16299,2	0,90
15	HUNGARY	35	7,7	38,7	0,51	13561,0	0,52	9416,9	0,52
16	FRANCE	16	3,5	21,2	0,28	7438,0	0,29	5165,0	0,29
17	HONG KONG	2	0,4	15,0	0,20	5267,0	0,20	3657,5	0,20
18	CROATIA	2	0,4	10,5	0,14	3673,0	0,14	2550,6	0,14
19	SERBIA	3	0,7	6,0	0,08	2095,0	0,08	1454,8	0,08
20	A.R. OF SYRIA	5	1,1	5,3	0,07	1824,0	0,07	1266,6	0,07
21	U.S.A.	12	2,6	5,2	0,07	1776,0	0,07	1233,3	0,07
22	SEYCHELLES	2	0,4	4,4	0,06	1544,0	0,06	1072,2	0,06
23	CZECH REPUBLIC	1	0,2	4,0	0,05	1412,0	0,05	980,5	0,05
24	GREAT BRITAIN	9	2,0	4,1	0,05	1408,0	0,05	977,7	0,05
25	ISRAEL	13	2,9	3,7	0,05	1306,0	0,05	906,9	0,05
26	MOLDAVIA	10	2,2	3,2	0,04	1111,0	0,04	771,5	0,04
27	BELGIUM	9	2,0	3,2	0,04	1094,0	0,04	759,7	0,04
28	MAURITIUS	1	0,2	3,0	0,04	1025,0	0,04	711,8	0,04
29	IRAN	3	0,7	2,3	0,03	802,0	0,03	556,9	0,03
30	BULGARIA	13	2,9	2,1	0,03	740,0	0,03	513,9	0,03
31	SWEDEN	4	0,9	1,2	0,02	411,0	0,02	285,4	0,02
32	INDIA	2	0,4	0,7	***	244,0	***	169,4	***
33	LEBANON	4	0,9	0,7	***	237,0	***	164,6	***
34	NORWAY	1	0,2	0,6	***	224,0	***	155,5	***
35	IRAQ	5	1,1	0,6	***	212,0	***	147,2	***
36	CANADA	5	1,1	0,6	***	212,0	***	148,4	***
37	JORDAN	4	0,9	0,5	***	166,0	***	116,2	***
38	MACEDONIA	2	0,4	0,4	***	140,0	***	98,0	***
39	SLOVENIA	2	0,4	0,4	***	140,0	***	98,0	***
40	MALAYSIA	2	0,4	0,3	***	103,0	***	72,1	***
41	UKRAINE	1	0,2	0,3	***	88,0	***	61,6	***
42	EGYPT	1	0,2	0,2	***	70,0	***	49,0	***
43	DOMINICAN REPUBLIC	1	0,2	0,2	***	70,0	***	49,0	***
44	MALTA	1	0,2	0,2	***	69,0	***	48,3	***
45	PERU	1	0,2	0,2	***	69,0	***	48,3	***
46	PAKISTAN	1	0,2	0,2	***	69,0	***	48,3	***
47	PORTUGAL	1	0,2	0,2	***	68,0	***	47,6	***
48	IRELAND	1	0,2	0,2	***	68,0	***	47,6	***
49	LATVIA	1	0,2	0,2	***	60,0	***	42,0	***
50	INDONESIA	1	0,2	0,2	***	55,0	***	38,5	***

\*) on countries selected upon the amount of the foreign direct investment, in equivalent of currency, ranking by a descending scale (col 4)

\*\*\* Less than 0.01%

Table no. 19

**Classification\* by investors' countries of origin according to the amount  
of the increase in the issued capital, during January 2010**

No. crt.	Countries	Number of companies		Amount of subscribed capital					
				Total in local currency		Total in equivalent of currency		Total in equivalent of currency	
		No.	%	mii RON	%	USD	%	EURO	%
0	1	2		3		4		5	
	<b>Total ROMANIA</b>	<b>1109</b>	<b>100,0</b>	<b>2790751,7</b>	<b>100,0</b>	<b>875119373,0</b>	<b>100,0</b>	<b>607690741,0</b>	<b>100,0</b>
1	LUXEMBOURG	28	2,52	566250,0	20,29	187815564,0	21,46	130420812,0	21,46
2	NETHERLAND	64	5,77	427861,9	15,33	155695894,0	17,79	108116625,1	17,79
3	GERMANY	75	6,76	345714,4	12,39	88851069,0	10,15	61698979,2	10,15
4	SWITZERLAND	21	1,89	225919,8	8,10	79440920,0	9,08	55164487,3	9,08
5	CYPRUS	85	7,66	206568,5	7,40	71792274,0	8,20	49853198,9	8,20
6	GREECE	27	2,43	138161,7	4,95	42693677,0	4,88	29646872,2	4,88
7	AUSTRIA	47	4,24	166972,1	5,98	39472770,0	4,51	27410245,5	4,51
8	SPAIN	60	5,41	128811,4	4,62	38179527,0	4,36	26512206,0	4,36
9	DENMARK	20	1,80	94728,6	3,39	31696977,0	3,62	22010665,1	3,62
10	FRANCE	52	4,69	130447,8	4,67	24386900,0	2,79	16934482,1	2,79
11	ITALY	140	12,62	53866,9	1,93	20507928,0	2,34	14240889,1	2,34
12	HUNGARY	57	5,14	56887,9	2,04	19966119,0	2,28	13864652,1	2,28
13	POLAND	8	0,72	34535,9	1,24	10984344,0	1,26	7627627,0	1,26
14	GREAT BRITAIN	23	2,07	52996,1	1,90	10295153,0	1,18	7149046,6	1,18
15	BULGARIA	11	0,99	24092,7	0,86	8386928,0	0,96	5823958,0	0,96
16	SOUTH KOREA	1	0,09	21116,0	0,76	7085906,0	0,81	4920516,7	0,81
17	SWEDEN	9	0,81	19903,8	0,71	6001643,0	0,69	4167594,7	0,69
18	FINLAND	2	0,18	17451,7	0,63	5970314,0	0,68	4145839,6	0,68
19	BELGIUM	17	1,53	17351,1	0,62	5331365,0	0,61	3702147,7	0,61
20	CHINA	92	8,30	13870,3	0,50	4477499,0	0,51	3109215,5	0,51
21	LEBANON	16	1,44	11668,1	0,42	3887380,0	0,44	2699431,5	0,44
22	TURKEY	61	5,50	10296,8	0,37	3479147,0	0,40	2415950,9	0,40
23	PORTUGAL	6	0,54	6287,5	0,23	2298189,0	0,26	1595883,1	0,26
24	NORWAY	3	0,27	6954,1	0,25	2256235,0	0,26	1566749,8	0,26
25	SLOVAKIA	7	0,63	2225,7	0,08	763709,0	0,09	530326,4	0,09
26	MOLDAVIA	52	4,69	1572,2	0,06	503698,0	0,06	349772,4	0,06
27	U.S.A.	23	2,07	1379,1	0,05	498062,0	0,06	345858,7	0,06
28	BERMUDE ISLANDS	1	0,09	1233,1	0,04	431158,0	0,05	299400,0	0,05
29	UKRAINE	2	0,18	1126,5	0,04	400068,0	0,05	277810,8	0,05
30	CROATIA	2	0,18	1030,5	0,04	352456,0	0,04	244748,6	0,04
31	IRAN	12	1,08	752,3	0,03	276650,0	0,03	192108,2	0,03
32	I.VIRGINE BRIT.	4	0,36	483,4	0,02	152310,0	0,02	105765,4	0,02
33	JORDAN	4	0,36	435,4	0,02	148264,0	0,02	102955,9	0,02
34	MONACO	1	0,09	411,5	0,01	141686,0	0,02	98388,0	0,02
35	CAYMAN ISLANDS	1	0,09	395,0	0,01	135098,0	0,02	94544,0	0,02
36	MACEDONIA	1	0,09	264,0	***	90293,0	0,01	63188,6	0,01
37	ANTILELE OLANDEZE	1	0,09	54,0	***	53950,0	***	37755,2	***
38	A.R. OF SYRIA	11	0,99	144,5	***	51844,0	***	36281,3	***
39	MOROCCO	1	0,09	95,0	***	32312,0	***	22612,5	***
40	ISRAEL	40	3,61	51,6	***	26660,0	***	18657,1	***
41	PANAMA	3	0,27	69,1	***	24210,0	***	16942,6	***
42	PALESTINA	2	0,18	19,9	***	23711,0	***	16593,4	***
43	IRAQ	24	2,16	64,4	***	20566,0	***	14392,5	***
44	SLOVENIA	3	0,27	6,6	***	20440,0	***	14304,3	***
45	VIETNAM	1	0,09	52,8	***	18883,0	***	13214,7	***
46	CANADA	8	0,72	26,8	***	9448,0	***	6611,9	***
47	CZECH REPUBLIC	5	0,45	9,8	***	3892,0	***	2723,7	***
48	EGYPT	11	0,99	5,2	***	1821,0	***	1274,4	***
49	INS. VIRGINE AMR.	1	0,09	3,6	***	1804,0	***	1262,5	***
50	KAZAHSTAN	1	0,09	4,2	***	1422,0	***	995,1	***

\*) on countries selected upon the amount of the foreign direct investment, in equivalent of currency, ranking by a descending scale (col 4)

\*\*\* Less than 0,01%

Table no. 20

**Classification of the top 40 companies by foreign direct investment  
in the total subscribed capital, in equivalent of currency,  
during January 2010**

No. crt.	Companies	County	Country of origin of the majority investor	Amount of subscribed capital		
				Total in local currency	Total in equivalent of currency	Total in equivalent of currency
				thousand RON	thousand USD	thousand EURO
0	1	2	3	4	5	6
1	PROLOGIS JOITA ROMANIA SRL	BUCURESTI	LUXEMBURG	241500,0	82665,8	57403,9
2	ADEVARUL HOLDING SRL	BUCURESTI	ELVETIA	212469,0	74485,2	51723,2
3	FORTIS LEASE ROMANIA IFN SA	BUCURESTI	LUXEMBURG	95000,0	32413,3	22508,1
4	EXPO MARKET DORALY SRL	ILFOV	LUXEMBURG	80749,4	27475,7	19079,4
5	LEAR CORPORATION ROMANIA SRL	ARGES	OLANDA	74397,8	26264,4	18238,2
6	OBI ROMANIA SRL	BUCURESTI	GERMANIA	72802,3	25473,2	17688,8
7	MEDIA PRO PICTURES SA	ILFOV	OLANDA	70525,7	23305,4	16183,5
8	BCR ASIGURARI VIENNA INSURANCE GROUP SA	BUCURESTI	AUSTRIA	65264,9	22801,6	15833,6
9	SPRIDER STORES SRL	BUCURESTI	GRECIA	38289,2	22701,7	15764,3
10	GLOBAL CITY BUSINESS PARK SRL	BUCURESTI	CIPRU	59598,4	20917,6	14525,4
11	MIDIA MARINE TERMINAL SRL	CONSTANTA	OLANDA	57382,0	20000,0	13888,2
12	AGRI CONSORTIUM SRL	BUCURESTI	DANEMARCA	55706,0	18912,9	13133,3
13	AIR LIQUIDE ROMANIA SRL	BUCURESTI	FRANTA	49986,7	17130,5	11895,5
14	ING REAL ESTATE PFCEE HOLDING SRL	BUCURESTI	LUXEMBURG	49020,0	16505,3	11461,4
15	TEMESTATE SRL	BUCURESTI	OLANDA	46250,6	16044,0	11141,1
16	IOG A1 INDUSTRIAL BETA SRL	BUCURESTI	LUXEMBURG	50150,1	15205,1	10558,6
17	CERNAVODA POWER SRL	BUCURESTI	SPANIA	40317,2	14399,0	9998,8
18	MICROCOM DOI SRL	BUCURESTI	OLANDA	39345,0	14011,8	9730,0
19	PROCTER & GAMBLE MARKETING ROMANIA SRL	BUCURESTI	GERMANIA	25771,2	12892,0	8952,3
20	INTERTOP SRL	BUCURESTI	AUSTRIA	21031,2	11588,5	8047,2
21	RENOVATIO POWER SRL	BUCURESTI	SPANIA	28650,1	11460,0	7957,9
22	BANVIT FOODS SRL	BUCURESTI	OLANDA	32662,9	10794,9	7496,1
23	OTP BANK ROMANIA SA	BUCURESTI	UNGARIA	30000,0	10349,5	7186,8
24	PREMIUM AEROTEC SRL	BUCURESTI	GERMANIA	30078,5	10182,6	7070,9
25	ROMENERGO SA	BUCURESTI	CIPRU	29574,9	10019,7	6957,8
26	AMERICAN EUROPEAN MARKETING & ENTERPRISES SA	BRASOV	GERMANIA	23100,0	10000,0	6944,1
27	BELLA ROMANIA IMPEX SRL	BUCURESTI	POLONIA	31534,5	9991,1	6937,9
28	SWAN PROPERTY SRL	BUCURESTI	CIPRU	25747,0	8959,5	6221,6
29	OTP LEASING ROMANIA IFN SA	BUCURESTI	UNGARIA	23704,3	8528,0	5921,9
30	GENAGRICOLA ROMANIA SRL	TIMIS	ITALIA	23800,0	8150,7	5659,9
31	EUROINS ROMANIA ASIGURARE-REASIGURARE SA	BUCURESTI	BULGARIA	21989,4	7651,9	5313,6
32	OLYMPUS DAIRY INDUSTRY SA	COVASNA	GRECIA	63555,1	7235,5	5024,4
33	HANJIN ROMANIA SRL	CONSTANTA	COREEA SUD	21116,0	7085,9	4920,5
34	ISTA ROMANIA SRL	BUCURESTI	GERMANIA	20770,1	7051,7	4896,8
35	SWAN PROPERTY CONSTANTA SRL	BUCURESTI	CIPRU	20845,4	6891,5	4785,5
36	FATA ASIGURARI SA	BUCURESTI	ITALIA	16900,0	5865,6	4073,1
37	GEORGIA PACIFIC BALKANS SRL	ILFOV	GRECIA	17000,0	5862,1	4070,7
38	AGRO INVESTMENTS MOLDOVA SRL	VRANCEA	DANEMARCA	15057,4	5293,2	3675,7
39	WALTER SERVICES ROMANIA SRL	ILFOV	GERMANIA	17978,8	5237,0	3636,7
40	HERVIS SPORTS AND FASHION SRL	ILFOV	AUSTRIA	15050,0	5223,9	3627,5

Table no. 21

**Number of registered companies with foreign investment capital  
and amount of subscribed capital,  
between 1991 and 2009**

balance account at 30 Sept 2004	Number of companies		Amount of subscribed capital					
			Total on ROL		Total on currency			
	No.	%	thousand RON	%	thousands USD	%	thousands EURO	%
0	1		2		3		4	
<b>1991 - 2006, out of which:</b>	<b>147663</b>	<b>89,4</b>	<b>48392059,2</b>	<b>84,0</b>	<b>23173116,8</b>	<b>12,6</b>	<b>17739208,0</b>	<b>86,5</b>
<b>1991</b>	5499	3,7	258165,5	0,5	1058260,8	4,6	817975,6	4,6
<b>1992</b>	11765	8,0	65153,0	0,1	573271,2	2,5	443106,2	2,5
<b>1993</b>	10583	7,2	92793,2	0,2	417844,8	1,8	322970,3	1,8
<b>1994</b>	11053	7,5	230535,9	0,5	881673,3	3,8	681483,5	3,8
<b>1995</b>	3400	2,3	67893,9	0,1	237717,0	1,0	183741,8	1,0
<b>1996</b>	3630	2,5	229256,3	0,5	573594,2	2,5	443355,8	2,5
<b>1997</b>	5251	3,6	232229,8	0,5	359912,8	1,6	278192,2	1,6
<b>1998</b>	8801	6,0	728612,4	1,5	755475,3	3,3	583939,6	3,3
<b>1999</b>	7383	5,0	1214843,7	2,5	944365,3	4,1	729940,9	4,1
<b>2000</b>	8567	5,8	1870247,9	3,9	839143,8	3,6	648610,6	3,7
<b>2001</b>	7175	4,9	4820820,8	10,0	1540810,8	6,6	1190959,4	6,7
<b>2002</b>	7518	5,1	3541822,9	7,3	1078746,2	4,7	833809,6	4,7
<b>2003</b>	6609	4,5	4441402,8	9,2	1288885,0	5,6	996235,1	5,6
<b>2004</b>	10167	6,9	9040577,5	18,7	3032218,4	13,1	2343732,9	13,2
<b>2005</b>	11719	7,9	7173157,1	14,8	3149681,6	13,6	2434525,4	13,7
<b>2006</b>	12823	8,7	6646972,2	13,7	3127314,6	13,5	2417237,0	13,6
<b>2007</b>	15720	10,6	7737574,2	16,0	3314201,6	14,3	2389392,2	13,5
<b>2008</b>	12264	8,3	15034925,8	31,1	5924852,8	25,6	3984432,8	22,5
<b>2009</b>	6801	4,6	15303310,6	31,6	4817293,2	20,8	3512610,5	19,8

Diagram no. 9

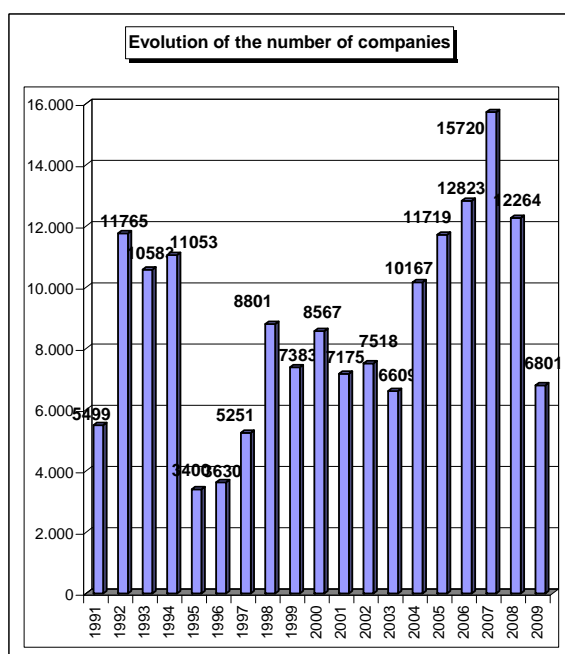


Diagram no. 10

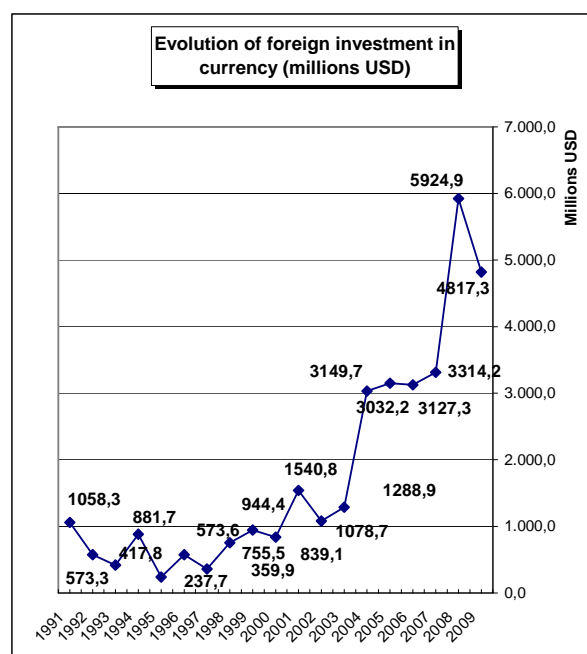


Table no. 22

**Number of registered companies, with foreign capital investment  
and the value of the invested capital,  
- balance account at 31 December 2009**

balance account at 31 December	Number of companies		Amount of subscribed capital						Order by:	
			Total on ROL		Total on currency		Total on currency			
	No.	%	thousand RON	%	thousands USD	%	thousands EUR	%		
0	1		2		3		4		5	
<b>Total ROMANIA</b>	<b>166728</b>	<b>100,0</b>	<b>78730295,5</b>	<b>100,0</b>	<b>33915262,8</b>	<b>100,0</b>	<b>25236251,3</b>	<b>100,0</b>	*	**
ALBA	1558	0,9	402172,7	0,5	194084,5	0,6	138943,2	0,6	19	26
ARAD	4920	3,0	2134160,9	2,7	786470,8	2,3	563026,8	2,2	7	14
ARAD	1774	1,1	3539962,2	4,5	918267,7	2,7	657379,0	2,6	17	3
ARAD	1433	0,9	2357794,7	3,0	792116,1	2,3	567068,3	2,2	23	6
ARAD	5927	3,6	1209241,6	1,5	468966,0	1,4	335728,2	1,3	4	12
BISTRITA-NASAUD	1081	0,6	481147,9	0,6	360699,4	1,1	258221,3	1,0	25	37
BOTOSANI	479	0,3	83730,7	0,1	33735,8	0,1	24151,1	0,1	36	42
BRASOV	5036	3,0	2647914,5	3,4	941521,7	2,8	674026,3	2,7	6	10
BRAILA	813	0,5	382724,2	0,5	149015,4	0,4	106678,7	0,4	29	31
BUZAU	964	0,6	546619,0	0,7	153202,9	0,5	109676,5	0,4		29
CARAS-SEVERIN	1330	0,8	452196,7	0,6	171415,0	0,5	122714,4	0,5	21	21
CALARASI	459	0,3	868820,0	1,1	398147,8	1,2	285030,1	1,1	38	15
CLUJ	6569	3,9	2411849,7	3,1	1012311,0	3,0	724703,7	2,9	3	9
CONSTANTA	5536	3,3	2260834,1	2,9	851879,6	2,5	609852,4	2,4	5	8
COVASNA	1003	0,6	173668,2	0,2	86332,0	0,3	61804,2	0,2	27	32
DAMBOVITA	1040	0,6	709389,3	0,9	263876,3	0,8	188906,5	0,7	26	18
DOLJ	1977	1,2	2025263,3	2,6	620422,8	1,8	444154,7	1,8	16	17
GALATI	1330	0,8	2488811,9	3,2	804568,9	2,4	575983,1	2,3	22	7
GIURGIU	611	0,4	287534,7	0,4	139229,2	0,4	99672,9	0,4	34	38
GORJ	443	0,3	94727,0	0,1	110126,2	0,3	78838,3	0,3	41	41
HARGHITA	2587	1,6	233069,7	0,3	132084,7	0,4	94558,1	0,4	12	28
HUNEDOARA	1749	1,0	504846,2	0,6	210464,7	0,6	150669,7	0,6	18	22
IALOMITA	463	0,3	233519,3	0,3	92237,6	0,3	66032,0	0,3	37	40
IASI	2413	1,4	521667,3	0,7	314957,3	0,9	225474,9	0,9	13	20
MARAMURES	2189	1,3	329011,4	0,4	91627,6	0,3	65595,3	0,3	14	27
MEHEDINTI	724	0,4	184270,2	0,2	76040,5	0,2	54436,7	0,2	30	33
MURES	3398	2,0	2607980,1	3,3	1061498,0	3,1	759916,2	3,0	10	4
NEAMT	1235	0,7	331103,9	0,4	121795,1	0,4	87191,9	0,3	24	24
OLT	575	0,3	1117641,6	1,4	422981,6	1,2	302808,5	1,2	35	19
PRAHOVA	2972	1,8	1978615,7	2,5	577320,5	1,7	413298,2	1,6	11	11
SALAJ	704	0,4	448172,9	0,6	173764,3	0,5	124396,2	0,5	31	23
SATU MARE	2147	1,3	308376,9	0,4	136955,9	0,4	98045,4	0,4	15	25
SIBIU	3459	2,1	796326,5	1,0	349402,1	1,0	250133,6	1,0	9	16
SUCEAVA	1393	0,8	1030341,9	1,3	419928,6	1,2	300622,8	1,2	20	13
TELEORMAN	394	0,2	211758,6	0,3	65803,5	0,2	47108,1	0,2	40	36
TIMIS	10666	6,4	3226444,9	4,1	1329888,7	3,9	952054,5	3,8	2	5
TULCEA	404	0,2	151890,3	0,2	57226,1	0,2	40967,6	0,2	39	34
VASLUI	328	0,2	126258,7	0,2	48484,5	0,1	34709,6	0,1	42	39
VALCEA	722	0,4	188624,9	0,2	72991,6	0,2	52254,0	0,2	32	30
VRANCEA	606	0,4	168132,3	0,2	76601,9	0,2	54838,6	0,2	33	35
MUN. BUCURESTI	78234	46,9	32409815,0	41,2	15013910,0	44,3	10748313,2	42,6	1	1
ILFOV	5083	3,0	6063864,0	7,7	3812908,6	11,2	2729624,5	10,8	8	2

\*) number of companies

Table no. 23

**Number of registered companies, with foreign capital investment  
and the value of the invested capital, on economic development areas,  
- balance account at 31 December 2009**

Economic development areas	Number of companies		Amount of subscribed capital						Order by:	
			Total on ROL		Total on currency		Total on currency			
	No.	%	thousand RON	%	thousands US\$	%	thousands EUR	%		
<b>Total ROMANIA</b>	<b>166728</b>		<b>78730295,5</b>		<b>33915262,8</b>		<b>25236251,2</b>		*	**
NORTH-EAST	7281	4,4	4460881,2	5,7	1743919,6	5,1	1248455,2	4,9	7	7
SOUTH-EAST	9653	5,8	5999011,8	7,6	2092494,9	5,1	1497996,9	5,9	5	3
SOUTH-MUNTENIA	7713	4,6	7829599,8	9,9	2454882,7	6,2	1757426,8	7,0	6	2
SOUTH-WEST OLTEN	4441	2,7	3610526,9	4,6	1302562,8	7,2	932492,1	3,7	8	8
WEST	18665	11,2	6317648,7	8,0	2498239,2	3,8	1788465,3	7,1	2	4
NORTH-WEST	18617	11,2	5187800,4	6,6	2244324,2	7,4	1606690,1	6,4	3	5
CENTER	17041	10,2	6861131,7	8,7	2764922,9	6,6	1979381,6	7,8	4	6
BUCHAREST-ILFOV	83317	50,0	38463695,0	48,9	18813916,5	8,2	14425343,2	57,2	1	1

Table no. 24

**Number of registered companies, with foreign capital investment  
and the value of the invested capital, on continents  
- balance account at 31 December 2009**

Continent	Number of companies		Amount of subscribed capital						Order by:	
			Total on ROL		Total on currency		Total on currency			
	No.	%	thousand RON	%	thousands US\$	%	thousands EUR	%		
<b>Total ROMANIA</b>	<b>166728</b>	<b>100,0</b>	<b>78730295,5</b>	<b>100,0</b>	<b>33915262,8</b>	<b>100,0</b>	<b>25236250,6</b>		*	**
EUROPE	116135	69,7	69830468,6	88,7	29681005,9	87,5	22204987,0	88,0	1	1
AFRICA	2520	1,5	102126,3	0,1	51966,6	0,2	37202,4	0,1	4	6
NORTH AMERICA	6015	3,6	2612271,2	3,3	1521712,7	4,5	1089379,4	4,3	3	3
SOUTH AMERICA	2489	1,5	774888,7	1,0	269532,8	0,8	192955,9	0,8	5	5
ASIA	38777	23,3	2866438,7	3,6	1580080,8	4,7	1131164,6	4,5	2	2
OCEANIA	792	0,5	2544101,9	3,2	810964,1	2,4	580561,3	2,3	6	4

Table no. 25

**Number of registered companies, with foreign capital investment  
and the value of the invested capital, on economic groups,  
- balance account at 31 December 2009**

Economic groups	Number of companies		Amount of subscribed capital						Order by:	
			Total on ROL		Total on currency		Total on currency			
	No.	%	thousand RON	%	thousands US\$	%	thousands EUR	%		
<b>Total ROMANIA</b>	<b>166728</b>		<b>78730295,5</b>		<b>33915262,8</b>		<b>25236250,6</b>		*	**
U.E.	97600	58,5	74898194,9	95,1	31091597,5	91,7	22258174,5	88,2	2	2
A.E.L.S.	2587	1,6	2806928,5	3,6	1244015,5	3,7	890578,7	3,5	4	3
O.E.C.D.	112473	67,5	67981989,8	86,3	29073292,3	85,7	20813289,2	82,5	1	1
C.E.F.T.A.	3973	2,4	123103,1	0,2	50502,5	0,1	36154,2	0,1	3	4

*Note: Each economic group's weight is calculated in total Romania.*

*The weights sum is different from 100% because each country may be part of one or many economic groups*

**Top 50 countries classification on foreign  
investment capital registered  
- balance account at 31 December 2009**

No. crt.	Countries	Number of companies		Amount of subscribed capital					
				Total on RON		Total on currency		Total on currency	
		No.	%	thousand RON	%	thousands USD	%	thousands EURO	%
0	1	2	3	4	5	6	7	8	9
	<b>Total ROMANIA, out of which:</b>	<b>166728</b>	<b>100,00</b>	<b>78730295,5</b>	<b>100,00</b>	<b>33915262,8</b>	<b>100,00</b>	<b>25236251,3</b>	<b>100,00</b>
1	HOLLANDE	3649	2,19	15891237,5	20,18	7016322,5	20,69	5022917,5	19,90
2	AUTRICHE	5672	3,40	11935956,1	15,16	5245878,6	15,47	3755473,9	14,88
3	ALLEMAGNE	17421	10,45	11100292,7	14,10	4335472,4	12,78	3103722,8	12,30
4	FRANCE	6191	3,71	8178531,9	10,39	3103262,8	9,15	2221595,9	8,80
5	GREECE	4761	2,86	5860558,4	7,44	2140077,5	6,31	1532060,8	6,07
6	CHYPRE	4495	2,70	4453358,3	5,66	2070297,2	6,10	1482105,8	5,87
7	ITALIE	28574	17,14	4158310,9	5,28	1941470,5	5,72	1389880,0	5,51
8	ETATS-UNIS	6015	3,61	2612271,2	3,32	1521712,7	4,49	1089379,4	4,32
9	SUISSE	2069	1,24	2364416,6	3,00	1026292,4	3,03	734712,8	2,91
10	ESPAGNE	3756	2,25	2415393,9	3,07	987283,9	2,91	706787,0	2,80
11	GRANDE-BRETAGNE	4122	2,47	2107376,5	2,68	866603,4	2,56	620393,0	2,46
12	TURQUIE	11487	6,89	1310251,1	1,66	772246,4	2,28	552843,7	2,19
13	LUXEMBOURG	644	0,39	2062832,8	2,62	746704,3	2,20	534558,4	2,12
14	HONGRIE	10142	6,08	1654440,8	2,10	742292,1	2,19	531399,8	2,11
15	ANTILLES NEERLANDAISES	15		2278952,1	2,89	715543,0	2,11	512250,3	2,03
16	CHINE	9756	5,85	1071262,1	1,36	701235,0	2,07	502007,4	1,99
17	REPUBLIQUE TCHEQUE	476	0,29	1332544,2	1,69	477992,2	1,41	342190,0	1,36
18	BELGIQUE	2346	1,41	820193,3	1,04	422600,8	1,25	302535,9	1,20
19	SUEDE	1154	0,69	758580,8	0,96	270691,2	0,80	193785,2	0,77
20	ISRAEL	5960	3,57	422043,0	0,54	220679,5	0,65	157982,3	0,63
21	JAPON	227	0,14	499328,1	0,63	171547,4	0,51	122809,1	0,49
22	DANEMARK	628	0,38	475890,4	0,60	165909,5	0,49	118773,0	0,47
23	FINLANDE	120	0,07	408034,3	0,52	153517,7	0,45	109901,8	0,44
24	PORTUGAL	370	0,22	490262,7	0,62	148847,6	0,44	106558,5	0,42
25	LIBAN	3537	2,12	270880,4	0,34	124266,3	0,37	88961,0	0,35
26	POLOGNE	532	0,32	457435,3	0,58	114256,7	0,34	81795,3	0,32
27	CANADA	1520	0,91	215702,5	0,27	108627,3	0,32	77765,2	0,31
28	LIECHTENSTEIN	193	0,12	144053,6	0,18	98724,1	0,29	70675,7	0,28
29	NORVEGE	282	0,17	264656,6	0,34	96376,0	0,28	68994,6	0,27
30	OCEANIE BRITANNIQUE	304	0,18	421445,2	0,54	96059,4	0,28	68768,0	0,27
31	GIBRALTAR	59	0,04	241800,6	0,31	86904,6	0,26	62214,1	0,25
32	SANS CITOYENNETE	24	0,01	909,6		75429,6	0,22	53999,3	0,21
33	COREE DU SUD	156	0,09	32030,5	0,04	71192,8	0,21	50966,2	0,20
34	REPUBLIQUE ARABE DE SYRIE	5407	3,24	93599,0	0,12	67161,3	0,20	48080,1	0,19
35	IRAK	5584	3,35	93751,3	0,12	53725,1	0,16	38461,2	0,15
36	SLOVENIE	151	0,09	131629,5	0,17	48861,4	0,14	34979,4	0,14
37	ILES MARSHALL	17	0,01	154395,9	0,20	48313,6	0,14	34587,2	0,14
38	SINGAPOUR	51	0,03	141985,0	0,18	46965,3	0,14	33622,0	0,13
39	REPUBLIQUE DE MOLDAVIE	3523	2,11	98484,2	0,13	41554,4	0,12	29748,4	0,12
40	IRLANDE	716	0,43	52018,9	0,07	36276,1	0,11	25969,7	0,10
41	JORDANIE	3120	1,87	51331,2	0,07	33655,9	0,10	24093,9	0,10
42	BULGARIE	1148	0,69	68178,6	0,09	26958,7	0,08	19299,4	0,08
43	PANAMA	168	0,10	39399,5	0,05	26052,7	0,08	18650,9	0,07
44	IRAN	2575	1,54	37188,3	0,05	24072,7	0,07	17233,4	0,07
45	AUSTRALIE	647	0,39	52425,5	0,07	22723,4	0,07	16267,4	0,06
46	ISLANDE	43	0,03	33801,7	0,04	22623,0	0,07	16195,6	0,06
47	EGYPTE	1357	0,81	54251,3	0,07	21692,9	0,06	15529,7	0,06
48	BELIZE	31	0,02	54871,5	0,07	18804,1	0,06	13461,6	0,05
49	MALTE	79	0,05	43375,3	0,06	15343,0	0,05	10983,9	0,04
50	ARABIE SAOUDITE	130	0,08	36862,7	0,05	13658,5	0,04	9778,0	0,04

\*\*\* Less than 0.01%