



MINISTRY OF JUSTICE

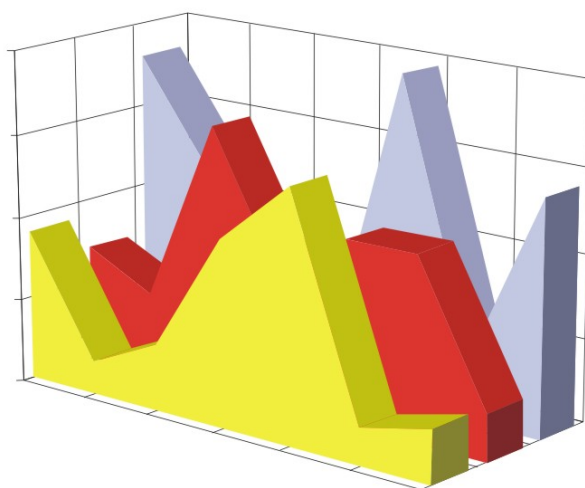
THE NATIONAL TRADE REGISTER OFFICE

Bucharest, 2, Octavian Goga Blvd., sector 3; Phone: +40 - 21 - 320.60.13; Fax: +40 - 21 - 320.58.29; Website: [www.onrc.ro](http://www.onrc.ro); E-mail: [onrc@onrc.ro](mailto:onrc@onrc.ro)

# COMPANIES BY FOREIGN DIRECT INVESTMENT

## STATISTICAL SYNTHESIS

**OF THE NATIONAL TRADE REGISTER'S DATA  
ON 31<sup>th</sup> OF DECEMBER 2005 - PROVISORY DATA**



- No. 92 -

**MINISTRY OF JUSTICE  
THE NATIONAL TRADE REGISTER OFFICE**

---

- Operations such as incorporation of companies, changes in statutory documents and strike-off dissolution of companies are being regulated by Law No.26/1990 reissued, Law No.31/1990, reissued, OUG No.76/2001, reissued and Methodology Norms No. P/608/1998.
  
- This synthesis presents the trends on operations regarding companies by foreign direct investment registered in The Trade Register Office attached to the law court of Bucharest and in The Trade Register Offices attached to the law court in each county of Romania.
  
- Information provided by the Central Trade Register concern operations compulsory by law to be registered in the trade registers attached to the law courts.

*• No part of the content of this publication, in original or in any modified format, September be reproduced, stored in a retrieval system, or transmitted, in any form or by any means, without the prior permission in writing of The Ministry of Justice – The National Trade Register Office.*

*• The content of this publication September be referred to in articles, studies, books, as supporting or explanatory data under the condition only, the source of the information to be clearly and precisely specified.*

*Printed: September 2005*

# Table of Contents

	Page
<b>1 Explanatory Note</b>	<b>1</b>
<b>2.1 Tables and statistical graphics for December 2005</b>	<b>3</b>
Table No.1 – Number of companies by foreign direct investment and the amount of the subscribed capital, balance account at 31 <sup>st</sup> of December 2005	3
Diagram No. 1 – The structure of the number of companies	3
Diagram No. 2 – The structure of investment, in equivalent of currency	3
Table No.2 – Classification of companies by foreign direct investment by the investors’ countries of origin, balance account at 31 <sup>st</sup> of December 2005	4
Diagram No. 3 – The structure upon sector of activity of companies by foreign direct investment, incorporated between 1991 and December 2005	5
Diagram No. 4 – The structure upon sector of activity in the amount of subscribed capital in companies by foreign direct investment, during 1991-December 2005	5
Table No. 3 – The number of companies by foreign direct investment and the amount of the subscribed capital, balance account at the end of each month of 2005	6
Diagram No. 5 – Trend in the number of companies’ balance account	6
Diagram No. 6 – Trend of foreign investment balance account, in equivalent of currency	6
Table No. 4 – Comparative data on new companies by foreign direct investment and the subscribed capital, between January– December 2004 and 2005	7
Diagram No. 7 – Dynamics of the number of new companies by foreign direct investment, between January– December and 2005	7
Diagram No. 8 – Dynamics of the amount of foreign direct investment in new companies, between January– December 2004 and 2005	7
Table No. 5 – Incorporation of companies by foreign direct investment, during December 2005	8
Table No. 6 – Statutory increase of the issued capital, in companies by foreign direct investment during December 2005	9
Table No. 7 – Strike-off of companies by foreign direct investment, from the trade register, during December 2005	10
Table No. 8 – Changes by cession in the issued capital of the companies by foreign direct investment, during December 2005	11
Table No. 9 – Incorporation of companies by foreign direct investment, according to the development regions, during December 2005	12
Table No. 10 – Statutory increase in the issued capital of companies by foreign direct investment according to the development regions, during December 2005	12
Table No. 11 – Strike-off of companies by foreign direct investment and the amount of their issued capital, according to the development regions, during December 2005	12
Table No. 12 – Incorporation of companies by foreign direct investment, by continents according to the investors’ country of origin, during December 2005	13
Table No. 13 – Increase in the issued capital of companies by foreign direct investment, by continents according to the investors’ country of origin, during December 2005	13
Table No. 14 – Strike-off of companies by foreign direct investment and their issued capital, by continents according to the investors’ country of origin, during December 2005	13
Table No. 15 – Incorporation of companies by foreign direct investment, by economical groups of countries according to the investors’ country of origin, during December 2005	14
Table No. 16 – Increase in the issued capital of companies by foreign direct investment, by economical groups of countries according to the investors’ country of origin, during December 2005	14
Table No. 17 – Strike-off of companies by foreign direct investment and their issued capital, by economical groups of countries according to the investors’ country of origin, during December 2005	14

---

Table No. 18 – Classification by countries of origin of investors in companies by foreign direct investment, incorporated during December 2005	15
Table No. 19 – Classification by investors’ countries of origin according to the amount of the increase in the issued capital, during December 2005	16
Table No. 20 – Classification of the top 40 companies by foreign direct investment in the total subscribed capital, in equivalent of currency, during December 2005	17
<b>2.2 Cumulative data for 1991 – 2004</b>	<b>18</b>
Table No. 21 – Number of registered companies with foreign investment capital and amount of subscribed capital, between 1991 and 2004	18
Diagram No. 9 – Evolution of the number of companies	18
Diagram No. 10 – Evolution of foreign investment	18
Table No. 22 – Number of registered companies, with foreign capital investment and the value of the invested capital, between 1991 and 2004	19
Table No. 23 – Number of registered companies, with foreign capital investment and the value of the invested capital, on economic development areas, between 1991 and 2004	20
Table No. 24 – Number of registered companies, with foreign capital investment and the value of the invested capital, on continents between 1991 and 2004	20
Table No. 25 – Number of registered companies, with foreign capital investment and the value of the invested capital, on economic groups, between 1991 and 2004	20
Diagram No. 11 – Percentage of companies with foreign investment, between 1991 and 2004, on fields of activity	21
Diagram No. 12– Percentage of foreign currency invested capital in companies with foreign investment, between 1991 and 2004, on fields of activity	21
Table No. 26 – Countries classification on foreign investment capital registered between 1991 and December 2004	22

## Explanatory Note

- “**Company by foreign direct investment**” should be understood as any company partially or entirely set-up with the contribution in issued capital of physical or legal persons, resident or having the registered office outside Romania’s state frontiers.

- “**Foreign investor**” is any physical or legal person resident or having the business headquarter outside Romania’s borders, being associate/shareholder in a company registered in Romania.

- “**Social capital**” known as well as “issued capital” or “initial capital” is the total contribution in cash and assets subscribed by shareholders/associates while setting-up and registering a company or while increasing the initial capital during the company’s life.

The capital *subscribed* by a foreign investor should be, due to the Romanian legislation in force, in local currency ROL or/and in other convertible currency.

**The increase in capital** by changes in the statutory documents includes:

- foreign investors’ contributions from new own resources, in cash and/or assets, in ROL and/or currency;
- contributions of foreign investors from dividends obtained in Romania;
- getting in possession of equities/shares by a non-resident person from a resident one.

**The changes in capital by decrease/(increase) through cession** include:

- the contributions in capital of non-resident associates/shareholders yielded to/(received from) resident associates/shareholders, in ROL/currency;

- The **foreign direct investment in Romania ( Is )** equals to the total value of the direct foreign investment subscribed in the new registered company ( **I** ) *plus* the increase in issued capital through statutory documents( **M** ), *plus/minus* the cession of the issued capital *by/to* resident associates/shareholders ( **C** ), *minus* the subscribed capital in the companies being struck-off from the Trade Register ( **R** ), that is:

$$\mathbf{Is = I + M \pm C - R}$$

### Usual Terms:

- **incorporation** – represents the registration of the company in the trade registry awarding the quality of legal person.

- **other statutory documents** – represent the official registration of the changes occurred in a company’s life, such as: changes of the registered office address, increase or decrease of the issued capital, merger, liquidation, strike-off, etc.

- **strike-off** – represents the removal of a company from the trade registry, due to dissolution and liquidation, being also the very moment the company loses its quality of legal person. Data also include the companies under the provisions of Law No. 314/2001.

- **Operations** represent all the records in the trade registry including incorporations, other statutory documents and strike-off of companies by foreign direct investment, irrespective of the object of activity and the company’s type.

• **Terms used in tables and charts**

➤ **Number of companies:** depending on the specific table represents either the number of companies incorporated in the reference period, or the number of companies registering an increase of the issued capital, or the number of companies being struck-off from the trade registry.

➤ **Amount of the subscribed capital:**

- **total, in ROL:** the amount of the subscribed capital resulted from adding the amount subscribed in the local currency/ROL and the amount subscribed in foreign convertible currency being expressed in ROL, according to the exchange rate communicated by the National Bank of Romania at the date the deed was issued.

- **total, in equivalent of currency:**

**USD** : the amount of the resulted from adding and expressing in USD the convertible currency and the local currency (ROL), according to the exchange rate communicated by the National Bank of Romania at the date the deed was issued.

**Euro** : the balance account registered in the end of each month, calculated in equivalent of USD and expressed in Euro according to the exchange rate EUR/USD communicated by National Bank of Romania in the last working day of the due month.

➤ **Regional development:**

<i>North-East:</i>	Suceava, Botoșani, Neamț, Iași, Bacău, Vaslui.
<i>South-East:</i>	Vrancea, Galați, Buzău, Brăila, Tulcea, Constanța.
<i>South-Muntenia:</i>	Argeș, Dâmbovița, Prahova, Teleorman, Giurgiu, Călărași, Ialomița.
<i>South-West Oltenia:</i>	Gorj, Vâlcea, Dolj, Mehedinți, Olt.
<i>West:</i>	Arad, Caraș-Severin, Hunedoara, Timiș.
<i>North-West:</i>	Bihor, Bistrița, Cluj, Satu Mare, Sălaj, Maramureș.
<i>Center:</i>	Alba, Brașov, Covasna, Harghita, Mureș, Sibiu.
<i>Bucharest-Ilfov:</i>	București, Ilfov.

Source:

The integrated IT system of the trade registry is designed by The National Trade Registry Office according to the provisions of the related legislation in force. The source of information is the computerised system of the trade registers handled by the Trade Register Offices attached to the law courts.

Table no. 1

**Number of companies by foreign direct investment  
and the amount of the subscribed capital,  
balance account at 31 December 2005**

Balance account by end of period	Number of companies		Amount of subscribed capital					
			Total in ROL		Total in currency		Total in currency	
	No.	%	mii RON	%	thousand USD	%	thousand EURO	%
0	1	2	3	4				
31 December 2005, out of which	119120	110,9	34007512,8	126,7	16731600,5	123,2	12906836,9	126,0
at 31 December 2004	107401	100,0	26834355,7	100,0	13581918,9	100,0	10244798,7	100,0

*Note: column No. 1 shows the number of companies incorporated in the due period. The data concerning the amount of the subscribed capital include the records on the issued capital in companies incorporated in the related period plus the records of increase in capital and minus the subscribed capital in companies being struck-off from the trade register in the same period. The percentage inserted in column No. 1,2,3 and 4 shows the trend compared to the records of December 2004.*

Diagram no. 1

Diagram no. 2

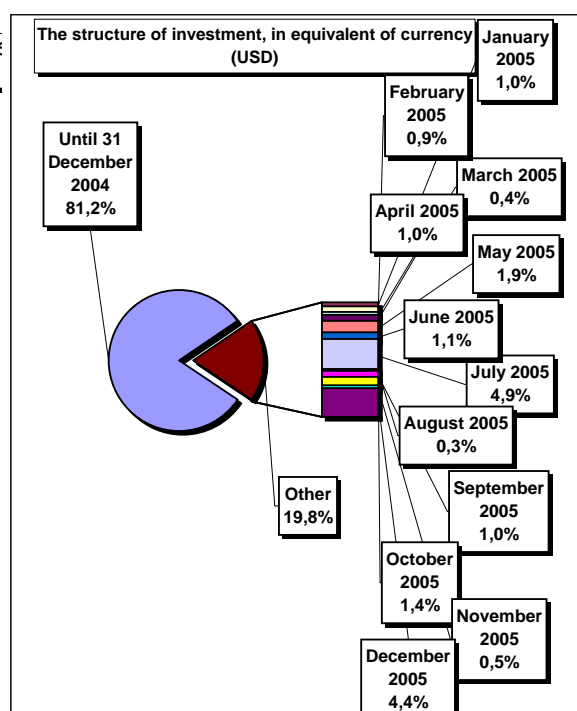
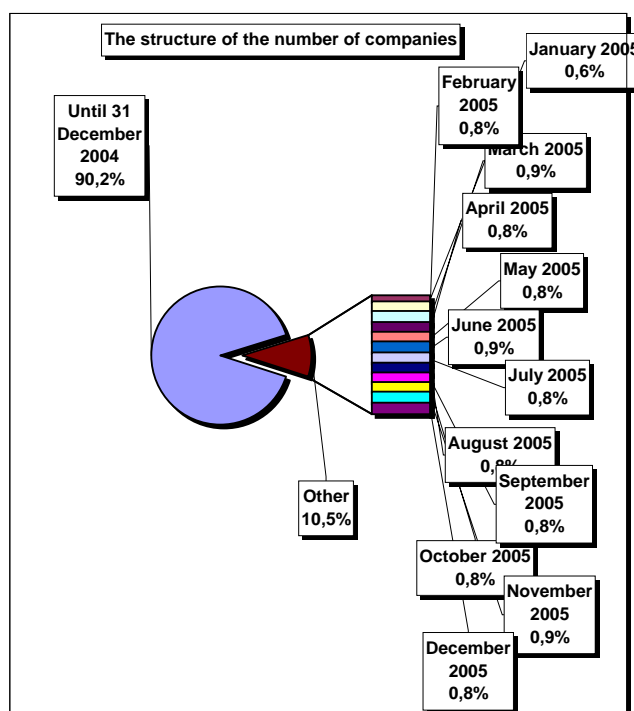


Table no. 2

**Classification\* of companies by foreign direct investment  
by the investors' countries of origin,  
balance account at 31 December 2005**

No. crt.	Countries	Companies by foreign investment		Amount of subscribed capital					
				Total in local currency		Total in equivalent of currency		Total in equivalent of currency	
		No.	%	mii RON	%	thousand USD	%	thousand EURO	%
0	1	2		3		4		5	
	<b>Total ROMANIA</b>	<b>119120</b>	<b>100,0</b>	<b>34007512,82</b>	<b>100,0</b>	<b>16731600,5</b>	<b>100,0</b>	<b>12906836,9</b>	<b>100,0</b>
1	NETHERLAND	2288	1,92	9230921,6	27,14	2808733,5	16,79	2373876,7	18,39
2	AUSTRIA	3578	3,00	4315172,4	12,69	2457052,5	14,69	2076644,0	16,09
3	GERMANY	12898	10,83	3151712,0	9,27	1614359,6	9,65	1364419,5	10,57
4	FRANCE	4060	3,41	3289159,8	9,67	1600351,5	9,56	1352580,1	10,48
5	ITALY	18747	15,74	1706355,6	5,02	982919,4	5,87	830740,8	6,44
6	U.S.A.	4411	3,70	924792,0	2,72	846288,8	5,06	715263,7	5,54
7	ANTILELE OLANDEZE	11	***	1965293,2	5,78	722151,2	4,32	610345,5	4,73
8	GREAT BRITAIN	2203	1,85	1360500,9	4,00	683978,1	4,09	578082,5	4,48
9	GREECE	3164	2,66	1340805,8	3,94	647927,4	3,87	547613,3	4,24
10	CYPRUS	1712	1,44	967611,0	2,85	624073,2	3,73	527452,2	4,09
11	TURKEY	8989	7,55	578407,4	1,70	520217,6	3,11	439675,9	3,41
12	SWITZERLAND	1515	1,27	695924,9	2,05	473487,0	2,83	400180,3	3,10
13	HUNGARY	5631	4,73	647340,2	1,90	470885,8	2,81	397981,8	3,08
14	I.VIRGINE BRIT.	228	0,19	1062483,8	3,12	404940,8	2,42	342246,6	2,65
15	SPAIN	1214	1,02	264310,0	0,78	237009,3	1,42	200314,8	1,55
16	CHINA	8155	6,85	450352,9	1,32	209629,8	1,25	177174,3	1,37
17	LUXEMBOURG	287	0,24	275846,1	0,81	209629,8	1,25	116730,3	0,90
18	SWEDEN	851	0,71	257004,5	0,76	119787,5	0,72	101241,6	0,78
19	BELGIUM	1494	1,25	108392,2	0,32	84862,8	0,51	71724,1	0,56
20	WITH OUT CITIZENSHIP	22	0,02	609,6	***	80378,9	0,48	67934,4	0,53
21	LIECHTENSTEIN	163	0,14	92459,3	0,27	79852,4	0,48	67489,4	0,52
22	JAPAN	177	0,15	179465,1	0,53	78738,9	0,47	66548,3	0,52
23	A.R. OF SYRIA	4975	4,18	73489,7	0,22	70579,8	0,42	59652,4	0,46
24	SOUTH KOREA	91	0,08	18679,5	0,05	61637,6	0,37	52094,7	0,40
25	CANADA	1111	0,93	45679,2	0,13	61166,0	0,37	51696,1	0,40
26	LEBANON	3132	2,63	73340,3	0,22	53068,3	0,32	44852,1	0,35
27	IRAQ	5064	4,25	64356,7	0,19	52275,7	0,31	44182,2	0,34
28	MARSHALL ISLANDS	8	***	140286,6	0,41	51511,5	0,31	43536,4	0,34
29	ISRAEL	3281	2,75	56827,3	0,17	39479,0	0,24	33366,7	0,26
30	DENMARK	327	0,27	54140,4	0,16	26988,7	0,16	22810,2	0,18
31	IRELAND	338	0,28	13343,5	0,04	24151,3	0,14	20412,1	0,16
32	FORMER YUGOSLAVIE	725	0,61	9320,7	0,03	24115,7	0,14	20382,1	0,16
33	IRAN	2408	2,02	24497,2	0,07	21022,6	0,13	17767,8	0,14
34	PANAMA	124	0,10	12266,5	0,04	18748,4	0,11	15845,8	0,12
35	JORDAN	2906	2,44	18574,5	0,05	18078,1	0,11	15279,2	0,12
36	MOLDAVIA	2163	1,82	24395,0	0,07	17821,3	0,11	15062,1	0,12
37	ARGENTINA	28	0,02	60699,9	0,18	14777,2	0,09	12489,4	0,10
38	ICELAND	17	0,01	13289,7	0,04	13961,9	0,08	11800,2	0,09
39	GIBRALTAR	30	0,03	23406,9	0,07	13469,9	0,08	11384,4	0,09
40	PORTUGAL	158	0,13	30845,2	0,09	12735,9	0,08	10764,1	0,08
41	POLAND	271	0,23	24451,0	0,07	12711,6	0,08	10743,6	0,08
42	BULGARIA	609	0,51	12195,8	0,04	11898,2	0,07	10056,1	0,08
43	THAILANDA	15	0,01	16066,9	0,05	11814,7	0,07	9985,5	0,08
44	EGYPT	1173	0,98	15503,1	0,05	11804,5	0,07	9976,9	0,08
45	NEW ZEELAND	16	0,01	31998,1		11785,6	0,07	9960,9	0,08
46	BELIZE	15	0,01	25680,8	0,08	11782,8	0,07	9958,6	0,08
47	SLOVENIA	65	0,05	26538,0	0,08	11696,7	0,07	9885,7	0,08
48	CZECH REPUBLIC	267	0,22	10829,8	0,03	11273,9	0,07	9528,5	0,07
49	FINLAND	65	0,05	14859,6	0,04	11077,1	0,07	9362,1	0,07
50	BERMUDE ISLANDS	4	***	11733,5	0,03	10544,8	0,06	8912,2	0,07

\*) includes countries selected upon the amount of the foreign direct investment, in equivalent of currency

\*\*\* Less than 0,01%

Diagram no. 3

The structure upon sector of activity\* of companies by foreign direct investment, incorporated between 1991 and December 2005

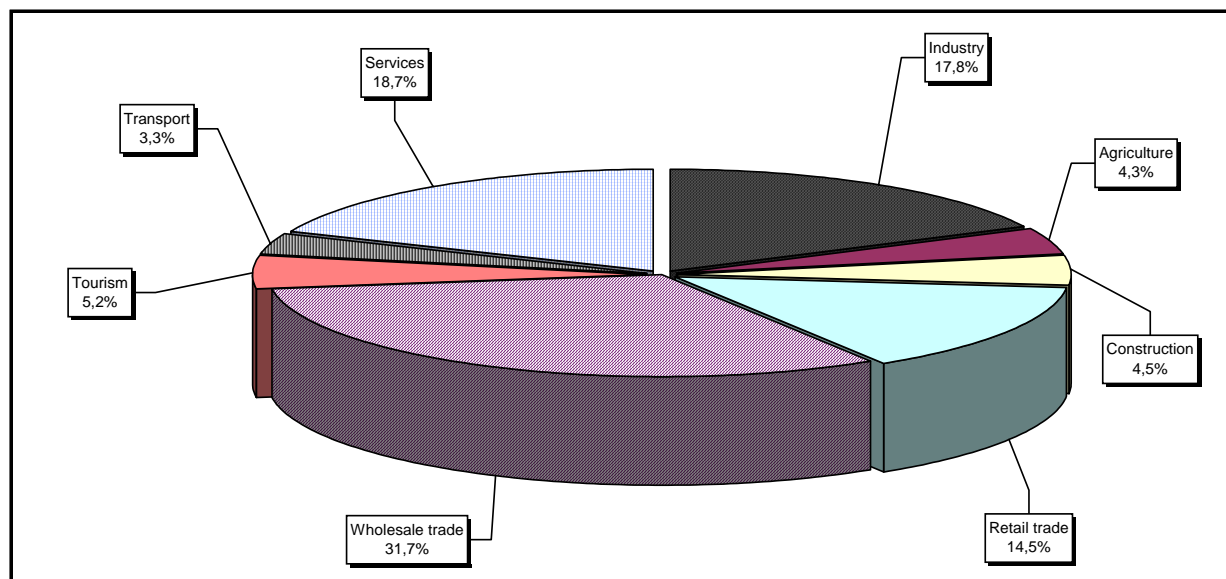
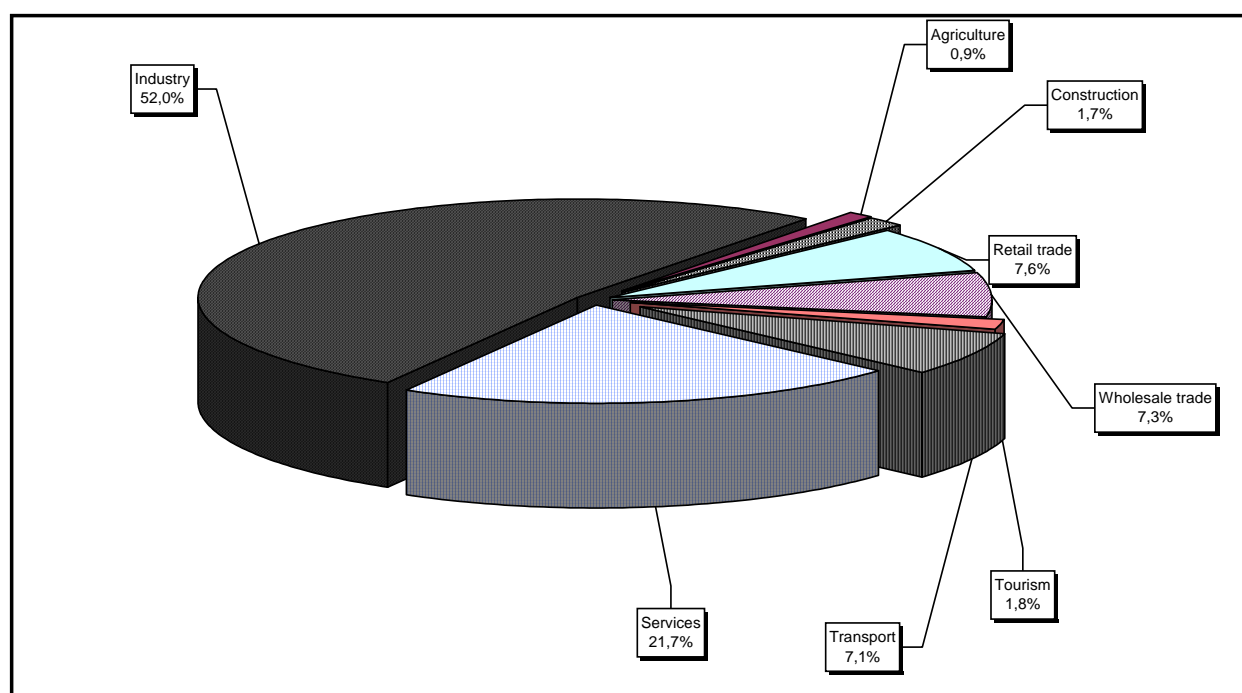


Diagram no. 4

The structure upon sector of activity in the amount of subscribed capital\*\* in companies by foreign direct investment, during 1991 - December 2005



\*) Calculated upon the main sector of activity declared

\*\*) Calculated upon the total amount of the subscribed capital, in equivalent of currency (USD)

Table no. 3

**The number of companies by foreign direct investment  
and the amount of the subscribed capital,  
balance account in the end of each month of 2005**

balance account at 30 April 2004	Number of companies		Amount of subscribed capital					
			Total in local currency		Total in equivalent of currency		Total in equivalent of currency	
	No.	%	mii RON	%	thousand USD	%	thousand EURO	%
0	1		2		3		4	
DECEMBER 2004	107401	100,0	26834355,7	100,0	13581918,9	100,0	10244798,7	100,0
JANUARY 2005	108173	100,7	27273484,4	101,6	13743015,0	101,2	10380953,4	101,3
FEBRUARY 2005	109126	101,6	27751949,9	103,4	13899520,8	102,3	10513228,4	102,6
MARCH 2005	110192	102,6	27917768,9	104,0	13971568,5	102,9	10574121,6	103,2
APRIL 2005	111168	103,5	28203880,7	105,1	14138257,6	104,1	10715003,3	104,6
MAY 2005	112120	104,4	29015101,6	108,1	14455294,0	106,4	10982955,1	107,2
JUNE 2005	113194	105,4	29604539,8	110,3	14643059,9	107,8	11141650,5	108,8
JULY 2005	114190	106,3	29969443,4	111,7	15460855,3	113,8	11832832,4	115,5
AUGUST 2005	115184	107,2	30179052,7	112,5	15513383,9	114,2	11877228,3	115,9
SEPTEMBER 2005	116123	108,1	30620863,2	114,1	15677396,3	115,4	12015847,8	117,3
OCTOBER 2005	117056	109,0	31376039,5	116,9	15910069,6	117,1	12212497,9	119,2
NOVEMBER 2005	118150	110,0	31635527,6	117,9	15991871,6	117,7	12281635,1	119,9
DECEMBER 2005	119120	110,9	34007512,8	126,7	16731601	123,2	12906836,9	126,0

*Note: column no. 1 shows the number of companies incorporated in the due period. The data concerning the amount of the subscribed capital include the records on the issued capital in companies incorporated in the related period plus the records of increase in capital and minus the subscribed capital in companies being struck-off from the trade register in the same period. The percentage inserted in column No. 1,2,3 and 4 shows the trend compared to the records of December 2004.*

Diagram no. 5

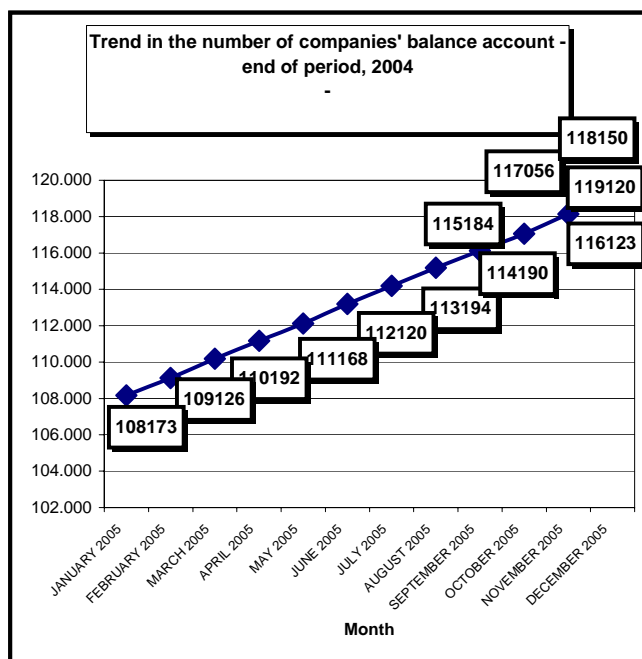


Diagram no. 6

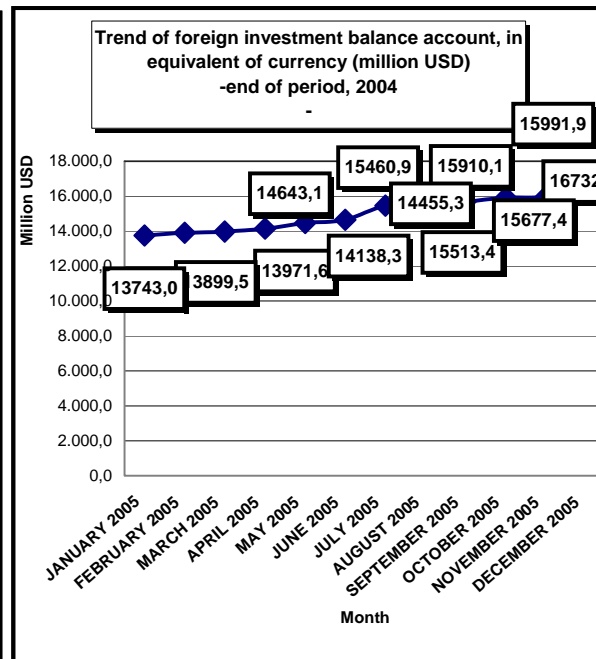


Table no. 4

**Comparative data on new companies by foreign direct investment and the subscribed capital,  
between January - December 2004 and 2005**

Month	2004				2005					
	New companies		Subscribed capital, in equivalent of currency		New companies		Trend related to 2004 (5/1)	Subscribed capital, in equivalent of currency		Trend related to 2004 (8/3)
	No.	%	thousand USD	%	No.	%	%	thousand USD	%	%
0	1	2	3	4	5	6	7	8	9	10
Jan-December out of which:	10281	100,0	210032,0	100,0	11719	100,0	114,0	88609,8	100,0	42,2
JANUARY	580	5,6	3131,3	1,5	772	6,6	133,1	3802,6	4,3	121,4
FEBRUARY	666	6,5	11665,8	5,6	953	8,1	143,1	6124,9	6,9	52,5
MARCH	924	9,0	10780,7	5,1	1066	9,1	115,4	6487,4	7,3	60,2
APRIL	781	7,6	20333,6	9,7	976	8,3	125,0	4941,8	5,6	24,3
MAY	828	8,1	5774,4	2,7	952	8,1	115,0	16067,3	18,1	278,3
JUNE	829	8,1	14169,1	6,7	1074	9,2	129,6	6200,4	7,0	43,8
JULY	890	8,7	5914,2	2,8	996	8,5	111,9	10548,1	11,9	178,4
AUGUST	869	8,5	3636,2	1,7	994	8,5	114,4	12163,7	13,7	334,5
SEPTEMBER	899	8,7	5536,9	2,6	939	8,0	104,4	5730,8	6,5	103,5
OCTOBER	913	8,9	2929,2	1,4	933	8,0	102,2	5187,0	5,9	177,1
NOVEMBER	1067	10,4	105087,4	50,0	1094	9,3	102,5	5722,9	6,5	5,4
DECEMBER	1035	10,1	21073,3	10,0	970	8,3	93,7	5632,8	6,4	26,7

Note: columns No. 1 and No. 5 show the number of new companies incorporated in the due period. The data on the subscribed capital include the initial capital subscribed in the related period. Columns No. 2, 4, 6 and 9 show the weight of each month in total period referred to.

Diagram no. 7

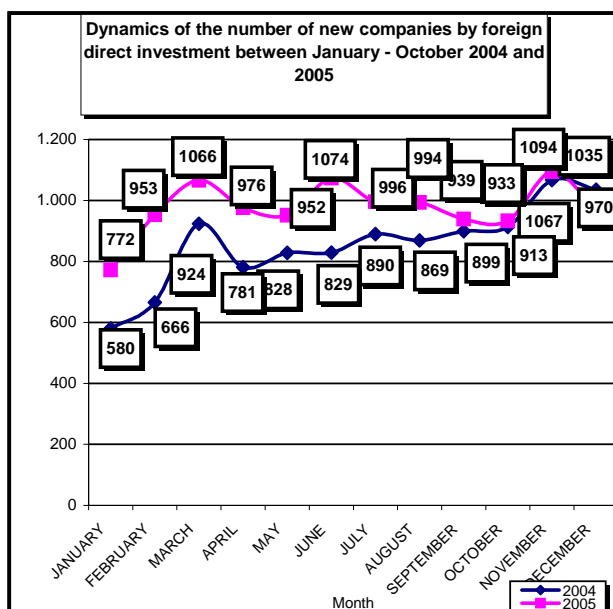


Diagram no. 8

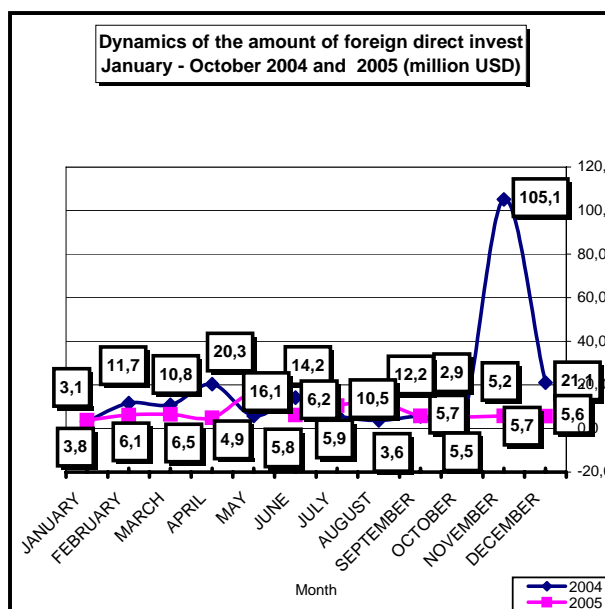


Table no. 5

**Incorporation of companies by foreign direct investment,  
during December 2005**

balance account at 30 April 2004	Number of companies		Amount of subscribed capital						Ranking by:	
			Total in local currency		Total in equivalent of currency		Total in equivalent of currency			
	No.	%	mii RON	%	USD	%	EURO	%		
0	1		2		3		4		5	
<b>Total ROMANIA</b>	<b>970</b>	<b>100,0</b>	<b>17402,0</b>	<b>100,0</b>	<b>5632781,0</b>	<b>100,0</b>	<b>4760696,4</b>	<b>100,0</b>	*	**
ALBA	10	1,03	36,7	0,21	11773,0	0,21	9950,3	0,21	16	20
ARAD	41	4,23	273,4	1,57	88194,0	1,57	74539,5	1,57	4	7
ARGES	22	2,27	135,8	0,78	45008,0	0,80	38039,7	0,80	10	10
BACAU	9	0,93	2,7	0,02	730,0	0,01	617,0	0,01	17	32
BIHOR	36	3,71	253,2	1,45	35681,0	0,63	30156,8	0,63	6	13
BISTRITA-NASAUD	2	0,21	0,3	***	96,0	***	81,1	***	23	40
BOTOSANI	2	0,21	0,7	***	217,0	***	183,4	***	23	36
BRASOV	31	3,20	140,8	0,81	48243,0	0,86	40773,9	0,86	7	9
BRAILA	7	0,72	5,7	0,03	1822,0	0,03	1539,9	0,03	19	28
BUZAU	10	1,03	14,7	0,08	1058,0	0,02	894,2	0,02	16	30
CARAS-SEVERIN	3		0,7	***	229,0	***	193,5	***	22	35
CALARASI	3	0,31	37,8	0,22	12116,0	0,22	10240,2	0,22	22	19
CLUJ	43	4,43	132,0	0,76	42838,0	0,76	36205,7	0,76	3	11
CONSTANTA	37	3,81	423,3	2,43	136938,0	2,43	115736,8	2,43	5	4
COVASNA	8	0,82	38,5	0,22	12597,0	0,22	10646,7	0,22	18	18
DAMBOVITA	10	1,03	34,9	0,20	11536,0	0,20	9750,0	0,20	16	21
DOLJ	15	1,55	6,2	0,04	1145,0	0,02	967,7	0,02	13	29
GALATI	9	0,93	24,0	0,14	6064,0	0,11	5125,2	0,11	17	25
GIURGIU	7	0,72	6,7	0,04	2069,0	0,04	1748,7	0,04	19	27
GORJ	2	0,21	0,6	***	164,0	***	138,6	***	23	37
HARGHITA	18	1,86	180,8	1,04	59104,0	1,05	49953,3	1,05	11	8
HUNEDOARA	8	0,82	39,5	0,23	10065,0	0,18	8506,7	0,18	18	22
IALOMITA	3	0,31	2405,0	13,82	771427,0	13,70	651992,3	13,70	22	2
IASI	13	1,34	123,1	0,71	37772,0	0,67	31924,0	0,67	14	12
MARAMURES	17	1,75	108,5	0,62	35061,0	0,62	29632,7	0,62	12	14
MEHEDINTI	3	0,31	1,3	***	421,0	***	355,8	***	22	33
MURES	27	2,78	23,8	0,14	7697,0	0,14	6505,3	0,14	8	23
NEAMT	6	0,62	21,7	0,12	7045,0	0,13	5954,3	0,13	20	24
OLT	10	1,03	87,9	0,51	27527,0	0,49	23265,2	0,49	16	15
PRAHOVA	13	1,34	36,0	0,21	12914,0	0,23	10914,6	0,23	14	17
SALAJ	2	0,21	0,3	***	89,0	***	75,2	***	23	41
SATU MARE	11	1,13	7,0	0,04	162,0	***	136,9	***	15	38
SIBIU	27	2,78	1077,0	6,19	354466,0	6,29	299586,5	6,29	8	3
SUCEAVA	8	0,82	55,1	0,32	18192,0	0,32	15375,5	0,32	18	16
TELEORMAN	6	0,62	10,3	0,06	2584,0	0,05	2183,9	0,05	20	26
TIMIS	64	6,60	402,2	2,31	133056,0	2,36	112455,9	2,36	2	5
TULCEA	1	0,10	0,1	***	32,0	***	27,0	***	24	42
VASLUI	5	0,52	1,3	***	161,0	***	136,1	***	21	39
VALCEA	6	0,62	2,8	0,02	766,0	0,01	647,4	0,01	20	31
VRANCEA	5	0,52	2,2	0,01	391,0	***	330,5	***	21	34
MUN. BUCURESTI	384	39,59	10953,0	62,94	3599749,0	63,91	3042424,7	63,91	1	1
ILFOV	26	2,68	294,5	1,69	95582,0	1,70	80783,7	1,70	9	6

\*) number of companies (column 1)

\*\*) capital in equivalent currency (column3)

\*\*\* Less than 0.01%

**Note: Empty rows reveal that there are no operation in the current month**

Table no. 6

**Statutory increase of the issued capital,  
in companies by foreign direct investment  
during December 2005**

balance account at 30 April 2004	Number of companies		Amount of subscribed capital						Ranking by:	
			Total in local currency		Total in equivalent of currency		Total in equivalent of currency			
	No.	%	mii RON	%	USD	%	EURO	%		
0	1		2		3		4		5	
<b>Total ROMANIA</b>	<b>960</b>	<b>100,00</b>	<b>2501534,7</b>	<b>100,00</b>	<b>820328180,0</b>	<b>100,00</b>	<b>693322432,8</b>	<b>100,00</b>	*	**
ALBA	10	1,04	2405,0	0,10	836966,0	0,10	707384,3	0,10	14	22
ARAD	29	3,02	27795,8	1,11	8867932,0	1,08	7494971,3	1,08	5	7
ARGES	18	1,88	107210,4	4,29	36264368,0	4,42	30649806,3	4,42	10	2
BACAU	8	0,83	1200,0	0,05	485184,0	0,06	410066,3	0,06	16	24
BIHOR	33	3,44	3136,3	0,13	1454448,0	0,18	1229265,9	0,18	4	16
BISTRITA-NASAUD	2	0,21	0,3	***	102,0	***	86,2	***	22	39
BOTOSANI	3	0,31	0,4	***	138,0	***	116,6	***	21	38
BRASOV	22	2,29	20895,8	0,84	6724909,0	0,82	5683737,8	0,82	7	9
BRAILA	4	0,42	150,2	***	45276,0	***	38266,2	***	20	32
BUZAU	11	1,15	2928,8	0,12	945473,0	0,12	799091,9	0,12	13	20
CARAS-SEVERIN	11		66279,4	2,65	21517983,0	2,62	18186502,3	2,62	13	3
CALARASI	2	0,21	47186,6	1,89	15230956,0	1,86	12872852,3	1,86	22	4
CLUJ	27	2,81	7776,2	0,31	2524426,0	0,31	2133586,6	0,31	6	12
CONSTANTA	29	3,02	4112,9	0,16	1320258,0	0,16	1115851,6	0,16	5	17
COVASNA	5	0,52	21,3	***	6492,0	***	5486,9	***	19	35
DAMBOVITA	5	0,52	2151,4	0,09	734859,0	0,09	621085,9	0,09	19	23
DOLJ	8	0,83	1166,8	0,05	374645,0	0,05	316641,3	0,05	16	26
GALATI	5	0,52	6488,7	0,26	2080909,0	0,25	1758736,2	0,25	19	13
GIURGIU	5	0,52	250,8	0,01	80247,0	***	67822,9	***	19	31
GORJ										
HARGHITA	8	0,83	830,4	0,03	267966,0	0,03	226478,7	0,03	16	28
HUNEDOARA	6	0,63	3377,4	0,14	1096734,0	0,13	926934,2	0,13	18	18
IALOMITA	1	0,10	0,2	***	66,0	***	55,8	***	23	40
IASI	13	1,35	5172,2	0,21	1745061,0	0,21	1474885,3	0,21	12	15
MARAMURES	11	1,15	876,1	0,04	-17802,0	0,00	-15045,8	0,00	13	42
MEHEDINTI	4	0,42	5843,5	0,23	1997403,0	0,24	1688158,9	0,24	20	14
MURES	19	1,98	862,9	0,03	282113,0	0,03	238435,4	0,03	9	27
NEAMT	7	0,73	349,8	0,01	113676,0	0,01	96076,3	0,01	17	29
OLT	5	0,52	28066,5	1,12	9303442,0	1,13	7863054,3	1,13	19	6
PRAHOVA	20	2,08	3783,0	0,15	952180,0	0,12	804760,5	0,12	8	19
SALAJ	5	0,52	252,1	0,01	84600,0	0,01	71502,0	0,01	19	30
SATU MARE	9	0,94	2570,3	0,10	838867,0	0,10	708991,0	0,10	15	21
SIBIU	17	1,77	9269,9	0,37	2858569,0	0,35	2415996,5	0,35	11	11
SUCEAVA	7	0,73	1194,2	0,05	389468,0	0,05	329169,4	0,05	17	25
TELEORMAN	3	0,31	118,9	***	38377,0	***	32435,4	***	21	33
TIMIS	60	6,25	21667,9	0,87	6981210,0	0,85	5900357,5	0,85	2	8
TULCEA	2	0,21	34136,1	1,36	11869282,0	1,45	10031643,0	1,45	22	5
VASLUI	2	0,21	9,4	***	3191,0	***	2697,0	***	22	36
VALCEA	5	0,52	21,9	***	7099,0	***	5999,9	***	19	34
VRANCEA	3	0,31	2,0	***	708,0	***	598,4	***	21	37
MUN. BUCURESTI	474	49,38	2072938,6	82,87	679043829,0	82,78	573912162,2	82,78	1	1
ILFOV	42	4,38	9034,3	0,36	2976570,0	0,36	2515728,2	0,36	3	10

\*) number of companies (column 1)

\*\*) capital in equivalent currency (column3)

\*\*\* Less than 0.01%

Note: Empty rows reveal that there are no operation in the current month

Table no. 7

**Strike-off of companies by foreign direct investment,  
from the trade register, during December 2005**

balance account at 30 April 2004	Number of companies		Amount of subscribed capital						Ranking by:	
			Total in local currency		Total in equivalent of currency		Total in equivalent of currency			
	No.	%	mii RON	%	USD	%	EURO	%		
0	1		2		3		4		5	
<b>Total ROMANIA</b>	<b>128</b>	<b>100,0</b>	<b>38036,6</b>	<b>100,0</b>	<b>39383690,0</b>	<b>100,0</b>	<b>33286185,2</b>	<b>100,0</b>	*	**
ALBA	3	2,34	72,4	0,19	26890,0	0,07	22726,8	0,07	7	13
ARAD	4	3,13	11,0	0,03	13930,0	0,04	11773,3	0,04	6	17
ARGES	2	1,56	31,6	0,08	24961,0	0,06	21096,5	0,06	8	14
BACAU	1	0,78	0,2	***	65,0	***	54,9	***	9	28
at 31 December 2003	12	9,38	45,7	0,12	55624,0	0,14	47012,1	0,14	2	9
BISTRITA-NASAUD	1	0,78	0,1	***	61,0	***	51,6	***	9	29
BOTOSANI	1	0,78	30,2	0,08	10493,0	0,03	8868,4	0,03	9	18
BRASOV	4	3,13	367,0	0,96	110826,0	0,28	93667,6	0,28	6	7
BRAILA	4	3,13	92,1	0,24	34773,0	0,09	29389,3	0,09	6	11
BUZAU	5	3,91	9,5	0,03	42709,0	0,11	36096,7	0,11	5	10
CARAS-SEVERIN	4	3,13	28,9	0,08	10364,0	0,03	8759,4	0,03	6	19
CALARASI	1	0,78	0,2	***	73,0	***	61,7	***	9	27
CLUJ	4	3,13	26183,5	68,84	25303208,0	64,25	21385687,0	64,25	6	1
CONSTANTA	5	3,91	0,6	***	1433,0	***	1211,1	***	5	23
COVASNA	4	3,13	375,9	0,99	133114,0	0,34	112504,9	0,34	6	6
DAMBOVITA										
DOLJ	2	1,56	1,4	***	599,0	***	506,3	***	8	25
GALATI										
GIURGIU	2	1,56	2,7	***	880,0	***	743,8	***	8	24
GORJ										
HARGHITA	1	0,78	18,9	0,05	22500,0	0,06	19016,5	0,06	9	16
HUNEDOARA	3	2,34	3,3	***	2800,0	***	2366,5	***	7	21
IALOMITA										
IASI	1	0,78	1117,9	2,94	2096000,0	5,32	1771490,8	5,32	9	3
MARAMURES										
MEHEDINTI										
MURES	4	3,13	5,3	0,01	2675,0	***	2260,8	***	6	22
NEAMT	1	0,78	0,2	***	148,0	***	125,1	***	9	26
OLT										
PRAHOVA										
SALAJ	5	3,91	9,9	0,03	10026,0	0,03	8473,7	0,03	5	20
SATU MARE	4	3,13	301,5	0,79	101968,0	0,26	86181,0	0,26	6	8
SIBIU	4	3,13	40,7	0,11	23547,0	0,06	19901,4	0,06	6	15
SUCEAVA										
TELEORMAN										
TIMIS	6	4,69	5110,9	13,44	1707979,0	4,34	1443544,4	4,34	4	4
TULCEA										
VASLUI										
VALCEA										
VRANCEA	1	0,78	87,0	0,23	30975,0	0,08	26179,4	0,08	9	12
MUN. BUCURESTI	31	24,22	3317,0	8,72	9332946,0	23,70	7887990,4	23,70	1	2
ILFOV	8	6,25	771,1	2,03	282123,0	0,72	238443,8	0,72	3	5

\*) number of companies (column 1)

\*\*) capital in equivalent currency (column3)

\*\*\* Less than 0.01%

Note: Empty rows reveal that there are no operation in the current month

Table no. 8

**Changes by cession in the issued capital  
of the companies by foreign direct investment,  
during December 2005**

balance account at 30 April 2004	Number of companies		Amount of subscribed capital						Ranking by:	
			Total in local currency		Total in equivalent of currency		Total in equivalent of currency			
	No.	%	mii RON	%	USD	%	EURO	%		
0	1		2		3		4		5	
<b>Total ROMANIA</b>	<b>676</b>	<b>100,0</b>	<b>108915,0</b>	<b>100,0</b>	<b>46848374</b>	<b>100,0</b>	<b>39595164</b>	<b>100,0</b>	*	**
ALBA	11	1,6	340,4	0,31	228113	0,49	192796	0,49	10	14
ARAD	19	2,8	1747,0	1,60	582095	1,24	491973	1,24	6	9
ARGES	7	1,0	6561,8	6,02	2878116,0	6,14	2432517,2	6,14	13	3
BACAU	3	0,4	111,9	0,10	141049	0,30	119211	0,30	17	16
at 31 December 2003	26	3,8	256,3	0,24	109387	0,23	92451	0,23	4	19
BISTRITA-NASAUD	2	0,3	0,0	***	433	0,00	366	0,00	18	41
BOTOSANI	2	0,3	17,1	0,02	5161	0,01	4362	0,01	18	29
BRASOV	17	2,5	197,1	0,18	53234	0,11	44992	0,11	7	21
BRAILA	6	0,9	400,9	0,37	139359	0,30	117783	0,30	14	17
BUZAU	7	1,0	5315,7	4,88	1803812	3,85	1524540	3,85	13	7
CARAS-SEVERIN	4		29,8	0,03	387508	0,83	327513	0,83	16	12
CALARASI	3	0,4	1,0	***	325	***	275	***	17	35
CLUJ	24	3,6	2929,8	2,69	920998	1,97	778406	1,97	5	8
CONSTANTA	19	2,8	972,3	0,89	302097	0,64	255325	0,64	6	13
COVASNA	4	0,6	2198,3	2,02	2442285	5,21	2064163	5,21	16	5
DAMBOVITA	2	0,3	1,7	***	549	***	464	***	18	34
DOLJ	10	1,5	39,1	0,04	12084	0,03	10213	0,03	11	25
GALATI	3	0,4	5,5	***	1727	***	1460	***	17	31
GIURGIU	1	0,1	0,1	***	29	***	25	***	19	38
GORJ	1	0,1	0,0	***	4	***	3	***	19	39
HARGHITA	6	0,9	87,3	0,08	32517	0,07	27483	0,07	14	24
HUNEDOARA	5	0,7	1391,8	1,28	526438	1,12	444933	1,12	15	11
IALOMITA	2	0,3	0,0	0,00	3	0,00	3	0,00	18	40
IASI	8	1,2	12,6	0,01	6016	0,01	5085	0,01	12	27
MARAMURES	7	1,0	2,7	***	5803	0,01	4905	0,01	13	28
MEHEDINTI	2	0,3	18,2	0,02	5446	0,01	4603	0,01	18	42
MURES	13	1,9	7161,8	6,58	7965827	17,00	6732533	17,00	8	2
NEAMT	11	1,6	36,3	0,03	11585	0,02	9791	0,02	10	26
OLT	5	0,7	71,5	0,07	41829	0,09	35353	0,09	15	22
PRAHOVA	12	1,8	191,1	0,18	72415	0,15	61203	0,15	9	20
SALAJ	6	0,9	448,3	0,41	130618	0,28	110395	0,28	14	18
SATU MARE	6	0,9	401,7	0,37	163402	0,35	138104	0,35	14	15
SIBIU	13	1,9	1802,9	1,66	540782	1,15	457056	1,15	8	10
SUCEAVA	3	0,4	1,1	***	1252	***	1058	***	17	32
TELEORMAN	2	0,3	1,0	***	303	***	256	***	18	36
TIMIS	42	6,2	6005,1	5,51	1976026	4,22	1670092	4,22	2	6
TULCEA	2	0,3	0,3	***	81	***	68	***	18	37
VASLUI	2	0,3	9,4	***	3258	***	2754	***	18	30
VALCEA	2	0,3	1,3	***	1223	***	1034	***	18	33
VRANCEA	3	0,4	19,2	0,02	34138	0,07	28853	0,07	17	23
MUN. BUCURESTI	317	46,9	66091,8	60,68	22606575	48,25	19106555	48,25	1	1
ILFOV	36	5,3	4069,9	3,74	2726236	5,82	2304152	5,82	3	4

\*) number of companies (column 1)

\*\*) capital in equivalent currency (column 3)

\*\*\* Less than 0,01%

Note: Empty rows reveal that there are no operation in the current month

Table no. 9

**Incorporation of companies by foreign direct investment,  
according to the development regions,  
during December 2005**

Development regions	Number of companies		Amount of subscribed capital						Ranking by:	
			Total in local currency		Total in equivalent of currency		Total in equivalent of currency			
	No.	%	mii RON	%	USD	%	EURO	%		
0	1	2	3	4	5					
<b>Total ROMANIA</b>	<b>970</b>	<b>100,0</b>	<b>17402,0</b>	<b>100,0</b>	<b>5632781,0</b>	<b>100,0</b>	<b>4760696,4</b>	<b>100,0</b>	*	**
NORTH-EAST	43	4,4	204,6	1,2	64117,0	1,1	54190,2	1,1	7	7
SOUTH-EAST	69	7,1	469,9	2,7	146305,0	2,6	123653,6	2,6	5	5
SOUTH-MUNTENIA	64	6,6	2666,6	15,3	857654,0	15,2	724869,4	15,2	6	2
SOUTH-WEST OLTENIA	36	3,7	98,8	0,6	30023,0	0,5	25374,7	0,5	8	8
WEST	116	12,0	715,8	4,1	231544,0	4,1	195695,6	4,1	3	4
NORTH-WEST	111	11,4	501,2	2,9	113927,0	2,0	96288,5	2,0	4	6
CENTER	121	12,5	1497,6	8,6	493880,0	8,8	417416,0	8,8	2	3
BUCHAREST-ILFOV	410	42,3	11247,5	64,6	3695331,0	65,6	3123208,4	65,6	1	1

Table no. 10

**Statutory increase in the issued capital of companies by  
foreign direct investment, according to the development regions,  
during December 2005**

Development regions	Number of companies		Amount of subscribed capital						Ranking by:	
			Total in local currency		Total in equivalent of currency		Total in equivalent of currency			
	No.	%	million ROL	%	USD	%	EURO	%		
0	1	2	3	4	5					
<b>Total ROMANIA</b>	<b>960</b>	<b>100,0</b>	<b>2501534,7</b>	<b>100,0</b>	<b>820328180,0</b>	<b>100,0</b>	<b>693322432,8</b>	<b>100,0</b>	*	**
NORTH-EAST	40	4,2	7926,0	0,3	2736718,0	0,3	2313010,9	0,3	6	8
SOUTH-EAST	54	5,6	47818,8	1,9	16261906,0	2,0	13744187,4	2,0	5	4
SOUTH-MUNTENIA	54	5,6	160701,1	6,4	53301053,0	6,5	45048819,0	6,5	5	2
SOUTH-WEST OLTENIA	22	2,3	35098,7	1,4	11682589,0	1,4	9873854,4	1,4	7	5
WEST	106	11,0	119120,6	4,8	38463859,0	4,7	32508765,3	4,7	2	3
NORTH-WEST	87	9,1	14611,3	0,6	4884641,0	0,6	4128385,8	0,6	3	7
CENTER	81	8,4	34285,3	1,4	10977015,0	1,3	9277519,6	1,3	4	6
BUCHAREST-ILFOV	516	53,8	2081972,9	83,2	682020399,0	83,1	576427890,5	83,1	1	1

Table no. 11

**Strike-off of companies by foreign direct investment and the amount  
of their issued capital, according to the development regions,  
during December 2005**

Development regions	Number of companies		Amount of subscribed capital						Ranking by:	
			Total in local currency		Total in equivalent of currency		Total in equivalent of currency			
	No.	%	million ROL	%	USD	%	EURO	%		
0	1	2	3	4	5					
<b>Total ROMANIA</b>	<b>128</b>	<b>100,0</b>	<b>38036,6</b>	<b>100,0</b>	<b>39383690</b>	<b>100,0</b>	<b>33286185</b>	<b>100,0</b>	*	**
NORTH-EAST	4	3,1	1148,5	3,0	2106706	5,3	1780539	5,3	7	3
SOUTH-EAST	15	11,7	189,2	0,5	109890	0,3	92876	0,3	5	6
SOUTH-MUNTENIA	5	3,9	34,5	0,1	25914	0,1	21902	0,1	6	7
SOUTH-WEST OLTENIA	2	1,6	1,4	***	599	***	506	***	8	8
WEST	17	13,3	5154,0	13,6	1735073	4,4	1466444	4,4	4	4
NORTH-WEST	26	20,3	26540,7	69,8	25470887	64,7	21527405	64,7	2	1
CENTER	20	15,6	880,3	2,3	319552	0,8	270078	0,8	3	5
BUCHAREST-ILFOV	39	30,5	4088,0	10,7	9615069	24,4	8126434	24,4	1	2

\*) number of companies (column 1)

\*\*) total issued capital, in equivalent of currency (column3)

\*\*\* Less than 0.01%

Table no. 12

**Incorporation of companies by foreign direct investment, by continents  
according to the investors' country of origin,  
during December 2005**

Continent	Number of companies		Amount of subscribed capital						Ranking by:	
			Total in local currency		Total in equivalent of currency		Total in equivalent of currency			
	No.	%	mii RON	%	USD	%	EURO	%		
0	1		2		3		4		5	
<b>Total ROMANIA</b>	<b>970</b>	<b>100,0</b>	<b>17402,0</b>	<b>100,0</b>	<b>5632781,0</b>	<b>100,0</b>	<b>4760696,4</b>	<b>100,0</b>	*	**
EUROPE	835	86,1	11960,7	68,7	3827350,0	67,9	3234787,8	67,9	1	1
AFRICA	10	1,0	40,8	0,2	13183,0	0,2	11142,0	0,2	5	4
NORTH AMERICA	42	4,3	83,3	0,5	27265,0	0,5	23043,7	0,5	3	3
SOUTH AMERICA	16	1,6	40,9	0,2	13115,0	0,2	11084,5	0,2	4	5
ASIA	127	13,1	5239,5	30,1	1739670,0	30,9	1470328,9	30,9	2	2
OCEANIA	3	0,3	36,9	0,2	12198,0	0,2	10309,5	0,2	6	6

Table no. 13

**Increase in the issued capital of companies by foreign direct investment,  
by continents according to the investors' country of origin,  
during December 2005**

Continent	Number of companies		Amount of subscribed capital						Ranking by:	
			Total in local currency		Total in equivalent of currency		Total in equivalent of currency			
	No.	%	million ROL	%	USD	%	EURO	%		
0	1		2		3		4		5	
<b>Total ROMANIA</b>	<b>960</b>	<b>100,0</b>	<b>2501534,7</b>	<b>100,0</b>	<b>820328180,0</b>	<b>100,0</b>	<b>693322432,8</b>	<b>100,0</b>	*	**
EUROPE	749	78,0	2439074,9	97,5	799633974,0	97,5	675832167,8	97,5	1	1
AFRICA	13	1,4	1947,4	0,1	691013,0	0,1	584028,2	0,1	5	4
NORTH AMERICA	35	3,6	22951,1	0,9	7419696,0	0,9	6270955,7	0,9	3	3
SOUTH AMERICA	21	2,2	192,8	***	62593,0	***	52902,2	***	4	5
ASIA	196	20,4	37363,0	1,5	12519062,0	1,5	10580822,1	1,5	2	2
OCEANIA	4	0,4	5,6	***	1842,0	***	1556,8	***	6	6

Table no. 14

**Strike-off of companies by foreign direct investment and their issued capital,  
by continents according to the investors' country of origin,  
during December 2005**

Continent	Number of companies		Amount of subscribed capital						Ranking by:	
			Total in local currency		Total in equivalent of currency		Total in equivalent of currency			
	No.	%	million ROL	%	USD	%	EURO	%		
0	1		2		3		4		5	
<b>Total ROMANIA</b>	<b>128</b>	<b>100,0</b>	<b>38036,6</b>	<b>100,0</b>	<b>39383690</b>	<b>100,0</b>	<b>33286185</b>	<b>100,0</b>	*	**
EUROPE	106	82,8	36820,6	96,8	38847630	98,6	32833120	98,6	1	1
AFRICA	2	1,6	23,3	0,1	28242	0,1	23869	0,1	3	3
NORTH AMERICA	2	1,6	36,0	0,1	12416	0,0	10494	0,0	3	4
SOUTH AMERICA	2	1,6	3,1	***	1539	***	1301	***	3	5
ASIA	22	17,2	1153,5	3,0	493863	1,3	417402	1,3	2	2

\*) number of companies (column 1)

\*\*) total issued capital, in equivalent of currency (column3)

\*\*\* Sub 0,01%

Note: Empty rows reveal that there are no operation in the current month

Table no. 15

**Incorporation of companies by foreign direct investment, by economical groups  
of countries according to the investors' country of origin,  
during December 2005**

Economical groups	Number of companies		Amount of subscribed capital						Ranking by:	
			Total in local currency		Total in equivalent of currency		Total in equivalent of currency			
	No.	%	mii RON	%	USD	%	EURO	%		
0	1		2		3		4		5	
<b>Total ROMANIA</b>	<b>970</b>		<b>17402,0</b>		<b>5632781</b>		<b>4760696</b>		*	**
E.U.	617	63,6	6325,4	36,3	2007602	35,6	1696779	35,6	2	2
E.A.F.T.A.	24	2,5	3859,9	22,2	1250170	22,2	1056615	22,2	4	3
O.E.C.D.	803	82,8	11923,4	68,5	3817138	67,8	3226157	67,8	1	1
C.E.F.T.A.	74	7,6	959,2	5,5	307384	5,5	259794	5,5	3	4

Table no. 16

**Increase in the issued capital of companies by foreign direct investment,  
by economical groups of countries according to the investors' country of origin,  
during December 2005**

Economical groups	Number of companies		Amount of subscribed capital						Ranking by:	
			Total in local currency		Total in equivalent of currency		Total in equivalent of currency			
	No.	%	mii RON	%	USD	%	EURO	%		
0	1		2		3		4		5	
<b>Total ROMANIA</b>	<b>960</b>		<b>2501534,7</b>		<b>820328180,0</b>		<b>693322432,8</b>		*	**
E.U.	459	47,8	2235979,6	89,4	733569771,0	89,4	619996229,2	89,4	2	2
E.A.F.T.A.	24	2,5	62926,9	2,5	20546641,0	2,5	17365546,5	2,5	4	3
O.E.C.D.	663	69,1	2350066,1	93,9	770436033,0	93,9	651154742,4	93,9	1	1
C.E.F.T.A.	50	5,2	18864,3	0,8	5967384,0	0,7	5043495,1	0,7	3	4

Table no. 17

**Strike-off of companies by foreign direct investment and their issued capital,  
by economical groups of countries according to the investors' country of origin,  
during December 2005**

Economical groups	Number of companies		Amount of subscribed capital						Ranking by:	
			Total in local currency		Total in equivalent of currency		Total in equivalent of currency			
	No.	%	mii RON	%	USD	%	EURO	%		
0	1		2		3		4		5	
<b>Total ROMANIA</b>	<b>128</b>		<b>38036,6</b>		<b>39383690</b>		<b>33286185</b>		*	**
E.U.	64	50,0	35123,4	92,3	36477867	92,6	30830251	92,6	2	2
E.A.F.T.A.	2	1,6	72,2	0,2	26206	0,1	22149	0,1	4	4
O.E.C.D.	95	74,2	35452,9	93,2	36627008	93,0	30956301	93,0	1	1
C.E.F.T.A.	13	10,2	172,9	0,5	91740	0,2	77537	0,2	3	3

\*) number of companies (column 1)

\*\*) total issued capital, in equivalent of currency (column3)

\*\*\* Less than 0.01%

Note: Each economic group's weight is calculated related to the total Romania.

The weights' sum is different from 100% due to the fact that one country might be part of more than one economical group.

Table no. 18

**Classification\* by countries of origin of investors  
in companies by foreign direct investment,  
incorporated during December 2005**

No. crt.	Countries	Number of companies		Amount of subscribed capital					
				Total in local currency		Total in equivalent of currency		Total in equivalent of currency	
		No.	%	mii RON	%	USD	%	EURO	%
0	1	2		3		4		5	
	<b>Total ROMANIA, out of which:</b>	<b>970</b>	<b>100,0</b>	<b>17402,0</b>	<b>100,0</b>	<b>5632781,0</b>	<b>100,0</b>	<b>4760696,4</b>	<b>100,0</b>
1	SWITZERLAND	22	2,3	3823,8	21,97	1238538,0	21,99	1046783,7	21,99
2	CHINA	34	3,5	2874,4	16,52	983264,0	17,46	831032,0	17,46
3	GERMANY	103	10,6	2520,7	14,48	836659,0	14,85	707124,9	14,85
4	A.R. OF SYRIA	10	1,0	1843,2	10,59	589366,0	10,46	498118,5	10,46
5	NETHERLAND	40	4,1	1129,5	6,49	357739,0	6,35	302352,7	6,35
6	ITALY	218	22,5	704,4	4,05	220790,0	3,92	186606,6	3,92
7	TURKEY	40	4,1	670,8	3,85	216868,0	3,85	183291,8	3,85
8	CZECH REPUBLIC	4	0,4	500,7	2,88	160311,0	2,85	135491,2	2,85
9	GREECE	35	3,6	433,2	2,49	140581,0	2,50	118815,8	2,50
10	HUNGARY	62	6,4	426,6	2,45	136750,0	2,43	115577,9	2,43
11	FRANCE	62	6,4	420,9	2,42	135297,0	2,40	114349,9	2,40
12	IRAQ		0,4	362,1	2,08	115812,0	2,06	97881,6	2,06
13	SPAIN	29	3,0	326,2	1,87	104582,0	1,86	88390,3	1,86
14	AUSTRIA	43	4,4	408,5	2,35	89534,0	1,59	75672,1	1,59
15	BELGIUM	15	1,5	197,1	1,13	62870,0	1,12	53136,3	1,12
16	U.S.A.	42	4,3	83,3	0,48	27265,0	0,48	23043,7	0,48
17	GREAT BRITAIN	36	3,7	65,4	0,38	21027,0	0,37	17771,5	0,37
18	IRAN	9	0,9	60,8	0,35	19905,0	0,35	16823,2	0,35
19	CYPRUS	38	3,9	58,0	0,33	18987,0	0,34	16047,4	0,34
20	SWEDEN	8	0,8	42,8	0,25	14989,0	0,27	12668,4	0,27
21	EGYPT	5	0,5	38,9	0,22	12535,0	0,22	10594,3	0,22
22	MARSHALL ISLANDS	1	0,1	36,6	0,21	12100,0	0,21	10226,6	0,21
23	CANADA	8	0,8	37,6	0,22	12033,0	0,21	10170,0	0,21
24	INDIA	3	0,3	36,7	0,21	12022,0	0,21	10160,7	0,21
25	DENMARK	5	0,5	37,3	0,21	11938,0	0,21	10089,7	0,21
26	MOLDAVIA	24	2,5	39,9	0,23	11936,0	0,21	10088,0	0,21
27	NORWAY	2	0,2	36,1	0,21	11632,0	0,21	9831,1	0,21
28	ISRAEL	54	5,6	32,5	0,19	9812,0	0,17	8292,9	0,17
29	PORTUGAL	9	0,9	28,2	0,16	7894,0	0,14	6671,8	0,14
30	CROATIA	1	0,1	22,6	0,13	7270,0	0,13	6144,4	0,13
31	POLAND	3	0,3	18,7	0,11	5976,0	0,11	5050,8	0,11
32	LEBANON	6	0,6	17,1	0,10	5433,0	0,10	4591,8	0,10
33	SERBIA AND MONTENEGRO	3	0,3	15,6	0,09	5037,0	0,09	4257,2	0,09
34	SLOVAKIA	2	0,2	12,6	0,07	4162,0	0,07	3517,6	0,07
35	JORDAN	4	0,4	11,9	0,07	3848,0	0,07	3252,2	0,07
36	IRELAND	9	0,9	8,6	0,05	2809,0	0,05	2374,1	0,05
37	LITHUANIA	2	0,2	4,0	0,02	1307,0	0,02	1104,6	0,02
38	PANAMA	1	0,1	1,8	0,01	590,0	0,01	498,7	0,01
39	LUXEMBOURG	4	0,4	1,7	***	566,0	0,01	478,4	0,01
40	LIBYA	1	0,1	1,0	***	347,0	***	293,3	***

\*) on countries selected upon the amount of the foreign direct investment, in equivalent of currency, ranking by a descending scale (col 4)

\*\*\* Less than 0.01%

Table no. 19

**Classification\* by investors' countries of origin according to the amount  
of the increase in the issued capital, during December 2005**

No. crt.	Countries	Number of companies		Amount of subscribed capital					
				Total in local currency		Total in equivalent of currency		Total in equivalent of currency	
		No.	%	mii RON	%	USD	%	EURO	%
0	1	2		3		4		5	
	<b>Total ROMANIA</b>	<b>960</b>	<b>100,0</b>	<b>2501534,7</b>	<b>100,0</b>	<b>820328180,0</b>	<b>100,0</b>	<b>693322432,8</b>	<b>100,0</b>
1	NETHERLAND	36	3,75	1555732,1	62,191	509814468,0	62,15	430883414,6	62,148
2	GERMANY	74	7,71	414870,9	16,58	135298683,0	16,49	114351322,2	16,49
3	CYPRUS	65	6,77	100718,0	4,03	32735452,0	3,99	27667248,0	3,99
4	FRANCE	24	2,50	85888,2	3,43	28594715,0	3,49	24167592,7	3,49
5	SWITZERLAND	19	1,98	61026,4	2,44	19917335,0	2,43	16833671,6	2,43
6	GREAT BRITAIN	24	2,50	56440,0	2,26	19873632,0	2,42	16796734,8	2,42
7	SPAIN	21	2,19	53563,5	2,14	17297595,0	2,11	14619527,8	2,11
8	ITALY	178	18,54	34930,8	1,40	11532472,0	1,41	9746979,0	1,41
9	AUSTRIA	39	4,06	23714,1	0,95	7605991,0	0,93	6428407,9	0,93
10	U.S.A.	35	3,65	22951,1	0,92	7419696,0	0,90	6270955,7	0,90
11	HUNGARY	37	3,85	16562,5	0,66	5136778,0	0,63	4341486,1	0,63
12	CHINA	79	8,23	12594,7	0,50	4123371,0	0,50	3484977,9	0,50
13	JORDAN	8	0,83	10409,9	0,42	3695432,0	0,45	3123293,8	0,45
14	TURKEY	88	9,17	11381,1	0,45	3589176,0	0,44	3033488,7	0,44
15	MOLDAVIA	38	3,96	7814,1	0,31	2634708,0	0,32	2226794,4	0,32
16	ISRAEL	38	3,96	6757,9	0,27	2210815,0	0,27	1868529,8	0,27
17	DENMARK	7	0,73	4564,3	0,18	1505995,0	0,18	1272832,2	0,18
18	LEBANON	19	1,98	4380,9	0,18	1434781,0	0,17	1212643,8	0,17
19	BELGIUM	10	1,04	3697,0	0,15	1237274,0	0,15	1045715,4	0,15
20	EGYPT	5	0,52	1944,9	0,08	690135,0	0,08	583286,2	0,08
21	GREECE	23	2,40	1524,5	0,06	469224,0	0,06	396577,3	0,06
22	CZECH REPUBLIC	4	0,42	1132,0	0,05	450923,0	0,05	381109,7	0,05
23	LIECHTENSTEIN	1	0,10	1306,7	0,05	422008,0	0,05	356671,4	0,05
24	SLOVENIA	1	0,10	892,2	0,04	291656,0	0,04	246500,9	0,04
25	IRAQ	9	0,94	878,0	0,04	283421,0	0,03	239540,9	0,03
26	PORTUGAL	3	0,31	739,8	0,03	238655,0	0,03	201705,7	0,03
27	UNITED ARAB EMIRATES	2	0,21	686,4	0,03	220601,0	0,03	186446,9	0,03
28	ICELAND	3	0,31	484,7	0,02	172252,0	0,02	145583,4	0,02
29	GIBRALTAR	3	0,31	499,4	0,02	161010,0	0,02	136081,9	0,02
30	FORMER YUGOSLAVIE	8	0,83	300,2	0,01	160065,0	0,02	135283,2	0,02
31	A.R. OF SYRIA	15	1,56	347,7	0,01	132430,0	0,02	111926,8	0,02
32	PALESTINA	2	0,21	400,2	0,02	128200,0	0,02	108351,7	0,02
33	AZERBAIDIJAN	1	0,10	374,6	0,01	123620,0	0,02	104480,8	0,02
34	BAHREIN	1	0,10	327,3	0,01	99900,0	0,01	84433,2	0,01
35	LUXEMBOURG	10	1,04	302,6	0,01	97326,0	0,01	82257,7	0,01
36	JAPAN	1	0,10	284,7	0,01	95220,0	0,01	80477,7	0,01
37	SERBIA AND MONTENEGRO	3	0,31	45,4	***	76601,0	***	64741,4	***
38	IRAN	16	1,67	194,2	***	62829,0	***	53101,6	***
39	UKRAINE	6	0,63	147,8	***	60793,0	***	51380,8	***
40	POLAND	2	0,21	146,2	***	47030,0	***	39748,7	***
41	SLOVAKIA	2	0,21	125,2	***	38962,0	***	32929,8	***
42	I.VIRGINE BRIT.	5	0,52	112,6	***	36477,0	***	30829,5	***
43	NORWAY	1	0,10	109,2	***	35046,0	***	29620,1	***
44	I.TURKS AND CAICOS	1	0,10	73,5	***	23950,0	***	20242,0	***
45	VIETNAM	4	0,42	70,0	***	22001,0	***	18594,7	***
46	HONG KONG	2	0,21	31,2	***	10061,0	***	8503,3	***
47	SAN MARINO	1	0,10	22,1	***	7767,0	***	6564,5	***
48	SWEDEN	6	0,63	9,1	***	2964,0	***	2505,1	***
49	BULGARIA	4	0,42	6,1	***	2035,0	***	1719,9	***
50	AUSTRALIA	4	0,42	5,6	***	1842,0	***	1556,8	***

\*) on countries selected upon the amount of the foreign direct investment, in equivalent of currency, ranking

**Classification of the top 40 companies by foreign direct investment  
in the total subscribed capital, in equivalent of currency,  
during December 2005**

No. crt.	Companies	County	Country of origin of the majority investor	Amount of subscribed capital		
				Total in local currency	Total in equivalent of currency	Total in equivalent of currency
				mii RON	thousand USD	thousand EURO
0	1	2	3	4	5	6
1	A&D PHARMA HOLDINGS SA	BUCURESTI	OLANDA	1095044,8	360935,7	305054,5
2	KAUFLAND ROMANIA SCS	BUCURESTI	GERMANIA	339475,5	109694,1	92710,9
3	UPC ROMANIA SA	BUCURESTI	OLANDA	299999,9	96727,4	81751,7
4	ABN AMRO BANK (ROMANIA) SA	BUCURESTI	OLANDA	109555,7	35083,6	29651,9
5	RENAULT INDUSTRIE ROUMANIE SRL	ARGES	FRANTA	84201,5	28008,6	23672,3
6	MASSIV FOREST PRODUCTS SA	CARAS-SEVERIN	CIPRU	62803,3	20291,9	17150,2
7	DONASID SA	CALARASI	ELVETIA	47185,8	15230,7	15230,7
8	FERAL SRL	TULCEA	MAREA BRITANIE	34135,9	11869,2	10031,6
9	ALIA IMMOBILIARIA SA	BUCURESTI	SPANIA	36000,0	11612,9	9815,0
10	PIRELLI TYRES ROMANIA SRL	OLT	OLANDA	25642,4	8401,8	7101,0
11	EKR-ELEKTROKONTAKT ROMANIA SRL	ARAD	GERMANIA	25251,0	8045,8	6800,1
12	CREDISSON INTERNATIONAL SRL	BUCURESTI	CIPRU	20341,9	6657,5	5626,7
13	AVIVA ASIGURARI DE VIATA SA	BUCURESTI	MAREA BRITANIE	19015,8	6500,0	5493,6
14	H & E REINERT SRL	BRASOV	GERMANIA	18095,6	5816,7	4916,1
15	MEDIPLUS EXIM SA		OLANDA	14400,0	4630,0	3913,2
16	RGS SNAGOV RESORT SRL	BUCURESTI	S.U.A.	13684,8	4435,2	3748,5
17	ASIGURAREA CECCAR - ROMAS SA	ARGES	UNGARIA	13517,2	4429,0	3743,3
18	DELORIAN GROUP SA	BUCURESTI	SPANIA	13297,8	4309,9	3642,6
19	UKROM INTERTRADE SRL	BUCURESTI	ITALIA	8192,2	2822,0	2385,1
20	DSU ROMANIA SRL	GALATI	GERMANIA	6395,9	2047,9	1730,9
21	INFOMED FLUIDS SRL	BUCURESTI	ELVETIA	5445,4	1799,0	1520,5
22	AMERICAN RESIDENCES SRL	BUCURESTI	CIPRU	5220,0	1740,1	1470,7
23	DELIGNIT ROMANIA SA	MEHEDINTI	GERMANIA	5385,0	1725,0	1457,9
24	MAHLE COMPONENTE DE MOTOR SRL	TIMIS	AUSTRIA	5521,0	1724,6	1457,6
25	SOCIETATEA DE ASIGURARI AIG ROMANIA SA	BUCURESTI	S.U.A.	5136,7	1636,7	1383,3
26	UNICOM BUNKERING SA	BUCURESTI	MOLDOVA	4471,2	1558,5	1317,2
27	TRD - TNUVA ROMANIA DAIRIES SRL	BUCURESTI	ISRAEL	4756,0	1558,3	1317,1
28	SCHWARZMULLER ROMANIA SRL	BUCURESTI	AUSTRIA	4732,0	1452,8	1227,9
29	SOCIETATEA DE ASIGURARE-REASIGURARE CITY INSURANCE SA	BUCURESTI	ITALIA	3621,0	1284,0	1085,2
30	IMOFINANCE SRL	CLUJ	AUSTRIA	3563,4	1167,6	986,8
31	OMCO ROMANIA SRL	IASI	BELGIA	3255,5	1107,2	935,8
32	U.C.M. RESITA SA	CARAS-SEVERIN	ELVETIA	3403,6	1097,1	927,2
33	ALIN TRANS IMPEX SA	HUNEDOARA	OLANDA	3338,9	1084,4	916,5
34	PROVUS SERVICE PROVIDER SA	BUCURESTI	TURCIA	3157,0	1000,0	845,2
35	DOMENIA CREDIT SA	BUCURESTI	MAREA BRITANIE	2700,5	1000,0	845,2
36	BERE AZUGA SA	PRAHOVA	MOLDOVA	3080,0	980,6	828,8
37	VITI-POMICOLA SIMBURESTI SA	OLT	ELVETIA	2423,3	901,4	761,8

**Number of registered companies with foreign investment capital  
and amount of subscribed capital,  
between 1991 and 2004**

balance account at 30 April 2004	Number of companies		Amount of subscribed capital					
			Total on ROL		Total on currency		Total on currency	
	No.	%	mii RON	%	thousands USD	%	thousands EURO	%
0	1		2		3		4	
<b>1991 - 2004, out of which:</b>	<b>107401</b>	<b>93,3</b>	<b>26834355,7</b>	<b>100,0</b>	<b>13581918,9</b>	<b>100,0</b>	<b>10244798,7</b>	<b>100,0</b>
<b>1991</b>	5499	5,1	258165,5	1,0	1058260,8	7,8	798242,8	7,8
<b>1992</b>	11765	11,0	65153,0	0,2	573271,2	4,2	432416,7	4,2
<b>1993</b>	10583	9,9	92793,2	0,3	417844,8	3,1	315179,0	3,1
<b>1994</b>	11053	10,3	230535,9	0,9	881673,3	6,5	665043,4	6,5
<b>1995</b>	3400	3,2	67893,9	0,3	237717,0	1,8	179309,2	1,8
<b>1996</b>	3630	3,4	229256,3	0,9	573594,2	4,2	432660,3	4,2
<b>1997</b>	5251	4,9	232229,8	0,9	359912,8	2,6	271481,1	2,6
<b>1998</b>	8801	8,2	728612,4	2,7	755475,3	5,6	569852,7	5,6
<b>1999</b>	7383	6,9	1214843,7	4,5	944365,3	7,0	712331,8	7,0
<b>2000</b>	8567	8,0	1870247,9	7,0	839143,8	6,2	632963,5	6,2
<b>2001</b>	7175		4820820,8	18,0	1540810,8	11,3	1162228,7	11,3
<b>2002</b>	7518	7,0	3541822,9	13,2	1078746,2	7,9	813694,8	7,9
<b>2003</b>	6609	6,2	4441402,8	16,6	1288885,0	9,5	972201,9	9,5
<b>2004</b>	10167	9,5	9040577,5	33,7	3032218,4	22,3	2287192,8	22,3

*Note: column no. 1 representing number of new registered from that time. The amount of subscribed capital is composed by initial subscribed capital added with any increase of capital and decreased with the subscribed capital of erased companies*

Diagram no. 9

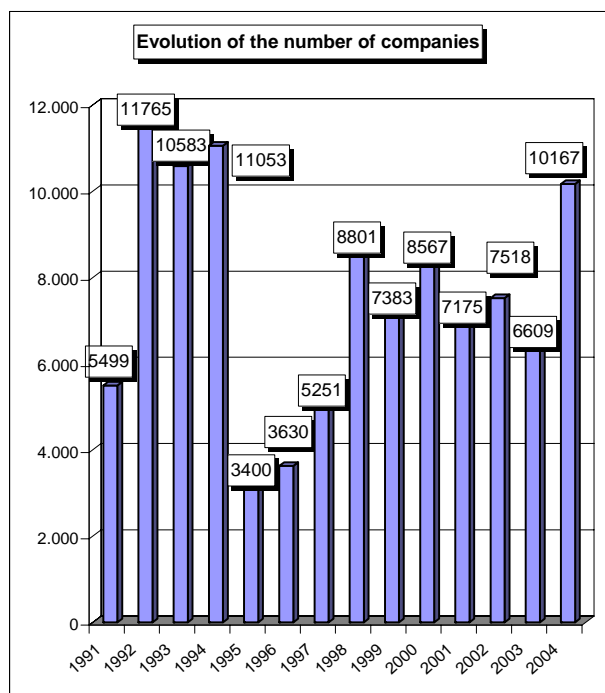


Diagram no. 10

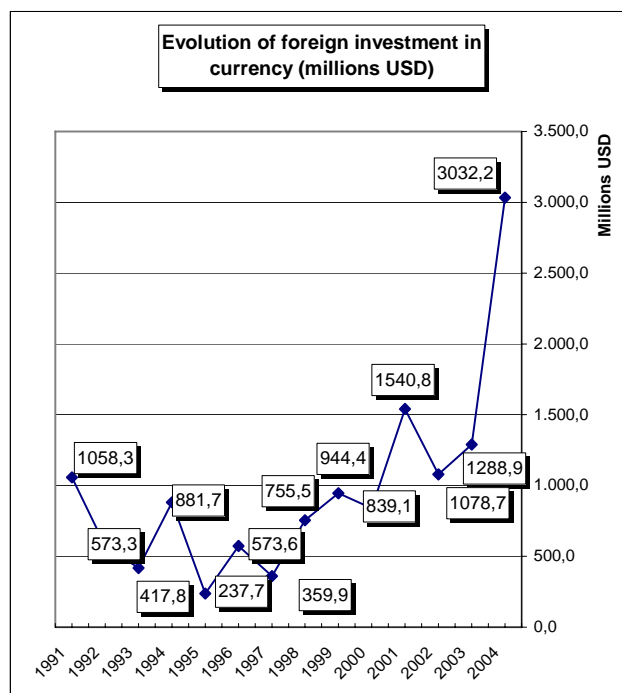


Table no. 22

**Number of registered companies, with foreign capital investment  
and the value of the invested capital,  
between 1991 and 2004**

balance account at 30 April 2004	Number of companies		Amount of subscribed capital						Order by:	
			Total on ROL		Total on currency		Total on currency			
	No.	%	mii RON	%	thousands USD	%	thousands EURO	%		
0	1		2		3		4		5	
<b>Total ROMANIA</b>	<b>107401</b>	<b>100,0</b>	<b>26834355,7</b>	<b>100,0</b>	<b>13581918,9</b>	<b>100,0</b>	<b>10244798,7</b>	<b>100,0</b>	*	**
ALBA	1007	0,9	172637,8	0,6	113907,8	0,8	85920,3	0,8	18	17
ARAD	2938	2,7	352635,7	1,3	185861,9	1,4	140195,1	1,4	6	12
ARGES	965	0,9	2687370,0	10,0	893825,5	6,6	674209,7	6,6	19	3
BACAU	838	0,8	448839,7	1,7	128719,1	0,9	97092,4	0,9	22	15
BIHOR	2980	2,8	469231,1	1,7	205925,2	1,5	155328,7	1,5	5	10
BISTRITA-NASAUD	698	0,6	53640,1	0,2	23283,4	0,2	17562,6	0,2	25	37
BOTOSANI	282	0,3	12579,3	0,0	5997,5	0,0	4523,9	0,0	37	41
BRASOV	2785	2,6	506737,0	1,9	216649,2	1,6	163417,8	1,6	7	9
BRAILA	477	0,4	35465,0	0,1	27801,3	0,2	20970,4	0,2	29	33
BUZAU	543	0,5	90085,6	0,3	35186,4	0,3	26541,0	0,3	28	31
CARAS-SEVERIN	762		260454,9	1,0	115081,9	0,8	86805,9	0,8	23	16
CALARASI	293	0,3	141277,6	0,5	49504,4	0,4	37341,0	0,4	36	28
CLUJ	4377	4,1	563900,5	2,1	400045,1	2,9	301752,7	2,9	3	7
CONSTANTA	3699	3,4	1378677,6	5,1	513837,7	3,8	387586,2	3,8	4	5
COVASNA	587	0,5	51297,4	0,2	44435,1	0,3	33517,3	0,3	26	30
DAMBOVITA	560	0,5	431516,7	1,6	155004,8	1,1	116919,6	1,1	27	13
DOLJ	1250	1,2	88485,5	0,3	196093,0	1,4	147912,3	1,4	15	11
GALATI	840	0,8	2129182,8	7,9	697325,1	5,1	525990,1	5,1	21	4
GIURGIU	299	0,3	27251,8	0,1	12486,9	0,1	9418,8	0,1	35	39
GORJ	255	0,2	4017,5	0,0	2266,4	0,0	1709,5	0,0	39	42
HARGHITA	1416	1,3	89864,6	0,3	52483,3	0,4	39588,0	0,4	13	25
HUNEDOARA	1135	1,1	123497,9	0,5	79481,6	0,6	59952,7	0,6	17	22
IALOMITA	243	0,2	15178,3	0,1	12022,6	0,1	9068,6	0,1	40	40
IASI	1456	1,4	92347,8	0,3	80558,7	0,6	60765,2	0,6	12	20
MARAMURES	1385	1,3	238634,3	0,9	94278,6	0,7	71114,1	0,7	14	19
MEHEDINTI	424	0,4	81279,7	0,3	30521,5	0,2	23022,3	0,2	30	32
MURES	2005	1,9	299337,9	1,1	135381,8	1,0	102118,1	1,0	10	14
NEAMT	704	0,7	132946,9	0,5	79844,2	0,6	60226,3	0,6	24	21
OLT	335	0,3	213287,2	0,8	74985,7	0,6	56561,5	0,6	34	24
PRAHOVA	1788	1,7	666164,1	2,5	376135,7	2,8	283718,0	2,8	11	8
SALAJ	382	0,4	30753,7	0,1	17248,6	0,1	13010,6	0,1	32	38
SATU MARE	1154	1,1	138889,7	0,5	78989,3	0,6	59581,4	0,6	16	23
SIBIU	2109	2,0	148398,1	0,6	111566,0	0,8	84153,9	0,8	9	18
SUCEAVA	885	0,8	81837,7	0,3	49810,9	0,4	37572,2	0,4	20	27
TELEORMAN	227	0,2	123155,4	0,5	52098,6	0,4	39297,8	0,4	41	26
TIMIS	6804	6,3	735000,6	2,7	470929,9	3,5	355220,9	3,5	2	6
TULCEA	274	0,3	59712,0	0,2	24275,1	0,2	18310,7	0,2		36
VASLUI	204	0,2	58228,3	0,2	24757,7	0,2	18674,6	0,2	42	35
VALCEA	414	0,4	51826,5	0,2	49433,9	0,4	37287,9	0,4	31	29
VRANCEA	368	0,3	15592,1	0,1	27399,2	0,2	20667,1	0,2	33	34
MUN. BUCURESTI	54597	50,8	11474219,4	42,8	6436236,4	47,4	4854832,9	47,4	1	1
ILFOV	2657	2,5	2058919,8	7,7	1200241,8	8,8	905338,6	8,8	8	2

\*) number of companies

\*\*) capital in equivalent currency

Table no. 23

**Number of registered companies, with foreign capital investment  
and the value of the invested capital, on economic development areas,  
between 1991 and 2004**

Economic development areas	Number of companies		Amount of subscribed capital						Order by:	
			Total on ROL		Total on currency		Total on currency			
	No.	%	mii RON	%	thousands USD	%	thousands EURO	%		
0	1		2		3		4		5	
<b>Total ROMANIA</b>	<b>107401</b>	<b>100,0</b>	<b>26834355,7</b>	<b>100,0</b>	<b>13581918,9</b>	<b>100,0</b>	<b>10244798,7</b>	<b>100,0</b>	*	**
NORTH-EAST	4369	4,1	826779,6	3,1	369688,2	2,7	278854,6	2,7	7	7
SOUTH-EAST	6201	5,8	3708715,1	13,8	1325824,9	9,8	1000065,5	9,8	5	3
SOUTH-MUNTENIA	4375	4,1	4091913,8	15,2	1551078,4	11,4	1169973,5	11,4	6	2
SOUTH-WEST OLTENIA	2678	2,5	438896,5	1,6	353300,6	2,6	266493,6	2,6	8	8
WEST	11639	10,8	1471589,1	5,5	851355,4	6,3	642174,7	6,3	2	4
NORTH-WEST	10976	10,2	1495049,4	5,6	819770,2	6,0	618350,1	6,0	3	5
CENTER	9909	9,2	1268272,9	4,7	674423,2	5,0	508715,3	5,0	4	6
BUCHAREST-ILFOV	57254	53,3	13533139,3	50,4	7636478,2	56,2	5760171,4	56,2	1	1

Table no. 24

**Number of registered companies, with foreign capital investment  
and the value of the invested capital, on continents  
between 1991 and 2004**

Continent	Number of companies		Amount of subscribed capital						Order by:	
			Total on ROL		Total on currency		Total on currency			
	No.	%	mii ROL	%	thousands USD	%	thousands EURO	%		
0	1		2		3		4		5	
<b>Total ROMANIA</b>	<b>107401</b>	<b>100,0</b>	<b>26834355,7</b>	<b>100,0</b>	<b>13581918,9</b>	<b>100,0</b>	<b>10244798,7</b>	<b>100,0</b>	*	**
EUROPE	69105	64,3	21341127,7	79,5	10758227,4	79,2	9092605,3	88,8	1	1
AFRICA	2252	2,1	33620,1	0,1	37221,5	0,3	28076,1	0,3	4	6
NORTH AMERICA	4201	3,9	1058413,0	3,9	888348,9	6,5	670078,8	6,5	3	2
SOUTH AMERICA	1705	1,6	1168404,0	4,4	435296,1	3,2	328342,4	3,2	5	5
ASIA	34066	31,7	971403,6	3,6	742852,0	5,5	560330,9	5,5	2	3
OCEANIA	515	0,5	2261331,2	8,43	719860,2	5,30	542988,3	5,30	6	4

Table no. 25

**Number of registered companies, with foreign capital investment  
and the value of the invested capital, on economic groups,  
between 1991 and 2004**

Economic groups	Number of companies		Amount of subscribed capital							
			Total on ROL		Total on currency		Total on currency			
	No.	%	mii ROL	%	thousands USD	%	thousands EURO	%		
0	1		2		3		4		5	
<b>Total ROMANIA</b>	<b>107401</b>		<b>26834355,7</b>		<b>13581918,9</b>		<b>10244798,7</b>		*	**
U.E.	46834	43,6	18367987,7	68,4	8668954,3	63,8	6538964,9	63,8	2	2
A.E.L.S.	1724	1,6	764683,0	2,8	492404,8	3,6	371419,4	3,6	4	3
O.E.C.D.	69064	64,3	21547177,7	80,3	11174451,4	82,3	8428853,5	82,3	1	1
C.E.F.T.A.	6232	5,8	6761706,3	25,2	393422,8	2,9	296757,6	2,9	3	4

Note: Each economic group's weight is calculated in total Romania.

The weights sum is different from 100% because each country may be part of one or many economic groups

\*) number of companies

\*\*) capital in equivalent currency

\*\*\* Less than 0.01%

Diagram no. 11

Percentage of companies with foreign investment, between 1991 and 2004, on fields of activity\*

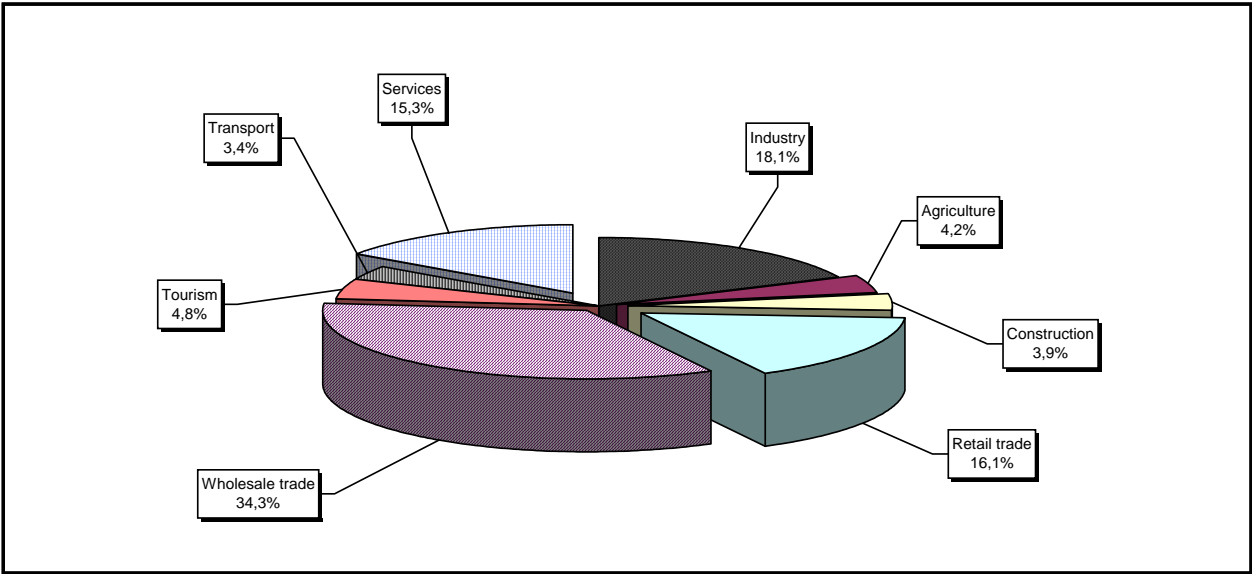
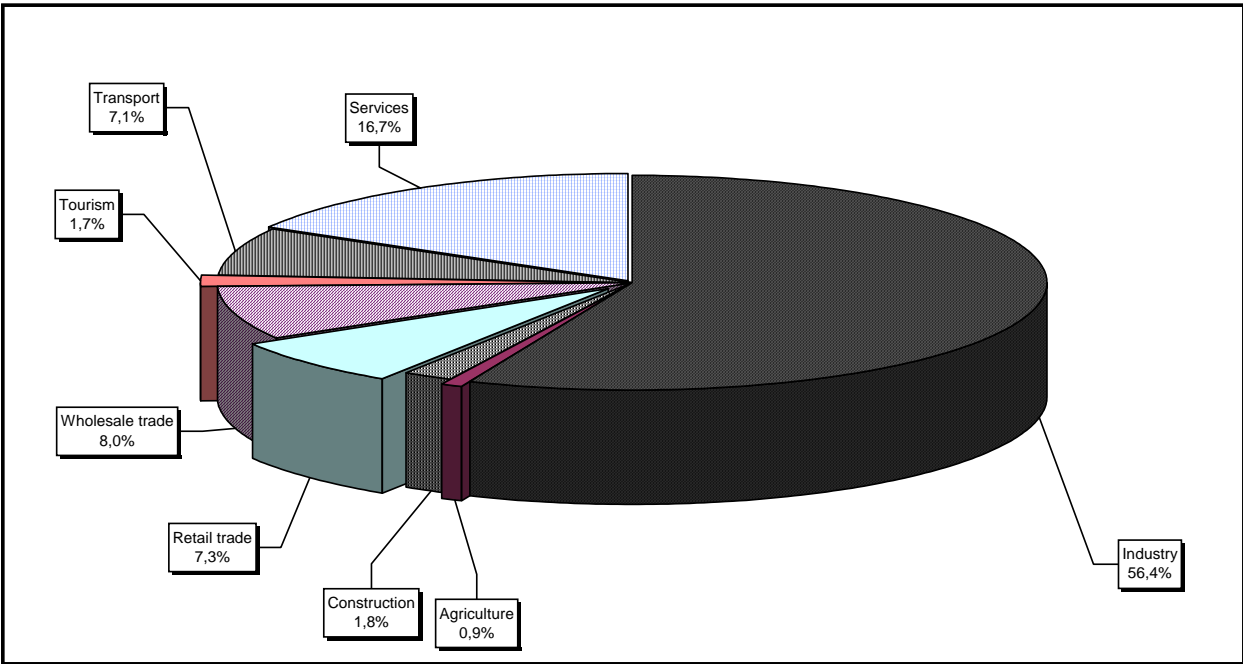


Diagram no. 12

Percentage of foreign currency invested capital\*\* in companies with foreign investment, between 1991 and 2004, on fields of activity



\*) Calculated on main activity

\*\*) Calculated on the total amount in currency

Table no. 26

**Countries classification on foreign  
investment capital registered  
between 1991 and December 2004**

No. crt.	Countries	Number of companies		Amount of subscribed capital					
				Total on ROL		Total on currency		Total on currency	
		No.	%	mii RON	%	thousands USD	%	thousands EURO	%
0	1	2		3		4		5	
	<b>Total ROMANIA, out of which:</b>	<b>107401</b>	<b>100,00</b>	<b>26834355,7</b>	<b>100,00</b>	<b>13581918,9</b>	<b>100,00</b>	<b>10244798,7</b>	<b>100,00</b>
1	NETHERLAND	2021	1,88	4251656,0	15,84	2111938,8	15,55	1593028,8	15,55
2	AUSTRIA	3197	2,98	4461542,5	16,63	1663126,5	12,25	1254491,1	12,25
3	FRANCE	3647	3,40	3304525,6	12,31	1511120,4	11,13	1139833,4	11,13
4	GERMANY	12124	11,29	2141516,7	7,98	1090584,4	8,03	822624,4	8,03
5	U.S.A.	4201	3,91	1058413,0	3,94	888348,9	6,54	670078,8	6,54
6	ITALY	16910	15,74	1199533,6	4,47	711397,3	5,24	536604,7	5,24
7	ANTILELE OLANDEZE	9	***	2080294,4	7,75	649835,9	4,78	490169,2	4,78
8	GREAT BRITAIN	1355	1,26	941312,8	3,51	590542,7	4,35	445444,5	4,35
9	CYPRUS	1957	1,82	1332340,8	4,97	565469,6	4,16	426531,9	4,16
10	TURKEY	9229	8,59	484817,7	1,81	454376,9	3,35	342735,1	3,35
11	SWITZERLAND	1396	1,30	647033,6	2,41	397972,2	2,93	300189,1	2,93
12	I.VIRGINE BRIT.	5008	4,66	595103,0	2,22	347074,1	2,56	261796,9	2,56
13	HUNGARY	209	0,19	1093285,5	4,07	343888,3	2,53	259393,8	2,53
14	GREECE	2925	2,72	610407,0	2,27	335506,5	2,47	253071,5	2,47
15	LUXEMBOURG	261	0,24	474996,4	1,77	271472,7	2,00	204771,0	2,00
16	SPAIN	86	0,08	49309,2	0,18	217379,2	1,60	163968,4	1,60
17	CHINA	866	0,81	143849,6	0,54	174892,2	1,29	131920,7	1,29
18	SWEDEN	8461	7,88	373457,3	1,39	160217,3	1,18	120851,4	1,18
19	BELGIUM	830	0,77	257964,0	0,96	111206,0	0,82	83882,4	0,82
20	WITH OUT CITIZENSHIP	1353	1,26	107138,2	0,40	76651,9	0,56	57818,3	0,56
21	LIECHTENSTEIN	21	0,02	669,7	***	75662,6	0,56	57072,1	0,56
22	JAPAN	163	0,15	182423,5	0,68	68837,4	0,51	51923,9	0,51
23	A.R. OF SYRIA	159	0,15	86408,9	0,32	67670,9	0,50	51043,9	0,50
24	CANADA	5364	4,99	74133,5	0,28	67372,1	0,50	50818,5	0,50
25	SOUTH KOREA	1026	0,96	46099,8	0,17	58460,9	0,43	44096,8	0,43
26	LEBANON	5849	5,45	64119,2	0,24	55212,9	0,41	41646,9	0,41
27	IRAQ	3409	3,17	67860,2	0,25	49879,8	0,37	37624,2	0,37
28	MARSHALL ISLANDS	7	***	118946,9	0,44	36794,5	0,27	27754,0	0,27
29	ISRAEL	2947	2,74	34384,7	0,13	31531,4	0,23	23784,0	0,23
30	IRELAND	2661	2,48	24338,5	0,09	22807,3	0,17	17203,4	0,17
31	FORMER YUGOSLAVIE	749	0,70	9175,1	0,03	22709,4	0,17	17129,7	0,17
32	DENMARK	29	0,03	37460,8	0,14	22460,4	0,17	16941,8	0,17
33	IRAN	12	0,01	21710,3	0,08	22189,1	0,16	16737,1	0,16
34	PANAMA	297	0,28	50289,2	0,19	20402,8	0,15	15389,8	0,15
35	ICELAND	122	0,11	13528,3	0,05	17809,6	0,13	13433,7	0,13
36	POLAND	267	0,25	12756,7	0,05	16579,6	0,12	12505,9	0,12
37	JORDAN	3095	2,88	16646,4	0,06	16510,5	0,12	12453,8	0,12
38	MOLDAVIA	1935	1,80	15412,6	0,06	15082,2	0,11	11376,5	0,11
39	GIBRALTAR	249	0,23	35442,2	0,13	14943,1	0,11	11271,5	0,11
40	THAILANDA	148	0,14	2803,8	0,01	12041,8	0,09	9083,1	0,09
41	NEW ZEELAND	1308	1,22	13558,8	0,05	11769,6	0,09	8877,7	0,09
42	BULGARIA	588	0,55	13140,3	0,05	11749,0	0,09	8862,2	0,09
43	AUSTRALIA	12	0,01	35212,2	0,13	11072,0	0,08	8351,6	0,08
44	EGYPT	440	0,41	7618,2	0,03	10714,0	0,08	8081,5	0,08
45	CZECH REPUBLIC	234	0,22	6475,4	0,02	9554,1	0,07	7206,6	0,07
46	SLOVENIA	52	0,05	23841,2	0,09	9171,5	0,07	6918,0	0,07
47	CAMEROON	15	0,01	3173,9	0,01	9036,6	0,07	6816,3	0,07
48	FINLAND	34	0,03	8261,8	0,03	7884,7	0,06	5947,4	0,06
49	INS. VIRGINE AMR.	122	0,11	16384,1	0,06	6848,9	0,05	5166,1	0,05
50	PORTUGAL	19	0,02	15597,2	0,06	6702,1	0,05	5055,4	0,05
51	NORTH KOREA	8	***	5273,9	0,02	6461,8	0,05	4874,1	0,05
52	MALTA	21	0,02	20524,9	0,08	6235,1	0,05	4703,1	0,05
53	LIBERIA	31	0,03	14642,7	0,05	5988,8	0,04	4517,4	0,04
54	NORWAY	36	0,03	2767,4	0,01	5497,1	0,04	4146,4	0,04



