



MINISTRY OF JUSTICE

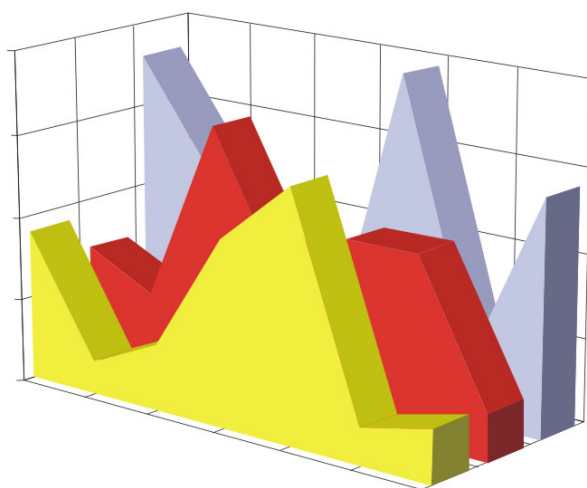
THE NATIONAL TRADE REGISTER OFFICE

Bucharest, 2, Octavian Goga Blvd., sector 3; Phone: +40 - 21 - 320.60.13; Fax: +40 - 21 - 320.58.29; Website: [www.onrc.ro](http://www.onrc.ro); E-mail: [onrc@onrc.ro](mailto:onrc@onrc.ro)

# COMPANIES BY FOREIGN DIRECT INVESTMENT

## STATISTICAL SYNTHESIS

**OF THE NATIONAL TRADE REGISTER'S DATA  
ON 31<sup>th</sup> OF AUGUST 2004 - PROVISORY DATA**



- No. 76 -

**MINISTRY OF JUSTICE  
THE NATIONAL TRADE REGISTER OFFICE**

---

- Operations such as incorporation of companies, changes in statutory documents and strike-off dissolution of companies are being regulated by Law No.26/1990 reissued, Law No.31/1990, reissued, OUG No.76/2001, reissued and Methodology Norms No. P/608/1998.
  
- This synthesis presents the trends on operations regarding companies by foreign direct investment registered in The Trade Register Office attached to the law court of Bucharest and in The Trade Register Offices attached to the law court in each county of Romania.
  
- Information provided by the Central Trade Register concern operations compulsory by law to be registered in the trade registers attached to the law courts.

*• No part of the content of this publication, in original or in any modified format, August be reproduced, stored in a retrieval system, or transmitted, in any form or by any means, without the prior permission in writing of The Ministry of Justice – The National Trade Register Office.*

*• The content of this publication August be referred to in articles, studies, books, as supporting or explanatory data under the condition only, the source of the information to be clearly and precisely specified.*

*Printed:August 2004*

# Table of Contents

	Page
<b>1 Explanatory Note</b>	<b>1</b>
<b>2.1 Tables and statistical graphics for August 2004</b>	<b>3</b>
Table No.1 – Number of companies by foreign direct investment and the amount of the subscribed capital, balance account at 31 <sup>st</sup> of August 2004	3
Diagram No. 1 – The structure of the number of companies	3
Diagram No. 2 – The structure of investment, in equivalent of currency	3
Table No.2 – Classification of companies by foreign direct investment by the investors' countries of origin, balance account at 31 <sup>st</sup> of August 2004	4
Diagram No. 3 – The structure upon sector of activity of companies by foreign direct investment, incorporated between 1991 and August 2004	5
Diagram No. 4 – The structure upon sector of activity in the amount of subscribed capital in companies by foreign direct investment, during 1991-August 2004	5
Table No. 3 – The number of companies by foreign direct investment and the amount of the subscribed capital, balance account at the end of each month of 2004	6
Diagram No. 5 – Trend in the number of companies' balance account	6
Diagram No. 6 – Trend of foreign investment balance account, in equivalent of currency	6
Table No. 4 – Comparative data on new companies by foreign direct investment and the subscribed capital, between January– August 2003 and 2004	7
Diagram No. 7 – Dynamics of the number of new companies by foreign direct investment, between January– August and 2004	7
Diagram No. 8 – Dynamics of the amount of foreign direct investment in new companies, between January– August 2003 and 2004	7
Table No. 5 – Incorporation of companies by foreign direct investment, during August 2004	8
Table No. 6 – Statutory increase of the issued capital, in companies by foreign direct investment during August 2004	9
Table No. 7 – Strike-off of companies by foreign direct investment, from the trade register, during August 2004	10
Table No. 8 – Changes by cession in the issued capital of the companies by foreign direct investment, during August 2004	11
Table No. 9 – Incorporation of companies by foreign direct investment, according to the development regions, during August 2004	12
Table No. 10 – Statutory increase in the issued capital of companies by foreign direct investment according to the development regions, during August 2004	12
Table No. 11 – Strike-off of companies by foreign direct investment and the amount of their issued capital, according to the development regions, during August 2004	12
Table No. 12 – Incorporation of companies by foreign direct investment, by continents according to the investors' country of origin, during August 2004	13
Table No. 13 – Increase in the issued capital of companies by foreign direct investment, by continents according to the investors' country of origin, during August 2004	13
Table No. 14 – Strike-off of companies by foreign direct investment and their issued capital, by continents according to the investors' country of origin, during August 2004	13
Table No. 15 – Incorporation of companies by foreign direct investment, by economical groups of countries according to the investors' country of origin, during August 2004	14
Table No. 16 – Increase in the issued capital of companies by foreign direct investment, by economical groups of countries according to the investors' country of origin, during August 2004	14
Table No. 17 – Strike-off of companies by foreign direct investment and their issued capital, by economical groups of countries according to the investors' country of origin, during August 2004	14

---

Table No. 18 – Classification by countries of origin of investors in companies by foreign direct investment, incorporated during August 2004	15
Table No. 19 – Classification by investors’ countries of origin according to the amount of the increase in the issued capital, during August 2004	16
Table No. 20 – Classification of the top 40 companies by foreign direct investment in the total subscribed capital, in equivalent of currency, during August 2004	17
<b>2.2 Cumulative data for 1991 – 2003</b>	<b>18</b>
Table No. 21 – Number of registered companies with foreign investment capital and amount of subscribed capital, between 1991 and 2003	18
Diagram No. 9 – Evolution of the number of companies	18
Diagram No. 10 – Evolution of foreign investment	18
Table No. 22 – Number of registered companies, with foreign capital investment and the value of the invested capital, between 1991 and 2003	19
Table No. 23 – Number of registered companies, with foreign capital investment and the value of the invested capital, on economic development areas, between 1991 and 2003	20
Table No. 24 – Number of registered companies, with foreign capital investment and the value of the invested capital, on continents between 1991 and 2003	20
Table No. 25 – Number of registered companies, with foreign capital investment and the value of the invested capital, on economic groups, between 1991 and 2003	20
Diagram No. 11 – Percentage of companies with foreign investment, between 1991 and 2003, on fields of activity	21
Diagram No. 12– Percentage of foreign currency invested capital in companies with foreign investment, between 1991 and 2003, on fields of activity	21
Table No. 26 – Countries classification on foreign investment capital registered between 1991 and December 2003	22

## Explanatory Note

- “**Company by foreign direct investment**” should be understood as any company partially or entirely set-up with the contribution in issued capital of physical or legal persons, resident or having the registered office outside Romania’s state frontiers.

- “**Foreign investor**” is any physical or legal person resident or having the business headquarter outside Romania’s borders, being associate/shareholder in a company registered in Romania.

- “**Social capital**” known as well as “issued capital” or “initial capital” is the total contribution in cash and assets subscribed by shareholders/associates while setting-up and registering a company or while increasing the initial capital during the company’s life.

The capital *subscribed* by a foreign investor should be, due to the Romanian legislation in force, in local currency ROL or/and in other convertible currency.

**The increase in capital** by changes in the statutory documents includes:

- foreign investors’ contributions from new own resources, in cash and/or assets, in ROL and/or currency;
- contributions of foreign investors from dividends obtained in Romania;
- getting in possession of equities/shares by a non-resident person from a resident one.

**The changes in capital by decrease/(increase) through cession** include:

- the contributions in capital of non-resident associates/shareholders yielded to/(received from) resident associates/shareholders, in ROL/currency;

- The **foreign direct investment in Romania ( Is )** equals to the total value of the direct foreign investment subscribed in the new registered company ( **I** ) *plus* the increase in issued capital through statutory documents( **M** ), *plus/minus* the cession of the issued capital *by/to* resident associates/shareholders ( **C** ), *minus* the subscribed capital in the companies being struck-off from the Trade Register ( **R** ), that is:

$$\mathbf{Is = I + M \pm C - R}$$

### Usual Terms:

- **incorporation** – represents the registration of the company in the trade registry awarding the quality of legal person.

- **other statutory documents** – represent the official registration of the changes occurred in a company’s life, such as: changes of the registered office address, increase or decrease of the issued capital, merger, liquidation, strike-off, etc.

- **strike-off** – represents the removal of a company from the trade registry, due to dissolution and liquidation, being also the very moment the company loses its quality of legal person. Data also include the companies under the provisions of Law No. 314/2001.

- **Operations** represent all the records in the trade registry including incorporations, other statutory documents and strike-off of companies by foreign direct investment, irrespective of the object of activity and the company’s type.

• **Terms used in tables and charts**

➤ **Number of companies:** depending on the specific table represents either the number of companies incorporated in the reference period, or the number of companies registering an increase of the issued capital, or the number of companies being struck-off from the trade registry.

➤ **Amount of the subscribed capital:**

- **total, in ROL:** the amount of the subscribed capital resulted from adding the amount subscribed in the local currency/ROL and the amount subscribed in foreign convertible currency being expressed in ROL, according to the exchange rate communicated by the National Bank of Romania at the date the deed was issued.

- **total, in equivalent of currency:**

**USD** : the amount of the resulted from adding and expressing in USD the convertible currency and the local currency (ROL), according to the exchange rate communicated by the National Bank of Romania at the date the deed was issued.

**Euro** : the balance account registered in the end of each month, calculated in equivalent of USD and expressed in Euro according to the exchange rate EUR/USD communicated by National Bank of Romania in the last working day of the due month.

➤ **Regional development:**

*North-East:* Suceava, Botoşani, Neamţ, Iaşi, Bacău, Vaslui.

*South-East:* Vrancea, Galaţi, Buzău, Brăila, Tulcea, Constanţa.

*South-Muntenia:* Argeş, Dâmboviţa, Prahova, Teleorman, Giurgiu, Călăraşi, Ialomiţa.

*South-West Oltenia:* Gorj, Vâlcea, Dolj, Mehedinţi, Olt.

*West:* Arad, Caraş-Severin, Hunedoara, Timiş.

*North-West:* Bihor, Bistriţa, Cluj, Satu Mare, Sălaj, Maramureş.

*Center:* Alba, Braşov, Covasna, Harghita, Mureş, Sibiu.

*Bucharest-Ilfov:* Bucureşti, Ilfov.

Source:

The integrated IT system of the trade registry is designed by The National Trade Registry Office according to the provisions of the related legislation in force. The source of information is the computerised system of the trade registers handled by the Trade Register Offices attached to the law courts.

**Number of companies by foreign direct investment  
and the amount of the subscribed capital,  
balance account at 31 August 2004**

Balance account by end of period	Number of companies		Amount of subscribed capital					
			Total in ROL		Total in currency		Total in currency	
	No.	%	million ROL	%	thousand USD	%	thousand EURO	%
<b>0</b>	<b>1</b>		<b>2</b>		<b>3</b>		<b>4</b>	
31 August 2004, out of which	103701	106,5	216161011,5	119,9	11809177,9	112,4	9834908,3	113,1
at 31 December 2003	97401	100,0	180249550,3	100,0	10506605,1	100,0	8692044,6	100,0

*Note: column No. 1 shows the number of companies incorporated in the due period. The data concerning the amount of the subscribed capital include the records on the issued capital in companies incorporated in the related period plus the records of increase in capital and minus the subscribed capital in companies being struck-off from the trade register in the same period. The percentage inserted in column No. 1,2,3 and 4 shows the trend compared to the records of December 2003.*

Diagram no. 1

Diagram no. 2

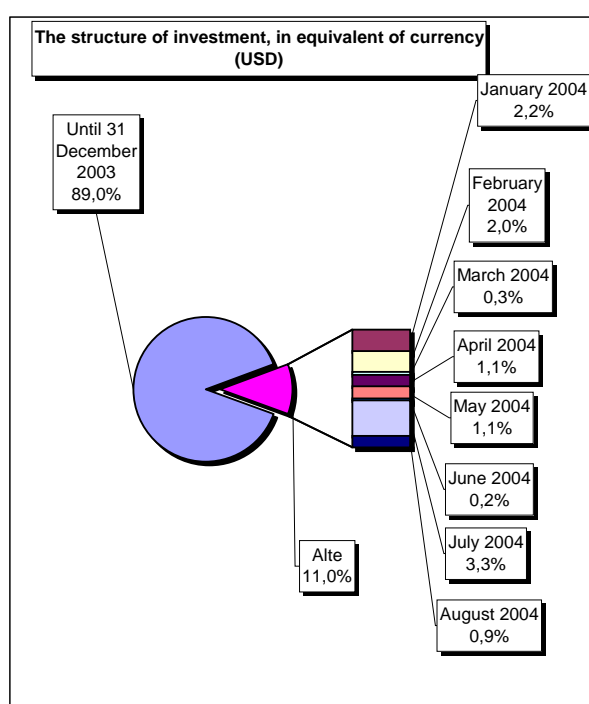
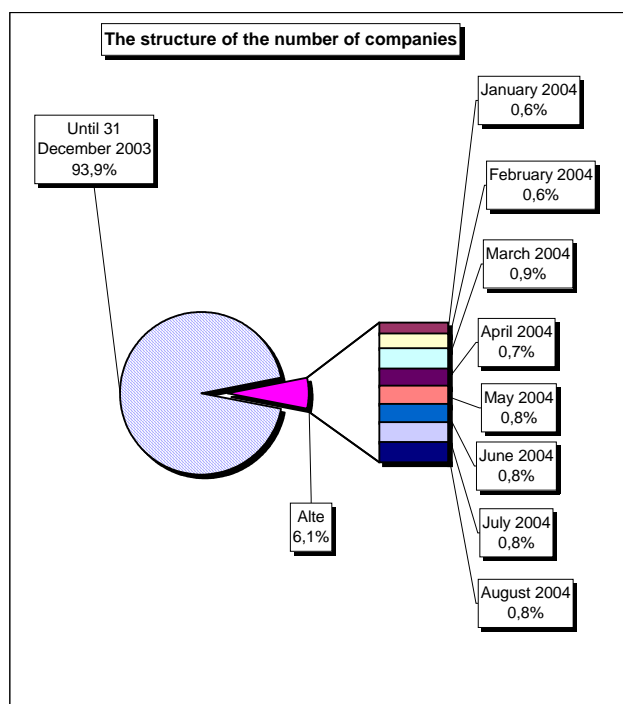


Table no. 2

**Classification\* of companies by foreign direct investment  
by the investors' countries of origin,  
balance account at 31 August 2004**

No. crt.	Countries	Companies by foreign investment		Amount of subscribed capital					
				Total in local currency		Total in equivalent of currency		Total in equivalent of currency	
		No.	%	million ROL	%	thousand USD	%	thousand EURO	%
0	1	2		3		4		5	
	<b>Total ROMANIA</b>	<b>103701</b>	<b>100,0</b>	<b>216161011,5</b>	<b>100,0</b>	<b>11809177,9</b>	<b>100,0</b>	<b>9834908,3</b>	<b>100,0</b>
1	NETHERLAND	1911	1,84	40392392,9	18,69	2009499,5	17,02	1662445,6	16,90
2	FRANCE	3472	3,35	32766461,2	15,16	1503311,5	12,73	1243679,6	12,65
3	GERMANY	11724	11,31	17702544,6	8,19	1015611,2	8,60	840208,4	8,54
31	U.S.A.	4055	3,91	10131942,3	4,69	874856,0	7,41	723762,6	7,36
5	ITALY	15941	15,37	9885325,5	4,57	650148,7	5,51	537863,7	5,47
6	ANTILELE OLANDEZE	9	***	20136295,6	9,32	629971,9	5,33	521171,6	5,30
7	AUSTRIA	3079	2,97	15114726,9	6,99	628754,5	5,32	520164,4	5,29
8	CYPRUS	1267	1,22	8870346,0	4,10	577373,1	4,89	477657,0	4,86
9	GREAT BRITAIN	1840	1,77	10970788,1	5,08	520980,8	4,41	431003,9	4,38
10	TURKEY	9017	8,70	4658437,1	2,16	446969,0	3,78	369774,5	3,76
11	HUNGARY	4801	4,63	5639220,4	2,61	337845,9	2,86	279497,7	2,84
12	GREECE	2796	2,70	5801500,9	2,68	327820,4	2,78	271203,7	2,76
13	SWITZERLAND	1336	1,29	6158847,7	2,85	307634,2	2,61	254503,8	2,59
14	LUXEMBOURG	246	0,24	4723423,7	2,19	266855,7	2,26	220767,9	2,24
15	SOUTH KOREA	83	0,08	493072,8	0,23	217366,3	1,84	179825,7	1,83
16	SPAIN	764	0,74	1406153,9	0,65	174060,1	1,47	143998,7	1,46
17	CHINA	8341	8,04	2978711,0	1,38	137279,9	1,16	113570,8	1,15
18	SWEDEN	818	0,79	2572439,2	1,19	111261,6	0,94	92046,0	0,94
19	WITH OUT CITIZENSHIP	21	0,02	7635,2	***	75691,1	0,64	62618,7	0,64
20	BELGIUM	1274	1,23	999111,7	0,46	72257,0	0,61	59777,7	0,61
21	A.R. OF SYRIA	5351	5,16	708483,9	0,33	68806,9	0,58	56923,5	0,58
22	JAPAN	149	0,14	1799513,2	0,83	68093,5	0,58	56333,3	0,57
23	I.VIRGINE BRIT.	201	0,19	1642866,1	0,76	65593,3	0,56	54264,9	0,55
24	LIECHTENSTEIN	155	0,15	749165,9	0,35	64080,2	0,54	53013,1	0,54
25	CANADA	982	0,95	458951,0	0,21	58425,0	0,49	48334,6	0,49
26	PORTUGAL	114	0,11	1751205,3	0,81	54483,5	0,46	45073,9	0,46
27	IRAQ	5804	5,60	601621,1	0,28	54029,0	0,46	44697,8	0,45
28	LEBANON	3371	3,25	623722,0	0,29	48239,1	0,41	39907,9	0,41
29	MARSHALL ISLANDS	7	***	1178062,5	0,54	36455,6	0,31	30159,5	0,31
30	ISRAEL	2792	2,69	327844,6	0,15	31262,7	0,26	25863,5	0,26
31	GIBRALTAR	30	0,03	461482,4	0,21	25693,7	0,22	21256,3	0,22
32	FORMER YUGOSLAVIE	744	0,72	91735,0	0,04	22740,7	0,19	18813,2	0,19
33	IRAN	2639	2,54	221459,4	0,10	22137,5	0,19	18314,2	0,19
34	ICELAND	12	0,01	198271,2	0,09	20352,0	0,17	16837,0	0,17
35	DENMARK	281	0,27	444974,6	0,21	18466,7	0,16	15277,3	0,16
36	PANAMA	119	0,11	135152,5	0,06	17758,0	0,15	14691,1	0,15
37	IRELAND	245	0,24	124656,7	0,06	16478,9	0,14	13632,9	0,14
38	JORDAN	3083	2,97	156994,2	0,07	16121,5	0,14	13337,2	0,14
39	MOLDAVIA	1804	1,74	143708,5	0,07	14880,2	0,13	12310,3	0,13
40	KUWEIT	147	0,14	28027,9	0,01	12042,1	0,10	9962,4	0,10
41	EGYPT	1293	1,25	128255,3	0,06	11580,7	0,10	9580,6	0,10
42	POLAND	237	0,23	236257,9	0,11	11559,5	0,10	9563,1	0,10
43	BULGARIA	569	0,55	111146,5	0,05	11085,5	0,09	9170,9	0,09
44	NEW ZEELAND	11	0,01	352121,0	0,16	11072,1	0,09	9159,8	0,09
45	AUSTRALIA	423	0,41	38624,7	0,02	9431,5	0,08	7802,6	0,08
46	CZECH REPUBLIC	224	0,22	60145,6	0,03	9420,4	0,08	7793,4	0,08
47	CAMEROON	13	0,01	31735,4	0,01	9036,6	0,08	7475,9	0,08
48	INS. VIRGINE AMR.	34	0,03	82630,5	0,04	7883,9	0,07	6522,3	0,07
49	CAYMAN ISLANDS	8	***	52718,4	0,02	6461,2	0,05	5345,3	0,05
50	NORTH KOREA	20	0,02	205247,6	0,09	6235,1	0,05	5158,3	0,05

\*) includes countries selected upon the amount of the foreign direct investment, in equivalent of currency USD, ranking on a descending scale (col 4)

\*\*\* Less than 0,01%

Diagram no. 3

The structure upon sector of activity\* of companies by foreign direct investment, incorporated between 1991 and August 2004

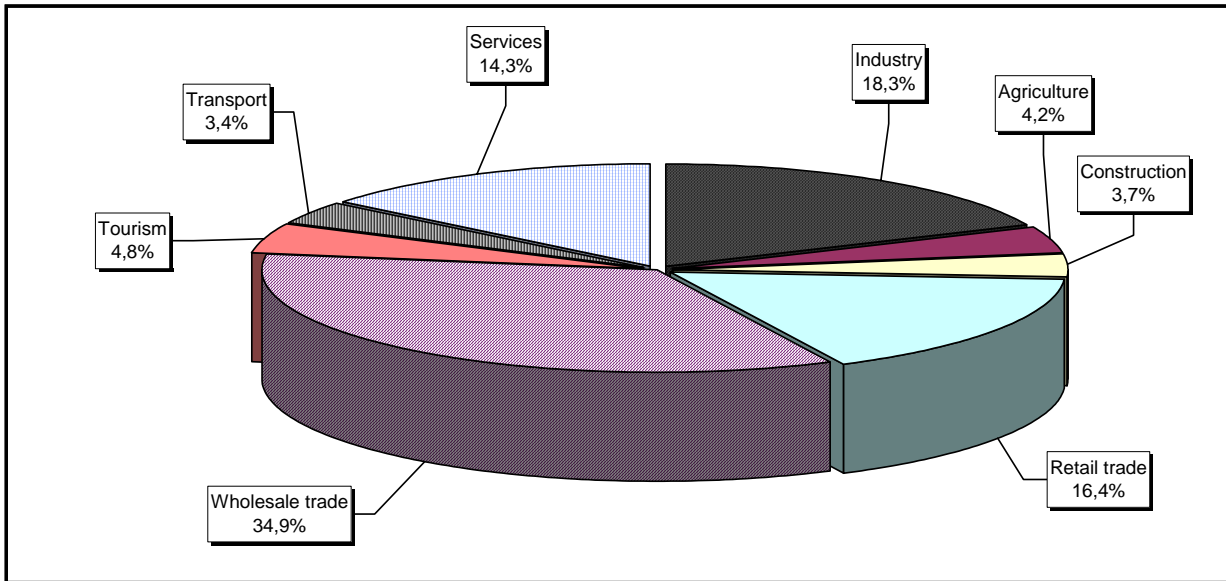
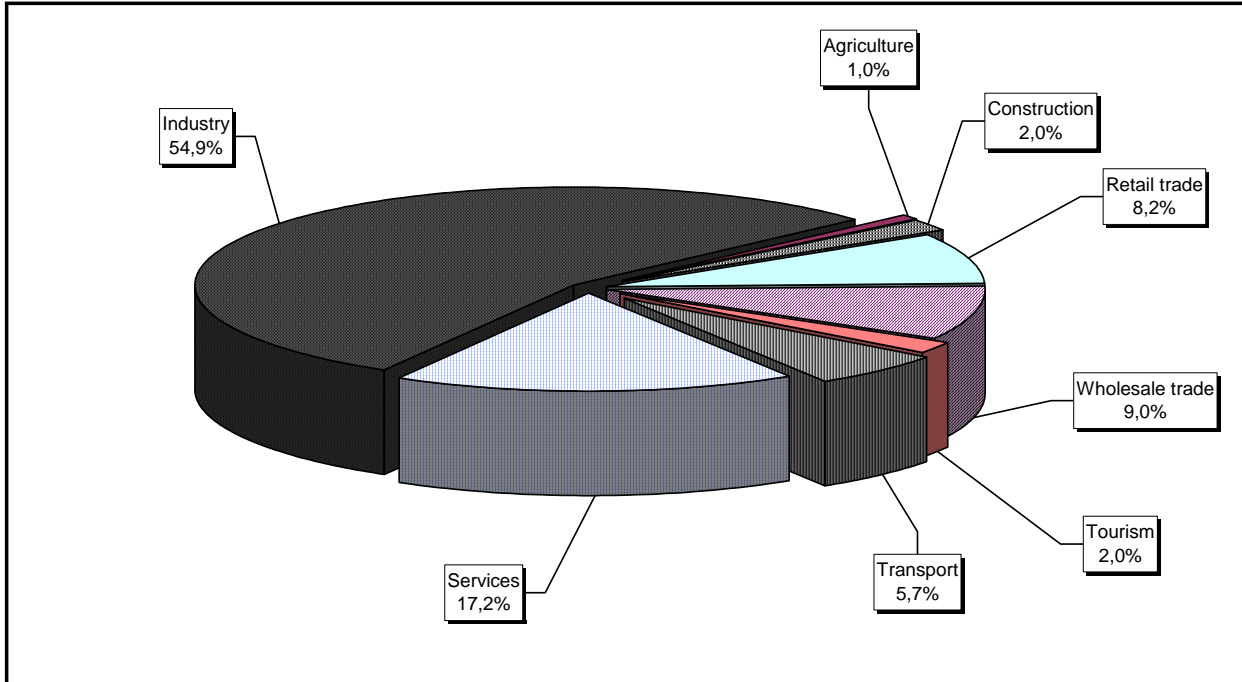


Diagram no. 4

The structure upon sector of activity in the amount of subscribed capital\*\* in companies by foreign direct investment, during 1991 - August 2004



\*) Calculated upon the main sector of activity declared

\*\*) Calculated upon the total amount of the subscribed capital, in equivalent of currency (USD)

Table no. 3

**The number of companies by foreign direct investment  
and the amount of the subscribed capital,  
balance account in the end of each month of 2004**

balance account at 30 April 2004	Number of companies		Amount of subscribed capital					
			Total in local currency		Total in equivalent of currency		Total in equivalent of currency	
	No.	%	million ROL	%	thousand USD	%	thousand EURO	%
0	1		2		3		4	
DECEMBER 2003	97401	100,0	180249550,3	100,0	10506605,1	100,0	8692044,6	100,0
JANUARY 2004	97978	100,6	184495155,4	102,4	10764664,9	102,5	8905535,8	102,5
FEBRUARY 2004	98637	101,3	191126273,0	106,0	10995181,9	104,7	9096240,9	104,7
MARCH 2003	99555	102,2	190945495,3	105,9	11025968,6	104,9	9121710,6	104,9
APRIL 2003	100328	103,0	195228266,7	108,3	11153653,2	106,2	9227343,2	106,2
MAY 2003	101153	103,9	199916353,5	110,9	11288124,6	107,4	9338590,5	107,4
JUNE 2002	101977	104,7	200993244,5	111,5	11310272,0	107,6	9356912,9	107,6
JULY 2002	102854	105,6	213697110,9	118,6	11701664,5	111,4	9748305,5	112,2
AUGUST 2002	103701	106,5	216161011,5	119,9	11809178	112,4	9834908	113,1

*Note: column no. 1 shows the number of companies incorporated in the due period. The data concerning the amount of the subscribed capital include the records on the issued capital in companies incorporated in the related period plus the records of increase in capital and minus the subscribed capital in companies being struck-off from the trade register in the same period. The percentage inserted in column No. 1,2,3 and 4 shows the trend compared to the records of December 2003.*

Diagram no. 5

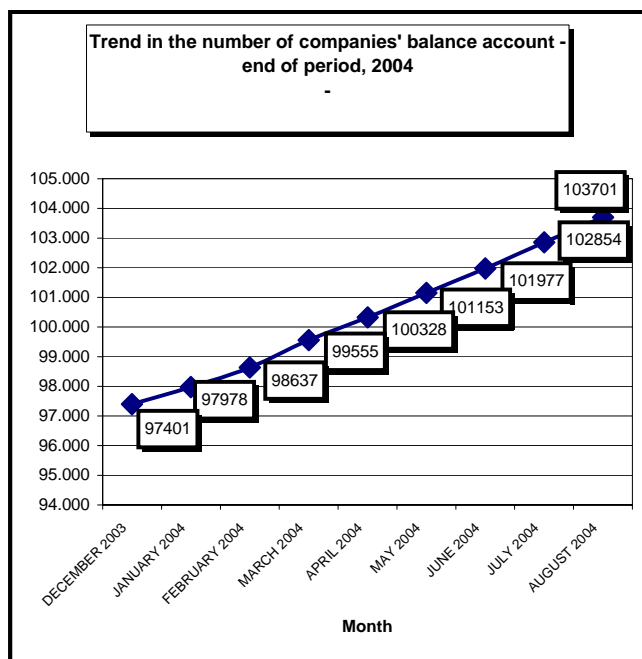


Diagram no. 6

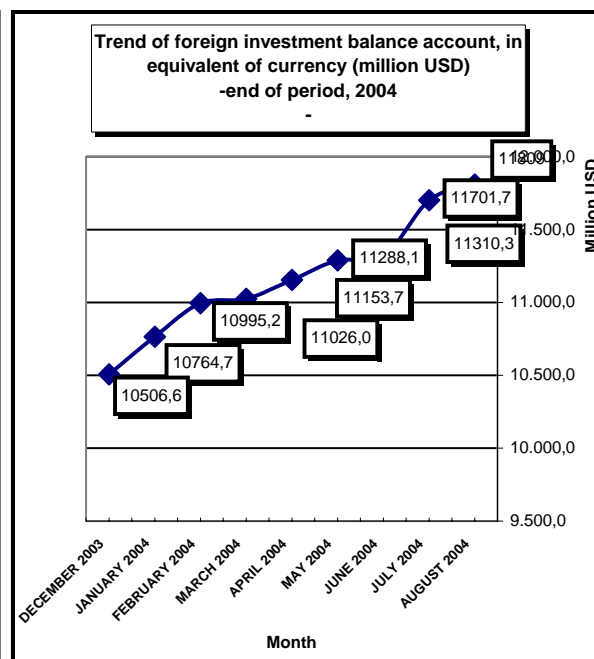


Table no. 4

**Comparative data on new companies by foreign direct investment and the subscribed capital,  
between January - August 2003 and 2004**

Month	2003				2004					
	New companies		Subscribed capital, in equivalent of currency		New companies		Trend related to 2003 (5/1)	Subscribed capital, in equivalent of currency		Trend related to 2003 (8/3)
	No.	%	thousand USD	%	No.	%	%	thousand USD	%	%
0	1	2	3	4	5	6	7	8	9	10
Jan-December out of which:	4469	100,0	41202,8	100,0	6300	100,0	141,0	72876,1	100,0	176,9
JANUARY	697	15,6	8984,0	21,8	577	9,2	82,8	3021,5	4,1	33,6
FEBRUARY	623	13,9	5828,0	14,1	659	10,5	105,8	11644,7	16,0	199,8
MARCH	499	11,2	3731,4	9,1	918	14,6	184,0	10503,3	14,4	281,5
31 August 2004,	443	9,9	3259,3	7,9	773	12,3	174,5	18694,5	25,7	573,6
MAY	440	9,8	9318,0	22,6	825	13,1	187,5	5727,8	7,9	61,5
JUNE	576	12,9	3797,6	9,2	824	13,1	143,1	14121,4	19,4	371,8
JULY	638	14,3	2117,2	5,1	877	13,9	137,5	5843,8	8,0	276,0
AUGUST	553	12,4	4167,2	10,1	847	13,4	153,2	3319,1	4,6	79,6

*Note: columns No. 1 and No. 5 show the number of new companies incorporated in the due period. The data on the subscribed capital include the initial capital subscribed in the related period. Columns No. 2, 4, 6 and 9 show the weight of each month in total period referred to.*

Diagram no. 7

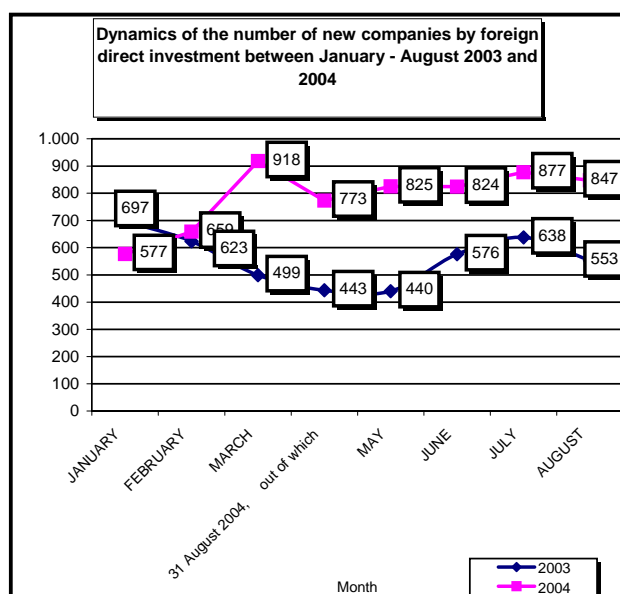


Diagram no. 8

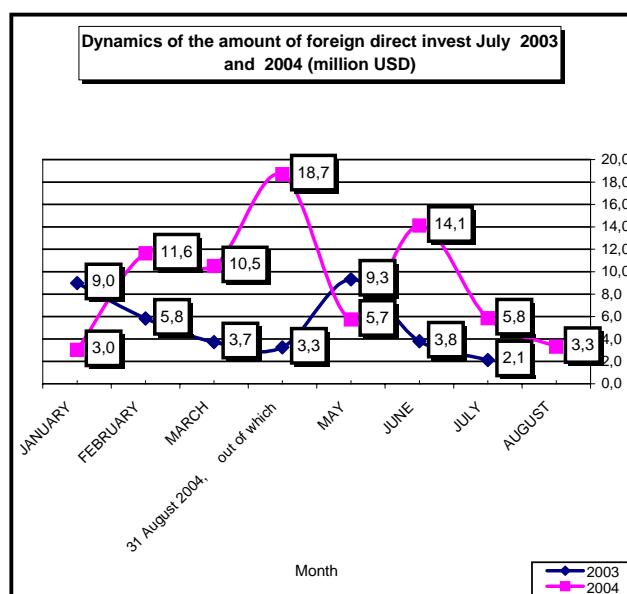


Table no. 5

**Incorporation of companies by foreign direct investment,  
during August 2004**

balance account at 30 April 2004	Number of companies		Amount of subscribed capital						Ranking by:	
			Total in local currency		Total in equivalent of currency		Total in equivalent of currency			
	No.	%	million ROL	%	USD	%	EURO	%		
0	1		2		3		4		5	
<b>Total ROMANIA</b>	<b>847</b>	<b>100,0</b>	<b>113653,3</b>	<b>100,0</b>	<b>3319100</b>	<b>100,0</b>	<b>2745869</b>	<b>100,0</b>	*	**
ALBA	18	2,13	67,0	0,06	1991	0,06	1647	0,06	13	26
ARAD	30	3,54	684,6	0,60	20445	0,62	16914	0,62	6	10
<b>31 August 2004,</b>	13	1,53	16548,8	14,56	483742	14,57	400197	14,57	17	2
<b>BACAU</b>	14	1,65	220,7	0,19	6607	0,20	5466	0,20	16	16
<b>at 31 December 2003</b>	31	3,66	145,8	0,13	4323	0,13	3576	0,13	5	19
<b>BISTRITA-NASAUD</b>	13	1,53	128,5	0,11	3860	0,12	3193	0,12	17	22
<b>BOTOSANI</b>	2	0,24	21,1	0,02	621	0,02	514	0,02	26	33
<b>BRASOV</b>	25	2,95	555,5	0,49	16574	0,50	13712	0,50	7	11
<b>BRAILA</b>	3	0,35	40,6	0,04	1206	0,04	998	0,04	25	29
<b>BUZAU</b>	5	0,59	422,3	0,37	12519	0,38	10357	0,38	23	13
<b>CARAS-SEVERIN</b>	5	0,59	283,0	0,25	8868	0,27	7336	0,27	23	15
<b>CALARASI</b>	3	0,35	32,7	0,03	978	0,03	809	0,03	25	31
<b>CLUJ</b>	56	6,61	1581,5	1,39	48542	1,46	40158	1,46	3	7
<b>CONSTANTA</b>	16	1,89	955,0	0,84	28457	0,86	23542	0,86	15	8
<b>COVASNA</b>	6	0,71	171,4	0,15	5063	0,15	4189	0,15	22	18
<b>DAMBOVITA</b>	16	1,89	766,6	0,67	22915	0,69	18957	0,69	15	9
<b>DOLJ</b>	7	0,83	20,6	0,02	590	0,02	488	0,02	21	34
<b>GALATI</b>	5	0,59	52,9	0,05	1593	0,05	1318	0,05	23	27
<b>GIURGIU</b>	3	0,35	6,8	***	206	***	170	***	25	41
<b>GORJ</b>	2	0,24	1,2	***	36	***	30	***	26	42
<b>HARGHITA</b>	19	2,24	136,7	0,12	4051	0,12	3351	0,12	12	21
<b>HUNEDOARA</b>	22	2,60	117,7	0,10	3520	0,11	2912	0,11	9	24
<b>IALOMITA</b>	1	0,12	10,0	***	292	***	242	***	27	38
<b>IASI</b>	10	1,18	355,1	0,31	10525	0,32	8707	0,32	18	14
<b>MARAMURES</b>	16	1,89	4653,3	4,09	140456	4,23	116198	4,23	15	6
<b>MEHEDINTI</b>	6	0,71	126,0	0,11	3730	0,11	3086	0,11	22	23
<b>MURES</b>	21	2,48	136,7	0,12	4114	0,12	3403	0,12	10	20
<b>NEAMT</b>	9	1,06	15,9	0,01	475	0,01	393	0,01	19	36
<b>OLT</b>	4	0,47	7,2	***	214	***	177	***	24	40
<b>PRAHOVA</b>	24	2,83	524,5	0,46	15608	0,47	12912	0,47	8	12
<b>SALAJ</b>	4	0,47	71,0	0,06	2132	0,06	1764	0,06	24	25
<b>SATU MARE</b>	20	2,36	187,2	0,16	5517	0,17	4564	0,17	11	17
<b>SIBIU</b>	32	3,78	6410,7	5,64	192154	5,79	158968	5,79	4	5
<b>SUCEAVA</b>	10	1,18	24,0	0,02	712	0,02	589	0,02	18	32
<b>TELEORMAN</b>	8	0,94	35,2	0,03	1058	0,03	875	0,03	20	30
<b>TIMIS</b>	64	7,56	11646,8	10,25	345679	10,41	285978	10,41	2	4
<b>TULCEA</b>	3	0,35	53,5	0,05	1574	0,05	1302	0,05	25	28
<b>VASLUI</b>	3	0,35	9,2	***	273	***	226	***	25	39
<b>VALCEA</b>	5	0,59	16,6	0,01	489	0,01	405	0,01	23	35
<b>VRANCEA</b>	3	0,35	11,6	0,01	347	0,01	287	0,01	25	37
<b>MUN. BUCURESTI</b>	273	32,23	54391,3	47,86	1539829	46,39	1273890	46,39	1	1
<b>ILFOV</b>	17	2,01	12006,5	10,56	377215	11,36	312067	11,36	14	3

\*) number of companies (column 1)

\*\*) capital in equivalent currency (column3)

\*\*\* Less than 0.01%

**Note: Empty rows reveal that there are no operation in the current month**

Table no. 6

**Statutory increase of the issued capital,  
in companies by foreign direct investment  
during August 2004**

balance account at 30 April 2004	Number of companies		Amount of subscribed capital						Ranking by:	
			Total in local currency		Total in equivalent of currency		Total in equivalent of currency			
	No.	%	million ROL	%	USD	%	EURO	%		
0	1		2		3		4		5	
<b>Total ROMANIA</b>	<b>665</b>	<b>100,00</b>	<b>3372935,6</b>	<b>100,00</b>	<b>162767834</b>	<b>100,00</b>	<b>134656748</b>	<b>100,00</b>	*	**
ALBA	13	1,95	154142,5	4,57	6559631	4,03	5426739	4,03	9	3
ARAD	17	2,56	197102,3	5,84	5826670	3,58	4820365	3,58	7	4
<b>31 August 2004,</b>	<b>5</b>	<b>0,75</b>	<b>719,4</b>	<b>0,02</b>	<b>22424</b>	<b>0,01</b>	<b>18551</b>	<b>0,01</b>	<b>16</b>	<b>32</b>
<b>BACAU</b>	<b>11</b>	<b>1,65</b>	<b>28375,6</b>	<b>0,84</b>	<b>836491</b>	<b>0,51</b>	<b>692023</b>	<b>0,51</b>	<b>10</b>	<b>15</b>
<b>at 31 December 2003</b>	<b>18</b>	<b>2,71</b>	<b>46348,3</b>	<b>1,37</b>	<b>1386691</b>	<b>0,85</b>	<b>1147200</b>	<b>0,85</b>	<b>6</b>	<b>12</b>
BISTRITA-NASAUD	2	0,30	3,2	***	96	***	79	***	19	36
BOTOSANI	1	0,15	1,0	***	30	***	25	***	20	39
BRASOV	21	3,16	18590,5	0,55	554510	0,34	458742	0,34	5	16
BRAILA	4	0,60	4414,6	0,13	133884	0,08	110761	0,08	17	22
BUZAU	7	1,05	9524,4	0,28	278520	0,17	230418	0,17	14	19
CARAS-SEVERIN	4	0,60	313,3	***	9379	***	7759	***	17	34
CALARASI	3	0,45	82418,0	2,44	2412636	1,48	1995958	1,48	18	8
CLUJ	26	3,91	96389,9	2,86	4108115	2,52	3398616	2,52	3	5
CONSTANTA	16	2,41	31174,5	0,92	926474	0,57	766466	0,57	8	13
COVASNA	7	1,05	19364,2	0,57	2224912	1,37	1840655	1,37	14	9
DAMBOVITA	5	0,75	4091,4	0,12	128184	0,08	106046	0,08	16	24
DOLJ	13	1,95	2309,2	0,07	96744	0,06	80036	0,06	9	27
GALATI	6	0,90	14270,6	0,42	427798	0,26	353914	0,26	15	17
GIURGIU	4	0,60	5505,7	0,16	171813	0,11	142140	0,11	17	21
GORJ	1	0,15	2,0	***	60	***	50	***	20	37
HARGHITA	10	1,50	3774,0	0,11	132515	0,08	109629	0,08	11	23
HUNEDOARA	17	2,56	9597,7	0,28	287325	0,18	237702	0,18	7	18
IALOMITA	1	0,15	152,7	***	4673	***	3866	***	20	35
IASI	11	1,65	990,0	0,03	30313	0,02	25078	0,02	10	31
MARAMURES	8	1,20	12,9	***	-4145	0,00	-3429	0,00	13	41
MEHEDINTI	7	1,05	6409,4	0,19	190040	0,12	157219	0,12	14	20
MURES	11	1,65	79083,3	2,34	2839490	1,74	2349091	1,74	10	7
NEAMT	8	1,20	4097,9	0,12	120025	0,07	99296	0,07	13	26
OLT	1	0,15	2469,5	0,07	72926	0,04	60331	0,04	20	28
PRAHOVA	23	3,46	66821,0	1,98	2153215	1,32	1781340	1,32	4	10
SALAJ	3	0,45	3936,2	0,12	126294	0,08	104482	0,08	18	25
SATU MARE	9	1,35	235336,1	6,98	9137425	5,61	7559331	5,61	12	2
SIBIU	17	2,56	40852,3	1,21	851041	0,52	704061	0,52	7	14
SUCEAVA	7	1,05	470,8	0,01	16852	0,01	13942	0,01	14	33
TELEORMAN	1	0,15	4500,0	0,13					20	40
TIMIS	37	5,56	66806,1	1,98	1997644	1,23	1652638	1,23	2	11
TULCEA	1	0,15	1,4	***	45	***	37	***	20	38
VASLUI										
VALCEA	3	0,45	1685,2	0,05	51385	0,03	42510	0,03	18	30
VRANCEA	3	0,45	2108,4	0,06	63592	0,04	52609	0,04	18	29
MUN. BUCURESTI	287	43,16	2001225,0	59,33	114655974	70,44	94854126	70,44	1	1
ILFOV	16	2,41	127545,4	3,78	3936143	2,42	3256345	2,42	8	6

\*) number of companies (column 1)

\*\*) capital in equivalent currency (column3)

\*\*\* Less than 0.01%

Note: Empty rows reveal that there are no operation in the current month

Table no. 7

**Strike-off of companies by foreign direct investment,  
from the trade register, during August 2004**

balance account at 30 April 2004	Number of companies		Amount of subscribed capital						Ranking by:	
			Total in local currency		Total in equivalent of currency		Total in equivalent of currency			
	No.	%	million ROL	%	USD	%	EURO	%		
0	1		2		3		4		5	
<b>Total ROMANIA</b>	<b>92</b>	<b>100,0</b>	<b>1483493,7</b>	<b>100,0</b>	<b>85228942</b>	<b>100,0</b>	<b>70509338</b>	<b>100,0</b>	*	**
ALBA										
ARAD	4	4,35	7834,4	0,53	240650	0,28	199088	0,28	3	5
31 August 2004,	2	2,17	17,6	***	1062	***	879	***	5	13
BACAU	2	2,17	30,2	***	1069	***	884	***	5	12
at 31 December 2003	4	4,35	622,9	0,04	24365	0,03	20157	0,03	3	8
BISTRITA-NASAUD	2	2,17	4,0	***	147	***	122	***	5	22
BOTOSANI										
BRASOV	1	1,09	30,0	***	907	***	750	***	6	16
BRAILA										
BUZAU										
CARAS-SEVERIN	2	2,17	38016,6	2,56	2561985	3,01	2119513	3,01	5	4
CALARASI										
CLUJ	6	6,52	40,4	***	2072	***	1714	***	2	11
CONSTANTA	4	4,35	26,9	***	1007	***	833	***	3	14
COVASNA										
DAMBOVITA	2	2,17	102,9	***	141659	0,17	117194	0,17	5	6
DOLJ	1	1,09	1,2	***	89	***	74	***	6	25
GALATI	1	1,09	2,0	***	230	***	190	***	6	20
GIURGIU	3	3,26	4266,4	0,29	126191	0,15	104397	0,15	4	7
GORJ										
HARGHITA										
HUNEDOARA										
IALOMITA										
IASI	1	1,09	20,7	***	628	***	520	***	6	17
MARAMURES	2	2,17	4,0	***	129	***	107	***	5	24
MEHEDINTI										
MURES	2	2,17	5,6	***	411	***	340	***	5	18
NEAMT	2	2,17	727343,3	49,03	46720309	54,82	38651401	54,82	5	1
OLT										
PRAHOVA	2	2,17	7,0	***	207	***	171	***	5	21
SALAJ										
SATU MARE	1	1,09	4,8	***	141	***	117	***	6	23
SIBIU	1	1,09	7,7	***	1000	***	827	***	6	15
SUCEAVA										
TELEORMAN										
TIMIS	3	3,26	629158,7	42,41	32044821	37,60	26510468	37,60	4	2
TULCEA										
VASLUI										
VALCEA	1	1,09	186,0	0,01	5000	***	4136	***	6	10
VRANCEA	1	1,09	10,0	***	305	***	252	***	6	19
MUN. BUCURESTI	36	39,13	75688,0	5,10	3345647	3,93	2767832	3,93	1	3
ILFOV	6	6,52	62,3	***	8911	0,01	7372	0,01	2	9

\*) number of companies (column 1)

\*\*) capital in equivalent currency (column 3)

\*\*\* Less than 0.01%

Note: Empty rows reveal that there are no operation in the current month

Table no. 8

**Changes by cession in the issued capital  
of the companies by foreign direct investment,  
during August 2004**

balance account at 30 April 2004	Number of companies		Amount of subscribed capital						Ranking by:	
			Total in local currency		Total in equivalent of currency		Total in equivalent of currency			
	No.	%	million ROL	%	USD	%	EURO	%		
0	1		2		3		4		5	
<b>Total ROMANIA</b>	<b>492</b>	<b>100,0</b>	<b>460805,4</b>	<b>100,0</b>	<b>26655372</b>	<b>100,0</b>	<b>22051812</b>	<b>100,0</b>	*	**
ALBA	8	1,6	158,4	0,03	4639	0,02	3838	0,02	11	26
ARAD	13	2,6	2936,3	0,64	117090	0,44	96868	0,44	8	12
31 August 2004,	3	0,6	1363,1	0,30	42412,0	0,16	35087,2	0,16	15	19
BACAU	8	1,6	13666,8	2,97	540508	2,03	447159	2,03	11	7
at 31 December 2003	20	4,1	273,6	0,06	31692	0,12	26219	0,12	4	20
BISTRITA-NASAUD	3	0,6	1,2	0,00	59	0,00	49	0,00	15	32
BOTOSANI										
BRASOV	13	2,6	8689,1	1,89	273445	1,03	226219	1,03	8	10
BRAILA	3	0,6	53077,2	11,52	1630945	6,12	1349270	6,12	15	3
BUZAU	7	1,4	75,1	0,02	2231	0,01	1846	0,01	12	28
CARAS-SEVERIN	3	0,6	177,2	0,04	11276	0,04	9329	0,04	15	24
CALARASI	1	0,2	0,5	0,00	15	0,00	12	0,00	17	36
CLUJ	23	4,7	1749,9	0,38	68883	0,26	56986	0,26	3	16
CONSTANTA	16	3,3	616,3	0,13	46258	0,17	38269	0,17	5	18
COVASNA	4	0,8	14094,2	3,06	2212120	8,30	1830072	8,30	14	2
DAMBOVITA	6	1,2	877,9	0,19	24420	0,09	20203	0,09	13	21
DOLJ	10	2,0	2317,1	0,50	98037	0,37	81105	0,37	10	15
GALATI	4	0,8	14870,5	3,23	837695	3,14	693020	3,14	14	5
GIURGIU	3	0,6	14,4 ***		8700	0,03	7197	0,03	15	25
GORJ	2	0,4	1,5	0,00	43	0,00	36	0,00	16	33
HARGHITA	7	1,4	10,8 ***		179030	0,67	148110	0,67	12	40
HUNEDOARA	4	0,8	9,1	0,00	319	0,00	264	0,00	14	30
IALOMITA	2	0,4	122,7	0,03	3781	0,01	3128	0,01	16	27
IASI	10	2,0	2990,2	0,65	305685	1,15	252891	1,15	10	9
MARAMURES	8	1,6	12,8	0,00	413	0,00	342	0,00	11	29
MEHEDINTI	4	0,8	3645,3	0,79	107153	0,40	88647	0,40	14	13
MURES	8	1,6	7071,6	1,53	323666	1,21	267767	1,21	11	8
NEAMT	1	0,2	1,4	0,00	40	0,00	33	0,00	17	34
OLT	1	0,2	0,2 ***		6 ***		5 ***		17	38
PRAHOVA	15	3,0	29967,0	6,50	1012742	3,80	837835	3,80	6	4
SALAJ	3	0,6	7598,2	1,65	251483	0,94	208050	0,94	15	11
SATU MARE	11	2,2	1112,4	0,24	54895	0,21	45414	0,21	9	17
SIBIU	14	2,8	3027,7	0,66	106196	0,40	87855	0,40	7	14
SUCEAVA	7	1,4	176,0	0,04	16173	0,06	13380	0,06	12	23
TELEORMAN										
TIMIS	37	7,5	1453,8	0,32	552048	2,07	456706	2,07	2	6
TULCEA	1	0,2	0,5	0,00	16	0,00	13	0,00	17	35
VASLUI	1	0,2	2,0 ***		60 ***		50 ***		17	39
VALCEA	1	0,2	641,7	0,14	20648	0,08	17082	0,08	17	22
VRANCEA	3	0,6	4,0	0,00	316	0,00	261	0,00	15	31
MUN. BUCURESTI	188	38,2	8299,4	1,80	11522483	43,23	9532474	43,23	1	1
ILFOV	16	3,3	641857,5	139,29	46704801	175,22	38638572	175,22	5	41

\*) number of companies (column 1)

\*\*) capital in equivalent currency (column 3)

\*\*\* Less than 0,01%

Note: Empty rows reveal that there are no operation in the current month

Table no. 9

**Incorporation of companies by foreign direct investment,  
according to the development regions,  
during August 2004**

Development regions	Number of companies		Amount of subscribed capital						Ranking by:	
			Total in local currency		Total in equivalent of currency		Total in equivalent of currency			
	No.	%	million ROL	%	USD	%	EURO	%		
0	1		2		3		4		5	
<b>Total ROMANIA</b>	<b>847</b>	<b>100,0</b>	<b>113653,3</b>	<b>100,0</b>	<b>3319100</b>	<b>100,0</b>	<b>2745869</b>	<b>100,0</b>	*	**
NORTH-EAST	48	5,7	646,0	0,6	19213	0,6	15895	0,6	5	7
SOUTH-EAST	35	4,1	1535,9	1,4	45696	1,4	37804	1,4	6	6
SOUTH-MUNTENIA	68	8,0	17924,6	15,8	524799	15,8	434163	15,8	4	2
31 August 2004, out	24	2,8	171,6	0,2	5059	0,2	4185	0,2	7	8
WEST	121	14,3	12732,1	11,2	378512	11,4	313140	11,4	3	3
at 31 December 2003	140	16,5	6767,3	6,0	204830	6,2	169454	6,2	2	5
CENTER	121	14,3	7477,9	6,6	223947	6,7	185270	6,7	3	4
BUCHAREST-ILFOV	290	34,2	66397,9	58,4	1917044	57,8	1585958	57,8	1	1

Table no. 10

**Statutory increase in the issued capital of companies by  
foreign direct investment, according to the development regions,  
during August 2004**

Development regions	Number of companies		Amount of subscribed capital						Ranking by:	
			Total in local currency		Total in equivalent of currency		Total in equivalent of currency			
	No.	%	million ROL	%	USD	%	EURO	%		
0	1		2		3		4		5	
<b>Total ROMANIA</b>	<b>665</b>	<b>100,0</b>	<b>3372935,6</b>	<b>100,0</b>	<b>162767834</b>	<b>100,0</b>	<b>134656748</b>	<b>100,0</b>	*	**
NORTH-EAST	38	5,7	33935,3	1,0	1003711	0,6	830363	0,6	6	7
SOUTH-EAST	37	5,6	61493,8	1,8	1830313	1,1	1514206	1,1	7	6
SOUTH-MUNTENIA	42	6,3	164208,2	4,9	4892945	3,0	4047901	3,0	5	5
SOUTH-WEST OLTENIA	25	3,8	12875,3	0,4	411155	0,3	340146	0,3	8	8
WEST	75	11,3	273819,3	8,1	8121018	5,0	6718464	5,0	3	4
NORTH-WEST	66	9,9	382026,5	11,3	14754476	9,1	12206280	9,1	4	2
CENTER	79	11,9	315806,7	9,4	13162099	8,1	10888917	8,1	2	3
BUCHAREST-ILFOV	303	45,6	2128770,4	63,1	118592117	72,9	98110471	72,9	1	1

Table no. 11

**Strike-off of companies by foreign direct investment and the amount  
of their issued capital, according to the development regions,  
during August 2004**

Development regions	Number of companies		Amount of subscribed capital						Ranking by:	
			Total in local currency		Total in equivalent of currency		Total in equivalent of currency			
	No.	%	million ROL	%	USD	%	EURO	%		
0	1		2		3		4		5	
<b>Total ROMANIA</b>	<b>92</b>	<b>100,0</b>	<b>1483493,7</b>	<b>100,0</b>	<b>100,0</b>	<b>100,0</b>	<b>70509338</b>	<b>100,0</b>	*	**
NORTH-EAST	5	5,4	727394,2	49,0	46722006	54,8	38652805	54,8	5	1
SOUTH-EAST	6	6,5	38,9	***	1542	***	1276	***	4	8
SOUTH-MUNTENIA	9	9,8	4393,9	0,3	269119	0,3	222640	0,3	3	4
SOUTH-WEST OLTENIA	2	2,2	187,2	0,0	5089	***	4210	***	7	6
WEST	9	9,8	675009,8	45,5	34847456	40,9	28829069	40,9	3	2
NORTH-WEST	15	16,3	676,2	0,0	26854	0,0	22216	0,0	2	5
CENTER	4	4,3	43,3	***	2318	***	1918	***	6	7
BUCHAREST-ILFOV	42	45,7	75750,2	5,1	3354558	3,9	2775204	3,9	1	3

\*) number of companies (column 1)

\*\*) total issued capital, in equivalent of currency (column3)

\*\*\* Less than 0.01%

Table no. 12

**Incorporation of companies by foreign direct investment, by continents  
according to the investors' country of origin,  
during August 2004**

Continent	Number of companies		Amount of subscribed capital						Ranking by:	
			Total in local currency		Total in equivalent of currency		Total in equivalent of currency			
	No.	%	million ROL	%	USD	%	EURO	%		
0	1		2		3		4		5	
<b>Total ROMANIA</b>	<b>847</b>	<b>100,0</b>	<b>113653,3</b>	<b>100,0</b>	<b>3319100</b>	<b>100,0</b>	<b>2714306</b>	<b>100,0</b>	*	**
EUROPE	753	88,9	106537,2	93,7	3090034	93,1	2556365	94,2	1	1
AFRICA	8	0,9	2069,6	1,8	60880	1,8	50366	1,9	4	3
NORTH AMERICA	30	3,5	273,4	0,2	8057	0,2	6666	0,2	3	5
31 August 2004,	6	0,7	599,4	0,5	18061	0,5	14942	0,6	5	4
ASIA	72	8,5	4115,2	3,6	140307	4,2	116075	4,3	2	2
at 31 December 2003	4	0,5	58,5	0,1	1761	0,1	1457	0,1	6	6

Table no. 13

**Increase in the issued capital of companies by foreign direct investment,  
by continents according to the investors' country of origin,  
during August 2004**

Continent	Number of companies		Amount of subscribed capital						Ranking by:	
			Total in local currency		Total in equivalent of currency		Total in equivalent of currency			
	No.	%	million ROL	%	USD	%	EURO	%		
0	1		2		3		4		5	
<b>Total ROMANIA</b>	<b>665</b>	<b>100,0</b>	<b>3372935,6</b>	<b>100,0</b>	<b>162767834</b>	<b>100,0</b>	<b>133108908</b>	<b>100,0</b>	*	**
EUROPE	495	74,4	3028315,5	89,8	152524630	93,7	126182614	94,8	1	1
AFRICA	5	0,8	507,2	0,0	15227	***	12597	***	4	4
NORTH AMERICA	47	7,1	124869,0	3,7	3712388	2,3	3071234	2,3	3	3
SOUTH AMERICA	3	0,5	3,4	***	162	***	134	***	5	6
ASIA	133	20,0	219228,0	6,5	6515055	4,0	5389862	4,0	2	2
OCEANIA	2	0,3	12,5	***	372	***	308	***	6	5

Table no. 14

**Strike-off of companies by foreign direct investment and their issued capital,  
by continents according to the investors' country of origin,  
during August 2004**

Continent	Number of companies		Amount of subscribed capital						Ranking by:	
			Total in local currency		Total in equivalent of currency		Total in equivalent of currency			
	No.	%	million ROL	%	USD	%	EURO	%		
0	1		2		3		4		5	
<b>Total ROMANIA</b>	<b>92</b>	<b>100,0</b>	<b>1483493,7</b>	<b>100,0</b>	<b>85228942</b>	<b>100,0</b>	<b>69698854</b>	<b>100,0</b>	*	**
EUROPE	72	78,3	1438646,6	97,0		96,6	68138248	97,8	1	1
NORTH AMERICA	8	8,7	38036,3	2,6	2626581	3,1	2172953	3,1	3	2
SOUTH AMERICA	1	1,1	5,4	***	163	***	135	***	5	5
ASIA	12	13,0	6626,0	0,4	216152	0,3	178821	0,3	2	3

\*) number of companies (column 1)

\*\*) total issued capital, in equivalent of currency (column3)

\*\*\* Sub 0,01%

Note: Empty rows reveal that there are no operation in the current month

Table no. 15

**Incorporation of companies by foreign direct investment, by economical groups  
of countries according to the investors' country of origin,  
during August 2004**

balance account at 30 April 2004

Economical groups	Number of companies		Amount of subscribed capital						Ranking by:					
			Total in local currency		Total in equivalent of currency		Total in equivalent of currency							
	No.	%	million ROL	%	USD	%	EURO	%	0	1	2	3	4	5
<b>Total ROMANIA</b>	<b>847</b>		<b>113653,3</b>		<b>3319100</b>		<b>2745869</b>		*	**				
E.U.	552	65,2	85312,9	75,1	2450144	73,8	2026988	73,8	2	2				
31 August 2004,	12	1,4	376,8	0,3	11404	0,3	9434	0,3	4	4				
O.E.C.D.	720	85,0	102493,1	90,2	2966380	89,4	2454066	89,4	1	1				
at 31 December 2003	91	10,7	3932,6	3,5	116800	3,5	96628	3,5	3	3				

Table no. 16

**Increase in the issued capital of companies by foreign direct investment,  
by economical groups of countries according to the investors' country of origin,  
during August 2004**

Economical groups	Number of companies		Amount of subscribed capital						Ranking by:					
			Total in local currency		Total in equivalent of currency		Total in equivalent of currency							
	No.	%	million ROL	%	USD	%	EURO	%	0	1	2	3	4	5
<b>Total ROMANIA</b>	<b>665</b>		<b>3372935,6</b>		<b>162767834</b>		<b>134656748</b>		*	**				
E.U.	335	50,4	2115040,6	62,7	67964295	41,8	56226410	41,8	2	3				
E.A.F.T.A.	8	1,2	2778,4	0,1	98845	0,1	81774	0,1	4	4				
O.E.C.D.	498	74,9	2892827,6	85,8	146481993	90,0	121183580	90,0	1	1				
C.E.F.T.A.	46	6,9	489985,0	14,5	69883670	42,9	57814296	42,9	3	2				

Table no. 17

**Strike-off of companies by foreign direct investment and their issued capital,  
by economical groups of countries according to the investors' country of origin,  
during August 2004**

Economical groups	Number of companies		Amount of subscribed capital						Ranking by:					
			Total in local currency		Total in equivalent of currency		Total in equivalent of currency							
	No.	%	million ROL	%	USD	%	EURO	%	0	1	2	3	4	5
<b>Total ROMANIA</b>	<b>92</b>		<b>1483493,7</b>		<b>85228942</b>		<b>70509338</b>		*	**				
E.U.	46	50,0	1429725,4	96,4	81603697	95,7	67510197	95,7	2	2				
E.A.F.T.A.	4	4,3	2456,4	0,2	371242	0,4	307126	0,4	4	3				
O.E.C.D.	74	80,4	1476505,0	99,5	85001722	99,7	70321360	99,7	1	1				
C.E.F.T.A.	11	12,0	2290,2	0,2	263562	0,3	218043	0,3	3	4				

\*) number of companies (column 1)

\*\*) total issued capital, in equivalent of currency (column3)

\*\*\* Less than 0.01%

Note: Each economic group's weight is calculated related to the total Romania.

The weights' sum is different from 100% due to the fact that one country might be part of more than one economical group.

Table no. 18

**Classification\* by countries of origin of investors  
in companies by foreign direct investment,  
incorporated during August 2004**

No. crt.	Countries	Number of companies		Amount of subscribed capital					
				Total in local currency		Total in equivalent of currency		Total in equivalent of currency	
		No.	%	million ROL	%	USD	%	EURO	%
0	1	2		3		4		5	
	<b>Total ROMANIA, out of which:</b>	<b>847</b>	<b>100,0</b>	<b>113653,3</b>	<b>100,0</b>	<b>3319100</b>	<b>100,0</b>	<b>2745869</b>	<b>100,0</b>
1	FRANCE	47	5,5	25259,4	22,23	724538	21,83	599405	21,83
2	ITALY	212	25,0	17347,0	15,26	507844	15,30	420136	15,30
3	GREECE	40	4,7	17827,3	15,69	472862	14,25	391196	14,25
31	TURKEY	41	4,8	15030,2	13,22	452263	13,63	374154	13,63
5	GERMANY	123	14,5	8113,3	7,14	242387	7,30	200525	7,30
6	AUSTRIA	29	3,4	5515,8	4,85	163667	4,93	135401	4,93
7	BELGIUM	15	1,8	4547,3	4,00	137353	4,14	113631	4,14
8	LUXEMBOURG	3	0,4	4098,2	3,61	124242	3,74	102785	3,74
9	CHINA	9	1,1	3085,9	2,72	90972	2,74	75261	2,74
10	BULGARIA	6	0,7	2447,4	2,15	72725	2,19	60165	2,19
11	EGYPT	5	0,6	2061,6	1,81	60640	1,83	50167	1,83
12	CYPRUS	17	2,0	1766,4	1,55	55905	1,68	46250	1,68
13	HUNGARY	75	8,9	1364,1	1,20	40461	1,22	33473	1,22
14	NETHERLAND	25	3,0	1199,2	1,06	35616	1,07	29465	1,07
15	GREAT BRITAIN	23	2,7	912,6	0,80	27030	0,81	22362	0,81
16	ISRAEL	27	3,2	221,2	0,19	24879	0,75	20582	0,75
17	A.R. OF SYRIA	8	0,9	472,2	0,42	14462	0,44	11964	0,44
18	NICARAGUA	1	0,1	406,0	0,36	12225	0,37	10114	0,37
19	SWITZERLAND	10	1,2	372,8	0,33	11284	0,34	9335	0,34
20	SPAIN	15	1,8	341,5	0,30	10069	0,30	8330	0,30
21	U.S.A.	22	2,6	245,1	0,22	7212	0,22	5966	0,22
22	I.VIRGINE BRIT.	1	0,1	165,4	0,15	5000	0,15	4136	0,15
23	MOLDAVIA	31	3,7	103,3	0,09	3073	0,09	2542	0,09
24	JORDAN	3	0,4	104,0	0,09	3044	0,09	2518	0,09
25	INDIA	2	0,2	100,2	0,09	3018	0,09	2497	0,09
26	PORTUGAL	5	0,6	84,2	0,07	2524	0,08	2088	0,08
27	AUSTRALIA	4	0,5	58,5	0,05	1761	0,05	1457	0,05
28	CZECH REPUBLIC	2	0,2	51,2	0,05	1519	0,05	1257	0,05
29	LEBANON	7	0,8	43,0	0,04	1292	0,04	1069	0,04
30	IRAN	5	0,6	40,5	0,04	1205	0,04	997	0,04
31	SLOVENIA	3	0,4	35,4	0,03	1070	0,03	885	0,03
32	IRELAND	5	0,6	28,7	0,03	861	0,03	712	0,03
33	CANADA	8	0,9	28,3	0,02	845	0,03	699	0,03
34	SAUDI ARABIA	1	0,1	26,8	0,02	802	0,02	663	0,02
35	SWEDEN	6	0,7	25,3	0,02	761	0,02	630	0,02
36	POLAND	3	0,4	24,0	0,02	711	0,02	588	0,02
37	DOMINICAN REPUBLIC	1	0,1	20,0	0,02	600	0,02	496	0,02
38	DENMARK	4	0,5	13,0	0,01	390	0,01	323	0,01
39	IRAQ	4	0,5	11,4	0,01	335	0,01	277	0,01
40	SLOVAKIA	2	0,2	10,5	***	314	***	260	***
41	BAHAMAS	1	0,1	5,0	***	151	***	125	***
42	COLOMBIA	1	0,1	5,0	***	146	***	121	***
43	NORWAY	2	0,2	4,0	***	120	***	99	***
44	SAN MARINO	1	0,1	3,6	***	106	***	88	***
45	QUATAR	2	0,2	3,2	***	95	***	79	***
46	UKRAINE	2	0,2	3,0	***	89	***	74	***
47	RUSSIA	1	0,1	2,4	***	72	***	60	***
48	ARGENTINA	1	0,1	2,0	***	60	***	50	***
49	JAPAN	1	0,1	2,0	***	60	***	50	***
50	UNITED ARAB EMIRATES	1	0,1	2,0	***	60	***	50	***

Table no. 19

**Classification\* by investors' countries of origin according to the amount  
of the increase in the issued capital, during August 2004**

No. crt.	Countries	Number of companies		Amount of subscribed capital					
				Total in local currency		Total in equivalent of currency		Total in equivalent of currency	
		No.	%	million ROL	%	USD	%	EURO	%
0	1	2		3		4		5	
	<b>Total ROMANIA</b>	<b>665</b>	<b>100,0</b>	<b>3372935,6</b>	<b>100,0</b>	<b>162767834</b>	<b>100,0</b>	<b>134656748</b>	<b>100,0</b>
1	HUNGARY	37	5,56	488734,8	14,49	69745482	42,85	57699974	42,85
2	NETHERLAND	18	2,71	1094170,8	32,44	33419607	20,53	27647819	20,53
3	ITALY	151	22,71	310168,2	9,20	10890375	6,69	9009535	6,69
31	GERMANY	53	7,97	165128,9	4,90	7166677	4,40	5928944	4,40
5	CYPRUS	19	2,86	218489,9	6,48	6791546	4,17	5618601	4,17
6	SPAIN	16	2,41	165209,5	4,90	4887295	3,00	4043227	3,00
7	TURKEY	64	9,62	146104,0	4,33	4781423	2,94	3955639	2,94
8	U.S.A.	37	5,56	118094,0	3,50	3511279	2,16	2904858	2,16
9	GREAT BRITAIN	15	2,26	110218,3	3,27	3329675	2,05	2754618	2,05
10	A.R. OF SYRIA	13	1,95	101523,7	3,01	2976639	1,83	2462554	1,83
11	MALTA	1	0,15	51992,2	1,54	2879812	1,77	2382449	1,77
12	LUXEMBOURG	8	1,20	81799,6	2,43	2767438	1,70	2289483	1,70
13	CHINA	55	8,27	74843,4	2,22	2225575	1,37	1841203	1,37
14	BELGIUM	9	1,35	61634,7	1,83	1825381	1,12	1510126	1,12
15	AUSTRIA	25	3,76	56920,7	1,69	1187960	0,73	982791	0,73
16	FRANCE	12	1,80	22705,3	0,67	1172060	0,72	969637	0,72
17	GREECE	19	2,86	41882,8	1,24	1164088	0,72	963042	0,72
18	LEBANON	20	3,01	22387,7	0,66	680740	0,42	563172	0,42
19	PALESTINA	1	0,15	1484,5	0,04	432043	0,27	357426	0,27
20	CANADA	10	1,50	6775,0	0,20	201109	0,12	166376	0,12
21	POLAND	2	0,30	1238,9	0,04	137818	0,08	114016	0,08
22	SWEDEN	7	1,05	4311,7	0,13	127074	0,08	105127	0,08
23	VIETNAM	1	0,15	4049,2	0,12	121964	0,07	100900	0,07
24	SERBIA AND MONTENEGRO	2	0,30	3641,3	0,11	107034	0,07	88549	0,07
25	SWITZERLAND	7	1,05	1578,4	0,05	63024	0,04	52139	0,04
26	SOUTH KOREA	1	0,15	14046,9	0,42	41292	0,03	34161	0,03
27	NORWAY	1	0,15	1200,0	0,04	35821	0,02	29634	0,02
28	PORTUGAL	2	0,30	890,1	0,03	26665	0,02	22060	0,02
29	IRAN	11	1,65	567,6	0,02	20475	0,01	16939	0,01
30	EGYPT	2	0,30	500,0	0,01	15011	***	12419	***
31	RUSSIA	1	0,15	34,2	***	10909	***	9025	***
32	IRAQ	8	1,20	86,2	***	9203	***	7614	***
33	MOLDAVIA	15	2,26	228,6	***	6919	***	5724	***
34	PAKISTAN	1	0,15	150,0	***	4516	***	3736	***
35	ISRAEL	18	2,71	83,9	***	2443	***	2021	***
36	AUSTRALIA	2	0,30	12,5	***	372	***	308	***
37	BULGARIA	5	0,75	5,3	***	192	***	159	***
38	SOMALIA	1	0,15	6,0	***	180	***	149	***
39	SLOVAKIA	1	0,15	5,0	***	149	***	123	***
40	UKRAINE	2	0,30	3,9	***	117	***	97	***
41	I.VIRGINE BRIT.	1	0,15	1,4	***	100	***	83	***
42	JAPAN	2	0,30	2,6	***	78	***	65	***
43	THAILANDA	1	0,15	2,0	***	60	***	50	***
44	FORMER YUGOSLAVIE	1	0,15	2,0	***	60	***	50	***
45	I.TURKS AND CAICOS	1	0,15	1,9	***	59	***	49	***
46	SOUTH AFRICA	1	0,15	1,0	***	30	***	25	***
47	SLOVENIA	1	0,15	1,0	***	29	***	24	***
48	JORDAN	1	0,15	0,3	***	27	***	22	***
49	KENYA	1	0,15	0,2	***	6	***	5	***
50	BOLIVIA	1	0,15	0,1	***	3	***	2	***

\*) on countries selected upon the amount of the foreign direct investment, in equivalent of currency, ranking by a descending scale (col 4)

\*\*\* Less than 0,01%

Table no. 20

**Classification of the top 40 companies by foreign direct investment  
in the total subscribed capital, in equivalent of currency,  
during August 2004**

No. crt.	Companies	County	Country of origin of the majority investor	Amount of subscribed capital		
				Total in local currency	Total in equivalent of currency	Total in equivalent of currency
				million ROL	thousand USD	thousand EURO
0	1	2	3	4	5	6
1	BANCA COMERCIALA ROBANK SA	BUCURESTI	HUNGARY	425904,0	66122,4	54702,6
2	ROMANIA HYPERMARCHÉ SA	BUCURESTI	NETHERLAND	823120,0	24200,0	20020,5
3	FRIESLAND ROMANIA SA	SATU MARE	NETHERLAND	202700,1	5939,4	4913,6
4	SITINDUSTRIE ROMANIA SA	ALBA	ITALY	99999,9	4940,5	4087,2
5	ALCOA ROMANIA SRL	ARAD	SPAIN	163420,0	4833,3	3998,6
6	POLITEX SA	SATU MARE	GERMANY	31761,4	3170,1	2622,6
31	BANEASA SA	ILFOV	A.R. OF SYRIA	94840,3	2772,9	2294,0
8	TIRIAC LEASING SA	BUCURESTI	CYPRUS	85394,5	2565,0	2122,0
9	CATALYST SEMICONDUCTOR ROMANIA SRL	BUCURESTI	U.S.A.	85260,0	2500,0	2068,2
10	FONEAST SRL	CALARASI	ITALY	82400,0	2412,1	1995,5
11	CEFIN LOGISTIC PARK BETA SRL	BUCURESTI	LUXEMBOURG	68868,0	2074,5	1716,2
12	ZAHARUL SA	MURES	GREAT BRITAIN	60642,0	1835,7	1518,7
13	CITYMALL INVESTITII SRL	BUCURESTI	CYPRUS	50704,0	1495,6	1237,3
14	POLUS TRANSILVANIA COMPANIE DE INVESTITII SRL	CLUJ	GREAT BRITAIN	43029,0	1300,5	1075,9
15	REMATINVEST SRL	CLUJ	GERMANY	40915,0	1238,5	1024,6
16	BUTAN GAS INTERNATIONAL SRL	TIMIS	ITALY	41088,0	1219,0	1008,5
17	GREGORY'S ROMANIA SA	BUCURESTI	CYPRUS	33389,0	1000,0	827,3
18	SAHPROD METEOR SRL	PRAHOVA	TURKEY	31000,0	953,8	789,1
19	CASCADE EMPIRE SRL	ALBA	AUSTRIA	31412,9	940,5	778,0
20	LAGUNA LIGHT INDUSTRIES SRL	ARAD	ITALY	31056,6	910,6	753,4
21	CONGAZ SA	CONSTANTA	GERMANY	28590,5	842,6	697,1
22	GERRY WEBER SUPPORT SRL	BUCURESTI	GERMANY	24599,4	759,9	628,7
23	LUXTABAC SRL	BIHOR	HUNGARY	24801,9	747,8	618,6
24	AROMA RISE SA	BACAU	CYPRUS	21702,3	634,5	524,9
25	MENLEY INTERNATIONAL SRL	BUCURESTI	GREECE	18361,4	595,4	492,6
26	CONTI IMPEX SRL	ALBA	TURKEY	20000,0	595,2	492,4
27	BANCA COMERCIALA CARPATICA SA	SIBIU	GERMANY	18720,2	557,9	461,6
28	3D ROMANIA SA	BUCURESTI	FRANCE	17196,8	518,5	428,9
29	ROMANIA THERMAL INSULATIONS SRL	ILFOV	ITALY	15890,0	487,5	403,3
30	RENAULT INDUSTRIE ROUMANIE SRL	ARGES	FRANCE	16449,6	480,8	397,8
31	SALAH IMPEX SRL	MURES	PALESTINA	1450,0	422,0	349,2
32	NIM-PROMO SA	BUCURESTI	LUXEMBOURG	546,0	324,4	268,4
33	REDRA CONSTRUCT GRUP SA	BUCURESTI	GREECE	12000,0	300,0	248,2
34	MEGAPROFIL SRL	TIMIS	BELGIUM	9676,7	293,7	242,9
35	CENTRUL DE SANATATE PRO LIFE SRL	BUCURESTI	TURKEY	9639,2	289,4	239,4
36	ECEBBA SRL	HUNEDOARA	TURKEY	9384,0	281,1	232,5
37	SINOROMA INDUSTRY COM SRL	BUZAU	CHINA	9430,3	275,7	228,1
38	CEFIN LOGISTIC PARK ALFA SRL	BUCURESTI	LUXEMBOURG	9098,0	274,1	226,7
39	ADVANTAGE SOFTWARE FACTORY SRL	BUCURESTI	CYPRUS	8864,7	268,6	222,2
40	GIL INVESTITII IMOBILIARE SRL	BUCURESTI	NETHERLAND	7999,4	259,5	214,7

Table no. 21

**Number of registered companies with foreign investment capital  
and amount of subscribed capital,  
between 1991 and 2003**

balance account at 30 April 2004	Number of companies		Amount of subscribed capital					
			Total on ROL		Total on currency		Total on currency	
	No.	%	millions ROL	%	thousands USD	%	thousands EURO	%
0	1		2		3		4	
<b>1991 - 2003, out of which:</b>	<b>97401</b>	<b>100,0</b>	<b>180249550,3</b>	<b>100,0</b>	<b>10506605,1</b>	<b>100,0</b>	<b>8692044,6</b>	<b>100,0</b>
<b>1991</b>	5491	5,6	1278466,6	0,7	880393,8	8,4	728344,0	8,4
<b>1992</b>	11798	12,1	586269,3	0,3	540044,6	5,1	446775,3	5,1
<b>1993</b>	10607	10,9	895150,9	0,5	414255,6	3,9	342710,9	3,9
<b>1994</b>	11080	11,4	2344033,5	1,3	908759,1	8,6	751810,4	8,6
<b>1995</b>	3396	3,5	731514,1	0,4	283229,1	2,7	234313,6	2,7
<b>1996</b>	3627	3,7	2278344,2	1,3	575241,2	5,5	475893,2	5,5
<b>1997</b>	5261	5,4	2416970,7	1,3	374634,3	3,6	309932,4	3,6
<b>1998</b>	8844	9,1	7426755,9	4,1	738018,8	7,0	610558,1	7,0
<b>1999</b>	7416	7,6	12337646,1	6,8	954133,8	9,1	789348,6	9,1
<b>2000</b>	8593	8,8	18382310,7	10,2	829549,3	7,9	686280,6	7,9
<b>2001</b>	7175	7,4	50516275,0	28,0	1612385,4	15,3	1333915,8	15,3
<b>2002</b>	7511	7,7	35659068,8	19,8	1082190,5	10,3	895289,0	10,3
<b>2003</b>	6602	6,8	45396744,5	25,2	1313769,5	12,5	1086872,7	12,5

*Note: column no. 1 representing number of new registered from that time. The amount of subscribed capital is composed by initial subscribed capital added with any increase of capital and decreased with the subscribed capital of erased companies*

Diagram no. 9

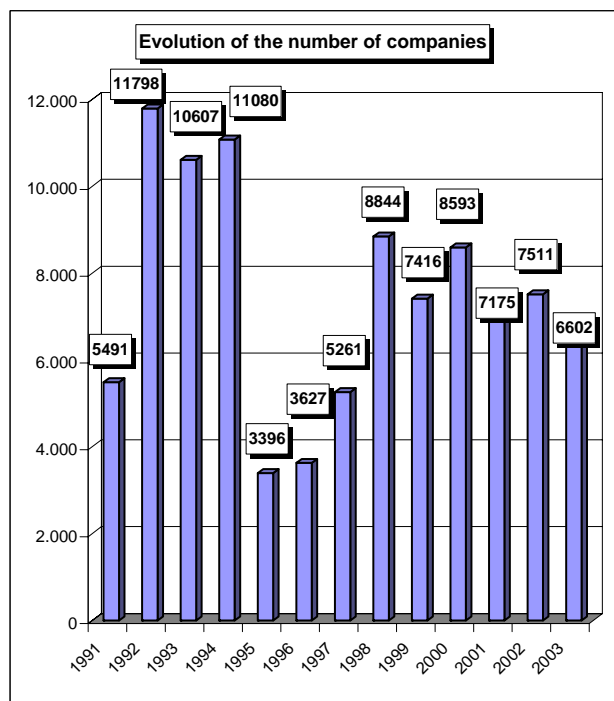


Diagram no. 10

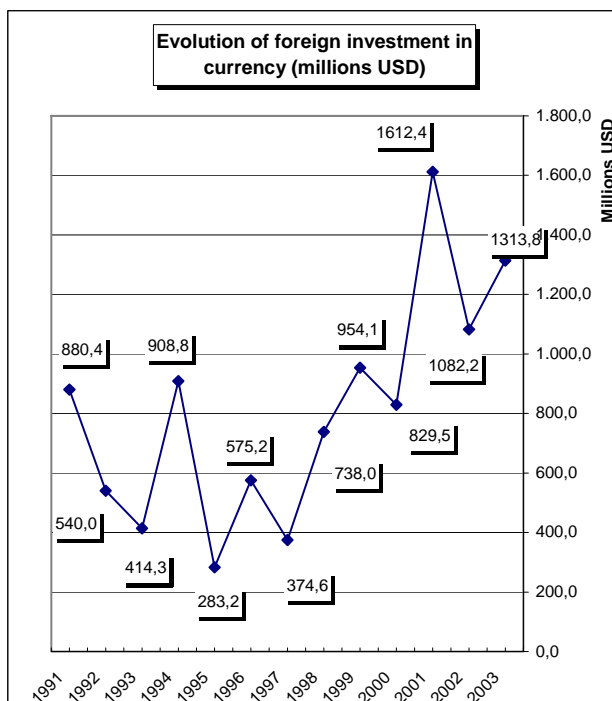


Table no. 22

**Number of registered companies, with foreign capital investment  
and the value of the invested capital,  
between 1991 and 2003**

balance account at 30 April 2004	Number of companies		Amount of subscribed capital						Order by:	
			Total on ROL		Total on currency		Total on currency			
	No.	%	millions ROL	%	thousands USD	%	thousands EURO	%		
0	1		2		3		4		5	
<b>Total ROMANIA</b>	<b>97401</b>	<b>100,0</b>	<b>180249550,3</b>	<b>100,0</b>	<b>10506605,1</b>	<b>100,0</b>	<b>8692044,6</b>	<b>100,0</b>	*	**
ALBA	848	0,9	1100207,5	0,6	88300,3	0,8	73050,2	0,8	18	19
ARAD	2569	2,6	2097217,0	1,2	142034,4	1,4	117504,1	1,4	5	13
<b>31 August 2004,</b>	<b>825</b>	<b>0,8</b>	<b>17747575,7</b>	<b>9,8</b>	<b>616058,8</b>	<b>5,9</b>	<b>509661,4</b>	<b>5,9</b>	<b>19</b>	<b>3</b>
BACAU	731	0,8	5959523,1	3,3	184609,9	1,8	152726,5	1,8	22	11
BIHOR	2494	2,6	4322036,7	2,4	194023,5	1,8	160514,3	1,8	6	10
BISTRITA-NASAUD	597	0,6	210449,6	0,1	13782,5	0,1	11402,2	0,1	25	37
BOTOSANI	247	0,3	121430,4	0,1	6191,2	0,1	5121,9	0,1	37	41
BRASOV	2423	2,5	1790898,2	1,0	121716,3	1,2	100695,1	1,2	7	14
BRAILA	400	0,4	468050,3	0,3	32169,3	0,3	26613,5	0,3	29	31
BUZAU	454	0,5	633286,1	0,4	27686,6	0,3	22904,9	0,3	28	33
CARAS-SEVERIN	673	0,7	337508,5	0,2	47888,9	0,5	39618,1	0,5	23	26
CALARASI	259	0,3	1249158,7	0,7	44875,7	0,4	37125,4	0,4	36	28
CLUJ	4006	4,1	4885297,0	2,7	272163,9	2,6	225159,4	2,6	3	8
CONSTANTA	3411	3,5	13061014,8	7,2	494256,7	4,7	408895,3	4,7	4	5
COVASNA	521	0,5	378719,1	0,2	43877,0	0,4	36299,2	0,4	26	29
DAMBOVITA	467	0,5	4256053,7	2,4	153647,3	1,5	127111,4	1,5	27	12
DOLJ	1109	1,1	804582,5	0,4	194084,0	1,8	160564,4	1,8	15	9
GALATI	754	0,8	19808517,6	11,0	654186,7	6,2	541204,3	6,2	21	2
GIURGIU	268	0,3	266684,4	0,1	12245,7	0,1	10130,8	0,1	35	39
GORJ	238	0,2	22934,1	0,0	1907,8	0,0	1578,3	0,0	39	42
HARGHITA	1229	1,3	732824,2	0,4	47637,5	0,5	39410,2	0,5	13	27
HUNEDOARA	922	0,9	866631,5	0,5	68163,1	0,6	56390,9	0,6	17	22
IALOMITA	205	0,2	117230,6	0,1	11098,1	0,1	9181,4	0,1	40	40
IASI	1292	1,3	718560,1	0,4	75066,7	0,7	62102,2	0,7	12	20
MARAMURES	1220	1,3	2221420,0	1,2	91168,4	0,9	75423,0	0,9	14	18
MEHEDINTI	353	0,4	743159,3	0,4	28556,7	0,3	23624,8	0,3	31	32
MURES	1766	1,8	2576935,8	1,4	121681,3	1,2	100666,1	1,2	10	15
NEAMT	604	0,6	1840689,6	1,0	120687,0	1,1	99843,5	1,1	24	16
OLT	299	0,3	1982970,4	1,1	70278,9	0,7	58141,3	0,7	34	21
PRAHOVA	1549	1,6	5802938,0	3,2	387607,5	3,7	320665,1	3,7	11	7
SALAJ	322	0,3	305884,0	0,2	17249,2	0,2	14270,2	0,2	33	36
SATU MARE	979	1,0	1022071,9	0,6	66621,4	0,6	55115,4	0,6	16	23
SIBIU	1806	1,9	936514,9	0,5	94885,5	0,9	78498,2	0,9	9	17
SUCEAVA	811	0,8	780709,9	0,4	49076,4	0,5	40600,6	0,5	20	25
TELEORMAN	186	0,2	902030,2	0,5	42391,5	0,4	35070,2	0,4	41	30
TIMIS	5953	6,1	7044873,0	3,9	493379,7	4,7	408169,7	4,7	2	6
TULCEA	243	0,2	221124,6	0,1	12859,0	0,1	10638,2	0,1		38
VASLUI	183	0,2	532839,7	0,3	23169,1	0,2	19167,6	0,2	42	35
VALCEA	373	0,4	460943,9	0,3	50727,3	0,5	41966,3	0,5	30	24
VRANCEA	323	0,3	143581,0	0,1	27027,3	0,3	22359,5	0,3	32	34
MUN. BUCURESTI	51098	52,5	62980551,5	34,9	4677081,9	44,5	3869318,8	44,5	1	1
ILFOV	2391	2,5	7793921,1	4,3	584485,1	5,6	483540,6	5,6	8	4

\*) number of companies

\*\*) capital in equivalent currency

Table no. 23

**Number of registered companies, with foreign capital investment  
and the value of the invested capital, on economic development areas,  
between 1991 and 2003**

Economic development areas	Number of companies		Amount of subscribed capital						Order by:	
			Total on ROL		Total on currency		Total on currency			
	No.	%	millions ROL	%	thousands USD	%	thousands EURO	%		
0	1		2		3		4		5	
<b>Total ROMANIA</b>	<b>97401</b>	<b>100,0</b>	<b>180249550,3</b>	<b>100,0</b>	<b>10506605,1</b>	<b>100,0</b>	<b>8692044,6</b>	<b>100,0</b>	*	**
NORTH-EAST	3868	4,0	9953752,8	5,5	458800,3	4,4	379562,4	4,4	6	7
SOUTH-EAST	5585	5,7	34335574,5	19,0	1248185,6	11,9	1032615,7	11,9	5	3
SOUTH-MUNTENIA	3759	3,9	30341671,3	16,8	1267924,6	12,1	1048945,6	12,1	7	2
31 August 2004, out	2372	2,4	4014590,2	2,2	345554,8	3,3	285875,2	3,3	8	8
WEST	10117	10,4	10346230,0	5,7	751466,0	7,2	621682,9	7,2	2	4
at 31 December 2003	9618	9,9	12967159,2	7,2	655008,9	6,2	541884,5	6,2	3	5
CENTER	8593	8,8	7516099,7	4,2	518097,9	4,9	428618,9	4,9	4	6
BUCHAREST-ILFOV	53489	54,9	70774472,5	39,3	5261567,0	50,1	4352859,4	50,1	1	1

Table no. 24

**Number of registered companies, with foreign capital investment  
and the value of the invested capital, on continents  
between 1991 and 2003**

Continent	Number of companies		Amount of subscribed capital						Order by:	
			Total on ROL		Total on currency		Total on currency			
	No.	%	millions ROL	%	thousands USD	%	thousands EURO	%		
0	1		2		3		4		5	
<b>Total ROMANIA</b>	<b>97401</b>	<b>100,0</b>	<b>180249550,3</b>	<b>100,0</b>	<b>10506605,1</b>	<b>100,0</b>	<b>8692044,6</b>	<b>100,0</b>	*	**
EUROPE	60600	62,2	141851986,1	78,7	8252825,2	78,5	6827507,5	78,5	1	1
AFRICA	2161	2,2	238777,4	0,1	33383,2	0,3	27617,7	0,3	4	6
NORTH AMERICA	4704	4,8	7595097,7	4,2	771174,2	7,3	637987,3	7,3	3	2
SOUTH AMERICA	627	0,6	3549702,2	2,0	156402,4	1,5	129390,7	1,5	5	5
ASIA	32935	33,8	6895031,7	3,8	647451,0	6,2	535631,9	6,2	2	3
OCEANIA	470	0,5	20118412,2	11,2	645256,8	6,1	533816,6	6,1	6	4

Table no. 25

**Number of registered companies, with foreign capital investment  
and the value of the invested capital, on economic groups,  
between 1991 and 2003**

Economic groups	Number of companies		Amount of subscribed capital							
			Total on ROL		Total on currency		Total on currency			
	No.	%	millions ROL	%	thousands USD	%	thousands EURO	%		
0	1		2		3		4		5	
<b>Total ROMANIA</b>	<b>97401</b>		<b>180249550,3</b>		<b>10506605,1</b>		<b>8692044,6</b>		*	**
U.E.	40511	41,6	116432946,1	64,6	6452837,9	61,4	5338390,0	61,4	2	2
A.E.L.S.	1562	1,6	6734115,6	3,7	388769,2	3,7	321626,2	3,7	4	3
O.E.C.D.	60786	62,4	141418019,1	78,5	8559921,4	81,5	7081566,2	81,5	1	1
C.E.F.T.A.	5459	5,6	5449225,2	3,0	298071,9	2,8	246592,9	2,8	3	4

Note: Each economic group's weight is calculated in total Romania.

The weights sum is different from 100% because each country may be part of one or many economic groups

\*) number of companies

\*\*) capital in equivalent currency

\*\*\* Less than 0.01%

Table no. 26

**Countries classification on foreign  
investment capital registered  
between 1991 and December 2003**

No. crt.	Countries	Number of companies		Amount of subscribed capital					
				Total on ROL		Total on currency		Total on currency	
		No.	%	millions ROL	%	thousands USD	%	thousands EURO	%
0	1	2		3		4		5	
	<b>Total ROMANIA, out of which:</b>	<b>97401</b>	<b>100,00</b>	<b>180249550,3</b>	<b>100,00</b>	<b>10506605,1</b>	<b>100,00</b>	<b>8692044,6</b>	<b>100,00</b>
1	NETHERLAND	1747	1,79	34678166,9	19,24	1862219,3	17,72	1540601,7	17,72
2	FRANCE	3162	3,25	23077880,6	12,80	1067959,5	10,16	883515,8	10,16
3	GERMANY	10972	11,26	13360883,9	7,41	885738,6	8,43	732765,6	8,43
31	U.S.A.	3808	3,91	7147960,5	3,97	711922,9	6,78	588969,0	6,78
5	ITALY	14203	14,58	8168587,5	4,53	639009,8	6,08	528648,5	6,08
6	AUSTRIA	2792	2,87	13693435,8	7,60	602282,6	5,73	498264,4	5,73
7	ANTILELE OLANDEZE	9	***	19068759,7	10,58	598478,8	5,70	495117,5	5,70
8	CYPRUS	1151	1,18	7758611,7	4,30	504569,9	4,80	417427,4	4,80
9	GREAT BRITAIN	1665	1,71	8450920,9	4,69	448940,7	4,27	371405,6	4,27
10	TURKEY	8689	8,92	4196801,1	2,33	438283,6	4,17	362589,1	4,17
11	GREECE	2561	2,63	5322418,0	2,95	317249,5	3,02	262458,4	3,02
12	SWITZERLAND	1255	1,29	5827837,9	3,23	311721,2	2,97	257884,9	2,97
13	HUNGARY	4406	4,52	5048443,3	2,80	265489,3	2,53	219637,5	2,53
14	SOUTH KOREA	82	0,08	481704,4	0,27	218348,4	2,08	180638,2	2,08
15	LUXEMBOURG	219	0,22	2972457,2	1,65	194096,5	1,85	160574,7	1,85
16	SPAIN	629	0,65	956796,3	0,53	160508,8	1,53	132787,9	1,53
17	I.VIRGINE BRIT.	191	0,20	3269391,7	1,81	123487,3	1,18	102160,2	1,18
18	SWEDEN	785	0,81	2452963,9	1,36	107409,7	1,02	88859,3	1,02
19	CHINA	8223	8,44	2415294,3	1,34	105661,6	1,01	87413,2	1,01
20	WITH OUT CITIZENSHIP	21	0,02	7635,2	***	75690,3	0,72	62618,1	0,72
21	A.R. OF SYRIA	5265	5,41	565637,0	0,31	64088,5	0,61	53020,0	0,61
22	PORTUGAL	93	0,10	1844148,2	1,02	64088,3	0,61	53019,8	0,61
23	CANADA	896	0,92	447137,2	0,25	59251,3	0,56	49018,2	0,56
24	BELGIUM	1168	1,20	746314,2	0,41	58986,4	0,56	48799,0	0,56
25	LIECHTENSTEIN	151	0,16	671538,2	0,37	58848,6	0,56	48685,0	0,56
26	JAPAN	132	0,14	1372109,3	0,76	56353,6	0,54	46621,0	0,54
27	IRAQ	5784	5,94	563175,4	0,31	52302,2	0,50	43269,3	0,50
28	LEBANON	3307	3,40	527006,2	0,29	46250,5	0,44	38262,7	0,44
29	ISRAEL	2572	2,64	237638,3	0,13	28504,3	0,27	23581,4	0,27
30	MARSHALL ISLANDS	7	***	804183,8	0,45	25249,4	0,24	20888,6	0,24
31	GIBRALTAR	26	0,03	428937,3	0,24	24481,1	0,23	20253,0	0,23
32	IRELAND	199	0,20	232099,9	0,13	24068,4	0,23	19911,7	0,23
33	FORMER YUGOSLAVIE	729	0,75	89809,1	0,05	22692,4	0,22	18773,2	0,22
34	IRAN	2590	2,66	172644,3	0,10	20448,5	0,19	16916,9	0,19
35	DENMARK	262	0,27	438462,1	0,24	18310,5	0,17	15148,1	0,17
36	PANAMA	115	0,12	132734,6	0,07	17832,2	0,17	14752,5	0,17
37	MONACO	29	0,03	302808,6	0,17	15515,4	0,15	12835,8	0,15
38	JORDAN	3052	3,13	122907,4	0,07	15135,8	0,14	12521,8	0,14
39	MOLDAVIA	1594	1,64	137590,2	0,08	14682,8	0,14	12147,0	0,14
40	ICELAND	12	0,01	92321,0	0,05	12206,4	0,12	10098,3	0,12
41	KUWEIT	146	0,15	28024,4	0,02	12042,0	0,11	9962,3	0,11
42	EGYPT	1275	1,31	102151,5	0,06	10769,9	0,10	8909,9	0,10
43	BULGARIA	514	0,53	81903,2	0,05	10234,1	0,10	8466,6	0,10
44	CZECH REPUBLIC	208	0,21	77374,4	0,04	10008,3	0,10	8279,8	0,10
45	AUSTRALIA	400	0,41	36541,3	0,02	9404,9	0,09	7780,6	0,09
46	CAMEROON	11	0,01	31887,3	0,02	9045,5	0,09	7483,3	0,09
47	POLAND	221	0,23	114098,0	0,06	7989,8	0,08	6609,9	0,08
48	INS. VIRGINE AMR.	34	0,03	89609,8	0,05	7988,8	0,08	6609,1	0,08
49	CAYMAN ISLANDS	8	***	52718,3	0,03	6461,1	0,06	5345,3	0,06
50	THAILANDA	18	0,02	139498,4	0,08	6180,1	0,06	5112,8	0,06
51	NORWAY	144	0,15	142418,5	0,08	5993,0	0,06	4958,0	0,06
52	LIBERIA	34	0,03	13793,2	***	5145,0	0,05	4256,4	0,05
53	PAKISTAN	656	0,67	64218,8	0,04	4612,2	0,04	3815,7	0,04
54	BAHAMAS	25	0,03	60366,9	0,03	4295,0	0,04	3553,2	0,04

