



MINISTRY OF JUSTICE

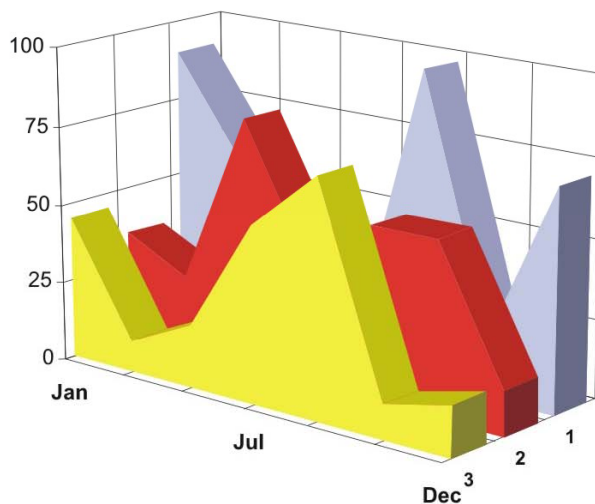
THE NATIONAL TRADE REGISTER OFFICE

București, Bd. Unirii nr. 74, Bl. J3b, tronson II+III, sector 3; Telefon: +40 21 316.08.04, 316.08.10; Fax: +40 21 316.08.03; Cod poștal: 030837  
Website: [www.onrc.ro](http://www.onrc.ro); E-mail: [onrc@onrc.ro](mailto:onrc@onrc.ro); Cod identificare Fiscală: 14942091

# COMPANIES BY FOREIGN DIRECT INVESTMENT

## STATISTICAL SYNTHESIS

### OF THE NATIONAL TRADE REGISTER'S DATA 30<sup>th</sup> APRIL 2010 - PROVISIONAL DATA



# MINISTRY OF JUSTICE THE NATIONAL TRADE REGISTER OFFICE

- Operations such as incorporation of trading companies, submission of changes, and strike-off are carried out based on Law No.26/1990, as republished, Law No.31/1990, as republished and on the Methodological Norms no. P/608/1998.
- This work reflects the evolution of the operations regarding trading companies with foreign participation in the share capital with the Trade Register Office attached to Bucharest Law Court and the Trade Register Offices attached to County Law Courts.
- The data contained in the Central Trade Register refer to operations for which law sets out the obligation of being registered in the trade registers kept by the 42 trade register offices attached to law courts.

*• The content of this publication shall not be reproduced, partly or entirely, in original or modified form, and shall not be stored in a recovery system and shall not be transmitted in any form or by any means without prior written authorization of the Ministry of Justice – The National Trade Register Office.*

*• The content of this publication shall be used in articles, studies, books, as supporting or explanatory data only by clearly and accurately indicating the source.*

# Contents

	Page
<b>1 Definitions</b>	<b>1</b>
<b>2.1 Tables and statistical charts – data related to April 2010</b>	<b>3</b>
Table no. 1 – Number of trading companies with foreign participation in the share capital and the subscribed share capital - balance on 31 April 2010	3
Chart no. 1 – Structure of the number of trading companies with foreign participation in the share capital	3
Chart no. 2 – Investment structure in equivalent currency	3
Table no. 2 – Top of companies by residence countries of investors in trading companies with foreign participation in the share capital - balance on 28 April 2010	4
Chart no. 3 – Structure by domains of activity of the number of trading companies with foreign participation in the share during April 2010	5
Chart no. 4 – Structure by domains of activity of the value of share capital subscribed by trading companies with foreign participation during April 2010	5
Table no. 3 – Number of trading companies with foreign participation in the share capital, and the value of the subscribed share capital – balance at the end of each month of 2008	6
Chart no. 5 – Evolution of the number of trading companies with foreign participation in the share capital – data at the end of the period in 2009	6
Chart no. 6 – Evolution of the investment balance expressed in equivalent currency (thousand USD) - data at the end of the period in 2009.	6
Table no. 4 – New trading companies with foreign participation in the subscribed share capital during April - April 2008 and 2009	7
Chart no. 7 – Dynamics of the number of new companies with foreign participation in the share capital during April – April 2009 and 2010	7
Chart no. 8 – Dynamics of the value of share capital subscribed in new companies during April – April of 2009 and 2010	7
Table no. 5 – Incorporation of trading companies with foreign participation in the share capital during the month of April 2010	8
Table no. 6 – Submission to increase the share capital in trading companies with foreign participation during the month of April 2010	9
Table no. 7 – Strike-off of trading companies with foreign participation in the share capital from the trade register during the month of April 2010	10
Table no. 8 – Submission for share capital assignment in trading companies with foreign participation during the month of April 2010	11
Table no. 9 – Incorporation of trading companies with foreign participation in the share capital, by regions of economic development, during the month of April 2010	12
Table no. 10 – Submission for increase of share capital of trading companies with foreign participation, by regions of economic development, during the month of April 2010	12
Table no. 11 – Strike-off of trading companies with foreign participation, by regions of economic development, during the month of April 2010	12
Table no. 12 – Incorporation of trading companies with foreign participation in the share capital, by continents, according to the investor’s residence, during the month of April 2010	13

Table no.13 – Submission to increase the share capital of trading companies with foreign participation, by continents according to the investor’s residence, during the month of April 2010	13
Table no. 14 – Strike-off of trading companies with foreign participation, by continents, according to the investor’s residence, during the month of April 2010	13
Table no. 15 – Incorporation of trading companies with foreign participation in the share capital, by economic groupings of countries, according to the investor’s residence, during the month April 2010	14
Table no. 16 – Submission for increase of the share capital of trading companies with foreign participation, by economic groupings of countries, according to the investor’s residence, during the month of April 2010	14
Table no. 17 – Strike-off of trading companies with foreign participation, by economic groupings of countries, according to the investor’s residence, during the month of April 2010	14
Table no. 18 – Top by residence countries of investors in trading companies with foreign participation in the share capital, incorporated during the month of April 2010	15
Table no. 19 – Top by residence countries of investors according to the value of the share capital registered by submission for increase of the share capital during the month of April 2010	16
Table no. 20 –Top of the first 40 trading companies by foreign participation in the total subscribed share capital, in equivalent currency, during the month of April 2010	17
<b>2.2 Data related to the period 1991 – 2009</b>	<b>18</b>
Table no. 21 – Number of trading companies with foreign participation in the share capital and the value of the subscribed share capital, during 1991 and 2008	18
Chart no. 9 – Evolution of the number of companies during 1991-2008	18
Chart no. 10 – Evolution of the investment expressed in equivalent currency during 1991-2008	18
Table no. 22 – Trading companies with foreign participation in the share capital and the value of the total subscribed share capital during 1991 – 2008 – balance on 31 December 2009	19
Table no. 23 – Trading companies with foreign participation in the share capital and the value of April December 2009	20
Table no. 24 – Trading companies with foreign participation in the share capital and the value of the total subscribed share capital, by continents, during 1991 and 2009 - balance on 31 December 2009	20
Table no. 25 – Trading companies with foreign participation in the share capital and the value of the total subscribed share capital, by economic groupings, during 1991 and 2009 - balance on December 2009	20
Chart no. 11 – Structure of domains of activity of the number of trading companies with foreign participation in the share capital registered during 1991 – 2009 - balance on 31 December 2009	21
Chart no. 12– Structure of domains of activity of the total share capital subscribed by trading companies with foreign participation in the share capital during 1991 and 2008 - balance on 31 December 2009	21
Table no. 26 – Top of the countries by foreign participation in the total subscribed share capital during 1991 and 2008 - balance on 31 December 2009	22

## Definitions

• **A trading company with foreign participation in the share capital** is such trading company partially or entirely established with the participation of natural or legal persons, with stable residence or registered office outside Romania.

• **Foreign investor** is a natural or legal person with stable residence or registered office outside Romania, having the capacity of associate/shareholder in a trading company with registered office in Romania.

• **Share capital** is the total value of the participation, in cash and in kind, subscribed by the shareholders upon incorporation of a company, and upon increase of the share capital during the trading company operation.

*Subscription* to the share capital by a foreign investor, according to the legislation in force, April be made in the national currency of Romania and/or in freely convertible currency.

*Increase of share capital* registered by submission includes:

- The foreign investors' participation out of new own resources, in cash and/or in kind, in lei and/or hard currency;
- participation from dividends obtained in Romania;
- acquisition of shares by a non-resident person from a resident one.

*Decrease/(increase by) assignment* of share capital includes the amounts representing participation in the share capital of non-resident associates/shareholders assigned to/(received from) resident associates/shareholders.

• **Foreign investment of capital in Romania** ( **Is** ) equals to the value of foreign capital subscribed upon incorporation (**I**) plus subscriptions through submissions to increase the foreign capital (**M**), plus/minus the assigned share capital by/to resident associates/shareholders (**C**), minus the share capital subscribed to companies struck-off from the trade register (**R**), i.e.:

$$Is = I + M \pm C - R$$

### Used Terms:

• **incorporation** – represents the registration of the applicant in the trade register granting the quality of legal person thereto.

• **submission** – is the registration of the changes occurred during the operation of the company, such as: change of registered office, change of share capital, merger, winding-up, dissolution, etc.

• **strike-off** – is the operation of removing a company with foreign investor from the trade register, setting out the date a company loses its quality of legal person as a result of dissolution or winding-up thereof. The data regarding strike-offs also include trading companies under the provisions of Law No. 314/2001.

• **Operations** performed in the trade register represent all the registrations including incorporations, submissions and strike-offs of trading companies with foreign participation in the share capital, irrespective of the nature of activity and type of trading company.

• **Terms used in tables and charts**

➤ **Number of trading companies:** depending on the table, it represents the number of trading companies incorporated during the reference period, the number of companies having registered increases/decreases of share capital, the number of trading companies struck-off from the trade register.

➤ **The value of the subscribed share capital:**

- **a total, expressed in national currency:** the value of the subscribed share capital resulted from adding up the values subscribed in national currency (lei) with the value in freely convertible currency exchanged in lei, at the exchange rate, notified by the National Bank of Romania, of the date of the deed of incorporation/modifier document;

- **a total, expressed in currency equivalent:**

**USD** : the value of the subscribed share capital obtained by adding up and exchanging into USD the freely convertible currency, and the national currency (lei), at the exchange rate, notified by the National Bank of Romania, of the date of the deed of incorporation/modifier document

**Euro** : the balance existing at the end of each month, calculated in equivalent USD, are exchanged into Euro at EURO/USD exchange rate, notified by the National Bank of Romania, of the last working day of the respective month.

➤ **Regions of economic development:**

<i>North-East:</i>	Suceava, Botoșani, Neamț, Iași, Bacău, Vaslui.
<i>South-East:</i>	Vrancea, Galați, Buzău, Brăila, Tulcea, Constanța.
<i>South-Muntenia:</i>	Argeș, Dâmbovița, Prahova, Teleorman, Giurgiu, Călărași, Ialomița.
<i>South-West Oltenia:</i>	Gorj, Vâlcea, Dolj, Mehedinți, Olt.
<i>West:</i>	Arad, Caraș-Severin, Hunedoara, Timiș.
<i>North-West:</i>	Bihor, Bistrița, Cluj, Satu Mare, Sălaj, Maramureș.
<i>Center:</i>	Alba, Brașov, Covasna, Harghita, Mureș, Sibiu.
<i>Bucharest-Ilfov:</i>	București, Ilfov.

Sources of Information:

The integrated IT system of the trade register is designed by The National Trade Register Office in compliance with the provisions of the related legislation in force. The source of information consists of the trade registers organized in a computerized system, kept by the trade register offices attached to law courts.

Table no. 1

**Number of companies by foreign direct investment  
and the amount of the subscribed capital,  
30 April 2010**

Balance account by end of period	Number of companies		Amount of subscribed capital					
			Total in ROL		Total in currency		Total in currency	
	No.	%	%	thousand USD	%	thousand EURO	%	
0	1	2	3	4				
30 April 2010, out of which	168896	101,3	85198390,1	108,2	35903544,1	105,9	26718368,7	105,9
31 December 2008	166728	100,0	78730295,5	100,0	33915262,8	100,0	25236251,3	100,0

*Note: column No. 1 shows the number of companies incorporated in the due period. The data concerning the amount of the subscribed capital include the records on the issued capital in companies incorporated in the related period plus the records of increase in capital and minus the subscribed capital in companies being struck-off from the trade register in the same period. The percentage inserted in column No. 1,2,3 and 4 shows the trend compared to the records of December 2007.*

Diagram no. 1

Diagram no. 2

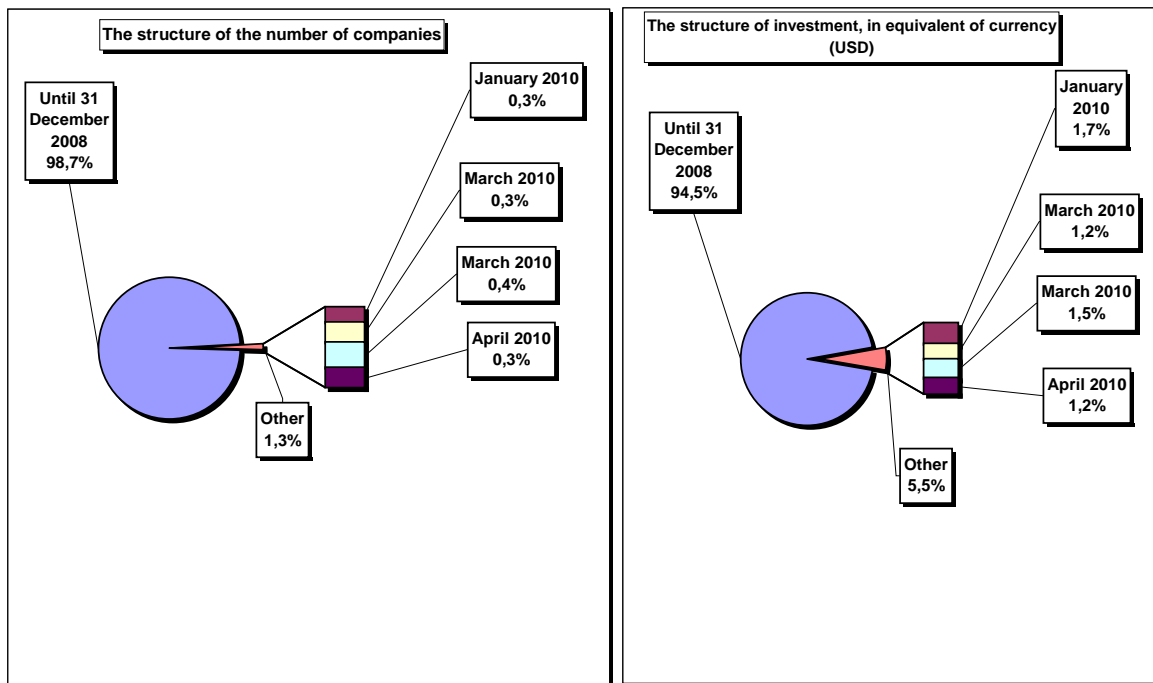


Table no. 2

**Classification\* of companies by foreign direct investment  
by the investors' countries of origin,  
balance account at 30 April 2010**

No. crt.	Countries	Companies by foreign investment		Amount of subscribed capital					
				Total in local currency		Total in equivalent of currency		Total in equivalent of currency	
				No.	%	thousand RON	%	thousand USD	%
0	1	2		3		4		5	
	<b>Total ROMANIA</b>	<b>168896</b>	<b>100,0</b>	<b>85198390,1</b>	<b>100,0</b>	<b>35903544,1</b>	<b>100,0</b>	<b>26718368,7</b>	<b>100,0</b>
1	OLANDA	3727	2,21	13860811,9	16,27	5877671,7	16,37	4410532,1	16,51
2	AUSTRIA	5810	3,44	10861614,0	12,75	5241177,3	14,60	3932914,6	14,72
3	GERMANIA	17833	10,56	10050959,3	11,80	5106342,8	14,22	3831736,5	14,34
4	FRANTA	6316	3,74	7040898,3	8,26	2698821,9	7,52	2025162,6	7,58
5	GRECIA	4835	2,86	5733378,6	6,73	2353135,5	6,55	1765763,8	6,61
6	CIPRU	4574	2,71	4771081,3	5,60	1990591,8	5,54	1493715,4	5,59
7	ITALIA	29340	17,37	3823116,7	4,49	1674845,1	4,66	1256783,1	4,70
8	ELVETIA	2107	1,25	2847049,6	3,34	1291935,8	3,60	969452,7	3,63
9	SPANIA	3925	2,32	2312647,7	2,71	969173,8	2,70	727256,0	2,72
10	MAREA BRITANIE	4201	2,49	2285592,5	2,68	968392,0	2,70	726669,4	2,72
11	S.U.A.	6135	3,63	2096732,4	2,46	958629,8	2,67	719344,0	2,69
12	LUXEMBURG	655	0,39	2294730,6	2,69	912717,1	2,54	684891,6	2,56
13	UNGARIA	10431	6,18	1640308,7	1,93	763827,7	2,13	573166,9	2,15
14	ANTILELE OLANDEZE	15	***	1999409,8	2,35	721865,2	2,01	541678,7	2,03
15	TURCIA	11673	6,91	1155254,4	1,36	523772,4	1,46	393032,3	1,47
16	CEHIA	494	0,29	1173129,4	1,38	473401,0	1,32	355234,3	1,33
17	CHINA	9833	5,82	943695,6	1,11	381965,4	1,06	286622,1	1,07
18	BELGIA	2393	1,42	738221,9	0,87	364999,2	1,02	273890,9	1,03
19	SUEDIA	1170	0,69	680246,0	0,80	272793,8	0,76	204701,1	0,77
20	DANEMARCA	653	0,39	545253,2	0,64	213534,4	0,59	160233,5	0,60
21	PORTUGALIA	386	0,23	518569,8	0,61	187702,4	0,52	140849,6	0,53
22	JAPONIA	229	0,14	484916,8	0,57	187665,9	0,52	140822,2	0,53
23	FINLANDA	123	0,07	427350,3	0,50	167683,0	0,47	125827,2	0,47
24	I.VIRGINE BRIT.	319	0,19	351055,3	0,41	148665,1	0,41	111556,4	0,42
25	LIBAN	3567	2,11	294239,7	0,35	138058,4	0,38	103597,3	0,39
26	POLONIA	552	0,33	441542,1	0,52	127357,7	0,35	95567,6	0,36
27	GIBRALTAR	60	0,04	212134,9	0,25	82132,3	0,23	61631,1	0,23
28	COREEA SUD	158	0,09	61520,4	0,07	79287,8	0,22	59496,6	0,22
29	NORVEGIA	296	0,18	264268,6	0,31	78506,1	0,22	58910,0	0,22
30	FARA CETATENIE	25	0,01	1046,9	***	76588,8	0,21	57471,3	0,22
31	CANADA	1552	0,92	175358,1	0,21	74879,3	0,21	56188,5	0,21
32	LIECHTENSTEIN	197	0,12	3296936,4	3,87	66243,2	0,18	49708,1	0,19
33	SINGAPORE	53	0,03	165325,1	0,19	62829,0	0,17	47146,1	0,18
34	ISRAEL	6024	3,57	361218,3	0,42	62700,4	0,17	47049,6	0,18
35	R. ARABA SIRIA	5444	3,22	78224,8	0,09	57867,6	0,16	43423,2	0,16
36	INS.MARSHALL	17	0,01	135452,7	0,16	48605,1	0,14	36472,7	0,14
37	SLOVENIA	158	0,09	107147,8	0,13	44661,4	0,12	33513,3	0,13
38	IRAK	5622	3,33	79441,0	0,09	41903,9	0,12	31444,1	0,12
39	MOLDOVA	3615	2,14	78504,3	0,09	35361,5	0,10	26534,8	0,10
40	BULGARIA	1203	0,71	85737,8	0,10	33093,2	0,09	24832,7	0,09
41	PANAMA	178	0,11	38518,4	0,05	26532,0	0,07	19909,3	0,07
42	IRLANDA	727	0,43	47975,8	0,06	25547,8	0,07	19170,7	0,07
43	IORDANIA	3143	1,86	49122,8	0,06	25272,0	0,07	18963,8	0,07
44	AUSTRALIA	654	0,39	45764,8	0,05	22134,0	0,06	16609,1	0,06
45	EGIPT	1372	0,81	48234,7		21631,0	0,06	16231,6	0,06
46	IRAN	2598	1,54	32909,7	0,04	18348,6	0,05	13768,6	0,05
47	MALTA	82	0,05	37952,2	0,04	15323,7	0,04	11498,7	0,04
48	BELIZE	31	0,02	34065,7	0,04	13578,8	0,04	10189,4	0,04
49	ARABIA SAUDITA	131	0,08	32487,0	0,04	13117,1	0,04	9842,9	0,04
50	NOUA ZEELANDA	39	0,02	34060,1	0,04	12327,4	0,03	9250,3	0,03

\*) includes countries selected upon the amount of the foreign direct investment, in equivalent of currency

\*\*\* Less than 0,01%

The structure upon sector of activity\* of companies by foreign direct investment, during April 2010

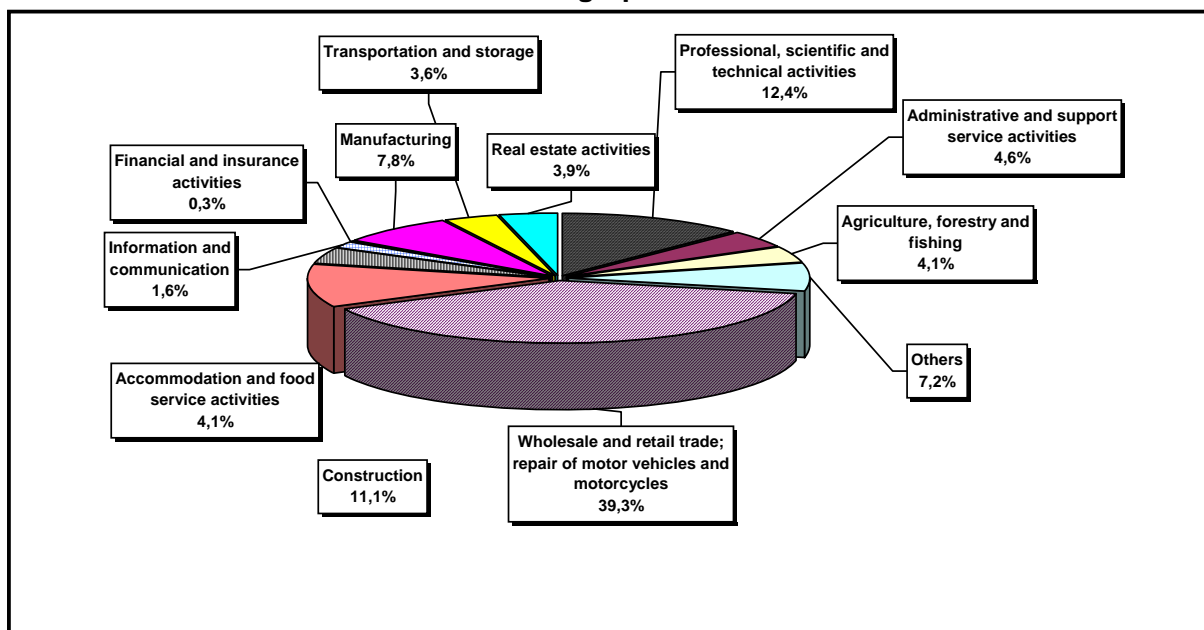
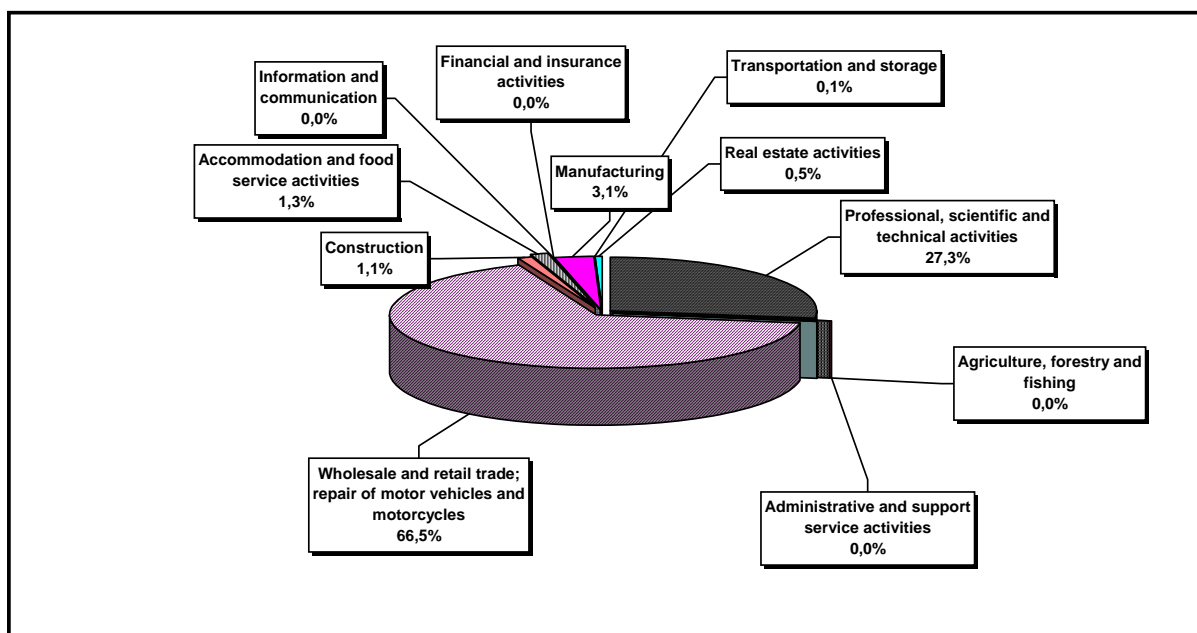


Diagram no. 4

The structure upon sector of activity in the amount of subscribed capital\*\* in companies by foreign direct investment, during April



\*) Calculated upon the main sector of activity declared

\*\*\*) Calculated upon the total amount of the subscribed capital, in equivalent of currency (USD)

Table no. 3

**The number of companies by foreign direct investment  
and the amount of the subscribed capital,  
balance account in the end of each month of 2010**

balance account at 31February 2010	Number of companies		Amount of subscribed capital					
			Total in local currency		Total in equivalent of currency		Total in equivalent of currency	
	No.	%	thousand RON	%	thousand USD	%	thousand EURO	%
0	1		2		3		4	
DECEMBER 2009	166728	100,0	78730295,5	100,0	33915262,8	100,0	25236251,3	100,0
JANUARY 2010	167182	100,3	80780637,5	102,6	34541560,9	101,8	25684612,1	101,8
FEBRUARY 2010	167715	100,6	82254384,8	104,5	34962042,4	103,1	25993280,5	103,0
MARCH 2010	168388	101,0	83892457,7	106,6	35482702,8	104,6	26402574,6	104,6
APRIL 2010	168896	101,3	85198390,1	108,2	35903544,1	105,9	26718368,7	105,9

*Note: column no. 1 shows the number of companies incorporated in the due period. The data concerning the amount of the subscribed capital include the records on the issued capital in companies incorporated in the related period plus the records of increase in capital and minus the subscribed capital in companies being struck-off from the trade register in the same period. The percentage inserted in column No. 1,2,3 and 4 shows the trend compared to the records of December 2007.*

Diagram no. 5

Diagram no. 6

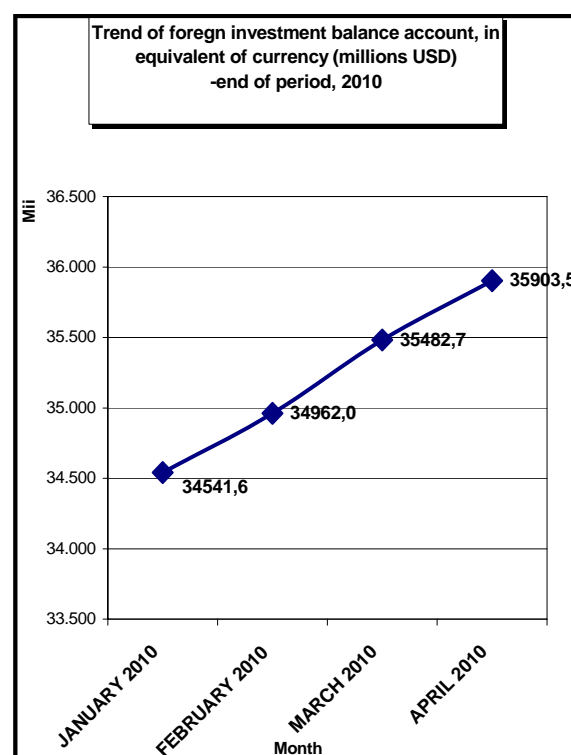
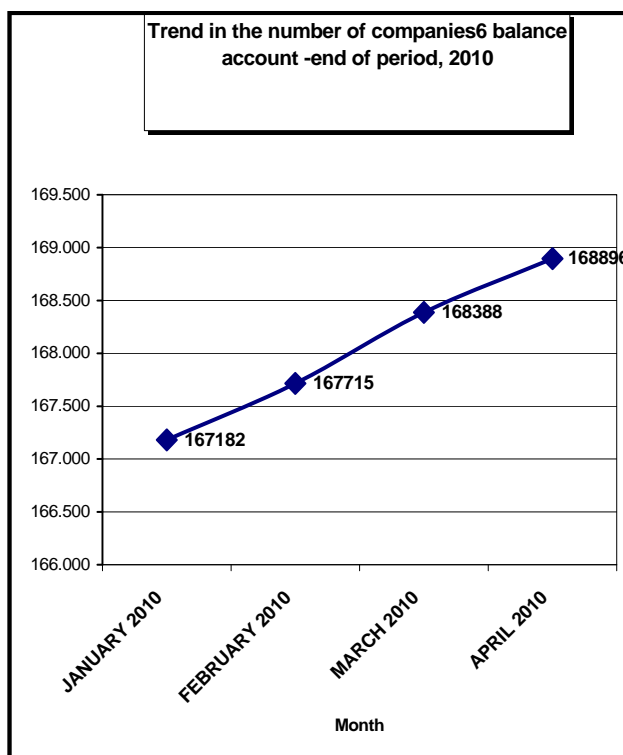


Table no. 4

**Comparative data on new companies by foreign direct investment and the subscribed capital,  
between January - December 2009 and 2010**

Month	2009				2010					
	New companies		Subscribed capital, in equivalent of currency		New companies		Trend related to 2007 (5/1)	Subscribed capital, in equivalent of currency		Trend related to 2007 (8/3)
	No.	%	thousand USD	%	No.	%	%	thousand USD	%	%
0	1	2	3	4	5	6	7	8	9	10
Jan-December out of which:	2734	100,0	21848,6	100,0	2168	100,0	79,3	20575,7	100,0	94,2
JANUARY	624	22,8	4312,9	19,7	454	20,9	72,8	2606,5	12,7	60,4
FEBRUARY	704	25,7	1810,3	8,3	533	24,6	75,7	1907,2	9,3	105,4
MARCH	754	27,6	1758,7	8,0	673	31,0	89,3	3195,7	15,5	181,7
APRIL	652	23,8	13966,7	63,9	508	23,4	77,9	12866,4	62,5	92,1

*Note: columns No. 1 and No. 5 show the number of new companies incorporated in the due period. The data on the subscribed capital include the initial capital subscribed in the related period. Columns No. 2, 4, 6 and 9 show the weight of each month in total period referred to.*

Diagram no. 7

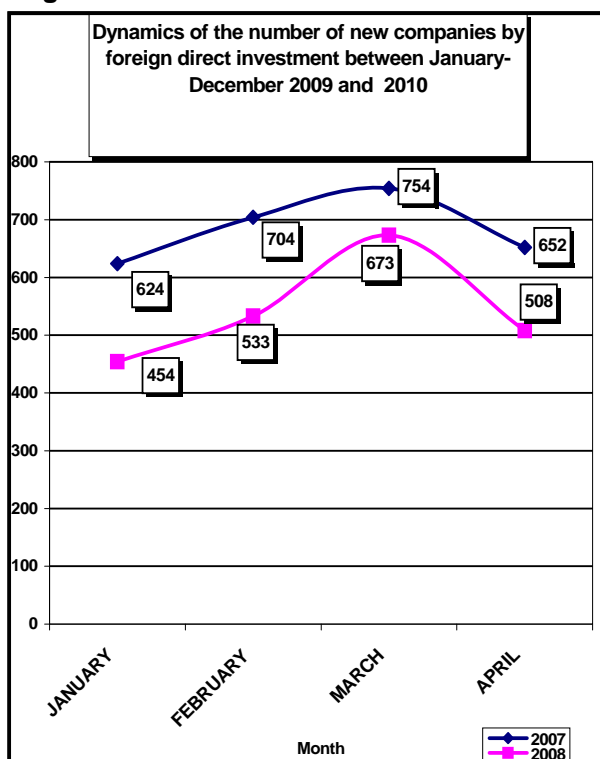


Diagram no. 8

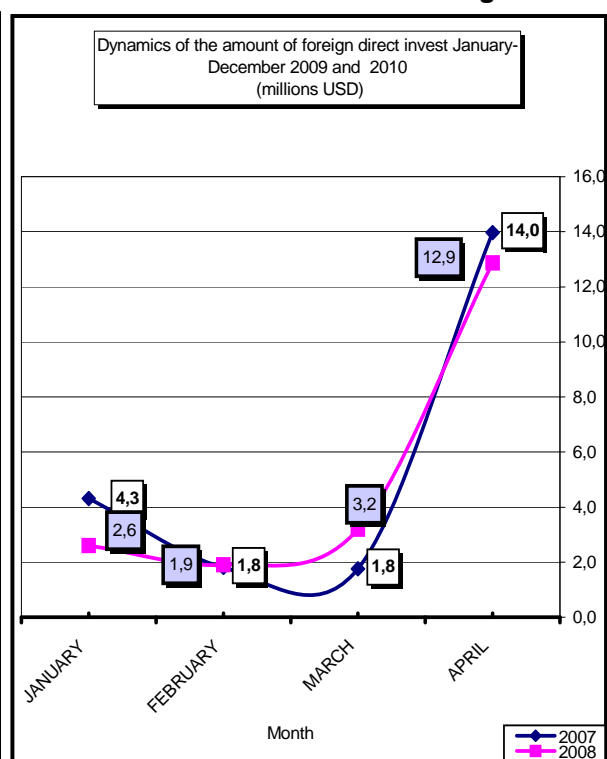


Table no. 5

**Incorporation of companies by foreign direct investment,  
during April 2010**

balance account at 30 Sept 2008	Number of companies		Amount of subscribed capital						Ranking by:	
			Total in local currency		Total in equivalent of currency		Total in equivalent of currency			
	No.	%	mii RON	%	USD	%	EURO	%		
0	1		2		3		4		5	
<b>Total ROMANIA</b>	<b>508</b>	<b>100,0</b>	<b>39285,6</b>	<b>100,0</b>	<b>12866388,0</b>	<b>100,0</b>	<b>9654778,5</b>	<b>100,0</b>	*	**
ALBA	5	0,98	0,7	***	244,0	***	183,1	***	15	22
ARAD	14	2,76	4,0	0,01	1306,0	0,01	980,0	0,01	8	13
ARGES	8	1,57	1565,1	3,98	514445,0	4,00	386033,2	4,00	12	2
BACAU	12	2,36	0,6	***	187,0	***	140,3	***	9	27
BIHOR	44	8,66	129,4	0,33	41840,0	0,33	31396,2	0,33	3	8
BISTRITA-NASAUD	2	0,39	0,6	***	199,0	***	149,3	***	18	24
BOTOSANI										
BRASOV	4	0,79	0,5	***	160,0	***	120,1	***	16	30
BRAILA	4	0,79	1,9	***	612,0	***	459,2	***	16	17
BUZAU	1	0,20	0,2	***	65,0	***	48,8	***	19	35
CARAS-SEVERIN	9	1,77	14,4	0,04	4706,0	0,04	3531,3	0,04	11	10
CALARASI										
CLUJ	26	5,12	34838,3	88,68	11403787,0	88,63	8557260,8	88,63	5	1
CONSTANTA	16	3,15	4,9	0,01	1585,0	0,01	1189,4	0,01	6	12
COVASNA	3	0,59	1,8	***	587,0	***	440,5	***	17	18
DAMBOVITA	1	0,20	0,2	***	66,0	***	49,5	***	19	34
DOLJ	3	0,59	0,4	***	116,0	***	87,0	***	17	32
GALATI	5	0,98	2,0	***	640,0	***	480,2	***	15	16
GIURGIU	4	0,79	0,9	***	296,0	***	222,1	***	16	21
GORJ	1	0,20	0,2	***	65,0	***	48,8	***	19	35
HARGHITA	4	0,79	1,5	***	476,0	***	357,2	***	16	20
HUNEDOARA	3	0,59	0,6	***	195,0	***	146,3	***	17	25
IALOMITA	2	0,39	0,4	***	130,0	***	97,6	***	18	31
IASI	15	2,95	44,7	0,11	14711,0	0,11	11039,0	0,11	7	9
MARAMURES	6	1,18	3,3	***	1074,0	***	805,9	***	14	14
MEHEDINTI	3	0,59	0,5	***	163,0	***	122,3	***	17	29
MURES	7	1,38	296,4	0,75	99352,0	0,77	74552,5	0,77	13	5
NEAMT	4	0,79	1,5	***	478,0	***	358,7	***	16	19
OLT	4	0,79	0,6	***	194,0	***	145,6	***	16	26
PRAHOVA	9	1,77	13,2	0,03	4280,0	0,03	3211,7	0,03	11	11
SALAJ	3	0,59	0,5	***	176,0	***	132,1	***	17	28
SATU MARE	10	1,97	2,1	***	685,0	***	514,0	***	10	15
SIBIU	12	2,36	537,2	1,37	177517,0	1,38	133206,6	1,38	9	4
SUCEAVA										
TELEORMAN	1	0,20	0,1	***	33,0	***	24,8	***	19	37
TIMIS	32	6,30	188,8	0,48	61934,0	0,48	46474,5	0,48	4	6
TULCEA	2	0,39	0,7	***	231,0	***	173,3	***	18	23
VASLUI										
VALCEA	1	0,20	0,2	***	57,0	***	42,8	***	19	36
VRANCEA	1	0,20	0,2	***	67,0	***	50,3	***	19	33
MUN. BUCURESTI	170	33,46	1474,4	3,75	483507,0	3,76	362817,7	3,76	1	3
ILFOV	57	11,22	152,9	0,39	50222,0	0,39	37686,0	0,39	2	7

\*) number of companies (column 1)

\*\*) capital in equivalent currency (column3)

\*\*\* Less than 0.01%

Note: Empty rows reveal that there are no operation in the current month

Table no. 6

**Statutory increase of the issued capital,  
in companies by foreign direct investment  
during April 2010**

balance account at 30 Sept 2008	Number of companies		Amount of subscribed capital						Ranking by:	
			Total in local currency		Total in equivalent of currency		Total in equivalent of currency			
	No.	%	mii RON	%	USD	%	EURO	%		
0	1		2		3		4		5	
<b>Total ROMANIA</b>	<b>766</b>	<b>100,00</b>	<b>1553645,2</b>	<b>100,00</b>	<b>519187490,0</b>	<b>100,00</b>	<b>389591872,5</b>	<b>100,00</b>	*	**
ALBA	10	1,31	38836,4	2,50	12727254,0	2,45	9550374,0	2,45	12	8
ARAD	20	2,61	290,7	0,02	99461,0	0,02	74634,3	0,02	6	30
ARGES	9	1,17	1030,2	0,07	351173,0	0,07	263515,9	0,07	13	26
BACAU	6	0,78	2674,7	0,17	868137,0	0,17	651439,3	0,17	16	23
BIHOR	39	5,09	31226,7	2,01	10317183,0	1,99	7741886,5	1,99	4	10
BISTRITA-NASAUD	5	0,65	14,3	***	4770,0	***	3579,3	***	17	35
BOTOSANI	2	0,26	1,8	***	598,0	***	448,7	***	19	39
BRASOV	15	1,96	12693,1	0,82	4173627,0	0,80	3131838,1	0,80	10	14
BRAILA	6	0,78	6454,8	0,42	2109629,0	0,41	1583039,5	0,41	16	16
BUZAU	7	0,91	7947,2	0,51	2644698,0	0,51	1984548,7	0,51	15	15
CARAS-SEVERIN	6	0,78	11,3	***	3810,0	***	2859,0	***	16	36
CALARASI	2	0,26	0,3	***	98,0	***	73,5	***	19	41
CLUJ	17	2,22	796,2	0,05	272046,0	0,05	204140,0	0,05	8	27
CONSTANTA	30	3,92	44558,8	2,87	14593112,0	2,81	10950490,8	2,81	5	5
COVASNA	5	0,65	387,4	0,02	789662,0	0,15	592552,6	0,15	17	25
DAMBOVITA	5	0,65	2772,0	0,18	885293,0	0,17	664312,9	0,17	17	22
DOLJ	7	0,91	494,7	0,03	162155,0	0,03	121679,1	0,03	15	29
GALATI	8	1,04	43993,6	2,83	14481607,0	2,79	10866818,8	2,79	14	6
GIURGIU	10	1,31	22173,2	1,43	7574224,0	1,46	5683604,0	1,46	12	11
GORJ	1	0,13	5,0	***	1665,0	***	1249,4	***	20	37
HARGHITA	9	1,17	6323,4	0,41	2068708,0	0,40	1552332,9	0,40	13	18
HUNEDOARA	7	0,91	4126,1	0,27	1359784,0	0,26	1020365,1	0,26	15	19
IALOMITA	4	0,52	274,4	0,02	89757,0	0,02	67352,5	0,02	18	31
IASI	19	2,48	41263,1	2,66	13621281,0	2,62	10221240,8	2,62	7	7
MARAMURES	6	0,78	67,7	***	21910,0	***	16441,0	***	16	33
MEHEDINTI	1	0,13	2603,8	0,17	841005,0	0,16	631079,8	0,16	20	24
MURES	10	1,31	20114,4	1,29	6734610,0	1,30	5053568,1	1,30	12	12
NEAMT	6	0,78	3150,4	0,20	1035496,0	0,20	777023,4	0,20	16	20
OLT	4	0,52	64,8	***	21224,0	***	15926,2	***	18	34
PRAHOVA	16	2,09	62325,3	4,01	20417625,0	3,93	15321133,3	3,93	9	4
SALAJ	2	0,26	30606,5	1,97	10948807,0	2,11	8215849,4	2,11	19	9
SATU MARE	12	1,57	530,7	0,03	175045,0	0,03	131351,6	0,03	11	28
SIBIU	17	2,22	6272,7	0,40	2086158,0	0,40	1565427,2	0,40	8	17
SUCEAVA	4	0,52	13347,3	0,86	4417267,0	0,85	3314662,5	0,85	18	13
TELEORMAN	4	0,52	4,5	***	1479,0	***	1109,8	***	23	42
TIMIS	42	5,48	64779,9	4,17	21630829,0	4,17	16231506,6	4,17	3	3
TULCEA	1	0,13	3101,9	0,20	1001819,0	0,19	751752,6	0,19	20	21
VASLUI	1	0,13	0,2	***	77,0	***	57,8	***	20	42
VALCEA	5	0,65	441,3	0,03	80080,0	0,02	60091,0	0,02	17	32
VRANCEA	4	0,52	0,5	***	181,0	***	135,8	***	18	40
MUN. BUCURESTI	314	40,99	699636,4	45,03	229343468,0	44,17	172096502,4	44,17	1	1
ILFOV	68	8,88	378247,7	24,35	131230678,0	25,28	98473878,0	25,28	2	2

\*) number of companies (column 1)

\*\*) capital in equivalent currency (column3)

\*\*\* Less than 0.01%

**Note: Empty rows reveal that there are no operation in the current month**

Table no. 7

**Strike-off of companies by foreign direct investment,  
from the trade register, during April 2010**

balance account at 30 Sept 2008	Number of companies		Amount of subscribed capital						Ranking by:	
			Total in local currency		Total in equivalent of currency		Total in equivalent of currency			
	No.	%	mii RON	%	USD	%	EURO	%		
0	1		2		3		4		5	
<b>Total ROMANIA</b>	<b>53</b>	<b>100,0</b>	<b>4153,4</b>	<b>100,0</b>	<b>1442586,0</b>	<b>100,0</b>	<b>1082498,7</b>	<b>100,0</b>	*	**
ALBA	1	1,89	527,0	12,69	210222,0	14,57	157748,0	14,57	5	3
ARAD										
ARGES	1	1,89	0,2	***	66,0	***	49,5	***	5	17
BACAU	2	3,77	0,4	***	114,0	***	85,5	***	4	13
BIHOR										
BISTRITA-NASAUD										
BOTOSANI										
BRASOV	1	1,89	0,0	***	13,0	***	9,8	***	5	19
BRAILA										
BUZAU										
CARAS-SEVERIN										
CALARASI	2	3,77	1,0	0,02	378,0	0,03	283,6	0,03	4	9
CLUJ	2	3,77	0,4	***	149,0	0,01	111,8	0,01	4	12
CONSTANTA	1	1,89	4,2	0,10	1381,0	0,10	1036,3	0,10	5	6
COVASNA										
DAMBOVITA										
DOLJ										
GALATI	2	3,77	0,4	***	180,0	0,01	135,1	0,01	4	11
GIURGIU	4	7,55	2,2	0,05	698,0	0,05	523,8	0,05	3	7
GORJ										
HARGHITA										
HUNEDOARA	1	1,89	0,2	***	64,0	***	48,0	***	5	18
IALOMITA										
IASI	1	1,89	0,3	***	85,0	***	63,8	***	5	15
MARAMURES	1	1,89	1,5	0,04	551,0	0,04	413,5	0,04	5	8
MEHEDINTI										
MURES	1	1,89	0,2	***	87,0	***	65,3	***	5	14
NEAMT	1	1,89	0,2	***	66,0	***	49,5	***	5	17
OLT										
PRAHOVA	2	3,77	1,1	0,03	365,0	0,03	273,9	0,03	4	10
SALAJ										
SATU MARE										
SIBIU	1	1,89	0,2	***	67,0	***	50,3	***	5	16
SUCEAVA	1	1,89	5,0	0,12	1509,0	0,10	1132,3	0,10	5	5
TELEORMAN										
TIMIS	2	3,77	1,1	0,03	5071,0	0,35	3805,2	0,35	4	4
TULCEA										
VASLUI										
VALCEA										
VRANCEA										
MUN. BUCURESTI	20	37,74	2788,1	67,13	921381,0	63,87	691392,9	63,87	1	1
ILFOV	6	11,32	819,7	19,74	300139,0	20,81	225220,6	20,81	2	2

\*) number of companies (column 1)

\*\*) capital in equivalent currency (column3)

\*\*\* Less than 0.01%

Note: Empty rows reveal that there are no operation in the current month

Table no. 8

**Changes by cession in the issued capital  
of the companies by foreign direct investment,  
during April 2010**

balance account at 30 December 2008	Number of companies		Amount of subscribed capital						Ranking by:	
			Total in local currency		Total in equivalent of currency		Total in equivalent of currency			
	No.	%	mii RON	%	USD	%	EURO	%		
0	1		2		3		4		5	
<b>Total ROMANIA</b>	<b>1127</b>	<b>100,0</b>	<b>282845,0</b>	<b>100,0</b>	<b>109770056</b>	<b>100,0</b>	<b>82370093</b>	<b>100,0</b>	*	**
ALBA	13	1,2	279,2	0,10	182953	0,17	137286	0,17	14	18
ARAD	65	5,8	950,2	0,34	401091	0,37	300974	0,37	3	12
ARGES	10	0,9	72721,9	25,71	25695112,0	23,41	19281294,3	23,41	17	3
BACAU	11	1,0	139,5	0,05	39784	0,04	29853	0,04	16	27
BIHOR	41	3,6	708,3	0,25	337964	0,31	253604	0,31	4	13
BISTRITA-NASAUD	8	0,7	8,5 ***		2999 ***		2250 ***		19	33
BOTOSANI	2	0,2	883,1	0,31	278761	0,25	209179	0,25	25	41
BRASOV	25	2,2	144,1	0,05	73236	0,07	54955	0,07	8	25
BRAILA	6	0,5	1,3 ***		1424 ***		1069 ***		21	35
BUZAU	15	1,3	75445,6	26,67	26593546	24,23	19955468	24,23	13	42
CARAS-SEVERIN	13	1,2	43,5	0,02	16351	0,01	12270	0,01	14	31
CALARASI	2	0,2	22,5	0,01	6752	0,01	5067	0,01	25	38
CLUJ	41	3,6	470,8	0,17	142473	0,13	106910	0,13	4	20
CONSTANTA	28	2,5	2458,0	0,87	1122179	1,02	842069	1,02	6	9
COVASNA	6	0,5	403,9	0,14	805308	0,73	604293	0,73	21	11
DAMBOVITA	18	1,6	599,6	0,21	181850	0,17	136458	0,17	12	19
DOLJ	9	0,8	103,1	0,04	84749	0,08	63595	0,08	18	24
GALATI	10	0,9	35,3	0,01	12213	0,01	9164	0,01	17	32
GIURGIU	9	0,8	3607,4	1,28	1188301	1,08	891686	1,08	18	8
GORJ	4	0,4	7,6 ***		2388 ***		1792 ***		23	34
HARGHITA	36	3,2	90,5	0,03	395	0,00	296	0,00	5	37
HUNEDOARA	9	0,8	329,5	0,12	111687	0,10	83809	0,10	18	22
IALOMITA	7	0,6	281,9	0,10	92162	0,08	69157	0,08	20	40
IASI	18	1,6	13842,8	4,89	4527041	4,12	3397036	4,12	12	6
MARAMURES	12	1,1	127,6	0,05	84863	0,08	63680	0,08	15	23
MEHEDINTI	2	0,2	0,4	0,00	130	0,00	98	0,00	25	36
MURES	22	2,0	15415,4	5,45	6054700	5,52	4543372	5,52	10	5
NEAMT	5	0,4	982,0	0,35	303507	0,28	227748	0,28	22	14
OLT	7	0,6	848,5	0,30	286204	0,26	214764	0,26	20	15
PRAHOVA	26	2,3	1937,6	0,69	810444	0,74	608147	0,74	7	10
SALAJ	5	0,4	30614,4	10,82	10970715	9,99	8232289	9,99	22	4
SATU MARE	19	1,7	519,8	0,18	214962	0,20	161305	0,20	11	17
SIBIU	23	2,0	1225,0	0,43	276464	0,25	207455	0,25	9	16
SUCEAVA	6	0,5	89,0	0,03	113995	0,10	85540	0,10	21	21
TELEORMAN	3	0,3	137,2	0,05	44352	0,04	33281	0,04	24	39
TIMIS	65	5,8	3526,1	1,25	1419492	1,29	1065169	1,29	3	7
TULCEA	5	0,4	199,4	0,07	60017	0,05	45036	0,05	22	26
VASLUI	3	0,3	22,2 ***		25148	0,02	18871	0,02	24	30
VALCEA	9	0,8	305,0	0,11	39228	0,04	29436	0,04	18	28
VRANCEA	10	0,9	94,4	0,03	32473	0,03	24367	0,03	17	29
MUN. BUCURESTI	388	34,4	129729,8	45,87	50973373	46,44	38249789	46,44	1	1
ILFOV	111	9,8	78157,1	27,63	30191466	27,50	22655303	27,50	2	2

\*) number of companies (column 1)

\*\*) capital in equivalent currency (column 3)

\*\*\* Less than 0,01%

Note: Empty rows reveal that there are no operation in the current month

Table no. 9

**Incorporation of companies by foreign direct investment,  
according to the development regions,  
during April 2010**

Development regions	Number of companies		Amount of subscribed capital						Ranking by:	
			Total in local currency		Total in equivalent of currency		Total in equivalent of currency			
	No.	%	mii RON	%	USD	%	EURO	%		
0	1		2		3		4		5	
<b>Total ROMANIA</b>	<b>508</b>	<b>100,0</b>	<b>39285,6</b>	<b>100,0</b>	<b>12866388,0</b>	<b>100,0</b>	<b>9654778,5</b>	<b>100,0</b>	*	**
NORTH-EAST	31	6,1	46,8	0,1	15376,0	0,1	11538,0	0,1	5	6
SOUTH-EAST	29	5,7	9,8	0,0	3200,0	0,0	2401,2	0,0	6	7
SOUTH-MUNTENIA	25	4,9	1579,9	4,0	519250,0	4,0	389638,8	4,0	7	3
SOUTH-WEST OLTENIA	12	2,4	1,8	***	595,0	***	446,5	***	8	8
WEST	58	11,4	207,8	0,5	68141,0	0,5	51132,2	0,5	3	5
NORTH-WEST	91	17,9	34974,2	89,0	11447761,0	89,0	8590258,3	89,0	2	1
CENTER	35	6,9	838,0	2,1	278336,0	2,2	208859,9	2,2	4	4
BUCHAREST-ILFOV	227	44,7	1627,3	4,1	533729,0	4,1	400503,6	4,1	1	2

Table no. 10

**Statutory increase in the issued capital of companies by  
foreign direct investment, according to the development regions,  
during April 2010**

Development regions	Number of companies		Amount of subscribed capital						Ranking by:	
			Total in local currency		Total in equivalent of currency		Total in equivalent of currency			
	No.	%	mii RON	%	USD	%	EURO	%		
0	1		2		3		4		5	
<b>Total ROMANIA</b>	<b>766</b>	<b>100,0</b>	<b>1553645,2</b>	<b>100,0</b>	<b>519187490,0</b>	<b>100,0</b>	<b>389591872,5</b>	<b>100,0</b>	*	**
NORTH-EAST	38	5,0	60437,5	3,9	19942856,0	3,8	14964872,5	3,8	7	7
SOUTH-EAST	56	7,3	106056,9	6,8	34831046,0	6,7	26136786,2	6,7	5	2
SOUTH-MUNTENIA	50	6,5	88579,8	5,7	29319649,0	5,6	22001102,1	5,6	6	3
SOUTH-WEST OLTENIA	18	2,3	3609,6	0,2	1106129,0	0,2	830025,5	0,2	8	8
WEST	75	9,8	69208,0	4,5	23093884,0	4,4	17329365,0	4,4	3	5
NORTH-WEST	81	10,6	63242,0	4,1	21739761,0	4,2	16313247,8	4,2	2	6
CENTER	66	8,6	84627,3	5,4	28580019,0	5,5	21446092,9	5,5	4	4
BUCHAREST-ILFOV	382	49,9	1077884,1	69,4	360574146,0	69,4	270570380,5	69,4	1	1

Table no. 11

**Strike-off of companies by foreign direct investment and the amount  
of their issued capital, according to the development regions,  
during April 2010**

Development regions	Number of companies		Amount of subscribed capital						Ranking by:	
			Total in local currency		Total in equivalent of currency		Total in equivalent of currency			
	No.	%	mii RON	%	USD	%	EURO	%		
0	1		2		3		4		5	
<b>Total ROMANIA</b>	<b>53</b>	<b>100,0</b>	<b>4153,4</b>	<b>100,0</b>	<b>1442586,0</b>	<b>100,0</b>	<b>1082498,7</b>	<b>100,0</b>	*	**
NORTH-EAST	5	9,4	5,8	0,1	1774,0	0,1	1331,2	0,1	3	4
SOUTH-EAST	3	5,7	4,6	0,1	1561,0	0,1	1171,4	0,1	5	5
SOUTH-MUNTENIA	9	17,0	4,5	0,1	1507,0	0,1	1130,8	0,1	2	6
SOUTH-WEST OLTENIA									6	8
WEST	3	5,7	1,3	0,0	5135,0	0,4	3853,2	0,4	5	3
NORTH-WEST	3	5,7	1,9	0,0	700,0	0,0	525,3	0,0	5	7
CENTER	4	7,5	527,5	12,7	210389,0	14,6	157873,3	14,6	4	2
BUCHAREST-ILFOV	26	49,1	3607,8	86,9	1221520,0	84,7	916613,5	84,7	1	1

\*) number of companies (column 1)

\*\*) total issued capital, in equivalent of currency (column3)

\*\*\* Less than 0.01%

Note: Empty rows reveal that there are no operation in the current month

Table no. 12

**Incorporation of companies by foreign direct investment, by continents  
according to the investors' country of origin,  
during April 2010**

Continent	Number of companies		Amount of subscribed capital						Ranking by:	
			Total in local currency		Total in equivalent of currency		Total in equivalent of currency			
	No.	%	mii RON	%	USD	%	EURO	%	0	5
	1		2		3		4			
<b>Total ROMANIA</b>	<b>508</b>	<b>100,0</b>	<b>39285,6</b>	<b>100,0</b>	<b>12866388,0</b>	<b>100,0</b>	<b>9654778,5</b>	<b>100,0</b>	*	**
EUROPE	411	80,9	38899,1	99,0	12739745,0	99,0	9559747,1	99,0	1	1
AFRICA	14	2,8	3,1	***	1007,0	***	755,6	***	4	5
NORTH AMERICA	16	3,1	42,8	0,1	14072,0	0,1	10559,5	0,1	3	4
SOUTH AMERICA	14	2,8	63,0	0,2	20673,0	0,2	15512,8	0,2	4	3
ASIA	62	12,2	277,0	0,7	90662,0	0,7	68031,6	0,7	2	2
OCEANIA	3	0,6	0,6	***	196,0	***	147,1	***	5	6

Table no. 13

**Increase in the issued capital of companies by foreign direct investment,  
by continents according to the investors' country of origin,  
during April 2010**

Continent	Number of companies		Amount of subscribed capital						Ranking by:	
			Total in local currency		Total in equivalent of currency		Total in equivalent of currency			
	No.	%	mii RON	%	USD	%	EURO	%	0	5
	1		2		3		4			
<b>Total ROMANIA</b>	<b>766</b>	<b>100,0</b>	<b>1553645,2</b>	<b>100,0</b>	<b>519187490,0</b>	<b>100,0</b>	<b>389591872,5</b>	<b>100,0</b>	*	**
EUROPE	613	80,0	1403152,4	90,3	470028496,0	90,5	352703571,2	90,5	1	1
AFRICA	40	5,2	344,2	0,0	113964,0	0,0	85517,2	0,0	3	5
NORTH AMERICA	16	2,1	60858,3	3,9	19776539,0	3,8	14840070,3	3,8	4	3
SOUTH AMERICA	11	1,4	8424,6	0,5	2951741,0	0,6	2214949,9	0,6	5	4
ASIA	120	15,7	80865,3	5,2	26316612,0	5,1	19747660,2	5,1	2	2
OCEANIA	2	0,3	0,4	***	138,0	***	103,6	***	6	6

Table no. 14

**Strike-off of companies by foreign direct investment and their issued capital,  
by continents according to the investors' country of origin,  
during April 2010**

Continent	Number of companies		Amount of subscribed capital						Ranking by:	
			Total in local currency		Total in equivalent of currency		Total in equivalent of currency			
	No.	%	mii RON	%	USD	%	EURO	%	0	5
	1		2		3		4			
<b>Total ROMANIA</b>	<b>53</b>	<b>100,0</b>	<b>4153,4</b>	<b>100,0</b>	<b>1442586,0</b>	<b>100,0</b>	<b>1082498,7</b>	<b>100,0</b>	*	**
EUROPE	46	86,8	3341,7	80,5	1139074,0	79,0	854747,0	79,0	1	1
AFRICA	2	3,8	1,2	0,0	426,0	0,0	319,7	0,0	4	4
NORTH AMERICA	1	1,9	0,0	***	8,0	***	6,0	***	5	5
SOUTH AMERICA	3	5,7	368,6	8,9	136873,0	9,5	102707,8	9,5	3	3
ASIA	8	15,1	441,9	10,6	166205,0	11,5	124718,2	11,5	2	2

\*) number of companies (column 1)

\*\*) total issued capital, in equivalent of currency (column3)

\*\*\* Sub 0,01%

Note: Empty rows reveal that there are no operation in the current month

Table no. 15

**Incorporation of companies by foreign direct investment, by economical groups  
of countries according to the investors' country of origin,  
during April 2010**

Economical groups	Number of companies		Amount of subscribed capital						Ranking by:	
			Total in local currency		Total in equivalent of currency		Total in equivalent of currency			
	No.	%	mii RON	%	USD	%	EURO	%		
0	1	2		3		4		5		
<b>Total ROMANIA</b>	<b>508</b>		<b>39285,6</b>		<b>12866388,0</b>		<b>9654778,5</b>		*	**
E.U.	327	64,4	38678,1	98,5	12667450,0	98,5	9505497,8	98,5	2	2
E.A.F.T.A.	9	1,8	115,4	0,3	37267,0	0,3	27964,7	0,3	4	3
O.E.C.D.	378	74,4	38812,1	98,8	12711347,0	98,8	9538437,6	98,8	1	1
C.E.F.T.A.	30	5,9	58,5	0,1	19692,0	0,2	14776,6	0,2	3	4

Table no. 16

**Increase in the issued capital of companies by foreign direct investment,  
by economical groups of countries according to the investors' country of origin,  
during April 2010**

Economical groups	Number of companies		Amount of subscribed capital						Ranking by:	
			Total in local currency		Total in equivalent of currency		Total in equivalent of currency			
	No.	%	mii RON	%	USD	%	EURO	%		
0	1	2		3		4		5		
<b>Total ROMANIA</b>	<b>766</b>		<b>1553645,2</b>		<b>519187490,0</b>		<b>389591872,5</b>		*	**
E.U.	497	64,9	1325307,1	85,3	442215984,0	85,2	331833406,2	85,2	2	1
E.A.F.T.A.	16	2,1	56660,3	3,6	18660729,0	3,6	14002780,3	3,6	4	3
O.E.C.D.	517	67,5	1196523,1	77,0	400536034,0	77,1	300557287,1	77,1	1	2
C.E.F.T.A.	38	5,0	1707,5	0,1	570099,0	0,1	427795,2	0,1	3	4

Table no. 17

**Strike-off of companies by foreign direct investment and their issued capital,  
by economical groups of countries according to the investors' country of origin,  
during April 2010**

Economical groups	Number of companies		Amount of subscribed capital						Ranking by:	
			Total in local currency		Total in equivalent of currency		Total in equivalent of currency			
	No.	%	mii RON	%	USD	%	EURO	%		
0	1	2		3		4		5		
<b>Total ROMANIA</b>	<b>53</b>		<b>4153,4</b>		<b>1442586,0</b>		<b>1082498,7</b>		*	**
E.U.	26	49,1	79,6	1,9	25272,0	1,8	18963,8	1,8	2	3
E.A.F.T.A.	1	1,9	2716,0	65,4	897094,0	62,2	673168,2	62,2	4	2
O.E.C.D.	37	69,8	3310,5	79,7	1128651,0	78,2	846925,8	78,2	1	1
C.E.F.T.A.	5	9,4	1,3	0,0	429,0	0,0	321,9	0,0	3	4

\*) number of companies (column 1)

\*\*) total issued capital, in equivalent of currency (column3)

\*\*\* Less than 0.01%

Note: Each economic group's weight is calculated related to the total Romania.

The weights' sum is different from 100% due to the fact that one country might be part of more than one economical group.

Empty rows reveal that there are no operations recorded in the current month.

Table no. 18

**Classification\* by countries of origin of investors  
in companies by foreign direct investment,  
incorporated during April 2010**

No. crt.	Countries	Number of companies		Amount of subscribed capital					
				Total in local currency		Total in equivalent of currency		Total in equivalent of currency	
		No.	%	mii RON	%	USD	%	EURO	%
0	1	2		3		4		5	
	<b>Total ROMANIA, out of which:</b>	<b>508</b>	<b>100,0</b>	<b>39285,6</b>	<b>100,0</b>	<b>12866388,0</b>	<b>100,0</b>	<b>9654778,5</b>	<b>100,0</b>
1	NETHERLAND	16	3,1	34811,9	88,61	11395053,0	88,56	8550706,9	88,56
2	ITALY	90	17,7	1727,1	4,40	567636,0	4,41	425947,0	4,41
3	SWEDEN	1	0,2	1000,0	2,55	327332,0	2,54	245625,9	2,54
4	GERMANY	45	8,9	606,3	1,54	200242,0	1,56	150259,1	1,56
5	HUNGARY	43	8,5	316,1	0,80	105810,0	0,82	79398,5	0,82
6	CHINA	14	2,8	151,7	0,39	49702,0	0,39	37295,8	0,39
7	LIECHTENSTEIN	2	0,4	111,7	0,28	36064,0	0,28	27062,0	0,28
8	LEBANON	8	1,6	103,1	0,26	33678,0	0,26	25271,6	0,26
9	CANADA	9	1,8	61,3	0,16	20128,0	0,16	15103,8	0,16
10	MOLDAVIA	17	3,3	55,6	0,14	18756,0	0,15	14074,3	0,15
11	FRANCE	22	4,3	50,6	0,13	16774,0	0,13	12587,0	0,13
12	GREECE	12	2,4	46,4	0,12	15364,0	0,12	11529,0	0,12
13	SPAIN	18	3,5	44,7	0,11	14489,0	0,11	10872,4	0,11
14	U.S.A.	16	3,1	42,8	0,11	14072,0	0,11	10559,5	0,11
15	TURKEY	41	8,1	42,5	0,11	13799,0	0,11	10354,6	0,11
16	PORTUGAL	4	0,8	25,7	0,07	8571,0	0,07	6431,6	0,07
17	AUSTRIA	20	3,9	15,4	0,04	4967,0	0,04	3727,2	0,04
18	CYPRUS	16	3,1	15,1	0,04	4960,0	0,04	3721,9	0,04
19	ISRAEL	12	2,4	13,1	0,03	4288,0	0,03	3217,7	0,03
20	CZECH REPUBLIC	10	2,0	12,3	0,03	4075,0	0,03	3057,8	0,03
21	UKRAINE	2	0,4	4,3	0,01	1406,0	0,01	1055,0	0,01
22	GREAT BRITAIN	12	2,4	3,3	***	1078,0	***	808,9	***
23	IRAQ	9	1,8	2,7	***	883,0	***	662,6	***
24	NORWAY	3	0,6	2,2	***	713,0	***	535,0	***
25	VIETNAM	1	0,2	2,0	***	660,0	***	495,3	***
26	SERBIA	6	1,2	1,9	***	622,0	***	466,7	***
27	SWITZERLAND	4	0,8	1,5	***	490,0	***	367,7	***
28	IRAN	4	0,8	1,4	***	451,0	***	338,4	***
29	BULGARIA	7	1,4	1,3	***	425,0	***	318,9	***
30	EGYPT	7	1,4	1,3	***	422,0	***	316,7	***
31	I.VIRGINE BRIT.	2	0,4	1,2	***	385,0	***	288,9	***
32	A.R. OF SYRIA	4	0,8	1,1	***	367,0	***	275,4	***
33	JORDAN	5	1,0	0,9	***	305,0	***	228,9	***
34	CAMEROON	1	0,2	0,7	***	230,0	***	172,6	***
35	INDIA	3	0,6	0,6	***	197,0	***	147,8	***
36	BELGIUM	3	0,6	0,6	***	197,0	***	122,3	***
37	DENMARK	3	0,6	0,5	***	163,0	***	101,3	***
38	SEYCHELLES	3	0,6	0,4	***	135,0	***	99,8	***
39	AUSTRALIA	2	0,4	0,4	***	133,0	***	98,3	***
40	PAKISTAN	2	0,4	0,4	***	131,0	***	98,3	***
41	POLAND	2	0,4	0,4	***	131,0	***	98,3	***
42	SLOVAKIA	2	0,4	0,4	***	131,0	***	96,8	***
43	MUNTENEGRO	1	0,2	0,4	***	129,0	***	74,3	***
44	SUDAN	2	0,4	0,3	***	99,0	***	68,3	***
45	ALBANIA	2	0,4	0,3	***	91,0	***	49,5	***
46	GUINEEA	1	0,2	0,2	***	66,0	***	49,5	***
47	MONACO	1	0,2	0,2	***	66,0	***	49,5	***
48	LITHUANIA	1	0,2	0,2	***	66,0	***	48,8	***
49	MACEDONIA	1	0,2	0,2	***	65,0	***	48,8	***
50	MOROCCO	1	0,2	0,2	***	65,0	***	48,8	***

\*) on countries selected upon the amount of the foreign direct investment, in equivalent of currency, ranking by a descending scale (col 4)

\*\*\* Less than 0.01%

Table no. 19

**Classification\* by investors' countries of origin according to the amount  
of the increase in the issued capital, during April 2010**

No. crt.	Countries	Number of companies		Amount of subscribed capital							
				Total in local currency		Total in equivalent of currency		Total in equivalent of currency			
		No.	%	mii RON	%	USD	%	EURO	%		
0	1	2		3		4		5			
	<b>Total ROMANIA</b>	<b>766</b>	<b>100,0</b>	<b>1553645,2</b>	<b>100,0</b>	<b>519187490,0</b>	<b>100,0</b>	<b>389591872,5</b>	<b>100,0</b>		
1	NETHERLAND	31	4,05	439939,3	28,32	149006847,0	28,70	111812895,4	28,70		
2	AUSTRIA	39	5,09	294500,5	18,96	96976291,0	18,68	72769809,6	18,68		
3	CYPRUS	62	8,09	273503,3	17,60	91233650,0	17,57	68460602,8	17,57		
4	U.S.A.	16	2,09	60858,3	3,92	19776539,0	3,81	14840070,3	3,81		
5	SWITZERLAND	15	1,96	56660,1	3,65	18660663,0	3,59	14002730,8	3,59		
6	LEBANON	10	1,31	53491,8	3,44	17309489,0	3,33	12988826,5	3,33		
7	GERMANY	55	7,18	52807,4	3,40	17244663,0	3,32	12940181,9	3,32		
8	GREECE	17	2,22	49504,8	3,19	16176090,0	3,12	12138337,9	3,12		
9	ITALY	112	14,62	41922,4	2,70	14877289,0	2,87	11163733,7	2,87		
10	SPAIN	25	3,26	34625,5	2,23	11487908,0	2,21	8620384,1	2,21		
11	DENMARK	5	0,65	31056,9	2,00	10280742,0	1,98	7714541,7	1,98		
12	HUNGARY	51	6,66	28373,9	1,83	9435174,0	1,82	7080037,9	1,82		
13	LUXEMBOURG	9	1,17	28501,3	1,83	9371022,0	1,80	7031899,0	1,80		
14	FRANCE	30	3,92	27553,5	1,77	8550374,0	1,65	6416094,9	1,65		
15	TURKEY	56	7,31	19183,7	1,23	8477950,0	1,63	6361748,8	1,63		
16	SOUTH KOREA	2	0,26	7977,8	0,51	2625917,0	0,51	1970455,6	0,51		
17	JORDAN	3	0,39	7820,3	0,50	2596810,0	0,50	1948614,1	0,50		
18	CHINA	42	5,48	7497,4	0,48	2491378,0	0,48	1869499,2	0,48		
19	CZECH REPUBLIC	1	0,13	5602,7	0,36	1853168,0	0,36	1390594,4	0,36		
20	GREAT BRITAIN	16	2,09	5622,9	0,36	1825098,0	0,35	1369531,0	0,35		
21	PANAMA	5	0,65	3933,6	0,25	1499119,0	0,29	1124920,4	0,29		
22	I.VIRGINE BRIT.	3	0,39	4448,8	0,29	1438963,0	0,28	1079780,0	0,28		
23	BELGIUM	11	1,44	4323,3	0,28	1434073,0	0,28	1076110,6	0,28		
24	FINLAND	7	0,91	4000,2	0,26	1327032,0	0,26	995788,4	0,26		
25	POLAND	1	0,13	2500,0	0,16	822098,0	0,16	616892,2	0,16		
26	A.R. OF SYRIA	19	2,48	2016,7	0,13	566956,0	0,11	425436,8	0,11		
27	CROATIA	1	0,13	1500,0	0,10	498604,0	0,10	374146,3	0,10		
28	PORTUGAL	9	1,17	912,8	0,06	299570,0	0,06	224793,6	0,06		
29	ISRAEL	19	2,48	931,2	0,06	298066,0	0,06	223665,0	0,06		
30	IRAQ	13	1,70	406,5	0,03	195871,0	0,04	146979,2	0,04		
31	IRAN	5	0,65	459,1	0,03	145691,0	0,03	109324,7	0,03		
32	AZERBAIDIJAN	2	0,26	284,2	0,02	100519,0	0,02	75428,2	0,02		
33	EGYPT	33	4,31	239,2	0,02	79297,0	0,02	59503,5	0,02		
34	MOLDAVIA	31	4,05	203,3	0,01	70106,0	0,01	52606,7	0,01		
35	UNITED ARAB EMIRATES	4	0,52	171,1	0,01	55482,0	0,01	41633,0	0,01		
36	SUDAN	5	0,65	104,5	***	34517,0	***	25901,1	***		
37	INDIA	1	0,13	81,0	***	26871,0	***	20163,7	***		
38	CANADA	2	0,26	42,1	***	13626,0	***	10224,8	***		
39	SLOVAKIA	2	0,26	49,3	***	12307,0	***	9235,0	***		
40	PAKISTAN	1	0,13	10,0	***	3285,0	***	2465,0	***		
41	RUSSIA	2	0,26	9,4	***	3145,0	***	2360,0	***		
42	SWEDEN	3	0,39	4,1	***	1486,0	***	1115,1	***		
43	SERBIA	5	0,65	4,0	***	1324,0	***	993,5	***		
44	PALESTINA	1	0,13	2,5	***	796,0	***	597,3	***		
45	SLOVENIA	1	0,13	1,6	***	663,0	***	497,5	***		
46	BULGARIA	8	1,04	1,1	***	350,0	***	262,6	***		
47	SEYCHELLES	2	0,26	0,5	***	150,0	***	112,6	***		
48	AUSTRALIA	1	0,13	0,3	***	84,0	***	63,0	***		
49	LATVIA	1	0,13	0,2	***	66,0	***	49,5	***		
50	LIECHTENSTEIN	1	0,13	0,2	***	66,0	***	49,5	***		

\*) on countries selected upon the amount of the foreign direct investment, in equivalent of currency, ranking by

Table no. 20

**Classification of the top 40 companies by foreign direct investment  
in the total subscribed capital, in equivalent of currency,  
during April 2010**

No. crt.	Companies	County	Country of origin of the majority investor	Amount of subscribed capital		
				Total in local currency	Total in equivalent of currency	Total in equivalent of currency
				thousand RON	thousand USD	thousand EURO
0	1	2	3	4	5	6
1	STARBEV BUCHAREST SA	ILFOV	OLANDA	348905,1	118954,4	87322,4
2	VOLKSBANK ROMANIA SA	BUCURESTI	AUSTRIA	163200,0	53390,9	39193,4
3	GREEN RESIDENCE SRL	BUCURESTI	CIPRU	99004,8	33331,6	24468,2
4	BCR ASIGURARI VIENNA INSURANCE GROUP SA	BUCURESTI	AUSTRIA	53075,3	17245,1	12659,4
5	LUFKIN INDUSTRIES SRL	PRAHOVA	S.U.A.	48907,2	15855,8	11639,5
6	VODYLAS SRL	BUCURESTI	LIBAN	47977,9	15492,2	11372,6
7	ARCELORMITTAL GALATI SA	GALATI	ELVETIA	43938,0	14462,3	10616,6
8	SAYFONE 2009 SA	IASI	OLANDA	40000,0	13166,1	9665,0
9	CASCADE EMPIRE SRL	ALBA	AUSTRIA	38835,1	12726,8	9342,6
10	ING BUSINESS PROCESSING CENTRE CLUJ-NAPOCA SA	CLUJ	OLANDA	34807,5	11393,6	8363,9
11	INGLEBY ROMANIA SRL	TIMIS	DANEMARCA	30461,3	10075,5	7396,3
12	TORNADO SISTEMS SRL	CONSTANTA	CIPRU	28293,1	9253,4	6792,7
13	GARALV IMOBILIARE SRL	BUCURESTI	SPANIA	26921,2	8883,1	6521,0
14	DEGI CONSTRUDAVA SRL	BUCURESTI	GERMANIA	27381,5	8862,2	6505,6
15	SYNGENTA AGRO SRL	BUCURESTI	OLANDA	25000,0	8362,6	6138,8
16	EMPORIKI BANK - ROMANIA SA	BUCURESTI	GRECIA	24999,4	8228,6	6040,5
17	ENERGONUCLEAR SA	BUCURESTI	OLANDA	20604,4	6815,2	5002,9
18	MARFIN BANK (ROMANIA) SA	BUCURESTI	GRECIA	20642,5	6666,8	4894,0
19	GB TRADE SRL	TIMIS	LUXEMBURG	15760,9	5225,2	3835,8
20	SEMELROCK STEIN + DESIGN SRL	GIURGIU	AUSTRIA	14372,6	5007,7	3676,1
21	FATA ASIGURARI SA	BUCURESTI	ITALIA	12617,1	4283,7	3144,6
22	EOS KSI ROMANIA SRL	BUCURESTI	GERMANIA	12600,0	4147,3	3044,5
23	KRONOSPAN ROMANIA SRL	BRASOV	CIPRU	12314,7	4048,0	2971,5
24	SIGNAL IDUNA ASIGURARI DE VIATA SA	BUCURESTI	GERMANIA	8234,6	2709,7	1989,2
25	ABA TURISM SRL	BIHOR	LUXEMBURG	8247,7	2663,9	1955,5
26	AGRAFOOD SRL	BUCURESTI	OLANDA	8166,0	2661,0	1953,4
27	KRONOSPAN ZONA LIBERA CONSTANTA SRL	CONSTANTA	CIPRU	8132,1	2660,4	1953,0
28	SHINHEUNG ELECTRONICS SRL	BIHOR	COREEA SUD	7977,1	2625,7	1927,5
29	MIKKA NOVARIS SRL	TIMIS	AUSTRIA	8005,7	2619,1	1922,6
30	ADVANCED COMFORT SYSTEMS ROMANIA SRL	BUZAU	FRANTA	6400,0	2146,4	1575,7
31	BLACK SEA BLUE DANUBE ROM SRL	CONSTANTA	TURCIA	6366,8	2084,1	1529,9
32	TRIADMIN SA	BRAILA	CIPRU	6263,8	2047,1	1502,8
33	GALASSINI ROMANIA SRL	BIHOR	ITALIA	5824,7	1983,8	1456,3
34	ALAS ROMANIA SRL	ILFOV	AUSTRIA	5956,7	1956,9	1436,5
35	CARPATHIAN SPRINGS SA	SUCEAVA	ELVETIA	5583,9	1838,0	1349,2
36	EGGER TECHNOLOGIA SRL	SUCEAVA	AUSTRIA	4898,9	1620,5	1189,6
37	COSERCON SRL	BUCURESTI	CIPRU	4843,8	1583,0	1162,1
38	FAIST METALWORKING SRL	BIHOR	ITALIA	4228,2	1423,5	1045,0
39	PTC EASTERN EUROPE SRL	BUCURESTI	OLANDA	4230,9	1389,3	1019,9
40	SIDMA ROMANIA SRL	ILFOV	CIPRU	4206,2	1381,2	1013,9

Table no. 21

**Number of registered companies with foreign investment capital  
and amount of subscribed capital,  
between 1991 and 2009**

balance account at 30 Sept 2004	Number of companies		Amount of subscribed capital					
			Total on ROL		Total on currency		Total on currency	
	No.	%	thousand RON	%	thousands USD	%	thousands EURO	%
0	1		2		3		4	
<b>1991 - 2006, out of which:</b>	<b>147663</b>	<b>89,4</b>	<b>48392059,2</b>	<b>84,0</b>	<b>23173116,8</b>	<b>12,6</b>	<b>17739208,0</b>	<b>86,5</b>
<b>1991</b>	5499	3,7	258165,5	0,5	1058260,8	4,6	817975,6	4,6
<b>1992</b>	11765	8,0	65153,0	0,1	573271,2	2,5	443106,2	2,5
<b>1993</b>	10583	7,2	92793,2	0,2	417844,8	1,8	322970,3	1,8
<b>1994</b>	11053	7,5	230535,9	0,5	881673,3	3,8	681483,5	3,8
<b>1995</b>	3400	2,3	67893,9	0,1	237717,0	1,0	183741,8	1,0
<b>1996</b>	3630	2,5	229256,3	0,5	573594,2	2,5	443355,8	2,5
<b>1997</b>	5251	3,6	232229,8	0,5	359912,8	1,6	278192,2	1,6
<b>1998</b>	8801	6,0	728612,4	1,5	755475,3	3,3	583939,6	3,3
<b>1999</b>	7383	5,0	1214843,7	2,5	944365,3	4,1	729940,9	4,1
<b>2000</b>	8567	5,8	1870247,9	3,9	839143,8	3,6	648610,6	3,7
<b>2001</b>	7175	4,9	4820820,8	10,0	1540810,8	6,6	1190959,4	6,7
<b>2002</b>	7518	5,1	3541822,9	7,3	1078746,2	4,7	833809,6	4,7
<b>2003</b>	6609	4,5	4441402,8	9,2	1288885,0	5,6	996235,1	5,6
<b>2004</b>	10167	6,9	9040577,5	18,7	3032218,4	13,1	2343732,9	13,2
<b>2005</b>	11719	7,9	7173157,1	14,8	3149681,6	13,6	2434525,4	13,7
<b>2006</b>	12823	8,7	6646972,2	13,7	3127314,6	13,5	2417237,0	13,6
<b>2007</b>	15720	10,6	7737574,2	16,0	3314201,6	14,3	2389392,2	13,5
<b>2008</b>	12264	8,3	15034925,8	31,1	5924852,8	25,6	3984432,8	22,5
<b>2009</b>	6801	4,6	15303310,6	31,6	4817293,2	20,8	3512610,5	19,8

Diagram no. 9

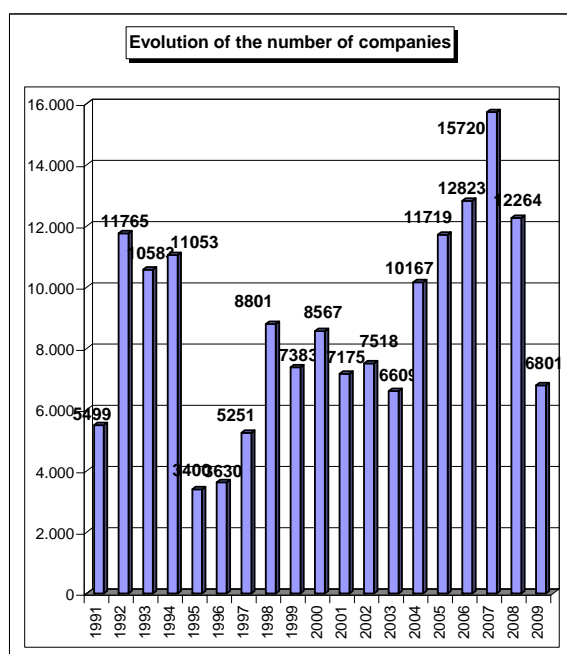


Diagram no. 10

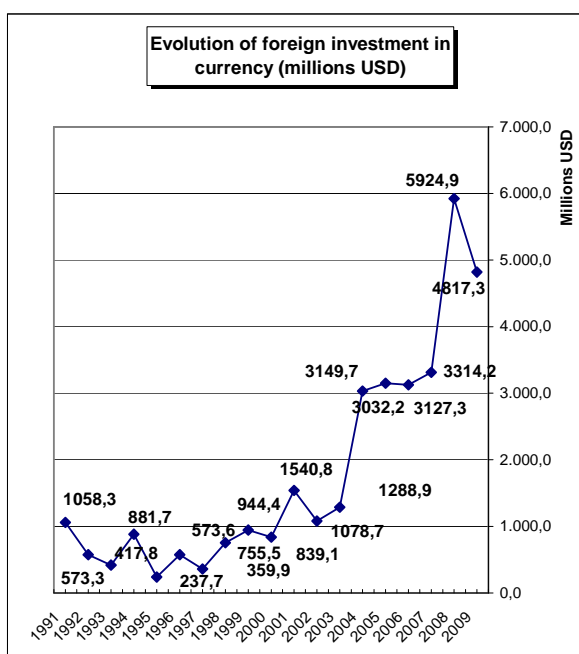


Table no. 22

**Number of registered companies, with foreign capital investment  
and the value of the invested capital,  
- balance account at 31 December 2009**

balance account at 31 December	Number of companies		Amount of subscribed capital						Order by:	
			Total on ROL		Total on currency		Total on currency			
	No.	%	thousand RON	%	thousands USD	%	thousands EUR	%		
0	1		2		3		4		5	
<b>Total ROMANIA</b>	<b>166728</b>	<b>100,0</b>	<b>78730295,5</b>	<b>100,0</b>	<b>33915262,8</b>	<b>100,0</b>	<b>25236251,3</b>	<b>100,0</b>	*	**
ALBA	1558	0,9	402172,7	0,5	194084,5	0,6	138943,2	0,6	19	26
ARAD	4920	3,0	2134160,9	2,7	786470,8	2,3	563026,8	2,2	7	14
ARAD	1774	1,1	3539962,2	4,5	918267,7	2,7	657379,0	2,6	17	3
ARAD	1433	0,9	2357794,7	3,0	792116,1	2,3	567068,3	2,2	23	6
ARAD	5927	3,6	1209241,6	1,5	468966,0	1,4	335728,2	1,3	4	12
BISTRITA-NASAUD	1081	0,6	481147,9	0,6	360699,4	1,1	258221,3	1,0	25	37
BOTOSANI	479	0,3	83730,7	0,1	33735,8	0,1	24151,1	0,1	36	42
BRASOV	5036	3,0	2647914,5	3,4	941521,7	2,8	674026,3	2,7	6	10
BRAILA	813	0,5	382724,2	0,5	149015,4	0,4	106678,7	0,4	29	31
BUZAU	964	0,6	546619,0	0,7	153202,9	0,5	109676,5	0,4		29
CARAS-SEVERIN	1330	0,8	452196,7	0,6	171415,0	0,5	122714,4	0,5	21	21
CALARASI	459	0,3	868820,0	1,1	398147,8	1,2	285030,1	1,1	38	15
CLUJ	6569	3,9	2411849,7	3,1	1012311,0	3,0	724703,7	2,9	3	9
CONSTANTA	5536	3,3	2260834,1	2,9	851879,6	2,5	609852,4	2,4	5	8
COVASNA	1003	0,6	173668,2	0,2	86332,0	0,3	61804,2	0,2	27	32
DAMBOVITA	1040	0,6	709389,3	0,9	263876,3	0,8	188906,5	0,7	26	18
DOLJ	1977	1,2	2025263,3	2,6	620422,8	1,8	444154,7	1,8	16	17
GALATI	1330	0,8	2488811,9	3,2	804568,9	2,4	575983,1	2,3	22	7
GIURGIU	611	0,4	287534,7	0,4	139229,2	0,4	99672,9	0,4	34	38
GORJ	443	0,3	94727,0	0,1	110126,2	0,3	78838,3	0,3	41	41
HARGHITA	2587	1,6	233069,7	0,3	132084,7	0,4	94558,1	0,4	12	28
HUNEDOARA	1749	1,0	504846,2	0,6	210464,7	0,6	150669,7	0,6	18	22
IALOMITA	463	0,3	233519,3	0,3	92237,6	0,3	66032,0	0,3	37	40
IASI	2413	1,4	521667,3	0,7	314957,3	0,9	225474,9	0,9	13	20
MARAMURES	2189	1,3	329011,4	0,4	91627,6	0,3	65595,3	0,3	14	27
MEHEDINTI	724	0,4	184270,2	0,2	76040,5	0,2	54436,7	0,2	30	33
MURES	3398	2,0	2607980,1	3,3	1061498,0	3,1	759916,2	3,0	10	4
NEAMT	1235	0,7	331103,9	0,4	121795,1	0,4	87191,9	0,3	24	24
OLT	575	0,3	1117641,6	1,4	422981,6	1,2	302808,5	1,2	35	19
PRAHOVA	2972	1,8	1978615,7	2,5	577320,5	1,7	413298,2	1,6	11	11
SALAJ	704	0,4	448172,9	0,6	173764,3	0,5	124396,2	0,5	31	23
SATU MARE	2147	1,3	308376,9	0,4	136955,9	0,4	98045,4	0,4	15	25
SIBIU	3459	2,1	796326,5	1,0	349402,1	1,0	250133,6	1,0	9	16
SUCEAVA	1393	0,8	1030341,9	1,3	419928,6	1,2	300622,8	1,2	20	13
TELEORMAN	394	0,2	211758,6	0,3	65803,5	0,2	47108,1	0,2	40	36
TIMIS	10666	6,4	3226444,9	4,1	1329888,7	3,9	952054,5	3,8	2	5
TULCEA	404	0,2	151890,3	0,2	57226,1	0,2	40967,6	0,2	39	34
VASLUI	328	0,2	126258,7	0,2	48484,5	0,1	34709,6	0,1	42	39
VALCEA	722	0,4	188624,9	0,2	72991,6	0,2	52254,0	0,2	32	30
VRANCEA	606	0,4	168132,3	0,2	76601,9	0,2	54838,6	0,2	33	35
MUN. BUCURESTI	78234	46,9	32409815,0	41,2	15013910,0	44,3	10748313,2	42,6	1	1
ILFOV	5083	3,0	6063864,0	7,7	3812908,6	11,2	2729624,5	10,8	8	2

\*) number of companies

Table no. 23

**Number of registered companies, with foreign capital investment  
and the value of the invested capital, on economic development areas,  
- balance account at 31 December 2009**

Economic development areas	Number of companies		Amount of subscribed capital						Order by:	
			Total on ROL		Total on currency		Total on currency			
	No.	%	thousand RON	%	hundreds US\$	%	hundreds EURC	%		
<b>Total ROMANIA</b>	<b>166728</b>		<b>78730295,5</b>		<b>33915262,8</b>		<b>25236251,2</b>		*	**
NORTH-EAST	7281	4,4	4460881,2	5,7	1743919,6	5,1	1248455,2	4,9	7	7
SOUTH-EAST	9653	5,8	5999011,8	7,6	2092494,9	5,1	1497996,9	5,9	5	3
SOUTH-MUNTENIA	7713	4,6	7829599,8	9,9	2454882,7	6,2	1757426,8	7,0	6	2
SOUTH-WEST OLTEN	4441	2,7	3610526,9	4,6	1302562,8	7,2	932492,1	3,7	8	8
WEST	18665	11,2	6317648,7	8,0	2498239,2	3,8	1788465,3	7,1	2	4
NORTH-WEST	18617	11,2	5187800,4	6,6	2244324,2	7,4	1606690,1	6,4	3	5
CENTER	17041	10,2	6861131,7	8,7	2764922,9	6,6	1979381,6	7,8	4	6
BUCHAREST-ILFOV	83317	50,0	38463695,0	48,9	18813916,5	8,2	14425343,2	57,2	1	1

Table no. 24

**Number of registered companies, with foreign capital investment  
and the value of the invested capital, on continents  
- balance account at 31 December 2009**

Continent	Number of companies		Amount of subscribed capital						Order by:	
			Total on ROL		Total on currency		Total on currency			
	No.	%	thousand RON	%	hundreds US\$	%	hundreds EURC	%		
<b>Total ROMANIA</b>	<b>166728</b>	<b>100,0</b>	<b>78730295,5</b>	<b>100,0</b>	<b>33915262,8</b>	<b>100,0</b>	<b>25236250,6</b>		*	**
EUROPE	116135	69,7	69830468,6	88,7	29681005,9	87,5	22204987,0	88,0	1	1
AFRICA	2520	1,5	102126,3	0,1	51966,6	0,2	37202,4	0,1	4	6
NORTH AMERICA	6015	3,6	2612271,2	3,3	1521712,7	4,5	1089379,4	4,3	3	3
SOUTH AMERICA	2489	1,5	774888,7	1,0	269532,8	0,8	192955,9	0,8	5	5
ASIA	38777	23,3	2866438,7	3,6	1580080,8	4,7	1131164,6	4,5	2	2
OCEANIA	792	0,5	2544101,9	3,2	810964,1	2,4	580561,3	2,3	6	4

Table no. 25

**Number of registered companies, with foreign capital investment  
and the value of the invested capital, on economic groups,  
- balance account at 31 December 2009**

Economic groups	Number of companies		Amount of subscribed capital						Order by:	
			Total on ROL		Total on currency		Total on currency			
	No.	%	thousand RON	%	hundreds US\$	%	hundreds EURC	%		
<b>Total ROMANIA</b>	<b>166728</b>		<b>78730295,5</b>		<b>33915262,8</b>		<b>25236250,6</b>		*	**
U.E.	97600	58,5	74898194,9	95,1	31091597,5	91,7	22258174,5	88,2	2	2
A.E.L.S.	2587	1,6	2806928,5	3,6	1244015,5	3,7	890578,7	3,5	4	3
O.E.C.D.	112473	67,5	67981989,8	86,3	29073292,3	85,7	20813289,2	82,5	1	1
C.E.F.T.A.	3973	2,4	123103,1	0,2	50502,5	0,1	36154,2	0,1	3	4

Note: Each economic group's weight is calculated in total Romania.

The weights sum is different from 100% because each country may be part of one or many economic groups

Table no. 26

**Top 50 countries classification on foreign  
investment capital registered  
- balance account at 31 December 2009**

No. crt.	Countries	Number of companies		Amount of subscribed capital					
				Total on RON		Total on currency		Total on currency	
		No.	%	thousand RON	%	thousands USD	%	thousands EURO	%
0	1	2		3		4		5	
	<b>Total ROMANIA, out of which:</b>	<b>166728</b>	<b>100,00</b>	<b>78730295,5</b>	<b>100,00</b>	<b>33915262,8</b>	<b>100,00</b>	<b>25236251,3</b>	<b>100,00</b>
1	HOLLANDE	3649	2,19	15891237,5	20,18	7016322,5	20,69	5022917,5	19,90
2	AUTRICHE	5672	3,40	11935956,1	15,16	5245878,6	15,47	3755473,9	14,88
3	ALLEMAGNE	17421	10,45	11100292,7	14,10	4335472,4	12,78	3103722,8	12,30
4	FRANCE	6191	3,71	8178531,9	10,39	3103262,8	9,15	2221595,9	8,80
5	GREECE	4761	2,86	5860558,4	7,44	2140077,5	6,31	1532060,8	6,07
6	CHYPRE	4495	2,70	4453358,3	5,66	2070297,2	6,10	1482105,8	5,87
7	ITALIE	28574	17,14	4158310,9	5,28	1941470,5	5,72	1389880,0	5,51
8	ETATS-UNIS	6015	3,61	2612271,2	3,32	1521712,7	4,49	1089379,4	4,32
9	SUISSE	2069	1,24	2364416,6	3,00	1026292,4	3,03	734712,8	2,91
10	ESPAGNE	3756	2,25	2415393,9	3,07	987283,9	2,91	706787,0	2,80
11	GRANDE-BRETAGNE	4122	2,47	2107376,5	2,68	866603,4	2,56	620393,0	2,46
12	TURQUIE	11487	6,89	1310251,1	1,66	772246,4	2,28	552843,7	2,19
13	LUXEMBOURG	644	0,39	2062832,8	2,62	746704,3	2,20	534558,4	2,12
14	HONGRIE	10142	6,08	1654440,8	2,10	742292,1	2,19	531399,8	2,11
15	ANTILLES NEERLANDAISES	15		2278952,1	2,89	715543,0	2,11	512250,3	2,03
16	CHINE	9756	5,85	1071262,1	1,36	701235,0	2,07	502007,4	1,99
17	REPUBLIQUE TCHEQUE	476	0,29	1332544,2	1,69	477992,2	1,41	342190,0	1,36
18	BELGIQUE	2346	1,41	820193,3	1,04	422600,8	1,25	302535,9	1,20
19	SUEDE	1154	0,69	758580,8	0,96	270691,2	0,80	193785,2	0,77
20	ISRAEL	5960	3,57	422043,0	0,54	220679,5	0,65	157982,3	0,63
21	JAPON	227	0,14	499328,1	0,63	171547,4	0,51	122809,1	0,49
22	DANEMARK	628	0,38	475890,4	0,60	165909,5	0,49	118773,0	0,47
23	FINLANDE	120	0,07	408034,3	0,52	153517,7	0,45	109901,8	0,44
24	PORTUGAL	370	0,22	490262,7	0,62	148847,6	0,44	106558,5	0,42
25	LIBAN	3537	2,12	270880,4	0,34	124266,3	0,37	88961,0	0,35
26	POLOGNE	532	0,32	457435,3	0,58	114256,7	0,34	81795,3	0,32
27	CANADA	1520	0,91	215702,5	0,27	108627,3	0,32	77765,2	0,31
28	LIECHTENSTEIN	193	0,12	144053,6	0,18	98724,1	0,29	70675,7	0,28
29	NORVEGE	282	0,17	264656,6	0,34	96376,0	0,28	68994,6	0,27
30	OCEANIE BRITANNIQUE	304	0,18	421445,2	0,54	96059,4	0,28	68768,0	0,27
31	GIBRALTAR	59	0,04	241800,6	0,31	86904,6	0,26	62214,1	0,25
32	SANS CITOYENNETE	24	0,01	909,6		75429,6	0,22	53999,3	0,21
33	COREE DU SUD	156	0,09	32030,5	0,04	71192,8	0,21	50966,2	0,20
34	REPUBLIQUE ARABE DE SYRIE	5407	3,24	93599,0	0,12	67161,3	0,20	48080,1	0,19
35	IRAK	5584	3,35	93751,3	0,12	53725,1	0,16	38461,2	0,15
36	SLOVENIE	151	0,09	131629,5	0,17	48861,4	0,14	34979,4	0,14
37	ILES MARSHALL	17	0,01	154395,9	0,20	48313,6	0,14	34587,2	0,14
38	SINGAPOUR	51	0,03	141985,0	0,18	46965,3	0,14	33622,0	0,13
39	REPUBLIQUE DE MOLDAVIE	3523	2,11	98484,2	0,13	41554,4	0,12	29748,4	0,12
40	IRLANDE	716	0,43	52018,9	0,07	36276,1	0,11	25969,7	0,10
41	JORDANIE	3120	1,87	51331,2	0,07	33655,9	0,10	24093,9	0,10
42	BULGARIE	1148	0,69	68178,6	0,09	26958,7	0,08	19299,4	0,08
43	PANAMA	168	0,10	39399,5	0,05	26052,7	0,08	18650,9	0,07
44	IRAN	2575	1,54	37188,3	0,05	24072,7	0,07	17233,4	0,07
45	AUSTRALIE	647	0,39	52425,5	0,07	22723,4	0,07	16267,4	0,06
46	ISLANDE	43	0,03	33801,7	0,04	22623,0	0,07	16195,6	0,06
47	EGYPTE	1357	0,81	54251,3	0,07	21692,9	0,06	15529,7	0,06
48	BELIZE	31	0,02	54871,5	0,07	18804,1	0,06	13461,6	0,05
49	MALTE	79	0,05	43375,3	0,06	15343,0	0,05	10983,9	0,04
50	ARABIE SAOUDITE	130	0,08	36862,7	0,05	13658,5	0,04	9778,0	0,04

\*\*\* Less than 0.01%